

ISSN 1044 – 2014

FRIENDS  
of



GENEALOGY

***THE JOURNAL***

***VOLUME XIII***

***FIRST QUARTER, 2001***

***NUMBER 1***

## ***FRIENDS OF GENEALOGY, INC.***

The purpose of *Friends of Genealogy, Inc.* is to foster an interest in and to promote and encourage the development of genealogy. Our objectives are:

1. To share and assist any individual or organization with a common interest in genealogy and history
2. To promote and encourage the preservation of genealogical and historical materials
3. To teach the principles of correct documentation

Membership is open to all individuals and organizations interested in accepting our purpose and objectives. Annual membership dues are:

Individual	\$15.00	Family	\$20.00	Sustaining	\$25.00
Life Memberships:		Individual	\$125.00	Family	\$175.00

Our monthly meetings are normally held the first Saturday of each month at 1:00 p.m. in the Meeting Room at Shreve Memorial Library, Broadmoor Branch, 1212 Captain Shreve Drive, Shreveport, Louisiana. Program topics and other meeting information are published in local newspapers. Following many of our meetings, we have informal round-table discussions for the purpose of assisting individuals with their research.

Our quarterly publication, *The Journal*, welcomes unpublished material pertaining to genealogy and history, particularly in North Louisiana. Other information includes pedigree charts, family group sheets, and reviews of books, publications, and other genealogical material donated to our organization. Queries are free of charge; they will be edited and published as space is available. Friends of Genealogy, Inc. is not responsible for the accuracy of contributed material.

We welcome exchanges of quarterlies and other publications. We also accept donations of books, publications, and other genealogical materials for review in *The Journal*. All materials are deposited in the Genealogy Collection of the Shreve Memorial Library in Shreveport, Louisiana.

Friends of Genealogy, Inc. (TIN: 72-1169259) is a tax-exempt not-for-profit organization under the provisions of IRC Section 501(c)(3).

*THE ONLY ROSE WITHOUT A THORN IS FRIENDSHIP.*

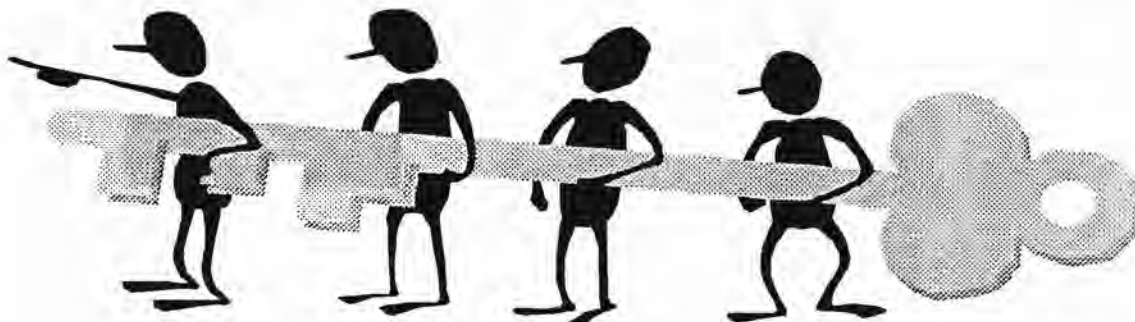
# ***THE JOURNAL***

***FRIENDS OF GENEALOGY, INC.***

***Post Office Box 17835  
Shreveport, LA 71138-0835***

***Volume XIII, No. 1  
First Quarter, 2001***

The President's Page	2
Mark Your Calendar	3
Research Forms Available in the Genealogy Department	4
Where in the World Did I Put That?	5
Ask Miss Ima G* Bugg	6
Star Cemetery	8
A Survey of the 1850 Census of Shreveport, LA	10
Letter from Faedra M. Wills, Genealogy Librarian	17
Webster Parish, LA Tax Assessment Roll, 1889	18
New Orleans GenWeb Needs Helpers	21
Osborne Funeral Home Index	22
Providence Baptist Cemetery	26
Members of the Gen. Leroy Stafford Camp No. 3, Confederate Veterans	30
The Sacred Harp	36
Queries and New Members	37
From Our Exchange Quarterlies	38
Book Reviews	42
Surname Index	45



***Together, we can unlock the secrets of the past.***

***THE JOURNAL*** is indexed in the Periodical Source Index (PERSI)  
published by the Allen County Library Foundation

## *The President's Page*

Dear Friends,

We begin this New Year with great aspirations of what we would like to accomplish this year in our genealogy research. It is my hope that each of you has the greatest of success. In the last issue of *The Journal*, it was announced that Ms. Desmond Walls Allen would be our speaker this year at our annual workshop. It's my job to announce that Ms. Allen will not be able to come and be with us. She is having some small problems with her health and doesn't feel that she needs to obligate herself and then not be able to complete it at the last moment.

We have, though, found another remarkable speaker, Mr. Lloyd DeWitt Bockstruck. He is the Supervisor of the Genealogical Department of the Dallas Public Library. He is a member of numerous genealogical and lineage societies and has held offices in many of them. He recently received the Award of Merit from the National Genealogical Society and a Fellow of the National Genealogical Society. His specialties are early colony records created at all levels and military records, both state and federal holdings. He is the author of *Revolutionary War Bounty Land Grants Awarded by State Governments* and Virginia's *Colonial Soldiers*.

We are planning a reception with finger foods on Friday evening, April 6, 2001 between 5:30 PM and 6:45 PM. Then Mr. Bockstruck will speak from 7:00 PM to 8:00 PM on The Genealogical Collection of the Dallas Public Library. This is a great topic and anyone with thoughts of going to the Dallas Library should attend. There have been many significant additions during the past few years, the library and the books have been rearranged, and more improvements are planned.

There is a flyer in this *Journal*, with complete information about the Seminar and Book Fair. It is our hope that everyone will support this renowned speaker and our organization. I know that everyone will enjoy the Seminar and leave with a rejuvenated desire to solve that problem ancestor.

Thanks for being a Friend of Genealogy,

*John C. Head*



Let us now sing the praises of famous men, our ancestors in their generations. The Lord apportioned to them great glory, his majesty from the beginning.

*Ecclesiasticus 44:1-2*

## ***MARK YOUR CALENDAR***

Meeting dates scheduled for 2001 by **Friends of Genealogy, Inc.:**

January 6, 2001	February 3, 2001	March 3, 2001
April 7, 2001	May 5, 2001	June 2, 2001
July 7, 2001	August 4, 2001	September 1, 2001
October 6, 2001	November 3, 2001	December 1, 2001

Unless otherwise noted all meetings are held at 1:00 p.m. in the Meeting Room, Shreve Memorial Library, Broadmoor Branch, 1212 Captain Shreve Drive, Shreveport, LA 71105 on the first Saturday of each month. However, times, locations and topics are subject to change as noted below. Check local newspapers prior to each meeting, or call John Head 318-929-1730 for up-to-date program information. (E-Mail:jw-enterprises@worldnet.att.net)

**Saturday, March 3, 2001 Meeting** will be held in the auditorium of the **Louisiana State Exhibit Building**, 3015 Greenwood Road, parking accessed from the Fair Grounds. No charge for parking or entrance. The speaker will be Mary R. Zimmerman, M.A., whose topic will be "Migration Roots to North Louisiana, 1800 to 1860. Please contact Laura Duffy 318-424-7648 (E-Mail:lhduffy@msn.com) or John Head 318-929-1730 for directions.

**Monthly Board meetings** are generally held the Monday evening prior to the regular Saturday meeting. Our Board meetings are open and all members are encouraged to attend at least one meeting during the year. Remember, this is your organization, please present your thoughts and ideas. Contact any Board Member for the time and location of any meeting you wish to attend.

The **Dallas Genealogical Society** is sponsoring a Seminar March 10, 2001 featuring William Dollarhide speaking on "Organizing Your Research," "The Scotch-Irish in America," and "Migration to Texas."

John A. Sellers is scheduled to be the speaker for **The Cass County Genealogical Society's** annual seminar to be held Saturday, March 17, 2001 at the Home Enterprises Building, Highways 43 & 77 in Atlanta, Texas, 9:00 AM to 3:30 PM. Contact Charles Steger at 813 Caver Street, Atlanta, TX 75551-2747 (903-796-4456) for information.

**Friends of Genealogy, Inc.** will host a Seminar and Book Fair on April 6 and 7, 2001 featuring **Lloyd Dewitt Bockstruck**, supervisor of the genealogy section of the Dallas Public Library, Dallas, Texas. The Seminar will be held at St. Mary of the Pines Catholic Church, 1050 Bert Kouns Industrial Drive, Shreveport, LA 71118. The Friday evening reception will begin at 5:30 PM and Mr. Brockstruck's lecture on Genealogical Collections at the Dallas Public Library will begin at 7:00 PM. The Seminar and Book Fair will continue on Saturday, April 7 at 8:00 AM, with coffee, donuts and book

vendors. The Saturday morning sessions will be on migration from Virginia and North Carolina to Tennessee, South Carolina and Georgia. A light lunch will be served and is included in the cost. The afternoon sessions will be Names, Names, Names, “a name is an uncertain thing, you can’t count on it” and Identifying the Maiden Names of Females. Advance registration (before March 24, 2001) is \$25 for both Friday and Saturday. At the door the cost is \$10 for Friday evening, \$20 for Saturday. Advance registration is necessary if you wish the surnames you are researching to be included in the syllabus. Please use the flyer enclosed in this issue of The Journal to register you and your friends for this Seminar April 6 and 7.

The **Texas Scottish Festival and Highland Games** will sponsor a Scottish Family History Symposium featuring Lloyd Bockstruck and Grady McWhiney speaking on “The Celtic South” June 1, 2001 at LaQuinta Conference Center, Arlington, Texas. Registration fee is \$40. Contact Ray McDonald 817-654-2293.



### **Research Forms Available in the Genealogy Department Shreve Memorial Library, Broadmoor Branch**

All forms are found in racks attached to a center post near the counter in the Genealogy Department.

- Census Extraction Forms - price 10 cents each. These forms are designed to contain the information provided in the census enumerations from 1790 to 1920. They are 3-hole punched.
- Application for Search of Census Records – no charge for the form. Form BC-600 requests personnel at the Bureau of the Census to search unreleased censuses for information on yourself or a family member. The charge for this search is \$40-\$50+ depending on copies requested and the scope of the information requested. Since these censuses are not indexed, you must have an address for the person you are requesting a search for.
- National Archives Order for Copies of Veterans Records – NATF Form 80 is designed to request National Archives personnel to search pre-World War I Pension Application Files, Bounty-Land Warrant Application Files, and Military Service Records. There is a \$10 fee for every file located. If they are successful, they will bill you. Only one record may be requested per form. Both Confederate and Union Civil War files may be ordered through this form.
- National Archives Order for Copies of Land Entry Files – NATF Form 84 is designed to request National Archives personnel to search for the first transfer of public domain land to an individual. Subsequent transfers are found in county records. Not all states had public domain land. The original thirteen states, Vermont, Kentucky, Tennessee, Maine, West Virginia, Texas and Hawaii were never part of the Federal public domain. Only one file may be requested per form. As with NATF 80, you should send no payment until billed.

## Where in the World Did I Put That?

### Editor's Tip

You will not be into genealogical research long, before this question will arise. With any luck at all, your research will soon outgrow your spiral notebook or your three ring binder. If you have purchased a software program for your computer and maintain your documented findings thereon, good for you! But research data you accumulate to get those facts entered into your software program will grow and grow and multiply if not watched night and day.

What to do with it all? That's why files were invented – and they have not been made obsolete by computers yet. Here are a few methods I use to maintain my mess:

1. File folders – plain manila, letter size and/or legal size.
  - Start by labeling them with your family surnames. As information grows, you may want to have a folder for each generation of a given surname.
  - File records copied in the same manner they are found – by state – by county – by city – by category [church, land, probate].
  - Correspondence – I find some people I correspond with frequently enough I need a folder for them specifically, others I file in a family surname correspondence folder. And do keep a copy of each letter you write, noting the data enclosed.
2. Three-ring binders and a three-hole punch.
  - Three-ring binders are great for assimilating current research. Just grab the binder and away you go and you probably have everything you need to reference at the library or the archives.
  - Census records. I take tons of census records. They put people in a given county at a given time and show who was living next door. I use the record sheets sold by the library for 10 cents each. There is no better bargain, they are already three-hole punched, and they slip right into a three-ring binder. I keep a huge binder of census records, tabbed by years, on each family surname I have.
3. File cabinets or boxes.
  - Since I have been at genealogical research for 25+ years, I have purchased two-drawer file cabinets, 7 of them. But you may not need quite so many yet. The Banker's Box, sold at your local discount store, will serve nicely to contain file folders. They may be placed in it letter-size front to back or legal size side to side and there are handle cut-outs for easy carrying.
  - I keep my current research interest files in a Banker's Box in the trunk of my car. This relieves the frustration of trying to remember what is in that file back at home. I do not need to carry everything into the library every time I go, but it is so good to know it is out there in the trunk of the car if I really need it.
4. The floppy disk.
  - Well, they aren't really floppy anymore, but you know what I mean. With the appearance of computers in our library, data from your computer, stored on a disk, could be accessed while at the library, and there is no greater way to share data with a research buddy.
5. The address file.
  - Be it Rolodex, index cards, or electronic, an address file is a great time saver.
6. The Rabbit's Foot.
  - Luck never hurts.

# ASK

Miss Ima G\* Bugg

---

\* Genealogy



Miss Ima G\* Bugg, our own unique, lighthearted research associates, has agreed to try to answer our questions and give us some research clues. If you are confused and in need of help, drop her a line. If she can't help you, maybe some of our readers can. Send your questions/comments to Miss Ima G\* Bugg, Friends of Genealogy, Inc., P. O. Box 17835, Shreveport, LA 71138-0835.

Dear Miss Ima: Where was that Mason-Dixon Line that everybody wants to live south of and how did it get its name?

Dear Lost: The Mason-Dixon Line, traditional line between The North and The South, was named for two English surveyors, Charles Mason and Jeremiah Dixon. Boundaries sometimes have a rough time getting established and this one was the boundary between Pennsylvania and Maryland. Often the proprietors of colonial land companies never left England so their descriptions of land over here could be vague. Two proprietors, the Penns and the Baltimores had a problem with just where things stopped and started west of the Delaware River. So these surveyors came over, went off on a tangent, and surveyed this line, placing milestones every mile. The line was 233 miles long, was finished in 1768, and the cost of the work was \$75,000. If you live in Maryland, Virginia, Kentucky, or any point south of these states, you live south of the Mason-Dixon Line.

Dear Miss Ima: My ancestor's listing in Goodspeed's *Biographical Memoirs* contains a number of facts that puzzle me. It states his mother died early, his sister raised him and it makes no mention at all of his father's second marriage that I have a great many records on and six more children. This book was written almost 100 years ago, though, so it must be correct. Have I made an error of assumption about his father's second marriage?

Dear Assuming: If you have made an error, it is in assuming Goodspeed printed Gospel Truth. Goodspeed's Publishing had a great gimmick going: they sent advance men into an area, contacted the local movers and shakers of the community, and offered them the opportunity to pay a fee and have their biographical sketch included in this history of the area. Not only that, but the subject got to write his own biographical sketch, no questions asked. If your ancestor was not particularly fond of his step-mother, what a great chance to just leave . . . her . . . out. Enjoy Goodspeed's sketches for the hints they provide, do not worry yourself about discrepancies with vital records. Stick with the records.

Dear Miss Ima: I just found my grandmother in the 1910 Census and enumerated there is her first son, whom I thought died as an infant, her second daughter, and my father, age 18 months. My eldest aunt is missing—the boy named is just her age—could she have been originally a boy? What am I to do about this?



Dear Agitated: Relax, perhaps the enumerator asked a fuzzy question. Perhaps your grandmother was having “one of those days.” Picture this: the enumerator asks, “How many children do you have?” Grandmother answers, “Three.” Enumerator asks, “Name of your first child?” And Grandmother names her deceased firstborn son. Enumerator asks, “How old is he?” *Grandmother realizes she has made a boo-boo and to save face, gives the enumerator the age of her first daughter. What difference will it make 100 years from now anyway? All they are doing is counting the population, right?* And you’ve never fudged a bit to save face either, have you? Remember that census enumeration, while a valiant effort was made, still contains a bit of human error here and there.

Dear Miss Ima: I see a lot of books on families in the library, but I have not been able to find one on my family. Where could I find a book or any other type of information on my surname?

Dear Bookless: Sounds like you have investigated your local library, so you need to branch out. Check the book *Genealogies in the Library of Congress*, and its supplement volumes. You will find whether the Library of Congress has a book on your surname (and they’ve got just about everything!). Now this is not a lending library, so if opportunities to go to Washington, D.C. are limited for you, the people there will copy the table of contents and/or index of any book you are interested in. Of course there is a nominal charge for the copies. Write Library of Congress, Photoduplication Services, Washington, D.C. 20540.

Other sources to check are the latest edition of *Genealogical & Local History Books in Print* published by the Genealogical Publishing Company. There may be a family newsletter put out on your family—Everton’s *Genealogical Helper* publishes a list of such family newsletters each year in its January-February issue. From *Heritage Quest*, Nov.-Dec. 1996

Dear Miss Ima: I just discovered that my gr-gr-grandfather’s full name was George Washington Jones. I’m just bubbling over--this indicates I am descended from George Washington doesn’t it?

Dear Bubbles: I hate to burst your you-know-what, but the father of our country did not father any descendants. The coincidence of a famous given name in the family tree does not necessarily infer a family connection “way back there.” But the origin of given names in the family tree sometimes sheds light on their religious or political affiliation. Children were often named for a national hero, minister, author or politician. Examples are Andrew Jackson, Thomas Jefferson, Francis Marion, Samuel Johnson, Robert E. Lee, John Wesley and so forth. Dig into the history of the area your family was in and the events occurring when this given name first appeared and you will probably learn some very colorful things about your family.

**STAR CEMETERY**  
**Shreveport, Caddo Parish, Louisiana**  
**by Mrs. Isabelle Woods**

The Star Cemetery is located at the north end of Bell Street. It is bound on the north by Lakeshore Drive, on the east by I-20, on the south by St. Joseph's Catholic Cemetery, and on the west by the Main Post Office in the City of Shreveport, Caddo Parish, Louisiana.

Star Cemetery occupies about ten acres of a 70-acre tract of land that was once the campus of Shreveport University. In 1870 a group of men in Shreveport, LA, affiliated with the Baptist Church purchased 70 acres of land once known as the "Helm school property" for the purpose of establishing a university. In 1871 the Shreveport University opened. However, economic conditions worsened due to the delayed construction of a street-railway to the University, a yellow fever epidemic in 1873, and a money panic in 1874. The University was closed in 1874 and sold its property in 1878.<sup>1</sup>

On March 22, 1883, fourteen of Shreveport's African-American citizens appeared before Mr. Newton C. Blanchard, Notary Public, to form a corporation under the name of Star Cemetery Association. Mr. Samuel "Sam" Chambers, President of the Star Cemetery Association, and thirteen (13) members of his Board of Directors—W. Harper, J. H. Henry, Square Hicks, Peter Johnson, S. A. Johnson, William E. Johnson, W. J. McDonald, A. G. Miller, William Moreham, Allen F. Moss, G. A. Poland, C. T. Thomas, and Zack Wiggins—signed this document either by his signature or by his mark. Mr. A. Currie and Mr. W. Boazman acted as witnesses to this act of incorporation.<sup>2</sup>

On the same date, Mr. Andrew Currie sold a tract of land containing ten acres more or less to this Association for a consideration of three hundred and fifty dollars (\$350.00).<sup>3</sup> This acreage became Star Cemetery. It was also the City of Shreveport's first burial ground for African-Americans.

Many prominent African-American religious and civic leaders are buried in Star Cemetery. Professor Raleigh P. Player (1876-1944) was principal of the former Butler's Hill School located at 1217 Brooks Street in Shreveport. Reverend Luke Allen Jr. (1871-1938), Pastor of Avenue Baptist Church for 34 years, and his wife, Mrs. Cora M. Allen (1876-1935), Supreme Worthy Inspectrix of the Court of Calanthe, are next to his father, Reverend Luke Allen, Sr. who died in 1919. Mr. A. M. Newman (1845-1898) was the Founder of the 13th District Normal and Collegiate Institute. Reverend Thomas Luke (1837-1884) was the Founder and First Pastor of the Galilee Baptist Church. The Reverend S. A. Johnson (1849-1897) was the second Pastor of the Galilee Baptist Church.<sup>4</sup>



Ms. Birdie Lee Bennett

Ms. Birdie Lee Bennett, who died on January 10, 1973, is buried in Star Cemetery. She was rated as one of the best first grade teachers of Caddo Parish. Ms. Bennett was a member of the Antioch Baptist Church, where she was a member of the Choir, and served on the Deaconess Board and Missionary Society. She graduated from the 13th District Academy and received a Bachelor of Arts degree from Bishop College. In 1973, she was survived by a nephew, Mr. Frank Bennett, Jr., of Los Angeles, California.<sup>5</sup>

One of the oldest headstones is that of George Colston who died on April 22, 1883. Ms. Beulah Adger (1907-1989) is one of the most recent burials. Ms. Adger shares a headstone with both Fred Stewman, Sr., and Jr.

By the 1960's the Star Cemetery was obviously neglected. The grass was overgrown and many headstones were barely visible. Dr. Elbert E. Allen (1922-1999), who is buried at the Oakland Cemetery in Shreveport, led a successful effort in 1961 to establish regular maintenance for Star Cemetery. Since then, Star Cemetery has been maintained by the Parks and Recreation Department of the City of Shreveport.<sup>6</sup>

The Star Cemetery is estimated to be the burial site for over 10,000 decedents. Many of these decedents were born as slaves but lived to attain and to enjoy his/her freedom.

The Star Cemetery is currently a State of Louisiana historical landmark. Mr. Harry Thomas, President of the African-American Multi-Cultural Tourism Commission, Shreveport, Louisiana, is the leader of a group striving to establish Star Cemetery on the National Register of Historic Places.<sup>7</sup>

---

<sup>1</sup> Paxton, Rev. W. E. *A History of the Baptists of Louisiana from the Earliest Times to the Present*, pages 484-485, St. Louis: C. R. Barns Publishing Co., 1888.

<sup>2</sup> Microfilm 173-74, Roll 52, Caddo Parish, Shreveport, Louisiana, Conveyance Record, 1882-1883, volume I, page 437, Shreve Memorial Library, Shreveport, Louisiana.

<sup>3</sup> Microfilm 173-74, Roll 52, Caddo Parish, Shreveport, Louisiana, Conveyance Record 1882-1883, volume I, page 440, Shreve Memorial Library, Shreveport, Louisiana.

<sup>4</sup> Burton, Willie. *On the Black Side of Shreveport, A History*, pages 29-30, 71-72, 132; printed in 1983: self-published; also headstone inscriptions at Star Cemetery, Shreveport, Louisiana.

<sup>5</sup> Funeral Program entitled, "Obsequies of Sister Birdie L. Bennett," dated January 13, 1973, Shreveport, Louisiana, in possession of Mrs. Isabelle Woods, Bossier City, Louisiana.

<sup>6</sup> "Star Cemetery Restoration Begun by Shreveport Units," *Shreveport Times*, October 6, 1968, Section C, "Metropolitan News," page 1C, columns 2-6, Shreveport, Louisiana.

<sup>7</sup> Benefield, Kerry. "Recognition, Face Lift Sought for African-American Cemetery," *The Times*, September 5, 2000, Section B, pages 1B and 3B, columns 1-2, Shreveport, Louisiana.

## *A Survey of the 1850 Census of Shreveport, Louisiana*

By Danielle Harrison Neal

The founding of Shreveport dates from January 24, 1836 when Angus McNeil purchased 640 acres from Larkin Edwards, a trader who participated in the purchase of the Caddo Indian lands the previous year. In 1850 Shreveport was 14 years old, a gateway to the new State of Texas, with the Texas Road being Texas Street, Texas Avenue and present day Highway 80 through Greenwood to the state line. Captain Henry Miller Shreve cleared the great log raft from the Red River, opening it to navigation and from early days a ferry was operated on Red River at Shreveport assisting wagon trains on their trek west.

An 1864 map of Shreveport shows approximately 40 square blocks, from Commerce Street (the Levee) on the east to Common Street on the west, from Silver Lake bounded by Lake Street on the south to Caddo Street and Cross Bayou on the north. The 1850 Census lists 256 residential dwellings within Shreveport.

As I researched families in this 1850 Census enumeration, I was struck by the number of foreign born people residing here so early. My questions prompted me to study the entire population as revealed by this census. For this survey I considered adults only and included in this category all persons 18 and older. A few younger persons who gave occupations were also included, my thought being that if they were employed, they were living here by choice. From copies of pages 330 through 343 of the Caddo Parish enumeration, I entered these 1850 residents on a spreadsheet so I could sort them, rearrange them, and study them statistically.

The 1850 Census being the first to provide places of birth, specific ages, and the names of those other than the head of the house, it is the first census that can be used for a study of a population's origin.

The inherent deficiency in this census is the absence of the African American population. Thirteen free colored persons were included in this census: Allain Bonner, 22, a saddler born in Mississippi; John Jones, 40, laborer, and his wife, Angeline Jones, 38, both born in Illinois; Susan Amhurst, 30, a servant born in Louisiana; Eliza Peterson, 31, a washerwoman born in Virginia; Norman Davis, 40, a barber born in Virginia; his wife Catherine Davis, 40, born in Mississippi; their children Dulcina Collins, 19 and Christopher Davis 17, both born in Louisiana; Allan [no surname], 35, a laborer and Mary [no surname] 48, their birthplace unknown; and Rose Florestine, 22, and Mary Florestine, 21, both born in Louisiana.

This survey considers 716 residents. Of these, 160 (22%) were foreign born, and 123 (17%) were from states north of the Mason-Dixon Line. Only 26 (3.6%) were born in Louisiana. Of those foreign born, the greatest number were from Germany, England, Ireland, France, Scotland and Switzerland. Of those who were native born, the greatest number were from Tennessee, Virginia, Georgia, Kentucky, Alabama, South Carolina, North Carolina and Mississippi. The place of birth for eight persons was unknown. Places of origin and numbers are illustrated in the table below.

<b>Place of Origin</b>	<b>No. Born</b>	<b>Place of Origin</b>	<b>No. Born</b>
Alabama	42	Rhode Island	2
Arkansas	7	South Carolina	42
Connecticut	1	Tennessee	77
District of Columbia	1	Vermont	3
Georgia	52	Virginia	57
Illinois	12	Belgium	1
Indiana	6	Canada	1
Kentucky	47	England	32
Louisiana	26	France	19
Massachusetts	5	Germany	49
Maryland	4	Holland	1
Maine	6	Ireland	31
Missouri	11	Italy	2
Mississippi	33	Mexico	2
New Hampshire	3	Poland	1
New Jersey	1	Prussia	2
New York	29	Russia	1
North Carolina	41	Scotland	8
Ohio	16	Switzerland	8
Pennsylvania	24	Wales	2

The 1850 residents of Shreveport declared a variety of occupations. As might be expected, the most common occupation was that of Merchant, 65, and 44 were listed as Clerks. Two were Commission Merchants and 5 were Merchant Tailors. There was one Auction Merchant and one Bookkeeper Clerk. Twenty Lawyers took care of legal matters, 17 Physicians tended the ill, 8 Druggists sold tonics and there was one Apothecary. Five Tailors, one Hatter and 6 Shoemakers dressed the town. Four Saddlers, one Saddler Apprentice, and 6 Blacksmiths supported two Livery Stables. As a forerunner of GM, there were 7 Carriage Makers.

The growing town was being constructed by 6 Brick Makers, 8 Brick Masons, 48 Carpenters, 12 Painters, 2 Cabinet Makers, 4 Shinglemakers, and 66 Laborers. One Cooper made barrels for the 9 Butchers, 6 Bakers, and 1 Candlestick Maker. Three Grocers and one Fisherman supplied further food. Seven Confectioners kept one Dentist in business. The lone Barber probably assisted the Dentist in removing more than hair from a head.

In the craftsmen category there were 2 Silversmiths, 5 Tinnners, one Coppersmith and 2 Gunsmiths. In the mechanic category there were 4 Ginwrights, one Machinist, one Engineer, and one Model Maker.

Education was encouraged by 2 School Masters, 2 School Mistresses, 2 Book Makers and one Printer.

The distaff side, in addition to the 2 School Mistresses, was employed thus: 2 Seamstresses, one Milliner, one woman running a Boarding House, 3 Washerwomen, 4 Domestic Servants, one Cigar Seller, and one Organ Grinder. Think on this tomorrow morning as you prepare to go to work.

There were 3 Hotel Keepers, 2 Bar Keepers, one Steamboat Captain, and 2 Pilots. Tending to agriculture there were 4 Farmers, one Overseer, and 4 Gardeners. And in a category I am at a loss to speculate on were 3 Speculators, 6 Traders, and one Agent.

These 716 residents were served by one Mail Contractor, one Constable, one Minister and one Notary. Could a Notary have made a living at that? Now, lest you think that Shreveport was an uncouth frontier town in 1850, I want you to know that it had at least one Gentleman, Mr. R. V. Marye, age 60, of Virginia.

Many men wore two hats. Lawrence P. Crain was a lawyer and also Trustee of Ward 4. B. L. Hodge was a lawyer and Corporation Attorney. Robert Cooke, lawyer, was also Mayor. Henry Hunsicker, constable, was also the Tax Collector. William G. Kerley, merchant, was also City Clerk. Theodore Ruddle, carpenter, was also a Constable. F. M. Waldron, carpenter, was also Trustee of Ward 5. Charles R. Griswold, commission merchant, was also Trustee of Ward 2. A. L. Heine, auction merchant, was Trustee of Ward 3. John L. Gooch, trader, was also Street Commissioner. John E. Manigan, laborer, was also Sexton.

Bennett's Bluff and Cane's Landing on Red River progressed from trading posts to frontier towns to modern day Shreveport – Bossier City. The choice of location was determined initially by the physical attributes of the river and the land, but the metropolitan area survives because of the industry and initiative of its people. I salute these citizens of 1850 and I believe they would be proud of what their descendants have accomplished.

Sources:

- 1850 Census of Caddo Parish, LA, pages 330-343.
- Gates, Carol, *Shreveport and Caddo Parish Officials, 1836-1986*, Shreve Memorial Library, Shreveport, LA 1985.
- McLure, Lilla and Howe, J. Ed, *History of Shreveport and Shreveport Builders*, 1937, Shreveport, LA.
- O'Pry, Maude Hearn, *History of Shreveport and Caddo Parish*, 1928, Shreveport, LA.

**Adult Citizens of Shreveport in 1850 Census  
by Occupation and Place of Birth**

<u>P. No.</u>	<u>Hse/Fam.</u>	<u>Name</u>	<u>Age</u>	<u>Sex</u>	<u>Occupation</u>	<u>Property</u>	<u>Place of Birth</u>
330	1/1	Lawrence A. Crain	32	M	Lawyer	20,000	VA
		Adelaide Crain	22	F	Wife		SC
		Robert Crain	25	M	Clerk		LA
2/2		C. Mitchell	25	M	Lawyer	2,000	Washington DC
		C. J. Mitchell	21	F	Wife		TN
3/3		Calvin Crain	25	M	Painter		NC
		R. A. VanHorn	20	M	Painter		FL
		Nicholas Kelly	32	M	Painter		Ireland
		Henry Smallwood	14	M	Painter		England
		Albert Robinson	26	M	Painter		SC
4/4		Atheus Slaughter	21	M	Student	1,000	KY
		B. L. Hodge	26	M	Lawyer		TN
5/5		Joseph Howell	60	M	Farmer	2,000	NC
		Nancy Howell	47	F	Wife		NC
		H. S. Howell	25	M	Clerk		NC
		Overton Hitchcock	45	M	Carpenter		GA
6/6		Robert Green	30	M	Merchant	6,000	VA
		W. H. Douglass	22	M	Clerk		TN
7/7		John M. Lewis	35	M	Clerk	3,200	VA
		Emily E. Lewis	27	F	Wife		AL
8/8		Wesley Crumpton	37	M	Merchant		OH
9/9		E. D. Anderson	32	M	Merchant	6,000	TN
		B. G. Connor	30	M	Clerk		SC
10/10		B. M. Johnson	36	M	Merchant	18,000	SC
		Susan M. Johnson	21	F	Wife		VA
11/11		James A. Waller	20	M	Clerk		TN
12/12		John Walters	37	M	Merchant	3,000	VA
13/13		Nathaniel Moore	33	M	Merchant	7,000	AL
		J. L. Gooch	22	M	Clerk		MS
14/14		J. J. Cline	28	M	Merchant	4,000	PA
		Robert Cooke	28	M	Lawyer		3,000
15/15		H. G. J. Beattie	35	M	Notary	5,000	SC
		Anne M. Beattie	26	F	Wife		VA
		C. M. Beattie	55	F			VA
16/16		Thomas T. Land	34	M	Lawyer	7,240	TN
		Mary G. Land	28	F	Wife		MS
17/17		Henry Huniecher	31	M	Constable		France
		Eliza Huniecher	30	F	Wife		VT
18/18		Richard A. Catlifle	38	M	Speculator	40,000	GA
		V. Blackwell	27	M	Physician		AL
		M. J. Blackwell	25	F	Wife		AL
		R. T. King	30	M	Carpenter		AL
		W. Herring	35	M	Carpenter		KY
		R. V. Marye	60	M	Gentleman		VA

<u>P. No.</u>	<u>Hse/Fam</u>	<u>Name</u>	<u>Age</u>	<u>Sex</u>	<u>Occupation</u>	<u>Property</u>	<u>Place of Birth</u>
		M. S. Cutlidge	46	F	Wife (R. A. C.)		GA
		R. T. Buckner	23	M	Lawyer		GA
19/19		William Bolliver	31	m	Druggist		KY
		William H. Daniels	21	M	Druggist		TN
		James W. Ratliffe	21	M	Druggist		PA
		J. H. Alison	26	M	Physician		SC
20/20		W. W. George	43	M	Physician	10,000	GA
		Mary F. George	34	F	Wife		NC
21/21		J. L. McFall	25	M	Merchant		KY
		P. B. McFall	23	M	Merchant		KY
		William L. Sibley	23	M	Clerk		LA
22/22		H. M. Hall	29	M	Merchant		NC
		A. J. Hitchcock	28	M	Speculator		GA
23/23		J. W. Brooks	21	M	Clerk		TN
		G. L. Maury	18	M	Clerk		AL
24/24		P. Tache	40	M	Clerk		Switzerland
		L. Neuberger	24	M	Clerk		Germany
25/25		J. H. Langfield	35	M	Merchant	1,800	Germany
		Henriette Langfield	23	F	Wife		Germany
26/26		A. A. Enos	20	M	Merchant Tailor		New York
		Eldred Wood	20	M	Tailor		England
		Charles E. J. White	19	M	Clerk		AL
331	27/27	Thomas E. Lewis	21	M	Druggist		TN
		Benjamin Logan	22	M	Physician		KY
		B. B. Smith	34	M	Physician	11,000	KY
28/28		John W. Smith	31	M	Druggist		KY
		H. J. E. Smith	22	F	Wife		SC
29/29		W. W. Smith	38	M	Merchant	10,000	KY
		R. D. Sale	26	M	Clerk	1,500	AL
30/30		H. Howerton	80	M	Merchant		VA
		C. C. Ford	21	M	Student		MS
31/31		H. Howerton	27	M	Merchant	2,500	LA
		Eliza Howerton	23	F	Wife		LA
32/32		William G. Kerley	32	M	Merchant		KY
33/33		M. M. Landrum	34	M	Lawyer	3,700	SC
		Sarah P. Landrum	17	F	Wife		LA
		F. E. Sewall	43	F		10,000	ME
34/34		Jonas Robeson	48	M	Merchant		MA
		S.A. Robeson	35	F	Wife		ME
35/35		Adam Leonard	54	M	Hotel Keeper		PA
		Ann Leonard	42	F	Wife		TN
		Leonard McCruider	23	M	Physician		MS
		J. B. Carr	35	M	Lawyer		LA
		J. C. Halleth		M	Brick Mason		LA
		R. B. Patterson		M	Brick Mason		TN
		John W. Sims		M	Bar Keeper		TN
		Bridget Downing	22	F	Servant		Ireland

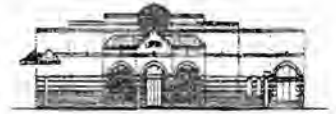


<u>P. No.</u>	<u>Hse/Fam</u>	<u>Name</u>	<u>Age</u>	<u>Sex</u>	<u>Occupation</u>	<u>Property</u>	<u>Place of Birth</u>
36/36		A. F. Clarke	38	M	Physician		KY
		Thomas H. Morris	20	M	Druggist		Wales
		R. P. Cates	14	M	Druggist		MS
37/37		J. C. Berry	30	M	Apothecary		GA
		Margaret A. Berry	22	F			AL
38/38		Mathew Estes	44	M	Physician	1,500	VA
		R. V. Estes	25	F	Wife		GA
39/39		James G. Irwin	23	M	Merchant		LA
40/40		H. Spanier	27	M	Merchant		Germany
		W. L. Macatee	22	M	Clerk		MD
41/41		Mon's. Pichot	41	M	Shoemaker		France
		Mon's. Porhem	20	M	Shoemaker		France
		Mad. Pichot	21	F	Wife		France
42/42		L. G. Rosenbaum	27	M	Merchant		Germany
		S. Rosenbaum	30	M	Merchant		Germany
43/43		L. Horn	32	M	Confectioner		Germany
		A. Horn	28	F	Wife		Switzerland
		F. Geiger	21	M			Germany
		P. Poppet	23	M			Germany
		L. Fatar	40	M			Switzerland
		John Dolff	40	M	Confectioner		Switzerland
		John Brock	33	M	Carpenter		OH
		F. Brown	30	M	Carpenter		Germany
		Henry Avers	33	M	Carpenter		Germany
		John Burleigh		M	Carpenter		OH
		H. Hayman	22	M	Merchant		Russia
		William Ryder		M	Laborer		Unknown
332 44/44		W. W. Risher	32	M	Coppersmith		MO
		C. M. C. Risher	21	F	Wife		AL
		Allan Prince	37	M	Engineer		KY
		William E. Pastien	30	M	Tinner		KY
		T. Ruddell		M	Carpenter		VA
		Eliza Ruddell	33	F			AL
45/45		S. Macks	37	M	Merchant		Poland
		M. Baer	34	M	Merchant		Germany
		W. E. Fenkley	30	M	Carpenter		MS
		William C. Matthews	31	M			MS
46/46		David Butler	32	M		1,000	TN
		S. C. Brook	21	M			NC
		William Taylor	40	M			MO
		G. W. Brown	33	M		800	NY
47/47		M. K. Mott	38	M			VA
		? Pouncey	32	M	Carpenter		Unknown
		Miller Ellickson	40	M		1,000	NC
		Thomas McConnell	28	M			AL
48/48		W. B. Wiseman	28	M			TN
		M. W. Goff	38	M			LA
		J. C. Scott	24	M			MO
		Thomas Sawyer	22	M			AR

<u>P. No.</u>	<u>Hse/Fam</u>	<u>Name</u>	<u>Age</u>	<u>Sex</u>	<u>Occupation</u>	<u>Property</u>	<u>Place of Birth</u>
49/49		James Lee	54	M		4,000	NC
		Martha K. Lee	40	F	Wife		GA
		Martha J. Griffin	28	F			TN
		Mr. Lemoine	33	M			TN
		Mrs. Lemoine	23	F			TN
50/50		D. Sam Bennett	70	M	Merchant	2,500,000	NH
		A. D. Alexander	27	M	Merchant		TN
		Sam Bennett, Jr.	28	M			NH
		John F. Estes	30	M	Laborer		AL
		Sarah C. Estes	20	F			AL
		Lemuel Gilliam	20	M	Laborer		TN
51/51		August Rist	47	M	Confectioner		Germany
		Henry Rist	18	M	Confectioner		Germany
		Magdaline Hofmaken	30	F	Servant		Germany
		Henry Moore	20	M	Laborer		Pennsylvania
		Charley Freshour	19	M	Tinner		Germany
		Henry Lewis	18	M	Baker		Switzerland
		Ernest Rist	28	M	Confectioner		Germany
52/52		James V. Taylor	33	M	Bricklayer	400	England
		Mary C. Taylor	22	F	Wife		AL
53/53		Yost Marte	46	M			Switzerland
		Magdaline Brumbach	25	F			Germany
54/54		Ernest Bonnegent	24	M			France
		Marie Bonnegent	30	F			France
55/55		Melchisedec Bell		M			NC
		Hannah Bell	46	F		4,000	NY
		Jeannette Rency	17	F			LA
		Mary Clark	36	F			KY
56/56		W.B. Wooldridge	31	M			VA
		Mary Wooldridge	35	F			TN
57/57		W. W. Watson	25	M	Blacksmith		OH
		Charles S. Stevens	34	M	Blacksmith		CT
58/58		Polner Rouse	55	M	Shingle Maker		VA
		R. S. Hampton	35	M	Shingle Maker		VA
		James Cole	32	M	Shingle Maker		IL
		Pinkney Clemons	25	M	Shingle Maker		GA
59/59		Gillie Ann Evert	41	F	Widow		SC
		Harriet R. Evert	21	F			MS
60/60		John Ball	18	M	Saddler Apprentice		England
		Allain Bonner	22	MM	Saddler		MS
61/61		R. A. Gordon	28	M	Saddler	1,800	KY
		Agnes Gordon	20	F	Wife		Scotland
62/62		Fielding Turner	30	M	Shoemaker		OH
		Caroline Turner	17	F			AL
		Julia Ann Morris	23	F			AL
333 63/63		A. Winter	37	M	Merchant		Germany
		P. Winter	23	F	Wife		Germany
64/64		A. Weinsbeck	37	M	Merchant		Germany
65/65		Richard Dawes	29	M	Tinner	1,200	England
		Rosalind Dawes	23	F	Wife		Germany
		Job Stearnes	20	M	Tinner		GA

# Shreve Memorial Library

Broadmoor Branch  
Genealogy Department  
1212 Captain Shreve Drive  
Shreveport, Louisiana 71105



Genealogy Office (318) 219-3468  
Fax (318) 868-9464

Dear Friends,

It's hard to believe, but it's already been nine months since the Genealogy Department moved into the new library and just over a year since I became the Genealogy Librarian. These past months have been wonderful. The Genealogy Department has gone through several changes and improvements in this short time span with many more changes planned.

Patron usage has increased dramatically compared to the old library. Not a day goes by that we are not busy anymore. We've had patrons visiting us from as far away as California, Colorado, and Minnesota. Book usage statistics are showing that several hundred books are being used every month. In fact, patron usage has increased to the point that the department was allowed to hire an extra staff member, mainly to shelf.

The Genealogy Department has also been fortunate enough to receive many donations from you, the patrons. Two patrons have been kind enough to donate a majority of their personal library, totaling almost one hundred books and periodicals each. I have also been attempting to acquire all of the World Family Tree Maker CD's. I believe we are only about 10 CD's short of having the full collection. Additionally, I have the *Passenger and Immigration List*, *Scottish Immigration List* and many other titles on CD. Thanks to a state funded grant, genealogy patrons now have access to all of *Ancestry.com* (except for census records) free at any Louisiana public library.

Several months ago, I began offering basic Internet Genealogy courses. The response to these classes has been outstanding. Currently there is a waiting list to take these sessions, which I hope to eliminate by offering more of them on a regular basis. I also plan on offering additional courses on topics such as *Ancestry.com*, *Familysearch.com*, *Roots Web*, and basic "how to" type classes. Please stay tuned for additional information and sign-up sheets.

As far as long terms goals are concerned, I have two major objectives. The most obvious is obtaining all the census records. Secondly, I would like to obtain the necessary equipment to conduct my Internet classes to a larger audience, or be able to offer the classes outside of the library.

In closing, I would like to extend a thank you to all of our patrons for their support and use of the Genealogy Department. When coming to visit us, please sign the guest register on the Genealogy circulation desk so we can have a record of your visit. Also, stop by and say Hi! to our new staff members, Carol and Kahalia.

Sincerely,

Faedra M. Wills  
Genealogy Librarian

## WEBSTER PARISH, LA TAX ASSESSMENT ROLL, 1889

This concludes an index of the 1889 tax assessment roll; the records on the microfilm contain a complete property description by each landowner's entry, the cash value of land, the cash value of town lot and improvements thereon, the cash value of livestock and animals, the cash value of wagons, carriages, and other vehicles, the cash value of all merchandise or stock on hand, and money loaned or in possession. This year begins on Roll #52.252 labeled "Webster 1894" and continues on Roll #52.253. An \* behind the name indicates only poll tax. The microfilm is located in the Genealogy Collection at the Broadmoor Branch of Shreve Memorial Library in Shreveport LA. (Index of this year began Vol. XI, No. 3)

<u>Name</u>	<u>Ward</u>	<u>Acres</u>	<u>Name</u>	<u>Ward</u>	<u>Acres</u>
Waggoner, Seth B.	1	80	White, Irby	4	
Waggoner, J. L.	1	80	White, J. A.	4	160
Ward, W. D.	1	120	Wills, Mrs. M. P.	2	160
Ward, E. W.	1		Wilkins, Mrs. L. A.	4	120
Walker, Pat H.	4		Wise, G. J.	1	120
Watkins, L. K.	4	80	Williams, Ben	1	160
Watkins, J. D.	4	1,940	Wilson, D. C. & Co.	5	
Ware, Ike*	5		Williams, John	5	
Warner, Harry*	5		Wise, Walter	1	166
Watkins, George*	2		Wise, W. A.	1	
Washington, Charlie	4		Williams, Joseph	1	160
Wallace, T. B.	5		Williams, Miles	4	80
Washington, George	4		Wise, J. D.	1	
Warren, Edmond	4	80	Webb, J. Y. Sr.	4	4,418
Watkins, Mrs. Manervy	4	2	Willkins, Mrs. Nellie	4	40
Warren, John	4		Williams, Est. Charlie	4	
Walker, Frank	5		West, George W.	4	
Waller, Alec	3		Williams, Frank	2	
Watson, Berry	3		Wilkerson, S. F.	3	80
Wattis, Mrs. M. C.	2	40	Wesson, Bill*	3	
Walker, Mrs. Serena	2	80	Wise, J. O.	1	160
Wallace, Mrs. C. E.	1	80	Wesley, Thomas	1	40
Wallace, T. J.*	1		Willoughby, Alec	4	80
Walker, N. B.	3		Williams, Robert	3	
Washington, Henry	1		Williams, John	4	
Watson, C. S.	4		Webster, Dan	3	
Watson, Mrs. Mary A.	4	329	Williams, Jack	1	
Ware, Robin	4	6	Williams, Mose	3	40
Washington, Mrs. Fannie	3	80	Williams, Harry*	4	
Washington, David*	3		Williams, Hall*	4	
Walker, William	3	40	Williams, Isaac	3	
Webb, Richard	1		Wilson, D. C. & Co.	5	320
Webb, T. T.	4		Whitehead, T. P.	4	
Webb, Bolin	4	160	Wilkins, J. C.*	4	
Weatherston, Seth	4		Woodard, Mrs. S. L.	5	860
Wells, W. C.	1	40	Worsham, J. C.	5	80
Webb, S. G.	4		Woodard, Dock	1	
Webb, Mrs. Sallie	4		Woodard, Dr. J. E.	5	294
Webb, J. Y. Jr.	4	200	Wortham, Patton*	1	
White, Z. F. & Eliza	4	160	Wortham, Payton*	1	

WEBSTER PARISH, LA TAX ASSESSMENT ROLL, 1889 (Continued)

<u>Name</u>	<u>Ward</u>	<u>Acres</u>	<u>Name</u>	<u>Ward</u>	<u>Acres</u>
White, Irby	4		Wilburn, Amos*	4	
White, J. A.	4	160	Williamson, J. H.	3	160
Wills, Mrs. M. P.	2	160	Wiley, David	3	
Wilkins, Mrs. L. A.	4	120	Wood, Joseph	4	
Wise, G. J.	1	120	Woodard, Mrs. Lucindy	5	213
Williams, Ben	1	160	Wood, Prian*	4	
Wilson, D. C. & Co.	5		Wood, Charles*	3	
Williams, John	5		Wood, James	1	
Wise, Walter	1	166	Wiley, Est. S. S.	3	240
Wise, W. A.	1		Washington, Ike	4	
Williams, Joseph	1	160	Ward, Enos	4	
Williams, Miles	4	80	Walden, Dallas	4	
Wise, J. D.	1		Waggoner, W. J.	1	
Webb, J. Y. Sr.	4	4,418	Waggoner, A. M. P.	1	200
Willkins, Mrs. Nellie	4	40	Waters, Mrs. Manervy	3	
Williams, Est. Charlie	4		Weatherston, Eli	4	
West, George W.	4		Wheeler, Allen*	4	
Williams, Frank	2		Wheelis, J. N.	4	
Wilkerson, S. F.	3	80	Wheelis, Mrs. E. A.	4	
Wesson, Bill*	3		White, W. C.	4	760
Wise, J. O.	1	160	Williams, Dr. Robert	5	260
Wesley, Thomas	1	40	Williams, Clabe	4	
Willoughby, Alec	4	80	Williams, Mrs. Sarah	4	
Williams, Robert	3		Williams, J. M.	5	
Williams, John	4		Williams, Charlie*	1	
Webster, Dan	3		Wyatt, Bret	4	
Williams, Jack	1		Ward, Mrs. Kate, A. B. George Agt	3	880
Williams, Mose	3	40	Walker, Martin	1	80
Williams, Harry*	4		Webb, Allen	4	
Williams, Hall*	4		Wiley, J. O.	3	
Williams, Isaac	3		Wheatly, Levi	4	
Wilson, D. C. & Co.	5	320	Wood, Randall	3	
Whitehead, T. P.	4		Worley, Mrs. F. R.	4	50
Wilkins, J. C.*	4		Wilson, David*	4	
Woodard, Mrs. S. L.	5	860	Wilkins, Miss C. C.		
Worsham, J. C.	5	80	Walther, Mrs. E. W.	4	360
Woodard, Dock	1		Wood, Mrs. Nancy		
Woodard, Dr. J. E.	5	294	Wilson, Frank*	4	
Wortham, Patton*	1		Walker, Warren	5	
Wortham, Payton*	1		Walker, Thomas J.*		
Woodard, W. G.	5	1,089	Washington, George*	1	
Wrenn, A. G.	4	219	Washington, George*	4	
Wortham, Wesley	1	417	Washington, Willis	1	
W. U. T. Co.			Waggoner, A. L.	1	
Wrenn, G. L. P.	4	1,169	Weaver, A. C.*	3	
Wrenn, T. A.	4	372	Williams, Hill*	2	
Williams, Isaac	1	200	Wiston, Alford	3	
Washington, Columbus	4		Weaver, Elbe	3	
Waller, George	4		Wrenn, W. J. E.	4	

WEBSTER PARISH, LA TAX ASSESSMENT ROLL, 1889 (Continued)

<u>Name</u>	<u>Ward</u>	<u>Acres</u>	<u>Name</u>	<u>Ward</u>	<u>Acres</u>
Waller, Henry*	3		Weston, J. W.	1	
Washington, Tom	1		Wallis, James R.*	5	
Washington, Bob	4		Waggoner, W. J.	1	
Washington, Robin	4		Waggoner, A. M. P.	1	200
Ward, Monroe*	4		Waters, Mrs. Manervy	3	
Watson, William	3		Weatherton, Eli	4	
Watson, Willis	1		Wheeler, Allen*	4	
Walker, Jackson	4	70	Wheelis, J. N.	4	
Walker, Green*	3		Wheelis, Mrs. E. A.	4	
Walker, Jesse*	3		White, W. C.	4	760
Walker, Oliver*	3		Williams, Dr. Robert	5	260
Walker, William*	5		Williams, Clabe	4	
Walker, Robert*	4		Williams, Mrs. Sarah	4	
Walker, Dock*	5		Williams, J. M.	5	
Walker, Edmond*	4		Williams, Charlie*	1	
Walker, Pearce	4		Wyatt, Bret	4	
Walker, Est. A. B.	1	150	Ward, Mrs. Kate, A. B. George Agt	3	880
Walker, A. J.	5	79 3/4	Walker, Martin	1	80
Waggoner, E. P.	1	320	Webb, Allen	4	
Waggoner, B. W.*	1		Wiley, J. O.	3	
Walter, Richard	4	38	Wheatly, Levi	4	
Webb, Mrs. Kate	4		Wood, Randall	3	
Weaver, W. W.	2	100	Worley, Mrs. F. R.	4	50
Wilburn, Joe	1		Wilson, David*	4	
White, E. M.	4		Wilkins, Miss C. C.		
Williams, Zack	5	80	Walther, Mrs. E. W.	4	360
Williams, George B.	1	80	Wood, Mrs. Nancy		
Williams, Henry	2		Wilson, Frank*	4	
Williams, Dennis*	1		Walker, Warren	5	
Williams, R. W.*	1		Walker, Thomas J.*		
Williams, Thomas	1		Washington, George*	1	
Williams, T. M.	1		Washington, George*	4	
Williams, Ben	1	160	Washington, Willis	1	
Williams, Mical*	3		Waggoner, A. L.	1	
Williams, Aaron	1		Weaver, A. C.*	3	
Williams, Columbus	4		Williams, Hill*	2	
Williams, Neal*	5		Wiston, Alford	3	
Wilson, Leroy*	3		Weaver, Elbe	3	
Wimberly, Mrs. M. L.	5	400	Wrenn, W. J. E.	4	
Wimberly, Charles*	2		Weston, J. W.	1	
Winghard, Primus*	5		Wallis, James R.*	5	
Wilburn, Amos*	4		Washington, Buss*	3	
Williamson, J. H.	3	160	Webb, J. T.*	4	
Wiley, David	3		Webb, Henry		
Wood, Joseph	4		Wilson, Lee		
Woodard, Mrs. Lucindy	5	213	Wise, Jesse	1	
Wood, Prian*	4		Wiley, John	1	
Wood, Charles*	3		Whitney, Lewis*	1	
Wood, James	1		Williams, Lee Jr.	3	

## WEBSTER PARISH, LA TAX ASSESSMENT ROLL, 1889 (Continued)

<u>Name</u>	<u>Ward</u>	<u>Acres</u>	<u>Name</u>	<u>Ward</u>	<u>Acres</u>
Wiley, Est. S. S.	3	240	Wesley, George*	4	
Washington, Ike	4		White, H. O.*	4	
Ward, Enos	4		West, Richard Est. Goodnight	4	
Walden, Dallas	4		Yates, Aaron	2	
White, Henry*			Young, Dan	4	
Wize, A. J.*			Youngblood, James T.*	4	
Wilmouth, Squire*			Youngblood, Jacob	4	360
Wyatt, Judge*			Young, W. J.	2	160
Walton, Peter*			Young, Louis	3	
Washington, Russell*	4		Youngblood, Est. T. F.	4	
White, Emanuel	3		Youngblood	3	120
Washington, David	3		Yates, Tobe	2	
Ward, Shelton*	4		Young, Phillip*	4	
White, S. F.*	4		Youngblood, Alec*	4	
Washington, Rip*	4		Yates, L.	2	
Wilkerson, J. C.*	4		Youngblood, A. A. & J. E.	4	160
Willis, Asbury*	4		Youngblood, J. N.	4	
Wheeler, Cotton*	4				

*Conclusion*



### New Orleans GenWeb Needs Helpers

The New Orleans GenWeb has posted on the internet the New Orleans Death Index 1804 thru 1876 which is nearly complete which represent 2,161 pages of the New Orleans Death Index and the New Orleans Birth Index 1790 thru 1868 with 1,237 pages being assigned out of 1,788 pages. Many pages of the New Orleans Birth Index assigned have been completed and posted to the web page of the New Orleans GenWeb.. The assignments to date represent the first roll of indexes for each of the birth and death indexes on microfilm. The volunteers intend to continue on the New Orleans Birth Index through the year 1885. There is still a lot of input to do after that. Address of the New Orleans GenWeb project is: <http://www.rootsweb.com/~usgenweb/la/orleans.htm>

Currently, forty-eight volunteers are entering the New Orleans Birth Index into an Excel spreadsheet (other programs acceptable) . A volunteer group of genealogists from around the U.S and two foreign counties have banded together to input the New Orleans Birth and Death index for posting on the web. We have had quite a bit of feedback from researchers who have found their ancestor with these indexes on the web.

The Louisiana State Archives is providing xerox copies of the index pages to input the data into a spreadsheet. A volunteer is usually assigned 20-25 pages to input, which the Louisiana State Archives mails to the volunteer.

If any of you would like to become a part of this worthwhile project, please contact Ben Achee at [bachee@shreve.net](mailto:bachee@shreve.net)

# OSBORNE FUNERAL HOME RECORDS - INDEX

## Book X -- January 2, 1932 to March 18, 1934 (Part 2)

This is an index of the burial records of the Osborne Funeral Home in Shreveport, LA. The information is taken from microfilmed copies of the individual record sheets; these sheets contain a wealth of information including name, date of death, residence, occupation, age, physician, funeral data, cemetery, clergyman, cause of death, parents, marital status, etc. These records were filmed by members of Friends of Genealogy, Inc. and copies of the microfilm are located in the Shreve Memorial Library Genealogy Collection, Shreveport, LA, the Allen County Library, Fort Wayne, IN, the Central Branch Library in Conroe, TX, the Dallas Public Library in Dallas, TX, and the Family History Library in Salt Lake City, UT. (Series began in Vol. VII, No 3, 1995)

<u>Name of Deceased</u>	<u>Age</u>	<u>Page</u>	<u>Name of Deceased</u>	<u>Age</u>	<u>Page</u>
Dyer, Helen Doris	11	301	Wills, Mrs. Dorcas Mildred	55	330
Brown, Mrs. Mabel B.	45	302	Bosley, Mrs. Joseph H.	68	331
Busbey, Joseph Leon, Jr.	55	303	Morgan, William M.	65	332
Thompson, James Scott	75	304	Crook, Robert Louis	88	333
Sheffield, Inf. Of J. S.	Stillborn	305	Murphy, Durward M.	62	334
Maher, William Edward	76	306	Stevens, Elisha Alexander	56	335
White, Joe D.	77	307	Plowman, Charles Lee, Jr.	32	336
Harper, Riley Brooks	41	308	Jordan, Elwood S.	38	337
Alexander, Mrs. Caroline R.	82	309	Farnell, Mrs. Edgar	55	338
Huett, Charley	36	310	Osborne, George A.	72	339
Ferguson, James Thomas	70	311	Walters, Mrs Mattie Montgomery	37	340
Hollenshead, Franklin Emmitt	29	312	Burton, Marilyn Faye	1	341
Mason, Mrs. Josie Irene	41	313	Bryant, Bertha Lee	17	342
Bagley, Byrt E., Sr.	44	314	Brewster, Harry Cyril	64	343
Dortch, Laura E.	86	315	Walker, Mrs. Jennie Norris	78	344
Crawford, Julie Eulalie	23	316	Kiser, Ned. L.	62	345
Ratcliff, Inf. Of Mrs. A. M.	Miscarriage	317	Seaman, George Benson	61	346
Butler, Percy C., Sr.	56	318	Sebastian, James A.		347
Deen, Martha	75	319	Jones, Mrs. Nora Maud	54	348
Pennington, Ira Jackson	27	320	Wooten, Billy Nash	2	349
Byrd, James Fred	50	321	Bayliss, LeRoy Bellmont	18	350
Frame, Mrs. Julia E.	75	322	Brown, John Peny, Sr.	57	351
Johnston, Joseph Eggleston	55	323	Lee, Dr. Robert E.	43	352
Lyman, Mrs. Ellen B.	76	324	Adair, Edith Walton	29	353
Shadovens, Nathan E.	29	325	Barrow, Wylie C.	67	354
Terwilligh, Oscar Hanson	75	326	Boyer, Mrs. Nellie Mae	45	355



<u>Name of Deceased</u>	<u>Age</u>	<u>Page</u>	<u>Name of Deceased</u>	<u>Age</u>	<u>Page</u>
Bell, William Marian	67	327	Fletcher, Thomas Jefferson	75	356
Hart, Mrs. Rhoda Peny	55	328	Riddick, Mrs. Catherine C.	56	357
Swor, Martha Alice	78	329	Barmore, Mrs. Mary Colvin	38	358
Prichard, Mrs. Florence E.	63	359	Ricou, Mrs. Emily Triscoui	57	399
Fouts, Mrs. Emma J.	74	360	Brogdon, John	81	400
Fruar, Pierce Tawles	44	361	Frey, Mrs. Jessie Gibbs	71	401
Gray, Mrs. Eliza	61	362	Tillman, Joe Sims	39	402
Phaneuf, Mrs. Mary Elizabeth	79	363	Jackson, W. C.	60	403
Themedy, John A.	27	364	Allen, Mrs. Mary V. H.	55	404
Poole, Robert Tilden	56	365	Alexander, Thomas Edwin	3 Mos.	405
Holmes, Mrs. Dora	73	366	Gammill, Mrs. Helen A.	40	406
Lancaster, Mary Louise Beale	34	367	Gahagan, Mrs. Mary L.	91	407
Shepherd, Ralph M.	3 Mos.	368	Scott, Ralph C.	31	408
Calhoun, Taylor	49	369	Smith, Howard A.	60	409
Thomas, Stephen Elvin	54	370	King, Dr. Archibald B.	43	410
Green, Lillie Frances	59	371	Gillespie, John Henry	69	411
Johnson, Noonan David	65	372	Hayes, Felton Lee	1 Mon.	412
Meredith, Mrs. Ruth	37	373	Hudson, Marjoza	1	413
Holland, Rhule (Jack)	24	374	Miller, Y. Almer	49	414
Barnard, Mrs. Hazel P.	27	375	St. Agiue, Bobby Joe	5 Mos.	415
Downey, Jack Withers	50	376	Daniels, Mrs. Kate	91	416
Ray, Mrs. Mary E.	78	377	Johnson, A. L.	51	417
Harrington, Cyrus H.	43	378	Wilson, David Henry	72	418
Trishell, Inf. Son of Dorothy	Stillborn	379	Wilcox, Beverly Jane	17	419
Currie, Fred L.	38	380	Farrar, Mrs. Mary Indiana	82	420
Alexander, Mrs Eva Crenshaw	50	381	Julian, Luther Isaac	64	421
Hanks, Mrs. Gladys	30	382	Martin, Mrs. Lucille	57	422
Laing, Joseph	85	383	Burgess, Mrs. Emma Clark	69	423
Jones, Alice Jenkins		384	Howard, Mrs. Ida Mae	24	424
Sish, Jesse Leonard	33	385	Gibson, Roy Alexander	50	425
Hays, Joseph William	81	386	Hansen, Mrs. Angie L.	69	426
Rodefeld, Inf. Son of N. W.	Premature	387	Reeve, Talmadge Elmer	1	427
Thompkins, Joseph C.	40	388	Mulhusen, Lee F.	46	428
Stewart, Mrs. Nannie Leona	68	389	Drake, Rev. William W.	62	429
Phillips, Willie Hugh, Sr.	78	390	Wamer, Mrs. May Hilburn	60	430
Bres, Mrs. Dora	81	391	Welsh, Thomas Russell	42	431
Bell, Mrs. Mary Cornelia	89	392	Guinn, Clyde	38	432
Baker, Mrs. Adele Rexach	32	393	Parker, Mrs. Lillie Hamilton	48	433
Bloxom, Leslie F.	44	394	Norton, Herbert S.	77	434
Jacobs, Mrs. Frances Abrams	78	395	Vaughan, Henry C.	25	435
Dyer, Jabez G.	82	396	Brumble, George W.	81	436
Sutherland, Robert Royal	75	397	Kennedy, Mrs. Hattie D.	77	437

<u>Name of Deceased</u>	<u>Age</u>	<u>Page</u>	<u>Name of Deceased</u>	<u>Age</u>	<u>Page</u>
Townsend, Mrs. Willie Lee	22	398	Walker, Mrs. W. N.	79	438
Cordaro, John A.	32	439	Rider, Milburn L.	74	479
Gayle, Edwin O.	30	440	Bancroft, Donald Huntley	43	480
Durham, Thomas Jefferson	56	441	Ward, Mrs. Sudie Manley	81	481
Crain, Lawrence Sidney	81	442	Young, Mrs. Liza	47	482
Osburn, Jesse Duncan	72	443	Worthington, Edward Addison	77	483
Fulco, John R.	5	444	Norton, Emma Lola	2 Mos.	484
Peters, William Y.	84	445	Ragsdale, Mrs. Ida Magnon	59	485
Freeman, George L.	24	446	Hill, Robert Taylor	55	486
Griffin, Harden Thomas	52	447	Howell, Mrs. Jewel	25	487
Osteen, David Fletcher	77	448	Glassell, William E.	78	488
Costley, William B.	71	449	Cook, Mrs. Ella May	50	489
Home, Charles Louis	59	450	Guin, Mrs. Martha Ann	76	490
Dyer, Fred L.	48	451	Peny, Mrs. Robbie Dale	53	491
Stewart, Warren Francis	52	452	Sebastian, Mrs Mary Elizabeth	84	492
Schumaker, Inf. Son of Geo.	Stillborn	453	Bullock, Mrs. Lula J. K.	76	493
Thurmond, William T.	83	454	Gilmore, Mrs. Theresa Jane	77	494
Naff, George Washington	71	455	Franks, John Albert	78	495
Blank Form		456	Parker, Bob Haygood	16	496
Seybert, Inf Twin Son of William	Premature	457	Simpson, Miss Patricia	12	497
Ivey, Joseph Walter	40	458	Ward, Mrs. Rosa May	29	498
Kelly, Miss Yvonne	19	459	Mathews, James Edward	69	499
Griffith, Mrs. Elizabeth R.	65	460	Cage, Louis Stanward	55	500
Wellborn, Mrs. Ella	73	461	Hayne, Inf. Son of R. E.	Stillborn	501
Wright, Mrs. Mary E.	67	462	Mooning, Mrs. Mary E.	85	502
Prichett, Mrs. Guella Todd	41	463	Bounds, Mrs. Billy Burns	30	503
Adger, Robert Lee	57	464	Haynie, Mrs. Elvie	30	504
Gould, Helen Louise	1 Day	465	Welch, William	73	505
McLemore, Mrs. Nina Corrice	26	466	Pope, John Lafayette, Sr.	67	506
Blackman, William Warden	48	467	Van Duson, George F.	67	507
Scott, Mrs. Georgia Tooke	88	468	Bush, William Harry	57	508
Simpson, Mary Louise	5	469	Lyons, Mrs. Camille B.	69	509
Haddad, George	63	470	Dickerson, Mrs Elvie May Peevy	40	510
Moore, James	15	471	Alison, Jacob S.	85	511
Brazil, Lawrence Lamar, Jr.	7	472	Bufkin, Inf. Dau. Of E. T.	Stillborn	512
Hays, Mrs. Clara Elizabeth	66	473	Renfrow, William T.	59	513
King, Mrs. Lottie W.		474	Neild, George F.	78	514
Johnson, Miss Rebecca	27	475	Willis, Charles Ray	16	515
Ferguson, James T.	35	476	Walker, Mrs. Sarah Anna	81	516
Gardner, Mrs. Dollie W.	39	477	Willis, Patrick Claiborne	53	517
Keith, Daniel Wesley	20	519	Croxson, Harry Batterton	59	561
Ellis, Charles	56	520	French, Dorothy Louise	5 Mos.	562

<u>Name of Deceased</u>	<u>Age</u>	<u>Page</u>	<u>Name of Deceased</u>	<u>Age</u>	<u>Page</u>
Bush, Mrs. Anna Dorman	49	521	Farnell, Mrs. Mattie	8	563
Enders, Mrs. Isabella M.	85	522	Raburn, Harold L.	41	564
Welsh, Harry L.	39	523	Ward, Andrew D.	40	565
Busbey, Carrie L.	44	524	Petteway, Miss Laura	80	566
Mulcare, E. H.	33	525	McFerin, Inf. Dau of J. B.	Stillborn	567
Kemp, Mrs. Margret M.	62	526	Nott, Mrs. Ella Mary	73	568
Ferguson, Inf. Son of Lillian		527	Delmar, John M.	50	569
Baird, Mrs. Anna Barbara	92	528	Parker, Mrs. Frances Bearley	70	570
Jackson, Charlie Caldwell	61	529	Odom, Mrs. J. R.	67	571
Shelton, Thomas M., Jr.	27	530	Sipe, Virgil I.	38	572
Malsch, Mrs. Susie Jim	38	531	Hilborn, Mrs. Florence	65	573
Daniels, Mrs. Lena	55	532	Bufkin, Inf. Dau. Of H. T.	1 Day	574
Friend, Robert Craig	72	533	Armistead, Thomas Landon, Jr.	2	575
Wilding, William Kaspar, Sr.	74	534	Corley, Edgar L.	21	576
Hukizer, Mrs Frances Clawson	72	535	Levy, Will M.		577
DeLay, Mrs. Adah Vinson		536	Mapps, Frank P.	78	578
Brown, Mack D., Jr.	26	537	Cockran, Samuel H.	78	579
Lay, Sam	68	538	Snell, William Madison	57	580
Clemens, Ben Jacobs	67	539	Marston, Miss Albie Louise	87	581
Yarbrough, Joe Lawrence	1 Day	540	Crowder, Mrs. Allie Gregory	53	582
Picard, Dr. Micheal Shelby	54	541	Wray, Thomas	71	583
Woodard, John David	5 Mos.	542	McDade, Miss Leona	78	584
Fleener, James Lyle	26	543	Dexter, John	68	585
Carleton, Charles C.	53	544	Nattin, Mrs. Jessie Mercer	43	586
Repp, LeRoy	52	545	Nattin, John Hall	59	587
Lawson, James Benjamin	50	546	White, Jesse Lee	62	588
Tucker, Oliver McDaniell	85	547	Tuminello, Josephine	Stillborn	589
Hanson, Earl William	33	548	Robinson, Elizabeth Virginia	2 Days	590
Hendrick, Martha Ann	2	549	Glannen, William, Jr.	18	591
George, Mrs. Martha E.	74	550	Maxwell, Mrs. R. S. (Gertrude)	45	592
Spence, Melville Charles	63	551	Ardis, Mrs. Gertrude Ingersoll	85	593
Ray, Annie Cortez	21	552	Hanson, Ella Ann	7 Mos.	594
Street, Jack C.	21	553	Welsh, Mrs. Ella Russell	62	595
Maryman, Frank Chinn	26	554	Carlton, Edgar N.	52	596
Buggs, David Nelson	73	555	Davidson, John Thomas	6	597
McCarty, Inf. Son of H. W.	Stillborn	558	Palmer, Eugene G.	65	598
Schelling, Mrs. Diana Green	22	559	Stearns, Mrs. Millie Beatrice	66	599
Gutting, Otto Joseph, Jr.	18	560	Munerlyn, Inf. Son of J. O.	Stillborn	600

*To be continued.....*

**PROVIDENCE BAPTIST CEMETERY**  
**By Wanda Volentine Head**

Providence Baptist Cemetery is located in southwest Caddo Parish. Take Louisiana Highway 525 west from Spring Ridge for approximately 2.5 miles, turn right (north) on Providence Road and go approximately 1.2 miles. The cemetery is on the left in Section 3, Township 15, Range 16 West. The survey of this cemetery was made in October, 1989. When possible I have included the obituary as annotation.

McCLUNEY, James Thomas, Jr.                      18 June 1930 -7 Jul 1976  
    "Jim-Tom"

Obituary – *The Shreveport Journal*, July 8, 1976. Services are pending for James Thomas McCluney, Jr., 45, of Bethany, at Rose-Neath Funeral Home's Marshall Street Chapel. A native of Alto, MS and a Shreveport resident most of his life, Mr. McCluney died Wednesday in Houston, Texas, after a brief illness. He was a service station attendant and a member of Bethany Baptist Church. Survivors include his mother, Mrs. Lina McCluney of Bethany; and two sisters, Mrs. W. L. George, Jr. of Shreveport and Mrs. Martha Beason of Okinawa.

MEIER, John W. (Daddy)                              5 Dec 1880 – 30 Mar 1964  
    Winnifred F. (Mother)                          2 Jan 1886 – 30 Jan 1959  
    Juanita L. (Daughter)                          1 Jan 1916

Obituary – *The Shreveport Journal*, February 1, 1959, Funeral services for Mrs. J. W. Meier, 73, o4 2426 Darien St., who died Friday after a long illness, were held at 1 PM Sunday in Wellman Chapel with the Rev. Stanley Jordan, pastor of the Queensborough Baptist Church, officiating.

Obituary – *The Shreveport Journal*, April 1, 1964, Funeral services for John W. Meier, 83, of 2426 Darien St. were to be held at 1:30 PM today at the First National Funeral Home. The Rev. W. T. Furr, pastor of Queensborough Baptist Church, was to officiate. Mr. Meier died Monday at Willis-Knighton Hospital after a long illness.

ALEXANDER, Emma                                      26 Jan 1884 – 24 Mar 1931  
    (w/o James N. HARRISON)

Obituary – *The Shreveport Journal*, March 25, 1931, Funeral services for Mrs. Emma Alexander Harrison, 47 years old, of 1604 Ford Street, who died at a local sanitarium Tuesday morning following an operation, were held from the family residence Wednesday morning at 10 o'clock with the Rev. W. H. Sims, pastor of Evangel Baptist Church, officiating. Interment was in the Spring Ridge cemetery, under the direction of the Roll Osborn & Sons Funeral Home.

HARRISON, James N.                                  16 Jan 1887 – 21 Jun 1955  
    (LA Cpl 67 Co. MG TNG Center WWI)

Obituary – *The Shreveport Times*, June 22, 1955, Funeral services will be held at 9 AM Wednesday from Rose-Neath Chapel for James N. Harrison, 68, of 824 Prospect, who died at 3 AM Tuesday in a local hospital after a long illness. A native of Marshall, TX, Mr. Harrison had lived in Shreveport for the past 67 years. He was a plasterer. Services will be conducted by Fr. G. R. Baudoin, S.J., assistant pastor of St. John’s Catholic Church. Burial will be in Spring Ridge Cemetery near Keatchie. Mr. Harrison is survived by a daughter, Mrs. Lexie Frye of England; four sisters, Mrs. M. E. Moreland of Fort Worth, TX, Mrs. W. C. Deal and Mrs. H. J. Walcott, both of Shreveport and Mrs. A. D. Moore of Los Angeles, CA; three brothers, J. T. Harrison, W. B. Harrison and C. M. Harrison, all of Shreveport; and three grandchildren. Pallbearers will be nephews of Mr. Harrison, J. T. Harrison, Jr., R. E. Harrison, H. J. Walcott, Jr., J. F. Walcott, W. C. Deal, Jr. and J. H. Lane.

GILL, Margaret D. (Our Mother) 27 Nov 1819 – 23 Oct 1911

GILL, Queen Delilah (Our Sister) 15 Sep 1855 – 17 Oct 1908

GILL, Margaret Josephine (Our Sister) 24 Dec 1852 – 23 Feb 1906

FARMER, Richard Daniel 18 Jun 1915 – 6 Sep 1966  
 (Note: Has wooden cross; covered entirely with dirt and debris.)

Obituary – *The Shreveport Journal*, Sep. 7, 1966, Richard Daniel Farmer, 51, a native and former resident here, died unexpectedly at 2 PM yesterday in Pasadena, TX. Mr. Farmer, a sheet metal worker, died while on a construction job. He is survived by his wife, Mrs. Edna Farmer of Pasadena; five daughters, Mrs. Shirley mcGee, Fort Worth, TX; Mrs. Loretta Lavelle, Shreveport, Miss Susan Farmer, Miss Lynette Farmer and Miss Nancy Farmer, all of Pasadena; two sons, Richard Daniel Farmer, Jr. of Shreveport and William Raymond Farmer of Pasadena; his mother, Mrs. Ira Farmer of Shreveport; a brother, Lonnie Farmer of Shreveport; and a sister, Mrs. T. N. Parker of Boswell, OK. Funeral arrangements are incomplete under the direction of Colonial Funeral Home of Pasadena.

BRUNSON, Shirley Floyd 7 Aug 1918 – 30 Oct 1976

Essie Marie DAVIDSON 13 Mar 1922 –

(Note: His footmarker says “Red”; hers says “Susie”)

Obituary – *The Shreveport Times*, Nov. 1, 1976, Funeral services for Shirley F. “Red” Brunson, 58, of 1502 Clarence St. in Bossier City will be at 1 PM today in the Marshall Street Chapel of Rose-Neath Funeral Home. Officiating will be the Rev. Britt Nelson, a Baptist Minister. Mr. Brunson died Saturday in Schumpert Medical Center after a long illness.

HEINBACK, Gerald Martin 22 May 1944 – 4 Jan 1986  
 (U.S. Air Force, Vietnam)

TRANGMAR, Elmer Morgan (Daddy)      20 Dec 1907 – 3 July 1972

Obituary – *The Shreveport Times*, July 5, 1972, Elmer Morgan Trangmar, 64, of Corpus Christi, TX, formerly of Shreveport, died Monday at his residence after a sudden illness. Mr. Trangmar was a native of Arcota, MS and a retired carpenter. Funeral services will be conducted at 11 AM Thursday in Providence Baptist Church in Spring Ridge by the Rev. A. R. Moore, pastor of Mildred Crowe Baptist Church. Survivors include the widow; two sons, Randolph Trangmar of Shreveport and Reese Trangmar of Castor; four daughters, Nita Barkley, Carolyn Plants and Virnell Hays, all of Shreveport and Iris Trangmar of Greenville, MS; a sister, Jessie Cunningham of Vancouver, WA; two brothers, James R. Trangmar of Portland, TX and George G. Trangmar of Washogal, WA; and eight grandchildren.

BRUNSON, Edna STINSON                      24 Apr 1913 – 22 Dec 1983  
H. M.                                              16 May 1914 – 26 Apr 1980

Obituary – *The Shreveport Times*, April 28, 1980, Funeral services for H. M. Brunson, 65, of 3802 Woodrow St. are set for 4 PM Tuesday in the Marshall Street Chapel of Rose-Neath Funeral Home with the Rev. Louis Ray Ketchem, a retired Baptist minister, officiating. The Minden native died Saturday in Willis-Knighton Hospital after a lengthy illness. Mr. Brunson, a retired Civil Service employee with the Veterans Administration Medical Center, had lived in Shreveport since 1948. Survivors include his wife, Edna Brunson; his mother, Pearl Brunson of Minden; a sister, Pearl Scott of Shreveport; and a brother, S. R. “Buck” Brunson of Minden. Members of the American Legion will be pallbearers.

Obituary – *The Shreveport Times*, Dec. 23, 1983, Services for Mrs. Edna L. Brunson, 70, of Shreveport will be held at 1 PM Friday, Dec. 23, at Rose-Neath’s Marshall Street Chapel. The Rev. B. W. Nelson, retired Baptist minister, will officiate. Mrs. Brunson, born in AR and a Shreveport resident since 1944, died Tuesday at Virginia Hall Nursing Home after a long illness. She was a member of the Laurel Heights Baptist Church. She was preceded in death by her husband, H. M. Brunson. She is survived by a sister-in-law, Mrs. Sue Brunson of Bossier City; one brother, Raymond Stinson of Little Rock, AR; three nephews and one niece.

EVANS, Jessie A.                                      11 Feb 1927 – 30 Jan 1985

HILL, Joseph Larry                                      23 Jul 1938 – 29 Sep 1978

Obituary – *The Shreveport Times*, Oct. 1, 1978, Funeral Services for Joseph Larry Hill, 40, of Shreveport will be held at 1 PM today at the Rose-Neath Funeral Home Marshall Street Chapel. Mr. Hill died Friday at his home. The Rev. E. E. Scott will officiate the services. Mr. Hill had lived in Shreveport for the past 30 years. He was a painter. Survivors include his father, W. W. Hill of Vidalia; one son, Larry Joseph Hill of Shreveport; three daughters, Mary Hill Scott, Kathy Hill and Nancy Hill, all of Shreveport; and one brother, W. L. Hill of Vidalia.

DAVIDSON, Lillian A. BRUNSON (Mama)      13 Oct 1910 – 16 May 1977  
Oscar Earl (Daddy)                              12 Feb 1912 – 29 Sep 1985

Obituary – *The Shreveport Journal*, May 17, 1977, Mrs. Lillian Davidson, 66, 2809 Catherine St., died at 11:55 PM Monday in Willis-Knighton Hospital. Born in Minden, she had lived in Shreveport for 40 years and was a member of the Baptist Church. Survivors include her husband, Oscar Davidson; one son, Mickey Davidson of Charleston, SC; two daughters, Mrs. Susie A. Evans of Collidge, TX and Mrs. Doris Harmon of Lafayette; her mother, Mrs. Pearl Brunson of Minden; 10 grandchildren and six great-grandchildren; one sister, Mrs. Bessie Pearl Scott of Shreveport; two brothers, S. R. Brunson of Minden and H. M. Brunson of Shreveport. Services will be at 2:30 PM Wednesday at Rose-Neath Funeral Home Marshall Street Chapel with the Rev. E. E. Ballard officiating. Pallbearers will be R. C. Roth, W. L. Hill, Mickey Lowe, Jack Allen, Floyd Whitaker and Sidney Brunson.

DAVIDSON, Alice ROBERTSON (Mother)      23 Sep 1890 – 30 Mar 1973  
Lee Arthur (Daddy)                              27 Sep 1887 – 17 Apr 1925

Obituary – *The Shreveport Times*, April 1, 1973, Funeral services for Mrs. Alice R. Davidson, 82, will be held at 2:30 PM today in the Rose-Neath Funeral Home Chapel. Mrs. Davidson died at 6:45 Friday in the Virginia Hall Nursing Home after a long illness. Officiating for the service will be the Rev. E. E. Ballard, pastor of Providence Baptist Church of Spring Ridge and the Rev. Britton W. Nelson, a Baptist minister. Mrs. Davidson was born in Spring Ridge and had lived in Shreveport 29 years. She was a member of the Providence Baptist Church. Survivors include three daughters, Essie D. Brunson of Bossier City, Lula D. Saunders of Germantown, TN, and Mildred D. Golden of Lone Star, TX; a son, Oscar Davidson of Shreveport; 12 grandchildren; 25 great-grandchildren; and a great-great-grandchild. Pallbearers will be Mrs. Davidson's grandsons.

HILL, Mattie DAVIDSON (Mama)              18 Apr 1914 – 5 Aug 1961  
W. Willis                                              27 Aug 1904 – 24 Jul 1988

Obituary – *The Shreveport Times*, August 6, 1961, Funeral services for Mrs. Mattie Elizabeth Hill, 47, of 4024 Mangum St., will be held at 1 PM Sunday in Rose-Neath Chapel. Mrs. Hill, a native of Spring Ridge and Shreveport resident for 13 years, died at 3:30 AM Saturday in Willis-Knighton Hospital after an extended illness. The Rev. A. C. Lawton, pastor of Mildred Crowe Baptist Church and the Rev. Jack Merritt, pastor of Ingleside Baptist Church will officiate. Pallbearers will be A. W. Hill, L. E. Hill, John B. Teer, S. F. Brunson, J. F. Saunders and C. B. Golden. Survivors include her husband, William W. Hill; two sons, Larry Hill of Shreveport and Billy Hill of Monroe; her mother, Mrs. Alice Davidson of Shreveport; three brothers, O. E. Davidson of Shreveport, H. O. Davidson of Marshall, TX, and Army Sgt. W. E. Davidson, stationed in Germany; three sisters, Mrs. S. F. Brunson of Shreveport, Mrs. John Saunders of Germantown, TN and Mrs. C. E. Golden of Odessa, TX.

Obituary – *The Shreveport Journal*, July 25, 1988, Services for Mr. W. Willis Hill, 83, of Vidalia, LA will be held at 1 PM Tuesday, July 26, at Rose-Neath's Marshall Street Chapel in Shreveport, LA. The Rev. Tommy Guthrie of Ashdown, AR will officiate.

*To be continued .....*

## Members of the Gen. Leroy Stafford Camp No. 3, United Confederate Veterans

By Joe Slattery

Following the War Between the States, groups of veterans who had served in the Confederate Army and Navy began organizing throughout the South. Their main objective was the welfare and comfort of the men who had "worn the gray." In time, the veterans' groups realized that their efforts would be more effective if they combined their efforts into one organization. Thus, on June 10, 1889, the United Confederate Veterans was established in New Orleans. The Gen. Leroy Stafford Camp was the third such camp established in the U.S.; the first two camps were in Richmond and New Orleans. Members of the Gen. Stafford Camp were mainly from Shreveport and Caddo Parish, LA. The Camp was named in honor of Confederate General Leroy Augustus Stafford, born 1822 near Cheneyville, LA and died at the Battle of the Wilderness in Virginia. *[All cemeteries listed are located in Caddo Parish, LA unless otherwise noted.]*

This information provided by Joe Slattery, genealogy librarian at Shreve Memorial Library. Joe is seeking information on all of these veterans - if you can help him out, contact him at Shreve Memorial Library, Genealogy Dept., 1212 Captain Shreve Drive, Shreveport, LA 71105 <joeslatt@yahoo.com>

<u>Veteran's Name</u>	<u>Birth - Death</u>	<u>Company (Unit)</u>	<u>Cemetery</u>
ADAMS, Samuel		Co. E, F & I, 17th LA Inf.	
AILES, George W.		Co. F, 19th LA	
ALEXANDER, William J.	1841 - 1900	Co. B, 28th LA	Greenwood
ALLEN, Nathaniel Sykes	1829 - 1922	Capt., Co. A, 14th TX	Forest Park
ARNOLD, James W.		Co. K, 3rd TX Cav.	
AUSTIN, Edward M.		Eufaula Light Art., AL	Oakland
BAILEY, G. W.		12th LA Inf. ??	
BAILEY, James H.	1845 - 1911	Co. A, 11th VA Inf.	Greenwood
BAILEY, John Jefferson	1845 - 1926	Co. K, 1st LA Cav.	Greenwood
BAINS, Robert L.	1842 - 1927	Co. I, 27th LA Inf.	Forest Park
BALL, Fred	1834 - 1890	Capt. Nutt's Co., LA Cav.	Oakland
BARKER, Bradford P.	1836 - 1913	Co. A, 6th LA Cav.	Oakland
BARTLETT, Joseph R.	1846 - 1927	Co. G, 46th GA	Forest Park
BAUMGARDNER, Jacob Alex.	1847 - 1925	Co. D, 7th Battn., VA Reserves	Lay Cemetery, B. C.
BAZER, Isaiah Edward	?? - 1923	Co. F, 19th LA	
BECKWITH, Samuel	1834 - 1912	Lt., Co. I, 27th LA	Greenwood
BELCHER, Warren P.		6th LA Cav.	Oakland
BELL, Thomas Fletcher	1836 - 1912	Capt., 8th MO Inf.	Forest Park
BEVANS (?), W. G.			
BIGGER (?), J. H.		Co. 6, 2nd MS Cav.	
BILLINGSLEY, L. K.		Co. E, 17th TX	
BLEWER, Edwin L.	1845 - 1919	Co. E, 31st LA	Greenwood
BOLLING, W. T.		Co. C, 2nd TN	
BOOTY, J. A.		Corp., Co. F, 19th TX Cav.	
BOURQUIN, Gustave A.	1844 - 1889	Co. I, 9th LA	Forest Park
BROWN, F. M.	?? - 1923	39th NC	
BRUNER, W. I.		Capt., Co. C, 3rd MS	
BUCKELEW, Wilbur F.	1841 - 1911	6th LA Cav.	Greenwood
CAIN, Frank	1836 - 1905	Capt. Nutt's Co., LA Cav.	Oakland
CALDWELL, John		Denson's Cav., 6th LA	
CALLOWAY, Felix	1834 - 1919	Co. A, 11th GA Art.	Greenwood
CALVERT, John H.		Co. B, 10th MS	



<u>Veteran's Name</u>	<u>Birth - Death</u>	<u>Company (Unit)</u>	<u>Cemetery</u>
CASTLE, David	1848 – 1903	Semmes Battery, LA Light Art.	Greenwood
CHASE, Thomas B.	1843-1930	Co. G, 18ty LA Consol. Inf.	Greenwood
CHASE, William F.	1842 - 1914	Co. F, 1st Spec. Battn. Inf.	Greenwood
CHELETTE, David	?? - 1923	Co. D, 2nd LA Cav.	St. Joseph's
CLAY, D. M.	1837 - 1889	Surgeon	Oakland
CLEAVER, James M.	?? - 1924	2nd Lt., Co. E, 31st LA	Forest Park
COLQUITT, George A.		Co. A, 6th LA Cav.	
CORBETT, John	1838 - 1905	Sgt., 8th MO Cav.	Greenwood
CORNES, James M.	1830 - 1893	Col., 8th VA Cav.	Oakland
COSGROVE, James H.		Co. F, 2nd TX Cav.	
COX, W. C.	1840 - 1936	Corp., Co. A, 2nd LA	Greenwood
CRAWFORD, Louis Z.	1848 - 1934	Prudent's Battery, GA Light Art.	Greenwood
CREWS, Berry T.		Co. D, 11th SC Inf.	Greenwood
DAVIS, J. W.		Co. B, 3rd LA Cav.	Oakland
DANIEL, W. A.		Co. F, 17th LA	
DENNIS, Hiram S.	1845 - 1921	Co. B, 4th GA Batt.	Eppes
DEWING, William T.		Co. A, 14th Batt.	Oakland
DINGLE, Marcus	1843 - 1930	10th MO	Greenwood
EGAN, James C.	1822 - 1911	Surgeon, Inspector of Hospitals	Mt. Lebanon (Bienville)
ELLET, W. A.	?? - 1921	Co. B, 14th TX	Mooringsport
ENDERS, William	1832 - 1901	Capt. Nutt's Co., LA Cav.	Greenwood
EVANS, C. F.		Crescent Reg.	
EVANS, G. V.	1839 - ??	Sgt., Co. H, 11th MO Inf.	Greenwood
FERRY, William H.		Co. C, 2nd LA Inf.	
FISH, William J.	1828 - 1915	6th LA Cav.	Oakland
FLOURNOY, Camp	1841 - 1894	Major, 19th LA Inf.	Greenwood City
FORD, William P.	1848 - 1892	Co. D, 6th LA Cav.	Oakland
FORTSON, J. L.		Capt., Co. H, 2nd LA Inf.	Oakland
FUNDERBURK, Edward B.	?? - 1912	Co., H, 28th LA Inf.	Oakland
GALL, Jacob	1833 - 1901	Co. D, 19th LA Inf.	Hebrew Rest
GAMBLIN, John S.	1839 - 1916	Sgt., Co. C, 16 th LA Inf.	Greenwood
GAUTIER, John		12th LA Inf.	
GILL, John L.	1838 - 1901	Co. C, Chalmette Militia, LA	Oakland
GILLESPIE, George M.	1847 - 1913	Co. I, 2nd LA Cav.	Greenwood
GILLILAND, Benjamin F.	1847 - 1907	Denson's Cavalry Squadron, LA	Oakland
GILMORE, Jerome B.	1827 - 1900	Col., 3rd LA Inf.	Greenwood
GOTHIER, M. E.		Co. F, 17th LA Inf.	
GRAY, Robert A.	1830 - 1918	Asst. Surgeon, 1st Spec Batt Inf.	Oakland
GREGG, N.		Co. A, 3rd TX Cav.	
GRIFFIN, Joseph F.		Asst. Surgeon, Co. I, 27th LA Inf.	Oakland
GRIM, L. P.	1836 - 1892	Cowan's Battery Light Art.	Oakland
GROSJEAN, Victor	1844 - 1928	Co. D, 4th LA Inf.	Greenwood
GRYDER			
GUSTINE, Lemuel	?? - 1893	2nd Lt., Co. B, 25th LA Inf.	Greenwood
HACKETT, J. H.		Co. C, 18th MS	
HAMILTON, William B.	1841 - 1888	Corp., Co. D, 9th LA Inf.	Oakland
HARGROVE, John L.	1824 - 1898	Capt., Co. G, 11th MS Cav.	Oakland
HARGROVE, Patrick H. L.	1837 - 1905	Sgt., Co. K, 9th LA Inf.	Greenwood
HARRISON, William	1829 - 1914	Col., 6th LA Cav.	Quitman Co., GA

<u>Veteran's Name</u>	<u>Birth - Death</u>	<u>Company (Unit)</u>	<u>Cemetery</u>
HARVEY, J. B.		Co. D, 4th MS Cav.	
HARVEY, Thomas A.	1845 - 1924	Co. A, 5th MS Cav.	
HAUGHTON, Milus W.	1843 - 1900	Co. B, 19th LA Inf.	Fillmore (Bossier)
HEAD, Samuel C.	?? - 1887	Asst. QM, 25th LA Inf.	Oakland
HEINE, David C.	1844 - 1923	Capt. Nutt's Co., LA Cav. (Red River Rangers)	Hebrew Rest
HILL, Augustus	?? - 1924	Co. D, 49th GA Inf.	Forest Park
HILLEY, Francis	1839 - 1929	Sgt., Co. H, 17th LA Inf.	Greenwood
HINKLE, Eli G.	1840 - 1921	Co. B, Pindall's Battn, Sharpshooters, LA	Oakland
HOLCOMBE, B. G.	1836 - 1918	Corp., Co. D, 46th GA Inf.	Greenwood
HOLLAND, Daniel G.	1847 - 1907	Co. A, Trans-Miss Cav.	Oakland
HOLLIS, Charles B.	?? - 1925	Co. B, Goode's Battn., TX Cav.	
HOLMES, Alexander W.		Co. K, 20th GA Inf.	
HORAN, John J.	1835 - 1895	Sgt., Co. A, Consol. Crescent Reg, LA Inf.	St. Joseph's
HORTON, Frederick S.	1843 - 1926	Co. D, 6th GA Inf.	Greenwood
HOUGH, Henry C.		Co. I, 3rd LA Inf.	
HUGHES, John V.		Co. A, 25th LA Inf.	Oakland
HUGHES, William Josiah	1837 - 1921	Capt., Co. D, 9th LA Inf.	Rocky Mount (Bossier)
HUNTER, A. C.		1st LA Cav.	
HUTTON, Thomas H.	1822 - 1904	Capt., Crescent Artillery	Greenwood
HYAMS, H. P.	1830 - 1896	11th LA Inf.	Oakland
JACOBS, Thornton E.	1836 - 1891	Corp., 1st LA Inf.	Oakland
JEFFRIES, James	1836 - 1910	Co. K, 25th LA Inf.	Greenwood
JOHNSON, George W.		Co. A, 16th LA Inf.	
JOHNSON, R. W.		8th KY Mtd. Inf.	
JONES, Montford S.	1845 - 1899	Co. G, 3rd LA Cav.	Oakland
JONES, S. O.	1842 - 1929	Co. K, 27th LA Inf.	Eppes
JORDAN, A. S.		Morgan's Command	
JORDAN, Thomas H.		6th Alabama	
KENDALL, George W.	1831 - 1903	1st Lt., 25th LA Inf.	Oakland
KLINE, W. B.	?? - 1924	Co. A, 19th TN Inf.	
KING, J. B.	?? - 1926	TX	
KING, W. A.		Co. E, Willis TX Battn. Cav.	
KING, Washington W.	1844 - 1930	Co. G, 14th AL Inf.	Forest Park
KINNEY, William	1830 - 1907	Capt., Co. F, 3rd LA Inf.	Oakland
KEYSER, B. H.		Co. H, 29th MS Valley Reg. Or 1st Conf. Reg.	
JONES, John William	1822 - 1895	Capt., Anacoco Rangers, 19th LA Inf.	Oakland
LAUGHLIN, E. M.		Sgt., Co. E, 12th TX Cav.	Greenwood
LACY, E. W.	1845 - 1910	Shreveport Grays	Greenwood
LAFITTE, Remy L.	1834 - 1914	Corporal, Co. I, 19th LA Inf.	
LAKE, John	1840 - 1906	Co. B, Brooks Troops, Hampton Cav., SC	Oakland
LASSITER, Wm.			
LEONARD, Edward S.	1830 - 1885	Co. A, 1st LA Inf.	Greenwood
LEONARD, Frederick A.	1842 - 1918	Co. B, Consolidated Crescent Reg, LA	Greenwood
LEVY, Charles H.	1837 - 1926	1st Engineer, C.S. Navy	Forest Park
LINDSAY, Robert H.	1832 - 1910	Lt. Col., 16th LA Inf.	Oakland
LOVING, James W.		Talley's VA Artillery	
LUCAR, G.	1834 - 1915	Co. D, 59th AL Inf.	Greenwood

<u>Veteran's Name</u>	<u>Birth - Death</u>	<u>Company (Unit)</u>	<u>Cemetery</u>
LUCH, L. W.		Co. F, 10 <sup>th</sup> TX Cav.	
MABRY, Roland M.	?? - 1928	Wood's Regiment, MS Cav.	Forest Park
MARCH, David	1836 - 1905	Co. I, 3rd LA Inf.	Hebrew Rest
MARSDEN, Francis	1846 - 1914	Cabell's Battn. Richmond Howitzers, VA	Greenwood
MARTIN, James M.	1846 - 1903	3rd LA Cav.	Forest Park
MARTIN, Benjamin R.	1845 - 1923		Vivian
MATLOCK, Hartwell M.	1842 - 1938	Co. K, Crescent Reg., LA Inf.	Boggs (Bossier)
McCUTCHEN, Samford B.	1834 - 1913	2nd Lt., Co. I, 27th LA Inf.	Greenwood
McDONALD, E. E.		Co. A, 2nd GA	
MILLER, Frank M.		Co. B, 9th Batt., LA	
MILLER, J. J.		Co. A, 6th LA Cav.	
MONCURE, John C.	1827 - 1915	11th LA Inf.	Oakland
MOORE, John N.	?? - 1932	Co. D, 38th TN Inf.	
MOORE, W. C.	1844 - 1921	Co. F, Speight's Reg. LA Art.	Greenwood
MOTT, A. G.	1836 - 1892	Co. A, 1st MS Light Art.	Oakland
NASH, William J.		Corp., Co. G, 11th LA Inf.	
NATTIN, John H.	1840 - 1923	Cpt. Co. D, 6th LA Cav.	Cottage Grove
NEESON, Horace	1836 - 1907	Surgeon, Wright's Brigade, Army N. VA	Lay Cemetery, B. C.
NELSON, John	1835 - 1914	Corp., Co. H, 12th LA Inf.	Greenwood
NEWMAN, Arthur J.	1843 - 1920	Ord. Sgt., Co. B, 19th LA Inf.	Greenwood
NIHILL, Michael	1844 - 1896	Cpt. Nutt's Co., LA Cav.	Oakland
NOLAN, James V.	1844 - 1891	Co. I, 18th LA Inf.	Oakland
NOWELL, Charles C.		Corp., Co. A, 19th LA Inf.	Fillmore (Bossier)
ODUM, John	?? - 1923	Co. G, 12th LA Inf.	
OGILVIE, W. B.	1847 - 1899	Co. A, 6th LA Cav.	Greenwood
OGLETREE, William E.	1848 - 1938		Logansport (DeSoto)
O'LEARY, James F.	1847 - 1932	Co. D, Wood's Reg. Conf. Cav.	Oakland
O'MEALIE, H. M.		Crescent Reg., LA Inf.	
OVERCASH, Jacob S.		Co. I, 23rd AR Inf.	Bethlehem (Bossier)
OWENS, Gideon	1834 - 1903	Co. E, 2nd LA Cav.	Greenwood
PEARCE, John Tim	1842 - ??	1st Lt., Co. F, 62nd AL Inf.	Oakland
PEARSON, Charles H.	1836 - 1921	Co. B, 28th LA Inf.	Forest Park
PENICK, William	1836 - 1907	Capt., Co. G, 53rd VA Inf.	Oakland
PERRIN, Solomon C.		9th KY Inf.	
PERRIN, William C.	1832 - 1903	14th KY Cav.	Greenwood
PETZSCH, Edward	1834 - 1915	Bugler, 6th TX Light Art.	St. Joseph's
PHILLIPS, Lemuel B.	1848 - 1914	Co. A, 11th MO Inf.	Eppes
PLEASANTS, William A.	1842 - 1903	Co. G, 15th TX Inf.	Oakland
REYNOLDS, A. J.	1828 - 1897	Co. E, 31st LA Inf.	Minden (Webster)
RINGGOLD, T. B.	?? - 1920	Blocker's Batt. Art.	
ROACH, Benjamin H.	1843 - 1926	Co. A, 6th LA Inf.	Forest Park
ROACH, William Mc.		Co. C, 16th LA Inf.	St. Joseph's
ROBINSON, W. A.		2nd AR Inf.	
ROBSON, William	1826 - 1900	Capt., Co. A, 25th LA Inf.	Oakland
ROGERS, Hiram	1843 - 1930	Co. I, 2nd KY Cav.	Oakland
RUDDER, Benjamin J.	1845 - 1912	Co. D, 6th LA Cav.	Greenwood
SCOTT, John J.	1837 - 1907	Asst. Surgeon, 16th TX Inf.	Greenwood
SEAY, William A.	1831 - 1888	Asst. Adj. Gen. To Gen. Frost	Oakland
SEEGAR, Milton S.	1848 - 1898	1st Battn. TX Cav.	Greenwood

<u>Veteran's Name</u>	<u>Birth - Death</u>	<u>Company (Unit)</u>	<u>Cemetery</u>
SELLERS, William	?? - 1921	Co. I, 12th LA Inf.	
SEWALL, John A.	1845 - 1930	Co. C, 6th LA Inf.	Greenwood
SIBLEY, Samuel H.	?? - 1911	Cpt. Nutt's Co., LA Cav.	St. Joseph's
SIMMONS, Louis R.		Fenner's LA Battery	Metairie (New Orleans)
SIMPSON, J. S.			
SIMS, Reuben C.	1823 - 1899	1st Lt., Co. K, 25th LA	Oakland
SLIGH, T. S.			St. Louis
SMITH, Joseph B.	1830 - 1889	1st Lt., Co. I, 27th LA Inf.	Oakland
SPRAKE, John		John H. Morgan's Squadron	Oakland
SPEARMAN, James		Co. H, Col. William's Battn., SC Inf.	
STANLEY, Parmenius B.	1842 - 1927	Co. I, 39th AL Inf.	Forest Park
STRUBE, William	1835 - 1921	Co. A, 25th LA Inf.	Oakland
SWAIN, Andrew G.		5th Co., Washington Art., LA	Oakland
SWEENEY, Charles	1841 - 1889	3rd TX Inf.	Oakland
THATCHER, George E.	1831 - 1906	Capt., Art. Ord., Trans-MS	Mansfield (DeSoto)
THOMAS, A. J.		3rd LA Inf.	
THOMAS, John		Crescent Regiment	
THOMPSON, John W.	?? - 1926		
TODD, Alexander S.			
TODD, William Henry	1843 - 1927	Co. B, 2nd MO Cav.	Mt. Lebanon (Bienville)
TREZEVANT, Peter J.	1844 - 1909	2nd SC Cav.	Columbia, SC
TUNNARD, William	1837 - 1916	Sgt., 3rd LA Inf.	Greenwood
UTZ, James F.	1835 - 1895	Capt., 2nd LA Inf.	Greenwood
VANCE, John C.	1843 - 1913	Co. F, 2nd SC Inf.	Minden (Webster)
VARDEMAN, Sam M.	1843 - 1926	Co. K, 53rd GA Inf.	Greenwood
VINSON, Richard T.	1842 - 1904	Washington Art., LA	Oakland
WALKER, Henry C.			
WART, Warren	?? - 1923	Co. I, Burbridge's Reg., MO	Doyline (Webster)
WATSON, H. M.		Co. H, 4th AL Cav.	
WEAKS, B. B.		Co. K, 4th LA Cav.	
WEIL, Nathan	1835 - 1901	Co. K, 11th LA Inf.	Oakland
WELLS, H. P.		Capt., Co. B, 3rd LA Cav.	
WHITE, B. C.		17th VA Inf.	
WHITE, George A.	1846 - 1931	Co. H, 1st TX Heavy Art.	Oakland
WISE, William H.	1841 - 1909	Lt., Richardson's Cav. Battn.	Greenwood
WOLF, J. D.		Orderly Sgt., Pensacola Guards	Hebrew Rest
WOODWARD, George L.	1843 - 1930	Co. A, 6th LA Cav.	Eppes
WORLEY, Alexander S.	1844 - 1944	1st Reg., Butler's SC Inf.	Greenwood
WRIGHT, John			Greenwood ??
YOUNG, John S.	1834 - 1916	2nd Lt., Co. I, 2nd LA Inf.	Oakland
YOUREE, Peter	1843 - 1914	Capt., Slayback's MO Cav.	Scottsville, TX
Other Confederate Veterans mentioned in the Gen. Stafford Camp Minutes:			
BICKHAM, Benjamin H.	1841 - ??	Lt., Co. F, 17th LA Inf.	Greenwood
BOISSEAU, Joseph B.	1829 - 1905	Co. A, 1st LA Inf.	Oakland
BRYAN, George W.	1840 - 1926	Co. G, 3rd LA Cav.	Greenwood
BULLOCK, Thos.	?? - 1924		Forest Park
CAREW, Joseph W.	1847 - 1899		

<u>Veteran's Name</u>	<u>Birth - Death</u>	<u>Company (Unit)</u>	<u>Cemetery</u>
CARUTHERS, George W.	?? - 1919	8th GA	
CHALER, C. B.	?? - 1923	Bird's Battn. LA Cav.	St. Joseph's
CROWDER, William J.		2nd Lt., Co. F, 28th LA Inf. (Thomas)	Oakland
DAVIS, John L.	1837 - 1916	2nd LA Cav.	Greenwood
DEVIVAS, C. A.			
FORTNER, William	?? - 1922	9th TX	Jewella
GELLETTE, Otto Richard	1845 - 1944	Co. K, 2nd MS Inf.	Fillmore (Bossier)
HEARN, G. M.			
HUNT, Wilkins W.	1838 - 1937	1st. Lt., Co. B, 2nd GA Inf.	Greenwood
IRVINE, Thomas P.	1846 - ??	Co. F, 17th TX Inf.	Oakland
LEARY, William P.	1846 - 1930		Greenwood
McCLOUD, Norman			
McDUFFIE, George W.	1832 - 1928	Sgt., Co. A, 6th LA Cav.	Greenwood
MILLER, Benjamin R.	?? - 1922		Forest Park
MORRIS, William E.	1840 - 1912	Co. B & F, 4th LA Inf.	Greenwood
OATES, Dennis	1836 - 1905	Simms Battery, LA Art.	Greenwood
OWLS, William G.		2nd VA Inf.	Greenwood
PARKER, W. H.	1841 - 1914	Co. A, 4th TN Inf.	Greenwood
PRESTRIDGE, Wilson	1841 - 1911	Corporal, Co. K, 17th LA Inf.	Greenwood
PRINCE, L. D.	1836 - 1916	Lt., Co. B, 19th AR Inf.	Oakland
PRUDHOMME, Clark D.	?? - 1925	Co. A, 11th LA Inf.	
RAINEY, James W.	1839 - 1909	4th MO Inf.	Greenwood
RAMBIN, M.		27th LA Inf.	Forest Park
RUTHERFORD, Horace M.	1842 - 1910	Co. C, 16th LA Inf.	Greenwood
SEBASTIAN, W. W.	1840 - 1908	Sgt., Wirt Adam's Cav.	Greenwood
SOUTH, G. B.	?? - 1908	Co. A, 14th TX Inf.	Greenwood
STEPHENSON, A. F.	?? - 1907		Keatchie (DeSoto)
TURNER, George A.	1845 - 1915	5th Co., Washington Art., LA	Oakland
WARD, Samuel J.	1834 - 1906	Col., 8th MO Cav.	Oakland
WARNOCK, J. M.	1845 - 1908	Co. D, 6th LA Cav.	Eppes
WILLIAMS, J. M.	1845 - 1910	39th AL Inf.	Greenwood



### Have You Ever Considered?

You're not stuck in your research – you're ancestrally challenged.

It's 2001, do you know where your great-great grandparents are?

A pack rat is hard to live with – but makes a fine ancestor.

Only a genealogist considers a step backwards as progress.

A family tree can wither if nobody tends its roots.

Genealogy is like playing hide and seek – they hide, I seek.

From the Grand Prairie Genealogical Society *Roots 'n Branches*

## **The Sacred Harp**

**By Darlene Hofer and Danielle Neal**

The Sacred Harp is a method of singing instruction and a venerable song book compiled in 1844 by B. F. White and E. J. King. A cappella singing by syllables, not words, is initially taught, using dispersed harmony where each musical part – treble, alto, tenor and bass – may have its own melody with the parts freely crossing one another. In traditional hymns the three lower parts support the high treble part that alone carries the melody. This tonal singing comes from Elizabethan England and many songs use a 5-toned scale of ancient Celtic origin.

Tonal singing was brought to North America in the 17<sup>th</sup> Century by the Pilgrims, who used four Old English syllables (fa, sol, la and mi) to represent the tones of the scale. You are probably familiar with the “do-re-mi-fa-sol-la-ti-do” octave scale that came from 19<sup>th</sup> century continental Europe. Early colonists were hampered in holding singing schools by the general lack of organized education, but in 1801 two upstate New York music teachers, William Smith and William Little, came up with the unique idea of using shaped notes: a triangle for fa, an oval for sol, a square for la, and a diamond for mi. This enabled teachers to teach music by note, not rote. Hymn books using the shaped notes were known as *harps*, and led to the most famous song book of this type, *The Sacred Harp*. White and King’s original song book was revised in 1902 by W. M. Cooper and again in 1991 by the Sacred Harp Publishing Company.

Traditionally the students sit in a square with the instructor in the center. Men and women tenors in front, men and women trebles at his left, the women altos behind him and the basses at his right. The leader calls the page for the song and sings the opening tones and the entire group joins right in. This singing is said to fill a room with boldness and puts one in mind of bagpipe music.

The migration south and west took this singing method along and singing schools flourished in the south through The Depression and can be found today. An East Texas Sacred Harp Singing Convention has been held annually for 134 years and meets every August in Henderson, TX. Although most participants today are elderly, increasing numbers of young people and children are coming to learn this method of singing. It is said to be a spirited, refreshing experience.

Monthly practice singings are held at Littlevine Primitive Baptist Church in Austin, TX and at First Primitive Baptist Church in Dallas, TX. For recordings and additional information visit [www.rounder.com](http://www.rounder.com), [www.fasola.org](http://www.fasola.org) and [www.mcst.olemis.edu/](http://www.mcst.olemis.edu/) or call 1-800-443-4727.

Sources:

Jackson, George Pullen, *White Spirituals in the Southern Uplands*, 1933.  
*Texas Co-Op Power*, “Power and Glory: The Sacred Harp”, by Randy Mallory, February 2001.

# QUERIES

## HIRT, McGRAW

Seeking information on birth, parents, and siblings of John D. **McGRAW**, born 18 Apr 1853, died 30 Oct 1889, and for his wife, Eva **HIRT**, born 28 Feb 1855, died 10 Jul 1927. Both are buried at Pleasant Grove Cemetery, Ringgold, Bienville, Parish, LA.

Betty Murphy McCabe, 163 Adger, Shreveport, LA 71105-3001

## WINGO

Seeking parents, siblings, and death information on Lorenzo Dow **WINGO** (born 20 May 1831 Decatur Co GA). He is listed on the 1860 Census, Phillips Co AR and 1870 Census, Union Co AR. He married Lydia Ellen **WHITE** of Hempstead Co AR on 14 Sep 1865 and moved to Red River Parish LA after 1879.

Betty Murphy McCabe, 163 Adger, Shreveport, LA 71105-3001

## SWARTZ

Looking for information on Ann Elizabeth **SWARTZ** who married Jun 1871 William Wilkerson **CAMP** in Webster Parish LA and was in Bossier Parish by 1876. They were on the 1880 Census for Ouachita Co AR. He had children from a first marriage; Ann had a small son by a **SWARTZ**.

Carolyn J. Cunningham, 17128 Randall's Ferry Road, Norwood, NC 28128

## JOHNSON

I am trying to contact the relatives of the nine men who died in a plane crash while on a bombing mission in Germany on 31 Mar 1945. The parishioners of St. Lawrence Church in East Anglia have prayed for the souls of these unsung heroes and wish to establish a museum in their honor, with biographical sketches and photos. One of the men is Cpl. Edward F. **JOHNSON**, Arcadia, LA, Serial #33226027, Engineer. [From *The Bienville Democrat*, 7 Dec 2000]

Rear Admiral Edward J. O'Shea, 14 Tabby Point Lane, Okatie, SC 29910

## ADAMS

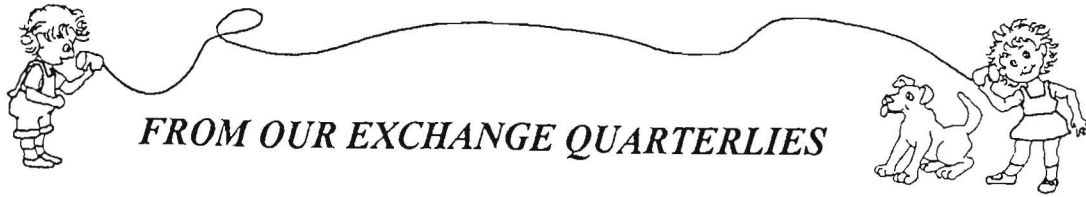
I am looking for an obituary for Sunshine **ADAMS** (her legal name, according to the SSA). She was born 20 Feb 1916 and died in October 1983 with her last known residence in Bossier City, LA. Her husband's name was B. B. **ADAMS**; she may have had a sister, Joy.

Diana Hufstedler, 4405 Windswept Way, Loves Park, IL 61111-4429

## WELCOME NEW MEMBERS

Gloria **McCARTHY BOSLEY**, 600 E. Flournoy Lucas Rd, C-9, Shreveport, LA 71115  
**MULLEN** <glorial@shreve.net>

Mary **KEITH SENTELL**, 1454 Ormandy Drive, Baton Rouge, LA 70808  
**ALLEN** (AR), **GILMER** (Caddo-Bossier & AL or GA), **GRAVES** (NC),  
**KEITH** (Caddo-Bossier-Keithville), **SENTELL** (Caddo-Bossier),  
**SWANN** (Caddo-Bossier & VA)



## FROM OUR EXCHANGE QUARTERLIES

Friends of Genealogy, Inc. exchanges publications with more than 80 other genealogical and historical organizations. These publications provide excellent information, aiding in research in many areas of our country. They are placed in the Genealogy Collection of the Shreve Memorial Library in Shreveport, Louisiana. We are providing information on those wonderful societies and their publications to assist those researchers with ancestors in their areas. We urge you to contact these societies with your research questions and family information. This article began in the Second Quarter, 2000 (Volume XII, No. 2).

### **OK – McCURTAIN COUNTY GENEALOGICAL SOCIETY**

P. O. Box 1832, Idabel, OK 74745-1832

*Intikba* – Quarterly, Dues not stated.

Editor: Wanda Gilbert

Recent Contents: McCurtain Co. Marriages (1913-15), Naming Traditions, Civil War Veteran Honored, The Dillard Girls, Messages from the Grave, Forty Years Under Water, and more.

Queries are accepted. No index.

### **OK – POTEAU VALLEY GENEALOGICAL SOCIETY**

P. O. Box 1031, Poteau, OK 74953-1031

*The LeFlore County Heritage* – Quarterly, \$10.00 year

President: Arlene LeMaster

Recent Contents: Declaration of Independence, LeFlore County Newspaper Articles, New Members and Surnames, Queries, Book Review, and more.

Queries are accepted. No index.

Books & Publications of local interest are listed for sale.

### **SC – SOUTH CAROLINA GENEALOGICAL SOCIETY, DUTCH FORK CHAPTER**

P. O. Box 481, Chapin, SC 29036-0481 <[www.dutchforkchapter.homestead.com](http://www.dutchforkchapter.homestead.com)>

*Dutch Fork Digest* – Quarterly, \$20.00 year <[LKLW1@aol.com](mailto:LKLW1@aol.com)>

Editor: Shirley Trotter

Contains history of the Dutch Fork area in SC, family histories, Bible records, land and deed abstracts, cemetery records and surveys, early church records, census, and other genealogical documentations.

Recent Contents: Abstract of Lexington Co. Plats, Whence Came Pomaria, Richland Co. Equity Petitions, Memorandum on Graveyards, 1869 Lexington Co. State Census, 1869 Newberry Co. State Census, Jacob Rikard and his Gristmill, Old Obituaries, Plats Newberry Court Common Pleas, Deed Book 4-I Lexington Co, and more.

Queries are accepted. No index.



**SC – SOUTH CAROLINA GENEALOGICAL SOCIETY, OLD DARLINGTON DISTRICT CHAPTER**

P. O. Box 175, Hartsville, SC 29551-0175

<[www.geocities.com/Heartland/Estates/7212](http://www.geocities.com/Heartland/Estates/7212)>

***The Darlington Flag*** – Quarterly, \$20.00 year

Editor: John L. Andrews, Jr. <[Jandr45985@aol.com](mailto:Jandr45985@aol.com)>

Contains previously unpublished primary genealogical documents from Old Darlington District, SC, book reviews, area genealogical information, and queries.

Recent Contents: Benjamin Evans Inventory (1775), Estate of William McCall Inventory (1859), Minutes of the Court of General Sessions (1807), Knott-Clements Cemetery, Morris Family Migration, Darlington County Magistrates Court Arrest Warrants, Petition from Robert Blair, Tory, Marion Star Items of Interest, Queries, and others.

Queries are accepted from members only. No index.

The society operates the Hartsville Genealogical Research Library and has a large collection of South Carolina and Southern genealogical records. They have over 100 publications for sale.

**SD - ABERDEEN AREA GENEALOGICAL SOCIETY**

P. O. Box 493, Aberdeen, SD 57402-0493 <[gedcom@nvc.net](mailto:gedcom@nvc.net)>

***The Tree Climber*** – Quarterly, \$12.00 year

Editor: Ron Bolduan, <[rbolduan@dtgnet.com](mailto:rbolduan@dtgnet.com)>

Contains short biographies of local residents, local historical events, queries, research materials available, etc.

Recent Contents: Conservation of Family Heirlooms; Look Backward to 1899; Minutes of Meetings, Queries, Publications for Sale.

Local obituaries for many years are being computerized.

Queries can be submitted by anyone (\$5.00 for non-members); No Index.

Books & Publications of local interest are listed for sale.

**TN – THE HARDIN COUNTY HISTORICAL SOCIETY**

P. O. Box 1012, Savannah, TN 38372-1012

***Hardin County Historian*** – Annual, \$20.00 year.

Editor: Ronney R. Brewington

Recent Contents: UDC Shiloh Chapter 371 – The First 100 Years, Young Family of Hardin County, Welch Families, Hardin County Court Records, and more.

Queries are accepted. Surname index.

Editor's Note: This organization will no longer exchange publications after 2000.

**TN – MARION COUNTY GENEALOGICAL GROUP**

6611 Old Dunlap Road, Whitwell, TN 37397-6311

***The Searcher*** – Quarterly, \$12.00 year.

Editor: Euline Harris <[h62833@aol.com](mailto:h62833@aol.com)>

Contain Bible records, wills, family histories, census records, queries, etc.

Recent Contents: Gertz Hanging Article, 1850 Marion County census, James C. Condra Family, Queries, and more.

Queries are accepted. No index.

The Society maintains a genealogical library at the Whitwell Public Library.

### **TN – UPPER CUMBERLAND GENEALOGICAL ASSOCIATION**

P. O. Box 575, Cookeville, TN 38503-0575

*The Upper Cumberland Researcher* – Quarterly, \$12.00 year

Editor: Fred Clark <clark@blomand.net>

Contains wills, cemeteries, tax lists, Bible records, voting lists, church records, family histories, and queries. Counties of interest include Macon, Clay, Pickett, Smith, Jackson, Overton, Fentress, Putnam, DeKalb, White, Cumberland, Cannon, Warren, and Van Buren.

Recent Contents: Descendants of Thomas Ensor, James L. Lynns Will, The Three Commandments of Research, Successful Links, Queries, and more.

Queries are accepted from members only. Full-Name Index.

Books & Publications of local interest are listed for sale.

### **TX – GRAND PRAIRIE GENEALOGICAL SOCIETY**

P. O. Box 532026, Grand Prairie, TX 75053-2026

*Roots 'N Branches* – Monthly, \$15.00 year.

Newsletter contains member and society news and tidbits from the Grand Prairie Texan (1909).

### **TX – HARRIS COUNTY GENEALOGICAL SOCIETY**

P. O. Box 391, Pasadena, TX 77501-0391 <www.myweb.net/~de/HCGSAP.html>

*The Living Tree News* – Quarterly, \$15.00 year. <leburns@hal-pc.org>

Recent Contents: Polk County Texas Voters' Registration (1867), Rusk County Confederate List, How to Search Cemetery Records, Definitions of Diseases, Pension and/or Bounty Land Records, and more.

Queries accepted from anyone. Full-Name Index.

### **TX – HOOD COUNTY GENEALOGICAL SOCIETY**

P. O. Box 1623, Granbury, TX 76048-8623 <www.GranburyDepot.org>

*Hood County Genealogical Society* – Quarterly, \$10.00 year.

<ancestor@GranburyDepot.org>

Editor: Roy Malone <remtx@hcnews.com>

Contains sketches of pioneer settlers of Hood county, cemetery readings, newspaper extracts, vital records, marriages, queries, book reviews, etc.

Recent Contents: Remember the Crocketts, Probate-Delayed Births of Hood County, Hood County Death Records, The Granbury News, Hood County Heritage Program, and more.

Queries are accepted from anyone. No Index.

### **TX – THE HUMBLE AREA GENEALOGICAL SOCIETY**

P. O. Box 2723, Humble, TX 77347-2723

*The Humble Genealogist* – Quarterly, \$10.00 year.

Editor: Margie Bates Nelson

Recent Contents: Society News, Humble Historical Tidbits, New Books, 2000 Membership List with Surnames, and more.

Queries free to members, \$1.00 to non-members. No Index.

P. O. Box 400, Centerville, TX 75833-0400

***The Leon Hunters Dispatch*** – Quarterly, \$15.00 year.

Editor: Edna Fae Bain Boutotte

Recent Contents: Obits and More Leon County News, 1868 Voters in Leon County, My Early Life by Helen Collins Pate, 1870 Leon County Census, and more.

Queries are accepted. Surname Index.

Books & Publications of local interest are listed for sale.

#### **TX – NACOGDOCHES GENEALOGICAL SOCIETY**

Box 4634 SFA Station, Nacogdoches, TX 75962-4634 <[www.webnac.com/Nacgs/](http://www.webnac.com/Nacgs/)>

***Yesterdays*** – Semi-Annual, \$15.00 year.

Editor: Carolyn Reeves Ericson <[info@ericsonbooks.com](mailto:info@ericsonbooks.com)>

Contains Bible records, cemetery records, tax lists, etc. pertaining to Nacogdoches County, TX.

Recent Contents: Descendants of Marcus D. LaFayette Sharpe, Alabamians in East Texas, Christian Family, Reuben (Shelby) Hamilton Notes, Forehand Bible Records, List of Early Settlers in Shelby County, Descendants of Samuel Oxsheer, Descendants of Tom Leonard, Descendants of George Washington Warren, and more.

Queries are accepted from anyone. Full-Name Index.

#### **TX – PARKER COUNTY GENEALOGICAL SOCIETY**

P. O. Box 201, Weatherford, TX 76086-0201

***Trails West*** – Quarterly, \$10.00 year.

Editor: Bell Wise <[wise@prodigy.net](mailto:wise@prodigy.net)>

Contains Bible records, pedigree charts, family group sheets, family stories, wills from Parker Co., early Parker County marriages, etc.

Recent Contents: Company K Fifth Regiment, Descendants of James Blalock, Coors Pedigree Chart, Parker County Marriage Records, Peters' Bible, and more.

Queries are accepted from anyone. Surname Index.

Books & Publications of local interest are listed for sale.

#### **TX – RED RIVER COUNTY TEXAS GENEALOGICAL SOCIETY**

P. O. Box 516, Clarksville, TX 75426-0516

***Red River County Texas Genealogical Society Quarterly*** – Quarterly, \$15.00 year.

Editor: Sharon Black

Recent Contents: New Books, Cemetery Addresses, Old News from the Standard Newspaper, McKenzie College Roll of Students, and more.

Queries are accepted. Surname Index.

Books & Publications of local interest are listed for sale.

*To be continued ....*



*You will find in Genealogy . . . . spelling is not an exact science.*

*Shirley White*

# *Book Reviews*

**FRIENDS OF GENEALOGY, INC.** welcomes donations of books, publications, and other genealogical materials for review in our quarterly, *THE JOURNAL*. Donated materials are placed in the Genealogy Collection at the Shreve Memorial Library in Shreveport, Louisiana, one of the largest and most visited genealogical research libraries in the South.

## **DESCENDANTS OF JOHN ADCOCK – EARLY 1700s**

By Ammy Stephens Van Hooser      Softcover, 66 pages, Table of Contents      \$5.00  
postpaid

The ADCOCK family and their relatives went through many difficulties in their travel from Virginia to Mississippi. The trip by covered wagon was dangerous, along with such hardships as sickness and death, which included burying loved ones by the side of the road. Many of the people served their country in time of war down through the years – both in the military and religious ministry. Most of the information is from sources such as family members, cemetery records, and library records.

Order from: Stephens Printing, 106 Townsend Drive, Florence, MS 39073

## **SENECA SEARCHERS**

Quarterly Publication of Seneca Co. Genealogical Society – Membership \$12.00 year  
Seneca County is located between Columbus and Toledo, Ohio. This issue contains information on Civil War Discharge Records, Census of Union Veterans and Widows (1890), Cleaning Gravestones, A Day at Possum Hill School in 1842, How Many Relatives Do You Have?, Sources for locating genealogical information in your home, Membership Update, and Queries.

Contact the Society at P. O. Box 157, Tiffin, OH 44883-0157

## **THE ROSENE-SYMONS SAGA – A Blending of French, English, and Swedish Heritages**

By Kathryn BARKLEY FISCHER      Hardbound, 204 pages, Full index      \$18.50  
postpaid

A family history that merges the English families SYMONS, HEATH, ROOKE, WILLS, PHILLIPS, MABEN; French Huguenots RODIER and LEGASSICKE; and Swedish families ROSENE, CARLSSON (KARLSSON), TENGBLAD, STRALENHIELM, HOLMES, OLSEN, and DANIELSSON compiled by country of origin. Surname chapters include brief histories and personal accounts. There are numerous lineage charts, photographs, and maps. An added bonus is the compiler's explanation of Swedish patronymic naming customs.

Order from: Kathryn B. FISCHER, 70 Hyacinth Drive, Covington, LA 70433

The following three books may be ordered from:  
Turner Publishing Company, P. O. Box 3101, Paducah, KY 42001

**WEAKLEY COUNTY, TN – HISTORY AND FAMILIES**

By Virginia Vaughan and The Weakley County Genealogical Society  
Hardbound, 384 pages, Surname Index \$52.50  
postpaid

This volume was published in honor of the 175th anniversary of Weakley County and was a two-year project. This county is located on the plateau slope of northwest TN. The book contains the history of the county, military history, industries, businesses, agriculture, schools, and articles on the towns and communities. There are many photographs and family histories. It is a treasury of information and memories.

**HUNTINGTON COUNTY, INDIANA – HISTORY AND FAMILIES (1834-1993)**

Compiled by The Huntington County Historical Society  
Hardbound, 442 pages, Full-name index \$62.50  
postpaid

The purpose of this book is to include every family that has ever lived in Huntington County long enough to provide their family's history without cost or obligation to the family. The book includes articles on schools, clubs, organizations, churches, industries, and businesses. Several people provided invaluable assistance by writing various historical articles. Surnames include: ANDREW, BLAIR, CAMPBELL, DAVIS, ERVIN, FOX, GOOD, HARTLEY, KENNEDY, MILLER, PAUL, PINKERTON, RICHARDSON, SHULTZ, SMITH, THOMAS, WOLF, and ZEIGLER.

**SCOTT COUNTY, KY – FAMILIES AND HISTORY**

By Dr. J. Robert Snyder Hardbound, 280 pages, Surname index \$52.50  
postpaid

This book contains articles on towns and communities, schools, civic clubs, businesses, churches, and includes a special section on war veterans. Interspersed throughout are pictures relating to each time period. It is hoped that this book will give a sense of the rich heritage of Scott County and that readers will learn a little of what was happening during the lifetimes of their ancestors.



**1810 U.S. FEDERAL CENSUS INDEX**

Heritage Quest CD-ROM \$39.95

This CD-ROM is an index of the heads of household for the United States in 1810. This census index includes the sixteen states of Connecticut, Delaware, Kentucky, Louisiana, Massachusetts, Maryland, Maine, North Carolina, New Hampshire, New York, Pennsylvania, Rhode Island, South Carolina, Tennessee, Virginia, and Vermont, with a total of 826,349 entries. Information details surname, given name, state, county, and locality, along with the film number and page reference; these can be searched individually or in groups you specify [example: Surname - Smith, State - VA, County - Fauquier]. Generations® Archives Viewer Software, required to view this CD-ROM, is included free.

Order from: Heritage Quest at 800-760-2455 or <[www.HeritageQuest.com](http://www.HeritageQuest.com)>

### **GROW A FAMILY TREE!**

By William Dollarhide      Softcover, 184 pages, subject index      \$24.95

This new Heritage Quest book outlines seven easy steps for discovering your family roots: Do Your Homework, Start Family Sheets, Locate More Relatives, Get the Vital Records, Search the Census Records, Survey the Local and State Records, and Survey the National Resources. Mr. Dollarhide uses humor and know-how of the latest technologies in this easy to follow basic training manual, making genealogy fun and easy for the entire family. It also includes a free CD-ROM of the entire text so users can print the text, tables, and forms.

Order from: Heritage Quest at 800-760-2455 or <[www.HeritageQuest.com](http://www.HeritageQuest.com)>

### **ROOS AF HJELMSATER – A SWEDISH NOBLE FAMILY WITH ALLIED FAMILIES AND EMIGRANTS**

By Lillie ROLLINS CRAWFORD and Robert Junius CRAWFORD

Hardbound      626 pages, full-name index      \$40.00 postpaid

This volume seeks to document the ROOS AF HJELMSATER clan, one of the oldest and most prestigious noble families of Sweden. The genealogical story spans a time period from the Middle Ages to the end of the 20th Century and is made up of several segments, each one different, but dovetailed well with other portions of the book. There is a useful list of translations of Swedish words and expressions, a pedigree chart going back to the founder of the family [Jon Raud IVARSSON], and an ancestral table. There are 90 photographs of family members and a color plate of the family coat-of-arms which is on display in the House of Nobles in Stockholm.

Order from: Donald ROOS JOHNSON, 1969 Fields Pond Drive, Marietta, GA 30068



The following two books may be ordered from:

Central New York Gen. Society, P. O. Box 104, Colvin Station, Syracuse, NY 13205

### **TREE TALKS (Quarterly, December 1996)**

Central New York Gen. Society      Softbound, 78 pages, full-name index      \$20 year

This issue is titled *Tioga County – Abstract of the 1825 New York State Census*. The information came from the microfilm of the original census made by the LDS Church. The enumeration was done as of 1 July 1825. Tioga County was formed from Montgomery County on 16 Feb 1791 and later sections of it went to other counties. Some surnames: ANDREWS, BARDSLEY, CLARK, ELLIS, FROST, HART, HOWEL, KNAPP, LEWIS, MEAD, PARK, REED, SHOEMAKER, TAYLOR, VANDERMARK, WOODFORD, and YATES.

### **TREE TALKS (Quarterly) – COUNTY OF STEUBEN ABSTRACTS**

Central New York Gen. Society      Softbound, 110 pages, no index      \$15.00 postpaid

This issue contains abstracts from Steuben County, NY gathered from surrogate's court, county clerks office, church, cemetery, and newspaper records. Three of the four issues printed each year contain abstracts of a particular county. CNYGS has expanded since its formation in 1964 and now includes 49 of the 62 counties of New York State. They have produced over 200 publications in their forty years of genealogical research.

# SURNAME INDEX

(A surname may appear more than once on a page.)

<p>                     ABRAMS, 23                      ACHEE, 21                      ADAIR, 22                      ADAM, 35                      ADAMS, 30, 37                      ADCOCK, 42                      ADGER, 9, 24                      AILES, 30                      ALEXANDER, 16, 22, 23,                          26, 30                      ALISON, 14, 24                      ALLEN, 2, 8, 9, 23, 29,                          30, 37                      AMHURST, 10                      ANDERSON, 13                      ANDREW, 43                      ANDREWS, 39, 44                      ARDIS, 25                      ARMISTEAD, 25                      ARNOLD, 30                      AUSTIN, 30                      AVERS, 15                        BAER, 15                      BAGLEY, 22                      BAILEY, 30                      BAIN, 41                      BAINS, 30                      BAIRD, 25                      BAKER, 23                      BALL, 16, 30                      BALLARD, 29                      BANCROFT, 24                      BARDSLEY, 44                      BARKER, 30                      BARKLEY, 28, 42                      BARMORE, 23                      BARNARD, 23                      BARNS, 9                      BARROW, 22                      BARTLETT, 30                      BATES, 40                      BAUDOIN, 27                      BAUMGARDNER, 30                      BAYLISS, 22                      BAZER, 30                      BEALE, 23                      BEARLEY, 25                      BEASON, 26                      BEATTIE, 13                      BECKWITH, 30                      BELCHER, 30                      BELL, 16, 23, 30                      BENEFIELD, 9                      BENNETT, 9, 16                      BERRY, 15                      BEVANS, 30                      BICKHAM, 34                      BIGGER, 30                      BILLINGSLEY, 30                      BIRD, 35                      BLACK, 41                      BLACKMAN, 24                      BLACKWELL, 13                      BLAIR, 39, 43                      BLALOCK, 41                      BLANCHARD, 8                      BLEWER, 30                      BLOXOM, 23                      BOAZMAN, 8                      BOCKSTRUCK, 2, 3, 4                      BOISSEAU, 34                 </p>	<p>                     BOLDUAN, 39                      BOLLING, 30                      BOLLIVER, 14                      BONNEGENT, 16                      BONNER, 16                      BOOTY, 30                      BOSLEY, 22, 37                      BOUNDS, 24                      BOURQUIN, 30                      BOUTOTTE, 41                      BOYER, 22                      BRAZIL, 24                      BRES, 23                      BREWINGTON, 39                      BREWSTER, 22                      BROCK, 15                      BROGDON, 23                      BROOK, 15                      BROOKS, 14, 32                      BROWN, 15, 22, 25, 30                      BRUMBACH, 16                      BRUMBLE, 23                      BRUNER, 30                      BRUNSON, 27, 28, 29                      BRYAN, 34                      BRYANT, 22                      BUCKLEW, 30                      BUCKNER, 14                      BUFKIN, 24, 25                      BUGG, 6                      BUGGS, 25                      BULLOCK, 24, 34                      BURBRIDGE, 34                      BURGESS, 23                      BURLEIGH, 15                      BURTON, 9, 22                      BUSBEY, 22, 25                      BUSH, 24, 25                      BUTLER, 15, 22, 34                      BYRD, 22                        CABELL, 33                      CAGE, 24                      CAIN, 30                      CALDWELL, 30                      CALHOUN, 23                      CALLOWAY, 30                      CALVERT, 30                      CAMP, 37                      CAMPBELL, 43                      CAREW, 34                      CARLETON, 25                      CARLSSON, 42                      CARLTON, 25                      CARR, 14                      CARUTHERS, 35                      CASTLE, 31                      CATES, 15                      CATLIFLE, 13                      CHALER, 35                      CHAMBERS, 8                      CHASE, 31                      CHELETTE, 31                      CHRISTIAN, 41                      CLARK, 16, 40, 44                      CLARKE, 15                      CLAWSON, 25                      CLAY, 31                      CLEAVER, 31                      CLEMENS, 25                      CLEMONS, 16                      CLINE, 13                 </p>	<p>                     COCKRAN, 25                      COLE, 16                      COLLINS, 10, 41                      COLQUITT, 31                      COLSTON, 9                      COLVIN, 23                      CONDRA, 39                      CONNOR, 13                      COOK, 24                      COOKE, 12, 13                      COOPER, 36                      CORBETT, 31                      CORDARO, 24                      CORLEY, 25                      CORNES, 31                      CORRICE, 24                      COSGROVE, 31                      COSTLEY, 24                      COX, 31                      CRAIN, 12, 13, 24                      CRAWFORD, 22, 31, 44                      CRENSHAW, 23                      CREWS, 31                      CROCKETT, 40                      CROOK, 22                      CROWDER, 25, 35                      CROXSON, 24                      CRUMPTON, 13                      CUNNINGHAM, 37                      CUNNINGHAM, 28                      CURRIE, 8, 23                      CUTLIDGE, 14                        DANIEL, 31                      DANIELS, 14, 23, 25                      DANIELSSON, 42                      DAVIDSON, 25, 29                      DAVIS, 10, 31, 35, 43                      DAVISON, 27                      DAWES, 16                      DEAL, 27                      DEEN, 22                      DELAY, 25                      DELMAR, 25                      DENNIS, 31                      DENSON, 30, 31                      DEVIVAS, 35                      DEWING, 31                      DEXTER, 25                      DICKERSON, 24                      DINGLE, 31                      DIXON, 6                      DOLFF, 15                      DOLLARHIDE, 3, 44                      DORMAN, 25                      DORTCH, 22                      DOUGLASS, 13                      DOWNEY, 23                      DOWNING, 14                      DRAKE, 23                      DUFFY, 3                      DURHAM, 24                      DYER, 22, 23, 24                        EGAN, 31                      ELLET, 31                      ELLICKSON, 15                      ELLIS, 24, 44                      ENDERS, 25, 31                      ENOS, 14                      ENSOR, 40                      ERICSON, 41                 </p>
---------------------------------------------------------------------------------------------------------------------------------------------------------------------------------------------------------------------------------------------------------------------------------------------------------------------------------------------------------------------------------------------------------------------------------------------------------------------------------------------------------------------------------------------------------------------------------------------------------------------------------------------------------------------------------------------------------------------------------------------------------------------------------------------------------------------------------------------------------------------------------------------------------------------------------------------------------------------------------------------------------------------------------------------------------------------------------------------------------------------------------------------------------------------------------------------------------------------------------------------------------------------------------------------------------------------------------------------------------------------------------------------------------------------------------------------------------------------------------------------------------------------------------------------------------------------------------------------------------------------------------------------------------------------------------------------------------------------------------------------------------------------------------------------------------------------------------------------------------------------------------------------------------------------------------------------------------------------------------------------------------------------------------------------------------------------------------------------------------------------------------------------------------------------------------------------------------------------------------------------------------------------------------------------------------------------------------------------------------------------------------------------------------------------------------------------------------------------------------------------------------------------------------------------------------------------------------------------------------------------------------------------------------------------------------------------------------------------------------------------------------------------------------	----------------------------------------------------------------------------------------------------------------------------------------------------------------------------------------------------------------------------------------------------------------------------------------------------------------------------------------------------------------------------------------------------------------------------------------------------------------------------------------------------------------------------------------------------------------------------------------------------------------------------------------------------------------------------------------------------------------------------------------------------------------------------------------------------------------------------------------------------------------------------------------------------------------------------------------------------------------------------------------------------------------------------------------------------------------------------------------------------------------------------------------------------------------------------------------------------------------------------------------------------------------------------------------------------------------------------------------------------------------------------------------------------------------------------------------------------------------------------------------------------------------------------------------------------------------------------------------------------------------------------------------------------------------------------------------------------------------------------------------------------------------------------------------------------------------------------------------------------------------------------------------------------------------------------------------------------------------------------------------------------------------------------------------------------------------------------------------------------------------------------------------------------------------------------------------------------------------------------------------------------------------------------------------------------------------------------------------------------------------------------------------------------------------------------------------------------------------------------------------------------------------------------------------------------------------------------------------------------------------------------------------------------------------------------------------------------------------------------------------------------------------------------------	-----------------------------------------------------------------------------------------------------------------------------------------------------------------------------------------------------------------------------------------------------------------------------------------------------------------------------------------------------------------------------------------------------------------------------------------------------------------------------------------------------------------------------------------------------------------------------------------------------------------------------------------------------------------------------------------------------------------------------------------------------------------------------------------------------------------------------------------------------------------------------------------------------------------------------------------------------------------------------------------------------------------------------------------------------------------------------------------------------------------------------------------------------------------------------------------------------------------------------------------------------------------------------------------------------------------------------------------------------------------------------------------------------------------------------------------------------------------------------------------------------------------------------------------------------------------------------------------------------------------------------------------------------------------------------------------------------------------------------------------------------------------------------------------------------------------------------------------------------------------------------------------------------------------------------------------------------------------------------------------------------------------------------------------------------------------------------------------------------------------------------------------------------------------------------------------------------------------------------------------------------------------------------------------------------------------------------------------------------------------------------------------------------------------------------------------------------------------------------------------------------------------------------------------------------------------------------------------------------------------------------------------------------------------------------------------------------------------------------------------------------------

## SURNAME INDEX

ERVIN, 43  
 ESTES, 15, 16  
 EVANS, 28, 29, 31, 39  
 EVART, 16  
  
 FARMER, 27  
 FARNELL, 22, 25  
 FARRAR, 23  
 FATAR, 15  
 FENKLEY, 15  
 FENNER, 34  
 FERGUSON, 22, 24, 25  
 FERRY, 31  
 FISCHER, 42  
 FISH, 31  
 FLEENER, 25  
 FLETCHER, 23  
 FLORESTINE, 10  
 FLOURNOY, 31  
 FORD, 14, 31  
 FORTNER, 35  
 FORTSON, 31  
 FOUTS, 23  
 FOX, 43  
 FRAME, 22  
 FRANKS, 24  
 FREEMAN, 24  
 FRENCH, 24  
 FRESHOUR, 16  
 FREY, 23  
 FRIEND, 25  
 FROST, 33, 44  
 FRUAR, 23  
 FRYE, 27  
 FULCO, 24  
 FUNDERBURK, 31  
 FURR, 26  
  
 GAHAGAN, 23  
 GALL, 31  
 GAMBLIN, 31  
 GAMMILL, 23  
 GARDNER, 24  
 GATES, 12  
 GAUTIER, 31  
 GAYLE, 24  
 GEIGER, 15  
 GELLETTE, 35  
 GEORGE, 14, 25, 26  
 GIBBS, 23  
 GIBSON, 23  
 GILBERT, 38  
 GILL, 27, 31  
 GILLESPIE, 23, 31  
 GILLIAM, 16  
 GILLILAND, 31  
 GILMER, 37  
 GILMORE, 24, 31  
 GLANNEN, 25  
 GLASSELL, 24  
 GOFF, 15  
 GOLDEN, 29  
 GOOCH, 12, 13  
 GOOD, 43  
 GOODE, 32  
 GORDON, 16  
 GOTHIER, 31  
 GOULD, 24  
 GRAVES, 37  
 GRAY, 23, 31  
 GREEN, 13, 23, 25  
 GREGG, 31  
 GREGORY, 25  
 GRIFFIN, 16, 24, 31  
  
 GRIFFITH, 24  
 GRIM, 31  
 GRISWOLD, 12  
 GROSJEAN, 31  
 GRYDER, 31  
 GUIN, 24  
 GUINN, 23  
 GUSTINE, 31  
 GUTHRIE, 29  
 GUTTING, 25  
  
 HACKETT, 31  
 HADDAD, 24  
 HALL, 14  
 HALLETH, 14  
 HAMILTON, 23, 31, 41  
 HAMPTON, 16  
 HANKS, 23  
 HANSEN, 23  
 HANSON, 25  
 HARGROVE, 31  
 HARMON, 29  
 HARPER, 8, 22  
 HARRINGTON, 23  
 HARRIS, 39  
 HARRISON, 26, 27, 31  
 HART, 23, 44  
 HARTLEY, 43  
 HARVEY, 32  
 HAUGHTON, 32  
 HAYES, 23  
 HAYMAN, 15  
 HAYNE, 24  
 HAYNIE, 24  
 HAYS, 23, 24, 28  
 HEAD, 2, 3, 32  
 HEARN, 35  
 HEATH, 42  
 HEINBACK, 27  
 HEINE, 12, 32  
 HENDRICK, 25  
 HENRY, 8  
 HERRING, 13  
 HICKS, 8  
 HILBORN, 25  
 HILBURN, 23  
 HILL, 24, 28, 29, 32  
 HILLEY, 32  
 HINKLE, 32  
 HIRT, 37  
 HITCHCOCK, 13, 14  
 HJELMSATER, 44  
 HODGE, 12, 13  
 HOFER, 36  
 HOFMAKEN, 16  
 HOLCOMBE, 32  
 HOLLAND, 23, 32  
 HOLLENSHEAD, 22  
 HOLLIS, 32  
 HOLMES, 23, 32, 42  
 HOME, 24  
 HORAN, 32  
 HORN, 15  
 HORTON, 32  
 HOUGH, 32  
 HOWARD, 23  
 HOWELL, 13, 24, 44  
 HOWERTON, 14  
 HUDSON, 23  
 HUETT, 22  
 HUFSTEDLER, 37  
 HUGHES, 32  
 HUKIZER, 25  
 HUNIECHER, 13  
  
 HUNSICKER, 12  
 HUNT, 35  
 HUNTER, 32  
 HUTTON, 32  
 HYAMS, 32  
  
 INGERSOLL, 25  
 IRVINE, 35  
 IRWIN, 15  
 IVARSSON, 44  
 IVEY, 24  
  
 JACKSON, 7, 23, 25, 36  
 JACOBS, 23, 32  
 JEFFERSON, 7  
 JEFFRIES, 32  
 JENKINS, 23  
 JOHNSON, 7, 8, 13, 23,  
 24, 32, 37, 44  
 JOHNSTON, 22  
 JONES, 7, 10, 22, 23, 32  
 JORDAN, 22, 26, 32  
 JULIAN, 23  
  
 KARLSSON, 42  
 KEITH, 24, 37  
 KELLY, 13, 24  
 KEMP, 25  
 KENDALL, 32  
 KENNEDY, 23, 43  
 KERLEY, 12, 14  
 KETCHEM, 28  
 KEYSER, 32  
 KING, 13, 23, 24, 32, 36  
 KINNEY, 32  
 KISER, 22  
 KLINE, 32  
 KNAPP, 44  
  
 LACY, 32  
 LAFITTE, 32  
 LAING, 23  
 LAKE, 32  
 LANCASTER, 23  
 LAND, 13  
 LANDRUM, 14  
 LANE, 27  
 LANGFIELD, 14  
 LASSITER, 32  
 LAUGHLIN, 32  
 LAVELLE, 27  
 LAWSON, 25  
 LAWTON, 29  
 LAY, 25  
 LEARY, 35  
 LEE, 7, 16, 22  
 LEGASSICKE, 42  
 LeMASTER, 38  
 LEMONINE, 16  
 LEONARD, 14, 32, 41  
 LEVY, 25, 32  
 LEWIS, 13, 14, 16, 44  
 LINDSAY, 32  
 LITTLE, 36  
 LOGAN, 14  
 LOVING, 32  
 LOWE, 29  
 LUCAR, 32  
 LUCH, 33  
 LUKE, 8  
 LYMAN, 22  
 LYNN, 40  
 LYONS, 24



## SURNAME INDEX

MABEN, 42  
MABRY, 33  
MACATEE, 15  
MACKS, 15  
MAGNON, 24  
MAHER, 22  
MALLORY, 36  
MALON, 40  
MALSCH, 25  
MANIGAN, 12  
MANLEY, 24  
MAPPS, 25  
MARCH, 33  
MARION, 7  
MARSDEN, 33  
MARSTON, 25  
MARTE, 16  
MARTIN, 23, 33  
MARYE, 12, 13  
MARYMAN, 25  
MASON, 6, 22  
MATHEWS, 24  
MATLOCK, 33  
MATTHEWS, 15  
MAURY, 14  
MAXWELL, 25  
McCABE, 37  
McCALL, 39  
McCARTHY, 37  
McCARTY, 25  
McCLOUD, 35  
McCLUNEY, 26  
McCONNELL, 15  
McCRUDER, 14  
McCUTCHEEN, 33  
McDADE, 25  
McDONALD, 4, 8, 33  
McDUFFIE, 35  
McFALL, 14  
McFERIN, 25  
McGEE, 27  
McGRAW, 37  
McLEMORE, 24  
McLURE, 12  
McNEIL, 10  
McWHINEY, 4  
MEAD, 44  
MEIER, 26  
MERCER, 25  
MEREDITH, 23  
MERRITT, 29  
MILLER, 8, 23, 33, 35, 43  
MITCHELL, 13  
MONCURE, 33  
MOONING, 24  
MOORE, 13, 16, 24, 27, 28, 33  
MOREHAM, 8  
MORELAND, 27  
MORGAN, 22, 32, 34  
MORRIS, 15, 16, 35, 39  
MOSS, 8  
MOTT, 15, 33  
MULCARE, 25  
MULHUSEN, 23  
MULLEN, 37  
MUNERLYN, 25  
MURPHY, 22  
  
NAFF, 24  
NASH, 33  
NATTIN, 25, 33  
NEAL, 10, 36  
  
NEESON, 33  
NEILD, 24  
NELSON, 27, 29, 33, 40  
NEUBERGER, 14  
NEWMAN, 8, 33  
NIHILL, 33  
NOLAN, 33  
NORTON, 23, 24  
NOTT, 25  
NOWELL, 33  
NUTT, 30, 31, 32, 33, 34  
  
OATES, 35  
ODOM, 25  
ODUM, 33  
OGILVIE, 33  
OGLETREE, 33  
OLSEN, 42  
OSBORNE, 22  
OSBURN, 24  
OSTEEN, 24  
OVERCASH, 33  
OWENS, 33  
OWLS, 35  
OXSHEER, 41  
O'LEARY, 33  
O'MEALIE, 33  
O'PRY, 12  
O'SHEA, 37  
  
PALMER, 25  
PARK, 44  
PARKER, 23, 24, 25, 27, 35  
PASTIEN, 15  
PATE, 41  
PATTERSON, 14  
PAUL, 43  
PAXTON, 9  
PEARCE, 33  
PEARSON, 33  
PEEVY, 24  
PENICK, 33  
PENNINGTON, 22  
PENY, 24  
PERRIN, 33  
PETERS, 24, 41  
PETERSON, 10  
PETTEWAY, 25  
PETZSCH, 33  
PHANEUF, 23  
PHILLIPS, 23, 33, 42  
PICARD, 25  
PICHOT, 15  
PINDALL, 32  
PINKERTON, 43  
PLAND, 8  
PLANTS, 28  
PLAYER, 8  
PLEASANTS, 33  
FLOWMAN, 22  
POOLE, 23  
POPE, 24  
POPPET, 15  
POUNCEY, 15  
PRESTRIDGE, 35  
PRHEM, 15  
PRICHARD, 23  
PRICHETT, 24  
PRINCE, 15, 35  
PRUDENT, 31  
PRUDHOMME, 35  
RABURN, 25  
  
RAGSDALE, 24  
RAINEY, 35  
RAMBIN, 35  
RATCLIFF, 22  
RATLIFFE, 14  
RAY, 23, 25  
REED, 44  
REEVE, 23  
REEVES, 41  
RENCY, 16  
RENFROW, 24  
REPP, 25  
REXACH, 23  
REYNOLDS, 33  
RICHARDSON, 34, 43  
RICOU, 23  
RIDDICK, 23  
RIDER, 24  
RINGGOLD, 33  
RISHER, 15  
RIST, 16  
ROACH, 33  
ROBERTSON, 29  
ROBESON, 14  
ROBINSON, 13, 25, 33  
ROBSON, 33  
RODEFELD, 23  
RODIER, 42  
ROGERS, 33  
ROLLINS, 44  
ROOKE, 42  
ROSENBAUM, 15  
ROSENE, 42  
ROTH, 29  
ROUSE, 16  
RUDELL, 15  
RUDDER, 33  
RUDDLE, 12  
RUSSELL, 25  
RUTHERFORD, 35  
RYDER, 15  
  
SALE, 14  
SAUNDERS, 29  
SAWYER, 15  
SCHELLING, 25  
SCHUMAKER, 24  
SCOTT, 15, 23, 24, 28, 29, 33  
SCOTTNELSON, 28  
SEAMAN, 22  
SEAY, 33  
SEBASTIAN, 22, 24, 35  
SEEGAR, 33  
SEEMES, 31  
SELLERS, 34  
SENTELL, 37  
SEWALL, 14, 34  
SEYBERT, 24  
SHADOVENS, 22  
SHARPE, 41  
SHEFFIELD, 22  
SHELTON, 25  
SHEPHERD, 23  
SHOEMAKER, 44  
SHREVE, 10  
SHULTZ, 43  
SIBLEY, 14, 34  
SIMMONS, 34  
SIMMS, 35  
SIMPSON, 24, 34  
SIMS, 14, 26, 34  
SIPE, 25  
SISH, 23

## SURNAME INDEX

SLATTERY, 30  
 SLAUGHTER, 13  
 SLAYBACK, 34  
 SLIGH, 34  
 SMALLWOOD, 13  
 SMITH, 14, 23, 34, 36, 43  
 SNELL, 25  
 SNYDER, 43  
 SOUTH, 35  
 SPANIER, 15  
 SPEARMAN, 34  
 SPEIGHT, 33  
 SPENCE, 25  
 SPRAKE, 34  
 ST AGIUE, 23  
 STAFFORD, 30  
 STANLEY, 34  
 STEARNES, 16  
 STEARNS, 25  
 STEET, 25  
 STEGER, 3  
 STEPHENS, 42  
 STEPHENSON, 35  
 STEVENS, 16, 22  
 STEWART, 23, 24  
 STEWMAN, 9  
 STINSON, 28  
 STRALENHIELM, 42  
 STRUBE, 34  
 SUANDERS, 29  
 SUTHERLAND, 23  
 SWAIN, 34  
 SWANN, 37  
 SWARTZ, 37  
 SWEENEY, 34  
 SWOR, 23  
 SYMONS, 42  
  
 TACHE, 14  
 TALLEY, 32  
 TANGMAR, 28  
 TAYLOR, 15, 16, 44  
 TEER, 29  
 TENGBLAD, 42  
 TERWILLIGH, 22  
 THATCHER, 34  
 THEMEDY, 23  
 THOMAS, 8, 9, 23, 34, 35, 43  
 THOMPSON, 23  
 THOMPSON, 22, 34  
 THROMOND, 24  
 TILLMAN, 23  
 TODD, 24, 34  
 TOOKE, 24  
 TOWNSEND, 24  
 TREZEVANT, 34  
 TRISCOUI, 23  
 TRISHELL, 23  
 TROTTER, 38  
 TUCKER, 25  
 TUMINELLO, 25  
 TUNNARD, 34  
 TURNER, 16, 35  
 UTZ, 34  
  
 VANCE, 34  
 VANDERMARK, 44  
 VANDUSON, 24  
 VAN HOOSER, 42  
 VanHORN, 13  
 VARDEMAN, 34  
  
 VAUGHAN, 23, 43  
 VINSON, 25, 34  
  
 WAGGONER, 18, 19, 20  
 WALCOTT, 27  
 WALDEN, 21  
 WALDRON, 12  
 WALKDEN, 19  
 WALKER, 18, 19, 20, 22, 24, 34  
 WALLACE, 18  
 WALLER, 13, 18, 19, 20  
 WALLIS, 20  
 WALTER, 20  
 WALTERS, 13, 22  
 WALTHER, 19, 20  
 WALTON, 21  
 WARD, 18, 19, 20, 21, 24, 25, 35  
 WARE, 18  
 WARNER, 18, 23  
 WARNOCK, 35  
 WARREN, 18, 41  
 WART, 34  
 WASHINGTON, 18, 19, 20, 21  
 WASHINTON, 21  
 WATERS, 19, 20  
 WATKINS, 18  
 WATSON, 16, 18, 20, 34  
 WATTIS, 18  
 WEAKS, 34  
 WEATHERTON, 18, 19, 20  
 WEAVER, 19, 20  
 WEBB, 18, 19, 20  
 WEBSTER, 18, 19  
 WEIL, 34  
 WEINSBECK, 16  
 WELCH, 24, 39  
 WELLBORN, 24  
 WELLS, 18, 34  
 WELSH, 23, 25  
 WESLEY, 7, 18, 19, 21  
 WESSON, 18, 19  
 WEST, 18, 19, 21  
 WESTON, 20  
 WHEATLY, 19, 20  
 WHEELER, 19, 20, 21  
 WHEELIS, 19, 20  
 WHITAKER, 29  
 WHITE, 14, 18, 19, 20, 21, 22, 25, 34, 36, 37, 41  
 WHITEHEAD, 18, 19  
 WHITNEY, 20  
 WIGGINS, 8  
 WILBURN, 19, 20  
 WILCOX, 23  
 WILDING, 25  
 WILEY, 19, 20, 21  
 WILKERSON, 18, 19, 21  
 WILKINS, 18, 19, 20  
 WILLIAM, 34  
 WILLIAMS, 18, 19, 20, 35  
 WILLIAMSON, 19, 20  
 WILLKINS, 18, 19  
 WILLOUGHBY, 18, 19  
 WILLS, 17, 18, 19, 22, 42  
 WILMOUTH, 21  
 WILSON, 18, 19, 20, 23  
 WIMBERLY, 20  
 WINGHARD, 20  
  
 WINGO, 37  
 WINTER, 16  
 WISE, 18, 19, 20, 34, 41  
 WISEMAN, 15  
 WISTON, 19, 20  
 WIZE, 21  
 WOLF, 34, 43  
 WOOD, 14, 19, 20, 33  
 WOODARD, 18, 19, 20, 25  
 WOODFORD, 44  
 WOODS, 8, 9  
 WOODWARD, 34  
 WOOLDRIDGE, 16  
 WOOTEN, 22  
 WORLEY, 19, 20, 34  
 WORSHAM, 18, 19  
 WORTHAM, 18, 19  
 WORTHINGTON, 24  
 WRAY, 25  
 WRENN, 19, 20  
 WRIGHT, 24, 33, 34  
 WYATT, 19, 20, 21  
  
 YARBROUGH, 25  
 YATES, 21, 44  
 YOUNG, 21, 24, 34, 39  
 YOUNGBLOOD, 21  
 YOUREE, 34  
  
 ZEIGLER, 43  
 ZIMMERMAN,

# FRIENDS OF GENEALOGY, INC.

## BOARD OF DIRECTORS 2001 - 2002

President	John C. Head	318-929-1730	jw-enterprises@worldnet.att.net
First Vice-President	Laura Hair Duffy	318-424-7648	lhduffy1@msn.com
Second Vice-President	Belinda L. Harville Pierce	318-688-5497	bebear@nwla.com
Secretary	Florence Palmer Herring	318-688-5353	fherring@shreve.net
Treasurer	Janine Johnson Dunlap	318-925-6271	dunlap@shreve.net
Historian	Darlene Jackson Hofer	903-687-3596	ehofer@internetwork.net
Editor	Danielle Harrison Neal	318-938-7310	dneal@querbes-nelson.com
Trustee (2001)	Jimmie Jean Pate Bowman	318-686-2559	
Trustee (2001)	Kenna Armentrout Dossett	318-686-5786	KennaD3869@aol.com
Trustee (2002)	Jane Leslie Newberry	318-687-1652	ejln@ark-la-tex.com
Trustee (2002)	Janie Kottler Binderim	318-687-0357	JBINDE@LSUMC.edu
Past President	Charles W. Sedam	318-686-4322	BeaBeaC@aol.com

## COMMITTEES -- List not complete

Telephone Frances Twilley Hawkins 318-688-1407

*Need another person*

Hospitality

*Need at least two people*

Publicity	Laura Hair Duffy	318-424-7648	lhduffy1@msn.com
Parliamentarian	Charles W. Sedam	318-686-4322	BeaBeaC@aol.com
Seminar Chairman	Wanda Volentine Head	318-929-1730	jw-enterprises@worldnet.att.net
Sunshine & Memorials	Rachael McIntyre Mangum	318-925-9334	
Quarterly Exchanges	Juanita Abrahamson Racine	318-686-8360	
Surname File	Frances Twilley Hawkins	318-688-1407	
Cemetery Chairman	Benjamin Achee	318-746-3688	bachee@shreve.net
Microfilm	Jane Leslie Newberry	318-687-1652	ejln@ark-la-tex.com
Book Donations	Janine Johnson Dunlap	318-925-6271	dunlap@shreve.net
Book Reviews			
Supplies	Belinda L. Harville Pierce	318-688-5497	bebear@nwla.com

*THE ONLY ROSE WITHOUT A THORN IS FRIENDSHIP*

FRIENDS OF GENEALOGY, INC.  
P. O. BOX 17835  
SHREVEPORT, LA 71138-0835

NON-PROFIT ORGANIZATION  
U S POSTAGE PAID  
SHREVEPORT, LA  
PERMIT NO. 934

ADDRESS SERVICE REQUESTED