

Non-Profit Org.
U. S. Postage
PAID
Shreveport, LA
Permit #562



VOLUME 32

FIRST QUARTER 1998

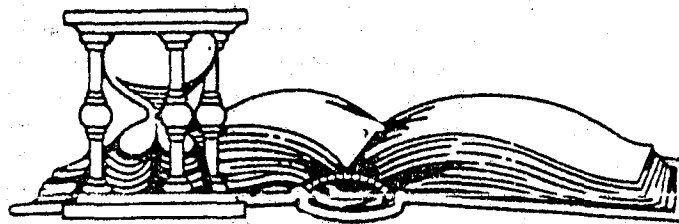
NUMBER 1

PUBLISHED QUARTERLY BY
ARK-LA-TEX GENEALOGICAL ASSOCIATION, INC.

P.O. BOX 4462
SHREVEPORT, LOUISIANA 71134

TABLE OF CONTENTS

REMINISCENCES OF AN EARLIER ERA OF COMMERCE STREET AREA	1
MEMBERSHIP LIST-FIRST QUARTER 1998	7
PEDIGREE CHART-EDWARD RAY HUMPHREYS	14
THE ARNOLD FAMILY OF BOSSIER PARISH (COUNTY) LOUISIANA	15
ALTGA COMMITTEES	20
GREEN GROVE MISSIONARY BAPTIST CHURCH CEMETERY, BONITA, LOUISIANA	21
MAIDEN NAME SOURCES	22
JOHANN JORG FEAZEL	23
MARY ANN WISE & MICHAEL FEAZEL	24
WILHELMINIA ANN CORNELIA FEAZEL & JOHN EDMAN THOMAS	26
JOHN SMITH CARLTON & SALETTA SCARBOROUGH	28
ANCESTOR CHART-JULIA LEE DOUGLAS	30
MOORE-COBB AHNENTAFEL	31
BOOK REVIEWS	32
QUERIES	33
WORLD WAR I DISCHARGE PAPERS, UNION PARISH, LOUISIANA	37
OBITUARY	49
ANCESTOR CHART-CAROLE ELAINE NEAL	50



THE GENIE is published quarterly. Each member receives four issues for each year of membership. All material published in THE GENIE is compiled and contributed by the members. THE GENIE exchanges periodicals with other genealogical-historical organizations publishing data of general interest. We regret that we cannot exchange with limited family organizations, but invite them to send samples of their publications for brief review, since many of these family organizations are of great value in information on the family covered by them.

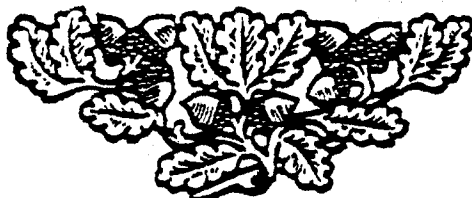
All members of the staff of THE GENIE are volunteers:

PRINTING.....	James & Patsy Oliphant
TYPING & COMPUTER INDEXING.....	Ethel E. Krause
BROCHURES FOR SEMINARS, ETC.....	Chris Oliver
QUERIES.....	Isabelle Woods
BOOK REVIEWS.....	Herman Weiland
LABELS.....	Michael Broussard
BULK MAILING.....	Carl & Pat Hallgren
COLLATING.....	Pat Hallgren, Lillian Hope, Ethel Krause, Ed Krause, Julia Douglas, Herman & Veretta Weiland, Reed Mathews, Constance Whatley

* * * * *

BOARD OF DIRECTORS 1998

Reed C. Mathews	868-0036	President
Betty Jon Gorman	868-2807	First Vice President
Nellygrace C. Stoll	746-0383	Second Vice President
Constance Whatley	861-4336	Recording Secretary
Chris Oliver	636-5669	Corresponding Secretary
Ethel E. Krause	746-3125	Treasurer-Editor
Dale Jennings	965-9342	Trustee
Allan Barlow, Jr.	861-9765	Trustee
Roy L. Henderson	861-7449	Trustee
Willie R. Griffin	631-6031	Trustee
Victor C. Rose	687-3673	Past President



The ARK-LA-TEX GENEALOGICAL ASSOCIATION, Inc., is a non-profit, non-sectarian, non-political, educational organization dedicated solely to the cause of genealogy, which includes the following purposes: to collect, preserve and make available genealogical materials, documents and records; to encourage an interest in genealogy and to sponsor educational programs for its development; to promote and publicize the City of Shreveport, Louisiana, as a major genealogical research center for genealogists and historians; to cooperate with and assist all other genealogical, historical, patriotic societies in the furtherance of these purposes; to compile and publish a quarterly composed of records and data related to the Science of Genealogy.

REGULAR MEETING: Second Saturday of each month, 1 P.M. to 4 P.M. at the Randle T. Moore Senior Citizen Center, 3101 Fairfield Ave., Shreveport, LA, with the exception of the second Saturday in August when the annual seminar is held. Time and place announced later.

MEMBERSHIP DUES: 1 Jan to 31 Dec-Individual \$12.50, married couple \$15.00. All members to receive four issues of THE GENIE, which is published quarterly.

BOOK REVIEWS: Reviews of books of genealogical interest will be published in THE GENIE as donated by publisher or author. These books are then made available to the public through the Genealogy Department of Shreve Memorial Library, as is all other genealogical material of the Ark-La-Tex Genealogical Assn.

QUERIES ARE FREE: They must not be over 70 words and must be typed or plainly printed.

This publication is indexed in the PERiodical Source Index published by the Allen County Public Library Foundation, Ft. Wayne, IN.

ARK-LA-TEX GENEALOGICAL ASSOCIATION IS NOW ON THE INTERNET! Webb address is www.softdisk.com/comp/aga. e-mail aga@softdisk.com.

* * * * *

PRESIDENT'S PAGE

Dear Members and Friends :

1997 was a great year for the Ark-La-Tex Genealogical Association. We continue to take pride in our publication, The Genie. The programs have been wonderfully educational and entertaining. We broke a record for attendance at our annual seminar in August. With the proceeds from this seminar, we made a donation to the Shreve Memorial Library of more than \$1100 worth of new books and research materials, this fall. Our research trip to the Clayton Library in Houston, TX was a rich and rewarding experience. Chris Stoll did a wonderful job, as usual, in making arrangements for the trip. Thanks, Chris!

The programs deserve note, especially. Carroll Goyne's talk on the Melungeons summarized years of the most fascinating research. (That program alone was worth the \$12.50 yearly dues.) Dr. Thurmond's lecture on medical family histories showed the importance of tracing inherited health problems. Willie Griffin told the story of his African-American research, and Allan Barlow spoke on his rich Scottish heritage. Mike Broussard discussed his family's Acadian odyssey and Thad Pardue told of the different world he had found in the archeological pits of Jamestown, VA. Charles Steger entertained us with the strange and wonderful grave markers that he has found over the years. Mike Broussard announced at our show and tell meeting that he and his wife, Ginny, were expecting their second child, and word came for our November meeting that Richard and Winona Newhouser had added a daughter, Amelia, to their family tree.

The Association lost two of its dearest members in 1997. In June, our past president, Charlie Pratt passed away. Charlie was my definition of a gentleman and a friend. His service to this group was a great gift. Trenkins McClain died on Christmas Day. Trenkins served on the board for many years and for the past several years chaired our education committee. A born teacher, she communicated not only her rich expertise in research techniques, but also her deep love for family history. We miss them both.

It looks as if 1998 will be another good year for the Association. We miss Herman and Veretta Weiland on the board, whose terms as trustees have expired. We welcome Willie Griffin and Roy Henderson, who have been elected to the trustee positions. Constance Whatley has been elected to fill the vacancy of Recording Secretary. I am very happy to have Victor Rose rejoin the board to fill the past president slot.

There is more good news. Plans are being made for a group research trip to Salt Lake City for this November. The special rates are open to anyone. (You do not have to be a member of the Association to participate.) Deadline for reservations is August 1998. Contact Chris Stoll at "I Love Travel", 318-747-4770 for details. We would love to have you join us!

And the best news of all: Marguerite Loftin announced at the February meeting that the speaker for the 1998 August seminar will be Dr. George Schweitzer. I am very excited that we were able to get the most popular genealogical speaker in the country for our seminar! Stay tuned for details.

Sincerely,

Reed C. Mathews

Reed C. Mathews

President Ark-La-Tex Genealogical Assoc.



Mrs. Trenkins McClain

MINDEN, LA - Services for Mrs. Trenkins McClain, 73, will be held at 2 p.m., Sunday, Dec. 28, 1997 at Minden Rose-Neath Chapel. Officiating will be Rev. Bill Ichter. Burial will be in Gardens of Memory in Minden.

Visitation will be Sat. from 9 a.m. to 10 p.m. and Sun. 8 a.m. to service time.

Mrs. McClain died Thursday, December 25, 1997 in Shreveport. She was born in El Dorado, Ark. and had resided in Minden for 27 years. Mrs. McClain was a homemaker and a member of the United Daughters of the Confederacy. She was also a genealogy instructor and was very active in Ark-La-Tex Genealogical Association.

Survivors include her husband, J.L. McClain of Minden, La.; son, Russell Lee McClain of Elizabeth City, N.C.; daughter, Trenkins Irene McClain of San Francisco, Calif.; brother, Melvin Russell of Atlanta, Ga. and two grandchildren.

**Rose-Neath Funeral Home
Minden Chapel, 377-3412**

JULIE M. FORD

Gretna, LA

(A note from Julie's mother, Sandi Meisler, that Julie, her husband and all three of their sons died in a house fire on October 9, 1997.)

* * * * *

REMINISCENCES OF AN EARLIER ERA OF THE COMMERCE STREET AREA
Shreveport, Louisiana



MRS. LUCILE HENDRICK

Hendrick honored with birthday celebration

Historic Beau Fort Plantation adorned with festive Christmas decorations furnished the perfect setting for a birthday celebration honoring Lucile Hendrick given by members of her Sunday school class.

The occasion was planned as a surprise for the former teacher, who taught and inspired the class for 35 years.

Mrs. Ann Brittain, owner of the home, helped plan the surprise and joined the 34 members present in singing "Happy Birthday" to Mrs. Hendrick.

A luncheon was enjoyed by the group, after which birthday gifts were opened and a tour of the home was given by the honoree, who is the official tour guide for the plantation home.

Visitors enjoying this special time with class members were the Rev. and Mrs. Doug Cain, pastor of First United Methodist Church; the Rev. and Mrs. James Poole, associate pastor, and Lou Ropp, who accompanied her mother, Effie Lee Ropp.

(Mrs. Hendrick, shown in picture, turned 88 at this birthday. She was the last Dean of Women at Northwestern State University at Natchitoches, Louisiana in 1974. At present she is the official tour guide for Beau Fort Plantation located below Natchitoches, LA. If you would like to visit with her and take a tour, she is present from 1 P.M. to 4 P.M. Monday thru Thursday and same times on Saturday and Sunday. Any groups wanting to visit can make reservations at other times. She is a delightful lady and her article on "Old Shreveport" is a treasure. We owe our thanks to ALTGA member, Mrs. Fred Coday, Jr., for obtaining this article.)

I am Mrs. A. O. Hendrick, Jr., (Lucile Mertz) of Natchitoches, Louisiana,

formerly of Shreveport, where I attended the public schools.

I was born January 4, 1909, in Mexia, Texas, the daughter of Guy Winfred Mertz (born in Burnettsville, Indiana) and Lavonia Burt (born in Mexia, Texas). We moved to Shreveport in 1916, and lived at 930 Commerce Street, the last house next to the toll bridge crossing Red River to Bossier. My parents are buried in the Greenwood Cemetery in Shreveport.

The toll keeper of the bridge was Colonel Roach, whether authentic title or just one of respect, I do not remember, however, he was a very interesting person and a wonderful story teller, as he liked to talk about the early history of Shreveport and the Civil War. Sometimes in the afternoons, my mother would permit me to go over to his little office, even collect the toll amount, and listen to him, which was always a "highlight".

One of the fascinating events of the bridge was when it had to open in the middle for barges and boats to go under, if their masts were too tall for the closed bridge. Everyone in the neighborhood would come to watch the excitement, as the barge or boat would have a bell ringing or a horn sounding.

The house in which we lived (we rented an apartment) was most interesting, as it was quite old and had been an inn during the steamboat "hey-dey"! era. There were steps leading up to rooms and to other apartments. The house was owned by Mr. and Mrs. Joseph W. Langston, who are listed in the 1900 Shreveport Census. Mr. Langston was foreman for the Cotton Belt Railroad, and an exciting event for youngsters was to go to the Roundhouse and see the mighty engines turn around.

Some other occupants of the house were Mr. Oscar Brewster and Mr. and Mrs. T. R. Phillips of 645 Gladstone Boulevard (present address in Shreveport). Mr. Phillips was Mrs. Langston's nephew.

The yard to the house was surrounded by a tall wooden fence with heavy double wooden gates that remained ajar and the ground was a courtyard of rocks and stones. Flower beds were next to the fence and in the spring, nasturtium^o flourished there and on Saturday evenings, my mother, Mrs. Langston (whom we lovingly called "Aunt Jo" and her husband was "Uncle Joe"), and Mary, the maid, picked the flowers, tied them in bundles, placed them in two large arm baskets, and I walked from Commerce to Texas Avenue to the Charity Hospital to give the bouquets to the Staff for the patients.

On one occasion, I was stopped by a passerby with a request to buy the flowers, and my response was in the negative. Later, I told my father about the offer and he shook his head in disbelief that I would refuse to sell some of them.

Our backyard faced the backyard of the Wilson athletes, "Fats", J. W., Roy, etc., and late in the summer afternoons, the youngsters of the neighborhood would gather to cook soup in the Wilson's backyard with everyone bringing the various ingredients needed for the soup-we must have consumed gallons of the half-done mixture, saying it was good.

In the corner of our backyard was the cabin where Mary lived with her two children, and I loved being there with them, as the cabin was always redolent with various odors emanating from the black iron pots on the hearth of the fireplace, but my "specialty" was really the cornbread pones that she cooked there. The paper on the walls was another attraction, for they were comic papers and I loved sitting there looking at Mutt and Jeff, Andy and

Min Gump and the Katzenjammer Kids, and I could never understand why we couldn't have papered walls like that in our house.

Our neighborhood was quite memorable-next to us was Mrs. Rachal with sons, John and Launcie-then there was a rented cottage- and then at 912 Commerce Street was the ancestral home of Miss Pearl and Miss Ruth Martin, which was beautifully furnished with fabulous furniture that had been brought by steamboat from New Orleans-their father had been a cotton broker. They were ladies of the "Ole South" in their thinking, habits and traditions. For example, a lady never crossed her ankles and her feet were firmly placed on the floor. They were well-educated and versed in Shreveport history and lore, which I loved to hear.

I accompanied them with my two little brothers on Sunday mornings, as we walked to town to attend services at the Presbyterian Church at the corner of Travis and Edwards Streets. They always carried black taffeta parasols with ruffles, and they gave me a white one of which I was so very proud, and I tried to imitate them in carrying mine-I was guilty at times of twirling it, which was a "No, no," with them.

In their house was a large collection of bird eggs in nests, which was placed in little niches bearing notes of information, all of which was covered with glass. This was one of their special treasures, as it had belonged to their father, who had made the collection. The parlor had many items in various designs of Sevres china vases, Bristol glass, and bisque figurines, which captivated the onlooker.

However, what really made the Martin house historically important was that the back of the dwelling was high off the ground and had been the stable for their horses and surrey. During the Civil War when General Kirby Smith and his men were in the Bossier and Shreveport area, General Smith and some of his officers quartered their horses there and carved their names and initials in the upright posts and beams. I was told that when the house was destroyed that there were some Shreveporters who secured some of the initialed wooden pieces.

On the corner of Commerce and Lake Streets, across the Martin residence, was a couple named Gray and they had a pair of grey horses and a grey surrey, and UHUH! they dressed in grey dusters when they went riding. Across the street from the Gray's home on the corner was the black wrought iron fence encircling the yard of the Currie family and the large _____ the yard featured black iron statues of deer and dogs.

Next to this house facing Lake Street, where the TIMES office is, was the W. F. Taylor mansion, which was an interesting edifice. Around the corner on Market Street was the Gordon home with the elegant cut glass, which always sparkled in the sunlight. Also, there was a Levy located in the area.

On Spring Street, to the side of the Currie home, was a very large house belonging to the Vordenbaumen family, consisting of the parents, two sons (George and Edward), and a daughter, Wilhelmina, familiarly known as "Mena", who is the wife of T. R. Phillips, mentioned earlier.

On Market Street lived Mr. and Mrs. Mose Frank (he later became head of Frank Wholesale Grocery Co.) and she was a beautiful lady. On several afternoons during the summer months, she would invite some of the young girls in the neighborhood to her home to teach them lessons from the Old Testament.

I still have a brass pin tray of the Woolworth Building that she gave me for learning the books of the Old Testament. Mr. Frank was a relative of the Ehrlich brothers, who were involved, later, in the Strand Theater. The Ehrlich brothers lived in a small white cottage in the downtown area where Frank Fulco's Printing Shop is now located.

Across from the Vordenbaumen home on Spring Street were two very old historical houses dating back prior to the Civil War and many interesting stories were related about the houses—one was in 1935 when Shreveport was having a Confederate Reunion, there appeared at one of the houses (the one with the huge white columns) three elderly men, who introduced themselves as veterans and that they had left a sword hidden in the house behind the mantel. They requested permission to see if the saber was still there—permission was granted—one of the men reached behind and seconds later, he pulled forth the item that had been hidden all those years.

The Spring Street viaduct was there, as now, over the railroad tracks. At the end of the bridge, cornered on Spring and facing Crockett Street was the W. F. Taylor Wholesale Company. Further down on Spring Street was the Lindsay Printing Co., the Liddell Candy Co., flanked by several other businesses. We were all familiar with many of the owners and workers, for we all walked to school, as there was no transportation for us.

We attended Travis Street School located directly behind the present Shreve Memorial Library. The building was old, "musty" smelling of two floors, and completely surrounded by concrete grounds. We played "Jacks", "Hop-Scotch", "Jump Rope" etc. In the mornings we lived up and marched in to the sound of music played on the piano—"Stars and Stripes Forever", "National Emblem March", etc., and every morning in the class room we sang "America" and recited the "Pledge of Allegiance" to the Flag". Children of many of the older families attended this school. Miss Rachel Goldberg was the principal and all grades and studies were recorded in numerical figures, such as: Arithmetic, Spelling, 100, etc. I have several of those report cards. Every prize was a highlight as Miss Cora Lee Henry, the art teacher visited in our classroom, a very pretty lady, who was to become Mrs. D. H. Perkins and lovingly known as the "Purple Lady", who had a fondness for the ___ as well as the "Ole Normal", where she had graduated as she was a native of Natchitoches and later became renowned for her interest in history.

Travis Street School was right in the heart of town with large homes and mansions in the area—Mrs. Samuel Bailey Hicks was across the street from the Dreyfuss home—the Victorian house of the Doll family, Ellerbe, Schofield, Basch, etc.

In the block of Texas Street behind the school were businesses including the Post Office (Shreve Memorial now)—the Grand Opera House located on the corner of Texas and Edwards, where I saw Irene and Vernon Castle dance, Galli Curci sing, John Barrymore in "Hamlet"—Marilyn Miller known as "Miss Twinkle Toes" dance, etc.

There was an open area by the Opera House that led to the balcony in the building and students could sit there for five cents a ticket. Next was Zodiag's, a woman's department store, that was considered quite chic in its day. Next was Phelps, the famous shoe store, that featured a Santa Claus in the window during the Christmas season, who would give a gift out of his bag to the person buying a new pair of shoes—unfortunately, I never needed a new pair at Christmas. Before school began in the fall, my parents bought me two new pair of shoes, one for school (high top, lace up) and

black patent slippers for Sunday.

Across the street facing these businesses were the Hippodrome Theater, Winters' Department Store, later became the location for Rubenstein's (before they moved to Milam Street). Hirsh and Leman was the bookstore, and I still have many books bearing their trademark. M. Levy's Mens Store was on the corner of Edwards and Texas Street across from the Opera House.

In the next block on Texas Street across from the Court House was a drug store on the corner, the Hutchinson building that housed Gordon Jewelers and a Music Shop, and then there was Olympia Shreveport's place of "Drooling"-mirrored walls, large crystal jars topped with cut glass stoppers filled with colorful, mouth-watering candy confections of every imaginable type, and then an array of chocolate delectables that were made in the back of the store. There were the usual round tables and chairs with black iron backs and legs, where many hours were spent in consuming the various tempting concoctions-banana splits, ice cream sodas, angels' delights, etc.

My father was in the cement, masonry and plastering business with Colin F. Dyer, and their office was located on the second floor of the Ward Building, and I sat there many hours in the window watching and looking at that area of Shreveport, and then sadly saw the departure of the old red court-house building for the new modern one. One of the traditions of the old courthouse was the hot tamale vendor selling his succulent wares for ten cents a dozen-and there was always a gathering on Saturday afternoons to purchase the tamales.

On the corner of Marshall and Milan Streets (where M. Levy is located now) was a very large Victorian house with gingerbread scrolls and curved windows-this was Mrs. Mitchell's Millinery Shop and she made custom designed "chapeaux" for her clients and she was very successful.

On Milam Street, where Rubenstein's is now, was the Capitol Theater and in the next block, where Selber's is closed, was the Majestic Building, housing the drug store, the theater, the library, and places of business on the second floor. Shreveport did not have a public library during those years. The one on the second floor of the Majestic Building was called the People's Library and an annual charge of \$3.50 was required for membership. This was where I was introduced to the BOBBSEY TWINS, ELSIE DINSMORE, LITTLE COLONEL SERIES, ANNE OF GREEN GABLES, etc. The membership fee for me was always a Christmas present from Mrs. Langston.

Across the street from the Majestic Building was Dreyfuss, a woman's department store, which was a favorite shopping center for many people. On that same side of the street in the block was the Saenger Theater, which was a very popular place-we went every Saturday afternoon for a long time to see Pearl White in "The Perils of Pauline" for five cents a ticket.

When we were ready for the sixth grade, Travis Street School was condemned, so we were transferred to other areas-for low 6th, we were sent to Alledale School, and that is where I met Mrs. Easterwood, an aunt to the Peyton family connection-and for high 6th, we attended Alexander School, and Miss Dingle was the principal.

Then in the summer of 1921, my family moved to Queensborough, there was such a regret to leave the Commerce Street section and I attended Queensborough School for the 7th grade and for our 8th grade, we were now ready for Hope Street High School with its two buildings and for Mr. Kaufman and

Mr. Albertson. Here we continued and then in the fall, 1925, C.E. Byrd High School was opened and never had there been a school like this before-tributes, accolades, and acknowledgments for the building, but it was located so far out and away from the city. There was only one house on Jefferson Street and that was the residence of Mr. and Mrs. J. C. Shepherd, Sr. The site for the school had been purchased from Mrs. Shepherd's parents, who had maintained a dairy there for years.

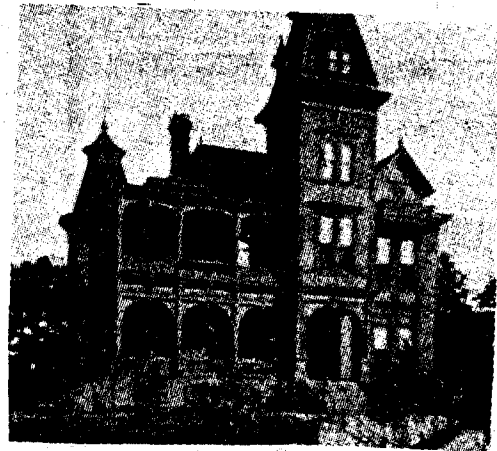
The ones of us from the Queensborough area rode sometimes in cars to school (not ours) but most of the time, we rode the street car to downtown and transferred to the "hinky-dink", the Union Depot Belt Street car. which shivered, shook, jumped the track at times, but eventually arrived at Jefferson Street to let us off, and then turned around and headed back to town.

Then in May 1926, the momentous day arrived, the first graduation from Byrd High School, and the exercises were held at the Fair Ground's Coliseum with Mayor L. F. Thomas as the speaker. This was truly a memorable event for Shreveport to have such a large graduating class and many honors and tributes were presented to various members.

Our activities in those "growing-up days" included dances at the Washington-Youree Hotel (in the Crystal Ballroom and on the rooftop garden), in the homes, canoeing on the Bayou Pierre, which was a favorite gathering place in the evenings, swimming at the Natatorium and at Rosehill, outdoor movies and concerts at the various parks, and, particularly Princess Park, attending church parties and events. We listened and danced to the music of many bands (some were Shreveport young men's groups) and others were "name-bands", occasionally.

(Note: The date of this article is unknown, but since it has been written many more changes have been made in Shreveport and many of the businesses said to be in the present have also been closed. Ed)

* * * * *



MEMBERSHIP LIST-FIRST QUARTER 1998

NEW:

ATKINS, Clarence Edwin-7327 Arrow Wood Rd., Ozawkie, KS 66070-4000.
 ATKINS, ADKINS (GA, AL, LA, TX, AR)
 BURNLEY, Barbara A.-2625 Lyles Lane, Shreveport, LA 71118-2623.
 CULVER, WRIGHT, COLEMAN, JENKINS
 CHATHAM, Douglas Malloy-2827 Janet St., Lithia Springs, GA 30122-1221.
 CHATHAM (LA, TX, AR, OK)
 HATCHER, Sarah-3867 Elmer Ln., Shreveport, LA 71109-2040.
 BAKER, HARRIS, SCHELEMI, CRAMER
 McNEILL, Jeanine-2145 Old Piedmont Rd., San Jose, CA 95132-1339.
 BOTZONG, HAMMETT, CRAIG
 MORRIS, Glenn Harland-RR #1, Box 1055, Watts, OK 74964-9750
 LEWIS, RATTI, HILL
 PEDERSEN, Gertrude Mae-13303 E. Mission Ave., #259, Spokane, WA 99216.
 FREEMAN, ROBINSON, PARKER

*Indicates African-American members

AINSWORTH, Fern-130 Boyd, Natchitoches, LA 71457-3906. (Life Member)
 GUNTER, HODGE, BARNHILL, WESTPHALL/WESTFALL
 ALEXANDER, Carolyn Sue-P O Box 911, Livingston, TX 77351-0911.
 TERRY, WIGGINS, PALMER
 ALLEN COUNTY PUBLIC LIBRARY-P O Box 2270, Ft. Wayne, IN 46801-2270.
 ALLSTOTT, Doris H.-5687 Jefferson-Paige Rd., Shreveport, LA 71119-5401.
 WILLIFORD, WEBB, COSTON, WILEY
 BARNETT, Mrs. Norman-Box 96, Smiley, TX 78159-0096.
 PATTERSON, CLUTTER, START
 BEREL, Patricia-10251 Pheasant Trail, Keithville, LA 71047-8919.
 LEWING, EASON, DUPREE, OXLEY
 BORGER, Deborah-2426 Loyanne, Spring, TX 77373-6270.
 BROWN, MARTIN
 BRADFORD, Mildred-1959 Bayou Dr., Shreveport, LA 71105-3405.
 FIELDER, HOLMES, VINES, TRAMMELL
 BRADLEY, Roberta-9912 Pilot Point, Fort Worth, TX 76108.
 COPELAND, SMITH, RUSHING, WATTS
 BRASHER, Samuel-6079 Metro Dr., Keithville, LA 71047-9583.
 COBB, HARRISON
 BRENNAN, Charlene-P O Box 2691, Rancho Cucamonga, CA 91729-2691.
 FUTRELL, NICHOLS, GRIFFIN, STUCKEY
 BRIDGES, Mary Frances Duncan-529 Oriole Ln., Shreveport, LA 71105-4307.
 TURNER, VAWTER, WALTHALL, WILSON
 BROUSSARD, Michael E.-645 Wilkinson St., Shreveport, LA 71104-3131.
 PREJEAN, DELHOMME, BOSSIER, BOURGEOIS
 BURKE, Mari-221 Woodside Lane, Montgomery, TX 77356-8270.
 MCKEE, GREEN, GORMAN
 CINCINNATI PUBLIC LIBRARY-800 Vine St., Cincinnati, OH 45202-2071.
 CLAIBORNE PARISH LIBRARY-901 Edgewood Dr., Homer, LA 71040-3009.
 CONNELL, Randall W.-810 Voyager, Houston, TX 77062.
 DIXON, STEPHENS, BLUDWORTH
 COWAN, Lena F.-4734 E Hampton, Tucson, AZ 85712-2724.
 ATKINS, BAILEY, KILGORE, MOSELEY
 CULBERTSON, Nelwyn Kirby-7742 Millicent Way, Shreveport, LA 71105-5607.
 STEVENS, TRABUE, STEERE, FULLILOVE

CUNNINGHAM, Carolyn J.-17128 Randall's Ferry Rd., Norwood, NC 28128-9465.
 SWARTZ, RIDLEY, CARROLL, GASTON
 CUPP III, Elvus Allen-52 Walnut Dr., Clifton Park, NY 12065-7428.
 HIGGS, SCOTT, FULLER
 CURBELLO, Jr., Lon F.-3011 Albermarle Dr., Pasadena, TX 77503-1401.
 CURBELO/CURBELLO/CORBELLO/CURRIELLO, YEAGER, de la MIRANDE, de la FOSSE.
 DALLAS PUBLIC LIBRARY-1515 Young St., Dallas, TX 75201-5499.
 DAUGHERTY, Frances HARRISON-349 Albert Ave., Shreveport, LA 71105-2905.
 MAXWELL, MURRAY; WESSON, KING
 DAVIS, Jean-17765 Gardner Rd., Dallas, OR 97338-9433.
 BLACKSHER, BENJAMIN, CARR
 DAVIS, Wanda Bowlin-102 Cynthia Dr., Kerrville, TX 78028-4805.
 GOFF, CARTER, WALKER, FERGUSON
 DICKSON, Col & Mrs Thomas P.-2201 Normand Ave., Bossier City, LA 71112-4335.
 MACKEY, McILREATH, HENNING, DAVIS
 *DILLARD, Walter L.-1602 Franklin Dr., Norman, OK 73072-2324.
 SALONE/SLOAN, FORD, WATSON, CALDWELL
 DOUGLAS, Julia L.-130 E. Lister, Shreveport, LA 71101-5019.
 McKENZIE, CROSS, PERKINS, NORRIS
 DUNLAP, Janine Johnson-P. O. Box 17887, Shreveport, LA 71138-0887.
 RHODES, COX, SMART E-mail janine@prysm.net
 DUPRE LIBRARY, USL-302 St. Mary Blvd., Lafayette, LA 70504-2038.
 FALCONE, Sarah Stokes-841 Fairview, Shreveport, LA 71104-4227.
 COX, FIDLER/FIEDLER, PURDY
 FARRINGTON, Arthur-5640 Beechwood Dr., Lawton, OK 73505-2902.
 KIMBALL, McLAUGHLIN, McMAIN
 FARRINGTON, William-119 Donelon Dr., Hanrahan, LA 70123-4703. (Life Member)
 FLOWERS, Amy Eileen Bishop-10559 Pineview Cir., Keithville, LA 71047-9551.
 FARRAH/FARRAR, McDOUGALD, LAMB, BORDEAUX
 FORD, Mrs. Jackie-2805 Dena Dr., San Angelo, TX 76904-5019.
 WILLIAMS, HOWARD, GREEN, WARD
 FRAZIER, John Purnell-611 Cypress St., Pittsburg, TX 75686-1107.
 SHIPP, CAMP, BROOKS, MARTIN
 FUTCH, Fay B.-Rt. 1, Box 571, Farmerville, LA 71241-9793.
 BRANTLEY, WILHITE, ROAN, RICHBURG
 GATLIN, Ms. Tommy-1501 Guadalupe, San Angelo, TX 76901-3136.
 MARTIN
 GAZIANO, Cecilie-4511 Fremont Ave S., Minneapolis, MN 55409-1744.
 BARNS/BARNES, CANNON/KENNON, LEATHERMAN, SKINNER
 GOODE, Susan Strong Littlejohn-314 Berkshire Pl., Shreveport, LA 71106.
 HARRIS, SMITH, HARGROVE, EATON
 GENEALOGICAL SOCIETY OF RIVERSIDE-P O Box 2557, Riverside, CA 92516-2557.
 GORMAN, Betty Jon-943 Fairview, Shreveport, LA 71104-4229.
 FENLAW, ROGERS, WARD, BOYD
 GOYNE, Jr., Col. & Mrs. Carroll Heard (Betty)-10019 Canterbury Dr., Shreveport,
 SHACKELFORD, GLASS, NUTT, BRANTLEY, KELLY, BRAZZEAL, PATE LA 71106-8401.
 GREEN, M/M Leonard (June)-3311 Fairfield, Shreveport, LA 71104-4103.
 SOWERS, WALLACE, PETERS, MONTGOMERY, GRIGG
 *GRIFFIN, M/M Willie R. (Patricia) 3884 Winterpark Dr., Shreveport, LA 71119-7011.
 KELLEY, HARTWELL, GRISSOM, JACKSON, FORT/FORTE, WILLIAMS, WAGNER
 GRIFFITH, Norma Jean-1429 Claiborne Ave., Shreveport, LA 71103-4203.
 TIMMERMAN, FARMER, FIELDER
 GRISHAM, Louise J.-P O Box 202, Benton, LA 71006-0202.
 JONES, GRISHAM/GRESHAM, GIBSON, CURRY/CURREY

GRITZBAUGH, Sherry-4507 Verone St., Bellaire, TX 77401-5513.
 WOOD, STOW, ANDERSON, WISE
 HALL, Pamela J.-P O Box 7066, Vero Beach, FL 32961-7066.
 WILSON, CRIER
 HARDBERGER, Bennie Bailey-1212 Cardinal Dr., Thibodaux, LA 70301-4815.
 ROBERSON, HELMS
 HENDERSON, Roy L.-334 Yolanda, Shreveport, LA 71105-4338.
 COYLE, LOGSDON, RICHARDSON, TUNGET
 HERRING, Florence Palmer-Box 1104, 496 Lake Rd., Waskom, TX 75892-4042.
 MURPHY, WILSON, MCKAY, DULANEY
 HEWGLEY, Anna Beth-744 W. William Cannon Dr., Austin, TX 78745-3972.
 DISMUKES, MERRITT, HARDEN/HARDIN, HINTON
 HITCHCOCK, Geraldine Stanberry-4015 Richmond, Shreveport, LA 71106-1031.
 HALE, HAWKINS
 HOPE, Lillian Barnes-106 Larkin St., Benton, LA 71006-9413.
 THORNTON, CROW, EDWARDS, CUMMINS
 HUNTER, Margaret Phillips-973 Capt. Shreve Dr., Shreveport, LA 71105-2806.
 NOLAND, POOLE, MOSELEY, MIXON
 ISBELL, Rachel Odell Wyatt-8935 Blom Blvd., Shreveport, LA 71118-3407.
 REEKS, WRIGHT, JORDAN, HICKS (Life Member)
 JENNINGS, Dale-194 Vance Rd., Benton, LA 71006-9585.
 VANCE, BROWNLEE, ARNOLD
 JOHNSON, Evelyn E.-5506 Golden Meadows, Bossier City, LA 71112-4940.
 ELSTON, MOORE, CARR, HARRELL
 JOHNSTON, Barbara Louise Stewart-9522 Hampstead Cir., Shreveport, LA 71106-7698.
 McBRIDE, STINSON
 JONES, M/M Edgar L.-7376 Grabault Rd., Bastrop, LA 71220-7141.
 CHUNN, SPROLES, GREER, BROWNLEE, FUNDERBURK, SHEPHARD/SHEPPARD.
 KEETH, James B.-10839 Crown View, San Antonio, TX 78239-1517.
 FORD
 KENNEDY, Ronald C.-7627 Fernbrook Ln., Houston, TX 77070-3720.
 WILSON, CRUMP, GIBSON
 KINTZING, Betty Ann-3515 N. Market, Shreveport, LA 71107-3814.
 GREEN, ELKINS, HANNEMAN/N
 KRAUSE, Jr., M/M Edward Herman (Ethel)-2518 Waverly Dr., Bossier City, LA
 BEHLING, SAUER, HACKBARTH, STEINHAUS, CALLENDER, RUSSELL 71111-2419.
 LAMBERT, Joan E.-31646 Delaware Ave., Livonia, MI 48150-3825.
 KLING, EARLY, SINNOTT, RANS
 LAZARUS, Jr., M/M Harry A. (Joan)-7709 Tampa Way, Shreveport, LA 71105-5701.
 WENCHALOUS, POLITZKA, VOTLUCKA, HILDRETH, ELLIS, HICKS, STANTON
 LEMIEUX, Dr. Donald-P O Box 44125, Capitol Sta., Baton Rouge, LA 70804-4125.
 LEON, M/M Neil (Nelda B.)-5453 Pinehill Rd., Shreveport, LA 71107-2432.
 GREENE, BUTLER, ADAMS, CROWNOVER
 LIBRARY OF CONGRESS-10 First St., Washington, DC 20540.
 LINDBLAD, Doris M.-RR #5, Box 365, FM 3419, Texarkana, TX 75501-0410.
 MERCHANT, COLLINSWORTH, McCORMICK
 LOFTIN, Marguerite J.-1411 Edgemont Cir., Bossier City, LA 71111-2200.
 ELLIOT, RAWLS, HOLCOMBE, SMITH
 LONG LIBRARY, UNO, Lake Front, New Orleans, LA 70148.
 LOS ANGELES PUBLIC LIBRARY-630 West 5th St., Los Angeles, CA 90071-2002.
 LOUISIANA ROOTS-100 N Main St., Marksville, LA 71351-2406.
 LSUS LIBRARY & ARCHIVES-8515 Youree Dr., Shreveport, LA 71115-2399.
 MATHEWS, Reed Carlton-625 McCormick, Shreveport, LA 71104-4905.
 MATHIS, ROGERS, KIRTLEY

McAVOY, SHARRON B.-3782 Richmond, Shreveport, LA 71104-4737.
 BOYER, JOLLY, CHASE
 McGUFFEY, Ann Hall-1102 Wellington Dr., Duncanville, TX 75137-4923.
 CARLTON, SCARBOROUGH, CONNELL, RUSSEL
 MEYER, Dorothy-Rt. 5, Box 161A, Victoria, TX 77905-2018.
 MUSE, DOSS, ORTNER, SHULL
 MOUGEOT, Stella-2403 Waverly Dr., Bossier City, LA 71111-2416.
 MAJOR, LANGLOIS, CARMOUCHE, JOFFRION
 MURPHY, M/M Miles (Montez Osborn Rogers-1521 Ramberlyn Way, Shreveport, LA 71105-5418.
 RAINS, ARMSTRONG, KENNEDY, BOX, CARMICKLE
 NAPP, Dorothy Little-216 Pine Lake Dr., Haughton, LA 71037, 9504.
 GOUGH, IVEY, WARREN, WALTERS
 NASH, Lillian H.-157 E. Herndon, Shreveport, LA 71101-5056.
 HOWARD, BORDEN, ROBERTSON, COOK
 NATCHITOCHES PARISH LIBRARY-431 Jefferson, Natchitoches, LA 71457-4699.
 NEILL, Beatrice Varner-P O Box 9, Skellytown, TX 79080-0009.
 SHIELDS, REYNOLDS, HALLMARK, BALLARD
 NELSON, B. Delight-1813 Bayou Cir., Bossier City, LA 71112-4036.
 GOODWIN, SANSOM, BOON/BOONE, TONER
 NEWHOUSER, Winona-7400 Glen Leaf Dr., #68, Shreveport, LA 71129-3711.
 HENRICHSON, RILEY, SANDFORD, RILEY smartgen@aol.com
 NEW ORLEANS PUBLIC LIBRARY-219 Loyola Ave., New Orleans, LA 70112-2044.
 NEW YORK PUBLIC LIBRARY-Grand Central Sta LHG, P O Box 2237, New York, NY 10163-
 NORMAN, Myra H.-P O Box 944, 604 Bolivar St., Anahuac, TX 77514-0922. /2237.
 LEDET, RENFRO, HAYES.
 R. W. NORTON ART FOUNDATION-4747 Creswell Ave., Shreveport, LA 71106-1889.
 NSDAR SERIALS LIBRARY-1776 D St NW, Washington, DC 20006-5392.
 O'BRIEN, M/M James Dewey. (Neoma O'Kelley-812 Braeburn Dr., Ft. Washington, MD 20744.
 SKINNER, GAINES, STEWART, BRAMLETT
 OLIPHANT, M/M James A. (Patsy R.)-1508 Bellaire Blvd., Bossier City, LA 71112-3643.
 BRIGGS, HADEN, PADGETT, DAVIS, FORREST, MURPHEY, HILLIARD
 *OLIVER, M/M Chris (Cassandra)-4111 Pines Rd., #34, Shreveport, LA 71119-7321.
 WILLIAMS, DEVORICE, BELLE, PORTER, ENGLISH, BAKER, JONES, STONE
 OLSON, Marie K.-35 Chadwick Dr., Charleston, SC 29407-7450.
 GARRETT, KILGORE, KEENAN, HOLLOWAY
 O'REILLY, Mary Jo Muth-4220 Reilly Ln. Apt C-110, Shreveport, LA 71105-2848.
 GREER, BAKER, McCOY
 PANTLIK, Ruby V.-HCR 4, Box 49018, Alturas, CA 96101-9518.
 COWAN, MEEKS, RAINEY, NICHOLS
 PEDDY, Sr., Glendel W.-RR 1, Box 30B, Sullivan, IL 61951-9801.
 GARLAND, FERRIER, BRAY
 PETREY, M/M Curtis N.-130 Chelsea Dr., Shreveport, LA 71105-4206.
 POINDEXTER, LaGRAND, LeGRAND, RATLEY
 PIERCE, Mrs. Jimmie L. (Bibbit)-7226 Beaufort Way, Shreveport, LA 71129-3413.
 BODDIE, MIXON, RICHMOND
 PRATT, Mrs. Charles (Louise)-141 Charles, Shreveport, LA 71105-3719.
 SPURLOCK, HOWARD, RICHARDSON, LITTLE
 RED RIVER HERITAGE SOC., Red River Par Lib-P O Box 1367, Coushatta, LA 71019-1367.
 RINAUDO, Nancy K.-722 Acklen St., Shreveport, LA 71104-3902.
 HALVERSON, BERRY, GREENE, HARRIS
 RIVERS, Ann-9506 Overlook Dr., Shreveport, LA 71118-4119. (Honorary Member)
 SUTTON, CLAY, CHILDS, BREASELL
 ROSE, M/M Victor C. (Vernelle)-2933 Jonathan Ln., Shreveport, LA 71108-5563.
 WILLIS, BERRY, DABBS, PUTNAM/PUTMAN, PATTERSON, TAYLOR, TILLMAN

*SABBATH, Thelma-1812 Jewella Ave., #2305, Shreveport, LA 71109-2031.
 GREEN, HAYNES
 SAN ANTONIO PUBLIC LIBRARY-600 Soledad, San Antonio, TX 78205-2238.
 SCHICK, Charlotte Carter-1017 Coral Isle Way, Las Vegas, NV 89108-1764.
 BOND, MAYFIELD, WARD, BEAIRD
 SEWARD, Elinor M.-P O Box 728, Homer, LA 71040-0728.
 BARNES, BROWN, TURBIVILLE/TURBERVILLE, WHITE
 SHAVER, Annette Duty-Box 368, Stamps, AR 71860-0368.
 GILLMER, DOOLY, DeFEE
 SHREVE MEMORIAL LIBRARY-Gen. Dept., 424 Texas St., Shreveport, LA 71101-5452.
 SMITH, Marie-2518 Benton Rd., Bossier City, LA 71111-2306.
 BENSON, ROBERTS, NEATHERLIN, CLINTON
 SOUR, Wilhelmina E. (Billie)-10007 Georgetown, Shreveport, LA 71115-3408.
 ELSTON, McDADE, MOORE
 SPILKER, M/M William G. (Bonnie)-8805 West 80th St., Overland Park, KS 66204-3307.
 LINDSEY, FLOYD, JOHNSON, SCOTT
 SPUHLER, Shirley H.-2014 S Palm Ct., Pasadena, TX 77502-5553.
 THOMPSON, DUNCAN, CALK, GENTRY
 STATE LIBRARY OF LA- P O Box 131, Baton Rouge, LA 70821-0131.
 STEPHENS, Isom L.-979 Amethyst St., Layton, UT 84041-2554.
 FOX, LARK, HUNT, JEFFREYS
 ST. JOHN the BAPTIST PAR LIB-1334 W. Airline Hwy, LaPlace, LA 70068-3705.
 STOLL, Nellygrace Christie-2314 Belmont, Bossier City, LA 71111.
 STOVER, FOWLER, MAYS
 STOVALL, Linnie D.-421 W Strange St., Stamps, AR 71860-2015.
 STRANGE, HENDRIX, CUMMINGS
 SW ARKANSAS REGIONAL ARCHIVES-P O Box 134, Washington, AR 71862-0134.
 TAYLOR, Marie-3506 Junior Pl., Shreveport, LA 71119-0504.
 KELLOGG, WARFIELD, GASTON, VICKERS
 TEAGUE, Joy-321½ Center Point Rd., Weatherford, TX 76087-4942.
 TUCKER, KIRKENDALL, PILAND
 WALKER, Harold G.-7826 NW Morocco Dr., Lawton, OK 73505-1123.
 HAMILTON, TATE, LORENZ
 WARD, Walter Howard-103 Crestwood Dr., Tullahoma, TN 37388-5602.
 WARD, WILLIS, GRAY, WILSON
 WEEKS, Ethel F.-160 Weeks Rd., Quitman, LA 71268-4512.
 FORREST, FREEMAN, HARVEY
 WEILAND, M/M Herman L. (Veretta)-2511 N. Waverly Dr., Bossier City, LA 71111-
 WITT, PENDERGRASS, RITCHEY, YEAGER, LEONHARDT, FAIRBANKS, RUDY, LEWIS /5933.
 WESTON, M/M Morgan C. (Dickie P.)-2204 Surrey Ln., Bossier City, LA 71111-5540.
 DUNNAWAY, CANTRELL, RUCKMAN, DERRICK, ROBERTSON, McINTOSH, SWEENEY/SWINNEY
 WHATLEY, Aimee-730 Slattery Blvd., S'port, LA 71104-4922 /GOOLSBY/GOULSBY
 ASHLEY, BANKS, DOUGLAS, GIBSON
 WHATLEY, Constance-2046 Capt. Shreve Dr., Shreveport, LA 71105.
 CARTER, DAVIS, HAND, MARTIN
 WHITEHEAD, Alice R.-1527 Dora Ann Pl., Shreveport, LA 71105-5414.
 KELLY/KELLEY, McDONALD, BARLOW, BOREL
 WILLIAMS, Mavis H.-Rt 1, Box 224, Ringgold, LA 71068-9056.
 HOLT, NORRELL, MOON, WARD
 WILLIAMS, Merrill C.-23750 Highland Valley Rd., Diamond Bar, CA 91765-1184.
 SHELTON, STARNES, FORTSON
 WINDHAM, M/M Julious (Thelma L.)-3408 Oleander, Bossier City, LA 71112-3626.
 BAILEY, DEFEE
 *WOODS, Isabelle M.-2016 Surrey Ln., Bossier City, LA 71111-5535. (Life Member)
 TAITT, MONIZ, HOLMAN

BIENVILLE PARISH LIBRARY-2768 Maple St., Arcadia, LA 71001-3699.
 CARTER, Frances Walker-1723 Rhett Butler Dr., Lilburn, GA 30047-5624.
 BARNES, NORWOOD, REYNOLDS, YOUNGBLOOD
 GREGORY, KAY KERBOW-#3 Hillside Ct., Austin, TX 78746-6436.
 CAIN, HYDE, KERBO/KERBOW
 HOLDEN, N. R.-Rt. 1, Box 80, Angleton, TX 77515-9223.
 LYONS, McDANIEL, SULLIVAN
 TRULL, Ester-2276 Strong Hwy., El Dorado, AR 71730-9304.
 VINES, SMITH, LOWERY
 CODAY, Linda-2402 Waverly Dr., Bossier City, LA 71111-2417.
 WILSON, DICKSON, ATKINS
 BLAYLOCK, Karen-2012 Eddy St., Hattiesburg, MS 39402.
 PITT, TALLEY, MAHAN, WADE
 BROUSSARD, Bettv-137 Farquar Ln., Lake Charles, LA 70611-5244.
 GILBERT, BEAVER, YOUNGBLOOD, VESSELL
 TERRY, Frances L.-5410 Yarwell Dr., Houston, TX 77096-4010.
 HUGGINS, THOMPSON, CALDWELL, WILLIAMS e-mail flt2@juno.com
 TRUE, Mary B.-1020 Golf Course, Andrews, TX 79714-3810.
 HAMMONDS, WILSON, NOLAN, YOUNG
 ALLISON, Eloise T.-P O Box 564, Ringgold, LA 71068-0564.
 THOMAS, TYLER, VAUGHN/VAUGHAN, WILLIAMS
 ANDERSON, Helene E.-91 Tulip Ave., CA Al Apt, Floral Park, NY 11001-1901.
 EDWARDS, JORDAN
 BAUGH, Ella Jean-257 Burt Ln., West Monroe, LA 71291-7486.
 DYKE, HARRIS, HUTSON, BOUNDS
 CENTENARY COLLEGE OF LOUISIANA LIBRARY-P O Box 41188, Shreveport, LA 71134-1188.
 NEAL, Carole E.-3501-35th Ave #14, Oakland, CA 94619-1343.
 SEALS, JAMISON, WARD, CRINER
 THORNHILL, Mrs. Lewis (Veda)-595 S. 450W, Cedar City, UT 84720.
 COLLINS, STEPHENS, MADISON
 WREDE, Carol J.-209 W. Kingwood, Enterprise, AL 36330.
 JONES, PUGH, LONG, STANLEY
 ZAHN, Myrtle L.-P O Box 745, Winnie, TX 77665-0745.
 MARBURY, LAUDER, GREER, SLAUGHTER
 BAZER, Judith Delia-P O Box 718, Doyline, LA 71023.
 BOYD, COPELAND, BRADLEY
 MCGATHEY, Suzanne Dampier-7640 So. Delaware St., Indianapolis, IN 46227-2419.
 GELISPI/GILISPIE, McCARTY, WOODS
 POCKRUS, Helene-6344 W 10890 N., Highland, UT 84002-3409.
 POTTER, GOODWIN, EUBANKS, MALONE TXHLP44@enol.com
 WILLIAMS, Mrs. T. R.-6400 Middle Ridge Ln., Chattanooga, TN 37343-3526.
 RUSSELL, ATKINS, McLAWCHLIN
 BARKLEY, Doris A.-13300 Weowna Way, White City, OR 97503-9572.
 CALDWELL, CHRISTIAN, HASTINGS, GRANSBURY
 PRINGLE, Mrs. Vernon-3512 Reilly Ln., Shreveport, NA 71105-2218.
 FERGUSON/FURGERSON, TATUM, ALLBRIGHTON/ALLBRITTON
 BARNES, M/M Bob (Kathy)-4916 Flat Creek, Fort Worth, TX 76179-5030.
 OAKLEY, SNIDER, BULL, MILLER
 BOWERS, Kathryn E.-5117 Sealands Ln., Fort Worth, TX 76116-8415.
 EVERETT, PLEASANT, BUCKLEY, COOPER
 DAVIS, Dinah Jean Lee-607 Kennon St., Minden, LA 71055-2307.
 LANGSTON, BRYAN, KNOX, HALE e-mail rdavis@prysm.net
 DILL, Marjorie Henry-315 Lynwood Dr., Houma, LA 70360-0572.
 BROOK, FOURNET, AMI/AME/AMY

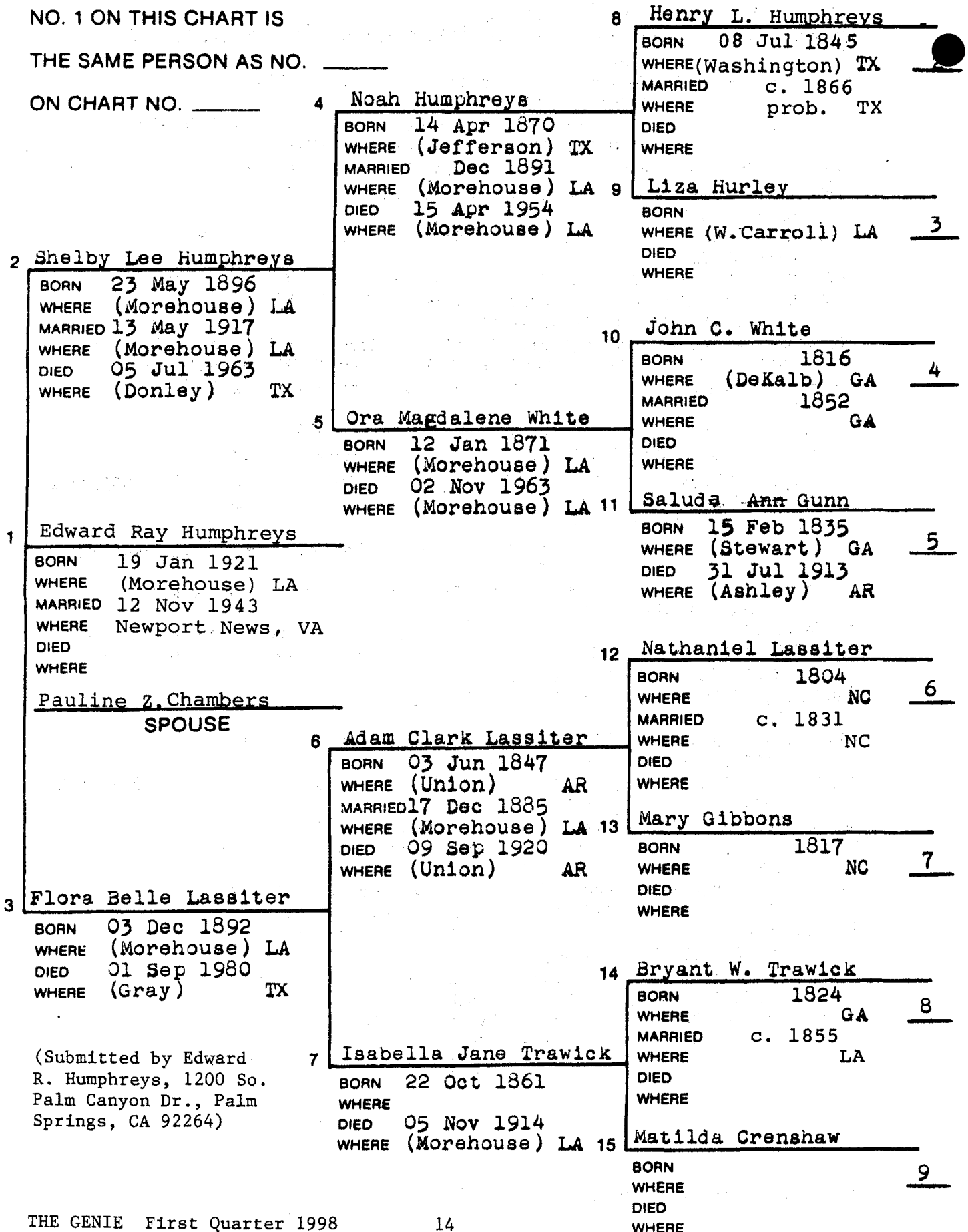
DODSON, Carolyn-14582 Hwy 84, Logansport, LA 71049-2220.
 YATES, WINTERS, MOORE, MALCOLM
 HOOKER, Sandra Hawthorne-Rt. 6, Box 138A Davis Ln., Marshall, TX 75672-9205.
 WINBURY, ESTES, ADDY
 BEAM, Villa W.-1310 Foothill Dr., Kalispell, MT 59901-8250.
 WORSHAM, WILLIAMSON, EVANS, COOK
 HILL, M/M W. B. (Emma Ruth)-49 Elkins Lake, Huntsville, TX 77340-7301.
 BALLARD, LYLES, BROWN, HILBUN, BRANTLY, WIMBERLY
 SEEWALD, Mrs. Hughes-Rt. c, Box 376, Amarillo, TX 79124-9577.
 GROVES, Jeane M.-6034 E. Beverly, Tucson, AZ 85711-5237.
 CASEY, SHIPP
 FREEMAN, Beverly A.-2225-33rd Ave., So., Seattle, WA 98144-4918.
 GREENHOUSE
 SAN JOSE REGIONAL FAM. HIS. CENTER, P O Box D, San Jose, CA 95151-0004.
 ANDERSON, Jack-P O Box 596, Webers Falls, OK 74470-0596.
 ALLEN, WALLACE, HOSKINS, RUSSELL
 GLISSON, Patricia-1215 Mill Hill Landings, Richmond Hill, GA 31324-9728.
 ARTHUR, BYRD, ROSS, CORNOGG, CORNOSS e-mail P31324@aol.com
 HEARN, Doris N.-Rt 2, Box 12, 844 Hearn Rd., Shongaloo, LA 71072-9228.
 NUGENT, RYLAND, FUQUA
 THORNHILL, William-P O Box 155, Harvey, LA 70059-0155.
 CROWELL, Calvin Edward-3901 Barrett Ave., Richmond, CA 94805-1823.
 SHARP, TUCKER, McCORD (NEW) BOXCARCL81@aol.com or BUNNIE 4059@aol.com.
 BURKE-LEE, Michelyn, P O Box 28, Upper Marlboro, MD 20773-0078.
 MYRES, McLIN, CALDWELL
 COATES, Geneva Lumley-10701 South Broadway, Oklahoma City, OK 73170-6411.
 ROBINSON, GIBBONS, ALYEA
 MOORE, Mrs. W.M. (Ruthie)-818 Vernal Ln., Shreveport, LA 71118-4126.
 WRIGHT, DAWSON, GRUBBS, JACKSON
 SANTA CLARA CO., HIS & GEN SOC.,-2635 Homestead Rd., Santa Clara, CA 95051-5387.
 NEATHERY, M/M Glenn D. (Betty W.)-330 S. Van Ave., Houma, LA 70363-6769.
 WEEMS, CURRY, BROWN, NOBLES
 RANDOLPH, Billy R.-Box 243, Waskom, TX 75692-0243.
 HANKS, DODSON, BRUMBELOW
 BARLOW, Jr., Ray Allan-545 Oneonta, Shreveport, LA 71106-1619.
 KARCHER, ANSLEY, CANNON. ORTON
 *DANIEL, M/M Jimmy Ray (Juanita)-124 E. 80th St., Shreveport, LA 71106. (NEW)
 JOHNSON, WILLIS, HENRY
 HOWELL, Davis B.-111 Parlange St., Thibodaux, LA 70301-6434.
 *LEWIS, Johnnie S.-2755 Murphy St., Shreveport, LA 71103-2308.
 SUMNER, TAYLOR, GREEN, PHILLIPS
 VAUGHN, Anna M.-4855 Greenwood Hgts., Greenwood, LA 71033-2310.
 VAUGHN/VAUGHAN, DeBOARD, DUBOIS, DEVODE, LaBORDE
 RHODES, Barbara Ann-13923 Sunset Dr., Whittier, CA 90602-2556.
 AUSTIN, DEARMAN, WELDON
 McDONALD, Margaret-4111 Farhills Dr., Austin, TX 78731-2811.
 SHROCK, PRICE, CARMICHAEL, SADLER
 YARBROUGH, Eva-Box 309, Cherokee, TX 76832-0309.
 BERRY, DEVORE, SMITHERS /SMOTHERS

* * * * *

PEDIGREE CHART

CHART NO. 1

NO. 1 ON THIS CHART IS
THE SAME PERSON AS NO. _____
ON CHART NO. _____



THE ARNOLD FAMILY OF
BOSSIER PARISH (COUNTY), LOUISIANA

By Dale Jennings

(This portrayal of Larri Jennings' Arnold family line was done by husband, Dale. They live at 194 Vance Road, Benton, Bossier Parish, LA.)

Besides being Bossier Parish maternal ancestors of Larri Jennings, the Arnolds, Brownlees, and Vances had more in common. An ancestor in each family line served in the Revolutionary War, and each family came through Abbeville County, South Carolina, in their migration to northwest Louisiana. The Arnolds, like the Vances, came to South Carolina from North Carolina; whereas, the Brownlees came to this country through Charleston. The first known Arnold ancestors were great-great-great-great grandparents, John and Mary Arnold of Perquimans County, North Carolina. John Arnold was born in Perquimans County in 1750 and married Mary Pettis there in 1770. He served in the North Carolina Continental Line in the Revolutionary War, and after the war, moved with his family to Abbeville County, S. C. Their two known children were Millie Arnold and William Pettis Arnold. William Pettis was born in Perquimans County in 1775, lived in Abbeville County, and married Elizabeth Eddins in 1799. William and Elizabeth Arnold moved to Oglethorpe County, Georgia, and from there to Madison County. William died there in 1832, leaving his widow and nine children--all boys except the first and last born. The year of birth of son, George, in South Carolina is uncertain. This ancestor, George Washington Arnold, and his brothers, Park Eddins and Samuel Overton, were named as executors of their father's 1831 will. It must be assumed that he had by then attained the legal age of twenty-one. Also mentioned in the will was son, "Charly (under 21)." George's year of birth is concluded to be ca. 1806, based on his post-Civil War request for presidential pardon, even though some census reports indicate 1814. In his sworn statement, dated July 11, 1866, requesting pardon and restoration of citizenship, G. W. Arnold stated his age to be sixty. William P. Arnold willed that "should my son Samuel intermarry with Adeline Carithers, the daughter of James Carithers now of this county, that he forfeit all interest in my estate--." In Georgia, the Arnolds married into the families of Ware, Johnson, Banks and Sims. Samuel married Elender Johnson; Charles married Mary Banks; and George married into the well-to-do Sims family with his marriage to Salina Sims. George Washington Arnold and Salina Catherine Sims were married in Madison County, Georgia, in 1838. They, along with other related Arnold family groups, moved westward to Coweta County. They would also have nine children.

George Washington Arnold, his brother, Charles Wesley Arnold, and William James Arnold came to Bossier Parish, Louisiana, in 1859 to purchase property. William was a sixteen-year-old student in Charles' Coweta County household during the 1850 census, and was probably a nephew. Charles and William bought their acreages on Cypress Bayou in central Bossier Parish in September, 1859. G. W. Arnold made his first purchase of land in the area, from a nephew, in early January, 1860. George's youngest sibling, Emily Frances Arnold, had married a minister, Artemus Watson Ogilvie. Artemus and Emily had eight children before she died in Coweta County in 1850. When Artemus Ogilvie died in 1855, he willed that their eight orphaned children be divided between two of his sisters residing in Desoto Parish, a neighboring parish to Bossier. When the second eldest, Norman Chappell Ogilvie, came of legal age in 1859,

he purchased land on Cypress Bayou. It was this 240 acres which George Washington Arnold bought from his nephew on January 4, 1860. It is believed that George had helped relocate his sister's orphaned children to northwest Louisiana in 1855 or 1856. He may have been favorably impressed with the country at this time, leading to their coming west. Large scale planters such as the Arnolds felt the need for new land in order to improve production and provide opportunities for succeeding generations. The fertile Red River Valley in northwest Louisiana had been opened to extensive planting two decades earlier with the removal from the river of the "Great Raft," an ancient log jam. The land could now be leveed and planted, and the cotton grown sent down the river to its junction with the Mississippi, and to market at New Orleans. G. W. Arnold's second land purchase was formalized on January 23, 1860, and this would be where he would make his home. This 762-acre plantation was mostly "river land." Although not actually on the Red River, it was the flat, fertile flood plain desired for the planting of cotton. The existing house was located on a two-acre site on the clay soil "hill land," elevated above and overlooking the fields. This provided the occupants the benefit of the breezes and kept them out of the mud during the rainy seasons. The house was a hewn log, two-story "two pen" with "dog trot" between the two lower rooms. This construction facilitated ventilation of the rooms and a cool, shaded breezeway for relief from the heat. The house, with modifications, is still there and still occupied. Although known as "Home Place," G. W. Arnold's great granddaughter, Larry Arnold (Vance) Hunt, also remembers the site being called "Lonesome Hill." Three of the antique pieces still in the house are those brought from Georgia by the Arnolds. Much of the other antique furniture in the house was bought in New Orleans and shipped up river to furnish the new home. The G. W. Arnold plantation abutted the Palmetto Plantation, which was purchased in 1850 by another of Larri's great-great grandfathers, Allen Vance, of Abbeville County, S. C. Charles and William Arnold were established with their families on their plantations for the 1860 census in July. G. W. Arnold had with him as yet only his overseer and 34 slaves. The 1860 Coweta County census taken in August counted G. W. again, with his family, at Newnan, Georgia. (The 1860 census index lists no Arnolds in Bossier Parish. The three Arnold families were enumerated there in consecutive households, but poor penmanship by the enumerator caused their exclusion from the index.)

John Michael Arnold, the second child of George Washington and Salina Sims Arnold, was born in Georgia on October 19, 1842. He attended Newnan Academy prior to the family's move to Louisiana. The Arnolds completed their move to Louisiana in 1860, on the eve of the Civil War. G. W. Arnold would state that he had opposed secession, but supported the Confederacy once the die was cast by his new state. John joined the first company formed in May, 1861, when Louisiana went out. The unit was called the "Bossier Boys" because most of the young men were no older than eighteen-year-old John. The "Boys" were given a rousing send-off and marched from Bellevue, the parish seat, to Shreveport, just across the river. There they boarded the steamboat, "Grand Duke," and traveled down the Red and Mississippi Rivers to New Orleans. The Bossier company had signed one-year enlistments, and were not accepted by the governor, who wanted only three-year enlistments. This requirement was soon rescinded, but not before the Bossier Boys had returned home and disbanded. Most joined the "Vance Guards" or other parish companies being formed. John returned to Georgia and joined the "Newnan Guards," Company A, 1st Regiment, Georgia Volunteer Infantry. Family tradition is that he was lent a slave by his father to accompany and assist him on his journey

back to Georgia. In March, 1862, the one-year enlistments expired for the men who initially formed the Newnan Guards. Almost to the man they mustered out and joined 2d Company A, 12th Battalion, Georgia Light Artillery. John's brothers, Samuel and Willis, had joined the "Bossier Cavalry," Company C, 6th Louisiana Cavalry Regiment, which was mustered into Confederate States service on April 6, 1862. John returned to Louisiana and enlisted at Monroe on May 12, 1862--joining the company in northeast Mississippi, where they were fighting around Corinth. John's older brother, Samuel O. Arnold, died from measles that summer, but John and Willis survived the war. John was promoted to 1st Lieutenant the next year, and held that rank until the end of the war. He surrendered the company as its commander at Mansfield, Louisiana, in May, 1865. (The surrender must not have been a strictly formal event because John was able to keep his sword, which is still in our possession.)

The 1870 U.S. population census lists as head of Bossier Parish household number 3535: Arnold, S. C., (Salina Catherine), Female, aged 50. (George Washington Arnold had died in 1868.) Children at home were: J. M. (John Michael), 26; Willis, 24; E. F. (Emily Frances) 22; Allice (Alice Mentoria), 20; Elonso (Alonzo Franklin), 18; S. M. (Sarah Malita), 15; and G. W. (George Washington, Jr.), 10. Samuel Overton had died during the Civil War. Unexplainably missing was Loucinda Arelia, aged 12, who was apparently omitted in error. Also listed as a household member was T. J. (Thomas Jefferson) Tidwell, aged 30. John and Willis were identified as farmers, worth \$10,000 and \$4,000, respectively. The matriarch, Salina Catherine Arnold, gave her monetary worth as \$52,000, and her occupation as "Retired." She would die before the year ended.

Of the five Arnold sons, only John married. Alice was the only one of the four daughters who did not marry. Emily (Emma) was the first to marry. Although listed in the 1870 census as an Arnold, she had married W. L. Hilman, a Georgia Confederate veteran, in January, 1866, and was widowed in October, 1868. Emily (Arnold) Hilman remarried in January 1871, to Thomas Jefferson Tidwell. A biographical sketch of Mr. Tidwell states that he was born in Tennessee, and moved with his family to Arkansas shortly before the Civil War. He joined an Arkansas regiment and was active in all the western Confederate states to include participation in the battles of Shiloh and Mansfield. After the war T. J. Tidwell settled in Bossier Parish as a farmer on a rented farm.

The next daughter to marry was Sarah (Sallie) Arnold. Sallie married B. F. Smisson, a Texan, in October, 1875. They went to live in Jefferson, Texas, but returned the next year to build their Little Bee Bend Plantation house near "Home Place" on Willow Chute Bayou. The house still stands near the corner of Airline Drive and Kingston Road south of Benton. Until her death in 1949, the widowed Sallie lived there with her also widowed niece, Sallie (Tidwell) Bradford. The brother of Sallie Bradford's husband, Richard, was the writer, Roark Bradford. He wrote many of his works while staying at Little Bee Bend, including "Ol Man Adam and His Family." The story was adapted for the stage as "The Green Pastures" by Marc Connelly, for which Bradford and Connelly were jointly awarded the 1930 Pulitzer Prize.

Loucinda (Louda) Arnold was married to Newton Calvin Brownlee in November, 1877. Newton's father, John A. Brownlee, had come to Bossier Parish from Abbeville County S. C., about 1845. He bought his plantation

in the Brownlee Road area of present-day Bossier City before returning to Abbeville County to marry Mary Cowen in 1848. He returned with his bride, and they began their family of three sons and one daughter. Louda Arnold's brother, John, had already married Newton's sister, Louisa Jane (Lou) Brownlee, in September, 1874. These marriages would produce some double-first cousins, and the marriage of John Arnold to Lou Brownlee would ensure Larri's family line.

Alonzo (Frank) Arnold died as a young man, of swamp fever, in 1880. Willis died in 1888. George Washington (G. W.), another confirmed bachelor, died in 1929. Alice Mentoria died unmarried, date unknown. All are buried in the Arnold-Brownlee-Tidwell family section of the old Red River Cemetery. The burial ground is located at the site then known as Wallace Springs near the properties of Charles and William Arnold. In the summer of 1860, Charles and William were instrumental in securing a donation of four acres there at the Red River Church, which was used jointly by the Baptists and Methodists. The additional acreage was designated for religious purposes, which would include cemetery space, for all religious denominations. The wrought-iron fenced family plot accomodates many Arnolds, Brownlees, Tidwells and others related by marriage.

John M. Arnold began buying land in 1869. By the middle of 1871, he had acquired 3,300 acres, including the 1,800-acre Red Chute Plantation, which he purchased that year for twenty-five thousand dollars. This, like most of his other acquisitions, was bought on credit. John sold his brother, Willis, 640 acres before the end of the year. He had overextended, and he continued to sell off his land. The depression of 1873 accelerated John's financial woes. His note on the Red Chute Plantation was sold to an individual who demanded the eight thousand dollar balance. Suit was brought against John, and his last 660 acres was seized and sold at sheriff's sale. He also settled for his one-eighth share of his parents' estate in order to complete the satisfaction of the judgement against him. That 110 acres was purchased on credit by his brother-in-law, Thomas Jefferson Tidwell. In 1876, the G. W. and S. C. Arnold succession was settled. The remaining seven-eighths of the Arnold property was divided by mutual consent between John's three brothers and four sisters. Frances Emily, who was married to T. J. Tidwell, acquired the family home. "Home Place" has been restored by Mrs. Clara Tidwell Bryan, the widow of George Washington Arnold's grandson, Thomas Arnold Tidwell, and is known as the Arnold-Tidwell Home. The house was precluded from being listed on the National Register of Historic Places because of alteration of the front porch.

John and Louisa Arnold had three sons, James Harvey, Newton Alonzo and James Brownlee, of which only Newton married. They had one daughter, Mary Emily, who married William Calvin Vance, Jr. The two children from this marriage were William Calvin Vance, III, and Larry Arnold (Vance) Hunt, mother of Larri Jo (Hunt) Jennings. John lived most of his married life at the community of Brownlee in Bossier Parish as a farmer and parish tax assessor. He was old and blind when Mary Emily was widowed in 1910. For propriety's sake he moved in with Mary and the plantation foreman, who also lived in the house. Mary later married her foreman, Grey Stinson. No children resulted from this marriage. John M. Arnold died December 8, 1928, the last survivor of the "Bossier Boys," and is buried in the Red River Cemetery. Louisa, who died in 1935, is buried in Shreveport's Oakland Cemetery, where she was joined by her son, James Harvey Arnold, in 1971.



GEORGE WASHINGTON & SALINA CATHERINE SIMS ARNOLD

Sources:

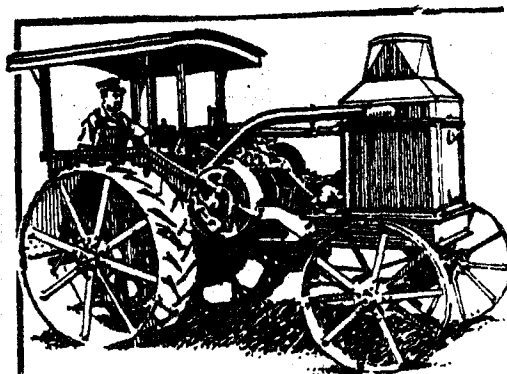
1. Leonardo Andrea Collection, Columbia, S.C.
2. 215-John Manry Collection, LSUS Archives, Shreveport, La.
3. The Arnold Family of the South Newsletters.
4. Biographical and Historical Memoirs of Northwest Louisiana, Chicago, 1890.
5. Henderson, Lillian, Roster of the Confederate Soldiers of Georgia 1861-1865
Volume I
6. The Bossier Banner, Bossier Parish, La.
7. Civil War pension and pardon applications.
8. Government records: census, wills, probates, conveyances.
9. Conversations with Larry Arnold Hunt and Clara Tidwell Bryan.

* * * * *

ALTGA COMMITTEES

<u>COMMITTEE</u>	<u>CHAIRMAN</u>	<u>MEMBERS</u>
Hospitality	Winona Newhouser 686-8292	Billie Sour, Thelma Sabbath
Publicity	Betty Jon Gorman 868-2807	Carl Hallgren
Telephone	Winona Newhouser 686-8292	Thelma Sabbath, Lillian Nash
		Sharron McAvoy, Vernelle Rose,
		Constance Whatley, Eleanor Gov-
		ern, Betty Gorman, Cassandra
		Oliver, Dale Jennings
Finance	Isabelle Woods 746-8873	Victor Rose, Ethel Krause,
		Betty Gorman, Sharron McAvoy
Librarian	Veretta Weiland 746-3811	Herman Weiland, Isabelle Woods
Programs	Betty Gorman 868-2807	Carroll Goyne, Jr., Reed Math-
		ews
Publications	Ethel Krause	(See Genie volunteers on Table
		of Contents Page)
Historian	Louise Pratt 868-4210	
Resale	Dale Jennings 965-9342	
Exchange	James Oliphant 742-8934	
Seminar	Marguerite Loftin 746-4598	Victor Rose, Chris Oliver
		Ethel Krause

* * * * *



GREEN GROVE MISSIONARY BAPTIST CHURCH CEMETERY
OLD BONITA ROAD
BONITA, LOUISIANA 71220

The Green Grove Missionary Baptist Church Cemetery is a cemetery of African-American burials.

According to a plaque on one of the church's walls, this church was organized in April, 1888 and rebuilt in 1988 by its membership.

This church is reached from Interstate 20. Exit on Highway 165 North through Monroe, Bastrop, and Mer Rouge, Louisiana. At the Village of Bonita, LA, turn left at Highway 140 (Old Bonita Road). The Cemetery is 4.5 miles on Louisiana Highway 140 (Old Bonita Road).

Data researched and recorded as read on June 9, and 19, 1995, by Isabelle M. Woods, 2016 Surrey Lane, Bossier City, Louisiana.

Sources: (FP) = Funeral Program; N= Newspaper Article; (HSI) = Headstone Inscription; (?) = Illegible or Not Shown, (CJH) = Reverend Cleveland J. Holmes, Pastor, Green Grove Missionary Baptist Church.

In **Part I**, dates without symbols were obtained from the headstone, metal marker, or other gravesite marker on site. In **Part II**, dates are from the decedent's funeral program or a newspaper article.

PART I

<u>DECEDENT</u>	<u>BIRTH</u>	-	<u>DEATH</u>
MITCHELL, Lacey	Jun 26, 1919	-	Feb 17, 1989
(HSI) Pvt U. S. Army World War II			
ALEXANDER, Wilmer	Dec 25, 1915	-	Jun 27, 1994
COLEMAN, Phinnie	Aug ?. 1896	-	Nov 9, 1990
ALEXANDER, Lillie Mae	Oct 10, 1926	-	Mar 29, 1987
SANDERS, Mrs. Mary	Jan 29, 1909	-	Dec 19, 1994
(FP) Parents: Fred and Sarah Montgomery			
(FP) Spouse: Married Joe Sanders on October 16, 1925			
MITCHELL, Mrs. Vera (?)	Dec 16, 1944	-	Aug 8, 1991
HARRIS, Josh	Dec 11, 1902	-	Jul 18, 1969
THORNE, Reola	Feb 23, 1918	-	Nov 29, 1991
HIGGINS, Mack	?	-	?
(CJH) In largest fenced area, middle of cemetery			
HIGGINS, Ella	?	-	?
(CJH) In largest fenced area, middle of cemetery with Mack Higgins.			
(CJH) Her maiden name is "Carter."			
JONES, Annie J.	Dec 16, 1897		

DECEDENTBIRTH - DEATH

HICKS, Ella Mae	Jul 6, 1897	- Sep 10, 1962
WILSON, Rev. Frank F.	1872	- 1961
WILSON, Lee Annah Haynes	Dec 27, 1874	- May 23, 1953
FAULKNER, Eugene	Jul 30, 1918	- Nov 5, 1950

(HSI) Washington PFC 578 Ord Ammo Co World War II

PART II

ALEXANDER, Larry (FP) Feb 29, 1964 - Dec 18, 1982
(FP) Parents: Mr. and Mrs. Wilmer Alexander

MAIDEN NAME SOURCES

"Deeds are a good source for maiden names. In the lower left hand corner of most deeds, are signatures of from two to four witnesses. The first one is always from the husband's side. The next witness is from the wife's side. That is to protect her...dower¹ right under the law...."

"Mortgages are another valuable source. In the 1800's and before...when the daughter got married, as a part of her dowry¹, the father ... either cover(ed) the loan or carr(ied) the note for his son-in-law. If you know the husband's name, but not the wife's maiden name, find out to whom they are making their mortgage payment. About 70% of the time, it will be the bride's father."

Source: Minnesota Genealogical Society
And Reprinted in: Louisiana Genealogical Register, Vol 39, No. 1, March 1992

¹ Dower - a widow's life interest in a third part of the lands and tenements of which her deceased husband was seized² during the marriage.

² Seizen - the possession of real property as of right, or by reason of a chain of title, formerly a seizen indicated a freehold estate.

Source: Kern-Gen, Volume XII, Number 4, Volume XIII, Numbers 1, 2, and 3.
Reprinted in: THE GENEALOGICAL HELPER, May-June 1977, Page 239

JOHANN JORG FEAZEL

Ouachita Territory, Louisiana

Johann Jorg/George Feazel, son of Elizabeth and Michael Feazel, settled in the vicinity of Downsville, Louisiana on the edge of what is now known as Lincoln Parish, Louisiana. This was part of the Ouachita Territory.

The Texas History Center has provided me with information dated July 10, 1833, and signed by Oliver Morgan, Parish Judge of Ouachita in the State of Louisiana and also J. H. Overton, Judge 7th District of the State of Louisiana. It reads:

Mr. George Feazle the bearer has been an inhabitant of this parish for about twenty two years and has conducted himself as an honest industrial citizen.

Mr. Feazel being about to visit the Providence of Texas for the purpose of making arrangements to move his family. I therefore recommend Mr. Feazel as a good industrious farmer and deserving the patronage of the government of the said Providence.

I am with due respect

Oliver Morgan
Parish Judge of
Ouachita in the
State of Louisiana

July 10, 1833

J. H. Overton
Judge 7th District of
the State of Louisiana

When Johann Jorg/George Feazel arrived in Texas he sent word back home that his letter of recommendation was put in the hands of Mr. Stephen F. Austin. Mr. Austin had gone to Mexico to obtain ratification in March to obtain ratification from the Mexican authorities of a plan to secure the admission of Texas into the Mexican Confederacy. Unable to obtain prompt action, he wrote the Texans from Mexico City, advising them to proceed without official consent. For this act, he was put in prison by the Mexicans. Being of true pioneer spirit, George Feazel set out for Mexico to free Mr. Austin. He never returned. It appears that he may have been killed by the Mexicans or Indians. Perhaps the trip was hard and he just died. I do not know what happened to George, but he was never seen or heard from after this date.

This Johann Jorg/George was a chain carrier (sic: land surveyor) by trade. He arrived in Louisiana about 1811 and settled in the land that was full of wild life and ideal for trade. He had only Indians for neighbors. Legend has it that the Feazel's settled in Louisiana so early that one of the women was killed by the Indians.

One day, about 1814, John Honeycutt, a trapper, heard from the Indians that an old settler by the name of George Feazel "with a house full of girls", was living in the area. He eked his way through the wilderness and boldly asked for the hand of one of the girls in marriage. Grandfather lined up his daughters and John Honeycutt, pioneer hunter and trapper, and Union

Parish's first settler was reported to say "I'll take this 'un!".

George Feazel settled with his wife Margaret Pear in the vicinity of Downsville, of what is now Lincoln Parish. He was a son of Michael Phaezell, a German emigrant, who settled in the Shenandoah Valley in Virginia and supplied beef to the Continental troops during the Revolutionary War. Margaret was the daughter of Phillip Pear, who died in 1799.

The family first settled in Tennessee, where my ancestor John O. Feazel was born. He married Christiana Ferguson, a daughter of John Ferguson, who served in the Revolutionary War. A daughter, Catherine Feazel married Bayliss Bagwell, who had migrated from Alabama and served in the Confederate Army.

The eldest son of John Feazel was Lewis Feazel, the father of Rebecca Belmira Feazel, who married Marcelleous Allen Gresham. Marcelleous was the son of Sarah Hammack and William Thornton Gresham, who came to Louisiana with the railroad after the 1880 census.

W. C. Feazel, oil and gas operator in Louisiana and a member of the State Legislature and the United States Senate was descended from Phillip Feazel, the eldest son of Margaret Pear and George Feazel.

(This information was taken from the Ruston Daily Leader and the History of Farmerville. My mother is a great-granddaughter of Catherine and Bayliss Bagwell. My father is a son of Rebecca Belmira Feazel and Marcelleous Allen Gresham. Submitted by Sherry Gresham Gritzbaugh, 4507 Verone, Bellaire, TX 77401-5513. See articles by Sherry in Volume 31, Third Quarter 1997. ED)

* * * * *

MARY ANN CLARISSA WISE & MICHAEL FEAZEL

(Submitted by Sherry Gritzbaugh)

The eldest child of Susannah Ferguson and Jesse Wise was Mary Ann Clarissa, who was born in Amite County, Mississippi on the 14th day of August, 1813. She died in Union Parish, Louisiana on the 12th day of August, 1890. She was married but once to Michael Feazel, the sixth child of Margaret Pear and George Feazel. Michael was born on the 7th day of June 1805, in the Shenandoah Valley of Virginia, and departed this life on the 12th day of April, 1881. According to their family Bible, they were the parents of eleven children, namely:

1. Margaret Ann Feazel, who was born 9 June, 1831 in Union Parish, Louisiana and died in 1910. She was married twice, first to George Washington Bagwell and second to Garrett "Red" Jones. She had children only by her first husband. George Bagwell was a son of Parthenia "Pathy" Bayless and Flurney O. Bagwell. George was born about 1830 in Perry County, Alabama. They were the parents of three children: Shelby D., Loucinda, who married Louis Redden, and George Washington Bagwell, Jr.
2. Martha E. Feazel was born 16 May 1813 and departed this life on the 23rd day of September 1836. She is interred in the old Feazel Cemetery near her parents in an unmarked grave.
3. Francis Marion Feazel was born 9 July 1835 in Union Parish, Louisiana, and as a Confederate Soldier, died in the Monroe Military Hospital on the 23rd day of August 1862. He was also buried in the old Feazel Cemetery in the D'Arbonne Community in an unmarked grave. In 1856, he was married to Theresa Melvine Pardue, a daughter of Caroline Skains and Melvine Pardue. They were the parents of Francis Irwin and Vircia Feazel.

4. Benjamin Franklin Feazel was born on the 1st day of October 1837, and departed this life on the 19th day of September 1898. He died and is buried in the State of Texas. His first marriage was to Rebecca Belmira Henderson on the 25th day of April 1868 in Union Parish, Louisiana. She was a daughter of Nancy Cox and Lewis Henderson. Rebecca was born about 1837 in Clarke Co., Alabama, and departed this life about 1874 in Union Parish, Louisiana. They were the parents of two children: Cisley P., and Missouri N. Feazel. The second marriage of Benjamin Franklin Feazel was to Mrs. Amanda Fitzsallie nee McLean (or McClain), a daughter of Sarah Bush and Alfred McLean. By the second wife, Benjamin was the father of eight children: William Lafayette, Clarissa Clark, Thomas Hartwell, Joseph Marion, Benjamin Arthur, Robert Mitchell and two who did not survive. Benjamin and Amanda are buried in the College Hill Cemetery in Bowie County, Texas.

5. Mitchell Cornelia Feazel was born on the 29th day of December 1839, and departed this life on the 3rd day of December 1916, and is interred in a marked grave in the old Feazel Cemetery. His grave once stood very tall, and had a lovely design of oak and ivy leaves on the tomb. Today, only the bottom portion of the tomb remains. He first married Margaret Ann Bearden, who was born in 1850 and died 15 August 1874. They were the parents of Molly Melissa (Mary) and Ella Feazel. After died, he married Louisa Graves on the 5th day of December 1877. She is buried by his side. Louisa was born 4 December 1854 and died on the 15th day of December 1890. Supposedly died of typhoid fever. She was the mother of Franklin Pierce, Addie Pearl, William Mitchell, Grover Cleveland, Jesse Frank and Birdie Louise Feazel. After Louise Graves Feazel died, Mitchell married a third time to Eliza A. Johnson, who was born 21 January 1857 and died 21 March 1931. She is buried in the Mt. Tabor Cemetery in an unmarked grave. The compiler has no record of any children having been born to the third wife.

6. David Feazel was born on the 29th day of January 1842 in Union Parish, Louisiana and departed this life on or about the 26th day of November 1862, a fatality of the Civil War. He never married.

7. Susannah Ann Feazel, commonly known as Susan A., was born the 1st of April 1844 and departed this life on the 12th day of November 1920, and was interred in the Sardis Baptist Church Cemetery beside her husband William B. "Buck" Craighead, who was born around 1835 and died in 1918. His monument provided by the State of Louisiana, indicated he served in Co. H, 28th LA Infantry, CSA, but has no dates. Susannah was the mother of seven children: Mary A., Clara, David Luther, Jennetta, Benjamin, Martha Missouri, called "Zudie" and George Andrew Craighead.

8. Gilbert Lafayette "Fate" Feazel was born 10 July 1846 in Union Parish, Louisiana. He departed this life in Dekalb, Bowie County, Texas on the 2nd day of September 1934. He married Missouri Ann Austin, a daughter of Louisa Henderson and Willis Austin. Missouri was born 27 January 1849, and died 1 April 1880. They were the parents of four children: Eugene Francis, Sarah Ann, Jessie Willis and Michael Lafayette Feazel. They left descendants in Bowie County, Texas.

9. Wilehlmenia Ann Cornelia Feazel, also known as Willie Elmer, was born 15 Jul 1849, and departed this life on the 21st day of October 1908. The name entered in the family Bible was Wilhelminia Ann Cornelia. She was born and died in Union Parish, Louisiana. She married John Edman Thomas in Union Parish, Louisiana between 1867 and 1869. It is unknown who his

parents were. His mother was reputed to have remarried to a Mr. Welch and he had half-sisters, Madeline Welch, wife of Benjamin Wall of Minden, Louisiana and Anna Welch, wife of Dr. Smith of Hope, Arkansas. There may have been a half-brother, named James Welch. The compiler would appreciate any information on John Thomas and his family. The census states that John Thomas was born in the State of Louisiana. On February 11, 1982, the following was published in the morning paper under "What's Your Line" by Coleman Crosby - Willie Elmer Feazel was married about 1867 to John Edman Thomas, a native of England, who was born 27 June 1850 and died 28 December 1898, in the home of Joe Shaw in Union Parish. He is reputed to have been stabbed by "Dunc" Austin who took refuge in Texas, but was captured and tried and sentenced. John Edman and Willie Elmer Feazel Thomas had seven children: Callie Clarissa, Gertrude, Mary Elizabeth, Isabella Rosiana, Lou Della, Jessie O'Minnie, called "Jettie" and Bertha Elma Thomas.

10. Mary Ann Feazel was born 16 Apr 1852 and departed this life on the 20th day of August 1925. She was the second wife of Marion Franklin Carey. They were married 21 November 1880 in Union Parish, Louisiana. They had two children: Sada Carey, who was born 16 October 1882 in Union Parish and gave ten thousand dollars to Louisiana Tech in 1979 to assist agriculture, pre-medical or home economics students. She never married. The second child was Victor Frank Carey, who was a medical doctor, b 27 February 1886. The first wife of Marion Franklin Carey and their son were buried in the Old Feazel Cemetery. Marion Franklin and Mary Ann are buried in the Downsville Cemetery in Union Parish, LA.

11. Un-named female, who was born and died 1 August 1855 in Union Parish, Louisiana. Also interred in Old Feazel Cemetery.

* * * * *

WILHELMINIA ANN CORNELIA FEAZEL & JOHN EDMAN THOMAS

(See information above) Their children were as follows;

1. Callie Clarissa Thomas born 22 December 1870 in Union Parish, LA, died 23 March 1942 in Dubach, Lincoln Parish, LA. She was married to Robert Jefferson Bagwell, born 25 May 1860, died 27 March 1912. He was the second son of Catherine Feazel and Bayless Bagwell. Robert Jefferson "Jeff" and Callie Bagwell were interred in the Fellowship Baptist Church Cemetery, which is located near Dubach on Hwy 151 in Lincoln Parish, LA. They were the parents of thirteen children.

2. Gertrude Thomas was born about 1871, and died accidentally when she was about ten years old. She is buried next to her parents in the Sardis Cemetery in Union Parish, LA.

3. Mary Elizabeth "Lizzie" Thomas was born 20 December 1872 and died in March 1937. Her first husband was James O. "Jim" Dumas. They were married 10 March 1895 and divorced before the 1900 census, when she was living in the home of her mother. She and Jim were the parents of one child, Genie "Jennie", who married John Willie Wilson. Mary Elizabeth's second husband was John Wilson, who was born 29 June 1856 in Rockford, Alabama, the son of Martha Davis and Jim Wilson. He was previously married to Amanda Joiner. Two children were born to "Lizzie" and John: (1) Eunice, who first married Stillman Antley, and second married Beford F. Cornwell. (2) Palmer Holmes Wilson who married Cena Bearden, a daughter of Bertha Myra Redden and Thornton Bearden.

4. Isabella Rosiana Thomas was born 4 February 1878. She was married to James Fielding "Jim" Rea/Ray, son of Margaret Edwards and Theopholiust H. Rea/Ray. Isabella died in Mer Rouge, Morehouse Parish, LA on 11 November 1943. She and Jim were married in Union Parish on 15 July 1894. Jim was born near Selma, Bibb Co., AL on 8 December 1872 and died in Bonita, Union Parish, LA on the 12th day of July 1955. They were the parents of ten children: Millie Evie, Annie Lee, Forest Edward, James Fielding, Jr., Un-named male child, Beulah Verice, Reasie Elzie, Myrtle Mae, Jettie Dora and James Burney Rea/Ray.

5. Lou Della Thomas (or Eudella) was born 12 September 1880 and died 9 October 1966. She married on 23 September 1897 in Union Parish, LA to William "Poley or Perry) McDaniel, a son of William Polee and Allie Mae Grafton McDaniel. When the 1900 census was taken, she was living in the home of her mother. Her husband was not in residence. William P. McDaniel was born 19 August 1879 and died 9 October 1966 in Tannehill, Winn Parish, LA. Both were buried in the Zion Hill Cemetery in Winn Parish, LA. They were the parents of eight children: Viola Gladys, John Thomas, William Ripoland "Poley", Un-named twins, another un-named infant, and twins Allie Mae McDaniel and Udella "Dell" McDaniel.

6. Jessie O'Minnie Thomas was born 30 April 1893 in Union Parish, LA. She died in Delhi, LA on the 2nd day of October 1959. She was twice married, but had children only by her first husband, Frank Otis Deal, a son of Fannie Walton and Andrew Jackson Deal. Frank Otis was born 7 September 1880 in Farmer-ville, LA and died 11 October 1932. Both were buried in the Masonic Cemetery in Delhi, LA. Jessie married second to Don P. Brady, who was buried in Baskin, LA. Jessie and Frank Otis Deal were the parents of: Johnny Deal, Fannie Elmer Deal, Beatrice Octavia Deal, Andrew Jackson Deal and Frank Edman Deal.

7. Bertha Elmer Thomas was born 31 October 1888 in Union Parish, LA, and died 25 Jun 1969. She was married to Robert Earl Simpson, a son of Josephine Bryant and John Russell Simpson. Robert Earl was born 13 October 1880 in Downs-ville, Union Parish, LA and died 7 Mar 1959. He and Bertha are interred in the Evergreen Baptist Church Cemetery near Bernice, Union Parish, LA. They were the parents of ten children: Aubrey C., Earl Thomas, Willier T., Clovis, Letha O., Robert Chester, James Edwin "Tip", Arlis, Iris Faye and Betty Jo Simpson. (Susannah Wise, Margaret, George, Mary Ann and Michael Feazel were all interred in the Old Feazel Cemetery located on the edge of Lincoln Parish, and Union Parish, Louisiana. The old markers have been destroyed and the graves are now unmarked.)

* * * * *



JOHN SMITH CARLTON AND SALETTA SCARBOROUGH

John Smith Carlton was born on June 22, 1823. He was the final child of John Carlton of Wilkes County, North Carolina and his second wife, Susanna Smith.

Around 1832, when John Smith Carlton was a boy, he left Wilkes County, North Carolina and moved to Elberton, Elbert County, Georgia, with his brother Henry. Their half brother, Thomas, may also have traveled with them but Thomas settled in Jackson County, Alabama.

Around 1849 John and Henry moved again. They apparently spent some time with their half-brother Thomas' family in Alabama, then went on to Minden, Claiborne Parish, Louisiana with Thomas' son, Lewis Carlton.

Henry Carlton and his wife Mary Eads¹ stayed in Minden, where he had a livery stable. He studied law and by 1851 was serving as an attorney. In 1858 Henry and his family moved to Shreveport, where he died in 1862. His family lost track of my Carlton branch after John Smith Carlton's widow and children moved to Texas.

John Smith Carlton seems to have settled on a farm just east of Minden. On November 19, 1851 John Smith Carlton purchased 40 acres of land in Section 19, Township 19 North, Range 8 West in Claiborne Parish.

John and Henry's nephew Lewis stayed in Minden for a while, helping in Henry's livery stable, but by 1850 he was in Cass County, Texas. By 1852 Lewis was back in Bienville Parish, Louisiana, where he married Louisiana Caroline Dozier. After her death he married Emaline Cowling and eventually settled in Lafayette County, Arkansas.

Saletta Scarborough was born around 1826 in Arkansas according to the 1850 Federal Census. In the 1900 Federal Census, her son John Henry said she was from Georgia. The parents of Saletta are still a mystery, although evidence suggests she may be a granddaughter of James Scarborough of Edgecombe County, North Carolina. Family tradition says that this man was married five different times and had twenty-five children. Evidence suggests that some of James' children were Lawrence, Allen, Noah, Jonathan, David, Simeon, William, Lemuel, Zillah, Isaac, John Rasberry, and Polly Palmer. Several members of this family moved from North Carolina to Georgia, Mississippi, northwest Louisiana, Union County, Arkansas and Bell County, Texas. Saletta and John Smith Carlton were living in northwest Louisiana and Saletta later lived in Texas at the same time as this group of Scarborougs. A possible clue is in Saletta's great granddaughter Zena Luce's marriage license. Although Zena was married in northwest Arkansas, she was married by a preacher from Union County, Arkansas, which is in the southern part of the state. Could the preacher have been a

¹Mary Eads was the widow of James Burch

relative? Another possible clue is the fact that at least one member of this Scarborough family was a minister, probably for the same denomination of Christian Church as Saletta's son John Henry Carlton.

Around 1852 John Smith Carlton married Saletta Scarborough, probably in Louisiana.

John seems to have been active in the community, serving on juries in 1850, 1855, 1856 and in 1857.

In 1856 John Smith Carlton bought 10 acres on the north side of the northeast 1/4 of the northwest 1/4 of Section 16, Township 19 North, Range 5 West.

The family was listed in the 1860 Federal Census of Ward 6 in Claiborne Parish. This record lists J.S. Carlton, "Sleta", 4 year old J.H. (John Henry)²; 2 year old W.S. (William); and 3 month old M.R. (Mary R. or Mollie). Their final child, Cornelia (or Melony), was not born until around 1862.

John Smith Carlton fought on the Confederate side during the Civil War. He enlisted on January 3, 1863 at Monroe, Louisiana. He served in Company G, 28th Regiment, Louisiana Infantry and later transferred to Company 4 of this Regiment.

For his service, John Smith Carlton most likely received bounty land in Claiborne Parish near Vienna, which he farmed. This land was part of his estate that was sold after 1873. The 200 acre estate was located in Section 10, Township 18, Range 4W.

After John Smith Carlton died around 1873, his family moved to Texas. Mrs. Saletta Carlton paid taxes in Bell County, Texas in 1874 and 1875. John and Saletta's children John Henry, Mollie, and Melony were living in Bell County, Texas by 1876. Mollie married William Stroud on September 19, 1876 and Melony married John T. Urban on October 26, 1876. John Henry married Sarah Elizabeth Hillyard on June 7, 1877, all in Bell County. John and Saletta's son William also supposedly moved to Texas but no record has been found of him.

By the time the 1880 Federal Census was recorded in Bell County, Texas, Mrs. Saletta Carlton was not listed. She most likely died in Bell County between 1875 and 1880. Her daughter Melony was living with her husband, John T. Urban and her 2 year old son, Clarence. Mollie was living with her husband William Stroud and their 2 year old daughter Nellie and baby William. Saletta's sons William and John Henry were not found. John Henry probably lived in the Little River Community near the Bell and Milam County lines.

(Submitted by Ann Hall McGuffey, 1102 Wellington Dr., Duncanville, TX 75137.)

²born March 13, 1856 according to his Family Bible or March 20, 1856 according to his tombstone.

Name of Compiler Julia L. Douglas
Address 139 E. Lister St.,
City, State Shreveport, LA
Date 27 Oct 1997

Ancestor Chart

Person No. 1 on this chart is the same
person as No. _____ on chart No. _____

Chart No. _____

b. Date of Birth
p.b. Place of Birth
m. Date of Marriage
d. Date of Death
p.d. Place of Death

4 Alfonso Buchanan Douglas

(Father of No. 2)

b. 7 Mar 1859

p.b. LA

m. 30 Sep 1887

d. 22 Mar 1936

p.d. Sugar Land, Ft. Bend Co., TX

2 Ade Jack Douglas

(Father of No. 1)

b. 11 Aug 1895

p.b. Fall Co., TX

m. 14 Apr 1926

d. 4 Sep 1980

p.d. Shreveport, Caddo Par., LA

5 Julia Estelle Cross

(Mother of No. 2)

b. 16 Jan 1872

p.b. TX

d. 2 Oct 1920

p.d. Sugar Land, Ft. Bend Co., TX

1 Julia Lee Douglas

b. 9 Jul 1928

p.b. Glendale, Maricopa Co., AZ

m.

d.

p.d.

6 Benjamin Franklin McKenzie

(Father of No. 3)

b. 1 Nov 1849

p.b. AR

m. 14 Apr 1887

d. 4 Jun 1911

p.d. Smackover, Union Co., AR

3 Emma Lee McKenzie

(Mother of No. 1)

b. 3 Jan 1890

p.b. Ouachita Co., AR

d. 29 Nov 1974

p.d. Shreveport, Caddo Par., LA

7 Martha Frances Neely

(Mother of No. 3)

b. 18 Aug 1865

p.b. AR

d. 20 Jul 1905

p.d. AR

(Spouse of No. 1)

b. d.
p.b. p.d.

8 Green Campbell Douglas

(Father of No. 4)

b. 6 May 1817

TN

p.b.

m. 24 Feb 1842

d. 28 Sep 1877

p.d. Falls Co., TX

9 Isabel S. Perkins

(Mother of No. 4)

b. 6 May 1825

p.b. TN

d. 6 Oct 1903

p.d. Mart, McLennan Co., TX

10 James Dimmitt Cross

(Father of No. 5)

b. 21 Mar 1835

p.b. TN

m. 4 Dec 1853

d. 21 Oct 1919

p.d. Dayton, Liberty Co., TX

11 Julia Ann Parton

(Mother of No. 5)

b. 15 Feb 1838

p.b. GA

d. 30 Nov 1920

p.d. Dayton, Liberty Co., TX

12 Anthony McKenzie

(Father of No. 6)

b. ca 1820

p.b. GA

m. 12 Jul 1841

d.

p.d. AR

13 Minerva Norris

(Mother of No. 6)

b. ca 1822

p.b. SC

d.

p.d.

14 James H. Neely

(Father of No. 7)

b. 17 Feb 1828

p.b.

m. 18 Jan 1854

d. 25 Nov 1881

p.d. Ouachita Co., AR

15 Elenor M. Boyd

(Mother of No. 7)

b. 24 Feb 1838

p.b. AL

d. 11 Mar 1908

p.d. Ouachita Co., AR

16

b. (Father of No. 8,
Cont. on chart No. _____)

m.

d.

17

b. (Mother of No. 8,
Cont. on chart No. _____)

d.

18 James D. Perkins

b. ca 1787 (Father of No. 9,
Cont. on chart No. _____)

m.

d.

19 Sarah McManus

b. (Mother of No. 9,
Cont. on chart No. _____)

d.

Aug 1865

20 William D. Cross

b. 1 Nov 1797 (Father of No. 10,
Cont. on chart No. _____)

m. 1 Feb 1821

d. 11 Mar 1875

21

b. (Mother of No. 10,
Cont. on chart No. _____)

d.

22

b. (Father of No. 11,
Cont. on chart No. _____)

m.

d.

23

b. (Mother of No. 11,
Cont. on chart No. _____)

d.

24 William Carson McKenzie

b. 1796 (Father of No. 12,
Cont. on chart No. _____)

m.

d.

22 Feb 1875

25

b. (Mother of No. 12,
Cont. on chart No. _____)

d.

26

b. (Father of No. 13,
Cont. on chart No. _____)

m.

d.

27

b. (Mother of No. 13,
Cont. on chart No. _____)

d.

28

b. (Father of No. 14,
Cont. on chart No. _____)

m.

d.

29

b. (Mother of No. 14,
Cont. on chart No. _____)

d.

30

b. (Father of No. 15,
Cont. on chart No. _____)

m.

d.

31

b. (Mother of No. 15,
Cont. on chart No. _____)

d.

MOORE-COBB AHNENTAFEL

(Submitted by Michael Edward Moore, Rt. 1, Box 186, Apt 1, Coushatta, LA 71019-9801)

1. MOORE, Michael Edward b 2 Jan 1962, Shreveport, Caddo Parish, LA.
2. MOORE, John Curtis b 18 Sep 1922, Poteau, LeFlore Co., OK, m 27 Nov 1947, Bossier City, Bossier Parish, LA to
3. COBB, Alma Ruth b 20 Nov 1928, Coushatta, Red River Parish, LA.
4. MOORE, Henry Carter b 13 Dec 1886, Charleston, Franklin Co., AR, d 30 Dec 1970, Shreveport, Caddo Par., LA. Int. Monroe, LeFlore Co., OK, Int. Monroe Cemetery, m 1908, Hartford, Sebastian Co., AR to
5. BAKER, Bonnie Ava b 16 Sep 1884, Hartford, Sebastian Co., AR, d 15 Nov 1967, Poteau, LeFlore Co., OK. Int. Monroe, AR in Monroe Cemetery.
6. COBB, William Orion b 7 Jan 1895, Cullman, Cullman Co., AL (?), d 28 Jun 1950, Shreveport, Caddo Par., LA, m 1920, Cullman, AL (?) to
7. GIBBS, Lo Duskie b 25 Aug 1893, Cullman, Cullman Co., AL (?), d 15 Jan 1966, Shreveport, Caddo Par., LA, Int. Centuries Memorial. m (1) McCARTHY.
8. MOORE, John Calvin b 7 Apr 1847, d 5 Nov 1909, Ozark, Franklin Co., AR. Int. Highland Cemetery, m to
9. HEAD, Elizabeth Catherine b 5 Jun 1856, d 19 Nov 1935, Ozark, Franklin Co., AR. Int. Highland Cemetery.
10. BAKER, Pleasant Madison b 28 Oct 1853, Crooked Creek, AR, 17 Apr 1930. Hartford, Sebastian Co., AR. Int. Hartford Cemetery, m 1879, Boone Co., AR to
11. DESHAZO, Elizabeth Kindness b 24 Dec 1859, TN, d 14 Jul 1932, Shawnee, Pottawatomie Co., OK. Int. Hartford, Sebastian Co., AR, Hartford Cemetery. M 1 in 1895 to John BIRCH.
12. COBB, John Samuel b 22 Jan 1869, d 15 Feb 1949, Mt. Pleasant, Titus Co., TX. Int. Hickory Hill Cemetery, m to
13. GLENN, Willie Ethel b 1873, d 1947, Mt. Pleasant, Titus Co., TX. Int. Hickory Hill Cemetery.
14. GIBBS m to
15. STARNES, Sally Luella.
20. BAKER, John TWITTY b 1805, Ky, d 11 Sep 1857, Mountain Meadows, UT, m 1828 to
21. ASHBY, Mary A. b ca 1813, AL, d 1880, Hartford, Sebastian Co., AR.
22. DESHAZO, Allen Clem b 1820, Hickman, Smith Co., TN, d 1880, Pope Co., AR, m ca 1844 to
23. ESTERS, Theodocia B. b 1827, d 1863, Webster Co., MO.
30. STARNES m to
31. HILL, Arbell.
40. BAKER, William S. b 1775, Guilford Co., NC, d 18 May 1861, New Market, Madison Co., AL, m 20 Jan 1801, Jefferson Co., TN to
41. EDWARDS, Hannah C. b 5 Dec 1768, NC, d 23 Jun 1872, Madison Co., AL.
46. DESHAZO, Clem Bennett b ca 1776, King & Queen Co., VA, d ca 1856, Hardeman Co., TN, m (1) ca 1799 in NC to _____, Mary b ca 1784, d ca 1830, TN, m (2) ca 1835 to
47. HOBBS, Martha Ann b 1813, TN, d 12 Apr 1861
82. EDWARDS, Henry.
92. DESHAZO, Richard b 1734, King & Queen Co., VA, d 1814, Person Co., NC, m ca 1758 in King & Queen Co., VA to
93. _____, Sarah b ca 1740, King & Queen Co., VA, d 1800-1810, Person Co., NC.

(Continued on P. 36)



BOOK REVIEWS

By Herman Weiland

DONATED TO SHREVE MEMORIAL LIBRARY by Patty B. Myers

TITLE: CARGILL/CARGILE/CARGAL OF THE SOUTH AND SOUTHWEST compiled by Patty B. Myers.

ORDER FROM: Patty B. Myers, 15 Campden Circle, San Antonio, TX 78218-6053.

COST: \$42.00 postpaid

This book chronicles the descendants of Corneliue Cargill of Virginia, John Cargill/Cargile of Virginia and North Carolina, John Cargill/Cargile of Virginia and Georgia, and the brothers Andrew J. and John Cargal of South Carolina and Georgia. These families moved across the southern part of the country with many of them living in the Arkansas Counties of Fulton, Sharp, Claiborne and Caddo, and several counties in Texas. If you have Cargill/Cargile/Cargal in your family research, you will want to check out this book. 1997, 6 x 9, 738 pp, illust, indexed, hardbound.

* * * * *

DONATED TO SHREVE MEMORIAL LIBRARY by Col. Benjamin S. Silver

TITLE: OUR SILVER HERITAGE by Benjamin S. Silver.

ORDER FROM: Col. Benjamin S. Silver, 123 N. 30th St., Gatesville, TX 76528.

COST: \$40.00 postpaid.

OUR SILVER HERITAGE, Vol. I, was published in 1979, and a copy placed in the Shreve Memorial Library. Since that time there has been much information discovered that need publishing. This is actually corrections and addendum to Vol I, but also includes Vol II, covering the New Jersey SILVER's and Vol III covering the Scotland SILVER's. It has 300 pages of corrections and additions including narrative, pictures, family group sheets, maps and much more. If you have SILVER's in your line this is worth the purchase price. If you already hold Vol I then you will want to purchase this additional material to complete your book. 1997, 8½ x 11, 300 pp, index addendum to include new names in these pages.

* * * * *

DONATED TO SHREVE MEMORIAL LIBRARY by Sherry Gritzbaugh.

TITLE: BAYLES/BAYLESS by Margaret Ellis Sepello.

This book is not for sale, but the author has given permission to copy.

The emmigrant, John Bayles, arrived in Boston in 1635 and was in Long Island

(Continued on P. 36)

+

QUERIES

By Isabelle Woods

BIRGE
CLARKE
KOCH
JULIAN
SCOTT

Seek burial sites of my husband's great-grandparents, John JULIAN (f. Samuel JULIAN of NC, GA) and Nancy SCOTT BIRGE (f. William BIRGE). They were last found in Saltillo, MS where John's grandmother, Rebecca Cornelia JULIAN, was born in 1854. Other children: 1 sister and 2 brothers. None are listed in the 1870 Census of MS. They may have moved to the Shreveport, LA, area where Nancy's parents lived. Nathan BIRGE, Nancy's brother, lived in Sherman, TX. Contact: Dott CLARKE KOCH, 10610 NW 22nd Street, Pembroke Pines, FL 33026.

CHINAULT
HARRIS
PREWITT
SHENEP
SHORT
WISE

Need birth, marriage, death, and census (1860, 1870, 1880) data of eastern AR, or any other records on ancestors/descendants/parents/siblings of the WISE family. Parents unknown; children: Fannie, James, William, and Nancy E. WISE (b. 1865, d. 1928; m. Thomas Henry HARRIS in Dec 1879). Is Nancy related to James WISE (b. TX, age 6), and William WISE (age 3, b. TX) found with Fannie WISE SHORT (age 19) and husband, Thomas SHORT (age 26) in the 1870 census of St. Francis Co., AR? In 1870 she was raised by an aunt and uncle, who abandoned Nancy in 1874 outside Jeffersonville, AR, where she was raised by Henry and Celia SHENEP. (Nancy may have lived in Nashville, TN, before or after she left her natural parents.) My mother, Nancy Elizabeth HARRIS CHINAULT, was born in Jeffersonville, AR, where her parents and relatives are buried. She lived in Marianna, AR, and left in 1928 when her mother died. Contact: Jo PREWITT, 2524 East University Avenue, Oxford, MS 38655.

DOAK
MITCHELL
SHARP

Where is book entitled, *The Mitchell-Doak Group*, by (Capt.) Harry E. MITCHELL, copyright 1966? (My DOAK line of descendants were in the States of Virginia, Arkansas, Tennessee, and California). If you know someone who can extract information therefrom or know from where I can obtain this book, write: Janet SHARP, 209 Bellenger Lane, Weatherford, TX 76088-9775.

HENDERSON
NEAL
SEALS

Seek ancestors/descendants of my great-grandparents, Abraham "Abe" SEALS (b. circa 1834, SC; d. unknown) and Fannie HENDERSON (b. circa 1845, AL; d. 17 Mar 1929), m. 11 Feb 1866 in Claiborne Parish, LA. They lived in Homer, LA, until their deaths. Children: Rebecca, Ella, Delia, Garada, Stokes, Lorette, Henry, Ollie, John Loy, and Lay. Fannie was sold from her mother during slavery; her father was a Choctaw Indian. Contact: Carole E. NEAL, 3501 - 35th Avenue #4, Oakland, CA 94619-1343; Ph: 501-531-6533; E-mail: cen@worldnet.att.net.

CALHOUN
WILLIAMS

What is the maiden name of Elizabeth WILLIAMS, wife of John Henry WILLIAMS, a Confederate volunteer in the Civil War who was killed in Yalobusha Co., MS, in 1864? Write: Merrill CALHOUN WILLIAMS, Jr., 23750 Highland Valley Road, Apt. 110, Diamond Bar, CA 91765-1184.

ANDERSON
CARR
GRITZBAUGH
PAYNE
TAYLOR
WOOD

Was Mary WOOD ANDERSON a daughter of Matthew WOOD (and Hannah PAYNE) or of Martin WOOD? Also desire info on Jane WOOD TAYLOR, Sarah WOOD CARR, Thompson WOOD, and Willis WOOD (who m. Talitha ANDERSON). Write: Sherry GRITZBAUGH, 4507 Verone Street, Bellaire, TX 77401.

CORY HAIR HAIRE HAYES MILLS NEWTON STEWART	Need proof of birth and birthplace of my grandfather, William HAYES HAIRE, b. 27 Jan 1892 in Oakdale, LA (or in Desha Co., AR; or in Winchester, AR); d 24 Dec 1973 in Herington, KS; m. Inez CORY STEWART in 1917 (bore 6 children); and of my great-grandparents, James L. HAIR(E) and Fanny May NEWTON (both born in MS and dead by 1903). HAIR(E) families may have lived in Greenville, MS, and/or Paducah, KY. James (and William HAYES HAIRE?) worked for the Rock Island RR from 1917 until the late 1950's. Was there a railroad thru Desha/ Drew Counties in early 1900's? Contact: Leslie MILLS, 45 Belle Avenue, San Anselmo, CA 94960; E-mail: ljm@limbach.com.
JOHNSON MODLING TOWNSEND	Seek ancestors/descendants/siblings of James JOHNSON, Sr., (wife unknown); children: Sarah Jane (1811, ILL. Territory); Francis (1812-1814, ILL. Territory); Lewis; William J. (1819 AR Territory); and James, Jr., (1824-1826 AR Territory). From 1811 to 1860, they were in Claiborne and Bienville Parishes of LA and/or Arkansas Territory. Ann Permelia JOHNSON (dtr of Francis JOHNSON and wife, Elizabeth TOWNSEND), m. Elijah M. MODLING on 9 Mar 1853 in Claiborne Parish, LA. Contact: Christopher G. JOHNSON, Post Office Box 2383 TBR, Milan, MN 87021.
HOLT McCOY SPEAR SPEIR	Seek descendants of the children of Bird Booker SPEAR (SPEIR), Jr., and wife, Julia A. ___, found in Robertson Co., TX--George McCOY (b @1859, GA) and wife, Emma SPEAR (b @1875, LA); son: George, McCOY, Jr. (b @1908, TX); and in E. Baton Rouge Parish, LA--Laurence Bird SPEAR (b @1879, LA) and wife, Anna W. ___? (b @1887 AL); children: Anita L. (b @1913, TX), Iva Ruth (b @1914, TX), Ina E. (b @1918, LA). Who were the husbands of Laurence's daughters? Also need obituary of George McCOY and /or EMMA SPEAR. (Bird Booker's father, William SPEIR, moved in 1801 from Halifax Co., NC, to Anson Co., NC; then in 1821 to Montgomery Co., AL. Family surname later changed to "SPEAR"). Write: Joan HOLT, Adelgade 32, 8660 Skanderborg, Denmark, Europe.
HOLT SPEAR	Desire correspondence with descendants of Peyton M. SPEAR (b@1845, AL; father: Jesse P. SPEAR), and wife Louisa B. ___?(b @1854, LA); children: Eliote (b @1886, LA) and Ernestine (b @1888, LA). Family found in Morehouse Parish, LA, in 1920. Write: Joan HOLT, Adelgade 32, 8660 Skanderborg, Denmark, Europe.
DROUET FILLEUL KILPATRICK MITCHELL	Desire ancestral or descendant info on these New Orleans residents: Edward DROUET (1792-18??), Edward FILLEUL (1821-1876), and Douglas MITCHELL KILPATRICK (1844 -1905). Contact: Tom KILPATRICK, 1723 Huntington Avenue, Oklahoma City, OK 73116-5502; Ph: 405-843-4947; E-mail: kilgroup@aol.com.
CHATHAM JACKSON MALLOY	Seek data on CHATHAM surname in Jackson, Caldwell, Lincoln, and Ouachita Parishes Parishes of Louisiana. Researching descendants of Elijah JACKSON CHATHAM (b 1815 Franklin, GA and moved in 1838 to Jackson Parish, LA); his son, Noah JACKSON CHATHAM (b 22 Jan 1856 in Chatham, LA); his grandson Hays JACKSON CHATHAM (b 3 Feb 1883); and his great grandson Bert MALLOY CHATHAM. Write: Douglas MALLOY CHATHAM, Shalom Hill, 2827 Janet Street, Lithia Springs, GA 30122.
BENNETT DECKER FARMER FORD GEISLER McABEE STEEL WARREN	Will exchange info on Alexander STEEL FORD and Sarah Elizabeth DECKER (who m. 10 Dec 1868 in Waco, McLennan Co., TX). Need more info on several children and their spouses: Daniel WARREN and Lizzie; George Washington FORD; Cora Mae and Gilbert Augustus GEISLER; Riley A. and Willie Bell McABEE; Benjamin Franklin FORD and wives (Is Callie BENNETT FARMER his 1st or 2nd wife?). Contact: Jackie FORD, 2805 Dena Drive, San Angelo, TX; Ph: 915-942-0884.

BANDY Desire info on ancestors and descendants of: (1) Charles Thomas BANDY (b 1856, d 16 Aug 1900, in Eros, Jackson Parish, LA) who m. Frances LOFLIN (b 1859, d 17 Sep 1900, in Eros, Jackson Parish, LA); (2) Lewis CRAWFORD who m. Mattie Luma WHITTLESIE (dtr of Joseph WHITTLESIE); children--Floyd, Norman, Herbert, Earl, Maggie, Averil; formerly of De Soto Parish, LA; AR and TX; and these residents of Bowie Co., TX, or Caddo Parish, LA, during late 1800's: (3) Thomas MAYO who m. Martha Coody MOFFITT; and (4) Joe Ben MAXWELL who m. Clara MILLER. Write: Nancy BISHOP, 10182 S 4 W E, Warren, IN 46792.

BISHOP

CRAWFORD

LOFLIN

MAXWELL

MAYO

MILLER

MOFFITT

WHITTLESIE

GRITZBAUGH Seek info on Miscal WOOD (JAMES) b @1738 St. Mary Co., MD and d 23 Oct 1825 in Granville Co., NC; children: (1) Lelita WOOD, m. #1 Sm. LILES and #2 Mr. STOW @1780 in SC; (2) William WOOD (d 5 Oct 1825) m. Sarah; and (3) Matthew WOOD (b 29 Jul 1791 and d 20 Oct 1855 in Jackson Parish, LA) m. Hannah PAYNE. Write: Sherry GRITZBAUGH, 4507 Verone Street, Bellaire, TX 77401

JAMES

LILES

PAYNE

STOW

WOOD

HOLT Who are the parents of these SPEAR children who married in Natchitoches Parish, LA? Becka SPEAR m. Murt NEWMAN on 21 Oct 1916; Rena SPEAR m. Walker VICKERS on 22 Oct 1916; and Irene SPEAR m. Earl MARTIN on 16 Apr 1927. Write: Joan HOLT, Adelgade 32, 8660 Skanderborg, Denmark, Europe.

MARTIN

NEWMAN

SPEAR

VICKERS

ANDERSON Need proof that Talitha Cumi STOW and Dr. James ANDERSON are the parents of Talitha ANDERSON who m. Willis WOOD and of Henry P. ANDERSON who m. Mary GRITZBAUGH WOOD. Write: Sherry GRESHAM GRITZBAUGH, 4507 Verone Street, Bellaire, TX 77401.

GRESHAM

GRITZBAUGH

STOW

WOOD

BRYAN Need info on ancestors or siblings of William Hiram BRYAN(t), b ca 1875 possibly San Augustine, TX, d 12 Nov 1941, Morehouse Par., LA. M Minnie Eula Hale (b 2 Sep 1878, d 19 Mar 1936) on 4 Nov 1897 in Rapides Par., LA. Ten known ch: Edna, Steve, Betty Lola, Gordon, Pearl, Lucy, Effie, Bessie, Belva and James Madison. Census records from 1900 Jasper Co., TX, 1910 Ouachita Par., LA and 1920 Morehouse Par., LA. Contact: Dinah Davis, 607 Kennon St., Minden, LA 71055. Ph 318-371-1936 or 3-mail rdavis@prysm.net.

BRYANT

HALE

DAVIS

HALE Seeking info on siblings or parents of John Thomas HALE, b 18 Jan 1852, TX, d 5 Feb 1914 in LA. Married Francis Elizabeth Jane KNOX on 24 Dec 1874. Twelve known ch: William Thomas, Minnie Eula, H.E., Alvin N., Louis Howard, Janie Nancie, Christian Lathie "Little Brother", Hugh Miles, Lonnie Lee, Mary and (Zana) Zennie Ethal. Contact: Dinah Davis, 607 Kennon St., Minden, LA 71055. Ph 318-371-1936 or e-mail rdavis@prysm.net.

KNOX

DAVIS

BARNES Looking for info on Benjamin Walter BARNES b 1882, d 1949 in Waldo, AR, and his wife, Rachel Lucinda WILSON b 1885, d 1969 Waldo, AR. He started the first newspaper in Smackover, AR. Contact Kathy BARNES, 4916 Flat Creek, Fort Worth, TX 76179. Ph 817-232-3805.

WILSON

WILLIAMS Looking for info on James WILLIAMS b 1792 NC, d 1863, Malvern,
JOHNSON AR. His wife, Mary COOL JOHNSON b 1800 VA, d 1864, Malvern,
COOL AR. Contact: Kathy Barnes, 4916 Flat Creek, Fort Worth, TX
BARNES 76179.

MILLER Look for info on Charles Jerome MILLER b 1858 MS, d 1899, Web-
OAKLEY ster, AR and wife, Georgianne OAKLEY b 1863 LA, d 1931, Columbia,
BARNES AR. Contact: Kathy BARNES, 4916 Flat Creek, Fort Worth, TX
76179.

SNIDER Need info on Lehre A. SNIDER b 1824 SC, d 1865 Buckner, AR and
BULL wife, Margaret Elizabeth BULL b 1830 SC, d 1894 Buckner, AR.
BARNES Contact: Kathy BARNES, 4916 Flat Creek, Fort Worth, TX 76179.

LEWIS Need info on Joel H. LEWIS, b 1830, LA (Father b NC, mother b
RATTS GA), m in Kaufman Co., TX to Margaret Jane RATTS, b 1845, Kauf-
MORRIS man Co., TX (Her father-Henry RATTS, mother-Elizabeth BECK).
Joel served CSA. He d 18 Feb 1896 of a heart attack while rid-
ing his horse to his home in Springtown, AR. Is he buried in
Fairmont Cemetery in Springtown, AR or somewhere in TX? Need
to know who his parents were. Contact: Glenn H. Morris, RR#1
Box 1055, Watts, OK 74964-9750. Ph 918-723-5722.

* * * * *

(Continued from P. 31)

184. DESHAZO, Robert b 1695, King & Queen Co., VA, m 13 Aug 1716, Middle-
sex Co., VA to
185. NICKOLS, Elizabeth.
370. DESHAZO, Peter b 1660, France, migrated to New Kent, VA ea 1691, d
1705-1719, King & Queen Co., VA.

* * * * *

(Continued from P. 32)

by 1640. Then the family scattered to New Jersey, Maryland, Virginia, and
were in Washington County, TN by 1780. Some of the family came to parishes
in Northern Louisiana and are covered by Sherry Gritzbaugh in the book follow-
ing. 1994, 8½ x 11, 125 pp, not indexed, soft cover.

* * * * *

DONATED TO SHREVE MEMORIAL by Sherry Gritzbaugh.

TITLE: THE BAYLESS FAMILY 1617-1998 by Sherry Gresham Gritzbaugh.

This book is not for sale, but the author has given permission to copy.

The author was born at Bernice in Union Parish, Louisiana. Many of the fami-
lies in this book are from other North Louisiana Parishes. Main family names
included in this book are BAYLESS, GRESHAM, GRITZBAUGH, MOFFETT, ANDRY, DIFF-
ENDERFER, NEFF, GUYTON, STAPLES, BAGWELL, ANDERSON, THOMAS, FEAZEL, LUCAS,
LAKE, RUSCO and STILLWELL. 1997, 8½ x 11, 66 pp, pictures, indexed.

* * * * *

WORLD WAR I DISCHARGE PAPERS

Union Parish, Louisiana
(Continued from Vol. 31, Quarter 1997)

TRAYLOR, Willie A. 1,619,258 White
ADDRESS: Linville, Union Par., LA
INDUCTED: Union Parish, LA Sept 6, 1918 POB: Farmerville, LA DOB: Mch 4/1893
ORGANIZATIONS: 17 Mil Pol Co Camp Beauregard La to disch.
GRADES: Pvt 1cl Nov 1/18 HONORABLY DISCHARGED: Jan 26/19

TRIMBLE, Will 3,865,070 Colored
ADDRESS: Route #3 Box 66, Bernice, Union Par., LA
INDUCTED: Homer, LA Sept 27, 1918 POB: El Dorado, Ark DOB: Jan 28/97
ORGANIZATIONS: 158 Dep Brig to Nov 3/18; 6 Pioneer Inf to disch.
GRADES: Pvt HONORABLY DISCHARGED: Dec 11/18

TUCKER, Benjamin F. 2,923,416 White
ADDRESS: R.F.D. #2, Marion, Union Par., LA
ENLISTED: RA Jackson Bks La Aug 8/18 POB: Marion, LA DOB: 20 4/12 yrs
ORGANIZATIONS: 3 Co New Orleans CAC to Sept 1/18; Jackson Bks Sept Auto Repl
Draft to Oct 13/18; Btry C 64 Arty CAC to disch. GRADES: Pvt
SERVED OVERSEAS: Sept 26/18 to Feb 24/19 HONORABLY DISCHARGED: Apr 4/19

TUCKER, Clarence 1,619,288 White
ADDRESS: Route #2, Farmerville, Union Par., LA
INDUCTED: Farmerville, LA Sept 6, 1918 POB: Farmerville, LA DOB: Feb 27, 1897
ORGANIZATIONS: Co B 5 Inf to Oct 26/18; Co D 147 Engrs to disch.
GRADES: Pvt HONORABLY DISCHARGED: Dec 10, 1918

TUCKER, John Frank 3,035,748 White
ADDRESS: R.F.D. #2 Farmerville, Union Par., LA
INDUCTED: Farmerville, LA Oct 24, 1918 POB: Farmerville, LA DOB: July 2/97
ORGANIZATIONS: CAC to disch. GRADES: Pvt HONORABLY DISCHARGED: Dec 7/18

TUCKER, Marvin A. 1,598,385 White
ADDRESS: Bernice, Union Par., LA
INDUCTED: Farmerville, LA Sept 18, 1917 POB: Cecil, LA DOB: 25 10/12 yrs
ORGANIZATIONS: Co I 347 Inf to Nov 9/17; Co M 156 Inf to July 1/18; Co G
163 Inf to July 11/18; Co F 26 Inf to disch.
GRADES: Pvt 1 class Nov 29/18; Corp Sept 12/19
SERVED OVERSEAS: June 12/18 to Sept 14/19 HONORABLY DISCHARGED: Sept 26/19

TUCKER, Mason M. 2,918, 661 White
ADDRESS: Route #3, Marion, Union Par., LA
INDUCTED: Tyler, TX June 14, 1918 POB: Marion, LA DOB: Dec 4/93
ORGANIZATIONS: F A Camp Jackson SC to discharge GRADES: Pvt
HONORABLY DISCHARGED: Jan 7/19

TUCKER, Odie E. 2,919,239 White
ADDRESS: R.F.D. #2 Box 23, Farmerville, Union Par., LA
INDUCTED: Farmerville, LA July 14, 1918 POB: Farmerville, LA DOB: Mch 7/1896
ORGANIZATIONS: Repr Unit #305 MTC to Nov 6/18; Serv Park Unit #458 to disch.
GRADES: Pvt HONORABLY DISCHARGED: Apr 23, 1919

TURNAGE, Alvin B. 2,918,663 White
ADDRESS: Farmerville, Union Par., LA
INDUCTED: Baton Rouge, LA June 15, 1918 POB: Farmerville, LA DOB: Oct 17/95
ORGANIZATIONS: Tng Det Tulane Univ Cp Martin LA to Aug 20/18; SATC Purdue
Univ West Lafayette Ind. to Oct 14/18; COTS Cp Mac Arthur TX to disch

GRADES: Pvt HONORABLY DISCHARGED: Dec 2/18

TURNER, B. (enjamin) N. 1,619,256 White
ADDRESS: R.F.D. #3 Box 45, Marion, Union Par., LA
INDUCTED: Farmerville, LA Sept 6/18 POB: Marion, LA DOB: Jan 1/1893
ORGANIZATIONS: Co C 5 Inf to disch. GRADES: Pvt HONORABLY DISCHARGED: Nov
16, 1918 SCD 10% disabled

TURNER, Cenious 4,987,943 Colored
ADDRESS: R.F.D. #1 Box 82, Randolph, Union Par., LA
INDUCTED: Norfolk, VA July 18, 1918 POB: Caladonia, Ark DOB: Jan 5, 1896
ORGANIZATIONS: 155 Dep Brig to disch. GRADES: Pvt
HONORABLY DISCHARGED: Dec 17/18

TURNER, Jesse J. 2,919,361 White
ADDRESS: Linville, Union Par., LA
INDUCTED: Farmerville, LA Aug 14, 1918 POB: Linville, LA DOB: Sept 1, 1896
ORGANIZATIONS: 224 F Sig C to Nov 12/18; Co F 13 Dep Bn to disch.
GRADES: Pvt HONORABLY DISCHARGED: Jan 17/19

TURNER, William Thomas 4,468,578 White
ADDRESS: Linville, Union Par., LA
INDUCTED: Ruston, LA Oct 16, 1918 POB: Linville, LA DOB: 20 7/12 yrs
ORGANIZATIONS: SATC La Inst to disch GRADES: Pvt HONORABLY DISCHARGED:
Dec 20/18

USREY, Hake 1,609,104 White
ADDRESS: Laran, Union Par., LA
INDUCTED: Baton Rouge, LA May 28, 1918 POB: Farmerville, LA DOB: May 5/1895
ORGANIZATIONS: Co H 156 Inf to July 25/18; Co M 5 Inf to disch.
GRADES: Pvt HONORABLY DISCHARGED: Mch 31/1919

WAFER, Joe 2,134,402 Colored
ADDRESS: Bernice, Union Par., LA
INDUCTED: Homer, LA Dec 7/17 POB: Lisbon, LA DOB: 24 8/12 yrs
ORGANIZATIONS: 162 Dep Brig to Jan 1/17; Co B 512 Engrs to disch
GRADES: Pvt SERVED OVERSEAS: Apr 7/18 to June 18/19
HONORABLY DISCHARGED: June 28/19

WALKER, John M. 1,598,392 White
ADDRESS: Downsville, Union Par., LA
INDUCTED: Farmerville, LA Sept 18, 1917 POB: Downsville, LA DOB: 22 yrs
ORGANIZATIONS: Co I 347 Inf to Nov 9/19; Co M 156 Inf to Nov 6/18; Co L
161 Inf to Nov 16/18; Co H 128 Inf to disch GRADES: Pvt 1cl Jun 25/18;
Corp Sept 14/18 SERVED OVERSEAS: Aug 22/18 to May 5/19
HONORABLY DISCHARGED: May 25/19

WALKER, Nathan 3,301,477 Colored
ADDRESS: Bernice, Union Par., LA
INDUCTED: Farmerville, LA June 19/18 POB: Homer, LA DOB: 24 3/12 yrs
ORGANIZATIONS: Co A 805 Pion Inf to Nov 7/18; Co L 812 Pion Inf to disch
GRADES: Pvt HONORABLY DISCHARGED: Jan 2/19

WALLACE, Allen 3,301,523 Colored
ADDRESS: Conway, Union Par., LA
INDUCTED: Farmerville, LA June 19/18 POB: Conway, LA DOB: 26 3/12 yrs
ORGANIZATIONS: Co A 805 Pion Inf to Nov 12/18; 153 Dep Brig to disch
GRADES: Pvt HONORABLY DISCHARGED: Dec 22/18

WALLACE, Clarence Douglas 1,619,277 White
 ADDRESS: R.F.D. #1, Downsville, Union Par., LA
 INDUCTED: Farmerville, LA Sept 6, 1918 POB: Downsville, LA DOB: May 5, 1897
 ORGANIZATIONS: 17 MP Co to disch GRADES: Pvt 1cl Oct 30/18
 HONORABLY DISCHARGED: Jan 26/19

WALLER, George P. 2,134,207 White
 ADDRESS: Laran, Union Par., LA
 INDUCTED: Farmerville, LA Dec 27/1917 POB: Auburn, AL DOB: 23 6/12 yrs
 ORGANIZATIONS: Co B 512 Engre (Serv Bn) to disch. GRADES: Corp Feb 10/18;
 Sgt Apr 10/19 SERVED OVERSEAS: Apr 7/18 to June 18/19
 HONORABLY DISCHARGED: July 3/19

WANZA, Gus 3,271,998 Colored
 ADDRESS: Farmerville, Union Par., LA
 INDUCTED: Camden, AR June 20/18 POB: Farmerville, LA DOB: 26 5/12 yrs
 ORGANIZATIONS: Co C 334 Lab Bn Adv Ord to disch GRADES: Pvt
 SERVED OVERSEAS: July 18/18 to Feb 24/19 HONORABLY DISCHARGED: Mch 17/19

WARD, Hail 1,619,309 White
 ADDRESS: Farmerville, Union Par., LA
 INDUCTED: Farmerville, LA Sept 6/18 POB: Farmerville, LA DOB: Aug 16, 1896
 ORGANIZATIONS: Co B 5 Inf to Nov 15/18; Co F 83 Inf to disch GRADES: Pvt
 HONORABLY DISCHARGED: Jan 24/18

WARREN, Ed 3,763,048 Colored
 ADDRESS: Route #2 Boc 67, Farmerville, Union Par., LA
 INDUCTED: Union Co La Sept 1, 1918 POB: Farmerville, La DOB: Dec 13, 1896
 ORGANIZATIONS: 166 Dep Brig to disch GRADES: Pvt
 HONORABLY DISCHARGED: Jan 2/19

WASHAM, James E. 738,234 White
 ADDRESS: Lillie, Union Par., LA
 ENLISTED: RA Jackson Bks La Aug 23/17 POB: Lillie, LA DOB? 22 6/12 yrs
 ORGANIZATIONS: Co E 17 Inf to Aug 5/18; Co E 71 Inf to disch GRADES:
 Pvt July 1/18; Corp Aug 1/18; Sgt Sept 3/18 HONORABLY DISCHARGED: Feb 8/19

WASHAM, Thomas H. 2,573,840 White
 ADDRESS: Lillie, Union Par., LA
 ENLISTED: RA Jackson Bks LA Apr 11/18 POB: Lillie, LA DOB: 19 11/12
 ORGANIZATIONS: Jefferson Bks La to Aug 26/18; 45 Arty CAC Camp Eustis, VA
 to disch. GRADES: Pvt HONORABLY DISCHARGED: Nov 19/18 per SCD

WASHINGTON, George 1,611,828 Colored
 ADDRESS: R.F.D. #3, Bernice, Union Par., LA
 INDUCTED: Homer, LA July 28, 1918 POB: Lisbon, LA DOB: May 25/92
 ORGANIZATIONS: Co C 419 Reserve Labor Bn to disch. GRADES: Pvt
 HONORABLY DISCHARGED: Mch 14/19

WATSON, Lugen 3,343,795 Colored
 ADDRESS: R.F.D. #9 Lillie, Union Par., LA
 INDUCTED: Farmerville, LA July 16/18 POB: Clavin Co La DOB: Apr/1893
 ORGANIZATIONS: 161 Dep Brig to disch. GRADES: Pvt
 HONORABLY DISCHARGED: Nov 14/18 on SCD 10% disabled

WEBB, Ashley B. 3,263,733 White
 ADDRESS: Downsville, Union Par., LA
 INDUCTED: Ruston, LA June 24, 1918 POB: Downsville, LA DOB: 30 4/12 yrs
 ORGANIZATIONS: 162 Dep Brig to Sept 14/18; Camp Pike Sept Aut Repl Draft to

to Oct 11/18; Co D 161 Inf to Oct 22/18; Co H 23 Inf to disch
GRADES: Pvt SERVED OVERSEAS: Sept 26/18 to July 22/19
HONORABLY DISCHARGED: Aug 9/19

WELCH, Robert T. 1,508,214 White
ADDRESS: Bernice, Union Par., LA
INDUCTED: RA Jefferson Bks MO Mch 21/14 POB: Marthaville, LA DOB: 26 11/12 yrs
ORGANIZATIONS: Amb Co 5 Camp Funston TX to Aug 6/17; Base Hosp Camp Bowie TX
to July 16/18; Base Hosp 84 to disch GRADES: Ck Nov 1/17; Pvt 1cl Feb 9/
19 SERVED OVERSEAS: Sept 1/18 to July 21/19
HONORABLY DISCHARGED: July 29/19

WELCH, Willie A. 727,745 White
ADDRESS: Bernice, Union Par., LA
INDUCTED: RA Jack Bks La Mch 18/18 POB: Bernice, LA DOB: 19 7/12 yrs
ORGANIZATIONS: Co L 19 Inf to disch GRADES: Pvt 1cl
HONORABLY DISCHARGED: Mch 25/19 to re-enlist

WHELLER, Rivers 3,304,549 Colored
ADDRESS: Downsville, Union Par., LA
INDUCTED: Ruston, LA June 20, 1918 POB: Downsville, LA DOB: 22 yrs
ORGANIZATIONS: 164 Dep Brig to July 14/18; Co A 806 Pion Inf to disch.
GRADES: Pcr June 17/19 SERVED OVERSEAS: Sept 8/18 to June 24/19
HONORABLY DISCHARGED: July 18/19 SCD 25% disabled

WHEELIS, Willis B. 2,919,821 White
ADDRESS: Marion, Union Par., LA
INDUCTED: Farmerville, LA Sept 18, 1918 POB: Marion, LA DOB: Nov 15, 1896
ORGANIZATIONS: Students Army Tng C Tulane Univ New Orleans La to disch.
GRADES: Pvt HONORABLY DISCHARGED: Dec 5, 1918

WHITE, John W. 1,619,641 White
ADDRESS: R.F.D. #3, Farmerville, Union Par., LA
INDUCTED: Farmerville, LA Sept 16/1918 POB: Farmerville, LA DOB: Nov 26/96
ORGANIZATIONS: Co D 5 Inf to disch GRADES: Pvt
HONORABLY DISCHARGED: Jan 26, 1919

WILCHER, John 1,566,586 White
ADDRESS: Marion, Union Par., LA
INDUCTED: Hamburg, Ark July 6, 1918 POB: Bernice, LA DOB: May 30/1888
ORGANIZATIONS: Co F 150 Inf to Nov 1/18; Co F 114 Inf to disch.
GRADES: Pvt SERVED OVERSEAS: Nov 6/18 to May 6/19
HONORABLY DISCHARGED: May 21, 1919

WILKINS, Dayton 2,563,228 Colored
ADDRESS: Lillie, Union Par., LA
INDUCTED: Farmerville, LA Apr 9, 1918 POB: Near Homer, LA DOB: 30 yrs
ORGANIZATIONS: 12 Co Cas Det Camp Pike to disch. GRADES: Private
HONORABLY DISCHARGED: May 3, 1918 SCD 25% disabled

WILKINS, John 2,109,338 Colored
ADDRESS: Lillie, Union Par., LA
INDUCTED: Farmerville, LA Mch 30, 1918 POB: Homer, LA DOB: 23 8/12 yrs
ORGANIZATIONS: Co c 524 Engrs to May 9/18; 162 Dep Brig to disch.
GRADES: Pvt HONORABLY DISCHARGED: Nov 12 1918 SCD 30% disabled

WILL, Eugene 231,319 Colored
ADDRESS: Haile, Union Par., LA

INDUCTED: Union Parish, LA Oct 5, 1917 POB: Haile, LA DOB: 22 7/12 yrs
ORGANIZATIONS: 809 Co TC to Mch 29/19; 803 Co TC to disch GRADES: Pvt
SERVED OVERSEAS: Apr 7/18 to May 25/19 HONORABLY DISCHARGED: July 1/19

WILLIAMS, Alonzo L.(ucas) 2,109,349 Colored

ADDRESS: Downsville, Union Par., LA

INDUCTED: Farmerville, LA Mch 30/18 POB: Downsville, LA DOB: 22 1/12 yrs

ORGANIZATIONS: Co B 524 Engrs to May 10/18; 162 Dep Brig to June 10/18; Co D
318 Labor Bn to June 19/18; Co A Provisional Bn Camp Hill Va to July 18/18;
Co A 405 Labor Bn to Aug 16/18; Co C 407 Serv Bn to disch.

GRADES: Pvt 1 cl Jan 1/19 HONORABLY DISCHARGED: May 9/19

WILLIAMS, David 3,343,797 Colored

ADDRESS: R.F.D.#1 Box 27, Downsville, Union Par., LA

INDUCTED: Farmerville, LA July 16, 1918 POB: Downsville, LA DOB: Dec 26/92

ORGANIZATIONS: 48 Co 161 Dep Brig to Aug 6/18; Aug Repl Draft Cp Grant Ill to
Sept 15/18; Pris of War Escort Co #49 to Dec 7/18; 9 Co Cas Det SOS to Feb
25/19; ob Cas Co #188 to Feb 28/19; 15 Co 4 Bn 155 Dep Brig to Mch 7/19; 27
Co Rct Dep Cp Shelby Miss to disch. GRADES: Pvt SERVED OVERSEAS: Aug 22/18
to Feb 19/19 HONORABLY DISCHARGED: Mch 27/19

WILLIAMS, Edgar D. 3,343,796 Colored

ADDRESS: Route #1, Downsville, Union Par., LA

INDUCTED: Union Co LA July 16/18 POB: Downsville, LA DOB: Feb 17/93

ORGANIZATIONS: 161 Dep Brig to Sept 15/18; Prisoner of War Escort Co 47 to
disch. GRADES: Pvt. SERVED OVERSEAS: Aug 22/18 to Feb 12/19

HONORABLY DISCHARGED: Mch 17/19

WILLIAMS, Florence 3,301,578 Colored

ADDRESS: R.F.D. #1, Downsville, Union Par., LA

INDUCTED: Farmersville, LA June 19, 1918 POB: Monroe, LA DOB: 24 8/12 yrs

ORGANIZATIONS: 164 Dep Brig to Aug 20/18; Co A 415 Reserve Labor Bn to Oct
15/18; Hq Co 65 Pion Inf to disch. GRADES: Pvt

HONORABLY DISCHARGED: Dec 14/18

WILLIAMS, Genia 3,303,559 Colored

ADDRESS: Truxno, Union Par., LA

INDUCTED: Farmerville, LA June 19, 1918 POB: Cherridge, LA DOB: 22 8/12 yrs

ORGANIZATIONS: Co M 805 Pion Inf to disch. GRADES: Pvt

SERVED OVERSEAS: Sept 2/18 to June 27/19 HONORABLY DISCHARGED: July 12/19

WILLIAMS, Ira 3,845,950 Colored

ADDRESS: R.F.D. #1, Downsville, Union Par., LA

INDUCTED: Farmerville, LA Aug 22, 1918 POB: Downsville, LA DOB: 23 7/12 yrs

ORGANIZATIONS: MD 816 a Pion Inf to disch. GRADES: Pvt

SERVED OVERSEAS: Oct 11/18 to Aug 1/19 HONORABLY DISCHARGED: Aug 12/19

WILLIAMS, Jerman 2,109,342 Colored

ADDRESS: Bernice, Union Par., LA

INDUCTED: Farmerville, LA Mch 30/18 POB: Spencer, LA DOB: 25 9/12 yrs

ORGANIZATIONS: Co C 524 Engr to disch. GRADES: Pvt

SERVED OVERSEAS: July 10/18 to June 26/19 HONORABLY DISCHARGED: July 8/19

WILLIAMS, Joel Thomas 1,607,185 White

ADDRESS: Farmerville, Union Par., LA

INDUCTED: Farmerville, LA May 28, 1918 POB: Junction City, AR DOB: Aug 1, 1896

ORGANIZATIONS: Co K 156 Inf to Oct 18/18; Co A 127 Inf to disch.

GRADES: Pvt SERVED OVERSEAS: Aug 22/18 to May 5/19 HONORABLY DISCHARGED:
May 24/19

WILLIAMS, Levon 4,430,199 Colored
 ADDRESS: Route #1 Box 27, Downsville, Union Par., LA
 INDUCTED: Tuskegee Inst AL Oct 1, 1918 POB: Downsville, LA DOB: Feb 7/1900
 ORGANIZATIONS: Students Army Tng C Tuskegee Inst Ala to disch. GRADES: Pvt
 HONORABLY DISCHARGED: Dec 19/18

WILLIAMS, Oscar 3,763,061 Colored
 ADDRESS: Route #3, Bernice, Union Par., LA
 INDUCTED: Claiborne Co La Sept 1, 1918 POB: Homer, LA DOB: Dec 28/1893
 ORGANIZATIONS: 161 Dep Brig to Sept 17/18; Co D 812 Pion Inf to Oct 26/18;
 Co B 416 Serv Bn to May 2/19; Co A 416 Serv Bn to disch. GRADES: Pvt
 HONORABLY DISCHARGED: May 28/19

WILLIAMS, Perry 1,619,316 White
 ADDRESS: R.F.D. #2 Farmerville, Union Par., LA
 INDUCTED: Union Par., LA Sept 6/18 POB: Farmerville, LA DOB: Feb 9/97
 ORGANIZATIONS: Co B 5 Inf to Sept 22/18; QMC Camp Beauregard La to disch.
 GRADES: Pvt HONORABLY DISCHARGED: Feb 11/19

WILLIAMS, Robert 3,763,686 Colored
 ADDRESS: Randolph, Union Par., LA
 INDUCTED: Union Co LA Sept 1/18 POB: Monroe, LA DOB: Dec 25/1896
 ORGANIZATIONS: 161 Dep Brig to disch. GRADES : Pvt
 HONORABLY DISCHARGED: Jan 2/19

WILSON, Alfra 196,235 Colored
 ADDRESS: Downsville, Union Par., LA
 INDUCTED: Farmerville, LA Oct 26, 1917 POB: Downsville, LA DOB: 22 5/12 yrs
 ORGANIZATIONS: Co B 508 Engrs to disch. GRADES: Pvt
 SERVED OVERSEAS: Jan 24/18 to June 6/19 HONORABLY DISCHARGED: June 19/19

WILSON, Elisha D. 2,923,124 White
 ADDRESS: Spencer, Union Par., LA
 INDUCTED: Farmerville, LA July 16, 1918 POB: Spencer, LA DOB: Dec 1/1895
 ORGANIZATIONS: Co H 143 Inf to disch. GRADES: Pvt
 HONORABLY DISCHARGED: Mch 17/19

WILSON, Frank L. 2,116,508 White
 ADDRESS: Linville, Union Par., LA
 INDUCTED: Farmerville, LA Mch 31, 1918 POB: Linville, LA DOB: 26 1/12 yrs
 ORGANIZATIONS: 162 Dep Brig to Apr 13/18; M D to disch. GRADES: Pvt 1cl
 Sept 1/18 SERVED OVERSEAS: Oct 26/18 to Aug 29/19
 HONORABLY DISCHARGED: Sept 9/19

WILSON, William A. 1,590,692 White
 ADDRESS: Downsville, Union Par., LA
 INDUCTED: Farmerville, LA Sept 18, 1917 POB: Downsville, LA DOB: 21 7/12 yrs
 ORGANIZATIONS: Co I 347 Inf to Nov 9/17; 14 F Sig Bn to Dec 21/17; Co C 154
 Inf to Sept 27/18; Co A 52 Inf to disch. GRADES: Pvt 1cl Sept 1/18
 SERVED OVERSEAS: Aug 6/18 to June 12/19 HONORABLY DISCHARGED: June 24/19

WILTCHER, George J. 1,590,692 White
 ADDRESS: Farmerville, Union Par., LA
 ENLISTED: NG Camden, AR Aug 27/17 POB: Farmerville, LA DOB: 20 2/12 yrs
 ORGANIZATIONS: Co C 3 Inf Ark NG (Co C 154 Inf) to May 11/18; Gd & Fire Co
 #312 to disch. GRADES: Pvt 1cl May 18/18 HONORABLY DISCHARGED: Dec 11/18

WINES, Clint 4,780,291 Colored

ADDRESS: Farmerville, Union Par., LA
INDUCTED: Farmerville, LA Sept 27, 1918 POB: Farmerville, LA DOB: 1896
ORGANIZATIONS: Col CAC Det Camp Beauregard La to Disch. GRADES: Pvt
HONORABLY DISCHARGED: Jan 21/19

WOODS, Roderick D. 4,843,931 Colored
ADDRESS: Downsville, Union Par., LA
INDUCTED: Pine Bluff AR July 29, 1918 POB: Lincoln Par., LA DOB: 22 5/12 yrs
ORGANIZATIONS: 162 Dep Brig to disch. GRADES: Corp Nov 1/18
HONORABLY DISCHARGED: Dec 21/18

WRIGHT, Floyd- 2,131,578 Colored
ADDRESS: Downsville, Union Par., LA
INDUCTED: Ruston, LA Mch 30, 1918 POB: Downsville, LA DOB: 22 yrs
ORGANIZATIONS: Co D 523 Engrs to Oct 18/18; 20th Serv Co 20th Engrs to July 8/19; Cas Det 1 Demob Gp to disch. GRADES: Cook June 22/18
SERVED OVERSEAS: July 10/18 to July 5/19 HONORABLY DISCHARGED: July 17/19

WRIGHT, Rompton 3,301,518 Colored
ADDRESS: R.F.D. #2 Bernice, Union Par., LA
INDUCTED: Farmerville, LA June 19, 1918 POB: Bernice, LA DOB: 22 6/12 yrs
ORGANIZATIONS: Co c 530 Engrs to disch. GRADES: Pvt
HONORABLY DISCHARGED: Nov 30/18

YOUNG, Richard 2,863,051 Colored
ADDRESS: Farmerville, Union Par., LA
INDUCTED: Farmerville, LA May 1, 1918 POB: Cairo, LA DOB: 28 1/12 yrs
ORGANIZATIONS: 162 Dep Brig to disch. GRADES: Pvt
HONORABLY DISCHARGED: July 27, 1918 SCD 30% disabled

WOUNDED VETERANS

US ARMY

ANDREWS, Paul 1,598,218 White
ADDRESS: Truxno, Union Par., LA
INDUCTED: Farmerville, LA Sept 18/17 POB: Marion, LA DOB: 24 11/12 yrs
ORGANIZATIONS: Co I 347 Inf to Nov 9/17; Co M 156 Inf to Sept 20/18; Co L 356 Inf to discharge. GRADES: Pvt WOUNDS: Gassed in Action Oct 6, 1918
SERVED OVERSEAS: Aug 22/18 to Feb 9/19 HONORABLY DISCHARGED: Feb 25/19

BALLARD, Frank 1,597,102 White
ADDRESS: Marion, Union Par., LA
INDUCTED: Farmerville, LA Sept 18/17 POB: Blackrock, Ark DOB: 23 yrs
ORGANIZATIONS: Co I 347 Inf to Nov 9/17; Co F 156 Inf to Mch 13/18; Hq co 150 Inf to Sept 21/18; Co A 356 Inf to discharge. GRADES: Pvt ENGAGEMENTS: Romagne WOUNDS: Severely about Oct 21, 1918 SERVED OVERSEAS: Aug 22/18 to Apr 2/19 HONORABLY DISCHARGED: Apr 15/19

BARKLEY, Walter 1,598,228 White
ADDRESS: Downsville, Union Par., LA
INDUCTED: Farmerville LA Sept 18, 1918 POB: Downsville, LA DOB: 22 7/12 yrs
ORGANIZATIONS: Co I 347 Inf to Nov 9/17; Co M 156 Inf to June 29/18; Co M 163 Inf to July 4/18; Co I 7 Inf to discharge. GRADES: Pvt WOUNDS: Degree undetermined July 16, 1918 SERVED OVERSEAS: June 7/18 to Jan 18/19
HONORABLY DISCHARGED: Jan 28/19

DOSTER, Louis A. 1,598,262 White
ADDRESS: Cherry Ridge, Union Par., LA
INDUCTED: Farmerville, LA Sept 18/17 POB: Union Par., LA DOB: 21 yrs

ORGANIZATIONS: Co I 347 Inf to Nov 9/17; Co M 156 Inf to June 29/18; Co G 163 Inf to July 4/18; Co K 30 Inf to disch. GRADES: Pvt ENGAGEMENTS: Chat-eau-Thierry; Toul; Verdun; Vesle; St Mihiel Argonne, Channel WOUNDS: Severely Oct 9, 1918 SERVED OVERSEAS: June 7/18 to Dec 17/18 HONORABLY DISCHARGED: Feb 13/19

FUTCH, Robert R. 2,108,461 White
ADDRESS: Route #3, Lillie, Union Par., LA
INDUCTED: Farmerville, LA Dec 27/1917 POB: Lillie, LA DOB: 23 3/12 yrs
ORGANIZATIONS: 13 Co 4 Tng Bn 162 Dep Brig to Feb 1/18; Co B 348 Inf to July 27/18; Co C 23 Inf to disch. GRADES: Pvt WOUNDS: Severely about Oct 4, 1918 SERVED OVERSEAS: June 22/18 to Apr 18/19 HONORABLY DISCHARGED: June 28/20 SCD 50% disabled

GOLDEN, Lorenzo C. 2,106,607 White
ADDRESS: Downsville, Union Par., LA
INDUCTED: Farmerville, LA Sept 18, 1917 POB: Downsville, LA DOB: 22 1/12 yrs
ORGANIZATIONS: Co I 347 Inf to June 10/18; Co G 163 Inf to disch. GRADES: Pvt ENGAGEMENTS: Soissons; St. Mihiel; Champagne; Meuse-Argonne. WOUNDS: Slightly July 18, 1918 SERVED OVERSEAS: June 20/18 to June 16/19 HONORABLY DISCHARGED: June 25, 1919

GOYNE, Carroll H. 1,698,281 White
ADDRESS: Bernice, Union Par., LA
ENLISTED: NG Camp Nicholls La July 15/17 POB: Bernice, LA DOB: 18 2/12 yrs
ORGANIZATIONS: Co F 1 Inf La NG (Co F 156 Inf) to Nov 1/17; Co M 156 Inf to May 18/18; Repl Draft Camp Beauregard, LA to June 29/18; Co G 163 Inf to July 4/18; Co E 30 Inf to disch. GRADES: Pvt, Corp Dec 18/18 ENGAGEMENTS: Aisne, Chateau Thierry WOUNDS: Severely Oct 21, 1918 SERVED OVERSEAS: June 7/18 to Aug 23/19 HONORABLY DISCHARGED: Aug 30/19

GRAFTON, Elza 1,597,149 White
ADDRESS: Bernice, Union Par., LA
INDUCTED: Farmerville, LA Sept 21, 1917 POB: Bernice, LA DOB: 22 8/12 yrs
ORGANIZATIONS: Co F 347 Inf to Nov 9/17; Co F 156 Inf to May 10/18; Co C 162 Inf to July 7/18; Co B 23 Inf to disch. GRADES: Pvt ENGAGEMENTS: Soissons; Argonne WOUNDS: Slightly July 19, 1918 SERVED OVERSEAS: June 12/18 to Nov 13/18 HONORABLY DISCHARGED: Mch 14/19 15% disabled

HEARD, George P. 2,102,767 White
ADDRESS: Route #3, Lillie, Union Par., LA
INDUCTED: Farmerville, LA Dec 27/17 POB: Lisbon, LA DOB: 22 8/12 yrs
ORGANIZATIONS: Co M 346 Inf to June 11/18; Co K 163 Inf to July 23/18; Co G 39 Inf to disch. GRADES: Corp Sept 7/18 ENGAGEMENTS: St. Thibaut; Argonne WOUNDS: Slightly Sept 28, 1918 SERVED OVERSEAS: June 20/18 to Apr 30/19 HONORABLY DISCHARGED: May 16/19

HOLLIS, Charles B. 157,835 White
ADDRESS: Bernice, Union Par., LA
ENLISTED: RA Jackson Bks La May 24, 1917 POB: Bernice, LA DOB: 22 8/12 yrs
ORGANIZATIONS: Co A 6 Engrs to disch. GRADES: Pvt 1cl Nov 3/17; Corp Apr 1/17; Stat Sgt July 11/18 ENGAGEMENTS: Champagne WOUNDS: Slightly July 16, 1918 SERVED OVERSEAS: Dec 4/17 to Mch 23/19 HONORABLY DISCHARGED: Apr 14/19

OWENS, Edward J. 1,590,663 White
ADDRESS: Downsville, Union Par., LA
INDUCTED: Farmerville, LA Sept 18, 1917 POB: Downsville, LA DOB: 21 7/12 yrs

POWELL, Edgar T. 2,339,948 White
 ADDRESS: Point, Union Par., LA
 ENLISTED: Jefferson Bks MO Nov 9, 1916 POB: Point, LA DOB: 19 11/12 yrs
 ORGANIZATIONS: Co M 4 Inf to discharge. GRADES: Corp Aug 8/17; Pvt May 28/18;
 Pvt 1 cl Sept 22/18; Corp Jan ____; Pvt Mch 3/19 WOUNDS: Degree undetermined
 July 16, 1918 SERVED OVERSEAS: Apr 6/18 to Aug 22/19 HONORABLY DISCHARGED:
 Nov 12/19 to re-enlist

ROYE, Palmer A. 56,919 White
 ADDRESS: Farmerville, Union Par., LA
 ENLISTED: RA Jackson Bks La Apr 19, 1917 POB: Marion, LA DOB: 21 2/12 yrs
 ORGANIZATIONS: Co B 28 Inf to disch. GRADES: Ck Nov 12/18 WOUNDS: Severely
 May 28, 1918 SERVED OVERSEAS: June 14/17 to Feb 4/19 HONORABLY DISCHARGED:
 Apr 3/19

SIKES, John T. 2,563,251 White
 ADDRESS: R.F.D. #1, Marion, Union Par., LA
 INDUCTED: Farmerville, LA Apr 10/18 POB: Jackson Par., LA DOB: 22 10/12 yrs
 ORGANIZATIONS: 14 Co 4 Bn 162 Dep Brig to May 22/18; Co A 116 Inf to disch.
 GRADES: Pvt WOUNDS: Slightly about Oct 14, 1918 SERVED OVERSEAS: June 15/18
 to May 20/19 HONORABLY DISCHARGED: June 4/19

SMITH, Henry 1,585,185 White
 ADDRESS: R.F.D. #2 Box 64, Bernice, Union Par., LA
 INDUCTED: Camp Beauregard, LA May 21/1894
 ORGANIZATIONS: Co F 114 Engrs to disch GRADES: Pvt WOUNDS: Slightly Nov 4,
 1918 SERVED OVERSEAS: Aug 22/18 to May 3/19 HONORABLY DISCHARGED: May 20/19

SPENCER, John M. 2,563,250 White
 ADDRESS: Spencer, Union Par., LA
 INDUCTED: Farmerville, LA Apr 10/18 POB: Spencer, LA DOB: 22 7/12 yrs
 ORGANIZATIONS: 14 Co 4 Bn 162 Dep Brig to Apr 30/18; 21 Co 2 Inf Repl Regt
 Camp Gordon GA to May 22/18; Co C 116 Inf to Feb 25/19; Co C Postal Express
 Service to disch. GRADES: Pvt WOUNDS: Slightly about Nov 1, 1918
 SERVED OVERSEAS: June 15/18 to May 27/19 HONORABLY DISCHARGED: June 2/19

THOMAS, James C. 2,116,506 White
 ADDRESS: Spencer, Union Par., LA
 INDUCTED: Farmerville, LA Mch 31, 1918 POB: Spencer, LA DOB: 23 8/12 yrs
 ORGANIZATIONS: 19 Co 5 Tng Bn 162 Dep Brig to Mch 1/18; 23 Co 6 Bn 2 Inf
 Repl Regt Camp Gordon Ga to May 18/18; Co E 116 Inf to disch. GRADES: Pvt
 WOUNDS: Severely Sept 13, 1918 SERVED OVERSEAS: June 15/18 to Nov 9/18
 HONORABLY DISCHARGED: Feb 1, 1919 S.C.D. 50% disabled.

THOMPSON, Lewis W. 1,598,183 White
 ADDRESS: Route #3, Bernice, Union Par., LA
 INDUCTED: Homer, La Sept 19, 1917 POB: Summerfield, LA DOB: 24 yrs
 ORGANIZATIONS: 156 Inf to May 18/18; Camp Beauregard Repl Draft to July
 1/18; Co G 163 Inf to July 19/18; Co F 38 Inf to disch., GRADES: Bglr
 Oct 23/17; Pvt 1cl May 3/18; Pvt 1cl Jan 18/19 WOUNDS: Slightly Oct 11,
 1918 SERVED OVERSEAS: June 12/18 to Aug 23/19 HONORABLY DISCHARGED: Sept
 2/19

ARRANT, Zealius E. 1,598,224 Colored
 ADDRESS: Marion, Union Par., LA
 INDUCTED: Co I 347 Inf to Nov 9/17; Co M 156 Inf to May 18/18; Co M 163
 Inf to July 4/18; Co I 7 Inf to disch. GRADES: Pvt; Corp Aug 2/18
 ENGAGEMENTS: Argonne Marne; St. Mihiel; Champagne Marne Offensive

WOUNDS: Slightly Oct 17, 1918 SERVED OVERSEAS: June 7/18 to Aug 25/19
HONORABLY DISCHARGED: Sept 3/19

DECEASED VETERANS
US ARMY

ADCOCK, Jerry H. 1,596,115 White
ADDRESS: Lillie, Union Par., LA
INDUCTED: Farmerville, LA Sept 18, 1917 POB: Spearsville, LA DOB: 22 yrs
ORGANIZATIONS: Co I 347 Inf from Sept 19/17 to Oct 22/17; School for Bakers
& Cooks Camp Pike Ark to Nov 7/17; Co A 156 Inf to May 10/18; Cp Beauregard
Repl Dft to July 2/18; Co D 162 Inf to July 8/18; Co A 23 Inf to Dec 11/18
GRADES: Pvt ENGAGEMENTS: Chateau Thierry; South of Soissons; St. Mihiel,
North of Verdun Champagne. WOUNDS: Wounded in action Nov 3/18 SERVED OVER-
SEAS: June 12/18 to Dec 11/18 WOUNDS: Wounded in action Nov 3/18 HONORABLY
DISCHARGED: Died of Broncho Pneumonia Dec 11, 1918 Person notified of death:
William B. ADCOCK, father, Spearsville, LA

ALLEN, James Nolan 4,295,729 White
ADDRESS: R.F.D. #3, Farmerville, Union Par., LA
INDUCTED: Farmerville, LA Aug 8/18 POB: Farmerville, LA DOB: June 19/1918
ORGANIZATIONS: Co 11 Detention Camp Camp Shelby to death GRADES: Pvt
HONORABLY DISCHARGED: Died of Lobar Pneumonia Sept 1, 1918. Person notified
of death: Emma Lutica PATRICK, R.F.D. # 3, Farmerville, LA

ANTLEY, Elder 1,619,286 White
ADDRESS: Point, Union Par., LA
INDUCTED: Farmerville, LA Sept 6, 1918 POB: Point, LA DOB: Apr 13, 1897
ORGANIZATIONS: Co A 17 Tn & MP Camp Beauregard, La to death GRADES: Pvt
HONORABLY DISCHARGED: Died of Broncho Pneumonia Oct 19/18. Person notified
of death: Lon ANTLEY, father, West Monroe, LA

BASS, Walter J. 39,494 White
ADDRESS: Lillie, Union Par., LA
ENLISTED: RA Jefferson Bks MO Aug 19/16 POB: El Dorado, AR DOB: 19 1/3 yrs
ORGANIZATIONS: Co F 9 Inf to June 1/17; Co F 48 Inf to Aug 14/17; Co F
9 Inf to death. GRADES: Pvt 1cl Jan 1/18; Pvt Apr 1/18 ENGAGEMENTS: Chateau
Thierry SERVED OVERSEAS: Sept 7/17 to death Killed in action June 24, 1918
Person Notified of death: (Mrs) Fannie BASS (mother) Louter, La

BAYLES, Henry 1,619,267 White
ADDRESS: Point, Union Par., LA
INDUCTED: Union Par., LA Sept 9/1918 POB: Point, LA DOB: Oct 25/90
ORGANIZATIONS: Co C 5th Inf to death GRADES: Pvt DEATH: Died of Broncho
Pneumonia Oct 11, 1918. Person Notified of death: C. C. BAYLESS (father)
Point, LA

COX, George Calvert 727,980 White
ADDRESS: Marion, Union Par., LA
ENLISTED: NA Jackson Bks La Apr 9, 1918 POB: Marion, LA DOB: 18 3/12 yrs
ORGANIZATIONS: Eng Motor Transport Service Apr 27/18 to May 18/18; Co G
1st Repl Regt Engrs to June 10/18; Co G 116 Engrs to Aug 2/18; Co A 6
Engrs to Oct 20/18 GRADES: Pvt ENGAGEMENTS: 2nd Battle of Verdun SERVED
OVERSEAS: June 14/18 to Oct 20/18 Killed in action Oct 10, 1918. Person
notified of death: R. D. COX (father) Marion, LA

CRABTREE, Joseph 3,035,749 White
ADDRESS: Truxno, Union Par, La

INDUCTED: Farmerville, La Oct 24, 1918 POB: Swartz, La DOB: Jan 8, 1899
ORGANIZATIONS: Casual Det Camp Nicholls La to death. GRADES: Pvt
Died of Broncho Pneumonia Nov 12, 1918. Person Notified of death: Mr.
John CRABTREE (brother) Mer Rouge, LA

FARMER, Roy 1,617,663 White
ADDRESS: Downsville, Union Par., LA
INDUCTED: Rustin, La Sept 6/18 POB: Downsville, LA DOB: Dec 20/96
ORGANIZATIONS: Co H 5 Inf to death GRADES: Pvt. Died of Broncho pneumonia
Oct 10, 1918. Person notified of death : W. N. FARMER (father) Downsville, LA

FEAZEL, Harvest G. 1,598,270 White
ADDRESS: Point, Union Par., LA
INDUCTED: Farmerville, LA Sept 18, 1917 POB: Point, LA DOB: 31 yrs
ORGANIZATIONS: Co I 347 Inf Sept 19/17 to Nov 9/17; Co M 156 Inf to May 18/18;
Camp Beauregard Repl Draft to June 29/18 GRADES: Pvt ENGAGEMENTS: Marne
SERVED OVERSEAS: June 7/18 to Oct 19/18 Died Oct 19/18. Person notified
of death: Mrs. Sallie FEAZEL (mother) Point, LA

GRAY, James W. 1,619,308 White
ADDRESS: R.F.D.#2, Bernice, Union Par., LA
INDUCTED: Farmerville, LA Sept 6, 1918 POB: Bernice, LA DOB: Dec 28, 1896
ORGANIZATIONS: Co C 5 Inf to death. GRADES: Pvt. DIED of Lobar Pneumonia
Oct 3, 1918. Person notified of death: Mrs. Sallie ANDREWS (mother) Bernice, LA

HOLLEY, Robert K. 1,619,254 White
ADDRESS: R.F.D.#1, Randolph, Union Par., LA
INDUCTED: Farmerville, LA Sept 6/18 POB: Spearsville, LA DOB: June 10, 1894
ORGANIZATIONS: Co A 17 Tn Hq & M P to death GRADES: Pvt DIED of Lobar Pneu-
monia Oct 8/18. Person notified of death: D. W. HOLLEY (father) Randolph, La

McCOY, Ben A. White
ADDRESS: Lillie, Union Par., LA
INDUCTED: Farmerville, LA Sept 18, 1917 POB: Cherry Ridge, LA DOB: 23 3/12
ORGANIZATIONS: Co I 347 Inf to ____; Co M 156 Inf to death. GRADES: Pvt
Died of Pneumonia Dec 21, 1917. Person notified of death: Mrs. L. McCoy
(mother) Lillie, La

ODOM, Marcel 3,268,276 White:
ADDRESS: R.F.D.#2, Farmerville, Union Par., LA
INDUCTED: Farmerville, LA June 26, 1918 POB: Farmerville, LA DOB: 22 5/12 yrs
ORGANIZATIONS: 33 Co 9 Tng Bn 162 Dep Brig June 26/18 to Sept 3/18; 48 Co
12 Rec Bn 162 Dep Brig to Nov 3/18. GRADES: Pvt. Died of Meningitis Nov 3,
1918. Person notified of death: W. A. ODOM, Farmerville, LA

OWENS, Dewey Lucian 553,718 White
ADDRESS: Point, Union Par., LA
ENLISTED: RA Jefferson Bks, MO Nov 9, 1916 POB: Point, LA DOB: 18 2/12
ORGANIZATIONS: Co M 4 Inf to Aug 11/17; 1st Co Tng Bn 18 Inf to Oct 20/17;
Co M 4 Inf to Nov 21/17; Co B 8 MG Bn to death. GRADES: Pvt Nov 9/16; Corp
July 1/17 SERVED OVERSEAS Apr 2/18 to death. Killed in action July 15, 1918
Person notified of death: S. E. OWENS (father) Point, LA

PLUMMER, Sam S. White
ADDRESS: Haile, Union Par., LA
ENLISTED: NG Ruston, LA Apr 9, 1917 POB: Union Par., LA DOB: 28 2/12 yrs
ORGANIZATIONS: Co F 1 Inf La NG (Co F 156 Inf) to death. GRADES: Pvt; Corp
Died of Pleurisy, acute fibrinous lobar pneumonia Dec 21/17. Person notified
of death: J. P. MONTGOMERY (Grandfather) Haile, LA

PURDY, Charley H. 1,619,301 White
ADDRESS: R. F. D. #3, Farmerville, Union Par., LA
INDUCTED: Union Par., LA Sept 6/18 POB: Farmerville, LA DOB: Aug 5/1896
ORGANIZATIONS: Co C 5 Inf to Sept 18/18; Co G Development Bn Camp Beauregard
La to death. GRADES: Pvt. Died of Lobar Pneumonia Oct 4/18. Person notified
of death: Clara PURDY (wife) R.F.D. #3, Farmerville, LA

REAGAN, Govan B. 56,844 White
ADDRESS: Bernice, Union Par., LA
ENLISTED: RA Jackson Bks La Apr 19, 1917 POB: Bernice, LA DOB: 20 3/12
ORGANIZATIONS: Co B 28 Inf to death. GRADES: Pvt Apr 19/17; Pvt 1st cl Dec
10/17 ENGAGEMENTS: Cantigny SERVED OVERSEAS: June 12/17 to death May 30/1918
Person notified of death: Mr. S. J. REAGAN (father) Bernice, LA

ROGERS, Wellborn A. White
ADDRESS: Farmerville, Union Par., LA
INDUCTED: Farmerville, LA Sept 18, 1917 POB: Bernice, LA DOB: 22 9/12 yrs
ORGANIZATIONS: Co I 347 Inf Sept 18/17; Co F 156 Inf to Nov 24/17.
GRADES: Pvt. Died of Pneumonia Nov 24, 1917. Person notified of death:
W. J. ROGERS (father) Bernice, LA

ST. JOHN, Donnie C. 1,597,214 White
ADDRESS: Bernice, Union Par., LA
ENLISTED: NA Farmerville, LA Sept 18, 1917 POB: Bernice, LA DOB: 25 1/12 yrs
ORGANIZATIONS: Co I 347 Inf to Nov 9/17; Co F 156 Inf to July 2/18; Co D
162 Inf to July 8/18; Mg Co 23 Inf to death. GRADES: Pvt. SERVED OVERSEAS:
June 12/18 to death. Killed in action July 20, 1918. Person notified of
death: Ben St. JOHN (father) Bernice, LA

TUBBS, Benjamin T. 1,598,382 White
ADDRESS: Farmerville, Union Par., LA
INDUCTED: Farmerville, LA Sept 18, 1917 POB: Farmerville, LA DOB: 23 9/12
ORGANIZATIONS: Co I 347 Inf Sept 18/17 to Nov 9/17; Co M 156 Inf to Sept
20/18; Co K 356 Inf to Oct 25/18; Co I 356 Inf to Nov 11/18 GRADES: Pvt
Sept 18/17; Pvt 1cl Sept 12/18 ENGAGEMENTS: Meuse, Argonne SERVED OVERSEAS:
Aug 22/18 to Nov 11/18. Killed in action Nov 11, 1918. Awarded D.S.C.
Person notified of death: Homer H. TUBBS (father) Farmerville, LA

WEBB, Louis C. 3,268,047 White
ADDRESS: Spencer, Union Par., LA
INDUCTED: Farmerville, LA June 26/1918 POB: Lawson, LA DOB: 24 5/12 yrs
ORGANIZATIONS: 33 Co 9 Tng Bn 162 Dep Brig to July 22/18; 4 Bn 2 Tng Regt
Inf Repl & Tng Camp, Camp Pike AR to Aug 14/18; 7 Co Camp Pike Aug Aut Repl
Draft to Sept 15/18; Co D 161 Inf to Sept 21/18; Co K 166 Inf to death.
GRADES: Pvt. SERVED OVERSEAS: Aug 24/18 to death. Died Oct 28, 1918
Person notified of death: James L. WEBB (father) Lawson, La

WIGGINS, Bennie 56,933 White
ADDRESS: Wilhite, Union Par., LA
ENLISTED: RA Jackson Bks LA Apr 20/17 POB: Wilhite, La DOB: 18 5/12
ORGANIZATIONS: Co B 28 Inf to death. ENGAGEMENTS: Cantigny, Soissons; 2nd
Battle of Marne. SERVED OVERSEAS: June 12/17 to death. Killed in action
July 22, 1918. Person notified of death: W. A. WIGGINS (father) Wilhite, La

(To be Continued)

OBITUARY

(This unusual obituary was published in the Union County Leader, 7 Aug 1996, in Clayton, New Mexico and was submitted by Herman Weiland.)

ORLAND EMANUEL HELWIG

"Set up road signs; put up guideposts, take note of the highway, the road that you take." Jeremiah 31:21.

He was a truckdriver...the type of person who has an abiding attachment to the road. In a way, it was only fitting that his decease would come there... on the road.

The book of life entitled "Orland" began in Kansas. The first and only edition began publication on March 5, 1943. World War II days...his parents, Elma and Emanuel Helwig, were farmers in Ransom, Kansas, near a place known as McCracken, Kansas, southwest of Hayes, northwest of Gread Bend. Here he learned to walk.. talk..early years on the farm.

His book will reveal that when he was six years old, Emanuel and Elma sold the farm...moved to Alexander, then, on to Greensburg..not far from Dodge City. The family of three boys would grow up there. Dad worked in maintenance in the public school. It would figure prominently in this driver's life. It was here that Orland would graduate from High School...he would meet a young lady named Janet.. a high school senior-Janet May Unruh. A highlighted page announces marriage on May 24, 1962.

Additional entries in his book tells us that Orland worked at Caplinger Oil as assistant manager. Then, the family would hit the road! Highways..biways.. roads. Drivers and roads go together. Topeka..Newton..Wichita..California.. Nevada..Cedar City..Northwest..Southwest..Tucumcari, New Mexico.

Important pages of a man's life have to do with children. There is a page entitled "Pam" add in 1963. Another marked "Troy" published in 1964. Pam Luera lives today in Amarillo, Texas with two boys, Coy, 13, and Travis, 8 years old. Troy lives in Aurora with his wife, Kim, and a daughter, Hannah.

Pages which have to do with a man's spiritual life are, by far, the most critical. Orland was baptized as a boy in the Assembly of God of McCracken. It would be to the Assembly of God he would go in 1982..to experience God;s miracle touch of deliverance. At the altar of First Assembly..Tucumcari..he was delivered from a three to five pack a day tobacco habit. No one ever forgot it. He wouldn't let them. He had gifts..talents. Loved to sing- sang for the church on special occasions. And for the school. In fact, all three boys used to sing together. The other two survive him..Fary, of the Northwest..Loren, from the Southeast. Mother Elma, in Greensburg, Kansas, is left to mourn the loss of her son along with his wife, Janet, the two children and the three grandchildren.

Orland had hobbies. Golf..fishing..hunting..boats..buying and selling..garage sales. Two stand out..talking for hours on the phone with loved ones and friends..Vehicles..motorcycles..cars..trucks. He was a truckdriver. Drove for Yellow Freight since 1978-was driving when he died.

"And a highway will be there; it will be called the Way of Holiness." Isaiah 35:8.

* * * * *

Submitted by:

Carole E. Neal
3501-35th Ave., #4
Oakland, CA 94619-1343

4 Eleazer L. Neal

b. 20 Oct 1880
Wisner, Louisiana
d. 11 Oct 1964
Winnsboro, Louisiana
m. 27 Sep 1911
Winnsboro, Louisiana

2 Solomon Louis Neal

b. 24 Dec 1917
Winnsboro, Louisiana
d. 26 Feb 1994
Mill Valley, California
m. 11 Feb 1946
San Francisco, California

5 Ollie Ward

b. 1890
Gilbert, Louisiana
d. 1923
Winnsboro, Louisiana

1 Carole Elaine Neal

b.
San Francisco, California
r.

6 John Loy Seals

b. Apr 1885
Homer, Louisiana
d. 6 May 1930
Homer, Louisiana
m. 28 Mar 1912
Athens, Louisiana

3 Fannye Deborah Seals

b. 2 Jul 1925
Homer, Louisiana
d. 22 Sep 1993
San Francisco, California

7 Pernilla I. Jamison

b. 28 Mar 1896
Athens, Louisiana
d. 6 Sep 1970
Homer, Louisiana

8 Stephen Neal

b. 1851
Wisner, Louisiana
d.
m.

9 Francis Williams

b. Nov 1858
Wisner, Louisiana
d.

10 Jesse Ward

b. 1865
Texas
d.
m.

11 Eliza Davis

b. 1868
Louisiana
d.

12 Abraham Seals

b. 1834
South Carolina
d.
Homer, Louisiana
m. 11 Feb 1866
Claiborne Parish, Louisiana

13 Fannie Henderson

b. 1845
Alabama
d. 17 Mar 1929
Homer, Louisiana

14

b.
d.
m.

15 Annie Warren

b. 21 May 1874
Camden, Arkansas
d. 9 May 1958
Homer, Louisiana

November 12, 1997

SURNAME INDEX

ADAMS 9	BAYLESS 24, 32, 36	BROOKS 9	CLINTON 11
ADCOCK 46	46	BROUSSARD 7, 12	CLUTTER 7
ADDY 13	BAZER 12	BROWN 7, 11, 13	COATES 13
ADKINS 7	BEAIRD 11	BROWNLEE 17	COBB 7, 31
AINSWORTH 7	BEAM 13	BROWNLEE 9, 15	CODAY 12
ALBERTSON 6	BEARDEN 25, 26	BRUMBELOW 13	CODAY, JR
ALEXANDER 5, 7, 21,	BEAVER 12	BRYAN 12, 18, 20,	COLEMAN 7, 21
22	BECK 36	35	COLLINS 12
ALLBRIGHTON 12	BEHLING 9	BRYANT 35	COLLINSWORTH 9
ALLBRITTON 12	BELLE 10	BUCHANAN 30	CONNELL 7, 10
ALLEN 13, 46	BENJAMIN 8	BUCKLEY 12	CONNELLY 17
ALLISON 12	BENNETT 34	BULL 12, 36	COOK 10, 13
ALLSTOTT 7	BENSON 11	BURCH 29	COOL 36
ALYEA 13	BEREL 7	BURKE 7, 13	COOPER 12
AME 12	BERNETT 31	BURNLEY 7	COPELAND 7, 12
AMI 12	BERRY 10, 13	BURT 2	CORBELLO 8
AMY 12	BIRGE 33	BUSH 25	CORNOS 13
ANDERSON 9, 12, 13,	BISHOP 9, 35	BUTLER 9	CORNOS 13
33, 35, 36	BLACKSHER 8	BYRD 6, 13	CORNWELL 26
ANDREA 20	PLAYLOCK 12	CAIN 1, 12	CORY 34
ANDREWS 43	BLUDWORTH 7	CALDWELL 9, 12, 13	COSTON 7
ANDRY 36	BODDIE 10	CALHOUN 33	COWAN 7, 10
ANSLEY 13	BOND 11	CALK 11	COWEN 18
ANTLEY 26, 46	BOON 10	CALLENDER 9	COWLING 28
ARMSTRONG 10	BOONE 10	CAMP 8	COX 8, 25, 46
ARNOLD 9, 15, 16,	BORDEAUX 8	CAMPBELL 30	COYLE 9
17, 19, 29, 20	BORDEN 10	CANNON 8, 13	CRABTREE 46
ARRANT 45	BOREL 11	CANTRELL 11	CRAIG 7
ARTHUR 13	BORGER 7	CAREY 26	CRAIGHEAD 25
ASHBY 31	BOSSIER 7	CARGAL 32	CRAMER 7
ASHLEY 11	BOTTING 7	CARGILE 32	CRAWFORD 35
ATKINS 7, 12	BOUNDS 12	CARGILL 32	CRENSHAW 14
AUSTIN 13, 23, 25,	BOURGEOIS 7	CARITHERS 15	CRIER 9
26	BOWERS 12	CARLTON 9, 10, 28	CRINER 12
BAGWELL 24, 26, 36	BOWLIN 9	29	CROSBY 26
BAGWELL JR 24	BOX 10	CARMICHAEL 13	CROSS 8, 30
BAILEY 4, 7, 9, 11	BOYD 9, 12, 30	CARMICKLE 10	CROW 9
BAKER 7, 10, 31	BOYER 10	CARMOUCHE 10	CROWELL 13
BALLARD 10, 13, 43	BRADFORD 7, 17	CARR 8, 9, 33	CROWNOVER 9
BANDY 35	BRADLEY 7, 12	CARROLL 8	CRUMP 9
BANKS 11, 15	BRADY 27	CARTER 8, 11, 12,	CULBERTSON 7
BARKLEY 12, 43	BRANLETT 10	21, 31	CULVER 7
BARLOW 11	BRANTLEY 8	CASEY 13	CUMMINGS 11
BARLOW, JR 13	BRANTLY 13	CASTLE 4	CUMMINS 9
BARNES 8, 9, 11, 12	BRASHER 7	CHAPPELL 15	CUNNINGHAM 8
36	BRAY 10	CHASE 10	CUPP III 8
BARNETT 7	BRAZZEAL 8	CHATHAM 7, 34	CURBELLO 8
BARNHILL 7	BREASELL 10	CHILDS 10	CURBELLO JR 8
BARNES 8	BRENNAN 7	CHINAULT 33	CURCI 4
BARRYMORE 4	BREWSTER 2	CHRISTIAN 12	CURREY 8
BASCH 4	BRIDGES 7	CHRISTIE 11	CURRIE 3
BASS 46	BRIGGS 10	CHUNN 9	CURRIELLO 8
BAUGH 12	BRITTAIN 1	CLARKE 33	CURRY 9, 13
BAYLES 32, 46	BROOK 12	CLAY 10	DABBS 10

DAMPIER 12
 DANIEL 13
 DAUGHERTY 8
 DAVIS 8, 10, 11,
 12, 26, 35, 50
 DAWSON 13
 de la FOSSE 8
 de la MIRANDE 8
 DEAL 27
 DEARMAN 13
 DeBOARD 13
 DECKER 34
 DeFEE 11
 DELHOMME 7
 DERRICK 11
 DESHAZO 31, 36
 DEVODE 13
 DEVORE 13
 DEVORICE 10
 DEWEY 10
 DICKSON 8, 12
 DIFFENDERFER 36
 DILL 12
 DILLARD 8
 DIMMITT 30
 DINGLE 5
 DISMUKES 9
 DIXON 7
 DOAK 33
 DODSON 13
 DOLL 4
 DOOLY 11
 DOSS 10
 DOSTER 43
 DOUGLAS 8, 11
 DOUGLASS 30
 DOZIER 28
 DREYFUSS 4, 5
 DROUET 34
 DUBOIS 13
 DULANEY 9
 DUMAS 26
 DUNCAN 7, 11
 DUNLAP 8
 DUNNANAY 11
 DUPRE 8
 DUPREE 7
 DUTY 11
 DYER 5
 DYKE 12
 EADS 28
 EARD 11
 EARLY 9
 EASON 7

EASTERWOOD 5
 EATON 8
 EDDINS 15
 EDWARDS 9, 12, 27,
 31
 ELKINS 9
 ELLERBE 4
 ELLIOT 9
 ELLIS 9
 ELSTON 9, 11
 ENGLISH 10
 ERLICH 4
 ESTERS 31
 ESTES 13
 EUBANKS 12
 EVANS 13
 EVERETT 12
 FAIRBANKS 11
 FALCONE 8
 FARMER 8, 34, 47
 FARRAH 8
 FARRAR 8
 FARRINGTON 8
 FAULKNER 22
 FEAZEL 22, 23, 25,
 26, 36, 47
 FEAZLE 23
 FENLAW 8
 FERGUSON 8, 12, 24
 FERRIER 10
 FIDLER 8
 FIEDLER 8
 FIELDER 7, 8
 FILLEUL 34
 FITZSALLIE 25
 FLOWERS 8
 FLOYD 11
 FORD 8, 9, 34
 FORREST 10, 11
 FORT 8
 FORTE 8
 FORTSON 11
 FOURNET 12
 FOWLER 11
 FOX 11
 FRANK 3, 4
 FRAZIER 8
 FREEMAN 7, 11, 13
 FULCO 4
 FULLER 8
 FULLILOVE 7
 FUNDERBURK 9
 FUDUA 13
 FURGERSON 12

FUTCH 8, 44
 FUTRELL 7
 GAINES 10
 GARLAND 10
 GARRETT 10
 GASTON 8, 11
 GATLIN 8
 GAZIANO 8
 GEISLER 34
 GELISPI 12
 GENTRY 11
 GIBBONS 13, 14
 GIBBS 31
 GIBSON 8, 9, 11
 GILBERT 12
 GILISPIE 12
 GILLMER 11
 GLASS 8
 GLENN 31
 GLISSON 13
 GOFF 8
 GOLDBERG 4
 GOLDEN 44
 GOODE 8
 GOODWIN 10, 12
 GOOLSBY 11
 GORDON 3, 5
 GORMAN 7, 8, 20
 GOUGH 10
 GOULSBY 11
 GOYNE 44
 GOYNE, JR 8, 20
 GRAFTON 27, 44
 GRANSBURY 12
 GRAVES 25
 GRAY 3, 11, 47
 GREEN 7, 8, 9, 11,
 13
 GREENE 9, 10
 GREENHOUSE 13
 GREER 9, 10, 12
 GREGORY 12
 GRESHAM 8, 24, 25
 36
 GRIFFIN 7, 8
 GRIFFITH 8
 GRIGG 8
 GRISHAM 8
 GRISSOM 8
 GRITZBAUGH 9, 24,
 32, 33, 35, 36
 GROVES 13
 GRUBBS 13
 GUMP 3

GUNN 14
 GUNTER 7
 GUYTON 36
 HACKBARTH 9
 HADEN 10
 HAIR 34
 HAIRE 34
 HALE 9, 12, 35
 HALL 9, 10
 HALLGREN 20
 HALLMARK 10
 HALVERSON 10
 HAMILTON 11
 HAMMACK 24
 HAMMETT 7
 HAMMONDS 12
 HAND 11
 HANKS 13
 HANNEHAN 9
 HANNEHANN 9
 HARDBERGER 9
 HARDEN 9
 HARDIN 9
 HARGROVE 8
 HARRELL 9
 HARRIS 7, 8, 10,
 12, 31, 33
 HARRISON 7, 8
 HARTWELL 8
 HARVEY 11
 HASTINGS 12
 HATCHER 7
 HAWKINS 9
 HAWTHORNE 13
 HAYES 10, 34
 HAYNES 11, 22
 HEAD 31
 HEARD 8, 44
 HEARN 13
 HELMS 9
 HELWIG 49
 HENDERSON 9, 20, 25,
 33, 50
 HENDRICK, JR 1
 HENDRIX 11
 HENNING 8
 HENRICHSON 10
 HENRY 4, 12, 13
 HERRING 9
 HEWGLEY 9
 HICKS 4, 9, 22
 HIGGINS 21
 HILBUN 13
 HILDRETH 9

HILL 7, 13, 31
 HILLIARD 10
 HILLYARD 29
 HILMAN 17
 HINTON 9
 HIRSH 5
 HITCHCOCK 9
 HODGE 7
 HOLCOMBE 9
 HOLDEN 12
 HOLLEY 47
 HOLLIS 44
 HOLLOWAY 10
 HOLMAN 11
 HOLMES 7, 21
 HOLT 11, 34, 35
 HONEYCUTT 23
 HOPE 9
 HOSKINS 13
 HOWARD 8, 10, 11
 HOWELL 13
 HUGGINS 12
 HUMPHREYS 14
 HUNT 11, 16, 18,
 20
 HUNTER 9
 HURLEY 14
 HUTCHINSON 5
 HUTSON 12
 HYDE 12
 ISBELL 9
 IVEY 10
 JACKSON 8, 13, 34
 JAMES 35
 JAMISON 12, 50
 JEFFERSON 6
 JEFFREYS 11
 JENKINS 7
 JENNINGS 9, 15, 18,
 20
 JOFFRION 10
 JOHNSON 8, 9, 11,
 13, 15, 15, 34,
 36
 JOHNSTON 9
 JOINER 26
 JOLLY 10
 JONES 8, 9, 10, 12,
 21, 24
 JORDAN 9, 12
 JULIAN 33
 KARCHER 13
 KATZENJAMMER 3
 KAUFMAN 5

KEENAN 10
 KEETH 9
 KELLEY 8, 11
 KELLOGG 11
 KELLY 8, 11
 KENNEDY 9, 10
 KENNON 8
 KERBO 12
 KERBOW 12
 KILGORE 7, 10
 KILPATRICK 34
 KIMBALL 8
 KING 8
 KINTZING 9
 KIRBY 7
 KIRKENDALL 11
 KIRTLEY 9
 KLING 9
 KNOX 12, 35
 KOCH 33
 KRAUSE 20
 KRAUSE, JR 9
 LaGRAND 10
 LAKE 36
 LAMB 8
 LAMBERT 9
 LANGLOIS 10
 LANGSTON 2, 5, 12
 LARK 11
 LASSITER 14
 LAUDER 12
 LAZARUS, JR 9
 LEATHERMAN 8
 LEDET 10
 LEE 13
 LeGRAND 10
 LEMAN 5
 LEMIEUX 9
 LEON 9
 LEONHARDT 11
 LEVY 3, 5
 LEWING 7
 LEWIS 7, 11, 13,
 36
 LIDDELL 4
 LILES 35
 LINDBLAD 9
 LINDSAY 4
 LINDSEY 11
 LITTLE 10
 LITTLEJOHN 8
 LOFLIN 35
 LOFTIN 9, 20
 LOGSDON 9

LON 9
 LONG 12
 LORENZ 11
 LOWERY 12
 LUCAS 36
 LUERA 49
 LUMLEY 13
 LYLES 13
 LYONS 12
 MACKEY 8
 MADISON 12
 MAHAN 12
 MAJOR 10
 MALCOLM 13
 MALLOY 7, 34
 MALONE 12
 MANRY 20
 MARBURY 12
 MARTIN 11
 MARTIN 3, 7, 8,
 35
 MATHEWS 9, 20
 MATHIS 9
 MAXWELL 8, 35
 MAYFIELD 11
 MAYO 35
 MAYS 11
 McABEE 34
 McAVOY 10, 20
 McBRIDE 9
 McCARTY 12
 McCLAIN 25
 McCORD 13
 McCORMICK 9
 MCCOY 10, 34, 47
 McDADE 11
 McDANIEL 12, 27
 McDONALD 11, 13
 McDUGALD 8
 McGATHEY 12
 McGUFFEY 10
 McILREATH 8
 McINTOSH 11
 McKay 9
 McKEE 7
 McKENZIE 8, 30
 McLAUGHLIN 8
 McLAWCHLIN 12
 McLEAN 25
 McLIN 13
 McMANN 8
 McMANUS 30
 McNEILL 7
 MEERS 10

MERCHANT 9
 MERRITT 9
 MERTZ 1, 2
 MEYER 10
 MILLER 4, 12, 35,
 36
 MILLS 34
 MITCHELL 5, 21, 33,
 34
 MIXON 9, 10
 MODLING 34
 MOFFETT 36
 MOFFITT 35
 MONIZ 11
 MONTGOMERY 8, 21
 MOON 11
 MOORE 9, 11, 13,
 31
 MORGAN 23
 MORRIS 7, 36
 MOSELEY 7, 9
 MOUGEOT 10
 MURPHEY 10
 MURPHY 9, 10
 MURRAY 8
 MUSE 10
 MUTH 10
 MYERS 32
 MYRES 13
 NAPP 10
 NASH 10, 20
 NEAL 12, 33, 50
 NEATHERLIN 11
 NEATHERY 13
 NEELY 30
 NEFF 36
 NEILL 10
 NELSON 10
 NEWHOUSER 10, 20
 NEWMAN 35
 NEWTON 34
 NICHOLS 7, 10
 NICKOLS 36
 NOBLES 13
 NOLAND 9, 12
 NORMAN 10
 NORRELL 11
 NORRIS 8, 30
 NORTON 10
 NORWOOD 12
 NUGENT 13
 NUTT 8
 O'BRIEN 10
 O'KELLEY 10

O'REILLY 10
 OAKLEY 12, 36
 ODELL 9
 ODOM 47
 OGILVIE 15
 OLIPHANT 10, 20
 OLIVER 10, 20
 OLSON 10
 ORTNER 10
 ORTON 13
 OSBORN 10
 OVERTON 23
 OWENS 44, 47
 OXLEY 7
 PADGETT 10
 PALMER 7, 9
 PANTLIK 10
 PARDUE 24
 PARKER 7
 PARTON 30
 PATE 9
 PATRICK 46
 PATTERSON 7, 10
 PAYNE 33, 35
 PEAR 24
 PEDDY, SR 10
 PEDERSEN 7
 PENDERGRASS 11
 PERKINS 4, 8, 30
 PETERS 8
 PETREY 10
 PETTIS 15
 PEYTON 5
 PHAEZELL 24
 PHELPS 4
 PHILLIPS 2, 3, 9,
 13
 PIERCE 10
 PILAND 11
 PITT 12
 PLEASANT 12
 PLUMMER 47
 POCKRUS 12
 POINDEXTER 10
 POLITZKA 9
 POOLE 1, 9
 PORTER 10
 POTTER 12
 POWELL 45
 PRATT 10, 20
 PREJEAN 7
 PREWITT 33
 PRICE 13
 PRINGLE 12

PUGH 12
 PURDY 8, 48
 PURNELL 8
 PUTNAM 10
 RACHAL 3
 RAINEY 10
 RAINS 10
 RANDOLPH 13
 RANS 9
 RATLEY 10
 RATTI 7, 36
 RAWLS 9
 RAY 27
 REA 27
 REAGAN 48
 REDDEN 26
 REEKS 9
 RENFRO 10
 REYNOLDS 10, 12
 RHODES 8, 13
 RICHARDSON 9, 10
 RICHBURG 8
 RICHMOND 10
 RICKMAN 11
 RIDLEY 8
 RIGGS 8
 RILEY 10
 RINAUD 10
 RITCHEY 11
 RIVERS 10
 ROACH 2
 ROAN 8
 ROBERSON 9
 ROBERTS 11
 ROBERTSON 10, 11
 ROBINSON 7, 13
 ROGERS 8, 9, 10,
 48
 ROPP 1
 ROSE 10, 20
 ROSS 13
 ROYE 45
 RUBENSTEIN
 RUDY 11
 RUSCO 36
 RUSHING 7
 RUSSEL 10
 RUSSELL 9, 12, 13
 RYLAND 13
 SABBATH 11, 20
 SADLER 13
 SAENGER 5
 SALONE 8
 SANDERS 21

SANDFORD 10
 SANSOM 10
 SAUER 9
 SCARBOROUGH 10, 28,
 29
 SCHAKELFORD 8
 SCHELEMI 7
 SCHICK 11
 SCHOFIELD 4
 SCOTT 8, 11, 33
 SEALS 12, 33, 50
 SEEWALD 13
 SELBER 5
 SEPELLO 32
 SEWARD 11
 SHARP 13, 33
 SHAVER 11
 SHAW 26
 SHELTON 11
 SHENEP 33
 SHEPARD 9
 SHEPHERD, SR 6
 SHEPPARD 9
 SHIELDS 10
 SHIPP 8, 13
 SHORT 33
 SHREVE 4
 SHROCK 13
 SHULL 10
 SIKES 45
 SILVER 32
 SIMS 15, 16, 19
 SINNOTT 9
 SKAINS 24
 SKINNER 8, 10
 SLAUGHTER 12
 SLOAN 8
 SMART 8
 SNISSON 17
 SMITH 3, 7, 8, 9,
 11, 12, 26, 28,
 45
 SMITHERS 13
 SMOTHERS 13
 SNIDER 12, 36
 SOUR 11, 20
 SOWERS 8
 SPEAR 33, 34
 SPEIR 34
 SPENCER 45
 SPILKER 11
 SPROLES 9
 SPUHLER 11
 SPURLOCK 10

ST JOHN 48
 STANBERRY 9
 STANLEY 12
 STANTON 9
 STAPLES 36
 STARNES 11, 31
 START 7
 STEEL 34
 STEERE 7
 STEINHAUS 9
 STEPHENS 7, 11, 12
 STEVENS 7
 STEWART 10, 34
 STILLWELL 36
 STINSON 9, 18
 STOKES 8
 STOLL 11
 STONE 10
 STOVALL 11
 STOVER 11
 STOW 9, 35
 STRANGE 11
 STRONG 8
 STROUD 29
 STUCKEY 7
 SULLIVAN 12
 SUMNER 13
 SUTTON 10
 SWARTZ 8
 SWEENEY 11
 SWINNEY 11
 TAITT 11
 TALLEY 12
 TATE 11
 TATUM 12
 TAYLOR 3, 4, 10,
 11, 13
 TEAGUE 11
 TERRY 7, 12
 THOMAS 6, 12, 25,
 26, 27, 36, 45
 THOMPSON 11, 12, 45
 THORNE 21
 THORNHILL 12, 13
 THORNTON 9
 TIDWELL 17, 18, 20
 TILLMAN 10
 TIMMERMAN 8
 TONER 10
 TOWNSEND 34
 TRABUE 7
 TRAMMELL 7
 TRAVIS 4
 TRAWICK 14

TRAYLOR 37
 TRIMBLE 37
 TRUE 12
 TRULL 12
 TUBBS 48
 TUCKER 11, 13, 37
 TUNGET 9
 TURBERVILLE 11
 TURBIVILLE 11
 TURNAGE 37
 TURNER 7, 38
 TWITTY 31
 TYLER 12
 UNRUH 49
 USREY 38
 VANCE 9, 15, 16
 VANCE, JR 18
 VARNER 10
 VAUGHAN 12, 13
 VAUGHN 12, 13
 VANTER 7
 VESSELL 12
 VICKERS 11, 35
 VINES 7, 12
 VORDENBAUMEN 3, 4
 VOTLUCKA 9
 WADE 12
 WAFFER 38
 WAGNER 8
 WALKER 8, 11, 12,
 38
 WALL 26
 WALLACE 8, 13, 38,
 39
 WALLER 39
 WALTERS 10
 WALTHALL 7
 WALTON 27
 WANZA 39
 WARD 5, 8, 11, 12
 39, 50
 WARE 15
 WARFIELD 11
 WARREN 10, 34, 39,
 50
 WASHAM 39
 WASHINGTON 39
 WATSON 8, 39
 WATTS 7
 WEBB 7, 38, 48
 WEEKS 11
 WEEMS 13
 WEILAND 11, 20, 49
 WELCH 26, 40

WELDON 13
 WENCHALOUS 9
 WESSON 8
 WESTFALL 7
 WESTON 11
 WESTPHALL 7
 WHATLEY 11, 20
 WHEELIS 40
 WHEELER 40
 WHITE 5, 11, 14,
 40
 WHITEHEAD 11
 WHITTLESIE 35
 WIGGINS 7, 48
 WILCHER 40
 WILEY 7
 WILHITE 8
 WILKINS 40
 WILL 40
 WILLIAMS 8, 10, 11,
 12, 33, 36, 41,
 42, 50
 WILLIAMSON 13
 WILLIFORD 7
 WILLIS 10, 11, 13
 WILSON 2, 7, 9, 11,
 12, 22, 26, 35, 42
 WILTCHER 42
 WINBERLY 13
 WINBURY 13
 WINDHAM 11
 WINES 42
 WINTERS 5, 13
 WISE 9, 24, 33
 WITT 11
 WOOD 9, 33, 35
 WOODS 11, 12, 20,
 21, 33, 43
 WORSHAM 13
 WREDE 12
 WRIGHT 7, 9, 13, 43
 WYATT 9
 YARBROUGH 13
 YATES 13
 YEASER 8, 11
 YOUNG 12, 43
 YOUNGBLOOD 12
 ZAHN 12
 ZODIAG 4

