

Non-Profit Org.
U. S. Postage
PAID
Shreveport, LA
Permit #562



VOLUME 33

SECOND QUARTER 1999

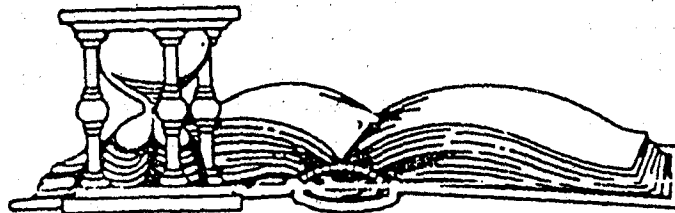
NUMBER 2

PUBLISHED QUARTERLY BY
ARK-LA-TEX GENEALOGICAL ASSOCIATION, INC.

P.O. BOX 4462
SHREVEPORT, LOUISIANA 71134

TABLE OF CONTENTS

HISTORY OF UNION PARISH, LOUISIANA	51
ALTGA COMMITTEES	52
HISTORY OF FARMERVILLE, LOUISIANA	53
SEARCHING FOR CALVIN	59
HENDERSON-BURTON AHNENTAFEL	65
HOW DID COLONEL WOLFORD LOGSDON GET HIS WIFE?	72
1898 BOSSIER PARISH VOTERS ROLLS	74
DR. ELISHA JONES HALL	82
MOTHER' LOVE	83
IN MEMORY-ANNA BELL HARRIS MINER	84
MEMBERSHIP LIST 2ND QUARTER 1999	85
A MONUMENTAL PROJECT	88
BOOK REVIEWS	90
QUERIES	92
DAR BOOKS DONATED TO LIBRARY	93
JOLLY'S CHAPEL CEMETERY	94
SHILOH CEMETERY	99



THE GENIE is published quarterly. Each member receives four issues for each year of membership. All material published in THE GENIE is compiled and contributed by the members. THE GENIE exchanges periodicals with other genealogical organizations publishing data of general interest. We regret that we cannot exchange with limited family organizations, but invite them to send samples of their publications for brief review, since many of these family organizations are of great value in information on the family covered by them.

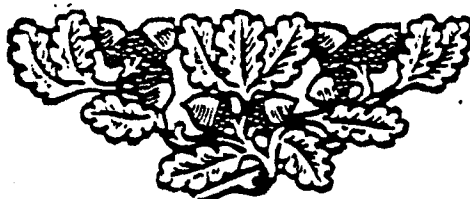
All members of the staff of THE GENIE are volunteers:

PRINTING.....James & Patsy Oliphant, Roy Henderson, Victor Rose.
 TYPING & COMPUTER INDEXING....Ethel E. Krause.
 BROCHURES FOR SEMINARS, etc...Chris Oliver.
 QUERIES.....Isabelle Woods.
 BOOK REVIEWS.....Herman Weiland.
 LABELS.....Michael Broussard.
 BULK MAILING.....Carl & Pat Hallgren.
 COLLATING.....Lillian Hope, Ethel Krause, Herman & Veretta
 Weiland, Constance Whatley, Reed Mathews.

* * * * *

BOARD OF DIRECTORS 1999

Allan Barlow, Jr.	868-1681	President
Marguerite J. Loftin	746-4598	1st Vice President
Willie R. Griffin	631-6031	2nd Vice President
Constance Whatley	861-4336	Recording Secretary
Victor C. Rose	687-3673	Corresponding Secretary
Ethel E. Krause	746-3125	Treasurer
Roy L. Henderson	861-7449	Trustee
Vernelle Rose	687-3673	Trustee
Sharron McAvoy	868-4723	Trustee
Betty Jon Gorman	868-2807	Trustee
Reed C. Mathews	868-0036	Past President



The ARK-LA-TEX GENEALOGICAL ASSOCIATION, Inc., is a non-profit, non-sectarian, non-political, educational organization dedicated solely to the cause of genealogy, which includes the following purposes: to collect, preserve and make available genealogical materials, documents and records; to encourage an interest in genealogy and to sponsor educational programs for its development; to promote and publicize the City of Shreveport, Louisiana, as a major genealogical research center for genealogists and historians; to cooperate with and assist all other genealogical, historical, patriotic societies in the furtherance of these purposes; to compile and publish a quarterly composed of records and data related to the Science of Genealogy.

REGULAR MEETING: Second Saturday of each month, 1 P.M. to 4 P.M. at the Randle T. Moore Senior Citizen Center, 3101 Fairfield Ave., Shreveport, LA, with the exception of the second Saturday in August when the annual seminar is held. Time and place announced later.

MEMBERSHIP DUES: 1 Jan to 31 Dec-Individual \$12.50, married couple \$15.00. All members to receive four issues of THE GENIE, which is published quarterly.

BOOK REVIEWS: Reviews of books of genealogical interest will be published in THE GENIE as donated by publisher or author. These books are then made available to the public through the Genealogy Department of Shreve Memorial Library, as is all other genealogical material of the Ark-La-Tex Genealogical Assn.

QUERIES ARE FREE: They must not be over 70 words and must be typed or plainly printed.

This publication is indexed in the PERiodical Source Index published by the Allen County Public Library Foundation, Ft. Wayne, IN.

ARK-LA-TEX GENEALOGICAL ASSOCIATION IS NOW ON THE INTERNET! Webb address is www.softdisk.com/comp/aga.

* * * * *

ARK-LA-TEX GENEALOGICAL ASSOCIATION, INC.,
PRESENTS
AN INTRODUCTORY CLASS ON GENEALOGICAL RESEARCH
INSTRUCTED BY ITS MEMBERS

“HOW TO BEGIN RESEARCHING YOUR FAMILY TREE”

ON
SATURDAY, MAY 15, 1999
9:15 A.M. TO 5:15 P.M.

IN THE
EAVES ROOM
SHREVE MEMORIAL LIBRARY
424 TEXAS STREET
SHREVEPORT, LOUISIANA 71101

LEARN

- ◆ *HOW TO BEGIN YOUR SEARCH*
- ◆ *HOW TO USE U. S. CENSUS RECORDS 1790-1870*
- ◆ *HOW TO USE U. S. CENSUS RECORDS 1880-1920 SOUNDINDEX*
- ◆ *HOW TO CONDUCT ORAL INTERVIEWS*
- ◆ *HOW TO USE COUNTY COURT HOUSE RECORDS*
- ◆ *HOW TO USE COMPUTERS IN YOUR GENEALOGY*

REGISTER EARLY. SEATING IS LIMITED.

REGISTRATION BEGINS AT 9:15 A.M. IN THE EAVES ROOM OF SHREVE MEMORIAL LIBRARY. A PACKET OF MATERIAL NEEDED DURING THESE CLASSES WILL BE FURNISHED AT A COST OF FOUR DOLLARS (\$4.00).

NO LUNCH WILL BE SERVED. YOU MAY BROWN-BAG YOUR LUNCH OR GO OUT TO LUNCH.

PLEASE CALL MR. VICTOR ROSE AT (318) 687-3673 IN SHREVEPORT, LA, FOR ADDITIONAL INFORMATION ON THESE CLASSES OR FOR DIRECTIONS TO LIBRARY.

Mail registration form with check or money order in the amount of \$4.00 made payable to:
Ark-La-Tex Genealogical Association, Inc., Post Office Box 4462, Shreveport, LA
71134-0462.

NAME _____ PHONE _____

ADDRESS _____

CITY _____ STATE _____ ZIP+4 _____

ARK-LA-TEX GENEALOGICAL ASSOCIATION, INC.
ANNUAL GENEALOGICAL SEMINAR
PRESENTS

"LOCATING YOUR CONFEDERATE FOREBEAR"

PEGGY FOX SPEAKING ON

- ◆ STATE TROOPS, HOME GUARD, AND STATE MILITIA
- ◆ CONFEDERATE STATES OF AMERICA TROOPS (CSA)
 - ◆ CONFEDERATE GOVERNMENT TROOPS
- ◆ SOURCES: *PENSIONS, CAPSULE HISTORIES, STATE ARCHIVES, NATIONAL ARCHIVES, SPECIAL COLLECTIONS, LOCAL LIBRARIES*

AND

JIM WHITTINGTON RE-ENACTING

- ◆ GETTING READY FOR BATTLE IN THE CIVIL WAR

FRIDAY, AUGUST 13, 1999 SATURDAY, AUGUST 14, 1999
7:00 P.M. - 9:00 P.M. AND 9:00 A.M. - 5:00 P.M.

AT THE RAMADA INN, SHREVEPORT
 5116 MONKHOUSE DRIVE
 SHREVEPORT, LA 71109

WITH A SPECIAL ROOM RATE OF \$59.00 PLUS TAX FOR OUT-OF-TOWN GUESTS

Peggy Fox is a nationally recognized lecturer and has conducted many workshops on various Civil War topics. Her ancestors arrived in Hill County, Texas, from Tennessee and Mississippi during the late 1860's. Having descendants of Confederate soldiers in her family tree, she is currently the Assistant Director of the Confederate Research Center, Hill College, Hillsboro, Texas. Mrs. Fox is President of the Hill County Genealogical Society, and a member of the Hillsboro Historical Society, Hill College Century Club, Hillsboro Heritage League. She is Saturday's featured speaker.

Jim Whittington is an entertaining speaker who uses historical re-enactment in his presentations. On Friday he will wear a Confederate soldier's uniform and will re-enact a Confederate soldier preparing for battle. Mr. Whittington was in the movie, "Gettysburg."

Various vendors will have genealogical books and material available for sale. Please call Mrs. Ethel Krause at (318) 746-3125 if you need additional information concerning this Seminar.

A registration fee of \$30.00 includes lectures with light refreshments (August 13) and lunch (August 14). The registration fee without lunch on Saturday is \$20.00. Registration for Saturday's lectures begins at 8:00 a.m. Deadline for the submission of four (4) surnames: August 1, 1999. Register early. Seating is limited.

Mail registration form with check or money order (\$30.00 with lunch; \$20.00 without lunch) made payable to the Ark-La-Tex Genealogical Association, Inc., Post Office Box 4462, Shreveport, LA 71134-0462.

NAME _____ PHONE _____

ADDRESS _____

CITY _____ STATE _____ ZIP+4 _____

SURNAMES: (1) _____ (2) _____

(3) _____ (4) _____

HISTORY OF UNION PARISH, LOUISIANA

(This article was furnished by our member in Bellaire, Texas, Mrs. Sherry Gritzbaugh.)

Union Parish, with an area of 579,840 acres, is located in the north-central part of the State of Louisiana about equidistant from the east and west boundaries of the State. The northern boundary is the Arkansas-Louisiana State line.

In 1803, when the United States bought the Louisiana Territory from France, the Territory of Orleans—now the State of Louisiana—was divided into nineteen parishes, the most northerly of which was Ouachita. In 1839, Union Parish was created out of the northern part of Ouachita Parish and Farmerville was made the Parish Seat.

It is doubtful if many parishes in Louisiana has as colorful a history as Union Parish has. In 1790, one John Honeycutt, pushing across the wilds of Alabama and Mississippi, was granted a tract of land by the Spanish Government in what is now Union Parish. Learning from the Indians that a family of white people the Feazels, had settled on Corney Bayou fifteen miles away, he decided to visit them in search of a wife. On reaching the wilderness home of these people, he boldly asked his neighbor for the hand of one of his daughters in marriage. The daughters were lined up and John Honeycutt made his pick. From this union has come many of the important citizens of this part of the State. (Mrs. Gritzbaugh disputes this part of this article, as she has done extensive research on the Feazel family.)

Conservation of natural resources was uppermost in the minds of Union Parish's first Police Jury—John N. Farmer, Jephtha Colvin, Needham Bryan, Phillip Feazel, Matthew Wood, Bridges Howard and D. P. A. Cook—as indicated by the first ordinance they enacted which is as follows:

"Be it ordained that any person or persons shall be prohibited from the practice of killing deer for the mere purpose of the skin or peltry and leaving the flesh in the woods."

Among the earliest acts of the Police Jury was appointment of Education Commissioners—John N. Farmer, John O. Feazel, W. C. Carr and Wiley Underwood.

The pioneers of Union Parish were mostly Baptist and Wesleyan Methodist. Old records indicate that they held services out of doors, in homes, at the courthouse and in lodge halls.

The streams in Union Parish—Corney, D'Arbonne and De Loutre—and the Ouachita River played an important part in the pioneer days of the parish. By means of steamboats and river packets, many of the earlier settlers pushed up these streams into the wilderness. Loch Lomond, on the west bank of the Ouachita River, was one of the first, if not the first, settlement in the parish.

In 1870, J. M. Rabun founded the "Union Record", the first newspaper in the parish.

Union Parish can make a number of unique claims. One of these was the furnishing of the romance that led to the writing of the popular old song, "In the Gloaming". It was at Marion that the tragic romance occurred that caused Anna Portesque Harrison to write the beloved melody. Elias George, one of the foremost Baptist preachers, built the first large house in Marion in which Anna, who had come from New Orleans as the music instructor for the children of Reverend George, wrote "In the Gloaming". This house still stands today.

The honorable L. E. Thomas, born in Marion in 1866, was one of the illustrious sons of Union Parish. He was a descendant of the Reverend Samson B. Thomas and Reverend Elias George. He became speaker of the House of Representatives of Louisiana, State Bank Examiner, served as Mayor of Shreveport, and Grand Master and Grand Secretary of the Grand Lodge of Louisiana, Free and Accepted Masons.

Union Parish is the birthplace of four governors for two states. William Wright Heard, Governor of Louisiana, 1900-04; and Ruffin G. Pleasant, Governor of Louisiana, 1916-20, were both born near Shiloh and attended school in Farmerville. George W. Donaghey, Governor of Arkansas, 1908-12, was born near Oakland, and Tom J. Terral, Governor of Arkansas, 1924-26, was born at Holmesville.

Another unique fact in Union Parish history is that the first telephone line in the entire South was constructed by Colonel Daniel Stein from his store at Stein's Bluff to Farmerville.

The incorporated towns of Union Parish and dates of incorporation are as follows:

Farmerville.....March 15, 1842
 Bernice.....April 18, 1899
 Marion.....January 13, 1909
 Junction City.....March 24, 1913
 Spearsville.....June 16, 1960

* * * * *

ALTGA COMMITTEES

<u>COMMITTEE</u>	<u>CHAIRMAN</u>	<u>MEMBERS</u>
Hospitality	Winona Clarkson 686-8338	Thelma Sabbath
Publicity	Betty Gorman 868-2807	Carl Hallgren
Telephone	Betty Kintzing 221-2988	Thelma Sabbath, Lillian Nash, Sharron McAvoy, Vernelle Rose, Constance Whatley, Ruth Mann
Finance	Ethel Krause 746-3125	Betty Gorman, Dale Jennings Isabelle Woods, Victor Rose, Betty Gorman, Sharron McAvoy
Librarian	Veretta Weiland 746-3811	Herman Weiland, Isabelle Woods
Programs	Marguerite Loftin 746-4598	
Historian	Roy Henderson 861-7449	
Resale	Dale Jennings 965-9342	
Exchange	Herman Weiland 746-3811	
Education	Victor Rose 687-3673	Willie Griffin, Marguerite Loftin
Web Page	Chris Oliver 636-5669	
Seminar	Marguerite Loftin 746-4598	Victor Rose, Ethel Krause, Chris Oliver, Willie Griffin

* * * * *

History of Farmerville

(This article was originally submitted by ALTGA member, Ronald C. Kennedy, 7627 Fernbrook Lane, Houston, Texas 77070-3720. It was never determined where this article had been found. This was in 1995. Later we received extensive research by Sherry Gritzbaugh, 4507 Verone, Bellaire, Texas, 77401-5513, and when questioning her about this article on Farmerville, LA, she told me that it was printed in the 1960's by the Soil & Conservation and Natural Resources Department of Union Parish, LA. Although the story about John Honeycutt is very interesting, Mrs. Gritzbaugh says it is not true, and she provides the following information: George Feazel had three daughters, Rachel was married. Sarah Elizabeth was only 9, a little girl, the youngest daughter. Mary was born about 1800, and married John Honeycutt in 1814, on the 31st day of March. Rachel was born about 1792. In 1810, she married Mr. Dutton and he died in 1818. She married Mr. Sterling as her second husband. Sarah Elizabeth was born 1st of November 1807. She married 1st E. S. Thomas Grisham. He died and she married A. C. McAfee. (He was a bigamist.)

Out of the wilderness grew the now thriving little town of Farmerville, seat of Union Parish, in the northeastern part of Louisiana. A clean, modern, progressive town, the largest in the parish with a population of 2,727 (1960 Census), with all the conveniences known to modern man, it is a far cry from its humble beginnings. Many of the people living there now are descendants of those first settlers who blazed the trail for our new America.

In the year 1790, the first grant of land in the territory of Union Parish was made by the Spanish government to a trapper, John Honeycutt. He settled in the land that was full of wild life and ideal for his trade. After he had received his land grant, he began to eke out his living here with only Indians as his neighbors.

"Then, one day, a few years later, after he first entered this section, he moved a roving band of Indians who told him of another family that had settled in this territory. Putting his coonskin cap on his head, and with his flint-lock in the crook of his arm, Honeycutt set out to follow the Indians' direction. He found an old settler by the name of Feazel with a 'house full of girls". The story goes that he asked the old father for the hand of one. The old man lined the daughters up for Honeycutt's inspection. *see above.



"I'll take this 'un" exclaims John Honeycutt, pioneer hunter and trapper and Union Parish's first settler, as he chooses a wife from one of the Feazel girls, in this artist's conception.

From Alabama, Georgia and the Carolinas came the adventurers. Soon there were homesites along the Bayous D'Arbonne, Corney and De Loutre, in the "Ouachita Settlements" section, as the Union Parish territory was designated. Many coming from Alabama up the Ouachita River from Fort Miro to claim their future homes disembarked at a spot which became known as Alabama Landing, a name that still survives. A well-known resort for fishing, boating and picnicking, it is about twenty-five miles east of Farmerville.

CREATION OF UNION PARISH

Not until 1839, was Union Parish created out of the northern part of Ouachita Parish; and in that year a town was laid out for the parish seat. There was some argument as to the name of the town. Matthew Wood, a first settler and president of the first police jury, donated the land, the highest spot in the parish, and many wanted to call it Woodville in his honor. Wood, however, did not wish this, and the town was named Farmerville after a family of that name, probably Miles Farmer, local planter and elder in the Baptist Church, who had helped organize the Concord Baptist Association in 1832. He was the father of J. N. Farmer, police juror and W. W. Farmer, the latter of whom was a surveyor, justice of the peace, lawyer, and later lieutenant-governor of the state. A monument erected by the Louisiana Legislature in 1855 stands at his grave in the Farmerville cemetery.

These early trails through the forests of Union Parish are today splendid roads and highways. Yet a good deal of the virgin forest still remains.

On May 16, 1839, the first step toward the establishment of a parish government was made. The first police jury, composed of J. N. Farmer, Jephtha Colvin, Phillip Feazel, Matthew Wood, Needham Bryan, Bridges Howard and D. P. A. Cook, met at the home of William Wilkerson, which was located one mile west of Farmerville at the mouth of Bayou Corney. This point became known as Fork Ferry.

The first leaders of the parish had the difficult task of setting up the parish government, and selecting the town site at this first meeting. The police jury named Matthew Wood as president, Thomas Van Hook as clerk, W. C. Carr as sheriff, Claiborne M. Smith as recorder. Thomas Van Hook was the first district court clerk and John Taylor, the first judge in the parish. They made a resolution at this first meeting which said, in effect, that the parish seat must be located within five miles of the geographical center of the parish. As has already been stated, Matthew Wood donated the land for the town and the courthouse.

In the second meeting, May 17, 1839, the police jury passed the following ordinance: "Be it ordained by the Police Jury of Union Parish, Louisiana, that the seat of justice in and for Union Parish, Louisiana, shall be called by the name of Farmerville."

There was still much work to be done. For example, on June 3, the police jury met to appoint Thomas Greer, David Ward and James Roane as assessors for the year 1839.

At this time there was also formed an unusual sort of ex-officio police organization known as the "patrol". Thomas Greer and J. M. Wilhite were appointed patrolmen for Ward One. It was their duty to see that none of the

Negro slaves left the plantation to which they belonged without a proper pass, and the "patrol" also placed slaves under a curfew law stipulating that they be back at their masters' plantations by a certain hour.

A committee was appointed to select and lay out a public road from Farmerville to some point on the Ouachita River. This road reached the river at Ouachita City. Hundreds of farmers hauled their cotton, a basic crop of the parish, down this road, and large shipments of cotton were exported down the river annually.

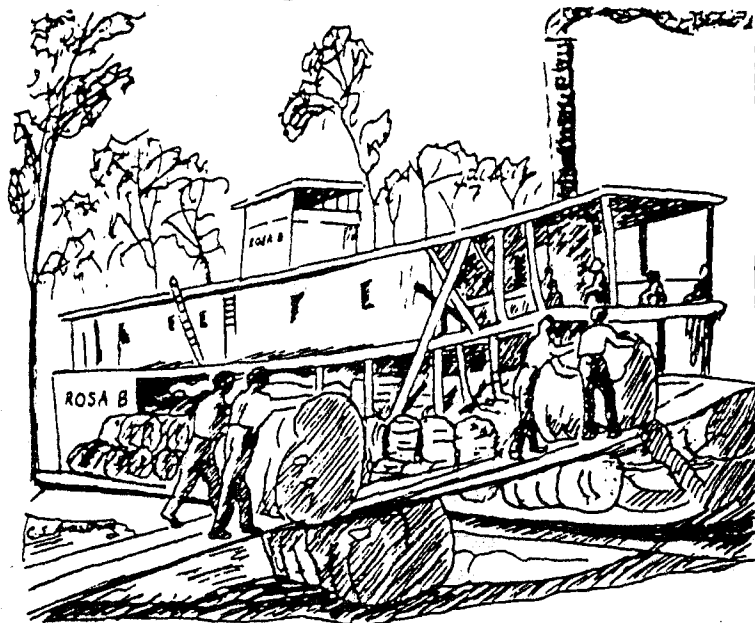
The police jury met again on June 14 for the purpose of laying out the town of Farmerville. At this meeting, plans were made to establish a ferry at the mouth of Bayou Corney. This was to be known as Fork Ferry. It was proposed that a road be constructed to the ferry and another from Farmerville to Arkansas.

On September 21, the body met to pass on the erection of the first of Union Parish's four courthouses. They also had to consider the building of a jail. Building contracts on both the courthouse and the jail were let to the lowest bidder.

The stopping points of the boats from Monroe on up the D'Arbonne were, in order of stops, White's Ferry, Harland's Bluff, Turkey Bluff, Ward's Bluff, Rugg's Bluff, Moseley's Bluff, Farmerville Landing and Stein's Bluff. Sometimes they would go farther up Corney than Stein's Bluff, as high as Killgore's Landing and Cobb's. There was also a Shiloh Landing above Stein's Bluff.

Since cotton constituted most of the outgoing freight in this section, great warehouses were constructed, the first one being built at Fork Ferry. Another large structure was built by D. Stein at Stein's Bluff.

A typical scene in those days was the "Rosa-B" docked at the Farmerville Landing on Bayou D'Arbonne during the cotton season.



This is the "Rosa-B" taken during the steamboat days at the Farmerville Landing on Bayou D'Arbonne in 1897. On the top deck are John W. Taylor, Captain O. Baughman and J. D. Baughman.

"The heyday of the steamboat era in Farmerville, the day when cotton ruled and the Bayous D'Arbonne and Corney flowed southward with river steamers riding upon their crests, the days when a constant commerce of cotton streamed through Farmerville onto these steamers-these days are no more."

CULTURAL INFLUENCES

Shortly after the Civil War when the South was first beginning to feel the results of the Reconstruction Era in 1869, Farmerville's population was small. The war had driven many of its citizens farther west and had scattered others. Records show that around one hundred people lived within the limits of the township in 1869.

Journalism in Farmerville had its beginning when J. M. Rabun founded the "Union Record" in 1870. This was the only paper in the parish at the time. According to some, there was an earlier paper, "The Inquirer", founded in 1855, but no traces have been found to prove this. In 1878, the "Union Record" was sold to J. E. Trimble and the name was changed to "The Gazette", as it is today. Judge Trimble adopted the following motto for his paper: "Be just and Fear Not." This same motto was used by Emmett J. Lee and Ben M. Lee, editors for many years, and by the present editors, Fred White and Carlton White, who purchased the paper in 1963.



The Knights of Pythias hall stood in Farmerville many years ago on the corner next to where the Union Publishing Company is located today. It was used for many social occasions and for the balls during that time.

In 1878, "The Baptist Messenger" was published by the Reverend S. C. Lee, one of the leading Baptist ministers of the parish. It had a large following and continued in Farmerville until 1884, when the editor moved to Arcadia in Bienville Parish. He continued the publication until his death in 1886.

In 1882, "The Cast Plow" was founded in Farmerville by W. P. Chandler. It was a weekly newspaper established for the purpose of displaying to the public Mr. Chandler's knowledge of foundry work. This publication lasted only a few months.

"The Home Advocate" was founded in February 1885 with T. C. Lewis as editor. Both Mr. Lewis and Judge Trimble of "The Gazette" were Democrats, but a controversy arose between them and they could never agree as to what views should be taken on important issues of the times. There was such hostility between them as to cause each one to arm himself, each wanting to shoot the other. Popular support of "The Gazette" caused "The Advocate" to die and Mr. Lewis moved to Ruston, where later, his son founded "The Ruston Leader".

Other efforts toward journalism in Farmerville were a newspaper (1895) "North Louisiana Appeal", a Negro Journal, "The Afro-American" (1895), "The Herald"; a monthly pamphlet (1902). All were unsuccessful and only one paper "The Gazette" remained alive.

The death of Judge Trimble marked one of the great tragedies in the history of Farmerville during the latter part of the 19th century. A political feud had developed between the editor and James A. Ramsey, another prominent citizen. Ill feeling grew and on December 20, 1887, they met on the main streets of Farmerville, hot words were spoken, and both men drew revolvers. Five or six shots were fired and the two men fell dead.

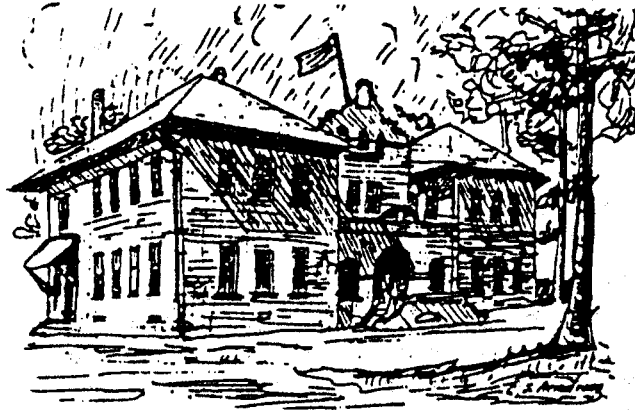
These pioneers of Farmerville did not overlook the education of their youth. The first police jury appointed John H. Feazel, W. C. Carr, J. N. Farmer and Wiley Underwood as Commissioners of Public Schools. Subsequent police jurors also considered the task of education a major one. Farmerville High School was organized in the early 1900's. It was preceded by several academies, including the Union Male and Female Academy and the Farmerville Institute.



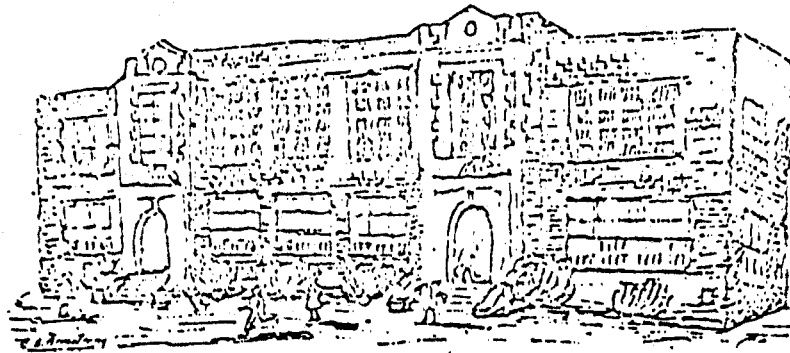
The Farmerville School, founded in 1859 as the Farmerville Institute, was located on the same site as the Farmerville High School, which replaced it in 1909.

The present Farmerville High School was organized in 1908, and a brick building was constructed in 1909. E. E. Keebler was the first principal. The faculty included Miss Bertha Cobb and Mrs. Emma Sanders. There were five on the faculty and about one hundred fifty pupils. Mr. Sherwood Smith, one of the four graduates of the first graduating class still resides in Farmerville.

The Home Economics department was added in 1914 with Miss Lillie Mae Sentell the first teacher. The department is now occupying an attractive building constructed in 1949.



Farmerville's first high school building, constructed in 1909, was used by both high school and elementary grades until 1925, when the high school moved into its new building. The elementary grades continued to use it for over thirty years. It was razed in 1963. (The building looked like this at first; later the front was altered and the auditorium upstairs was made into classrooms.



This building was used by the Farmerville High School from 1925 until 1950, when the new high school building was completed, and was then used by the elementary grades until 1959. It was demolished in 1965. It stood on the west side of the high school gymnasium.

The gymnasium, which can seat 3,000 people, was added in 1930. The cafeteria was completed in 1949 at the approximate cost of \$46,000. A new high school building was completed in 1950, valued at more than \$300,000, during the principalship of J. G. Elliott, now parish superintendent of schools. The latest addition was a modern elementary building, constructed in 1959 at a cost of \$115,000.

(To be Continued)

SEARCHING FOR CALVIN

By Dale Jennings

This depicts the fifth and ongoing effort in the search for Larri's Vance ancestor. Dale and Larri Jennings live at 194 Vance Road, near Benton, Louisiana.

William Calvin Vance was said to have been born at Spartanburg, South Carolina, in 1840, and raised by Vance relatives. Sent to the Citadel, he graduated in 1861 just in time to go off to Virginia with his hometown "Greenwood Secession Guards." He served as their captain, and served the Confederacy faithfully until the surrender. Then, as did many other Laurens and Abbeville County Vances, he migrated directly from South Carolina to Bossier Parish in Louisiana. He died, a successful planter, at Shreveport in October, 1898, leaving his widow, Nina, and three grown children; Cal, Jr., Larry and Estelle. Larry Watts Vance, the middle born, was struck down tragically at age twenty-two, the month after the death of his father. He left no descendants to help me in my search for Calvin's identity. Larry's legacy would be his name, which was bestowed upon his brother's daughter, and in turn, her daughter. Larry Arnold (Vance) Hunt bore her name proudly, but her daughter, midway through life to present, feminized hers to "Larri". Uncle Larry's middle name could have been a naming pattern clue to his father's ancestry, but that was not to be. Research disclosed that "Watts" was a name in his mother's Vance family background. If there is a precedent for "Larry," it is yet to be discovered.

The murder of Larry Vance on November 28, 1898, with very little doubt, received more local press than any other incident of that time. Family legend is that he had gone on that date, a Monday, from Bossier Parish's Riverside Plantation into Shreveport on a financial matter pertaining to the death of his father. It was believed that his killers had expected him to return to the family plantation, which he was managing, with a large sum of money. The newspapers of the day kept abreast of the unfolding story. Young Mr. Vance was found at his home the next morning near death from a brutal attack with an ax. He was transported to Shreveport by special train brought in by his brother. There was little that Doctor Schumpert could do, and he died that Friday at his mother's Fannin Street home without regaining consciousness. A committee of six appointed by the citizenry in Benton had begun its investigation. Bedney Hearne, one of Larry's workers, and John Richards, came under suspicion. It was learned that the two had in the early morning hours, following the murder, tried to rent or borrow a mule for transportation to Shreveport. Witnesses in Caddo Parish told of a spending spree; attempts to establish an alibi; and self-incriminating allusions to the atrocity across the river. Upon questioning, Hearne confessed that he and Richards had planned and carried out the crime. Hearne said that they had traveled from Shreveport by train that evening. He, getting off at Vanceville, while Richards had ridden on to Willow Chute. And, that they had met on the road and gone to the Vance plantation, where they assaulted and robbed Larry Vance. The Bossier Banner

reported that Richards did not confess, but his implication by Hearne and corroborative evidence proved his guilt as well. The committee reported to a citizens' meeting held in the court house and attended by some 500 citizens--all parts of the parish being represented. And, "After calm and mature deliberation, it was decided that as the evidence was positive, punishment should be sure and just--the assassins should be hanged." An execution committee of twenty-five well known citizens was appointed. The two men were taken from the Benton jail and before an estimated 800 witnesses, hanged from a large oak tree just north of town. The Banner assured its readership that the voice of the people--a law higher than statutory law--had been expressed. The Times applauded the swift punishment carried out in Bossier Parish, while the Journal was nonjudgmental, observing that, "Both died game." The Progress questioned why, if their guilt were so evident, the process could not have been carried out with legal formality, especially as that had been the clearly expressed desire of Mrs. Vance, the mother.

The services for Larry Vance were conducted from the family residence on Fannin Street next door to St. Marks Episcopal Church by Doctor Dalzell. A northern blizzard with freezing rain did not deter a large crowd from attending the funeral. The Evening Journal had announced that the internment would be in the family lot in the "Old Cemetery." Larry was not buried in Oakland Cemetery with his grandmother, half-brother and father, but was laid to rest in the "new cemetery" (Greenwood Cemetery). The inclement weather may have somehow influenced this decision, or perhaps the recent deaths threatened to overwhelm the family's allotted space in the old cemetery.

Larry's great aunt Estelle Vance was the youngest of Calvin and Nina's children. To say she was in jeopardy of becoming a spinster is not overstated; but, just before turning thirty-four, Estelle was married to Mr. McFarland. She had no children. But, might she have, during her illness-shortened lifetime, allowed some hint as to the identity of her paternal grandparents? Miss Vance was described variously by the local newspapers as being a socially prominent, popular and accomplished young lady. After Calvin's death, she continued to live with her mother at 310 Fannin Street. This, from the Shreveport city directories in the first decade of the new century. James K. McFarland first appears in the city directory in 1907, as "ins eng" with the "CC & L Co" and "Long-Bell Lbr Co." By 1909, he had risen in stature to vice-president of the Chase-McFarland Insurance Company. The 1910 directory identifies him as both insurance company vice-president and inspector for the Central Coal and Coke Company. From 1907 through 1910, he is shown to room at 310 Fannin Street. While Nina Vance was not compelled financially to take in lodgers, she was, by family legend, close with a dollar. Or, was Mr. McFarland a relative?

The Bossier Banner on February 16, 1911, announced that, "Mr. J. K. McFarland and Miss Estelle Vance, both of Shreveport, were united in marriage at Christ Church in New Orleans Tuesday afternoon. Immediately following the ceremony they left for New York on their wedding tour." The Shreveport directory of 1911 finds them residing

together at 310 Fannin Street. The McFarlands must have been beckoned by the allure of the big city; by 1912, they are gone from Shreveport and living in New York. It would be several years before Nina would go to live with her daughter in New York City. She is missing from the city directory in 1918, but reappears in 1919. In 1920, Nina sold her Fannin Street home to reside with the McFarlands. Estelle died on December 3, 1921, after what was described as a lingering illness. Her remains were returned on the Vicksburg, Shreveport and Pacific for burial in Shreveport. Estelle's obituaries, although laudatory, were biographically sparse, and of course added nothing to what is known about her father.

William Calvin, Jr., born in October, 1873, was also called Calvin or "Cal." He was Calvin and Nina's oldest son, and Captain Vance's oldest surviving son upon the death of half-brother, Allen, in 1885. Young Calvin was born, and spent his pre-teen years on Riverside Plantation in rural Bossier Parish. At about age thirteen, he moved across the river with his family to Shreveport. His photograph at about this time, in uniform and wearing a "TI" cap, identifies him as a student at Shreveport's Thatcher Institute, attended by the promising sons of the area's discerning families. Later he is pictured as a jaunty, popular, urbane young man in a snap-shot photo with some of his young contemporaries. Cal's aspirations and prospects in life are revealed in the Shreveport city directories. They show him to be employed by the cotton buying firms of Foster & Glassell and Crawford, Jenkins & Booth, from 1897 to 1900. By the year 1900, he had progressed from "clerk" to "cotton buyer" with the latter firm. However, with the untimely deaths of his father and brother, in late 1898, the Vance generational vocation of planter would inevitably fall to him. It would also fall to Calvin to be the sole progenitor of the Vance family line.

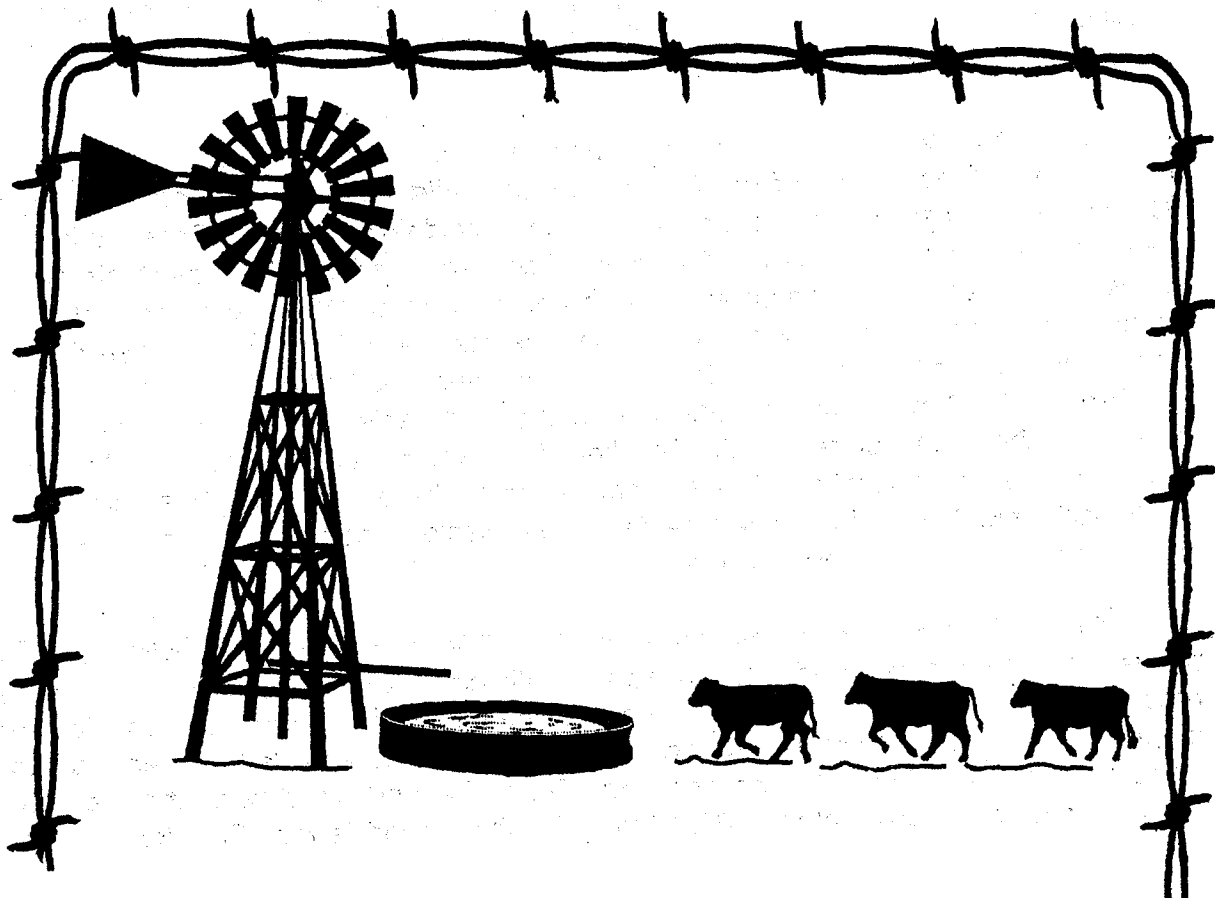
In February, 1902, Calvin was married to Mary Emily Arnold, daughter of John and Lou Brownlee Arnold of the Brownlee-Vanceville area. According to the Bossier Banner wedding article, no Vances attended the wedding, not even Cal's mother, Nina. Mary's father, as a young ex-Confederate officer, acquired 3,000 acres of his own after the war, but was foreclosed upon in the financial panic of 1873. Although John Arnold never enjoyed the prosperity of the Vances, he maintained his good name--that being more precious than material wealth. Had there been bad blood between the Vances and Arnolds? They'd had adjoining plantations in Bossier Parish, and may have had contact in Abbeville County, South Carolina, from which place the Vances, Arnolds and Brownlees had all migrated. This schism seems to have never fully healed, and may have had weight later in the Vance family intricacies not being communicated from Vance to Vance-Arnold descendants.

Cal and Mary took up residence on Riverside, on the same alluvial cotton land planted by his father and great uncle. William Calvin, Jr., was an energetic, progressive agriculturist, who would also become known as a prominent Bossier Parish planter. A daughter born December 28, 1902, did not survive long enough to be named. William Calvin, III, was born July 20, 1904, and his sister, who was named Larry Arnold, was born October 20, 1908. Family legend is that Cal liked to take an

occasional extended trip by train across the river to Shreveport to play poker. It was said that after these excursions, he would stop to pick up something nice for Mary at Flournoy & Harris Jewelers (probably Hutchinson Brothers Jewelers, whose employ Messrs. Flournoy and Harris would later leave to open their own store). The story is supported by three very nice diamond rings which are still in the family. Calvin seems to have had a happy, but all too short, life. While in his mid-thirties, he developed acute pleurisy, and in May, 1910, was admitted to North Louisiana Sanitarium (now Doctors' Hospital) in Shreveport. After a short stay, he was taken by Mary to a more favorable climate at Comfort, Texas, in the Texas hill country. Here he put on weight and was thought to be on his way to recovery. However, on June 3rd, while pushing their infant daughter in her stroller, he suddenly hemorrhaged and died. His last words were: "Mary, I'm dying." If he ever spoke of his father's family background, that conversation has not survived.

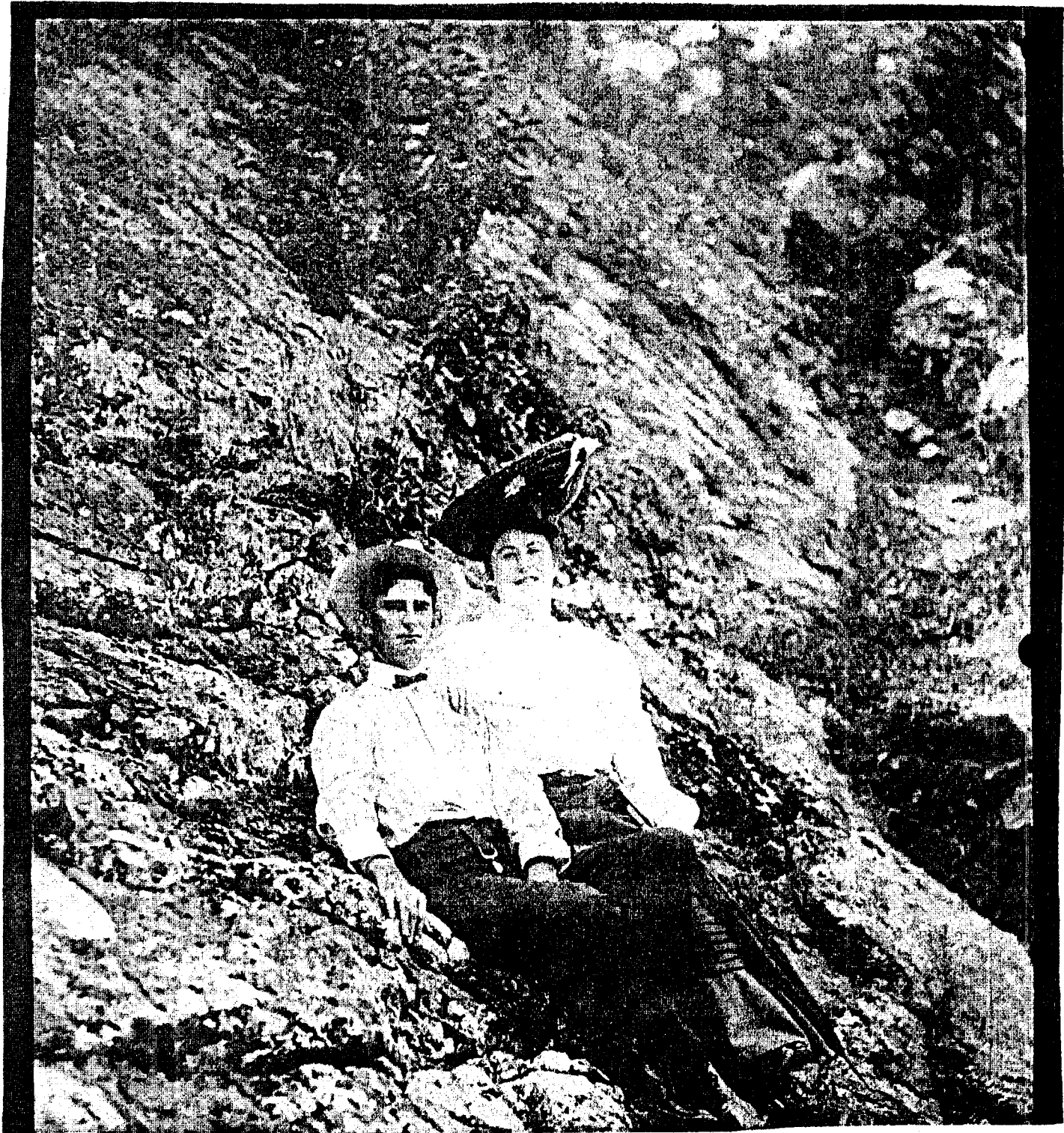
The third Calvin married, but died young without issue. Although Captain Vance's male line would end, his blood line did not. Larry Arnold Vance was able to pass down the Vance gene, if not the genealogy. If anyone knew the family history, it would have been his cousin, and wife. Some clue to Calvin's descendancy might yet be found in Nina's story.

* * * * *





WILLIAM CALVIN VANCE, & MARY EMILY ARNOLD
Hot Springs, Arkansas



WILLIAM CALVIN VANCE, JR., & MARY EMILY ARNOLD
Hot Springs, Arkansas

HENDERSON-BURTON AHNENTAFEL

(This chart was submitted by ALTGA member, Roy Henderson, Jr., 334 Yolanda, Shreveport, LA 71105-4338.)

1. HENDERSON, William Lee b 21 Aug 1992, Lithia Springs, Douglas Co., GA.
2. HENDERSON, Theodore Abbott b 30 May 1963, Melbourne, Brevard Co., FL, m 15 Aug 1987, Little Rock, Pulaski Co., AR to
3. BURTON, Polly Wynne b 31 Mar 1964, Little Rock, AR.
 - A. HENDERSON, Polly Elizabeth b 5 Dec 1989, Lithia Springs, GA.
 - 1 B. HENDERSON, William Lee (see above).
4. HENDERSON, Jr., Roy Lee b 31 Jan 1930, Hamilton, Butler Co., OH, m 4 Sep 1954, Hyde Park Presbyterian Church, Tampa, Hillsborough Co., FL to
5. REIMER, Dorothy Anne b 30 Apr 1930, Chicago, Cook Co., IL.
 - A. HENDERSON III, Roy Lee b 9 Dec 1955, Philadelphia, PA.
 - B. HENDERSON, George David b 10 Dec 1956, Philadelphia, PA m Tracy MOENS on 27 Nov 1985, Metairie, Jefferson Par, LA.
 - C. HENDERSON, Darrall Robert b 25 Mar 1959, Philadelphia, PA, m (1) BATT, Katherine, m (2) HOPKINS, Carol Sue on 17 Jun 1989, Russell, KY. A. HENDERSON, Lilly J.H. b 15 May 1997, China.
 - 2 D. HENDERSON, Theodore Abbott (see above). /Adopted.
6. BURTON, William Earl b 4 Dec 1940, Little Rock, AR, m 18 Dec 1960, Little Rock, AR to
7. LENDERMAN, Janis Kaye b 29 Sep 1940, DeQueen, Sevier Co., AR.
 - 3 A. BURTON, Polly Wynne (see above)
 - B. BURTON, Mary Kay b 19 Apr 1967 m MOREII, Jamie.
 - C. BURTON, Susan b 28 Jan 1970, m BRYANT, Danny.
8. HENDERSON, Sr., Roy Lee b 13 Jul 1907, Jinks, Estill Co., KY, d 4 Nov 1988, Pomona, Los Angeles Co., CA. Int Rosehill Cemetery, Hamilton, OH. m 1929, Newport, Campbell Co., KY to
9. COYLE, Susie Myrtle b 26 Feb 1908, Hamilton, Butler Co., OH, d 23 Nov 1990, Bridgeport, Fairfield Co., CT, Int Greenwood Cemetery, Hamilton, OH.
 - 4 A. HENDERSON, Jr, Roy Lee (see above)
 - B. HENDERSON, Theodore Randolph b 1 Apr 1931, Hamilton, OH, d 16 Nov 1997, Parker, AZ, m (1) HEWITT, Patricia in 1951, m (2) _____, Maureen I. ca 1962.
 - C. HENDERSON, Jean Elizabeth b 3 Oct 1934, Hamilton, OH m HERSHNER, Richard.

HENDERSON, Sr., Roy Lee m (2) SEBASTION, Katherine:

 - D. HENDERSON, Leroy b 1938, d ca 1985.
 - E. HENDERSON, Joan b 1940, d 15 Aug 1993, m (1) RUCK, Jim, m (2) SIMPSON.
 - F. HENDERSON, Bejure b 1951, Hamilton, OH, d May 1986.
 - G. HENDERSON, Alma b 30 Aug 1954, Hamilton, OH, m CHENEY.
 - H. HENDERSON, Frederick b 1958.
 - I. HENDERSON, Phillip W. b 1966, m Neila.
 - J. HENDERSON, Kimberly b 1968, m KELLY.
10. REIMER, Jurgen Hinrich b 24 Mar 1901, Kropp, Schleswig-Holstein, Germany, d 20 Jan 1972, Tampa, FL, m 1 Mar 1929, Chicago, IL to
11. AY, Dora b 22 Jan 1903, Berganhusen, Schleswig-Holstein, Germany, d 28 Dec 1982, Tampa, FL.
 - 5 A. REIMER, Dorothy Anne (see above)
12. BURTON, Earl Vesper m to
13. VENIS, Doris.

- 6 A. BURTON, William Earl (see above)
14. LENDERMAN, Richard Wynne m 25 Jun 1935 to
15. TOLER, Pauline Elizabeth b 3 Jul 1914, AR.
 A. LENDERMAN, Jr., Richard Wynne b 1936.
- 7 B. LENDERMAN, Janis Kay (see above)
 C. LENDERMAN, Pollyanna b 1948, d 1949.
16. HENDERSON, Orla William b 1881, Estill Co., KY, d Jun 1937, Hamilton, Butler Co., OH, Int Milleville Cemetery, Millville, OH, m 23 Aug 1906, C.M. LOGSDON's to
17. LOGSDON, Ida V. b 28 Apr 1887, Estill Co., KY, d 31 Oct 1971, Hamilton, OH.
 8 A. HENDERSON, Sr., Roy Lee (see Above). /Int Millville, OH
 B. HENDERSON, June D. b 17 Dec 1910, Estill Co., KY, d 12 Oct 1977, Hamilton, OH, m STURGIS, Ester.
 C. HENDERSON, Robert J. b Estill Co., KY, d ca 1990, Hamilton, OH, m FUGATE, Mildred ca 1934.
 D. HENDERSON, Woodrow C. b 7 Oct 1912, Estill Co., KY, d Oct Oct 1975, Hamilton, OH, m Dorothy.
 E. HENDERSON, I, Fredrick b 1914, Estill Co., KY, d 1978, Hamilton, OH, m (1) Mildred, m (2) Lucile.
 F. HENDERSON, Jr., Orla William b ca 1924, m MAJORS, Stella ca 1945.
18. COYLE, John Wilford b 2 Sep 1881, Alcorn, Jackson Co., KY, d 16 Oct 1967, Hamilton, OH, m 4 Sep 1902, Happy Top, Estill Co., KY to
19. LOGSDON, Elizabeth Tungate b 28 Apr 1884, Estill Co., KY, d 3 Mar 1937, Hamilton, OH, Int Green Cemetery.
 A. COYLE, Roy Allen b 17 Sep 1903, Alcorn, KY, d 11 Jan 1976, Miami, Dade Co., FL, Int Melbourne, FL m LOGSDON, Hazel Elma on 18 Oct 1923, Hamilton, OH.
- 9 B. COYLE Susan Myrtle (see above) 1st marriage to HULL, Thomas E.
 C. COYLE, Lyddia Helen b 21 Apr 1910, Hamilton, OH, d 27 Feb 1913, Hamilton, OH, Int Greenwood Cemetery.
20. REIMER, Detlif b 1860, Kropp, Schleswig-Holstein, Germany, d Kropp, Germany, m Kropp, Germany to
21. ENGELAND, Anna b ca 1860, Kropp, Germany, d ca 1938, Kropp, Germany.
 A. REIMER, Johann b ca 1894, Kropp, Ger., m Anna.
 B. REIMER, Hans Hinrich b 23 Mar 1898, Kropp, Ger., d 25 Jul 1977, Winter Haven, Polk Co., FL, m AY, Wiebka Margarete.
- 10 C. REIMER, Jurgen Hinrich (see Above)
 D. REIMER, Detlif b aft 1902, m Marie.
 E. REIMER, Claudius b aft 1902.
 F. REIMER, Max b aft 1903.
 G. REIMER, (male) b aft 1904.
22. AY, Johann b 6 Aug 1858, Berganhusen, Schleswig-Holstein, Germany, d Berganhusen, Ger., m Berganhusen to
23. HANSEN, Anna Christina b 9 Jun 1861, Ke..., Schleswig-Holstein, Ger., d 28 Aug 1924, Berganhusen, Ger.
 A. AY, Christina b 18 Feb 1883, Berganhusen, Ger, m THIESON, Johann.
 B. AY, Hans b 13 Mar 1884.
 C. AY, Katherina Tina b 15 May 1887, Berganhusen, Ger, m WIESENER, Jurgen.
 D. AY, Johann b 9 May 1889, Berganhusen, Ger.
 E. AY, Anna Marie b 16 Mar 1892, Berganhusen, Ger., m PEWINSKY, Franz in Hamburg, Germany.

28. LENDERMAN, Columbus Franklin b 28 Jul 1866, Greenville, Anderson Co., SC, d 6 Sep 1938, Wattensaw, Lonoke Co., AR, Int. Hebron Cemetery, m 2 Jul 1893 to
29. BURNS, Cora Lela b 18 Jan 1875, Lonoke Co., AR, d 9 May 1961, Lonoke Co., AR. Int. Hebron Cemetery.
- A. LENDERMAN, William Warren b 24 Jun 1894
- B. LENDERMAN, Sarah Elizabeth b 13 Feb 1896.
- C. LENDERMAN, Louis b 28 Oct 1888, d 1890.
- D. LENDERMAN, Earl Hobart b 8 Jan 1901.
- E. LENDERMAN, Ernest Judson b 16 Nov 1902.
- F. LENDERMAN, Theodore b 25 Nov 1905.
- G. LENDERMAN, Elmo Smith b 13 Jul 1908.
- 14 H. LENDERMAN, Richard Wynne b 12 Aug 1910, Lonoke Co., d 7 Oct 1971, Newport, AR, m TOLER, Pauline Elizabeth "Honey" on 25 Jun 1935. (see above)
30. TOLER, Preston m to
31. _____, Lillian.
32. HENDERSON, Othaniel Dudley b 16 Sep 1830, Station Camp, Estill Co., KY, d 25 Nov 1890, Station Camp, KY, m 19 Jun 1865, P.G. Cox's home to
33. COX, Christi Ann b 1847, Estill Co., KY, d 17 Mar 1931, Estill Co., KY.
- A. HENDERSON, Thomas b 7 Aug 1856.
- B. HENDERSON, Sally b 1858.
- C. HENDERSON, Chriss.
- D. HENDERSON, Mary W. d 28 May 1864.
(These children by Othaniel's 1st marriage to Susanna BARKER)
(Children by Christi COX)
- E. HENDERSON, Elbert d 2 Sep 1879, Estill Co., KY.
- F. HENDERSON, John b 1865, d 1947, Moberly, Madison Co., KY.
m (1) EMBS, Nannie on 22 Dec 1897, Estill Co., KY, m (2) _____,
Louana aft 1900. Mar in Orathe EMBS Home.
- G. HENDERSON, Jennie b 1868, d Greenfield, Macoupin Co., IL, m TUDOR.
- H. HENDERSON, Livie H. b 1871, m BARKER.
- I. HENDERSON, Jr., O. D. b 1873, d IN.
- J. HENDERSON, Joseph b 1876, d 23 Jun 1964, Station Camp, KY, m (1) ROSE, Pearl, m (2) 25 May 1899, BARKER, Addie in Estill Co., KY at W. G. BARKER's.
- K. HENDERSON, Lula b 17 Oct 1879, d 12 Oct 1884, Estill Co., KY.
- 16 L. HENDERSON, Orla William (see above).
- M. HENDERSON, Bejure b 1883, d Hamilton, OH, m LOGSDON, Alma.
- N. HENDERSON, Hebbert b 20 Jun 1889, Estill Co., KY, d 23 Feb 1957, Joe HENDERSON's home, Station Camp, KY.
34. LOGSDON, Col. Elias Wolford b 1863, Red Lick, Estill Co., KY, d aft 1940, Hamilton, OH, Int. Millville, OH, m 7 Sep 1885, Jackson Co., KY to
35. RICHARDSON, Margaret b 1867, Red Lik, Estill Co., KY, d Hamilton, OH, Int. Millville, OH.
- 17 A. LOGSDON, Ida V. b 28 Apr 1887, Estill Co., KY, d 31 Oct 1971, Hamilton, Butler Co., OH, Int. Milleville, OH m 23 Aug 1906 at C.M. LOGSDON's, Estill Co., KY to HENDERSON, Orla William HENDERSON (see 16 above).
- B. LOGSDON, Alma b 1889, d 12 Dec 1979, Boca Raton, Palm Beach Co., FL, Int. Irvine, Estill Co., KY, m HENDERSON, Bejure.
- C. LOGSDON, Julian Malpice b 1891, Locust Branch, Estill Co., KY, d Berea, Madison Co., KY, m 17 Nov 1921 to MALONE, Mary C.
- D. LOGSDON, Ethyl b aft 1891, d aft 1955, m OLIVER, Beck.

- E. LOGSDON, Thomas b aft 1892, d in Fairfield Twp, Butler Co., OH, m _____, Dorothy in Charleston, WV.
- F. LOGSDON, Deama b aft 1893, d aft 1955, m WINKLER, Rice.
- G. LOGSDON, Charles b aft 1894, m _____, Margaret.
- H. LOGSDON, Minerva b aft 1894, Jinks, Estill Co., KY, d aft 1970, Hamilton, OH, Int. Milleville Cemetery, m FRENCH, Flemon in 1912, Estill Co., KY.
- I. LOGSDON, Ann b aft 1895, d aft 1955, m FRAILEY, William.
- J. LOGSDON, Cale b aft 1896, d 2 May 1991, m _____, Mildred.
- K. LOGSDON, Oca b aft 1897, m (1) TODD, Earl, m (2) MARCUM.
- L. LOGSDON, Ralph b aft 1900.
- M. LOGSDON, Thelma b aft 1901, m HASTINGS, Howard.
36. COYLE, Ambrose LOGSDON b 2 Mar 1863, Red Lick, Estill Co., KY, d 8 Jan 1932, Hamilton, OH. Int. Red Lick, KY, m 19 Aug 1880 at E.D. RICHARDSON's, Estill Co., KY to
37. RICHARDSON, Mary Ann b 29 Feb 1860, Barbourville, Knox Co., KY, d 20 Jun 1951, Hamilton, OH. Int. Greenville Cemetery.
- 18 A. COYLE, John Wilford (see above).
- B. COYLE, James Marion b 14 Mar 1883, Jackson Co., KY, d 26 Dec 1978, Hamilton, OH, m 31 Dec 1903, Madison Co., KY (?) to LOGSDON, Bessie.
- C. COYLE, Robert Langford b 24 Oct 1884, Red Lick, Estill Co., d 25 May 1958, Hamilton, OH, m 1908 to LOGSDON, Marthanie.
- D. COYLE, Joseph Thomas b 18 Sep 1886, d 20 Nov 1945.
- E. COYLE, Nettie Mae b 2 Nov 1888, Jackson Co., KY, d 16 Jan 1986, Hamilton, OH, m McGEE, Merle.
- F. COYLE, Almedia b 22 Nov 1890, d 14 Feb 1950, m (1) ADAMS, Charles, m (2) ASHLEY, Jack, m (3) WOLFE, Pierce.
- G. COYLE, Margaret b 8 Dec 1892, Alcorn, Jackson Co., KY, d 8 May 1983, Middletown, Butler Co., OH, m STANDAFER, Boyd in Oct 1909, Covington, KY.
- H. COYLE, Caleb Martin b 2 Feb 1895, Alcorn, KY, d 14 Jan 1986, Hamilton, OH, m (2) RICHARDSON, Pauline Schormann, m (2) LOGSDON, Talitha Jane on 29 Mar 1913, Toledo, OH.
- I. COYLE, Mary Francis b 21 Feb 1897, Jackson Co., KY, d 21 Mar 1899, Estill Co., KY.
- J. COYLE, George Dewey b 13 Apr 1899, Jackson Co., KY, d 14 Jan 1959, m MAY, Ruth Allen in 1918, Hamilton, OH.
- K. COYLE, Harold Gay b 13 Oct 1901, Jackson Co., KY, d 12 Dec 1998 Hamilton, OH. Int. Greenwood Cemetery, m 23 Sep 1924, Hamilton, OH to McGEE, Gertrude.
- L. COYLE, Della Mack b 7 Mar 1905, Estill Co., KY, m 4 Nov 1920, Covington, KY to HOSKINS, Virgil.
38. LOGSDON, Adolphus D., b 10 Dec 1859, Madison Co., KY, d 16 Sep 1928, Hamilton, OH. Int. Greenwood Cemetery, m 10 Jul 1881, E. D. LOGSDON's to
39. TUNGATE, Lydia Jane b 26 Mar 1864, Estill Co., KY, d 8 May 1925, Fairfield Twp, Butler Co., OH.
- A. LOGSDON, Susan b 6 Oct 1881, d 11 Jul 1918, Hamilton, OH, m FARTHING, Coleman.
- 19 B. LOGSDON, Elizabeth Tungate (see above).
- C. LOGSDON, June Walker b 17 Mar 1886, d Aug 1887.
- D. LOGSDON, Anna B., b 26 Feb 1888, d 9 Jul 1965, Hamilton, OH, m KING, William P.

- E. LOGSDON, Marthanie b 15 Aug 1890, Happy Top (Alcorn), Estill Co., KY, d 25 Jan 1957, Hamilton, OH. Int. Greenwood Cemetery, m COYLE, Robert Langford in 1908
- F. LOGSDON, Talitha Jane b 19 Jul 1892, Estill Co., KY, d 24 Nov 1945, Cincinnati, Hamilton Co., OH, m COYLE, Caleb Martin on 29 Mar 1913, Toledo, OH.
40. REIMER, Johann b ca 1840.
- 20 A. REIMER, Detlif b 1860, Schleswig-Holstein, Germany, d in Kropp, Schleswig-Holstein, Ger., m ENGELAND, Ann in Kropp, Germany.
44. AY, Peter m to
45. VINAFRU, Christina Margaret.
- 22 A. AY, Johann (see above).
B. AY, Marie.
C. AY, (?) b in America.
D. AY, (?) b in America.
46. HANSEN, Hans b 18 Apr 1834, Berganhusen, Schleswig-Holstein, Germany, d 10 Jul 1908, Gerganhusen, Ger., m 28 Mar 1861, Berganhusen, Ger., to
47. AGGE, Katharina b 1 Jan 1835, Meggedorf, Germany, d 24 May 1911, Berganhusen, Germany.
- 23 A. HANSEN, Anna Christina (see above).
B. HANSEN, Christina b 2 Apr 1863, d 1 Jan 1907, m CLAWSON, Hewsing.
C. HANSEN, Margaretta b 26 Jul 1865, m CORDAS, Johann August Friedrich Leanhart.
D. HANSEN, Hans b 9 Oct 1867.
E. HANSEN, DATLEF B 31 Jan 1869, d 5 Feb 1894.
F. HANSEN, Katharina b 15 Feb 1872, d 1891, Hamburg, Germany.
G. HANSEN, Wilhelmina b 14 Sep 1876, d 16 Feb 1926, Hamburg, Ger, m JOHANNSEN, Jurgan Christian.
H. HANSEN, Sophia b 13 Aug 1878, m STINKA.
I. HANSEN, Jurgan b 22 Jun 1881, d 26 Dec 1947, Hamburg, Ger.
56. LENDERMAN, Richard Wynne b 20 Dec 1830, Greenville, Anderson Co., SC, d 14 Dec 1908, Carlisle, Lonoke Co., AR, m 19 Mar 1854, Greenville, SC to
57. SMITH, Mary Elizabeth b 9 Jun 1833, prob., Greenville, SC, d 19 Mar 1903 Lonoke Co., AR.
- A. LENDERMAN, Theodore R. b 3 Sep 1855, d 6 Oct 1855.
B. LENDERMAN, Julia A. b 2 Jan 1860.
C. LENDERMAN, Lattie A. b 16 Feb 1863
D. LENDERMAN, Lewis L. b 13 Jun 1864.
- 28 E. LENDERMAN, Columbus Franklin (see above).
F. LENDERMAN, John Jackson b 1868.
G. LENDERMAN, Sarah Elizabeth b 14 Feb 1871.
H. LENDERMAN, Joseph b 7 Aug 1874.
58. BURNS, William Warren m to
59. STONE, Margaret A.
- 29 A. BURNS, Cora Lela (see above)
64. HENDERSON, John b 1808, Madison Co., KY, d 13 Nov 1839, Estill Co., KY. m betw 20-22 Aug 1827, Madison Co., KY to m (1) BLANTON, Elizabeth, m (2)
65. THOMAS, Elinor "Nelly" b 1813
(child by Elizabeth BLANTON)
A. HENDERSON, Elizabeth.
(children by Elinor THOMAS)
- 32 B. HENDERSON, Othaniel Dudley (see above).
C. HENDERSON, Joshua T. b 1833.

- D. HENDERSON, Martha b 1835.
- E. HENDERSON, John b ca 1837.
- F. HENDERSON, Abram b 1839.
- G. HENDERSON, William D. b 1841.
- 66. COX, Perry Green b 1826, m 2 Sep 1841, Estill Co., KY to
- 67. WILSON, Magaret b 1824.
 - A. COX, Lewis b 1845.
- 33 B. COX, Christi Ann (see above).
- C. COX, Eli b 1849.
- D. COX, Silas b 1851.
- E. COX, William b 1853.
- F. COX, Lucinda b 1856.
- G. COX, Malvinia b 1859.
- H. COX, Perry G. b 2 Feb 1863, NC, d 6 Jun 1933, KY, m _____, Margaret.
- 68. LOGSDON, John B., m (1) to (m (2) _____), Nancy
- 69. TUCKER, Sally Ann b 1833 (1)
 - 34 A. LOGSDON, Col. Elias Wolford (see above).
 - B. LOGSDON, John
 - C. LOGSDON, William.
(child by Nancy)
 - D. LOGSDON, William H.
- 70. RICHARDSON, Evan D. b 1808, VA, m to
- 71. FRANCIS, Minerva b 1836.
 - A. RICHARDSON, Eliza b ca 1850, d 1937, Red Lick, Station Camp, Estill Co., KY, m Geofery ISAACS in 1870.
- 37 B. RICHARDSON, Mary Ann (see above).
- C. RICHARDSON, Minerva Francis b ca 1861, m 30 Nov 1879, Estill Co., Co., KY to WELLS, Silvester.
- 35 D. RICHARDSON, Margaret (see above)
- E. RICHARDSON, Beck b ca 1868.
- 72. COYLE, James Marion b 1840, Estill Co., KY, d 1920, Berea, KY. Int. Red Lick Cemetery, m 24 Mar 1859, Jackson Co., KY to
- 73. LOGSDON, Mary Francis b 8 Apr 1843, Estill Co., KY, d 1930, Berea, Madison Co., KY.
 - 36 A. COYLE, Ambrose LOGSDON (see above).
- 74. RICHARDSON, Evan D. b 1808, VA m to
- 75. FRANCIS, Minerva b 1836.
 - A. RICHARDSON, Eliza b ca 1850, d 1837, Red Lick, Station Camp, Estill Co., KY, m 1870 to ISAACS, Geofery.
- 37 B. RICHARDSON, Mary Ann (see above).
- C. RICHARDSON, Minerva Francis b ca 1861, m 30 Nov 1879, Estill Co., KY to WELLS, Silvester.
- 35 D. RICHARDSON, Margaret (see above).
- E. RICHARDSON, Beck b ca 1868.
- 76. LOGSDON, Bill m to
- 77. COYLE, Talitha.
 - 38 A. LOGSDON, Adolphus D. (see above).
- 78. TUNGATE, Josiah b 1840, Estill Co., KY, d 4 Feb 1864, Camp Nelson, KY. m 23 Aug 1860 at Elias LOGSDON's, Estill Co., KY to
- 79. LOGSDON, Martha Anne b 1843.
 - A. TUNGATE, II, Elias b 5 Jul 1861, MO
- 39 B. TUNGATE, Lydia Jane (see above).
- 112. LENDERMAN, John b 1802, Greenville, SC, d 1862, Greenville, SC, m to
- 113. _____, Christiann b 1808, Greenville, SC, d 1861, Greenville, SC.

- 56 LENDERMAN, Richard Wynne (see above).
 114. SMITH, W. W. (Probably).
 57 SMITH, Mary Elizabeth (see above).
 128. HENDERSON, Abraham b NC, d Bet 1810-1820, Madison Co., KY, m ca 1800 to
 129. BLANTON, Annie b NC
 64 HENDERSON, John (see above).
 130. THOMAS, Joshua m to
 131. THOMAS, Patsy Tudor.
 65 THOMAS, Elinor "Nelly" (see above).
 144. COYLE, Tilford b 1817, Estill Co., KY, d 1858, m 30 Apr 1833, Madison
 Co., KY to
 145. ALCORN, Elvina b 1817, KY.
 72 COYLE, James Marion (see above).
 146. LOGSDON, John B. b 1803, Madison Co., KY, d Jackson Co., KY, m to
 147. LOGSDON, Nancy Ann b 1807, d Jackson Co., KY.
 73 LOGSDON, Mary Francis (see above).
 152. LOGSDON, Bill m to
 153. MURPHY, Nancy.
 156. TUNGATE, Sr., JOSIAH m to
 157. RICHARDSON, Rhoda
 78 A. TUNGATE, Josiah (see above).
 158. LOGSDON, Elias m to
 159. BECKLEHYMER, Cecile.
 79 A. LOGSDON, Martha Anne (see above).
 224. LENDERMAN, Peter b 1760, Orange Co., SC (later called Chatham Co.), d
 1840, Greenville, SC m to
 225. _____, Barbary b 1769, d 1845, Greenville, SC.
 112 A. LENDERMAN, John (see above).
 288. COYLE, Jesse b 1781, Salisbury Dist, Roway Co., NC, d 12 Feb 1861, Rav-
 enna, Estill Co., KY, m 21 Sep 1815, Irvine, Estill Co., KY to
 289. POWELL, Jane b bet 1780-95, SC, d 1869, Ravenna, Estill Co., KY.
 144 A. COYLE, Tilford (see above).
 B. COYLE, Armelda m to LOGSTON, Edward.
 C. COYLE, Talitha Arimenthia m to WOODYARD, Louis.
 D. COYLE, Lucinda Ann b 1826, m 12 Dec 1844 to BAKER, Sheridan.
 E. COYLE, Elvina b 1828, m 30 May 1850 to BAKER, Silas.
 290. ALCORN, James m to
 291. QUICK, Anna.
 145 A. ALCORN, Elvina (see above).
 294. LOGSDON, William m to
 295. HYMER, Elizabeth (BEHYMER).
 147 A. LOGSDON, Nancy Ann (see above).
 312. TUNGATE, Elias.
 156 A. TUNGATE, Sr., Josiah. (see above).
 316. LOGSDON, Louis P. m to
 317. POWELL, Nancy.
 158 A. LOGSDON, Elias. (see above).
 448. LENDERMAN, Henry b ca 1724, Germany, prob., d 1800, Greenville, SC, m to
 449. _____, Margaret b ca 1729, d ca 1806, Greenville, SC.
 224 A. LENDERMAN, Peter (see above).
 576. COYLE, Jr., Patrick b bet-1753-58, Roway Co., NC, d ca 1805, Madison Co.,
 KY. m to
 577. FOXWORTHY, Nancy or Lydia b 1757, d 1838.
 288 A. COYLE, Jesse (see above).

896. LINTEMAN, Justus b 1691.
 A. LINDERMAN, Jacob b ca 1722.
 448 B. LINDERMAN, Henry (see above).
 1152. COYLE, Patrick b 1726, Ulster Prov., Ireland, d aft 1800 in NC, m
 ca 1752, Roway Co., NC to
 1153. MURRAY, Mary Elizabeth d aft 1800 in Madison Co., KY.
 576 A. COYLE, Jr., Patrick (see above).

* * * * *

HOW DID COLONEL WOLFORD LOGSDON GET HIS NAME?

(Roy Henderson, who is a trustee on ALTGA's Board, submitted this article. It is written by his cousin, Bob Hollingsworth, US Coast Guard (Ret), Reston, VA, whom he met on the internet.)

In 1996, at a reunion of our cousins who are grandchildren of Colonel Wolford Logsdon and Margaret Richardson, we pondered the question of why our great-grandfather was named Colonel. We realized that no one knew the answer. In order to find the answers to the question of how Colonel Wolford Logsdon was given his name, we first had to find the answers to two other questions. Who was the original Colonel Wolford? Why would our great-great-grandparents name one of their sons after him?

The answer to the first question can be found in History of Kentucky by Lewis Collins, published in 1882. This two-volume book is a comprehensive chronological history of Kentucky where Logsdons have lived since shortly after the Revolutionary War. The History of Kentucky contains many references to the activities of a Colonel Franklin S. Wolford during the Civil War. This Colonel Wolford clearly is the namesake for our ancestor, Colonel Wolford Logsdon.

Colonel Franklin S. Wolford commanded the First Kentucky Cavalry Regiment in the Union Army at the outbreak of hostilities in the fall of 1861, when status of Kentucky as a member of the Union, or as a neutral state, was still in doubt. Colonel Wolford and his troops were in thick of most of the battles that took place in Kentucky. In addition to his military skills, Colonel Frank Wolford was an outspoken Union Democrat, who would later become personally involved in the complicated politics of Kentucky during the Civil War. He was a popular figure who was widely known by the citizens of Kentucky and respected for his skills as a military commander, and as a politician, who spoke out against perceived heavy handed treatment of the citizens of Kentucky by military authorities.

The name of Colonel Frank Wolford appears for the first time in the Collin's History of Kentucky in the account of an encounter between Union and Confederate troops in the fall of 1861, almost two years before the birth of our ancestor, Colonel Wolford Logsdon.

On October 21, 1861, near Camp Wildcat, KY, at the crossing of three roads that lead to Mount Vernon, To London, and to Richmond, 7000 Confederate troops under Brigadier General Zolencoffer, attacked the 7th Kentucky Infantry Regiment. Among the Federal reinforcements that rushed to the scene was the 1st Kentucky Cavalry under the command of Colonel Franklin S. Wolford. The large Confederate force was repulsed after a desperate fight, and Colonel Wolford was on his way to becoming a military hero of the Civil War, who knew how to carry the fight. He was always in the thick of battles against the many Confederate raids into Kentucky. He was part of the Union force that pursued and captured Confederate Cavalry troops under Brigadier General Morgan, after his bold and historic raid through Kentucky and Ohio.

To understand the whole story of why Colonel Frank Wolford was important enough in the eyes of our great-great grandparents to name their son for him, it is important to understand what was happening in Kentucky and in the Logsdon family during the Civil War.

John B. Logsdon, the father of Colonel Wolford Logsdon was born in 1803, and he owned land that he farmed in Estill county in from about 1835. The 1850 Federal Census shows John at age 47, married to Nancy Logsdon, age 43.

Living in their household at the time of the census were seven sons: Edward, the oldest, was 21 years old, William, 18, Rufus, 16, Ambrose, 9, Francis, 7, James, 5, and a daughter, Elizabeth, who was 11 years old. Four of John's sons went on to serve in the Union Army. According to military records, William served in the 2nd Kentucky Cavalry. Rufus and Ambrose were in the 8th Kentucky Infantry, and Edward was in the 32nd Kentucky Infantry.

John Logsdon was nearly 60 years old when he married for the second time and became the father of our Colonel Wolford Logsdon in July of 1863. At the time of C.W.'s birth, Confederate General Scott's troops were operating in the area around Estill County, where the Logsdons lived. On July 30, a sharp skirmish took place at Irvine, only a few miles from the Logsdon's farm near Station Camp-Red Lick Creek between Scott's cavalry and the 10th Kentucky Cavalry.

The following day, General Burnside, the military Governor of Kentucky declared martial law throughout the state and suspended the rights of "disloyal citizens to vote". Collins in the History of Kentucky reports that nearly 40,000 citizens were kept from the polls by military intimidation to the disadvantage of the Union Democrats who lost the election for Governor, Lt. Governor and the Congress. In May of 1864, Colonel Franklin S. Wolford made a public speech after which he was accused by the military Governor of Kentucky of using insulting language towards the President. He was arrested and relieved of his command, but was subsequently restored to command at the direction of President Lincoln.

Colonel Frank Wolford, after he had been arrested again and awaiting trial for charges of disloyalty, uttered a public challenge to his adversaries, "The man dies who stands between me and the polls!". In the end, Colonel Wolford was never prosecuted, and he continued to serve in spite of the efforts of his political enemies. After the war ended, Colonel Frank Wolford was appointed as Adjutant General of Kentucky, and he served as an elector from Kentucky in several national presidential elections.

We probably will never know all of "the rest of the story" that caused our ancestors, John B., and Sallie A. Logsdon, to name their son after Colonel Wolford. We can, however, appreciate the passion and the spirit of our ancestors who lived through the difficulties of a civil war, disease, and hard work that paved the way for an easier life for us and future generations.

* * * * *

1898 BOSSIER PARISH VOTERS ROLLS

DATE OF REGISTRY	NAME	AGE	COLOR	NATIVI- TY	VOTERS RES. PRES. WARD	OCCUPATION
Jun 27	HUGHES, W. C.	30	W	LA	Alden's Bridge 3-2	Mcht
27	HICKMAN, W. B.	38	W	LA	Haughton 6-2	Farmer
27	HAYS, A. J.	28	W	AR	Haughton 6-2	Farmer
28	HUGHES, Capt. W.J.	61	W	SC	Rocky Mount 5-1	Farmer
28	HUGHES, Jno F.	29	W	LA	Rocky Mount 5-1	Farmer
29	HOLLINGSWORTH, T.A.	30	W	AR	Rocky Mount 5-1	Farmer
Jul 5	HODGES, W. H.	47	W	LA	Knox Point 1-1	Farmer
8	HOLMES, T. W.	40	W	LA	Curtis 1-2	Farmer
8	HARRISON, C. A.	25	W	LA	Plain Dealing 3-1	Farmer
9	HOLLEMAN, Marshall	22	W	MS	Knox Point 1-1	Clerk
9	HOLT, P. B.	36	W	LA	Knox Point 1-1	Farmer
11	HOUSETON, J. W.	48	W	MS	Haughton 6-2	Farmer
11	HODGES, C. B.	44	W	LA	Haughton 6-2	Farmer
11	HOUSETON, Dr.E.L.	49	W	MS	Haughton 6-2	M.D.
11	HODGES, L. K.	51	W	LA	Haughton 6-2	Farmer
12	HILLIER, E.	50	W	IL	Haughton 6-2	Mechanic
12	HOLLINGSWORTH, J.M.	24	W	LA	Haughton 6-2	Farmer
12	HOUSTON, D. M.	40	W	GA	Haughton 6-2	Farmer
12	HORTON, D. A.	32	W	SC	Haughton 6-2	Farmer
12	HUSBROOK, P. C.	66	W	IL	Haughton 6-2	Farmer
12	HODGES, J. G.	36	W	LA	Mott 4-2	Mcht
13	HOOD, W. O.	25	W	TX	Haughton 6-2	Milling
14	HICKMAN, Thos.	26	W	LA	Haughton 6-2	Farmer
15	HARRIS, C. M.	24	W	LA	Bellevue 6-1	M (?)
16	HALL, Dr. E. J.	64	W	SC	Benton 2-1	M.D.
16	HADLEY, D. H.	24	W	LA	Midway 5-2	Farmer
16	HOLLY, M. H.	25	W	LA	Midway 5-2	Farmer
18	HUGHES, J. A.	26	W	LA	Rocky Mount 4-1	Farmer
18	HENRY, J. W.	62	W	AL	Rocky Mount 4-1	Farmer
20	HOLLOWAY, J. E.	48	W	LA	Mott 4-2	Farmer
20	HOLLOWAY, M. C.	20	W	LA	Mott 4-2	Farmer
20	HOLLOWAY, R. F.	26	W	LA	Mott 4-2	Farmer
21	HOLMAN, J. C.	32	W	SC	Mott 4-2	Farmer
23	HEIFNER, John	63	W	TN	Carterville 4-1	Farmer
23	HEIFNER, C. A.	35	W	LA	Carterville 4-1	Farmer
23	HEIFNER, A. W.	21	W	LA	Carterville 4-1	Farmer
25	HEATH, T. W.	37	W	LA	Rocky Mount 5-1	Farmer
27	HAYDEN	57	W	IN	Plain Dealing 3-1	Farmer
27	HUDSON, J. F.	49	W	TX	Carterville 4-1	Farmer
27	HAMITER, R. E., Sr	55	W	GA	Plain Dealing 3-1	Farmer
29	HAMITER, R. E., Jr	22	W	LA	Plain Dealing 3-1	Farmer
29	HOBBS, J. R.	30	W	TN	Alden's Bridge 3-2	Clerk
29	HOBBS, P. G.	39	W	TN	Alden's Bridge 3-2	Clerk
Aug 4	HENSLEY, Rev. P. H.	48	W	TX	Benton 2-1	Minister
5	HILL, R. B.	26	W	LA	Benton 2-1	Mayor, Deputy Clerk
6	HERRON, R. J. T.	38	W	LA	Benton 2-1	Deputy Sheriff
6	HUDSON, A. D.	42	W	TX	Carterville 4-1	Farmer
16	HUEY, W. A.	39	W	GA	Knox Point 1-1	Mcht
16	HAYNES, F. B.	38	W	LA	Midway 5-2	Farmer
27	HARRIS, A. J.	36	W	MS	Bellevue 6-1	Farmer
27	HARRIS, T. T.	34	W	MS	Bellevue 6-1	Farmer
31	HOLLAND, J. B.	49	W	FL	Rocky Mount 5-1	Farmer

TIME OF STATE	RESIDENCE PARISH WARD	YEAR BORN	DO YOU REGISTER AS A VOTER AS OF 1 JAN 1867	NAME OF FATHER OR GRANDFATHER	WHERE RESIDED
30	30 8	1868	Son	W. J. HUGHES-F	LA
38	38 38	1860	"	W. J. HICKMAN-F	LA
27	27 4	1870	"	Jno HAYS-F	LA
38	38 38	1837	"	W. J. HUGHES-F	AL
29	29 29	1869	"	W. J. HUGHES-F	LA
20	20 7	1868	"	W. L. HOLLINGSWORTH-F	LA
47	47 20	1851	"	J. L. HODGES-F	LA
40	14 13	1858	"	Jno HOLMES-F	LA
25	25 25	1873	"	A. H. HARRISON-F	LA
2	2 2	1876	"	H. HOLLEMAN-F	OK
36	36 8	1862	"	Geo. HOLT-F	LA
35	35 30	1850	"	Jessie HOUSTON-F	MS
44	44 3	1854	"	J. L. HODGES-F	LA
47	25 25	1849	"	Jas. HOUSTON-F	LA
51	51 1	1847	"	Jno. L. HODGES-F	LA
17	16 16	1848	"	O. HILLIER-F	MO
24	7 6	1873	"	J. J. HOLLINGSWORTH-F	LA
33	14 14	1857	"	I. T. HOUSTON-F	LA
12	8 8	1866	"	T. W. HORTON-F	SC
20	20 16	1832	"	Jos. HUSBROOK-F	IL
36	13 13	1862	"	E. W. HODGES-F	LA
6	6 6	1872	"	S. J. HOOD-F	TX
26	26 26	1872	"	W. J. HICKMAN-F	LA
24	1 1	1874	"	A. HARRIS-F	LA
33	33 2	1834	"	W. E. HALL	SC
24	1 6 mo.	1874	"	D. M. HADLEY-F	LA
4	4 4	1873	"	Nathan HOLLY-F	LA
26	26 26	1872	"	W. J. HUGHES-F	LA
2	2 6 mo.	1836	"	Joseph HENRY-F	AL
48	48 48	1850	"	R. T. HOLLOWAY-F	LA
23	23 23	1875	Grandson	A. T. HOLLOWAY-GF	LA
26	26 26	1872	"	A. T. HOLLOWAY-GF	LA
30	20 20	1866	Son	H. H. HOLMAN-F	LA
40	40 40	1824	"	P. HEIFNER-F	AL
35	35 35	1862	"	John HEIFNER-F	LA
21	21 21	1876	"	John HEIFNER-F	LA
37	37 37	1861	"	Thos. HEATH-F	LA
10	10 10	1841	"		
26	26 26	1847	"	D. J. HUDSON-F	LA
50	50 50	1843	"	John HAMITER-F	LA
22	22 22	1876	"	R. E. HAMITER, Sr-F	LA
2	2 2	1868	"	W. W. HOBBS-F	TN
3	3 3	1858	"	W. W. HOBBS-F	TN
8	7 1	1850	"	A. T. HENSLEY-F	TX
26	26 5	1872	Grandson	W. A. HILL-GF	LA
38	38 13	1860	Son	Jas. A. HERRON-F	LA
26	26 26	1852	"	D. J. HUDSON-F	TX
10	10 8	1858	"	Jno T. HUEY-F	GA
38	38 38	1860	"	Jno A. HAYNES-F	LA
24	24 24	1862	"	HARRIS-F	LA
24	24 24	1864	"	HARRIS-F	LA
40	27 27	1849	"	J. B. HOLLAND-F	Eng

DATE OF REGISTRY	NAME	AGE	COLOR	NATIVI- TY	VOTERS RES. PRES. WARD	OCCUPATION
Aug 31	HUGHES, J. M. C.	58	W	AL	Alden's Bridge 5-2	Farmer
Jun 28	IVEY, W. E.	44	W	LA	Benton 2-1	Farmer
Aug 4	IRION, Dr. C. H.	37	W	LA	Benton 2-1	M.D.
Jun 27	JOHNSTON, W. J.	41	W	SC	Mott 4-2	Farmer
Jul 6	JOHNSON, W. B.	50	W	GA	Rocky Mount 5-1	Farmer
8	JENKINS, W. I.	33	W	LA	Curtis 1-2	Farmer
9	JONES, F. M.	35	W	LA	Knox Point 1-1	Farmer
11	JONES, Geo. W.	45	W	LA	Knox Point 1-1	Farmer
16	JONES, Jno G.	25	W	LA	Midway 5-2	Farmer
16	JONES, James L.	27	W	LA	Midway 5-2	Farmer
16	JONES, Wm. M.	29	W	LA	Midway 5-2	Farmer
19	JONES, G. W.	58	W	GA	Plain Dealing 3-1	Mcht
20	JOHNSTON, S. P.	36	W	LA	Mott 4-2	Farmer
21	JOHNSON, J. C.	40	W	LA	Carterville 4-1	Farmer
21	JOHNSTON, J. B.	32	W	LA	Carterville 4-1	Farmer
26	JONES, G. E.	22	W	GA	Plain Dealing 3-1	Clerk
Aug 16	JETER, J. W.	47	W	LA	Benton 2-1	Farmer
Jun 13	KELLY, P. A.	47	W	LA	Benton 2-1	Desk Clerk
29	KEITH, J. L.	30	W	LA	Rocky Mount 4-1	Mcht
Jul 14	KEITH, J. P.	43	W	MS	Plain Dealing 3-1	Mcht
18	KIRKLAND, Aaron	48	W	AL	Rocky Mount 4-1	Farmer
18	KIRK, J. I. B.	83	W	MD	Rocky Mount 5-1	Postmaster
20	KILGORE, J. V.	53	W	AL	Mott 4-2	Farmer
20	KILGORE, J. T.	30	W	LA	Mott 4-2	Farmer
20	KILGORE, I. J.	23	W	LA	Mott 4-2	Farmer
20	KING, L. A.	21	W	AR	Carterville 4-1	Farmer
20	KING, W. M.	44	W	MS	Carterville 4-1	Farmer
Jul 22	KIRTLEY, E. F.	51	W	LA	Plain Dealing 3-1	Farmer
Aug 27	KELLY, L. D.	40	W	LA	Benton 2-1	Postmaster
29	KEITH, W. T. Jr.	34	W	LA	Rocky Mount 5-1	Farmer
29	KENNER, Jas. L.	43	W	AL	Haughton 6-2	Farmer
Jun 13	LOGAN, Edward	27	W	LA	Benton 2-1	Drummer
28	LOGAN, J. C.	31	W	AR	Benton 2-1	Farmer
29	LOWE, W. A.	34	W	LA	Rocky Mount 5-1	Farmer
30	LOCKY, E. B.	36	W	AL	Midway 5-2	Farmer
Jul 5	LOVE, T. M.	63	W	AL	Alden's Bridge 3-2	Milling
9	LEE, L. W.	29	W	AL	Knox Point 1-1	Milling
9	LUSK, D. R.	29	W	LA	Plain Dealing 3-1	Farmer
13	LOVE, M. A.	30	W	AL	Plain Dealing 3-1	Teacher
14	LUSK, T. J.	24	W	LA	Plain Dealing 3-1	Farmer
14	LOVE, J. F.	47	W	LA	Haughton 6-2	Farmer
14	LOY, J. B.	49	W	LA	Benton 2-1	Farmer
14	LOY, J. P.	40	W	LA	Haughton 6-2	Mcht
14	LOY, J. J.	30	W	LA	Haughton 6-2	Mcht
14	LAWRENCE, Dr. P.	59	W	MS	Haughton 6-2	M.D.
14	LONG, C. D.	21	W	LA	Haughton 6-2	Clerk
14	LOY, J. F.	45	W	LA	Haughton 6-2	Mcht
16	LOY, A. C.	36	W	LA	Midway 3-2	Farmer
16	LOY, W. W.	52	W	LA	Midway 3-2	Farmer

TIME OF STATE	RESIDENCE PARISH WARD	YEAR BORN	DO YOU REGISTER AS A VOTER AS OF 1 JAN 1867	NAME OF FATHER OR GRANDFATHER	WHERE RESIDED
17	17 2	1840	Son	W. J. HUGHES-F	AL
44	44 10	1854	"	C. D. IVEY-F	LA
37	14 2	1861	"	A. B. IRION-F	LA
29	29 29	1857	"	D. H. JOHNSTON-F	LA
36	20 20	1848	"	J. W. JOHNSON-F	GA
33	10 10	1865	"	Milton JENKINS-F	LA
35	6 1	1863	"	H. T. JONES-F	LA
45	16 16	1857	"	J.C.P. JONES-F	LA
25	25 25	1873	"	W. J. JONES-F	LA
27	27 27	1871	"	W. J. JONES-F	LA
29	29 29	1869	"	W. J. JONES-F	LA
15	13 6	1840	"	Rauelle JONES-F	LA
36	36 36	1862	"	D. H. JOHNSTON-F	LA
22	13 13	1857	"	Wm JOHNSON-F	LA
30	30 30	1865	"	D. H. JOHNSON-F	LA
25	13 6	1876	"	G. W. JONES-F	LA
47	18 18	1850	"	J. T. JETER-F	LA
47	47 7	1851	"	Wm. A. KELLY-F	LA
30	30 30	1868	"	W. C. KEITH-F	LA
37	33 33	1854	"	R. F. KEITH-F	LA
27	27 27	1850	"	Snowden KIRKLAND-F	LA
58	26 17	1815	"	James KIRK-F	LA
33	33 20	1845	"	J. N. KILGORE-F	AL
30	30 30	1867	"	J. V. KILGORE-F	LA
23	23 23	1875	"	J. B. KILGORE-F	LA
2	2 2	1877	Grandson	J. W. KING-GF	AR
2	2 2	1854	Son	J. W. KING-F	AR
35	22 9	1847	"	E. N. KIRTLEY-F	LA
40	40 7	1858	"	Wm A. KELLY-F	LA
34	34 34	1864	"	J. W. KEITH-F	LA
37	30 12	1855	"	W. W. KENNER-F	LA
21	8 8	1870	"	J. E. LOGAN-F	AR
24	9 9	1867	"	J. E. LOGAN-F	AR
34	5 5	1864	"	Wm LOWE-F	LA
30	30 30	1861	"	G. W. LOCKY-F	LA
42	30 6	1835	"	Fielding LOVE-F	AL
29	29 29	1868	"	T. J. LUSK-F	LA
6	6 1	1868	"	H. T. LOVE-F	AL
24	24 24	1873	"	T. J. LUSK-F	LA
9	9 9	1851	"	R. B. LOVE-F	TX
49	49 15	1848	"	T. J. LOY-F	LA
40	40 9	1858	"	T. J. LOY-F	LA
30	30 9	1868	"	T. J. LOY-F	LA
27	27 27	1871	"	Dr. P. LAWRENCE-F	LA
50	50 50	1839	"	D. LAWRENCE-F	LA
21	21 21	1876	"	J. D. LONG-F	LA
45	45 18	1853	"	Isaac LOY-F	LA
36	36 36	1862	"	T. J. LOY-F	LA
52	52 52	1846	"	T. J. LOY-F	LA

DATE OF REGISTRY	NAME	AGE	COLOR	NATIVI- TY	VOTERS RES. PRES. WARD	OCCUPATION
Jul 16	LOY, W. V.	30	W	LA	Midway 5-2	Farmer
16	LUSK, W. I.	26	W	MS	Midway 5-2	Farmer
16	LYLES, Capt. Thos.	61	W	SC	Midway 5-2	Farmer
16	LEWIS, Jno M.	38	W	LA	Midway 5-2	Farmer
18	LOWE, W. R.	63	W	TN	Rocky Mount 5-1	Farmer
18	LOCKY, H. E.	28	W	LA	Rocky Mount 5-1	Farmer
20	LYNN, J. B.	46	W	LA	Mott 4-2	Farmer
20	LYNN, B. F.	23	W	LA	Mott 4-2	Farmer
21	LOVE, T. J.	33	W	AR	Alden's Bridge 3-2	Milling
21	LOVE, H. L.	26	W	LA	Alden's Bridge 3-2	Milling
22	LOWE, J. A.	38	W	LA	Mott 4-2	Farmer
26	LINCOLN, A. S.	52	W	NY	Plain Dealing 3-1	Contractor
26	LOVE, J. O.	26	W	AL	Plain Dealing 3-1	Transfer
27	LYNN, A. D.	21	W	LA	Carterville 3-1	Farmer
28	LEWIS, J. E.	29	W	VA	Plain Dealing 3-1	Farmer
29	LEATHERMAN, I. H.	39	W	LA	Alden's Bridge 3-2	Lawyer
29	LESTER, J. J.	28	W	LA	Carterville 4-1	Farmer
Aug 11	LEIGHTNER, W. H.	22	W	WV	Knox Point 1-1	Farmer
12	LOYD, W. R.	30	W	LA	Alden's Bridge 3-2	Farmer
16	LEE, R. E.	44	W	LA	Benton 2-1	Mechanic
29	LARKIN, T. P.	59	W	LA	Rocky Mount 5-1	Farmer
Jun 9	MACKKEY, George	60	W	Ireland	Benton 2-1	Farmer
10	MONTGOMERY, H. H.	51	W	MS	Plain Dealing 3-1	Tax Assessor
28	MOSS, A. J.	42	W	AR	Knox Point 1-1	Farmer
28	MARTIN, C. E.	23	W	LA	Rocky Mount 4-1	Clerk
28	MARTIN, I. H.	57	W	SC	Rocky Mount 4-1	Minister
29	MASON, J. E.	38	W	LA	Mott 4-2	Farmer
30	MILLER, R. M.	52	W	AL	Midway 5-2	Farmer
Jul 5	MALONE, G. F.	28	W	LA	Rocky Mount 4-1	Farmer
7	MAURY, J. T.	47	W	GA	Midway 5-2	Farmer
7	MERRETT, L. F.	43	W	LA	Midway 5-2	Farmer
11	MEARES, W. C.	27	W	LA	Plain Dealing 3-1	Farmer
12	MARSALIS, T. P.	38	W	AL	Haughton 6-2	Mcht
12	MIDDLETON, H. P.	37	W	MS	Haughton 6-2	Farmer
12	MAJORS, Geo. S.	54	W	MO	Haughton 6-2	Farmer
12	MAJORS, E. R.	22	W	MO	Haughton 6-2	Farmer
12	MARTIN, W. F.	32	W	AL	Haughton 6-2	Clerk
13	MOBLEY, J. W.	30	W	MO	Haughton 6-2	M. D.
13	MULKEY, N. E.	42	W	GA	Haughton 6-2	Clerk
13	MITCHELL, J. A.	44	W	LA	Plain Dealing 3-1	Mcht
14	MODOWELL, J. H.	42	W	MS	Haughton 6-2	Farmer
15	MOORE, E. R.	75	W	GA	Haughton 6-2	Farmer
15	MOORE, J. M.	49	W	MS	Bellevue 6-1	Constable
15	MORROW, W. M.	50	W	LA	Bellevue 6-1	Farmer
16	MERRETT, M. R.	47	W	GA	Midway 5-2	Farmer
18	MARTIN, E. W.	21	W	LA	Rocky Mount 5-1	Farmer
18	MARTIN, A. A.	27	W	LA	Rocky Mount 5-1	Farmer
18	MARTIN, E. E.	26	W	LA	Rocky Mount 5-1	Teacher
18	MARTIN, R. B.	49	W	GA	Rocky Mount 5-1	Farmer
18	MARTIN, Rev. Robt	83	W	SC	Rocky Mount 5-1	Minister

TIME OF STATE	RESIDENCE PARISH WARD	YEAR BORN	DO YOU REGISTER AS A VOTER AS OF 1 JAN 1867	NAME OF FATHER OR GRANDFATHER	WHERE RESIDED
30	30 30			Son	T. J. LOY-F LA
3	3 7 mo	1872		"	J. LUSK-F MS
37	37 37	1837		"	Thos. M. LYLES-F SC
38	13 13	!*(ç)		"	Wm LEWIS-F LA
46	5 5	1833		"	Jessee LOWE-F TN
28	28 28	1870		"	G. W. LOCKY-F LA
46	46 46	1852		"	P. F. LYNN-F LA
23	23 23	1875	Grandson	P. F. LYNN-GF	LA
25	25 15	1865	Son	T. M. LOVE-F	LA
25	25 15	1872	"	T. M. LOVE-F	LA
38	5 5	1860	"	W. R. LOWE-F	LA
3	3 3	1846	"	W. LINCOLN-F	NY
7	7 3	1871	"	H. F. LOVE-F	AL
21	21 21	1877	Grandson	P. F. LYNN-GF	LA
3	2 2	1869	Son	W. C. LEWIS-F	NC
39	2 2	1859	"	Thos LEATHERMAN-F	LA
28	28 28	1870	Grandson	T. LESTER-GF	LA
3	3 3	1876	Son	J. M. LEIGHTNER-F	WV
30	20 6	1867	"	Joseph LOYD-F	LA
44	29 4	1854	"	Jas. LEE-F	LA
59	59 59	1839	"	W. W. LARKIN-F	TX
40	40 3	1838	(1866 in "Shreveport)	John MACKEY-F	Ireland
29	29 6	1847	"	Johnathan MONTGOMERY-F	TX
26	26 25	1856	"	J.C.C. MOSS-F	TX
23	23 15	1875	Grandson	Rev. Robert MARTIN-GF	LA
47	47 1	1841	Son	J. W. MARTIN-F	LA
38	38 4	1860	"	W. P. MASON-F	LA
11	9 5	1840	"	Meredith MILLER-F	AL
28	2 2	1870	"	J. A. MALONE-F	LA
21	21 20	1851	"	Richard MAURY-F	GA
43	15 15	1854	"	Miles MERRETT-F	GA
27	27 27	1871	"	J. J. MEARES-F	LA
7	3 3	1859	"	C. C. MARSALIS-F	AL
10	10 8	1861	"	R. M. MIDDLETON-F	MS
4	4 4	1844	"	R. R. MAJORS-F	MO
4	4 4	1876	"	G. S. MAJORS-F	LA
2	1 1	1866	"	W. F. MARTIN-F	AL
28	28 28	1868	"	W. J. MOBLEY-F	LA
6	6 6	1855	"	Dr. M. J. MULKEY-F	GA
24	24 24	1854	"	S. MITCHELL-F	AR
17	1 1	1857	"	E. MODOWELL-F	TX
38	38 38	1823	"	John MOORE-F	GA
12	12 12	1849	"	Wm MOORE-F	MS
50	13 13	1848	"	J. M. MORROW-F	TX
46	28 22	1851	"	M. M. MERRETT-F	LA
21	21 21	1876	Grandson	Robt MARTIN-GF	LA
27	27 27	1871	"	Robt MARTIN-GF	LA
26	26 26	1872	"	Robt MARTIN-GF	LA
43	43 43	1848	Son	Robt MARTIN-F	LA
39	39 39	1814	"	Jas. MARTIN-F	GA

DATE OF REGISTRY	NAME	AGE	COLOR	NATIVI- TY	VOTERS RES. PRES. WARD	OCCUPATION
Jul 19	MORRESON, D. M.	55	W	NC	Rocky Mount 5-1	Farmer
20	MATLOCK, S. M.	25	W	LA	Carterville 4-1	Farmer
21	MORGAN, B. F.	44	W	AL	Carterville 4-1	Farmer
21	MORGAN, J. L.	25	W	LA	Carterville 4-1	Farmer
21	MORGAN, J. D.	69	W	GA	Carterville 4-1	Farmer
21	MARTIN, J. A.	63	W	AL	Carterville 4-1	Farmer
21	MAYS, G. T.	28	W	LA	Carterville 4-1	Farmer
21	MAY, Alex	22	W	LA	Carterville 4-1	Farmer
21	MOY, G. W.	32	W	LA	Carterville 4-1	Farmer
23	MASON, W. P.	60	W	TN	Mott 4-2	Farmer
26	MILLER, M. M.	29	W	LA	Plain Dealing 3-1	Mechanic
26	MILLER, Austin	24	W	LA	Plain Dealing 3-1	Mechanic
26	MITCHELL, J. P.	23	W	LA	Plain Dealing 3-1	Clerk
27	MARTIN, J. B.	41	W	LA	Plain Dealing 3-1	Farmer
27	MALONE, I. M.	40	W	LA	Carterville 4-1	Farmer
29	MAIKELL, Wm	39	W	LA	Alden's Bridge 3-2	Farmer
Aug 5	MURFF, A. J.	39	W	MS	Benton 2-1	Desk of Atty at (?)
6	MARTIN, W. J.	29	W	LA	Benton 2-1	Machinist
6	MADING, E. R.	26	W	LA	Plain Dealing 3-1	Clerk
17	MONTGOMERY, J. M.	34	W	AL	Benton 2-1	Mcht
18	MURFF, A. B.	47	W	MS	Haughton 6-2	Farmer
24	MATLOCK, H. M.	55	W	MS	Mott 4-2	Farmer
Jun 27	McDADE, E. J.	54	W	AL	Haughton 6-2	Farmer
27	McDADE, Robt. E.	35	W	LA	Haughton 6-2	Farmer
27	McDADE, J. T.	31	W	LA	Knox Point 1-1	Planter
Jul 5	McCLELLAND, D. M.	23	W	LA	Rocky Mount 5-1	Farmer
5	McCLELLAND, W. F.	54	W	LA	Mott 4-2	Farmer
5	McCOLL, J. M.	47	W	NC	Rocky Mount 5-1	Farmer
7	McDADE, W. E.	28	W	LA	Haughton 6-2	Farmer
7	McCORMACK, W. B.	28	W	LA	Benton 2-1	Farmer
9	McCLANAHAN, J. M.	54	W	MS	Knox Point 1-1	Milling
9	McCLANAHAN, Martin	21	W	LA	Knox Point 1-1	Milling
9	McCLANAHAN, A. W.	25	W	LA	Knox Point 1-1	Milling
12	McDADE, N. F.	60	W	AL	Haughton 6-2	Farmer
12	McDADE, W. T.	40	W	LA	Haughton 6-2	Liveryman
12	McDADE, Loye	23	W	LA	Haughton 6-2	Farmer
12	McDADE, J. G.	33	W	TX	Haughton 6-2	Farmer
12	McDADE, Ross E.	21	W	LA	Haughton 6-2	Farmer
12	McKINNEY, C. W.	52	W	GA	Haughton 6-2	Farmer
12	McCAA, C. D.	46	W	LA	Haughton 6-2	Clerk
12	McKINNEY, J. S.	48	W	GA	Haughton 6-2	Farmer
13	McCLANAHAN, C. H.	25	W	LA	Plain Dealing 3-1	Picture Agent
20	McKELLAR, J. D.	29	W	AR	Mott 4-2	Farmer
14	McMOTH, J. H.	30	W	AR	Haughton 6-2	Clerk
22	McDONALD, J. W.	50	W	LA	Carterville 4-1	Farmer
23	McCRAMI, F. K.	51	W	MS	Plain Dealing 3-1	Farmer
29	McKENZIE, T. D.	41	W	LA	Mott 4-2	Farmer
Aug 12	McANN, R. L.	41	W	LA	Haughton 6-2	Machinist
25	McCALEB, Wm. H.	52	W	LA	Benton 2-1	Machinist
27	McCLANAHAN, D. C.	23	W	LA	Knox Point 1-1	Milling

TIME OF STATE	RESIDENCE PARISH WARD	YEAR BORN	DO YOU REGISTER AS VOTER AS OF 1 JAN 1867	OR	NAME OF FATHER GRANDFATHER	WHERE RESIDED
31	31 31	1843		Son	Cyrus MORRESON-F	NC
25	25 25	1873		"	John MATLOCK-F	LA
30	30 30	1854		"	J. D. MORGAN-F	LA
25	25 25	1873		"	J. D. MORGAN-F	LA
30	30 30	1829		"		
47	47 45	1833		"	Jas. MARTIN-F	AL
28	28 28	1870		"	M. J. MAYS-F	LA
22	22 22	1876		"	Jas. MAY-F	LA
32	32 32	1866		"	Jas. MAY-F	LA
46	46 46	1838		"		
28	5 2	1868		"	E. MILLER-F	LA
24	5 2	1874		"	E. MILLER-F	LA
10	10 10	1875		"	S. MITCHELL-F	AR
38	35 10	1858		"	T. B. MARTIN-F	LA
40	23 23	1858		"	J. W. MALONE-F	LA
39	5 2	"		"	J. MAIKELL-F	LA
17	14 6	1859		"	S. D. MURFF-F	MS
29	18 mo 18 mo	1869		"	W. A. MARTIN-F	LA
26	26 10	1871		"	J. B. MADING-F	LA
33	23 4	1863		"	H. MONTGOMERY-F	LA
27	20 17	1851		"	S. C. MURFF-F	MS
49	49 49	1843		"	C. M. MATLOCK-F	LA
49	49 49	1844		"	A. J. McDADE-F	LA
35	35 35	1863		"	A. J. McDADE-F	LA
31	31 5	1867		"	J. G. McDADE-F	LA
23	23 23	1875		"	W. F. McCLELLAND-F	LA
40	40 15	1844		"	W. F. McCLELLAND-F	LA
28	28 28	1851		"	Horace McCOLL-F	NC
28	28 28	1870		"	J. G. McDADE-F	LA
28	28 28	1870		"	Dr. H. McCORMICK-F	LA
44	44 8	1844		"	A. McCLANAHAN-F	LA
21	21 8	1876		"	J. M. McCLANAHAN-F	LA
25	25 2	1873		"	J. M. McCLANAHAN-F	LA
52	52 52	1831		"	W. W. McDADE-F	AL
40	40 40	1857		"	N. F. McDADE-F	LA
25	25 25	1873		"	N. F. McDADE-F	LA
33	33 33	1863		"	J. G. McDADE-F	LA
21	21 21	1877		"	J. G. McDADE-F	LA
49	49 49	1846		"	Jas. McKINNEY-F	LA
46	46 12	1851		"	J. G. McCAA-F	LA
47	42 42	1849		"	Jas. McKINNEY-F	LA
6	6 6	1868		"	W. N. McKELLAR-F	AR
25	25 1	1868		"	J. G. McMOTH-F	AR
33	33 33	1848		"	Jack McDONALD-F	LA
7	7 7	1847		"	Jno. McCRAMIE-F	MS
41	4 4	1857		"	J. M. McKENZIE-F	LA
41	1 1	1857		"	D. J. McANN-F	LA
5	5 5	1846		"	Wm McCALEB-F	LA
23	23 12	1875		"	J. M. McCLANAHAN-F	LA

(To be Continued)

DR. ELISHA JONES HALL

(Our Past President, Carroll H. Goyne, Jr., brought the following article to our attention. It was published originally in The Bulletin, Chester District Genealogical Society, P. O. Box 336, Richburg, SC 29729.)

Dr. Elisha Jones Hall, son of Dr. William Ellison Hall and Dorcas Jones Hall, was born March 23, 1834 in Fairfield County. He was born and reared in the Gladden Grove Community of the county. His father, a graduate physician of 1828 from the Charleston Medical College, was a very prosperous planter on an extensive scale. He was the third largest planter in 1860 in Fairfield County; his holdings were more than 10,000 acres. He also owned several thousand acres in Chester County, 2,500 acres in Echols County, GA., and 4,600 acres in Marion County, Fla. This land encompasses Silver Springs, Fla., today. He also owned 1,475 acres in Bossier Parish, La. on the Red River. He was a slaveholder with holdings of about 346 slaves.

Reportedly, he was very kind and fair in his treatment of them and would not split up a slave family. He gave medical assistance to all who needed his attention no matter whether they could pay or not.

Elisha J. Hall, like his father, was a physician and planter. He graduated in 1856 with a B.A. degree from the University of Georgia. He graduated with honors and was fifth in his class. He was a member of the Demosthenian Literary Society while in the University. He was a captain in the Confederate Army during the war. He was captured in Natchez, Miss., and taken as prisoner of war; he was held for one year. He was in the First Louisiana Cavalry, and was exchanged as a prisoner of war on the Savannah River, opposite Oakley Island, GA. on November 3, 1864. After the war he returned to his plantation in Bossier Parish, La. and was a planter on a large scale. After eight years as a planter after the war, he turned his attention to medicine and went to the University of Louisville in Kentucky. He graduated with an M.D. degree in 1875. He married Sallie Ellison, daughter of William H. Ellison and Elizabeth Adger Ellison, in 1859. After she died, he married her sister, Janie Adger Ellison in 1870. There were several children by both wives.

He built a very large plantation home in Caddo Parish, La., which is still there today. This is in the town of Belcher, LA. Dr. Elisha J. Hall died December 28, 1904.

* * * * *



MOTHER'S LOVE

(This sweet family story was submitted by ALTGA member, Thelma Sabbath.)

I had a sweet, loving mother, who taught her nine children how to love and respect other people. Also, she taught us how to love one another. She took time with us, and she also would make sure that we went to Sunday School and Church every Sunday morning because she went with us. We lived in the country near Grand Cane (De Soto Parish), and we had no cars to ride in, so we walked several miles to the church, and we were on time.

Another thing, we had to sit quite in church, no talking. Mamma would sit with us. All of us would sit together. If she would happen to see one of us talking, Mamma did not say a word, but would give us a stern look and just shake a finger. We knew what that meant.

We would wash our Sunday clothes early on Saturday so that they would dry and then could be ironed on Saturday night. We had a rule in our house, No Ironing on Sundays and no cooking. Mamma would cook Sunday dinner on Saturday nights. There would always be company coming home with us every Sunday for dinner. There was plenty of love in those days.

Every night before we went to bed, all of us had to kneel down at the bed. Mamma would teach us to say the Lord's Prayer before we got into the bed.

There is nothing on this earth
More precious than silver or gold
More beautiful than diamonds or roses
For all the world to behold.

Than the love of a Christian mother
Who faithfully followed God,
Who taught her children
As down Life's way they trod.

Her door was always open
To her weary, wandering child
And no matter how you treated her
She loved you all the while.

That is a mother.

FATHER

My father was a good person, but growing up we children, the sisters and brothers, thought that he was the meanest person in the world. When our father told us to do something, we'd better do it or else. I can remember as a child growing up we all had a job to do and we knew that we better do what we were supposed to do. We knew our father and knew him well.

All of the people in the community thought a lot of our father. His name was Robert, but everybody called him Rob for short.

Rob would see that we would go to church and Sunday School every Sunday. He would go along with us to make sure that we got there. He was a good father. He did what he could do for us and gave us what he was able to give.

I can remember when my sister, Ethel, was ten, I was eight, and we wanted a coat so bad. So our dad went somewhere and got us a coat. My coat was gray suede, and my sister Ethel's was a green suede. The year he got those coats it was in August, and it was hot, hot, hot. But we wanted those coats and we were so happy. They were the first coats we remember having. Ethel and I in August got dressed with those suede coats on and went to church and we

nearly burned up. There wasn't any electricity; we just used paper fans or a piece of pasteboard. But we kept those coats on, and we sweated almost to death.

I can remember our first pair of shoes. We were living in the country and our father came up here to Shreveport, somewhere, and when he came back home he brought a great big croker sack full of shoes.

When he got home with all those shoes, we were so glad. We got into that sack and found that every single shoe was for the same foot. My five-year-old brother, Theron, was so glad to get the shoes he put one on each foot. His feet swelled and he had to sleep all night with those shoes on his feet.

I can remember we had an old mule named Pet. Our father had Pet trained to do what he told her to do, just like us kids. What a father he was!

* * * * *

Anna Bell Harris Miner

SHREVEPORT, LA - Anna Bell Harris Miner passed away on February 4, 1999. Visitation will be held at Osborn Funeral Home, Southern Avenue, from 6 p.m. until 8 p.m. on Friday, February 5, 1999. Graveside service will begin at 10 a.m. on Saturday, February 6 at Forest Park Cemetery, St. Vincent Avenue. Officiating will be Dr. R. Pat Day, Senior Pastor of First United Methodist Church.

Mrs. Miner was a native and lifelong resident of Shreveport. She graduated from C. E. Byrd High School and attended Centenary College. For over fifty years she was a member of First United Methodist Church and was a member of the Lucille Sexton Sunday School class. She was a member of Chapter F, P.E.O., Pelican Chapter, NSDAR, Shreveport Chapter Magna Carta Dames, The Colonial Dames of America and Shreveport Chapter, UDC. She had been honored by numerous national and state organizations for her service.

Mrs. Miner was preceded in death by her husband, James Sterling Miner, Jr.; her parents, Jesse Byrd Harris, Jr. and Pauline Schwartzburg; brother, Jesse Byrd Harris, III. She is survived by her son, James Sterling Miner, III and wife, Helen Rae Zaenglein of Houston, Texas; grandchildren, Deborah Rae Miner Allen and husband, Larry C. of Lubbock, TX, David Sterling Miner of Winston-Salem, North Carolina; great-grandchildren, Jessica Haleigh Allen and Landry Christian Allen of Lubbock, Texas; sisters, Pauline Harris Sturgis and husband, W. Harold of Texarkana, Texas, Jessica Harris Goodwin and Robert L. of Shreveport; sister-in-law Elizabeth S. Harris McBride and husband, John T. and numerous nieces and nephews.



Honorary pallbearers are nephews, Richard G. Harris, Jesse B. Harris, IV, Randolph W. Harris, John T. McBride, Jr. and Michael E. Douglas.

Memorials may be made to First United Methodist Church, Shreve Memorial Headquarters' Genealogy Floor or charity of donor's choice.

Osborn Funeral Home
865-8426

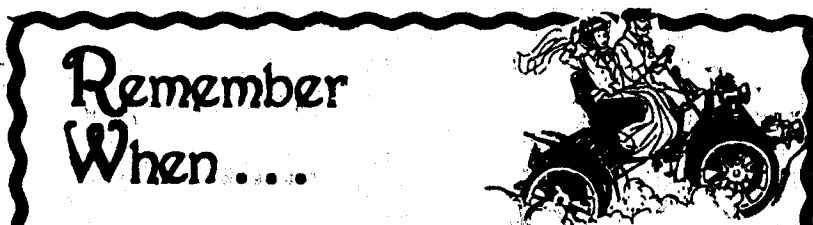
MEMBERSHIP LIST 2ND QUARTER 1999

ALLSTOTT, Doris-5687 Jefferson-Paige Rd., Shreveport, LA 71119-5401.
 WILLIFORD, WEBB, COSTON, WILEY
 ANDERSON, Helene-91 Tulip Ave., CA Al Apt, Floral Park, NY 11001-1901.
 EDWARDS, JORDAN
 ANDERSON, Jack-P O Box 596, Webers Falls, OK 74470-0596.
 ALLEN, WALLACE, HOSKINS, RUSSELL
 ATKINS, Clarence E.-7327 Arrow Wood Rd., Ozawkie, KS 66070-4000.
 ADKINS
 *BAKER, Melba W.-P O Box 544, Camp Zion Rd., Haughton, LA 71037-0544.
 WALKER, RUSHING, HARRIS
 BARLOW, Jr., R. Allan-545 Oneonta, Shreveport, LA 71106-1619. www.prysmbarlow.
 KARCHER, ANSLEY, CANNON, ORTON
 BAUGH, Ella Jean-257 Burt Lane, West Monroe, LA 71291-7486.
 DYKE, HARRIS, QUEEN, BURNS
 BEAM, Vila W.-1310 Foothill Dr., Kalispell, MT 59901-8250.
 WORSHAM, WILLIAMSON, EVANS, COOK
 BEAUBOUF, Peggy-2656 Hwy 1232, Winnfield, LA 71483-9415.
 RIFFE, DODSON, CHANDLER, SULLIVAN
 BEREL, Patricia-P O Box 979, Zwolle, LA 71486.
 LEWING, EASON, DUPREE, OXLEY
 BIENVILLE PARISH LIBRARY-2768 Maple St., Arcadia, LA 71001-3699.
 BOWERS, Kathryn-5117 Sealands Lane, Fort Worth, TX 76116-8415.
 MOORE, PLEASANT
 BRADFORD, Mildred H.-1959 Bayou, Shreveport, LA 71105-3405.
 GRAVES, McMILLAN, FIELDER, HOLMES
 BROUSSARD, Betty-137 Farquar Lane, Lake Charles, LA 70601.
 GILBERT, BEAVER, YOUNGBLOOD, VESSELLS
 BURKE, Mari-221 Woodside Lane, Montgomery, TX 77356-8270.
 MCKEE, GREEN, GORMAN
 BURNLEY, Barbara A.-2625 Lyles Lane, Shreveport, LA 71118-2623.
 CULVER, WRIGHT, COLEMAN, JENKINS
 CENTENARY COLLEGE OF LOUISIANA LIBRARY-P O Box 41188, Shreveport, LA 71134-1188.
 COATES, Geneva L.-10701 S Broadway, Oklahoma City, OK 73170-6411.
 LUMLEY, ROBINSON, GIBBONS, ALYEA
 CODAY, Jr., Mrs. F. C. (Linda)-2402 Waverly Dr., Bossier City, LA 71111-2417.
 FORE, WILSON, DICKSON, FOX
 COLLINS, Marilyn M.-10 Bryanston Ct., San Antonio, TX 78218.
 GOLDSMITH, GOODWIN, LANGFORD, O'NEAL
 CONNELL, Randall W.-810 Voyager, Houston, TX 77062-5619.
 GORDON, STEPHENS, DIXON
 CRIDER, Leota Lee-9110 Linwood Ave., 72B, Shreveport, LA 71106.
 BEAVER, LANE, PITTMAN, MOFFETT
 *DANIEL, M/M Jimmy Ray (Juanita)-124 E. 80th St., Shreveport, LA 71106.
 JOHNSON, WILLIS, HENRY
 DAR LIBRARY, MEMORIAL CONTINENTAL HALL-1776 D St NW, Washington, DC 20006-5392.
 DAVIS, Jean-17765 Gardner Rd., Dallas, OR 97338-9433.
 BENJAMIN, CARR, BLACKSHIRE
 DAVIS, Wanda Bowlin-102 Cynthia Dr., Kerrville, TX 78028-4805.
 GOFF, CARTER, WALKER, FERGUSON
 DICKSON, Col. & Mrs. Thomas-2201 Normand Ave., Bossier City, LA 71112-4357.
 McILWREATH, HARRIS, POWELL
 DIETRICH, Jane C.-3 Oakley Lane, The Bluffs, LA 70748.
 CLEMENTS, JOHNSTON, ENDSLEY, PERKINS

DILL, Marjorie-315 Lynwood Dr., Houma, LA 70360-0572.
 HENRY, BROOK, FOURNET, AMI/AME/AMY
 DUNLOP, Martha P.-604 Huron St., Shreveport, LA 71106-1652.
 PEYTON, PRICE, JORDAN, HUGHES
 EDWARDS, Robert Allan-521 W. Cross St., Benton, AR 72015.
 McFERRAN/McFERRIN/McFERRIN, VAN VECKHOVEN, WOODDEL/WOODLE, SANDEFER/SANDI-
 FARRINGTON, Arthur A.-5640 Beechwood Dr., Lawton, OK 73505-2902 /FER/SANDEFUR
 KIMBALL, McLAUGHLIN, McMAIN
 GARSEE, Billie B.-9073 Billiu Ridge Dr., Shreveport, LA 71118-2611.
 LARGARS, SANSOM, BLACKMON, ERWIN
 GOVERN, Daisy Eleanor-10042 Artesia Dr., Shreveport, LA 71115-3405.
 YOUNG, JOHNSON, REIDHEIMER
 GREGORY, Kay K.-#3 Hillside Ct., Austin, TX 78746-6436.
 CAIN, HYDE, KERBO/KERBOW
 HATCHER, Sarah-3867 Elmer Ln., Shreveport, LA 71109-2040.
 BAKER, HARRIS, SCHELEMI, CRAMER
 HOOKER, Sandra H.-Rt 6, Box 138-A, Marshall, TX 75672-9205.
 HAWTHORNE, WINBURY, ESTES, ADDY
 HOWELL, David B.-111 Parlange St., Thibodaux, LA 70301-6434.
 JOHNSON, Evelyn E.-5506 Golden Meadows, Bossier City, LA 71112-4940
 ELSTON, MOORE, CARR, HARRELL
 JONES, Mrs. Royal S.-503 Thurman Rd., Crossett, AR 71635
 CALLOWAY, McBROOM, REEVES, FUTCH
 KENNEDY, Ronald C.-7627 Fernbrook, Houston, TX 77070-3720.
 WILSON, CRUMP, GIBSON
 LANDRY, Nancy Davis-626-15th Ave., NE, St. Petersburg, FL 33704-4709.
 MOORING, CROOM, BRYAN, KELLY
 MATHEWS, Reed Carlton-625 McCormick, Shreveport, LA 71104-4905. [www.softdisk.com/
compreed.](http://www.softdisk.com/compreed)
 MATHIS, ROGERS, KIRTLEY
 McCANN, Penny-215 Virginia Ave., Minden, LA 71055-2046.
 EDWARDS, FIELD, THOMA, SEXTON
 McDONALD, Margaret-4111 Farhills Dr., Austin, TX 78731-2811.
 SHROCK, PRICE, CARMICHAEL, SADLER
 McGATHEY, Suzanne Dampier-7640 So. Delaware St., Indianapolis, IN 46227-2419.
 GELISPI/GILISPIE, McCARTY, WOODS
 McKELVEY, Greta-4500 Kinvarra Cir., Mableton, GA 30126-1480 [Hmack@pipeline.com.](mailto:Hmack@pipeline.com)
 LEWIS, NORRIS, SIMS, WEAVER
 McNEILL, Jeanine-2145 Old Piedmont Rd., San Jose, CA 95132-1339.
 BOTZONG, HAMMETT, CRAIG
 MURPHY, M/M Miles (Montez)-1521 Ramberlyn Way, Shreveport, LA 71105-5418.
 RAINS, ARMSTRONG, KENNEDY, BOX
 NEAL, Carole E.-3501-35th Ave #4, Oakland, CA 94619-1343.
 SEALS, WARREN, WARD
 MOORE, Ms Ruth-818 Vernal Ln., Shreveport, LA 71118-4126.
 WRIGHT, DAWSON, GRUBBS, JACKS
 OLIPHANT, M/M James A. (Patsy)-1508 Bellaire, Bossier City, LA. 71112-3643.
 BRIGGS, PADGETT, HADEN, DAVIS, FORREST, MURPHEY, HILLIARD
 *OLIVER, Chris-4111 Pines Rd. #34, Shreveport, LA 71119-7321.
 WILLIAMS, DEVORICE, BELLE, PORTER
 OWENS, Raymon L.-846 E. River Rd., Shreveport, LA 71105-2811.
 CHANDLER, FIELDS, WILKES, MORGAN
 PEDDY, Sr., Glendel W.-Rt. 1, Box 30B, Sullivan, IL 61951-9801.
 GARLAND, FERRIER, BRAY
 PERKINS, Cheryl L.-190 Lakeshore Dr., Leesville, LA 71446-6137.
 SMEAT, HALL, GROVES, NASH

PETRY, M/M Curtis N.-130 Chelsea Dr., Shreveport, LA 71105-4206.
 POINDEXTER, LaGRANDE/LEGRAND, RATLEY
 PIERCE, Bibbit-7226 Beaufort Way, Shreveport, LA 71129-3413.
 BODDIE, MIXON, RICHMOND
 PHILLIPS, Betty Venable-2825 4th St. NW, Birmingham, AL 35215-1612.
 RHODES, Barbara Ann-13923 Sunset Dr., Whittier, CA 90602-2556.
 AUSTIN, DEARMAN, WELDON
 RINAUDO, Nancy K.-722 Acklen St., Shreveport, LA 71104-3902.
 HALVERSON, BERRY, GREENE, HARRIS
 GENEALOGICAL SOCIETY OF RIVERSIDE- P O Box 2557, Riverside, CA 92516-2557.
 R. W. NORTON ART FOUNDATION-4747 Creswell Ave., Shreveport, LA 71106-1889.
 SANDERS, Doris-1035 W. 109th St., Chicago, IL 60643.
 SANTA CLARA CO., HIS & GEN SOCIETY-2635 Homestead Rd., Santa Clara, CA 95051-
 SHAVER, Annette Duty-Box 368, Stamps, AR. 71860-0368. 5387.
 GILLMAN, DOOLEY, DeFEE
 SNEED, M/M William Jasper (Corene)-1056 Boulevard St., Shreveport, LA 71104-
 JONES, POST, COLE, CLEMENTS, HORNSBY, McLAURIN, GRAHAM, MORRISON /2060.
 STATE HISTORICAL SOCIETY OF WISCONSIN-816 State St., Madison, WI 53706-1488.
 ST. JOHN THE BAPTIST PAR., LIBRARY-1334 W Airline Hwy, LaPlace, LA 70068-3705.
 THORNHILL, William-P O Box 155, Harvey, LA 70059-0155.
 TRULL, Ester-2276 Strong Hwy., El Dorado, AR 71730-0304.
 VINES, SMITH, BARNES
 WARD, Walter Howard-103 Crestwood Dr., Tullahoma, TN 37388-1123.
 WILLIS, GRAY, NICKLAS
 WHITEHEAD, Alice-1527 Dora Ann, Shreveport, LA 71105-5414.
 BOREL, BARLOW, McDONALD, TAYLOR
 WORLEY, Penny-2725 Bowie Tr., Temple, TX 76502-3820.
 EDWARDS, McCARTY, HART
 HITCHCOCK, Geraldine-4015 Richmond, Shreveport, LA 71106-1031.
 HALE, HAWKINS, STANBERRY
 LDS LIBRARY ACQUISITIONS-35 NW Temple St., Salt Lake City, UT 84150-0691.
 NEW:
 MOORE, Marjorie B.-9328 Kildare Park Rd., Shreveport, LA 71118-3543.
 BARNES, WALLACE, BANDY, BUTLER
 TOMBLESON, Jr., Eldridge-2736 W. Cavette Dr., Shreveport, LA 71104-3715.
 TOMLINSON, ELDRIDGE, NIAGAR
 RENEW;
 DODSON, Carolyn-14582 Hwy 84, Logansport, LA 71049-2220.
 YATES, WINTERS, MOORE, MALCOLM
 (Star denotes African-American heritage)

* * * * *



A MONUMENTAL PROJECT

(This article was extracted from "The Shepherd's Fold", a small publication by the Live Oak Retirement Community, 600 E. Flournoy-Lucas Rd., Shreveport, LA 71115.)



Armed with household bleach and tenacity, Hunter Graham cleaned more than 270 monuments.

A visit to Cottage Grove Cemetery near Benton, LA reveals a picturesque wooded setting with a red brick church set atop a gentle hill. White headstones gleam in the morning sun. Yet, just a few short months ago, the scene was not so idyllic. That's when Live Oak resident Hunter Graham (Ben to his Army friends) went into action.

Graham's parents, J. Frank Graham and Mamie Crook Graham, plus several other relatives, are buried in the Presbyterian churchyard cemetery, which dates from 1840s. Among area pioneers interred there is James Belton Pickett (d. 1842), one of the original founders of the Shreve Town Co., which established the city of Shreveport,

"I went up there last spring to do some research on my family and found that you couldn't read most of the headstones," said Graham. Mildew, moss and fungus had blackened and obscured the ornate designs and lettering on the marble and granite monuments.

So Graham decided to do some cleaning up. Armed with a gallon spray canister of bleach, a brush and a putty knife, he went to work on the gravestone of Captain B. B. Matlock of the Confederate Army, one of his forbears. "After I finished, I had a little bleach left over, so I began another stone. It looked so good that I thought I'd tackle all of them in the neighborhood." The original idea soon escalated into a five-month project during which he cleaned more than 270 monuments.

The reason for his dedication is simple Graham said. "I had plenty of time on my hands. Some people play golf or fish. This is less expensive and I can see what I've done. It's a real satisfaction to be doing something to help others. Now, you can read all of the inscriptions."

Needless to say, the Cottage Grove Cemetery Committee was thrilled. "When they realized it was a family member doing this, they thought it was great." said committee member, Earl W. Strayhan. "They just couldn't believe it. It's beautiful out there now. I don't think anyone here would have been able to do the work he's done. Once he got started, he just couldn't stop-he had to get them all done!"

But Graham wasn't content to stop there, either. "He took the project that extra step further," said Strayhan, and reinventoried the whole cemetery." Although an excellent inventory had been made of the monuments in September of 1995, many inscriptions could not be read at that time. In consultation with Strayhan, Graham researched and prepared a 17-page document detailing pertinent information for every gravestone. Copies have been given to the Cottage Grove Cemetery Committee, Shreve Memorial Library, Mormon Genealogical Library, Louisiana Archives in Baton Rouge, and the local chapter of Friends of Genealogy.

Yet, the story continues. On August 27, Graham went before the Shreveport City Council to educate the body about weeds, fallen trees, and broken or displaced headstones at the Greenwood Cemetery on Stoner Avenue. I had cleaned another 25 to 30 family headstones there and saw the situation with the grounds," said Graham. "I know from experience that one person can make a difference, so I just decided to speak up." The cemetery is city property, so maintenance falls under the Parks and Recreation department. Mayor Bo Williams took the photos that Graham provided, acted quickly, and by the first week of September, work crews had transformed the appearance of Greenwood Cemetery.

When you look at Graham's life, these latest endeavors are really no surprise. Born here and raised in this area, he calls Shreveport home. After retiring from successful careers in the U.S. Army and sheriff's department, he pursued the college degree he had not completed in his youth. In 1976, at age 62, Graham became the oldest graduating senior for that year and received a B.A. in General studies from LSU-Baton Rouge.

So, where does Live Oak figure into this active volunteer's life, given the often-prevailing opinion that retirement communities offer a sedentary existence? Graham thinks his choice makes perfect sense: "I like the location. It's quiet, pollution-free, away from the hubbub of city traffic and set back from the road. I've got a nice yard and patio that I enjoy, and I like to walk around the property. I was ready for a little peace and quiet." Live Oak has become his home base, a haven of security and comfort after a busy day-where friends and social activities abound and assistance is close at hand. "Ben" Hunter Graham has shown us that 80-something years need not stand in the way if our hearts have monumental hopes and dreams to share.

At Live Oak, there are as many stories of this nature as you have time to listen. We invite you to join us soon for an inspiring visit and tour.

* * * * *



BOOK REVIEWS

By Herman Weiland

TITLE: COMBINED INDEX TO FAYETTE COUNTY, ALABAMA HISTORICAL SOCIETY'S

1. SESQUICENTENNIAL BROADCASTER (1969)
2. 150 YESTERYEARS (1971)
3. LOOKING BACK (1974)

ORDER FROM: Edith Hankins, 4200 Long Creek Road, Memphis, TN 38125.

COST: Contact Ms Hankins for price of Index Book Only.

These three books were produced without indexes. This is an index of the three books combined into one book. You will need to check each of the three index listings. No information was provided on where you might obtain copies of the three original books for purchase or review. Good Luck if you find your names..... 1999. 1. 231 pgs. 2. 186 pgs. 3 44 pgs size 8 x 11, soft cover.

* * * * *

TITLE: FAMILIES OF THE UNKNOWN BURTON AND SQUIRE BURTON (SENIOR) by Norma Knight Blanton.

ORDER FROM: Norma Blanton, 8 Grafton Court, Hot Springs, AR 71901.

COST: Contact Ms Blanton for price info.

This book is primarily about the family and descendants of Squire Burton, Sr., (c 1790-6 Aug 1873) and his wife, Rebecca Rhea (c 1803-11 Mar 1868.) Some information is given on the two assumed brothers of the Squire, John Burton (c 1791-____) and Sterling Burton (c 1801-____).

Squire Burton and Rebecca Rhea were married in Rhea Co., TN., 31 Jul 1822. The family was in Hardin Co., TN for the 1840 census and some of the family in Clark Co., AR for the 1860 census. Some remained in Hardin County and the adjoining Mississippi Counties. Some members moved on into Eastern Oklahoma. They had ten known children, and this book covers the descendants of these in some detail. There are many family photos and codument copies included. If you are searching the Burton family in TN, MS, AR or Northeast OK, you will want to check out this book. 1996, 8½ x 11½, 280 pp, indexed for only Burton names, photos. Soft Cover.

* * * * *

TITLE: FAMILIES OF COUNTY GALWAY by Michael C. O'Laughlin. (Volume 6 of a series).

ORDER FROM: Irish Families, Box 7575, Kansas City, MO 64116. Online @ www.Irishroots.com or www.amazon.com.

COST: v1. Irish Families great and small \$32.95

- v2. Families of County Kerry \$32.00
- v3. Families of County Clare 32.00
- v4. Families of County Cork 32.00
- v5. Families of County Limerick 32.00
- *v6. Families of County Galway 32.00
- v7. Families of County Dublin 32.00
- P&H \$4.00 first book - 50¢ each additional book. Complete 7 volume set \$231.95 postage paid.

The Irish Genealogical Foundation has printed this set of books which will be an invaluable reference source on Irish Family history and genealogy. Vol. 1 is the master index to the set, covering all of Ireland and North Ireland. Two thousand families have special entries, Coats of Arms are given for over 600 families. The additional volumes provide local maps and research aids for a specific county and additional information on the families in that county. Vol. 6, which was furnished for this review, is well-written and has much information about the early families of County Galway. If you are researching Irish roots you will need Vol. 1 and the County volume from where your ancestors came. Books are 6 x 9, Vol. 395 pp, other Vol's 178-272 pp ea. Index, Hardcover.

* * * * *

TITLE: EDGEFIELD COUNTY, SOUTH CAROLINA: DEED BOOKS 27, 28 and 29. Abstracted by Carol Wells.

ORDER FROM: Heritage Books, Inc., 1540-E. Pointer Pl., Bowie, MD 20716.
Credit Cards 1-800-398-7709. On Line (Secure) www.hb-archives.com.bookordr.htm.

COST: \$23.00 + \$5.00 P&H 1st Item, \$1.00 each additional item.

When these deeds were written, Edgefield contained all or parts of the present counties of Aiken, Greenwood, McCormick and Saluda. Deed books contain not only land conveyances, but powers of attorney, depositions, judicial, sales of goods and slaves. The following deed books are available for purchase:

<u>Book Number</u>	<u>Covers Period</u>	<u>Recorded</u>	<u>Pages</u>	<u>Price</u>	<u>Order No.</u>
13-14-15	1770-1790's	1796-1799	134	\$15.00	W149
16-17-18	1760-up	1798-1800	154	16.00	W154
19-20-21-22	1750-up	1800-1803	181	17.50	W155
23-24-25-26	1749-up	1804-1805	159	16.00	W156
** 27-28-29	1750-up	1806-1809	217	23.00	W157

**Book furnished for review has some 3,700 names of free persons and 200 slaves in it. This volume has some prenuptial agreements, deeds of gift, plus items listed in the first paragraph. This is a period of great change in Edgefield County. Large land grants were being divided and sub-divided. Many Quakers objected to slavery, sold their holdings and moved north. It will be almost impossible to determine a particular book which will have the transaction listed that you may be searching for. Many were held for years before being submitted for recording. 1998, 5½ x 8½, full-name plus place index, paper cover.

* * * * *

CORRECTION

In first quarter of THE GENIE 1999, page 27, Martha Stover's address should read 4431 N. Fairway Dr., Shreveport, LA 71109.

* * * * *

QUERIES

By Isabelle Woods

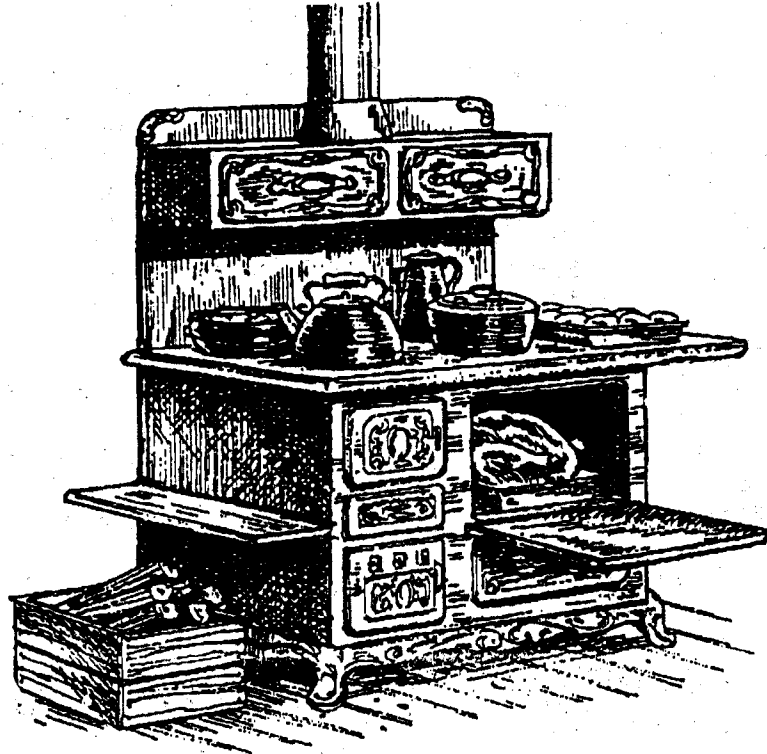
O'NEAL
DOWNEY
COLLINS
ANDERSON

John O'NEAL (d1778) and his wife, Patience _____? lived in Johnson Co., NC. Son, William (ca 1750-1796, Johnson Co., NC) and wife, Elizabeth _____? had Frederick (bca 1782 NC, who married Obedience _____? had son Bridgers, Jr. (uncle is Sr) (1812 NC-1862 Lavaca Co., TX, who married Elizabeth DOWNEY in 1836 in Marengo Co., AL. Her parents were Calvin and Phebe (ANDERSON) DOWNEY. Can anyone help, especially with surnames of wives? Contact: Marilyn M. COLLINS, 10 Bryanston Ct., San Antonio, TX 78218. (210) 820-3004.

CONNELL
GORDON
DIXON
ARMSTRONG

Need information on anyone with the following surnames in Caddo and DeSoto Parishes 1840-1950. CONNELL, GORDON, DIXON, ARMSTRONG. Where was C. B. CONNELL, 1850 DeSoto Parish census from in NC? Which NC County? Contact: Randall CONNELL, 810 Voyager, Houston, TX 77062-5619.

* * * * *





Looking over new books donated to the parish library are (seated) Joni Smith, Jacque Dodd, Wanda Berry, Fran Morris; (standing) Dennis Freeman, Glenn Price.

DAR books donated to library

The *DAR Patriot Index, Centennial Edition* set of books was donated on Friday to the DeSoto Parish Library system by Jacque Bradford Dodd, regent, Shreveport Chapter NSDAR in honor of her sister Gwen Bradford Sealy, national reporter general, National Society Daughters of the American Revolution.

Attending the event were the Mayor Dennis Freeman, Glenn Price, a local historian, DeSoto Parish Librarian, Wanda A. Berry, Assistant Director Fran Morris, Logansport Branch Librarian Joni Smith, and Mrs. Dodd.

These books Part I, II and III contain compiled data extracted from original applications of members of the Daughters of the American Revolution, from published refer-

ences and from exhibits of proof, such as authenticated copies of unpublished documents which are on file in the office of the Registrar General, NSDAR in Washington DC.

They list the names of the Revolutionary patriots, both men and women, whose service (between 1774 and 1783) and whose identity has been established by the National Society. Daughters of the American Revolution from its organization in October 1890 through the 100th birthday in October 1990. Included are alphabetically listed names, dates and places of birth and death, name(s) of wife (wives) or husband(s), rank and type of service and the state where the patriot lived or served. If pension papers are known to exist, that is also indi-

cated.

Another book, *DAR Patriot Index, Vol. III* was also donated. This is an index of the spouses of soldiers and patriots on whose service women have joined the NSDAR.

Mrs. Dodd requested on behalf of the local DAR chapter and the DeSoto Historical Society that anyone who knows the whereabouts of any Revolutionary War soldier should identify the location to allow "proper recognition and respect for their lives."

"These books were donated for others to enjoy while seeking their heritage. They will be placed in the DeSoto Parish Library's Main Library in Mansfield, and be accessible for use by people from all of the branch locations," said Mrs. Berry.

JOLLEY'S CHAPEL CEMETERY

(This cemetery was copied from Mildred Watkins' column in The Times from July to September 1984. It lies about 12 miles west of El Dorado, AR in Union County.)

Cauncil B. ADAMS 14 Dec 1867 11 Apr 1955	1905-1942 w/o M. W. BAILEY	James Harry BROWN 6 Oct 1903 19 Dec 1951
Frank ADAMS 29 Aug 1899 18 Feb 1901	Elisha T. BAILEY 23 May 1909 3 Jul 1947	Jim M. BROWN 8 Jun 1875 16 Sep 1950 h/o Lucy BROWN
Inf ch/o A.E. & W.L. ADAMS 6 Apr 1893 17 Jun 1898	James BAILEY d 15 Oct 1928	Lucy BROWN 6 Sep 1880 (death date not shown) w/o Jim M. BROWN
J. C. ADAMS 20 Feb 1836 7 Mar 1914	Arah C. BAKER d 1899 d/o A.E. & Margaret BAKER	Neal C. BROWN 19 Feb 1908 15 Jul 1944
Mrs. J. P. ADAMS 28 Jan 1876 6 Jul 1913	Mary BELL 29 Oct 1887 18 Apr 1920 w/o J. R. RICHARDSON	Russell M. BROWN 18 Jan 1936 21 May 1937 ch/o W. L. BROWN
Joseph P. ADAMS 24 Aug 1875 29 Jul 1914	Mollie DUKE BERELEY d 6 Apr 1956 age 86	Alma BURDINE 23 Nov 1904 11 Aug 1926 ch/o T. L. BURDINE
Mary Elizabeth ADAMS 15 Jan 1840 6 Jan 1924	Lizzie BIRD 2 Feb 1848 12 Sep 1926 w/o Thomas H. BIRD	Loyce A. BURDINE 22 Dec 1906 10 Jun 1952 h/o Mary O. BURDINE
J. Lester ALLEN 1895-1926	Maggie M. BIRD 8 Apr 1877 14 Sep 1890	Mary O. BURDINE 9 Oct 1913 11 Nov 1955 w/o Loyce A. BURDINE
John Duncan ALLEN 1869-1942	Thomas H. BIRD 6 Sep 1845 25 Apr 1927 h/o Lizzie BIRD	Myers B. CARELOCK 3 Nov 1873 16 May 1938
Mary HELMS ALLEN 1863-1936 w/o J.D. ALLEN	Lillian BISHOP 16 Jun 1938 8 Nov 1939	James GARLAND CAMERON 13 Jul 1923 4 Oct 1941
Nannie ALLEN 1906-1916	Lizzie BISHOP 23 Sep 1918 9 Nov 1918	Eddie CARPENTER d 1936 age 29
Clifton BAILEY 9 Jan 1889 23 Jan 1907 s/o E. G. & C. L. BAILEY	Martha BISHOP 21 May 1886 28 Dec 1958	Mrs. R. P. CHAMBERS 18 Jan 1864 1 Oct 1940
E. G. BAILEY 25 Dec 1867 16 Mar 1909	Zelma BISHOP d 9 Oct 1911	
Mrs. E. G. BAILEY 24 May 1866 6 Feb 1934	Frank BROWN 24 Mar 1913 29 Mar 1946	
Ethel Lee BAILEY		

Robert P. CHAMBERS
14 Feb 1883
11 Mar 1954

Ella M. COCKRELL
16 Mar 1886
3 Aug 1947

Inf s/o T.L. COCKRELL
23 Jul 1923
26 Jul 1923

James TELLIS COCKRELL
23 Jan 1929
7 Oct 1953

John BOONE COCKRELL
1877-1942 h/o
Lillie WARWICK

Laura O. COCKRELL
27 Nov 1896
9 Dec 1944 w/o

Tommie L. COCKRELL

Lillie WARWICK COCKRELL
1883-(?) w/o

John BOONE COCKRELL

Minerva COCKRELL
10 Mar 1849

9 Oct 1919 w/o

Stephen R. COCKRELL

Stephen R. COCKRELL
7 Jun 1843

9 Jan 1933 h/o

Minerva COCKRELL

Sallie KINARD HANRY
1 Aug 1855

22 Feb 1938 w/o

James P. HANRY

William J. HANRY
1880-1958

S/o Byron & Lillian
HARE d 14 Mar 1942

Charles HARGROVE
d 10 Feb 1936

Emerson HARGROVE
d 20 Jan 1923

Heber HARGROVE
19 Apr 1892
23 Nov 1958

Pearl HARPER
4 Feb 1904
13 Jul 1931 w/o
Hodge E. HARPER

J. T. HARR
31 Jan 1885
9 Nov 1917

Pearl WARWICK
5 Jul 1892

9 Nov 1909 (also in-
scribed on this stone
d/o M. H. & Pearl
WARWICK HARR 1909 &
s/o M. H. & Minnie
CARELOCK HARR 1923

Charlie G. HENDRICK
24 Feb 1909
15 Oct 1913

Delona HICKS
10 Jan 1881
15 Dec 1910 w/o
M. H. CARELOCK

Eugene D. HICKS
1912-1958

J. B. HICKS
12 Jul 1888
3 Jul 1939

J. B. HICKS
6 Jul 1823
5 May 1885

J. B. HICKS
1894-1935

Jerry G. HICKS
15 Jul 1961
6 Aug 1961

John B. HICKS
9 Nov 1855
1 Feb 1893

Lee C. HICKS
21 Jan 1872
15 Jul 1938

Lenard L. HICKS
23 Feb 1878
5 Mar 1917

Maybelle R. HICKS
1916-1959

Matilda HICKS
18 Jul 1874-1953

Marion SHEPARD HICKS
24 Nov 1897
12 May 1939

Martha E. HICKS
12 Mar 1837
21 Sep 1905 w/o
John B. HICKS

Mary Elizabeth HICKS
1873-1937 w/o
Thomas Marion HICKS

Mary Ellen HICKS
14 Jan 1871
24 Jan 1913

Thomas Marion HICKS
1867-1903 h/o
Mary Elizabeth HICKS

William S. HICKS
6 Apr 1851
12 Nov 1914

Casatea LEUMER
1 Jan 1879
2 Dec 1924 h/o
M. BECK LEUMER

Charlotte MAPLES
(Mother) d 16 Dec 1905

John FLETCHER MAPLES
16 May 1876
17 Sep 1958

Mahalie MAPLES (Sister)
d 4 Nov 1905

James F. McCLESKEY
4 Mar 1833
8 Sep 1913

C. C. McCLESKEY
24 Dec 1942 age 65 yrs

Sallie FOWLER McCLESKEY
8 May 1840-(?)

Clifton B. McDANIELS
d 22 Jul 1944 age 36 yr
8 Mos 16 days

Dovia Jean McCULLAR
28 Nov 1941
30 Nov 1941

Nancy E. MEANS
14 Aug 1854
7 Apr 1938 w/o
Philip Martin POWLEDGE

Elmer MILLER
13 Jun 1884
25 Jan 1939

Beckie MILLICAN
5 Jul 1918
4 Jun 1938

May MILLICAN
10 Jun 1896
7 Aug 1936

Frannie HELMS MILLS
1870-1935 w/o
Joseph W. MILLS b 1878

John T. MILLS
6 Jul 1891-(?)

Wheeler W. MILLS
8 Apr 1889-(?)

Alexander MODISETTE
11 Oct 1839
29 Nov 1918

Augustus T. MORGAN
4 Sep 1870
14 Nov 1932 h/o
Edna POWLEDGE

Edna POWLEDGE MORGAN
15 Aug 1877
5 Jul 1949 w/o
Augustus T. MORGAN

Ezekiel (Shack) HUNTER
MORGAN 13 Jun 1874
9 May 1942

J. C. MORGAN
4 Jan 1857
19 Jan 1943

Inf d/o M.L. & Vera
MORGAN d 2 Sep 1923

Inf s/o Cleveland
MORGAN d 8 Feb 1890

Lorene MORGAN
1 Dec 1910
4 Apr 1911

Mary EVANS MORGAN
19 Sep 1855
26 Jul 1912

Mary F. B. MORGAN
30 Aug 1869
29 Aug 1893 w/o

R. S. MORGAN

Ross MORGAN
1 Feb 1907
14 Jul 1907

Vera RUPLE MORGAN
9 Feb 1901
19 Nov 1925

William L. MORGAN
27 Oct 1866
20 May 1933

James G. MOSS
13 Oct 1914
25 Apr 1938

Martha L. MOSS
22 Nov 1882
7 Aug 1900 d/o

S.D. & M.J. MOSS

Martha Jane MOSS
21 Aug 1846
10 Dec 1930 w/o
Stephen D. MOSS

Stephen D. MOSS
22 Jun 1842
13 Aug 1929 h/o
Martha Jane MOSS

Stevens HICKS MOSS
20 Nov 1924
23 Jun 1926 ch/o

Rachel & Vergia MOSS

Ellar PEARSON
19 Sep 1874
22 Aug 1918

Jane W. PICKERING
15 Oct 1825
23 Dec 1907

Bessie PONDER
1 Oct 1897
10 Sep 1912 ch/o
S.E. & I.O. PONDER

Charley H. PONDER
26 Sep 1902
2 May 1910 ch/o
S.E. & I.O. PONDER

Eliza C. PONDER
18 Mar 1896
5 Feb 1918

Eva Inez PONDER
18 Jul 1904
25 Sep 1911 ch/o
S.E. & I.O. PONDER

Evan Dutch PONDER
1917-1943

Octavia BRITT PONDER
1871-1949 w/o
Sam Elijah PONDER

Sallie Bessie PONDER
1 Oct 1897
10 Sep 1912 ch/o
S.E. & Tavie PONDER

Samuel Elijah PONDER
1870-1960 h/o
Octavia BRITT PONDER

Lewis PESTER
24 Feb 1903
31 Oct 1918

Clement POWLEDGE
1910-1911

Effie Lee POWLEDGE
24 Feb 1885
21 Feb 1920

Franklin W. POWLEDGE
1875-1947 h/o
Lula EMERSON POWLEDGE

G. R. POWLEDGE
8 Dec 1868
9 Mar 1939

Hugh Martin POWLEDGE
24 Jul 1875
23 Apr 1959

POWLEDGE Infant
(no dates)

Inf POWLEDGE Girl
24 Feb 1919-24 Feb 1919

Inf d/o W.F. & Anna
POWLEDGE 1921

Inf s/o Hugh & Lucy
POWLEDGE 18 Oct 1905

Inf s/o Hugh & Lucy
POWLEDGE 15 Aug 1906
20 Aug 1906

Irma HEATH POWLEDGE
7 Dec 1903
30 Sep 1923

Jacob Martin POWLEDGE b 16 Oct 1852 Meriwether Co., GA d 13 Mar 1933 h/o Mary Ellen MORGAN	Lillie Mae RUSSELL 29 Nov 1900 10 Oct 1957	Sallie E. SEWELL John Henry SEWELL 1878-1946 h/o Amanda BRITT
John Robert POWLEDGE d 5 Sep 1959 age 78 y 2 m 12 days	David SCOTT 25 Sep 1840 3 Mar 1907 h/o Nancy J. SCOTT	Lena G. SEWELL 27 Jun 1871 28 Mar 1956
Lena May POWLEDGE 1881-1931	Nancy J. SCOTT 8 Jan 1847 31 Apr 1929 w/o David SCOTT	Loyce SEWELL 17 Nov 1921 13 Mar 1932
Lula EMERSON POWLEDGE 1873-1911 w/o Franklin W. POWLEDGE	D. F. SELLERS 14 Oct 1877 24 Dec 1923	Sallie E. SEWELL 7 Jul 1845 2 Sep 1928 w/o John A. SEWELL
Mary Ellen POWLEDGE 14 Nov 1849 Meriwether Co GA d 18 Apr 1910 w/o Jacob Martin POWLEDGE	Ch/o D.F. & M.R. SELLERS 23 Jul 1917 13 Dec 1918	Walter DUKE SEWELL 29 Jan 1872 28 Oct 1954 h/o Ethel VANTREASE SEWELL
Martin POWLEDGE 13 Sep 1852 1 Dec 1918 h/o Nancy E. MEANS	Perlina E. SESSOMS 23 Apr 1883 23 Jul 1920	SHEPARD Infant 1959
Willie Ruth POWLEDGE 29 Dec 1891 22 Jan 1900 d/o J.M. & M.E. POWLEDGE	S. G. SESSOMS 13 Apr 1879 23 Jun 1925	Mildred Pauline SPEARS d 13 Aug 1961 age 41 y 10 m 5 d
Emma ADAMS PRICE 13 Jan 1872 29 Dec 1934	A. V. SEWELL 28 Dec 1890 6 Nov 1945	Inf s/o Paul & Barbara STONE 11 Sep 1959 12 Sep 1959
Maggie L. PRICE 25 Mar 1878 30 Sep 1955 w/o Redic L. PRICE	Emma F. SEWELL 14 Aug 1886 1 Feb 1887	Inf s/o J.S. SWINT 24 Apr 1916
Redic L. PRICE 5 Oct 1875 23 Sep 1953	Eleanor VANTREASE SEWELL 13 Aug 1875 23 Aug 1948 w/o Walter DUKE SEWELL	Inf s/o J.S. SWINT 18 Apr 1920
Stuart Randal-Inf s/o W.W. & A.L. RICHARDSON 13 Jan 1911 14 Jan 1911	G. P. SEWELL 7 Sep 1867 15 Apr 1942	J. S. SWINT 5 Jun 1869 15 Apr 1950
Mary RICHARDSON 9 Dec 1861 11 May 1942 w/o D.F. SELLERS	Carrie L. JUSTISS 27 Oct 1877 5 Apr 1899 w/o W. D. SEWELL	Era Jane TAYLOR 25 Dec 1899 11 May 1953 w/o Stanford C. TAYLOR
Ruth E. RICHARDSON 18 Oct 1910 12 Nov 1910	Inf s/o Rev. J.R. SEWELL 25 Nov 1930	Gracie TERRELL 29 May 1905 29 Oct 1905
William W. RICHARDSON 5 Dec 1908 27 Nov 1911	Inf s/o J.H. & A. SEWELL Apr 1908	Mary Lillie TERRELL 7 Sep 1881 28 Jun 1905
	John SEWELL 26 Aug 1842 11 Jul 1923 h/o	Willis M. THOMPSON d 29 Jan 1960 age 87 y 4 m 12 d

Ada Frances THURKILL
(no dates) w/o
Joseph F. SEWELL

P. G. THURMAN
28 Feb 1905
6 Sep 1912

Edna W. WALLER
5 Mar 1889
16 Jul 1949

Ruby Altrie WALLER
29 Mar 1911
10 Oct 1923 ch/o C.S.
WALLER

Curtis WARWICK
18 Sep 1916
28 Sep 1933
Inf d/o M.A. & Lizzie
WARWICK 15 Nov 1916
16 Nov 1916

Lou Patricia WARWICK
4 Jan 1862
23 Nov 1897

Marshall A. WARWICK
10 Mar 1877
5 Sep 1897 h/o
Elizabeth C. WARWICK
b 20 Jan 1883

Ophelia WARWICK
25 Jan 1858
11 Jan 1930

William L. WARWICK
27 Oct 1853
19 Oct 1932

Benjamin H. WELCH
22 Feb 1849
14 Jan 1935 h/o
Mattie Martha WELCH

Carlton WELCH
1918-1928

Chloe D. CALAME WELCH
13 Mar 1908
26 Nov 1944

Elizabeth WELCH
5 Apr 1879
3 Jan 1919 w/o
J.H. WELCH Ch/o
S.D. & M.J. MOSS

Evelyn WELCH
1910-1931

Jessie H. WELCH
29 Sep 1876
10 May 1957

Lillie WELCH
18 Mar 1876
10 May 1957 w/o
M.D. WELCH

Florence M. WELCH
28 Oct 1877
23 Aug 1943 w/o
I. GLADNEY WELCH

Mattie Martha WELCH
18 Apr 1849
17 May 1935 w/o
Benjamin H. WELCH

Minnie PRICE WELCH
29 Nov 1904
12 May 1959 w/o
Bonnie H. WELCH

Roy Lee WELCH
6 Mar 1927
12 Sep 1931 s/o
B. H. WELCH

Alice PRICE WISE
11 Apr 1864
27 Nov 1936 w/o
Lee B. WISE

Lee B. WISE
21 Mar 1864
29 Jun 1944 h/o
Alice P. WISE

Margaret WOODLIEF
d 1 Dec 1945 age 50 y

James W. WRIGHT
13 Feb 1875
11 Apr 1950 h/o
Maybell ANGLIN WRIGHT

Martha WRIGHT
26 Apr 1848
23 Jun 1924 w/o
R. J. WRIGHT

Maybell ANGLIN WRIGHT
20 Oct 1880
7 Oct 1948 w/o
James W. WRIGHT

Thompson D. WRIGHT
d 23 Feb 1937 age 20 y
7 m 28 d

Inf s/o D.E. & Juanita
WYATT b & d 3 Oct 1939

* * * * *

SHILOH CEMETERY

(This cemetery appeared in Mildred Watkins' column in The Times in 1983.
It lies southwest of El Dorado on Highway 15, in Union County.)

Amanda BRITT 10 Sep 1823 17 Jan 1916 age 93 yr 3 mo 27 days w/o John M. BRITT	Leurie Lynn BRITT 15 Aug 1903 11 Jun 1905	b & d 13 May 1907 ch/o T.J. & M.C. EVERS
Beatrice BRITT 27 Jan 1900 11 Jul 1919	Mattie BRITT 23 Oct 1845 13 Mar 1935 w/o Henry D. BRITT	Effie FOSTER 10 Aug 1901 5(6) Mar 1902 d/o G.E. & N.I. FOSTER
Emma J. BRITT 25 Dec 1861 15 Jan 1938	Nan BRITT 3 May 1853 11 Jul 1950	Lydia BRITT HANRY 14 Mar 1862 15 May 1940 w/o Samuel George HANRY
Eula BRITT 10 Dec 1884 14 Jul 1894 ch/o R.M. & E.J. BRITT	Rufus M. BRITT 6 Jan 1859 4 Nov 1937 h/o Emma J. BRITT	Samuel George HANRY 4 Oct 1849 25 Jan 1923 h/o Lydia BRITT
G. G. BRITT 11 Jan 1845 20 Apr 1923	Wallace S. BRITT d 28 Mar 1943	G. Chester HIGHT d 16 Sep 1943 age 65
Henry D. BRITT 15 Jan 1853 2 Apr 1935 h/o Mattie BRITT	Wamanor (?) Lee BRITT d 27 Mar 1935	C. W. HUDSON 11 Jun 1822 29 Mar 1895
Inf d/o G. & J.L. BRITT 28 Feb 1895 17 Sep 1895	Inf ch/o J.P. & Nettie ALLEN 8 Apr 1919 21 Apr 1919	HUDSON Inf. d/o A.M. & Lena HUDSON 20 Mar 1909 25 Nov 1909
Inf d/o K.M. & M. BRITT b & d 22 Feb 1920	J. P. ALLEN 22 Apr 1883 12 Apr 1920	Inf s/o A.M. & Lena HUDSON b & d 27 Oct 1910
Jessie BRITT 30 Mar 1887 20 May 1919 w/o W.R. CLAY	James CAMERON 13 Jul 1923 4 Oct 1941	Joe Tubal HUDSON 6 Mar 1886 31 Dec 1900 ch/o D.K. & R.A. HUDSON
Jno M. BRITT 3 Oct 1819 14 Jun 1900 h/o Amanda BRITT	W. R. CLAY 31 May 1883 20 May 1919 h/o Jessie BRITT	Rebecca A. HUDSON 22 Jul 1858 21 Aug 1905 w/o D.K. HUDSON
Joe M. BRITT 15 May 1880 22 Mar 1911 d/o H. D. BRITT	Nellie M. DAVIS 2 Sep 1889 30 Nov 1960	Gloria Dean KINAID b & d 1939
Jonathan BRITT d 27 Feb 1943 age 82	Mary Frances EASTRIDGE 15 Jan 1849 23 Feb 1925	Andrew B. LANGLEY 15 Jul 1903 23 Oct 1923 ch/o I.N. & M. E. LANGLEY
Julia L. (VONE) BRITT d 18 Jun 1959 age 91 yr 2 mo 3 days	R. G. EASTRIDGE 23 Apr 1882 15 Jul 1906 Lonnie EVERS	Edward H. LANGLEY 13 Apr 1905 22 Sep 1950 h/o Floy Z. LANGLEY

Inf s/o J.N. & M.E.
LANGLEY
7 Dec 1906
11 Dec 1906

David PARKS LEDBETTER
25 Feb 1892
13 Jun 1950

Julia A. LEWIS
11 Jul 1888
17 Feb 1920

Clyde G. LOFTIN
17 Nov 1951
6 Dec 1951

Frances P. LOFTIN
25 Mar 1948
26 Mar 1948

George Eugene LOFTIN
5 Jan 1865
11 Mar 1942 h/o

Rebecca ROBERSON LOFTIN

Rebecca ROBERSON LOFTIN
9 Feb 1874
16 Nov 1943 w/o
George E. LOFTIN

Lula McWILLIAMS
31 Mar 1867
30 May 1923

Watson McWILLIAMS
19 Feb 1879
4 Mar 1918

Vernon David RICHARDSON
10 Jan 1912
1 Dec 1950

Mrs. C. E. ROBERSON
26 Sep 1843
16 Sep 1920 w/o
J. C. ROBERSON

J. C. ROBERSON
28 Oct 1838
12 Apr 1907 h/o
Mrs. C.E. ROBERSON

A. A. SMITH
1 Oct 1834
19 Sep 1902

Elbert O. WARREN
21 Jun 1927
28 Mar 1928

Andrew Marcellus WILSON
d 30 Mar 1961 age 90 yr
2 mo 29 days

Bill WILSON
2 Feb 1918
26 Jul 1918

Bruister WILSON
25 Jan 1922
11 Mar 1922

Lula WILSON
24 Feb 1915
3 Aug 1918

M. E. WILSON
21 Sep 1873
1 Feb 1912 w/o
A.M. WILSON

Obie Marcelous WILSON
7 Apr 1927
7 Nov 1927

Obist Eugene WILSON
7 Apr 1927
21 Jun 1929

Triplets of A.M. & M.E.
WILSON b & d 9 Sep 1916

(Canvassed 1961)

* * * * *



SURNAME INDEX SECOND QUARTER 1999

ADBOTT 65	BOWLIN 85	COYLE, JR 71, 72	FIELD 86
ADAMS 94, 97	BOX 86	CRAIG 86	FIELDER 85
ADDY 86	BRADFORD 85, 93	CRAMER 86	FIELDS 86
ADGER 82	BRAY 86	CRAWFORD 61	FLETCHER 96
ADKINS 85	BRIGGS 86	CRIDER 85	FLOURNOY 62
AGEE 69	BRITT 99	CROOK 88	FORE 85
ALCORN 71	BROOK 86	CROOM 86	FORREST 86
ALLEN 84, 94, 99	BROUSSARD 85	CRUMP 86	FOSTER 61, 99
ALLSTOTT 85	BROWN 94	CULVER 85	FOURNET 86
ALYEA 85	BROWNLEE 61	DALZELL 60	FOWLER 96
AME 86	BRYAN 51, 54, 86	DAMPIER 86	FOX 85
AMI 86	BRYANT 65	DANIEL 85	FOXWORTHY 71
AMY 86	BURDINE 94	DAVIS 85, 86, 99	FRAILEY 68
ANDERSON 85, 92	BURKE 85	DAWSON 86	FRANCIS 70
ANGLIN 98	BURNLEY 85	DAY 84	FRENCH 68
ANSLEY 85	BURNS 67, 69, 85	DEARMAN 87	FUGATE 66
ARMSTRONG 86, 92	BURNSIDE 73	DeFEE 87	FUTCH 86
ARNOLD 59, 61, 62, 63, 64	BURTON 65, 87, 90	DEVORICE 86	GARLAND 86, 94
ASHLEY 68	BYRD 84	DICKSON 85	GARSEE 86
ATKINS 85	CAIN 86	DIETRICH 85	GELISPI 86
AUSTIN 87	CALAME 98	DILL 86	GEORGE 51, 52
AY 65, 66, 69	CALLONAY 86	DIXON 85, 92	GIBBONS 85
BAILEY 94	CAMERON 94, 99	DODD 93	GIBSON 86
BAKER 71, 85, 96, 94	CANNON 85	DODSON 85, 87	GILBERT 85
BANDY 87	CARELOCK 94, 95	DONAGHEY 52	GILISPIE 86
BARKER 67	CARLTON 86	DOOLEY 87	GILLMAN 87
BARLOW 87	CARMICHAEL 86	DOUGLAS 84	GLASSELL 61
BARLOW, JR 85	CARPENTER 94	DOWNY 92	GOFF 85
BARNES 87	CARR 51, 54, 57, 85, 86	DUKE 94, 97	GOLDSMITH 85
BAUGH 85	CARTER 85	DUNLOP 86	GOODWIN 84, 85
BAUGHMAN 55	CHAMBERS 94, 95	DUPREE 85	GORDON 85, 92
BEAM 85	CHANDLER 56, 85, 86	DUTTON 53	GORMAN 52, 85
BEAUBOUF 85	CHASE 60	DYKE 85	GOVERN 86
BEAVER 85	CHENEY 65	EASON 85	GOYNE, JR 82
BECK 96	CLARKSON 52	EASTRIDGE 99	GRAHAM 87, 88, 89
BECKLEHYMER 71	CLAWSON 69	EDWARDS 85, 86, 87	GRAVES 85
BEHYMER 71	CLAY 99	ELDRIDGE 87	GRAY 87
BELL 60, 94	CLEMENTS 85, 87	ELLISON 82	GREENMAN 93
BELLE 86	COATES 85	ELSTON 86	GREEN 85
BENJAMIN 85	COBB 57	EMBS 67	GREENE 87
BEREL 85	COCKRELL 95	EMERSON 979	GREER 54
BERELEY 94	CODAY, M JR 85	ENDSLEY 85	GREGORY 86
BERRY 87, 93	COLE 87	ENGELAND 66	GRIFFIN 52
BISHOP 94	COLEMAN 85	ERWIN 86	GRISHAM 53
BLACKMON 86	COLLINS 72, 73, 85, 92	ESTES 86	GRITZBAUGH 51, 53
BLACKSHIRE 85	COLVIN 51, 54	EVANS 85, 96	GROVES 86
BLANTON 69, 71, 90	CONNELL 85, 92	EVERS 99	GRUBBS 86
BODDIE 87	COOK 51, 54, 85	FARMER 51, 54, 57	HADEN 86
BOONE 95	COSTON 85	FARRINGTON 86	HADLEY 74, 75
BOOTH 61	COX 67, 70	FARTHING 68	HALE 87
BOREL 87	COYLE 65, 66, 68, 69, 70, 71, 72	FEAZEL 51, 53, 54, 57	HALL 74, 75, 82, 86
BOTZONG 86		FERGUSON 85	HALLGREN 52
BOWERS 85		FERRIER 86	HALVERSON 87
			HAMITER 74, 75

HAMMETT 86
 HANKINS 90
 HANRY 95, 99
 HANSEN 69
 HARE 95
 HARGROVE 95
 HARPER 95
 HARR 95
 HARRELL 86
 HARRIS 62, 74, 75
 84, 85, 86, 97
 HARRIS III 84
 HARRIS IV 84
 HARRIS, JR 84
 HARRISON 51, 74, 75
 HART 87
 HASTINGS 68
 HATCHER 86
 HAWKINS 87
 HAWTHORNE 86
 HAYDEN 74, 75
 HAYNES 74, 75
 HAYS 74, 75
 HEARD 52
 HEARNE 59, 60
 HEATH 74, 75, 96
 HEIFNER 74, 75
 HELMS 96
 HENDERSON 52, 65, 66,
 67, 70, 71, 72
 HENDERSON III 65
 HENDERSON, JR 65
 HENDERSON, SR 65, 66
 HENDRICK 95
 HENRY 74, 75, 85, 86
 HENSLEY 74, 75
 HERRON 74, 75
 HERSHNER 65
 HEWITT 65
 HICKMAN 74, 75
 HICKS 95, 96
 HIGHT 99
 HILL 74, 75
 HILLIARD 86
 HILLIER 74, 75
 HITCHCOCK 87
 HOBBS 74, 75
 HODGES 74, 75
 HOLLAND 74, 75
 HOLLEMAN 74, 75
 HOLLINGSWORTH 72, 74,
 75
 HOLLY 74, 75
 HOLMAN 74, 75
 HOLMES 74, 75, 85
 HOLT 74, 75
 HONEYCUTT 51, 53, 54
 HOOD 74, 75
 HOOKER 86
 HOPKINS 65
 HORNSBY 87
 HORTON 74, 75
 HOSKINS 68
 HOUSTON 74, 75
 HOWARD 51, 54
 HOWELL 86
 HUDSON 74, 75, 99
 HUEY 74, 75
 HUGHES 74, 75, 76,
 77, 86
 HULL 66
 HUNT 59
 HUNTER 96
 HUSBROOK 74, 75
 HUTCHINSON 62
 HYDE 86
 HYMER 71
 IRION 76, 77
 ISAACS 70
 IVEY 76, 77
 JACKS 86
 JENKINS 61, 76, 77,
 85
 JENNINGS 52, 59
 JETER 76, 77
 JOHANNSEN 69
 JOHNSON 76, 77, 85,
 86
 JOHNSTON 76, 77, 85
 JONES 76, 77, 82,
 86, 87
 JORDAN 85, 86
 JUSTISS 97
 KARCHER 85
 KEEBLER 57
 KEITH 76, 77
 KELLY 65, 76, 77, 86
 KENNEDY 53, 86
 KENNER 76, 77
 KERBO 86
 KERBOW 86
 KILGORE 76, 77
 KIMBALL 86
 KINAID 99
 KINARD 95
 KING 68, 76, 77
 KINTZING 52
 KIRK 76, 77
 KIRKLAND 76, 77
 KIRTLEY 76, 77, 86
 KNIGHT 90
 KRAUSE 52
 LaGRANDE 87
 LANDRY 86
 LANE 85
 LANGFORD 85
 LANGLEY 99, 100
 LARGARS 86
 LARKIN 78, 79
 LAWRENCE 76, 77
 LEANHART 69
 LEATHERMAN 78, 79
 LEDBETTER 100
 LEE 56, 76, 77, 78,
 79
 LeGRAND 87
 LEIGHTNER 78, 79
 LENDERMAN 65, 66, 67,
 69, 70, 71
 LENDERMAN, JR 66
 LESTER 78, 79
 LEUMER 96
 LEWING 85
 LEWIS 57, 78, 79,
 86, 100
 LINCOLN 73, 78, 79
 LINDERMAN 72
 LINTEMAN 72
 LOCKY 76, 77, 78,
 79
 LOFTIN 52, 100
 LOGAN 76, 77
 LOGSDON 66, 67, 68,
 69, 70, 71, 72,
 73,
 LOGSTON 71
 LONG 60, 76, 77
 LOVE 76, 77, 78, 79
 LOWE 76, 77, 78, 79
 LOY 76, 77, 78, 79
 LOYD 78, 79
 LUMLEY 85
 LUSK 76, 77, 78, 79
 LYLES 78, 79
 LYNN 78, 79
 MACKAY 78, 79
 MADINE 80, 81
 MAIKELL 80, 81
 MAJORS 66, 78, 79
 MALCOLM 87
 MALONE 67, 80, 81
 MANN 52
 MAPLES 96
 MARCUM 68
 MARSALIS 78, 79
 MARTIN 78, 79, 80, 81
 MASON 78, 79
 MATHEWS 86
 MATHIS 86
 MATLOCK 80, 81, 86
 MAURY 78, 79
 MAY 68, 80, 81
 MAYS 80, 81
 McAFEE 53
 McCANN 80, 81
 McAVOY 52
 McBRIDE 84
 McBROOM 86
 McCAA 80, 81
 McCALEB 80, 81
 McCANN 86
 McCARTY 86, 87
 McCLANAHAN 80, 81
 McCLELLAND 80, 81
 McCLESKEY 96
 McCOLL 80, 81
 McCORMACK 80, 81
 McCRAMI 80, 81
 McCULLAR 95
 McDADE 80, 81
 McDANIELS 95
 McDONALD 80, 81, 86,
 87
 McFARLAND 60
 McFERRAN 86
 McFERREN 86
 McFERRIN 86
 McGAHEY 86
 McGEE 68
 McIRWREATH 85
 McKEE 85
 McKELLAR 80, 81
 McKELVEY 86
 McKENZIE 80, 81
 McKinney 80, 81
 McLAUGHLIN 86
 McLaurin 87
 McMAIN 86
 McMILLAN 85
 McMOTH 80, 81
 McNEILL 86
 McWILLIAMS 100
 MEANS 96, 97

ARES 78, 79
 BRETT 78, 79
 DOLETON 78, 79
 MILLER 78, 79, 80, 81,
 96
 MILLICAN 96
 MILLS 96
 MINER 84
 MINER III 84
 MINER, JR 84
 MITCHELL 78, 79, 80,
 81
 MIXON 87
 NOBLEY 78, 79
 MODISETTE 96
 MODOWELL 78, 79
 MOFFETT 85
 MONTGOMERY 78, 79, 80,
 81
 MOORE 78, 79, 85, 86,
 87
 MOORING 86
 MOREII 65
 MORGAN 72, 80, 81,
 86, 96, 97
 MORRESON 80, 81
 MORRIS 93
 MORRISON 87
 MORROW 78, 79
 MOSS 78, 79, 96
 MOY 80, 81
 MULKEY 78, 79
 MURFF 80, 81
 MURPHEY 86
 MURPHY 71, 86
 MURRAY 72
 NASH 52, 86
 NEAL 86
 NIAGAR 87
 NICKLAS 87
 NORRIS 86
 NORTON 87
 O'LAUGHLIN 90
 O'NEAL 85, 92
 OLIPHANT 86
 OLIVER 52, 67, 86
 ORTON 85
 OWENS 86
 OXLEY 85
 PADGETT 86
 PARKS 100
 PEARSON 96
 PEDDY, SR 86
 PERKINS 85, 86

PESTER 96
 PETRY 87
 PEWINSKY 66
 PEYTON 86
 PHILLIPS 87
 PICKERING 96
 PICKETT 88
 PIERCE 87
 PITTMAN 85
 PLEASANT 52, 85
 POINDEXTER 87
 PONDER 96
 PORTER 86
 PORTESQUE 51
 POST 87
 POWLEDGE 96, 97
 POWELL 71
 POWELL 85
 PRICE 86, 93, 97,
 98
 QUEEN 85
 QUICK 71
 RABUN 51, 56
 RAINS 86
 RATLEY 87
 REEVES 86
 REIDHEIMER 86
 REIMER 65, 66, 69
 RHES 90
 RHODES 87
 RICHARDS 59, 60

 RICHARDSON 67, 68,
 70, 71, 94, 97,
 100
 RICHMOND 87
 RIFFE 85
 RINAUDO 87
 ROANE 54
 ROBERSON 100
 ROBINSON 85
 ROGERS 86
 ROSE 52
 RUCK 65
 RUPLE 96
 RUSSELL 97
 SABBATH 52, 83
 SADLER 86
 SANDEFER 86

 SANDERS 57, 87
 SANDIFER 86
 SANSON 86
 SCHELEMI 86

SCHUMPERT 59
 SCHWARTZBURG 84
 SCOTT 73, 97
 SEALS 86
 SEALY 93
 SEBASTION 65
 SELLERS 97
 SENTELL 58
 SESSOMS 97
 SEWELL 97, 98
 SEXTON 86
 SHAVER 87
 SHEPARD 96
 SHROCK 86
 SIMPSON 65
 SIMS 86
 SMEAT 86
 SMITH 100
 SMITH 54, 57, 69,
 71, 87, 93
 SNEED 87
 STANBERRY 87
 STANDAFER 68
 STEIN 52
 STEPHENS 85
 STERLING 33
 STINKA 69
 STONE 69, 97
 STRAYHAN 89
 STURGIS 66, 84
 SULLIVAN 85
 SWINT 97
 TAYLOR 54, 55, 87,
 97
 TELLIS 95
 TERRAL 52
 TERRELL 97
 THATCHER 61
 THIESON 66
 THOMA 86
 THOMAS 52, 69, 71
 THOMPSON 97
 THORNHILL 887
 THURKILL 98
 THURMAN 98
 TODD 68
 TOLER 66, 67
 TOMBLESON, JR 87
 TOMLINSON 87
 TRIMBLE 56, 57
 TRULL 87
 TUCKER 70
 TUDOR 67
 TUNGATE 68, 70

TUNGATE II 70
 TUNGATE, SR 71
 UNDERWOOD 51, 57
 VAN HOOK 54
 VAN VECKHOVEN 86
 VANCE 59, 60, 61,
 62, 63, 64
 VANTREASE 97
 VENABLE 87
 VENIS 65
 VESSELLS 85
 VINAFRU 69
 VINES 87
 VONE 99
 WALKER 85
 WALLACE 87
 WALLER 98
 WARD 54, 86, 87
 WARREN 86, 100
 WARWICK 95, 98
 WATKINS 94, 99
 WATTS 59
 WEAVER 86
 WEBB 85
 WEILAND 52, 90
 WELCH 98
 WELDON 87
 WELLS 70, 91
 WHATLEY 52
 WHITE 56
 WHITEHEAD 87
 WIESENER 66
 WILEY 85
 WILHITE 54
 WILKERSON 54
 WILKES 86
 WILLIAMS 86
 WILLIAMSON 85
 WILLIFORD 85
 WILLIS 85, 87
 WILSON 70, 85, 86,
 100
 WINBURY 86
 WINKLER 68
 WINTERS 87
 WOLFE 68
 WOLFORD 72, 73
 WOOD 51, 54
 WOODL 86
 WOODLE 86
 WOODLIEF 98
 WOODS 52, 86, 92
 WOODYARD 71
 WORLEY 87

WORSHAM 85
 WRIGHT 52, 85, 86,
 98
 WYATT 98
 YATES 87
 YOUNG 86
 YOUNGBLOOD 85
 ZAENGLEIN 84
 ZOLLENCOFFER 72

ARK-LA-TEX GENEALOGICAL ASSOCIATION
MEMBERSHIP APPLICATION & DUES REMITTANCE
P. O. Box 4462, Shreveport 71134

Date _____

Please print or type:

FULL NAME _____

ADDRESS _____ TELEPHONE _____
Street or RFD & No.

CITY _____ STATE _____ ZIP CODE _____

Your Family Surnames & States where located: (Four per member)

1. _____ 3. _____

2. _____ 4. _____

1995 Membership Fee Per Calendar Year (1 January to 31 December): Individual, \$12.50; Family, \$15.00. Members receive four issues of THE GENIE each year. Queries are published free. Please complete and attach this form to your check for 1995 dues.

New Member _____ Renewal _____

