

Non-Profit Org.  
U. S. Postage  
PAID  
Shreveport, LA  
Permit #562



---

VOLUME 33

FOURTH QUARTER 1999

NUMBER 4

---

PUBLISHED QUARTERLY BY  
**ARK-LA-TEX GENEALOGICAL ASSOCIATION, INC.**

P.O. BOX 4462  
SHREVEPORT, LOUISIANA 71134

## TABLE OF CONTENTS

"TROUBLE ON RED RIVER"-THE BOSSIER RIOTS	151
HUMBLE-ROBINSON AHNENTAFEL	158
AUGUST HANNEMAN(N)-PAPA	159
DIGGING YOUR ROOTS, A TO Z-TO CALCULATE AGE FROM TOMBSTONE	162
HISTORY OF FARMERVILLE, LOUISIANA	163
IN MEMORY	168
TAUZIN-DIXON AHNENTAFEL	169
GOODWIN-WILSON AHNENTAFEL	173
LOUISIANA TROOPS-TRANS-MISSISSIPPI IN CIVIL WAR	176
LOUISIANA VOTER REGISTRATION 1898-RED RIVER PARISH, LOUISIANA	177
ALTGA COMMITTEES	181
PEDIGREE CHART-RAYMON L. OWENS	182
REAMS BIBLE-MAXWELL-BEESON FAMILY	183
MEMBERSHIP LIST, FOURTH QUARTER 1999	189
BOOK REVIEWS	190
FROM THE SHORES OF BAYOU LA FOURCHE	193
QUERIES	194
BEAR CREEK CEMETERY, BIENVILLE PARISH, LOUISIANA	195



THE GENIE is published quarterly. Each member receives four issues for each year of membership. All material published in THE GENIE is compiled and contributed by the members. THE GENIE exchanges periodicals with other genealogical-historical organizations publishing data of general interest. We regret that we cannot exchange with limited family organizations, but invite them to send samples of their publications for brief review, since many of these family organizations are of great value in information on the family covered by them.

All members of the staff of THE GENIE are volunteers:

PRINTING.....	James & Patsy Oliphant, Victor C. Rose
TYPING & COMPUTER INDEXING.....	Ethel E. Krause
QUERIES.....	Isabelle Woods
BOOK REVIEWS.....	Herman Weiland
LABELS.....	Michael Broussard
COLLATING.....	Lillian Hope, Ethel Krause, Ed Krause, Herman & Veretta Weiland, Constance Whatley Lillian Nash
BULK MAILING.....	Carl & Pat Hallgren

\* \* \* \* \*

## BOARD OF DIRECTORS 1999

Allan Barlow, Jr.	868-1681	President
Marguerite J. Loftin	746-4598	1st Vice President
Willie R. Griffin	631-6031	2nd Vice President
Constance Whatley	861-4336	Recording Secretary
Victor C. Rose	687-3673	Corresponding Secretary
Ethel E. Krause	746-3125	Treasurer
Roy L. Henderson	861-7449	Trustee
Vernelle Rose	687-3673	Trustee
Sharron McAvoy	868-4723	Trustee
Betty Jon Gorman	868-2807	Trustee
Reed C. Mathews	868-0036	Past President

The ARK-LA-TEX GENEALOGICAL ASSOCIATION, Inc., is a non-profit, non-sectarian, non-political, educational organization dedicated solely to the cause of genealogy, which includes the following purposes: to collect, preserve and make available genealogical materials, documents and records; to encourage an interest in genealogy and to sponsor educational programs for its development; to promote and publicize the City of Shreveport, Louisiana, as a major genealogical research center for genealogists and historians; to cooperate with and assist all other genealogical, historical, patriotic societies in the furtherance of these purposes; to compile and publish a quarterly composed of records and data related to the Science of Genealogy.

**REGULAR MEETING:** Second Saturday of each month, 1 P.M. to 4 P.M. at the Randle T. Moore Senior Citizen Center, 3101 Fairfield Ave., Shreveport, LA, with the exception of the second Saturday in August when the annual seminar is held. Time and place announced later.

**MEMBERSHIP DUES:** 1 Jan to 31 Dec-Individual \$12.50, married couple \$15.00. All members to receive four issues of THE GENIE, which is published quarterly.

**BOOK REVIEWS:** Reviews of books of genealogical interest will be published in THE GENIE as donated by publisher or author. These books are then made available to the public through the Genealogy Department of Shreve Memorial Library, as is all other genealogical material of the Ark-La-Tex Genealogical Assn.

**QUERIES ARE FREE:** They must not be over 70 words and must be typed or plainly printed.

This publication is indexed in the PERiodical Source Index published by the Allen County Public Library Foundation, Ft. Wayne, IN.

ARK-LA-TEX GENEALOGICAL ASSOCIATION IS NOW ON THE INTERNET! Web address is [www.softdisk.com/comp/aga](http://www.softdisk.com/comp/aga). e-mail [aga@softdisk.com](mailto:aga@softdisk.com).

\* \* \* \* \*

## **"TROUBLE ON RED RIVER" - THE BOSSIER RIOTS**

**by Dale Jennings**

Available contemporary accounts of the "riots," which occurred in September and October of 1868, are as divergent as their sources. The 1869 joint committee report of the Republican controlled state legislature, and its freedmen witnesses, contradict news reports of the Bossier Banner and Shreveport The South-Western. It is difficult to believe that no other independent account has survived when considered that so many had personal knowledge of those events. Included are my wife Larri Jennings' Brownlees, Arnolds and Vances, who were participants, or were said to have been. The two sites where the violence erupted are identified now only by the "Vanceville Rd" and "Brownlee Rd" road signs which mark the junctions of those roadways with Benton Road. The little community centers at those sites--Shady Grove (later renamed Vanceville) and Brownlee--did not then exist as such, and are now long gone. Shady Grove, in northwest Louisiana's Bossier Parish (county), evolved around the plantation store on the Shady Grove Plantation. The plantation would be purchased by neighboring planter and physician, Dr. Samuel W. "Whitfield" Vance, a few months after the riots. Brownlee was named for the Brownlee family and plantation, just down river.

Change was slow to come after the Civil War on the big cotton plantations along the east side of Red River above Shreveport. The production of cotton was labor intensive, and the interdependence between planters and ex-slave tenant workers resulted in restraint by both -- maintaining civil order, while keeping the old plantation system there pretty much unchanged. The demographics on the wide flood plain, which provided the bounty of the central Bossier Parish river plantations, is illustrated by the 1870 population census. Of the 97 family households along the river from Thomas Gilmer's place north to Captain W. J. Carter's, 90 were black and 7 white. The total population of all households was 468 of which 24 were white and 444 black or mulatto. This is not surprising as most of the 8,000 slaves in the 1860 Bossier Parish slave schedules (by exact count) were to be found along the river. (For perspective, see the 1868 map of the Red River waterway.)

By 1868 the Radical Republicans had gained control in the U.S. congress, disenfranchising great numbers of ex-Confederates, and placing the Southern states under military occupation until deemed sufficiently "reconstructed." The state and local elections in the spring of 1868 saw mixed success for white Democrats against Republican candidates in Bossier; but, the hated new state constitution was ratified by the voters. The Bossier Banner was especially aggravated that two white men in the parish had voted for the "scalawag constitution." The paper probably reflected the general sentiment of the white populace in wanting to learn the identities of "the two

greatest skunks in Bossier." That broad strip of Red River alluvial plain in central Bossier Parish, with its large plantations and disproportionally heavy black population, did not escape the political friction and racial undercurrent incident to the approach of the November presidential election. An incident taking place in late September precipitated what became known as the "Bossier" or "Shady Grove riots." The scene was the Shady Grove Plantation, one of the old George Gilmer plantations, only recently acquired by the Shreveport plantation outfitting firm of Walsh & Boisseau.

On October 3, the Bossier Banner reported, under the headline, "Trouble on Red River," that on or about September 28, a robbery had been committed in the parish on Red River above Shreveport. This by several Negro freedmen against a citizen of Columbia County, Arkansas; and that a considerable body of white men from that county subsequently came down to investigate the matter and to arrest the guilty parties. Also, that Messrs. James Brownlee and Beverly Ogden, who apparently had been instrumental in releasing the Arkansas man, were themselves arrested by undoubtedly the same band of freedmen; then shot in cold blood. Ogden was said to have died within hours while Brownlee, by last account, lingered still, with little hope. It was reported that runners sent out through the area and to Shreveport returned with many citizens and the military, to find some 300 Negroes banded together. The paper went on to say that, "Skirmishing took place between advanced parties resulting in the killing of several freedmen. But when the main body of the U. S. military arrived in sight, the large band of Negroes dispersed, and have not been since found. The laborers of Griswold's plantation, the Shady Grove and Gold Point places, and M. Baer's place, have deserted their homes, and are supposed therefore to be the rioting party. We learn that the U. S. troops will camp at Benton until the troubles cease, which perhaps has already happened. We hope to be able to give full particulars in our next, and would be thankful to any one to set us right on any point wherein we may be mistaken." The weekly Bossier Banner never again reported on the matter.

The South-Western's October 7th coverage of events reads, in part: "Last Saturday week three gentlemen, from Arkansas, left this city for their homes with their wagons and teams. When near Shady Grove plantation that night, one of the white men had some conversation with some of the negroes of the place about the purchase of corn and fodder, which ended in harsh language and the firing off of a pistol. It is not known who fired the pistol, but nobody was injured. During the night the negroes gathered to the number of two hundred, armed with guns and pistols, and made an attack on the three whites. One of them, whom they accused of firing off the pistol, was taken from the wagon and chained by the neck to a tree. ....It was with the utmost difficulty that three or four white men, well known to the negroes, succeeded in appeasing them and procuring the release of the white man. ....Matters rested then in a quasi state until daylight Wednesday morning, when the Shady Grove place was surrounded by a party of thirty men from Arkansas, headed by the celebrated Cullen Baker, who demanded the negroes who commenced the disturbance on Sunday. A short fight ensued which resulted in the killing of a negro and the mortally wounding of



three. Baker and his party then moved off, taking with them five negro men, which they afterwards hung or shot. This roused the whole negro population, and they commenced gathering along the road above Mr. Baer's plantation, near Mr. Saggus'. Two young men, Mr. Brownlee and Mr. Ogden, who had just crossed the river in a skiff from a cattle hunting expedition, were surrounded by them and disarmed. After a short parley they were turned loose, but they had proceeded but a short distance before they were fired upon and mortally wounded, both of whom having since died. This capped the climax, and information coming to this city of the state of affairs, volunteers, composed of our best citizens, started for the scene of action. ....At the earnest solicitation of a number of our leading citizens the scalawag Deputy United States Marshal made a requisition on the military for assistance. In the meantime the first party of volunteers had come up with the negroes at Smedley's, and assured them that they would not be hurt if they gave up their arms and retired peaceably. They were answered by a volley, which did not injure any one, though some of them had a narrow escape. About twenty five shots were fired when the negroes made a hasty retreat, and on the arrival of the troops not a negro could be found anywhere in the vicinity. The Arkansas delegation hearing of the shooting of Brownlee and Ogden, at once commenced an indiscriminate slaughter of the negroes wherever they could be found, no matter whether guilty or innocent. It is not exactly known how many they killed, but it is thought in the neighborhood of twenty. A gentleman who lives in the neighborhood informs us that he knows of fifteen negroes and two white men killed. The action of the Arkansas delegation has been much condemned by citizens, soldiers and the civil authorities in killing innocent negroes, who were promised protection by the citizens if they would stay and work. The military, under charge of the sheriff, tried to come up with Baker and his crowd, but at last accounts had not succeeded. At last accounts everything was quiet at the late scene of action along the river plantations, but not a negro was to be seen. They had evidently taken to the woods, where they will remain until they get over their scare."

(Eighteen-year-old James Cowen Brownlee was the brother of Larri Jennings' great grandmother, Lou Brownlee (later Mrs. John M. Arnold). Mr. J. M. Saggus was their step-father. Beverly J. Ogden was a member of another prominent Bossier Parish family. The South-Western announced in the same October 7 edition that Beverly Ogden died on Thursday, October 1st. Brownlee family genealogy gives James' death as October 1st also. The South-Western had earlier made reference to "Collen" Baker in connection with the "Cypress Swamp incident.")

The legislative committee, in investigating "the conduct of the late elections and the condition of peace and order in the state," found fertile ground in Bossier Parish. A hand written excerpt of its report, to include the testimony of its two witnesses, can be found in the John Manry Collection, LSU-S Archives. Inconsistencies in dates, i.e., "7's" apparently for "1's," and vice versa, probably resulted from errors in copying or in transcribing interview notes, and "13th" for "30th" was probably a misunderstanding between interviewer and witness. The report makes no mention of the "Arkansas

delegation" or the killing of Brownlee and Ogden; but, gives full credence to its witnesses, both of whom had fled to New Orleans, the state capitol. One witness was present at Shady Grove. His testimony, in part, follows.

"Henry Taylor states on oath, that he is a citizen and duly registered voter in N.O., La., and that on the 29th day of Sept., 1868, while he was at Shady Grove, Bossier Parish, he saw a colored man on a gally (sic); a strange white man approached and remarked to the colored man that he was a d---d radical. The colored man replied that he was a radical, when the white man drew a pistol and fired at him. He fell, but was not hurt. The white man then got in his wagon and covered himself up, but the colored men hearing the shot fired, ran from their quarters to the wagon and taking the white man out chained him and kept him as a prisoner, intending to take him to Bellevue and turn him over to the civil authorities. Captain Curtis, and other citizens of Bossier Parish, clubbed together that night and unchained him. He then went off, and brought back with him from 90 to 100 men, armed with revolvers, shot guns and rifles. When they arrived at the Shady Grove plantation, they commenced firing at the colored people, killing 8 men and 2 women. The women were killed while pleading for their husbands. After this they took 7 men to the Springs, six of them were killed, and one of them was shot and left for dead, but was able to return to the plantation. These white men learning that they had not killed all the men they took from the plantation, returned and killed the wounded man and his wife. They also saw some carpenters at work making coffins for the dead, whom they killed with the tools in their hands while at their work. The killed at Shady Grove plantation amounted to 18 men and 3 women. This armed band of white men took all the arms on the place. The colored men did not use any weapons or bad language. At Gum Springs, these men met a colored man, whom they ordered to take his hat off, which he refused to do, when they put a chain around his neck, cut his throat and hung him up to a tree. ....This band of white men went to the preachers' houses and brought them by force, and beat them with their guns, and made them swear never to spread the Gospel again. .... These white men who committed the murder were composed of citizens of Bossier Parish, and many of them leading planters. On the 7th of Oct. some 50 planters, well armed and mounted, went to Benton, La., and held a meeting. They started in squads to different plantations, killing men and women--20 colored men were killed that night. While the colored men were picking cotton in the fields they were shot down, without knowing who killed them or for what they were killed. The colored women ran away from Shady Grove plantation with their children, leaving everything. When witness returned to said plantation he saw about 25 white men there, some in the cabins and others standing about with their guns in their hands, and heard them say that they intended to kill every man, woman and child on the Dixon plantation (18 miles from Shreveport, La.) near Carolina Bluff. The remaining colored men who were on the plantation left for fear of losing their lives. Witness then left with his wife."

("Captain Curtis" may have been Captain W. J. Carter. The Gum Springs were located on the Dicksons' Gum Springs Plantation above Benton. The planters most probably

would have met on the 1st of October, immediately after the killing of Brownlee and Ogden. It is unclear, and may have been a misunderstanding, as to what misdeeds the witness attributed to the band of armed white men (the Arkansas delegation?) and which to the Bossier planters.)

The testimony of the committee's other witness expressed through his interviewer follows, by quote and in substance.

"Isaac Young, a resident and duly registered voter of Bossier P., states on oath, that he was a laborer on Dr. Vance's plantation; that on or about the 13th of Sept., 1868, about at daylight in the morning, a party of white men, among whom were John Vance, Thomas Vance, Calvin Vance, Whitfield Vance, Captain Carter, James Brownlee, \_\_\_\_\_ Ogden, William Haynes, Griffin Cheatham, Marsh Griffin, John Arnold, Bob Stinson, William Agent, Joe Graham, Tom Marks, Bill Marks, Andrew Marks, George McAuley, and James McAuley, all residents of Bossier, came to Dr. Vance's plantation and took from there the following named colored men: Simon Crawford, Alex Arnold, Jeff Williams, Steve Vance, and 2 others named Steve and Bob. These latter they took to Benton and killed, and the rest they killed at Gum Springs, a few miles above." Mr. Young told the interviewer that he had fled from Dr. Vance's plantation that morning to avoid being taken with the others, and then returned and hid under the house. While thus concealed, he said he saw John Vance and Jim Saunders fatally shoot one Chambers when Chambers refused to go with them to Benton. Young testified that on Friday, October 2nd, Fred Kinney came to him and said that he had been released by the white men for the purpose of betraying Young into their hands. He stated to Young that Doctor Vance had ordered the man Bob killed; saying that he was too much of a radical for him. And, that he was then killed by a large Bowie knife being put on his shoulder and driven down into his heart; whereupon, the colored men were made to kneel down about the deceased and look him in the eyes. Kinney also stated to the witness that before reaching Benton, the party met two black women on horseback, and hanged them from a tree with lariat ropes. "For two weeks after these events, witness was pursued and searched for by these white men, but succeeded in eluding them, and, believing that his life was not safe in the parish he came to N.O. These white people had a spite against witness, as he was a Republican and had assisted the Republican Party. The name of witness was mentioned among others as the object of revenge, etc."

(References to Dr. Vance's plantation are assumed to be to Dr. Whitfield Vance's Buckhall Plantation, rather than to the nearby Riverside Plantation of his uncle, Dr. James Washington Vance. Doctor "Wash" Vance died on October 26, 1868. Note that on the 1868 map his property is annotated, "Estate of Dr. Vance." Readers are left to their own conjecture as to whether or not Brownlee and Ogden would have been among the riders identified by the witness. "James Brownlee" could have been an uncle, James Harvey Brownlee. Not much is known about James Harvey who went to

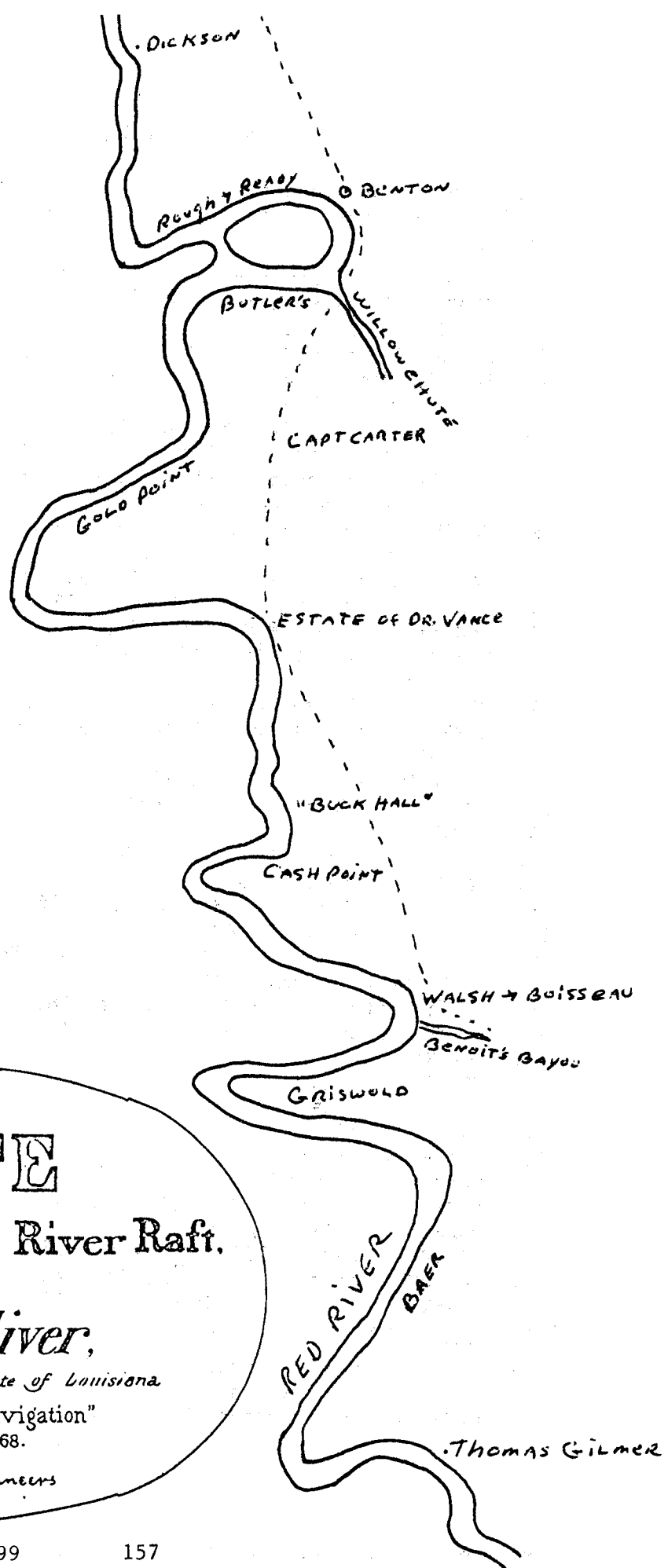


Texas before the Civil War; but, a "J. H. Brownlee" of Waller's Texas Cavalry was paroled in Shreveport on June 17, 1865, and was listed as a resident of Caddo Parish, Louisiana. Also, George L. Woodward, an old member of Caddo Parish's Shreveport Greys, compiled a roster of his company which included "J. H. Brownlee.")

The text of the state legislative committee's report was primarily a reiteration and condemnation of events described by the witnesses. However, its findings reveal the scope and nature of what is characterized as a massacre. The report concluded that its origin was the 27 September incident at Shady Grove, involving "a strange white man." Also, that the massacre lasted for 3 or 4 days, during which time a total of 162 were killed. The committee apparently had access to the U.S. Marshal's report, in reporting that as the rage for blood intensified, "A U.S. Marshal came with some troops from Shreveport, and begged for them to desist, offering to arrest all Colored men against whom there might be charges and turn them over to the parish authorities; but, in the words of this officer, 'the white citizens of Bossier seemed determined to hunt the Colored people in the swamps themselves,' and as the officer 'well knew that they would shoot every Colored man they found with arms.'" The committee ended this segment of their report with the comment: "At the ensuing election the parish of Bossier gave 1 vote for Grant and Colfax out of nearly 2,000 registered Republican voters. Their work was well done."

Although brief articles have appeared on the subject of the "riots," to my knowledge -- with only one exception -- no other good information independent of the aforementioned sources has surfaced. The 1890 Biographical and Historical Memoirs of Northwest Louisiana does name the Columbia County, Arkansas, man as "Gibson," but otherwise betrays its source by describing the initial Shady Grove incident as a robbery. The LSU-S Manry Collection contains relevant correspondence by Bossier Parish historian, Mr. John Ardis Manry. His December 18, 1928, letter was prompted by the recent death of the blind ex-Confederate cavalry officer, John M. Arnold (Mrs. "Gray" Stinson should be Mrs. "Grey" Stinson, formerly Mrs. Mary (Arnold) Vance). "I was sad when I read that Mr. John M. Arnold had died. Hardly a year ago I spent a pleasant Sunday afternoon with him at the residence of his daughter, Mrs. Gray Stinson, several miles below Benton. Seated in rockers before a fireplace, I can see him now, telling about Bossier's own war (the Gibson war), and how it started ..... " It's too bad Mr. Manry or the family did not preserve such conversations. At the time there would have been many others still living who knew of those events--and so it is....

(The map on facing page is made from the copy of a map in my possession.)



# ROUTE

to surround Red River Raft.

*by Contractors*

*Alban & Oliver,*

*under Act of the Legislature of the State of Louisiana*

*"to improve Red River Navigation"*

*Approved Sept 8<sup>th</sup> 1868.*

*Board of State Engineers*

## HUMBLE-ROBINSON AHNENTAFEL

(This chart was submitted by Julie Small, 611 Cummins Way, W. Sacramento, CA 95605. Her mother's side was from Terrebonne Parish, LA, her father's side from LA and AR.)

1. HUMBLE, Julie married to \_\_\_\_\_, SMALL.
2. HUMBLE, Henry Richard b 28 Mar 1925, LA, d 25 Feb 1992, Minden, Webster Par., LA, m to
3. ROBINSON, Anita Marie b 30 Jan 1930, Terrebonne Par., LA.
4. HUMBLE, Henry Clyde b 21 Aug 1884, AR or LA, m to
5. \_\_\_\_\_, Eva Lillian.
6. ROBINSON, Percy Paul b 6 Aug 1902, Terrebonne Par., LA, d 19 Mar 1977, Houma, Terrebonne Par., LA, m 14 Jun 1923 to
7. CHAMPAGNE, Eleonora Philemon b Terrebonne Par., LA, d Dec 1961, Jackson E. Feliciana Par., LA. /b 1902
8. HUMBLE, Timothy Eugene b 16 Dec 1856, Clinton, E. Feliciana Par., LA, d 6 May 1900, m 5 Jun 1882 to
9. LANEY, Laura Harriet b 15 Jul 1856, AR, d 24 May 1911, AR.
12. ROBINSON, John William b 9 Sep 1855, m to
13. BERGERON, Severine b 1 Feb 1863.
14. CHAMPAGNE, Leo Louis b 1860, d 18 Oct 1935, New Orleans, Orleans Par., LA, m to
15. CHAMPAGNE, Helena Eleonora b 29 Nov 1862, d 1913, Houma, Terrebonne Par., LA.
18. LANEY, Felix Walter b 11 Jan 1808, Mecklenburg, NC, d 6 Nov 1889, GA or AR, m 11 Jan 1838 to
19. MATTHEWS, Louisa M., b 1822 NC.
24. ROBINSON, Edward b 1825, England, d 1858, m to
25. BABIN, Marie.
26. BERGERON, Hubert b 25 Jan 1838, m 18 Apr 1860 to
27. MARCEL, Eliza b 1835.
28. CHAMPAGNE, Louis b 1835, m 9 Jul 1860 to
29. TOUPS, Angelina b 1840.
30. CHAMPAGNE, Joseph Floristan m 7 Apr 1860 to
31. THIBODEAUX, Zulema b 1836.
36. LANEY, Titus b 1778 NC, d 29 Sep 1855, m to
37. DOSTER, Rhonda b 1779, d 6 Nov 1842.
48. ROBINSON m to
49. HOLDEN, \_\_\_\_\_.
50. BABIN, Auguste m to
51. BREAU, Marie.
56. CHAMPAGNE, Edward.
60. CHAMPAGNE, Edward (same as 56).
72. LANEY, George b 1748, d 1813, m to
73. WALSH, Mary Lynn b 1750, d 1822.
74. DOSTER, James b 1753, Mecklenburg, NC, m to
75. SPRINGER, Lydia b 1757, Mecklenburg, NC.
144. LANEY, Titus b 1710, Germany, d 1789, SC, m to
145. \_\_\_\_\_, Hannah b Cork Co., Ireland.

(Julie is particularly interested in her father's family (HUMBLE) who lived in Northwestern Louisiana, Southern Arkansas and East Texas. Anyone having information, please contact her at address above.)

\* \* \* \* \*

## AUGUST HANNEMAN(N)

### "PAPA"

(Betty Kintzing, ALTGA Telephone Committee Chairwoman, shared this article on her family.)

As I sit writing a story that Papa told me when I was a small child, I remember Papa, my maternal Grandfather, as a kind and generous gentleman with many good qualities.

Papa was a tall man, 6'3", black curly hair, blue eyes, and he wore a size 13 shoe. His hands were almost twice the size of my hands now.

When Papa was 18 years of age, he, his mother, Wilhelmina, sister, Emily and brother, Frank, came to America from Germany. As I am 72 years of age, I can't recall the name of the city he is from. I'm trying to search for that information. His father, William Hanneman(n), a blacksmith had died in Germany. Papa was 18 years old and would soon be called into the German Army. Somehow he got a letter from Bismarck and as he and his family traveled across Germany to a point of embarkation, he would show his letter when stopped, and he was allowed to continue on his way.

Papa and his family group entered the United States through the Port of New York, which was Long Island in 1883. As they worked their way down to Galveston, Texas, Papa told me he worked breaking horses to earn money to travel on to Texas.

After they reached Galveston, he met and married a first-generation German lady, Johanna Henrietta Anderson (pronounced Andrayson). Her family arrived approximately in 1850. They had two children, Pauline (Lena) and John.

Papa and Hanna moved to Shreveport in 1900. Papa went back to move his dairy cattle up to Shreveport. 1900 was the year of the huge Galveston hurricane. Papa had backed a railroad car onto the island, but before he could load the cattle the hurricane struck.

His mother still lived in their house in Galveston, and Papa was unable to get her to leave the island before the hurricane struck. He was able to get her to climb into the attic and he had cut a hole in the roof and climbed down into a tree close by. His mother was very short and very obese and was afraid to get into the tree. Papa tried to hold onto her thru the roof opening, but when the wind and water came it washed the house away, all of the dairy cattle and unfortunately the force of the hurricane was so strong, he was unable to hold his mother and she slipped out with everything else.

When the water receded, his mother's body was found on the island. I have a book that lists her as a victim. She was buried in Galveston in Lake View Cemetery on 7 February 1901.

Papa returned to Shreveport and worked for the K.C.S. Railroad. I was blessed to have Papa for my grandfather. I did not know Hanna, my grandmother, as she passed away in 1914. Papa was very close to our family. Each Sunday he had dinner with us and always brought my sister, Eddie Rutheen and myself a small 5¢ bag of candy. He caught catfish on Cross Lake and brought them to Mama

to cook.

I have many stories of this area, but time with you and space is limited. A B I G thank you, Papa, for being my grandfather, and a B I G thank you, co-members for reading my story.

Most Sincerely,

Betty Ann Green Kintzing

1. William HANNEMAN(N) m Wilhelmina (died in hurrican in Galveston, TX, 1900. d Germany

1. August HANNEMAN(N) (Papa) m Johanna Henrietta ANDERSON  
B: 2 Feb 1866 Germany B: 1878 Galveston, TX  
D: Jun 1942 (came to Shreveport in 1900) D: 1914 Shreveport, LA  
(came to US in 1850)
2. Emily HANNEMAN(N)
3. Frank HANNEMAN(N)

(Children of August & Johanna Anderson)

1. John HANNEMAN(N)
2. Pauline HANNEMAN(N) (Lena)
3. Anna Johanna Henrietta HANNEMAN(N)  
B: 22 August 1902 Shreveport, LA  
D: 29 Jan 1970 Shreveport, LA  
m 18 Feb 1920 Shreveport, LA. Chapel of 1st Baptist Church by Dr.  
M. E. DODD to Edgar GREEN b 6 Jul 1898, Shreveport, LA, d 17 Mar  
1989, Shreveport, LA.
  1. Edwina Ruth GREEN B 8 Jan 1924, d 14 Apr 1926, Shreveport, LA
  2. Betty Ann GREEN b 29 Jun 1926, Shreveport, LA m to Robert H.  
KINTZING on 5 May 1946, Shreveport, LA. Robert KINTZING b 8 Feb  
1921, Hanover, PA, d 11 Jan 1997, Shreveport, LA.
  3. Eddie Rutheen GREEN  
B 10 Apr 1928, Shreveport, LA, d 10 Apr 1993, Philadelphia, PA,  
Int Andalusia, Covington Co., AL, m 28 Jul 1949 to John William  
TISDALE, Sr., b 25 Jul 1929. (lives in Andalusia, AL.) His  
father, Solomon TISDALE b 1906 (still living), mother, Nannie,  
b 1907 (still living)

I was born in Shreveport, Louisiana, lived on Portland Avenue and attended Queensborough Grade School to the lower seventh grade. My family then moved to Prospect, and I attended High seventh grade at Centenary College Lab School. Then on to Byrd High School and graduated in Grade 11, in 1942. Attended college at Centenary and graduated in 1946.

My children are:

1. William Edgar KINTZING  
B: 11 Jun 1948 Shreveport, LA m to Kathryn REICHART  
Father: Paul REICHART  
. Paul Edgar KINTZING  
B: 2 Dec 1989, Shreveport, LA
2. Cassandra Louise KINTZING m to Leroy BARNIDGE, Jr, on 28 Nov 1970.  
B: 7 Dec 1949, Shreveport, LA B: 12 May 1948 Monroe, LA
  1. Jason BARNIDGE b 30 Jun 1975 Father: Leroy BARNIDGE, Sr. d 1992
  2. Rose-Anne BARNIDGE b 10 Sep 1977 Mother: Rosemary NEWELL  
(Jason b Loring AFB, ME, Rose-Anne b Wright Patterson AFB, OH

3. Robin Ann KINTZING  
 B: 9 Jul 1951 Shreveport, LA (lives in Ellisville, MO)  
 M (1) Michael Steven HINDS (Div)  
 1951 Pollack, LA or England AFB, LA
  1. Catherine Dianne HINDS  
 b 15 Jul 1974 Shreveport, LA  
 m (1) Kerry Dale MORAN who d 1 Jan 1992  
 1. Brittany Justine MORAN b 11 Jul 1991 Shreveport, LA  
 m (2) James Pierce McDONALD b 23 Feb 1973, Natchitoches, LA
  2. Olivia Wednesday McDONALD b 22 Sep 1995, Alexandria, LA
  3. Rose Evelyn McDONALD b 12 Feb 1999, Natchitoches, LA
 Robin m (2) Richard John SPENCE b 23 Feb 1949, PA
  2. Crissa SPENCE b 4 Jan 1987
  3. Casey (M) SPENCE b 24 Nov 1987
  4. Bridget SPENCE b 16 Jul 1988
  5. Brandon Richard SPENCE b 27 Sep 1989
 (Children #2 thru 5 adopted. All children from one family)
4. James Michael KINTZING  
 B: 5 Dec 1955 Shreveport, LA m to Lisa EASTERLING b 6 Sep 1959  
 Alexandria, LA  
 Father: Sidney EASTERLING  
 Mother: Terri
  1. Gregory Kyle KINTZING b 29 Jan 1985 Shreveport, LA
  2. Sidney Nicole KINTZING b 10 Mar 1987 Shreveport, LA

\* \* \* \* \*





## DIGGING YOUR ROOTS, A TO Z

Tracing family history is a fun and challenging task. Beginners can find expert help in the Genealogy Forum (GO ROOTS) and can get a great start by reading the file "Quick Tips for the New Family Researcher From A to Z" written by forum member and experienced genealogist Sandy Clunies. The following is an abbreviated version of Clunies' suggestions. You can download the complete text from the forum's Library 1, "General Information," as file QUICK TIP (8,815 bytes).

- A-Attend a genealogy class.
- B-Begin with what you know and work backward.
- C-Computerize your data collection.
- D-Don't fall for the trap "If it's printed, it must be true."
- E-Evaluate all conflicting evidence.
- F-Find others in the Genealogy Forum who are researching the same family lines.
- G-Guard against quick conclusions.
- H-Hava a general plan.
- I-Involve other family members.
- J-Just names, dates and numbers do not make a family history. Interview your oldest relative.
- K-Keep the first interview brief.
- L-Let everyone in the family know about your family history project.
- M-Make letter writing work for you. Write short, to-the-point letters to public agencies and historical societies for needed information
- N-New researchers should first check the Mormon Family History Library in Salt Lake City, UT, or a regional family history center.
- O-Often small city libraries offer unique resources.
- P-Public records are stored on film at National Archives branches in many U.S. locations.
- Q-Query family associations, libraries and other researchers with your questions.
- R-Records to research: cemetery, census, church, land, military, probate, tax, town, vitals, wills, and on and on.
- S-Sources to research: family records, interviews, primary records, public documents, published books-the list is endless.
- T-Think of your family-history project as a 1,000 piece jigsaw puzzle. Sort out the pieces, study them, and put them together to make a big picture.
- U-Understand that genealogy is wonderfully addicting.
- V-Value your family-history project as a significant contribution in your lifetime to future generations.
- W-When you become discouraged, back up and research another area.

X,Y,Z-X-pect surprises!

\* \* \* \* \*

### TO CALCULATE AGE FROM TOMBSTONE FORMULA 8870

When the age is given on a tombstone or in an obituary, use the Formula 8870 to determine the date of birth or death. Example:

18890506 = Died May 6, 1889  
~~- 710709~~ = Age of 71 years 7 months 9 days (on tombstone)  
 18179797  
~~- 8870~~ = Constant Formula  
 18170927 = Born September 27, 1817

1817th year, 9th month, 27th day

(Source: I. A. Genealogical Society Newsletter, Volume 12, Number 3, dated June, 1991)

\* \* \* \* \*

A large number of the population of Farmerville find employment in the Commercial Solvents Corporation located in Sterlington, Louisiana.

The Ora oil field just north of here brought increased wealth and population to Farmerville for several years, but most of the families connected with Shell Oil Company have moved on to other locations and there is very little activity in the oil field at present.

In hunting and fishing, Union Parish offers a variety of game. In the many streams are a variety of fresh-water fish. The Theo Terzia Game Reserve takes in 50,000 acres of land in Union Parish. The Union Parish Game Reserve, which offers the sportsman 12,000 acres of controlled hunting, is a major asset.

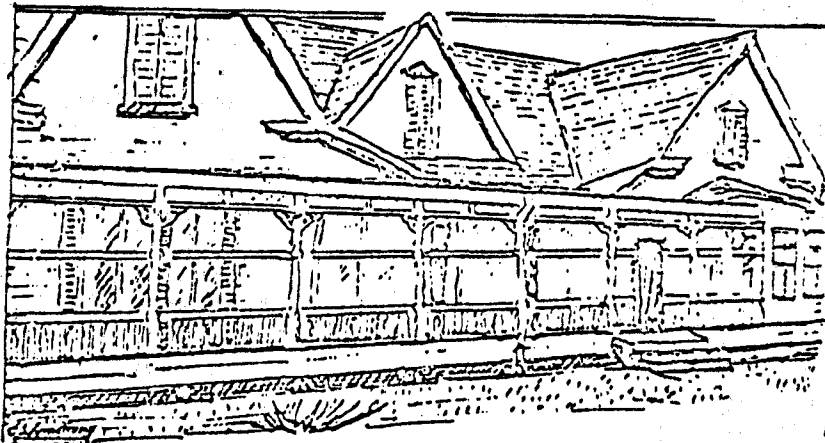
#### "FIRSTS" IN FARMERVILLE AND LATER PROGRESS

In order to appreciate the progress that the town of Farmerville has made in the one hundred twenty-five years of its existence, a few of the "firsts" will be given.

Our forefathers "Borrowed fire" in the early days. There was not a match in the whole world in 1839. They made fire by rubbing flints together rapidly, catching the sparks on a substance known as "punk". This would create a blaze and light-wood kindlings were quickly applied and so they would start a fire. The live coals would be covered at night in order to have fire the next day. If the coals died out or the punk gave out, one of the boys would have to dash off to a neighbor's house early in the morning to borrow a chunk.

During those primitive days in Union Parish there were not many things of any kind that were useful and comforting to mankind as we have today. There were not even steamboats at first, for the local waters were not yet navigable. There were no railroads, trains, no telegraphs, telephones, no sewing machines for all the sewing was done by hand. Cooking was done on the old-fashioned fireplace, with the pots, pans and skillets the only utensils and with the spit hanging from the chimney back. Oxen were often used for drawing wagons and carts. The corn was ground on an old-fashioned watermill.

Farmerville had the first telephone in the South below the Mason-Dixon line. The credit for bringing this distinction to Farmerville was to Colonel Daniel Stein, pioneer merchant of these parts.



A proud symbol of Farmerville's past is the O. Baughman home on Bayou Street. It was here that Col. Daniel Stein, pioneer merchant, who built the

house, installed one of the first telephones in the South. While on a stock-buying trip to New York, he had seen the newly-invented telephone demonstrated, bought stock in the company and brought three of the instruments home with him.



The "Buck Horn" store, located at Stein's Bluff on Corney Bayou (Bernice Highway), was owned and operated by Daniel Stein in the 1870's. It was here that he installed one of the first telephones in the South.

The first automobile in Farmerville was purchased in 1922 for \$1,050 by Dr. J. G. Taylor. The same day another citizen, Dr. R. L. Love, bought a car.

Farmerville and Enterprise had the first post offices to be established in the parish. Farmerville had mail service as early as May 2, 1840. James H. Sealy was the first postmaster. Farmerville now has a second-class post office, with Trellis Black the present postmaster. There have been four locations up through the present one.

The first traffic law of the town were passed in January 1917. Ordinance No. 46 regulated the speed and parking rules governing the automobiles. There are traffic lights at all the busy intersections. On March 1, 1954, parking meters were installed on the main streets of Farmerville. Added revenue brought the town from these meters, from July 1958 to June 1959, amounted to \$4,215, an average of \$100 a week.

In 1922, ordinances were passed that authorized the letting of contract and franchise for a water system in Farmerville. On November 7, 1922, J. R. Littlepage was contracted to pipe water from Whiteman-Decker Mill, located on the Marion Highway, to the school and then on into town. This was the first water system the town had. Later a well was located in town for the water supply. Today, Farmerville has an adequate supply of water with a water tank located at either end of town, another serving the new sub-division near Lake D'Arbonne Dam, and a third under construction at present, an up-to-date fire department and a sewerage system.

A new franchise governing the electric light conditions was passed on February 21, 1923. The franchise was granted to Selig-Davis Power Company. At an earlier date, June 2, 1914, the town paid D. O. Ramsey and Paul Digby to put

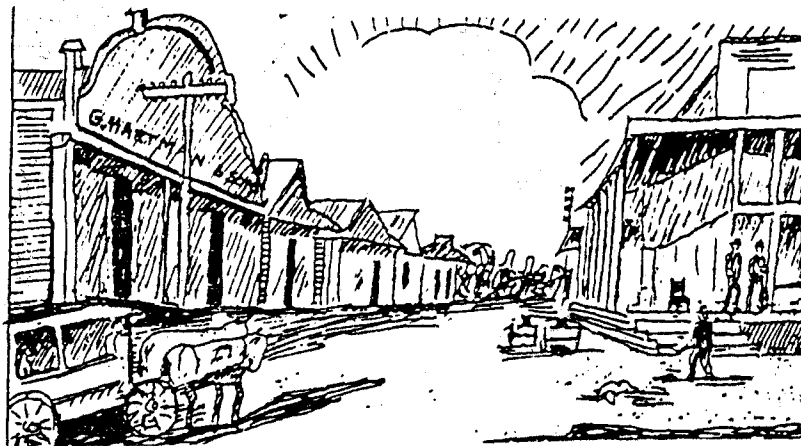
lights in town. They were allowed 40 watt bulbs for the street lights. Gas was put in town around 1927. Talph Harper first came to Farmerville at that time to help in the installation.

The Parish Health Unit was formed in 1936. It is operated by the State Board of Health with the Police Jury and the school board assisting. Dr. J. G. Norris was appointed as its first director and served until June 15, 1938, when he resigned to enter the private practice of medicine. A new building to house the health unit was erected in 1954. During the past years improvement has been made in sanitary conditions throughout the parish in both homes and schools.

Some of the doctors who are remembered back through the century are Doctors Burch, Dillard, Barnes, Jameson, Love, Evans, Taylor and Francis. Today Farmerville has two clinics in operation-Norris-Booth Clinic and Wadlington's Clinic. Until three years ago there was also the Farmerville Clinic and Hospital with Dr. J. T. Henry.

The first marriage license was issued July 24, 1839 to Cyrus Rounsvall and Mahaly Smith. Mr. Rounsvall signed his name to it but Miss Smith had to make her mark "X". The witnesses to this license were Columbas Dutton and Benjamin Sluyter.

A few of the early merchants and businesses were Carson and Baylis, Henry Brown, Carr Lee and Co., Stein, Marx Brothers, W. J. Turnage Sr., Gus Hartman and Sanders Variety Store. The stockholders for the Farmerville Mercantile Company, chartered in 1913, were M. J. Pearson, J. D. Baughman, W. J. Turnage, Sr., and J. W. Stansil. Farris Palace, owned and operated by Mrs. J. W. Farris, opened in February 1909.



Life was leisurely along North Main about 1900.  
Hartman's Store is in the foreground at left.

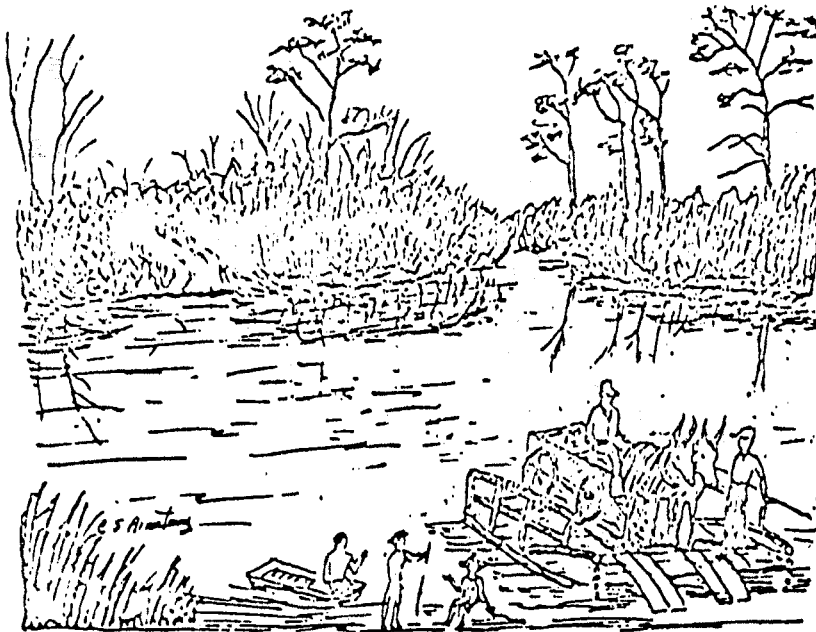
Since the history of Farmerville is almost a history of Union Parish as well, an unusual fact is that four governors of two states were natives of Union Parish. William Wright Heard, Governor of Louisiana, 1900-1904, and Ruffin G. Pleasant, Governor of Louisiana, 1916-1920, were both born in or near Shiloh and attended school at Farmerville.

George W. Donaghey, Governor of Arkansas, 1908-1912, was born near Oakland and Tom J. Terral, Governor of Arkansas, 1924-1926, was born at Holmesville.

The third Union Parish courthouse was constructed in 1904 and served this area until 1959, when it was demolished to be replaced by the present structure.

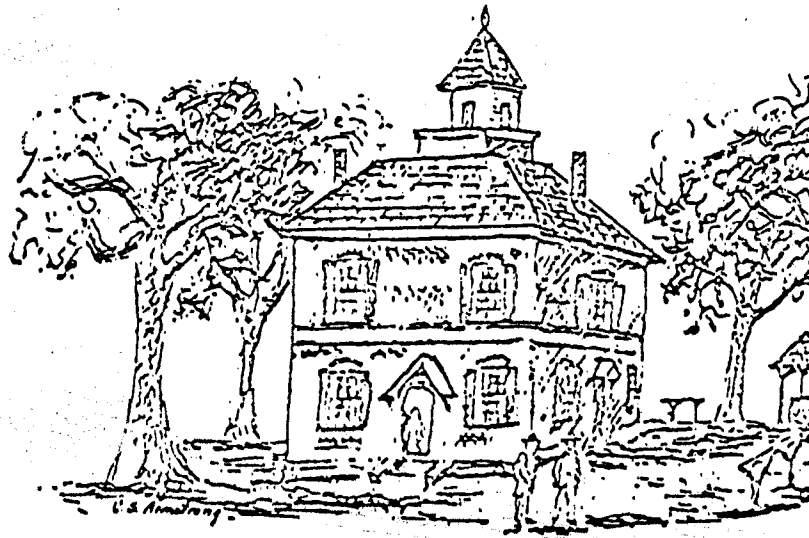


(Your editor begs forgiveness for this portion being out of sequence in this article.)



Crossing the ferry used to be an everyday activity for many in order to come to town. This scene is at Fork Ferry, where the Corney Bayou ran into the D'Arbonne.

The courthouse is described as being "36 feet by 28 feet, two stories with a third story in the attic under the cypress shingled 'square roof'. There were four foors, one on each side of the building, thirteen windows with 'Venetian Blinds' or shutters....a steeple which added a touch of dignity to the structure." The first floor was used for a courtroom and the other floors as offices.



As no picture was available, this is an artist's conception of the first parish courthouse, which was completed in 1842.

The parish was growing and the succeeding minutes of the police jury show that the progress never lagged. More attention was given to education, more roads, better organization of government as time went on.

A month after the courthouse square was plotted in the center of the town, eighty-two lots were sold to citizens of the parish.

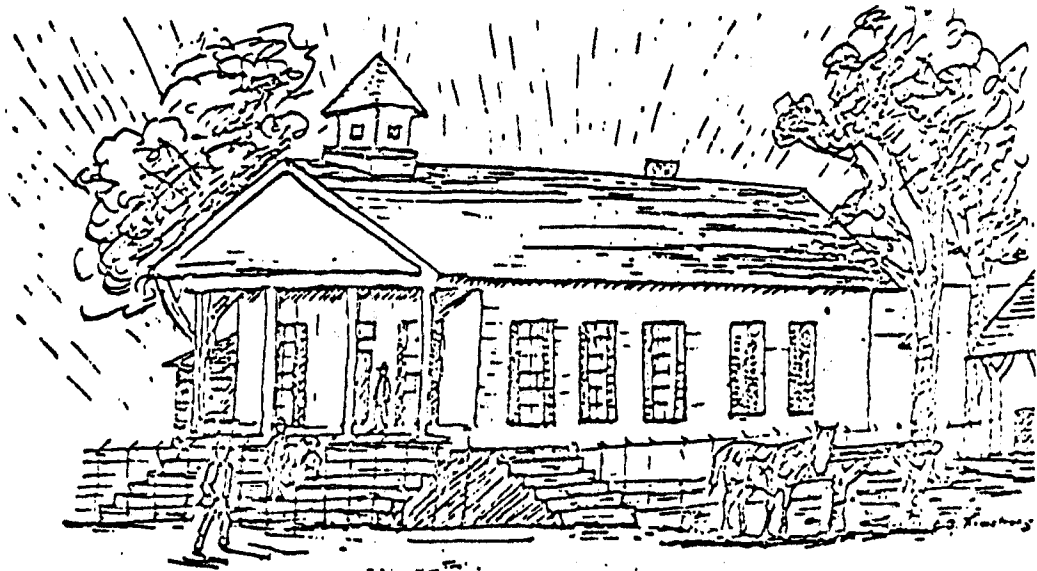
An ordinance passed September 27, 1841, appropriated one-half an acre of land to the parish seat as a burying ground. Additional land has been purchased since that time.

#### DEVELOPMENT OF FARMERVILLE

Although Farmerville was organized and plotted in 1839, it wasn't until the general assembly of 1842 that the town was granted a charter and incorporated. It operated under this charter with several amendments until the charter of 1870, under which the town operates today. The charter of 1842 was signed by Wm. C. C. Clairborne, Speaker of the House of Representatives, Felix Garcia, President of the Senate, and A. B. Roman, Governor of Louisiana. The charter of 1870 was signed by Mortimer Carr, Speaker of the House, Oscar J. Dunn, Lt. Governor and President of the Senate and approved March 16, 1870 by H. C. War-mouth, Governor of Louisiana.

With the continual creation of roads, Farmerville began to be settled. Men bought lots, built homes, opened stores and businesses. Farmerville began to emerge as a town.





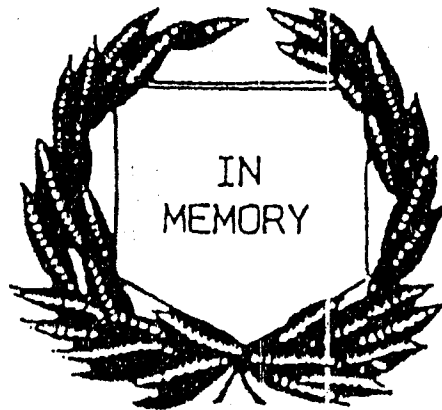
The second Union Parish Courthouse, constructed in 1870 following closely after the ravages of the Civil War, was less pretensions than the first. It served this area until 1904.

The spring of 1883 marked the high point of Farmerville's mercantile importance. Then two events occurred which disrupted the pleasant situation. In March, fire destroyed Stein's Mercantile Store. A few weeks later a tornado toppled the remaining walls of the building down upon Glasson's saloon next door, completely demolishing the building and killing the owner, H. G. Glasson, besides injuring three other occupants.

#### STEAMBOAT DAYS

The completion of the railroad from Vicksburg to Ruston the same year spelled the doom of Farmerville as a shipping point. The region had been served by the steamboat all during the post war period.

\*\*\*\*\*



Mary Jo O'Reilly  
1919-1999

## TAUZIN-DIXON AHNENTAFEL

This impressive pedigree was submitted by Nancy West, 546 Sage Dr., Bossier City, LA 71112. Nancy is not a member of ALTGA, but is sharing her information with us. She is presently trying to become a member of UDC through the Grappe family.

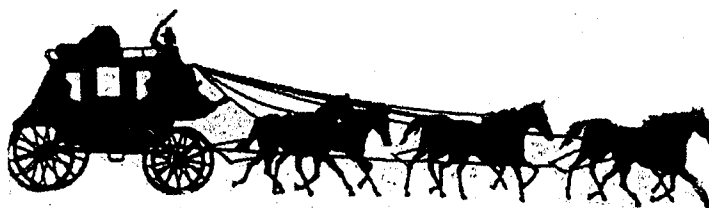
1. TAUZIN, Jarrod Michael b 6 Dec 1997, Bossier City, Bossier Par., LA.
2. TAUZIN, Steven Lee b 11 May 1975, Shreveport, Caddo Parish, LA.
3. DIXON, April b April 1975 (?)
4. TAUZIN, John Stevens b 14 Oct 1953, Shreveport, Caddo Par., LA, m 1972  
Shreveport, Caddo Par., LA to (Div)
5. WEST, Nancy Elizabeth b 6 Oct 1951, Shreveport, LA, Caddo Par., LA.
10. WEST, Luther George b 15 May 1919, Many, Sabine Par., LA, d 19 Aug 1993  
Bossier City, LA, Int. Forest Park Cemetery, Shreveport, LA m 2 Oct  
1947, Bossier City, LA to
11. RINGGOLD, Marion Elizabeth b 18 Jul 1926, New Orleans, Orleans Par., LA,  
d 19 Aug 1993, Bossier City, LA, Int Forest Park Cem., Shreveport, LA.
20. WEST, Benjamin Herbert b 12 Feb 1884, Many, Sabine Par., LA, d 28 Oct 1957  
Shreveport, LA m to
21. GRAPPE, Bessie Belle b 17 Jul 1895, Spanish Lake, Natchitoches Par., LA,  
d 9 Mar 1990, Shreveport, LA.
40. WEST, Nathan Plympton b 1 Jul 1851, Brukeville, Sabine Co., TX, d 9 Sep  
1938, Many, Sabine Par., LA, m 16 Nov 1875 to
41. DAVIS, Susie Charlotte b 25 May 1858, Sabine Co., TX, d 4 Jul 1921, Many,  
Sabine Par., LA.
42. GRAPPE, Jules Edward b Dec 1866, Spanish Lake, Natchitoches Par., LA, m to
43. NIETO/NIETTE, Paula b May 1874, Spanish Lake, Natchitoches Par., LA.
80. WEST, Dr. Nathan Plympton b 25 Apr 1818, Boston, Suffolk Co., MA, d 6 Mar  
1883, Milam, Sabine Co., TX, m 3 Mar 1840, Rochester, Sangamon Co., IL
81. EVANS, Amanda Nellie b 20 Sep 1824, Norfolk, Norfolk Co., VA, d 20 Nov  
1894, Choice, Shelby Co., TX.
84. GRAPPE, Jules Albert b 1841 (?)
160. WEST, Benjamin b 26 Feb 1776, Needham, Norfolk Co., MA, d 4 Apr 1829,  
Charleston, Sullivan Co., NH, m 24 Apr 1811, Boston, Suffolk Co., MA to
161. \_\_\_\_\_, Charity b 19 Dec 1782, Charleston, Sullivan Co., NH, d 24 May 1836,  
Charleston, NH.
162. EVANS, Samuel Hiram b 14 Nov 1779, VA, d 13 Sep 1835, VA m to
163. SOMMERSALL, Mary Elizabeth b 17 Feb 1783, VA, d 30 Oct 1864, Newton Co.,  
TX.
320. WEST, Rev. Samuel b 18 Nov 1738, Martha's Vineyard, MA, d 10 Apr, 1808,  
N. Rochester, Strafford Co., NH, m 23 Feb 1769 Medfield, Norfolk Co.,  
MA to
321. PLYMPTON, Priscilla b 23 Sep 1738, Medford, MA, d 19 May 1821, Boston, MA.
322. WEST, Timothy b ca 1750, MA, d 24 Feb 1833, Charleston, Sullivan Co., NH,  
m 27 Aug 1768, Rochester, Plymouth Co., MA to
323. DEXTER, Lois b 6 Dec 1748, Rochester, MA, d 19 Nov 1831, Charleston, Sulli-  
van Co., NH.
326. SOMMERSALL, John William b ca 1753, England, m to
327. MORGAN, Mary b ca 1763, VA, d 1840, VA.
640. WEST, Rev. Thomas b 26 Aug 1708, Martha's Vineyard, Dukes Co., MA, d 14  
Jul 1790, N. Rochester, MA.
641. PRESBURY, Drusilla b 1708, Martha's Vineyard, Dukes Co., MA, d 14 Mar  
1763, N. Rochester, MA.

642. PLIMPTON, Nathan b 3 Jan 1710, Medfield, MA, d 1781, m 23 Apr 1747, Medfield, MA to
643. CLARKE, Abigail b 15 Feb 1721/2, Medfield, MA, d 1813.
644. WEST, Rev. Thomas (same as #640).
645. PRESBURY, Drusilla (same as #641).
646. DEXTER, Ephraim b 27 May 1711, Rochester, MA, d 4 Nov 1774, Rochester, MA, m 31 Jul 1735, Rochester, MA to
647. CLARK, Martha b ca 1714, d bef 1754, Rochester, MA.
652. SOMMERSALL, Sir John B England, m to
653. \_\_\_\_\_, Lady Jane b England.
1280. WEST, Abner b 9 Jun 1683, MA, d Mar 1756, MA m 17 Nov 1707 to
1281. LOOK (COTTLE), Jane b 24 Dec 1680, Martha's Vineyard, Dukes Co., MA, d ca 1765, Rochester, MA.
1282. PRESBURY, Stephen b ca 1666, Martha's Vineyard, MA, d 17 May 1730, Martha's Vineyard, MA, m ca 1693 Cape Cod, MA to
1283. SKIFF, Deborah b 14 Jul 1668, d 11 Mar 1743.
1284. PLIMPTON, Joseph b 18 Mar 1677, Medfield, MA, d 31 Oct 1739, m 1699 to
1285. PARTRIDGE, Priscilla b 3 Sep 1672, Medfield, MA, d 1738.
1286. CLARKE, Seth b 1 May 1688, m 3 Dec 1713, Medfield, MA to
1287. METCALF, Abigail b 1694, d 1788.
1292. DEXTER, Benjamin b 16 Feb 1670, Barnstable, Barnstable Co., MA, d 1732, Rochester, MA, m 17 Jul 1695, Rochester, MA to
1293. ARNOLD, Sarah b ca 1672, Rochester, MA.
1294. CLARK, Thomas m to
1295. ROGERS, Alice b 26 Mar 1685, Scituate, Plymouth Co., MA.
2560. WEST, Dr. Thomas b 1646, Duxbury, Plymouth Co., MA, d 6 Sep 1706, Martha's Vineyard, MA, m to
2561. \_\_\_\_\_, Elizabeth b ca 1653, Martha's Vineyard, MA, d 16 Feb 1728, Martha's Vineyard, MA.
2562. LOOK, Thomas b 6 Jun 1646, Lynn, Essex Co., MA d ca 1725, m 1670 to
2563. BUNKER, Elizabeth b 1646.
2564. PRESBURY, John b ca 1640, Salisbury, Essex Co., MA, d 3 Nov 1684, Saco, York Co., ME, m to
2565. BESSE(Y), Dorcas.
2566. SKIFF, Stephen b 14 Apr 1641, Sandwich, Barnstable Co., MA, d 19 Jun 1710, m to
2567. SNOW, Lydia b 1640, d 17 Mar 1713.
2568. PLYMPTON, Sr., Joseph b 7 Oct 1653, d 22 Jun 1702, m 3 Nov 1675 to
2569. MORSE, Mary d 25 Dec 1717.
2570. PARTRIDGE, William b 1622, England, d 19 Sep 1692, m to
2571. COLBURN, Sarah b 5 Feb 1640, d 1715, USA.
2572. CLARK, Benjamin b ca 9 Dec 1644, d 1 Dec 1724, USA, m 19 Nov 1665, Medfield, MA to
2573. MORSE, Dorcas b 24 Jun 1645, Dedham, Norfolk Co., MA, d 14 Jul 1725.
2574. METCALF, Joseph b 22 Nov 1658, Medfield, MA, d 1741, m 1685 to
2575. BOWERS, Sarah b 1663, d 1727, Medfield, MA.
2584. DEXTER, William b England, d 1694, Rochester, MA m Jul 1653 to
2585. VINCENT, Sarah b ca 1633, England.
2586. ARNOLD, Samuel b 9 May 1649, Yarmouth, Barnstable Co., MA, d 1717, Rochester, MA m to
2587. HOLMES (?), Sarah d ca 1720, Rochester, MA.
2588. CLARK, Thomas b ca 1650, m 1676 to
2589. CURTIS, Martha b ca 1654.
5120. WEST, Francis b ca 1620, Salisbury, Wiltshire, England, d 2 Jan 1692, m 27 Feb 1639, Duxbury, Dukes Co., MA to

- 5121. REEVES, Margery Margaret b ca 1620.
- 5124. LOOK, Thomas b ca 1622, Scotland, m to
- 5125. WALTER, Sarah Miller
- 5126. BUNKER, George b England, d 26 May 1658, m to
- 5127. GODFREY, Jane d Oct 1662.
- 5128. PRESBURY, John d ca 1648, m to
- 5129. \_\_\_\_\_, Catherine.
- 5130. BESSE(Y), Anthony b 1609, London, Essex Co., England, d May 1657, m to
- 5131. \_\_\_\_\_, Jane.
- 5132. SKIFF, James b ca 1610, Nantucket, Nantucket Co., MA, m to
- 5133. REEVES, Mary d 1673.
- 5134. SNOW, Anthony d Aug 1692, m 1639 to
- 5135. WARREN, Abigail.
- 5136. PLIMPTON, John b ca 1620, England, d 1677, Chambly (?), MA, d 1677,  
Chambly, MA, m 1644, Roxbury, Suffolk Co., MA to
- 5137. DAMON, Jane b 1626, d 1702.
- 5138. MORSE, Samuel d 1691, Medfield, MA, m to
- 5139. BULLEN, Mary d 1691.
- 5140. PARTRIDGE, Capt. John b England, d England, m to
- 5141. HOGG/HOAG, Jane b England, d England.
- 5142. COLBURN, Nathaniel d 1690, m 1639 to
- 5143. CLARK, Priscilla.
- 5144. CLARK, Joseph b 1597, d 1684, m to
- 5145. PEPPER, Alice/Alse d Mar 1710.
- 5146. MORSE, Joseph b 1597, d 1648, m 1638 to
- 5147. PHILLIPS, Hannah d 1676 USA.
- 5148. METCALF, John b 15 Sep 1627, d Nov 1675, m to
- 5149. CHICKERING, Mary d Oct 1698.
- 5150. BOWERS, John d 1676, m to
- 5151. \_\_\_\_\_ d 1694.
- 5168. DEXTER, d 1677.
- 5170. VINCENT, John b ca 1606, England.
- 5172. ARNOLD, Rev. Samuel d 1693, m to
- 5173. \_\_\_\_\_, Elizabeth d 1705.
- 5174. HOLMES, William b 1592, d 1678, m to
- 5175. MADDEN(?), Elizabeth.
- 10240. WEST, Capt. Francis b 28 Oct 1586, England, d 1634, m to
- 10241. BLAYNEY, Margaret
- 10252. BUNKER, William.
- 10270. WARREN, Richard b England, d 1628, m to (MAYFLOWER)
- 10271. \_\_\_\_\_, Elizabeth b ca 1583, England, d 10 Feb 1673.
- 10276. MORSE, Samuel b 12 Jun 1576, Boxted, Essex Co., England, d 5 Dec 1654,  
Medfield, MA, m 29 Jun 1602 to
- 10277. JASPER, Elizabeth b 30 Jan 1579, Redgrave, Suffolk Co., England, d  
20 Jun 1655, Medfield, MA.
- 10286. CLARK, Rowland d 12 Feb 1638, Dedham, Norfolk Co., m to
- 10287. HOBART, Mary d 22 Mar 1642, Dedham, MA.
- 10288. CLARK, Rowland (same as #10286).
- 10289. HOBART, Mary (same as #10287).
- 10290. PEPPER, Robert b England, m to
- 10291. LEAKE, Elizabeth b England.
- 10292. MORSE, Samuel (same as #10276).
- 10293. JASPER, Elizabeth (same as #10277).
- 10294. PHILLIPS, Christopher m to

10295. SALTER, Elizabeth.  
 10296. METCALF, Michael b 1586, Tatterford, NC, England, d 27 Dec 1664, Dedham, MA, m 13 Oct 1616, Waynham, Norfolk Co., England to  
 10297. ELLWYN, Sarah b 17 Jun 1593, Heighman, Norfolk Co., England, d 30 Nov 1644, Dedham, MA.  
 20480. WEST, 2nd Baron Thomas b Feb 1577, England, d 7 Jun 1618, at sea, m to  
 20481. KNOLLYS, Anne.  
 20552. MORSE, Rev. Thomas d 10 Nov 1596, Foxearth, Essex Co., MA, m 26 May 1573  
 20553. KING, Margaret d 28 Jul 1585, Hinderclay, Essex Co., England.  
 20554. JASPER, Lancelot, b ca 1550, Redgrave, Suffolk Co., England, d 2 Feb 1616, Redgrave, England, m to  
 20555. \_\_\_\_\_, Rose d 3 Sep 1625, Redgrave, Suffolk Co., England.  
 20590. SALTER, George m to  
 20591. \_\_\_\_\_, Elizabeth.  
 20592. METCALF, Rev. Leonard d ca 1616, m to  
 20593. \_\_\_\_\_, Amy.  
 20594. ELLWYN, Thomas m to  
 20595. BENSLYE, Elizabeth.  
 40960. WEST, Baron William b Sussex, England, d 30 Dec 1595, m to  
 40961. STRANGE, Elizabeth.  
 41104. MORSE, Thomas b ca 1520, Stoke b Nyland, SC, England, d 17 Feb 1566, Stoke b Nyland, England.  
 41105. \_\_\_\_\_, Agnes b England, d 5 Apr 1574, Stoke b Nyland, England.  
 41184. \_\_\_\_\_, Brian of Bear Park b England, d England, m to  
 41185. \_\_\_\_\_, Johanna of Houghton.  
 81920. WEST, Sir George b ca 1510, Sussex, England, d 1538.  
 82208. MORSE, Robert b Stoke b Nyland, England, d ca Oct 1551, England, m to  
 82209. \_\_\_\_\_, Agnes b England, d ca 1579, Stoke b Nyland, England.  
 82368. METCALF, James m to  
 82367. \_\_\_\_\_ Gelsone of Ireby.  
 163840. WEST, Lord Thomas b ca 1457, England, d 1525, m to  
 163841. COPLEY, Eleanor.  
 164738. METCALF, John m to  
 164739. \_\_\_\_\_, Alice of Ireby.  
 327680. WEST, Lord Richard b ca 1430, England, d 10 Mar 1475, England, m to  
 327681. HUNGERFORD, Catherine.  
 655360. WEST, Lord Reginald b ca 1413, England, d 27 Aug 1451, m ca 1434 to  
 655361. PERCY, Eleanor b England, d England.  
 1310720. WEST, Sir Thomas b England, d ca 1413, England, m to  
 1310721. de la WARR, Joan b England, d England.  
 2621440. WEST, Sir Thomas b England, d England, m to  
 2621441. FITZ-HERBERT, Alice b Worcester Co., England, d England.  
 3242880. WEST, Sir Thomas b ca 1300, Devon Co., England, d 1344, England, m to  
 3242881. CANTELUPE, Eleanor/Alianore b Devon Co., England, d England.

\* \* \* \* \*



## GOODWIN-WILSON AHNENTAFEL

This chart was submitted by Heather Goodwin, 310 Ellerbe Ridge Dr., Shreveport, LA 71106. Heather is not a member of ALTGA, but has graciously shared her information with us and did a very good job of researching her family.

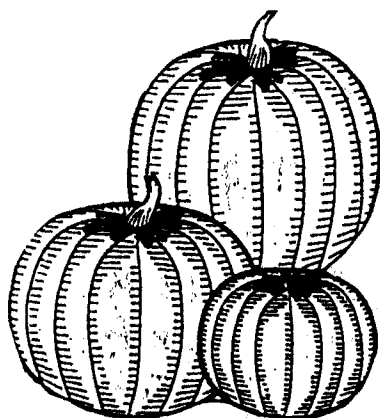
1. GOODWIN, Jacob Bradley b 10 Dec 1991, Shreveport, Caddo Par., LA.
2. GOODWIN, Bradley Lane b 26 Nov 1959, Waco, McLennan Co., TX, m 21 Aug 1982  
Bossier City, Bossier Par., LA to
3. WILSON, Heather Christine b 6 Oct 1958, Shreveport, LA.
4. GOODWIN, Johnny B. b 13 Jan 1931, Beebe, White Co., AR, m to
5. HOLSTEAD, Betty Jean.
6. WILSON, William Walter b 21 Nov 1929, Bossier City, LA, d 5 Oct 1996,  
Bossier City, LA, m 20 Feb 1954 to
7. HACKETT, Donna June b 25 Aug 1926, Ludington, Mason Co., MI, d Jun 1991,  
Bossier City, LA.
8. GOODWIN, Floyd Everett b 29 Mar 1903, Lynn, Lawrence Co., AR, m 6 Aug 1924
9. SCROGGS, Pearlle Estelle b 6 Dec 1906, Butlerville, Lonoke Co., AR.
10. HOLSTEAD, Robert Lee m to
11. HENRY, Katie.
12. WILSON, William Henry b 4 Jan 1903, Mineola, Wood Co., TX, d 13 Oct 1945,  
Bossier City, LA, m 30 Aug 1925, Bossier City, LA to
13. OWSLEY, Vivian Elizabeth b 3 May 1906/9, Bossier City, LA, d 7 Jan 1971,  
Bossier City, LA.
14. HACKETT, Frank Benjamin b 7 Sep 1901, d 28 Nov 1988, Ludington, Mason Co.,  
MI, Int. Lakeview Cemetery, m to
15. HANSEN, Anna Christina.
16. GOODWIN, James Luther b 31 Jan 1873, Bessemer, Jefferson Co., AL, d 26 Jan  
1957, m 5 Jan 1896, Lynn, AR to
17. LAFERNEY, Lena Leota b 9 Oct 1880, Kennett, Dunklin Co., MO, d 2 Jun 1965,  
Beebe, White Co., AR.
18. SCROGGS, Chalmers Amos b 19 Sep 1880, d 6 Aug 1966, m 12 Aug 1900 to
19. YOUNG, Annie b 12 May 1887, d 22 Mar 1907.
24. WILSON, John William b 3 Aug 1881, d 17 Nov 1930, m to
25. O'DONNELL, Hurteline Melinda b 9 Oct 1884, d 20 Jun 1961.
26. OWSLEY, Walter Jefferson b 9 Dec 1865, d 19 Sep 1945, m 23 Nov 1904 to
27. THOMAS, Adelaide Gray b 31 Oct 1880, Paynesville, AL, d 25 Jun 1971, Bossier  
City, LA
28. HACKERT, Frank (name changed to HACKETT after 1910), d 1941, m to
29. CARTER, Estella.
32. GOODWIN, James b 27 May 1845, AL, d 14 Mar 1914, McCrory, Woodruff Co., AR,  
m 21 Mar 1870 to
33. CROTWELL, Margaret b 15 May 1854, AL, d 23 Dec 1912.
34. LAFERNEY, Mount Etna b 22 Nov 1857, Dunklin Co., MO, d 1890, Lynn, Lawrence  
Co., AR, m 22 Dec 1878, Kennett, MO to
35. HECTOR, Martha Ann b 28 Oct 1861, Manila, Mississippi Co., AR, d 31 Oct  
1940, Beebe, White Co., AR.
36. SCROGGS, Amos b 29 Jan 1844, m to
37. BOGER, Margaret.
52. OWSLEY, \_\_\_\_\_, m to
53. \_\_\_\_\_, Missouri Anna.
54. THOMAS, John Marshall b 1 Apr 1837, Kemper Co., MS, d 25 Sep 1917, Toomsaba,  
Lauderdale Co., MS, m 15 Aug 1868, Paynesville, AL to
55. BURTON, Delila Jane Collins b 2 Oct 1848, Sumter Co., AL, d 5 Dec 1933.



56. HACKERT, Charles (Immigrated to America with his mother ca 1839/40) b 1830  
Prise, Germany, d 1930, Lincoln, Alcona Co., Amber Twp, MI, m 30 Dec  
1848, Berrien Springs, Berrien Co., MI to
57. WILLIAMS, Sarah Ann b 1832, OH, d 1908.
58. CARTER, William b VA, m to
59. \_\_\_\_\_, Selinda b OH.
64. GOODWIN, Mark b 1807, SC, m 21 Jan 1830, Jefferson Co., AL to
65. CALDWELL, Lydia b 1810, AL.
66. CROTWELL, Jacob b 1817, SC, m to
67. \_\_\_\_\_, Elizabeth b 1820, SC.
68. LAFERNEY, Stephen Decatur b 1814, New Madrid, New Madrid Co., MO, m to
69. TACKETT, Iris, b 1813, MO.
70. HECTOR, William b 1827, AL, m to
71. COWESLE/COWISLE, Louiser b 5 Dec 1829, AL.
72. SCROGGS, Alexander b 21 Feb 1807, d 21 Mar 1856, m 4 Dec 1838 to
73. HOLTSHAUSER, Mary Marie Barbara.
108. THOMAS, W. G. m to
109. \_\_\_\_\_, Rosanna.
110. BURTON, Drury Langley b 10 Nov 1820, d 12 Jan 1850 (Yellow Fever), m 29  
Oct 1847 to
111. OLIVER, Ann Elizabeth b 13 Jul 1824, d 11 Nov 1901.
112. HACKERT, \_\_\_\_\_ d 1838, Prise, Germany, m to
113. \_\_\_\_\_, d USA.
114. WILLIAMS, \_\_\_\_\_ b PA, m to
115. \_\_\_\_\_, b France.
116. CARTER, \_\_\_\_\_ b VA, m to
117. \_\_\_\_\_, b VA.
118. \_\_\_\_\_, b VT, m to
119. \_\_\_\_\_, b OH.
128. GOODWIN, Mark b 1781, SC, m to
129. \_\_\_\_\_, Tabitha b 1785, SC.
130. CALDWELL, Absalomb 1784, AL/TN (?), m to
131. \_\_\_\_\_, Hannah b 1788, AL.
132. CROTWELL, George b 1791, SC, d 1832/37, AL, m to
133. \_\_\_\_\_, Barbary b 1795, SC.
136. LAFERNEY, \_\_\_\_\_ b 1788, New Madrid, New Madrid Co., MO, m to
137. \_\_\_\_\_, Mary b 1792, New Madrid, MO.
144. SCROGGS, James b ca 1770, Rowan Co., NC, d bef 1829, Troutman, Iredell Co.,  
NC, m ca 1798 to
145. McBRIDE, Esther b 30 Mar 1775, Salisbury, Iredell Co, NC, d 7 Jun 1859.
220. BURTON, Thomas m 30 Dec 1802, Caswell Co., NC, m to
221. BRANDON, Jane.
288. SCROGGS, John b 1723, Scotland, m ca 1762 to
289. McDUFF, Eleanor (her second marriage. Her first marriage to William CARSON  
and is the grandmother of Christopher (Kit) CARSON.)
290. McBRIDE, William b ca 1751, Glasgow, Scotland, d 18 Apr 1822, Iredell Co.,  
NC, m ca 1771, Salisbury, Rowan Co., NC to
291. CRAWFORD, Margaret b 14 Jun 1752, Glasgow, Scotland, d Putnam Co., IN.
440. BURTON, Allen b 1755, Cumberland Co., VA, d 1841, m 27 Feb 1775 to
441. \_\_\_\_\_, Mary.
576. SCROGGS II, Sir William b 1652, d 1695, m to
577. BLUCK, Anna.
578. McDUFF, \_\_\_\_\_ b ca 1700, m to
579. GORDON, Eleanor b ca 1702.

580. McBRIDE, John b ca 1725, Glasgow, Scotland, m to  
 581. \_\_\_\_\_, Esther b 1729.  
 582. CRAWFORD, James b 1726, Glasgow, Scotland, m to  
 583. \_\_\_\_\_, Sarah b 1730, Glasbow, Scotland.  
 880. BURTON, Capt. John b 1730, d 1785, m to  
 881. MERRYMAN, Agnes.  
 882. BURTON, William Allen m to  
 883. WALTHALL, Mary.  
 1152. SCROGGS, Sir William b 1623, d 1683 m to  
 1153. FULTZPLACE, Ann.  
 1760. BURTON, Nowell b 1690, d 1766, m to  
 1761. ALLEN, Judith.  
 2304. MURRAY, Sir John.  
 3520. BURTON, Robert b 1660, d 1724, m to  
 3521. NOWELL, Mary.  
 7040. BURTON, John (came to America from Longer Hall, Uffington, NR, Shrewsbury, Shropshire, England) b 1632, d ca 1689, USA.  
 14080. BURTON, Edward b ca 1565 or 1574, Shropshire, England, d 1642, m 1601 to  
 14081. NEWTON, Elizabeth b 1579, Heighley, Shropshire, England.  
 28160. BURTON, Thomas b 1542, d 1619, m to  
 28161. BEYST, Catherine/Katherine b 1545, Atcham, Shropshire, England.  
 28162. NEWTON, Francis b 1553 (?).  
 56320. BURTON, Edward b 1510/1525, d 1558/88, m ca 1541 to  
 56321. MADOCKS, Anne b 1527, Went Cotton, Shropshire, England.  
 56322. BEYST, William b ca 1500.  
 112640. BURTON, John b ca 1473, Longhorlee, Shropshire, England, d 22 Oct 1543, m to  
 112641. POYNER, Elizabeth b ca 1489, Beslow, Shropshire, England.  
 112642. MADOCKS, Nicholas.  
 225280. BURTON, Sir Edward b ca 1442, Longhorlee, Shropshire, England, d 23 Apr 1524, m ca 1472 to  
 225281. GRIFFIN, Joyce (?) b 1446.  
 225282. POYNER, Thomas b 1463, m to  
 224283. EYTON, Lucia b 1467.  
 450560. BURTON, Sir Robert b ca 1419, m to  
 450561. STAPLETON, Christian b ca 1523, Stapleton, Devonshire, England.  
 901120. BURTON, Sir Edward b ca 1393, m ca 1428 to (made Knight Baronet by Edward IV in 1461)  
 901121. \_\_\_\_\_ b ca 1395.

\* \* \* \* \*



## LOUISIANA TROOPS-TRANS-MISSISSIPPI IN CIVIL WAR

(At the ALTGA meeting in May, Mrs. LaJuana Goldsby spoke on Trans-Mississippi battles of the Civil War. These took place in Louisiana-Pleasant Hill, Mansfield, etc. Listed are the companies of the troops.)

### I. ARTILLERY

- A. 1st Reg. Heavy-Co's B, C, D, E, F, H. & K served in Ft. Jackson & Ft. Philip.
- B. 2nd Batt. Heavy.
- C. 8th Batt. Heavy-In 1864-a large contingent joined Trans-Mississippi Dept. Ft. Buhlow near Pineville.
- D. 12th Batt. Heavy-Aug 1862-ordered to Port Hudson.
- E. Pointe Coupe Batt-Co's A & C-Port Hudson.
- F. 1st Battery (St. Mary's Cannoniers) (Cornay).
- G. 1st Regular Battery (Semmes).
- H. 2nd Battery (Boone).
- I. 3rd Battery (Bell Battery).
- J. 4th Battery (Cameron).
- K. 5th Battery (Pelican Artillery).
- L. 6th Battery (Grosse Tete Flying Artillery) (West's) (supported Mouton's Division & Mansfield, also Battle of Pleasant Hill. Randol's Texas Brigade.
- M. Crescent Artillery-Co. A.
- N. King's Battery (Bull Battery).

### II. CAVALRY

- 1. 2nd Regiment (Vincent).
- 2. 3rd Regiment (Harrison).
- 3. 3rd Regiment (Wingfield).
- 4. 4th Regiment (McNeill).
- 5. 5th Regiment (Capers).
- 6. 6th Regiment (Wm. Harrison) Courier and Guard Duty around Shreveport.
- 7. 7th Regiment (Bringies).
- 8. 8th Regiment (Clark).
- 9. Gober's Regiment-Mounted Infantry (Mississippi & Louisiana).
- 10. Ogden's Regiment (Mississippi & Louisiana).
- 11. Power's Regiment (Louisiana & Mississippi).
- 12. 1st State Guards Batt.-Consolidated with 2nd LA State Guard Batt.-8th La. Cavalry Regiment.
- 13. 1st Trans-Miss. Batt.
- 14. 2nd State Guard Batt. (Favrot).
- 15. 9th Batt. Partison Rangers.
- 16. 13th Batt. Partison Rangers.
- 17. 15th Batt.
- 18. Breazeale's Batt. Partison Rangers.
- 19. Cage's Battalion.
- 20. Harrison's Battalion.
- 21. Red River Scout's Battalion.

### III. INFANTRY

- 1. 18th Regiment (Alfred Mouton)
- 2. 18th Consolidated Regiment.
- 3. 24th Regiment (Crescent Reg.).
- 4. 26th Regiment.

(Cont'd on P. 180)

## LOUISIANA VOTER REGISTRATION 1898

### RED RIVER PARISH

THE LARGER NUMBER OF LISTINGS IN THE 1898 VOTER REGISTRATION WAS ENCOURAGED BY THE 1898 CONSTITUTION, WHICH WAS EXPRESSLY WORDED TO DISENFRANCHISE NEGRO VOTERS. UNDER THIS NEW CONSTITUTION A MAN HAD TO EITHER OWN PROPERTY OR BE ABLE TO READ AND WRITE IN ORDER TO VOTE. IT ALSO INCLUDED A "GRANDFATHER CLAUSE", WHICH STATED THAT A PERSON COULD ALSO QUALIFY AS A VOTER IF HE, HIS FATHER, OR HIS GRANDFATHER WERE REGISTERED VOTERS AS OF 1 JANUARY 1867.

\* \* \* \* \*

# RED RIVER PARISH VOTERS ROLLS

DATE OF REGISTRY	NAME	AGE	COLOR	NATIVI- TY	VOTERS RES. PRES. WARD	OCCUPATION	TIME OF STATE
July 8	ALLUMS, J. H.	42	W	LA	RR PAR 3	Farmer	42
8	ALLUMS, B. F.	53	W	AL	RR PAR 3	"	39
30	ADKINS, E. S.	49	W	LA	RR PAR 2	"	35
30	ADKINS, O. W.	51	W	GA	RR PAR 2	"	36
Aug 4	ANGLIN, D. H.	50	W	GA	RR PAR 3	"	37
5	ADKINS, J. M.	49	W	GA	RR PAR 1	"	8
Jul 21	BREEDLOVE, J.A.	44	W	GA	RR PAR 1	"	38
26	BROWN, F. C.	52	W	LA	RR PAR 2	"	52
30	BARNES, J. V.	57	W	MS	RR PAR 2	"	16
Aug 6	BROWN, T. D.	36	W	LA	RR PAR 5	"	36
26	BAMBURG, A. C.	37	W	MS	RR PAR 1	"	36
26	BAMBURG, W. F.	\$@	W	AL	RR PAR 1	"	36
27	BATES, Cain	52	W	VA	RR PAR 5	"	27
27	BELL, W. F.	22	W	LA	RR PAR 4	Salesman	22
Aug 5	CONLEY, J. F. Sr	39	W	LA	RR PAR 3	Farmer	39
13	CAWTHON, J. D.	73	W	GA	RR PAR 1	"	47
27	COX, Ransom	68	W	AL	RR PAR 1	"	39
31	CARAWAY, J. H.	35	W	GA	RR PAR 3	"	28
31	COX, W. A.	32	W	LA	RR PAR 1	"	32
Jul 8	DURHAM, J. W.	23	W	LA	RR PAR 3	Teacher	28
11	DOSS, R. M.	45	W	MS	RR PAR 2	Farmer	16
Aug 6	ELLIOTT, N. C.	26	W	LA	RR PAR 1	"	26
Jul 6	FRIERSON, J. A.	52	W	AL	RR PAR 6	"	49
6	FRIERSON, Robt. B	76	W	SC	RR PAR 6	"	50
8	FLOWERS, W. R.	23	W	LA	RR PAR 3	"	23
23	FURGERSON, W. F.	50	W	AR	RR PAR 3	"	31
23	FURGERSON, Dave	43	W	TX	RR PAR 3	"	31
22	FURGERSON, Dave	58	W	VA	RR PAR 6	"	26
27	FOLEY, James	66	W	Ireland	RR PAR 4	"	33
30	FLANNIGAN, Marshall	41	W	LA	RR PAR 6	"	41
Jul 19	GILL, J. J.	28	W	AL	RR PAR 4	"	26
Aug 4	GRANT, A. G., Sr	70	W	IN	RR PAR 1	"	48
29	GAY, J. M.	26	W	AL	RR PAR 3	"	15
29	GAY, J. J.	64	W	AL	RR PAR 3	"	18
Jul 7	HAWKINS, W. E.	38	W	LA	RR PAR 4	Physician	38
21	HUNTER, C. H.	34	W	LA	RR PAR 2	Farmer	34
30	HOLLEY, D. L.	37	W	LA	RR PAR 1	"	37
Aug 6	HOLLEY, N. C.	65	W	SC	RR PAR 1	"	44
31	HUBBARD, D. C.	37	W	LA	RR PAR 1	"	37
Jul 7	JONES, A. C.	31	W	LA	RR PAR 3	"	26
Jul 8	LAWSON, A. J.	53	W	TX	RR PAR 3	"	31
Aug 19	LONGINO, B.	37	W	LA	RR PAR 1	"	37
26	LONGINO, W. H. H.	43	W	LA	RR PAR 1	"	43
27	LONG, W. J.	32	W	LA	RR PAR 1	"	32
31	LONG, F. A.	22	W	LA	RR PAR 1	"	22
Jul 8	LAWSON, Roger Jr	24	W	LA	RR PAR 3	"	24

RESIDENCE PARISH WARD	YEAR BORN	DO YOU REGISTER AS A VOTER AS OF 1 JAN 1867	NAME OF FATHER OR GRANDFATHER	FATHER OR GRANDFATHER	WHERE RESIDED
20 20	1855	NO	J. M. ALLUMS	FATHER	LA
24 24	1844	YES			
7 6	1847	NO	Davis ADKINS	"	"
3 3	1845	"	Davis ADKINS	"	"
27 12	1847	"	Henry ANGLIN	"	"
2 2	1849	"	L. D. ADKINS	"	"
27 21	1854	"	W. O. BREEDLOVE	"	"
27 4	1845	YES			
15 15	1841	"			
27 27	1862	NO	T. D. BROWN	"	"
27 27	1859	"	C. H. BAMBURG	"	"
27 27	1856	"	C. H. BAMBURG	"	"
27 15	1845	YES			
22 22	1875	NO	F. W. BELL	"	"
17 17	1858	"	Thos. CONLEY	"	"
1 1	1825	YES			
27 27	1830	"			
18 18	1863	NO	T. C. CARAWAY	"	GA
32 32	1866	"	Ransom COX	"	LA
2 2	1874	"	Jas. DURHAM	G-FATHER	GA
16 10	1852	"	W. J. DOSS	FATHER	"
26 4	1872	"	H. P. ELLIOTT	"	LA
20 20	1846	"	R. B. FRIERSON	"	"
10 10	1821	YES			
23 23	1874	NO	G. W. FLOWERS	"	GA
27 27	1849	"	J. H. FURGERSON	"	TX
27 27	1855	"	J. H. FURGERSON	"	"
26 26	1840	YES			
26 26	1833	(naturalized " East Pt LA)			
24 24	1857	NO	Dave FLANNIGAN	"	LA
14 14	1870	"	R. H. GILL	"	AL
28 6	1828	YES			
15 15	1872	NO	J. J. GAY	"	AL
18 18	1834	YES			
15 15	1859	NO			
27 7	1864	"	Wm HUNTER	"	LA
37 37	1861	"	N. C. HOLLEY	"	"
27 27	1833	YES			
37 37	1861	NO	D. R. HUBBARD	"	LA
26 26	1866	"	A. F. JONES	"	GA
6 mo 6 mo	1845	"	Andrew LAWSON	"	TX
26 26	1861	"	Bill LONGINO	"	LA
27 27	1857	"	Bill LONGINO	"	"
32 32	1866	"	Sydney LONG	"	"
21 7	1876	"	Sidney LONG	"	"
3 3	1874	"	Roger LAWSON	G-FATHER	"



DATE OF REGISTRY	NAME	AGE	COLOR	NATIVI- TY	VOTERS RES. PRES. WARD	OCCUPATION	TIME OF STATE
Jul 7	MARSTON, Jas. G.	26	W	LA	RR PAR 4	Farmer	26
8	MORSE, T. F.	30	W	LA	RR PAR 3	"	30
30	MILLER, J. R.	24	W	LA	RR PAR 2	"	24
Jul 7	McLEOD, A. S.	51	W	TX	RR PAR 4	"	35
7	McGINTY, A. L.	22	W	LA	RR PAR 3	"	22
Aug 30	McCOY, H. L.	56	W	MS	RR PAR 3	"	9
Jul 8	PEARCE, W. M.	49	W	AL	RR PAR 3	"	20
20	PAGE, F. E.	29	W	LA	RR PAR 3	"	29
Aug 26	PICKETT, D. W.	43	W	LA	RR PAR 1	"	43
Jul 8	STEVENS, W. F.	37	W	LA	RR PAR 3	"	37
11	SMITH, J. B.	44	W	LA	RR PAR 2	"	44
19	SIMS, D. S.	27	W	LA	RR PAR 4	"	27
23	STOTHART, J. B.	49	W	TN	RR PAR 6	"	39
Aug 13	SMITH, R. H.	63	W	AL	RR PAR 4	"	44
25	STEVENS, W. C.	44	W	LA	RR PAR 3	"	44
26	STEVENS, S. N.	36	W	LA	RR PAR 3	"	36
Jul 8	WIGGINS, J. B.	36	W	AL	RR PAR 3	"	24
8	WIMBERLY, C. R.	66	W	GA	RR PAR 3	"	60
26	WIMBERLY, F. F.	22	W	LA	RR PAR 3	"	22
26	WREN, A. R.	41	W	LA	RR PAR 1	"	27
Aug 19	WOOD, J. H.	26	W	LA	RR PAR 1	"	26
22	WILLIAMS, W. N.	50	W	LA	RR PAR 1	"	50
29	WOOD, O. C.	54	W	AL	RR PAR 1	"	39
29	WATERS, Bryant	24	W	AL	RR PAR 3	"	22

\* \* \* \* \*

(Cont'd from P. 176)

5. 27th Regiment.
6. 28th Regiment.
7. 30th Regiment.
8. 32nd Regiment (Miles' Legion).
9. 33rd Regiment.
10. Consolidated Crescent Regiment. (Col. James H. Beard).
11. 1st State Batt.
12. 8th Battalion.
13. 10th Battalion.
14. 11th Battalion.
15. 15th Batt. Sharpshooters.
16. Keary's Batt.
17. Louisiana Defenders Batt.
18. Miles' Legion.

#### IV. RED RIVER CAMPAIGN

- A. Forces of Alfred Mouton.
- B. General Tom Green/Texas Cavalry.
- C. Col. J. P. Major-Three regiments of Texas Cavalry.
- D. Maj. Gen. J. B. McGruder-Texas Troops.
- E. Gen. Camille de Polignac.
- F. Walker's Texas Division.

\* \* \* \* \*

RESIDENCE PARISH WARD	YEAR BORN	DO YOU REGISTER AS A VOTER AS OF 1 JAN 1867	NAME OF FATHER OR GRANDFATHER	FATHER OR GRANDFATHER	WHERE RESIDED
26 26	1871	NO	P. A. MORSE	G-FATHER	LA
20 10	1867	"	C. W. MORSE	FATHER	"
24 4	1874	"	Thos MILLER	"	"
12 12	1845	"	J. A. McLEOD	"	"
2 2	1875	"	J. W. McGINTY	G-FATHER	AR
9 9	1840	"	Drayden McCOY	FATHER	MS
10 10	1849	"		G-FATHER	
15 15	1868	"	T. L. PAGE	FATHER	LA
27 27	1855	"	Hosea PICKETT	"	"
9 9	1861	"	Louis STEVENS	"	"
7 3	1853	"	Jesse SMITH	"	"
7 mo 7 mo	1871	"	W. R. SIMS	"	"
17 7 mo	1835	YES			
27 27	1855	NO	N. E. STEVENS	"	"
25 25	1862	"	N. E. STEVENS	"	"
4 4	1861	"	J. E. WIGGINS	"	AL
26 21	1832	YES			
22 22	1875	NO	C. P. WIMBERLY	"	LA
27 27	1857	"	G. W. WREN	"	"
8 8	1872	"	O. C. WOODS	"	"
27 27	1847	"	Raleigh WILLIAMS	"	"
1 1	1844	YES			
22 22	1874	NO	Bryant WATERS	G-FATHER	AL

\*\*\*\*\*

## ALTGA COMMITTEES

### COMMITTEE

### CHAIRMAN

### MEMBERS

Hospitality  
Publicity  
Telephone

Winona Clarkson 686-8338  
Betty Gorman 868-2807  
Betty Kintzing 221-2988

Thelma Sabbath  
Carl Hallgren  
Thelma Sabbath, Lillian Nash,  
Sharron McAvoy, Vernelle Rose,  
Constance Whatley, Ruth Mann,  
Betty Gorman, Dale Jennings  
Isabelle Woods, Victor Rose,  
Betty Gorman, Sharron McAvoy

Finance

Ethel Krause 746-3125

Programs  
Historian  
Resale  
Exchange  
Education  
Web Page  
Seminar

Marguerite Loftin 746-4598  
Roy Henderson 861-7449  
Dale Jennings 965-9342  
Herman Weiland 746-3811  
Victor Rose 687-3673  
Chris Oliver 636-5669  
Marguerite Loftin 746-4598

Willie Griffin, Marguerite Loftin  
Victor Rose, Ethel Krause, Chris  
Oliver, Willie Griffin

\*\*\*\*\*

# Ancestor Chart

Name of Compiler Raymon L. Owens  
 Address 846 E. River Rd.,  
 City, State Shreveport, LA 71105-2811  
 Date July 1999

Person No. 1 on this chart is the same  
 person as No. \_\_\_\_\_ on chart No. \_\_\_\_\_

Chart No. \_\_\_\_\_

b. Date of Birth  
 p.b. Place of Birth  
 m. Date of Marriage  
 d. Date of Death  
 p.d. Place of Death

## 4 William Thomas OWENS

(Father of No. 2)  
 b. 4 Nov 1867  
 p.b. Winston Co., AL  
 m.  
 d. 6 Jul 1934  
 p.d. Minden, Webster Par., LA

## 2 Marvin Lee OWENS

(Father of No. 1)  
 b. 13 Oct 1898  
 p.b. Winston Co., AL  
 m. 11 Nov 1920 Sibley, Webster  
 d. 16 Nov 1984 Par., LA  
 p.d. Shreveport, Caddo Par., LA

## 5 Mamie Edith FIELDS

(Mother of No. 2)  
 b. 26 Dec 1871  
 p.b. Bowden, Winston Co., AL  
 d. 8 Sep 1951  
 p.d. Shreveport, Caddo Par., LA

## 1 Raymon Lafayette OWENS

b. 14 Jan 1924  
 p.b. Castor, Bienville Par., LA  
 m. 21 Aug 1943 Shreveport, Caddo  
 d. Par., LA  
 p.d.

## 6 Isaac Collins CHANDLER

(Father of No. 3)  
 b. 5 Aug 1872  
 p.b. Rocky Mount, Bienville  
 m. 1894 Par., LA  
 d. 6 Sep 1957  
 p.d. Shreveport, Caddo Par., LA

## 3 Susie Estelle CHANDLER

(Mother of No. 1)  
 b. 27 Jul 1902  
 p.b. Victoria, Natchitoches Par.,  
 d. 10 Oct 1980 LA  
 p.d. Shreveport, Caddo Par., LA

## 7 Mary Elizabeth (Betty) MORGAN

(Mother of No. 3)  
 b. 26 Feb 1876  
 p.b. AR  
 d. 17 Jan 1940  
 p.d. Minden, Webster Par., LA

## 8 Albert LaFayette OWENS

(Father of No. 4)  
 b. 17 Jun 1846  
 p.b. Cleburne Co., AL  
 m.  
 d. 12 Sep 1924  
 p.d. Winston Co., AL  
 9 Frances NUNNALLY  
 (Mother of No. 4)

b. 1884  
 p.b.  
 d. 1904  
 p.d.

## 10 (Father of No. 5)

b.  
 p.b.  
 m.  
 d.  
 p.d.

## 11 (Mother of No. 5)

b.  
 p.b.  
 d.  
 p.d.

## 12 David CHANDLER

(Father of No. 6)  
 b. 10 May 1818  
 p.b. Kinchen Monzingo, Webster  
 m. 1867 Par., LA  
 d. 26 Dec 1910  
 p.d. Minden, Webster Par., LA  
 Int. Pine Grove Cemetery  
 Nancy L. SLEDGE  
 (Mother of No. 6)

b. 12 Jan 1839  
 p.b. Macon, Bibb Co., GA  
 d. 1894  
 p.d. Minden, Webster Par., LA  
 Int Pine Grove Cemetery

## 14 (Father of No. 7)

b.  
 p.b.  
 m.  
 d.  
 p.d.

## 15 (Mother of No. 7)

b.  
 p.b.  
 d.  
 p.d.

16

b. (Father of No. 8,  
 m. Cont. on chart No. \_\_\_\_\_

17

b. (Mother of No. 8,  
 d. Cont. on chart No. \_\_\_\_\_

18

b. (Father of No. 9,  
 m. Cont. on chart No. \_\_\_\_\_

19

b. (Mother of No. 9,  
 d. Cont. on chart No. \_\_\_\_\_

20

b. (Father of No. 10,  
 m. Cont. on chart No. \_\_\_\_\_

21

b. (Mother of No. 10,  
 d. Cont. on chart No. \_\_\_\_\_

22

b. (Father of No. 11,  
 m. Cont. on chart No. \_\_\_\_\_

23

b. (Mother of N  
 d. Cont. on cha

24

Solomon CHANDLER  
 b. (Father of No. 12,  
 m. Cont. on chart No. \_\_\_\_\_

25

b. (Mother of No. 12,  
 d. Cont. on chart No. \_\_\_\_\_

26

Milton SLEDGE  
 b. England (Father of No. 13,  
 m. Cont. on chart No. \_\_\_\_\_

27

Debbie McGINTY  
 b. Ireland (Mother of No. 13,  
 d. Cont. on chart No. \_\_\_\_\_

28

b. (Father of No. 14,  
 m. Cont. on chart No. \_\_\_\_\_

29

b. (Mother of No. 14,  
 d. Cont. on chart No. \_\_\_\_\_

30

b. (Father of No. 15,  
 m. Cont. on chart No. \_\_\_\_\_

31

b. (Mother of No. 15,  
 d. Cont. on chart No. \_\_\_\_\_

(Spouse of No. 1)

b.  
 p.b.

d.  
 p.d.

p.d. 182



This old Bible, once beautiful, but now well-worn by time, belonged to Sarah C. Maxwell, printed on 1st blank page in Bible "her born 1914". She lived in Mississippi, and when she died the Bible was given to the mother of Annette Williams, 1636 Holiday Pl., Bossier City, LA 71112. The title page of this Bible did not have the copyright or company that published it, but on further inspection, these items were found in very small print in a full page picture of Moses. Copyright 1896 by Harris Jones & Company. Many beautiful lithographs of animals & birds appear before the body of the Bible, and there is a concordance at the back. It measures  $9\frac{1}{2}$  x  $12\frac{1}{8}$  x  $3\frac{1}{8}$  thick. Debossed cover. It was contained in a box, ( $11\frac{1}{2}$  x  $13\frac{7}{8}$ ), which had a faux ostrich cover and REAMS in gold on top. The inside of this cover had REAMS again and 156 months (see above) in gold. Could anyone give us more information on the 156 months or 13 years?

\* \* \* \* \*





# MARRIAGES.

Ferry Jackson Maxwell was born  
Sept. the 26. 1840.

Sarah Cynthia Benson Maxwell was born  
Dec. the 15 1847.

Courtney Virginia Maxwell was born  
November the 24 1868.

Virgil Eugene Maxwell was born  
February the 14 1870.

Hettie Stella Maxwell was born  
July the 3rd 1871.

Benzemine Franklin Maxwell  
was born October the 10 1872.

Effie Gemima and Nettie Lanora  
Maxwell was born July the 26. 1875.

Rosabelle Maxwell was born 1877  
March the 1st 1877.

# BIRTHS.

Alta Guendolen Maxwell  
was born February the 27<sup>th</sup>. 1882  
Willie Lea Maxwell was born  
March the 31 1883  
Cubie Leola Maxwell was  
born August the 7<sup>th</sup>. 1884  
Henry Pinkney Louis Maxwell  
was born December the 12<sup>th</sup> 1886  
Annie Bertha Jewel Maxwell  
was born August the 13<sup>th</sup>. 1891

Omitted. Elsie Fritna Maxwell  
was Born Feb 1889



# DEATHS.

Hettie Stela Maxwell Died October  
the 27. 1872

Icie Ietna Maxwell Died July the  
30<sup>th</sup> 1884

Henry Pinkney Louis Maxwell  
Died. February the 18 1890

Courtny Virginia Maxwell  
Died October the 30<sup>th</sup> 1891

Henry Jackson Maxwell  
Died February the 13 1912

Willie Le Maxwell Died  
January the 19 1912

Sarah Cynthia Beeson Maxwell  
died April 23 1939



November the 24 A.D. 1868  
 Virgil, Eugene, Maxwell. was born  
 February the 14<sup>th</sup> A.D. 1870  
 Benjamin. Franklin Maxwell  
 was born October the 10 A.D. 1872  
 Hattie, Stella, Maxwell. was  
 born July the 3rd A.D. 1871  
 Effie Gertrude Maxwell born  
 July the 26<sup>th</sup> A.D. 1875  
 Nettie Lenora Maxwell same  
 (TWINS)

Born  
 Rosabell Maxwell May 1 1877  
 Alta Gerendolyn Maxwell Feb 2 1882  
 Willie Lee Maxwell Mar 3 1888  
 Cubie Leola Maxwell Aug 7 1894  
 Henry Pinkney Maxwell Dec 2 1886  
 Fie Futna Maxwell Feb 15 1889  
 Jewel Maxwell  
 August 15 1881

These two pieces from another old Bible were found inside the aforementioned Bible.

This information was also enclosed in the MAXWELL Bible and contains the connections to the BEESON family.

Mother- Sarah Cynthia Beeson Maxwell  
Father- Henry Jackson Maxwell

(Cullen's brother ½)

Harold Ray & Marge Beeson, Rt #1 Box 210E Brookhaven. MS (?)  
Rev. J. H. Beeson-great grandfather- John Beeson-grandfather.  
Clearance Beeson-father-dead-Maude Peavey

Cullen & Annie Marie Beeson

K. C. & Mildred Beeson

James L. & Faye Beeson

half brother

Carry & Bobbie Beeson

Bobby Lee & Nell Beeson

(all except James L. live in Brookhaven, MS, James L. lives in Huston, Texas)

Wiley Peavy & Ella Beeson Peavy (Cullen's uncle & aunt. Ed Peavy-Wiley's brother lived next to Pleasant Grove Church. Edgar Way-friend across the road from John Beeson's.

Cullen & Annie Marie's children are

Joe Pat Beeson

Gary Wayne Beeson

Marty William Beeson

Randy Mark Beeson

Uncles living

Leland & Lela Beeson

Inez & George Pennington

Bess (Beeson) Bridges

\* \* \* \* \*

Membership Fourth Quarter 1999;

SANDERS, Edgar Gordon & Helen R.-217 India Dr., Shreveport, LA 71115-3005.

McDANIEL, KERNOP, VANCE, ADKINS

SCARBOROUGH, Dorothy Green-479 Arthur Moore Dr., Green Cove Springs, FL 32043-  
HILL, HOLLIS, EDWARDS /9506.

MHOON, Jan Sharon-2870 W. Devonshire Ave., Hemet, CA 92545-5017.

SEABAUGH, DAME, MULLEN

PATRICK, Dorothy Lee-7021 Seven Oaks Ave., Baton Rouge, LA 70806-7435.

(Mrs. Patrick is a relative of Ennis M. Tipton's wife, Ema Lee)

SMITH, LEDBETTER, REILY, JONES

(Above all new members 1999)

\* \* \* \* \*



## BOOK REVIEWS

by Herman Weiland

TITLE: RICHMOND: ITS PEOPLE AND ITS STORY by Mary Newton Stanard.

ORDER FROM: Heritage Books, Inc., 1540-E Pointer Pl., Bowie, MD 20716.  
Credit Cards 1-800-398-7709.

COST: \$29.50 ppd, Order No. 3S704.

The author has compiled this work from histories, public records, letters, diaries, Virginia Gazette newspaper files and periodicals "...to convey an impression in one single book of life whether military, public, economic, home, hospital, social, literary, white persons and negroes, grown persons and children, rich and poor, high and low in their relations to the place and one another."

This work is grouped by date, from the Colonial Period (1607-1774) through the War Between the States. Individual chapters are devoted to conflict with the Indians, Revolutionary War, architecture and monument, churches, threat of insurrection, trial of Aaron Burr, the Richmond Theater fire, War of 1812, Civil War and the Reconstruction. Many notable Virginians are examined in the text, including Thomas Jefferson, Colonel Byrd, John Brown, Robert E. Lee, Jefferson Davis and Edgar Allen Poe. The book has an index of "Places of Special Interest" in addition to the name and place index. If your interests is in Virginia, and especially Richmond, you will want to check this book out. (1923) reprint 1999, 8½ x 5½, 239 pp., illus, map, index, soft cover.

\* \* \* \* \*

TITLE: FORSYTH COUNTY (NORTH CAROLINA) by Adelaide L. Pries.

ORDER FROM: Heritage Books, Inc., 1540-E Pointer Pl., Bowie, MD 20716.  
Credit Cards 1-800-398-7709.

COST: \$20.00 ppd. Order No. 3F631.

This small book gives a very detailed history of the people and establishment of Forsyth County, home of Winston Salem. This land had many owners as a result of a series of royal bequests, land patents and proprietorships. In 1753, the Moravians came from Germany via Pennsylvania and began to settle on a tract of land that became Wachovia. Other early settlements were Kernersville, Friedberg, Friedland and Hope. Eventually, townships were formed, civic groups convened, and a tract was chosen on which to build a county courthouse.

Leading citizens are named throughout this history, which also discusses the county militia, the Civil War and the formation of township lines. North Carolina's secession from the Union is covered, as well as Forsyth County's role in the Civil War. No battles were fought there, but it was a place of

refuge and supply, and hundreds of Forsyth men joined the Confederate cause. Various Forsyth County regimental commanders of the war are named. There are maps illustrating the evolution of the county. Two court houses are also illustrated. The original subject index contains places, events and names. (1898) Reprint 1999, 8½ x 5½, 132 pp., maps, index, soft cover.

\* \* \* \* \*

TITLE: FIRST ALABAMA CAVALRY, USA: HOMAGE TO PATRIOTISM by Glenda McWhirter Todd.

ORDER FROM: Heritage Books, Inc., 1540-E Pointer Pl., Bowie, MD 20716.  
Credit Card 1-800-398-7709.

COST: \$38.00 ppd Order No. T511.

The National Archives Microfilm Publications, Microcopy No. 276, contains 10 rolls of microfilm, which contain the compiled service records of volunteer Union soldiers belonging to the First Regiment of Alabama Cavalry. This regiment is the only organization of Union troops from Alabama for which the National Archives has separate compiled service records, except those designated as US Colored Troops. Many of these men traveled great distances to avoid being captured by Confederate soldiers and branded as traitors to join the Union Army. The text includes: Reports from the field; a chapter on General William Tecumseh Sherman; some National cemeteries and places of death of the First Alabama Cavalry Union Soldiers, the combat diary of Sgt. Major Francis Wayland Dunn and a roster of soldiers in the regiment. The roster is alphabetized and included the following information on each soldier: name, age, residence, family information, and what happened to them during the war, along with biographical information, photographs and many other interesting facts. 1999, 5½ x 8½, 408 pp., illus., bibl., full-name index, soft cover.

\* \* \* \* \*

TITLE: CEMETERIES OF THE CITY OF NEWPORT NEWS, FORMERLY WARWICK COUNTY, VIRGINIA compiled and edited by Barry W. Miles and Gertrude Stead.

ORDER FROM: Heritage Books, Inc., 1540-E Pointer Pl., Bowie, MD 20716.  
Credit Card Order 1-800-398-7709.

COST: \$59.00 ppd. Order Book No. 3M340.

Prepared under the direction of the Hugh S. Watson, Jr., Genealogical Society of Virginia, this book contains a priceless collection of rapidly vanishing tombstone inscriptions which date from the 1600s to the present with some historical background, where available, about the individual cemeteries, the plantations and the surrounding settlements. In addition to the public cemeteries it includes the family cemeteries of Cary, Cole, Curtis, Gambol, Garrow, Harwood, Lee, Maney, Wilber and Young. Mulberry Island cemeteries include the families of Crafford, Curtis, Fitchett and Nettles. A large 20" x 66" map is included for ease in locating the cemeteries. 1999, 145 pp, 8.5 x 11, illustrated; full-name index, hardcover.

\* \* \* \* \*

TITLE: SMYTH COUNTY (VIRGINIA) HISTORY AND TRADITIONS by Goodridge Wilson.

ORDER FROM: Heritage Books, Inc., 1540-E Pointer Pl., Bowie, MD 20716.  
Credit Card Orders 1-800-398-7709.

COST: \$36.00 ppd. Order Book No. 3W347.



First published in 1932, this book was written to Commemorate the 100th Anniversary of the Organization of Smyth County, Virginia. It is, in the author's words, "an attempt to preserve some of its history and traditions and show in readable form the development of its life, industries, and institutions." This work begins in the 1700s, prior to the county's establishment, and records interesting incidents and major historic events on the day, as well as the names and character of many early settlers. There are also rare documents, such as Colonel John Buchanan's journal. William Campbell's letter to his wife, and the Tory warning to Campbell. The history then describes the first permanent settlement, and the tumultuous times of Dunmore's War and the American Revolution.

Genealogical data and family history are in the narrative. This is a complete and relatively modern history, which includes aerial photographs. Chapters include politics, churches, schools, newspapers, industries, banks, transportation, the Civil War, the First World War, towns, villages, communities, Benjamin Franklin Buchanan and Laurel Farm. 1932 Reprint 1998, 5.5 x 8.5, 397 pp, illustrated, original name index, plus a subject index, soft cover.

\* \* \* \* \*

TITLE: THE HALL FAMILY OF KENTUCKY AND TEXAS, Revised. Compiled by Roy Marland Hall.

CONTACT: Only enough books were printed for select libraries and contributors. If copies are left over after this distribution they may be made available to purchase. Contact Roy M. Hall, 2741 Morse Ave., Sacramento, CA 95821, if you desire to purchase a copy.

The book begins with David Hall (c1775-bef1840) and Elizabeth Ruble (c1767-c1826), widow of Armstrong Hale. They married 22 Dec 1800 in Mercer Co., KY, moved to Ohio Co., KY by 1812. The book continues on through the 3 children of David and Elizabeth Hall. 1. Theodosia Hall, who married Edward DeHaven. 2. Elizabeth Hall, who married Micijah Pool. 3. Jesse Hall, who married Matilda Jane Davison.

Jesse and Matilda Hall came to Texas by wagon in 1847, settling near Daingerfield in Titus Co. They had 8 children with 5 serving in the Civil War. This family scattered over most of Northeastern Texas, so if you have a Hall in your family from this area, you will want to check this book out.

Additional chapters in the book include the Hall family connection to the Ruble, Rutherford, Duncan/Rountree, Allen, Burkhead, Carrigan/Clark and Tank-sley/Hallbrook families. The book is well-documented, the numbering system used identifies the parent of each person making it easy to follow any lineage. 1999, 8.5 x 11, 200 pp, index, hardcover.

\* \* \* \* \*

TITLE: ACCOMACK COUNTY, VIRGINIA, COURT ORDER ABSTRACTS, Vol 9, 1697-1703 by JoAnn Riley McKey.

ORDER FROM: Heritage Books, Inc., 1540-E Pointer Place, Bowie, MD.  
Credit Cards 1-800-398-7709.

COST: \$25.50 ppd Order No. M138.

JoAnn McKey is transcribing all of the Court Order Abstracts for Accomack County, Virginia. Heritage Books donated a copy of Volume 7, 1682-1690, which was reviewed in the 1st Quarter of THE GENIE 1999. Please refer there for details on the series. This book (Vol 9) begins with December 1697 court session and

concludes with May 1703. This book contains many accounts of boundary disputes, crime and punishment, church and religion, domestic violence, food and farming, servants and slaves and many more interesting and unusual incidents during this period. 1999, 5½ x 8½ pp., full-name plus subject index, soft cover.

\* \* \* \* \*

## FROM THE SHORES OF BAYOU LA FOURCHE

By Merrill C. Williams  
23750 Highland Valley Rd.,  
Diamond Bar, CA 91765-1184

By the turn of the nineteenth century, the ever increasing Catholic Churches were THE CHURCH on the Gulf Coast and the lower Mississippi River lands. They became points of reference in legal land descriptions. The 1803 count was four of the churches, of the emerging Catholic Diocese of Baton Rouge, on the wrong (west) side of the river to be enumerated as part of the West Florida Territory and Republic. Baton Rouge's Saint Joseph and Saint Gabriel were the only churches established east of the river by 1793.

The Assumption Church at Plattenville was also built in 1793, "along the left shore of the Bayou LaFourche de Chitamachos." These landmarks determined plantation location descriptions in what was to become Assumption Parish. Believing that "above the church" was downstream along the bayou will, in 1810, place one of Augustin Dominguez's plantations on the road to the colonial homes of the Napoleonville area. Changing leagues into miles places the three arpents frontage one and one-half miles south of the church on Highway 308.

This was only one of the checkered land holdings, along the Bayou La Fourche, of the Dominguez Brothers that are shown with their families in the census of 1810 living in Assumption Parish. Much of their land was consolidated into Welchman Thomas Pugh's Madewood Plantation. The plantation house, built in 1846, has been restored and remains "The Queen of the Bayou."

The 1803-1819 Assumption Catholic Church records verify the Louisiana Census. It shows the brothers Francisco, Manuel and Augustin with the birth, baptism, death and marriage dates of their children in this period. A younger brother, Juan, had three children born in this period-after 1810. Also shown are the oldest members of the family. They are Antonio Dominguez (1757-1807) and Augustin Dominguez I (1759-1818). No verification is found in these church records to show a relationship of this Greater Family to Isabella Dominguez-Burnell. Although Pierra D. Dominguez I of Saint Gabriel Parish is of an age to be Isabella's uncle, the Assumption Church members were almost all of Spanish descent.

On page 374 of the Baton Rouge Diocese records of these years, some of the Grand Pre' family statistics are shown. However, there is no explanation of Don Carlos' full name translation as being "Charles Butcher of the Big Meadow." It does show his second son, the 1810 Commander of Fort San Carlos at Baton Rouge memorialized as DON Luis de Gran Pre. But there is no mention of his receiving the gold repeater watch that Don Carlos wanted him to have "and keep it as a jewel which was given to me by his highness, the deceased Infante, Don Luis..."

\* \* \* \* \*



By Isabelle Woods

- LARSON            Seek any record of death for Henry Franklin "Frank" SNODGRASS b 22 Nov 1872,  
RUYLE             d 24 Dec "in the 1930's." He was killed in or near New Orleans, Orleans Parish, LA.  
SNODGRASS        His wife, Mary Jane SNODGRASS, was in Shreveport, Caddo Parish, LA, in 1937.  
                     She had children from a previous marriage by the name of "RUYLE" who lived in  
                     Shreveport, LA. Write: Eunice B. LARSON, 50 South Beretania St., #C-207,  
                     Honolulu, Hawaii 96813-2294.
- MHOON            Desire the name of cemetery in Shreveport, Caddo Parish, LA in which William D.  
SEABAUGH        MHOON and wife, Willie Pearl (SEABAUGH) MHOON, are buried. They resided in  
                     Shreveport, LA, about 1910. Write: Jane MHOON, 2870 West Devonshire Avenue,  
                     Hemet, California 92545.
- SUTTON            A website for descendants of Thomas SUTTON, who lived in Jefferson County, MO, in  
                     1835 has been created at "<http://www.homestead.com/suttonplace/index.html>." He owned  
                     a sawmill and gristmill. His descendants settled in North Louisiana. Contact: Donna  
                     SUTTON, Minden, Louisiana; E-mail: [sutton2@shreve.net](mailto:sutton2@shreve.net).
- EASTON            Seek information on Harry D. EASTON, his wife, Amy Ruth EASTON-FORMAN  
FORMAN            (b Nov 1884, Hackett, AR), 19 Feb 1968, Shreveport, Caddo Parish, LA), and son, D. O.  
                     EASTON. They resided on 214 Dalzell Street, Shreveport, Caddo Parish, LA, according  
                     to the 1923-1924 *Shreveport City Directory*. Harry was a geologist. Probably due to  
                     Harry's association as an oil operator, they had connections with the State of Texas.  
                     When Amy Ruth died in 1968, she was a widow and still resided at the Dalzell Street  
                     address. Contact: Jerry FORMAN, 1508 West View Drive, Berkeley, CA 94705-1657;  
                     E-mail: [moosie@flash.net](mailto:moosie@flash.net).
- MITCHAM           Request help in locating information on George Alce MITCHAM (b 1855, d 1929), who  
                     is buried in the Mora Cemetery, Mora, LA. He allegedly belonged to the Mora Baptist  
                     Church in Mora, Natchitoches Parish, LA, ca 1920-1929. Contact: Jason Wayne  
                     MITCHAM; E-mail: [jace@globeco.net](mailto:jace@globeco.net).
- BUNCH            Seek 1860 Census/land records in Caddo Parish, LA, and information on the  
COFFMAN           descendants of Andrew D. COFFMAN (b 1824; d 1873 in Grainger, TN). Andrew  
HARRISON        and his twin, John H. B. COFFMAN, are two of nine children born to the union of David  
SANDERS         COFFMAN (b 1787; d 1838 in Polk Co., MO) and Susan BUNCH. They moved to Polk  
SHELTMAN        Co., MO, abt 1836. David was a Baptist preacher. Where is Andrew and wife #1,  
                     Elizabeth J. SANDERS (b 1828) from 1850 to 1866? Married in 1849 in Polk Co., they  
                     are still in Polk Co. in the 1850 Census. Did they have any children? Andrew resurfaced  
                     in Caddo Parish, LA, where he married wife #2, Magdalene SHELTMAN HARRISON  
                     on 21 Mar 1866. What information about Andrew is found on the license for marriage  
                     No. 2? Write: Carl COFFMAN, 1440 So. Hordly Street, Wichita, KS 67213, E-mail:  
                     [zellacoffman@hotmail.com](mailto:zellacoffman@hotmail.com).

\* \* \* \* \*

# BEAR CREEK CEMETERY

(This cemetery was found in Mildred Watkins' column in The Times in 1985. It was submitted by Billie Gene Poland. It lies in Bienville Parish between Bryceland and Bienville.)

Lawrence Bruce SIMMONS	Carrie B. DURBIN	Margaret BODDIE
30 Sep 1910	6 Jan 1874	1012-1924
27 Mar 1965	3 Jul 1964	(Grave not marked)
John Otis (Bud) SIMMONS	Jontie Tillie LOE	Yancy O. KING
23 Jun 1934	25 May 1870	21 Jan 1899
11 Jul 1976	21 Nov 1963	14 Apr 1968
Allen A. McGEE	Egan O. JORDAN	Billie Henry WRIGHT
24 Oct 1909	19 Nov 1889	18 Apr 1932
30 Jul 1963	29 Aug 1959	23 May 1971
Mary Gladys BROWN	William Jesse MARVIN	Cpl Btry B-518 Gun Bn
3 Oct 1903	TILLEY 27 Jan 1878	Korea
4 Jan 1976	14 Aug 1974	Mark Edward McCOY
Ella Olevia BROWN	Florence JORDAN TILLEY	11 Oct 1961
19 Oct 1880	8 Aug 1884	13 Jun 1974
13 Jun 1963	4 Feb 1958	Edgar GOSDIN
Jesse Lee CALHOUN	Patsy E. PAYNE CALHOUN	11 Feb 1896
6 Jun 1910	3 Aug 1939	5 Nov 1919 s/o
3 Sep 1976	31 May 1959	H.B. & E.L. GOSDIN
Lena C. SIMMONS	Martha June Inf d/o	Ella GOSDIN
1923-1958	M/M June CALHOUN	30 Jan 1880
Royce E. CALHOUN	27 Dec 1943	1 Oct 1912 w/o
31 Aug 1914	2 Feb 1944	H. B. GOSDIN
14 Oct 1969	Zelda P. CALHOUN	Baby G. W. COOK
Adeal (Bill) CALHOUN	8 Dec 1912	20 Mar 1922
1914-1979	15 Mar 1980 m	28 Jun 1922
Needham B. PLUNKETT	23 Dec 1933 to June	Gracey BODDIE
30 Mar 1870	C. CALHOUN	11 Sep 1904
11 Nov 1941	Will Hendry CALHOUN	10 Jan 1905
Eliza E. PLUNKETT	US Navy 28 Jun 1937	Hazel BODDIE
21 Nov 1869	9 Apr 1982	11 Sep 1904
12 Mar 1946	Jesse A. BODDIE	27 Mar 1905
Grover A. PULLIG	22 Aug 1869	Lois CALHOUN
Cpl 3 QM BN 5 Armd.	2 Jul 1937	24 Aug 1906
Div. WW II	Lula B. BODDIE	16 Oct 1907
7 Jul 1923	7 Dec 1868	Mary Ella CALHOUN
21 Sep 1952	30 Aug 1942	1 Jul 1935
Warren G. PULLIG	Joseph Jackson BODDIE	2 Jul 1935 d/o
19 Oct 1881	26 Dec 1862	Jesse & Effie CALHOUN
11 Jun 1966 h/o	20 Mar 1923	Ruby CALHOUN
Lizzie CALHOUN PULLIG	Margaret Ann McCOY	19 Nov 1917
23 Mar 1883	BODDIE 2 Dec 1853	14 Jul 1937
31 Mar 1947	20 Mar 1938	



John Henry CALHOUN	Inf s/o Jack & Ada	Hannah TILLEY
16 Mar 1886	NELSON 22 Nov 1899	29 Dec 1860
20 Jun 1955	2 Feb 1900	24 Jan 1890 w/o William
Mary Eva BODDIE CALHOUN	Corp. John D. NELSON	TILLEY
4 Aug 1890	Co A, 28 LA CSA	Jesse MOORE TILLEY
9 Mar 1958	(no dates)	12 Jul 1825
Henry V. CALHOUN	Rebecca WARREN NELSON	10 Oct 1897
9 Jan 1921	7 Aug 1842	Elizabeth G. TILLEY GORDON
18 Oct 1957 PFC 1103	3 Oct 1916	31 Aug 1843
Base Unit AAF WW II	Alvin Clyde NELSON	8 Dec 1915
Leslie Hugh COOK	2 Feb 1896	Barnabas TILLEY
1 Apr 1924	10 Nov 1950 Pvt 12	14 Jul 1896
1 Feb 1942	BN Inf Repl Tng Camp	19 Jul 1896
James E. BODDIE	WW I	Ben Webster TILLEY
11 May 1888	Cora M. MORRIS	30 Dec 1879
31 Jan 1962	1891-1918	11 Oct 1900
Mary M. BODDIE	Inf s/o M/M Grover C.	Lee TILLEY
30 May 1890	DUKE d 2 Mar 1917	14 Oct 1835
22 May 1971	Callie TILLEY ROPER	27 Aug 1917 s/o
Paul F. TILLEY	19 Jul 1890	Jesse & Jane TILLEY
29 Jul 1872	9 Sep 1973	Mary WHITLEY
8 Nov 1946	Inf of T.H. & Lizzie	(no dates)
Olivia H. TILLEY	LOE d 9 Jul 1913	Drue TILLEY
11 Sep 1884	Glennie HARKNESS	20 May 1876
20 Feb 1973	1895-1893	11 Mar 1901 w/o
Mary Grace T. HAYS	Thelma HARKNESS	Paul TILLEY
25 Aug 1921	1892-1900	Bob C. TILLEY
28 Jan 1971	A. A. (Sonny) HARKNESS	7 Mar 1901
Dallas H. WHITE	1903-1908	13 Mar 1901 s/o
12 Mar 1884	David Baxter DURBIN	P. & D. TILLEY
14 Jun 1941	26 Aug 1892	Henry David TILLEY
Jesse McCOY WHITE	29 Oct 1965	4 May 1873
4 Jul 1885	Ola BODDIE DURBIN	3 Jan 1902
16 Jun 1941	19 Jan 1892	Mary V. WHITE TILLEY
M. E. WHITE	6 Aug 1964	5 Nov 1880
d age 74 y (no dates)	Virginia H. GREET	6 Jan 1901
Wilburn W. HARKNESS	16 Oct 1897	Benjamin W. TILLEY
1869-1935	1 Jul 1945	13 Oct 1843
Betty TILLEY HARKNESS	Eula L. WEBB	1 Jan 1922
1877-1943	1894-1939	Elizabeth B. TILLEY
John (no surname,	Alice Sarah TILLEY	30 Aug 1850
no dates)	7 Jan 1861	6 Jan 1902
Rebecca Louise HANSON	10 Sep 1937	Cora TILLEY ALLISON
18 Sep 1920	William M. TILLEY	21 Mar 1884
23 Oct 1922	Co H, 28 LA Inf	16 Feb 1972
	(no dates)	

Myrtle L. ALLISON  
19 Aug 1913  
10 Sep 1929

Robert Thomas ALLISON  
29 Dec 1877  
3 Mar 1959

John F. WALLINGSFORD  
27 Sep 1873-6 Apr 1912

Edna W. TURPIN  
1880-1957

Arthur P. BODDIE  
21 Oct 1891  
23 Feb 1919

William B. BODDIE  
3 Apr 1871  
7 Oct 1914

Nicholas B. BODDIE  
Co A 7th GA Cavalry  
(no dates)

Miss Lizzie BODDIE  
d 31 Jan 1853 age 72 yrs.

Jesse McCONATHY  
4 Nov 1895  
1 Aug 1897

Lillian McCONATHY  
14 Sep 1897  
25 Oct 1940

John Henry McCONATHY  
7 Jun 1866  
7 Jul 1945

Anna McCONATHY  
3 Apr 1871  
12 Jan 1937

James Henry BODDIE  
6 Aug 1875  
1 Apr 1962

Nancy TILLEY BODDIE  
7 Aug 1875  
20 Dec 1971

John Wesley BODDIE  
28 May 1908  
23 Mar 1937

J. C. BULLARD  
27 Feb 1866  
21 Oct 1941

Sallie MORGAN  
1868-1932

Jarmony B. BULLARD  
Co F 13th AL Inf CSA  
(no dates)

R. C. BULLARD  
18 Aug 1870  
22 Nov 1923

William H. McCONATHY  
25 Oct 1909  
25 Apr 1968

Samuel C. McCONATHY  
25 Jul 1906  
11 Jul 1949

Flodey Edmond McGEE  
11 Mar 1890  
20 Nov 1967  
m 1 Nov 1908  
Lola SIMMONS McGEE

11 Jan 1886  
22 Oct 1962

Curtis E. McGEE  
LA Pfc AAF WWII  
15 May 1924  
21 Jun 1961

D. Emmett CUMMINGS  
1880-1965

Ollie TILLEY CUMMINGS  
1886-1978

James W. ROGERS  
6 Dec 1910  
4 Feb 1968

Thomas A. LOE  
8 Oct 1874  
14 Jan 1943

Elizabeth TILLEY LOE  
2 Sep 1878  
27 Jan 1968

Frank P. McCOY  
Cpl 411 Motor Sup Tn  
WW I 6-Jun 1894  
7 May 1954

Bayne McCOY  
5 Feb 1924  
5 Feb 1924

Billie TILLEY  
16 Jan 1913  
8 Jul 1916 s/o  
Bill & Florence TILLEY

Mary Jane JORDAN  
27 Sep 1855  
15 Dec 1920 w/o  
Green JORDAN

Hester Ann A. BULLARD  
20 Mar 1832  
21 Apr 1892 w/o  
Wm J.R. BULLARD

Susie ALDRIDGE  
d 26 Jan 1899

SUTTON Inf  
1902-1902

Beula BRASELTON  
13 Jul 1877  
26 Oct 1900 w/o  
J. W. BRASELTON

Beula BRASELTON  
20 Oct 1900  
28 Jan 1901 d/o  
W. & B.E. BRASELTON

W. Hiram READHIMER  
26 Feb 1878  
26 May 1918 s/o  
W.W.READHIMER

Audrey Adeal WHITELY  
23 Jan 1917  
7 Oct 1922

Ira Thomas WHITELY  
3 Jul 1913  
28 Mar 1943 (killed  
in North Africa)

Thomas J. WHITELY  
23 Nov 1877  
22 Mar 1959

Martha L. WHITELY  
16 Aug 1880  
1 Jan 1964

Mrs. P. A. LAND  
d 30 Aug 1962 age 63 yr

Rebecca Frances BOND  
22 May 1852  
15 Mar 1913 w/o  
G. A. BOND

W. H. R. (illegible)  
(no dates)

Stephen McKINDRE SUTTON  
1857-1939

Frances Haynes SUTTON  
1860-1936

Sister Carrie Maud  
SUTTON 1888-1922

Inf Sister Willia  
SUTTON Feb 1902  
Jun 1902

Lavell Dewey SUTTON  
22 Sep 1904  
26 Mar 1970

Mary COOK  
27 Dec 1917  
1 Nov 1918 d/o  
M/M N. W. COOK

William J. BOONE  
2 Oct 1898  
19 Nov 1899 s/o  
A. & W. BOONE

Catherine P. STREETMAN  
6 Mar 1910  
18 Oct 1976

Guy STREETMAN  
12 Apr 1896  
28 Jul 1942  
LA Pvt 30 Inf 3 Div

Mariah Elizabeth CUMMINGS  
22 Oct 1868  
30 Apr 1903 d/o  
D.H. & Celia C. CUMMINGS

Thomas J. BOYD  
28 Jun 1905  
14 Oct 1910 s/o  
W.T. & H.A. BOYD

Inf s/o R.W. & Maggie  
BEACH 27 Jun 1906  
28 Jun 1906

Samuel Austin PICKENS  
31 Dec 1906  
11 Dec 1907

Mary E. PICKENS  
10 Sep 1905  
6 Dec 1908

Inf s/o C.L. & S  
HARTLINE 8 Nov 1908  
9 Nov 1908

W. Henry TEASLEY

20 Dec 1885  
29 Jun 1975

Clora J. TEASLEY  
30 Oct 1889  
(no death date)

J. M. DOWNING  
Co K 34 AL Inf CSA  
(no dates)

Charlie L. STREETMAN  
3 Jun 1897  
23 Jan 1967

Eudoxia STREETMAN CHILDS  
30 Nov 1842  
30 Jun 1930

W. Sylvester STREETMAN  
23 May 1855  
3 Oct 1928

Daughter Lela E. STREET-  
6 Oct 1881 MAN  
15 Jan 1970

Katherine LITTON STREET-  
31 Aug 1860 MAN  
9 Mar 1907

Annie S. SIMS  
13 Nov 1854  
23 Mar 1921

C. J. NIXON  
13 May 1849  
8 Oct 1926

Laura NIXON  
13 Feb 1854  
30 Apr 1930

Walter Leon GRAY  
3 Jul 1876  
14 Mar 1928

Alice GRAY  
16 Nov 1876  
26 Dec 1932

Inf (No Name)  
b & d 8 Dec 1896

John Frederick GRAY  
21 Nov 1825  
9 Jul 1904

Ann S. GRAY  
9 Sep 1839  
9 Jun 1916

W. G. GRAY  
8 Aug 1870  
23 Mar 1901

Walter L. GRAY  
31 Jul 1876  
14 Mar 1928

C. Alice GRAY  
16 Nov 1876  
26 Dec 1936

James H. GRAY  
25 Sep 1866  
22 Sep 1935

Betty J. CUMMINGS-  
GERVASE 4 Sep 1924  
6 Aug 1982

Johnnie Alvin SIMMONS  
8 Sep 1895  
18 Sep 1960

Era B. CULVER SIMMONS  
31 May 1895  
14 Sep 1973

Edwin M. TILLEY  
1871-1957

Emma B. TILLEY  
1872-1967

Inez POSEY RATCLIFFE  
9 Jul 1912  
15 Apr 1974

Stanley M. POSEY  
6 Aug 1910  
10 Dec 1936

Ruth C. BYRD POSEY  
5 Jan 1894  
5 Nov 1972

David H. POSEY  
14 Mar 1885  
13 Aug 1941

David Lee McBRIDE  
3 Aug 1941  
7 Apr 1977

Myrtle R. CALHOUN  
3 May 1920  
10 Apr 1980

Theodore C. CALHOUN  
May 1852  
4 Jul 1922

Jamyma INMON 23 Nov 1861 1 Jan 1925	Martha DEAS 1823-1909 Sallie ALFORD 1878-1913	Carolina Virginia TILLEY 21 Feb 1889 8 Sep 1972
Thomas A. CALHOUN 28 Dec 1902 7 Nov 1918	Anna May NELSON 28 Feb 1893 26 Dec 1914 w/o S. J. NELSON	J. B. TILLEY 14 Dec 1886 9 Feb 1953
Inf of T.C. & J.T. CALHOUN 5 Dec 1901 9 Dec 1901	Fred DICK 2 Jan 1907 11 Jan 1907 s/o T.C. & M.E. DICK	Della B. TILLEY 2 Sep 1877 20 Feb 1937
Inf Twins of Glover Lizzie PULLIG (No dates)	Robert Willis COKER 19 Jul 1879 11 Apr 1934	Deck TILLEY 16 Feb 1881 7 Mar 1910
Carrie M. BYRD Jan 28 1888 23 Aug 1910	Baby Elnora A. COKER 15 Jan 1911 2 Feb 1912	A.S. TILLEY (Father) 14 Feb 1840 28 Feb 1922
James W. BYRD 17 Nov 1883 24 Jul 1918	Nina A. COKER 29 May 1880 5 Sep 1961	M.C. TILLEY (Mother) 27 Feb 1844 2 Oct 1909
Hyman BYRD 20 Aug 1907 25 Aug 1910 s/o J.W. & C.M. BYRD	W. T. COKER 5 Jul 1874 8 Sep 1953	Georgia TILLEY 30 Jun 1848 18 Oct 1919 w/o A. S. TILLEY
Donnie CROFFORD BYRD 25 Feb 1910 16 Jan 1911 s/o J.W. & C.M. BYRD	Claude COKER 11 Feb 1905 13 Aug 1905	Theo J. WHITLEY 17 Nov 1874 5 Dec 1948
Virida T. PULLIG 11 Sep 1908 28 Jan 1911 d/o W.G. & Lizzie PULLIG	R. Claude NIXON 13 Feb 1890 9 Dec 1960	William F. NIXON 2 Apr 1882 18 May 1974
Cleveland NIXON 16 Sep 1884 7 Sep 1908 s/o C.J. & L. NIXON	Ethel M. NIXON 5 Oct 1874 (no death date)	Mary WHITE NIXON 2 Jan 1887 21 Jul 1953
C1(?) NIXON 12 Jul 1908 23 Oct 1908	Shelby J. NIXON 17 Apr 1887 13 Feb 1978 Wagr US Army WW I	Son Jack NIXON 8 Nov 1923 17 Nov 1940
Edna NIXON 20 Mar 1907 19 Apr 1912	Will E. LAY 4 May 1888 5 Jan 1939 OK Pvt 168 Inf 42 Div	Edna WARE b & d 4 Aug 1910 d/o M/M Lee WARE
Alice Jewel COKER 6 Oct 1900 5 Aug 1902 d/o J.B. & J.A. COKER	Annie Mae LAY 10 May 1905 9 Sep 1943 d/o M/M J.G. HOLLAND (no dates)	William H. C. JONES 19 Dec 1853 7 Jul 1911
R. M. DEAS 1858-1918 (?)		Georgian SANDERS JONES 11 Nov 1856 15 Apr 1931
		Bess A. TEASLEY 19 Oct 1910 15 Apr 1912

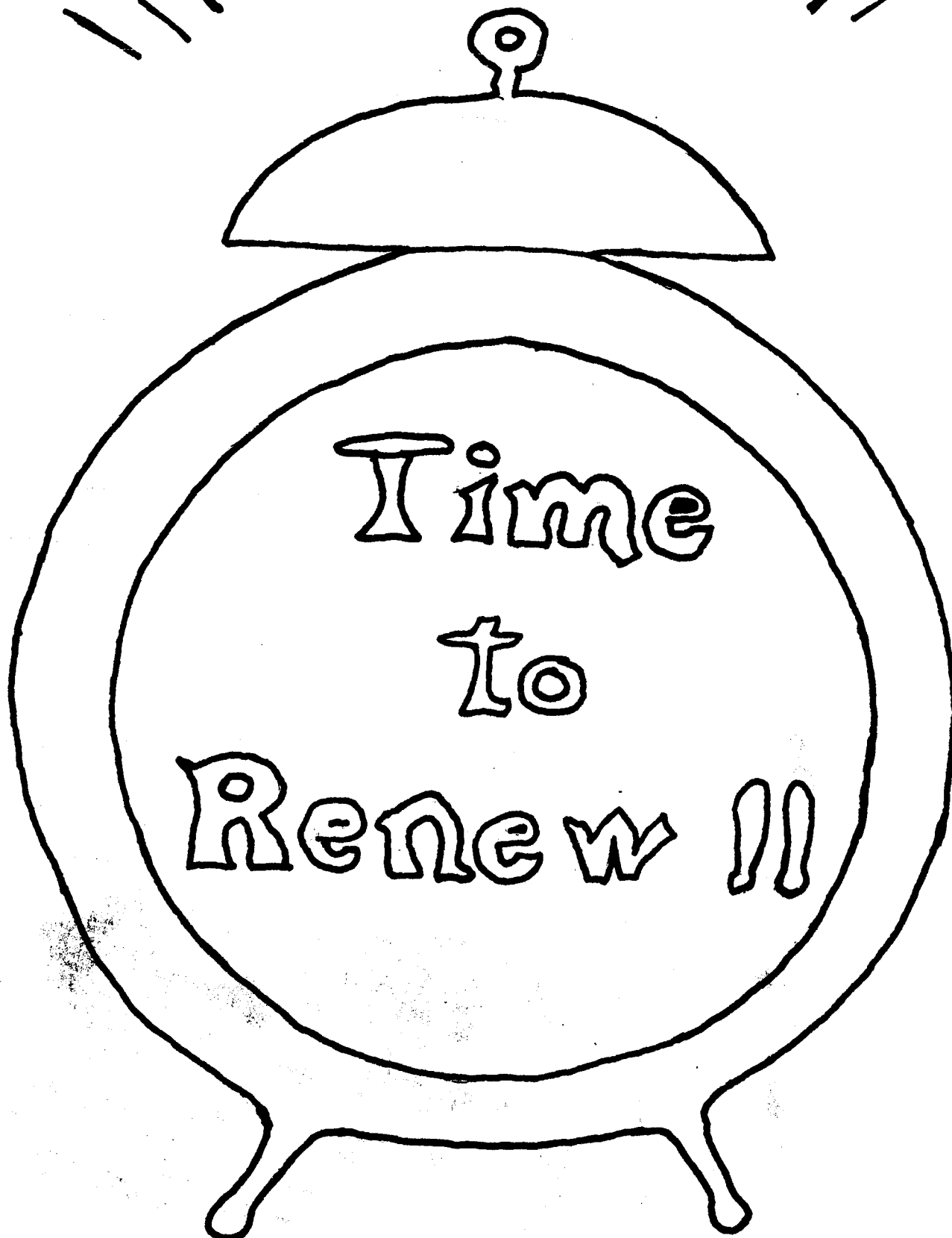
Maxine TEASLEY 5 May 1913 26 Jul 1914 Inf d/o W.H. & Clora TEASLEY d 7 Sep 1918	LA Pvt Mtr Trans Corps Albert F. WHITE 17 Oct 1890 24 Mar 1963 LA Pvt CoI, 83 Inf Inf d/o Clarence & Lillie McGEE 5 Sep 1916 9 Sep 1916 Inf s/o H.W. & S.B. SIMMONS 14 Jul 1912 21 Jul 1912	Gladys UPSHAW McGEE !(!\$_!(&\$ J. Harold McGEE 1933-1936 Mack McGee (no dates) Charlotte T. CUMMINGS (no dates) Malissa J. CRABTREE CUMMINGS 1829-1918 w/o Shadrack P. CUMMINGS
Hardy Lane BOTT 24 Sep 1931 18 Jul 1936 June HOMER DURBIN 14 Jun 1897 15 Mar 1925 AMOST L. DURBIN 12 Mar 1901 1 Apr 1927 Mattie L. DURBIN 6 Sep 1868 5 Mar 1938 J. E. HOOD 15 Jul 1861 19 Feb 1918 Eva WHITE STINNETT 26 Nov 1898 30 Aug 1980 Clyde STINNETT 20 Nov 1897 18 Dec 1977 Maude WHITE JONES 1 Aug 1895 1 Oct 1979 Curtis E. JONES 2 Apr 1896 3 Feb 1931 Claude WHITE 12 Oct 1885 3 Feb 1931 A. S. WHITE 3 Aug 1855 21 Apr 1911 Mary H. WHITE 8 Apr 1866 25 Mar 1941 Minnie W. DAY 10 Oct 1888 7 Dec 1964 Louie M. WHITE 7 Jun 1892 10 Mar 1970	Annie M. SIMMONS 17 Aug 1913 1 Jan 1914 d/o H.W. & S.B. SIMMONS Hodge W. SIMMONS 20 Feb 1888 7 Mar 1957 Susie B. SIMMONS 19 Oct 1894 (no other date) Thomas S. SIMMONS 15 Feb 1857 26 Feb 1931 Missouri M. SIMMONS 30 Nov 1862 17 Jan 1925 Thomas Clayton SIMMONS 20 Apr 1893 9 Nov 1966 Noah McGEE 1897-1933 Mack McGEE 17 Aug 1862 10 Nov 1935 Mollie McGEE 10 Apr 1870 4 Jul 1944 George A. McGEE 19 Jul 1904 17 Jun 1946 Clarence A. McGEE 10 Dec 1887 6 Jun 1955 Lillie S. McGEE 15 Jul 1883 17 Oct 1972	John Artis CUMMINGS 7 Mar 1900 21 Sep 1982 Betsy CUMMINGS 1851-1944 Julia CUMMINGS WARRICK 1857-1952 w/o G. W. WARRICK Eligh Burl MATHEWS 13 Dec 1898 20 Oct 1957 Christine CUMMINGS MATHEWS 18 May 1900 23 Nov 1930 Elige CUMMINGS 6 Jul 1861 28 Jul 1944 Mary Elizabeth WINN CUMMINGS 29 Oct 1871 24 Apr 1912 Myrtle M. CUMMINGS 26 Nov 1893 23 Jun 1978 Wilson (Bud) CUMMINGS 22 Feb 1895 27 Feb 1973 Vennie C. CUMMINGS 9 Oct 1906 2 Aug 1938 Boaz KEITHLEY 1871-1921 Mildred T. KEITHLEY 1871-1954

(To be continued)

# SURNAME INDEX

ADKINS 178, 179	BULLARD 197	CUMMINGS 197, 198,	GARROW 190
AGENT 155	BULLEN 171	200	GAY 178, 179
ALBAN 157	BUNCH 194	CURTIS 154, 170, 190	GERVASE 198
ALDRIDGE 197	BUNKER 170, 171	DAME 189	GIBSON 156
ALFORD 199	BURCH 165	DAMON 171	GILL 178, 179
ALLEN 175, 192	BURKHEAD 192	DAVIS 164, 169, 191	GILMER 151, 152, 157
ALLISON 196, 197	BURNELL 193	DAVISON 192	GLASSON 168
ALLUMS 178, 179	BURTON 173, 174, 175	DAY 200	GODFREY 171
ANDERSON 160	BUTLER 157	de HAVEN 192	GOLDSBY 176
ANGLIN 178, 179	BYRD 191, 198, 199	de la WARR 172	GOODWIN 173, 174
ARNOLD 151, 153, 155,	CAGE 176	de POLIGNAC 180	GORDON 174, 196
156, 170, 171	CALDWELL 174	DEAS 199	GORMAN 181
BABIN 158	CALHDUN 195, 196, 198,	DECKER 164	GOSDIN 195
BAER 152, 153, 157	199	DEXTER 169, 170, 171	GRAHAM 155
BAKER 152, 153	CAMERON 176	DICK 199	GRAND PRE' 193
BAMBURG 178, 179	CAMPBELL 192	DICKSON 157	GRANT 156, 178, 179
BARNES 165, 179, 179	CANTELUPE 172	DIGBY 164	GRAPPE 169
BARNIDGE SR 160	CAPERS 176	DILLARD 165	GRAY 198
BARNIDGE, JR 160	CARAWAY 178, 179	DIXON 154, 169	GREEN 160, 180
BATES 178, 179	CARR 167	DODD 160	GREET 196
BAUGHMAN 163, 165	CARRIGAN 192	DOMINGUEZ 193	GRIFFIN 155, 175, 181
BAYLIS 165	CARSON 165	DOMINGUEZ I 193	GRIFFIN 175
BEACH 199	CARTER 151, 154, 155,	DONAGHEY 165	GRISWOLD 152, 157
BEARD 180	157, 173, 174	DOSS 178, 179	HACKERT 174
BEESON 185, 196, 189	CARY 190	DOSTER 158	HACKETT 173
BELL 176, 178, 179	CANTHON 178, 179	DOWNING 198	HALE 192
BENOIT 157	CHAMPAGNE 158	DUNCAN 192	HALL 192
BENSLYE 172	CHEATHAM 155	DUNMORE 192	HALLBROOK 192
BERGERON 158	CHICKERING 171	DUNN 167, 190	HALLGREN 181
BESSE(Y) 170, 171	CHILDS 198	DURBIN 195, 196	HANNEMAN(N) 159, 160
BEYST 175	CLAIBORNE 167	200	HANSEN 173
BLAYNEY 171	CLARK 170, 171, 192	DURHAM 178, 179	HANSON 196
BLUCK 174	CLARKE 170	DUTTON 165	HARKNESS 196
BODDIE 195, 196, 197	CLARKSON 181	EASTERLING 161	HARRIS 183
BOGER 173	CLUNIES 162	EASTON 194	HARRISON 176, 194
BOISSEAU 152, 157	COFFMAN 194	ELLIOTT 178, 179	HARTLINE 198
BOND 197	COKER 199	ELLWYN 172	HARTMAN 165
BOONE 176, 198	COLBURN 170, 171	EVANS 165, 169	HARWOOD 190
BOOTH 165	COLE 190	EYTON 175	HANKINS 178, 179
BOTT 200	COLFAX 156	FARRIS 165	HAYNES 155, 198
BOWERS 170, 171	CONLEY 178, 179	FAVROT 176	HAYS 196
BOYD 198	COOK 195, 196, 198	FIELDS 182	HEARD 165
BRANDON 174	COPLEY 172	FITCHETT 190	HECTOR 174
BRASELTON 197	COTTLE 170	FITZ-HERBERT 172	HENDERSON 181
BREAU 158	COWESLE 174	FLANNIGAN 178, 179	HENRY 165, 173
BREAZEALE 176	COWISLE 174	FLOWERS 178, 179	HINES 161
BREEDLOVE 178, 179	COX 178, 179	FOLEY 178, 179	HOAG 171
BRIDGES 189	CRABTREE 200	FORMAN 194	HOBART 171
BRINGIES 176	CRAFFORD 190	FRANCIS 165	HOGG 171
BROWN 165, 178, 179	CRAWFORD 155, 174,	FRIERSON 178, 179	HOLLAND 199
191, 195	175	FULTZPLACE 175	HOLLEY 178, 179
BROWNLEE 151, 152, 153,	CROFFORD 199	FURGERSON 178, 179	HOLMES 170, 171
154, 155, 156	CROTWELL 173, 174	GAMBOL 190	HOLSTEAD 173
BUCHANAN 192	CULVER 198	GARCIA 167	HOLTSHAUSER 174

HOMER 200	MAXWELL 183, 185,	PARTRIDGE 170, 171	SHERMAN 190	WARMOUTHER 167
HOOD 200	186, 187, 188,	PAYNE 195	SIMMONS 195, 200	WARREN 171, 196
HUBBARD 178, 179	189	PEARCE 180, 181	SIMS 180, 181, 198	WARRICK 200
HUMBLE 158	McAULEY 155	PEARSON 165	SKIFF 170, 171	WATERS 180, 181
HUNGERFORD 172	McAVOY 181	PEAVEY 189	SLEDGE 182	WATKINS 195
HUNTER 178, 179	McBRIDE 174, 175, 198	PENNINGTON 189	SLUYTER 165	WATSON, JR 190
INNON 199	McCONATHY 197	PEPPER 171	SMEDLEY 153	WAY 189
JACKSON 195	McCOY 180, 181, 195	PERCY 172	SMITH 165, 180, 181	WEBB 196
JAMESON 165	196	PHILLIPS 171	SNODGRASS 194	WEBSTER 196
JASPER 171, 172	McDONALD 161	PICKENS 198	SNOW 170, 171	WEILAND 181
JEFFERSON 191	McDUFF 174	PICKETT 180, 181	SOMMERSALL 169, 170	WEST 169, 170, 171,
JENNINGS 151, 153,	McGEE 195, 197, 200	PLEASANT 165	SPENCE 161	172
181	McGINTY 180, 181, 182	PLIMPTON 170, 171	SPRINGER 158	WHATLEY 181
JONES 178, 179, 199,	McGRIDER 180	PLUNKETT 195	STANARD 191	WHITE 196, 199, 200
200	McKEY 192	PLYMPTON 169	STANCIL 165	WHITELY 197
JORDAN 195, 197	McKINDRE 197	POE 191	STAPLETON 175	WHITEMAN 164
KEARY 180	McLEOD 180, 181	POLAND 195	STEAD 190	WHITLEY 196, 199
KEITHLEY 200	McNEILL 176	POOL 192	STEIN 163, 164, 165	WIGGINS 180, 181
KING 172, 176, 195	McWHIRTER 190	POSEY 1908	168	WILBER 190
KINNEY 155	MERRYMAN 175	POYNER 175	STEVENS 180, 181	WILLIAMS 155, 174,
KINTZING 159, 160	METCALF 170, 171,	PRESBURY 169, 170,	STINNETT 200	180, 181, 183,
161, 181	172	171	STINSON 155, 156	193
KNOLLYS 172	MHOON 189, 194	PRIES 191	STOTHART 180, 181	WILSON 173, 190
KRAUSE 181	MILES 180, 190	PUGH 193	STRANGE 172	WIMBERLY 180, 181
LAFFERNEY 173, 174	MILLER 180, 181	PULLIG 195, 199	STREETMAN 198	WINGFIELD 176
LAND 197	MITCHAM 194	RAMSEY 164	SUTTON 194, 197, 198	WINN 200
LANEY 158	MOORE 196	RANDOL 176	TACKETT 174	WOOD 180, 181
LARSON 194	MORAN 161	RATCLIFFE 198	TANKSLEY 192	WOODS 181
LAWSON 178, 179	MORGAN 169, 182, 197	READHIMER 197	TAUZIN 169	WOODWARD 156
LAY 199	MORRIS 196	REEVES 171	TAYLOR 154, 164, 165	WREN 180, 181
LEAKE 171	MORSE 170, 171, 172,	REICHART 160	TEASLEY 198, 199, 200	WRIGHT 165, 195
LEE 165, 190, 191	180, 181	RINGGOLD 169	TERRAL 165	YOUNG 155, 173, 190
LITTLEPAGE 164	MOUTON 176, 180	ROBINSON 158	THIBODEAUX 158	
LITTON 198	MULLEN 189	ROGERS 170, 197	THOMAS 173, 174	
LOE 195, 196, 197	MURRAY 175	ROMAN 167	TILLEY 196, 197, 198	
LOFTIN 181	NASH 181	ROPER 196	199	
LONG 178, 179	NELSON 196, 199	ROSE 181	TISDALE, SR 160	
LONGINO 178, 179	NETTLES 190	ROUNSAVALL 165	TODD 190	
LOOK 170, 171	NEWELL 160	ROUNTREE 192	TOUPS 158	
LOVE 164, 165	NEWTON 175	RUBLE 192	TURNAGE 165	
MADDEN 171	NIETO 169	RUTHERFORD 192	TURNAGE, SR 165	
MADOCKS 175	NIETTE 169	RUYLE 194	TURPIN 197	
MAJOR 180	NIXON 198, 199	SABBATH 181	UPSHAW 200	
MANEY 190	NORRIS 165	SAGEBUS 153	VANCE 151, 155, 156,	
MANN 181	NOWELL 175	SALTER 172	157	
MANRY 153, 156	NUNNALLY 182	SANDERS 165, 194, 199	VINCENT 170, 171,	
MARCEL 158	O'REILLY 168	SAUNDERS 155	176	
MARKS 155	O'DONNELL 173	SCROGGGS 173, 174, 175	WADLINGTON 165	
MARLAND 192	OGDEN 152, 153, 154,	SCROGGGS II 174	WALKER 180	
MARSTON 180, 181	155	SEABAUGH 189, 194	WALLINGSFORD 197	
MARVIN 195	OLIVER 157, 174, 181	SEALY 164	WALSH 152, 157, 158	
MARX 165	OWENS 182	SELIG 164	WALTER 171	
MATHEWS 200	OWSLEY 173	GEMMES 176	WALTHALL 175	
MATTHEWS 158	PAGE 180, 181	SHELTMAN 194	WARE 199	





**ARK-LA-TEX GENEALOGICAL ASSOCIATION**  
**MEMBERSHIP APPLICATION AND DUES REMITTANCE**  
**P.O. BOX 4462, SHREVEPORT, LA 71134**

Date: \_\_\_\_\_

Please print or Type:

Full Name: \_\_\_\_\_

Address: \_\_\_\_\_ Telephone: \_\_\_\_\_  
                    Street or RFD and No.

City: \_\_\_\_\_ State: \_\_\_\_\_ Zip Code \_\_\_\_\_ - \_\_\_\_\_

Your Family Surnames and States where located: (Four per member)

1. \_\_\_\_\_ 3. \_\_\_\_\_

2. \_\_\_\_\_ 4. \_\_\_\_\_

Membership Fee per calendar year (1 January to 31 December) Individual, \$12.50; Family, \$15.00; Members receive four issues of The Genie each year. Queries are published free. Please complete and attach this form to your check for dues for year \_\_\_\_\_.

New member \_\_\_\_\_ Renewal \_\_\_\_\_

