



VOLUME 36

FIRST QUARTER 2002

NUMBER 1

PUBLISHED QUARTERLY BY

ARK-LA-TEX GENEALOGICAL ASSOCIATION, INC.

P.O. BOX 4462
SHREVEPORT, LOUISIANA 71134-0462

ARK-LA-TEX GENEALOGICAL ASSOCIATION, INC.

P. O. Box 4462
Shreveport, Louisiana 71134-0462

March 13, 2002

Greetings to all our members, friends and those fellow genealogists who read our GENIE at the "exchange sites" through-out the country

We are hoping you have all renewed your 2002 membership in the Ark-La-Tex Genealogical Society. Postage has become a factor of concern. If we do not have a current correct address we must pay to have the GENIE returned to us. Then we pay again to redirect the quarterly to the newest change of address. So PLEASE keep us advised of the address changes.

At our annual meeting we elected two trustees, Harry Lazarus is a member of the Sons of the American Revolution and an old hand at genealogical research. Cindy Millen has been "digging" for about 5 years. We welcome them and encourage them to invigorate the executive board with new ideas.

At our January meeting Mr. Robert Trudeau spoke on the origins of Mardi Gras and had us dancing in the aisles. Mr. Brook Nemacheck was our speaker in February on slave schedules on the plantations in Webster, Claibourne and Bienville Parishes. In March Jeff Girard of N.W. University spoke on the archeological dig at Loggy Bayou.

We will have a seminar on Irish Genealogy April 12 & 13, 2002. The application form is in this GENIE. Come! Learn some new techniques on research

The events of September 11 have shaken us out of our complacency. The Atlantic and Pacific Oceans are no longer a buffer zone - they are no longer a protection from invasion by an enemy! Modern transportation and new technology in aircraft, weapons, electronic devices have erased most barriers. It has made us more aware of our vulnerability, of how fragile we are. Where our roots are buried is an anchor for who we are.

We hope to see you all at our April Irish Seminar.

Sincerely,



Marguerite Loftin
President

THE GENIE

VOLUME 36

FIRST QUARTER 2002

NUMBER 1

TABLE OF CONTENTS

FEATURES

- 1 Bleeding Kansas (1854-1861)
By Herman Weiland
- 4 Important Notice to Members
- 5 Pedigree Chart of Genevieve Fortin
By Harry Lazarus
- 6 Pedigree Chart of Harry Adolph
Lazarus, Jr.
By Harry Lazarus
- 7 My Ancestor's Birth and Marriage
Certificates
By Harry Lazarus
- 8 Le Quiz de Mardi Gras
By Robert Trudeau
- 10 Ancestor Chart of Sharron Bouchard-
McAvoy
By Sharron Bouchard McAvoy
- 11 Ancestor Chart #24 and #25 of Sharron
Bouchard McAvoy
By Sharron Bouchard McAvoy
- 12 Ancestors of Ella Jean Dyke
By Ella Jean Dyke
- 13 Family Group Sheet of Joseph Morgan
and Margaret Proctor
By Ella Jean Dyke
- 14 Family Group Sheet of Andrew Jackson
Dyke and Drucilla Emiline Harper
By Ella Jean Dyke
- 15 Family Group Sheet of Andrew J. Burns
and Elizabeth Watson
By Ella Jean Dyke
- 16 Found: Another Piece of the Puzzle
By Carole Neal
- 19 Ahnentafel Pedigree Chart of Carroll
Heard Goyne, Jr.
By Carroll H. Goyne, Jr.
- 20 Ancestor Chart of Carroll Heard Goyne,
Jr.
By Carroll H. Goyne, Jr.
- 26 National Archives To Release 1930
Census on April 1, 2002
- 27 The Vanceville Tournament
By Dale Jennings
- 31 Star Cemetery, Caddo Parish, Louisiana
By Isabelle Woods
- 39 J. P. Vance and His Succession
By Dale Jennings
- 43 The Dewey Decimal Numbers Benefit You
By Faedra Wills
- 46 Exchange Periodical Review
By Herman Weiland
- 47 Pedigree Chart of Rosalie Berry
By Victor Chambliss Rose
- 48 Oak Ridge Baptist Church Cemetery, Winnfield,
Winn Parish, Louisiana
By Willie Ray Griffin

DEPARTMENTS

- 9 Queries
By Isabelle Woods
- 45 Book Reviews
By Herman Weiland

©2002 Ark-La-Tex Genealogical Association, Inc.,
Shreveport, Louisiana

BOARD OF DIRECTORS (2001)

President	Marguerite J. Loftin	(318) 746-4598
First Vice President	Willie Ray Griffin	(318) 631-6031
Second Vice President	Victor C. Rose	(318) 687-3673
Recording Secretary	Constance Whatley	(318) 861-4336
Corresponding Secretary	Victor C. Rose	(318) 687-3673
Treasurer		
Trustee (2003)	Cynthia D. Millen	(318) 929-2983
Trustee (2003)	Harry A. Lazarus	(318) 798-0111
Trustee (2002)	Betty Jon Gorman	(318) 868-2807
Trustee (2002)	Sharron McAvoy	(318) 868-4723
Past President	Reed C. Mathews	(318) 797-6550

PUBLICATION (THE GENIE)

Editor (Acting)	Willie R. Griffin	
Typing & Computer Editing	Roy L. Henderson	
Book Reviews	Herman Weiland	
Queries, Typing & Indexing	Isabelle Woods	
Printing	Victor C. Rose	
Labels	Michael Broussard	
Bulk Mailing	Carl & Pat Hallgren	
Collating	Constance Whatley, Lillian Hope Veretta & Herman Weiland, Lillian Nash, Betty McCabe and Joan & Harry Lazarus	

ALTGA COMMITTEES

Hospitality	Thelma Sabbath	(318) 635-3637
Publicity	Betty Jon Gorman	(318) 868-2807
Telephone	Betty Kintzing	(318) 221-2988
Finance	Reed C. Mathews	(318) 797-6550
Programs	Marguerite Loftin	(318) 746-4598
Historian	Betty Jon Gorman	(318) 868-2807
Resale	Ruth Mann	
Exchange	Herman Weiland	(318) 746-5811
Education	Victor C. Rose	(318) 687-3673
Web Page	Reed C. Mathews	(318) 797-6550
Seminar	Victor C. Rose	(318) 687-3673

**ARK-LA-TEX GENEALOGICAL ASSOCIATION, INC.
POST OFFICE BOX 4462
SHREVEPORT, LA 71134-0462**

The Ark-La-Tex Genealogical Association, Inc., is a non-profit, non-sectarian, non-political, educational organization dedicated solely to the cause of genealogy. This organization is governed by these purposes:

To collect, preserve, and make available genealogical materials, documents, and records; to encourage an interest in genealogy and to sponsor educational programs for its development; to promote and publicize the City of Shreveport, Louisiana, as a major genealogical research center for genealogists and historians; to cooperate with and assist all other genealogical, historical, and patriotic societies in the furtherance of these purposes; to compile and publish a quarterly composed of records and data related to the science of genealogy.

The Ark-La-Tex Genealogical Association, Inc., meets on the second Saturday of each month from 1:00 p.m. to 4:00 p.m. at the Randle T. Moore Senior Citizen Center, 3101 Fairfield Avenue, Shreveport, Louisiana.

Dues for membership from January 1 through December 31 of each year in the Ark-La-Tex Genealogical Association, Inc., is \$12.50 for an *Individual Membership* and \$15.00 for *Married Couples*.

All members receive four issues of *The Genie*, which is published quarterly.

The Ark-La-Tex Genealogical Association, Inc., will publicize a book of genealogical interest in *The Genie* when submitted by the publisher or an author. These books are then donated to the Genealogy Department of the Broadmoor Branch Library, 1212 Captain Shreve Drive, Shreveport, Louisiana 71105, where they are made available to the public. The Ark-La-Tex Genealogical Association, Inc., periodically donates other genealogical material to this library.

The Ark-La-Tex Genealogical Association, Inc., welcomes queries, which are published free in *The Genie*. A query must be no more than seventy (70) words, either typewritten or legibly handwritten.

The Genie is indexed in the *Periodical Source Index* published by the Allen County Public Library Foundation, Fort Wayne, Indiana.

Correspond with the Ark-La-Tex Genealogical Association, Inc., on the internet by directing your e-mail to aga@softdisk.com, or go to www.softdisk.com/comp/aga for our web page.

Statement of Publication

The Genie is published quarterly with issues in February, May, August and November. Each member receives four issues for each year of membership. All material published in *The Genie* is compiled and contributed by the members. Members and nonmembers of the Ark-La-Tex Genealogy Association may contribute material for publication in *The Genie* (bible records, cemetery listings, diaries, wills, etc.). Such contributions are appreciated and encouraged. Send material for publication to *The Genie* at the Association's mailing address. Material will be used at the discretion of the Editorial Review Board as space permits. We reserve the right to edit and/or condense material as needed. Submission deadlines are the last week before the first day of the month of quarterly publication.

The Association exchanges periodicals with other genealogical and historical organizations publishing data of general interest. We regret that we cannot exchange with limited family organizations. However, send samples of your publications for review. Since many publications possess information of value concerning families contain therein.

When Cemetery Records are submitted, include the name of the contributor, the copier, date copied and cemetery locations (such as road name or number, community, etc.) and also the Section, Township, and Range, if known. When Bible Records are submitted, give date and publisher of the Bible (if known), date copied, name of the contributor, name of present owner and the original owner.

Queries are free and encouraged. Please submit them typed or very plainly written. Space is limited. Please be brief and concise, using no more than 70 words per query. The editor reserves the right to edit or reject queries not suitable for publication.

The Genie cannot be responsible for errors or inaccuracies, but will hasten to publish corrections. Please read the material carefully and advise the Association in writing of corrections.

This publication is indexed in the Periodical Source Index published by the Allen County Public Library Foundation, Ft. Wayne, IN.

Copyright Laws

All who submit material from any source should be aware of copyright restrictions. When applicable, permission to use published material must be in writing and should be included when manuscript is submitted. Source and date of information used should be indicated.

BLEEDING KANSAS - (1854-1861)

Compiled by Herman Weiland

The period from 1854 through 1861 has been referred to in Kansas history as the "Little Civil War", some writers have used the term "Bleeding Kansas" for the same period. The most crucial periods during this time and what I call "Bleeding Kansas" is the years 1856 through 1859 because of the amount of bloodshed during that period. This article is to give the background of the events leading to this period of Kansas history and to include some of the events that happened during this period and afterward as pertains to my Great Grandfather Charles F. W. Leonhardt. Many of the events depicted will be from newspaper reports or from the documents of Leonhardt, who took an active part in this period in Kansas history.

The history of Kansas during this period must be looked at through the issue of "slavery" and the willingness of the Kansas people to fight for the right to have their opinion established as the overriding opinion in determining the states position on the slavery issue.

The Constitution of the United States, Article II, Section 2, Item 3 states that "No person held to service or labor in one State, under the laws thereof, escaping into another shall in consequence of any law or regulation therein, be discharged from such labor, but shall be delivered up on claim of the party to whom such service or labor may be due". Implementing this further was the Fugitive Slave Act of February 12, 1793. It authorized an owner or his agent to secure the arrest of fugitive slaves in any state or property. If a circuit or district judge accepted either oral or written proof or the owners affidavit, the owner might receive a certificate permitting him to return his slave to another state. The act also spelled out penalties for those harboring escaped slaves. In spite of this, the Underground Railroad, beginning in the 1830's, encouraged the slave flight. The United States Supreme Court in 1842 considerably weakened the 1793 Act when it ruled the Federal statute could not compel state officials to assist in recovering runaways. (Prigg v. Pennsylvania)

The Compromise Bill of 1850, submitted in January of 1850 by Henry Clay to the Senate, contained eight compromise resolutions, this brought about one of the greatest clashes in Congress. Mainly it was John Calhoun and Jefferson Davis leading the south against the compromise and Salmon Chase and William Seward leading the antislavery movement for the compromise. One of the eight resolutions was dropped and three were combined to finally make five issues which were approved.

1. California would be admitted with a free-state constitution.
2. The Texas-New Mexico border was established with Texas giving up all her land to the Rio Grande River in return for 10 million dollars.
3. Created the New Mexico and Utah Territories.
4. Abolished slave trade in the District of Columbia.
5. To establish a rigorous fugitive slave law.

To comply with Resolution No. 5, the Fugitive Slave Act of September 18, 1850 provided that United States Commissioners and Courts could issue warrants for the arrest of slaves and the Marshalls were required to execute this warrants. The law even said that where authorities did not respond that a posse of citizens could be used. Anyone aiding in the escape of a slave was subject to a \$1,000 fine and 6 months imprisonment plus civil damages to the slave owner for up to another \$1,000. The act further provided that where there was a fear of rescue of the slave that Federal officers were obligated to accompany the slave to his destination. The Act did not provide for any response from the slave in question during any of the proceedings, therefore, no slave could speak up for himself. This resulted in Negro's who had already received their free papers and may even have been property owners to be picked up and brought before proslavery Judges. Since they could not testify for themselves many were placed right back into slave status in error. The Act further provided that the Judges would receive compensation of \$5.00 for cases where the slave was not returned to the claimant and \$10.00 if he was returned. If there were any doubt, the choice of many Judges was to insure the higher fee for themselves.

The new regulations caused a situation where, if a slave owner needed funds, he made secret arrangements for a slave to escape, followed him after the escape until the slave would stop at someones home and if he received aid or was accepted in any way, the owners hand picked law men would surround the house, recapture the slave and arrest the individual giving aid, making him subject to the penalties of the law. Abuse of this Act was widespread, especially where there was little law or the law was crooked.

Many states did not subscribe to this opinion and passed various laws to lessen the effect in their state.

This brings us to the Kansas-Nebraska Act of 1854. States were allowed entrance to the United States as either Slave or Free. Kansas was being urged to apply for statehood and as a preliminary act the borders between the two territories of Kansas and Nebraska were established. Elections were held in Kansas on March 30, 1855 to determine whether admission would be requested as a Slave State or a Free State.

The adjoining state of Missouri, which was a slave state, sent many of its citizens into Kansas to vote for admission as a slave state. The vote, of course, came in for admission as a slave state. The free state people were in an uproar not only in Kansas but all over the North. A proslavery constitution was written at LeCompton in 1857 and another in 1858. The constitution under which Kansas was finally admitted to the Union was written at Wyandotte (now absorbed into Kansas City) in 1859. It excluded slavery and was approved by Congress. The absence of many Congressmen from the southern states already seceding from the Union made this passage of the Kansas Constitution quite easy.

Border Ruffians from Missouri had attacked Lawrence, Kansas in May 1856. This was the principal Free-State settlement in Kansas. Many areas of the town were looted and burned. The anti-slavery leader, John Brown, struck back and killed five pro-slavery people near Pottawatomie Creek. During the months following many men on both sides were driven from their homes and shot, towns were looted and burned. John Brown's son Frederick was killed in August 1856 during one of these raids.

The "Old Colony Memorial" newspaper of Plymouth, Massachusetts, published on May 12, 1855, has the following: The "Emigrant Aid Society" was procuring subscriptions to the New England Aid Society, which aimed to secure the blessings of Liberty in the territory from the Missouri River to the Rocky Mountains, for more than 3,000 New England men who had already emigrated, wanting Kansas to become a free state. It is said that without the efforts of Mr. Eli Thayer and his Emigrant Aid Society that Kansas would have a slave state.

The same newspaper dated June 28, 1856: Kansas Meeting at Davis Hall - A large and enthusiastic meeting of the citizens of Plymouth, was held at Davis Hall on Friday evening, June 20th. (The article is rather lengthy and several speakers told of the atrocities in Kansas. The meeting closed with several Resolutions. That they were indignant at the outrages committed on Free State Settlers, that the Kansas settlers had their sympathy, encouragement and material aid) The meeting was then dissolved. This was but one of many meetings seeking support for the Kansas settlers and for funds to get new settlers to move to Kansas.

Charles F. W. Leonhardt, the Great Grandfather of Herman Weiland was in attendance at this meeting. He had fought with Louis Kossuth in the Austro/Hungarian Wars of 1848-1849 and was in the Prussian National Guard until 1852. He came to the United States on May 19, 1854 and became a citizen on December 3, 1856. He felt the call to make the trek to Kansas and started taking action to sell the Plymouth Rock Gymnasium, which he owned, and make that trip. He did apply for monetary aid for the trip and received \$50.00. He arrived in Kansas in March of 1857. He was an eloquent speaker and immediately began speaking in support of the free state movement. In June of 1857 he was elected to the Free State legislature of Kansas and his first speech before the Legislature was one which reportedly "took the delegates by storm".

He allied himself with the "Danites", and wasted no time in making his mark in Kansas history. The Kansas State Historical Society has on record that Charles Leonhardt led the group of men who ambushed then Territorial Governor Shannon's guards. A participant in the massacre came forward in 1900, 44 years later, and detailed those events to the authorities stating that it was in the fall of 1856, we know this is in error and if it truly happened was in the early fall of 1857, since it is well documented that Charles Leonhardt was in Plymouth, Massachusetts during the fall of 1856.

The United States government during this time did very little to actually stop the bloodshed in Kansas. President Franklin Pierce appointed Andrew Reeder as the first territorial governor in June 1854. When Reeder objected to the Missourian participation in the "free vs. slave" elections, Pierce removed him and appointed Wilson Shannon in August 1855. Shannon was very pro-slavery and his appointment caused an escalation of guerilla warfare in the territory. Shannon resigned after a year in office and several temporary governors served until John W. Geary was appointed his replacement in September 1857. Geary did try to stop the fighting but received no promise of support from then president-elect James Buchanan who did not believe the Missourians were mostly responsible for the breakdown of law and order in Kansas. Geary resigned the day Buchanan was sworn in to office. James Denver was appointed to replace Geary in February 1858 and served through November 1858. He could not get along with the free staters and even though the Kansas Free State Constitution passed at Lecompton, he tried to convince President Buchanan that the majority of Kansans opposed it. He finally resigned under pressure and Buchanan appointed Samuel Medary to replace him. Medary served until Lincoln became president.

General James H. Lane was sent to Kansas in an attempt to restore order and stop the border raids between Missouri and Kansas. General Lane was looking for "a few good men" and chose Charles Leonhardt as his Adjutant, he then was given the rank of Colonel on September 1, 1857, and was given a Regiment of German soldiers to Command. That assignment did not last long. He was sent back east with Rev. Daniel Foster "lecturing on Kansas affairs" about October 1, 1857. He returned from the east on December 18, 1857 and immediately took part in the Battle of Sugar Mound, Mound City, Kansas on December 19, 1857. He continued to serve with General Lane where needed and also with his new found friend John Brown. A list of John Brown's followers was found in his papers, now at the Kansas State Library, in Topeka.

That portion of Kansas history was over by 1859, John Brown had gone to Cedar City, Iowa in 1858 to train a group of men for a special project which we now know was the raid on Harpers Ferry, near Charles Town, Virginia (now West Virginia).. Charles Leonhardt it is thought, accompanied him to Iowa and the training area was set up on the farm of Griffith Lewis. Griffith and his family had known the Brown's when they both lived in Ohio. Griffith was a Quaker but had been actively involved in the Under Ground Railroad as a Station Master in Ohio and in Iowa.

Charles writes in his memoirs that John discussed his plans for the raid on Harpers Ferry with Griffith and that Griffith tried to talk him out of it. John Brown, when he knew he was leaving for Virginia, left his saddle with Griffith Lewis, this saddle is now in the Kansas State Museum as a gift passed through by Griffith's daughter Esther. John Brown and his men departed for Virginia separately so as not to arouse much interest with a rendezvous to be made there by a certain date, the majority of his men had arrived earlier than expected and the anticipated date for the raid on Harpers Ferry was moved up by about 10 days.

Some have tried to state that Charles Leonhardt was at the Harpers Ferry raid on October 16, 1859 or shortly after but we know this was not likely to have happened.

Charles Leonhardt appears then in Cincinnati, Ohio where he was enrolled in the University of Cincinnati Law School for the 1859-60 school term and graduated in April 1860. He received a Notary Public License on October 15, 1859, in Cincinnati, so we know he could not have been at Harpers Ferry the following day. Upon graduation from the law school he returned to Kansas and took the "Last Train" of slaves to Cedar City, Iowa. He set up a law practice there in Cedar City and then married Esther Lewis, the daughter of Griffith Lewis on April 18, 1861. After a short period of service in the Civil War

1861-2 the family moved back to his beloved Kansas where he practiced law in several locations and then was a City Judge in Louisville. He was placed on the Kansas Historical Commission in 1879 and served in that capacity until shortly before his death at Paola, Kansas in 1884. He had many manuscripts of the speeches he made while stumping for support of the Free-State movement and tried to find a publisher for them but to no avail. Most of these are now in the Kansas State Library in Topeka. He made every effort to preserve that part of Kansas History known as "Bleeding Kansas".

The children of John Brown and Griffith Lewis continued to maintain a close relationship through the years. When John's son Owen Brown died in Pasadena, California two of Griffith's sons who were my Great Uncles, Daniel Wood Lewis and Emlen Lewis, both made presentations at the Memorial Service. The Pasadena Daily News, January 31, 1898, contains the full text of all the speeches made at that service.

Those of you with Kansas "roots" may want to join the Territory of Kansas Heritage Alliance, P.O. Box 145, Ottawa, Kansas 66067. You may visit their website at <http://www.territorialkansas.org> for further information about the Alliance and the different projects they are working on.

Important Notice To Members

The Board of Directors has approved, *to charge* members when the cost of mailing a GENIE to them, must be made at the regular postal rate.

Members who move and do not send to the Association a change of address and the Post Office returns their GENIE to the Association, will be charged \$1.50 for the return postage. If the GENIE is to be re-mailed to a member, there will be an additional \$1.50 for the re-mailing. Members may however, pick-up their Genie at the next regular meeting without any charges.

Members who renew their membership AFTER the first quarter GENIE has been mailed will be charged an additional \$2.00 to have this issue mailed to them at the regular postal rate. Members may however, pick-up their first quarter issue at the next regular meeting without any charges.

Always remember to advise promptly of address changes and always renew on time (December). Neither of these charges will then apply to you.

Records of: Harry Lazarus
7709 Tampa Way
Shreveport
LA
USA

16 Jan 2002

		16 Simon FORTIN----- RIN: 245 BIRTH: 1574 StCosmedeVair, Sarth, Fran	
	8 Julien FORTIN----- RIN: 109 BIRTH: Abt 1600 StCosme, DeVa, Sart, Fran	17 ----- RIN: BIRTH:	
4 Julien For BELLEFONTAIN----- RIN: 105 BIRTH: 1630 deNDLevevecheduManis MARR: 11 Nov 1652 --60 Quebec, Quebec, Canada	DEATH: 30 Jan 1678/1679 Canada	18 Gervaid LAVVE----- RIN: 246 BIRTH:	
	9 Marie LAVIE----- RIN: 110 BIRTH:	19 ----- RIN: BIRTH:	
2 Pierre Julian FORTIN----- RIN: 103 BIRTH: 24 Mar 1666/1667 Riviere Ovelle MARR: 4 Jul 1697 --59 DEATH:	DEATH:	20 GUILLAME GAMACHE----- RIN: 250 BIRTH: ca 1574 France	
	5 Genevieve Gamac LAMARRE----- RIN: 106 BIRTH: 1635 Sailli, Chat, Beau, Fran DEATH: 5 Nov 1709 L'islet, Quebec, Canada	10 Nicolas GAMACHE----- RIN: 247 BIRTH: 1594 Stilier, Chartes, France	21 Rene HUAM----- RIN: 251 BIRTH: caca 1576 France
	11 Jacqueline Cadott CADOT----- RIN: 248 BIRTH:	DEATH: 1635 Ile De, France	22 Jean CADOT----- RIN: 252 BIRTH: ca1580 France
1 Genevieve FORTIN----- RIN: 207 BIRTH: MARR: 4 Jul 1697 --51 DEATH: SPOUSE(S): Louis LANGLIER	DEATH:	23 ----- RIN: BIRTH:	24 ----- RIN: BIRTH:
	6 Pierre HUDONDITBRAULIEU----- RIN: 107 BIRTH: 13 Jan 1648/1649 MARR: --61 DEATH: 25 Apr 1710	12 Jean de HUDON----- RIN: 111 BIRTH: MARR: --64 DEATH:	25 ----- RIN: BIRTH:
3 Marie Gertrude HUDON----- RIN: 104 BIRTH: 8 Jul 1668 Quebec DEATH:	13 Francoise DURAND----- RIN: 114 BIRTH: DEATH:	26 ----- RIN: BIRTH:	27 ----- RIN: BIRTH:
	7 Marie GOBIEL----- RIN: 108 BIRTH: 1655 DEATH: 26 Nov 1736	14 Jean GOBELL----- RIN: 115 BIRTH: MARR: --65 DEATH:	28 ----- RIN: BIRTH:
	15 Jeanne GUIET----- RIN: 116 BIRTH: DEATH:	29 ----- RIN: BIRTH:	30 ----- RIN: BIRTH:
		31 ----- RIN: BIRTH:	

Records of: Harry Lazarus
7709 Tampa Way
Shreveport
LA
USA

1 Harry Adolph Jr. LAZARUS----- RIN: 1 BIRTH: 27 Mar 1920 StLouis, StLouis, Missouri MARR: 25 Mar 1948 --1 Shreveport, Caddo, Louisiana DEATH:	2 Harry Adolph LAZARUS----- RIN: 159 BIRTH: 26 Jun 1896 NewOrleans, Orle, Loui, USA MARR: 5 Jul 1919 --2 StLouis, StLouis, Missouri DEATH: 10 May 1972 Shreveport, Cadd, Loui, USA	3 Edna Mary WODIKER----- RIN: 170 BIRTH: 19 Sep 1900 StLouis, StLouis, Miss, USA DEATH: 1 Mar 1988 Shreveport, Cadd, Loui, USA	4 Solomon LAZARUS----- RIN: 35 BIRTH: 3 Oct 1851 Whitechapel, Middl, Engl MARR: 16 Jun 1875 --27 Williamsburg, LI, KC, NYU DEATH: 15 Jul 1926 Brooklyn, KingsCount, NY	5 Flora PYKE----- RIN: 46 BIRTH: 1854 Manchester, Bristo, Engl DEATH: 22 Dec 1899 NewOrle, Orle, Loui, USA	6 Matthew Charles WODIKER----- RIN: 192 BIRTH: 24 Feb 1873 StLouis, StLou, Miss, USA MARR: 5 Dec 1895 --3 StLouis, StLou, Miss, USA DEATH: 18 Aug 1946 CapeGirade, CG, Miss, USA	7 Mary Edna CADRAN----- RIN: 203 BIRTH: 10 Sep 1876 StLouis, StLou, Miss, USA DEATH: 9 Mar 1965 Houston, Harr, Texa, USA	8 Isaac LAZARUS----- RIN: 124 BIRTH: Abt 1831 England MARR: Abt 1850 --28 England DEATH: Aft 1850 England	9 Amelia SIMMONS----- RIN: 129 BIRTH: Abt 1831 England DEATH: Aft 1851 England	10 George PYKE----- RIN: 140 BIRTH: Abt 1822 England? MARR: 27 Apr 1849 --35 Bristol, England? DEATH: 6 Mar 1885 Brooklyn, New York	11 Sarah EMDEN----- RIN: 141 BIRTH: Abt 1830 England? DEATH: 19 Apr 1887	12 Wenceslaus VOTLUCKA----- RIN: 142 BIRTH: Abt 1850 Bohemia, Czechoslovak MARR: 1872 --78 St Louis, Missouri DEATH: Aft 1910 St Louis, Missouri	13 Caroline POLIVKA----- RIN: 143 BIRTH: Abt 1852 St Louis, Missouri DEATH: Aft 1881 St Louis, Missouri	14 Julius (Jules) CADRAN----- RIN: 130 BIRTH: 15 Jul 1845 StGenevieve, Missour, USA MARR: 14 Aug 1867 --73 StGenevieve, Missou, USA DEATH: 9 Oct 1918 JeffersonCity, Miss, USA	15 Mary Louise GOVORO----- RIN: 131 BIRTH: 11 Mar 1847 StGenevieve, Missou, USA DEATH: 28 Jul 1922 StLouis, StLou, Miss, USA	16 ----- RIN: BIRTH:	17 ----- RIN: BIRTH:	18 ----- RIN: BIRTH:	19 ----- RIN: BIRTH:	20 ----- RIN: BIRTH:	21 ----- RIN: BIRTH:	22 ----- RIN: BIRTH:	23 ----- RIN: BIRTH:	24 Joseph VOTLUCKA----- RIN: 176 BIRTH: Abt 1825 Hrozanek, Bohemia	25 ----- RIN: BIRTH:	26 Joseph POLIVKA----- RIN: 144 BIRTH: Bef 1830 Bohemia, Czechoslovaki	27 Barbara----- RIN: 145 BIRTH: Abt 1830	28 Lawrence CADRAN----- RIN: 146 BIRTH: Abt 1825	29 Marie GRENIER----- RIN: 147 BIRTH: Abt 1825	30 Antoine Anton GOVROGOVORO)--- RIN: 138 BIRTH: 26 Dec 1821 St Genevieve, Missouri	31 Marie Louise LAROSE----- RIN: 139 BIRTH: 24 Nov 1823 St Genevieve, Missouri
--	---	---	---	---	---	---	--	---	--	--	---	--	---	---	----------------------------	----------------------------	----------------------------	----------------------------	----------------------------	----------------------------	----------------------------	----------------------------	---	----------------------------	---	--	--	--	--	---

My Ancestor's Birth and Marriage Certificates
Submitted by Harry Lazarus

Certificate of Baptism

✠

St. John Nepomuk Church
1625 SOUTH 11th STREET
ST. LOUIS, MISSOURI 63104

This is to Certify

That Matthew Charles Votlucka
Child of Wenceslaus Votlucka
and Caroline Polivka
born in St. Louis, Mo.
on the 24th day of February 1873
was **Baptized**
on the 2nd day of March 1873
According to the Rite of the Roman Catholic Church
by the Rev. Joseph Hesson
the Sponsors being Charles Luda
Philomena Luda
as appears from the Baptismal Register of this Church.
Dated Aug. 18, 1992.

Joseph Hesson
Pastor

Certificate of Marriage

✠

Church of
St. John Nepomuk
St. Louis, Mo.

This is to Certify

That Wenceslaus Votlucka
and Caroline Polivka
were lawfully **Married**
on the 23 day of January 1872
According to the Rite of the Roman Catholic Church
and in conformity with the laws of the State of
Missouri, Rev. Joseph Hesson
officiating, in the presence of Frank Polivka
and Livron Gulina witnesses, as appears
from the Marriage Register of this Church.
Dated Sept. 1, 1987

Joseph Hesson
Pastor

No. 4M12

Matthew Charles Votlucka (grand father)
Wenceslaus Votlucka (great grand father)
Caroline Polivka (great grand mother)
Joseph Votlucka (great-great grand father)
Joseph Polivka (great-great grand father)

Wenceslaus Votlucka was a graterfurniser of St. Louis, Missouri; he was the son of Joseph Votlucka and a peasant of Bohemia.

Caroline Polivka was daughter of Joseph Polivka and a workman in St. Louis, Missouri.

My grand father who later changed his name to Wodiker because my grand mother would not marry a Votlucka.

The church was the first Czechoslovakia church west of the Mississippi.

Le Quiz de Mardi Gras

Robert Trudeau

- 1) Rex is the best-known krewe of New Orleans' Mardi Gras but it is not quite the oldest. That distinction belongs to the Mistick Krewe of a) Comus b) Proteus c) Zulu.
- 2) The horse-mounted men of the Cajun *courir de Mardi Gras* go to their neighbor's farms to entertain and request a) the loan of their first-born b) a round of beers c) a contribution to the gumbo d) a kiss from each of the ladies present.
- 3) The country with the world's longest Carnival season; it begins in November:
a) Germany b) Brazil c) Trinidad d) France.
- 4) This nation features a women's parade during which the ladies may go into the crowd to grab men for hugs and kisses: a) Brazil b) Belgium c) Germany d) Italy.
- 5) Costumed riders throw oranges - hundreds of them - at the crowd according to ancient custom in the town of Binche, in ____ . a) Germany b) Belgium c) Trinidad.
- 6) Carnival costumes are frequently so large that they must be supported by metal tubing and outrigger wheels in this country: a) Trinidad b) Brazil c) Germany.
- 7) The New Orleans krewe with the biggest floats and most throws: a) Rex b) Bacchus c) Zulu d) Mid-City.
- 8) New Orleans has revived the celebration accompanying the arrival of Rex at the riverfront on the Monday before Fat Tuesday. That day is called a) *Lundi Gras* b) *Jeudi Gras* c) *Dimanche Gras* d) *Vendredi Gras*.
- 9) In England Fat Tuesday is known as a) Clove Tuesday b) Shrove Tuesday c) Mauve Tuesday.
- 10) The largest single Carnival gathering in the world: a) New Orleans b) Rio de Janeiro, Brazil c) Munich, Germany.
- 11) The Creole Wild West, the Wild Tchoupitoulas and the Golden Eagle Hunters are tribes of New Orleans' Mardi Gras Indians. One of their traditional chants is "Two-way Pocky Way!" which means, in *patois* : a) "Get out of the way or we'll kill you" b) Come on, sister, show us your stuff" c) Man, I done spent way too much money on this costume."
- 12) This city still features some night parades illuminated by men who dance as they carry *flambeaux*, or pole-mounted torches: a) Cologne, Germany b) Paris, France c) New Orleans.



Don't the second line!

Want more explanation or a razz-matazz performance on the history of Mardi Gras? Call Robert at 318-861-6809. The answers: 1.a 2.c 3.a 4.c 5.b 6.a 7.b 8.a 9.b 10.b 11.a 12.c

Queries

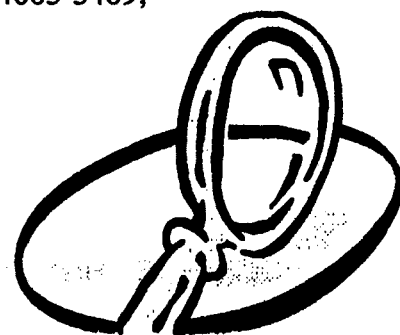
By Isabelle Woods

COTTRELL HART MADDUX MADDUX Seek information (i.e., parents, death date, burial site) on Thomas M. MADDUX d 1881-1890 (aka T. M. MADDUX), who married 5 Jan 1875 Letha Ann HART; children: Rhoda Annie, James Thomas, and Joseph Marmaduke MADDUX. Thomas allegedly left home in a snow storm to help others and never returned. Thomas is in the 1881/1883 Shreveport, LA, City Directory. Contact: Gale A. COTTRELL, 29 Green Lake Drive, Orchard Park, NY 14127.

COTTRELL CRAIN CURRY HART MADDUX MADDUX Who are the parents (father: HART b NC; mother: CURRY b SC) of Letha Ann HART b 19 August 1843, MS(?) Letha married 29 Feb 1872 spouse #1 William F. CRAIN in Shreveport, LA and spouse #2 Thomas M. MADDUX (aka T. W. MADDUX) on 5 Jan 1875. Letha is listed in the 1890 Special Census, Bossier City, LA, as a widow of a soldier. In the 1892 City Directory, Shreveport, LA, she is listed as "MADDUX, Letha A., wid of T. M., r Egan nr Jordan." In Letha's first marriage, B.C. HART co-signed the marriage bond. What was B. C. HART's relationship to Letha? Contact: Gale A. COTTRELL, 29 Green Lake Drive, Orchard Park, NY 14127.

BRAZEAL GEAREN GEREN HORTMAN McCARTNEY Seek information on John GEREN (GEAREN) b ca 1785-1790, TN or NC, and his wives. What is the place of birth and surname of wife #1 Mildred b 31 Dec 1778, TN? What happened to the children from the union of John and wife #2 Mary Elizabeth BRAZEAL b ca 1822, AL. Mary once lived in Homer, LA, and married Adam HORTMAN after John died. Contact: Bess GEAREN McCARTNEY, 4917 Patricia Drive, Eureka, CA 95503-6426.

BOUNDS MADISON POCKRUS Researching Lidia P. POCKRUS who married 11 Nov 1888 Jesse A. BOUNDS in Bossier Parish, LA; 2 children: Allie and Jody BOUNDS. Who are Lidia's parents? Is POCKRUS her maiden name? To where did she and Jesse move? Who are Jesse's parents. Cannot locate them in Louisiana or Arkansas in 1900. I have discovered that my ancestor, Jesse BOUNDS, is not the person of the same name who is the son of a William MADISON BOUNDS who died in 1873. Contact: Helene POCKRUS, 6344 West 10890 North, Highland, Utah 84003-3409; E-mail: helenepockrus@earthlink.net.



Name of Compiler SHARRON MCAVOY
 Address 3782 RICHMOND
 City, State SHREVEPORT, LA 71104
 Date _____

Ancestor Chart

Person No. 1 on this chart is the same person as No. _____ on chart No. _____

Chart No. _____

4 KARL KENDALL MCAVOY
 (Father of No. 3)
 b. 6 August 1886
 p.b. Clayton (Jefferson) NY
 m. 16 January 1909 Clayton, NY
 d. 25 December 1957
 p.d. Ogdensburg, NY

2 AVERY "Mac" MILTON MCAVOY
 (Father of No. 1)
 b. 16 April 1919
 p.b. Clayton (Jefferson) NY (Grindstone IS)
 m. 2 September 1944 (Forrest) MS
 d. 20 August 1994
 p.d. Marshall (Harrison) TX

5 LEONA SOPHIA FITZGERALD
 (Mother of No. 3)
 b. 21 August 1889
 p.b. Clayton (Jefferson) NY
 d. 19 January 1981
 p.d. Etkon (Cecil) MD

1 SHARRON BOUCHARD MCAVOY
 b.
 p.b. Shreveport (Caddo) LA
 m.
 d.
 p.d.

8 ROBERT SAMUEL BOUCHARD
 (Father of No. 3)
 b. 4 February 1895
 p.b. St. Elmo (Mobile) AL
 m. 20 July 1920 Meridian, MS
 d. 18 January 1968
 p.d. Shreveport (Caddo) LA

3 FRANCES LORRAINE BOUCHARD
 (Mother of No. 1)
 b.
 p.b. Shreveport (Caddo) LA
 d.
 p.d.

7 SARAH ELIZABETH "Sadie" JOLLY
 (Mother of No. 3)
 b. 18 March 1898
 p.b. Bethel Comm. (Lauderdale) MS
 d. 2 April 1993
 p.d. Uncertain (Harrison) TX

8 JOSIAH "Sy" WILLIAM MCAVOY. (Capt.)
 (Father of No. 4)
 b. 19 August 1862 (Stone) 1864
 p.b. Landsdowne ONT. Canada
 p.b. Gretna Island
 m. 14 February 1881
 d. 25 March 1926
 p.d. Clayton (Jefferson) NY

9 IDA MAY KENDALL
 (Mother of No. 4)
 b. 16 May 1854 (Stone) 1856
 p.b. Clayton (Jefferson) NY
 d. 25 May 1945
 p.d. Clayton (Jefferson) NY

10 JAMES "Jim" PATRICK FITZGERALD
 (Father of No. 5)
 b. 20 May 1863
 p.b. Clayton (Jefferson) NY
 m. 22 February 1887
 d. 19 October 1903
 p.d. Clayton (Jefferson) NY

11 CARRIE EUGENIA GARNSEY
 (Mother of No. 5)
 b. 20 March 1867
 p.b. Clayton (Jeff) NY Grindstone
 d. 3 April 1949
 p.d. Watertown (Jefferson) NY

12 JOHN ROBERT LEE BOUCHARD
 (Robert Edward)
 (Father of No. 6)
 b. 25 January 1865
 p.b. New Orleans (Orleans) LA
 m. Ca. 1892
 d. 7 January 1923
 p.d. St. Elmo (Mobile) AL
 ANNA BELLE "GRAN" WRIGHT

13 ANNABELLE "GRAN" WRIGHT
 (Mother of No. 6)
 b. 8 December 1872
 p.b. Chillicothe (Lauderdale) MS
 d. 1 August 1970
 p.d. Mobile (Mobile) AL

14 JOHN EADS JOLLY "Papa"
 (Father of No. 7)
 b. 17 December 1869
 p.b. Union MS
 m. 25 March 1894 (2) Lauderdale MS
 d. 10 July 1943
 p.d. Meridian (Lauderdale) MS

15 SARAH ELIZABETH "Betty" JOHNSON
 (Mother of No. 7)
 b. 7 December 1871
 p.b. Suqualena (Lauderdale) MS
 d. 2 June 1968
 p.d. Meridian (Lauderdale) MS

16 CORNELIUS MCAVOY
 (Father of No. 8)
 b. 1836 Gan.
 m. Ontario, Canada
 d. 6 April 1912 Gan.

17 PERMILLA VANCONANT
 (Mother of No. 8)
 b. 28 May 1842
 m. CAH:
 d. 21 May 1925

18 ALDRIDGE S. KENDALL
 (Father of No. 9)
 b. 1811 NY.
 m. 1850 (2)
 d. 31 Oct. 1892 NY

19 ZUBA GOTHAM
 (Mother of No. 9)
 b. 16 May 1835
 d. 1 Jan. 1914 NY

20 MICHAEL FITZGERALD
 (Father of No. 10)
 b. 1844 Ire.
 m. 24 August 1897 NY

21 SARAH DUFORD
 (Mother of No. 10)
 b. 20 Oct 1843
 d. 25 April 1922 NY

22 GEORGE F. GARNSEY
 (Father of No. 11)
 b. 12 May 1845
 m. CA 1866 NY
 d. 10 Nov. 1917 NY

23 AMORETTA CHASE
 (Mother of No. 11)
 b. 16 May 1849 NY
 d. 24 Dec. 1935 NY

24 ADOLPHE BOUCHARD
 (Father of No. 12)
 b. Nov. 1828
 m. 9 May 1850 LA
 d. 23 Sept. 1904 AL

25 MARIE AGNESSE BOYER
 (Mother of No. 12)
 b. 19 Feb. 1834
 d. 1891 AL

26 JOHN MILTON WRIGHT
 (Father of No. 13)
 b. 6 Nov. 1844
 m. 18 Oct. 1866 OH
 d. 26 Oct. 1925 AL

27 MARY ALICE WILSON
 (Mother of No. 13)
 b. 1 April 1847 PA
 d. 5 April 1898 AL

28 WILLIAM EADES JOLLY
 (Father of No. 14)
 b. 14 Dec. 1817
 m. 3 Feb. 1864 (2) GA
 d. 15 March 1890 MS

29 MARY ANN RODGERS
 (Mother of No. 14)
 b. 17 March 1828
 d. 18 July 1898 MS

30 STERLING JOHNSON
 (Father of No. 15)
 b. 19 May 1845
 m. 25 Dec. 1870 MS
 d. 30 July 1916 MS

31 SARAH WINNIE GILES
 (Mother of No. 15)
 b. 22 March 1851
 d. 28 Feb. 1943 MS

Marriage License of Adolphe Bouchard and Marie Agnesse Boyer
 From Microfilm VED 678 1848-55 Third Justice of the Peace
 Parish of Orleans Here Euzelian Gautreaux, Brother-in-Law
 and Tutor gives consent to the marriage 8May 1850

Entry from Sacramental Records Archdiocese of New Orleans
 Marriage Certificate 9May 1850

Handwritten notes and signatures:
 The above named Adolphe Bouchard has applied to
 CONSTANTIN R. BEVELLEY, Third Justice of the Peace for the Parish of Orleans,
 and has obtained from him a License to marry with Marie Agnesse Boyer on the 8th day of May 1850.
 The conditions of the above obligation is such, that in every publication from this
 day of 1850 the above obligation shall be null and void if a child is born to the said Adolphe
 and Marie Agnesse Boyer, at the City of New Orleans, this 9th
 day of May 1850.
 Euzelian Gautreaux
 Brother-in-Law and Tutor
 Marie Agnesse Boyer
 Adolphe Bouchard
 1900
 1850

Certificate of Marriage

ARCHDIOCESE OF NEW ORLEANS
 ARCHIVES
 1100 Chartres Street
 New Orleans, Louisiana 70116

This is to Certify

This Adolphe Bouchard
 Son of Samuel Bouchard & Marie Desaint
 and Marie Agnesse Boyer
 Daughter of Pierre Boyer & Josephine
 were lawfully Married
 on the 9th day of May 1850
 According to the Rite of the Roman Catholic Church
 By G. L. Augulancy, officiated
 in the presence of Louis Bousjard (or?),
 and Isaac Secree elder, Witnesses.
 A true and exact extract from the Marriage Registers of
 St. Augustine Church
 which are now in the Archives of the Archbishop of New Orleans
 Vol. 1-1842-1857, p. 92, Art. N. —

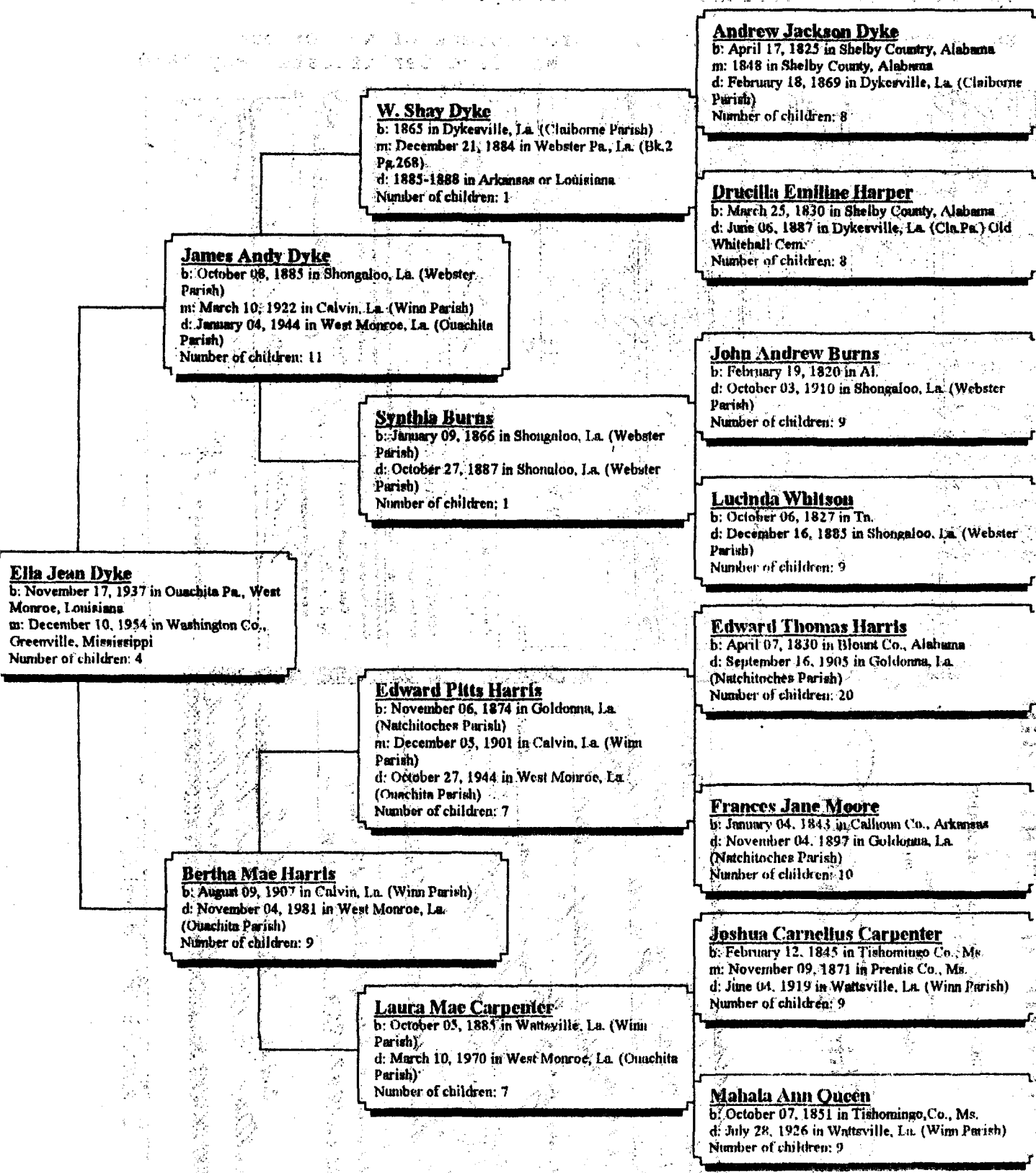
Certified by Maxime S. Lawrence
 Dec. 23, 1991 Assistant Archivist
 for Sacramental Records

Ancestors of Ella Jean Dyke

Parents

Grandparents

Great-Grandparents



James Andy Dyke
 b: October 08, 1883 in Shongaloo, La. (Webster Parish)
 m: March 10, 1922 in Calvin, La. (Winn Parish)
 d: January 04, 1944 in West Monroe, La. (Ouachita Parish)
 Number of children: 11

W. Shay Dyke
 b: 1865 in Dykeville, La. (Claiborne Parish)
 m: December 21, 1884 in Webster Pa., La. (Bk. 2 Pg. 268)
 d: 1885-1888 in Arkansas or Louisiana
 Number of children: 1

Andrew Jackson Dyke
 b: April 17, 1825 in Shelby County, Alabama
 m: 1848 in Shelby County, Alabama
 d: February 18, 1869 in Dykeville, La. (Claiborne Parish)
 Number of children: 8

Drucilla Emiline Harper
 b: March 25, 1830 in Shelby County, Alabama
 d: June 06, 1887 in Dykeville, La. (Cla. Pa.) Old Whitehall Cem.
 Number of children: 8

John Andrew Burns
 b: February 19, 1820 in Al.
 d: October 03, 1910 in Shongaloo, La. (Webster Parish)
 Number of children: 9

Synthia Burns
 b: January 09, 1866 in Shongaloo, La. (Webster Parish)
 d: October 27, 1887 in Shonuloo, La. (Webster Parish)
 Number of children: 1

Lucinda Whitson
 b: October 06, 1827 in Tn.
 d: December 16, 1883 in Shongaloo, La. (Webster Parish)
 Number of children: 9

Ella Jean Dyke
 b: November 17, 1937 in Ouachita Pa., West Monroe, Louisiana
 m: December 10, 1954 in Washington Co., Greenville, Mississippi
 Number of children: 4

Edward Pitts Harris
 b: November 06, 1874 in Goldonna, La. (Natchitoches Parish)
 m: December 03, 1901 in Calvin, La. (Winn Parish)
 d: October 27, 1944 in West Monroe, La. (Ouachita Parish)
 Number of children: 7

Edward Thomas Harris
 b: April 07, 1830 in Blount Co., Alabama
 d: September 16, 1903 in Goldonna, La. (Natchitoches Parish)
 Number of children: 20

Bertha Mae Harris
 b: August 09, 1907 in Calvin, La. (Winn Parish)
 d: November 04, 1981 in West Monroe, La. (Ouachita Parish)
 Number of children: 9

Frances Jane Moore
 b: January 04, 1843 in Calhoun Co., Arkansas
 d: November 04, 1897 in Goldonna, La. (Natchitoches Parish)
 Number of children: 10

Laura Mae Carpenter
 b: October 03, 1885 in Wattsville, La. (Winn Parish)
 d: March 10, 1970 in West Monroe, La. (Ouachita Parish)
 Number of children: 7

Joshua Carnellus Carpenter
 b: February 12, 1845 in Tishomingo Co., Ms.
 m: November 09, 1871 in Prentiss Co., Ms.
 d: June 04, 1919 in Wattsville, La. (Winn Parish)
 Number of children: 9

Mahala Ann Queen
 b: October 07, 1851 in Tishomingo, Co., Ms.
 d: July 28, 1926 in Wattsville, La. (Winn Parish)
 Number of children: 9

Family Group Sheet

Husband: Andrew J. Burns

Born: 1800

Died: September 27, 1840

in: Scotland

in: Shongaloo, La. (Webster Parish)

Wife: Elizabeth Watson

Born: January 12, 1797

Died: September 12, 1885

in: Scotland

in: Shongaloo, La. (Webster Parish)

CHILDREN

1
M

Name: Simeon Burns

Born: 1818

2
M

Name: John Andrew Burns

Born: February 19, 1820

Died: October 03, 1910

Spouse: Lucinda Whitson

in: AL

in: Shongaloo, La. (Webster Parish)

3
M

Name: James Monroe Burns

Born: April 05, 1822

4
M

Name: Andrew S. Burns

Born: 1824

5
F

Name: Harriet Jane Burns

Born: June 14, 1826

6
F

Name: Belinda Burns

Born: 1828

7
M

Name: William W. Burns

Born: 1830

8
M

Name: Cicero B. Burns

Born: 1832

9
F

Name: Sarah Elizabeth Burns

Born: November 23, 1835

10
M

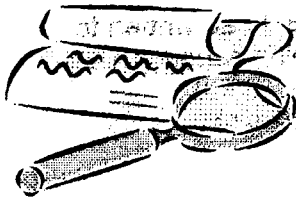
Name: Thomas Fortson Burns

Born: October 1837

11
M

Name: Richard Burns

Born: 1840



Elia Jean Dyke

257 Burt Lane

West Monroe, La. 71291-7486

Phone (318) 397-7728

Found: Another Piece of the Puzzle

by Carole Neal

"He died overseas during World War I." That is what I had always heard about my great uncle John Jamison, my maternal grandmother's twin brother and her only sibling.

There were conflicting family stories as to where he was buried. My mother believed he was buried in the U.S. while her sister believed he was buried overseas. The Jamison line is my most challenging. My grandmother, Pemilla [Jamison] Seals Fairchild, and John Jamison were born March 28, 1896 in Camden, Arkansas. Their parents were Annie Warren and John Jamison. Very little information is known about John Jamison, the elder.

As genealogists, we have learned that instinct, hunches, and just plain luck contribute to our successes. In the fall of 1999 I attended back-to-back weekend annual conferences: the Afro-American Historical and Genealogical Society (AAHGS) Conference in Washington, D.C. and the Family Reunion Institute Conference in Philadelphia, PA. Sandwiched in between, I researched at the National Archives (NARA). My sole focus was to research Freedmen Bureau records. However, my elusive ancestors remained just that. I found nary a mention in Freedmen Bureau records of any of my ancestors! To say I was frustrated and disappointed is putting it mildly. My primary area of research is Northern Louisiana. A NARA archivist told me Freedmen Bureau records tend to be more plentiful in areas where the Army was prominent. In Louisiana, that would be the New Orleans area and other southern and central Louisiana locales.

I then decided to research the Southern Claims Commission records. I had done some preliminary research, unsuccessfully, of these microfilmed records previously at the NARA regional branch in San Bruno, California, but was eager to research the actual records housed at NARA. One day I took the shuttle to the NARA II building in College Park, MD. Struck out again! I'd anticipated finally finding some mention or record of at least one of my ancestors, but came away empty-handed. One of the archivists walked me back into the stacks to double-check for records pertaining to Louisiana. We found little for that state and he mentioned that unfortunately a lot of the records had been destroyed before their historical value was recognized.

Before I'd met with the archivist and while waiting in the reception area, I browsed through the magazines on display and, I believe, fate drew me to the summer 1999 edition of Prologue, NARA's quarterly magazine. I scanned the table of contents and saw an article entitled "World War I Gold Star Mothers Pilgrimages." It told about a government program that paid the travel expenses to the gravesites for mothers and widows whose sons and husbands had died as members of the American Expeditionary Forces (AEF) during the war. The article went on to describe the "Graves Registration Service (GRS)" which was enacted in 1917. For each soldier who died overseas, a GRS file was created.

I became excited because I immediately thought of great uncle John. In 1998, I had written to Arlington National Cemetery to ask if there were a record of John Jamison being buried there. In my letter I included possible other spellings of the surname such as Jamerson and Jimmerson. The response I received from Arlington was that they had no one by that name buried in the cemetery.

I didn't get a chance to finish reading the article at NARA II that day as I was interrupted when the archivist was ready to meet with me. Back in D.C. I bought a copy of the magazine at the NARA bookstore and finished reading it after I returned home from my trip. I then wrote and requested a copy of the GRS file for John Jamison. I addressed my request to:

Military Textual Reference Branch (NWCTM)
National Archives
8601 Adelphi Road
College Park, MD 20740-6001

My letter included a statement that the information was being requested for my family research project and I provided the following information about the deceased:

- Name
- Branch of service
- Date and place of birth
- Name of sibling
- Name of mother
- Place of residence

About two weeks later, I received a reply which included an order form, NATF Form 72. I completed the form and mailed it in along with my payment. The method of payment determines where the form and payment are sent. Payments by check are sent to an address in Atlanta, GA; payments by credit card are sent to an address in Washington, D.C.

Soon after submitting the form and payment, I received a packet containing copies of the information in the GRS file for John Jamison. From that information I learned:

- His date and place of death to be April 18, 1919, Base Hospital No. 101. He was only 23 years of age when he died
- The cause of death was Peritonitis Tuberculosis. Interestingly, I'd learned at a recent genealogy seminar that tuberculosis was the leading cause of death at the turn of the century
- The name of the American cemetery in France where he is buried, as well as the gravesite location, and that an identification tag was buried with the body and a tag also was fastened to the stake used as a grave marker.
- Type of casket
- His rank in the Army was Private
- His unit and company was 808th Company, Transportation Corps
- Serial number
- The War Risk Insurance information listed his mother, Mrs. Annie Criner, as beneficiary.
- Initially, he was buried at the American Base Cemetery #21, St. Nazaire, France.
- In November 1921 the body was disinterred and subsequently reburied at Oise-Aisne American Cemetery, Seringes-et-Nesles, Aisne, France.

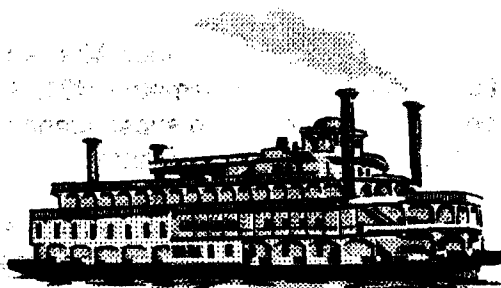
According to the file, a year's time elapsed between disinterment and reburial. I did not find information in the file that gave a reason for the reburial or the time lapse. I hope one day to travel to France and visit his gravesite.

Also in the file were copies of correspondence between the quartermaster general of the War Department and my great-grandmother. She was the next of kin since he was not married nor had any children. The correspondence mostly consisted of her responding to questions on a form, but there was one handwritten letter she wrote to the quartermaster general. She initially indicated she would make the pilgrimage and that she desired his remains to be returned to the U.S. for burial. However, in later communications she indicated her health prevented her from making the trip and that she did not want his body moved. I suspect she probably was a bit overwhelmed by all of the paperwork; and the thought of leaving the small town of Homer, Louisiana, and traveling to New York to board a steamer to travel "across the water" to France was a bit much.

Not too long ago I spoke with my uncle, my mother's youngest brother, and mentioned this information. He recalled that during the Depression the family was having a very hard time making ends meet. My grandmother was widowed in 1930, left with eight children ranging in age from 16 years to four weeks. This uncle was the newborn baby. He said "without that \$60 a month check" that my great-grandmother received as her son's beneficiary, he didn't know how they would have made it and, as a young boy, could recall hearing his mother in the other room crying and great-grandmother Annie trying to comfort her, saying "It's going to be all right."

Hearing his comments reinforced my determination to dig up copies of any pension files for John Jamison. Previously, I had mailed a request to the Department of Veterans Affairs for such files but did not receive a reply. After speaking with my uncle and now knowing for certain a pension was paid, I sent a follow-up request. The VA's reply came stating they needed more information in order to search. In March 2001, I re-sent my request providing any and all information I had. In late October 2001, I received a packet from the VA containing copies of the contents of the insurance claim file for great uncle John. Information in the file has provided me with additional research leads for both my Warren and my Jamison lines.

Carole Neal is the Family Historian for both sides of her family and has been seriously researching her family roots since 1996. She has coordinated family reunions for both paternal and maternal gatherings. Ms. Neal is a member of the Ark-La-Tex Genealogical Association, a past officer and past Membership Chair of the African American Genealogical Society of Northern California, a member of the Louisiana Genealogical and Historical Society, the National Genealogical Society, and the California Genealogical Society and is in the process of establishing a part time consultancy as Advisor, Genealogy and Reunion Planning. She may be reached by e-mail at cen@worldnet.att.net



AHNENTAFEL PEDIGREE CHART

of

Carroll Heard Goyne, Jr.

Many persons living in North Louisiana today descend from early settlers in Union Parish, Louisiana. Some of the original settlers listed on this chart arrived in the Union Parish area prior to the founding of the parish in 1838. All but one of the original families listed on this chart had arrived in Union Parish by the start of the Civil War.

The following will be helpful in using this particular Ahnentafel Chart.

To find an ancestor:

1. Double the number of an individual to find that person's father.
2. Double the number of an individual and add one to find that person's mother.
3. If no number is listed, that person's name is not listed in the database.

Abbreviations:

(RN=xx) is that individual's record number in the writer's genealogy files.

(E)=Emigrant/Immigrant

(R)= Revolutionary War

(1812)=War of 1812

(CSA)=Confederate States of America, Civil War

(WW I)=World War I

(WW II)= World War II

b=born

m=married

rm=remarried

d=died

abt=about

aft=after

bfr=before

c=circa

lvd=lived

prob=probably

unk=unknown

W:=Will date

P:=Probate date

Inv:=Inventory date



Ancestor Chart

Chart No. 1

Name of Compiler Carroll H Goyne, Person No. 1 on this chart is the name
 Address 10019 Canterbury Dr. person as No. _____ on chart No. _____
 City, State Shreveport, La 71106
 Date 7 Jan 2002

b. Date of Birth
 p.b. Place of Birth
 m. Date of Marriage
 d. Date of Death
 p.d. Place of Death

4 Lee Goyne
 (Father of No. 2)
 b. 14 Jul 1872
 p.b. Union Par, La
 m. 20 May 1894
 d. 7 Oct 1910
 p.d. Gibsland, Bienville, La

2 Carroll Heard Goyne
 (Father of No. 1)
 b. 6 May 1900
 p.b. Bernice, Union, La
 m. 19 Dec 1920
 d. 2 Aug 1956
 p.d. Shreveport, La

5 Mary Etta Heard
 (Mother of No. 2)
 b. 22 May 1875
 p.b. Union Par, La
 d. 18 Nov 1940
 p.d. Bernice, Union, La

1 Carroll Heard Goyne, Jr.
 b. 15 Sep 1924
 p.b. Shreveport, La
 m. 2 Jan 1947
 d. Living
 p.d.

6 Harry Thomas Glass
 (Father of No. 3)
 b. 19 Apr 1874
 p.b. Spaulding Co, Ga
 m. 17 Jan 1900
 d. 29 Jul 1913
 p.d. Shreveport, La

3 Eunice Glass
 (Mother of No. 1)
 b. 5 Jan 1901
 p.b. Union Par, La
 d. 3 Jan 1941
 p.d. Shreveport, La

7 Mary Caroline Shackelford
 (Mother of No. 3)
 b. 28 Jul 1882
 p.b. Union Par, La
 d. 20 Nov 1964
 p.d. Shreveport, La

Petty Jean Brantley
 (Spouse of No. 1)
 b. 30 Jul 1927
 p.b. Union Par, La
 d. Living
 p.d.

8 Joseph Ryland Goyne
 (Father of No. 4)
 b. 15 Jun 1830
 p.b. Talliaferro Co, Ga
 m. (7)8 Aug 1871
 d. 11 Feb 1880
 p.d. Union Par, La

9 Sarah Jane Lee
 (Mother of No. 4)
 b. 31 Dec 1852
 p.b. Union Par, La
 d. 10 Jun 1879
 p.d. Union Par, La

10 Thomas Anderson Heard
 (Father of No. 5)
 b. 19 Oct 1845
 p.b. Perry Co, Al
 m. 1874
 d. 23 Mar 1907
 p.d. Bernice, Union, La

11 Mary Ann Eliza Weldon
 (Mother of No. 5)
 b. 19 Dec 1853
 p.b. Union Par, La
 d. 23 Feb 1936
 p.d. Bernice, Union, La

12 Harrison Turner Glass
 (Father of No. 6)
 b. 27 Dec 1824
 p.b. Ga
 m. 1 May 1864
 d. 22 Aug 1889
 p.d. Union Par, La

13 Roseanna Ellen Nutt
 (Mother of No. 6)
 b. 13 Feb 1838
 p.b. Ga
 d. 30 May 1922
 p.d. Union Par, La

14 James Paschal Shackelford
 (Father of No. 7)
 b. 1 Feb 1848
 p.b. Jefferson Co, Al
 m. 7 Oct 1866
 d. 28 Feb 1933
 p.d. Union Par, La

15 Sarah Madora Byram
 (Mother of No. 7)
 b. 2 May 1849
 p.b. Union Par, La
 d. 28 Jan 1923
 p.d. Union Par, La

16 Hiram Davis Goyne
 (Father of No. 8)
 b. 1799
 m. 4 Jan 1818
 d. 2 Feb 1852
 p.d. Union Par, La

17 Mary "Polly" Allen
 (Mother of No. 8)
 b. 1800
 d. bfr Sep 1837

18 John Martin Lee, Sr.
 (Father of No. 9)
 b. 24 Jul 1829
 m. 5 Feb 1849
 d. 30 Jun 1893

19 Mary Jane Taylor
 (Mother of No. 9)
 b. 14 Jun 1831
 d. 18 Oct 1903

20 Stephen Suthard Heard
 (Father of No. 10)
 b. 13 Oct 1804
 m. 1 Jan 1829
 d. 22 Jun 1889

21 Mary Ann Wright
 (Mother of No. 10)
 b. 4 Jul 1810
 d. 26 Aug 1901

22 John M Weldon
 (Father of No. 11)
 b. 1821
 m. 31 Jan 1844
 d. 18 Sep 1861

23 Caroline M Johnson
 (Mother of No. 11)
 b. 31 Jan 1844

24 Pleasant McGann Glass
 (Father of No. 12)
 b. 1800
 m. 4 Dec 1822

25 Lany Jackson
 (Mother of No. 12)
 b. 1841

26 William R Nutt
 (Father of No. 13)
 b. 1800

27 Roseanna Harkness
 (Mother of No. 13)
 b. 1851

28 Joseph H Shackelford
 (Father of No. 14)
 b. 24 Jun 1826
 m. 13 Jan 1847

29 Harriet Eliz. Massey
 (Mother of No. 14)
 b. 7 Feb 1828
 d. 29 Dec 1888

30 Quincy Adams Byram
 (Father of No. 15)
 b. 9 Apr 1820
 m. 23 Jul 1843
 d. 24 Apr 1911

31 Sarah Madora Farmer
 (Mother of No. 15)
 b. 2 Nov 1828
 d. 27 Aug 1866

Form A7 Copyright 1983 by The Everton Publishers Inc. P.O. Box 368 Logan Utah Publishers of THE GENERAL HELPER Send for a free catalogue with lists and full descriptions of many genealogical aids

From the files of Carroll H. Goyne, Jr.
10019 Canterbury Dr.
Shreveport, LA 71106-8401
(318) 798-7108

Ahnentafel for Carroll Heard Goyne Jr Col (WW II) (RN=1).

07 Jan 2002

1. Carroll Heard Goyne Jr Col (WW II) (RN=1), b 15 Sep 1924 at Shreveport, Caddo, La, m to Betty Jean Brantley (RN=2) 02 Jan 1947 at Mansfield, DeSoto, La, Living at Shreveport, Caddo, La.

Generation 1

2. Carroll Heard Goyne (WW I) (RN=5), b 06 May 1900 at Bernice, Union, La, m to Eunice Glass (RN=6) 19 Dec 1920 at Mansfield, DeSoto, La (Widowed), d 02 Aug 1956 at Shreveport, Caddo, La.
3. Eunice Glass (RN=6), b 05 Jan 1901 at Union Parish, La, m to Carroll Heard Goyne (WW I) (RN=5) 19 Dec 1920 at Mansfield, DeSoto, La, d 03 Jan 1941 at Shreveport, Caddo, La.

Generation 2

4. Lee Goyne (RN=8), b 14 Jul 1872 at Union Parish, La, m to Mary Etta Heard (RN=9) 20 May 1894 at Union Parish, La, d 07 Oct 1910 at Gibsland, Bienville, La.
5. Mary Etta Heard (RN=9), b 22 May 1875 at Union Parish, La, m to Lee Goyne (RN=8) 20 May 1894 at Union Parish, La, d 18 Nov 1940 at Bernice, Union, La.
6. Harry Thomas Glass (RN=376), b 19 Apr 1874 at Spaulding Co, Ga, m to Mary Caroline Shackelford (RN=377) 17 Jan 1900 at Union Parish, La, d 29 Jul 1913 at Shreveport, Caddo, La.
7. Mary Caroline Shackelford (RN=377), b 28 Jul 1882 at Union Parish, La, m to Harry Thomas Glass (RN=376) 17 Jan 1900 at Union Parish, La (Widowed), d 20 Nov 1964 at Shreveport, Caddo, La.

Generation 3

8. Joseph Ryland Goyne (RN=13), b 15 Jun 1830 at Taliaferro Co, Ga, m to Sarah Jane Lee (RN=14) 08 Aug 1871 at Union Parish, La (Widowed), d 11 Feb 1880 at Spearsville, Union, La.
9. Sarah Jane Lee (RN=14), b 31 Dec 1852 at Union Parish, La, m to Joseph Ryland Goyne (RN=13) 08 Aug 1871 at Union Parish, La, d 10 Jun 1879 at Spearsville, Union, La.
10. Thomas Anderson Heard (CSA) (RN=21), b 19 Oct 1845 at Al, m to Mary Ann Elizabeth Weldon (RN=22) 1874 at Union Parish, La, d 23 Mar 1907 at Bernice, Union, La.
11. Mary Ann Elizabeth Weldon (RN=22), b 19 Dec 1853 at Union Parish, La, m to Thomas Anderson Heard (CSA) (RN=21) 1874 at Union Parish, La, d 23 Feb 1936 at Bernice, Union, La.
12. Harrison Turner Glass (RN=378), b 27 Dec 1824 at Ga, m to Roseanna Ellen Nutt (RN=379) 01 May 1864 at Spaulding Co, Ga, d 22 Aug 1889 at Union Parish, La.
13. Roseanna Ellen Nutt (RN=379), b 13 Feb 1838 at Ga, m to Harrison Turner Glass (RN=378) 01 May 1864 at Spaulding Co, Ga (Widowed), d 30 May 1922 at Union Parish, La.
14. James Paschal Shackelford (RN=380), b 01 Feb 1848 at Jefferson Co, Al, m to Sarah Madora Byram (RN=381) 07 Oct 1866 at Union Parish, La (Widowed), d 28 Feb 1933 at Union Parish, La.
15. Sarah Madora Byram (RN=381), b 02 May 1849 at Union Parish, La, m to James Paschal Shackelford (RN=380) 07 Oct 1866 at Union Parish, La, d 28 Jan 1923 at Union Parish, La.

Generation 4

16. Hiram Davis Goyne (RN=29), b 1799 at Warren Co, Ga, m to Mary "Polly" Allen (RN=30) 04 Jan 1818 at Warren Co, Ga (Widowed), d 02 Feb 1852 at Union Parish, La.
17. Mary "Polly" Allen (RN=30), b 1800 at SC, m to Hiram Davis Goyne (RN=29) 04 Jan 1818 at Warren Co, Ga, d bfr Sep 1837 at Houston Co, Ga.
18. John Martin Lee Sr (RN=43), b 24 Jul 1829 at Wilcox Co, Al, m to Mary Jane Taylor (RN=44) 06 Feb 1849 at Union Parish, La, d 30 Jun 1893 at Union Parish, La.
19. Mary Jane Taylor (RN=44), b 14 Jun 1831 at Montgomery Co, Al, m to John Martin Lee Sr (RN=43) 06 Feb 1849 at Union Parish, La (Widowed), d 18 Oct 1903 at Mer Rouge, Morehouse, La.
20. Stephen Suthard Heard (RN=51), b 13 Oct 1804 at Wilkes Co, Ga, m to Mary Ann Wright (RN=52) 01 Jan 1829 at Perry Co, Al, d 22 Jun 1889 at Union Parish, La.
21. Mary Ann Wright (RN=52), b 04 Jul 1810 at Ga, m to Stephen Suthard Heard (RN=51) 01 Jan 1829 at Perry Co, Al, d 26 Aug 1901 at Union Parish, La.

22. John M Weldon (CSA) (RN=62), b 1821 at Jasper Co, Ga, m to Caroline M Johnson (RN=63) 31 Jan 1844 at Henry Co, Ga, d 18 Sep 1861 at Columbus, Ky.
23. Caroline M Johnson (RN=63), m to John M Weldon (CSA) (RN=62) 31 Jan 1844 at Henry Co, Ga.
24. Pleasant McGann Glass (RN=382), b 1800 at Va, m to Lany Jackson (RN=383) 04 Dec 1822 at Wilkes Co, Ga (Widowed).
25. Lany Jackson (RN=383), m to Pleasant McGann Glass (RN=382) 04 Dec 1822 at Wilkes Co, Ga, d 1841 at Butts Co, Ga.
26. William B Nutt (RN=384), b 1800 at SC, m to Rosanna Harkness (RN=385).
27. Rosanna Harkness (RN=385), b at Ga, m to William B Nutt (RN=384).
28. Joseph Henry Shackelford (RN=386), b 24 Jun 1826 at Jefferson Co, Al, m to Harriet Elizabeth Massey (RN=387) 13 Jan 1847 at Jefferson Co, Al (Widowed), d 26 Aug 1910 at Ruston, Lincoln, La.
29. Harriet Elizabeth Massey (RN=387), b 07 Feb 1828 at Jefferson Co, Al, m to Joseph Henry Shackelford (RN=386) 13 Jan 1847 at Jefferson Co, Al, d 29 Dec 1888 at Union Parish, La.
30. Quincy Adams Byram (CSA) (RN=388), b 09 Apr 1820 at Jasper Co, Al, m to Sarah Madora Parmer (RN=389) 23 Jul 1843 (Widowed), d 24 Apr 1911 at Union Parish, La.
31. Sarah Madora Parmer (RN=389), b 02 Nov 1828 at Ga, m to Quincy Adams Byram (CSA) (RN=388) 23 Jul 1843, d 27 Aug 1866 at Union Parish, La.

Generation 5

32. William Goyne (RN=64), b c 1732 at Pr William Co, Va, rm to Agnes "Nancy" Stroder (RN=65) c 1796 at Wilkes Co, Ga, d Aug 1817 at Warren Co, Ga.
33. Agnes "Nancy" Stroder (RN=65), b 1768 at Pa, m to William Goyne (RN=64) c 1796 at Wilkes Co, Ga (Widowed), d 1867 at Union Parish, La.
36. Martin Batte Lee (RN=75), b 22 Apr 1798 at Sampson Co, NC, m to Lavincy Louisa Albritton (RN=76) 1817 at NC (Widowed), d 28 Mar 1884 at Union Parish, La.
37. Lavincy Louisa Albritton (RN=76), b 15 Mar 1800 at Pitt Co, NC, m to Martin Batte Lee (RN=75) 1817 at NC, d 12 Jun 1864 at Union Parish, La.
38. John Taylor (RN=313), b 12 Mar 1804 at Ga, m to Jane (Payne) Wood (RN=314) 23 Aug 1827 at Butler Co, Al (Widowed), d 30 Dec 1877 at Union Parish, La.
39. Jane (Payne) Wood (RN=314), b 16 Aug 1811 at Ga, m to John Taylor (RN=313) 23 Aug 1827 at Butler Co, Al, d 15 Nov 1853 at Union Parish, La.
40. Joseph Heard (R) (RN=85), b 1760 at NC, m to Jane Anderson (RN=86) at Wilkes Co, Ga (Widowed), d 1836 at Perry Co, Al.
41. Jane Anderson (RN=86), m to Joseph Heard (R) (RN=85) at Wilkes Co, Ga, d bfr 12 Oct 1819 at Wilkes Co, Ga.
42. John Wright (RN=3827), b 14 Feb 1775 at Wilkes Co, Ga, m to Drucilla Griffin (RN=2288) 1797 at Wilkes Co, Ga, d at Union Parish, La.
43. Drucilla Griffin (RN=2288), b 1784, m to John Wright (RN=3827) 1797 at Wilkes Co, Ga, d 10 Aug 1852 at Union Parish, La.
44. William W Weldon (RN=2327), b 1775, m to Rebecca Gill (RN=2328) 01 Nov 1801 at Columbia Co, Ga, d 02 Jan 1867 at Spaulding Co, Ga.
45. Rebecca Gill (RN=2328), b 1782 at SC, m to William W Weldon (RN=2327) 01 Nov 1801 at Columbia Co, Ga, d 1853 at Spaulding Co, Ga.
48. Thomas W Glass (RN=451), b 22 Sep 1766 at Va, m to Mary Allen (RN=2228) 25 May 1790 at Goochland Co, Va.
49. Mary Allen (RN=2228), b at Va, m to Thomas W Glass (RN=451) 25 May 1790 at Goochland Co, Va.
52. Samuel Nutt (RN=5247).
54. James Washington Harkness (RN=416), b 09 Jul 1780 at Abbeville Co, SC, m to Rosanna Baskin (RN=417) 01 Jun 1801 at SC, d 09 Jul 1851 at Butts Co, Ga.
55. Rosanna Baskin (RN=417), b 17 Mar 1776 at Va, m to James Washington Harkness (RN=416) 01 Jun 1801 at SC, d 09 Aug 1840 at Butts Co, Ga.
56. Paschal J Shackelford (RN=446), b 1800 at Ga, m to Elizabeth Ann Hickman (RN=447) 08 Feb 1825 at Jeffersor Co, Al, d Aft Dec 1870 at Lvd Union Par, La.
57. Elizabeth Ann Hickman (RN=447), b 03 Feb 1808 at Pendleton Dist, SC, m to Paschal J Shackelford (RN=446) 08 Feb 1825 at Jefferson Co, Al, d at Union Parish, La in 1870 census.

58. James Massey (RN=545), b 1782 at Md, m to Mary Nations (RN=546) at Pendleton Dist, SC, d 1857 at Jefferson Co, Al.
59. Mary Nations (RN=546), b 01 May 1794 at NC, m to James Massey (RN=545) at Pendleton Dist, SC, d 10 Jan 1875 at Jefferson Co, Al.
60. John Byram (RN=734), b 02 Jan 1792 at NC, m to Harriet Smith (RN=5135) 1812 at Ga (Widowed), d 10 Jun 1858 at Byram, Hinds, Ms.
61. Harriet Smith (RN=5135), m to John Byram (RN=734) 1812 at Ga.
-
- Generation 6
64. John Goyne (RN=2574), b c 1709 at Stafford Co, Va, m to Mary Keith (RN=3617) c 1728 at Pr William Co, Va.
65. Mary Keith (RN=3617), b c 1710 at Scotland or Stafford Co, Va, m to John Goyne (RN=2574) c 1728 at Pr William Co, Va.
66. Alexander Stroder (RN=73), m to Isabella unk (RN=2489) ca 1767 at Pa ?, d c 1791 at Wilkes Co, Ga.
67. Isabella unk (RN=2489), m to Alexander Stroder (RN=73) ca 1767 at Pa ? (Widowed), d W:6 Oct 1793;P:12 Feb 1794 at Wilkes Co, Ga.
72. John Cato Lee (R) (RN=77), b 1757 at Brunswick Co, Va, m to Nancy Holland (RN=78) 1780 at Sampson Co, NC, d 26 Sep 1836 at Wilcox Co, Al.
73. Nancy Holland (RN=78), b 1760 at Nansemond Co, Va, m to John Cato Lee (R) (RN=77) 1780 at Sampson Co, NC, d 1838 at Washington Co, Ga.
74. Enoch Albritton (RN=94), b 1771 at Pitt Co, NC, m to Penelope Frizzle (RN=323) 1793 at Pitt Co, NC, d 14 Feb 1834 at Wilcox Co, Al.
75. Penelope Frizzle (RN=323), b 27 Jan 1772 at Pitt Co, NC, m to Enoch Albritton (RN=94) 1793 at Pitt Co, NC, d 1860+ at Union Parish, La.
76. William Taylor (RN=364), m to Catherine Gray (RN=365), d Jan 1830 at Butler Co, Al.
77. Catherine Gray (RN=365), m to William Taylor (RN=364), d 1833 at Butler Co, Al.
78. Matthew Wood (RN=315), b 29 Aug 1791 at Ga, m to Hannah Payne (RN=316) 1817 at prob Washington Co, Ga, d 20 Oct 1855 at Union (now Lincoln) Parish, La.
79. Hannah Payne (RN=316), b 17 May 1791 at Ga, m to Matthew Wood (RN=315) 1817 at prob Washington Co, Ga (Widowed), d 09 Feb 1864 at Union Parish, La.
80. Charles Heard (R) (RN=105), b 1718 at Lancaster Co, Pa, m to Elizabeth unk (RN=1618) (Widowed), d 1797 at Wilkes Co, Ga.
81. Elizabeth unk (RN=1618), m to Charles Heard (R) (RN=105).
82. John Rogers Anderson (R) (RN=107), b 1747 at Bedford Co, Va, m to Mary Suthard (RN=2468) 1767 at Bedford Co, Va, d 30 Oct 1812 at Wilkes Co, Ga.
83. Mary Suthard (RN=2468), b 1750 at Va, m to John Rogers Anderson (R) (RN=107) 1767 at Bedford Co, Va (Widowed), d 03 Nov 1826 at Wilkes Co, Ga.
84. Arthur Wright (RN=2262), b 07 Aug 1760, m to Marrenck unk (RN=2501), d by 1805.
85. Marrenck unk (RN=2501), m to Arthur Wright (RN=2262).
86. Owen Griffin (RN=2508), m to Anne Stovall (RN=2509).
87. Anne Stovall (RN=2509), m to Owen Griffin (RN=2508).
88. Isaac Weldon (RN=2329).
96. Thomas Glass (RN=2229), b at Va, m to Mary Adams (RN=3678) 1758 at Goochland Co, Va.
97. Mary Adams (RN=3678), m to Thomas Glass (RN=2229) (Widowed), d W:26 Oct 1828;P:10 Aug 1829 at Union District, SC.
98. James Allen (RN=5246), m to unk (No Record).
99. Unk (No Record).
110. William Baskin Jr Capt (R) (RN=418), b 14 Feb 1737 at Chester Co, Pa, m to Ann Reid (RN=419) 12 Jan 1769 at SC, d 09 Apr 1804 at Abbeville Co, SC.
111. Ann Reid (RN=419), b 1747, m to William Baskin Jr Capt (R) (RN=418) 12 Jan 1769 at SC.
112. Henry Shackelford Jr (RN=4916), d at Elbert Co, Ga.
113. Unk (No Record).
114. Joseph Hickman (1812) (RN=448), b 15 Nov 1787 at Pendleton Dist, SC, m to Martha "Patsy" Pullen (RN=449) 19 Mar 1807 at Wilkes Co, Ga, d 19 Jun 1861 at Pickens Co, Al.

- 115. Martha "Patsy" Pullen (RN=449), b 03 Aug 1790 at Wilkes Co, Ga, m to Joseph Hickman (1812) (RN=448) 19 Mar 1807 at Wilkes Co, Ga, d 30 Nov 1873 at Tuscaloosa Co, Al.
- 118. Abraham Nations (RN=547), b 1760-70 at Rowan Co, NC, m to Rebecca unk (RN=548), d at Jefferson Co, Al.
- 119. Rebecca unk (RN=548), m to Abraham Nations (RN=547).
- 120. Ebenezer Byram (1812) (RN=735), b Nov 1769 at Mendham, NJ, m to Sarah Hinds (RN=5136) (Widowed), d 1828 at Jackson Co, Al.
- 121. Sarah Hinds (RN=5136), m to Ebenezer Byram (1812) (RN=735).

Generation 7

- 128. William Goyne (RN=3619), b bfr 1685 at Va, m to Catherine unk (RN=3620) at Stafford Co, Va, d Feb 1726 at Stafford Co, Va.
- 129. Catherine unk (RN=3620), m to William Goyne (RN=3619) bfr 1680 at Stafford Co, Va (Widowed), d W:21 May 1739/P:23 Jul 1739 at Brunswick Co or Pr William Co, Va.
- 130. Cornelius Keith (E) (RN=3618), b 16xx at Loch Lomond, Scotland, m to unk unk (RN=5133) at Scotland.
- 131. unk unk (RN=5133), b at prob Scotland, m to Cornelius Keith (E) (RN=3618) at Scotland, d at prob Va.
- 144. Peter Lee Jr (RN=109), b 1737 at Isle of Wight Co, Va, m to Mary Cato (RN=110), d 1804 at Sampson Co, NC.
- 145. Mary Cato (RN=110), b 1738-40 at Brunswick Co, Va, m to Peter Lee Jr (RN=109), d 1780-90 at Sampson Co, NC.
- 148. James Albritton Jr (RN=183), b bfr 1740 at Princess Ann Co, Va, m to Mary Arnett (RN=3402) at NC, d btw 1793-1800 at Pitt Co, NC.
- 149. Mary Arnett (RN=3402), m to James Albritton Jr (RN=183) at NC.
- 150. John Frizzle (R) (RN=361), b c 1717 at prob Va, m to Mary Roundtree (RN=362) by 1770 at Pitt Co, NC (Widowed), d Oct 1818 at Pitt Co, NC.
- 151. Mary Roundtree (RN=362), b at Pitt Co, NC, m to John Frizzle (R) (RN=361) by 1770 at Pitt Co, NC, d bfr 1815 at Pitt Co, NC.
- 156. Abraham Wood (R) (RN=317), b 27 Jul 1762 at St Mary's Co, Md, d W:18 Dec 1827/P:14 Sep 1828 at Pulaski Co, Ga.
- 158. William Payne (R) (RN=318), b at lvd Ga, m to Abigail Shows (RN=3405), d at La.
- 159. Abigail Shows (RN=3405), m to William Payne (R) (RN=318).
- 160. Charles Heard (E) (RN=2128), b at N Ireland, m to Isabella unk (RN=1765), d 1748 at Albemarle Co, Va.
- 161. Isabella unk (RN=1765), b at prob Ireland, m to Charles Heard (E) (RN=2128) at prob Ireland (Widowed), d at prob NC.
- 172. Richard Griffin (RN=2510), m to Mary Green (RN=2511).
- 173. Mary Green (RN=2511), m to Richard Griffin (RN=2510).
- 174. John Stovall (RN=2512), m to Dorcas unk (RN=2513).
- 175. Dorcas unk (RN=2513), m to John Stovall (RN=2512).
- 192. James Glass (RN=2230), b at Va.
- 194. unk Adams (RN=3682), m to Margaret unk (RN=3681), d bfr 19 Aug 1803.
- 195. Margaret unk (RN=3681), m to unk Adams (RN=3682).
- 220. William Baskin Sr (RN=420), b 1700/05 at Co Donegal, Ireland, m to Mary Stuart (RN=421) abt 1730 at Ireland.
- 221. Mary Stuart (RN=421), b 1709 at Ireland, m to William Baskin Sr (RN=420) abt 1730 at Ireland.
- 222. George Reid Capt (RN=422), b 1719 at Ireland, m to Abigail Leger (RN=423).
- 223. Abigail Leger (RN=423), b at France, m to George Reid Capt (RN=422).
- 224. Henry Shackelford (RN=5248).
- 228. William Hickman (R) (RN=450), b 25 Dec 1756 at Cecil Co, Md, m to Ann unk (RN=4933) (Widowed), d 1835 at Monroe Co, Mo.
- 229. Ann unk (RN=4933), m to William Hickman (R) (RN=450).
- 230. William Pullen (R)(1812) (RN=452), b 04 Feb 1757 at Bedford Co, Va, m to Mary Haynes (RN=453) 1786 at Wilkes Co, Ga, d 04 Apr 1845 at Jefferson Co, Al.
- 231. Mary Haynes (RN=453), b 1767 at Va, m to William Pullen (R)(1812) (RN=452) 1786 at Wilkes Co, Ga, d 03 Jul 1851 at Jefferson Co, Al.
- 236. Christopher Nations (RN=647), m to Elizabeth unk (RN=5249), d W:31 Jan 1799 at Randolph Co, NC.

- 237. Elizabeth unk (RN=5249), m to Christopher Nations (RN=647).
- 238. (Cherokee) (No Record).
- 239. (Cherokee) (No Record).
- 240. Ebenezer Byram (R) (RN=736), b 24 Jun 1744 at Bridgewater, Ma, m to Lydia Guerin (RN=5138), d After 1827 at Knox Co, Tn.
- 241. Lydia Guerin (RN=5138), m to Ebenezer Byram (R) (RN=736).

Generation 8

- 256. Thomas Goyne (E) (RN=3625), b bfr 1655 at England, m to unk unk (RN=3630) unk at Md/Va, d aft Dec 1716 at prob Fairfax Co, Va.
- 257. unk unk (RN=3630), m to Thomas Goyne (E) (RN=3625) unk at Md/Va.
- 288. Peter Lee Sr (RN=111), b 1718 at Isle of Wight Co, Va, m to Elizabeth Lunday (RN=116), d 1738 at NC.
- 289. Elizabeth Lunday (RN=116), m to Peter Lee Sr (RN=111).
- 290. John Cato Rev (RN=113), b at Va, m to Jane Cooke (RN=114), d 1804 at SC.
- 291. Jane Cooke (RN=114), b 1674, m to John Cato Rev (RN=113).
- 296. James Albritton (RN=2362), b 17 Sep 1705 at York Co, Va, m to Elizabeth unk (RN=5251) (Widowed), d 1769-1774 at Pitt Co, NC.
- 297. Elizabeth unk (RN=5251), m to James Albritton (RN=2362).
- 302. Jesse Roundtree (R) (RN=2365), b at Va.
- 303. Rachel Spivey (No Record).
- 320. Stephen Heard Capt (E) (RN=1613), b c 1665 at England/Ireland, m to Margaret McDonald (RN=5146) at N Ireland (Widowed), d at Sadsbury Twp, Lancaster Co, Pa.
- 321. Margeret McDonald (RN=5146), b 16xx at prob Ireland, m to Stephen Heard Capt (E) (RN=1613) at N Ireland, d bfr 1720 at N Ireland.
- 348. Bartholomew Stovall (E) (RN=2514), m to Anne Burton (RN=2515).
- 349. Anne Burton (RN=2515), m to Bartholomew Stovall (E) (RN=2514).
- 456. Joseph Hickman (R) (RN=649), b 1720-30 at Lancaster Co, Pa, m to Mary unk (RN=4935) 1755 at Cecil Co, Md, d Bfr 6 Aug 1787 at Rowan Co, NC.
- 457. Mary unk (RN=4935), rm to Joseph Hickman (R) (RN=649) 1755.
- 460. Thomas Pullen (RN=578), b 1725-30 at Lancaster Co, Va, m to Margaret (Peggy) Adams (RN=2377) 1756 at Bedford Co, Va, d W: Prov 21 Oct 1811 at Pittsylvania Co, Va.
- 461. Margaret (Peggy) Adams (RN=2377), b at Va, m to Thomas Pullen (RN=578) 1756 at Bedford Co, Va, d 1814 at Pittsylvania Co, Va.
- 472. John Nations (RN=648), m to Bethia unk (RN=5256).
- 473. Bethia unk (RN=5256), m to John Nations (RN=648).
- 480. Ebenezer Byram (RN=737), b 17 Sep 1716 at E Bridgewater, Ma, m to Abigail Alden (RN=5139) 22 Nov 1738, d 14 Sep 1762 at Mendham, NJ.
- 481. Abigail Alden (RN=5139), m to Ebenezer Byram (RN=737) 22 Nov 1738.

Generation 9

- 576. William Lee (RN=115), b 1694 at Pr George Co, Va, m to Rebecca Burchette (RN=4035), d 3 Aug 1759-26 May 1761 at Brunswick Co, Va.
- 577. Rebecca Burchette (RN=4035), m to William Lee (RN=115).
- 578. James Lunday (RN=3408), d 1719.
- 580. George Cato (RN=117), m to Mary unk (RN=3409).
- 581. Mary unk (RN=3409), m to George Cato (RN=117).
- 582. Henry Cooke (RN=122), b 1690?, m to Hannah Jones (RN=3410), d 1774?
- 583. Hannah Jones (RN=3410), m to Henry Cooke (RN=122).
- 592. Thomas Albritton (RN=2363), b 01 Aug 1682 at York Co, Va, m to Agnes (RN=5250) at Va (Widowed), d 1730/1 at Princess Ann Co, Va.
- 593. Agnes (RN=5250), m to Thomas Albritton (RN=2363) at Va.
- 698. Thomas Burton (RN=2516), m to Susannah Hatcher (RN=2517).
- 699. Susannah Hatcher (RN=2517), m to Thomas Burton (RN=2516).

912. Joseph Hickman (E) (RN=650), b 23 Sep 1670 at Lambourn Woodlands, Berkshire, England, m to unk unk (RN=4957), d 13 May 1735 at Lancaster Co, Pa.
913. unk unk (RN=4957), m to Joseph Hickman (E) (RN=650) (Widowed).
920. William Pullen (RN=579), b Prior 1698 at Lancaster Co, Va, m to Winifred Everett (RN=583) at prob Northumberland Co, Va (Widowed), d W:26 Aug 1767;P:17 Sep 1767 at Lancaster Co, Va.
921. Winifred Everett (RN=583), b 1680s at prob Northumberland Co, Va, m to William Pullen (RN=579) at prob Northumberland Co, Va, d aft 1767 at prob Lancaster Co, Va.
960. Ebenezer Byram (RN=738), b 01 Oct 1692 at E Bridgewater, Ma, m to Hannah Hayward (RN=5140) 09 Dec 1714, d 09 Aug 1753 at Mendham, NJ.
961. Hannah Hayward (RN=5140), m to Ebenezer Byram (RN=738) 09 Dec 1714.

Generation 10

1152. Hugh Lee (RN=3999), b 1670 at Charles City, Co, Va, m to Ann Tatum (RN=4034) by 1690, d Inv: 13 Nov 1739 at Pr George Co, Va.
1153. Ann Tatum (RN=4034), b 1656, m to Hugh Lee (RN=3999) by 1690, d after 1739 at Va.
1160. John Cato (RN=119), m to Elizabeth Jane Lee (RN=120).
1184. Ralph Albritton (E) (RN=2364), b 1656 at Staffordshire, Eng, d at Va.
1185. Mary ____ (No Record).
1824. Francis Hickman (E) (RN=651), b 1640-45 at Lambourn Woodlands, Berkshire, England, m to Elizabeth Chamberlin (RN=4954) at Lambourne, Berkshire, England, d P:1 Aug 1687 at Chester Co, Pa.
1825. Elizabeth Chamberlin (RN=4954), b at England, m to Francis Hickman (E) (RN=651) at Lambourne, Berkshire, England.
1840. Henry Pullen (RN=580), b 1658-60 at Eng or Va, m to Mary Stott (RN=581), d 1698 at Lancaster Co, Va.
1841. Mary Stott (RN=581), b 1662, m to Henry Pullen (RN=580) (Widowed), d 1731 at Lancaster Co, Va.
1842. Thomas Everett (RN=584), b 1680s at prob Northumberland Co, Va, m to Elizabeth unk (RN=5255), d W:25 Jul 1726;P:13 Sep 1727 at Lancaster Co, Va.
1843. Elizabeth unk (RN=5255), m to Thomas Everett (RN=584).
1920. Nicholas Byram (RN=739), b 1640 at Weymouth, Ma, m to Mary Edson (RN=5141) 20 Sep 1676, d 20 Sep 1727 at E Bridgewater, Ma.
1921. Mary Edson (RN=5141), m to Nicholas Byram (RN=739) 20 Sep 1676.

National Archives To Release 1930 Census On 1 April 2002

The National Archives will release the 1930 Federal population census for the first time on 1 April 2002. At that time, the microfilmed copies will be opened for research at the National Archives Building in Washington, DC, at thirteen of the National Archives regional facilities across the nation and through the National Archives rental program. The National Archives Building is located on Pennsylvania Avenue, between 7th and 9th Streets, NW. The Microfilm Reading Room will open for research at 8:45 AM, following an event marking the occasion. The event will be open to the press. For a complete listing of National Archives regional locations and opening times, check the Web site at <http://www.nara.gov/genealogy/genindex.html>.

THE VANCEVILLE TOURNAMENT

By Dale Jennings

(A letter recently acquired from my wife Larri's cousin, John Geary, helped to piece together a part of Bossier Parish history. It was obtained while visiting the Gearys in McLean, Virginia, in conjunction with a Vance Family Association meeting in nearby Winchester. John lived on Cash Point Plantation in the Vanceville community during his childhood. He inherited this humorous – at least from present perspective – letter through his Vance-Logan family line.)

The Vanceville tournament was a contest between local knights competing for the honor of crowning their queens and maids of honor. This medieval competition in which knights on horseback galloped a course gathering rings on their lances was popular in the Bossier Parish towns of the 1880's. At least two of these events were held in the little community of Vanceville, Louisiana, on the Red River not far from Shreveport. The 1889 event drew the attention of the *Bossier Banner* in its July 4th edition.

"Vanceville Tournament, Etc.

According to published announcement, the tournament, barbecue and basket dinner and ball took place at Vanceville, this parish, on last Thursday and Thursday night, 27th ultimo, and a big success it was in every sense of the word.

The fifteen knights were:

Silver Stars – S. N. Arnold
America – J. M. Belcher
Crescent City – E. A. Carmouche
Unknown – J. F. Etheridge
Lance – G. E. Gilmer
No Pretensions – T. Y. Graham
Southern Cross – W. T. Gracey
Hope – R. B. Hill

Old Dominion – R. J. T. Herron
Honey Grove – Leon Haas
Star and Crescent – T. J. Oglesby
Gold Point – W. W. Rushing
Anchorage – J. H. Stinson
In Blue – W. A. Wyche
Lost Cause – F. M. Vickers

Mr. J. F. Etheridge, the successful knight, crowned Miss Mary Gilmer Queen of Love and Beauty.

Mr. W. A. Wyche crowned Miss Lucy Stinson first Maid of Honor.

Mr. R. J. Herron crowned Miss Birdie Meares second Maid of Honor.

Mr. J. H. Stinson crowned Miss Bessie Carmouche third Maid of Honor.

Mr. D. F. Stephenson, Knight of the "The Sunflower," crowned Miss Mollie Vance 'Queen of the Sunflower.'"

After a speech made by A. J. Murff of Bellevue, dinner was served. The reporter had the highest praise for the cooking, concluding, "...the spread was simply grand and a true reflex of the efforts in the culinary department of the good ladies in the Vanceville neighborhood."

A letter written by Sallie E. Vance to her daughter, Mollie, tells of another "grand tournament" at Vanceville in 1891. Individuals included in its content are Vance, Logan and Gilmer kin of John Geary, and Vance and Arnold kin of Larri Jennings. The original letter is owned by John Geary.

The Cast:

- S. E. Vance** Sallie E. Vance, second wife and widow of Dr. Samuel Whitfield Vance, and the owner of Buck Hall Plantation near Vanceville.
- Mollie** Mary Boutwell Gilmer Vance (3 given names) was Sallie's daughter. Mollie was John Geary's grandmother and Larri Jennings' second cousin twice removed.
- Jim Logan** James Conway Logan, who would marry Mollie in August 1893.
- Whit** Samuel Whitfield Vance, Jr., Mollie's younger brother.
- The Vickers** Mr. And Mrs. Samuel H. Vickers, their son Frank, and daughter Jennie, age about 18; Sallie's Buck Hall neighbors.
- George** George E. Gilmer, who worked for Mr. Zeigler at his store in Vanceville.
- Mr. Zeigler** Samuel J. Zeigler was married to Sallie, Dr. Vance's daughter by his first marriage to Mary Boutwell Gilmer (John Geary's great-grandfather, Dr. "Whitfield" Vance, had married Gilmer first cousins).
- Bessie** Elizabeth (Bessie) Carmouche Gilmer. She and George were married in January 1890.
- Mrs. John Arnold** Louisa Brownlee Arnold was the great grandmother of Larri Jennings.
- Mrs. Wesley Arnold** Probably the wife of Charles Wesley Arnold, Jr., John Arnold's first cousin.
- Lina** Probably Salina Catherine (Lina) Tidwell, named for her grandmother, Salina Catherine Arnold, John Arnold's mother.
- "old black Sally"** She may have come with the Tidwells or Arnolds. Was she being asked to go procure another cake?
- Charlie "Wimbush"** Charles Wimbish, appointed the first postmaster of nearby Brownlee in 1890.

Mary Gilmer, the "Queen of Love and Beauty," was George Gilmer's sister, Mary Peachy.

The Letter:

Buck Hall, July 13th

Dear Mollie,

I am glad to hear you got back safe & sound to Clinton, though I was sorry you did not go to see the falls. Our grand tournament is over, our visitors all gone. Jule Butler was the last, he left only a few minutes ago, they all came Wednesday & today is Monday so he at least had a nice little trip. Jim Logan was the only one of our boys got a crown, he gave the crown, sash, fancy pin & the plumes too, I believe to Emmy. Jennie got the boobie crown, _____ was her knight, instead of taking her to the ball as he ought, he took a Miss Clara Prescott & was too late to dance in the Royal set. Jennie, very properly I thought would not dance at all with him that night. Mr. Vickers & Whit worked like Trojans for it, they were both mad all day & swear they will never, no never again have any thing to do with one, Mrs. Vickers told them they were both liars, that if the boys wanted to get up another tomorrow, they would be just a(s) eager.

All the boys are down on George, he asked them not to have any stands or let anyone sell any thing on the grounds, they could have sold the right for \$25.00 & refused on his account & then he opened the old Shady Grove store & sold beer & everything else to drink. The boys asked George not to do it & even got up a petition but Mr. Zeigler left & George said he would be d---- if petitions or anything but death could stop him. Bessie brought two very small cakes & that was every thing she sent, she took a big champagne basket home. Mrs. Vickers saw there was so much that she asked the ladies to give the Club a cake or half of one to put up for the night, you ought to hear her account of how they treated her. Mrs. Wesley Arnold said no indeed, she did not purpose to feed the Club, if they wanted cake, let them go & buy it. Mrs. John Arnold said they must ask old black Sally, Sally said, go long away, her Lina was to get a crown & she must see them boys ride.

7 negro women went in Mrs. Vickers parlor & took her & Mrs. Staten's rocking chairs with nice clean taties & brought them out on the gallery to nurse their babies. The cakes Mrs. V saved for the night, she turned over to Bessie, she put them in the dressing room instead of out with the ice cream, she asked they or a few of them to her house to eat them on Friday night. This is hear say, I did not see any of it, it has about broke up the club, they say they will dance this money out, break up the club & reorganize. Charlie Wimbush made everybody mad, he and Frank came near fighting in the ball room, Mr. Vickers came near beating him about his remarks about Jennie, in fact all the club, to a man, took it up but he lied out of it. Jennie had taken so much pains, painting the boys sashes & tied them on some one remarked how nice it was in her to take so much pains. Charley said, oh! Jennie was only courting notoriety. All the club was fighting mad but Mr. V got the first chance at him, he denied it & they let it drop but all believe he said it. I never saw Jimmie Logan as angry as he was.

Maggie Cade spent several days & do you know, she calls me Aunt Sallie, that is something new, Jennie went home with her, Maggie sent me some lovely moss & flowers. I though she was fair, but she is very dark, the blackest hair I ever saw, she dresses in horrible taste, she wore a lilac waist one day. I spent Saturday with Mrs. V to see her kin folks off & to console her, she spent Sunday with me. Jimmie Logan broke the thumb on his right hand last night in a playful scuffle with the boys, he can't use that hand at all & Ed hurt his back. I wonder how they can do so. I enjoyed my part of the frolic, everything went smoothly, even the girls brought gowns, all but Sallie. She hunted in the wardrobe & found one & never said a word about it. Sallie wanted to leave & go to Mrs. Cash's but the girls refused to pack her valise, so she got Whit to send her to Mrs. Cash's on Friday. Mrs. Cash gave a dining to Mr. Middleton's sister, Sallie says she told her it was an honor to have a visit from her & overwhelmed her with civilities, Sallie was so astonished to hear Mrs. Cash had a son, don't you know she had heard of Pat Cash? Dinner is ready, I wanted to finish up the frolic. Expect you have enough.

Love to all,

Your Mother

S. E. Vance

It is hot, hotter, hottest.

(This letter was edited for paragraphing to enhance readability)

"The time was when Vanceville was noted for the big balls and entertainment given there, but— well, young people are not as plentiful now."

The Bossier Banner-Progress, "Bossier Towns - 1900,"

March 29, 1956

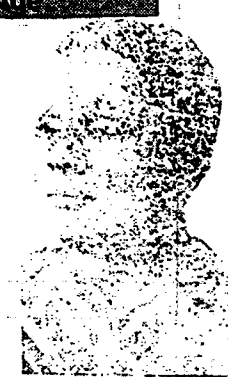
The *Bossier Banner* made mention of three tournaments held in the summer of 1886. A brief announcement was made in June of a tournament to be held at Lovely Point. The tournament marshals at Collinsburg published the rules of their September event for three consecutive weeks, but it received no after-event attention by the paper. (Lances were to be eight feet in length; posts would be fifty feet apart; and a lapse of twelve seconds was allowed from start to last post). The Knox Point tournament in July, which included glass ball shooting and music by the Shreveport brass band, was attended by a *Banner* reporter, and was well reported. The knight, "Roses," Mr. Hugh E. Atkins, bested the other ten knights to crown his queen, Miss Gracie Poole. The Vanceville tournament of 1891 got a brief invitation announcement, but no follow-up mention. It seems likely that these medieval contests of the 1880's and 1890's were more prevalent than were reported.

Star Cemetery, Caddo Parish, Shreveport, Louisiana
(Continued from Volume 35, 3rd Quarter 2001)

THE GENIE First Quarter 2002

31

ID	Surname	First Name	Middle Name	Title	Birth Date	Death Date	Age
1142	Canfield	L.	W.	Rev.	01 Mar 1869	23 Jun 1926	
912	Carpenter	Mary			1879	1943	
865	Carr	Pearl				03 May 1909	30 Yrs
119	Carter	W.	C.	Rev.	16 May 1897	12 Jan 1951	
525	Carter	Cecile	Wiley		22 Sep 1886	07 Jun 1945	
746	Carter	James				--- Sep 1921	33 Yrs
875	Carter	Ethel			20 Jul ---	15 Jun ---	
906	Carter	Ella	P.		01 Mar 1885	21 Dec 1942	
998	Carter	John				21 Oct 1920	35 Yrs
1011	Carter	Norah				12 May 1908	44 Yrs
249	Carter	Nadien			18 Feb 1890	05 Dec 1949	
1058	Carter	L.	A.		1843	02 Aug 1922	79 Yrs
1430	Carter	Butler			1870	1925	
1424	Carthan	Willie				1955	
211	Casey	Sally				07 Jan 1945	66 Yrs
434	Casey	Ella	Mae		12 Oct 1902	07 Jan 1961	
1418	Chambers	M.	E.				
1419	Chambers	Lain	V.		1902	1937	
1208	Chambers	Emma				31 Mar -47	81 Yrs
1373	Chambers						
218	Champion	William			18 May 1867	30 Mar 1927	
219	Champion	Nannie				22 Dec 1931	
203	Chandler	Seleste	Lewis		29 Jan 1891	23 Oct 1920	29 Yrs 3 mos 24 days
225	Chapman	H.	C.	Elder	18 Jun 1855	22 Dec 1931	76 Yrs
623	Chapman	Emily			12 Mar 1856	08 Apr 1942	
1426	Chapman	Semiell				1956	
1372	Chestang	Marcie	Fleming		14 Dec 1902	20 Aug 1943	
1379	Chestang	Australia				19 Jul 1919	
515	Chew	Nell			10 May 1846	20 Sep 1911	
737	Chew	Bennie				06 Jul 1923	
290	Chism	Leaner		(Mrs.)	03 Dec 1865	(Left Blank)	



Mrs. Margaret Chew, one of Shreveport's oldest citizens, who peacefully passed away April 10. She served as treasurer of the Baptist Women's Home Mission Convention 40 years.

**MRS. MARGARET CHEW *
ANSWERS FINAL CALL**

Was Veteran Treasurer of W. H. Mission Convention

Mrs. Margaret Chew, who survived her husband, Mr. Nelson Chew, twenty years, after an illness that covered a period of one year and five months, succumbed to its mortal ravages at 10:30 p. m. April 10th. At the time of her death she was 86 years old, and enjoyed the confidence and esteem of all who knew her.

She was a native of Kentucky. She was a pioneer member of Antioch

Baptist church, and for 41 years, was a staunch and consistent member of Avenue Baptist church from which she died. The illustrious decedent was treasurer of the Women's Home Mission Society of The Thirteenth District Association, and enjoyed a record of honesty, integrity and loyalty almost unparalleled; her continuous incumbency having covered a period of 40 years.

She is survived by two sons, Mr. George Chew, of this city, and Mr. Eddie Chew of Oklahoma City, Oklahoma; two daughters, Mrs. Hannah Chew-Hall of this city and Mrs. Emma Chew-Perkins of Los Angeles, California. Grandchildren surviving her are: Mrs. Flossie Chew-Manning, Los Angeles, Cal.; Mrs. Mildred Petras-Woods, Los Angeles, Cal.; Mr. Emerson Petras, Detroit, Mich.; Mr. Rinaldo Chew, this city; Messrs. Emerson Chew, E. Gaston Chew and Nelson Chew, Los Angeles, Cal.; Misses Nellie Mae and Thelma Chew of this city. Two great-grandchildren, also, survive her.

Her funeral was conducted at Avenue Baptist church, Rev. L. Allen, pastor, Wednesday, April 16, in the presence of a great concourse of sorrowing relatives and friends. Eloquent and impressive funeral orations were delivered by Rev. J. E. Evans, L. Allen and H. R. Flynn, her former pastor. Brief and pertinent eulogies were delivered by other clergymen and laymen whose knowledge of her womanly virtue, her Christian loyalty and her illustrious career evoked spontaneous praises and expressions of sorrow at her passing.

Her remains were interred in the Star cemetery, under direction of J. S. Williams & Son Undertaking Co.

*** Obituary of Mrs. Margaret Chew, an additional burial in Star Cemetery, Shreveport, LA.**

Source: *The Shreveport Sun*, Shreveport, Louisiana, page 1, column 7, dated 19 April 1930; microfilm Roll No. 494, Archives Room, Southern University Library, Southern University, Shreveport Campus, Shreveport, LA.

Star Cemetery, Caddo Parish, Shreveport, Louisiana

THE GENIE First Quarter 2002

32

ID	Surname	First Name	Middle Name	Title	Birth Date	Death Date	Age
291	Chism	A.	J.		11 Oct 1855	23 Apr 1919	
1129	Chriss	G. B.			22 Jun 1885	25 May 1911	
481	Christian	Thomas		Rev.		27 Jun 1885	47 Yrs
1417	Clack	Ethel			1881	1947	
370	Clark	Samie			01 Jan 1866	28 Aug 1924	58 Yrs
1026	Clark	Adline				02 Oct 1890	45 Yrs
262	Clark	Martha				30 Jan 1919	65 Yrs
1420	Clark	Ida	B.			1941	
1282	Clark	Julia				15 Sep 1917	58 Yrs
1329	Clark	Alice				17 Jun 1916	98 Yrs
658	Clay	Jerusha	W.		17 Jul 1878	13 Jan 1914	
300	Clayton	Prince			04 Dec 1862	08 Apr 1901	
696	Cleveland	Charley			06 Jan 1895	10 May 1945	
1095	Clifton	Albert				03 Aug 1925	19 Yrs
647	Close	Maria				14 Aug 1912	
1431	Coakdey	Joseph					
791	Coins	Eliza				02 Dec 1923	97 Yrs
934	Col--						
1428	Cole	Toni					
1429	Cole	Kitty			1857	1924	
459	Coleman	Ervin			23 Apr 1917	15 Oct 1943	26 Yrs
870	Coleman	Mary				14 Mar 1908	68 Yrs
885	Coleman	Roy			16 Oct 1893	24 Jul 1908	
907	Coleman	Mary				17 Apr 1950	
950	Coleman	Harriett				24 May 1907	88 Yrs
1301	Coleman	Mattie				28 Sep 1921	31 Yrs
208	Collins	Bennie	Mae		25 Aug 1911	12 May 1929	
878	Collins	John	D.		15 Dec 1855	30 Dec 1903	
248	Collins	Whit			16 June 1883	11 Jan 194?	
1422	Collins	Sarah					
1423	Collins	Sol			1884	1926	

Star Cemetery, Caddo Parish, Shreveport, Louisiana

THE GENIE First Quarter 2002

33

ID	Surname	First Name	Middle Name	Title	Birth Date	Death Date	Age
1110	Collins	Fred	D.		22 Nov 1896	11 Oct 1910	13 Yrs
1148	Collins	Mary				24 Sep 1928	
480	Colston	George				22 Apr 1883	
1050	Colter	James	B.		1879	1933	
768	Conley	William	C.			28 Jul 1923	72 Yrs
90	Cook	Isabella				19 Nov 1921	90 Yrs
102	Cook	Costello				20 Feb 1932	
378	Cook	Isaac				10 May 1902	39 Yrs
1014	Cook	Sarah				(Buried Deep)	
68	Cook	Alexandria			23 Dec 1898	18 Sep 1927	
993	Cooks	Ida				01 May 1920	40 Yrs
594	Cooks	Susie	Mae			24 Sep 1941	
629	Cooksey	Ella				19 Jan 1944	70 Yrs
1427	Cool	Alexandria			23 Dec 1898	1927	
181	Cooper	H.	C.			21 Dec 1932	62 Yrs
220	Cooper	J.	M.		16 Jul 1867	29 Apr 1912	
380	Cooper	Carrie	W.				
478	Cooper	Martha				22 Oct ?	90 Yrs
910	Cooper	Joseph				1904	6 mos
806	Cooper	Laura				19 Sep 1924	86 Yrs
807	Cooper	Hattie			26 Jan 1871	22 Jan 1935	
1425	Cooper	J.	H.			1912	
805	Cooper, Jr.	Virgil				01 Sep 1937	
690	Cornelius	J.	C.		1881	15 Mar 1925	
790	Cosper	Mattie			1874	1929	
1195	Cotton	A.	P.		16 Dec 1893	11 Sep 1912	
760	Cox	Mary				03 May 1924	
636	Crawf---	-orcie			11 Jan 186?	07 Nov 19??	
857	Crawford	Willie	B.		09 Nov 1891	18 Sep 1931	
1432	Crawford	Jennier			1898	1941	
630	Cullen	Anna	Mae		14 Mar 1921	08 Jun 1943	

Star Cemetery, Caddo Parish, Shreveport, Louisiana

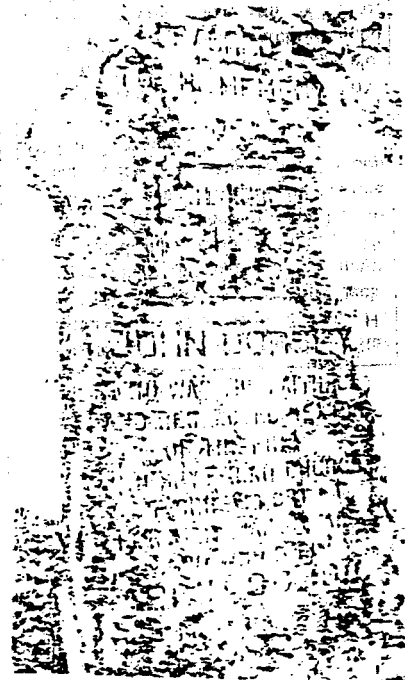
ID	Surname	First Name	Middle Name	Title	Birth Date	Death Date	Age
448	Cullens	Cremo	Kendall		06 Jan 1884	08 Jun 1917	
1281	Curry	Ethel			18 Jul 1891	06 Sep 1932	
995	Dabner	G.	A.			04 Jul 1920	36 Yrs
999	Dabner	Mary					
1078	Dailey	Thomas	W.			01 Dec 1894	35 Yrs
165	Daniels	Lucinda			05 May 1865	30 Mar 1942	
276	Daniels	Hernando				20 Apr 1922	70 Yrs
588	Daugherty	Sarah		(Mrs.)		01 Jan 1903	69 Yrs
589	Daugherty	Frank				23 Sep 1908	35 Yrs
147	Davage	Jerry	W.		02 Nov 1881	06 Mar 1931	
392	Davis	David			23 Oct 1899	14 Oct 1939	
393	Davis	Bennie			03 Sep 1906	12 Dec 1924	
972	Davis	Bessie	Jones		21 Feb 1906	25 Dec 1938	
577	Davis	Edward	B.		10 Feb 1912	25 Dec 1933	
622	Davis	Josephine			07 Dec 1878	03 Feb 1942	64 Yrs
701	Davis	Cager			02 Oct 1864	09 Feb 1929	
1434	Davis	Henry	Murry		1904	1942	
1155	Davis	Bettie			08 Oct 1875	12 Oct 1912	
1389	Davis	Mathew	S.		30 Mar 1877	18 Jun 1943	
1025	Day	Albert	Hanna		1845	07 Jul 1911	66 Yrs
867	Day	Thomas	Isaiah		05 Jan 1897	03 Aug 1918	
1162	Deloch	Mildred				01 Mar 1912	7 Yrs
786	Demos	Minnie	B.			24 Mar 1922	30 Yrs
1185	Dickerson	Easter			24 Feb 1888	03 Apr 1911	
884	Dickson	Mattie			14 Mar 1886	03 Jul 1954	
72	Dickson	Rachal				22 Nov 1945	92 Yrs
232	Dillard	Octavia				17 March 1926	
1164	Dillard	Alfred				23 May 1934	
504	Dillard, Jr.	Will			28 Dec 1928	02 Mar 1960	
637	Dixon	Millie				29 Jan 1942?	
1126	Dixon	Sophia	M.			21 Jun 1922	22 Yrs

Star Cemetery, Caddo Parish, Shreveport, Louisiana

THE GENIE First Quarter 2002

35

ID	Surname	First Name	Middle Name	Title	Birth Date	Death Date	Age
489	Dorsey	Willie	V.		26 Jun 1892	07 Mar 1953	
601	Dorsey					13 Nov 1940	25 Yrs
1192	Dorsey	John	W.		01 Mar 1887	23 Jan 1913	26 Yrs
977	Dorsey *	John				30 Apr 1911	
1433	Dotson	Authren	Lee				
655	Douglas, Sr.	Nelson			10 Dec 1885	12 Apr 1957	71 Yrs
1082	Dowden	Henry				26 Jan 1908	19 Yrs
1435	Dowden	Leon				1908	
1532	Dowden	Sena			10 Sep 1865	03 Jun 1934	
1533	Dowden	Leon			21 Jun 1899	13 Jun 1948	
342	Doyle	Henry	S.	D.D.	08 Jan 1867	03 Oct 1915	
343	Doyle	Annie	Walker		19 Aug 1869	12 Aug 1937	
344	Doyle	Albion	Walker		07 Feb 1896	25 May 1921	
345	Doyle, Jr.	Henry	Sebastian		09 Mar 1901	08 Apr 1950	
1047	Drawn	Minie				29 Oct 1888?	16 Yrs
1076	Drumette	Emma				07 Mar 1925	25 Yrs
354	Dudley	Lou				27 Apr 1926	73 Yrs
649	Dudley	Lawrence			1862	30 Jan 1918	
651	Dudley	Sam			--- Feb 1903	--- Mar 1943	
1317	Dudley	Sadie				28 May 1924	
1248	Duhart	Ella	T.		16 Apr 1905	01 Aug 1920	
526	Duncan, Jr.	Henry	W.		1901	1942	
192	Dunn	Matie			1884	23 Apr 1923	
676	Dupree	Rebecca			17 Apr 1871	28 May 1925	
584	Dyas	Rosie	Lee			24 Sep 1940	
721	Ealy	Solomon				31 Jan 1923	22 Yrs
2	Earl	Charlie			1897	1929	
830	Earnest	D.	E.			11 May 1923	35 Yrs
734	Easley	C.	S.			30 Sep 1922	38 Yrs
216	Edwards	Archie			29 Jan 1906	10 Aug 1926	
1411	Edwards	B.			1912	1938	



"SACRED
 TO THE MEMORY OF
JOHN DORSEY
 WHO WAS THE FAITHFUL
 AND RESPECTED SEXTON
 OF THE FIRST
 PRESBYTERIAN CHURCH
 SHREVEPORT, LA.,
 FOR VERY MANY YEARS
 AND WHO DIED
 APRIL 30, 1911."

Star Cemetery, Caddo Parish, Shreveport, Louisiana

THE GENIE First Quarter 2002

36

ID	Surname	First Name	Middle Name	Title	Birth Date	Death Date	Age
1131	Edwards	Sallie			16 Jun 1865	2- Oct 1911	
122	Eistner	Rosa				04 Jan 1940	60 Yrs
78	Elleby	Dobis				11 Oct 1943	62 Yrs
800	Ellis	Lula			--Aug 1886	22 Dec 1926	
1352	Ellis	Gladys	F.		1899	1944	
840	Ellison	Emma				09 May 1922	
1274	Elmore	Robert			21 Feb 1891	01 Sep 1916	
590	Emery	Pearl					
652	Emery					31 Aug --46	54 Yrs
731	Enmon	Willie				02 May 1923	56 Yrs
1139	Estus	Andrew			16 Oct 1855	18 Sep 1911	
1534	Etchers				11 Mar 1841	08 Sep 1910	
199	Evans	Andrew			26 Apr 1905	19 Feb 1941	
210	Evans	Chaney			10 Mar 1886	12 Nov 1935	
527	Evans	Jack				18 Oct 1918	80 Yrs
528	Evans	Andrew	J.			24 Feb 1912	6 Yrs
739	Evans	Ella				15 Oct 1923	44 Yrs
745	Farnell	Luke			04 May 1879	06 Mar 1921	
123	Ferguson	Harry			20 Mar 1882	18 Jan 1940	
1436	Ferguson	Elizabeth				1954	68 Yrs
15	Fields	Joe			03 Mar 1918	26 Jan 1946	
1371	Finnie	Edna				13 Jul 1923	70 Yrs
919	Fisher	Max A.			1870	18 Apr 1903	
583	Fisher*	Jackson	F.				
438	Flemming	Lou	Ella		10 Aug 1880	29 Apr 1951	
887	Flournoy	Katy				28 Oct 1902	18 Yrs 11 mos 13 days
573	Flowers	R.	A.	Mrs.		03 May 1935	
1	Flowers	Nona			27 May 1896	03 Jan 1929	
1189	Flowers	Ben			05 Sep 1871	11 Jun 1913	
645	Floyd	Daniel			02 Aug 1892	22 Dec 1945	
1437	Foppe	Will			1884	1939	

*Reportedly the only burial at Star Cemetery of a Civil War veteran. He served under the name of "Jerry Jackson" in the 97th Regiment, Company "F," United States Colored Infantry. He was born 16 Feb 1847 in Mobile, Alabama. On June 11, 1870, he married Anner Bailey (b 12 Aug 1854; d 7 Sep 1910 in Shreveport, LA).

Source: Jackson F. Fisher alias Jerry-Jackson's Civil War Pension Casefile No. C-2,471,732; National Archives and Records Administration, Attn: NWTCB, 700 Pennsylvania Avenue, NW, Washington, D. C. 20408-0001.

Star Cemetery, Caddo Parish, Shreveport, Louisiana

THE GENIE First Quarter 2002

37

ID	Surname	First Name	Middle Name	Title	Birth Date	Death Date	Age
23	Ford	Rachael			1865	1944	
663	Ford	Vollon	Standard		25 Dec 1925	21 Apr 1946	
1336	Ford	Gussie			? Jun 1906	01 Jun 1949	43 Yrs
98	Foster	Fanny			10 May 1885	05 Apr 1948	63 Yrs
188	Franklin	C.	J.		25 Dec 1888	28 Dec 1912	24 Yrs
189	Franklin	Thelma		(Miss)		26 May 1913	4Yrs 7mos 15 days
1137	Franklin	Wm	J.		09 Aug 1903	16 Sep 1911	
1138	Franklin	Douglass	M.		03 Sep 1905	16 Sep 1911	
1365	Frasure, Sr.	Holcom			10 Jun 1864	20 Jul 1918	
1287	Frazier	Dora		(Mrs.)	27 Jan 1877	23 May 1919	
787	Freeman	Pollie			1871	27 Sep 1932	61 Yrs
1118	French	Matilda			17 Mar 1890	21 Jun 1911	
1160	Fresman	Dinah				25 Mar 1912	85 Yrs
665	Fryer	Sam			06 Mar 1857	08 Oct 1922	65 Yrs
1296	Fulcher	Daisy				11 Jun 1918	23 Yrs
921	Fuller	W(illiam)				10 Nov 1904	28 Yrs
1027	Fuller	Lawson				29 Mar 1907	
1117	Fuller	Elias				05 May 1911	58Yrs
1204	Fuller	Mary				18 Oct 1913	66Yrs
1260	Gaines	Lydia			1835	27 Dec 1915	
682	Gallagher	Prince				24 Sep 1916	39 Yrs
1232	Gallier	?			20 Nov 1866	27 Oct 1888	
1238	Gant	Richard				04 Feb 1915	28 Yrs
1443	Garland	Bonnie	K.			1954	
1291	Garner	Josephine		(Mrs.)	05 May 1859	13 Jan 1919	
1347	Garrison				28 Oct 1889	04 Aug 1923	
60	Gaskin*	Mattie				22 Feb 1930	76 Yrs
62	Gates	Sophie			15 Jul 1867	12 May 1930	
63	Gates	Tom				20 Jul 1938	
1438	Gaues (?)	Julia					
820	Gay	Ella			1885	27 Jan 1924	

* "DEATH CLAIMS NOBLE WOMAN"

"Mrs. Mattie Gaskin, aged and venerable citizen of this city, after a very brief illness, passed away at her residence in Christian street, Saturday, Feb. 22.... She was a pioneer member of Antioch church....

"The sad funeral rites were conducted at Antioch Baptist church Monday, February 24. Revs. Samuels, Hicks, Capers and May delivering solemn, but eloquent funeral orations, who, in plain and unmistakable terms praised her illustrious career, and recommended it for the emulation of her survivors, both old and young.

"The popular and efficient firm of J. S. Williams and Son, undertakers, had charge of her remains and conducted the sad burial rites with becoming grace and dignity. Interment in the Star Cemetery."

Source: *The Shreveport Sun*, page 1, column 7, dated March 1, 1930; microfilm Roll No. 494, Archives Room, Southern University Library, Southern University, Shreveport Campus, Shreveport, LA 71107.

Star Cemetery, Caddo Parish, Shreveport, Louisiana

THE GENIE First Quarter 2002

38

ID	Surname	First Name	Middle Name	Title	Birth Date	Death Date	Age
246	George	John			05 Sep 18??	31 Jul 194?	
271	George	Isebell			1882	27 May 1948	
108	Gibson	Henry			19 Feb 1898	24 Feb 1949	
39	Gibson	Louis				03 Nov 1906	59 Yrs
221	Gideon	Hettie				05 Dec 1912	60 Yrs
24	Gideon	Callie				09 Sep 1944	71Yrs
327	Gideon	Saddie			28 Nov 1902	02 Aug 1945	43 Yrs
1240	Gideon	Eddie				05 Jan 1923	21 Yrs
1143	Gilford	Jenieve				23 Jun 1908	
1441	Gilliam	Rosie	Lee		1915	1951	
1440	Gilmer	Jane			1865	1938	
373	Gilmore	Freddy	E.		08 Sep 1892	26 Jun 1894	2 Yrs
374	Gilmore	Alberta			05 May 1896	27 Aug 1896	3 mos
375	Gilmore	Roscoe	J.		19 Oct 1881	23 Jul 1903	21 Yrs
376	Gilmore	John	B.			22 Jan 1923	70 Yrs
377	Gilmore	Francisa				28 May 1896	35 Yrs
379	Gilmore	Howard	F.		12 Mar 1885	02 Jul 1948	
1229	Gilmore	Elbert			10 Sep 1893	20 Dec 1932	
1230	Gilmore	Edmond				03 May 1932	
1233	Gilmore	Morris			20 Mar 1859	04 Jan 1914	
1442	Gilmore	J.	B.			1896	28 Yrs
1315	Gilyard	Chard				25 Apr 1924	20 Yrs
1156	Givens	Robert				15 Jul 1911	97 Yrs
110	Glenn	Zilla			1885	1942	
185	Glenn						
81	Glover	Fannie				16 Jun 1919	40 Yrs
1062	Good	Mary	Blanch		10 Jun 1878	30 Nov 1935	
542	Goode	A.	B.	Mrs.	1881	1938	
844	Goodson	Weaver				13 May 1926	41 yrs
712	Gordon	Mary	E.			23 Aug 1921	45 Yrs
617	Gordon	Henry			1887	18 Aug 1941	74 Yrs

(To be continued)

J. P. VANCE AND HIS SUCCESSION

By Dale Jennings

Joseph P. Vance composed his brief will at Plain Dealing in Bossier Parish, Louisiana, on November 18, 1901. "I give Dr. Tom Vance my Plain Dealing property; I want Eliza James to have the remainder of my real estate, and to hold absolutely. I appoint Dr. Tom Vance my sole executor of my will." He made an endorsement on the back. "I want to pay them that helped me in my old and helpless days." (signed) Jo Potiler Vance. A bachelor, Joseph died without forced heirs at his home in Plain Dealing on May 21, 1902. He was survived by his brother Tom Vance of nearby Webster Parish; and in South Carolina by two brothers, Samuel F. and William T. Vance; a sister, Mrs. Laura Irby; and a nephew by one of his two brothers who died in the Civil War, Henry Y. Vance. His South Carolina relatives hired a local lawyer, Joannes Smith, who on their behalf opposed the probate of the will: "They allege that the legacy made to said Eliza James, a full woman of color, is void and illegal, and ought to be set aside, because said Eliza James is the bastard daughter of the deceased, begotten by him from a colored woman named Jane; that said Eliza James was born during the year, 1862, and is by law incapacitated from receiving anything by testament." Although Eliza had legal representation, the court ruled in favor of her opponents.

Joseph Vance's Scots Irish ancestors were probably part of the eighteenth century migration down the "Great Road" out of Pennsylvania into the Shenandoah Valley of Virginia. Many of the Vances, to include Samuel Vance, settled in North Carolina. Several of Samuel's sons, including Nathaniel and Samuel, Jr., went into northwestern South Carolina after the American Revolution. Many of Nathaniel's descendants - the first in 1840 - migrated from there directly to Bossier Parish, Louisiana. The only descendants of Samuel Vance, Jr., to remove to Louisiana were two grandsons, Joseph Potiler (Patillo) and Thomas Jefferson, the sons of Robert S. Vance. "Jo" Vance came to Bossier Parish at about age twenty-seven in 1854. Earlier Vances to the area had forged business, social and marital ties to the Gilmers, a prominent family of planters in the area of Collinsburg and present-day Plain Dealing. J. P. Vance was enumerated with George E. Gilmer, as Gilmer's overseer, in the census of 1860. The 1860 slave census shows that Gilmer possessed 134 slaves. Joseph Vance had none, and was probably never to own any.

When the state of Louisiana went out of the Union in April 1861, George Gilmer did not wait for Bossier units to form, but went across the Red River and joined a Caddo Parish company. Joseph's brother Doctor Tom Vance, a recent arrival from South Carolina, and an ardent secessionist, did the same. J. P. joined the Marks Guards, a Bossier company, in January 1863. His regiment made up a part of the Confederate forces contesting the Federal occupation of South Louisiana. He was captured in heavy fighting in the Battle of Irish Bend on Bayou Teche outside of Franklin, Louisiana, in April 1863. He was exchanged; came back to Bossier Parish; joined the Bossier Guards, a cavalry company just formed, and served with that unit until the end of the war.

Although never attaining the affluence of the Gilmers and some of the other Vances, Jo Vance did accumulate a considerable amount of property. Described as a farmer, he typically would have managed his several farms, share cropped out to Black tenants. In the 1870 census, J. P. Vance is shown to be a 40-year-old farmer and sole occupant of his household. Of eight consecutive Black neighbors, five were Smith families (the enumerator made no distinction between Blacks and Mulattos). Typically, White landowners lived amidst their sharecropper families. One of these households was headed by Jane Smith, who was 25, "keeping house," and born in Alabama. Jane's only other household member was Eliza Smith, age 10, born in Louisiana.

The Smiths were probably former slaves of the Gilmers, and related by blood or marriage. Forty-five-year-old "M." Smith was head of the household adjacent to J. P. Vance. The 1880 census would show by family composition that a "Marywether" Smith of that decade was the same person as the M. Smith of 1870. He and Jane were both shown to have been born in Alabama by the 1870 census, but in Georgia by the census of 1880. The Gilmers had sold their land in these states and removed to Louisiana with their slaves about forty years before the latter date. George Gilmer made his will just before leaving for the war in 1861. He named several slaves whom he wished to go to his cousin, Peachy R. Gilmer, rather than into his estate. One of these was the slave Meriwether. George Edwin Gilmer was killed in the Battle of Sharpsburg (Antietam) in Maryland.

Eliza "Vance" was married on December 26, 1878, to S. T. James. Named as Eliza Vance on the marriage certificate, she erroneously signed it "Eliza James." J. P. Vance sold several tracts of land to Jane, Eliza, and S. T. James between 1879 and the time of his death. In the conveyances, Eliza was named as Eliza Smith, wife of S. T. James, or Turner James. The total acreage was approximately 450 acres and was typically sold in 40 and 80-acre parcels for from \$200 to \$400. During the same period, J. P. sold several other tracts of land to White buyers. The 1880 census shows "Turner" James as a 21-year-old Mulatto, born in Alabama, and his wife, "Liza," as a 16-year-old Mulatto, born in Louisiana; with a 1-year-old daughter, "Burdie," also born in Louisiana. Jane Smith, living nearby, is shown as a 45-year-old widowed Black woman, enumerated with J. P. Vance; relationship to head of household, cook.

J. P. Vance's succession was contested at length. When the annulment of Eliza's legacy was upheld in district court, S. T. James appealed to the state supreme court. The legal standard by which illegitimate children could inherit as "natural children" was that the father must have acknowledged them to be his. Witnesses testified that it was generally understood and reputed that Eliza was the daughter of Vance, and she had been heard called Eliza Vance in the Black neighborhood. However, only one witness testified to having heard this from Mr. Vance. Mr. R. E. Lee, a White friend, recalled that in 1894 or 1895, J. P. had lamented to him about being alone and without family. He blamed the doctors, who had advised him not to marry because a disease he had contracted early in life might afflict his children. He said he knew now that the doctors did not know what they were talking about, as his children were not afflicted, "for there is Turner's wife as healthy as anybody."

The supreme court upheld the lower court in its interpretation of the law. A casual inference to the fatherhood of a child did not suffice as an open acknowledgement. By declining to testify, Eliza did not help her cause.

In 1904, S. T. James sued the succession for \$1,000. This was for extensive assistance given Mr. Vance during the last several years of his life, for which the family was not compensated. The suit was defended in court by the attorney for the executor, on behalf of the Vance heirs. The defense established that J. P. Vance had been quite well off, and was always known to pay his debts promptly. He had been a successful farmer, and a partner in "Keeth and Vance," a store in Collinsburg, during much of the 1880's. By the mid-1890's, he had divested much of his property and retired to a farm near Plain Dealing, renting part and farming out the remainder on shares. About two years before his death, his health declined further and he moved into town. The defense sought to persuade the jury that the plaintiff and his family had already been well compensated through the purchase of considerable property from Mr. Vance at far less than its true value. Mr. James enumerated the work and personal care that he, his wife, daughter Bertie, and son-in-law, "Lee," had rendered Mr. Vance while he was enfeebled. He testified that his motivation was that Mr. Vance was in need of help; was the father of his wife and a good man; and that he believed he would be remembered and compensated later. Under examination, Turner James stated that he had paid fully for the eighty acres and gin purchased from the deceased; that his investment in a livery stable in Shreveport was small; and that he did not know how much money he had in the Merchants & Farmers Bank, but he could find out. Mr. James acknowledged that two of his four children, daughters, were off in school in a distant state.

The case was decided in favor of the defense and against Mr. James. He appealed to the appellate court, which reversed the lower court's decision. James was awarded a compensation of \$300 and the cost of litigation in both courts. S. T. James later bought 400 of the 520 acres denied Eliza, when it was sold by the South Carolina heirs at Sheriff's succession sale.

Eliza is buried in an iron-fenced family section of the Mt. Zion Cemetery just north of Plain Dealing. Her distinctive shaft configured grave marker reads, "Eliza V. / Wife of S. T. James / Born in 1862 / Died Sep 1, 1908." Just outside the fence is a nice, broken headstone with clasped hands in relief, which reads, "Jane Smith / (Died) Feb 18, 1892 / Aged about 65 years." Also found inside the fence are three other gravestones. One reads, "Pattie / Daughter of S. T. & E. V. James / Mar 23, 1891 / Feb 22, 1907." Another, "Bertie / Wife of C. A. Lee / Nov 4, 1879 / Jan 23, 1907 / INFANT." The other reads, "Laura / Daughter of S. T. & E. V. James / Wife of John Turner / Oct 16, 1883 / Oct 11, 1905." When Eliza died in 1908, she was survived by her husband, a son, two daughters, and two of Bertie's children. J. P. Vance is buried a short distance south of Mt. Zion, among a great many Gilmers and Vances, in the oldest section of the Plain Dealing town cemetery. The cemetery began as the Gilmer-Vance family burying ground just behind George O. and Martha Gilmer's Plain Dealing Plantation home. The site is now located on the northern edge of the little town of Plain Dealing.

Name and Address of Genealogist:

VERNELLE SEEFELDT ROSE

2933 JONATHAN LANE

SHREVEPORT, LA.

71108

Phone: 318-687 3673

8 Wilson PATTERSON-408

Born: 1781
Place: , Wake, N C , USA
Marr: 23 JUN-1803 [85]
Place: , Wake, N C , USA
Died:
Place:

Jonas PATTERSON-358

Born: 23 JAN 1818
Place: Greensboro, , N C U, USA
Marr: 1837 [77]
Place: Decatur, , Alabama, USA
Died: 5 AUG 1868
Place: Charleston, , Ark, USA

9 Charity WALKER-409

Born: 1786
Place: , Wake, N C , USA
Died:
Place:

2 Thomas Martin PATTERSON-348

Born: 18 OCT 1838
Place: , McNairy, Tenn, USA
Marr: 31 DEC 1867 [75]
Place: Henderson, , Tenn, USA
Died: 3 MAY 1924
Place: , Chester, Tenn, USA

10 Griggs PUTMAN-414

Born: 1778
Place: , Bute, N C , USA
Marr: [86]
Place: , Rutherford, N C
Died: Before 1840
Place: , Morgan, Al

5 Nancy PUTMAN-359

Born: 15 OCT 1815
Place: Decatur, , Al, USA
Died: 27 JUL 1862
Place: Charleston, , Ark

11 Sally UNKNOWN-417

Born:
Place: Rutherford, , N C , USA
Died:
Place:

1 Nancy Cora Alice PATTERSON-285

Born: 3 OCT 1868
Place: , McNairy, Tn., USA
Marr: 12 NOV 1889 [65]
Place: Jackson, , Ten, USA
Died: JAN 1940
Place: , Chester, Tn., USA

Spouse:

George Anderson TAYLOR-284

12 Joseph TILLMAN-418

Born: 19 APR 1789
Place: , Chatham, N C , USA
Marr: 2 MAY 1810 [87]
Place: , Chatham, N C
Died:
Place: , Weakley, Tenn

6 John TILLMAN-373

Born: 22 NOV 1815
Place: , Chatham, N C , USA
Marr: 10 NOV 1839 [79]
Place: , Marshall, Tenn, USA
Died: 25 JAN 1865
Place: Henderson Co, , Tenn

13 Winnie FIELDS-419

Born: 15 MAR 1781
Place: , Chatham, N C , USA
Died:
Place: , Weakley, N C

3 Winnie Araminta TILLMAN-349

Born: 4 FEB 1846
Place: , Henderson, Tenn, USA
Died: 23 JUL 1919
Place: , Chester, Tenn, USA

14 Edom EDWARDS-420

Born: 1790
Place: , Chatham, N C , USA
Marr: [88]
Place: , Chatham, N C
Died:
Place:

7 Nancy EDWARDS-374

Born: JUN 1818
Place: , Chatham, N C , USA
Died: 24 SEP 1880
Place: Henderson, , Tenn

15 Mary BRAY-421

Born: 1790
Place: , Chatham, N C , USA
Died:
Place:

**The Dewey Decimal Numbers: Benefits You
Submitted by Faedra Wills**

General information about Louisiana is found in 976.3. Knowing the Dewey Decimal number for a parish or a series of parishes within this state makes it easier for a researcher to browse the shelves. The following chart lists Louisiana's parishes in alphabetical order followed by Dewey Decimal Number.

Acadia	976.356
Allen	976.358
Ascension	976.319
Assumption	976.343
Avoyelles	976.371
Beauregard	976.359
Bienville	976.393
Bossier	976.397
Caddo	976.399
Calcasieu	976.354
Caldwell	976.376
Cameron	976.352
Catahoula	976.374
Clairbourne	976.394
Concordia	976.373
DeSoto	976.363
East Baton Rouge	976.318
East Carroll	976.382
East Feliciana	976.316
Evangeline	976.357
Franklin	976.377
Grant	976.367
Iberia	976.349
Iberville	976.344
Jackson	976.392
Jefferson	976.338
Jefferson Davis	976.355
Lafayette	976.347
Lafouche	976.339
La Salle	976.375
Lincoln	976.391
Livingston	976.314

Madison	976.381
Morehouse	976.384
Natchitoches	976.365
Orleans	976.335
Ouachita	976.387
Plaquemines	976.337
Pointe Coupee	976.3454
Rapids	976.369
Richland	976.386
Sabine	976.362
Saint Bernard	976.336
Saint Charles	976.333
Saint Helena	976.315
Saint James	976.331
Saint John the Baptist	976.332
Saint Landry	976.346
Saint Martin	976.348
Saint Mary	976.342
Saint Tammany	976.312
Tangipahoa	976.313
Tensas	976.379
Terrebonne	976.341
Union	976.389
Vermillion	976.351
Vernon	976.361
Washington	976.311
Webster	976.396
West Baton Rouge	976.345
West Carroll	976.383
West Feliciana	976.317
Winn	976.366

The following chart lists the states in the U.S. in alphabetical order followed by their Dewey Decimal Number.

Alabama	976.1
Alaska	979.8
Arizona	979.1
Arkansas	976.7
California	979.4
Colorado	978.8
Connecticut	974.6
Delaware	975.1
Florida	975.9
Georgia	975.8
Hawaii	996.9
Idaho	979.6
Illinois	977.3
Indiana	977.2
Iowa	977.7
Kansas	978.1
Kentucky	976.9
Louisiana	976.3
Maine	974.1
Maryland	975.2
Massachusetts	974.4
Michigan	977.4
Minnesota	977.6
Mississippi	976.2
Missouri	977.8
Montana	978.6
Nebraska	978.2

Nevada	979.3
New England	974
New Hampshire	974.2
New Jersey	974.9
New Mexico	978.9
New York	974.7
North Carolina	975.6
North Dakota	978.4
Ohio	977.1
Oklahoma	976.6
Oregon	979.5
Pennsylvania	974.8
Rhode Island	974.5
South Carolina	975.7
South Dakota	978.3
Tennessee	976.8
Texas	976.4
Utah	979.2
Vermont	974.3
Virginia	974.6
Washington	979.7
Washington DC	975.3
West Virginia	975.4
Wisconsin	977.5
Wyoming	978.7

BOOK REVIEWS

By Herman Weiland

Donated by Heritage Books, Inc

TITLE: Hawley, Halley, Holley - A Resource Book by Laura Hawley

ORDER FROM: Heritage Books, Inc., 1540-E. Pointer Ridge Pl., Bowie, MD 20716
www.heritagebooks.com or CC Orders 1-800-398-7709

COST: \$ 33.50 ppd. Order # H 1804

The authors ancestor was a John Hawley who married Hester Burch, in Accokeek, Maryland, on March 4, 1712. This resource book is the result of her gathering of information about this John and in that quest she has accumulated a vast amount of information about the Hawley family and some 138 different families with identical or similar surnames. Family legend has it that three Hawley brothers came from England to the colonies. One settled in Massachusetts, one in the Middle Atlantic region, and one in the Carolinas. This book concentrates on the area of England, Maryland and Virginia.

The purpose of this work is to help individuals researching these and similar surnames to identify target individuals easily, regardless of the surname changes. Each basic person for which family ties are ascertainable has been assigned a Research Number (Rsh) and these are in the first 56 pages of the book.

The remainder of the book is the research that has been accomplished with a reference to the Rsh number of that person. Many sources were used to accumulate this information and if you have Hawley, Halley, Holley or any other variant spelling of the name you would need to refer to this book. There are some 36 pages of information about the individuals who married Hawleys including Birdwell, Burch, Colvin, Davis, Dickerson, Dillard, Downs, Emerson, Gilbert, Hutchinson, Oden, Perkins, Trexier and the Woolridge Families. The book is indexed by name as well as by Rsh number making it quite easy to find all references to a particular individual. 2001, 5.5 x 8.5, 339 pp., indices, paper cover.



Exchange Periodical Review

Compiled by Herman Weiland

Many of the periodicals we receive provide up-to-date ideas on how to solve your research challenges.

Always search the periodical published in your geographical interest area, but don't overlook other periodicals that may include articles of general interest to the researcher or about families that have migrated. These periodicals are found at the Broadmoor Branch Library, Shreveport, in the Genealogy Section.

"The Hoosier Genealogist" Vol. 41.3, September 2001 published by the Indiana Historical Society has on pages 144-151 and 159-162 articles on The Historical Genealogy Department of the Allen County Public Library. A detail on each of the collections is given. The Library serves over 100,000 genealogists each year. Pages 179-184 contain an article on **African-American Pioneers**: A slave owner, **Paul Mitchum**, born c1749 probably in Goochland Co., VA and his wife **Susannah Meeks** had numerous slaves both in Goochland and Surry Co. NC and later in Hardin Co. KY and Harrison Co., IN. They began early on freeing their slaves and the majority assumed the Mitchum name. So if you are searching in these areas for Mitchum, you need to get this periodical and read this very informative article.

"Tennessee Ancestors" Vol. 17.2, August 2001 published by the East Tennessee Historical Society has on pages 131-139 a Roster of Confederate soldiers who died during the Campaign of East Tennessee, 1 Nov 1863 - 1 April 1864. These Soldiers were from the **Mississippi** 13th, 17th, 18th & 21st Infantry and from the **Georgia** Volunteer Infantry.

"Texarkana USA Quarterly" Vol. XXVII.3 & 4, Fall & Winter 2001 published by the Texarkana USA Genealogical Society has on page 59 a list of the family names included in their new book, **Family Bible Records Vol. I**. These are records from 143 Family Bibles. Check this listing and if you decide to order the book, instructions are given.

"Panning For Nuggets of Old" Vol. 22.2, Fall 2001 published by the Crawford County Genealogical Society, Alma, Arkansas has on pages 29-35 interesting facts on the **Joshua Smalley Family** originally from Tennessee, Jackson Co. 1840, Hamilton Co. 1850, Marion Co. 1860 before the move to Franklin Co., Arkansas. If you have Smalley's in your line check this out.

"The Treeseacher" Vol. 43.4, Winter 2001 published by the Kansas Genealogical Society, Dodge City, Kansas has on pages 132-135 an article entitled: **Wanted: Men to Work My Mountains - The Germanna Colonies**. This is the handout given at the KGS October 2001 Seminar having to do with the **Germanna Colonies** and **Virginia** Governor **Spotswood's** role in the history of those colonies. Lists of the early families are included as is a Bibliography.

"The Melting Pot" Vol. XXIV.2, November 2001 published by the Melting Pot Genealogical Society, Hot Springs, Arkansas has on pages 101-107 the Record of the **Young Family**. **John Young**, born July 14, 1763 and **Margaret Galbraith**, his wife, bore November 23, 1770. They were married February 8, 1788 and lived in **Hawkins County, Tennessee**. This record lists the children and grandchildren of this couple.

Name and Address of Genealogist:

VICTOR CHAMBLISS ROSE
2933 JONATHAN LANE
SHREVEPORT LA.
71108

Phone: 318-687-3673

2 James McCuller BERRY-145 Born: 22 OCT 1822 Place: Claiborne, La. Marr: 27 SEP 1848 [34] Place: Red Lick, Jeff., Ms. Died: NOV 1888 Place: Delhi, La., Age 64	William BERRY-187 Born: About 1800 Place: Washington, Virginia Marr: 9 DEC 1819 [47] Place: Hempstead, Ar. Died: Place: Unknown	8 James Sr. BERRY-273 Born: About 1773 Place: Washington, Co, Va. Marr: 20 AUG 1798 [632] Place: Blount, Tn. Died: 1814 Place: Williamson, Tn.
1 Rosalie BERRY-66 Born: 8 NOV 1854 Place: Providence, La. Marr: 15 JUN 1876 [18] Place: Delhi, Richland, La. Died: 17 FEB 1928 Place: At Dau. Rosalie, La. Spouse: John Jr. William WILLIS-72	5 Susannah Adeline DREW-188 Born: 9 AUG 1804 Place: Wilson, Tn. Died: Place: Alive 1830, Clai. Pr La	9 Rebecca REGAN-1786 Born: About 1780/81 Place: , Birth Va? Died: Place: , #2Marriage
3 Laconia Smith CHAMBLISS-146 Born: 18 OCT 1823 Place: , Jefferson, Ms. Died: 16 FEB 1888 Place: Bible Date, Delhi La	6 Peter Corbin CHAMBLISS-189 Born: About 1793 Place: Orangeburg, So. Car. Marr: 23 NOV 1815 [48] Place: , JEFFERSON, MS. Died: 4 MAY 1855 Place: Taylor Co., Georgia	10 Newitt James DREW-300 Born: 26 FEB 1772 Place: Southampton, Va. Marr: 7 JUL 1799 [73] Place: , Wilson, Tn. Died: 26 MAY 1842 Place: Minden, Clai., La.
	7 Drusilla Jones HARPER-190 Born: 1 MAR 1800 Place: Bible Rec., Ms. Died: 1 APR 1865 Place: Port Gibson, Clai., US	11 Sarah A. MAXWELL-301 Born: 23 MAY 1781 Place: , Kentucky ? Died: 22 MAY 1860 Place: Minden, Clai., La.
		12 Peter CHAMBLISS-345 Born: About 1755 Place: , Prince George, Va. Marr: 1891 [81] Place: ORANGEBURG, SO. CAR. Died: 1820 Place: Red Lick ?, Ms.
		13 Elizabeth CORBIN-346 Born: About 1773 Place: , So. Car. Died: After 1798 Place: , So. Car.
		14 Jesse HARPER-2297 Born: 1734 Place: Virginia Marr: 1765/70 [796] Place: Mississippi, Jeff. Co Died: After 1802 Place: Jefferson Co.
		15 Martha JONES-2298 Born: 1755/60 Place: Ms. ? Died: Place:

Oak Ridge Baptist Church Cemetery
Winnfield, Winn Parish, Louisiana
By Willie Ray Griffin

The Oak Ridge Baptist Church was conceived and Organized between 1894 and 1900. In 1908 the members bought land and erected a permanent site.

This Black church is located approximately 2.9 miles east of the town of Calvin, LA on LA 156. Turn north onto the Oak Ridge Church Road traveling about 4 tenths of a mile, you will find the church sitting on the left side of the road adjacent to the Cemetery.

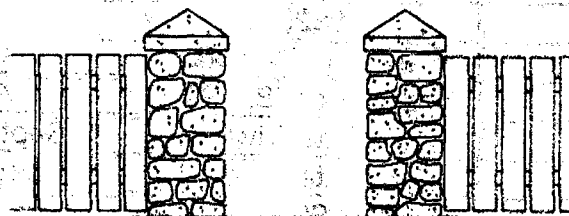
#	Name	Date of Birth	Date of Death
1	Alexander, Fulton, Jr.	1944	1996
2	Batts, Idell	November 18, 1914	January 28, 1982
3	Bertha, Mrs.	August 10, 1899	July 25, 1969
4	Booker, Eva M.	October 2, 1918	September 21, 1991
5	Booker, Noah	No Date Given	October 29, 1915
6	Booker, Sr., Mr. Fred	November 5, ?????	No Date Given
7	Booker, William	1881	January 1, 1956
8	Boston, Christine	1907	1980
9	Butler, Elsie	No Date Given	No Date Given
10	Cole, Mr. Willie Charles	October 6, 1954	July 1, 1992
11	Coleman, Mary	May 27, 1910	October 19, 1973
12	Collins, Mr. Elijah	March 21, 1949	November 29, 1994
13	Cooper, Gertrude Morgan	February 15, 1892	No Date Given
14	Cooper, Johnnie B.	December 4, 1899	March 15, 1976
15	Cunningham, B. Inez	No Date Given	July 18, 1940
16	Cunningham, Cephas L.	1947	1995
17	Cunningham, Fannie	No Date Given	July 18, 1911
18	Cunningham, Jim	No Date Given	March 14, 1966
19	Cunningham, L. V.	1936	1998
20	Cunningham, Marilyn B.	October 20, 1956	January 4, 1996
21	Davenport, Mollie	July 1, 1888	March 11, 1955
22	Davis, Arlevia	1800 ?	1936
23	Davis, Cheff	1800 ?	1933
24	Davis, John David	October 7, 1932	October 16, 1954
25	Davis, Luddie B.	February 23, 1905	September 29, 1991
26	Davis, Odis	June 27, 1905	January 15, 1974
27	Davis, Porter	December 17, 1915	October 13, 1962
28	Drawhorne, Allie Bell	July 23, 1910	January 9, 1990
29	Drawhorne, Leo	October 23, 1921	May 8, 1985
30	Dunbar, Jenatt	July 15, 1883	July 13, 1973
31	Edward, M. W.	October 20, 1888	January 22, 1918
32	Edward, Mary Willie	1890	1959
33	Edward, Tom Horace	February 14, 1925	May 27, 1961
34	Edwards, Coca J.	1908	1991

Oak Ridge Baptist Church Cemetery
Winnfield, Winn Parish, Louisiana

35	Edwards, Henry	February 24, 1986	October 20, 1970
36	Edwards, Kenneth C.	1911	1984
37	Edwards, Mary	December 25, 1901	August 7, 1933
38	Edwards, Odie B.	August 24, 1903	December 3, 1966
39	Edwards, Odie Lewis	June 1, 1944	May 17, 1976
40	Edwards, Rev. Louis	No Date Given	August 15, 1912
41	Edwards, Rev. Willie D.	June 30, 1888	January 9, 1967
42	Edwards, Velma P.	February 20, 1921	June 30, 1975
43	Ethridge, Forset	1896	No Date Given
44	Fields, James Donald	April 13, 1933	August 29, 1958
45	Ford, Martiin	1865	1955
46	Foster, Mrs. Effie	No Date Given	No Date Given
47	Gans, Janie	December 10, 1884	January 29, 1946
48	Gibson, Mrs. Mary L.	April 23, 1921	June 11, 1996
49	Griffin, D. Artency	October 10, 1920	September 21, 1991
50	Hall, Mrs. Beborah R.	January 25, 1972	June 2, 1997
51	Hartwell, Golphin	1875	1939
52	Hartwell, Orlie	February 4, 1875	March 10, 1939
53	Henry, Hosea	1925	1987
54	Hobdy, Viola H.	February 10, 1905	April 30, 1905
55	Jackson, Candy	September 28, 1970	April 5, 1995
56	Jackson, Elvie	No Date Given	September 17, 1915
57	Jackson, Zelma	No Date Given	August 20, 1913
58	Jacob, Tammie Ann	1900	1920
59	Jacobs, Rev. Robert	August 12, 1834	October 10, 1918
60	Jacobs, W. M.	July 12, 1877	December 27, 1897
61	Knox, Amos	December 25, 1894	August 6, 1982
62	Knox, Mary	May 17, 1907	July 22, 1991
63	Lewis, Carlos	May 7 1971	May 7, 1974
64	Lewis, Cephas	December 10, 1879	May 10, 1973
65	Lewis, Cora	1890	1958
66	Lewis, Deacon Odis Bys	1844	1909
67	Lewis, L. T.	November 27, 1916	April 14, 1973
68	Lewis, Minnie Ola	1915	1915
69	Lewis, Sanforce	1929	1986
70	Lewis, William C.	May 3, 1927	May 24, 1980
71	Mallory Twins	No Date Given	December 7, 1927
72	Mallory, Elijah	1905	1987
73	Mallory, Elmo	1935	1984
74	Mattox, Ernest J., Jr.	July 5, 1967	January 23, 1968
75	McArter, Willie	February 29, 1914	November 30, 1984
76	McDade, Mary	1869	1952

Oak Ridge Baptist Church Cemetery
Winnfield, Winn Parish, Louisiana

77	McHenry, Ms. Hattie J.	December 21, 1993	April 7, 1998
78	Moore, Fred	December 17, 1900	June 21, 1992
79	Moore, Othella	July 19, 1900	February 15, 1990
80	Perry, Fred	February 4, 1921	April 5, 1977
81	Peters, Willie	1920	1986
82	Redmond, Annie L.	1924	1992
83	Shaw, Letha M.	February 22, 1911	November 29, 1987
84	Smart, Ozeal	June 15, 1902	December 13, 1979
85	Stephens, Ruby	December 29, 1927	May 15, 1996
86	Turner, Phene	1888	October 14, 1958
87	Turner, Ralph, Jr.	April 17, 1945	July 2, 1988
88	Turner, Sis. Zenobia Knox	October 8, 1924	November 27, 1985
89	Turner, Vida K.	September 1, 1896	February 16, 1977
90	Ward, Ida Mae	1896	October 26, 1919
91	Ward, Rev. M. J.	November 22, 1900	No Date Given
92	Winters, Charles M.	June 15, 1892	October 12, 1910



SURNAME INDEX

(A surname may appear more than once on a page.)

Adams 20, 23, 24, 25	Carr 31	Cottrell 9
Albritton 22, 23, 24, 25, 26	Carter 31	Cox 33
Alden 25	Carthan 31	Crain 9
Alexander 48	Casey 31	Crawf— 33
Allen 20, 21, 22, 23, 31	Cash 30	Crawford 33
Anderson 20, 21, 22, 23	Cato 23, 24, 25, 26	Criner 17
Arnett 24	Chamberlin 26	Cullen 33, 34
Arnold 27, 28, 29	Chambers 31	Cunningham 48
Atkins 29	Chambliss 47	Curry 9, 34
Baskin 22, 23, 24	Champion 31	Dabner 34
Batte 22, 23, 24	Chandler 31	Dailey 34
Batts 48	Chapman 31	Daniels 34
Belcher 27	Chase 1, 10	Daugherty 34
Bellefontain 5	Chestang 31	Davage 34
Berry 47	Chew 31	Davenport 48
Bertha 48	Chism 31, 32	Davis 45, 48
Bevill 13	Chriss 32	Desaint 11
Beville 13	Christian 32	Davis 1, 20, 34
Birdwell 45	Clack 32	Day 34
Booker 48	Clark 32	de Hudon 5
Boston 48	Clay 1, 32	Deloch 34
Bounds 9	Clayton 32	Demos 34
Brazeal 9	Cleveland 32	Denver 3
Bouchard 10, 11	Clifton 32	Dickerson 34, 45
Boutwell 28	Close 32	Dickson 34
Bourjea 11	Coaksey 32	Dillard 34, 45
Boyer 10, 11	Coins 32	Dixon 34
Brantley 20, 21	Col 32	Dorsey 35
Brown 1, 2, 3, 4	Cole 32, 48	Dotson 35
Buchanan 3	Coleman 32, 48	Douglas 35
Burch 45	Collins 32, 33, 48	Dowden 35
Burchette 25	Colston 33	Downs 45
Burns 12, 14, 15	Colter 33	Doyle 35
Burton 14, 25	Colvin 45	Drawhorne 48
Butler 29, 48	Conley 33	Drawn 35
Byram 20, 21, 22, 23, 24, 25, 26	Cook 33	Drew 47
Cade 30	Cooke 25	Drumette 35
Cadott 5,	Cooks 33	Duck 14
Cadot 5,	Cooksey 33	Dudley 35
Cadran 6	Cool 33	Duford 10
Calhoun 1	Cooper 33, 48	Duhart 35
Canfield 31	Corbin 47	Dunbar 48
Carmouche 27, 28	Cornelius 33	Duncan 35
Carpenter 12, 31	Cosper 33	Dunn 35
	Cotton 33	Dupree 35

SURNAME INDEX

(A surname may appear more than once on a page.)

- Duquesnay 11
Durand 5
Duyck 14
Dyas 35
Dyke 12-15
Eads 10
Eades 10
Ealy 35
Earl 35
Earnest 35
Easley 35
Edson 26
Edward 48
Edwards 35, 36, 48
Eistner 36
Elleby 36
Ellis 36
Ellison 36
Elmore 36
Emden 6
Emerson 45
Emery 36
Enmon 36
Estus 36
Etchers 36
Etheridge 27
Ethrige 49
Evans 31, 36
Everett 26
Fairchild 16
Farnell 36
Ferguson 36
Fields 36, 49
Finnie 36
Fisher 36
Fitzgerald 10
Flemming 36
Flournoy 36
Flowers 36
Floyd 36
Flynn 31
Foppe 36
Ford 37, 49
Fortin 5
Fortson 15
Foster 3, 37, 49
Franklin 37
Frasure 37
Frazier 37
Freeman 37
French 37
Fresman 37
Frizzle 23, 24
Fryer 37
Fulcher 37
Fuller 37
Gaines 37
Galbraith 46
Gallagher 37
Gallier 37
Gamac 5
Gamache 5
Gans 49
Gant 37
Garland 37
Garner 37
Garrison 37
Garnsey 10
Gaskin 37
Gates 37
Gaus 37
Gautreaux 11
Gay 37
Gearen 9
Geary 3, 27, 28
George 38
Geren 9
Gibson 38, 49
Gideon 38
Gilbert 45
Giles 10
Gilford 38
Gilliam 38
Gilmer 27, 28, 29, 38, 39,
40, 41
Gilmore 38
Gill 22
Gilyard 38
Givens 38
Glass 20, 21, 22, 23, 24
Glenn 38
Glover 38
Gobiel 5
Good 14, 38
Goode 38
Goodson 38
Gordon 38
Gotham 10
Govoro 6
Govrogovoro 6
Goyme 19, 20, 21, 22, 23,
24, 25, 26,
Gracey 27
Graham 27
Gray 23
Green 13, 24
Grenier 6
Griffin 23, 24, 48, 49
Guerin 25
Guiet 5,
Haas 27
Hall 13, 31, 49
Halley 45
Harkness 20, 22
Harper 12, 13, 14, 47
Harris 12
Hart 9
Hartwell 49
Hatcher 25
Hawley 45
Haynes 24
Hayward 2
Heard 19, 20, 21, 22, 23,
24, 25, 26
Henry 49
Herron 27
Hesoun 7
Hickman 22, 23, 24, 25, 26
Hill 27
Hinds 24
Hobby 49
Holland 23
Holley 45
Hortman 9
Huan 5

SURNAME INDEX

(A surname may appear more than once on a page.)

Hudon 5	Mannings 31	Pyke 6
Hudonditbealieu 5	Mardis 13	Queen 12
Hutchinson 45	Marshall 14	Redmond 50
Hydel 11	Massey 20, 22, 23	Reeder 3
Irby 39	Marrox 49	Regan 47
Jackson 14, 20, 22, 49	Maxwell 13, 47	Reid 23, 24
Jacob 49	McArter 49	Rodgers 10
Jacobs 49	McAvoy 10, 11	Rogers 23
Jamerson 16	McCartney 9	Rose 47
James 39, 40, 41, 42	McCuller 47	Roundtree 24, 25
Jamison 16, 17, 18	McDade 49	Ruchek 7
Jefferson 39	McDonald 25	Rushing 27
Jennings 27, 28, 39	McGann 20, 22	Rye 14
Jimmerson 16	McHenry 50	Ryland 20, 21
Johnson 10, 20, 22	Meares 27	Seals 16
Jolly 10	Medary 3	Seward 1
Jones 25, 47	Meeks 46	Settle 13
Kea 14	Middleton 30	Shackelford 20, 21, 22, 23, 24
Keeth 41	Mitchum	Shannon 3
Keith 23, 24	Morgan 13, 14	Shaw 50
Kendall 10	Moore 12, 50	Shows 24
Kennedy 13	Mullins 14	Simmons 6
Knox 49	Murff 27	Smalley 46
Kossuth 2	Nations 23, 24, 25	Smart 50
Lamarre 5	Neal 16, 18	Smith 13, 23, 39, 40, 41, 42, 47
Lane 3	Nutt 20, 21, 22	Spivey 25
Langlier 5	Oden 45	Staten 29
Larose 6	Oglesby 27	Stephens 50
Lavie 5	Parmer 20, 22	Stephenson 27
Lawrence 11	Payne 22, 23, 24	Stinson 27
Layve 5	Peachy 29	Stott 26
Lazarus 5, 6, 7	Perkins 31, 45	Stovall 23, 24, 25
Lee 20, 21, 22, 23, 24, 25, 26, 40, 41	Perry 50	Stroder 22, 23
Leger 24	Peters 50	Stuart 24
Leonhardt 1, 2, 3	Petras 31	Suthard 20, 21, 23
Lewis 2, 3, 4, 14, 49	Pierce 3, 14	Tatum 26
Linxwiler 6	Pockrus 9	Taylor 20, 21, 22, 23
Logan 27, 28, 29, 30	Polivka 6, 7	Tidwell 28
Luda 7	Poole 30	Thayer 2
Lunday 25	Patillo 39	Trexier 45
Maddox 9	Potiler 39	Trudeau 8
Maddux 9	Prescott 29	Turner 20, 21, 41, 50
Madison 9	Prigg 1	Vance 27, 28, 30, 39, 40, 41, 42
Mallory 49	Proctor 13	Vanconant 10
	Pullen 23, 24, 25, 26	Vickers 27, 28, 29

SURNAME INDEX

(A surname may appear more than once on a page.)

Votlucka 6, 7
Ward 50
Warren 16,18
Watson 15
Weiland 1, 2, 45, 46
Weldon 20, 21, 22
Whitson 12, 15
Williams 31
Willis 47
Wills 43
Wimbish 29
Wimbush 29
Winters 50
Wilson 10, 14
Wodiker 6, 7
Wood 4, 22, 23, 24
Woods 9, 31
Woolridge 45
Wright 10, 20, 21, 22, 23
Wyche 27
Young 46
Zeigler 28, 29