

---

VOLUME 36

FOURTH QUARTER 2002

NUMBER 4

---

PUBLISHED QUARTERLY BY

**ARK-LA-TEX GENEALOGICAL ASSOCIATION, INC.**

P.O. BOX 4462  
SHREVEPORT, LOUISIANA 71134-0462

# THE GENIE

VOLUME 36

FORUTH QUARTER 2002

NUMBER 4

## Table of Contents

### Features

- 152 Notice of a Change of Address
- 153 The Lost and Confused  
by Dale Jennings
- 156 Welcome New Members
- 156 Submission to The Genie
- 157 Where Did They Go?  
by Herman L. Weiland
- 159 A Touch in Time: Hazard, Sheriff & Shreve Families  
by Herman L. Weiland
- 162 Suggested Web Sites to Visit  
by Herman L. Weiland
- 164 Exchange Periodical Review  
by Herman L. Weiland
- 165 Book Reviews  
by Herman L. Weiland
- 167 Ancestor Chart  
Compiled by Hazel Morgan
- 168 Springhill Baptist Church & The Community  
Compiled by Herman L. Weiland  
Information Provided by Hazel (Giddens) Morgan
- 176 From Log Cabin to Castle  
by Bob Sweet
- 178 Springhill Community Cemetery Listing, Bienville Parish, Louisiana  
by Herman L. Weiland
- 186 Star Cemetery, Caddo Parish Louisiana  
(Continued from The Genie, Vol.36, Third Quarter 2002)  
by Isabelle Woods
- 199 Louisiana Records: Direct Index to Conveyances of Caddo Parish, LA

**ARK-LA-TEX GENEALOGICAL ASSOCIATION, INC.**

Post Office Box 4463

Shreveport, Louisiana 71134-0463

The *Ark-La-Tex Genealogical Association, Inc.* is a non-profit, non-sectarian, non-political, educational organization dedicated solely to the cause of genealogy. This organization is governed by these purposes:

To collect, preserve, and make available genealogical materials, documents, and records; to encourage an interest in genealogy and to sponsor educational programs for its development; to promote and publicize the City of Shreveport, Louisiana, as a major genealogical research center for genealogists and historians; to cooperate with and assist all other genealogical, historical, and patriotic societies in the furtherance of these purposes; to compile and publish a quarterly composed of records and data related to the science of genealogy.

The *Ark-La-Tex Genealogical Association, Inc.* meets on the second Saturday of each month from 1:00 p.m. to 3:00 p.m. at the Randle T. Moore Senior Citizen Center, 3101 Fairfield Avenue, Shreveport, LA.

Dues for membership from January 1 through December 31 of each year in the *Ark-La-Tex Genealogical Association, Inc.* are \$12.50 for an Individual Membership and \$15.00 for Married Couples.

All members receive four issues of The GENIE, which is published quarterly.

The *Ark-La-Tex Genealogical Association, Inc.* will publicize a book of genealogical interest in The GENIE when submitted by the publisher or an author. These books are then donated to the Genealogy Department of the Broadmoor Branch Library, 1212 Captain Shreve Drive, Shreveport, Louisiana 71105, where they are made available to the public. The Ark-La-Tex Genealogical Association, Inc. periodically donates other genealogical material to this library.

The *Ark-La-Tex Genealogical Association, Inc.* welcomes queries, which are published free in The GENIE. A query must be no more than seventy (70) words, either typewritten or legibly handwritten.

## BOARD OF DIRECTORS (2002)

President .....	Marguerite J. Loftin	(318) 746-4598
First Vice President .....	Willie Ray Griffin	(318) 631-6031
Second Vice President .....	Victor C. Rose	(318) 687-3673
Recording Secretary .....	Constance Whatley	(318) 861-4336
Corresponding Secretary .....	Victor C. Rose	(318) 687-3673
Treasurer .....	Herman L. Weiland	
Trustee (2003) .....	Cynthia D. Millen	(318) 929-2983
Trustee (2003) .....		
Trustee (2002) .....	Betty Jon Gorman	(318) 868-2807
Trustee (2002) .....	Sharron McAvoy	(318) 868-4723
Past President .....	Reed C. Mathews	(318) 797-6550

## PUBLICATION (THE GENIE)

Editor (Acting) .....	Willie R. Griffin	
Typing & Computer Editing .....	Roy L. Henderson	
Book Reviews .....	Herman Weiland	
Queries, Typing & Indexing .....	Isabelle Woods	
Printing .....	Victor C. Rose	
Labels .....	Michael Broussard	
Bulk Mailing .....	Carl & Pat Hallgren	
Collating .....	Constance Whatley, Lillian Hope Veretta & Herman Weiland, Lillian Nash, Betty McCabe and Joan & Harry Lazarus	

## ALTGA COMMITTEES

Hospitality .....	Thelma Sabbath	(318) 635-3637
Publicity .....	Betty Jon Gorman	(318) 868-2807
Telephone .....	Betty Kintzing	(318) 221-2988
Finance .....	Reed C. Mathews	(318) 797-6550
Programs .....	Marguerite Loftin	(318) 746-4598
Historian .....	Betty Jon Gorman	(318) 868-2807
Resale .....	Ruth Mann	
Exchange .....	Herman Weiland	(318) 746-5811
Education .....	Victor C. Rose	(318) 687-3673
Web Page .....	Reed C. Mathews	(318) 797-6550
Seminar .....	Victor C. Rose	(318) 687-3673

## Statement of Publication

*The Genie* is published quarterly with issues in February, May, August and November. Each member receives four issues for each year of membership. All material published in *The Genie* is compiled and contributed by the members. Members and nonmembers of the Ark-La-Tex Genealogy Association may contribute material for publication in *The Genie* (bible records, cemetery listings, diaries, wills, etc.). Such contributions are appreciated and encouraged. Send material for publication to *The Genie* at the Association's mailing address. Material will be used at the discretion of the Editorial Review Board as space permits. We reserve the right to edit and/or condense material as needed. Submission deadlines are the last week before the first day of the month of quarterly publication.

The Association exchanges periodicals with other genealogical and historical organizations publishing data of general interest. We regret that we cannot exchange with limited family organizations. However, send samples of your publications for review. Since many publications possess information of value concerning families contain therein.

When Cemetery Records are submitted, include the name of the contributor, the copier, date copied and cemetery locations (such as road name or number, community, etc.) and also the Section, Township, and Range, if known. When Bible Records are submitted, give date and publisher of the Bible (if known), date copied, name of the contributor, name of present owner and the original owner.

Queries are free and encouraged. Please submit them typed or very plainly written. Space is limited. Please be brief and concise, using no more than 70 words per query. The editor reserves the right to edit or reject queries not suitable for publication.

The *Genie* cannot be responsible for errors or inaccuracies, but will hasten to publish corrections. Please read the material carefully and advise the Association in writing of corrections.

This publication is indexed in the Periodical Source Index published by the Allen County Public Library Foundation, Ft. Wayne, IN.

### Copyright Laws

All who submit material from any source should be aware of copyright restrictions. When applicable, permission to use published material must be in writing and should be included when manuscript is submitted. Source and date of information used should be indicated.

From The President's Desk  
Marguerite Loftin, (318) 746-4598

Greetings:

This is an election year for the *Ark-La-Tex Genealogical Association*. We will not have any "hanging chads" because we vote by written ballot. This will be my last letter to you as your president. At our annual meeting, Christmas Party, on December 14, 2002 we are electing a new Board of Officers and several Trustees. Therefore we hope that you will put this date on your calendar and help us decide the direction to take in 2003.

In September we had to change our announced program and yours truly, Marguerite Loftin, spoke on the history of Captain Henry Miller Shreve. He was an inventor and river boat pilot who removed the log jam on the Red River from Natchitoches to Caddo Indian Territory where he helped establish Shreve Town. For our October program, Nita Cole, Archivist and Curator for the Bossier Parish History Center spoke on the genealogy of several Jewish families who were instrumental in founding the business community of early Shreveport. "All the Treasure you can find in an Old Trunk" was the topic presented by author Sarah Pierce for our November program.

We feel the internet is changing the manner in which information is found, viewed and interpreted. The board passed a recommendation at the October meeting to change the format of our August seminar. At this time we are open to all suggestions, "Think out of the box". Help us decide what the membership would consider as a new approach. We felt the new board should make the final decision. At the December 9 meeting bring us some ideal, suggestions, location and type of food! We welcome your input.

Come to the Randle T. Moore on December 14, 2002, at 12:30 p.m. **Bring your favorite Xmas finger food to share.** Come to celebrate, fellowship network and vote.

  
Marguerite J. Loftin  
President

Important Notice!

Important Notice!

Change of Address

The Ark-La-Tex Genealogical Association has moved.

Next door to a larger post office box.

Please direct all correspondence for the ALTGA

To Post Office Box 4463, Shreveport, LA 71134-0463

Exchange members...please note this change of address

For the periodicals you mail us.



## LOST AND CONFUSED

(Much like being “lost and confused” now in genealogical matters, so it was with other pursuits in these reminiscences about my earlier years in South Texas. – Dale Jennings)

The “long hunter” Daniel Boone is supposed to have claimed that he was never lost, but was once mightily confused for a couple of days. I have been both lost and confused, but only confused on this occasion. I was with my sister Beverly’s boyfriend, Bill Meider. We were hunting, *uninvited*, along the Nueces River on the big Albert West Ranch. This was near my little hometown of George West in South Texas. Mr. George West had long been laid to rest, and his huge ranch divided. This tract of his vast domain now belonged to a son who had a big house on the hill above town.

Bill and I heard a yipping sound up on the high bank. Peering over the bank, we saw a pickup moving along slowly, with a small dog riding on the cargo box. We kept out of sight, and eased off down the river. Presently, we saw a small animal moving about on the low bank at some distance ahead of us. Bill, being an excellent shot, raised his .22 rifle and shot this creature. He inquired of me if this wasn’t a raccoon. I said that I thought it was; but, intended as a joke, added, “unless it might have been that man’s little black and white dog.” Having said this, the possibility struck me. Eye contact triggered a sprint down along the river bank, Bill in the lead. He reached and grabbed the subject, a young coon, by a hind leg and we turned for the river. The river was low at this time of year. We splashed through the not much more than ankle deep water, up the other side, and straight ahead. Still at a run, we topped a crest, and were stopped in our tracks by a panoramic view of – the river!! I was overcome by a lightheadedness bordering on vertigo. We must have looked like Butch and Sundance holding a raccoon. Bill figured it out first. He convinced me that I hadn’t lost consciousness or touch with reality. This was the narrow neck of a meander, common to the rivers and bayous in Louisiana, but not here in Live Oak County, Texas. We may have found the only such switchback bend on the Nueces. It took only a little calm logic to determine where we were, and where we wanted to be.

Later, Bill with some partners bought a relatively small thousand-acre tract of the ranch from the Albert West heirs when they settled the estate. This was a business venture, but he retained his own fifteen acres in a back corner for a place to hunt. A deer blind strategically placed in the fence corner provided excellent observation of deer crossing both fence lines. A good thing can always be improved upon. Bill installed a deer feeder with a timer that scattered corn while audibly announcing the dinner hour. To protect their deer from this dangerous corner, the West Ranch people fenced out the fifteen-acre corner with a high deer fence. A good case for, “If it ain’t broke, don’t fix it.”

As kids we often camped on a nearby creek or the Nueces River. My brother Paul and I with two or three friends planned a camp-out and night hunt along the river. We made camp, cooked and ate supper and waited for darkness. Then with .22 rifles, flashlights and carbide head lamps, our party went out into the night to spotlight coons and possums. We wondered randomly through the broad river bottom, shining our lights up into the giant live oaks. Of the few eyes we shined, their owners had the wisdom not to stop and stare. It was decided to work our way back toward camp. After seeing the same tree for the third time, it became apparent that the expedition was going in circles. Good sense finally prevailed upon us to stop and hold council. Not knowing the mysteries of the night skies, we entertained other suggestions for getting our



directions. These included listening for the train, the sounds of the river, or better yet, someone driving over the wood planked old river bridge. It was past midnight and all was quiet. We listened. Standing there, my eyes were drawn to something over there on the ground. It was the embers of our fire, a long spitting distance from where we stood. We walked over and went to bed.

Lost is becoming disoriented in an unfamiliar expanse of brush land as it's beginning to turn dark. Add to that the realization that those who care about you will soon be hoping you are only lost, and not shot, snake bitten, or some other terrible thing. We sometimes "called" coyotes back home, using reed varmint calls made by inserting a small piece of cactus skin into a split mesquite stick. When blown upon, it was supposed to sound like a rabbit in distress. It seldom worked, but we were always optimistic. Bill, Beverly, Patty Hendricks and I went coyote hunting one afternoon near the farm and ranch community of Clegg. Patty lived at Clegg, which in its more robust days had a store with gas pump, Baptist church and country schoolhouse. Patty was our age, but her father was considerably older than ours, having been gassed in the First World War.

Bill Meider drove his cherished old Chevrolet car out a remote dirt road, and parked far from any human habitation. We climbed through the barbed wire fence into a brushy ranch pasture and made ourselves a couple of coyote calls. We then wandered at random from one ambush site to another, trying to perfect our dying rabbit ploy. With no success and the hour growing late, it was time to start back to the car. We were unable to reach a consensus about our directions, so made our best guess and set out. Hopes of finding our way fell with the descent of the sun behind the horizon. We were lost. But, what about that bright star near the dim skyline? Could it be the North Star? We studied it. It wasn't a star at all, but a light. We arrived at what turned out to be the Martinez ranch just as it was becoming too dark to avoid the prickly pear and other thorny obstructions. Mr. Martinez listened to our dilemma, and agreed to take us back to our car if we could wait until he finished an essential chore. Absolutely! We were soon on our way to the car, and then back to Patty Hendricks' house. Her parents had started to be concerned about us. Patty's old Uncle Pink Hendricks was also concerned, but to him it was a moral issue. He believed that young ladies out after dark in mixed company and not chaperoned was a scandal and disgrace to the family name. Bill married Beverly, but Patty and I did not marry.

Bill Meider's dad came back to South Texas to stay in the mid-1950's. Bill Senior had retired after a long career as a "tool pusher," or rig foreman, in the oil fields of Mexico and Central and South America. He found a 1,000-acre ranch for sale in the Central Texas "hill country," which he bought for \$33.00 an acre. The rough, hilly Edwards Plateau region is said not to contain any bona fide mountains. I take exception to that in describing Mr. Meider's ranch as one large mountain, with only a small valley floor. The little valley was widest at the entrance gate, and narrowed like a slice of pie until it disappeared, at its tip, up the mountainside. Near that point sat a nice little hunting cabin, which until then had been residence to the ranch's sheep and goat herder. The previous owner took out his sheep and goats, except for a few of the wilder ones, that were now subject to become barbeque at the discretion of their new owner.

With the domestic stock removed, the ranch became even more supportive of its wildlife. It had an abundance of deer and wild turkey, and even a herd of javalinas. They had apparently found their way here from their typical cactus and mesquite flat land habitat. The ranch's terrain was rocky, having steep mountainsides, but flat on top, with side canyons, benches and saddles.

All but the valley floor and scattered clearings was covered with cedar, small oaks and other vegetation. Once on top, one could circumvent the valley, from above the gate all the way around the mountain to the other side of the gate, without coming down.

On the afternoon of my misadventure, I drew the corner behind the cabin as my designated hunting area. A mountain lion had once been seen up there. It was a long, almost vertical climb up the mountainside, made easier by holding to the fence. This was the property's only cross fencing. It fenced in the valley from the gate to the cabin, and then up to the top, finally tying back into the property fence.

Up on top, I first tried a tree blind, without success, and then hunted on foot, sitting for periods watching a clearing or a canyon. As evening approached, I was seeing deer, but none that I could identify as legal. My plan was to hunt until almost dark, and then descend the mountain, knowing that any down slope would lead to the valley. Upon reaching the bottom, I came up against a barbed wire fence, where no fence should have been. It was immediately clear that I had somehow gone down off the wrong side of the mountain. Going back over the mountain in the dark was not an option. The only safe and sensible course was to follow the fence up to the corner, then down that fence to the cross fence, and back down the way I came up. I literally could not see my hand in front of my face. It was, as we would say, "darker than the inside of a cow." I set out, carefully, knowing that this would take some time; holding to the fence as to a mother's hand. The fence took me back up on top. Sometimes my feet would slip on the gravel, and I would be hanging to the fence by a barb in the fleshy part of my hand. But I was making progress. Then, I saw over to my left a light shining up into the sky. I guessed correctly that this was Dad, Paul and Bill looking up into my deer blind. Good! This would save me a lot of time and spare me having to descend the mountain in the dark. Without the consideration that might have been given, I raised my rifle barrel into the air and fired. I was really surprised at how much noise a 30.-30. deer rifle can make on a dark, still night. That was answered by what sounded like every sheep, goat and deer in the countryside clattering up and down the hills and canyons. The search party came over with the light, and I was soon back in the valley enjoying a hot meal.

I never had the misfortune to be lost overnight. It happened to Bill Meider one time – sort of. He had the permission of Mr. Rocky Reagan to hunt on the 20,000-acre Ray Ranch on the Nueces River. He didn't find the gate key that was customarily hidden at the gate, so went in on foot. Beverly became worried when Bill was much overdue in returning, and called Dad. He went out to search the ranch with a flashlight. I was not living at home at the time. He failed to find his son-in-law and finally had to give up and return home. At one point he did briefly find Bill's tracks. Dad said he was surprised to see how far the footprints were apart, as he had never known Bill to be in a hurry. Bill eventually came to a house, which really confused him. Not wanting to startle anyone at that late hour, he slept on the trunk of a car parked in the carport. Next morning he inquired at the house, and was told by the lady resident that the gate and his car were "right over there." I don't hunt anymore myself, except occasionally in some of those big parking lots. I have not gotten lost, but have been, like that other "long hunter," mighty confused.

## Welcome New Members

**McLaughlin, Dorothy**, 265 Hunters Glen Lane, Kimberling City, MO 65686  
Phone: (417) 739-1442  
Researching: McLaughlin and Hardin

**Strickland, Evelyn Louise Krumm**, 2808 W. Gay Avenue, Gladewater, TX 75647  
Phone: (903) 845-7070 E-mail: [esnsqmpr@aol.com](mailto:esnsqmpr@aol.com)  
Researching: Krumm, Strickland, Gray and Spikes

**Sheeley, Patsy R. Rawlins**, 1515 Anita Street, Bossier City, LA 71112-3107  
Phone: (318) 742-8339 E-mail: <5birdsrus@cox-internet.com>  
Researching: Rawlins, Vondieson, Foundice, Andrus and Sloane

OOPS! A Correction...

*Sorry Mrs. Helene L. Pockrus (of Highland, UT) for identifying you as (AA) African American, we know better. We are sorry for the mistake.*

### **Submission to The Genie**

“Material for the Genie is always appreciated”

The Publication Staff of *The Genie* is always looking for articles about genealogy. We are especially interested in articles concerning the Ark-La-Tex area. Since our publication is mailed to other genealogical organizations we need to keep our articles mainly about this area, however, we do occasionally accept articles on other areas. Hard copies only, no computer discs will be accepted. When submitting an article that you did not write, please be sure that you either furnish written proof from the author that we can reproduce it or information on how to contact the author. *We must have permission to print all articles.*

Deadline for publication is the 15<sup>th</sup> of the first month of each quarter. Original articles can be mailed to the editor: **Willie Griffin, P. O. Box 4463, Shreveport, LA 71134-0463**

Or send e-mail to: [wraygriffin@netzero.net](mailto:wraygriffin@netzero.net) *Please include your name and phone number.*

#### **Suggested Topics:**

*Calendar events, local research and resources, genealogical hints, tidbits and trivia, family research, national and international research, on-line research and web sites that you have found helpful.*

## WHERE DID THEY GO?

By Herman Weiland

Those early Ark-La-Tex area residents moved on, where did they go? Perhaps you have a County history book, from other States, which has families in it that came from the Ark-La-Tex area. Please submit a brief synopsis of the family history as it appears in the book, give the title of the book, compiler and year published. We will publish these as space permits. Include you name and address so that if someone desires the entire article they may request it from you. If you are requesting a copy of a complete article be sure to enclose an SASE with a small stipend for copy costs. Submitted by Herman Weiland, 2511 N. Waverly, Bossier City, LA 71111-5933.

**The following was found in the book "Union County and Its People" compiled by the Union County New Mexico Historical Society in 1980.**

### **CHARLES BAIRD FAMILY - Page 72**

Charles Daniel Baird and his wife, Macon Pollard Baird, and three small children left Wise County, Texas, in 1900 to begin a new life. They arrived in Dalhart, Texas in 1901. In 1906 they filed for a homestead just across the New Mexico line in Union County. Charles Baird died in 1938 and Macon Baird died in 1962. (Charles Baird was born 20 Jun 1860 in **Desoto Parish, Louisiana**, to John T. and Margaret (Brown) Baird who married on 9 Nov 1854 in **Natchitoches Parish, Louisiana**)

### **CHARLES BERLY FAMILY - Page 78**

Born in **Mansfield, Louisiana**, Charles "Bill" grew up there and in Gillham, Arkansas. His late father was Wesley Berly, career forest ranger. His mother Fern still lives in Gillham. Bill married Juanita Head. They arrived in Clayton New Mexico in October 1976.

### **MAYWOOD (MISSIE) BURROWS STORY - Page 89**

Missie was born November 21, 1913, in **Neame, Vernon Parish, Louisiana**, the daughter of William Spencer Sharp, MD, and Mary Harwood Harris Sharp.

She married (1) Elmer L. Duffield in June 1934 and divorced in 1937; (2) Jerome W. Hendren in 1944 who died in 1953; (3) Glenn Milton Burrow, February 8, 1954, in Belen, New Mexico.

Glenn and Missie moved to a ranch 13 miles southeast of Clayton, New Mexico in 1960. Since 1953 Missie has been compiling her family history.

### WILLIAM C. CONWAY STORY - Page 100

I was born November 8, 1915 in rural **Hopkins County, Texas**, the fifth child of a family of six... My father, William C. Conway, was born in East Texas in 1875 and went to New Mexico as a young man, he came back to East Texas in 1912. I went to Union County, New Mexico in 1931 graduating high school there at Clayton in 1934. I married Edna Varney, a native on Corona, Lincoln County, New Mexico.

### McCOOK FAMILY HISTORY - Page 166

William Hess McCook was born in Georgia, November 20, 1869. He came to Texas when he was sixteen and farmed near **Carthage, Texas** until the late 1880's. His first wife Willie died in 1906. He then married Susie Beckner on March 1, 1908, near Haskell, Texas. Susie's father George Beckner had come to the Otto Community in Union County in 1906 and William and Susie followed on January 1, 1911. With them were thirteen children, as well as all the family belongings, animals, and implements necessary for homesteading. He received his Patent in 1916. He and Susie's siblings also came to Union County and in the 1920's there were over one hundred Beckners and McCooks in the area. William Hess McCook died April 22, 1955 and Susie, February 8, 1947.

### J. L. McDADE STORY - Page 168

J. L. McDade, and wife came from Dumas, Texas and were followed by their parents Noel and Sue McDade in 1945. Noel McDade served as Mayor of Clayton for eight years. (Noel McDade's grandparents, Col. Alexander Jackson McDade and Mary Ann Miller were of the **Fillmore Community, Bossier Parish, Louisiana**, having come from Alabama in 1848).

### PARHAM FAMILY -Page 192

The Parham family were early colonists in Virginia, and some had migrated to Mississippi via Georgia. Greeley Concklin Parham was born in Mississippi in 1888, was reared near **Paris, Texas** by his mother and step father. His father William Nathaniel (Bill) Parham had arrived in Clayton, New Mexico about 1894. Greeley later joined his father and helped in the various family businesses. In 1908 he married Frances Margurette Boggs. Greeley died in 1954 and Margurette in 1970.



**A Touch in Time**  
**Hazard--Sheriff/Shreve Families**  
 By Herman L. Weiland

I think it is great when you find an interesting family relationship during your searching, these just seem to add something to your family history and make it more exciting. I recently discovered a very brief **Touch in Time** between my 9th Great Grandfather, **Thomas Hazard** and **Martha Sheriff**, the 2nd Great Grandmother of **Captain Henry Miller Shreve**, for whom the City of Shreveport, Louisiana was named.

Taken from the Herman Lewis Weiland Ahnentafel published in **The GENIE**, 1996, Volume 30, Issue No. 2, pages 53-60, and Issue No. 3, page 124.

**No./Direct Line Ancestor/Spouse**

- 1. Herman L. Weiland
- 3. Mary L. Leonhardt
  - 2. Fred Weiland
- 6. Henry Leonhardt
  - 7. Olive E. Rudy
- 13. Esther Lewis
  - 12. Charles Leonhardt
- 27. Anna Wood
  - 26. Griffith Lewis
- 55. Phebe Benedict
  - 54. Daniel Wood
- 111. Anna Stephens
  - 110. Reuben Benedict
- 222. Peter Stephens
  - 223. Ann Jackson
- 445. Mercy Cottrell
  - 444. Peter Stephens
- 891. Bethia Wilcox
  - 890. Gershom Cottrell
- 1783. Hannah Hazard
  - 1782. Stephen Wilcox
- 3566. **Thomas Hazard** (c1610-1680)
- 3567. Martha \_\_\_\_ (1610-1669)



- Henry Miller Shreve
- Israel Shreve
  - Mary Cokely
- Benjamin Shreve
  - Rebecca French
- Caleb Sheriff / Shreve
  - Sarah Areson
- Thomas Sheriff** (c1610-1675)
- Martha** \_\_\_\_\_ ( -1691)

**Thomas Hazard** married **Martha Sheriff**, the widow of **Thomas Sheriff**, in 1675. There is no blood relationship between the two families of Hazard and Sheriff and any step relationship ended with the death of **Thomas Hazard** in 1680. This **Touch in Time** lasted only five years in marriage, although the couple were well acquainted previous to that time.

There are many books written about Capt Henry Miller Shreve and the voyages of ships that he had designed or that he Captained. I will not attempt to restate those facts but will give you some insight into his family background.

### Sheriff/Shreve Family

**Thomas Sheriff** was recorded first as being in Plymouth, Massachusetts and then in Portsmouth, Rhode Island by 1641 as on Dec 7th of that year he is one of the complainants against a James Laxford for trespass. He married **Martha** \_\_\_\_\_ c1648 as their first child was born on September 2, 1649. Thomas died on May 29, 1675 with his inventory taken June 11, 1675. Shortly thereafter **Thomas Hazard** made a statement that there was a "promise of marriage betwixt Thomas Hazard and Martha Sheriff", but he disclaims any interest in or control over her estate. Evidently there was some opposition to this marriage from Thomas Hazard's children as his will signed the thirteenth day of November, 1676 gives to his three children Robert Hazard, Hannah Wilcox and Martha Potter "one shilling, to be paid in silver coigne, one month after my death". His wife Martha was bequeathed all his real and personal property. **Thomas and Martha Sheriff** had eight children: (1) Thomas (2) John (3) **CALEB** (4) Mary (5) Susannah (6) Daniel (7) Elizabeth (8) Sarah.

**Caleb Sheriff/Shreve** was born c1653 in Rhode Island and died c1741 in Burlington Co., New Jersey. He married a Dutch girl **Sarah Areson/Aaronson**, dau of Deidrich Areson/Aaronson and Sarah Orrest on Long Island c1680. **Caleb and Sarah Shreve** had ten children all born in Burlington Co, New Jersey: (1) Martha (2) Thomas (3) Joseph (4) Joshua (5) Caleb (6) Mary (7) Sarah (8) Jonathan (9) David (10) **BENJAMIN**.

**Benjamin Shreve** was born June 9, 1706 and died 1751 in Burlington Co., New Jersey. He married **Rebecca French**, the daughter of Richard French and Mary King, on February 23, 1729. **Benjamin and Rebecca Shreve** had eight children all born in Burlington Co., New Jersey: (1) Kazia (2) Richard (3) Caleb (4) William (5) **ISRAEL** (6) Sarah (7) Benjamin (8) Samuel.

**Israel Shreve** was born on December 24, 1739 and died December 14, 1799 in Fayette County, Pennsylvania. He married first **Grace Curtis**, daughter of John Curtis and Elizabeth Pancoast, about 1761. Israel and Grace Shreve had four children: (1) John (2) Elizabeth (3) Sarah (4) Kazia. **Israel** married second, **Mary Cokely**, daughter of Cornelius and Johanna Cokely, on September 16, 1773 at Christ Church, Philadelphia, Pennsylvania. **Israel and Mary Shreve** had eight children: (1) Esther (2) Israel Jr. (3) George Green. (4) Rebecca (5) **HENRY MILLER** (6) Benjamin (7) Mary (8) Caleb.

**Henry Miller Shreve** was born October 21, 1785 in Rancocas Creek, New Jersey and died 1851, he was buried in Bellefontain Cemetery in Saint Louis, Missouri. He married first **Mary Blair** and second **Lydia Rogers**.

The Sheriff Family was in Plymouth, Massachusetts and then Portsmouth, Rhode Island. Most of the Sheriff children moved to Burlington County, New Jersey starting about 1680.

Caleb Sheriff changed his family name to Shreve after moving to New Jersey. He was one of the earliest settlers in western New Jersey. He built a brick home c1688 on land he obtained from John Fenwick. The Shreve family was living in New Jersey for another 100 years and then Israel Shreve moved to Westmoreland Co., Pennsylvania in 1788 in the company of 30 individuals and on to Fayette Co., Pennsylvania by 1789. He leased land from Gen. George Washington on April 1, 1790 for a five year period. He then purchased from Gen. Washington some Fayette County land, 1,644 acres for 4,000 pounds on July 31, 1795.

Israel Shreve had joined the Continental Army of George Washington in 1775 and on October 21, 1775 was promoted to Lieutenant Colonel in the 2nd Regiment of New Jersey Troops. He was promoted to Colonel on November 28, 1776. He took part and the battles on Brandywine, Germantown, Monmouth and was at Valley Forge for that horrible winter. It has been reported that Gen. Washington chose not to promote him to General in December 1780 because he was "obese" and he retired on January 1, 1781.

Henry Miller Shreve was born in New Jersey shortly before Israel Shreve moved the family to Pennsylvania. He was well educated as a Civil Engineer and took an interest in steamboats. He was the first to sail from Pittsburgh to New Orleans and return on the ship "Enterprise" in 1814. He was tasked with clearing the Red River by removing a log jam known as "The Great Raft" near where Shreveport, Louisiana is now and in 1837 the city was officially named for him.

*References:*

- Austin, John Osborne. {1887} 1982. Genealogical Dictionary of Rhode Island, GPC
- Coates, Truman. 1906. A Genealogy of Moses and Susanna Coates. privately printed.
- Crumrine, Boyd. 1882. History of Washington County, Pennsylvania. L. H. Everts & Co.
- Dorsey, Florence L. 1941. Master of the Mississippi. Boston, Houghton Mifflin  
[1941] 1999. Master of the Mississippi. Pelican Publishing Co.
- Ellis, Franklin. 1882. History of Fayette County, Pennsylvania. L. H. Everts & Co.
- Hazard, Thomas R. 1879. Recollections of Olden Times, John P. Sanborn.
- McCall, Edith S. 1984. Conquering the Rivers. Louisiana State University
- Northrup, Mary R. Ed., 2002. The Lively Experiment, Vol 4, Number 3, Order of First Families of Rhode Island and Providence Plantations.
- Pope, Charles H. 1900. Pioneers of Massachusetts. Boston
- WWW. Numerous sites, use search keyword Shreve or Henry Shreve



## SUGGESTED WEB SITES TO VISIT

Compiled by Herman Weiland

Commercial magazines sometimes print queries of a Genealogical Nature in a special section of that magazine. Some have even established an on-line version of that section to let those queries be seen sooner than waiting on the magazine publishing date sometime in the future.

[www.GoodOldDaysMagazine.com](http://www.GoodOldDaysMagazine.com) is one of these, after arriving at the listed address, click on "Wanted", follow instructions to view posted entries or post an entry of your own.

[www.YankeeMagazine.com/genies/index.php](http://www.YankeeMagazine.com/genies/index.php) is another, select from the pulldown search menu "Genealogical Searches" and follow the instructions. Try different keywords as the search engine sometimes does not recognise a word even though it is obviously in the query. I searched for Franklin and got three queries with Franklin as a location in them however it did not recognise the family names listed in the query. You can also post a query of your own by establishing a sign on procedure. Yankee Magazine has been published since 1935 and deals primarily with New England States, if you have family from New England the magazine content will certainly help you to place your ancestors in some perspective as to the living conditions of that time.

\*\*\*\*\*

I know there are lists everywhere of **Genealogical Terms and Definitions**. This site has words and phrases of a genealogical nature including occupations, place-name abbreviations, medical terms, words and phrases of Latin and several European languages. There is a special section to identify French Occupations, these occupation names taken from Canadian Census Statistical Summaries, the English occupation equivalent is given. If you have been stopped by a unfamiliar word from knowing more about your ancestor then this site may be for you.

<http://www.members.shaw.ca/hughlarmstrong/genlist.htm>

\*\*\*\*\*

### The Lewis & Clark Corps Of Discovery Descendant Project

To honor the permanent members of the Lewis & Clark Corps of Discovery that completed the trip to the Pacific Ocean, the Clatsop County Genealogical Society, Astoria, Oregon, is offering a **Corps of Discovery Descendant Certificate** to any person that can document they are a descendant to any permanent member of the 1804 - 1806 expedition.

We have expanded our project to include the Collateral Descendants of any member of The Corps of Discovery. All Direct and Collateral inquiries for forms and filing of documents for these projects are to be mailed to our current project address. Any questions concerning any aspect of the project are to directed to [shargrov@pacifier.com](mailto:shargrov@pacifier.com) Check this website if you have ancestors that participated in the Lewis and Clark Expedition, there is lots of information plus lists of the expedition members and much more. Historically a great site also.

<http://home.pacifier.com/~karen/lewis&.htm>

\*\*\*\*\*

I don't usually push commercial businesses but this site for the **Pelican Publishing Company** has so many books about Louisiana that it would be worth your time to explore. One book now available is the **2002-2003 edition of the Louisiana Almanac**. Every genealogist should have one edition of an Almanac, no need to purchase every year, in his or her library. There is population, geographical, and commercial statistics, lists of travel contacts, addresses of museums, travel bureaus and historic sites, latitude and longitude for nearly every town in the state, capsule histories of all parishes and many towns, lists of governors and high state officials. Price of this Almanac is \$26.00, you can order on the website or toll free 1.800.843.1724.

[www.pelicanpub.com](http://www.pelicanpub.com)

\*\*\*\*\*

### **Genealogy for Everyone / Généalogie pour tous**

If you have **French Canadian** ancestry you may find help at this site, actually two sites one in French, one in English. Several hundred common surnames, more than 2.5 million names, mostly French, France and Canadian place names, links to other sites.

<http://epf.planete.qc.ca/indexa.asp>

\*\*\*\*\*

### **Lost Americans**

If you are of **African American** or **Native American** descent, you have probably found that there isn't much of a paper trail after the last few generations. This site brings together a growing collection of hard-to-locate records, including slave lists from probate records and censuses, black cemeteries, prisoner lists and military rosters. It's a long shot but you just might find what you need at <http://lostamericans.netfirms.com/> If you are Native American, the **Texas Band of Choctaw Indians** has this site with Cherokee and Choctaw genealogy, treaty texts, photographs and links to other sites. This site was established for the Mount Tabor Community in east Texas. [www.chahta.org/](http://www.chahta.org/)

\*\*\*\*\*

### **United States Military Academy - Maps**

In 1938 the predecessors of what is today The Department of History at the United States Military Academy began developing a series of campaign atlases to aid in teaching cadets a course entitled, "History of the Military Art." Since then, the Department has produced six atlases and nearly one thousand maps, encompassing not only America's wars but global conflicts as well. In keeping abreast with today's technology, the Department of History is providing these maps on the World Wide Web. Go to <http://www.dean.usma.edu/history/dhistorymaps/MapsHome.htm> then click on **Atlases**, select the War and timeframe or location from that menu. War history buffs will love this site.

\*\*\*\*\*

### **Wisconsin Historical Society**

If you are seeking any information in Wisconsin then this is the place to start. [www.wisconsinhistory.org](http://www.wisconsinhistory.org) then click on **INDEX** to see some of the information they have available, or go directly to these pages by changing the URL.

[www.wisconsinhistory.org/roster/](http://www.wisconsinhistory.org/roster/) Wisconsin Volunteers 1861-1865

[www.wisconsinhistory.org/genealogy/ogrs/](http://www.wisconsinhistory.org/genealogy/ogrs/) Wisconsin Civil War Svc Records

[www.wisconsinhistory.org/wlhba/](http://www.wisconsinhistory.org/wlhba/) Wisconsin Local Hist & Biography

[www.wisconsinhistory.org/whi/](http://www.wisconsinhistory.org/whi/) Wisconsin Historical Images

\*\*\*\*\*

## EXCHANGE PERIODICAL REVIEW

Compiled by Herman Weiland

Many of the periodicals we receive, in exchange for "The Genie", provide up-to-date ideas on how to solve your research challenges. Always search the periodical published in your geographical interest area, but don't overlook other periodicals that may include articles of general interest to the researcher or about families that have migrated. These periodicals are located at the Broadmoor Branch Library, Shreveport, in the Genealogy Section.

**"Our Heritage, Vol 23.3, August, 2002"** published by the Van Zandt County Genealogical Society, Canton, Texas has on page 87 an interesting story of the establishment of **Fort Sill, Oklahoma** by Cheryl C. Vaughn. Fort Sill has a lot to offer in the way of Southern Plains Indian history and artifacts. **Geronimo's** grave and the gaurdhouse where he was kept are popular tourist attractions today. Page 97 has an article by Karen Mills on the **William Piles and Related Families** who were from Lincoln County, North Carolina and came to Van Zandt County, Texas by way of **Sumner County, Tennessee** and **Jackson County, Illinois**. If you have Piles in your family tree from those locations check this article out.

**"The Hoosier Genealogist, Vol 42.2, Summer, 2002"** published by the Indiana Historical Society, Indianapolis, Indiana has on page 70 an informative article by Carolyn M. Brady. If you spend much time in antique malls or flea markets you've seen those boxes of anonymous photos, someone else's ancestors for sale. If you don't take proper action now inside those boxes in the markets of the future may be your own photos. Ms. Brady's article on **"Labeling, Preserving, and Sharing Family Photographs"** should help put some organization into your picture archives. This article is a must for all genealogists with "pictures in a box".

**"Northeast Alabama Settlers, Vol 41.2, October 2002"** published by the Northeast Alabama Genealogical Society, Gadsden, Alabama has on pages 5-10 the **Cherokee County, AL Marriage Records 1867-1880** and on pages 22-26 Part 1 of the **Muster Roll of the 19th Alabama Infantry Regiment, Ables to Couch** in this Issue.

**"The Louisiana Genealogical Register, Vol XLIX.3, September 2002"** published by the Louisiana Genealogical & Historical Society, Baton Rouge, Louisiana has on pages 293-295 a listing of the **Koran Cemetery, Bossier Parish, Louisiana**, located south of Haughton. Surveyed in July 1999.

**"The Colorado Genealogist, Vol 63.3, August 2002"** published by the Colorado Genealogical Society, Denver, Colorado has on pages 26-28 an interesting article on using **Telephone Directories for Genealogical Research** by Terence T. Quirke, Jr. **The Telecommunication History Group, Inc. (THG)** has offices in Denver and is dedicated to preserving the nostalgia, lore, equipment and documents of this industry. They have some records for over 500 historic telephone companies **west of the Mississippi, 1878 - present**. Of particular interest to the genealogical community is one of the world's largest collection of telephone directories dating from 1890 to the present.

## BOOK REVIEWS

By Herman Weiland

Following three books were donated by Herman Weiland to the Genealogy Dept. of the Broadmoor Library.

TITLE: THE ARMS OF KRUPP (1587 - 1968) by William Manchester.

ORDER FROM: Used book stores. [www.bookfinder.com](http://www.bookfinder.com) or similar search locations.

COST: Dependant on Source ( \$ 0.75 - \$10.00)

This book is the story of the **KRUPP** family of Germany. The book makes interesting reading for both War Historians and Genealogists searching for the Krupp and allied families. The chronology of the Krupp family in Germany begins in 1587 with the arrival of **Arndt Krupp** in Essen. Moving forward the Krupp family founded a cast steel factory in 1812 and began manufacturing bayonets, muskets, cannons, ships, etc. They manufactured these implements of war through the close of WWI. The factories were dismantled at that time but the lack of supervision authority by the Allies and the rebuilding of the German Empire resulted in the factories being retooled in the 1920's. Krupp Steel began in earnest designing tanks, submarines and other implements of war. By 1940 they had perfected a cannon that could project shells across the Channel to England. The Krupp factories used thousands of slave laborers and in 1945, when the Allies stormed Germany, they arrested **Alfried Krupp**, then the head of the Krupp Firm. The 1948 War Crimes Tribunal convicted Alfried for his activities and he was sentenced to prison. He was released in 1951 and most of his holdings restored. By 1953 he had rebuilt his factories and was again the Ruler of the Industrial Ruhr Valley of Germany. He was proclaimed the most powerful industrialist in the Common Market by 1963. The Krupp Firm completed Germany's first nuclear power plant in 1967. The Firm's finances were beginning to collapse by this time. Alfried Krupp died in 1967 and the great Krupp Firm was dissolved in 1968. There is much family genealogy within the book along with interesting stories of this very influential family in German history.

1968, 6 X 10, 942 pgs, index, illustrations, bibliography, hard cover.

\*\*\*\*\*

TITLE: SOLDIERS WEST - Biographies from the Military Frontier, edited by Paul Andrew Hutton. Published by University of Nebraska Press.

ORDER FROM: Used book stores. [www.bookfinder.com](http://www.bookfinder.com) or similar search locations.

COST: Dependant on source ( \$4.95 - \$35.00)

Western frontier history is brought alive through these studies of the lives of important soldiers and their contributions in the taming of the west. These men all held Colonel or General military rank. Family information is given. The following 14 men are featured:

1. William Clark (Aug 1, 1770 - Sep 1, 1838)
2. Stephen H. Long (Dec 30, 1784 - Sep 4, 1864)
3. William S. Harney (Aug 27, 1800 - May 9, 1889)

4. James H. Carleton ( 1814 - Jan 7, 1873)
5. Philip H. Sheridan (Mar 6, 1831 - Aug 5, 1888)
6. George A. Custer (Dec 5, 1839 - Jun 25, 1876)
7. George Crook (Sep 8, 1828 - Mar 21, 1890)
8. John G. Bourke (Jun 23, 1846 - Jun 8, 1896)
9. Benjamin H. Grierson (Jul 8, 1826 - Aug 31, 1911)
10. Ranald S. Mackenzie ( 1840 - Jan 19, 1889)
11. William B. Hazen (Sep 27, 1830 - Jan 16, 1887)
12. Nelson A Miles (Aug 8, 1839 - May 15, 1925)
13. Frank D. Baldwin (Jun 26, 1842 - 1923)
14. Charles King (Oct 12, 1844 - Mar 17, 1933)

1987, 6 X 9, 276 pgs, index, pictures, soft cover

\*\*\*\*\*

TITLE: TRAILS WEST by The National Geographic Society.

ORDER FROM: Used book stores. [www.bookfinder.com](http://www.bookfinder.com) or similar search locations.

COST: Dependant on source ( \$1.50 - \$8.00)

We Americans have a unique love affair with the mention of the "Trails" that may have led our ancestors toward the west. The travelers on these trails were bold adventurers, willing to risk everything to better themselves. This book brings travel on the trails to life and shows some of the hardships those travelers faced on these 6 trails:

1. The Santa Fe Trail - Highway of Commerce.
2. The Oregon Trail - Road to Destiny.
3. The Morman Trail - Marching to Zion.
4. The California Trail - To the Rainbows End.
5. The Gila Trail - Pathway in the Desert.
6. The Bozeman Trail - North from the Platte.

Interesting reading especially if some of your ancestors used these trails.

1979, 8 X 10, 207 pgs, index, pictures, hard cover.

\*\*\*\*\*

### CORRECTION

"Where Did They Go", **The Genie, Vol 36.3, Page 129**, Third Quarter 2002.  
We regret the last 4 lines were omitted from the final paragraph. The entire paragraph is reprinted here.

Page 241

**Henry Becker** was born 6 July 1872 in **Kaufman County, Texas**. He was the son of **Igain and Ellen Becker**, both born in Tennessee. His Grandfather, **William Ernest Becker**, came to the United States in 1800 from Darmstadt, German and moved by way of Tennessee to Kaufman County in 1841. **Henry Becker** married **Lena Fox** daughter of **Joseph H. and Elvira Fox** on 18 May 1893 at **Wolf City, Hunt County, Texas**. She was born 9 February 1875 at Kaufman, Texas and died 8 August 1948 at Carlsbad, New Mexico. Henry Becker died 14 October 1949 at Albuquerque, New Mexico. They had three children Malcolm, Hazel and Virginia.

# Ancestor Chart

Name of Compiler Hazel Morgan  
 Address \_\_\_\_\_  
 City, State Bossier City, LA  
 Date Sept 23, 2002

Person No. 1 on this chart is the same person as No. \_\_\_\_\_ on chart No. \_\_\_\_\_.

Chart No. \_\_\_\_\_

b. Date of Birth  
 p.b. Place of Birth  
 m. Date of Marriage  
 d. Date of Death  
 p.d. Place of Death

4 **Jacob John Giddens**  
 (Father of No. 2)  
 b. Aug 1849  
 p.b. AL  
 m. c1885  
 d. \_\_\_\_\_  
 p.d. Bienville Ph. IA

2 **Isaac Earold Giddens**  
 (Father of No. 1)  
 b. May 7, 1890  
 p.b. Bienville Ph. LA  
 m. Nov 7, 1915  
 d. Jul 28, 1969  
 p.d. Bienville Ph. IA

5 **Sarah Amanda Shepherd**  
 (Mother of No. 2)  
 b. Aug 18, 1859  
 p.b. \_\_\_\_\_  
 d. Sep 30, 1937  
 p.d. Bienville Ph. LA

1 **Junie Hazelton Giddens**  
 b. Jun 2, 1929  
 p.b. Red River Ph, LA  
 m. Jun 21, 1947  
 d. \_\_\_\_\_  
 p.d. \_\_\_\_\_

6 **Robert Dean McGinty**  
 (Father of No. 3)  
 b. Mar 28, 1850  
 p.b. Cobb Co., GA  
 m. c1887  
 d. Feb 12, 1927  
 p.d. Bienville Ph., LA

3 **Mary Avie McGinty**  
 (Mother of No. 1)  
 b. Dec 26, 1895  
 p.b. Bienville PH., LA  
 d. Apr 13, 1989  
 p.d. Bienville Ph., LA

7 **Mattie Conly Cowart**  
 (Mother of No. 3)  
 b. Feb 2, 1865  
 p.b. Bienville Ph., LA  
 d. Jul 31, 1899  
 p.d. Bienville Ph., LA

**Hugh Morgan**  
 (Spouse of No. 1)

b. \_\_\_\_\_ d. \_\_\_\_\_  
 p.b. \_\_\_\_\_ p.d. \_\_\_\_\_

8 **Thomas Isaac Giddens**  
 (Father of No. 4)  
 b. Aug 1824  
 p.b. \_\_\_\_\_  
 m. \_\_\_\_\_  
 d. Jan 1904  
 p.d. \_\_\_\_\_

9 **Gabriela Hicks**  
 (Mother of No. 4)  
 b. Jan 1835  
 p.b. \_\_\_\_\_  
 d. \_\_\_\_\_  
 p.d. \_\_\_\_\_

10 **Cleeton Shepherd**  
 (Father of No. 5)  
 b. \_\_\_\_\_  
 p.b. \_\_\_\_\_  
 m. \_\_\_\_\_  
 d. \_\_\_\_\_  
 p.d. \_\_\_\_\_

11 **Susan Johnson**  
 (Mother of No. 5)  
 b. \_\_\_\_\_  
 p.b. \_\_\_\_\_  
 d. \_\_\_\_\_  
 p.d. \_\_\_\_\_

12 **William Jones McGinty**  
 (Father of No. 6)  
 b. Jun 22, 1814  
 p.b. Williamson Co., GA  
 m. c1835  
 d. Jun 15, 1896  
 p.d. Bienville Ph., LA

13 **Martha Davidson**  
 (Mother of No. 6)  
 b. 1815  
 p.b. \_\_\_\_\_  
 d. \_\_\_\_\_  
 p.d. Bienville Ph. LA

14 **Cullen Thomas Conly**  
 (Father of No. 7)  
 b. 1820  
 p.b. Antrim Co., Ireland  
 m. 1844  
 d. May 31, 1871  
 p.d. Bienville Ph., LA

15 **Dicy Talton**  
 (Mother of No. 7)  
 b. May 25, 1825  
 p.b. Houston Co., GA  
 d. Jul 1, 1896  
 p.d. Bienville Ph, LA

16 **Jacob Giddens**  
 (Father of No. 8, Cont. on chart No. \_\_\_\_\_)  
 b. Sep 18, 1794  
 m. Apr 18, 1817  
 d. 1873

17 **Elizabeth Waters**  
 (Mother of No. 8, Cont. on chart No. \_\_\_\_\_)  
 b. Jun 3, 1804  
 d. Oct 15, 1880

18 \_\_\_\_\_  
 (Father of No. 9, Cont. on chart No. \_\_\_\_\_)  
 b. \_\_\_\_\_  
 d. \_\_\_\_\_

19 \_\_\_\_\_  
 (Mother of No. 9, Cont. on chart No. \_\_\_\_\_)  
 b. \_\_\_\_\_  
 d. \_\_\_\_\_

20 \_\_\_\_\_  
 (Father of No. 10, Cont. on chart No. \_\_\_\_\_)  
 b. \_\_\_\_\_  
 d. \_\_\_\_\_

21 \_\_\_\_\_  
 (Mother of No. 10, Cont. on chart No. \_\_\_\_\_)  
 b. \_\_\_\_\_  
 d. \_\_\_\_\_

22 \_\_\_\_\_  
 (Father of No. 11, Cont. on chart No. \_\_\_\_\_)  
 b. \_\_\_\_\_  
 d. \_\_\_\_\_

23 \_\_\_\_\_  
 (Mother of No. 11, Cont. on chart No. \_\_\_\_\_)  
 b. \_\_\_\_\_  
 d. \_\_\_\_\_

24 **Thomas McGinty**  
 (Father of No. 12, Cont. on chart No. \_\_\_\_\_)  
 b. Sep 29, 1784  
 m. 1804  
 d. 1868

25 **Sarah Castleberry**  
 (Mother of No. 12, Cont. on chart No. \_\_\_\_\_)  
 b. \_\_\_\_\_  
 d. \_\_\_\_\_

26 \_\_\_\_\_  
 (Father of No. 13, Cont. on chart No. \_\_\_\_\_)  
 b. \_\_\_\_\_  
 d. \_\_\_\_\_

27 \_\_\_\_\_  
 (Mother of No. 13, Cont. on chart No. \_\_\_\_\_)  
 b. \_\_\_\_\_  
 d. \_\_\_\_\_

28 \_\_\_\_\_  
 (Father of No. 14, Cont. on chart No. \_\_\_\_\_)  
 b. \_\_\_\_\_  
 d. \_\_\_\_\_

29 \_\_\_\_\_  
 (Mother of No. 14, Cont. on chart No. \_\_\_\_\_)  
 b. \_\_\_\_\_  
 d. \_\_\_\_\_

30 **Cullen Talton**  
 (Father of No. 15, Cont. on chart No. \_\_\_\_\_)  
 b. 1780  
 m. \_\_\_\_\_  
 d. 1851

31 \_\_\_\_\_  
 (Mother of No. 15, Cont. on chart No. \_\_\_\_\_)  
 b. \_\_\_\_\_  
 d. \_\_\_\_\_

Form A2 Copyright 1983 by The Everton Publishers, Inc., P.O. Box 368, Logan, Utah, publishers of THE GENEALOGICAL HELPER. Send for a free catalogue with lists and full descriptions of many genealogical aids

*Eighth Annual  
Conly Family Reunion*



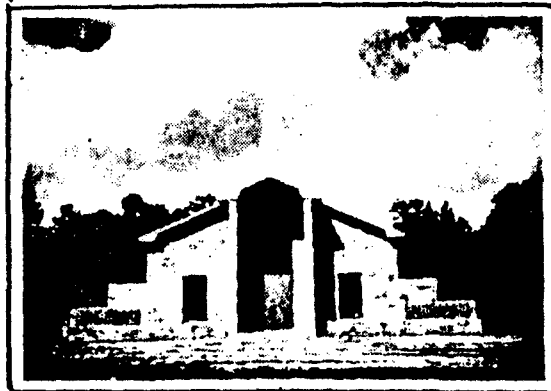
CULLEN THOMAS CONLY



DICY TALTON CONLY

**JUNE 26, 1977**

*Springhill Baptist Church*



ROUTE 1, BOX 112, RINGGOLD, LOUISIANA

## SPRINGHILL COMMUNITY, BIENVILLE PARISH, LOUISIANA

Compiled by Herman L. Weiland  
Information Provided by Hazel (Giddens) Morgan

The Springhill Community is generally considered to be that area within a five mile radius surrounding the Springhill Baptist Church. This would include portions of Red River Parish since the Red River parish line is just 400 yards to the south of the church. The church is located south west of the town of Ringgold on the old Coushatta - Minden Road. State Highway 783.

To look at the history of the Community is to look at the history of the church. The church had its beginning in 1859 when a loosely knit group met in the home of **Simon Manning**, formed a church, and met sporadically in the homes of the members for the next 10 years. Paxton's History of Louisiana Baptists states that this group called themselves the Grand Bayou Baptist Church and lists nine charter members of that church. These were: **Floyd Allums, B. F. Allums, M. L. Allums, S. J. Allums, Lolly Allums, Mary Conly, Newton Poter, Sara E. Lord and Jane Grant.**

The church was declining in attendance and zeal and the **Reverend John Dupree** (See **THE GENIE**, Volume 36 Number 2, page 79) was sent to revitalize the people. On July 12, 1870 an organization meeting was held in the Cawthon School house and the new Springhill Baptist Church was constituted with the Reverend Dupree as the First Pastor. Paxton's History of Louisiana Baptists states that there were 14 charter members of this new church however only the nine who were charter members of the Grand Bayou Church are listed by name. This newly formed church needed a place to meet and **Thomas Cullen Conly**, who had come to Bienville Parish in 1857 with his family, agreed to donate 40 acres of land on which to build the church. The building was started shortly after the July 1870 formation date and was used both as a school and as a church. However, Mr. Conly failed to make the trip to Old Sparta, seat of Bienville Parish and record the deed for his gift. After his death in 1871 the 40 acres were subsequently purchased by a railway company in New Orleans. The church members did not know of this transaction until 1890 and found they had been using and building on land, for some 20 years, that did not belong to them. The oldest son of Thomas Cullen Conly, **Cullen Jefferson Conly**, went to New Orleans in 1891 and purchased those 40 acres from the railway company. He then sold it to the deacons of the Springhill Baptist Church in 1893 for \$60.00. Those deacons were: **J. H. Lee, E. Wimberly, F. C. Boies, J. F. Conly and B. F. Allums.** The property was for the use and benefit of the Springhill Baptist Church and included all the improvements on the property. These men held title to this property until August 14, 1915 when they sold it to the church for the \$60.00 they had paid for it. This deed was recorded in Bienville Parish, Registry No. 6440 and filed March 6, 1916. Finally, after some 45 years of utilizing the property, the church now had clear title to that property. The Springhill Church has grown through the years and now has modern buildings in which to meet and a full time pastor.



Following is a list of the early pastors of the church:

1870-1873 John Dupree	1916-1916 J. R. Edwards
1873-1874 E. N. Kirtley	1916-1921 R. W. Singleton
1874-1875 John Dupree	1921-1927 W. D. Alford
1875-1876 R. W. Singleton	1927-1935 U. K. Perego
1876-1892 W. H. Chandler	1935-1937 E. E. Fields
1893-1897 J. H. Nettles	1938-1940 D. E. Byrd
1897-1898 J. F. Moreland	1941-1945 J. H. Hucabee
1898-1900 J. H. Nettles	1945-1945 J. W. Goss
1900-1910 W. D. Alford	1945-1947 Joseph Callia
1911-1912 M. A. Price	1947-1948 George Werner
1912-1915 J. M. Brooks	1948-1953 Carter Hall
1915-1916 W. D. Alford	1953-1961 S. J. Sylvest

The Springhill Cemetery is located directly across the road from the church and the property had been used for many burials. Some small property transfers may have taken place but mostly people just buried their family on the land. The Springhill Cemetery Association finally purchased 10 acres of this land from **N. T. Wood** on May 7, 1951 and later transferred this 10 acres, plus 8 acres they already owned, to the Springhill Cemetery, Inc. on October 28, 1977. This deed was recorded in Red River Parish, Registry No. 7453 and filed November 30, 1977. The Cemetery is well kept but many of the stones are beginning to show the wear of age.

## PIONEER SPRINGHILL COMMUNITY FAMILIES

### CONLY FAMILY

**Cullen Thomas Conly**, identified as providing the land on which the Springhill Baptist Church sits, was born near Mt. Conly in County Antrim, Ireland in 1820, came to the US, landing in Savannah, Georgia, as a stowaway in 1836. He had moved to Houston County, Georgia by 1844 as it was in that year he married **Dicy Talton** born May 25, 1825 and died July 1, 1896. Dicy was the daughter of **Cullen Talton**, born 1780, in North Carolina. Cullen and Dicy moved to Bienville Parish, Louisiana by September 23, 1845 as their first child was born on that date at that location. Cullen was granted citizenship on September 1, 1857 at the District Court in Bienville Parish. Cullen Thomas Conly died on May 31, 1871 per tombstone date or 1872 per family genealogy dates. The Conly family is proud of their family heritage and held reunions each year from 1970 through 1981 at the Springhill Baptist Church. Starting with the 3rd Annual Reunion held in 1972 the descendants of the children of Cullen Thomas and Dicy Conly were given special emphasis and encouraged to attend. The ten children of this couple and the year that the descendants were honored at the reunion are given:

1972 - **Cullen Jefferson Conly** born September 23, 1845 and died March 1, 1922, married, on January 5, 1868, **Mary Tutson** born August 13, 1850 and died December 18, 1913. Cullen and Mary had seven children. 1) William Thomas

Conly (1870-1915). 2) Cullen Clark Conly (1873-1899) 3) James A Conly (1877-1877-6mons) 4) Sarah Ann Conly (1878-1918) 5) Henry Walter Conly (1881-1934) 6) Molly Dicy Conly (1884-1962) 7) Fannie Elizabeth Conly (1887-1974).

1973 - **Margaret Lucy Conly** born August 20, 1847 and died November 26, 1906, married on July 5, 1866, **Benjamin Franklin Allums** born December 24, 1844 and died June 20, 1928. Benjamin and Margaret had seven children. 1) Louraine Atkins Allums (1869-1914) 2) Charlotte Dicy Allums (1872-1953) 3) Henry Cullen Allums (1874-1875) 4) Claude Clinton Allums (1876-1931) 5) Infant Unnamed (1880) 6) William Benjamin Allums (1882-1948) 7) John Franklin Allums (1884-1958).

1974 - **Mary Jane Conly** born October 22, 1849 and died July 27, 1932, married in late 1869 or early 1870 **Usir E. Leshe** born April 17, 1840 and died March 6, 1934. Usir and Mary had fourteen children. 1) Ella Josephine Leshe (1871-1961) 2) Margaret Leshe (1872-195?) 3) James Thomas Leshe (1873-1961) 4) Joseph Irvin Leshe (1875-1957) 5) Mattie Maude Leshe (1877-1932) 6) William Eugene Leshe (1879-1941) 7) Martin William Leshe (1880-1955) 8) Baby Girl (c1881/82) 9) Gervie H. Leshe (1883-1965) 10) Frank Leshe (1885-1917) 11) Twin -Fannie Leshe ( 1885-1964) 12) Cyril Leshe (1887) 13) Paul Leshe (1890-1974) 14) Usir Leshe Jr. (1892-1950).

1975 - **Laura Ann Conly** born May 7, 1852 and died March 19, 1885. married on November 12, 1871 **Rev. Joseph H. Nettles** born March 12, 1845 and died November 24, 1910. Joseph and Laura had eight children. 1) Thomas William Nettles (1872-1930) 2) Carlie Frances Nettles (1874-1877) 3) Lorena Estell Nettles (1875-1954) 4) Jennie B. Nettles (1879-1947) 5) Joseph Cullen Nettles (1880-1939) 6) Dicy Pearl Nettles (1883-1885) 7) Leshe Theodore Nettles (1885-1956) 8) Laura Nettles (Mar1885-May 1885)

1976 - **Martin William Conly** born January 2, 1854 and died August 12, 1917, married prior to 1872 **Mattie McCrary** born October 14, 1854 and died August 22, 1942. Martin and Mattie had ten children. 1) Cora L. Conly (1872-1940) 2) John Franklin Conly (1874-1938) 3) Thomas Conly (1876-1954) 4) William Shelly Conly (1879-1956) 5) June R. Conly (1881-1943) 6) Lofa A Conly (1884-1938) 7) Annie Blanche Conly (1886) 8) Vander Martin Conly (1889-1925) 9) Colonel Pope Conly (1893-1894) 10) Mattie Lou Conly (1895-1926).

1977 - **Thomas Eugene Conly** born June 13, 1856 and died May 7, 1929, married November 9, 1873 **Mary E. Hall** born March 11, 1858 and died February 18, 1922. Thomas and Mary had ten children. 1) Isaac Conly (1875-1876) 2) Viola Conly (1877-1938) 3) William Bert Conly (1879-1965) 4) Mary Irene Conly (1882-1965) 5) Lucy Idonie Conly

(1886) 6) Francis Nicholls Conly (1888-1909) 7) Cullen J. Conly (1889-1951) 8) Arnal B. Conly (1892-1893) 9) Ava Conly (1896)  
10) Harvey Conly (1899-1974).

1978 - **John Franklin Conly** born October 2, 1858 and died August 14, 1916, married January 21, 1880 **Frances Elizabeth Riley** born 1859 and died 1953. John and Frances had five children. 1) Travis Thomas Conly (1880-1951) 2) John Winfield Conly (1883-1927) 3) Jarred Penn Conly (1886-1947) 4) Unie Gertrude Conly (1888-1976) 5) Atlee Bryan Conly (1894-1980).

1979 - **James Philip Conly** born August 25, 1860 and died August 9, 1931, married December 22, 1878 **Martha Jane Carter** born March 3, 1862 and died December 5, 1943. James and Martha had ten children. 1) Camille Conly (1880-1914) 2) Telitha Conly (1881-1954) 3) Leona Conly (1884-1959) 4) Isaac Philip Conly (1884-1959) 5) Margaret A Conly (1889) 6) Effie Conly (1891-1894) 7) Allie C. Conly (1893- ) 8) James Merrill Conly (1895-1982) 9) William Bryant Conly (1897-1975)  
10) Janie Ceola Conly (1902- ).

1980 - **William Henry Conly** born November 9, 1862 and died September 25, 1916, married August 5, 1883 **Sarah Frances Giddens** born September 28, 1868 and died August 2, 1943. William and Sarah had five children. 1) Minnie Ola Conly (1884-1959) 2) Charlie Chester Conly (1886-1965) 3) Doshia Pearl Conly (1889-1950) 4) Henry Millard Conly (1892-1900) 5) Callie May Conly (1895-1975).

1981 - **Martha Mahalia "Mattie" Conly** born February 2, 1865 and died July 31, 1899, married 1st about 1882 **Young L. Cowart** who died 1885. Young and Martha had three children. 1) Katie Lillian Cowart (1883-1957) 2) William Arthur Cowart (1884-c1885) 3) Young Adolphus Cowart (1885-1959) Martha 2nd c1887 **Robert Dean McGinty** born March 28, 1850 and died March 12, 1927. He was a widower with 5 living children at the time. Robert and Mattie had five children 1) Laura Genary McGinty (1888-1934) 2) Cora Mae McGinty (1890-1972) 3) Louisiana McGinty (1892-1947) 4) **Mary Avie McGinty** (1895-1989) (5) June Gipson McGinty (1898-1959) The fourth child **Mary Avie McGinty** married **Isaac Earold Giddens** and are the parents of **Hazel (Giddens) Morgan** who provided the information for this article.

### McGINTY FAMILY

**William Jones McGinty**, the son of **Thomas McGinty** and **Sarah Castleberry**, was born on June 22, 1814 and died June 1896, his stone in Springhill Cemetery reads Jan 22, 1814 - June 15, 1898. He married **Martha Davidson** c1835. They arrived in Louisiana between 1855 and 1859 and settled in the Springhill Community area. William and Martha had nine children.

1. **Mary Ann McGinty** born December 30, 1836 and died June 23, 1925, married c1853 **Francis Marion Jolley** born December 29, 1831 and died December 20, 1917. Francis and Mary Ann had six children. 1) William T. Jolley (1854-1937) 2) Clarinda Augustine Jolley (1855- ) 3) Christopher Columbus Jolley (1860-1941) 4) Jefferson F. Jolley ( - ) 5) Robert Gibson Jolley ( - ) 6) Walter Joseph Jolley (1871-1964)

2. **Thomas J. McGinty** born 1838 and died October 21, 1863. He served in the Confederate Army. No other information.

3. **Zadok McGinty** born 1840, no other information.

4. **James McGinty** born 1842, He served in the Confederate Army and discharged July 17, 1862, no other information.

5. **Amanda McGinty** born 1845, married **Dave Brown**, 4 or 5 children. no other information. 1) Virgie Brown 2) Joe Brown 3) Arch Brown 4) Emma Brown 5?) Bud Brown. May be nickname for one of the other boys.

6. **Ann Elizabeth McGinty** born 1848 and died January 30, 1884, married February 15, 1866 **Isaac Newton Yates** born November 28, 1845. Isaac and Ann had five children. 1) Robert T. Yates (c1869- ) 2) William Joseph Yates (1873-1956) 3) Euna Yates (no record) 4) Nila Yates (1876 -1919) 5) Isiah Yates (1883-1932)

7. **Robert Dean McGinty** born March 28, 1850 and died March 12, 1927, married first on October 24, 1869 **Arvy (Arvie) Smith** who died 1884. Robert and Arvy had seven children. 1) Jackson Walthrop McGinty (1870-1912) 2) Alonzon Eugene McGinty (1873-1946) 3) Authur Levy McGinty (1875-1942) 4) Robert Theodore McGinty (1878-1954) 5) Emma McGinty (1881-1881) 6) Charley McGinty (1883-1883) 7) James Elwood McGinty (1884-1898). Robert then married the widow of **Young L. Cowart, Martha Mahalia "Mattie" Conly Cowart**, in 1887. She died in 1899. Robert and Mattie had five children. (See the Martha Conly family above for these children). Robert married for the third time prior to 1906 **Mary Alice Scott McCoy** born August 6, 1866 and died February 22, 1958. Robert and Mary had only one daughter **Maggie Katherine McGinty** (1907-1995).

8. **William Gibson McGinty** born July 21, 1852 and died July 16, 1939, married first on November 28, 1869 **Emma Cynthia Smith**, sister of Arvy Smith who married his brother Robert Dean. Emma died c1879. William and Emma had four children. 1) William Edward McGinty (1871-1871) 2) Oliver Robert McGinty (1872-1945) 3) Joseph Eugene McGinty (1876-1943) 4) Frances Alice Genevra McGinty (1877-1907). William married second on March 2, 1881 **Mary Harriet Kolb**. William and Mary had ten children. 1) Vivian Kolb McGinty (1881-1953) 2) Charles Gibson McGinty (1884-1886) 3) Albert Lee McGinty (1886-1966) 4) Florida Gertrude McGinty (1888-1891) 5) Ernest Alexander McGinty (1890-1949) 6) Ella McGinty and 7) Elizabeth McGinty twins born Jul 31 and died August 1, 1888. 8) Earl Dobson (1893-1974) 9) Ruth Mary McGinty (1896-1991) 10) Nila Evelyn McGinty (1902-1996).

9. **Joseph BeeBee McGinty** born December 9, 1854 and died December 23, 1936, married in 1892 **Margery Louise Templar**, born December 16, 1855 and died January 7, 1937. Joseph and Margery had five children. 1) Zoe Nila McGinty (1884-1963) 2) Eva Marie McGinty (1886-1978) 3) Hazel Helene McGinty (1890-1956) 4) Joseph B. McGinty, Jr. (1894-1975) 5) Walter Gibson McGinty (1898-1956)

### GIDDENS FAMILY

**Jacob Giddens** was born September 18, 1794 and died December 7, 1873, married in April 1817 **Elizabeth Waters** born June 3, 1804 and died October 15, 1880. Came from Alabama to the Loggy Bayou Area, Ringgold, Louisiana c1855. Both are buried in the Pleasant Grove Cemetery in Ringgold. Jacob and Elizabeth had six children.

1. **Thomas Isaac Giddens** born August 1824 and died January 1904, married **Gabriella Hicks** born January 1835. Thomas and Gabriella had ten children 1) **Jacob John Giddens** (See further information) 2) James Giddens (1850- ) 3) Mary Elviann Giddens (1854- ) 4) Betty Giddens (1856- ) 5) Isaac Giddens (1859- ) 6) Daniel Collier Giddens (1860-1939) 7) Needham Giddens (1864-1940) 8) Elizabeth Giddens (1865- ) 9) Doctalor F. Giddens (1866- ) 10) Josephine Giddens (1867- )

Child # 1, **Jacob John Giddens** born August 1849 married **Sarah Shepard** born April 18, 1859 and died September 30, 1937. Jacob and Sarah had seven children 1) George W. Giddens (1886- ) 2) Willie Giddens (1890- ) 3) Rena J. Giddens (1895- ) 4) Lola Giddens (1898- ) 5) Wilton Lee Giddens (1881-1960) 6) **Isaac Earold Giddens** (See further information) 7) Governor H. Giddens (Apr 8, 1898-Dec 19, 1898)

Child # 6. **Isaac Earold Giddens** born May 7, 1890 and died July 28, 1969, married on November 7, 1915, **Mary Avie McGinty** born December 26, 1895 and died April 13, 1989. Isaac and Mary had seven children: 1) Earold Donovan Giddens (1916- ) 2) Ellora Mahalia Giddens (1917-1918) 3) Laurette Giddens (1920-1994) 4) Henry Vowell Giddens (1923- ) 5) Ora Gene Giddens (1926- ) 6) **Junie Hazelteen (Hazel) Giddens** (1929- ) 7) Aubrey Harrell Giddens (1932- ).

Note: Child # 6 **Hazel Giddens Morgan** furnished the information for this article.

2. **Mitchel Giddens** born June 1, 1828 and died September 1, 1862, married March 11, 1849 **Elizabeth Frances Seay** born February 1, 1828 and died March 6, 1876. Mitchel and Elizabeth had three children. 1) Nancy Chloe Giddens (1850-1935) 2) Elizabeth Annie Giddens (1856-1916) 3) John Mitchel Giddens (1858-1883).

3. **Jacob M. Giddens** born April 9, 1834 and died February 22, 1915, married c1859 **Prudence Allums** born May 14, 1840 and died April 17, 1907. Jacob and Prudence had five children. 1) Alabama "Allie" Giddens (1860-1951) 2) Sarah Frances Giddens ( - ) 3) Charlie Creton Giddens ( -1935) 4) Henry Giddens (1874-1959) 5) Sank Giddens (1880-1952).

4. **Elizabeth Jane Giddens** born April 11, 1836 and died December 28, 1928, married c1853 **George W. Moore** born January 8, 1831 and died October 29, 1882. George and Elizabeth had nine children. 1) Mitchel Joel Moore (1854-1950) 2) Thomas F. Moore (1866-1959) 3) Martha Jane Moore (1869- ) and twin 4) Robert H. Moore (1869- ) 5) Lillian Moore (1871- ) 6) Fannie E. Moore (1873- ) 7) Fleming Moore (1875- ) and twin 8) Lemuel Moore (1875-1888) 9) James Mallie Moore (1878-1899).

5. **Mary Elizabeth Giddens** born 1838 and died 1918, never married.

6. **Needham Giddens** born May 20, 1842 and died December 8, 1876, married c1867 **Harriet "Hattie" Key** born December 12, 1846 and died September 21, 1922. Needham and Harriet had two children. 1) **Tandy Key Giddens** (1868-1930) 2) Rena Giddens (1870- )

**Note: Tandy Key Giddens** was a prominent businessman and builder. He and fellow businessman **Charles Lane** built the 10 story Giddens-Lane Building in downtown Shreveport to house the Giddens-Lane Company Inc., a real estate development firm. The structure still stands, although it is now known as the Lane Building. He also constructed the well known "Castle" in Bossier City which has since burnt.

The Genealogy of these three families has been presented very briefly. Further information on these and other related families may be gained from the following books:

**History of Bienville Parish** Vol 1 and 2 (c1984)

**Red River Parish: Our Heritage** by Red River Parish Heritage Society (1989)

**Three Segments of a Rural Community: Church, Cemetery, Conly Family Reunion** by Garnie W. McGinty (1983)

**An Irish Stowaway** by Garnie W. McGinty and Etoyle Conly (1976)

**A Twig of the McGinty Family Tree** by Garnie W. McGinty (1979)

**Jeroline, An Illustrated Biography of Jeroline Perry Baumgardner with Related Genealogy of the Batchelor, Davis, Giddens, Perry, Thomas & Waters Families of Bienville Parish, Louisiana** by Euzelia Bumgardner Chase (1994)

## *Springhill Baptist Church*



ROUTE 1, BOX 112, RINGGOLD, LOUISIANA

# From log cabin to castle

**Castle builder:**  
Early statesman's  
life is rags-to-riches  
tale.

By **BOB SWEET**  
This Week

**T**ANDY KEY GIDDENS died more than 60 years ago, and few people in Caddo-Bossier remember his name. In his time, Giddens was a powerful businessman and major mover in Shreveport.

But the Webster Parish native is best known for the two tall monuments he left behind. The 10-story Lane Building downtown and Northwest Louisiana's only castle, once located in Bossier Parish.

Late in his life, Giddens told his rags-to-riches story to Ben F. Lloyd, who wrote it up for a book Giddens published privately in 1929.

Giddens was born Sept. 27, 1868, and spent much of his childhood in a log cabin on a 40-acre farm two miles from Ringgold. Like most families of the time, the Giddenses depended on corn for sustenance and cotton for their subsistence income.

Young Tandy's father died when the boy was 8, and by the age of 14, the boy was head of the household and the family farm, working hard and paying off his debts. He was a young, ambitious man with no set plans.

Then, at the age of 15, Giddens took a trip he described in his book as "an epoch in my life." A neighbor took him on a two-day journey to Shreveport.

They drove all day and camped at night, eventually taking the ferry across the Red River.

"How dazzling were the bright lights," Giddens said. "Stores and saloons were all lighted up, full of men and women, black and white, drinking, swearing and engaged in loud, boisterous conduct."

By the time his book was published, Giddens had traveled all over the United States and Europe, visiting some of the most notorious cities on the globe. But in the book, he said that Shreveport, with its bustling commerce and corruption, "was about the toughest of them all."

Giddens grew up determined to succeed on the values of hard work and thrift. He invested in farms, a store and real estate.

While living in Campti, he founded Citizens Bank, served as mayor and congressional committeeman and served on several town boards.

In 1915, Giddens followed the oil boom to Shreveport and invested heavily in the expanding town. Eight years later, he and fellow businessman Charles Lane built the 10-story Giddens-Lane Building downtown to house Giddens-Lane Company Inc., a real estate development firm.

The structure still stands, although it is now known as the Lane Building.

Later in the '20s, Giddens finally built the house on the hill that must have seemed a lifetime away to a man who grew

up in a log cabin.

The four-story structure, which looked like a huge guardhouse, sat atop a commanding hill on Highway 80 near Fillmore.

On a clear day, viewers could see all the way to Arkansas and Texas from the top battlement.

Giddens died in 1930, but Giddens Castle outlasted its builder by only a few years. The castle became a nightclub, the site of gala parties for the Caddo and Bossier parish elite.

And in the late '30s, the castle burned down.

With its destruction, Northwest Louisiana lost its last remnant of medieval architecture, as well as the culmination of ambition for one of this area's founding fathers.

But the Giddens legacy survives.

The Lane Building still stands, and a host of grandchildren and great-grandchildren still live and work in Caddo and Bossier parishes.



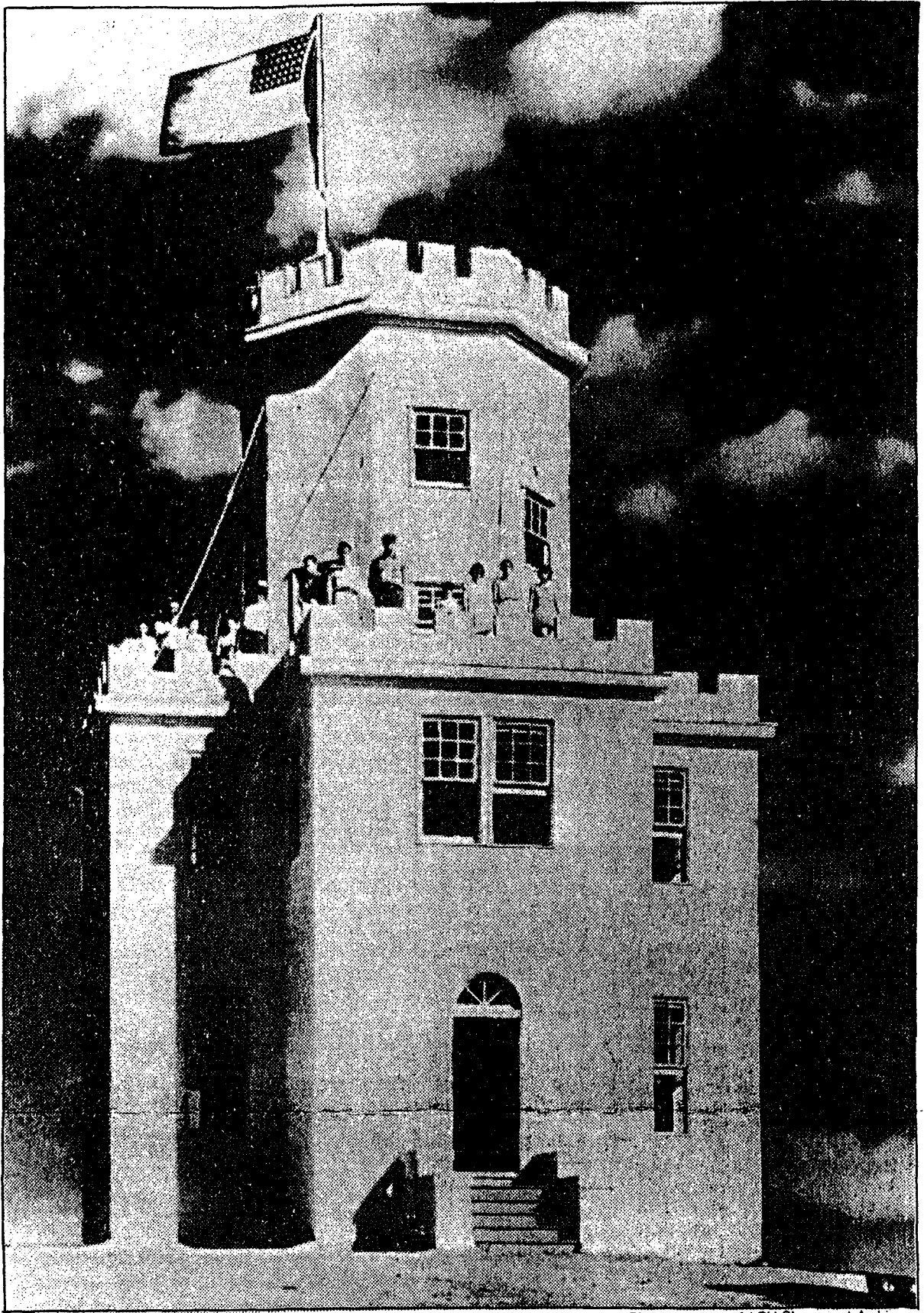


Photo courtesy of LSU-Shreveport Archives

**A castle once stood in Bossier Parish. Giddens Castle, built by Shreveport businessman**

**Tandy Key Giddens, stood on a hilltop on Highway 80 near Fillmore.**



**Springhill Community Cemetery Listing**  
**Bienville Parish, Louisiana**  
**Compiled by Herman L. Weiland**  
 Incomplete, Older Burials Only

Name	Born	Died	Comments
Allums, B. F.	Dec 24, 1844	June 20, 1928	
Allums, Margaret L.	Aug 20, 1847	Nov 26, 1906	Wife of B. F.
Allums, Infant	Feb 9, 1880	Feb 11, 1880	Child of B. F. & M. L.
Allums, Henry C.	Apr 19, 1874	Oct 2, 1875	Son of B. F & M. L.
Allums, C. C.	Dec 4, 1876	Dec 27, 1931	M.D.
Allums, Minnie O.	Jan 28, 1877	Jul 29, 1930	Wife of C. C.
Allums, Eunice Esther	Sep 5, 1903	Aug 21, 1904	Dau of C. C
Allums, Infant	Apr 8, 1901	Apr 8, 1901	Child of C. C
Allums, John Henry	Jul 30, 1855		
Allums, Sarah Eliza	Aug 28, 1857	Sep 10, 1938	Wife of J. H.
Allums, Ollie Lou	Aug 18, 1898	Oct 9, 1898	Dau of J. H. & S.E.
Allums, Cumalie	Nov 26, 1900	Jan 3, 1904	Dau of J.H. & S.E.
Allums, J. M.	Jan 17, 1880	Jan 21, 1880	Son of J.H & S.E.
Allums, E. F.	Dec 9, 1868	Jan 20, 1904	Dr.
Allums, Josie P.	Mar 11, 1876	Mar 9, 1896	Wife of E.F.
Allums, Kreleray	Oct 28, 1902	Jan 11, 1904	Son of E.F & I.E.
Allums, Una M.	Feb 10, 1884	Sep 7, 1894	
Allums, C. L.	Jul 3, 1881	Dec 25, 1934	
Allums, Mary F.	Feb 26, 1837	Mar 22, 1924	
Allums, Henry Marston	Sep 20, 1888	Oct 22, 1936	
Allums, Pattye C.	May 13, 1891	Apr 29, 1952	
Allums, Teny	Oct 8, 1871	Feb 20, 1889	
Allums, Annie Blanche	Apr 14, 1886	197?	Wife of Matt
Allums, Loy L.	1916	1932	
Allums, Nancy	Dec 13, 1837	Aug 23, 1922	Wife of Jim
Allums, Eula Belle	Oct 4, 1902	Aug 31, 1913	Dau of C.L & Lillie
Allums, Ruby Lois	Nov 20, 1911	Feb 1, 1912	Dau of S.S & Louie
Allums, Viola Grace	Oct 14, 1908	Jan 29, 1910	
Allums, Infant	Jul 5, 1906	Jul 5, 1906	Child of W.M & A.B
Allums, Infant	Jan 19, 1920	Jan 19, 1920	Son of Orié & Floy
Allums, Melba Adeline	Mar 16, 1921	Oct 17, 1936	Dau of Orié
Armistead, Gladis Olice	Oct 2, 1892	Jun 14, 1895	
Armistead, Corna E.	Aug 18, 1874	Mar 4, 1901	Wife of R.H.
Armistead, Edwin, W.	Aug 27, 1894	Aug 28, 1900	Son of R.H. & C.E.
Armistead, Owens M.	Dec 17, 1900	Jun 23, 1901	Son of R.H. & C.E.
Bailey, William	Jan 11, 1883	Apr 24, 1917	
Bailey, Fonie	Apr 27, 1917	May 6, 1917	Dau of W.R & Leona
Bailey, Infant	Apr 27, 1917	May 6, 1917	Dau of W.R. & Leona
Bailey, James Elwin	Jun 26, 1936	Mar 21, 1939	Son of J.W.

**Springhill Community Cemetery Listing, Bienville Parish, Louisiana (Cont'd)**

<b>Name</b>	<b>Born</b>	<b>Died</b>	<b>Comments</b>
Bailey, Leona	Dec 10, 1884	Oct 2, 1959	
Baker, Amos	Feb 19, 1892	Jan 16, 1897	
Baker, Infant		1890	Child of H.A. & E. L.
Barganies, Marcillia Ophelia	Sep 15, 1858	Oct 5, 1929	
Bartley, Infant		Jul 12, 1954	Son of Cecil R.
Bartley, Hazel Marie	Jul 5, 1924	Sep 5, 1924	
Bartley, Jessie Viola	Jun 22, 1925	Sep 19, 1927	
Bartley, Velma Lee	Aug 19, 1928	Sep 5, 1928	
Bartley, Viola	Dec 4, 1874	Nov 7, 1945	
Bartley, Leon	Sep 8, 1862	Jul 15, 1950	
Bartley, Leon Valentine		May 15, 1954	Aged 82y, 15d
Beckham, Fletcher, Henry	Oct 11, 1876	May 6, 1928	
Beckham, Joseph O.	Oct 31, 1844	Mar 12, 1895	
Beckham, Joe	1872	1946	
Beckham, Sarah Ruth	Oct 7, 1940	Oct 7, 1940	Dau of Stevie
Beckham, Velma	Mar 3, 1911	Apr 25, 1967	
Blackman, Joseph	Jun 22, 1880	Jan 23, 1900	Son of T. & F.J.
Blackman, Infant	Apr 27, 1915	Apr 27, 1915	Son of Tom & Hattie
Blackman, Lema	Mar 18, 1873	Oct 4, 1874	
Blackman, Lula	Feb 12, 1871	Aug 11, 1878	
Blackman, Theophilus	Jul 17, 1846	Mar 16, 1902	
Blackman, Frances J. Sheppard	Feb 17, 1848	Feb 4, 1917	Wife of Theophilus
Blake, Cory	Mar 12, 1925	Mar 25, 1930	
Boies, Tinnie J.	Apr 20, 1855	Jun 1, 1930	Wife of F. C.
Boone, Olivia Weems Carlisle	1880	1944	
Box, Bessie Pearl	Apr 25, 1879	Feb 22, 1957	
Box, Aubry Pardall		Mar 21, 1958	Age 55y, 11m, 1d
Bryan, Helen I. Hayes	Mar 17, 1917	Mar 17, 1925	Dau of Dosha Bryan
Breedlove, Elmer	Feb 17, 1905	Feb 19, 1937	
Breedlove, Elsie Donese		Feb 16, 1927	
Bullock, Arcie Bryant	Dec 17, 1898	Jul 16, 1901	
Bullock, Carrie L.	Mar 27, 1875	Feb 26, 1910	Wife of M. F.
Bullock, W. O.	Jun 8, 1878	Feb 1918	
Burkett, Bartiller	Jun 5, 1886	May, 22, 1891	
Burkett, Lugresie	Feb 2, 1835	Apr 7, 1918	
Burkett, Martha E.	Jun 20, 1847	Dec 12, 1904	
Burkett, Phurnettie Bartilla	Jan 16, 1842	Jun 15, 1926	
Carter, Jessie A.		Oct 27, 1940	Aged 72 yrs
Carter, Annie	1871	1941	
Carter, William Coyl	1866	1947	
Carter, Elwood	Oct 10, 1896	Feb 14, 1919	

**Springhill Community Cemetery Listing, Bienville Parish, Louisiana (Cont'd)**

<b>Name</b>	<b>Born</b>	<b>Died</b>	<b>Comments</b>
Carter, Joseph H.	May 16, 1893	Feb 14, 1944	
Carlisle, Adolpheese	Feb 20, 1889	Nov 20 1923	
Carlisle, J. S.	Dec 21, 1838	Oct 7, 1923	
Carlisle, Mary M.	Dec 27, 1847	Jul 22, 1927	Wife of J. S.
Carlisle, R. Clyde	Apr 28, 1884	Apr 4, 1943	
Carlisle, Edwin Alonzo	1869	1942	M.D.
Carlisle, Margaret A.	Sep 17, 1889	Jun 1976	
Carlyslle, Henry Augustus	Jul 28, 1874	Dec 2, 1955	
Carlyslle, Susie E.	May 28, 1876	Feb 22, 1907	
Carraway, Andres	Jan 6, 1900	May 31, 1974	
Carraway, Callie C.	Aug 7, 1895	Jun 30, 1975	
Clark, Willie Mrs	Apr 9, 1888	Apr 7, 1958	
Clark, Sidney Arnold	1914	1935	Son of A.T.
Cole, D. C. Mrs.	Nov 8, 1849	Oct 21, 1915	
Conly, Infant	Oct 31, 1922	Oct 31 1922	Child of Phil
Conly, T. E.	Jun 13, 1856	May 17, 1929	Husb of Mary E.
Conly, Mary E.	Mar 11, 1858	Feb 18, 1922	Wife of T. E.
Conly, Arnold B.	Dec 2, 1892	Aug 4, 1893	Son of T.E & M.E.
Conly, Isaac	Apr 23, 1875	Sep 7, 1876	Son of T.E & M.E.
Conly, Lofie	1885	1938	
Conly, Henry Millard	Feb 20, 1892	Sept 15, 1900	Son of W.H. & S. F.
Conly, Julian M.	Nov 6, 1915	Mar 15, 1926	
Conly, William H.	Nov 9, 1862	Sep 25, 1916	
Conly, Sarah F.	Sep 28, 1868	Aug 1, 1943	Wife of W. H.
Conly, Mattie L.	Oct 14, 1854	Aug 25, 1942	
Conly, Martin	Jan 2, 1854	Sep 15, 1917	
Conly, Infant son		Dec 1, 1911	
Conly, Infant dau		Dec 23, 1912	
Conly, Infant son		Nov 12, 1914	
Conly, Thomas	Aug 22, 1876	Jun 11, 1954	Husb of Nora
Conly, Nora Wilson	May 1, 1881	Jul 1, 1970	Wife of Thomas
Conly, Colonel Polk	Apr 3, 1893	Jul 21, 1894	Son of I.W & M.L
Conly, Dicy T.	May 25, 1825	Jul 1, 1896	
Conly, Cullen T. Sr.	1820	May 31, 1871	Born in Ireland
Conly, Martha J.	Mar 3, 1862	Dec 5, 1943	Wife of James Francis
Conly, Francis N.	Feb 9, 1888	Nov 25, 1909	
Conly, Francis Corinne	Nov 16, 1907	Aug 30, 1909	
Conly, James P.	Jul 25, 1860	Aug 9, 1931	Husb of Martha J.
Conly, Frances E.	1859	1953	
Conly, Charles	Nov 6, 1886	Apr 20, 1965	
Conly, Bobby	Dec 23, 1935	Mar 9, 1962	
Conly, Clifford Ray	Aug 21, 1905	Jul 20, 1972	
Conly, Cullen Jefferson	Aug 23, 1899	Aug 4, 1957	

**Springhill Community Cemetery Listing, Bienville Parish, Louisiana (Cont'd)**

<b>Name</b>	<b>Born</b>	<b>Died</b>	<b>Comments</b>
Conly, Isaac Philip	Jan 24, 1888	Jan 21, 1959	
Conly, Maurice A	Apr 21, 1895	Oct 1, 1968	
Conly, Kenneth R	Dec 31, 1935	Sep 2, 1976	
Conly, William Best	Oct 21, 1879	Jun 9, 1965	
Conly, Nora Wilson	May 1, 1881	Jul 1, 1970	
Conly, William Bryant	Oct 4, 1897	Jan 12, 1975	
Conly, Ruel Dwight	Dec 11, 1901	Jan 24, 1971	
Conly, Virgil	Jan 8, 1915	Jan 20, 1967	
Conly, William Shelly	Feb 26, 1879	Sep 11, 1956	
Conly, Johnnie Jewel	Sep 19, 1903	1981	
Conly, Mattie C.		1980	Wife of Little John
Conly, Rex Duvel	May 16, 1924	Dec 19, 1964	
Conly, Roy Hill	Nov 6, 1902	1973	
Conly, Irene	May 14, 1911	Jun 1916	
Conly, Travis Thomas	Nov 19, 1880	Mar 19, 1951	
Conly, J. Winfield	Jan 26, 1883	Dec 18, 1927	
Conly, Edna Bailey	1887	1948	
Conly, John F.	Oct 2, 1858	Aug 14, 1916	
Conly, Cullie J.	Aug 23, 1889	Aug 4, 1951	
Conly, Osbourn	1920	1944	
Conly, June R.	1881	1944	
Conly, John F.	Apr 22, 1874	Feb 20, 1938	
Conly, Vander	Feb 28, 1889	Mar 12, 1925	
Conly, W. S. Dr.		Sep 11, 1956	77y6m15d
Conly, Hazeldine	Sep 15, 1912	May 9, 1913	
Conly, Jarrad Penn	May 27, 1886	Sep 29, 1947	
Cowart, Eddie Eric	Feb 8, 1886	Dec 21, 1970	
Cowart, Richard D.	Jul 6, 1947	Dec 20, 1972	
Cowart, Vesta	Mar 18, 1908	1981	
Cowart, Young A.	Jul 13, 1885	May 1, 1959	
Crawford, Velma	Aug 7, 1912	Aug 21, 1912	Dau Garland & Josie
Crawford, Selma	Aug 7, 1914	Sep 5, 1914	Dau Garland & Josie
Crawford, Dr. C. C.	Aug 12, 1879	Apr 24, 1922	
Crawford, Floyd C.	Dec 27, 1923	Jan 1958	
Crawford, Otto	Dec 19, 1887	Mar 12, 1904	
Crawford, Frederick Asberry	Nov 10, 1911	Oct 18, 1938	
Crawford, W. A.	Sep 27, 1866	Mar 17, 1898	
Crawford, Nancy Samantha	Aug 6, 1845	Nov 27, 1902	
Crawford, Infant son	Jul 19, 1912	Jul 24, 1913	Son of Carl
Crawford, G. B.MD	May 9, 1855	May 1, 1912	
Crawford, Emma Amelia	Jan 2, 1885	Feb 5, 1915	Wife of G. B.
Crawford, Sylvia Ruth	Jan 21, 1910	Sep 4, 1912	Dau of B.G.

### Springhill Community Cemetery Listing, Bienville Parish, Louisiana (Cont'd)

Name	Born	Died	Comments
Crawford, Robert D.	Jul 9, 1862	Aug 5, 1931	
Crawford, Verna Cornelia	Mar 17, 1907	Aug 9, 1917	Dau R. D. & M.J.
Crawford, Winnie C.	Dec 2, 1892	Mar 28, 1905	Dau R.D & M.J.
Crawford, Jim	Jul 9, 1910	Aug 5, 1927	Son of R.D. & M. J.
Crump, Cornelia Crawford	Feb 20, 1904	Apr 16, 1937	
Crumpton, David J.	Nov 13, 1877	Mar 19, 1931	
Crumpton, Minnie C.	Oct 10, 1884	Jul 24, 1959	
Crumpton, Perry	Mar 23, 1882	Nov 22, 1951	
Crumpton, John	Oct 13, 1884	Jan 27, 1956	
Crumpton, Mary D.	Oct 12, 1832	Jun 24, 1904	
Crumpton, Mary A. Carter	Aug 27, 1860	Nov 29, 1914	Wife of D. H.
Cummings, Debra Ann	Sep 13, 1951	Sep 26, 1951	Dau Wilfred
Davis, Lena Bridges	Dec 19, 1883	Nov 9, 1928	
Davison, J. F.	1880	1943	
Day, E. L.	Oct 11, 1879	Jul 9, 1953	
Deardoff, Frank	1915	1954	
Deerman, George W.	Jul 22, 1843	Feb 18, 1917	
Dehaan, Florence	May 16, 1890	Jul 16, 1932	
Dixon, Lavaina	Sep 15, 1903	Nov 11, 1904	
Dixon, Lelia	Apr 16, 1891	Aug 15, 1900	
Dixon, Mattie E.	Jan 8, 1896	Aug 26, 1902	
Dixon, William H.	Feb 27, 1865	Oct 23, 1918	
Dixon, Ella J.	Sep 25, 1875	Sep 5, 1961	Dau of Mary C. Leshe
Dixon, Russell Eugene	Jun 25, 1897	Nov 30, 1976	
Dixon, William Ernest	Sep 5, 1901	Jun 1, 1958	
Dumas, James E.	Dec 13, 1904	Jan 7, 1906	Son of J.T & M.M.
Due, Cora M.	Nov 22, 1890	Jul 31, 1972	Wife of Oscar Eugene
Due, Clarence Eugene	Oct 8, 1912	Jul 1979	
Emory, Janice	1907	Oct 29, 1939	
Elliott, James M.	Sep 6, 1875	Oct 14, 1875	Son of J.R. & Salina
Elliott, Salina	Dec 20, 1863	Sep 9, 1878	Wife of J. R.
Elliott, Marvin	Feb 14, 1910	Jul 13, 1925	Son of E.D & C.E.
Faggard, Alfred J	Aug 28, 1897	Aug 6, 1921	
Faggard, Belle	Feb 14, 1878	May 9, 1956	
Felts, Ernie H.	1891	1967	
Flemming, Dr. L.	Sep 26, 1834	Sep 26, 1876	
Forrest, Infant	Jan 25, 1893	Jan 26, 1893	Child of E.T & K.E
Franklin, D. D.	Sep 7, 1897	Aug 28, 1901	Son of E. N.
Franklin, C. E.	Feb 4, 1892	Sep 21, 1910	

**Springhill Community Cemetery Listing, Bienville Parish, Louisiana (Cont'd)**

<b>Name</b>	<b>Born</b>	<b>Died</b>	<b>Comments</b>
Franklin C. T.	Nov 5, 1895	Mar 29, 1912	
Franklin, J. F.	Nov 22, 1880	Aug 31, 1893	
Franklin, Edna	Mar 16, 1869	Aug 12, 1897	
Franklin, Nancy	1809	1897	
Franklin, Sabra Ann	Jul 29, 1850	Jan 19, 1929	
Franklin, Trigg	Dec 16, 1850	Apr 22, 1912	
Gamel, Marian I.	Apr 16, 1916	Mar 28, 1931	
Gamel, Lorena	Dec 11, 1889	Oct 19, 1956	
Gardner, Francis Ray, Pvt.	Mar 17, 1922	Feb 12, 1941	
Gardner, Fannie A.	Apr 16, 1875	Jun 13, 1904	
Gay, Talton	Jan 29, 1922	Apr 19, 1974	
Garrett, Glennie	Jan 30, 1915	Aug 12, 1949	Wife of Cortez
Graves, Milton N.	Feb 20, 1886	Mar 6, 1944	
Gray, Carl W.	Sep 20, 1931	Aug 28, 1947	
Gray, Jimmie W.	Sep 18, 1892	Oct 10, 1954	
Gearold, Minnie Ora Bailey	1908	1925	Wife of Hosea
Gearold, James Irie	Oct 5, 1914	Oct 5, 1914	
Gearold, Sadie Edna	Oct 23, 1891	Apr 28, 1915	
Gearold, James Ira	1882	1943	
Gearold, M. H.	Sep 2, 1858	Feb 18, 1936	
Gearold, Grace	Nov 4, 1910	Sep 8, 1912	
Gearold, Lester H.	Apr 22, 1889	Nov 28, 1911	
Gearold, Hamilton	Mar 1, 1852	May 18, 1923	
Gearold, Cynthia A.	Feb 14, 1855	Oct 11, 1922	
Gearold, Janice	1907	1939	
Gearold, Willie E.	Jul 4, 1867	Jul 18, 1878	Sis of J. D.
Gearold, Robert W.	Aug 28, 1824	Oct 17, 1898	
Giddens, Jerry	Aug 1, 1953	1980	
Giddens, Ethel Birta	Jan 26, 1897	1980	
Giddens, N. W.	Sep 11, 1864	Oct 17, 1898	
Giddens, Louella	Apr 7, 1875	Jun 22, 1955	
Giddens, Jacob M.	Apr 9, 1834	Feb 22, 1915	
Giddens, Prudence A.	May 14, 1840	Apr 17, 1907	
Giddens, William Doyle	Jul 6, 1904	Feb 2, 1955	
Giddens,	Jan 21, 1905	Apr 1, 1907	Dau of C.G & M.C.
Giddens, Emma P.	Sep 19, 1871	Aug 3, 1877	Dau of J.M. & P.A.
Giddens, Janette	May 12, 1935	May 22, 1935	
Giddens, Infant	Sep 28, 1897	Sep 28, 1897	Child of H.J & M.L.
Giddens, Infant	Jan 12, 1892	Jan 12, 1892	Child of H.J. & M. L.
Giddens, Gary Brice	Jan 6, 1900	Jun 8, 1901	
Giddens, Florence	Dec 31, 1867	May 17, 1944	

**Springhill Community Cemetery Listing, Bienville Parish, Louisiana (Cont'd)**

<b>Name</b>	<b>Born</b>	<b>Died</b>	<b>Comments</b>
Giddens, William O.	Aug 14, 1884	Sep 3, 1888	
Giddens, Laura	1889	1934	
Giddens, Infant	May 4, 1886	May 4, 1886	Child of C.C & N.C
Giddens, Ellora	Nov 8, 1917	Dec 18, 1919	Dau of Earold & Avie
Giddens, Chaffra C.	Jan 16, 1902	Apr 25, 1950	
Giddens, William Hardy	Jul 29, 1864	Jan 3, 1878	Son of J.M & P. A.
Giddens, Sank	1880	1952	
Giddens, Cory Brice	Jan 6, 1900	Jun 23, 1901	Son of Sank
Giddens, Della	Oct 7, 1890	Jan 29, 1929	Wife of W.C.
Giddens, Jessie Elmo	Jul 12, 1911	Sep 16, 1912	
Giddens, Lillie Truxie	Oct 17, 1913	Nov 5, 1917	
Giddens, Frank H.	Jan 3, 1917	Mar 4, 1948	Pvt 22 Inf WWII
Giddens, Sarah	Apr 18, 1859	Sep 30, 1937	Wife of J. J.
Giddens, Governor H	Apr 8, 1898	Dec 19, 1898	Son of J.J. & Sarah
Gibson, Lucy Idonnie	Jan 23, 1886	Nov 20, 1977	
Gibson, Scott	Nov 19, 1878	1980	
Golson, Susan Ellen Lilly Viola		Nov 28, 1886	Wife of John
Grant, Hettie Alabama	Oct 23, 1882	Aug 14, 1887	
Grant, Sallie T.	Apr 8, 1875	May 17, 1914	
Green, Jessie Monroe	Oct 14, 1887	Oct 2, 1889	Son of W. D.
Green, Ollie C. Scrogin	Apr 10, 1872	Mar 4, 1937	Wife of J. M.
Green, William Columbus	Dec 6, 1896	Apr 20, 1916	Son of J. M.
Green, Charlie D.	Sep 30, 1901	Nov 28, 1952	
Green, Mary M. C.	Mar 1, 1906	Apr 16, 1906	Dau of W.L. & S. Z
Green, Delva	Jun 25, 1932	Jun 25, 1932	
Green, J. T.	1859	1935	
Green, Emma	1868	1945	
Green, Babe	Oct 1, 1888	Jul 21, 1890	
Green, Infant	Aug 8, 1901	Aug 8, 1901	Son of T.A & L. E.
Green, Infant	Nov 3, 1903	Nov 3, 1903	Son of T.A. & L.E.
Green, Nancy	Oct 1, 1808	Jul 1, 1888	
Green, Arlena Bell	Oct 2, 1876	Jan 20, 1918	
Green, Henry Collin	Apr 20, 1871	Mar 17, 1944	
Green, Minerva	Oct 14, 1896	Apr 24, 1936	
Green, Duxie	Nov 25, 1894	Sep 7, 1940	
Greer, Lou Adell	Jun 4, 1910	Jan 15, 1959	
Hall, Duane	May 22, 1919	Apr 5, 1926	Son of W.J. & Z.M
Hall, M. B.	Dec 10, 1891	Nov 15, 1896	
Hall, Eugene and Estelle	No dates on Two stones		
Hall, Mrs. M. M.	Sep 16, 1813	Aug 21, 1891	
Hall, William Johnnie	Feb 13, 1890	Jul 12, 1922	

## Springhill Community Cemetery Listing, Bienville Parish, Louisiana (Cont'd)

Name	Born	Died	Comments
Hall, James I.	Aug 6, 1867	Apr 10, 1908	
Hall, William B.	1870	1942	
Hall, Conroe	May 28, 1914	Mar 17, 1932	
Hall, Helen Dale	Nov 1, 1924	Sep 6, 1943	
Hall, Dempsey H.	Jun 4, 1876	Apr 3, 1949	
Hall, H. J.	Apr 28, 1839	Dec 18, 1915	
Hall, Elizabeth	Dec 2, 1835	Nov 2, 1905	Wife of H. J.
Hall, William Claude	Nov 17, 1901	Oct 15, 1907	Son of W.B & A.E.
Hall, J. D.	June 3, 1856	Dec 2, 1882	
Hall, Louie	Jun 16, 1882	Mar 27, 1918	
Hall, Edward Warren	April 10, 1863	Jun 7, 1929	
Hall, Mattie S.	Jul 21, 1873	Mar 12, 1932	
Hall, Drue	1905	1968	
Hall, Henry Grady	Feb 18, 1896	Oct 1967	
Hall, Lemma	1893	1972	
Hall, Mabel	Oct 3, 1901	Sep 12, 1980	
Hall, Rena	1894	1973	
Hand, H. G.	Jan 14, 1882	Mar 3, 1912	
Hand, Little Jewel	Aug 7, 1903	Sep 10, 1904	Dau of H.G. & Nita
Hand, Infant	May 30, 1877	Aug 6, 1877	Child of H.J. & M. A
Hand, H. G.	Aug 2, 1854	Oct 6, 1896	
Hand, Dole	Jun 17, 1887	Jun 9, 1895	
Hasty, Leroy	Feb 1, 1904	May 25, 1905	Son of J.D & T.A.
Hasty, Child	1906	1906	Son of J.D. & T.A
Harrass, Garnia H.	Jul 26, 1896	Sep 26, 1897	
Hatton, Robert	Feb 13, 1878	Jun 11, 1853	
Hausey, A. J.	Sep 26, 1886	Jan 13, 1916	
Hausey, John W.	Jun 10, 1849	Jul 29, 1929	
Hausey, Ruth V.	Apr 15, 1862	Feb 5, 1949	
Hayes, Howell A.	Feb 3, 1879	May 16, 1947	
Hayes, Vivian Hortense	Jun 21, 1897	Oct 24, 1901	Dau J.T. & E.M.
Hayes, J. M.	Oct 1, 1848	Aug 15, 1895	
Hayes, J. T.	Jul 27, 1873	Sep 13, 1931	
Hayes, Ella M. Sledge	Jun 10, 1879	Aug 17, 1911	Wife of J. T
Hayes, Infant Dau	Aug 13, 1911	Aug 13, 1911	Dau J. T. & E. M
Hayes, Mary Hill	Mar 13, 1870	Nov 19, 1923	
Hayes, Mary E.	Dec 22, 1892	Oct 10, 1941	
Haynes, Helen Macne	May	Mar 10	Only readable dates
Hayes, Charles F.	Apr 16, 1855	Jun 5, 1940	
Hays, Infant Son	Sep 10, 1936	Sep 10, 1936	Son of R. S.
Hicks, W. J.	Sep 25, 1890	Mar 11, 1958	

To be continued...



Star Cemetery, Caddo Parish, Shreveport, Louisiana

ID	Surname	First Name	Middle Name	Title	Birth Date	Death Date	Age
1497	Selvage	Francis			1876	1947	
324	Session	Liza	Jane		--- Feb 1843	06 Jan 1906	
293	Seymore	Lawrence			20 Jan 1890	10 Feb 1919	
294	Seymour	Frances			04 Jul 1860	09 Jul 1930	
719	Sharp	Katie			30 Jun 1872	03 Sep 1921	
172	Shaw	Agnes				--- Jul 1904	65 Yrs
868	Shedrick	George	B.		07 Mar 1887	11 Feb 1954	67 Yrs
1153	Shedrick	Nathaniel			08 Jan 1885	14 Sep 1911	
877	Shelton	W.	M.		16 Oct 1899	23 Dec 1955	56 Yrs
891	Shelton	Ace				--- Jan 1903	55 Yrs
899	Shelton	Willie				? Oct 1904	
142	Sherman	Rosa			25 Dec 1878	27 Jan 1939	
659	Sherman	George			11 Dec 1840	22 Jul 1914	
564	Shields	Robert			1860	1944	
1504	Shields	Lucenda			1876	1939	
1253	Shields	Rosanna				06 July 1915	
30	Shivers	Sam				31 Mar 1929	61 Yrs
863	Sholars	Clarence				02 Apr 1907	
510	Simmons	Edd	Johnnie Lee		03 Jan 1938	21 Mar 1953	15 Yrs
581	Simmons	Lucinda		(Mrs.)	1852	03 Apr 1909	
1500	Simmons	Lee					
268	Simms	J.	J.	Rev.	04 Jun 1852	(Left Blank)	
1499	Simpson	Blackman				20 Aug 1960	
80	Sims	Alice			1878	10 Feb 1943	75 Yrs
270	Sims	John	Wesley			02 Dec 1908	52 Yrs
312	Sims	Charlotte			18 Jun 1869	12 Feb 1923	
1498	Sims	Rayne	J.		1886	1937	
1292	Sims	Lillie	Pearl			23 Jan 1919	16 Yrs
488	Skinner	Nathaniel			03 Aug 1897	25 Feb 1951	
1063	Slater	Albert	Harrison			18 Jul 1939	
400	Slaughter	Carrie				15 Jan 1941	78 Yrs

Star Cemetery, Caddo Parish Louisiana  
 by Mrs. Isabelle Woods  
 [Continued from The Genie, Vol. 36, Second Quarter 2002, p.140]

Star Cemetery, Caddo Parish, Shreveport, Louisiana

ID	Surname	First Name	Middle Name	Title	Birth Date	Death Date	Age
1505	Slebbett	Annie				08 Aug 1892	58 Yrs
1032	Sloan	Mollie			1874	13 Oct 1914	
1331	Sloan	Carrie				11 Mar 1947	
99	Small	Lizzie	Davis		21 Nov 1899	28 Feb 1948	49 Yrs
770	Small	Elizabeth				22 Jul 1923	30? Yrs
1223	Small	Fannie			15 Mar 1875	07 Jun 1914	
46	Smedler	Albert			14 Oct 1890	09 Jan 1915	
1348	Smedler *	Julia			1863	1943	
1349	Smedler *	C.	B.		1888	1943	
49	Smelder	Hermon	J.		08 May 1907	07 Jul 1923	
50	Smelder	Marion	Josephine		02 Apr 1909	26 Oct 1922	
144	Smith	Sarah			12 Mar 1881	12 Mar 1931	
348	Smith	Belle			1875	1938	
506	Smith	Thompson	J.		15 Jan 1888	26 Aug 1889	
714	Smith	Josephine				11 Jul 1921	
58	Smith	Pearl			1881	1930	
247	Smith	Catherine			12 Oct 1868	11 Aug 1949	
301	Smith	Hattie			1900	1949	48 yrs
317	Smith	Ophelia		(Mrs.)	1873	1952	
318	Smith	James			1865	1948	
319	Smith	Willard	H.		18 Sep 1892	25 May 1923	30 yrs
326	Smith	Hattie	Mae		10 May 1900	18 Aug 1943	43 Yrs
700	Smith	Belle				20 May 1926	
831	Smith	Annie				09 Jun 1922	41 Yrs
1068	Smith	R.	C.		24 Feb 1919	05 Dec 1978	
1083	Smith	George	J. A. R.			10 Dec 1896	23 Yrs
1122	Smith	Ella				21 Jun 1926	
1169	Smith	Mary				28 Dec 1911	56 Yrs
1255	Smith	Laura	A.			20 Dec 1916?	24 Yrs
1363	Smith	Hattie	Garner		04 Jun 1885	26 Jul 1918	
1530	Smith	Eddie	L.			1955	38 Yrs.



THE LATE C. B. SMEDLER

"CARD OF THANKS"

"We wish to express our sincere appreciation...to friends who were so kind...during the death of our mother and grandmother, MRS. JULIA SMEDLER.

"...Also assisting (and other) ministers...Rev. M. M. Flynn, Rev. A. E. Liles, Rev. A. M. Saulsberry, Rev. E. C. West, Rev. L. H. Houghton, Rev. H. W. Allen. Others...on the program were: Mrs. A. B. Palmer, Mrs. B. C. Williams, Mrs. Lou Owens, Mrs. C. Monroe.

"...Thanking you again, we are:  
"Sincerely,

"Mrs. Mariah Williams, daughter, city; Mr. C. B. Smedler, son, Oakland, Calif.; Mr. J. H. Smedler, son, Kansas City, Mo.; Rev. W. D. Smedler, son, Oakland, Calif. Grandchildren are: Vera Mae Smedler, Kansas City, Mo.; Julia Mae Turner, William D. Smedler, U. S. Army, overseas; Ruth Smedler, Kansas City, Mo.; LaVerne Smedler, student of Southern university; Garrison Williams, Jefferson Barracks, Mo.; Ida Mae Porter,... (and) Mildred Porter, Canton, Ohio. Grandchildren of city are: Mrs. Booker Harrison, Mrs. Florence Smedler, Mrs. Jewell Davis, Mrs. Jessie Lee Turner, Mrs. Estella Smedler, daughter-in-law, Sunshine Williams.

"Very close friends, the same as relatives, are: Mrs. Edith Haywood, Mrs. Susie Kendall, Mrs. Carrie Fisher, and daughter; Mrs. Eunice Wilson, Mrs. Chatman, Mrs. Marie Taylor, and the Chester Family, and others that space will not permit."

Source: *The Shreveport Sun*, Shreveport, Louisiana, page 8, column 5, (see also column 7 regarding C. B. Smedler), dated July 17, 1943; microfilm Roll No. 498, Archives Room, Southern University Library, Shreveport Campus, Shreveport, Louisiana.

"MEMBER OF WELL KNOWN  
FAMILY PASSES"

"Miss Alberta Smedler, a life long resident of this city, died Tuesday, May 25. She resided with her mother, Mrs. Julia Smedler, 1032 Baker St.<sup>1</sup> Besides her mother, she is survived by two daughters, Vera and Julia Mae; three brothers, C. B. Smedler, Oakland, California; and John H. Smedler, Kansas City, Mo., and Rev. Willie D. Smedler of this city, and one sister, Mrs. Mamie Williams, both of Shreveport. Funeral service will be held Monday, May 31, after the arrival of out-of-town relatives. Interment will be in the Star cemetery under the direction of Benevolent Funeral Parlors. Rev. H. W. Allen will officiate."

Source: *The Shreveport Sun*, Shreveport, Louisiana, page 8, column 6, dated May 29, 1943; microfilm Roll No. 498, Archives Room, Southern University Library, Shreveport Cam-

"BELOVED WOMAN DIES A  
HAUGHTON"

"Mrs. Mary Ealy, a beloved resident of Bossier parish, died in her home near Filmore, where her husband for many years had served as sexton for the Filmore cemetery. Funeral service were held Monday evening from the Filmore Methodist church. She leaves 2 daughters including Mrs. Odessa Crooks of this city, 4 sons, 1 sister, Mrs. Smedler in Baker street, and a host of relatives. Rev. Smith, pastor, officiated. Funeral was directed by Benevolent Funeral Parlors."

Source: *The Shreveport Sun*, page 8, column 1, dated June 19, 1943; microfilm Roll 498, Archives Room, Southern University Library, Shreveport Campus, Shreveport, Louisiana.

OBITUARIES AND/OR  
"CARDS OF THANKS"  
RELATING TO THE  
SMEDLER FAMILY

"3 Members of Family Die Within  
41 Days"

"Mrs. Julia Smedler, pioneer resident of Shreveport, mother of Rev. Willie Smedler who left this city one month ago to make his home in California; also mother of the late Joe Smedler who was killed about 12 years ago, died suddenly while on the front porch of her home, 1031 Baker street, where she had resided for a long period of time, only a short time after the death of her daughter, Alberta Smedler, and also a sister, Mrs. Mary Ealy of Haughton, La., all passing within forty-one days. She leaves one daughter, of this city, 2 sons of Kansas City and Los Angeles, Calif., also a host of grandchildren and other relatives.

"Funeral services will be held after the arrival of relatives, with interment in Star cemetery, with pastor Henry W. Allen officiating. Benevolent Funeral Parlors in charge. Call 6805 for funeral arrangements after Sunday morning."

Source: *The Shreveport Sun*, Shreveport, Louisiana, page 2, column 3, dated July 10, 1943; microfilm Roll No. 498, Archives Room, Southern University Library, Shreveport Campus, Shreveport, Louisiana.

"FOURTH MEMBER OF WELL  
KNOWN FAMILY DIES"

"Mr. Columbus B. Smedler,<sup>2</sup> 55, a native of this city, who has resided in Chicago and California for the past 40 years died in Oakland, Calif., Monday, Oct. 18<sup>3</sup>. During this past six months a sister, aunt, and mother have died. Funeral services were held Wednesday, Oct. 27, from Avenue Baptist church, with Rev. M. M. Flynn officiating at the absence of Pastor Allen. Interment was in Star cemetery under the direction of the Benevolent Funeral Parlors. Surviving, aside from his wife who accompanied the remains here along with her sister, are 2 brothers, a sister, and other relatives."

Sources: *The Shreveport Sun*, Shreveport, Louisiana, page 8, column 7, dated July 17, 1943; and page 8, column 5, dated October 30, 1943; microfilm Roll No. 498, Archives Room, Southern University Library, Shreveport Campus, Shreveport, Louisiana.

NOTES:

<sup>1</sup>Residential address of Mrs. Julia Smedler differs in two newspaper accounts: 1032 vs. 1031 Baker St.

<sup>2</sup>Columbus Smedler (aka C. B. Smedler) was proprietor of the Union Cafe & Liquor Store on 125th Street in Oakland, California.

<sup>3</sup>Date of death must be verified with death certificate. Death date published in two newspaper accounts differ by one day.

"WELL KNOWN FORMER  
SHREVEPORTER LAID TO REST"

"Mr. C. B. Smedler, well known business man of Oakland, Calif., and former Shreveporter, who died at his home in Oakland Oct. 19, 1943, was laid to rest here Oct. 27. Funeral services were held from the Avenue Baptist church, Rev. H. W. Allen pastor. The remains was accompanied here by Mrs. C. B. Smedler, wife of the deceased; Rev. W. D. Smedler, brother; Mrs. Mabel Smedler, sister-in-law, and Mrs. Lacy Hollis of Ft. Worth, Texas, sister-in-law.

"Mr. Smedler was born in Bellevue, La., in 1888. In 1897, the Smedler family moved to Shreveport. Mr. Smedler was one among the first students to attend the 13th Dist. Normal & Collegiate Inst. of which the Rev. Wm. Hicks was principal. In 1910, Mr. C. B. Smedler moved to Kansas City, Mo., where he stayed for a number of years. Later, he moved to Duluth, Minn. In 1931, he moved to Oakland, Calif., and was married to Miss Carrie Belle Paley in 1937. He was loved and respected by both colored and white, and will surely be sadly missed by all."

"CARD OF THANKS"

"We...would like to take this method of expressing our thanks to our many friends...for their kind words of sympathy...during the death of our brother, C. B. SMEDLER, of Oakland, California.

"...We...give thanks to ...participants on the program. They are: Revs. H. Price, T. J. Bryant, M. M. Flynn; Mrs. Vivian Howard, Mrs. E. S. Redwine, Miss Odessa Veal; Messrs. Ed Brooks, Albert Chester, W. Leviston. (Signed), the Smedler family:

"Mrs. C. B. Smedler, wife; Mrs. Maria Williams, sister; Mr. John Smedler, Kansas City, Mo.; Rev. W. D. Smedler, brothers; Mesdames Joe Smedler, Mabel Smedler, Ollie Smedler, Kansas City, Mo.; sisters-in-law; Mesdames Hazel Harrison, Jewel Davis, Florence Smedler, Josie Lee Larner; Mrs. Laverne Smedler, Southern university; Ruth Smedler, Ida Mae Todd, Canton, Ohio; Vera Mae Smedler, Kansas City, Mo.; Julia Mae Turner, Sunshine Williams; Dorothy Williams; Mrs. Mildred Lucas, Melville, Ala., nieces.

"Messrs. Garrison Williams, Jr., Columbus Williams, U. S. Army; William D. Smedler, Jr., U. S. armed forces overseas; Urett Porter, Canton, Ohio, nephews; Mrs. Lacy Hollins, sister of Mrs. C. B. Smedler, Ft. Worth, Texas; Mrs. Minevia Murphy, New Orleans, sister-in-law.

"Mr. Daniel Anderson, Alexandria, La., Miss Odessa Crooks, cousins; Close friends...: Mrs. Edith Hayward, Mr. and Mrs. Sam Howard; Mrs. Nannie (?) Hamilton; Mrs. Eunice Wilson; Mrs. Susie Kendall; Rev. John Scott; Mrs. Carrie Fisher; Mr. and Mrs. Fletcher Givens; Mr. and Mrs. Chas. A. Napoleon; Mr. John R. Morgan and many others space will not permit mentioning.

"Pallbearers: Messrs. Frank Jackson, Ike Jackson, Isaac Jackson, Clarence Thomas, Ed Brooks, J. M. Burns."

Source: *The Shreveport Sun*, Shreveport, Louisiana, page 3, columns 3 and 5, dated November 6, 1943; microfilm Roll No. 498, Archives Room, Southern University Library, Shreveport Campus, Shreveport, Louisiana.

Star Cemetery, Caddo Parish, Shreveport, Louisiana

THE GENIE FOURTH QUARTER 2002

189

ID	Surname	First Name	Middle Name	Title	Birth Date	Death Date	Age
1531	Smith	Eddie	Lee				
624	Smithe	Addline				02 May 1942	63 Yrs
128	Sneed	Dollie		Mrs.		15 May 1954	
1048	Spawn	Oscar				05 Feb 1936?	48 Yrs
876	Spears	Lou				29 Jul 1929	
444	Spencer	Margaret	A. Player		04 May 1913	11 Sep 1979	
454	Spencer	Margaret	Player		04 May 1913	11 Sep 1979	
634	Spikes	R.	D.	Rev.		08 May 1948	
890	Stand						
556	Stanley	?				24 Feb 1949	
1502	Stanley	Carrie			25 Dec 1873	25 Sep 1926	
179	Starks	Georga				17 Sep 1899	38 Yrs
1177	Starks	Mattie			05 Jul 1877	07 Jul 1912	
1322	Steen	Henry				29 Jun 1922	57 Yrs
22	Stephens	Daisy			09 May 1900	06 Jul 1944	
1086	Stephens	Mary	D.		02 Jul 1906	27 Jun 1926	
204	Stephens*	Ben	J.		1878	1936	(Mrs B R Doneghy,dtr)
958	Stephenson	Louis			1880	1920	40 Yrs
1023	Sterrett	Annie				08 Aug 1892	58 Yrs
949	Stevens	Geo.				11 Jan 1912	65 Yrs
231	Stevenson	Cleo			1912	1944	
514	Steward	Almira	Chew		19 Jan 1875	26 Feb 1922	
1124	Steward	Wesley				10 Aug 1909	35 Yrs
138	Stewart	Albert	W.		30 Sep 1853	07 Dec 1910	
139	Stewart	Cora	Louise		1855	1942	
386	Stewart	Mary				04 Jan 1919	65 Yrs
387	Stewart	Houston				23 Feb 1906	9 Yrs 5 Mos 12 Days
388	Stewart	Frank				20 June 1918	70 Yrs
735	Stewart	Shelly			20 Mar 1891	01 Nov 1923	
40	Stewart	Elizabeth				04 May 1909	70 Yrs
42	Stewart	James			10 May 1829	13 Jan 1904	

"Local Wedding Brilliant Affair at St. Paul Last Thursday Evening"

"Stephens-Doneghy Nuptials"

"...The most brilliant social event of the season was the wedding of one of Shreveport's loveliest maids, Miss Bennie Ruth Stephens and Dr. Charles J. Doneghy of Indiana Harbor, Indiana, which was solemnized at the St. Paul M. E. church, on the afternoon of June 26th, 1930....

"...Mrs. Mary Roberts of Chicago, the bride's grandmother, wore a tan crepe romaine. Mrs. C. T. Brown of Chicago, aunt... wore a light green crepe romaine...Dr. Castromer Ewell...Mr. Bernard Adams...Mr. Raleigh Brown...and Dr. Henry Clark... Dr. Theophil Wells... and Mr., J. O. Whaley... groomsmen....

"...Miss Anetta Williams...Miss Mary Lou, Lois Stewman,...Miss Woodie Dell Collins, Katie Pegues and Miss Dorothy Williams were brides maids....The matron of honor, Mrs. S. E. Williams.... The flower girls...Miss Addie Sims...Miss Effie Marie Simpkins...Master Duke Simpkins, Jr., the ring bearer...his best man, Mr. S. E. Williams...ceremony was performed by Rev. Dr. Calvin S. Stanley, pastor of St. Paul M. E. church.

"...Miss Stephens is the daughter of B. J. Stephens,\* a graduate of Howard University, a member of the Alpha Kappa Alpha sorority and....

"Dr. Doneghy is a graduate of Howard University, a member of the Omega Phi Phi fraternity, and has a lucrative practice in his home city...They left immediately after the reception, motoring to 2102 Broadway, Indiana Harbor, Indiana, their future home."

Source: *The Shreveport Sun*, Shreveport, Louisiana, page 5, column 4 (photos), dated June 14, 1930; and page 3, columns 1 and 2, dated July 5, 1930; microfilm Roll No. 494, Archives Room, Southern University Library, Shreveport Campus, Shreveport, Louisiana.

Star Cemetery, Caddo Parish, Shreveport, Louisiana

THE GENIE FOURTH QUARTER 2002

190

ID	Surname	First Name	Middle Name	Title	Birth Date	Death Date	Age
1092	Stewart	Eugenia			01 Sep 1884	10 Feb 1940	
335	Stewman	Fred		(Jr.)	01 Jan 1901	20 Oct 1969	
337	Stewman	Fred		(Sr.)	01 Jan 1871	14 Dec 1925	
1234	Stinson	Addie			21 Nov 1887	10 Jun 1939	
1506	Stith	H.		Mother			
394	Stokes	Milton				28 May 1904	33 Yrs
1130	Stokes	Mose			--- Mar 1876	--- Sep 1911	
391	Strong	Robert				23 Jan 1924	37 Yrs
296	Sumpter	Mattie	Pearl			09 Aug 1910	18 Yrs
297	Sumpter	J.	C.			10 Sep 1904	51 Yrs
298	Sumpter	Maggie					
1064	Sumpter	A.	T.		1862	1926	
1250	Swan	W.	M.			21 Sep 1915	73 Yrs
1251	Swan	Hattie				16 Feb 1927?	69 Yrs
1252	Swann	Mathew			1886	1942	
572	Swans	Ella	V.		19 Apr 1905	05 Aug 1958	53 Yrs
1510	Tatum	Jimmie				1959	
819	Taylar	Jane				07 Feb 1938	65 yrs
366	Taylor	Pollie				13 Aug 1910	47 Yrs
461	Taylor	Fay	E.		14 May 1924	29 Aug 1924	
473	Taylor	Edwin	A.		1900	1950	
757	Taylor	Bettie			08 Aug 1891	01 Oct 1922	
758	Taylor	A.	J.			03 Mar 1921	60 Yrs
944	Taylor	Sarah			17 Aug 1871	02 Jul 1951	80 Yrs
266	Taylor	Lizzie			1898	08 Aug 1949	
302	Taylor	George			04 Apr 1881	09 Jul 1948	
832	Taylor	Ruby	May			11 May 1923	22 Yrs
1128	Taylor	Bob			14 Sep 1884	23 Nov 1951	
1267	Taylor	Jonas	C.		25 Feb 1892	05 Aug 1945	
1320	Taylor	Lila				31 Dec 1921	88 Yrs
121	Tea	Edward				24 Dec 1939	61 Yrs

(Additional Decedent)

"WELL KNOWN CITIZEN  
PASSES"

"Mrs. Victoria Taylor, aged mother of Mrs. Lena Smith, better known as Mother Lena, of this city, died on April 20 in her home in Olive street. Funeral services were held from Baptist Temple church on May 4th, with Rev. Giles Stills officiating. Interment was in the Star cemetery under the direction of J. S. Williams & Son funeral home. She is survived by a host of relatives and friends."

Source: *The Shreveport Sun*, Shreveport, Louisiana, page 8, column 5, dated May 8, 1943; microfilm Roll No. 498, Archives Room, Southern University Library, Shreveport Campus, Shreveport, Louisiana.

Star Cemetery, Caddo Parish, Shreveport, Louisiana

THE GENIE FOURTH QUARTER 2002

191

ID	Surname	First Name	Middle Name	Title	Birth Date	Death Date	Age
92	Teague	Elouise			06 Dec 1872	09 Apr 1936	
541	Teague	Fred	D.		30 Apr 1929	03 Jun 1956	
926	Terry	Clara				01 Nov 1900	19 Yrs
1509	Terry	Elizabeth	Hill				
396	Theus	Catherine			---- Jul 1905	01 Jul 1958	53 Yrs
237	Thomas	Rosa				07 Dec 1947	52 Yrs
339	Thomas	Mary					
749	Thomas	Sallie		(Mrs.)		04 Dec 1923	
882	Thomas	Willie				30 Sep 1925	
924	Thomas	Willie	Mae		05 Feb 1911	18 Nov 1941	
7	Thomas	Julia				04 Sep 1934	28 Yrs
41	Thomas	Lue			10 Aug 1883	15 Feb 1952	
84	Thomas	Norman				12 Mar 1926	
85	Thomas	Ellen	Cook		15 Jun 1867	16 Mar 1972	
86	Thomas	Armstead				18 Feb 1919	54 Yrs
87	Thomas	Isabella	M.		10 Dec 1899	06 Jan 1912	
88	Thomas	Jonathan	R.		15 Jan 1896	29 Jul 1960	
811	Thomas	Minnie			03 Dec 1896	12 Nov 1926	
833	Thomas	Tennessee				01 Sep 1923	50 Yrs
1507	Thomas	Letty					
1511	Thomas	Leola				1955	52 Yrs
1087	Thomas	Lewis				26 Feb 1935	
1109	Thomas	William				11 Nov 1910	36 Yrs
1158	Thomas	Clara			29 Aug 1885	07 Mar 1912	
1199	Thomas	Elmira			1828	02 Jun 1912	
1285	Thomas	Lucille				17 Oct 1917	65 Yrs
1314	Thomas	Rosa	Ann		21 Jan 1914	21 Nov 1944	
1330	Thomas	Sidney				17 Dec 1921	38 Yrs
1388	Thomas	William	F.			20 Jul 1942	24 Yrs
148	Thompson	Rob.	E.			31 Jul 1907	
184	Thompson	Ben			04 Jun 1887	04 Mar 1910	23 Yrs

Star Cemetery, Caddo Parish, Shreveport, Louisiana

THE GENIE FOURTH QUARTER 2002 192

ID	Surname	First Name	Middle Name	Title	Birth Date	Death Date	Age
494	Thompson	Minerva			13 May 1856	21 Feb 1901	
741	Thompson	Ida				10 Sep 1930	
644	Thompson	Amanda			01 Apr 1867	18 Dec 1945	
1297	Tidwell	Irma			08 May 1908	09 Dec 1944	36 Yrs
152	Tiggs	William	B.		15 Mar 1863	26 Mar 1913	
939	Tiggue	Lucy	Booker			28 Feb 1946	
36	Tillman	Mary				19 Nov 1911	58 Yrs
35	Tillmon	Johnnie	T.		02 June 1884	23 Jan 1906	
1508	Tisby	Helen	Marie		1956	1956	
1277	Tisby	Willie	A.		06 Aug 1873	09 Nov 1917	
822	Tomkies	Jessie				05 Jun 1935	
398	Townsend	Rena			25 Dec 1881	17 Mar 1959	77 Yrs
390	Turner	Edith			27 Mar 1852	17 Mar 1907	Nearly 55 yrs
522	Turner	Christopher			1892	1955	
553	Turner	Ed			03 Nov 1892	09 Feb 1949	
925	Turner	Gain				12 Mar 1907	69 Yrs
987	Turner	Almine			1832	04 Sep 1898	66 Yrs
1273	Turner	Eliza				01 Nov 1918	
762	Tylor	Fannie				17 Aug 19--	60 Yrs
77	Underwood	Mabel			28 May 1901	30 Jul 1947	
614	Vaults	Mamie			03 Dec 1898	12 Dec 1941	
1114	Ville	J.	P.		--- Mar 1871	--- Feb 1918	
1279	Vinson	Martha				19 Apr 1918	70 Yrs
502	Waddy	Annie			1868	1931	
1522	Walier	Rouch			1888	1948	
464	Walker	Johnny			24 Jul 1929	25 Oct 1957	
1008	Walker	C.	H.	Rev.	16 Dec 1888	04 Jan 1948	
45	Walker	Dora				06 Jan 1919	81 Yrs
660	Walker	Georgia					2 Yrs
837	Walker	Lula				20 Mar 1923	
1069	Walker	Julia				28 Jan 1925	90 Yrs

"LOCAL MAN SUCCUMBS"

"Mr. Barney (Clay) Tiggue, 55, husband of Mrs. (Lucy) V. Tiggue, local high school teacher, died (August 27, 1943) in a local sanitarium after a brief illness. Besides his wife, he is survived by a sister (Mrs. Lucy Davis), a resident of Mississippi. Final rites were held Monday at (?) o'clock from the Christ Temple church in Jordan street. Rev. Johnson, pastor, and J. C. Anderson were officiating ministers. Interment was in the family plot in Star cemetery under the direction of Benevolent Funeral Parlors."

Source: *The Shreveport Sun*, page 8, columns 1 and 3, dated September 4, 1943; microfilm Roll No. 498, Archives Room, Southern University Library, Shreveport Campus, Shreveport, Louisiana.

"MILAM ST. RESIDENT PASSES"

"Mrs. Georgia Wadley passed away Oct. 20, at 1415 Milam street at the home of a friend. Funeral rites will be held Sunday at 2 o'clock from the chapel of J. S. Williams & Son Funeral Home, with Rev. Harris officiating. Interment in Star cemetery. She is survived by distant relatives and a host of friends. Arrangements by J. S. Williams & Son Funeral Home."

Source: *The Shreveport Sun*, Shreveport, Louisiana, page 8, column 2, dated October 23, 1943; microfilm Roll No. 498, Archives Room, Southern University Library, Shreveport Campus, Shreveport, Louisiana.

A  
D  
D  
I  
T  
I  
O  
N  
A  
L  
  
D  
E  
C  
E  
D  
E  
N  
T  
S

Star Cemetery, Caddo Parish, Shreveport, Louisiana

ID	Surname	First Name	Middle Name	Title	Birth Date	Death Date	Age
1224	Walker	Mary				19 May 1914	40 Yrs
215	Wallace	Rebecca				04 Jun 1948	55 Yrs
543	Wallace	M.	Adiline		1884	1900	
281	Walls	William			1868	1950	
861	Walls	Thomas	P.			16 Jul 1906	28 Yrs
595	Walters	Daisy	Lee		26 Feb 1913	21 Aug 1941	
635	Walters	Virginia			15 Jun 1843	10 Apr 1913	
1033	Wamsley					21 Mar 1904	40 Yrs
436	Ward *	Sam			10 Jan 1904	21 Sep 1943	39 Yrs
292	Ware	Australia			14 Feb 1881	25 Jan 1914	
1090	Ware	Ben			15 Nov 1871	28 Nov 1909	
157	Warner	Clarinda			02 Jul 1870	23 Jul 1907	
816	Warpool	Woodly				09 Feb 1924	53 yrs
704	Warren	Goldie				06 May 1945	40 Yrs
596	Warren	Alvin			04 Jun 1889	08 May 1941	
1220	Warren	Lizzie			1868	21 Jan 1915	
205	Washington	David				12 Oct 1929	31 Yrs
214	Washington	Daisy			--- Jul 1899	21 Nov 1947	
452	Washington	Fannie	Kendall		02 Nov 1880	21 Nov 1955	
720	Washington	George				29 Jan 1923	84 Yrs
680	Washington	Rosina				17 Jul 1922	98 Yrs
686	Washington	John			31 May 1871	10 Sep 1925	
777	Washington	George			09 Feb 1884	15 Jan 1926	
1065	Washington	Lorenia	Powell		16 Jun 1924	07 May 1982	
1103	Washington					24 May 1910	30 Yrs
1182	Washington	Molly		(Mrs.)		03 Jul 1912	26 Yrs
1311	Washington	Percy			06 Oct 190?	23 Nov 1919	
1342	Washington	Millie				06 Jul 1922	
1345	Washington	Dorothy	Jean		25 Feb 1940	28 Dec 1940	10 Mos 2 Days
1387	Washington	Rosie	Lee			01 Oct 1941	53 Yrs
1515	Waters	James				18 Sep 1868	

"KILLED ACCIDENTALLY"



"MR. SAM WARD, whose picture appears above, was killed in a truck accident Tuesday, Sep. 21, 1943. Funeral services for the deceased were held from the family residence, 1642 1-2 Patman street, Sunday, September 26, with Reverend K. R. Reed officiating. Interment was in the Star cemetery, under the direction of Gilmore Funeral Home. The family extends sincere thanks to all who showed kindness and sympathy during their sad hours of bereavement.

"He is survived by: Mrs. Elizabeth Ward, wife; Miss Archie Mae Ward, daughter; Mrs. Malinda Pitchsund (?), sister, 1414 Washburn street, Chicago; Mrs. Millie Ward, grandmother, R(oute) No 6, Box 12, Lexington, Miss., and many relatives and friends, of this city."

Source: *The Shreveport Sun*, Shreveport, Louisiana, page 2, column 8, dated October 9, 1943; microfilm Roll No. 498, Archives Room, Southern University Library, Shreveport Campus, Shreveport, Louisiana.



Star Cemetery, Caddo Parish, Shreveport, Louisiana

THE GENIE FOURTH QUARTER 2002

194

ID	Surname	First Name	Middle Name	Title	Birth Date	Death Date	Age
1516	Waters	Mary			1869	1942	
385	Watkins	James				28 Feb 1907	28 Yrs
96	Watson	Sharlett				26 Feb 1934	62 Yrs
141	Watson	Abe				13 Feb 1940	
1228	Watson	Mable	C. Williams		1894	1933	
927	Watts	John			10 Nov 1889	14 Feb 1908	
928	Watts	Walter	H.		09 Apr 1879	07 Mar 1905	25 Yrs 10 Mos 26 Day
931	Watts	Mattie			1886	1948	
978	We	Ne	Bane__				
554	Weathers	Sarah				22 Mar 1949	
1328	Webb	J.	B.	Rev.	1844	04 Feb 1915	
453	Webster	Mary	M.		1895	14 Apr 1922	
732	Webster	Fient?				02 ---t 1922	40 Yrs
295	Webster	George	W.			--- Jan 1918	
65	Wells	Josephine			02 May 1900	23 Sep 1938	
1528	Wells	Warren	Calo		1922	1924	
1254	Wells	Mattie			23 Apr 1897	01 Sep 1915	18 Yrs
548	Wesley	Gus			12 Aug 1875	07 Feb 1950	75 Yrs
727	Wesley	Mary	Lee	(Mrs.)		26 Jan 1923	54 Yrs
1525	West	Margaret				1905	
587	Westly	Joeaner				04 Feb 1905	62 Yrs
968	Whaley	Hattie	Beatrice		01 Jan 1901	22 Nov 1912	11 Yrs 11 Mos 22 Day
168	Whit	Thomas	C.		21 Feb 185?	27 Nov 1914	
173	White	Laura	J.		1865	1951	
435	White*	Della				09 Aug 1943	65 Yrs
801	White	Annie			26 Dec 1890	29 Jan 1940	
1514	White	Ethel	S.			16 Jan 1902	
1517	White	Thomas	C.		1851	1914	
1337	White	Jeriffey	Albert		01 Jan 1865	27 Feb 1884	
1350	White	Laura				09 Nov 1924	63 Yrs
1351	White	Nancy	E.		30 Jun 1838	14 Apr 1905	

"FINAL RITES HELD FOR MRS. DELLA WHITE"

"Mrs. Della White, 1529 Royal St., died in her home August 9. Funeral services were held Monday from the Stoner Hill Baptist church at 3:00 o'clock with Rev. Jacobs officiating. Interment in Star cemetery under direction of J. S. Williams & Son funeral home. Survivors are three daughters, a son, three sisters, seven grandchildren and other relatives and friends."

Source: *The Shreveport Sun*, Shreveport, Louisiana, page 8, column 3, dated August 21, 1943; microfilm Roll No. 498, Archives Room, Southern University Library, Shreveport Campus, Shreveport, Louisiana.

Star Cemetery, Caddo Parish, Shreveport, Louisiana

THE GENIE FOURTH QUARTER 2002

195

ID	Surname	First Name	Middle Name	Title	Birth Date	Death Date	Age
1226	Whitmore	Minerva				08 Mar 1914	79 Yrs
159	Whittaker	Johnnie				28 Sep 1874	
160	Whittaker	Louisa				18 Dec 1854	
163	Whittaker	Mary				04 Nov 1895	Over 66 Yrs
158	Whittaker, Sr.	Dudley				11 Feb 1903	73 Yrs
162	Whittaker, Sr.	Dudley					
174	Wiggins	George			28 Dec 1876	12 Nov 1926	
426	Wiggins	James			15 May 1869	24 Apr 1916	
428	Wiggins	Oscar			01 Mar 1903	29 Jun 1935	
1523	Wiggins*	Ella	Mae		1903	1945	
427	Wiggins *	Lillie			06 Jun 1886	23 Dec 1931	
1513	Wilburn	Cora	Lee		1876	1910	
988	Wilburt	J.	H.		02 July 1852	28 Oct 1914	
223	Will	Pete				11 Feb 1896	
1527	Will	John				1912	
616	William	Lila?			23 Aug 1872	26 Dec 1941	
91	Williams	Johnnie Bell	Bryant		23 Dec 1904	15 Jan 1931	
93	Williams	Sarah			1871	08 Apr 1936	
153	Williams	Dave				11 Apr 1922	42 Yrs
193	Williams	George				16 Jan 1927	50 Yrs
209	Williams	Nerphie			31 Oct 1889	29 Jan 1919	
155	Williams	Marcus				25 Feb 1923	47 Yrs
475	Williams	Grace	A.			10 May 1939	81 Yrs
476	Williams	Albert	Stewart		1884	1904	
507	Williams	Matilda	Lucy			04 Apr 1960	
517	Williams	Carol	Sue			1957	
751	Williams	Emily				28 Jul 1923	
892	Williams	Nathaniel				22 Sep ---	
946	Williams	Hedma			27 Jun 1897	--- Aug 1920	
970	Williams	Sarah				20 Jan 1921	
971	Williams	Frank				22 Aug 1920	46 Yrs



MRS. LILLIE WIGGINS,  
1634 Looney St., who was fatally  
stricken in Lawrence St., Dec. 23.

"CARD OF THANKS"

"We wish to thank our many friends for their kindness show us during the time...when our mother, Mrs. Lillie Wiggins, suddenly passed away, December 23....

"Miss Ella Mae Wiggins, daughter; Mr. and Mrs. Oscar James Wiggins, son and daughter-in-law; Mesdames Hattie Hemphill and Bertha Monnie, sisters; Mr. Walter Murray, brother; Mrs. Emma Wells and Theo Nelson, nieces."

Source: *The Shreveport Sun*, Shreveport, Louisiana, page 8, column 2, dated January 23, 1932; microfilm Roll No. 494, Archives Room, Southern University Library, Shreveport Campus, Shreveport, Louisiana.

Star Cemetery, Caddo Parish, Shreveport, Louisiana

ID	Surname	First Name	Middle Name	Title	Birth Date	Death Date	Age
973	Williams	Harrie	L.		05 Feb 1887	24 Apr 1920	33 Yrs
976	Williams	Annie			12 Dec 1865	05 Jul 1907	
991	Williams	Annie				10 Mar 1925	38 Yrs
1029	Williams	Ida		Mrs.	29 Aug 1882	31 Apr 1916	34 Yrs
1030	Williams	Celestine		(Mrs.)	01 Apr 1908	17 Dec 1915	7 Yrs 9 Mos 15 Days
11	Williams	Albert				26 Jul 1921	45 Yrs
13	Williams	Mamie			16 Jul 1849	08 Feb 1946	
16	Williams	James			04 Aug 1903	15 Oct 1926	
313	Williams	J.	D.		--- Sep 1877	10 Sep 1942	65 Yrs
323	Williams	Emma			08 Mar 1906	24 Feb 1967	
642	Williams	Betty	Jo			13 May --46	3 Wks
654	Williams	Katie	V.		25 Nov 1901	14 Jun 1905	3 Yrs 7 Mos 9 Days
673	Williams	Aaron			22 Jan 1827	21 Feb 1907	80 Yrs
683	Williams	Lucy		Mrs.		15 Dec 1910	80 Yrs
688	Williams	J.	D.		--Nov 1866	02 May 1918	
689	Williams	Willie	H.			05 Feb 1924	43 Yrs
817	Williams	James			20 Sep 1836	28 Apr 1924	
1519	Williams	Sweetme			1870	1947	
1521	Williams	Chapolette				1955	
1524	Williams	Miley				1905	62 Yrs
1526	Williams	Ada			1877	1944	
1088	Williams	K.				03 Aug 1926	
1144	Williams	Rufus			02 Jul 1918	12 Mar 1985	
1168	Williams	J.	F.		30 Jul 1861	12 Jan 1912	
1200	Williams	Charlie				03 Aug 1912	45 Yrs
1202	Williams	Carrie			04 Jun 1878	13 Aug 1913	
1214	Williams	Mose				25 Sep 1914	54 Yrs
1295	Williams	Mose			27 May 1901	24 Oct 1920	
1307	Williams	Dora				02 Jan 1947	54 Yrs
1335	Williams	Robert			07 Feb 1897	24 Oct 1950	
1338	Williams	Laura			23 Oct 1844	23 Jan 1911	87 Yrs

(Additional Decedent)

"MR. FELIX WILLIAMS  
PASSES"

"Mr. Felix Williams, nephew of Mrs. Inez Kyles, 1415 Ashton street, died April 16 in Stoner Hill. Funeral services were held Monday, April 19, at Trinity Baptist church, with Rev. C. H. Walker officiating. Interment was in the Star cemetery under the direction of J. S. Williams & Son funeral home. He is survived by an aunt and uncle, Mr. and Mrs. Willie Kyles."

Source: *The Shreveport Sun*, Shreveport, Louisiana, page 3, column 4, dated April 24, 1943; microfilm Roll No. 498, Archives Room, Southern University Library, Shreveport Campus, Shreveport, Louisiana.

Star Cemetery, Caddo Parish, Shreveport, Louisiana

THE GENIE FOURTH QUARTER 2002

197

ID	Surname	First Name	Middle Name	Title	Birth Date	Death Date	Age
1366	Williams	Walter			23 Feb 1892	09 Aug 1913	
304	Williams, Jr.	David			11 Jan 1915	30 Apr 1938	
653	Williams, Jr.	Nicholas	G.		05 Sep 1899	13 Jun 1911	11 Yrs 9 mo 8 days
3	Williams, Sr.	Eddie			27 Apr 1879	26 Feb 1929	
524	Willis	Katie				02 Nov 1911	62 Yrs
707	Willis	John	R. Clinton		14 May 1868	02 Aug 1942	
728	Willis	Nancy				25 Sep 1923	85 Yrs
947	Willis	Robert	T.		15 May 1874	06 Apr 1906	
948	Willis	Clarenda			1863	13 Oct 1920	
1197	Willis	Henry			09 Aug 1883	28 Aug 1912	
1386	Willis	Gussie					
1179	Willis	Patsy		(Mrs.)		04 Apr 1912	Abt 70 Yrs
105	Wilson	Alonzo				14 Sep 1948	47 Yrs
401	Wilson	Amie				28 Feb 1937	
703	Wilson	Arthur			1859	1926	
722	Wilson	Frank			15 Oct 1851	05 Mar 1928	
1002	Wilson	Bamon				27 Sep 1936	
1071	Wilson	Lee	Hubbard			1900	11 Yrs
1080	Wilson	Willis				14 Sep 1922	
1081	Wilson	James			26 Aug 1881	28 Jan 1902	
1105	Wilson	Allen			01 Oct 1925	01? Nov 1925	
1108	Wilson	Lizzie				11 Jul 1909	38 Yrs
1136	Wilson	Clora			01 Apr 1848	01 Apr 1911	63 Yrs
1237	Wilson	Madgie			20 Sep 1884	04 Oct 1914	
1259	Wilson	Harvey				05 Mar 1918	
1266	Wilson					03 Aug 1945	82 Yrs
1312	Wilson	Mary	J.			02 Nov 1888	
1321	Wilson	Bessie				28 Mar 1920	25 Yrs
1392	Wilson	Henderson				05 Oct 1946	85 Yrs
1393	Wilson					03 Aug 1945	82 Yrs
338	Wilson*	Henrietta			17 Mar 1871	25 Dec 1943	(Obituary, page )

(Additional Decedent)

"FUNERAL RITES HELD HERE FOR S. S. WILLIS OF TERRELL, TEXAS"

"Funeral rites for the late Prof. S. S. Willis of Terrell, Texas, who passed here last week at the home of his sister, Mrs., Lucy Smith, 1805 Garden street, were held from the parlors of the Good Shepherd Funeral Home, in Buena Vista street Sunday evening, June 13. Interment was in the Star cemetery. Rev. H. W. Allen, pastor of Avenue Baptist church, officiated.

"Messrs. S. J. Colvin, Joe Jackson, Louis Davis and Wm. Rayson of Terrell, Texas, brought resolutions of condolences from the Bethlehem Baptist church and the F & A. Masonic lodge of which the deceased was a devoted and esteemed member.

"The deceased was the son of the late Smith and Clarinda Willis of Forbing, La., and the brother of the late R. T., Columbus, Charles and Joe Willis, all well known in Shreveport and Caddo parish. Leaving home at an early age, Prof. S. S. Willis entered Fisk University, Nashville, Tenn., where he made a record as a scholar and orator. He took up residence in Texas where he was principal of many of the leading public schools, and made for himself an enviable record as an educator. Retiring from school work, he entered the business field, becoming a merchant. Falling health led him to come to Shreveport to live with his sister. The end came last week.

"He is survived by two sisters, Mrs. Lucy Smith and Mrs. Eliza McCoy, both of Shreveport, and ... other relatives."

Source: *The Shreveport Sun*, Shreveport, Louisiana, page 3, column 7, dated June 19, 1943; microfilm Roll No. 498, Archives Room, Southern University Library, Shreveport Campus. Shreveport, Louisiana.

Star Cemetery, Caddo Parish, Shreveport, Louisiana

THE GENIE FOURTH QUARTER 2002

198

ID	Surname	First Name	Middle Name	Title	Birth Date	Death Date	Age
1512	Wilson, Jr.	Abe			1877	1949	
952	Wilson, Sr.	Amos	M.		02 Aug 1875	21 Jul 1951	
106	Winton	Bella			05 Aug 1886	29 Dec 1943	
511	Woodard	O.	G.		06 Jan 1957	17 May 1957	
279	Woodard	Mary	Bell		1904	1945	
1374	Woodard	Louis			11 Feb 1883	18 Jan 1942	
196	Woods	Estelle	H.			27 Sep 1928	75 Yrs
549	Woods	Sammie			1908	1951	
1021	Woods	Nemire?			24 Sep 1890	16 Jan 1902	
305	Woods	Ella			30 Oct 1884	30 Mar 1942	
1518	Woods	Pall				24 Dec 1930	
1520	Woods	Edna			1910	1932	
1100	Woods	Willie	May		12 Oct 1897	08 May 1898	
1101	Woods	Julia			04 Jul 1873	07 Jun 1900	
1125	Woods	Elizabeth				26 Jan 1909	75 Yrs
565	Wright	Vinia				? Oct 1906	38 Yrs
1243	Wright	Alex			1861	1917	66 Yrs
1053	Wyatt	Elizabeth			03 Sep 1905	12 Aug 1926	
371	Young	Eva				23 Oct 1909	18 Yrs
1040	Young	Lucy				13 Oct 190--	
1042	Young	Angeline				06 Jan 1930	
1308	Young	Ida			27 Jun 1887	11 Aug 1944	47 Yrs

"McNEIL RESIDENT  
DIES"

"Mrs. Henrietta Wilson, 957 McNeil street, died after a short illness. Funeral rites were held Thursday at 1:30 p.m. from Hopewell Baptist church with Rev. C. E. Galloway officiating, and interment in the Star cemetery, under the direction of J. S. Williams and Son Funeral Home."

Source: *The Shreveport Sun*, Shreveport, Louisiana, page 8, column 5, dated January 1, 1944; microfilm Roll No. 498, Archives Room, Southern University Library, Shreveport Campus, Shreveport, Louisiana.

# Louisiana Records

Direct Index to Conveyances, Caddo Parish, Louisiana  
[Continued from The Genie, Vol. 36, Second Quarter 2002, p. 150]

1857	Edens, James George Andrews	L164	1849	Eicke, W. Sucn H. Hassenbranch	F342
1858	Edens, James M. George Andrews	L308	1858	Rivers, P.H. M. Watson	M94
1838	Edgerly, Daniel J. Lipscomb	A91	1859	Elder, David Robert Looney	N118
1840	Edgerly, Daniel W. Henry Lewis	A586	1844	Elgee, John K John Mahle	C153
1842	Edgerly, Daniel William Long	B211	1851	Elgee, John K. Richard Godwin	C356
1842	Edgerly, Daniel W. Willie A. Arrington	B452	1851	Elgee, John Richard Godwin	G968
1844	Edgerly, Daniel W. Charles N. Gary	C213	1853	Ellickerson, Willie A. Schoffner	H433
1854	Edmonds, Samuel William Douglass	H766	1848	Elliott, William R. James K. Bayliss	C842
1853	Edmunds, L & S John Walpole	H14	1854	Elliott, Mrs. L. William Robson	I95
1853	Edmunds, Lackery Last will	H530	1854	Elliott, Robert J.B. Welch	L358
1857	Edmunds, Lackery Sucession	K358	1859	Elliott, Robert S. John B. Mereto	M343
1857	Edmunds, Samuel B. Bridges	K633	1859	Elliott, Robert S. Henry Hunsicker	M340
1858	Edmunds, Samuel R. Nicholson	L274	1849	Ellis, Asa William W. George	F637.5
1859	Edmunds, Samuel I.W. Pickens	M274	1853	Ellison, Jefferson Rebecca Ellison	2-398
1859	Edmunds, Lackery Sucn Rbt. L. Gilmer	F61	1849	Elwyn, C.H. L. Sucn James Noe	D626
1838	Edwards, Larkin Washington Jenkins	A102	1848	Eppes, B.F. J.W. Morris	D31
1839	Edwards, Larkin Angus McNeil	A400	1849	Eppes, Ballard N. Moore et all	F106
1838	Edwards, Larkin Angus McNeil	A400	1853	Eppes, B.F. V.S. and P. RR Co,	H461
1840	Edwards, Larkin Abnaar Shenick	A428	1856	Eppes, Mary Ben L. Hodge	K298
1840	Edwards, Larkin W.W. George	A536	1857	Eppes, L.T. M. Mulhall	K625
1845	Edwards, R. J.S. Oldham	C335	1857	Eppes, B.F. R.C. Oglesby	K577
1846	Edwards, Larkin John Morris	C385	1857	Eppes, L.T. M. Mulhall	K625
1846	Edwards, Matthews John Bryce	C678	1839	Erwin, J. McNeill & Sewell	A290
1847	Edwards, Larkin A. McNeill	C397	1841	Erwin, J. James Wardsworth	B93
1848	Edwards, Charles Henry Marshall	D389	1842	Erwin, James A. Erwin	B504
1851	Edwards, Charles David Gilmer	G378	1842	Erwin, Harrison James Erwin	J B-?
1851	Edwards, Z. Sucn L.P. Spyker	G379	1842	Erwin, James A. Erwin	B506
1847	Edwards, Matthew Joseph Williams	M22	1845	Erwin, James Andrew Erwin	C239
1859	Edwards, Edward Henry Marwhall	P326	1843	Erwin, James L.A. Erwin	B509

1849	Erwin, Andrew Henry C. Erwin	C627	1853	Eubanks, Eliz V.S. & RR Co.	H524
1849	Erwin, Andrew M.E. Davis	E3	1854	Eubanks, Eliz. John N. Jordon	I214
1849	Erwin, Andrew Henry M. Hood	E61	1849	Evans, Jesse Frellseno & CO.	F355
1849	Erwin, Andrew Henry M. Hood	E87	1849	Evans, Jesse G.P. Evans	F741
1849	Erwin, William F.M. Bickham	E218	1851	Evans, George William Kerley	G72
1849	Erwin, Andrew Henry C. Erwin	F113	1851	Evans, J.V. Sucn- Wright & Hunsicker	G283
1849	Erwin, Henry Henry Hcod	F201	1851	Evans, J.V. Moses Greenwood	L689
1849	Erwin, J.A. B.S. Hodge et al	F269	1849	Evans, J.W. L. J. Bickerstaff	F687
1851	Erwin, Henry L. Currie	L. C G38	1849	Evers, H. W. Elixon	E223
1851	Erwin, Henry C. William Cooke	G41	1848	Fagan, Sucn Hy P. Stepehsn	Land F79
1851	Erwin, James John F. Herndon	G102	1857	Folley -- John Shows	Land K486
1858	Erwin, James Heirs Em. D. Cook	L683	1858	Faber, Arnold Mayer Bredig	Lots M74
1859	Erwin, Andrew E. Erwin	N98½	1858	Farmer, Samuel R.G. Bagbey	Land G43
1849	Estes, Matthew James V. Taylor	F300	1850	Farmer & Merchant's Bank Hy L. Douglas	Bank Com. G579
1849	Estes, Rosaline J.B. Irwin	F814	1852	Farmers & Merchant's Bank J.R. Malbie	P. Atty G578
1858	Estes, Rosaline V.S. & T. RR Co.	L371	1854	Farmer, John R.M. Hanks	Land H523
1839	Estip, John & Mary Anthony S. Arrington	A183	1855	Farmer, J.A. J.A. Norris	Land H523
1841	Estiss, John & Mary Anthony Willie Arrington	A613	1855	Farrell, Lewis B/B. Lee	Lot C235
1859	Ethrington, Edw. John B. Hussey	N23	1844	Farrell, Lewis France E. Sewell	Land C817
1848	Ethienne--Cabbott & CO. Joseph Guerra	D225	1850	Farmer, Sam Daniel C. Quarles	Land F767
1842	Eubanks, Caleb J.G. Jones	B409	1851	Farrell, Sarah E. Mrs. E.E. Sewell	Lots G242
1844	Eubanks, Caleb J.G. Jones	C219	1853	Farrell, Lewis E. Mrs. E. E. Sewell	Lots H224
1846	Eubanks, Caleb Charles Young	C383	1850	Fatheree, H.H. Joseph & C.C. Ford	Land F210
1848	Eubanks, Caleb Daniel Moseley	C497	1851	Fatheree, H.H. George B. Merritt	Land G402
1849	Eubanks, Caleb Henry D. Bullard	D497	1845	Felps, James Sucn Michael Dickson	Land G789
1849	Eubanks, Caleb C.C. Hearne	E125	1845	Felps, James Sucn Michael Dickson	Land G967
1851	Eubanks, C.N. Eliz. Eubanks	G565	1841	Felton, Noah Michael E. Davis	Bond b49
1852	Eubanks, Eliz. David I. Hooks	G524	1841	Felton, Noah William L. Pickens	Land B95
1853	Eubanks, Caleb Charles G. Young	I123	1841	Felton, Noah M. Felton	P. Atty B135

TO BE CONTINUED

## Surname Index...Fourth Quarter 2002

[A surname may appear more than once on a page]

<u>Alford</u> 170	Coates 161	Ellickerson 199
Allums 169, 171, 174, 178	Cokely 160	Elliott 182, 199
Areson 159	Cole 180	Ellis 161, 199
Areson/Aaronson 160	Conly 167, 168, 169, 170	Ellison 199
Armistead 178	Conly 171, 172, 180, 181	Elwyn 199
Austin 161	Conway 158	Emory 182
<u>Bailey</u> 178, 179	Cottrell 159	Eppes 199
Baird 157	Cowart 172, 173, 180	Erwin 199, 200
Baker 179	Crawford 181, 182	Estes 200
Barganies 179	Crump 182	Estip 200
Bartley 179	Crumpton 182	Estiss 200
Becker 166	Crumrine 161	Ethienne 200
Beckham 179	Cummings 182	Ethrington 200
Beckner 158	Curtis 160	Eubanks 200
Berly 157	<u>Davidson</u> 167, 172	Evans 200
Blackman 179	Davis 182	<u>Faber</u> 200
Blair 160	Davison 182	Fagan 200
Blake 179	Day 182	Faggard 182
Boies 169, 179	Deardoff 182	Farmer 200
Boone 153, 179	Deerman 182	Farmers 200
Box 179	Dehaan 182	Farrell 200
Breedlove 179	Dixon 182	Fatheree 200
Brooks 170	Dobson 173	Felps 200
Brown 157, 173	Dorsey 161	Felton 200
Bryan 179	Due 182	Felts 182
Bullock 179	Duffield 157	Fields 170
Burkett 179	Dumas 182	Flemming 182
Burrow 157	Dupree 169, 170	Folley 200
Byrd 170	<u>Ealy</u> 188	Forrest 182
<u>Callia</u> 170	Edens 199	Fox 166
Carlisle 180	Edgerly 199	Franklin 182, 183
Carlisle 180	Edmonds 199	French 160
Carraway 180	Edmunds 199	<u>Gamel</u> 183
Carter 172, 179, 180	Edwards 170, 199	Gardner 183
Castleberry 172	Elder 199	Garrett 183
Chandler 170	Elgee 199	Gay 183
Clark 171, 180	Elicks 199	Gearold 183



## Surname Index...Fourth Quarter 2002

[A surname may appear more than once on a page]

Gibson 184	Lord 169	Session 186
Giddens 167, 169, 172, 174	<u>Manchester 165</u>	Seymore 186
Giddens 175, 176, 183, 184	Manning 169	Seymour 186
Golson 184	Martinez 154	Sharp 157, 186
Grant 169, 184	McCall 161	Shaw 186
Graves 183	McCook 158	Shedrick 186
Gray 183	McCoy 173	Sheeley 156
Green 184	McCrary 171	Shelton 186
Griffin 156	McDade 158	Shepard 174
<u>Hall 170, 171, 184, 185</u>	McGinty 167, 172, 173, 174	Shepherd 167
Hand 185	McLaughlin 156	Sheriff 159, 160, 161
Harrass 185	Meider 153, 154	Sherman 186
Hasty 185	Miller 158	Shields 186
Hatton 185	Mills 164	Shivers 186
Hausey 185	Moore 175	Sholars 186
Hayes 185	Moreland 170	Shreve 159, 160
Hays 185	Morgan 167	Simmons 186
Hazard 159, 160, 161	<u>Nettles 170, 171</u>	Simms 186
Head 157	Northrup 161	Sims 186
Hendren 157	<u>Orrest 160</u>	Singleton 170
Hendricks 154	<u>Parham 158</u>	Skinner 186
Hicks 167, 174, 185	Perego 170	Slater 186
Hucabee 170	Piles 164	Slaughter 186
<u>Jackson 159</u>	Pockrus 156	Slebbett 187
Jennings 153	Pope 161	Sloan 187
Jolley 173	Poter 169	Small 187
<u>Key 175</u>	Potter 160	Smedler 187, 188
Kirtley 170	Price 170	Smith 173, 187, 189
Kolb 173	<u>Quirke 164</u>	Smithe 189
Krupp 165	<u>Reagan 155</u>	Sneed 189
<u>Lane 175</u>	Riley 172	Spawn 189
Laxford 160	Rivers 199	Spears 189
Lee 169	Rogers 160	Spencer 189
Leonhardt 159	Rudy 159	Spikes 189
Leshe 171	<u>Sanborn 161</u>	Stand 189
Lewis 159	Seay 174	Stanley 189
Loftin 151	Selvage 186	Starks 189

## Surname Index...Fourth Quarter 2002

[A surname may appear more than once on a page]

Steen 189	Townsend 192	Whaley 194
Stephens 159, 189	Turner 192	Whit 194
Stephenson 189	Tutson 170	White 194
Sterrett 189	Tylor 192	Whitmore 195
Stevens 189	<u>Underwood 192</u>	Whittaker 195
Stevenson 189	<u>Varney 158</u>	Wiggins 195
Steward 189	Vaults 192	Wilburt 195
Stewart 189, 190	Ville 192	Wilcox 159, 160
Stewman 190	Vinson 192	Will 195
Stinson 190	<u>Waddy 192</u>	William 195
Stith 190	Walier 192	Williams 195, 196, 197
Stokes 190	Walker 192, 193	Willis 197
Strickland 156	Wallace 193	Wills 197
Strong 190	Walls 193	Wilson 197, 198
Sumpter 190	Walters 193	Wimberly 169
Swan 190	Wamsley 193	Windon 198
Swann 190	Ward 193	Wood 159, 170
Swans 190	Warner 193	Woodard 198
Sweet 176	Warpool 193	Woods 198
Sylvest 170	Warren 193	Wright 198
<u>Talton 167, 170</u>	Washington 161, 193	Wyatt 198
Tatum 190	Water 174	<u>Yates 173</u>
Taylor 190	Waters 193, 194	Young 198
Tea 190	Watkins 194	
Teague 191	Watson 194	
Templar 174	Watts 194	
Terry 191	We 194	
Theus 191	Weathers 194	
Thomas 170, 191	Webb 194	
Thompson 191, 192	Webster 194	
Tidwell 192	Weiland 157, 159, 162, 164	
Tiggs 192	Weiland 165, 169	
Tiggue 192	Wells 194	
Tillman 192	Werner 170	
Tillmon 192	Wesley 194	
Tisby 192	West 153, 194	
Tomkies 192	Westly 194	