



VOLUME 37

FIRST QUARTER 2003

NUMBER 1

PUBLISHED QUARTERLY BY

ARK-LA-TEX GENEALOGICAL ASSOCIATION, INC.

P.O. BOX 4463
SHREVEPORT, LOUISIANA 71134-0463

THE GENIE

VOLUME 37

FIRST QUARTER 2003

NUMBER 1

Table of Contents

Features

- 1 From The President
by Victor C. Rose
- 2 In Memory of Our Dearly Departed Friend
[Mrs. Ethel E. Krause]
- 3 Be Set Free from Servitude Forever
by David Allan Hardin, Genealogy Librarian (Broadmoor Branch Library)
- 5 Available Genealogy CD-ROMs
by Brenda S. Williams, Genealogy Librarian Assistant (Broadmoor Branch Library)
- 9 Pedigree Chart and Ahnentafel Chart
by Harry Lazarus
- 12 Confederate Soldiers Who Died at the Confederate General Hospital
In Shreveport, LA [1864 - 1865]
by Joe E. Slattery, Library Specialist (Broadmoor Branch Library)
- 17 A Family Reunion and Celebration
- 17 A Helpful Tip: Colored Paper and Microfilm
by Beth Manchester (Ancestry.com)
- 18 Selected Marriage Records: Morehouse Parish, LA
by Isabelle Woods
- 23 The Arnold--Tidwell House
by Dale Jennings
- 27 Huckabay Family Record
by Herman L. Weiland
- 28 Laconia, New Hampshire: City Directory, 1925 (Lakeport & Weirs)
by Herman L. Weiland
- 28 Welcome to our New Member
- 29 Addendum to Star Cemetery, Caddo Parish, LA
by Isabelle Woods
- 31 Willow Chute Plantation & The Community
by Dale Jennings
- 35 QUERIES by Isabelle Woods
- 37 LA Records: Direct Index to Conveyances, Caddo Parish, Louisiana

ARK-LA-TEX GENEALOGICAL ASSOCIATION, INC.

Post Office Box 4463

Shreveport, Louisiana 71134-0463

The ***Ark-La-Tex Genealogical Association, Inc.*** is a non-profit, non-sectarian, non-political, educational organization dedicated solely to the cause of genealogy. This organization is governed by these purposes:

To collect, preserve, and make available genealogical materials, documents, and records; to encourage an interest in genealogy and to sponsor educational programs for its development; to promote and publicize the City of Shreveport, Louisiana, as a major genealogical research center for genealogists and historians; to cooperate with and assist all other genealogical, historical, and patriotic societies in the furtherance of these purposes; to compile and publish a quarterly composed of records and data related to the science of genealogy.

The ***Ark-La-Tex Genealogical Association, Inc.*** meets on the second Saturday of each month from 1:00 p.m. to 3:00 p.m. at the Randle T. Moore Senior Citizen Center, 3101 Fairfield Avenue, Shreveport, LA.

Dues for membership from January 1 through December 31 of each year in the ***Ark-La-Tex Genealogical Association, Inc.*** are \$12.50 for an Individual Membership and \$15.00 for Married Couples.

All members receive four issues of The GENIE, which is published quarterly.

The ***Ark-La-Tex Genealogical Association, Inc.*** will publicize a book of genealogical interest in The GENIE when submitted by the publisher or an author. These books are then donated to the Genealogy Department of the Broadmoor Branch Library, 1212 Captain Shreve Drive, Shreveport, Louisiana 71105, where they are made available to the public. The Ark-La-Tex Genealogical Association, Inc. periodically donates other genealogical material to this library.

The ***Ark-La-Tex Genealogical Association, Inc.*** welcomes queries, which are published free in The GENIE. A query must be no more than seventy (70) words, either typewritten or legibly handwritten.

BOARD OF DIRECTORS (2003)

President	Victor C. Rose	(318) 687-3673
First Vice President	Reed C. Mathews	(318) 797-6550
Second Vice President	Jim Johnson	(318) 746-1851
Recording Secretary	Betty Jon Gorman	(318) 868-2807
Corresponding Secretary	Chris Stoll	(318) 746-0383
Treasurer	Herman L. Weiland	(318) 746-5811
Trustee (2004)	Cynthia D. Millen	(318) 929-2983
Trustee (2004)	Willie R. Griffin	(318) 631-6031
Trustee (2005)	Sammie Craft	(318) 965-0044
Trustee (2005)	Leonard Green	(318) 865-4889
Past President	Marguerite J. Loftin	(318) 746-4598

PUBLICATION (THE GENIE)

Editor (Acting)	Willie R. Griffin
Typing & Computer Editing	Roy L. Henderson
Book Reviews	Herman Weiland
Queries, Typing & Indexing	Isabelle Woods
Printing	Victor C. Rose
Labels	Michael Broussard
Bulk Mailing	Carl & Pat Hallgren
Collating	Constance Whatley
	Veretta & Herman Weiland

ALTGA COMMITTEES

Hospitality	Thelma Sabbath	(318) 635-3637
Hospitality	Cynthia D. Millen	(318) 929-2983
Publicity	Betty Jon Gorman	(318) 868-2807
Telephone	Vernell Rose	(318) 687-3673
Finance	Willie R. Griffin	(318) 631-6031
Programs	Marguerite Loftin	(318) 746-4598
Historian	Betty Jon Gorman	(318) 868-2807
Resale	Cynthia D. Millen	(318) 929-2983
Exchange	Herman Weiland	(318) 746-5811
Education	Sammie Craft	(318) 965-0044
Education	Leonard Green	(318) 865-4889
Web Page		
Seminar	Jim Johnson	(318) 746-1851

Statement of Publication

The Genie is published quarterly with issues in February, May, August and November. Each member receives four issues for each year of membership. All material published in *The Genie* is compiled and contributed by the members. Members and nonmembers of the Ark-La-Tex Genealogy Association may contribute material for publication in *The Genie* (bible records, cemetery listings, diaries, wills, etc.). Such contributions are appreciated and encouraged. Send material for publication to *The Genie* at the Association's mailing address. Material will be used at the discretion of the Editorial Review Board as space permits. We reserve the right to edit and/or condense material as needed. Submission deadlines are the last week before the first day of the month of quarterly publication.

The Association exchanges periodicals with other genealogical and historical organizations publishing data of general interest. We regret that we cannot exchange with limited family organizations. However, send samples of your publications for review. Since many publications possess information of value concerning families contain therein.

When Cemetery Records are submitted, include the name of the contributor, the copier, date copied and cemetery locations (such as road name or number, community, etc.) and also the Section, Township, and Range, if known. When Bible Records are submitted, give date and publisher of the Bible (if known), date copied, name of the contributor, name of present owner and the original owner.

Queries are free and encouraged. Please submit them typed or very plainly written. Space is limited. Please be brief and concise, using no more than 70 words per query. The editor reserves the right to edit or reject queries not suitable for publication.

The Genie cannot be responsible for errors or inaccuracies, but will hasten to publish corrections. Please read the material carefully and advise the Association in writing of corrections.

This publication is indexed in the Periodical Source Index published by the Allen County Public Library Foundation, Ft. Wayne, IN.

Copyright Laws

All who submit material from any source should be aware of copyright restrictions. When applicable, permission to use published material must be in writing and should be included when manuscript is submitted. Source and date of information used should be indicated.

From The President
Greetings

February 2003

Dear Members and Associates:

I would like to introduce myself to all of you Association members and friends. I did serve as the president of the Association in 1994 and 1995 and am looking forward to serving the next two years. There are a great number of areas in the Association that will be of a challenge to me.

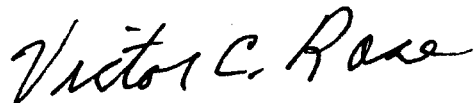
Through the Genie we reach out to a large number of states, and maintain a program of exchange with more than ninety other clubs and associations. Just recently the Association has made a purchase of a new printer to handle the great amount of printing for our quarterly, mail and various notices yearly

The computer world has opened new doors of search for your family history. Great numbers of genealogist use the "NET" every day, it cuts into a big share of my time. Continue to use your old sources of search, there are advantages in each area.

There are some new studies that we are to introduce in our annual genealogy work shop and classes for beginners. May of 2002, the date of our last set of Classes, there were thirty seven students who were beginners. This stage, a time of beginning your search, has proven the right time to recruit new members.

Shreveport, Louisiana has a new library for it's Genealogical research. Some of those that have come here were amazed as to how far you may take a search from this one location. Recent records, the census of 1930 has attracted a big number of takers. The people who gather the census must wait seventy two years before they allow its users to see their work, if you are one of those millions that are out there, go for it.

At the time of my next letter I expect to have heard from some of you, good news or bad news. Stay in those Libraries and courthouses, I would hope I could help you in your search.



Victor Chambliss Rose
President

In Memory
Of Our
Dearly Departed Friend

Mrs. Ethel E. Krause

Ethel E. Krause died December 18, 2002, in Carlsbad, New Mexico, formerly of Bossier City, Louisiana. She was born August 21, 1921 to Arthur Roy Callender and Martha Daringer Callender in Chicago, Illinois.

A graveside service was held on Friday, December 27, 2002 at 2 p.m. at Rose-Neath Cemetery on Swan Lake Road in Bossier City, Louisiana.



Mrs. Krause was a long time member of the Ark-La-Tx Genealogy Association, Inc., and her major supportive efforts helped build the association into a strong and active organization.

She is perhaps best known for her many years of devotion and outstanding work on the "Genie", where she served as Editor of this publication and Treasurer for the Association.

Mrs. Krause had been so very faithful over a great number of years; we all miss her not being here with us. It was unfortunate that her husband preceded her in death causing her to leave Bossier City to be near other family members in New Mexico.

Her support in all efforts of the Association were most commendable, she gave of her time and support to our every cause. We have lost a good friend and a loyal genealogist. She will be missed.

Be Set Free from Servitude Forever

by

**David Allan Hardin, Genealogy Librarian
Shreve Memorial Library – Broadmoor Branch**

As I am writing this in the month of February, I am reminded of the difficulties experienced by African American genealogists researching in the Antebellum South. Not only are the universal traps awaiting the intrepid researcher, but also the cold hard reality of scrolling through deeds and probate records to find one's ancestors, the property being sold or divided.

There is another cold hard reality that the Caucasian researcher must face--the discovery of a slave owning ancestor. I have seen many a person shrink away from this truth even to the point of leaving the slaves names out of their abstracts as if it were some negative visual hallucination.

Now it is my understanding that Genealogy is a fact based enterprise with a foot in the realm of science and a foot in that of art. I, myself, lean toward the scientific, but I believe that even our artistic brethren would agree that altering data due to an emotional response is, frankly, not something to which we should aspire. I feel no shame nor glory in acts that are not my own.

It is my thesis that, rather than shy away from the above situation, we must go out of our way to share and otherwise publish any information that might lead another human being to a potential ancestor. After all, there is a great likelihood that these individuals have living descendants.

I received from a cousin, some years ago, a transcript of the last will and testament of my 6th great-grandfather, John Overton, who died in Baton Rouge in 1830 [I have completed a new extract (to follow this article) from the East Baton Rouge Parish Courthouse microfilm located in the Broadmoor Genealogy Department]. The nuncupative will contained the following clause:

He gives & bequeaths to his wife Susannah Overton in usufruct for the term of four years his negro slaves, Jack negro man, & the negro woman Hannah, after which term it is his will that the said slaves be set free from servitude forever, in consequence of which disposition, his said wife or representative shall take the necessary steps before competent authority to obtain freedom of said slaves according to Law.

I have not looked into the fate of Jack and Hannah (listed as Anna in the inventory of John Overton), but perhaps this mention in a local genealogical periodical will illuminate someone's search.

So, in conclusion, let your hesitancy be gone. Share with the African American researcher in mind. To me, it is about respect. It is about showing Jack and Hannah the respect they deserve as fellow human beings. We are all now officially "free from servitude." Yet, why not make a genuine effort to serve another by publishing the facts, all the facts.

No. 318.

Testament

State of Louisiana
Parish of East Baton Rouge

On this fifteenth day of October in the year eighteen hundred & thirty I, Charles Tessier, Parish Judge and Notary Public in and for said Parish went to the domicile of John Overton resident of this town, where I found the said Overton sick in bed, but of sound mind and he expressed to me his intention of making his last will & testament, which he dictated as follows:

He declares that he has contracted a second marriage to his present wife Susannah Overton with whom he has a son, Thomas Jefferson

He declares to have, living, three children the issue of his 1st marriage viz: Jesse, Samuel & Cassandra at present absent.

He gives & bequeaths to his wife, Susannah Overton in usufruct for the term of four years his negro slaves, Jack negro man, & the negro woman Hannah, after which term it is his will that the said slaves be set free from servitude forever, in consequence of which disposition, his said wife or representative shall take the necessary steps before competent authority to obtain freedom of said slaves according to Law.

He declares that John Anderson is in his debt fifteen dollars.

He names his son Samuel Overton the executor of this his last will and testament giving unto him full power for same.

The foregoing will was thus dictated by the testator to the Notary undersigned, who wrote it as it was dictated and afterwards read it to the testator in a audible voice in presence of Mess. William Brown, Vincent Kirkland & Malcolm Pafterson witnesses residing in this town, and he ratified same as containing his last will & testament, which was written without turning to any other act. In witness whereof the testator hereto set his hand with said witnesses & the Notary the same day & year after the whole being read.

J.O.

Cli Tessier, P.J. Win. Brown V. Kirkland M. Patterson

At the time of signing the testator declared that he was unable, through weakness, to write more than the initials of his name: which he did as aforesaid in presence of said witnesses & the Notary

Ch. Tessier, P.J. Win. Brown V. Kirkland M. Patterson

Recorded this 19th of October 1830
Ch Tessier, P.J.

Available Genealogy CD-ROMs

Shreve Memorial Library - Broadmoor Branch
1212 Captain Shreve Drive; Shreveport, LA 71105
Provided by Brenda S. Williams, Genealogy Librarian Assistant

Acadian-Cajun Family Trees
African American Genealogy 1850-1880
African American in the 1870 Census
Asians, Australians, Mideasterners and Africans in the 1870 Census
British in the 1870 Census
Carteret County Court Minutes (Floppy Disks)
Canadians in the 1870 Census
Census Records: United Kingdom, 1851 [272]
Central and South Americans in the 1870 Census
Confederate Dead Database
Early Mississippi Records
Europeans in the 1870 Census
Family History Library Catalog (includes entries as of March 2000)
France's Forgotten Legion: French Military Service Records, Mississippi
Valley and Gulf Coast, 1699-1769
Freedman's Bank Records
FTM's African Americans in the 1870 Census [165]
FTM's Census Index: New York City, 1870 [287]
FTM's Census Index: Massachusetts, 1870
FTM's Colonial Virginia Source Records, 1600s-1700s [510]
FTM's Directory of Deceased American Physicians 1804 -1929 [507]
FTM's Early West Virginia Settlers, 1600s-1900s [520]
FTM's Family Finder Index Version 5.0
FTM's Family History: Virginia Genealogies [162]
FTM's Family History: Southern Genealogies 1600s -1800s [191]
FTM'S Family History: Southern Biographies and Genealogies, 1500-1940's [500]
FTM's Family Military Records: United States Soldiers 1784 – 1811 [146]
FTM 's Genealogical Records: Early Texas Settlers, 1700s -1800s [514]
FTM's Genealogical Records: Irish Source Records, 1500s -1800s [275]
FTM's Genealogical Records: Ontario and Nova Scotia Settlers, 1790 – 1860 [274]
FTM's Index to Griffith's Valuation of Ireland, 1846 – 1864 [188]
FTM's International Land Records: Irish Flax Growers, 1796 [271]
FTM's International Land Records: Tithe Applotment Books, 1823 – 1838 [262]

FTM's Irish Source Records, 1500s -1800s [275]
 FTM's Marriage Index: Arkansas 1779 – 1992 [6]
 FTM's Marriage Index: Georgia 1754 – 1850 [226]
 FTM's Marriage Index: Massachusetts, 1633 – 1850 [231]
 FTM's Marriage Index: New York City 1600s - 1800s [239]
 FTM's Marriage Index: AL, GA, SC, 1641 – 1944 [3]
 FTM's Marriage Index: AR, MO, MS, TX, 1766 – 1982 [5]
 FTM's Marriage Index: Arizona, California, Idaho, Nevada 1850 – 1925 [225]
 FTM's Marriage Index: IL, IN, 1790 – 1850 [228]
 FTM's Marriage Index: IL, IN, KY, 01-I, TN, 1720 – 1926 [2]
 FTM's Marriage Index: Louisiana 1718 – 1925 [1]
 FTM's Marriage Index: MD, NC, VA, 1624 – 1915 [4]
 FTM's Marriage Index: Mississippi & Florida, 1800 – 1900 [242]
 FTM's Marriage Index: Selected areas of NY 1639 – 1916 [401]
 FTM's Marriage Index: Selected States, 1728 – 1850 [227]
 FTM's Massachusetts Town, Probate, and Vital Records [502]
 FTM's Military Records: Confederate Soldiers 1861 – 1865 [119]
 FTM's Military Records: U.S. Soldiers 1784 – 1811 [146]
 FTM's Mortality Index: United States, 1850 – 1880 [164]
 FTM's Passenger & Immigration Lists: New York, 1820 – 1850 [273]
 FTM's Passenger and Immigration Lists Index, 1500s - 1900s [354]
 FTM's Passenger and Immigration Lists: Boston 1821 – 1850 [256]
 FTM's Passenger and Immigration Lists: Germans to America 1875 – 1888 [356]
 FTM's Passenger and Immigration Lists: Germans to America 1850 – 1874 [355]
 FTM's Passenger and Immigration Lists: New Orleans, 1820 – 1850 [358]
 FTM's Scottish Immigrants to North America, 1600s - 1800s [268]
 FTM's Social Security Death Index: United States 1937 – 1996 [110]
 FTM's Veteran's Schedules .US Selected States, 1890 [131]
 FTM's Virginia Vital Records: 1600s - 1800s [174]
 Genealogy- California, Nevada, Oregon Births, Deaths, Marriages 1700s -
 General Land Office: Alabama
 General Land Office: Arkansas
 General Land Office: Florida
 General Land Office: Louisiana
 General Land Office: Minnesota
 General Land Office: Mississippi

General Land Office: Ohio
 Germans in the 1870 Census
 GRS Colonial America- Pre-1790- Census Index, Tax Lists [136]
 GRS Louisiana Marriage Records [1]
 GRS Marriage Records: Early 1850 - West of Mississippi River [227]
 GRS Marriage Records: Early 1850 - Southern States [229]
 GRS Master Name Index
 GRS Ohio Genealogical Society -- Ohio, 1880 Census Index [20]
 GRS US Census Index - 1840 - 1849 Southern States [152]
 GRS US Census Index Series - 1790 [137]
 GRS US Census Indexes and Mortality Schedules - Texas [49]
 Heritage Book Archives: Ireland Volume 1
 Heritage Book Archives: Kentucky Volume 2
 Heritage Book Archives: Massachusetts Cemetery Records Volume 1
 Heritage Book Archives: Virginia Volume 4
 Heritage Quest - US Marriage Record Index 1691 - 1850
 Irish in the 1870 Census
 Mississippi Records: Index of Wills, 1800- 1900; Confederate Grave
 Registrations; Newspaper Abstracts, 1801 - 1863; and Histories of Attala, Carroll, Holmes
 and Yazoo counties
 Periodical Source Index
 Princess Anne County, Virginia, Deeds, Wills, and Guardianships [1098]
 Records of Louisiana Confederate Soldiers (Booth) (includes other related databases)
 Scandinavians in the 1870 Census
 World Family Tree - Volume 01
 World Family Tree - Volume 02
 World Family Tree - Volume 03
 World Family Tree - Volume 04
 World Family Tree - Volume 05
 World Family Tree - Volume 06
 World Family Tree - Volume 07
 World Family Tree - Volume 08
 World Family Tree - Volume 09
 World Family Tree - Volume 10
 World Family Tree - Volume 11
 World Family Tree - Volume 12



World Family Tree – Volume 13 – 17: Super Bundle III
World Family Tree – Volume 18 – 22: Super Bundle IV
World Family Tree – Volume 23 – 27: Super Bundle V
World Family Tree – Volume 28
World Family Tree – Volume 28 – 32: Super Bundle 6
World Family Tree – Volume 29
World Family Tree – Volume 30
World Family Tree – Volume 33 – 37: Super Bundle 7
World Family Tree – Volume 38 – 42: Super Bundle 8
World Family Tree – Volume 43 – 47: Super Bundle 9
World Family Tree – Volume 51
World Family Tree – Volume 52
World Family Tree – Volume 53
World Family Tree – Volume 54
World Family Tree – Volume 55
World Family Tree – Volume 56
World Family Tree – Volume 58 – 62: Super Bundle 12
World Family Tree – Volume 63 – 67: Super Bundle 13
World Family Tree – Volume 68 – 72: Super Bundle 14

Have You Paid 2003 Dues?

Dues for the calendar year 2003 are now due. If you have not yet remitted your payment, we urge you to do so.

An application for new and renewing members is enclosed with this Genie. It is very important that you complete this form and mail it with your remittance.

If you have sent your check without the completed application, please fill it out and send it or bring it to the next monthly meeting.

Pedigree Chart

2 Harry Adolph LAZARUS-159

B: 26 Jun 1896
P: New Orleans, Orleans, Loui, USA
M: 5 Jul 1919 -- 2
P: St. Louis, St. Louis, Missouri
D: 10 May 1972
P: Shreveport, Caddo, Louisiana, USA

1 Harry Adolph Jr. LAZARUS-1

B: 27 Mar 1920
P: St. Louis, St. Louis, Missouri
M: 25 Mar 1948 -- 1
P: Shreveport, Caddo, Louisiana
D:
P:

Joan Virgi LINXWILER-112

(Spouse of no. 1)

3 Edna Mary WODIKER-170

B: 19 Sep 1899
P: St. Louis, St. Louis, Missouri, USA
D: 1 Mar 1988
P: Shreveport, Caddo, Louisiana, USA

4 Solomon LAZARUS-35

B: 3 Oct 1851
P: Whitechapel, Middlesex, England
M: 16 Jun 1875 -- 27
P: Williamsburg, L., New York, USA
D: 15 Jul 1926
P: Brooklyn, Kings Coun, New York

5 Flora PYKE-46

B: 1854
P: Manchester, Bristol, England
D: 22 Dec 1899
P: New Orleans, Orleans, Loui, USA

6 Matthew Ch WODIKER-192

B: 24 Feb 1873
P: St. Louis, St. Louis, Missouri, USA
M: 5 Dec 1895 -- 3
P: St. Louis, St. Louis, Missouri, USA
D: 18 Aug 1946
P: Cape Girardeau, Cape Gira, USA

7 Mary Edna CADRAN-203

B: 10 Sep 1876
P: St. Louis, St. Louis, Missouri, USA
D: 9 Mar 1965
P: Houston, Harris, Texas, USA

8 Isaac LAZARUS-124

B: Abt 1831
P: ,,, England
M: Abt 1850 -- 28
P: ,,, England
D: Aft 1851
P: ,,, England

10 George PYKE-140

B: Abt 1822
P: ,,, England?
M: 27 Apr 1849 -- 35
P: Bristol, England?
D: 6 Mar 1885
P: Brooklyn, New York

11 Sarah EMDEN-141

B: Abt 1830
P: ,,, England?
D: 19 Apr 1887
P:

12 Wenceslaus VOTLUCKA-142

B: Abt 1850
P: ,,, Bohemia, Czechoslovakia
M: 1872 -- 78
P: St. Louis, Missouri
D: Aft 1910
P: St. Louis, Missouri

13 Caroline POLIVKA-143

B: Abt 1852
P: St. Louis, Missouri
D: Aft 1887
P: St. Louis, Missouri

14 Julius (Jules) CADRAN-130

B: 15 Jul 1845
P: St. Genevieve, Missouri, USA
M: 14 Aug 1867 -- 73
P: St. Genevieve, Missouri, USA
D: 9 Oct 1918
P: Jefferson City, Missouri, USA

15 Mary Louise GOVORO-131

B: 11 Mar 1847
P: St. Genevieve, Missouri, USA
D: 28 Jul 1922
P: St. Louis, St. Louis, Missouri, USA

16

B:
M:
D:

17

B:
D:

18

B:
M:
D:

19

B:
D:

20

B:
M:
D:

21

B:
D:

22

B:
M:
D:

23

B:
D:

24

Joseph VOTLUCKA-176

B: Abt 1825
M: Abt 1850 -- 79
D:

25

B:
D:

26

Joseph POLIVKA-144

B: Bef 1830
M: Abt 1850 -- 80
D: Abt 1858

27

Barbara -145

B: Abt 1830
D:

28

Lawrence CADRAN-146

B: Abt 1825
M: 17 Feb 1842 -- 74
D: Aft 1845

29

Marie GRENIER-147

B: Abt 1825
D: Aft 16 Jul 1845

30

Anto GOVORO(GOVORO)-138

B: 26 Dec 1821
M: 28 Jun 1842 -- 75
D: Aft 1865

31

Marie Louise LAROSE-139

B: 24 Nov 1823
D: May 1877

Prepared by
Harry Lazarus
7709 Tampa Way
Shreveport
LA
USA

Telephone

Date prepared
11 Feb 2003

Ahnentafel Chart for Harry Adolph Jr. LAZARUS

First Generation

1. **Harry Adolph Jr. LAZARUS** was born on 27 Mar 1920 in St. Louis, St. Louis, Missouri.
Harry married **Joan Virginia LINXWILER** daughter of Isaac Webster LINXWILER and Velda Mai ELLIS on 25 Mar 1948 in Shreveport, Caddo, Louisiana. Joan was born on 15 Sep 1927 in Shreveport, Caddo, Louisiana.

Second Generation

2. **Harry Adolph LAZARUS** was born on 26 Jun 1896 in New Orleans, Orleans, Louisiana, USA. He died on 10 May 1972 in Shreveport, Caddo, Louisiana, USA. He was buried on 12 May 1972 in Shreveport, Caddo, Louisiana, USA. He married Edna Mary WODIKER on 5 Jul 1919 in St. Louis, St. Louis, Missouri.
3. **Edna Mary WODIKER** was born on 19 Sep 1899 in St. Louis, St. Louis, Missouri, USA. She died on 1 Mar 1988 in Shreveport, Caddo, Louisiana, USA. She was buried on 3 Mar 1988 in Shreveport, Caddo, Louisiana, USA.

Third Generation

4. **Solomon LAZARUS** was born on 3 Oct 1851 in Whitechapel, Middlesex, England. He died on 15 Jul 1926 in Brooklyn, Kings County, New York. He was buried on 18 Jul 1926 in New Orleans, Orleans, Louisiana, USA. He married Flora PYKE on 16 Jun 1875 in Williamsburg, LI, Kings County, New York, USA.
5. **Flora PYKE** was born in 1854 in Manchester, Bristol, England. She died on 22 Dec 1899 in New Orleans, Orleans, Louisiana, USA. She was buried on 24 Dec 1899 in New Orleans, Orleans, Louisiana, USA.
6. **Matthew Charles WODIKER** was born on 24 Feb 1873 in St. Louis, St. Louis, Missouri, USA. He died on 18 Aug 1946 in Cape Girardeau, Cape Girardeau, Missouri, USA. He was buried on 20 Aug 1946 in St. Louis, St. Louis, Missouri, USA. He married Mary Edna CADRAN on 5 Dec 1895 in St. Louis, St. Louis, Missouri, USA.
7. **Mary Edna CADRAN** was born on 10 Sep 1876 in St. Louis, St. Louis, Missouri, USA. She died on 9 Mar 1965 in Houston, Harris, Texas, USA. She was buried on 12 Mar 1965 in Shreveport, Caddo, Louisiana, USA.

Fourth Generation

8. **Isaac LAZARUS** was born about 1831 in , , , England. He died after 1851 in , , , England. He married Amelia SIMMONS about 1850 in , , , England.
9. **Amelia SIMMONS** was born about 1831 in , , , England. She died after 1860 in , , , England.
10. **George PYKE** was born about 1822 in , , , England?. He died on 6 Mar 1885 in Brooklyn, New York. He married Sarah EMDEN on 27 Apr 1849 in Bristol, England?.
11. **Sarah EMDEN** was born about 1830 in , , , England?. She died on 19 Apr 1887.
12. **Wenceslaus VOTLUCKA** was born about 1850 in , , Bohemia, Czechoslovakia. He died after 1910 in St Louis, Missouri. He married Caroline POLIVKA in 1872 in St Louis, Missouri.
13. **Caroline POLIVKA** was born about 1852 in St Louis, Missouri. She died after 1887 in St Louis, Missouri.
14. **Julius (Jules) CADRAN** was born on 15 Jul 1845 in St Geneieve, Missouri, USA. He died on 9 Oct 1918 in Jefferson City, Missouri, USA. He married Mary Louise GOVORO on 14 Aug 1867 in St Genevieve, Missouri, USA.
15. **Mary Louise GOVORO** was born on 11 Mar 1847 in St Genevieve, Missouri, USA. She died on 28 Jul 1922 in St Louis, St Louis, Missouri, USA.

Fifth Generation

24. **Joseph VOTLUCKA** was born about 1825 in Hrozanek, Bohemia. He was married about 1850.
26. **Joseph POLIVKA** was born before 1830 in Bohemia, Czechoslovakia. He died about 1858 in St Louis, Missouri. He married Barbara about 1850.
27. **Barbara** was born about 1830.
28. **Lawrence CADRAN** was born about 1825. He died after 1845. He married Marie GRENIER on 17 Feb 1842.
29. **Marie GRENIER** was born about 1825. She died after 16 Jul 1845.
30. **Antoine(Anton) GOVRO(GOVORO)** was born on 26 Dec 1821 in St Geneieve, Missouri. He died after 1865 in St Geneieve, Missouri. He married Marie Louise LAROSE on 28 Jun 1842 in St Genevieve, Missouri.
31. **Marie Louise LAROSE** was born on 24 Nov 1823 in St Genevieve, Missouri. She died in May 1877 in Farmington, Missouri.

Confederate Soldiers

Who Died At The Confederate General Hospital

In Shreveport, Louisiana [1864 - 1865]

(Most of these soldiers are buried in unmarked graves in Greenwood Cemetery, Shreveport, LA)

Information Provided by Joe E. Slattery, Library Specialist (Broadmoor Branch Library)

Name	Company	Infantry	Died
Adams, Aaron	Company E	3rd Louisiana Infantry	November 1, 1864
Adire, Green	Company C	29th Arkansas Infantry	April 12, 1865
Allen, J. W.	Company C	Trans-Mississippi Cavalry	July 7, 1865
Anthony, J.	Company A	17th Texas Infantry	February 15, 1865
Arthur, Thomas M.	Company D	Crescent Regiment Louisiana	May 7, 1865
Bailey, John	Company C	Crescent Regiment Louisiana	February 6, 1865
Bartlet, Luther	Company C	8th Missouri	May 5, 1865
Beyer (or Byer), F.	Company C	175th New York	August 1, 1864
Bishop, S. B.	Company A	13th Texas	March 26, 1865
Brandeth, F.	Company I	Crescent Regiment Louisiana	July 16, 1864
Brazil, Robert C.	Company K	33rd Arkansas Infantry	April 3, 1865
Brazil, W. S.	Company L	Crescent Regiment Louisiana	August 1, 1864
Butler, B.		30th Main	September 29, 1864
Butler, T. R.	Company F	3rd Louisiana Infantry	February 10, 1865
Callagham, H. D. O.		Quartermaster Department	March 22, 1865
Camp, E. C.	Conscript		October 11, 1864
Camp, F. M.		Engineering Corps	May 31, 1865
Campbell, James		Quartermaster Department	August 20, 1864
Canterbery, R. S.	Company C	Trans-Mississippi Cavalry	March 18, 1865
Cantly, A. J.		3rd Arkansas	April 17, 1865
Cary, Rufus	Dawson's	Dawson's (Louisiana Cavalry?)	Apr. 28 (or May 10), 1865
Clark, C. B.	Conscript		June 13, 1864
Clark, Macajal G.	Company C	28th Louisiana Infantry	March 21, 1865
Clay, Henry	Company D	10th Missouri	April 27, 1865
Clewell, Joseph	Company G	47th Pennsylvania	June 18, 1864
Coghlin, J.		Federal Prisoner	March 22, 1865
Cooper, Constantine	Company H	8th Missouri	April 19, 1865
Cooper, William	Company E	26th Arkansas	April 9, 1865
Coyle, H.		Davis'	October 26, 1864

Name	Company	Infantry	Died
Crayton, Alexander			September 3, 1864
Crozier, J. L.	Company C	8th Missouri	June 4, 1864
Crump, J. F.	Company C & F	13th LA Battalion Partisans	May 4, 1865
DeCota, D.	Gould's Battalion	6th Battle Texas Cavalry	March 1, 1865
DeMoss, David	Company F	33rd Arkansas Infantry	March 29, 1865
Draper, J. M.		19th Texas	May 28, 1865
Dubrock, J. R.	Company L	Crescent Regiment Louisiana	August 6, 1864
Durio, Jean Baptiste	Company A	18th Louisiana Infantry	December 29, 1864
Dutton, G. W.	Company E	3rd Louisiana Infantry	October 30, 1864
Esset, G.	Company D	38th Main	May 30, 1864
Ethridge, J. M.	Company C	Crescent Regiment Louisiana	August 31, 1864
Evers, R. J.		Harrison's Battalion (Texas?)	August 30, 1864
Fernburger, W.		Ordnance Department	July 31, 1864
Fitzgerald, P. K.	Edgar's Company	Texas Light Artillery	August 4, 1864
Flanagan, Daniel	Company 7	3rd Consol. Arkansas Inf.	April 2, 1865
Flowers, J. F.	Company F	11th Texas	April 30, 1865
Fontenot, F. (or T.)		8th LA Battalion Heavy Artillery	April 15, 1865
Gallien, A.	Company G	3rd Louisiana Infantry	October 23, 1864
Garvin, Isaac W.	Company F	Searcy's Battalion Missouri	April 7, 1865
Gibson, A.	Company A	3rd Louisiana Infantry	February 23, 1865
Gilkey, Thomas	Company B	33rd Arkansas Infantry	April 17, 1865
Goldman, William	Company C	13th Texas	March 18, 1865
Granthamb, G. M.		Smith's Battalion (or Battery Texas?)	September 2, 1864
Guidry, Ernest	Company P	Crescent Regiment Louisiana	January 24, 1865
Haley, Thomas	Company B	Chism's Dismounted TX Cav.	February 28, 1865
Hall, Albert G.		Searcy's Battalion Missouri	April 23, 1865
Hamner, William	Company E	26th Arkansas Infantry	April 10, 1865
Harbison, G. B.	Company G	33rd Arkansas Infantry	March 29, 1865
Harring, A. B.	Company D	19th Texas	February 28, 1865
Hiddleston, R. F.	Company E	16th Missouri	May 16, 1865
Hill, Elizah	Company C	11th Texas	March 4, 1865
Hipps, Josiah W.	Company A	Morgan's Reg. TX Cavalry	April 19, 1865
Hodge, John	Company I	34th Arkansas Infantry	April 29, 1865
Home, J. H.		Pratt's Battery (or Battalion) TX	April 17, 1865
Hulster, William	Company E	2nd Missouri Artillery	May 1865

Name	Company	Infantry	Died
Jackson, William	Company G	14th Texas	February 6, 1865
James, R. J.	Company K	Crescent Regiment Louisiana	February 11, 1865
Jarvis, J. F.	Company A	4th Louisiana Cavalry	July 16, 1865
Johnson, C.	Company D	90th New York	June 1, 1864
Johnson, J.	Company E	3rd Louisiana Infantry	February 15, 1865
Jones, A. J.	Company K	17th Texas	February 22, 1865
Journett, J. B.	Company L	Crescent Regiment Louisiana	August 21, 1864
Justamend, L. W.	Company C	Crescent Regiment Louisiana	August 12, 1864
Kelley, William	Company C	30th Main	June 22, 1864
Killingsworth, Elisha	Company E	34th Arkansas Infantry	April 24, 1865
King, J. W.	Company B	8th Texas	April 10, 1865
Lafitte (or Lefytte) V.	Company B	Crescent Regiment Louisiana	July 13, 1865
Lamb, John	Company B	17th Texas	March 20, 1865
Laurance, Henry J.	Company E	28th Louisiana Infantry	October 3, 1864
Lawrence, A.	Company D	3rd Louisiana Infantry	March 31, 1865
Lawrence, Jonathan		Conscript	May 12, 1865
Leatherman, D.	Company D	17th Texas	January 9, 1865
Lee, Jason T. W.	Company 10	3rd Consol. Arkansas Inf.	April 10, 1865
Legge, W. W.		Conscript	June 24, 1865
Leonard, Peter	Edgar's Company	Texas Light Artillery	August 24, 1864
Littleton, Noah	Company A	Crescent Regiment Louisiana	September 5, 1864
Long, J. T.	Company E	11th Texas	March 17, 1865
Lowry, P. D.	Company D	Crescent Regiment Louisiana	March 23, 1865
Lythe, J. J.		Conscript	May 1, 1865
MaGee, Wilson	Company H	4th Kansas	May 25, 1864
Malone, Jacob		16th Texas	March 3, 1865
Marks, A. L.	Company K	28th Louisiana Infantry	January 22, 1865
McAdams, Thomas	Company A	Zacharie's Battalion	May 24, 1865
McCall, J. A.	Company D	29th Arkansas Infantry	April 15, 1865
McCormack, Joseph		1st Trans-MS Cavalry Battalion	March 17, 1865
McGavin, A. L.	Company B	9th Missouri	April 3, 1865
Mervin (or Murvon), Peter	Company A	Crescent Regiment Louisiana	September 1, 1864
Miller, G.	Company E	74th New York	June 26, 1864
Millican, A. L.		Quartermaster Department	June 10, 1865
Mixen, J. W.	Company A	1st Trans-MS Cavalry Battalion	January 6, 1865

Name	Company	Infantry	Died
Moore, Thomas	Company O	Crescent Regiment Louisiana	August 20, 1864
Mott, John	Montgomery's Co.		October 22, 1864
Murrill, A. P.	Company F	1st New Hampshire Cavalry	September 29, 1864
Myers, W. S.	Company E	3rd Louisiana Infantry	October 13, 1864
Myley (or Myler), W. S.		Conscript	October 23, 1864
Nelson, George S.	Company B	2nd Louisiana Cavalry	April 15, 1865
Newgent (or Nugent), James	Company F	28th Texas Cavalry	March 17, 1865
Nichols, T.		1st Louisiana Cavalry	October 28, 1864
O'Neal, Edward		Madison's Light Battal., LA Artillery	March 6, 1865
Orear, John	Company D	Perkin's	April 15, 1865
O'Reilly, J. S.	Company J	Terril's	May 31, 1865
Owens, Jacob	Company H	2nd Arkansas	April 6, 1865
Peak (or Peake), John	Company B	8th Texas	April 9 (or 15), 1865
Pelt, John	Company 6	3rd Consol. Arkansas Inf.	May 2, 1865
Philips, Henry G	Company B	Crescent Regiment Louisiana	March 3, 1865
Pitman, A. B.		28th Texas	August 2, 1864
Raburn, L.		19th Texas	April 30, 1865
Rachal, F.		Crescent Regiment Louisiana	August 27, 1864
Raisen?, P.	Company L	Crescent Regiment Louisiana	August 4, 1864
Ramsey, Henry	Company M	13th Illinois	October 10, 1864
Reding, G.	Company B	16th Texas	February 21, 1865
Richmond, R.	Company H	4th Louisiana Cavalry	November 26, 1864
Ritchie, David		2nd Arkansas	April 4, 1865
Rogers, W. W.	Company E	31st Texas	April 21, 1865
Rose, J. M.	Company B	36th Indiana	May 23, 1864
Ryan, John	Company D	22nd Texas	February 18, 1865
Saliers, Archibald	Company G	27th Arkansas	March 30, 1865
Salmon, James	Company C	Morgan's Reg. TX Cavalry	November 19, 1864
Sanchez, George		Winchester's Battary (or Battalion)	April 20, 1865
Sanders, E. B.		3rd Battery (Benton's) LA Light Artil.	January 1, 1865
Selby, John H.	Company H	16th Texas Dismounted Cavalry	January 7, 1865
Sherbett, James A.	Company E	28th Louisiana Infantry	March 28, 1865
Smith, J. W.	Company B	15th Texas	June 1, 1865
Snow, J. H.	Company J	31st Texas	September 9, 1864
Sparks, E.	Compnay E	17th Texas	March 22, 1865

Name	Company	Infantry	Died
Spates, Willis	Company C	14th Texas	May 8, 1865
Spears (or Spear), H. F.	Company J	18th Texas	June 13, 1865
Spencer, William	Company C	Crescent Regiment Louisiana	July 24, 1864
Stallings, Solomon L.	Company A	8th Texas	March 5, 1865
Stell, John	Company 2	2nd Arkansas	April 13, 1865
Sterling, James (or Joseph)	Company E	3rd Louisiana Infantry	October 23, 1864
Strychland, Thomas W.	Company H	19th Texas	February 27, 1865
Stuart, John		Federal Prisoner	January 7, 1865
Sutton, George		Federal Prisoner	October 2, 1864
Terrant, E. B.		Harrison's Battalion (Texas?)	October 29, 1864
Thomas, J. W.	Kirby's Company	3rd Texas Infantry Battalion	July 1, 1865
Tracy, William	Company E	28th Texas	May 15, 1865
Uzee, Joseph	Company E	Crescent Regiment Louisiana	March 22, 1865
Vaughan, D. W.		18th Louisiana Infantry	December 21, 1864
Veness, Louis	Company E	Crescent Regiment Louisiana	May 2, 1865
Vesey, Frank			May 1865
Vesey, F.	Company I	42nd Massachusetts	May 2, 1864
Walker, J. J.	Company G	16th Texas	January 15, 1865
Wallace, G. A.	Company A	16th Texas	September 29, 1864
Wallace, J. W.	Company C	18th Texas	February 7, 1865
Warren, Thomas	Company F	Searcy's Battalion Missouri	May 8, 1865
Watts, W. G. B.	Company E	19th Texas	February 11, 1865
Weems, J. J.		Reserve Corps Cavalry	January 19, 1865
Welch, R.	Company L	Crescent Regiment Louisiana	July 10, 1864
Welch, W. G.	Company L	Crescent Regiment Louisiana	July 10, 1864
White, D.		1st Louisiana Cavalry	April 15, 1865
White, H. C.	Company D	34th Arkansas Infantry	April 6, 1865
Williams, A.	Company D	22nd Texas Cavalry	January 19, 1865
Williams, Thomas J.	Company 2	2nd Consol. Arkansas Infantry	March 24, 1865
Williamson, J. N.	Company I	27th Louisiana Infantry	August 11, 1864
Works, Sam		3rd Iowa	June 10, 1864
Young, D.	Company E	1st Louisiana Cavalry	May 4, 1865

A FAMILY REUNION AND CELEBRATION **(ALL DESCENDANTS OF ARMAND ALLARD DUPLANTIER)**

A Family Reunion and Celebration of Armand Duplantier's 250th birthday will be held Saturday, June 28, 2003, at Magnolia Mound Plantation in Baton Rouge, LA. All descendants of Armand Duplantier are invited to attend.

If you are a descendant of Armand Duplantier, please mail or e-mail your name, address, phone number and e-mail address to Margo Duplantier Rhinehart, 712 Carondelet Street, Mandeville, LA 70488, e-mail: Margo92802@aol.com. We would also like to have the names and addresses of any other descendants you might know. If possible, please let us know how you are descendant.

Some of the other family names descended from Armand are: Favrot, Peniston, Reynaud, Toca, Hatkinson, Fortin, Laquier, Aucoin, Meffre-Rouzan, Kleinpeter, Burke, Randolph, D'Armond, Hathorn, Noland, Lamon, and others. If you think you might be a descendant but aren't sure, let us know and we will try to help find our.

We will put you on our mailing list for this exciting event, and further information will be sent out soon. In the meantime, please visit our website at www.duplantier.org.

A Helpful Tip

Colored Paper and Microfilm

Submitter by Beth Manchester (Ancestry.com)

You might try this when reading a microfilm and you just can't quite make out what it says. If the background is "murky," try putting a piece of colored paper on the viewing surface. The paper filters out the murkiness and enhances the images. Surprisingly, this often works very well. Light gray and light blue seem to work best, but other colors to try would be bright pink and bright yellow. You never know what might work with your particular microfilm, so don't be afraid to experiment.

You might start including a few sheets of colored paper in your briefcase or notebook when you visit libraries, archives, etc. to be used for this purpose. There is nothing worse than having a microfilm that you can't read!

For a printer-friendly version of this quick tip and others, just go to:
<http://www.ancestry.com/rd/prodredir.asp?sourceid=831&key=A643802>

Good luck!!

Selected Marriage Records
Morehouse Parish, Louisiana
1870 - 1925
by Isabelle Woods

GROOM	YEAR	BOOK	PAGE	BRIDE
Acorns, Jack	1896	J	426	Woods, Hattie
Alford, Haze	1897	K	42	Bonds, Bettie
Allen, Alford	1880	D	471	Haynes, Cassie
Anderson, Sy	1902	12	285	Woods, Annica
Barnes, C. R.	1899	K	599	Hatfield, Mary
Barnes, Conway	1872	A	179	Crawford, Ellen
Barnes, Ellen	1898	K	295	Pitman, Annie
Barnes, Elroy	1901	11	515	Gardner, Polly
Barnes, Henderson	1892	I	214	Cole, Liddie
Barnes, Henry	1877	C	325	Thompson, Nicie
Barnes, P. B.	1895	J	289	Wines, Creacy
Barnes, Ples	1898	K	277	Scott, Jennie
Barnes, Rhoon	1870	A	40	Dantzler, Nancy
Barnes, Steve	1888	G	392	Lemon, Pennie
Barron, E. B.	1885	F	187	Dantzler, Virginia
Bell, Charlie	1878	D	47	Wood, Nancy
Bell, Henry William	1900	11	155	Haynes, Nettie
Blair, J. W.	1885	F	360	Woods, Fannie E.
Bonds, John	1877	C	311	Williams, Lucy
Bonds, Oscar	1892	I	92	Gardner, Willie
Bowman, Adam	1895	J	306	Barnes, Catherine
Bowman, Phil	1886	G	26	Woods, May
Boyd, Blunt	1883	E	322	Wood, Hannah
Boyd, General	1886	G	16	Causey, Annie
Brown, Burrell	1895	J	176	Barnes, Clara
Brown, William	1893	I	409	Wood, Emma
Caldwell, Henry	1892	I	177	Wheelington, Ophelia
Callian, Irbin	1894	J	139	Haynes, Elnora
Callion, Jr., Ed	1888	G	291	Haynes, Georgia
Callion, Major	1897	K	40	Sweat, Rosa
Cannon, J. M.	1885	F	207	Haynes, Lizzie
Cargile, Eugene	1895	J	215	Dallas, Talitha
Carr, Anderson	1891	H	414	Barnes, Annie
Carson, Ed	1900	11	409	Haynes, Mandy
Causey, Andrews	1886	F	443	Williams, Mary
Causey, Ben	1902	12	339	Watt, Celie

GROOM	YEAR	BOOK	PAGE	BRIDE
Causey, Charlie	1876	C	103	Williams, Caroline
Causey, Dave	1892	I	143	Williams, Lurenia
Causey, Dave	1909	15	474	Haynes, Callie
Causey, Henderson	1892	I	120	Watt, Laura
Causey, William	1902	12	227	Walker, Bertha
Chambers, Abe	1896	J	395	Byrd, Mollie
Coal, Alexander	1871	A	127	Barnes, Mary
Coleman, Henry	1874	A	315	Robinson, Sallie
Coleman, Joseph	1881	E	50	Bartee, Rosa
Coleman, Monroe	1880	D	424	Stevenson, Anna
Coleman, Monroe	1880	D	346	Stinson, Anna
Coleman, Sam	1885	F	273	Harris, Frances
Coleman, Tom	1884	F	92	Rodney, Lizzie
Conway, Warren	1901	11	578	Wood, Dealie
Dantzler, Abe	1874	A	316	Penny, Melissa
Dantzler, Alex	1895	J	216	Nicholson, Virginia
Dantzler, Dudley	1888	G	374	Wilson, Lizzie
Dantzler, N. A.	1893	I	420	Andrews, Mrs. Mary
Davis, B. N.	1886	G	51	Woods, Mrs. Maggie
Day, James	1870	A	51	Georgiana McGinty
Day, Marshall	1881	E	119	Hammil, Estelle
Day, Will	1894	J	83	McKee, Essaline
Day, William	1894	J	48	Cain, Dora
Denton, Alfred	1894	J	99	Wood, Dora F.
Dorsey, Charley	1889	H	132	Woods, Sarah Jane
Elms, Silus	1896	J	476	Hayes, Victoria
Ervin, Joe	1879	D	216	Woods, Chaney
Evans, Jim	1889	G	462	Holdman, Mary
Farrar, Louis	1892	I	162	Causey, Amanda
Finley, Sidney	1881	E	162	Haines, Isabella
Folt (Fort), Sam	1876	C	109	Peters, Celey
Ford, J. C.	1877	C	326	Calvart, Mrs. Nancy
Ford, Prince	1873	A	294	Carter, Joycy
Fudge, Alonzo	1905	13	543	McGee, Eleanor
Gardner, Henry	1903	12	606	Barnes, Fannie
Gamer, Johnny	1898	K	288	Wat, Rachel
Gee, Teddie	1903	12	530	Wood, Amanda
Gibson, William	1897	K	87	Barnes, Clarissa
Goodwin, Reily	1912	16	589	Hill, Magdeline
Gosby, Ransom	1900	11	372	McGee, Ruth

GROOM	YEAR	BOOK	PAGE	BRIDE
Green, Squire	1898	K	413	Barnes, Appie
Haines, David	1899	K	500	Sea, Amanda
Haines, Richard	1882	E	193	Strawther, Callie
Haines, William	1883	E	409	Gordon, Nancy
Halman, James M.	1877	C	284	Moore, Celia A.
Hamlin, Mitchell	1900	11	199	Wilson, Charletta
Harris, Ed	1922	21	116	McGhee, Laura
Harrison, Jack	1879	D	221	Woods, Ella
Hayes, Squire	1889	G	512	Brown, Laura
Haynes, David	1895	J	205	Coleman, Sallie
Haynes, Floyd	1886	F	436	Dumas, Mattie
Haynes, Jr., Frank	1882	E	256	Waite, Sallie
Haynes, George	1870	A	13	Lewis, Nancy
Haynes, John	1885	F	210	Dantzler, Charlotte
Haynes, Julius	1885	F	214	Williams, Victoria
Haynes, George	1889	G	504	Parker, Lillie
Haynes, Robert	1899	11	96	Young, Ida
Haynes, Reuben	1877	C	301	Mayo, Malmda
Haynes, T. J.	1898	K	335	Blanks, Althea
Haynes, William	1893	I	462	Miller, Sarah
Haynes, Willie	1897	K	100	Mason, Janie
Hays, Irvin	1897	K	252	Givens, Mamie
Hays, Lee P.	1884	F	81	Simms, Lelia
Hill, Horace	1890	H	212	Lambert, Julia
Holdman, John	1894	I	497	Littleton, Lucy
Hollman, Jack	1883	E	488	Burklin, Alice
Hollman, Jack	1891	H	453	Parker, Eliza
Hollman, Jacob	1884	F	88	Hall, Alice
Hollman, William	1885	F	329	Turner, Mary
Holman, Cleveland	1918	19	93	McGhee, Hollie
Holman, Ed	1895	J	154	Causey, Mary Ann
Holman, Jack	1900	11	110	Brooks, Ella
Holman, Newsom	1896	J	467	Barnes, Manerva
Hunter, Jessie	1881	E	133	Wood, Caroline
Jackson, Reuben	1899	K	526	Haynes, Anna
Jemmison, Canida	1889	H	453	Haynes, Mandy
Jenkins, Alvin	1884	F	118	Haynes, Celia
Johnson, Burrell	1905	13	622	Haynes, Anna
Johnson, Charley	1880	D	392	McGee, Eleanor
Kelley, Henry	1892	I	201	Causey, Maggie

GROOM	YEAR	BOOK	PAGE	BRIDE
Key, Leonard	1907	14	566	Causey, Cammie
Kinderman, Will	1905	13	521	Haynes, Mary
Knox, L. S.	1902	12	246	Haynes, Rachael
Lacy, G. W.	1902	12	119	Causey, Ella Eugene
Lewis, Miles	1901	12	14	Woods, Mollie
Matheney, Dock	1897	K	209	Harris, Sarah
Matheney, Jim	1892	I	268	Haynes, Laura
Mayo, Henry	1890	H	330	Haynes, Malinda
McGee, Adolphus	1880	D	374	Robert, Bettie
McKnight, William	1904	13	30	McGee, Nancy Smith
McNeill, John	1888	G	285	Causey, Dora
Miller, Adam	1887	G	97	Bond, Willie
Nichols, Ashbury	1890	H	226	Haynes, Sallie
Nichols, Charlie	1891	H	495	Haynes, Emma
Parham, Jr., Tom	1892	I	122	Haynes, Jane
Parker, George	1895	J	262	Wheelington, Battle
Parsons, Dave	1897	K	179	Bond, Frances
Penny, Monroe	1884	F	127	Robinson, Ella
Peters, Hiram	1884	F	60	Causey, Fannie
Quillar, Ishmael	1909	15	508	McGee, Dora
Radford, Tom	1883	E	331	Bonds, Mary Eliza
Reese, Tome	1891	I	74	Bonds, Eliza
Rhodes, Charlie	1925	22	247	Matheney, Hattie
Richmond, Seymour	1885	F	373	Hunter, Mahalia
Robinson, General	1884	E	498	Hamlin, Lucinda
Rucker, Henry	1894	J	2	Holman, Lelia Ann
Sanders, Tommie	1887	G	261	Hammil, Julia H.
Savannah, Sam	1896	J	408	Haynes, May
Seay, Frank	1888	G	281	Hegwood, Amanda
Seay, William	1889	G	479	Williams, Mary Ella
Somville, Alex	1874	A	355	Richart, Sarah
Soweil, John	1885	F	246	Haynes, Hulda
Stevens, Ezekiel	1889	H	80	McQuire, Rosa M.
Summerville, Alex	1874	A	355	Richart, Sarah
Summerville, Jeff	1879	D	252	McEnery, Susan
Summerville, John	1879	D	100	Howard, Patience
Summerville, Peter	1891	H	427	Thompson, Laura
Taylor, James	1900	11	124	McGee, Minerva
Templeton, G. T.	1900	11	231	McGee, Annie
Thomas, James	1901	11	513	Barnes, Patsy

GROOM	YEAR	BOOK	PAGE	BRIDE
Tyas, John	1900	11	153	Haynes, Ella
Vaughan, Jessie H.	1911	16	328	McKee, Mildred
Ware, Randall	1885	F	340	Haynes, Ellen
Watt, George	1891	H	423	Haynes, Ilcy
Watt, Julius	1885	F	296	Holdman, Mary
Wheelington, John	1900	11	299	Ragsdale, Prudie
Whitney, Henry	1877	C	312	Barnes, S. A.
Williams, Anthony	1873	A	223	Barnes, Mollie
Williams, George	1870	A	55	Bonds, Nancy
Williams, Henry	1887	G	266	Barnes, Sallie
Williams, John A.	1883	E	447	Haines, Alice
Williams, Julius	1871	A	129	Summerville, Abby
Wilson, Frank	1890	H	364	Haynes, Le Anna
Woods, Charley	1902	12	202	Johnson, Eliza
Woods, Charlie	1904	13	145	Winlock, Eleanora
Woods, Dolph	1906	14	247	Sallie Wheelington
Woods, Clarence	1881	D	496	Fletcher, Alice
Woods, Harry	1883	E	419	Toney, Anarchie

Submission to The Genie

"Material for the Genie is always appreciated"

The Publication Staff of *The Genie* is always looking for articles about genealogy. We are especially interested in articles concerning the Ark-La-Tex area. Since our publication is mailed to other genealogical organizations we need to keep our articles mainly about this area, however, we do occasionally accept articles on other areas. Hard copies only, no computer discs will be accepted. When submitting an article that you did not write, please be sure that you either furnish written proof from the author that we can reproduce it or information on how to contact the author. *We must have permission to print all articles.*

Deadline for publication is the 15th of the first month of each quarter. Original articles can be mailed to the editor: **Willie Griffin, P. O. Box 4463, Shreveport, LA 71134-0463**

Or send e-mail to: wraygriffin@netzero.net *Please include your name and phone number.*

Suggested Topics:

Calendar events, local research and resources, genealogical hints, tidbits and trivia, family research, national and international research, on-line research and web sites that you have found helpful.

THE ARNOLD-TIDWELL HOUSE

By Dale Jennings

The old Arnold-Tidwell house is on the south side of Linton Road one-half mile east of Airline Drive, between Bossier City and Benton. The house is believed to have been built between 1850 and 1857 by either Jackson Burnham or Benjamin Walker Burnham. It was constructed of hewn logs with a dogtrot breezeway between the two sets of lower rooms, and a two-room loft overhead. It is one of the few remaining antebellum homes in Bossier Parish.

The home is located in Section 16, Township 19, Range 13. The section 16 of each 36-section township was exempted from the U. S. government public land auction of 1839. These square mile sections were allotted to the parish school districts to produce income to support local public education. In 1850, the Bossier Parish Superintendent oversaw the sale of the east half of this section at public auction. It went to the highest bidder, Jackson Burnham, for \$2,400. Two years later, Jackson bought the west half of Section 21, which touched Section 16 at their corners, and sold his Section 16 acreage to Benjamin Burnham. The Burnhams, who were brothers, were both shown to be thirty-one years of age in the 1850 census. Jackson was a married Bossier planter and Benjamin a single overseer. In an exchange of land for slaves, Benjamin obtained the 320-acre Section 16 tract from Jackson in trade for thirteen slaves. The conveyance makes no mention of improvements.

Benjamin Burnham prospered with his plantation, but sold out in January 1857 and moved to Morehouse Parish. With the property went another 120-acre parcel on Black Bayou a mile away in Section 10. Also included were 10 mules, 1 mare with colt, 1 yoke of oxen, 50 head of cattle, about 75 hogs and 17 head of sheep. Included as well were a wagon, millstone, gin stand, 500 bushels of corn, 3,500 pounds of meat, the plantation's implements and tools, and almost all of the household and kitchen furnishings. Sixteen slaves went with the property. The buyer was Doctor James Sandidge who paid \$27,000 for the entire lot. Doctor Sandidge also was the highest bidder that same month in the sale of Jackson Burnham's 320 acres in Section 21. Jackson had died in 1855 and the property was being sold at succession sale to settle the estate.

James Shelton Sandidge was a medical doctor from Alabama, and was loosely related to other early Bossier Parish Sandidges. Whereas the Burnhams had small families, James and his wife, Elizabeth Olivia Wyche Sandidge, had a large family. Doctor Sandidge made one property change during the three years they owned the plantation. Transferred in the Burnham sale was a one-half acre parcel that the Burnhams had purchased jointly in the adjoining Section 15. Doctor Sandidge traded this parcel to his neighbor, Mrs. Matilda Doles, for two acres adjacent to his house site, but in Section 15. This parcel was described as "lying immediately east of the present quarters or house improvements bounded on the west by the east line of said Section Number Sixteen and on the north by what is known as the Bellevue road." This was the "Shreveport and Bellevue Road," now Linton Road. The half-acre that Mrs. Doles wanted contained a gin. The two acres accepted in trade was not shown to have had any improvements, but had, or later would have, a blacksmith shop. Mr. Tom Tidwell, who grew up in the house, told Louis Baker that he remembered as a little boy the farmers east of there leaving their teams and wagons at the black smith shop. They would go on down to nearby Willow Chute Bayou to

take boats to Shreveport. Mr. Tidwell was born in 1880. Willow Chute had been part of the bypass route around the Red River raft and was still navigable.

In 1860 three Arnold men moved with their families from the Newnan area of Coweta County, Georgia, to central Bossier Parish. They were George Washington, Charles Wesley and William James Arnold. William was a nephew of the two brothers. Charles and William made their first of several large land purchases in the area in late 1859. In January 1860, George bought 240 acres on Cypress Bayou that had been secured for him by a nephew, Norman Chappell Ogilvie. Norman was a son of George and Charles' sister, Frances Emily, and the Reverend Artemus Watson Ogilvie, of Newnan, GA. He was one of the eight Ogilvie orphans brought in the mid-1850's from Georgia to nearby Desoto Parish, and divided between their two Ogilvie aunts.

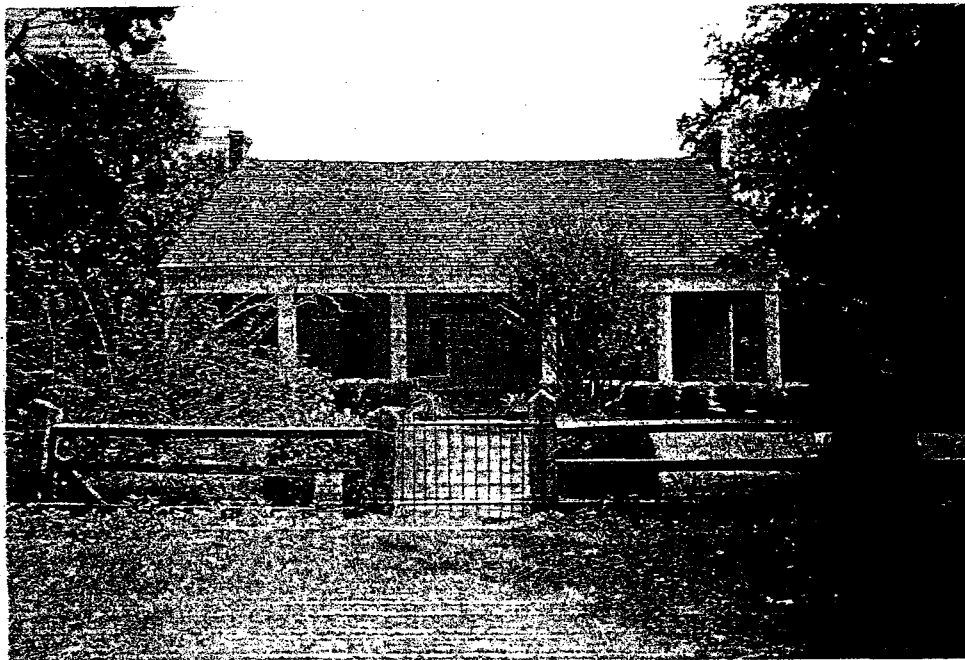
Later that month, George Washington purchased the four Sandidge tracts, to include the "home place" tract and the "Burnham tract" in Section 21. He paid \$37,000 for the 762 acres which included the "corn, fodder, hogs and cattle and whatever else may belong to the plantation now in cultivation on said land except one wagon and six mules." Although not so indicated by the census index, the Arnolds had established households in Bossier Parish in time to be counted in the 1860 census. The enumerator's poor penmanship caused the listings of the three consecutive households to appear as "Arneed." Charles and William had by then moved their families. George had with him only an overseer and 34 slaves, and was listed again with his family in Georgia. He soon had his family moved into the plantation home on Bellevue Road.

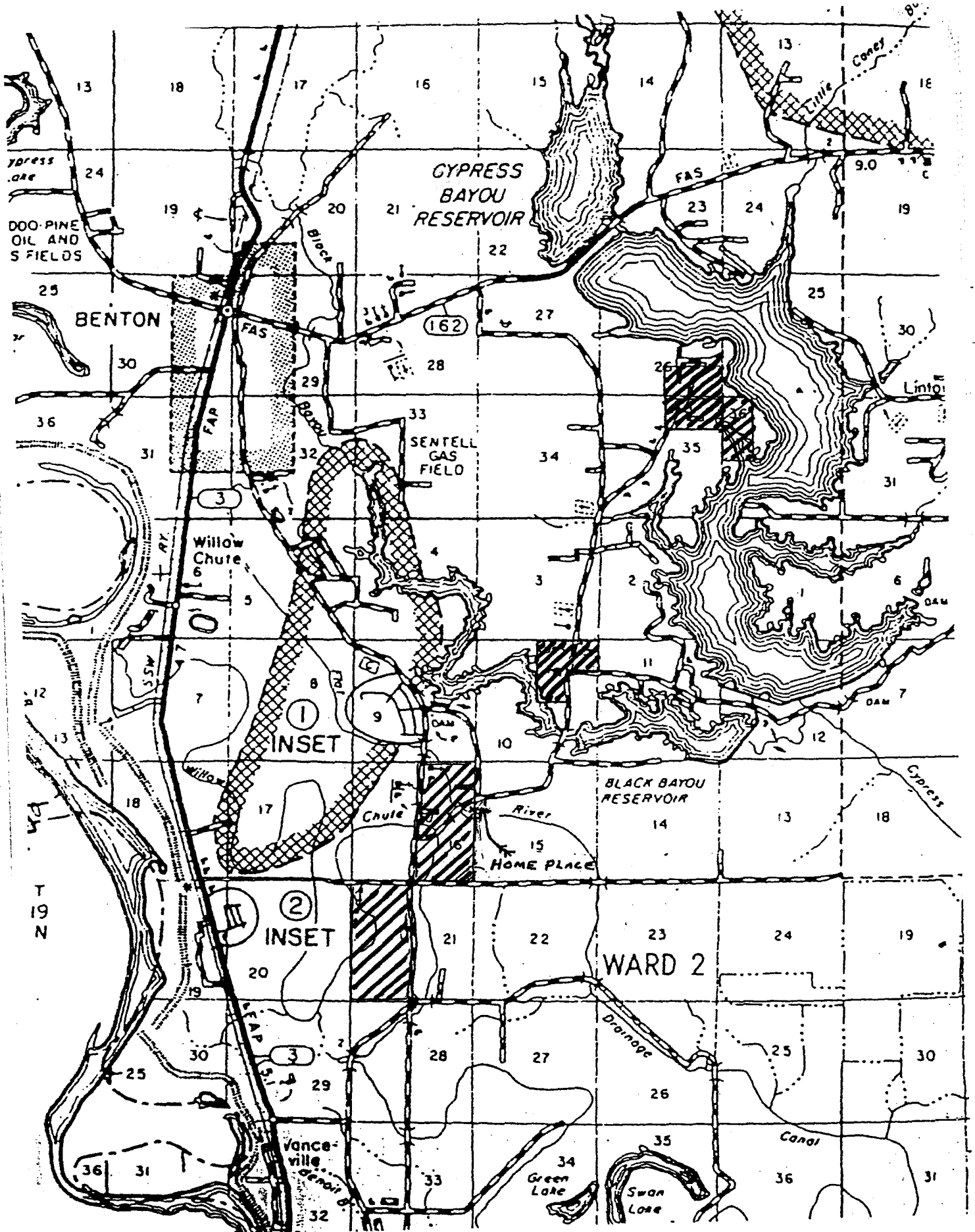
In 1860 G. W. Arnold was 46, and his wife, Salina Catherine Sims Arnold, 38. Their family of five sons and four daughters ranged in age from twenty to one. He is shown by the Georgia census to be worth \$146,000, and by the Louisiana census to be worth \$81,500. He was born in South Carolina and the rest of his family in Georgia. Mr. Arnold had opposed secession, but supported the Confederacy when his new state left the Union. The Arnolds' three oldest sons fought in the war, and one died of illness in Mississippi during the conflict.

The Arnold-Tidwell House is more commonly referred to as "Home Place." This name often evolved from the more generic term used to distinguish a tract containing the residence from other tracts of land. "Miss Larry" Arnold Vance Hunt, great-granddaughter of George Washington Arnold, used to say that she remembered the place being called "Lonesome Hill." Its builder selected this site because it was wooded, on an elevation which provided breezes, and was secure from flooding. The house overlooked and was on the "hill land" side of Flat River, a drainage course, which delineated the area's "hill land" from its "river land." The "home place" and "Burnam" tracts, although miles from Red River, were river plane except for a less than eighty-acre parcel on which the house was located. The river land was very productive for growing cotton, from which planters like the Burnhams, Sandidges and Arnolds prospered.

The Arnold plantation house underwent some significant early changes. The breezeway was closed in and the log exterior was covered with board siding. Rooms were added to the rear of the house. The enlargement to the house may have been made by the Arnolds to accommodate their large family. The home site originally contained many outbuildings and slave cabins.

The oldest Arnold daughter, Emily Frances (Emma), was married after the war to a Georgia Confederate veteran, Mr. William L. Hilton. Mr. Hilton died in 1868. She remarried in January 1871 to Thomas Jefferson Tidwell, a Confederate veteran from Arkansas, who settled in northwest Louisiana after the war. George Washington Arnold died in 1868 and his wife in 1872. The estate was not divided until 1876. Emma received as her share an eighty-two acre parcel in Sections 16 and 15 that included the house. Mr. Tidwell died in 1908. His widow did not remarry, and lived in the house until her death in 1943. Emma was survived by four of her five children; two daughters; Emmett Tidwell Stinson and Sallie Tidwell Bradford, and two sons, Washington S. Tidwell and Thomas A. Tidwell; all of whom inherited equally. Later that year, Thomas Arnold Tidwell in buying out the inherited interests of his siblings, obtained the "Home Place" residence. Thomas had married Clara Britain in December 1930. Mr. Tidwell was a successful farmer, businessman and civic leader. They lived on his nearby Red Chute Plantation, and then at Vanceville, and used the old house as rental property. The Tidwells had no children, and when Tom Tidwell died in 1965, Clara inherited the Arnold-Tidwell House as part of the estate. Clara Tidwell decided to restore the house as her residence in 1967. She remarried to John C. Bryan in November 1967, and when restoration was complete, they took up residence there. She restored the front part of the house to its original state. Most of the furniture is original to the Arnold's time, and three pieces, a cradle, high chair and "six-board" chest, had been brought from Georgia. The rooms added to the back were not of the sturdy log construction and had deteriorated badly. What were then the dining room and kitchen were replaced with the Bryan's modern living quarters. The room in the southeast corner of the original house was made into a functional kitchen. The Bryans elected to dismantle the old raised front porch and replace it with a brick ground-level porch. Bricks used were those taken from an old brick chimney that had collapsed during the renovation of the kitchen. This change in the front profile of the house precluded it being placed on the National Register of Historic Places. Clara made the house available to the public during periodic house tours until her death in 2000.





Huckabay Family Record By Herman L. Weiland

The ALTGA has had some back issues of the GENIE donated back to us over the years and while I was in the process of doing a current inventory of all the GENIE's I found this paper. The label on that GENIE had been removed so I do not know to whom the paper belongs. Owner may claim at regular meeting or by letter.

It has recorded on it the following:

John Huckabay, father, 1795-1800 of Marion Co., GA. d. 1844, Marion Co., GA
Elizabeth Moore, mother, 1795 Wilkes Co., GA. d. 1868, bur. Mt. Olive Cem
near Jamestown, Bienville, LA.

Children:

Emelie T. Huckabay	1817	Wilkes GA. d. abt 1854. m. 4 Mar 1834 John G. Smith
Green Hillier Huckabay	23 Dec 1818	Wilkes GA. d. 20 Sept 1902. m 1837 Delilah Ann Denson
Sarah Jane Huckabay	16 Dec 1820	Wilkes GA. d. 1838-9, m. 1838-9 John Wesley George
John Huckabay		Wilkes GA. d. abt 14 Jul 1851, m. 25 Sept 1842 Unicy L. Jones
Phillip F. Huckabay		Wilkes GA d. 1878, m. 2 Nov 1844 Martha C. Jones
L. Lucinda Huckabay		Wilkes GA. d._____, m. either on 12 Apr or 4 May 1850, Bellington A. Hall
Martha C. Huckabay		Wilkes GA, d._____. m. 10 May 1849 Ezekiel Waller
Mary Huckabay		Wilkes GA, d._____, m Hiram Evans
Christina B. Huckabay		Wilkes GA, named in succession - then no further record.
Susan Matilda Huckabay	17 Apr 1839	Wilkes GA, d. 18 Apr 1923, m. 8 Oct 1856 (1) Thos. Nathaniel Littleton
Francis T. A. Huckabay	27 Dec 1842	Wilkes GA, d. 11 Feb 1929, m. 23 May 1869 Atlas Griffin Hicks

Notes:

John Huckabay, succession and guardianship of children June 1844, Marion Co. .
Emilie T. & Smith md rec. Walton Co. GA
Phillip F. & Martha Jones md. Stewart Co. GA
L.L. Huckabay & B. A. Hall, md. Stewart Co. GA
Francis Temperance Americus Huckabay, full name

Laconia, New Hampshire
City Directory 1925 Including Lakeport and the Weirs
(Laconia is the County Seat of Belknap County)
By Herman L. Weiland

Garage Sales can sometimes produce an interesting item for purchase, this book is one I recently found. It contains, for the year 1925, a General Directory of the Citizens of Laconia, Lakeport and the Weirs, a Classified Business and Street Directory, City Government Officials, Churches, Schools including Teachers, Fire and Police Departments, Clubs, Societies, and Miscellaneous Organizations. There is also included a fold out street map of the area. Information was obtained by an actual door to door canvas. The General Directory contains the name of the person, the spouse, whether they might room or board, occupation, business address and home address.

Population figures are given, for all cities and counties in New Hampshire, for the Census years 1900, 1910 and 1920.

This book was signed inside the front cover by F. W. Fowler, Jan 29, 1925. The information contained therein reveals he is Frederick W. Fowler, his wife was Ruth A., his business address is 480 Main Street, rooms 4 and 5, he is a lawyer and also Judge of the Municipal Court of Laconia, and his residence is 48 Harvard Street.

We will keep this book for several months, before donating it to the Broadmoor Library Genealogy Department, in case any of our readers may have an inquiry about the contents. You may direct those inquiries by mail to the Ark-La-Tex Genealogical Association or by E-Mail to: Herman Weiland at hweiland@bellsouth.net.

Welcome to our New Member

Gail Cox

579 Spring Lake Drive
Shreveport, Louisiana 71106
Phone: (318) 865-5500
Email: gailcox@sport.RR.com
Researching: Beasley: LA, TX & AL
Robbins: LA, TX & AL
Strickland: GA & AL
Hodge: VA & TX

We welcome our new member.
Please help to make her feel at home with us.

Addendum to Star Cemetery, Caddo Parish, Louisiana By Mrs. Isabelle Woods

1535	Amstead	William				1943	67 Yrs
1536	Bailey	Celes		Mrs.		07 Jan 1944	
1537	Benson	Alice	Sneed	Mrs.		09 Nov 1943	59 Yrs
1538	Brown	William		Sr.		1943	
1539	Chew	Margaret		Mrs.	Vol 36, No. 1	10 Apr 1930	86 Yrs.
1540	Clark	Betty	Marie	(Miss)		1943	Infant
1541	Coleman	John				21 Dec 1943	
1542	Coleman	Mariah		Mrs.		01 Dec 1927	
1543	Colquitt					1943	3 Days
1544	Curry	Lucy		Mrs.		1947	
1545	Daniels	Frank				22 Jan 1945	62 Yrs
1546	Davis	Maggie		Mrs.		13 Dec 1943	
1547	Deans	Bessie	Daniels	Mrs.		03 Sep 1930	
1548	Dumore	Rose		Mrs.		19 Jan 1945	
1549	Duncan	Ida	Pugh	Mrs.		16 Jun 1943	22 Yrs
1550	Evans	Georgia		Mrs.		12 Jan 1943	
1551	Evans	Orange		Mr.		1943	38 Yrs
1552	Ford	Willa	Mae	Miss		02 May 1927	
1553	Grace	Hannah		Mrs.	Vol 36, No. 2	26 Jul 1943	
1554	Hanks	Clint				1943	
1555	Harris	Andrew	A.		Vol 36, No. 2	20 Mar 1930	
1556	Harvey	Thelma				13 Dec 1943	
1557	Hawkins	Calvin				28 Dec 1943	80 Yrs
1558	Hawkins	Fannie		Mrs.		20 Dec 1943	
1559	Hill	Robert			Vol 36, No. 2	03 Oct 1943	
1560	Hodges	Samuel				30 Mar 1928	
1561	Horton	Mary		Mrs.		03 Jan 1951	
1562	Jack	Henry				13 Apr 1930	
1563	Jacobs	Joseph			Vol 36, No. 2	02 Nov 1943	67 Yrs
1564	Jewel	McGia		Mrs.		13 Jan 1944	
1565	Johnson	George	Anna	Mrs.		05 Sep 1930	
1566	Johnson	Jennie			Vol 36, No. 2	22 Jun 1943	
1567	Jones	Carrie			Vol 36, No. 2	26 Mar 1947	54 Yrs

Addendum to Star Cemetery, Caddo Parish, Shreveport, LA by Isabelle Woods

In 2002, Star Cemetery was designated an "Historic Site," a project led by Mr. Harry Thomas, Executive Director, Shreveport African-American Multicultural Tourism Committee. On April 8, 2002 Mr. Thomas, Shreveport's Mayor Keith Hightower, Henry Bernstein, General Counsel of the Department of Culture, Recreation, and Tourism, plus other interested civic leaders held a ceremony to dedicate and place an "Historic Site" marker at Star Cemetery.¹

My complete reading of all its headstones facilitated the listing of Star Cemetery on the National Register as a Historic Site.

This addendum of sixty-five results in a total of 1,599 known decedents. An alleged 10,000 decedents are said to be interred in Star Cemetery. Many of *The Shreveport Sun* newspaper's obituaries or cards of thanks on microfilm in the Archives Room of the Southern University Library at

Addendum to Star Cemetery, Caddo Parish, LA

THE GENIE FIRST QUARTER 2003

30

1568	Jones	Rebecca	Flint			19 Feb 1944	
1569	Keys					1943	Infant
1570	Legardy	Rudolph			Vol 36, No. 2	10 Apr 1930	58 Yrs
1571	Lemmons	Essex				31 Mar 1947	62 Yrs
1572	Lewis	Elvie		Miss		1944	
1573	Loyd	Ida		Mrs.		28 Dec 1950	
1574	McDow	C.	Paskal	Jr.	Vol 36, No. 3	31 Dec 1929	
1575	Miles	Susie		Mrs.		31 Jan 1930	
1576	Minor	Carrie	Chew	Mrs.		11 Apr 1930	53 Yrs
1577	Mitchell	Ellen			Vol 36, No. 3	26 Mar 1947	72 Yrs
1578	Mitchell	Johnnie				1943	
1579	Morris	James		Rev.		22 Dec 1943	
1580	Porter	Lana		Mrs.	Vol 36, No. 3	14 Aug 1943	
1581	Redd	John	Arthur			1944	2 Yrs
1582	Redd	Willa	Mae			01 Jul 1944	
1583	Reed	Missouri		Mrs.		1944	
1584	Robinson	John			Vol 36, No. 3	25 Feb 1943	
1585	Sanders	Eddie				1943	4 mos
1586	Sanders	Leola	Levingston	Mrs.		1947	
1587	Scott	Oneal			Vol 36, No. 3	29 Dec 1942	
1588	Sims	Emmett	L.			02 Jan 1944	43 Yrs
1589	Smedler	Alberta		Miss	Vol 36, No. 4	25 May 1943	
1590	Smith	William				18 Oct 1943	74 Yrs
1591	Stills	Julia		Mrs.		26 Dec 1942	
1592	Taylor	Victoria		Mrs.	Vol 36, No. 4	29 Apr 1943	
1593	Tigue	Barney	Clay		Vol 36, No. 4	27 Aug 1943	55 Yrs
1594	Vercher	Esther		Miss		1943	
1595	Wadley	Georgia		Mrs.	Vol 36, No. 4	20 Oct 1943	
1596	Wardlaw	Buster				1944	
1597	Williams	Felix			Vol 36, No. 4	16 Apr 1943	
1598	Williams	Frances		Mrs.		02 Feb 1951	
1599	Willis	S	S	Prof.	Vol 36, No. 4	1943	

Shreveport, LA, do not state the decedents' places of burial.

Column 6 states the references for some of the obituaries of these decedents published in prior issues of *The Genie*. This is my final list of all the names of Star Cemetery's decedents that I have in my possession.

The only other data within my 1,000-plus funeral program collection is of four Star Cemetery decedents: C.B. Smedler (1943), Rebecca Flint Jones (1944), Mrs. Ellen Mitchell (1947), and Birdie L. Bennett (1973)

Happy ancestor hunting!

¹Fricker, Donna, "Shreveport's Star Cemetery Added to National Register," Preservation in Print, May 2002; Louisiana State Historic Preservation Office, Office of Cultural Development, Department of Culture, Recreation and Tourism, P. O. Box 44247, Baton Rouge, LA 70804-4247.

² Woods, Isabelle, "Star Cemetery," *The Journal*, a publication of the Friends of Genealogy, Shreveport, LA; First Quarter 2001, Volume XIII, Number 1, pages 8 and 9.

**WILLOW CHUTE PLANTATION
AND THE COMMUNITY OF WILLOW CHUTE
By Dale Jennings**

Willow Chute was a Pickett plantation. James Belton Pickett, a South Carolina planter and investor, bought thousands of acres on the upper Red River in Louisiana. Most was opposite and above Shreveport, and acquired in the U.S. government public land auction of 1839. Pickett assembled several large plantations in then Claiborne, but soon to be Bossier Parish, before his sudden illness and untimely death in 1842. One was the Willow Chute Plantation just south of the present town of Benton. The plantation took its name from the Willow Chute Bayou, which joined the Red River on the west edge of the plantation. The meandering bayou traversed the lower part of the property, exiting at its southern boundary. The "Great Raft," an historic accumulation of logs and other debris, impeded the flow of the river for some 165 miles. Willow Chute was the natural bypass or diversion channel out of the east side of the river. In 1806, the U.S. government sent a military expedition up the Red to explore that region of its new "Louisiana Purchase." The team was forced to find an alternate water route around the raft. The last leg of their detour, believed to have been up Willow Chute Bayou, brought them back to the river on open water above the head of the raft.

Pickett's plantation was interspersed with several "floats." These were tracts picked by persons who had certain "preemptive rights," and were allowed to select the location of their claims prior to the public land auctions. The warrant held by Knox and Wilson for the northwest quarter of Section 7 was sold to an "assignee," James Pickett. The other float owners took possession of their tracts and were bought out later by Pickett and his widow. After some other transactions to consolidate the property, the river land and adjoining hill land amounted to some 3,000 acres.

The terms, "hill land" and "hills" are misleading. Most of the land in the region that was not alluvial river plain was the broken, thin topsoil-clay, pine and hardwood covered "hill land," that could be farmed, but was ill suited for cotton. The fertile river land, extending for miles back from the river, was poorly drained and easily flooded. The highest elevation between the river and the "hills" was close to the bank. The land drained away from the river, and the bayous flowed from, rather than into it. The river land was adapted to cotton planting by such flood control measures as levees and drainage; the blocking off of the bayous out of the river; and the removal of the Red River raft. The first large land buyers bought hill land with their river land survey tracts, or separately because it was cheap, multi-purpose, and considered a good investment. Most river plantations had hill land – not always attached – that was usually sold with the plantation.

Paulina De Graffenried Pickett remarried two years after the death of James Pickett, to another wealthy Bossier Parish planter, James Blair Gilmer. The marriage ended in divorce in 1856. There were no children from this marriage, but there had been three

from her first. Her daughter Sarah was married to Mr. Robert C. Cummings at age sixteen in 1854, and died of Cholera the following year. The Picketts' two sons were John, born in 1834, and James, Jr., born in 1839.

When John Pickett reached legal age in 1855, he filed to open the succession of his father's estate. He bought several tracts of land from the estate at sheriff's succession sale. His mother Paulina, her husband, and her brother-in-law, George E. Gilmer, also purchased land from the estate. All land purchased was at appraised value, and an accounting was to be made upon final settlement of the estate. Some of the 4,300 acres that Paulina bought included several hundred acres of the Willow Chute hill land. In 1857, Paulina made a final settlement with her sons as administrator of her first husband's estate. Each son was entitled to approximately \$90,000 from his father's succession. John was given the 2,285-acre Hurricane Bluff Plantation, with its livestock, farm equipment and its sixty-seven slaves, having a total value of \$138,045. In accepting this as settlement, John acknowledged that this was much more than his entire interest in his father's succession. James accepted as his settlement the 1,046-acre Gold Point Plantation, with its livestock, equipment and eighty-eight slaves – all valued at \$112,570. His mother was to pay him the sum of \$25,470, to equal his brother's award. She donated to James the Willow Chute Plantation's eighty-four slaves, and allowed him to have the crops made on Willow Chute during the years 1857 and 1858. James Pickett also acknowledged that this settlement far exceeded his entitlement from the succession.

In 1866, Paulina Pickett sold her Cash Point Plantation (obtained after the death of her first husband) to her son James. She sold Willow Chute, two smaller plantations, "Boone Bend" and "Wilderness," and the "Mitchell Lake tract" to John. The Willow Chute Plantation was now described as 1,200 acres. Each was given a half interest in 2,000 acres of hill land adjoining Willow Chute, Paulina's Rough and Ready Plantation and the town of Benton. Some of this would have been Willow Chute hill land. To obtain these properties with all buildings, improvements, cattle, mules, farm equipment, etc., John and James individually signed five promissory notes with their mother; each brother's notes totaling \$100,000. John's purchase was to be effective on January 1, 1867, and the last note was to be paid on January 1, 1872. This must have been a heavy debt to carry in the hard economic times following the war. In January 1871, John filed for bankruptcy in federal district court in Nashville, Tennessee. The bankruptcy officer offered all of John's Bossier Parish property at bankruptcy sale to the highest bidder. James W. Campbell was high bidder on all the properties. He obtained the bankruptcy rights to the 1700-acre Willow Chute Plantation for the consideration of \$10.00, and to the Hurricane Bluff Plantation for \$17.50. James Pickett purchased the rights to Willow Chute from Campbell in January 1873, for \$1,000, and sold the plantation back to his brother John in 1875 for \$30,000. John then bought his Hurricane Bluff Plantation back from Campbell directly and Paulina bought the other properties. One would have to understand bankruptcy proceedings, the responsibilities for debt and other factors, to appreciate the intricacies of these transactions.

In January 1881, William Calvin Vance bought the 2,080-acre Willow Chute from John Pickett for \$25,000, adding that plantation to his two others, Palmetto and Riverside – the three interconnected plantations totaling some 5,000 acres. To underwrite a down payment and two annual notes to Pickett, Calvin signed five promissory notes with his friend and neighbor, congressman Henry Ogden. Ogden accepted as collateral a one-half interest in the plantation. Captain Vance paid off the notes to Pickett in two years and redeemed his other half interest from Ogden the following year.

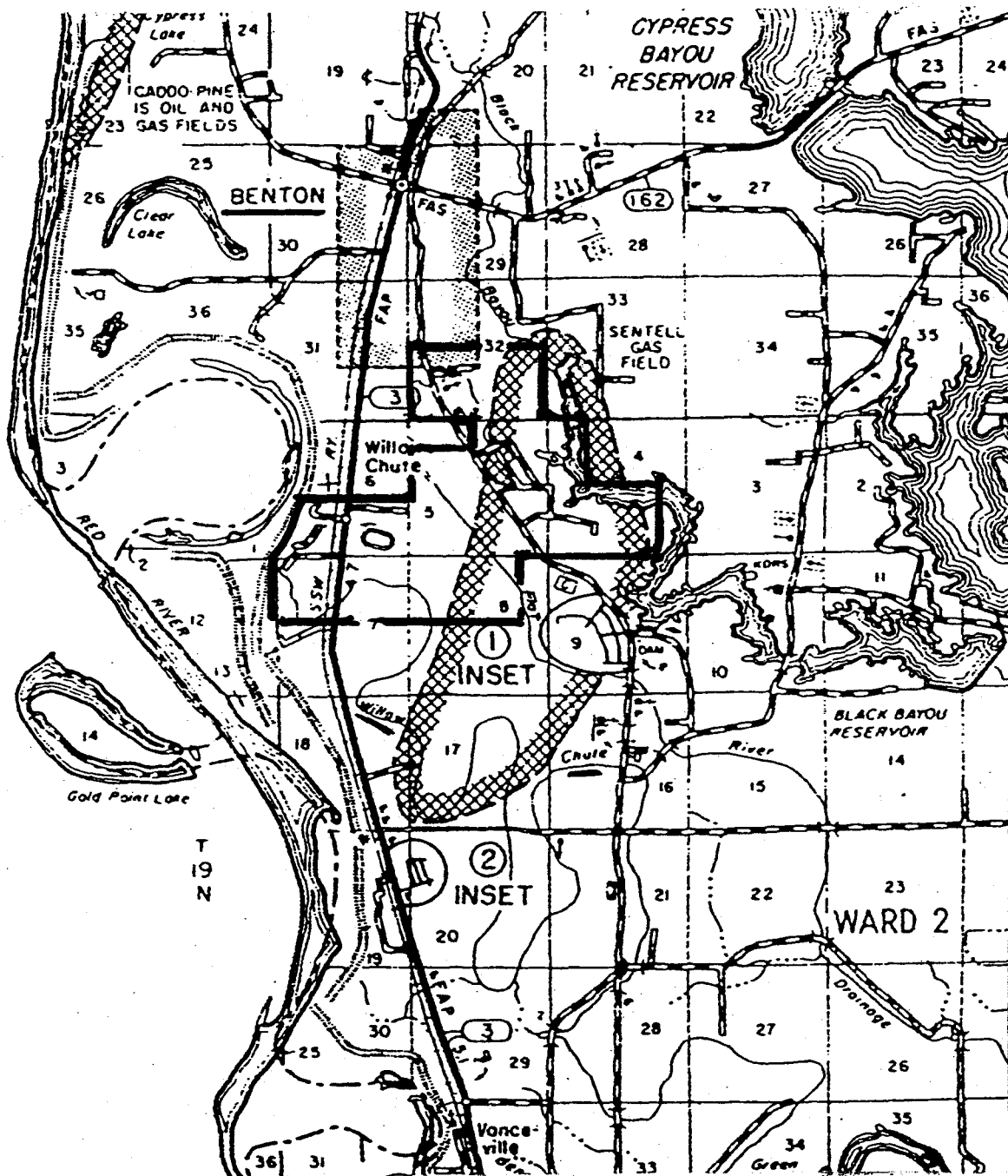
The railroads were brought down both sides of Red River in the 1880's and 1890's. The Shreveport and Arkansas, a branch line of the St. Louis and Southwestern, came down through the river plantations on the Bossier side of Red River in 1888. Captain Vance sold the "Cotton Belt" a depot site for one dollar, and obtained a "passenger and freight station," Willow Chute Station, in 1891. The track was well back from the river at that location. The depot was between the present Benton High School and the old Willow Chute plantation house off towards the river on the west side. Cal Vance and his family probably never lived here, but resided just south of there on his Riverside Plantation. Riverside had a "flag stop" probably dating to that period. The Vances had recently moved to Shreveport and he was now able to conveniently visit his plantations by train.

The "Shreveport public road" crossed Red River at Shreveport and followed the river north to Benton, then generally up along the river to Lewisville, Arkansas. This was the preferred route to Arkansas before the first U.S. Highway 71 was constructed up the Caddo side of the river in 1925, and State Highway 10 (later renumbered 3) on the Bossier side in 1928. Highway 10, or "Benton Road," used the Cotton Belt corridor. Willow Chute Station was discontinued and the depot building removed probably in the late 1930s. In 1940, Mr. T. A. Beauregard built and operated the Willow Chute Grocery near the depot site. The store building burned in June 1951, and nothing was developed there until recent times when Benton High School was constructed at the store site.

William Calvin Vance died of natural causes at Shreveport in October 1898, and his son Larry was murdered at Riverside the following month. His remaining survivors were his widow, Nina; a son, William Calvin Jr.; and a daughter, Estelle. When Cal Vance Jr. married Mary Arnold in 1902, he wanted his own place. Riverside was divided with Cal receiving South Riverside and his sister North Riverside. Willow Chute and the other properties remained in estate and undivided, with Nina having their use during her lifetime. Cal Jr. died in 1910 leaving his widow; a son, Cal Vance III; and a daughter, Larry Arnold Vance. The youngest Cal Vance died young without issue, and Estelle predeceased her mother childless. Nina seems not to have had a very good relationship with her son Cal's family. This may have dated to the partition of the Riverside property in January 1902. Neither Nina nor Estelle attended Cal and Mary's wedding the following month. As a teenager and young adult, their daughter, Larry Arnold Vance, shared some traits with her grandmother that caused some mutual irritation. Nina showed her disregard for Larry Arnold in her will: "I will and bequeath to my granddaughter the one-third of my estate which the law of the State of Louisiana gives her as forced heir." She willed the unencumbered part of Willow Chute to a nephew, Norwood Kincaid

Vance. Nina Vance died in 1935. The plantation was finally partitioned in 1940 after a lengthy lawsuit directed by "Miss Larry" Vance Hunt against Norwood and Nina's grand-nephew, Collier Minge. Collier had been left the greater part of Nina's other properties.

(To be continued)



Willow Chute Plantation 1881

QUERIES

by Isabelle Woods

COLBERT JORDAN SCHICK

Desire to purchase a copy, or pay for a photocopy and mailing, of the family history of the JORDAN family written about 1964 by William COLBERT (now Deceased) of Shreveport, Caddo Parish, LA. Contact Charlotte SCHICK, 1017 Coral Isle Way, Las Vegas, Nevada 89108-1764, Telephone: (702) 647-6785, E-mail: ctschick@lvcm.com

TANNER TUCKER

Seek former students and/or alumni of the Class of 1938 of Central Colored High School. During your attendance at Central from 1935 through 1938, did you know Melvin WILSON and/or Armelia TURNER? Contact Bernard WILSON, 9000 North Lattimore Lane, Tucson, AZ 85742; E-mail: bernard.wilson@aztucs.ang.af.mil

BELL TANNER TUCKER SWINTON WILSON

Seek a photograph of the graduating Class of 1938. The book, *History of Central Colored High School 1917-1949* by G. SWINTON of Texas has three photos of the Junior Class of 1938. But the photos in this book are too grainy to clearly distinguish each person's face therein. Do you have a clear photograph of the Class of 1938? Will pay the cost of reproducing a clear copy of The photograph. My parents, Armelia TURNER and Melvin WILSON, are in that photo. Armelia lived with her sister Mary TANNER BELL and has another sister, Nancy TURNER. Contact Bernard WILSON, 9000 N. Lattimore Lane, Tucson, AZ 85742; E-mail: bernard.wilson@aztucs.ang.af.mil

SAMPLE COWLEY HAMILTON BRADLEY

Do you have a picture of or know who might have a picture of Nancy SeBell (Bell) Sample COWLEY and/or a Family Picture of the James HAMILTON and Nancy Bradley SAMPLE family. Contact W. G. SPILKER, 8805 W. 80th Street, Overland Park, KS 66204-3307. Phone (913) 648-4609.

Address Change

Please notify the ALTGA immediately if your mailing address changes during the year, as we are required to pay full postage for all returned quarterlies.

Does ALTGA Have Your Correct Address?

To comply with Post Office requirements, we must periodically check and certify our mailing list.

Please look at the label on this Genie. Is your address correct? Does it include the nine-digit zip code? If your address is not correct, please notify Herman Weiland at ALTGA, P.O. Box 4463, Shreveport, LA 71134-0463

If your mailing address changes during the year, please notify the ALTGA immediately, as we are required to pay full postage for all returned quarterlies.



Louisiana Records
Direct Index to Conveyances, Caddo Parish, Louisiana
[Continued from The Genie, Vol. 36, 4th Quarter 2002, p. 200]

1841	Felton, Noah B. Jenkins	Land	B136	1848	Fleming, William H. Lewis May (et al) Agt.	D93
1841	Felton, Noah M.E. Davis	Land	B138	1848	Fleming, William M.E. Davis	Land E203
1855	Fenley, John M. William H. Erwin	Land	I265	1850	Fleming, William William Fleming	Land F187
1846	Fenman, William Seth Sheldon	Lot	O601	1850	Fleming, William William Fleming	Land F275
1839	Field, D.P. Peter R. Bland	Lots	A231	1850	Fleming, William Samuel Phillips	Land F441
1841	Field, Edward R. Alfred Flourney	PAtty	B178	1850	Fleming, William John F. Fullilove	Land F642
1845	Field, Robert W. Lewis F. Holt	Land	O648	1850	Fleming, William Elisha H. Jordan	Land F768
1841	Field, Edward R. Ezra Cates	Land	B180	1850	Fleming, William C.C. Hearn	Land F775
1859	Field, Edward R. James Wildy	Land	M724	1850	Fleming, William H. Z. Edmonds	Land F812
1857	Files, Mary A. E.C. Hart		K568	1848	Flood, Thomas S.I. Morehead	Lots D130
1857	Finley, James D. E. Attaway	Land	G847	1848	Flood, Thomas Henry Wagoner	Land D160
1853	Finley, John Charles Chapman	Land	N47	1848	Flood, Thomas Richard F. Smith	Land D464
1858	Fisk, B. J.B. Hursey	Lot	M118	1848	Flood, Thomas, Hen Henry Wagoner	Land E60
1859	Fisk, B. William Robson	Lots	M243	1838	Flores, Case James Wallace	Land A165
1854	Fitzgerald, Michael Catherine Managan			1842	Flores, Felep & Pedro, C. Flores	P.Atty B518
1848	Fitzpatrick, R.G. J.S. Bowles	Lot	D123	1840	Flourney, Alfred L.P. & Q. Black	Land A313
1850	Fitzpatrick, F.G. L.P. Crain	Lots	F166	1840	Flourney, Alfred H.G. Lewis	Agreemt. A403
1848	Fitzpatrick, Pat H. M.L. Herring		E272	1844	Flourney, Alfred David J. Hooks	Land C180
1855	Fitzpatrick, M.A. LM. Nutt	Lots	F289	1844	Flourney, Alfred Frances D. Hearn	Land C290
1850	Flannagan, Hy. J. Edward Grumbles	Land	L251	1845	Flourney, Alfred E.M. & B.F. Jenkins	Land C423
1858	Flannagan, Hy. J Mary D. Pariet	Land	L497	1845	Flourney, Alfred M. M.W. & Frances Hearn	Land C593
1859	Flannagan, William I.W. Pickens	Land	M172	1853	Flourney, Alfred Daniel Waddle	Lots H256
1840	Fleming, William H. Thomas D. Mathes	Land	B88	1853	Flourney, E. Caleb Eubanks	Agreemt H377
1340	Fleming, William William Fleming	Land	B296	1853	Flourney, Alfred V.S.P. (RR)	R of W H464
1842	Fleming, William H. William Fleming	Land	C20	1853	Flourney, Elizabeth Sucn James A. McRady	Land A36
1842	Fleming, William William Hackett	Land	C151	1855	Flourney, T.E. V.S.P. (RR)	R of W A37
1845	Fleming, William H. J. Collins	Land	C302	1858	Flourney, Alfred W.J. Oligive	Land M10
1845	Fleming, William H. William H. Hackett	Land	C448	1859	Flourney, Alfred Silas & L. Flourney	Land M279
1845	Fleming, William H. Samuel A. Belden	Land	C505	1859	Flourneu, Elizabeth S.L. Flourney	Part. M301
1845	Fleming, William H. William Waddy	Land	C591			

1856	Flowers, Benjamin E. Attaway	Land	I716	1840	Fortson, William L. John Ray	Land	A560
1859	Fly, B.J. Sucn John W. Mooring	Land	N39	1840	Fortson, William T. Warren Alfrod	Land	B25
1857	Folly, James John Shows	Land	K486	1841	Fortson, William Amanda Tharp	Land	B44
1851	Forbes, Joel M.J. Denman	Lots	H8	1841	Fortson, William T. T.T. Hultzman	Land	B218
1851	Forbes, John H. N.B. Cole	Land	G44	1844	Fortson, William T. William A. Tharp	Land	C288
1851	Forbes, Joel Mary D. Forbes	Lots	G137	1844	Fortson, Wm. T. D. Waddell	Agreet.	C290
1851	Forbes, Mary D. Thomas McConnell	Lots	G328	1844	Fortson, William T. Henry Waggoner	Land	C295
1832	Ford, S.C. John O. Sewell	Lots	A119	1845	Fortson, William T. S.A. Maxwell	Land	C661
1840	Ford, Joseph Ezra Cates	Land	A333	1845	Fortson, William T. E.S. Fortson	Land	C671
1840	Ford, Joseph M. Ezra Cates	Land	A365	1845	Fortson, William George W. Martin	Land	C799
1843	Ford, Joseph L. Warren (Miss)	Land	B272	1848	Fortson, William Joseph Freedman	Land	D168
1840	Ford, Joseph M.E. Cates	Land	c79	1848	Fortson, William Joseph Marks	D	D252
1848	Ford, Joseph John W. Morris	Lots	D31	1845	Fortson, S.C.T. Charles A. Sewell	Lot	C420
1850	Ford, Chauncey & J.M. H.H. Fatheree	Land	F693	1848	Fortson, E.S. Bradley & Elizabeth	Land	D503
1853	Ford, John D. George B. Merrett	Land	H25	1848	Fortson, E.S. & W.F. Loggy Bayou Ch.	Land	F17
1856	Ford, J.F. George Williamson	Lots	K233	1850	Fortson, William T. James Ray	Land	F135
1854	Ford, L. Sucn. Hugh Currie	Land	H592	1850	Fortson, William Lewis F. Holt	Land	F397
1856	Ford, Epps & Cates Ben Hodge	Lot	K298	1850	Fortson, William Lewis F. Holt	Land	F399
1859	Ford, Cornelia H. Smith	Lots	N.80	1850	Fortson, E. & Aaron William Fortson	PAtty	F403
1854	Ford, J.M. Sam Ford	Lots	H675	1850	Fortson, William T. Warren Alford	Land	F404
1854	Ford, Sam R.A. Cutliff	Lots	H678	1850	Fortson, William William D. Blackman	Land	F547
1854	Ford, Sam George M. Nichols	Land	H728	1844	Fortson, William T. J.F. Smith	Lot	C246
1854	Ford, Sam Robert Green	Lots	H732	1850	Fortson, William Joseph J. Buford	Land	F549
1854	Ford, Sam John M. Landrum	Lots	H745	1850	Fortson, William Warren Alford	Land	F549
1854	Ford, Sam Anna C. Trabue	Lots	H756	1850	Fortson, E.S. Fred Hultzman	Land	F647
1854	Ford, Sam Thomas Gray	Lots	H784	1850	Fortson, E.S. Bradley Dear	Land	F668
1849	Forrest, George J. David I. Hooks	P.Atty	D362	1851	Fortson, William T. Thomas E. Adams	Land	G333
1845	Forrest, George David I. Hooks	Land	E178	1855	Fortson, E.G. R.W. Ridgway	Land	I308
1853	Forrest, George John Page	Land	H156	1855	Fortson, J.R. Edward S. Kneeland Co.	Lot	I627
1853	Forrest, George J. John Page	P.Atty	H219				

1855	Fortson, William E.L. Scroggin	Land	I--	1855	Frow, Thomas William Dalrymple	Land	M91
1855	Fortson, F. H.C. Adams	Land	I348	1851	Fullerton, R.E. L.P. Crain	Lot	G302
1857	Fortson, William John H. May	Lands	L208	1848	Fullilove, J.G. S.D. Parker	Land	D37
1859	Fortson, William Lewis L. Holt	Land	M188	1849	Fullilove, William J.B. Scott	Land	E205
1845	Foster, Flavel Benjamin Wells, Sr.	Land	C709	1849	Fullilove, J.G. John F. Fullilove	Land	E207
1850	Foster, Flavel William Foster	Land	F575	1853	Fullilove, J.F. Elizabeth A. Fullilove		L174
1850	Foster, Flavel William Foster	Land	F531		"G"		
1853	Foster, William Joseph B. Welch	Land	H101	1851	Gaines, George G. Hardy Bryan	Lot	G317
1853	Foster, Flavis James Schenick	Land	H210	1855	Gallagher, J.J. John J. Head	Lot	I343
1855	Foster, Flavis H.C. Adams	Land	I348	1840	Gambell, John A. Jackson Pules	Land	A521
1850	Fowler, F.T. James Wilson	PAtty	F591	1848	Gambell, John A. J.L. Darby	Land	D34
1848	Franklin, J.E. Charles F. Harris	Land	E91	1840	Gamblin, Thomas J. & A.G. Scroggins	Land	A557
1848	Franklin, J.E. Josiah Gill	Land	E220	1843	Gablin, William John Davidson	Land	C60
1843	Frazle, Duncle Hiram Fletcher	Land	C85	1843	Gamblin, Giles William Gamblin	PAtty	C61
1845	Freeman, William T. Seth Shelton	Lot	C601	1847	Gamblin, Thomas Thomas Land	Land	C703
1845	Freeman, William T. Benjamin Lee	Lot	D137	1847	Gamblin, Thomas William Pickens	Land	C744
1848	Freeman, William Thomas W. Jones	Lot	E64	1847	Gamblin, Thomas Mrs. Sarah M. Scroggins	Land	C910
1855	Freeman, B.Y. J. Hoss	Land	I567	1848	Gamblin, Thomas Thomas T. Land	Lot	D73
1857	Frellen, H & C John A. Stephenson	Land	I68	1848	Gamblin, Thomas Thomas T. Land	Lot	D134
1851	Freeman, Joseph William T. Fortson	Land	G230	1849	Gamblin, Thomas R.A. Knott	Land	E94
1848	Frisby, John Allen Hill	Lots	D188	1850	Gamblin, William Jessie V. Brantley	Land	F675
1850	Frisby, John Mrs. Ann Frisby	Land	F373	1850	Garcia, B. James Erwin	Land	A306
1850	Frisby, John Richard A. Cutliff	Lot	F587	1839	Garcia, R. Emanuel Lafite	Land	B105
1851	Frisby, Ann M. Mary Berger	Lot	F761	1841	Gardner, Taylor & Co. Merchants Bank	Land	C93
1840	Frost, J.W. N.B. Arnold	PAtty	A311	1844	Gardner, Charles John M. Sandidge	Land	C197
1841	Frost, J.W. Jonas Robinson	Lot	B213	1850	Gardner, Livingston Edw. Gambles	Land	F225
1842	Frost, J.W. Robert Jackson	Land	C4	1850	Gardner, Basdal I.J. Auld	Land	F245
1845	Frost, J.W. Thomas Gilmer	Lots	C317	1852	Gardner, Basdal Z. & S. Edmunds	Land	G377
1845	Frost, J.W. William Terrell	Lots	C25	1858	Gardner, Edward J.W. Baldwin	Lot	M111
1855	Frow, Thomas Richard Cutliff	Land	L189	1843	Garey, Thomas Edw. S. Batte	Land	C47

1846	Garey, Thomas C. Lewis & John Howell	Lot C466	1839	Gatlen, Thomas John B. Wilson	Floats A138
1844	Gary, Charles N. William Iles	Land C146	1849	Geiger, John C. Geirger	Lot E252
1849	Gary, Thomas D. Thomas Simmons	Land D501	1851	Geirger, C. R.A. Cutliff	Lot F758
1853	Gary, Thomas William Pegran	Lots G957	1851	Geiger, C. John C. Geirger	Patty F763
1853	Gary, Thomas D. V.S. & TRR Co.	Right of W H460	1852	Geiger, C. John Allen & Wm. Paxton	Lot G878
1853	Gary, Charles Eli M. Coleman	Land H633	1851	Geiger, C. John C. Geiger	Patty G146
1853	Gary, Charles Thomas D. Gary	Land K218	1844	George, W.W. John Winter	Lot C229
1856	Gary, Charles N. Sucn N.A. & P.E. Gary	Land K364	1844	George, William W. H.J.G. Battle	Land C251
1842	Garlick, Latham Seth Shelton	Lot C23	1844	George, William W. Mrs. Martha O. Alley	C414
1843	Garlick, Latham Bayliss & Young	Lot C75	1847	George, William W. R.P. Brooks	C928
1846	Garlick, Latham T.M. Littlejohn	Lots C571	1848	George, William W. George Wilmer	Land C875
1846	Garlick, Latham E. Hearne	Land C630	1848	George, B.W. Elizabeth Harris	Land D112
1852	Garlick, Sarah H. Garlick & Bro. Relq. Int. in L. Garlick Sucn	G419	1848	George B.W. James T. Sharp	Land D282
1852	Garlick, Sucn - Heirs of L. Gar- lick Partition	G705	1848	George & Miller J.W. Tyson	Agreemt. D331
1852	Garlick, Charles James M. Finley	Land I594	1850	George, W.B. C. Sullivan	Land F486
1859	Garlick, Henry William B. Cooke	Land M516	1850	George, W.B. Wm. Dally	Land F545
1842	Garrett, William Adam Bowman	Land B424	1850	George, W.B. J.S. Wise	Land F664
1842	Garrett, John James W. Murdock	Land G115	1850	George, William W. Mary D. Cane	Lot G262
1844	Garrett, William George W. Martin	Land C241	1852	George, William W. L.P. Crain	Lot H160
1844	Garrett, William Dr. Jacob Wise	Land C351	1852	George, William Mrs. E. Tyson	Land H401
1847	Garrett, William J.C. Wilson	Land C834	1852	George, William Allen G. Read	Land I159
1848	Garrett, William M.H. Page	Land D143	1852	George, William J.S. Rendall	Lot I242
1849	Garrett, William M.H. Page	Land D516	1855	George, William C.K. Parsons	Lot I268
1849	Garrett, William J.S. Wise	Land D535	1855	George, William W. Geo. Boggs	Land I680
1850	Garrett, William Eli M. Coleman	Land F538	1855	George, William W. William W. Smith	Land K177
1850	Garrett, William Mrs. Edith Harrison	Land G168	1857	George William W. Roland Jones	P. Lots K500
1852	Garrett, William Sucn W.J. Jones	Land G570	1857	George, William Hebrew. Mut. Ben. Assocn.	I259
1853	Garrett, W. Mary E.T. Murphey	Lots H125	1858	George, William The Public	L362
1853	Garrett, William Charles G. Young	Land H341	1858	George, William Yenos Mareno	Lots L477

1858	George, William W.		
	Isaac Johnson, et ux lots	L481	
1858	George, William		
	Thomas Hotchkiss	Tal.	L597
1858	George, William		
	Hy. Douglass	Lot	M150
1858	George, William.		
	Martha A. Meek	Lot	M649
1859	George, William B.		
	Elizabeth & G. Morrow	Land	M623
1851	Gerald, Samuel		
	John D. Bickham	Land	G22
1851	Gerald, E.		
	William Shanks	Land	N702
1853	Giacosa, Jean		
	Eugenia Delanos	M. C.	H314
1856	Gibson, Charles W.		
	S.H. Chisholm	Lot	K201
1856	Gibson, Leroy		
	John Davidson	Land	L324
1853	Gibson, Charles W.		
	V.S. & T. RR	Lot	L366
1850	Gidding, Mary		
	B. Flisk	Lot	F562
1853	Giffin, Gathwaite & Co.		
	Leroy M. Nutt	Lot	H323
1841	Gilbert, John		
	J. Robinson	Lot	B213
1841	Gilbert, John S.		
	D. Dennis	Lot	B132
1843	Gilbert, John S.		
	Arthur Rice	Lot	C141
1843	Gilbert, John S.		
	Charles Gibson	Lot	C141
1843	Gilbert, John S.		
	J.J. Prescott	Land	C276
1847	Gilbert, John S.		
	John M. Landrum	Land	C745
1851	Gilbert, Elizabeth		
	John T. Fullilove	Land	F723
1853	Gilbert, John		
	Clark Claflin	Lot	H143
1853	Gilbert, Elizabeth		
	William Robertson	Land	H359
1853	Gilbert, John S.		
	V.H. Jones	Land	H396
1853	Gilbert, Lucy		
	John M. Landrum	Patty	I237
1856	Gilbert, Susan		
	D. Heine	Lots	K150
1856	Gilbert, John Susan		
	John M. Landrum	Lot	K152
1856	Gilham, Thomas		
	Aaron Smith	Int.. Sucn	
1856	Gilham, Thomas		
	Aaron Smith	Int.. Sucn	
1859	Gilham, Nancy A.	Sucn	
	Heirs of Part.		N179
1859	Gilham, Em.M		
	B.L. Hodge	Land	N280
1849	Gill, Margaret Gill		
	U.M. Bates	Land	F33
1849	Gill, William		
	Z. & S. Edwards	Land	F146
1850	Gill, Thomas		
	Richard P. Brooks	Land	F570
1851	Gill, Mary		
	Richard P. Brooks	Land	F788
1855	Gill, Robert D.		
	Nancy H. Hotchkiss	Int.	I372
1856	Gill, W.W.		
	Beny F. Poindexter	Land	K589
1859	Gill, Mary H.T.		
	R.E. Talmadge	Land	K589
1857	Gill, Mary H.T.		
	E.C. Hart	Trans. Note	K594
1859	Gill, Mary H.T.		
	E.C. Hart	Land	K594
1859	Gill, Nancy H.		
	H.C. Gill	Land	M399
1859	Gillis, Charles		
	E.S. McMillen	Land	M725
1838	Gilmer, Robert L.		
	P.C. Hansborough	Lot	A42
1839	Gilmer, Robert L.		
	W.D. Helm	Lot	A109
1839	Gilmer, Robert L.		
	William Crosby	Lot	A112
1839	Gilmer, Robert L.		
	Nathaniel Luff	Lot	A125
1839	Gilmer, Robert		
	Hotchkiss & Kerchival	Lot	A173
1839	Gilmer, Robert		
	Emerson Natt	Lot	A184
1839	Gilmer, Robert		
	Mrs. F. B. Hardwick	Land	A307
1840	Gilmer, Robert		
	B. Jenkins	Land	A389
1840	Gilmer, T.M.		
	David Gilmer	Patty	A548
1840	Gilmer, Robert L.		
	C.A. Sewall	Land	A452
1841	Gilmer, David		
	Thomas P. Williamson	Bond	B7
1841	Gilmer, Robert L.		
	Thomas Gilmer	Lot	B106
1841	Gilmer, David		
	Thomas P. Williamson	Bond	B4
1841	Gilmer, J.B.		
	Robert Hamilton	Part.	B284
1844	Gilmer, James B.		
	Joseph M. Evans	Patty	C178
1843	Gilmer, Thomas		
	R.C. Oglesby	Lot	C184
1843	Gilmer, J.B.		
	R. Elmer	Land	C200
1843	Gilmer, Thomas M.		
	John N. Howell	Lot	C211
1844	Gilmer, Pauline		
	Robert Hamilton	Land	C221

1844	Gilmer, R.L.			1849	Gilmer, Thomas M.		
	Thomas M. Gilmer Lot	C. 211			Alongo Fournay Land	E73	
1844	Gilmer, G. L. Bankrupt			1849	Gilmer, Robert L.		
	Thomas Gilmer Lot	C236			Mrs. H.C. Cratch Land	El73	
1844	Gilmer, R.L.			1849	Gilmer, J.B.		
	Amelia Sewall Lot	C238			Roland Jones Sawmill	Agt.F90	
1844	Gilmer, R.L.			1850	Gilmer, T.M.		
	J.C. Beall Lot	C243			R.C. Boney Land	F193	
1844	Gilmer, E. M.			1850	Gilmer, T.M.		
	James B. Gilmer Lot	C243			David Gilmer Land	F354	
1844	Gilmer, T.M.			1850	Gilmer, T.M.		
	R.C. Oglesby Lot	C257			L.P. Crain P-Atty	F436	
1845	Gilmer, T.M.			1850	Gilmer, Mrs. A.M.		
	M.A. Sewell Lot	C329			Thomas Gilmer Lot	F672	
1845	Gilmer, James B.			1850	Gilmer, James B.		
	James Marks Land	C369			Amelia M. Lafton Lot	F438	
1845	Gilmer, Robert			1850	Gilmer, T.M.		
	Allen Reed Land	B307			John Young Lot	F685	
1845	Gilmer, Thomas			1850	Gilmer, T.M.		
	Richard A. Cutliff Land	C508			Robert Cook Dot	F689	
1846	Gilmer, J.B.			1850	Gilmer, T.M.		
	Hassanbrack & Erick Land	C627			Hiram Johnson Land	F748	
1846	Gilmer, J.B.			1850	Gilmer, T.M.		
	R.C. Oglesby Lot	C697			C.C. Hearn Lot	G116	
1846	Gilmer, Thomas			1851	Gilmer, T.M.		
	Hiram D. Brown Lot	C549			John K. Lamerick Lot	G183	
1847	Gilmer, Thomas			1852	Gilmer, David		
	C. H Lewis & Co. Agreemt.	C820			John T. Gilmer Land	All	
1847	Gilmer, J.B.			1852	Gilmer, R.L.		
	J.A. Boarman Land	C914			John Knox Land	G404	
1847	Gilmer, J.B.			1852	Gilmer, J.B.		
	Michael Davis Land	C921			L.P. Crain P-Atty	G441	
1848	Gilmer, A.M.			1852	Gilmer, T.M.		
	J.B. Gilmer Lot	C936			Henderson Markahm Lot	G417	
1848	Gilmer, J.B.			1852	Gilmer, T.M.		
	R.C. Oglesby Lot	C936			Mrs. Amelia M. Lafton Lot	G440	
1848	Gilmer, J.B.			1853	Gilmer, T.M.		
	L.K. Person P-Atty	D104			D. Gilmer Corr. Deed	G837	
1849	Gilmer, Thomas M.			1852	Gilmer, T.M.		
	J. McCause Land	D183			Robert L. Gilmore Land	H113	
1849	Gilmer, Thomas			1853	Gilmer, T.M.		
	L.D. Nash Lot	D212			E.C. Hart Lot	H642	
1849	Gilmer, Thomas M.			1853	Gilmer, T.M.		
	I. Dillard Land	D222			E.C. Hart Mill Lot	H718	
1849	Gilmer, J.B.			1853	Gilmer, J.B.		
	H. Hassenbeck Correct	D290			James Boarman Land	H755	
1849	Gilmer, Thomas			1853	Gilmer, J.T.		
	Bender Land	D327			Robert Gilmer Land	I199	
1849	Gilmer, Thomas			1853	Gilmer, J.B.		
	Joseph Douglass Land	D415			Robert Hamilton Land	I167	
1849	Gilmer, J.B.			1855	Gilmer, Robert		
	William Waddy Lots	E6			Thomas Gilmer Land	I199	
1849	Gilmer, Thomas			1855	Gilmer, Thomas		
	Andrew Lawson Land	D552			Robert L. Gilmer Land	I119	
1849	Gilmer, Thomas M.			1855	Gilmer, J.B.		
	G.M. Bender Land	E7			John Pickett Land	I438	
1849	Gilmer, Thomas M.			1855	Gilmer, Sarah		
	G.M. Bender Land	E9			David Gilmer Land	I662	
1849	Gilmer, Thomas M.			1856	Gilmer, James		
	Andrew Scott Land	E10			Mary Vance Don	A49	

1856	Gilmer, L.L. Tarleton-Whiting	K213	1855	Gilphin, James Mary H. Hotchkiss	Lot 1474
1856	Gilmer, J.B. W.S. Vance	Patty K90	1856	Gilphin, James & Sallie W.G. Mullen	Patty K219
1856	Gilmer, Robert L Mrs. M. Rye	Land K232	1857	Gilphin, James & Sallie R.C. Downes	Patty 16-716
1856	Gilmer, Robert L Andrus Scott	Land K312	1849	Gipson, L.L. E.S. Fortson	Land F4
1856	Gilmer, Robert William Scott	Land K337	1849	Gipson, Thomas E.S. Fortson	Land F6
1857	Gilmer, Robert L J.C. Porter	Land K662	1849	Gipson, L Bradley Dear	Relinq. F31
1857	Gilmer, Robert L J.F. Decker	Lease K700	1849	Gipson, L.L. Bradley Dear	Land F32
1857	Gilmer, Robert L Robert Smith	Land L42	1849	Gipson, Thomas, Sr. E.S. Fortson	Land F30
1857	Gilmer, Thomas David Gilmer	Lot L43	1841	Girod, A. A. Drouin	Land V48
1857	Gilmer, David Mrs. E. Watson	Lot L44	1852	Gladden, Hiram N.B. Cole	Land G859
1857	Gilmer, Robert L John Gilmer	Land L98	1849	Glass, William H Robert B. Patterson	Lot E231
1857	Gilmer, Robert L Mark McCutcheon	Land L182	1850	Glass, William H Martha Wiggins	Lot F133
1857	Gilmer, Elizabeth R.A. Cutliff	Lot L221	1850	Glass, R.H. F.E. Sewall	Lot I483
1858	Gilmer, Robert Richard A. Cutliff	Land L598	1858	Glaze, Eliza Wm. Williams, Jr.	L460
1858	Gilmer, R.L. Richard A. Cutliff	Lots I667	1856	Godbold, James C. J.R.R. Harrison	Land I751
1858	Gilmer, R.L. Richard Cutliff	Lots I687	1857	Goodwin, R.W. A.W. Tucker	Land K531
1858	Gilmer, David Heirs Charles Griswold	Lot M99	1857	Goodwin, R.W. Mary Epps	Land K531
1858	Gilmer, George James Gilmer	Land A58	1842	Goldsboough & Parker Wm. C. Smith	Land C11
1858	Gilmer, RL Elizabeth Gilmer	Lot A62	1842	Goldsborough, A.W. Geo. W. Fox	Land C28
1858	Gilmer, David Robert L. Gilmer	Lot M100	1848	Goldsmith, Jacob Goldsmith & Co.	D223
1858	Gilmer, David Martha Dashiell	Lot M101	1852	Gooch, John S. John P. Hailey	Lot G606
1858	Gilmer, David Robert Gilmer	Land M102	1852	Gooch, Johns John P. Hailey	Lot G813
1858	Gilmer, R.L. John Cutliff	Mill lot M119	1853	Gooch, John Wm. W. Smith	Land H296
1859	Gilmer, R. L Anderson Walker	Land M263	1853	Gooch, John S Agreement	I65
1859	Gilmer, R.L. W.J. Scott	Land M265	1853	Gooch, John S W.R. Douglas	Int. I66
1859	Gilmer, R.L. & Thomas Anderson Walker	M269	1853	Gooch, John Lee L.E. Carter	Lots K18
1859	Gilmer, RL. Richard T. Buckner	Lot M430	1853	Gooch, John Lee Geo. Williamson	Lot K142
1859	Gilmer, John T. Martha Dashiell	Lot M552	1857	Gooch, John L. C.E. Behrant	Lot L225
1859	Gilmer, Thomas M. William Robson	Lot M585	1859	Gooch, Martha P.L. Dugrene	Lot M723
1859	Gilmer, John T. William Douglass	Land M708	1849	Goode, B.F. Robert Goode	Lot E186

1849	Gooch, R.A.		
	B.L. Gooch	Lot	E186
1849	Gooch, B.L. & R.A.		
	John P. Hailey	Lot	F97
1849	Goode, B.L.		
	Thos. M. Turner	Lot	F109
1849	Goode, D.B.		
	Almira Frame	Lot	H645
1849	Gordon, Robert		
	Wm. H. Glass		E164
1853	Gordon, Robert Sucn.		
	Mrs. L.E. Cain	Lot	G955
1853	Gordon, Agnes H.		
	T.F. Euster	Patty	H398
1848	Goughment, Adolphus		
	J. Guerrara	Lot	D225
1852	Goza, Mary E.		
	Lee Arich	Int. Sucn	G572
1848	Graham, Joseph		
	A.V. Scott	Land	D51
1857	Graham, John		
	Edith M. Jenkins	Land	L105
1851	Grant, M.M.		
	Mrs. Nancy Kean	Lot	G46
1840	Grappe, F. Heirs		
	J. Brooks	Land	A414
1840	Grappe, J.B. & D.		
	J. Brooks	Land	A415
1852	Graves, Charles & P.S. Sucn.		
	M.B. Peltaway		G426
1852	Graves, P.S.		
	John S. Murray	Land	G575
1855	Gray, Thomas		
	C. Meyer	Lot	I231
1857	Gray, Thomas		
	John D. Bickham	Land	L192
1838	Grapp, T. John C.		
	J.C. McNeil	Lot	A40
1838	Green, John C.		
	A. McNeil	Lot	A71
1838	Green, John C.		
	John Sewall	Lot	A238
1840	Green, John G.		
	T.P. Hotchkiss	Lot	A278
1839	Green, John G.		
	Samuel Otis	Land	A274
1840	Green, A. Pheraby		
	W. Long	Land	A529
1840	Green, John G.		
	Joseph Henry	Land	A597
1841	Green, John G.		
	Joshua B. Long	Lot	B383
1844	Green, John G.		
	Amelia M. Sewall	Lot	C248
1848	Green, John G.		
	Roland Jones	Lot	D285
1849	Green, Robert		
	Hy. & S. Vanbibber	Lot	D561

1849	John G.		
	L.P. Crain	Lot	E116
1849	Green, John G.		
	J.M. Landrum		E274
1850	Green, Robert		
	James Robinson	Lot	F368
1858	Green, Robert		
	C.H. Thorn	Land	F485
1853	Green, Robert		
	L.P. Crain	Lot	H96
1853	Green & Douglass & Co.		
	Roysden & Shafford	Lot	H180
1853	Green, Robert		
	M. Watson	Lot	H788
1855	Green, A.		
	A. Flournoy	Land	I397
1856	Green, R. Sucn		
	M. Watson	Land	I633
1856	Green, R.		
	L.P. Crain	Lot	K135
1856	Green, R.		
	Wm. H. Hackett	Lot	-136
1856	Green, John (Ex'r)		
	Samuel Ford	Lot	K199
1856	Green & Douglas		
	John M. Thatcher	Lot	K253
1858	Green, John J.		
	A.B. McMillen	Land	L569
1858	Green, Wm. M. Sucn		
	Benj. G. Logan	Lot	L645
1858	Green, Wm. J		
	Robert Patterson	Lot	L721
1858	Green, Robert Sucn		
	T.L. Scroggin	Land	M35
1859	Green, Robert, Sucn		
	L.M. Nutt	Land	M356
1859	Green, John J.		
	James George		M431
1841	Greenwood, John		
	W.G. Buchannon	Land	B392
1859	Greenwood, M.E. Church		
	The Public Corp.		M368
1845	Greenwood, Town Co.		
	J.G. Jones	Patty	C382
1845	Greenwood Town Co.		
	Mrs. H.N. Hetchkiss	Lot	C426
1845	Greenwood, Town Co.		
	John & Jas. McFarland	Lot	C427
1845	Greenwood, Town Co.		
	Robert Curlee	Lot	C429
1845	Greenwood, Town Co.		
	J.G. Jones	Lot	C430
1845	Greenwood, Town Co.		
	Charles Young	Lot	C431
1845	Greenwood, Town Co.		
	L. Garlick	Lot	C433
1845	Greenwood, Town Co.		
	Charles Edwards		C434

1846 Greenwood, Town Co.
 Curlee, Elliot Lot C479
 1846 Greenwood, Town Co.
 Mrs. Harriett C. Lewis Lot
 1846 Greenwood, Town Co.
 Ely Jenkins Lot C833
 1848 Greenwood Town Co.
 Turner Scott Lot D143
 1847 Greenwood Town Co.
 E.W. Jenkins Lot C883
 1848 Greenwood Town Co.
 Robert Curlee Lot D154
 1848 Greenwood Town Co.
 J.G. Jones Lot D163
 1848 Greenwood Town Co.
 Greenwood School, Caddo
 Academy Lot E269
 1848 Greenwood Town Co.
 Caddo Academy Lot E267
 1851 Greenwood, Town Co.
 J.G. Jones PAtty F793
 1859 Greer, William B.
 Adam Bauman Lot M624
 1846 Grenaux, Charles
 J. Grappe Relinq. Lot C506
 1846 Grenaux, Charles
 James Wood Land C80
 1852 Grenaux, Charles
 S. Bossier Release G597
 1846 Gregg, John
 R. Nicholson Land C653
 1856 Gregg, John
 America Nicholson Land I604
 1849 Griffin, Susan
 L. Austin Cont. E145
 1858 Griffin Heirs
 H.J.G. Mattie Land I684
 1859 Griggs, John C.
 Eli D. Williams Exch. N77
 1845 Grigsby, L.K.
 John Kirk Agt. C498
 1846 Grigsby, L.K.
 Wm.T. Feaman PAtty C550
 1846 Grigsby, L.K.
 L.P. Crain Land D190
 1849 Grigsby, L.K. Sucn
 B. Jenkins Lot #97
 1851 Grigsby, L.K.
 Wm. Elixon Lot F700
 1851 Grigsby, L.K.
 D.F. Roysdon Lot G226
 1853 Grigsby, L.K.
 R.A. Cutliff Lot H260
 1853 Grigsby, L.K.
 Mrs. Mary Alwine Lot H285
 1853 Grigsby, L.K.
 John Grigsby Land H751
 1855 Grigsby, L. Sucn.
 L.K. Grigsby Lots I228
 1855 Grigsby, L.K.
 P.O. Ragsdale Lot I358

1856 Grigsby, John
 J.S. Allen Land I538
 1856 Grigsby, L.K.
 A.G. Reed Agreeet. I552
 1856 Grigsby, L.K.
 John Craig Lot I657
 1856 Grigsby, L.K.
 V. Ritchie Lot K550
 1857 Grigsby, J.R. & L.K.
 John Craig Agreeet. K631
 1858 Grigsby, L.K.,
 Wm. M. Butler Lot M9
 1858 Grigsby, L.K.
 J.H. Reynolds Exch M18
 1859 Grigsby, J.V.; A.M.; L.B.; L.K.
 R.White Agreeet M507
 1859 Grigsby, L.K.
 LM. Nutt Lot M510
 1858 Grinage, Ed. W.
 E. Martin Land M125
 1858 Grinage, Ed.W.
 Jas. H. Mallory Land P845
 1848 Griswold, Charles
 W.H. Fleming Land D101
 1848 Griswold, Charles
 M.E. Davis PAtty D127
 1848 Griswold, Charles
 Hy. Welch Lot D430
 1849 Griswold, Charles
 Alex McIntyre Land D436
 1849 Griswold, Charles
 Wm. Olcott Land E204
 1850 Griswold, Charles
 J. Waling Lot F431
 1851 Griswold, Charles
 Mrs. E.D. Austin Land G29
 1851 Griswold, C.R.
 Charles Young Land G68
 1853 Griswold, C.R.
 M. McCarty Lot G926
 1853 Griswold, C.R.
 Robert Coke Lot H86
 1853 Griswold, C.R.
 R.C. Oglesby Lot H380
 1853 Griswold, C.R.
 T.J. Redus Lot H663
 1853 Griswold, C.R.
 F.M. Waldron Land I143
 1856 Griswold, C.R.
 Branda McKenna Lot 143
 1856 Griswold, C.R.
 L.P. Crain Lot K207
 1856 Griswold, C.R.
 Wm. W. Smith Land K222
 1856 Griswold, C.R.
 R.D. Sale Lot K561
 1857 Griswold, C.R.
 Robert Gilmer Land L77
 1857 Griswold, C.R.
 U.S. & T.R.Co. Lot L363

L'#	Grumbles, Edward		
	P.C. Crump	Land	L363
1859	Guerrard, Joseph		
	H. Lavy et al	Land	M520
1848	Guerrand, Joseph		
	E. Cabet & Co.		D428
1851	Guice, J.		
	Elizabeth Guice	Land	G10
1847	Guice, J.		
	John Gregg	Land	C870
1856	Guice, J.J.		
	L.B. Dockery	Land	I530
1857	Guice, J.J.		
	V.S. & R.RR		L94
1857	Guice, J.J. Sucn		
	Hamilton Howell	Land	L378
1857	Guice, J.		
	Thomas Palmer	Land	H696
1851	Guice, Elizabeth		
	Jonathan Guice	Land	G337
1853	Guice, Elbert H.		
	Wm. Hester	Land	H427
1853	Guice, J.		
	Thomas Parker	Land	H696
1850	Guice, J.		
	Richard Boney	Land	F305
1847	Guill, J.		
	J. Gregg		C872
1856	Guill, Joseph		
	Josephine Penick	Land	L255
1858	Guill, J.		
	Warren P. Davis	Land	M72
1859	Guill, J.		
	Elizabeth Gamblin	Land	O1074
1851	Guill, J.		
	Elizabeth Guice	Land	G10
1855	Guill, J.		
	John C. Burress	Land	I246
1851	Gupton, N.		
	J. Connally	Land	G112
1851	Gupton, N.		
	Lydia Rambo	Land	G112
1840	Guyn & Bayle		
	John R. Smith	Land	A472
1844	Guyn & Bayle		
	Amellia Sewell	Land	C248
	- "H"-		
1846	Hackett, William		
	Wm.H. Fleming	Lot	C590
1850	Hackett, John		
	P.P. Butler	Lot	C590
1854	Hackett, John		
	A.D. Battle	Land	H610
1856	Hackett, John		
	Mrs. C.K. Parson	Land	H611
1856	Hackett, R.R.		
	Wm.H. Hackett	Land	K73
1848	Hailey, John		
	John Collon	Lot	D255

1848	Hailey, John P.		
	Jm F.R. Roach	Land	D576
1849	Hailey, John P.		
	Margaret Cummings	Lot	F101
1850	Hailey, John P.		
	Eli M. Coleman	Land	F251
1850	Hailey, John P.		
	Wm. Faulkner	Land	F114
1850	Hailey, John		
	Benj. L. Hodge	Lot	F421
1850	Hailey, John P.		
	John S. Gooch	Land	F489
1850	Hailey, John P.		
	Ernest Bonnegent	Lot	F524
1850	Hailey, Elizabeth		
	Wm. Wyche	Land	F545
1850	Hailey, John		
	John Hailey	Lot	F578
1852	Hailey, John P.		
	W. Ellerson	Lot	G704
1853	Hailey, John P.		
	W.J. Beall	Lot	G970
1853	Hailey, John P.		
	Nancy H. Hotchkiss	Lot	H68
1853	Hailey, John P.		
	Richard Patrick	Lot	H405
1854	Hailey, John P.		
	J.A. Nottingham	Lot	H724
1854	Hailey, John P.		
	Frank E. Sewell	Lot	H754
1854	Hailey, John P.		
	F.R. Roach	Lot	I38
1854	Hailey, John		
	F.R. Roach	Lot	I175
1855	Hailey, John		
	F.R. Roach	Lot	I204
1857	Hailey, John		
	A.J. Hitchcock	Lot	I437
1857	Hailey, John		
	F.R. Roach	Land	K521
1859	Hailey, John		
	Jonas Robeson	Lot	K639
1859	Hailey, John		
	Jonas Robeson	Lot	M255
1857	Hailey, John		
	John McFall	Lot	K643
1857	Hailey, John		
	Mary Austett	Land	K644
1855	Hailey, John		
	J.S. Rendall	Lot	I281
1858	Hailey, John		
	T. Mooring	Land	L706
1858	Hailey, John		
	E.T. Hearne	Land	L709
1859	Hailey, John		
	J.S. Rendall	Lot	M256
1859	Hailey, John		
	R.A. Cutliff	Lot	M577
1859	Hailey, John P.		
	S.H. Parson	Lot	N62

1859	Hailey, John			1839	Hansborough, P.C.		
	Sallie Marshall	Lot	N164		R.L. Gilmer	Lot	A384
1859	Hailey, John			1839	Hansborough, D.C.	Lot	A603
	Mrs. L. Elliott	Lot	N174	1840	Hardin, Rachel		
1840	Hall, Josiah				Mary Howell	Land	A363
	K.G. William	Land	A591	1841	Hardwick, J.W.		
1851	Hall, Josiah				R.L. Gilmer	Land	B237
	Robert Hynson	Land	G127	1849	Hardwick, J.W.		
1847	Hall, Wm.				Willis Ellixson	Lot	E160
	James W. Calloway	Lot	C719	1849	Hardwick, J.W.		
1850	Hall, Thomas				Henry Evers	Lot	E161
	Mrs. L.J. Nicholson	Land	F582	1849	Hardwick, J.W.		
1851	Hall, Thomas				J. Brock		F74
	T.J. Redus	Land	G119	1850	Hardwick, J.W.		
1867	Hall, Thomas P.				T.M. Gilmer	Land	F586
	William Allen		L168	1850	Hardwick, J.W.		
1854	Hall, Thomas				J.C. Beall	Lot	F619
	Thomas Lake	Land	I196	1853	Hardwick, F.V.		
1859	Hall, Edward K.				Mrs. J.W. Hartsick	Rem	G941
	John Reynolds	Lot	M495	1853	Hardwick, J.W.		
1853	Hallowell, S.S.				L.P. Crain	Land	H361
	A. Dockery	Land	H482	1854	Hardwick, F.M. Sucn		
1841	Hamilton, Robert				C.R. Griswold	Lot	H737
	J.B. Kelly		B281	1854	Hardwick, F.M. Sucn		
1841	Hamilton, Robert				Jas. Lancashire	Lot	H738
	J.B. Gilmer	Pt.Int	B284	1854	Hardy, John		
1845	Hamilton, Robert				A. Green	Lot	I103
	J.B. Gilmer		G209	1840	Harlin, Rachel		
1847	Hamilton, P.				Mary Howell	Lot	A363
	Wm.F. Hamilton	Patty	C738	1847	Harper & Jones		
1853	Hamilton, Sucn				E.W. Jenkins	Lot	A363
	Nathan Ross	Patty	H559	1847	Harper & Fagus		
1855	Hamilton, Robert Sucn				M. Roth	Land	C835
	Mrs. J.D. Donnelson	Land	I318	1848	Harper, William W.		
1855	Hamilton, Robert Sucn				Greenwood Town Co.	Lot	D160
	Mrs. J.D. Donnelson	Land	I500	1849	Harper, Wm. W.		
1856	Hamilton, P. Sucn				Robert Curlee	Lot	D521
	John Watson	Land	K55	1849	Harper, Wm. W.		
1857	Hamilton, P. Sucn				A.G. Faqua	Partn.	D521
	Ann E. Watson	Agent	L13	1853	Harper, Wm. W.		
1840	Hamlet, Charles				Franklin Yearlock	Land	H4
	John Rogers	Land	A471	1857	Harper, Robert G.		
1853	Hamlin, L.J.				W.T. Winans	Lot	K375
	Hugh Currie	Partn.	H492	1857	Harper, Wm. W.		
1853	Hamlin, L.J.				Chas. Young	Lot	K385
	Wm.W. Smith	Land	I535	1858	Harper, Wm.W.		
1843	Hammond, Edr. G.				Wm. Shaw	Land	L286
	John Kirk Jr.	Land	G117	1859	Harper, Windus		
1854	Hammond, Job				Wsley P. -	Lot	A72
	D. Heine	Money	I13	1849	Harris, Charles		
1848	Hanly (O'Hanley)				Richard Boney	Land	E90
	Victor Plangue	Lot	D395	1850	Harris, McS.		
1849	Hanna, Thomas J				Wm. F. Harris	Land	F474
	A.D. Hiene	Land	D562	1850	Harris, Wm. F.		
1849	Hanna, L.N. & Thos.				Benjamin Birmingham	Land	F544
	H.J. Lengsfeld	Lot	D633	1850	Harris, M.S.		
1849	Hanna, L.A.				B. Wooten	Land	F599
	Thomas Hanna	Patty	E60	1853	Harris, W.F.		
1849	Hanna, L.A.				L.F. Holt,	Land	G87
	Mrs. D.H. Heine	Lot	E215	1854	Harris, W.F.		
1852	Hanks, S. James				W.P. Davis	Land	H532

		Land	G434				
1853	Hanks, R.M.						
	Wm. Hanks,	Land	H65				

1855	Harris, Charles F. J. Gill	Land	I211	1846	Hearne, H.R. E. Hearne	Int	C367
1855	Harris, W.F. John Hailey Trans.	Note	K632	1848	Hearne, E. Sucn. E.T. Hearne	Land	D158
1855	Harrison, W.D. Edw. H. Baugh	Land	I380	1848	Hearne, C.C. S.H. & A. Dockery	Land	D161
1855	Harrison, Carter R. T.B. Hardwich Marr.	Cont.	I597	1848	Hearne, C.C. Mrs. T.S. Peoples	Land	D226
1858	Harrison, Matilda L.J. Hamilton	Sucn.	L276	1848	Hearne, S. Sucn C.C. Hearne		D610
1846	Hart, E.C. Pauline DeGraffenread	Part.	C672	1848	Hearne, Sarah A. J. Hoss	Int, Sucn	D440
1846	Hart, E.C. Robert W. LeGrand	Lot	C498	1850	Hearne, A.H. H.R. Hearne	Land	F301
1847	Hart, E.C. John K. Lameuch	Lot	C781	1850	Hearne, C.C. Edw. Harlick	Land	F448
1848	Hart, E.C. Robert Crooks	Lot	F560	1850	Hearne, C.C. Sam Vanbidder	Land	F633
1851	Hart, E.C. Prichard Walsh	P. Atty	G191	1850	Hearne, C.C. A.L. Hearne	Land	F665
1853	Hart, E.C. Mrs. Elsie Watson	Land	H357	1851	Hearne, E.T. Jacob Hoss	Land	F698
1853	Hart, E.C. F.R. Roach	Lots	H415	1851	Hearne, F.C. H.R. Hearne	Land	G42
1854	Hart, E.C. Hy. Leriomondie	Lots	I22	1852	Hearne, C.C. John Reynolds	Land	G496
1855	Hart, E.C. Benj. Hodge	Lots	I377	1853	Hearne, H.R. Wm. Bickham	Land	H94
1855	Hart, E.C. John Howell	Lots	I548	1853	Hearne, C.H.F. Wm. H. Baylies	Rem.	H419
1856	Hart, E.C. John W. Smith	Lots	I766	1853	Hearne, C.C. S.R. Hearne	Land	H440
1858	Hart, E.C. Sallie Marshall	Lots	L463	1853	Hearne, H.R. J. Allen	Land	H486
1859	Hart, E.C. Heirs J.B. Pickett	Lots	L463	1855	Hearne, Wm. Sucn E. Hearne	Part.	I605
1859	Hart, E.C. E.C. & B.W. Murry	Land	N42	1858	Hearn, N.H.H. J.G. Mattle Tax title		I684
1850	Hassenbranch, Henry M. Hassenbrach	Land	F573	1858	Hearne, Nancy Thomas Powell	Land	M545
1854	Hays, William Anthony Maghee	Sucn.	HI	1858	Hearne, A.L. Thomas Powell	Int. Sucn	M705
1841	Hays, Thomas Robert Hamilton	Land	B18	1859	Harper, Windus Wesley Harper	Lot	A72
1858	Hawthorne, James W. Cole	Land	M24	1853	Hays, William Anthony Maghee	Int. Sucn	
1851	Heald, John B.G. Rowland	P. Atty	G237	1850	Head, William M. N. Capone		F339
1854	Heald, John R.M. Bond	Title	I113	1850	Head, William W. Nancy Eddins		F484
1855	Heald, John E. Ward	Land	I338	1850	Head, Samuel V.E. Head Don.	Slaves	G400
1840	Hearne, William E.T. Hearne	Land	A406	1853	Head, Samuel N. Head, William	Lots	G928
1845	Hearne, C.C. Neth Seldon	Lot	C368	1853	Head, William N. Jas. Peace	Lots	H137
1846	Hearne, E. H.R. Hearne	Int.	C567	1858	Heath, John T. Wm. Williams		L400
				1858	Heffner & Hunsicker E.S. Woolridge	Lots	M73

To Be Continued...

1855	Heine, A.L. D. Goldsmith	EL34	1851	Herring, M.D. Geo. M. Nichols Land	G188
1855	Heine, ALL. L. Austin Co. Con.	I290	1854	Herring, Wm. J.M. Powell Land	I166
1857	Heine, Wm. D. John Cassidy Lots	K383	1854	Herring, Martha Sucn. Wm. Herring Land	I194
1857	Heine, Wm. D. Geo. Williamson Land	L205	1855	Herring, J.P. Charles Gibson Lot	I463
1858	Heine, H.L. Hearne P.Atty	L523	1838	Hester, Annie R. & David D. Wadell	A47
1858	Heine, D. Harriett Lewis Land	L610	1851	Hester, A.K. Scott Sucn David C. Hester Land	G396
1859	Heine, D. Wm. Robson Land	N130	1851	Hester, Charles H. Lawrence Lot	G531
1838	Helm, W.D. R.L. Gilmer Lots	A29	1854	Hester, David, Sucn Charles Hester Land	I162
1848	Helm, Wm. D. Benj. Smith Lots	EL43	1859	Hicks, Wm. H. Charles Bickham Lot	N211
1850	Helm, Samuel P. Susan Tabor Land	F348	1841	Higginbotham, Ryley Wm.T. Fortson Lot	B276
1851	Helm, George W. Samuel P. Helm P.Atty	G294	1845	Higginbotham, Ryley Wm. T. Fortson Lot	G793
1851	Heine, George Geo. W. Helm 38A	F691	1854	High, James Thomas S. McConnell Lot	H598
1856	Helm, George W. A.B. Helme Land	K231	1838	Hill, H.H. B.K. Stephens Land	A89
1858	Helm, A. George Tabor Land	L506	1838	Hill, A.W. T. Norris Land	A470
1840	Henderson, John N. Sanderford Land	A520	1858	Hinston, Mildred & W.S. Thomas R. Mosley Rel.	L624
1841	Henderson, James G. James H. Scales P.Atty	B278	1854	Hitchcock, A.J. John R. Harrison Lot	H620
1854	Henderson, James Sm. M. McCutcheon Land	I66	1853	Hitchcock, Mary A. P. Sprott P.Atty	H556
1851	Hendricks, S.B. Wm Elachard & D. Cornelus	F804	1854	Hitchcock, A.J. Mary A. Hitchcock Land	H607
1852	Hendrick, S.H J.M. Birdsong Land	G872	1854	Hitchcock, A.J. F.R. Harrell Land	H621
1853	Hendrick, S.B. Jas. C. McGee Lot	H475	1854	Hitchcock, A.J. J.R.R. Harrison Lot	H624
1855	Hendrick, S.B. D.H. Mallory Land	I325	1859	Hitchcock, A.J. H. Markham Lot	N7
1856	Hendrick, S.B. Wm.S Horton Land	I686	1859	Hitchcock, A.J. L.M. Nutt Land	N56
1854	Henry, H.T. R.C. Oglesby Land	C482	1859	Hitchcock, -A.J. L.M. Nutt Land	N68
1854	Henry, Elizabeth Thomas Philyen Land	H688	1851	Hodge, Benj. L. S.H. Cain Lot	G237
1856	Henry, Elizabeth John F. Bowden Land	I47	1853	Hodge, Ben J. Renfro Dot	H152
1856	Henry, Mrs. E.L. F.W. Hughes Land	K350	1853	Hodge, Benj. L. F.M. Waldron Lot	H384
1859	Henry, Mrs. C. Mrs. Lyna Walker Lot	C174	1853	Hodge, Benj. Hy. Hunsicker Lot	H332
1850	Herndon, John F. James Erwin Lot	C174	1853	Hodge, Benj. R.C. Oglesby Lot	H411
1850	Herring, M.D. Mrs. M.L. Herring Lot	F434	1853	Hodge, Benj. Samuel Bennett Lot	H429
			1855	Hodge, Benj. F.S. Powell Land	I370

Surname Index...First Quarter 2003
[A surname may appear more than once on a page]

Acorns 18

Adams 12

Adams 38, 39

Adire 12

Alford 18, 38

Allen 12, 18, 45, 47, 48

Alley 40

Alwine 45

Amstead 29

Anderson 18

Anthony 12

Arich 44

Arnold 24, 33, 39

Arthur 12

Attaway 37, 38

Aucoin 17

Auld 39

Austett 46

Austin 45, 49

Bailey 12, 29

Baldwin 39

Bank 39

Barnes 18

Barron 18

Bartlet 12

Bates 41

Batte 39

Battle 40, 46

Baugh 48

Bauman 45

Bayliss 48

Beall 42, 46, 47

Beasley 28

Beauregard 33

Behrant 43

Belden 37

Bell 18, 35

Bender 42

Bennett 49

Benson 29

Berger 39

Beyer (or Byer) 12

Bickham 41, 44, 48, 49

Birdsong 49

Birmingham 47

Bishop 12

Blachard 49

Black 37

Blackman 38

Blair 18

Bland 37

Boarman 42

Boggs 40

Bond 48

Bonds 18

Boney 42, 46, 47

Bonnegent 46

Bossier 45

Bowden 49

Bowles 37

Bowman 18, 40

Boyd 18

Brandeth 12

Brantley 39

Brazil 12

Britain 25

Brock 47

Brooks 40, 41, 44

Brown 4, 18, 29, 42

Bryan 39

Buchannon 44

Bucker 43

Buford 38

Burke 17

Burnham 23

Burress 46

Butler 12, 45, 46

Cabet 46

Cadran 9, 10, 11

Cain 49

Caldwell 18

Callagham 12

Callian 18

Callion 18

Calloway 47

Calvin 33

Camp 12

Campbell 12, 32

Cane 40

Cannon 18

Canterbery 12

Cantly 12

Capone 48

Cargile 18

Carr 18

Carson 18

Carter 43

Cary 12

Cassidy 49

Cates 37, 38

Causey 18, 19

Chambers 19

Chapman 37

Chew 29

Chisholm 41

Clafin 41

Clark 12, 29

Clay 12

Clewell 12

Coal 19

Coghlin 12

Surname Index...First Quarter 2003
[A surname may appear more than once on a page]

Coke 45	Deans 29	Ervin 19
Colbert 35	Dear 38, 43	Erwin 37, 39, 49
Cole 38, 43, 48	Decker 43	Esset 13
Coleman 19, 29, 40, 46	DeCota 13	Ethridge 13
Collins 37	DeGraffenread 48	Eubanks 37
Collon 46	Delanos 41	Euster 44
Colquitt 29	DeMoss 13	Evans 19, 27, 29, 41
Connally 46	Denman 38	Evers 13, 47
Conway 19	Dennis 41	<u>Faqua 47</u>
Cook 42	Denson 27	Farrar 19
Cooke 40	Denton 19	Fatheree 38
Cooper 12	Dillard 42	Faulkner 46
Cornelus 49	Dockery 46, 47, 48	Favrot 17
Cox 28	Donnelson 47	Feaman 45
Coyle 12	Dorsey 19	Felton 37
Craig 45	Douglass 41, 42, 43	Femburger 13
Crain 37, 39, 42, 44, 45, 46	Downes 43	Fenley 37
Cratch 42	Draper 13	Fenman 37
Crayton 13	Drouin 43	Field 37
Crooks 48	Dubrock 13	Files 37
Crosby 41	Dugrene 43	Finley 19, 37, 40
Crozier 13	Dumore 29	Fisk 37, 41
Crump 13, 46	Duncan 29	Fitzgerald 13, 37
Cummings 32, 46	Duplantier 17	Fitzpatrick 37
Curlee 44, 45, 47	Durio 13	Flanagan 13
Currie 38, 47	Dutton 13	Flannagan 37
Curry 29	<u>Eddins 48</u>	Fleming 37, 45, 46
Cutliff 38, 39, 40, 42, 43, 45, 46	Edmonds 37, 39	Fletcher 39
<u>Dally 40</u>	Elixon 45	Flood 37
Dalrymple 39	Ellerson 46	Flores 37
Daniels 29	Elliot 45	Flourneau 37
Dantzler 19	Elliott 47	Flourney 37
Darby 39	Ellixson 47	Flournoy 44
D'Armond 17	Elmer 41	Flowers 13, 38
Dashiell 43	Elms 19	Fly 38
Davidson 39, 41	Emden 9, 11	Folly 38
Davis 19, 29, 37, 42, 45, 46, 47	Emily 24	Folt (or Fort) 19
Day 19	Epps 43	Fontenot 13

Surname Index...First Quarter 2003
[A surname may appear more than once on a page]

Foournay 42	Geirger 40	Greenwood 44
Forbes 38	George 27, 40, 41, 44	Greer 45
Ford 19, 29, 38, 44	Gerald 40	Gregg 45, 46
Forrest 38	Giacosa 40	Grenaux 45
Fortin 17	Gibson 13, 19, 41, 49	Grenier 9
Fortson 38, 39, 43, 49	Gidding 40	Griffin 22, 41, 45
Foster 39	Gilbert 40	Grigsby 45
Fowler 28, 39	Gilham 40	Grinage 45
Fox 43	Gilkey 13	Grisby 45
Frame 44	Gill 39, 41, 48	Griswold 43, 45, 47
Franklin 39	Gilmer 31, 39, 40, 41, 42, 43, 45, 47, 49	Grumbles 37, 46
Frazle 39	Gilphin 43	Guerrara 44
Freedman 38	Gipson 43	Guerrard 46
Freeman 39	Girod 43	Guice 46
Frellen 39	Gladden 43	Guidry 13
Frisby 39	Glass 43, 44	Guill 46
Frost 39	Glaze 43	Gupton 46
Frow 39	Godbold 43	Guyn 46
Fudge 19	Goldman 13	<u>Hackett 37, 44, 46</u>
Fullerton 39	Goldsborough 43	Hailey 43, 44, 46, 47, 48
Fullilove 37, 39, 41	Goldsmith 49	Haines 20
<u>Gaines 39</u>	Gooch 43, 44, 46	Haley 13
Gallagher 39	Goode 43, 44	Hall 13, 47
Gallien 13	Goodwin 19, 43	Hallowell 47
Gambell 39	Gosby 19	Halman 20
Gambles 39	Goughment 44	Hamilton 41, 42, 47, 48
Gamblin 39, 46	Govoro 9, 11	Hamlet 47
Gamer 19	Goza 44	Hamlin 20, 47
Garcia 39	Grace 29	Hammond 47
Gardner 19, 39	Graham 44	Hamner 13
Garey 39, 40	Grant 44	Hanks 29, 47
Garlick 40, 44	Granthamb 13	Hanly 47
Garrett 40	Grappe 44	Hanna 47
Garvin 13	Graves 44	Hansborough 41, 47
Gary 40	Gray 38	Harbison 13
Gatlen 40	Gray 44	Hardin 3, 47
Gee 19	Green 20	Hardwich 47, 48
Geiger 40	Green 20, 38, 44, 47	Hardwick 41, 47

Surname Index...First Quarter 2003

[A surname may appear more than once on a page]

Hardy 47	Hipps 13	Journett 14
Harlick 48	Hitchcock 46, 49	Justamend 14
Harlin 47	Hodge 13, 28, 38, 41, 46	<u>Kean 44</u>
Harper 47, 48	Hodge 48	Kelley 14, 20
Harrell 49	Hodges 29	Kelly 47
Harriett 45	Holdman 20	Key 21
Harring 13	Hollman 20	Keys 30
Harris 20, 29, 39, 40, 47, 48	Holman 20	Killingsworth 14
Harrison 20, 40, 43, 48, 49	Holt 37, 38, 47	Kinderman 21
Hart 37, 41, 42, 48	Home 13	King 14
Hartsick 47	Hooks 37, 38	Kirk 45, 47
Harvey 29	Horton 29, 49	Kirkland 4
Hassenbeck 42	Hoss 39, 48	Kleinpeter 17
Hassenbranch 48	Hotchkiss 41, 43, 44, 46	Kneeland 38
Hathorn 17	Hotchkiss 41	Knott 39
Hatkinson 17	Howell 40, 41, 46, 47, 48	Knox 21, 42
Hawkins 29	Huckabay 27	Krause 2
Hayes 20	Hughes 49	<u>Lacy 21</u>
Haynes 20	Hulster 13	Lafite 39
Hays 20, 48	Hultzman 38	Lafitte 14
Head 39, 48	Hunsicker 49	Lafton 42
Heald 48	Hunt 24, 34	Lagardy 30
Hearn 37, 42	Hunter 20	Lake 47
Hearne 40, 46, 48, 49	Hursey 37	Lamb 14
Heath 48	Hynson 47	Lamerick 42
Heffner 48	<u>ILES 40</u>	Lameuch 48
Heine 41, 47, 49	<u>Jack 29</u>	Lamon 17
Helm 41, 49	Jackson 14, 20, 39	Lancashire 47
Henderson 49	Jacobs 29	Land 39
Hendrick 49	James 14	Landrum 38, 41, 44
Henry 44, 49	Jarvis 14	Laquier 17
Herring 37, 49	Jefferson 4	Larose 9, 11
Hester 46, 49	Jemmison 20	Laurance 14
Hicks 27, 49	Jenkins 20, 37, 41, 44, 45, 47	Lavy 46
Hiddleston 13	Jewel 29	Lawrence 14, 49
Higginbotham 49	Johnson 14, 20, 29, 41, 42	Lawson 42
Hill 13, 20, 29, 39, 49	Jones 14, 27, 29, 30, 39, 40, 42, 44, 45	Lazarus 9, 10, 11
Hilton 25	Jordan 37	Leatheman 14

Surname Index...First Quarter 2003
[A surname may appear more than once on a page]

Lee 14, 39	McCarty 45	Murdock 40
Legge 14	McCause 42	Murphey 40
LeGrand 48	McConnell 38, 49	Murray 44
Lemmons 30	McCormack 14	Murrill 15
Leonard 14	McCutcheon 43, 49	Murry 48
Leriomondie 48	McDow 30	Myers 15
Lewis 21, 30, 37, 40, 42, 49	McFall 46	Myley (or Myler) 15
Linxwiler 9, 10	McFarland 44	<u>Nash 42</u>
Littlejohn 40	McGavin 14	Natt 41
Littleton 14, 27	McGee 21, 49	Nelson 15
Livingston 39	McIntyre 45	Newgent (or Nugent) 15
Logan 44	McKenna 45	Nichols 15, 21, 38, 49
Long 14, 44	McKnight 21	Nicholson 45, 47
Longsfield 47	McMillen 41, 44	Noland 17
Lowry 14	McNeil 44	Norris 49
Loyd 30	McNeill 21	Nottingham 46
Luff 41	McRady 37	Nutt 37, 41, 44, 45, 49
Lythe 14	Meek 41	<u>Ogden 33</u>
<u>MaGee 14</u>	Meffre-Rouzan 17	Ogilvie 24
Maghee 48	Merrett 38	Oglesby 41, 42, 45, 49
Mallory 45, 49	Mervin 14	Olcott 45
Malone 14	Meyer 44	Oligive 37
Managan 37	Miles 30	O'Neal 15
Manchester 17	Miller 14, 21	Orear 15
Mareno 40	Millican 14	O'Reilly 15
Markham 42, 49	Minge 34	Otis 44
Marks 14, 38, 42	Minor 30	Overton 3
Marshall 47, 48	Mitchell 30	Owens 15
Martin 38, 40, 45	Mixen 14	<u>Page 38, 40</u>
Matheney 21	Moore 15, 27	Palmer 46
Mathes 37	Mooring 46	Parham 21
Mattie 45	Morehead 37	Pariet 37
Mattle 48	Morring 38	Parker 21, 39, 46
Maxwell 38	Morris 30, 38	Parson 46
May 37, 39	Morrow 41	Parsons 21, 40
Mayo 21	Mosley 49	Partition 40
McAdams 14	Mott 15	Patrick 46
McCall 14	Mullen 43	Patterson 4, 43, 44

Surname Index...First Quarter 2003

[A surname may appear more than once on a page]

Paxton 40	Ray 38	Scales 49
Peace 48	Read 40	Schenick 39
Peak 15	Redd 30	Schick 35
Pegran 40	Reding 15	Scott 30, 42, 43, 44, 45
Pelt 15	Redus 45, 47	Scroggin 39, 44
Peltaway 44	Reed 30, 42, 45	Scroggins 39
Penick 46	Reese 21	Seay 21
Peniston 17	Rendall 40, 46	Selby 15
Penny 21	Reynaud 17	Seldon 48
Peoples 48	Reynolds 45, 47, 48	Sewall 41, 42, 43, 44
Person 42	Rhodes 21	Sewell 38, 46
Peter 21	Rice 41	Shanks 41
Philips 15	Richmond 15, 21	Sharp 40
Phillips 37	Ridgway 38	Shaw 47
Philyen 49	Ritchie 15, 45	Sheldon 37
Pickens 37, 39	Roach 46, 48	Shelton 39, 40
Pickett 31, 32, 42, 48	Robbins 28	Sherbett 15
Pitman 15	Robertson 41	Shows 38
Plangue 47	Robeson 46	Simmons 9, 11, 40
Poindexter 41	Robinson 21, 30, 39, 41, 44	Sims 30
Polivka 9, 11	Robson 37, 43, 49	Smedler 30
Porter 30, 43	Rogers 15, 47	Smith 15, 27, 30, 37, 38, 41, 45, 46, 47, 48
Powell 48, 49	Rose 15	Snow 15
Prescott 41	Ross 47	Somville 21
Pules 39	Roth 47	Sowell 21, 42
Pyke 9, 10, 11	Rowland 48	Sparks 15
<u>Quillar 21</u>	Roysdon 45	Spates 16
<u>Rabum 15</u>	Rucker 21	Spears 16
Rachal 15	Ryan 15	Spencer 16
Rachel 47	Rye 43	Spilker 35
Radford 21	<u>Sale 45</u>	Sprott 49
Ragsdale 45	Saliers 15	Stallings 16
Raisen 15	Salmon 15	Stell 16
Rambo 46	Sanchez 15	Stephens 49
Ramsey 15	Sanderford 49	Stephenson 39
Randall 46	Sanders 15, 21, 30	Sterling 16
Randolf 17	Sandidge 23, 39	Stevens 21
Ranfroe 49	Savannah 21	Stills 30

Surname Index...First Quarter 2003

[A surname may appear more than once on a page]

Strickland 28	Wadell 49	Woolridge 48
Strychland 16	Wadley 30	Wooten 47
Stuart 16	Waggoner 38	Works 16
Sullivan 40	Wagoner 37	Wyche 46
Summerville 21	Waldron 45, 49	<u>Yearlock 47</u>
Sutton 16	Waling 45	Young 16, 40, 42, 44, 45, 47
<u>Tabor 49</u>	Walker 16, 43, 49	
Talmdage 41	Wallace 16, 37	
Tatcher 44	Waller 27	
Taylor 21, 30	Walsh 48	
Templeton 21	Ward 48	
Terrant 16	Wardlaw 30	
Terrell 39	Wardley 30	
Tessier 4	Ware 22	
Tharp 38	Warren 38	
Thomas 16, 21	Washington 24	
Thom 44	Watson 43, 44, 47, 48	
Tidwell 24, 25	Watt 22	
Tiggue 30	Watts 16	
Toca 17	Weems 16	
Trabue 38	Weiland 27, 28	
Tracy 16	Welch 16, 39, 45	
Tucker 43	Wesley 24	
Turner 35, 44	Wheelington 22	
Tyas 22	White 16, 45	
Tyson 40	Whitney 22	
<u>Uzee 16</u>	Wiggins 43	
<u>Vanbidder 48</u>	Wildy 37	
Vance 33, 34, 42, 43	Williams 5, 16, 22, 30, 43, 45, 47, 48	
Vaughan 16, 22	Williamson 16, 38, 41, 43, 49	
Veness 16	Willis 30	
Vercher 30	Wilson 22, 35, 39, 40	
Vesey 16	Winans 47	
Votlucka 9, 11	Winter 40	
<u>Waarren 16</u>	Wise 40	
Waddell 38	Wodiker 9, 10	
Waddle 37	Wood 45	
Waddy 37, 42	Woods 18, 22, 35	