



VOLUME 39

FOURTH QUARTER 2005

NUMBER 4

PUBLISHED QUARTERLY BY

ARK-LA-TEX GENEALOGICAL ASSOCIATION, INC.

P.O. BOX 4463
SHREVEPORT, LOUISIANA 71134-0463

THE GENIE

VOLUME 39

FOURTH QUARTER 2005

NUMBER 4

TABLE OF CONTENTS

FEATURES

- 152 Wild Lucia
By Dale Jennings
- 154 New Members
- 155 Presidents of the Ark-La-Tex
Genealogical Association, Inc.
- 156 From the Editor's Desk
- 157 Bienville Parish Assessment Roll for
1875
By Willie Ray Griffin
- 163 Exchange Periodical Review
By Constance Whatley
- 164 Good News
- 164 A Dream Comes True
- 165 The Early History of Benton, LA
By Dale Jennings
- 172 Marrying Off Your Daughter in the
17th, 18th or 19th Centuries
By Heather McEntee
- 173 Faltine Cemetery, Gloster, DeSoto
Parish, Louisiana
By Isabelle Woods
- 183 Faltine Baptist Church, Keatchie,
DeSoto Parish, Louisiana (Photo)

- 185 Thomas Jefferson Martin
By Constance "Margie" Whatley
- 186 Historic Shreveport
- 188 The True Story: Hatfields and
McCoys
By Jerry Hatfield
- 189 The Son of John McBride and His
Descendants: "James Louis McBride"
By Herman Weiland
- 192 The Abney Family
By Willie R. Griffin
- 196 The Murphy Family
By Michael Walter Downs
- 198 Murphy Family Group Sheet
By Victor Chambliss Rose
- 200 Membership Renewal Time

DEPARTMENTS

- 151 The President's Message
- 184 Book Review
By Lynda Methvin
- 184 Queries
By Isabelle Woods

ARK-LA-TEX GENEALOGICAL ASSOCIATION, INC.

Post Office Box 4463

Shreveport, Louisiana 71134-0463

The *Ark-La-Tex Genealogical Association, Inc.* is a non-profit, non-sectarian, non-political, educational organization dedicated solely to the cause of genealogy. This organization is governed by these purposes:

To collect, preserve, and make available genealogical materials, documents, and records; to encourage an interest in genealogy and to sponsor educational programs for its development; to promote and publicize the City of Shreveport, Louisiana, as a major genealogical research center for genealogists and historians; to cooperate with and assist all other genealogical, historical, and patriotic societies in the furtherance of these purposes; to compile and publish a quarterly composed of records and data related to the science of genealogy.

The *Ark-La-Tex Genealogical Association, Inc.* meets on the second Saturday of each month from 1:00 p.m. to 3:00 p.m. at the Randle T. Moore Senior Citizen Center, 3101 Fairfield Avenue, Shreveport, LA.

Dues for membership from January 1 through December 31 of each year in the *Ark-La-Tex Genealogical Association, Inc.* are \$20.00 for an Individual Membership and \$25.00 for an additional family member, same household, (one quarterly per household).

All members receive four issues of The GENIE, which is published quarterly.

The *Ark-La-Tex Genealogical Association, Inc.* will publicize a book of genealogical interest in The GENIE when submitted by the publisher or an author. These books are then donated to the Shreve Memorial Library, Broadmoor Branch Genealogy Department, 1212 Captain Shreve Drive, Shreveport, Louisiana 71105, where they are made available to the public. The Ark-La-Tex Genealogical Association, Inc. periodically donates other genealogical material to this library.

The *Ark-La-Tex Genealogical Association, Inc.* welcomes queries, which are published free in The GENIE. A query must be no more than seventy (70) words, either typewritten or legibly handwritten.

BOARD OF DIRECTORS (2005)

President	Raymon Owens	r.owens@worldnet.att.net
First Vice President	Jim Johnson	jjohnson747@cox.net
Second Vice President		
Recording Secretary	Cynthia D. Millen	millencndyl@wmconnect.com
Corresponding Secretary	Victor C. Rose	vcrnels@aol.com
Treasurer	Herman L. Weiland	hweiland@bellsouth.net
Trustee (2006)	Mae Feinberg	maecarey@aol.com
Trustee (2006)	Constance Whatley	cwhatley1@sport.rr.com
Trustee (2005)	Dorothy Turner	dtu1996719@earthlink.net
Trustee (2005)	Betty McCabe	bgmmccabe@aol.com
Past President	Victor C. Rose	vcrnels@aol.com

PUBLICATION (THE GENIE)

Editor	Willie R. Griffin	wraygriffin2@netzero.net
Book Reviews	Lynda Methvin	
Queries, Typing & Indexing	Isabelle Woods	
Printing	Victor C. Rose	
Labels	Michael Broussard	
Bulk Mailing	Herman Weiland	
Bulk Mailing	Reed Mathews	

ALTGA COMMITTEES

Hospitality	Thelma Sabbath	(318) 635-3637
Hospitality	Cynthia D. Millen	(318) 929-2983
Telephone	Vernell Rose	(318) 687-3673
Finance	Willie R. Griffin	(318) 631-6031
Programs	Marguerite Loftin	(318) 746-4598
Exchange	Constance Whatley	(318) 861-4336
Education		
Web Page	Jim Johnson	(318) 746-1851
Seminar	Jim Johnson	(318) 746-1851
Membership	Constance Whatley	(318) 861-4336

Visit our website: <http://www.rootsweb.com/~laaltga/>

THE PRESIDENT MESSAGE

As I write this, I am thinking how nice it would be if I could decorate the edges of this page with some mistletoe and hollies. It is the season. But, alas, I do not have the talent to do this on my old computer. So many of our members have made this a good year and have continued to work. Seldom did anyone turn down the call to help. That's why it is a wonderful season.

The 50th Anniversary is really great for our Association. It doesn't come cheap. When thinking of 50th Anniversaries, I decided to go back into my family histories and count the number of kinfolks that had celebrated theirs. I found that most that did not were those that lost their mate because of death. That's not like it is in these days.

So, as we move forward there are things to be done. There are those that are already working on some really good programs for 2006. Can you tell me of any that you would like to have? Come on now, don't be bashful.

Also I would remind everyone that you make a difference. Our main focus after the good programs is to keep this Association growing. This is something that every one of you can do. Invite friends to come with you. What's that old Christmas song? O yeah, "Go tell it On the Mountain". Could that be our theme to boosting our membership? Try it and see.

Thanks to everyone for the great teamwork in 2005. *We look forward to the New Year.*

Sincerely,



Ray Owens

WILD LUCIA
By Dale Jennings

"Wild Lucia" has been written about, but it seems that little historical research has been done. Most of the focus has been on the legend surrounding the unusual name. Goodloe Stuck featured Wild Lucia in his "Heritage Scrapbook" column in the Shreveport *The Times* on May 27, 1984. He found that two old men (unnamed) from north Caddo Parish had passed along what they remembered hearing long after the occurrence. One of those sources was undoubtedly Mr. R. T. Douglas, who first came to the area in 1891. In 1957 he wrote about what he had heard concerning an old mentally unbalanced Negro-Indian woman known as Wild Lucy or Wild Lucia (LSU-Shreveport Archives and Special Collections). She was said to have roamed the woods at will and lived in a cabin near Red River. With the coming of the steamboats, the landing there was called Wild Lucia, as was the property along the bank. Stuck must have gotten the rest of the Lucia legend from his other source. This demented or very eccentric mixed-blood woman was said to have lived deep in the densely wooded swampland on an old loop of the river. Also, the early steamboat captains learned not to stop along the bank of that loop to cut firewood for their boilers lest they be shot at by "Wild Lucia."

True, the little community center and plantation on Red River above Shreveport bore the name "Wild Lucia." However, that was not always the case. The 428-acre plantation was called the "John H. Marks Place" when sold by James Marks, Sr., to Joseph C. Beasley in 1877. John F. B. Glenn, the riverboat pilot who charted the Red River landings in 1879 and 1890, identified the plantation landing as "Joe Beasley" in 1879 (LSU-Shreveport archives). The entry was lined out and changed to "Wild Lucia," but it is not known when that change was made. Beasley was a 30-year-old Shreveport cotton buyer when he sold the property to John H. Nattin in 1880. The plantation was called "Wyaluson Place" in the conveyance. The Red River Survey map of 1887 (Sheet No. 14), also in the LSU-S archives, identified the plantation as Wild Lucia. But conversely, Captain Glenn called the landing "Wya Lucing" on his second navigation chart dated February 1890. The little community center at the river landing became "Wild Lucia" officially with the establishment of a post office there at the store later that same year.

"Wyalusing" was a very real place in northeastern Pennsylvania. The Wyalusing Rocks Historical Site was a Native American look-out point commanding a spectacular view of the Susquehanna River basin far below. The little town of Wyalusing and the "French Azilum" are tucked into the valley nearby. Queen Marie Antoinette's supporters at the time of the French Revolution hoped that she would be spared, and would be allowed asylum in this country. The Wyalusing Rocks and French Azilum overlooks are on U.S. Route 6 above the valley. The centuries-old "Great Warrior Path," a Native American trail leading north to the lake region and south to the Carolinas, passed

through this area. Wyalusing has been translated to, "where the old man sits." The Wild Lucia legend has been much better preserved than any Wyalusing connection.

The Marks family bought thousands of acres from the government on both sides of Red River in the initial 1839 land auctions and shortly thereafter. The Marks and several other moneyed families early to the area could afford to invest in the low, often swampy and easily flooded land on the Caddo Parish side of the river. This alluvial land between present-day Belcher and Gilliam promised good future returns when it could be cleared, drained and leveed for cotton land. Most of these families lived on the higher ground in Bossier Parish where they could realize more immediate results from planting. Whereas the Picketts, Gilmers, Dicksons, Adgers, Marks and others came with ready funds, John H. Nattin and the Sentells made their money as merchants, allowing them to later acquire planting land. George W. Sentell began by operating mercantile stores for James B. Gilmer at present-day Benton and Collinsburg before buying out the Collinsburg business. Nattin got his start clerking for Sentell at Collinsburg, then became a partner with George's brother, Nathan Wesley, before buying out his partner.

One of Captain Nattin's plantations in Bossier Parish was the "Lake Point Place," located at the inside tip of the loop opposite Wild Lucia. The Red River was not the barrier that it is now, the next bridge crossing north of Shreveport being some thirty miles distant. The Lake Place landing had a ferry across to Wild Lucia in Caddo Parish. A great many of the other landings had ferries, and one could travel to cross landings by steamboat. Nattin had opened another store at his Wild Lucia landing by 1890, and had James C. Belcher managing both the plantation and the store, according to the "Biographical and Historical Memoirs of Northwest Louisiana." Wild Lucia had a physician, Doctor Elisha J. Hall, probably at about this time, before he moved to the new town of Belcher in 1900. Nattin obtained a post office at the store on May 28, 1890, with William C. Campbell its first postmaster. Wild Lucia would have five more postmasters, to include Nattin himself between 1893 and 1896, before postal service was moved to Roswell on March 17, 1900.

The memorable overflow of Red River in 1892 would have been especially devastating to John Nattin's river loop plantations. That and the great financial panic of 1893 brought ruin to all but the most financially solid. The economic collapse was especially disastrous to the merchants. Nattin was unable to repay notes owed the Nathan Sentell estate and lost his Collinsburg mercantile business to the Sentell heirs. He lost all of his land in Bossier and Caddo at sheriff sale. John's friends the Sentells bought his plantations in both parishes at the forced sales. George and his brother Nathan's son, Nathan William, sold him back the Bossier plantations when he was able to reacquire them. He either chose not to or was unable to buy Wild Lucia back from George W. Sentell.

The Texarkana, Shreveport and Natchitoches rail line was brought down the Caddo side of Red River in 1899 changing the orientation of the area. The depots and little sidings attracted the populations of the small communities away from the river. This coincided with the reclamation of the fertile plain along the railroad corridor for

large scale agriculture. Wild Lucia lost its post office, store business and doctor to the new towns of Roswell and Belcher. The landing site itself was lost to the ever-shifting Red River and the loop, cut off from the river, became another "old river" crescent lake on the Caddo side.

George Washington Sentell died in 1896. Claudia Ann Sentell bought the greater part of the estate, to include the Kansas and Wild Lucia plantations, from her mother and siblings. After marrying William L. Dickson and becoming widowed, Claudia sold the Wild Lucia Plantation to Abner N. Cavett in 1914. Cavett sold the plantation to James W. Lynn in 1917. Lynn began as an overseer for John Sentell around the turn of the twentieth century and gradually acquired his own planting land. Wild Lucia was consolidated with other Lynn properties and has lost its identity in great fields of corn, its current crop. The property is still in the Lynn family, although over one hundred acres of the Wild Lucia tract has been lost to the river.

We Want to Welcome Our New Members...

Claire C. Davis, 816 East Rimes Circle, Monroe, LA 71201-3926
Researching: Conway, Wall, Colvin, and Skinner

Raymond C. Kidd, 1605 Airline Drive, Bossier City, LA 71112-2753
Researching: Guisinger, Herald, Andrus, and Turner

Wanda W. Fuglar, 1202 E. Pinecrest Drive, Marshall, TX 7567-7350
Researching: Erambert, Sheffield, Carter, and Crutcher

Leota Crider, 4407 S. Grand Street, Monroe, LA 71202-6323
Researching: Moffett, Roller, Reaves, and Lane

Presidents of the Ark-La-Tex Genealogical Association, Inc.

Since its inception some 50 years ago, the following persons have served as the President of the Ark-La-Tex Genealogical Association, Inc.

<u>Year(s)</u>	<u>President</u>
1955 - 1957	Lester White
1958	Fern Ainsworth
1959	Lester White
	<i>[Louise Barnett, Vice President, presided over most meetings in 1959.]</i>
1960 - 1964	Louis Barnett
1965 - 1966	Ben E. Achee, Jr.
1967	R. T. Colquette
1968	David Washburn
	<i>[David Washburn died in office. Waldo Moore, Vice President, served briefly and resigned. E. M. Tipton served for remainder of term, 1969.]</i>
1969 - 1972	E. M. Tipton
1973	Dr. T. V. Holmes, Jr.
1974 - 1976	M. L. Nance
	<i>[Served unexpired term of Dr. T. V. Holmes, Jr., 1974.]</i>
1977 - 1980	Veda Thornhill
1981 - 1984	Fern Ainsworth
1985	Margery Wright
1986 - 1990	Marguerite Loftin
	<i>[Served unexpired term of Margery Wright, 1986.]</i>
1991 - 1992	Carroll H. Goyne, Jr.
1993 - 1994	Victor C. Rose
1995 - 1996	Charles H. Pratt
1997 - 1998	Reed C. Mathews
1999	Alan Barlow
2000 - 2001	Marguerite Loftin
2002 - 2004	Victor C. Rose
2005	Raymond Owens

FROM THE EDITOR'S DESK

As an active member and supporter of the **Ark-La-Tex Genealogical Association**, I want to let you know that this past year has been a *landmark year* with *The Genie*.

There have been many good and exciting articles this year, all of which were possible because of the generosity of dedicated members like you.

The Publication staff of *The Genie* is always looking for good articles about genealogy. We are especially interested in articles concerning the Ark-La-Tex area. Since our publication is mailed to other genealogical organizations we need to keep our articles mainly about this area, however, we do occasionally accept articles on other areas.

Without a doubt *The Genie* offers the strongest array of genealogical articles of any publication in the area, and the *Genie* is welcoming to researchers.

We work hard to provide you with resources not easily found anywhere else, but materials that you will use and can rely upon in your research.

We know that **Genealogy** is a fascinating subject whether it is tracing a family history to establish eligibility in a patriotic society, or to make a contribution to the preservation of local and family history. It requires diligence, perseverance and imagination.

As the year ends, I am asking members who have not submitted an article before, for your help in the upcoming year, by sending good articles and/or copies of good documents to be considered for *The Genie* (publication). The following items will be considered for the *Genie*: *Bible Records, Biographies, Cemeteries Records, Church Records, Compiled Genealogy, Court and Courthouse Records, Deeds, Maps, Land Records, Newspaper Records, Obituaries, Pedigree Charts, Family Reports, Probate Records, Tax Records, Wills, etc.*

We want you to catch the vision and run with us and make a contribution that will make a difference in how genealogists access the records of the past, now and in the future.

The Genie has served genealogists for nearly four decades. Let's go for four more!

[Send Articles for publication to: *Ark-La-Tex Genealogical Association, Inc., Attn: Editor of The Genie, P.O. Box 4463, Shreveport, LA 71134-0463*]

Bienville Parish Assessment Roll For 1875

[The roll of taxable persons]

Abstracted by Willie Ray Griffin, 2004

(Continued from Third Quarter 2005)

Lewis, Auston	Margan, R. A.	McCullough, P. M.
Lewis, Dock	Markstain, Franze	McCullough, Willis
Lewis, G. C.	Martin, Emily Mrs.	McDaniel, George
Lewis, James	Martin, George	McDaniel, John Henry
Lewis, Julia A. Mrs.	Martin, J. W.	McDowell, Ed
Lewis, LaFayette	Martin, John	McDowell, J. G.
Lewis, Robert	Martin, S. Miss	McDowell, James
Lewis, Sam	Martin, Sam	McDowell, Warren
Lewis, Toney	Martin, Seneca	McDowell, William Est.
Lewis, William	Martin, T. J.	McElroy, W. T.
Lockett, A. E. Mrs.	Martin, W. A.	McGlawn, William
Loe, A. H.	Martin, Zechariah	McGraw, H. H.
Loe, S. P.	Maskburn, G. P.	McGraw, S.
Long, Henry S.	Mason, A. D.	McGraw, S. M.
Long, J. J.	Mason, Guss	McGraw, Thomas G.
Long, J. W.	Mason, Henry	McGuire, J. A.
Long, S. G.	Mathews, Charles	McGuire, J. L.
Long, Sam Mrs.	Mathews, G. W.	McInis, M. A. Mrs.
Louries, Henry	Mathews, J. R.	McInis, R. W. L.
Love, John A	Mathews, Jordan	McKeen, Allen
Low, D. H.	Mathews, P. H.	McKeithen, A. S. Mrs.
Low, F. M.	Mathews, W. A.	McKethan, J. G.
Low, G. W.	Mathews, William	McKinsey, John
Lucas, L. A.	Mays, Aaron	McLaughlin, July
Lucas, Martin	Mays, J. A.	McLead, William T
Luckey, William L.	Mays, Mary E. Mrs.	McLeland, S. R.
Luries, Tobe	Mays, Mathew	McNeal, Lewis
Lyles, John	Mays, W. C.	McNeal, Primus
Madden, A.	Mays, W. R.	McRey, James
Madden, J. L.	McCanothy, A. J.	McWrigh, Alfred
Madden, J. N.	McCoy, Alexander	Mellon, Oliver
Madden, Mary A. Mrs.	McCoy, Gilbert	Melton, J. W.
Madden, Mose	McCoy, J. C.	Melvin, G. W.
Madden, S. Mrs.	McCoy, J. P.	Menter, James Mrs.
Madden, W. L.	McCoy, P. M.	Mercer, G. H.
Malong, James	McCoy, W. C.	Merchant, Joseph B.
Mangham, Eumanuel	McCullen, Robert	Miller, Abraham Est. of
Manning, P. M.	McCullough, C.	Miller, E. J. Mrs.
Marbury, L. F.	McCullough, John	Miller, J. M.

Miller, Miles
Miller, Robert
Miller, T. J.
Mims, J. P.
Mingo, Joe
Mins, Charles
Minshew, H. P.
Misell, L. J.
Mitchell, Charles
Mitchell, George
Mitchell, Love
Mitchell, Martha J.
Mitchell, Slapleton
Mixon, O. G.
Mizell, D. J.
Mobley and Brothro
Monroe, Madison
Moody, James
Moore, Alfred
Moore, Calvin
Moore, Frank
Moore, G. W.
Moore, Hugh
Moore, J. W.
Moore, John
Moore, John
Moore, Malinda Mrs.
Moore, May
Moore, Moses
Moore, Presley
Moore, Richard
Moore, Sanford
Moore, W. R.
Moreland, W. C.
Morris, George
Morris, George
Morris, James
Morris, John'
Morris, Jordan
Morris, Ned
Morrison, Henry
Morrison, J. J.
Moseley, E. A. Mrs.
Moseley, Ed
Moseley, Muck
Moseley, P.

Mosely, J. B.
Moss, James
Moton, Robert
Munson, Jake
Murphey, Elias
Murphey, F. M.
Murphey, G. W.
Murphey, Jesse
Murphey, Joe
Murphey, John
Murphey, Thomas L.
Murphey, W. H.
Murphey, William
Murray, E.
Myers, L. J.
Myers, Robert
Myers, Smith
Myrick, M. E. Mrs.
Myzell, J. T.
Narred, W. M.
Neal, Charles
Neal, S. T.
Neal, Thomas
Nelms, J. W.
Nelson, A. S.
Nelson, C.
Nelson, J. D.
Nepolean, Putler
Netles, H. M.
Nettles, W. T.
Newman, Harvey
Newson, A. J.
Nichols, Joe
Nichols, Sam
Nix, Jasper
Nobles, Sam
Nolan, E. H.
Noland and Hammett
Nolen, Stephen
Noling, John W.
Norman, D. R.
Norman, J. M.
Norris, Benjamin
Norris, G. M.
Norris, J. S.
Norris, P. A.

Oden, A. E.
Oden, J. A.
Olivant, Bryant
Oliver, Larkin
O'Neal, J. L.
O'Neal, Jerry
O'Neal, Sol
Ooutz, J. W.
Outen, Peter
Overton, A. H.
Owens, H. P.
Owens, S. L. Est. of
Owens, W. T.
Ozley, John H.
Ozley, William G.
Page, Abraham
Page, T. L.
Page, W.
Page, W. J.
Page, W. N.
Palmer, J. P.
Parham, J. T.
Parham, W. S.
Parish, James
Park, James E.
Park, W. N.
Parker, Jack
Parker, T. A.
Parnell, P. F.
Pate, J. G.
Patterson, Gideon
Patterson, W. C.
Paul, Calvin
Paul, James
Paul, Madison
Paul, Peter
Paul, Sam
Payne, R. C.
Payne, Williams
Pearce, Benj.
Pearce, Isham
Pearce, J. L.
Pearce, Lucinda Mrs.
Pearce, S. D.
Pearce, W. J.
Pearce, Wyatt

Pease, F. M.
Pennigton, J. M.
Pennington, Alfred
Pennington, J. J.
Pennington, W. H.
Pentcast, F. S.
Peoples, Parish
Peoples, Quitman
Perdew, J. R.
Perill, S. A. Mrs.
Perrett, W. J.
Perry, J. C.
Perry, James D.
Perry, John W.
Perry, Richard
Person, J. H.
Peters, Daniel
Pierson, J.
Pierson, M. C.
Pierson, W. H.
Piles, George
Pisses, Runben
Pitman, W. F.
Poland, H.
Poland, J. B.
Poland, R.
Poland, W. B.
Poland, W. M.
Poland, W. W.
Pool, E. B.
Porter, Howard
Portess, Nathan
Potts, Amos
Potts, Strafford
Pratt, L.
Pratt, V.
Preslar, Mary Mrs.
Preslar, W. C.
Price, Elizah
Price, John
Prince, James
Prothro, C. A.
Prothro, C. E.
Prothro, H. M.
Prothro, J. W.
Prothro, T. L.

Prothro, W. B.
Pruson, J. F.
Puckett, John A.
Pullig, J. K.
Pullig, S. W.
Pullig, T. A.
Pullin, H. B.
Pullin, L. M.
Pullin, R. J.
Pullin, W. A.
Pullin, W. R.
Pulpress, Jeremiah
Pushing, Benj
Pushing, Nelson
Raborn, James
Raburn, L. J.
Raburn, Mary Mrs.
Raburn, Rebecca
Radhimer, W. W.
Rainey, Henry
Rambean, Abran
Rambean, Bill
Randol, J. J.
Randol, Mingo
Ransom, Daniel
Rasco, Thomas
Ratcliff, J. T.
Ratcliff, W. S.
Rawlins, John
Rawlins, M. H.
Rawson, F. T.
Ray, J. W.
Ray, W. S.
Reader, Richard
Readhimer, L. J.
Reagan, John
Reed, George
Reed, Hal
Reed, W. J.
Reeves, P. J.
Reeves, Elizah
Reeves, Freeman
Reeves, L.
Rentz, S. P.
Reynolds, Laskin
Rhodes, Augustus

Rhodes, Collin
Rhodes, Milton
Rhodes, Primus
Rhodes, Richard
Rhodes, Toliver
Rice, Nelson
Rice, Newton
Richardson, C. E. Mrs.
Richardson, Houston
Ricks, W. M.
Riddle, D. N.
Rigdon, T. S.
Riley, Charles
Roane, J. C.
Roberson, B. F.
Roberson, Daniel
Roberson, Irving
Roberson, J. W.
Roberson, John W.
Roberts, A.
Roberts, E. G.
Roberts, Liphus
Robinson, E. C.
Robinson, J. G.
Robinson, J. S.
Rochell, Stephen
Rodding, Thomas
Roden, F. M.
Roden, J. E.
Roden, L. G.
Rogers, Alexander
Rogers, Berry
Rogers, C.
Rogers, G. W.
Rogers, J. C.
Rogers, James
Rogers, Sam
Rolley, G.
Ross, A. J.
Roundtree, Harper
Roundtree, Jesse
Row, Taylor
Row, W. T.
Rowell, C. M.
Ruff, T. F.
Rushing, Sam

Sale, W. M.
Sale, W. P.
Sannnders, W. W.
Sapio, Joe
Scheen, J. H.
Scoggin, C. R.
Scoggin, S. A.
Scott, Caroline Mrs.
Scott, G.
Scott, J. H.
Scott, Pat
Scott, Thomas
Scott, Walter
Scroggin, J. M.
Scroggin, J. Mrs.
Serpell, Richard
Shaw, C
Shaw, S. J.
Shehee, A. B.
Shehee, Henry
Shehee, W. D.
Sheppard, A. C.
Sheppard, D. N.
Sheppard, Ellis
Sheppard, Henry
Sheppard, Isaac
Sheppard, Isaac
Sheppard, Joe
Sheppard, Luke
Sheppard, Nat
Sheppard, W.C.
Sherwood, E. W. Jr.
Sherwood, Edwin J.
Sheshee, Mary Mrs.
Shively, Amos
Shively, Cornelius
Shively, F. M.
Simeon, Dock
Simmons, D. M.
Simmons, L. M.
Simpson, Alexander
Sledge, H. C.
Sledge, M. D.
Smart, Nathaniel
Smelley, Caroline Mrs.
Smelley, J. H.

Smelley, J. H.
Smith, Amanda
Smith, Denis
Smith, Dillard F.
Smith, Dock
Smith, E. A. Mrs.
Smith, Elizabeth Mrs.
Smith, F.
Smith, Gabriel
Smith, Green
Smith, H.
Smith, J. B.
Smith, J. D.
Smith, J. F.
Smith, J. G.
Smith, J. J.
Smith, Joe
Smith, John
Smith, John
Smith, N.
Smith, N. M.
Smith, N. P.
Smith, Peter
Smith, R. A.
Smith, R. H.
Smith, Rebecca Mrs.
Smith, Robert
Smith, Thomas
Smith, Turner
Smith, W. R.
Smith, W. T.
Smith, William
Sneed, William
Southern, E. E.
Southern, J. H.
Southern, W. E.
Spinks, J. D.
Spinks, S. H.
Sprawls, C. F.
Sprawls, J. J.
Sprawls, M. W.
Sprawls, Samuel
Sprawls, T. M.
Sprawls, W. L.
Stafford, Edmund
Stall, August

Stall, R. H.
Stamps, William
Stanley, John
Stanley, John
Stanley, Noah
Stanley, Noah
Staples, Ralph
Starks, Oliver
Starks, Prince
Starks, Sidney
Stephens, Lewis
Stephens, Perry
Stevenson, Julius
Steward, J. E.
Stewart, E.
Stewart, J. L.
Stewart, J. W.
Stewart, James
Stewart, John
Stewart, John T.
Stewart, L. M.
Stewart, S. M.
Stewart, T. J.
Stewart, W. F.
Stewart, Wallace
Stover, Mat
Strause, Reuben
Streetman, H. M.
Stroman, Lilleton
Strouther, Charles
Struman, Damps
Stweart, A. H.
Sullavan, J. C.
Sullivan, J. H.
Sullivan, William
Sutton, J. T.
Sutton, Oliver
Swank, Thomas
Talbot, Ivey
Taylor, Green
Taylor, Hartwell
Taylor, Henry
Taylor, J. F.
Taylor, J. J.
Taylor, Jacob
Taylor, Josiah

Taylor, Lawrence
Taylor, Moses
Teacle, J. O.
Tenison, L. C.
Theus, Geo Henry
Theus, M. A. Mrs.
Theus, Nat
Thomas, Z. G.
Thomas, B. F.
Thomas, Benj.
Thomas, C. F.
Thomas, Charles
Thomas, D. C.
Thomas, Elbert
Thomas, J. L.
Thomas, James
Thomas, L. D.
Thomas, Mealy Mrs.
Thomas, N. L.
Thomas, Z.
Thompson, A. F.
Thompson, Andrew
Thompson, Bowman
Thompson, Frank
Thompson, Green
Thompson, Henry
Thompson, James
Thompson, Perry
Thompson, R.
Thompson, Thomas
Thompson, W. S.
Thornton, N. W.
Thurmond, C. A.
Tibbs, Thomas
Tilley, B. W.
Tilley, C. C.
Tilley, J. M.
Tilley, N. A.
Tilley, T. F.
Tilley, W. S. Mrs.
Tillman, David
Tilly, G. D.
Timmons, Hariel Mrs.
Tobin, Aaeon
Todd, B. T.
Todd, M. C.

Todd, T. C.
Tooke, H. V.
Tooke, J. F.
Tooke, J. W.
Tooke, James A.
Tooke, Joe
Tooke, John
Tooke, John F.
Tooke, T. A.
Trip, David
Tucker, A.
Tucker, Peter
Tullis, J. G.
Tullis, J. M.
Tullis, M. W. Mrs.
Tullis, Wright
Turner, J. J.
Turner, Lawrence
Turner, Sam
Tyler, Henry
Tyler, W. M.
Underwood, Adolphus
Underwood, E. A. Mrs.
Underwood, George
Underwood, John
Underwood, Lewis
Vale, J. M.
Vales, Jeremiah
Van, Adam
Vance, Samuel
Vansant, J. W.
Vernon, F. D.
Vernon, John S.
Versant, Emanuel
Vick, Joe
Vickers, Benj
Vickers, H. A.
Vickers, J. L.
Vickers, John L.
Wadkins, Anderson
Waldon, R. L.
Walen, Salomon
Walker, Elbert
Walker, G. W.
Walker, Jerry
Walker, Joe

Walker, Miss A. C.
Walker, T. A.
Walker, William
Wall, Jesse
Wall, L. A. Mrs.
Wall, W. O.
Walton, Conelieus
Wardlow, J. L.
Wardlow, L. B.
Wardlow, Ned
Warren, A. M.
Warren, E. N.
Warren, J. J.
Warren, W. A.
Washington, Geer
Washington, Ned
Washington, Thus
Waters, Rubin
Watkins, Merriman
Watson, David
Watson, Jordan
Watts, J. B.
Watts, J. R.
Watts, James A.
Watts, Roberts
Webb, J. P.
Weeks, W. C.
Weir, G. E.
Welch, Nelson
Whisner, George
White, D. C.
White, Elizabeth Miss
White, J. J.
White, J. V.
White, James P.
White, M. E.
White, Thus T.
White, Timothy
White, W. J.
Whitley, J.
Whitley, T. A.
Whitley, W. A.
Whitlow, Faust
Whitlow, G. C.
Wiggins, J. D.
Wiggins, James

Wiggins, Master
Wilder, J. W.
Wilkerson, F. Y. Mrs.
Williams, A.
Williams, A. M.
Williams, Cawline
Williams, George
Williams, Guss
Williams, Hicton
Williams, James M.
Williams, John
Williams, Paul
Williams, Riley
Williams, Sam
Williams, Savannah
Williams, Thus
Williamson, J. H.
Williamson, Miss. D.
Williamson, L. F. Mrs.
Wilson, Andy
Wilson, Anthony
Wilson, Cary
Wilson, Elizabeth Mrs.
Wilson, Green
Wimberly, Claud Mrs.
Wimberly, E. S.
Wimberly, J. L.
Wimberly, Jackson
Wimberly, Richard
Winfield, J.
Wingard, Allen
Wood, B. S.
Wood, G. F.
Wood, John
Woodard, Asa
Woodard, Isaac
Woodard, James
Woodard, Landy
Woodard, Stephen
Woodard, T. E.
Woods, C. M.
Woods, J. A.
Woods, J. W.
Woods, Jesse
Wooley, R. F.
Wooly, Mrs Mary

Wooly, R.
Worsham, L. M.
Worsham, W. S.
Wright, Ben
Yearwood, C. S.
Young, J. M.
Young, J. R.
Young, James Est. of
Young, Mark
Young, William
Youngblood, D. L.



EXCHANGE PERIODICAL REVIEW
Compiled by Constance Whatley

Many of the periodicals we receive, in exchange for "The Genie" provide up-to-date ideas on how to solve your research challenges. Always search the periodical published in your geographical interest area, but don't overlook other periodicals that may include articles of general interest to the researcher or about families that have migrated. These periodicals are located at the Broadmoor Branch Library, Shreveport, Genealogy Section.

Valley Leaves, Volume 39, Numbers 3 & 4, published by The Tennessee Valley Genealogical Society, Huntsville, Alabama on page 167 is the 1870 Madison County Federal census. This Madison County Census was inadvertently included in the Marengo County census, reel Number M593-28. It is for District 4, Meredionville Precinct, Madison County, Alabama.

Carroll County Genealogical Quarterly published by Carroll County Genealogical Society, Carrollton, Georgia, pages 44-48 has the first listing of Tax Digest of Carroll County attempting to reconstruct the missing 1890 census (Carroll County Tax Digest, Page 110, Shiloh District, Georgia Military District, Post Office: Burrwell.)

Ancestry Quarterly Bulletin published by Palm Beach Society, P.O. Box 1746, West Palm Beach, Florida reprinted an article entitled: THE END OF MICROFILM. It states That the LDS Church is moving to digital imaging. The focus is shifting from microfilm to making digital images in the original repositories with no microfilm involved.

Rabbit Tracks, Volume 23, Number 2, Summer 2005 published by Conejo Valley Genealogical Society, P.O. Box 1228, Thousand Oaks, California on page 27 has:

- (1) The website address, prices and categories for Tennessee death certificates for year 1902-1912 and 1914-1954.
- (2) An article entitled: Google and Genealogy, Topeka Genealogical Society, April 2005 features a book review of: French and North American marriages 1600 - 1800.

Tennessee Ancestors, Volume 21, Number 1, April 2005 presents an article authorized by Dr. George Sweitzer. This initial contribution is the first in an extended series dealing with the genealogical uses of the internet.

Heart of Texas Records published by Central Texas Genealogical Society, Volume XLVIII, Number 2 includes the tax roll for McLennan County for 1890 on pages 55-78.

Footprints, published by Fort Worth Genealogical Society, Fort Worth, Texas, pages 113-122 contain a list of approved Civil War applications for Tarrant County, Texas.

Valley Leaves, Volume 40, Issue 1, September 2005, published by Tennessee Valley

Genealogical Society, Huntsville, Alabama on pages 6-13 is an article entitled "Southern Claims Commission established by the U.S. Government to reimburse northern sympathizers living in The South for losses sustained at the hands of Union Forces during The Civil War. This particular claim is unusual because it gives names and explicitly describes dogs being set on southern deserters, killings, thefts, and other atrocities. It gives information on families that can be found nowhere else.

Good News...

Good news for those of us who use the LDS records for family research. They are planning a massive undertaking to make all of their records available via internet...free. It won't happen overnight, but it is exciting news. You can read about it at the following web address: <http://deseretnews.com/dn/view/0,1249,605153189,00.html>

A Dream Comes True...

On August 1, New York State's first immigration processing center, Castle Garden, celebrated its 150th birthday. To commemorate this special occasion, the Battery Conservancy launch its new website – CastleGarden.org – where researchers can do online searches of the expansive database of Castle Garden passenger lists!

Castle Garden first opened its doors on August 1, 1855 and would see 8 million immigrants pass through her doors in her 34 year reign! The passenger lists pertaining to these 8 million immigrants are currently found at the National Archives, and they are NOT indexed.

This monstrous project has been led by Dr. Ira Glazier, former Director of the Center for Migration Research at the Balch Institute for Ethnic Studies and Immigration.

Truly a dream comes true for all those whose ancestors passed through the Castle!

To learn more about the Castle Garden website, and to be notified of its official launch, please see: <http://www.CastleGarden.org>

THE EARLY HISTORY OF BENTON, LA

By Dale Jennings

Benton was incorporated as the "Town of Benton" by state legislative Act 23 on March 2, 1876. The town was to comprise a one square mile area centered on the crossing of the "Shreveport and Arkansas and Monroe and Red River roads." The act authorized the election of a mayor and five councilmen. That election was to be held on the first Monday in November 1876, after fifteen days notice by public advertisement. The *Bossier Banner* did not announce the election in October; nor were election results announced in November. No indication can be found that town officials were elected or that a Benton municipality was established.

The purchase of the Benton mercantile store by Abraham Flaxman in February 1878 began a succession of ownerships by Jewish merchants. Flaxman sold the property in January 1879 to Abraham Harris of Webster Parish. In March 1879 Harris sold the store to Marx Bluestein, who was enumerated in the 1880 census in Ward 5. A snapshot of Benton taken by the 1880 census report shows the town to be primarily a small trading center. Its three Polish-born, and no doubt Jewish, merchants are Bennett Williams, Harris Benjamin, and Leon Grovaner(?). The latter has a German-born clerk, Benjamin Nelson. None are property owners.

The other merchants are Joseph E. Adger, Price Terry and Preston Kyles. Joseph Adger, just appointed postmaster, is boarding a store clerk, Jacob A. Land, a school teacher, George L. Glenn and the physician, George Wise. He is not a Benton property owner. This all indicates that the post office has probably been moved across the street to Carrier's "store and hotel" and that Adger is now its proprietor. Preston Kyles, a mulatto grocer, owns a grocery store on the edge of the numbered town lots. He has a clerk, Edmond Chambers, who is also mulatto. Lee Carrier is a farmer and is boarding another physician, James Campbell. James Woodruff is a baker, Christopher Martin is a apiarist (beekeeper), and James A. Larkin a constable (probably for the Ward 2 Justice of the Peace Court). George T. Fleming has "chills & fever" and has not worked for six months. In the spring of 1881 he is running ads for private schooling in his home for "all English branches and lessons in 'wax work' or lace making, if desired." He succeeded Joseph Adger as the Benton postmaster that November.

Marx Bluestein sold the Benton store to Sam and Henry Benjamin for \$1,500 in October 1883. The Benjamins sold it back to Bluestein in May 1884. At this time Charles Kingsley succeeded George Fleming as postmaster. In November, Henry Benjamin bought the "store and hotel" from Lee Carrier for \$1,325. Mr. Kingsley continued as postmaster. Mr. Benjamin bought the old store lot back from Bluestein for \$100 in March 1886. Nothing more is known about Charles Kingsley, only that he remained as postmaster until that office was moved to the new Benton town site in 1892. (Other postmasters not previously mentioned were John J. Scott (Oct 1872-Aug

1875), Adam Simon (Aug 1875-Jul 1876), James B. Woodruff (Sep 1878-Jan 1880) and R. Prather (Jan 1880-Mar 1880)).

The "Red River Male and Female School" was advertised in the December 23, 1859, *Bossier Banner* by its principal, Richard J. Hancock, as being "near Benton." It was probably near "Wallace Springs," three and one-half miles east of old Benton (the present site of the Old Red River Cemetery), but in the Benton postal area. Hancock was enumerated not far from there in the 1860 census. The Red River Baptist Church had relocated to the Wallace Springs in 1859 or 1860 from the Willow Chute community two miles south of old Benton. Most of the little Bossier Parish towns had a "seminary" or "academy" around mid-century. A copy of a letter written by Richard Hancock on October 28, 1860, can be found in the John Manry Collection, LSU-Shreveport Archives and Special Collections. He wrote, "I am teaching in this place. I commenced it last fall." And, "I commenced the last session on the 20th of February for 15 months." He said he expected to finish about the first of May (and enlisted for the war in June 1861). He stated in the letter that the school averaged 12 to 15 scholars, and that his salary, "comes from the treasury and I am not troubled to collect it."

In a true sense, "Old Benton" was likely a town in name only. Like the other little community centers in rural Bossier Parish, it was probably not a functional municipality. All were overshadowed by Shreveport, the regional cultural, commercial and banking center across the river in Caddo Parish. Bellevue – small, but sophisticated for Bossier Parish – was the exception. Besides being the parish seat of government, the town was incorporated, with a mayor, aldermen and municipal ordinances (shortly after its founding in 1843 according to the *Biographical and Historical Memoirs of Northwest Louisiana*). However, Bellevue had a big disadvantage in being far from the region's main artery of transportation and commerce, the Red River, and was poorly served by water and road. In 1871 the eastern third of Bossier was severed as a contribution to the new parish of Webster. This placed Bellevue on the eastern edge of the parish, isolated from both its physical and population center. In 1880 a bill was introduced and passed in the state legislature to let the electorate in Bossier have the option to choose a new parish seat. Bellevue fought hard for the next ten years to keep its courthouse. The courthouse was a plum envied by virtually every little village that could claim a central location in the parish, including Benton.

The legal and political maneuvering between Bellevue, Benton, Haughton, Coleville, Shady Grove, Canes (now Bossier City), Rocky Mount and Cottage Grove might be comical but for the wasted effort, disruption and ill feelings caused throughout the parish. The invalidated elections and related ongoing lawsuits, injunctions, court rulings and legal appeals are well illustrated by Clifton D. Cardin in his book, *Bossier Parish History – The First 150 Years. 1843-1993*. The contention was finally narrowed to Benton and Haughton. Although Benton was on the river, Haughton had gotten a railroad first, the east-west "Vicksburg, Shreveport and Pacific," in 1884. There was local support for a north-south railroad as well, an effort led by Samuel J. Zeigler. Mr. Zeigler had come to Bossier Parish from South Carolina as a young man in about 1870. He became store manager for Doctor Samuel Whitfield Vance in Doctor Vance's Shady

Grove Plantation store. Although now living in Shreveport, his greater interests were still in Bossier Parish. He had gotten a good start there by marrying into money, but being an industrious, progressive man, no doubt would have done well on his own. Zeigler became the son-in-law of the son-in-law of James B. Gilmer with his marriage to Sallie Vance, the daughter of Dr. Samuel W. and Mary Gilmer Vance. Mr. Zeigler's wife died young as had her mother, and much of the Gilmer fortune came down through the Gilmer maternal line to him and his minor children.

S. J. Zeigler's leadership, persistence and capital earned him the position of executive vice-president of the Shreveport and Arkansas Railway Company, a branch line of the St. Louis and Southwestern. Popularly called the "Cotton Belt," it connected Shreveport with Lewisville, Arkansas, and points beyond. Its track was completed down the Bossier Parish side of the Red River in 1888. Mr. Zeigler was also founder or co-founder of three of the parish's towns, Shady Grove (Vanceville), Plain Dealing and the new town of Benton. (Shady Grove became "Vanceville" in 1887 when in obtaining a post office, the name "Shady Grove" would have duplicated an existing post office designation). Shady Grove and Plain Dealing were developed on land inherited through his wife, Sallie Vance Zeigler. She had traded her inherited Buck Hall Plantation to her father for his Shady Grove Plantation, and had inherited a great part of the old George O. Gilmer Plain Dealing Plantation from her great uncle, George Edwin Gilmer. The latter plantation was a part of her mother's entitlement in the estate of her uncle, George E. Gilmer, whom her mother Mary had predeceased. Zeigler had early on made a good effort to secure the courthouse for Shady Grove by a generous offer of property. This was in the form of town lots, both for the courthouse itself, and to be sold for income to defray the cost of courthouse construction. Plain Dealing, one of the "new railroad towns," was too far from the center of the parish to be in contention. New Benton's quest for the parish seat of government will be told subsequently.

Elizabeth Fleming died and her Benton store tract property was inherited by her husband, Fleming. George T. Fleming ran lot auction notices in the *Bossier Banner* leading up to and including October 4, 1888. This was for the sale of his newly surveyed old Benton store tract lots. The announcement, given here in its entirety, is a good frame of reference in illustrating the competition not only for the courthouse, but for the town of Benton itself.

**BEAUTIFUL TOWN LOTS
ON THURSDAY, OCT. 11, 1888,
I will offer for sale at Public Auction, in the
TOWN OF BENTON,**

About 200 Business and Residence Lots, comprising the most beautiful part of the little town of Benton, situated Twelve Miles North of Shreveport, on the COTTON BELT RAILROAD.

BENTON is one of the Competing Points for the New Court house that will be built in the parish in the near future, and I think with a very fair prospect of success, and should Benton be the successful competitor, I believe I voice the sentiment of at least three fourth if not nine-tenths of

the voters of Bossier parish when I say that they would prefer that the Court house should be placed at or near the present town of Benton than to be placed at the depot. Having this feeling I have had the land surveyed into lots, and have left a beautiful square just one mile from the depot, and near the original spot selected by the engineer for the same while building the road.

Now should the people of Bossier parish see proper in case Benton is the successful competitor, to select this square for the purpose of building said Court house upon, I will in addition to giving them this square DONATE FIFTY of the resident lots that I have just had surveyed, which they can dispose of as they see proper and use the proceeds of the same for the purpose of defraying the building expenses of said Court house. Remember, the sale of lots will take place on OCTOBER 11, 1888. – Excursion rates of 4 cents per mile for the round trip or 2 cents per mile each way will be made to parties wishing to attend the sale. – Rates to apply between Camden, Ark., and Shreveport and Texarkana and Shreveport. – Tickets good returning October 12, 1888.

I am requested by the ladies of Benton and vicinity to say that an excellent dinner will be prepared on the grounds, the proceeds of which will be used for the benefit of the church.

G. T. FLEMING.

Local news was not the *Banner's* strong suit. Subsequent issues made no mention of the lot sales. The *Shreveport Times* was more likely to report to its readership on the doings in Bossier Parish, but the editions covering that period are missing from its files. The *Banner's* next edition of October 11th did, however, have this to pass along from the *Times*: "Benton correspondent of *Shreveport Times*. 'Benton is improving. Two nice buildings are being erected near the depot. One is a two story hotel and the other a store. The former owned by F. M. Hanks and the latter by W. B. Simpson.'" Prospective buyers were apparently not as optimistic about the future of old Benton as was Mr. Fleming. Any lot sales would have been reflected in courthouse conveyance records. No lots had been sold from the Benton survey. When Mr. Fleming died, his property was inherited by his heirs, who sold all but the 11-acre Fleming residence lot. The remaining 109 acres of the tract were sold to the "new" Benton Jewish merchant, Sam Willer, in 1907.

Lee Carrier disposed of his last interest in old Benton with the sale of Lots 10 & 11 to Lizzie Bolen in December 1888. He had much earlier acquired an interest in a half section of land that would be traversed by the railroad and become adjacent to the northern town limits of new Benton. The old town's demise was inevitable. Over a period of time the commercial lots lost their identities. Some residence lots maintained their utility as such and others melted into the store tract acreage, which would be sold and resold. The northernmost part of the tract now contains the Annie Lou Heights subdivision. The old town site location is still identifiable as the junction of the south end of the subdivision's "Robert Lane," and what had been "Old Bellevue Road," but now is a leg of Robert Lane. The north-south Robert Lane follows the route of the old

Shreveport and Arkansas Road, and the other was the old Bellevue and Red River Road. At this crossroads stood the old "Sentell's Store" of an earlier day. The current (2005) Robert Lane house site of Martha Ree Jones on the southern edge of the subdivision is located on Carrier's old Lots 10 & 11. After being resold many times, Lots 10 & 11 and Woodruff's Lot 12 were purchased by Martha's father, Jesse Jones, from J. W. Hosier in 1936. In 1968, the Benton city limits were extended south and west, taking in half of the old Benton town site (See Town of Benton map).

Lee Carrier died in 1900. Benton's Carrier Avenue was named for him, evidently in the initial naming of the streets before his death. (The old Carrier Grocery at the corner of Carrier and 5th Street (Old Plain Dealing Road) took its identity from Aaron L. Carrier. The store was already there when Aaron bought the property, which included the store with its "chattel," in 1967. Despite this coincidence, according to Aaron's daughter there is no known connection between the two Carriers.) The *Bossier Banner* of August 30, 1900, marked Lee Carrier's passing: "Mr. Lee Carrier, a citizen of Benton for about 35 years, died the 25th instant. His remains were buried in Coates graveyard Sunday."

The property to become the new Benton, and surrounding acreage, was bought up, mainly in 1888, by a group of investors calling themselves the "Benton Land and Improvement Company." The 240-acre town survey encompassed the E ½ of the NW ¼ and the NE ¼ of the SE ¼ of Section 30, and the W ½ of the NW ¼ and the NW ¼ of the SW ¼ of Section 29. The Cotton Belt track ran through the property, and the depot was roughly centered on the town site. The four primary developers, and partnership owners of the 120-acre Section 30 tract, were Samuel Zeigler, William Simpson, Horace Sibley and Francis Hanks. The Section 29 half of the town was owned in six equal shares by R. E. Wyche, Jr., William T. Timberlake, R. J. T. Herron, William B. Simpson, Samuel J. Zeigler and John A. Sewell, all prominent area citizens. Mr. Sewell had sold five-sixths of this 120-acre town site parcel to the other five and retained his own one-sixth share.

William Butler Simpson, Jr., was born to William Butler and Mary Coates Simpson at Coates Bluff, Shreveport, in 1854. Orphaned at age ten, he spent a good part of his youth with his widowed aunt, Matilda Coates Doles (later remarried to William J. Carter) on her plantation near Benton. He became a Bossier Parish deputy sheriff while still in his late teens. William was emancipated just short of his 21st birthday assisted by John A. Sewell, who was appointed as his special tutor for that purpose. This allowed him to take charge of his considerable inherited property. Simpson built the first store and the first house in new Benton, and was elected its first mayor. He also had timber, saw mill and farming interests.

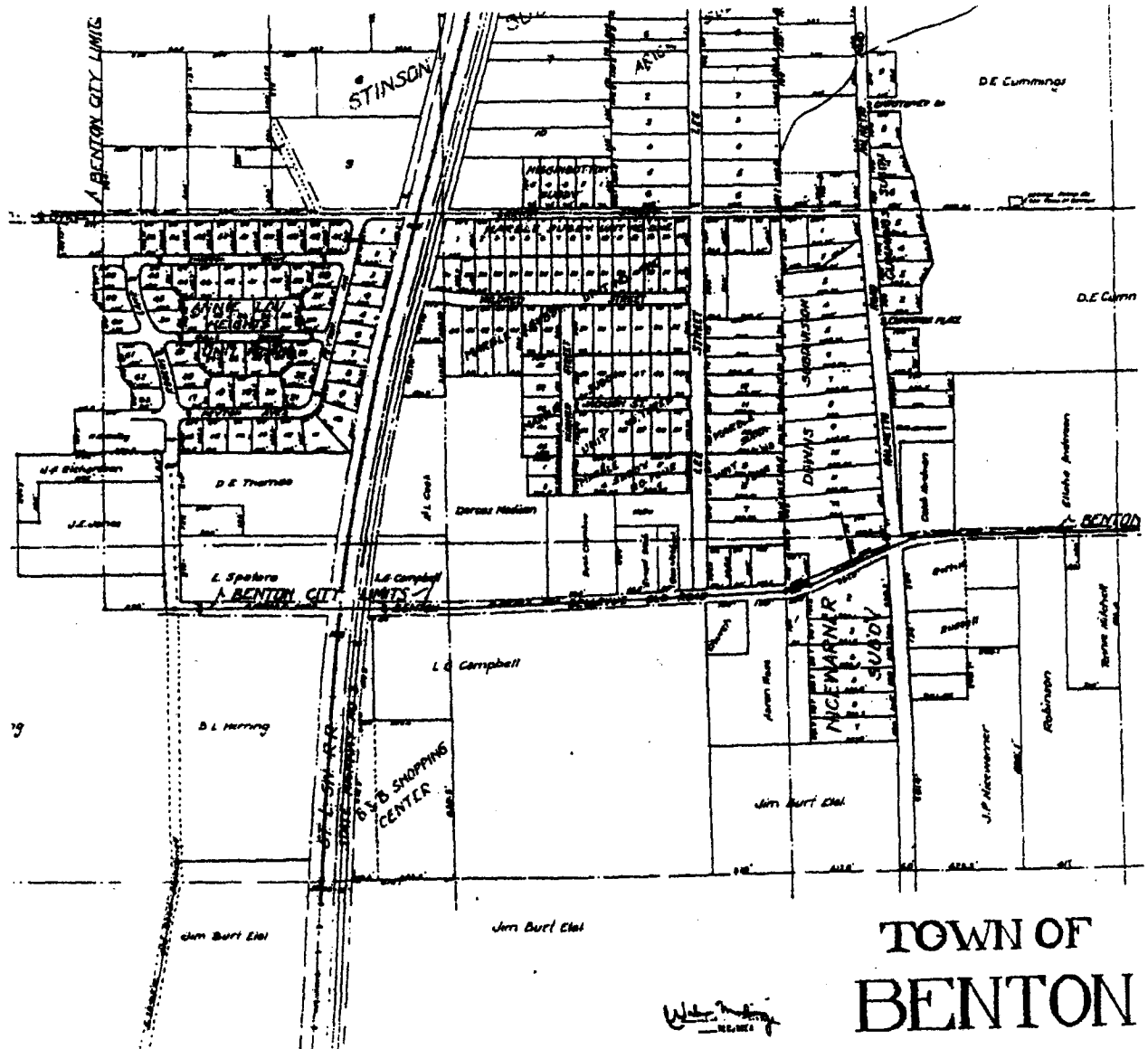
Horace Newton Sibley was a member of several of the region's oldest families, to include Sibley, Edwards and Irwin. He is said in the book, *History of Shreveport and Shreveport Builders, Vol 2*, to have been an inventor. Francis M. Hanks was a saw mill owner at the post office location of "Hank's Mill" east of Benton. The three were connected through marriage. Sibley and Simpson had married Vaughan sisters, Mary and Gussie, respectively. Hanks was married to Sibley's sister, Mary. The "Benton

Land and Improvement Company" cannot be found recorded in the Clerk of Court's "Miscellaneous Book," as would be expected. The town lots were all sold in the names of the individual members (for Hanks, the seller was "Mrs. M. H. Hanks, wife of F. M. Hanks, aided, authorized and assisted by her husband").

The Benton developers advertised their April 18, 1889, auction of town lots in the *Bossier Banner*. It was announced that the lots would be sold for one-quarter cash, and that railway excursion tours would run both ways at half rates. Free barbecue with entertainment by a brass band was promised for those attending. On April 25th the *Shreveport Times*, in reporting on the lot sales, enlightened its readers that "New Benton" already boasted a hotel, livery stable, one store, three neat dwellings, a depot and a two-story railroad section house. It is said that Frank Smith had the livery stable, just west of the railroad crossing. This is no doubt correct even though he is not the recorded owner of such property. He is known to have had a "stable" in old Benton. The *Times* correspondent reported that investment in the lots was somewhat speculative, being dependent upon Benton acquiring the courthouse. For the first hour and a half the bidding was timid and lots were sold at prices said to be very low. Mr. Zeigler then invited the crowd to follow the Shreveport band in a procession to a shaded picnic area, where they enjoyed a sumptuous meal of barbecue, sweetmeats, cakes and delicacies. The sale of lots was then resumed at a lively rate until the last lot was sold at 5:30. The 397 lots brought the sum of \$5,736, with most of the developers buying lots for themselves. The "new railroad town" of Benton got its courthouse the following year, and the rest is history – a narrative history that needs yet to be written.

Anyone who can provide additional information or corrections relative to this narrative of "old" Benton, please contact Dale Jennings, 194 Vance Road, Benton, LA 71006-9585 or e-mail at shalada57@bellsouth.net.





The 1968 Benton map shows that the town's southwest corner takes in part of "Old Benton." Note the junction formed by "Benton Bellevue Old Road" (Benton's southern city limits) and "Robert Lane," running through "Annie Lou Heights" subdivision. The latter follows the old Shreveport and Arkansas Road, later State Road No. 38; its south extension here faintly marked, "S. 38 MR Old Road Abandoned." Benton's western city limits runs through several old Benton town lots, to include the Jones' old lots 10, 11 and 12.

Marrying Off Your Daughter In The 17th, 18th or 19th Centuries

Submitted by *Heather McEntee*, Genealogy Librarian
Broadmoor Branch of Shreve Memorial Library

Consider these Questions before your daughter marry:

1. Would you rather your daughter marry a:
A) rounder; B) nabob; C) Geek; D) Dragoon
2. Would you rather she have a:
A) frank marriage; B) knobstick marriage; C) tally-husband
3. Which would be a desirable wedding gift?
A) a set of winding sheets; B) a land grave; C) a tack of diapers
4. Where will the wedding supper be?
A) a spittle; B) ordinary; C) saloon
5. How could each of these businesses or occupations help with the wedding festivities?
A) backster; B) piper; C) spinster; D) chamber master;
E) bucket shop
6. If you overspend on the wedding, you may have to:
A) take part in a filibuster; B) resort to an outcry;
C) leave on a scoop.

Their Meanings:

1. A) Methodist circuit rider; B) rich man; C) carnival performer who specialized in biting the heads off chickens; D) heavily-armed mounted cavalryman
2. A) arranged marriage; B) shotgun wedding; C) live-in boyfriend
3. A) sheets wrapped around a corpse; B) 48,000 acres in South Carolina; C) napkins
4. A) hospital; B) a public house where meals were served; C) restaurant (with or without liquor)
5. A) baker; B) innkeeper; C) spin wool for clothing; D) shoemaker with a home-based business; E) a business selling liquor from a large container which was poured into buckets customers brought from home
6. A) an unauthorized military expedition to promote rebellions in Latin America; B) an auction; C) a Conestoga wagon

The following "quiz" was taken from the Angelina County Genealogical Society newsletter who got it from Kissin Kuzzins, May 23, 2004

FALTINE CEMETERY, EAST HIGHWAY 5, GLOSTER, DESOTO PARISH, LA

By Isabelle Woods

THE GENIE FOURTH QUARTER 2005

173

	SURNAME	FIRST	MIDDLE	TITLE	BIRTH	DEATH	INSCRIPTION/REMARKS
202	Adams	Marion			1873	1952	
203	Adams	Lewis			15 Mar 1914	17 Jan 1986	
204	Adams	Mary			1881	1961	
215	Adams	Lula			14 Jul 1895	31 Mar 1909	
206	Adkins	Gentry	Jr.	Rev.	09 Oct 1911	09 Jan 1978	
240	Adkins	Gentry		Rev.	04 Jun 1886	13 Jan 1970	Double with Lubirder Adkins
239	Adkins	Lubirder			11 Dec 1888	11 Sep 1959	Double with Rev. Gentry Adkins
186	Atkins	Thelma	Green		16 Dec 1925	25 Apr 1997	
201	Atkins	Diana	Sue		21 Feb 1954	06 Apr 1969	
216	Atkins	Wisie			12 Oct 1909	03 Aug 1954	
207	Atkins	John	L.		21 Jun 1906	07 Mar 1998	PFC U S ARMY
82	Barnes	Emma	T.		1863	15 Jul 1896	Mother
85	Barnes	L.	J.		11 Apr 1924	01 Jan 1974	Vault; Husband.
127	Belton	Royal	O'Neal		20 Feb 1943	23 Feb 1943	
251	Birril	Mattie			15 Oct 1897	20 Nov 1969	
273	Bloome	?			1872	01 Feb 1943	
238	Boyd	Doris			28 Sep 1923	23 Jul 1954	Age 31 yrs.; Chapter No. 20
281	Brown	Dan			14 Jun 1900	27 Mar 1984	
280	Brown	Malissie			09 Jan 1902	11 Dec 1973	
232	Carter	Lillie			05 Feb 1882	27 Jun 1959	
254	Clark	Ella	V.		1925	1995	Vault
120	Clark	Ella			1887	26 Aug 1900	Age 13 yrs.; Dau of Bragg & Alice Clark
118	Clark	Bragg				24 Oct 1917	New Light Chamber 2370, Keatchie, LA
64	Clark	Judge			06 Oct 1886	15 Oct 1966	
61	Clark	Bettie			15 May 1894	06 Jul 1926	Canaan Chamber 2401, Stonewall, LA
124	Clark	R.	T.		18 Jul 1915	20 Nov 1956	Headstone (HS) has a photo of decedent.
62	Clark	Hattie			10 Aug 1891	12 May 1923	
60	Clark	Walter			11 Oct 1888	08 Jul 1954	
65	Clark	Mose			1880	1947	Double with Mary Lee Clark
66	Clark	Mary	Lee		1889	1934	Double with Mose Clark
67	Clark	Shirley				29 Oct 1940?	Age 60 yrs; metal marker.
63	Clark	Willie	T.		18 May 1924	02 May 2003	Metal marker
122	Clark	Alice			1874	1943	Age 69 yrs.

FALTINE CEMETERY, EAST HIGHWAY 5, GLOSTER, DESOTO PARISH, LA

THE GENIE FOURTH QUARTER 2005

174

ID	SURNAME	FIRST	OTER	TITLE	BIRTH	DEATH	INSCRIPTION/REMARKS
121	Clark	Junie				14 Mar 1946	Age 54 yrs.; Husband of Gustann Clark.
68	Clark	A.	J.	Mr.		--- Feb ---	Illegible metal marker.
260	Clark	Don	John		1944	1993	
259	Clark	Cornell			1941	1979	Vault
3	Clark	Frankie			12 Mar 1909	18 Jun 1992	
179	Clay	Shakena	"Keke"		1987	2002	
18	Cole	Annie	Lee		1879	1918	Mother
230	Craig	Annie	Bell		15 Jan 1928	16 Aug 2003	Mother
289	Crosby	Edward			13 May 1953	21 Dec 1981	SGT U S AIR FORCE VIET NAM
45	Crosby	Ernest		Rev.	05 Jun 1880	07 Mar 1965	
46	Crosby	Priscilla				--- ----- 1910	Age 56 yrs.
48	Crosby	Jack				Died	Age 75 yrs.; No dates.
284	Crosby	Bessie	Lee		24 Feb 1924	10 Jun 1972	
294	Crosby	Mamie	H.		1899	1985	Metal marker
288	Crosby	Isiah			04 Jul 1893	23 Aug 1980	
287	Crosby	Charlie			23 Jul 1888	27 Mar 1983	
286	Crosby	Metter	Hall		1893	07 May 1968	
285	Crosby	Myrtle		Sister	26 Aug 1896	17 Apr 1998	
210	Crumley	Lucille			24 Nov 1916	10 Jun 1975	
266	David	James	Sherman		11 Jan 1941	16 Oct 2000	
308	Debose	Emerson			15 Aug 1912	11 Jun 1996	U S ARMY; Vault
297	Dewitt	?		Mrs.	14 Sep 1901	10 Feb 1986	Age 84 yrs.; metal marker.
244	Diddle	Lizzie			07 May 1880	07 Nov 1934	
246	Dillard	Jack			1912	1951	Husband of Lula Mae Dillard
183	Douglas	Eddie	Lee		15 Apr 1914	30 Jun 1986	
241	Douglas	Aaron	P.		11 Sep 1965	14 Feb 1994	
242	Douglas	Cora	Adams		26 Jan 1904	05 Nov 1986	"Mother of 13 children."
180	Douglas	Robert	E.		05 Nov 1955	27 Apr 1990	Metal marker.
184	Douglas	Lomot					No dates.
185	Douglas	Leolar			1903	1933	
310	Dubose	George					Dates on military headstone are buried too deeply.
217	Elder	Jennie	V.		--- Oct 1904	11 Sep 1957	
15	Elise	Leroy			03 Nov 1904	06 Feb 1931	Age 27 yrs.

FALTINE CEMETERY, EAST HIGHWAY 5, GLOSTER, DESOTO PARISH, LA

THE GENIE FOURTH QUARTER 2005

175

	SURNAME	FIRST	OTHER	TITLE	BIRTH	DEATH	INSCRIPTION/REMARKS
125	Ellis	Ida	P.		09 Oct 1908	14 Mar 1984	
279	Faulkner	Mattie	B.		1908	1974	Vault
101	Ford	Annie			06 Jun 1910	11 Jan 1945	
58	Franks	Robert			1941	2003	Vault
59	Franks	Venada	C.		1918	1998	Vault
56	Franks	William			25 Jul 1916	25 May 1957	Age 42 yrs.
57	Franks	Irene	Hill	Mrs.	26 Sep 1928	13 Dec 2003	Age 75 yrs.; metal marker.
223	Fuller	Early			23 Dec 1908	25 Mar 1949	Age 47 yrs.; Headstone broken in half.
301	Fuller	J.	B.		04 Mar 1936	26 Jun 1985	Metal marker has DOB March 2, 1936 and DOD June 25, 1985.
49	Gant	William			07 Jun 1900	12 Feb 1985	
283	Garner	Jessie	Lee		04 Jul 1919	02 May 1981	
268	Garner	Ruthie			30 May 1932	24 Aug 2004	
236	Garner	Charity			07 May 1885	22 Sep 1980	
39	Gaston	Harriett				1905	Age 65 yrs.
255	Godfrey	Carrie	Clark		27 Mar 1954	29 Nov 1988	
77	Graham	Amellia			20 Apr 1906	24 Jan 1992	Age 85 yrs.; metal marker
267	Green	Leon		Jr.	03 Feb 1936	24 Sep 1999	
264	Green	Leon		Sr.	15 Feb 1905	31 Dec 1969	
229	Green	Foster		Sr.	23 Feb 1910	31 Dec 1987	
227	Green	Cleveland			1885	1982	PFC U S ARMY
226	Green	Hattie			28 Jul 1896	13 Jan 1988	
225	Green	Fred		Jr.	1892	1980	PVT U S ARMY WORLD WAR I
224	Griffey	Charles				12 May 1911	
299	Griffin	Henry			09 Sep 1922	06 Jan 1974	LOUISIANA PT ARMY AIR FORCES WORLD WAR II
126	Guice	Mandy		Sister	09 Mar 1910	21 Feb 2003	
177	Hairell	Morine			1905	2001	Wife of Emmett
293	Hall	Ella	Mae	Ms.	04 May 1949	19 Nov 1987	Metal marker
292	Hall	James			1913	2001	
5	Hall	Willie			1897	Blank	Double with Ruth Hall (Sug)
38	Hall	Oscar	David		1944	1998	Vault
12	Hall	Edith			19 Jun 1865	14 Jun 1929	Mother
6	Hall	Ruth	(Sug)		1894	1962	Double with Willie Hall
13	Hall	Gillie				--- Jul 1933	Age 72 yrs.

FALTINE CEMETERY, EAST HIGHWAY 5, GLOSTER, DESOTO PARISH, LA

THE GENIE FOURTH QUARTER 2005

176

ID	SURNAME	FIRST	OTHER	TITLE	BIRTH	DEATH	INSCRIPTION/REMARKS
74	Hampton	Ellen			18 Aug 1866	31 Jan 1884?	Dau of W & L Hampton
30	Hampton	Wade				12 Jun 1905	Age 68 yrs.
73	Hampton	Thomas					Death date illegible; Age 8 yrs.; son of W & L Hampton
29	Hampton	Lucy			1833	15 Oct 1903	Wife of Wade Hampton
176	Hannon	Curtis			03 Aug 1968	22 Nov 1999	
145	Hardy	Lance			25 nov 1928	23 Jun 1997	PVT U S ARMY
106	Harries	Jeff			20 Oct 1853	22 Dec 1918	Age 65 yrs.
107	Harries	Laura			03 Jan 1859	18 Mar 1919	Age 60 yrs.
104	Harris	Edward			25 Dec 1919	08 Jan 1967	
102	Harris	Jessie			22 Apr 1889	01 Jan 1955	
100	Harris	William		Bro.	03 Oct 1877	23 Jul 1964	
133	Harris	Fannie				12 Nov 1952	Age 80 yrs.
304	Henderson	John	T.		15 Sep 1916	18 Dec 1983	
147	Henderson	Carrie	V.		16 May 1914	29 Dec 1998	
108	Henderson	Mamie	Lee		11 Feb 1943	02 Sep 1963	
17	Henson	Dianna				03 Jul 1912	Wife of Prince Henson
99	Hightower	Robert			04 May 1919	02 Mar 1940	
306	Hightower	Rufus			11 Jul 1917	10 May 1993	
214	Holmes	May			1840	11 Jan 1912	
149	Horton	Roosevelt			07 Jul 1910	05 Dec 1996	CPL U S ARMY WORLD WAR I. Dates too deeply buried.
150	Horton	Anthony		Jr.			
158	Horton	Marshall					"U S ARMY" rest of inscription is too deeply buried. Vault.
197	Horton	Elsie			1905	1981	Vault
196	Horton	Albert			1905	1991	Vault
170	Horton	Sam			15 Aug 1889	26 Mar 1961	
155	Horton	Joe			28 Jul 1893	19 May 1978	
171	Howard	Joan				19--0	Date Illegible.
169	Howard	Bernice	Whorton		25 Dec 1912	28 Oct 1957	
168	Howard	Loraine	H.		01 Nov 1927	22 Nov 1965	
24	Howard	Jane	Shermon		1846	25 Sep 1954	Age 106 yrs.
132	Howard	Stepny				15 May 1885	Age 75 yrs.
131	Howard	Mary	Ann			1912	Age 90 yrs.
53	Howard	Luria			15 Oct 1885	04 Jan 1956	Mother

FALTINE CEMETERY, EAST HIGHWAY 5, GLOSTER, DESOTO PARISH, LA

THE GENIE FOURTH QUARTER 2005

177

	SURNAME	FIRST	OTHER	TITLE	BIRTH	DEATH	INSCRIPTION/REMARKS
52	Howard	Grace			07 Jan 1896	08 Jan 1967	Wife
90	Humphery	Cal			1885	1940	Age 55 yrs.
1	Jacobs	Robert	Thomas		08 Apr 1877	29 Apr 1962	Vault
2	Jacobs	Ruby	Jackson		28 Mar 1884	01 July 1973	Vault
305	Jacobs	Inez		Sis.	03 Oct 1902	18 Jan 1972	
303	Jacobs	Leo			27 Jul 1932	13 Sep 2004	Age 72 yrs.
128	James	Betty	Lean		22 Jan 1937	28 Jun 1938	
88	James	Sumatha	Prince		19 May 1917	21 Oct 2004	
144	Johnson	Deckmon		Jr.	19 Feb 1952	04 Jul 1996	
83	Johnson	Priscilla	B.		10 Jan 1882	22 Jun 1971	Mother; Headstone has a photo of decedent.
258	Jones	Emma	Lee	Sis.	12 Dec 1916	02 Dec 1980	
199	Jones	Youree	Dean		13 Jan 1928	28 Jul 1996	"Mama"; name from metal marker; HS reads "Youree D. Jones."
130	King	Francis				--- Feb 1903	Wife of Alfred King
311	King	Jessie?		Mrs.	01 Apr 19---	04 Nov 1983	Metal marker
205	Kyle	Essie	N.		1918	1949	
298	Lane	Ben			1936	1987	Inscription is written on a large wooden cross.
296	Lane	Hattie	Mae		15 Jun 1926	04 Feb 1986	
300	Latin	Lillie	B.		22 Mar 1925	25 May 1989	
277	Lee	Jessie			1915	1977	PFC U S ARMY
36	Lee	Frankie			30 Apr 1911	03 Apr 1915	Dau of Will & Donie Lee
302	Lee	Abbie			22 Jul 1934	08 Aug 1967	
261	Lewis	Annie	Bell		01 Jul 1926	22 Aug 1979	
237	Lias	Henry				06 Aug 1952	Age 85 yrs.
7	Lindsey	James		Rev.	01 Jan 1871	09 Dec 1964	
119	Littleton	Malissie			10 May 1884	--- Sep 1901	Wife of John Littleton
136	Littleton	John			1870	06 Dec 1951	Age 81 yrs.
14	Littleton	Ankie			07 Dec 1887	11 Aug 1928	Canaan Chamber 2401, Gloster, LA
282	Littleton	Nannie	P.		11 Apr 1876	21 Jul 1965	
256	Lowe	Essie	B.		19 Oct 1934	06 Jun 1995	Mother and Grandmother
252	Lowe	Lonnie		Jr.	15 Jun 1935	19 Jul 1986	
70	Martin	Bettie			25 Oct 1875	16 Nov 1939	
71	Martin	Florence				15 Apr 1912	Age 14 yrs.
114	Martin	Donnie				27 Mar 1940	Age 65 yrs.

FALTINE CEMETERY, EAST HIGHWAY 5, GLOSTER, DESOTO PARISH, LA

THE GENIE FOURTH QUARTER 2005

178

ID	SURNAME	FIRST	OTHER	TITLE	BIRTH	DEATH	INSCRIPTION/REMARKS
116	Martin	Pearline			24 Nov 1913	19 Apr 1963	Exceesior No. 2 E. S. O.; married in 1934; mother of 10 children.
115	Martin	Willie	L.		09 Dec 1906	24 Oct 1947	
37	Martin	Annis				30 Dec 1927	Age 76 yrs.
243	Mathis	Alice	C.		1912	1964	
32	McCall	Victoria			21 Jan 1855	20 Feb 1928	Canaan Chamber 2401, Gloster, LA
35	McCall	Lillian			16 Apr 1908	--- Mar 1915	Dau of Jesse & Claudie McCall
173	McCall	James			12 May 1889	03 Jan 1969	LOUISIANA PVT 11 CO 164 DEPOT BRIG WORLD WAR I
26	McClain	M.	C.		21 Jun 1920	04 Jul 1992	Age 72 yrs; MM.
91	McClain	Emmer				07 Feb 1907	Age 31 yrs.; Wife of Andrew McClain
194	McClure	Bazzie	Lee	Mrs.	15 Jan 1919	07 Dec 1982	Vault
78	McKnight	George	"Benji"		18 Oct 1964	15 Aug 1978	
222	Mitchell	Hattie				11 Mar 1941	Mother
143	Morgan	Jessie			18 Apr 1870	19 Dec 1953	Age 83 yrs.
138	Morgan	Travis		Rev.	1864	1925	Age 81 yrs.; Father of Ed & J. T. Morgan;
139	Morgan	Essie	Lee		28 Mar 1899	24 Aug 1900	Dau of J. D. Morgan; double with Corine Morgan
140	Morgan	Corine			24 Aug 1894	15 Aug 1899	Dau of J. D. Morgan; double with Essie Lee Morgan
142	Morgan	Delia			11 Oct 1875	31 Dec 1940	Age 65 yrs.
112	Morgon	Claudia			14 Aug 1881	27 Aug 1961	
198	Morris	Burnett	W.		25 Dec 1912	30 Dec 1998	Metal marker
113	Morrison	Martha			19 Jun 1865	13 Oct 1948	
33	Mosley	Annie	Lee		25 Dec 1916	15 Mar 19--	Vault
34	Mosley	Bertha			11 May 1915		Headstone specifically says "BORN" with date; Vault
93	Mosley	Clayton			1915	1975	PVT U S ARMY
94	Mosley	Frances			04 Apr 1882	13 Dec 1963	Mother
95	Mosley	Charlie		Dea.	04 Sep 1881	13 Dec 1964	"AT 11:00 P.M."
98	Mosley	A.	C.		17 Jul 1907	17 Dec 1940	
96	Mosley	Mattie	Pearl		18 Apr 1923	06 Aug 1989	On vault "1921 - 1989"; exact dates from headstone.
97	Mosley	Y.	V.		1903	1994	Vault
21	Okee	Carrie	H.		01 Jun 1900	09 Sep 1978	Dau of Jim and Mittie Hill Henderson.
23	Okee	Joe			30 Mar 1928	19 Jul 1984	Age 56 yrs; MM.
51	Okee	Weyman			23 Jun 1908	11 Jan 1987	
20	Okee	Wyatt			01 Jan 1905	Blank	Son of Howard annd Laura Easie Okee
4	O'Kee	Ophelia	Clark		04 Sep 1912	06 Mar 1988	

FALTINE CEMETERY, EAST HIGHWAY 5, GLOSTER, DESOTO PARISH, LA

THE GENIE FOURTH QUARTER 2005

179

ID	SURNAME	FIRST	MIDDLE	TITLE	BIRTH	DEATH	INSCRIPTION/REMARKS
193	Pennington	Bennie	Mae		1927	1990	Vault
192	Pennington	Will		Jr.	1926	1993	Vault
141	Phelps	Gillie			1856	08 May 1941	
137	Phels	Martin			01 Mar 1856	05 Mar 1933	
208	Phillips	Jessie	M.		1912	1987	
209	Phillips	Henry	B.		1908	198--	Death date illegible.
69	Pipkin	Robert			18 Dec 1889	12 Apr 1977	PFC ARMY WORLD WAR I
43	Pipkins	Wilburet			22 Oct 1881	22 Jan 1954	Age 73 yrs.
165	Pipkins	Mary	Virginia		1921	1997	Vault
16	Pipkins	Lemar			27 Sep 1886	21 Jul 1942	
307	Pipkins	Leona			06 Apr 1900	10 Nov 1997	
40	Pipkins	Blanchard		Bro.	02 Mar 1915	30 May 1985	
44	Pipkins	Donald	R.		31 Oct 1949	16 Jun 1968	
109	Pouncy	Effie			25 Nov 1884	02 Aug 1942	Age 58 yrs.
22	Pouncy	Mandy		Mrs.	20 Jan 1908	25 Aug 1978	Age 78 yrs 7 mos 5 days; Metal marker.
19	Pouncy	Pearl	H.		19 Jun 1910	30 Jul 1972	Mother. Vault.
129	Prince	W.	H.		19 Nov 1944	09 May 1944	Child of Mr. & Mrs. Prince
80	Prince	Earnest		Jr.	23 Jun 1919	14 Dec 1973	
86	Prince	Edward			01 Mar 1904	18 Jan 1987	Father
81	Prince	Sallie	B.		12 Apr 1882	14 Jan 1959	Mother
117	Prince	Carl	E.		30 Oct 1932	19 Feb 1981	
76	Prince	Charlie			22 Mar 1913	09 Dec 1994	Husband/Daddy; vault
42	Ransburg	Ella	D.		1919	1967	Vault
47	Raodd	Betsy				1900	Age 114 yrs.; may be misspelled for "Roadd" or "Rhodes."
55	Rhodes	Virginia				12 Jul 1951	Age 67 yrs.
175	Rhodes	Mary				1941	Age 42 yrs.
174	Rhodes	Addie				27 Jan 1940	Age 78 yrs.; Mother.
233	Richardson	Willie	D.		08 Oct 1930	12 Oct 1957	LOUISIANA PVT BTRY A 253 ARMD FLD ARTY
276	Roberts	Mattie			20 Oct 1898	27 Aug 1962	Age 63 yrs.; Mother
213	Robinson	Claudell	Lee		03 Mar 1901	04 Mar 1974	LOUISIANA PVT U S ARMY WORLD WAR II
54	Robinson	Lula			1887	18 Aug 1957	Mother
269	Robinson	Annie			25 Dec 1900	10 Sep 1944	Wife and Mother; Age 43 yrs.
28	Samuels	Cato				24 Jul ----	Age 78 yrs; Double with Liza Samuels; HS broken at yr of death.

FALTINE CEMETERY, EAST HIGHWAY 5, GLOSTER, DESOTO PARISH, LA

THE GENIE FOURTH QUARTER 2005

180

ID	SURNAME	FIRST	OTHER	TITLE	BIRTH	DEATH	INSCRIPTION/REMARKS
27	Samuels	Liza				16 Dec ----	Age 47 yrs; Double with Cato Samuels; HS broken at yr of death
75	Sanders	Rufus P.	"Big Boy"		16 Apr 1938	24 Mar 1993	Daddy
79	Sanders	Charlie	Allen		13 Apr 1936	05 Oct 1977	
172	Sanders	Willie					No dates.
218	Scoggins	Louise			04 Mar 1926	18 Jan 1956	Has photo on headstone.
253	Scroggins	Bobbie	Jean		19 Apr 1940	26 mar 2004	Wife and Mother
182	Scroggins	Georgia	"Moma"		28 Jul 1888	20 Jan 1989	
9	Shepard	David	L.		05 Apr 1924	18 Feb 1996	U. S. ARMY
31	Simon	Aquillo				25 Apr 1975	Vault
25	Simon	Mary	Lee	Mrs.		08 Mar 1987	Age 80 yrs; Metal marker.
181	Simpson	Alma	Joyce		16 Apr 1947	22 Jul 1989	Wife and Mother.
200	Sims	Ashton			08 Mar 1890	18 Sep 1915	LOUISIANA PVT 325 SERV BN QMC
110	Sloan	Johnnie	May				No dates
272	Sloan	Ada	W.		14 Mar 1911	20 May 1978	
265	Sloan	Arthur			02 Jul 1926	30 Oct 1980	
295	Sloan	Wade			06 Jun 1923	23 Apr 1986	
271	Sloan	Preacher			09 Apr 1899	13 Jul 1972	
274	Smith	Little			30 Apr 1905	12 Jun 1940	Age 35 yrs.; Mother.
248	Smith	Mary	W.		06 Oct 1902	30 Jul 1968	
159	Smith	Charlie	L.		10 Mar 1897	13 Jan 1980	PVT U S ARMY WORLD WAR I. Vault.
111	Smith	Alice			30 May 1818	03 Mar 1968	
247	Smith	Peggy	"Dinah"		30 Jul 1931	09 Jan 1994	Age 39 yrs.; Mother.
249	Smith	Willie			06 Mar 1907	21 Jul 1977	
195	Smith	Carlet			17 Feb 1892	15 Nov 1968	Vault
275	Sterns	Abbie	Lee		22 Jul 1934	08 Aug 1967	Mother
10	Survine	Frank			11 Aug 1924	03 Jan 1995	U. S. ARMY
135	Taylor	Gillie		Ms.	19 Nov 1913	28 Jul 1999	Age 86 yrs.; metal marker.
235	Taylor	Ella	C.		28 Feb 1892	11 May 1961	
231	Thomas	Toney			07 May 1905	19 Mar 1962	
105	Thomas	Sallie				19 Apr 1933	Age 53 yrs.; Mother.
146	Thomas	Andrew					Dates too deeply buried to obtain.
50	Turner	Mattie	Bell		26 Dec 1934	22 Apr 1994	Metal marker: "Mattie Bell Turner Smith"
278	Vance	Monroe			1900	1983	

FALTINE CEMETERY, EAST HIGHWAY 5, GLOSTER, DESOTO PARISH, LA

THE GENIE FOURTH QUARTER 2005

181

	SURNAM	FIRST	MIDDLE	DATE OF BIRTH	DATE OF DEATH	INSCRIPTION/REMARKS
160	Vosley	I	T	04 Feb 1914	09 Mar 1965	LOUISIANA PVT 3508 BASE UNIT AF WORLD WAR I.
250	Waites	Phil		03 Apr 1907	23 Aug 1964	
270	Waites	Eil	Bro.	24 Aug 1902	26 Oct 1973	
191	Walker	Odessa		02 Jun 1921	07 Feb 2003	Metal marker
257	Walker	Shirley	Ann	1938	2004	Has a pink-colored vault
309	Washington	Gerard	Master	06 Apr 2001	06 Apr 2001	
134	Washington	Zerline		04 Aug 1900	10 Feb 1925	
8	Washington	Hattie		11 May 1893	20 Feb 1947	Mother
221	Washington	Aline		1908	1935	Mother
89	Washington	Sarrie		1860	16 Aug 1926	
87	Washington	Obie		05 Dec 1937	16 Jan 1964	LOUISIANA CPL B 1 BN 4 MARINES
263	Wates	Sallie	B. Sister	04 Mar 1916	30 Sep 2000	
187	Wharton	Evans		16 Apr 1916	04 Feb 1983	PFC U S ARMY WORLD WAR II
219	White	Verse	W.	1937	1994	
234	White	Alex				"LOUISIANA....." Military inscription buried too deeply.
220	White	Mary	Anna	1916	2000	
11	Whorton	Daisy		1880	21 Sep 1921	Star in the Valley Chamber 3801, Gloster, LA
163	Whorton	Willie	Mae	04 Apr 1908	05 Apr 1946	Age 67 yrs.
190	Whorton	Gladys		1912	2002	Vault
189	Whorton	Wade		1909	1996	Vault
188	Whorton	Emmer	Lee	30 Jul 1900	14 Dec 1977	
167	Whorton	Earnest		01 Jan 1891	07 Oct 1953	
156	Whorton	Marshal		19 Feb 1864	15 Feb 1898	
164	Whorton	Willie		31 Oct 1911	10 Apr 1947	
162	Whorton	Maple		02 Apr 1935	03 May 1945	Age 10 yrs.
161	Whorton	Marsha ?		12 Dec 1912	11 Feb 1941	
157	Whorton	Anthony		25 Dec 1867	04 Dec 1937	
153	Whorton	Wade		28 May 1940	11 Oct 1940	
152	Whorton	William		26 Aug 1879	16 Nov 1935	Vault
151	Whorton	Mariah			16 Aug 1907	Age 57 yrs.
148	Whorton	Willie		1918	1990	PVT U S ARMY WORLD WAR I
154	Whorton	Rachael	W.	1871	1955	
166	Whorton	Nathaniel		13 Nov 1917	02 Jun 1942	Age 25 yrs.

FALTINE CEMETERY, EAST HIGHWAY 5, GLOSTER, DESOTO PARISH, LA

THE GENIE FOURTH QUARTER 2005

ID	SURNAME	FIRST	OTHER	TITLE	BIRTH	DEATH	INSCRIPTION/REMARKS
92	Williams	Malissie				22 Oct 1926	Metal marker
291	Williams	Persilla	C.		1913	1967	Mother
290	Williams	Ben	Henry		1896	1969	Father
245	Williams	Hillard	B.		16 May 1901	13 Jun 1971	LOUISIANA PVT U S ARMY WORLD WAR II
228	Williams	Mattie	G.		1908	1996	Vault
212	Williams	Dellar			1885	1929	
211	Williams	Walter	F.		1889	1976	
84	Williams	Clyde			1920	1987	Vault
178	Wilson	?			1907	?	Inscription on vault illegible.
41	Wilson	Para	Lee		19 Jun 1882	10 Oct 1952	Age 70 yrs.
72	Wilson	David			15 Oct 1875	23 May 1954	Age 78 yrs.
103	Yancy	Polly	H.		15 Apr 1890	15 May 1964	Vault
123	Yarbrough	Katie	C.		15 Jun 1891	06 Jul 1969	
262	Young	Helen	W.		08 Jul 1922	15 Sep 1972	

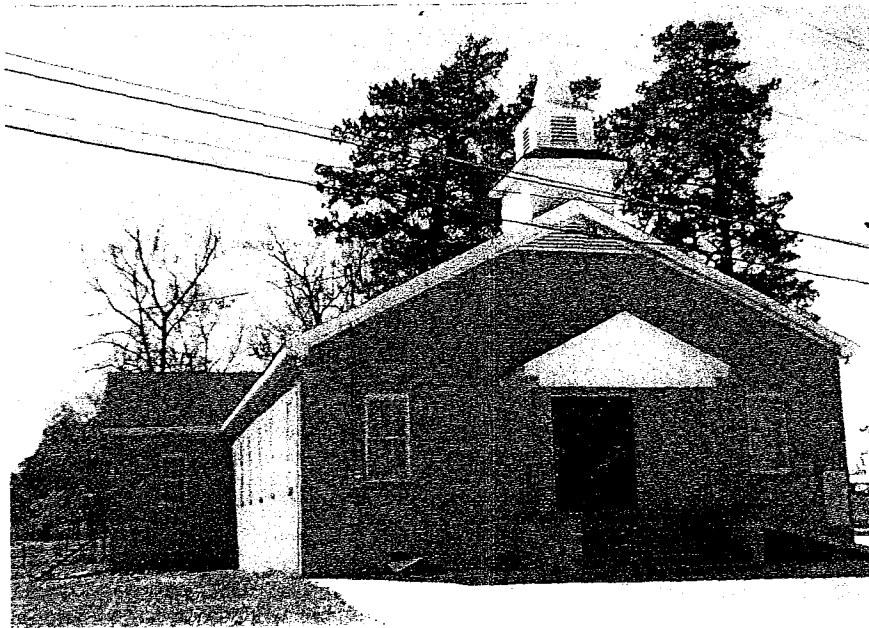
182

The Faltine Baptist Church Cemetery of Gloster, Louisiana, belongs to the congregation of the Faltine Baptist Church of Keatchie, DeSoto Parish, Louisiana. Although in the town of Gloster, this cemetery and its church are only about a mile apart. Rev. Kirk P. Bell is its current Pastor.

Based on its cornerstone laid on October 17, 1915, the Faltine Baptist Church was organized in September 1880 by Reverend T. Morgan. Deacons were H. Green, J. M. Hall, S. Lee, E. D. Rencher. In 1915, J. E. Evans, Pastor, W. M. Harris, Treasurer, and M. W. Horton, Clerk were officers.

The Faltine Baptist Church was rebuilt in 1954. Officials were Pastor, Rev. A. Tinker; Secretary C. V. Sloan; Deacons C. Mosley, B. Henderson, M. Vance, A. Whorton, G. W. Hall, E. D. Scroggins, E. Hall, and J. Littleton.

Directions: From Shreveport, LA, travel south on Highway 171. At the intersection of Highway 171 South and Highway 5, turn left to travel east on Highway 5 for seven-tenths of a mile. The Faltine Baptist Church Cemetery is on the left on East Highway 5.



FALTINE BAPTIST CHURCH
KEATCHIE, DESOTO PARISH, LA

KIRK P. BELL, PASTOR

ORGANIZED SEPTEMBER 1880
REBUILT IN 1954

Book Review

By Lynda Methvin

Title: *Obituaries from Southern Standard and New Era Newspapers from Central Tennessee (1867 – 1934) by Maxine Reggio*

This book is a goldmine of information, genealogical and historical. At the beginning there is a page titled Diseases. There is a listing of illnesses found in old medical records, old death certificates and old family Bibles. It gives the name as it was called then and the name or description as we know it now.

There are 161 pages of obituaries found in two newspapers published in Warren County, Tennessee. However, family ties noted here not only expand outside the county, but all over Tennessee and beyond to other states from coast to coast.

Numerous young children and babies are documented here whose names never appeared on censuses. The index is a full name listing of the deceased. Unfortunately, all the many, many names found in the obituaries are not included in the index.

The following book was donated by Herman Weiland and is not in the Broadmoor Library, Genealogy Section.

QUERIES

by Isabelle Woods

BABB Seek information about Jasper NEWTON TALBOT b 29 Feb 1856 at Grafton,
NEWTON Taylor County, Virginia; d 14 Sep 1937, Shreveport, Caddo Parish, Louisiana.
TALBOT Jasper may have been buried in Ottawa, Canada, or Miami, Florida, or in
Oklahoma. Who is his wife? Did this union produce any children? Contact Will
BABB of Talala, OK, via e-mail: willjag@ionet.net.

Thomas Jefferson Martin

Submitted by Constance "Margie" Whatley

This brief genealogical biography of my *maternal* great grandfather Thomas Jefferson Martin of Bienville Parish, Louisiana is an attempt to add some personality to his past as well as some facts and dates.

Thomas Martin was born May 16, 1844 near Ringgold, Louisiana, Ward 4, in what is not Bienville Parish. He was married to Laura Frances Bryan on November 24, 1867. Laura Bryan Martin was born November 22, 1846 in Louisiana.

The children of Thomas Jefferson Martin and Laura Frances Bryan:

- 1) John Joseph Martin, born May 14, 1869 and died 1942
- 2) Thomas Redick Martin, born January 2, 1871 and died October 18, 1872
- 3) Jesse Pittman Martin, born November 7, 1872 and died April 4, 1961
- 4) James Bryan Martin, born October 31, 1875 and died April 4, 1961
- 5) Thomas Jefferson Martin, Jr., born December 6, 1877 and died May 8, 1952
- 6) William Walter Martin, born May 20, 1880 and died September 2, 1882
- 7) Charles Arthur Martin, born August 4, 1884 and died June 15, 1912
- 8) Mary Marguerite Martin, born January 29, 1887 and died November 17, 1970

He enlisted in the Confederate Army March 1, 1862 at Coushatta Chute, LA. He served as a private in Company A, 12th Louisiana Infantry. He was captured and paroled at Vicksburg, Mississippi on July 4, 1863. Thomas Martin was later wounded at Bentonville, North Carolina on March 19, 1865 and was in Pettigrew General Hospital No. 13. In April of 1865, T. J. Martin was transferred to CSA General Hospital No. 3.

Thomas Jefferson Martin filed a Confederate Pension application on May 21, 1924 and the pension was granted on June 19, 1914. Laura Bryan Martin filed a widow's pension application on May 9, 1928 and the pension was granted June 12, 1928.

He was a circuit riding Methodist Minister and established the Grand Bayou Methodist Church in Bienville Parish, Louisiana. The church has disbanded and the building was moved into the Wimberly Cemetery in Bienville Parish to be used as a Memorial Chapel.

Thomas Martin died April 10, 1928 and is buried in the Wimberly Cemetery, Bienville Parish, Louisiana. Laura died January 18, 1929 at Ringgold, Louisiana. She is also buried in the Wimberly Cemetery.



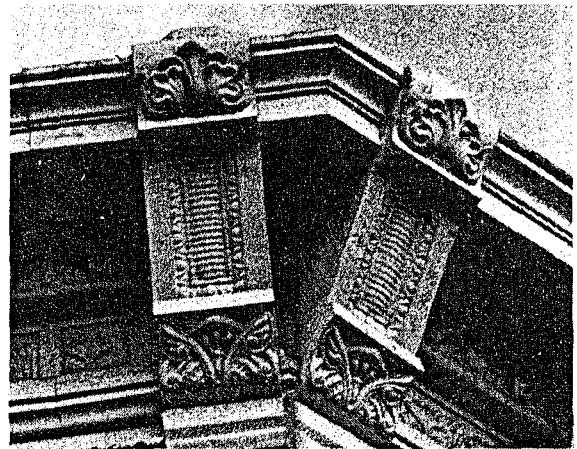


JACK BARHAM

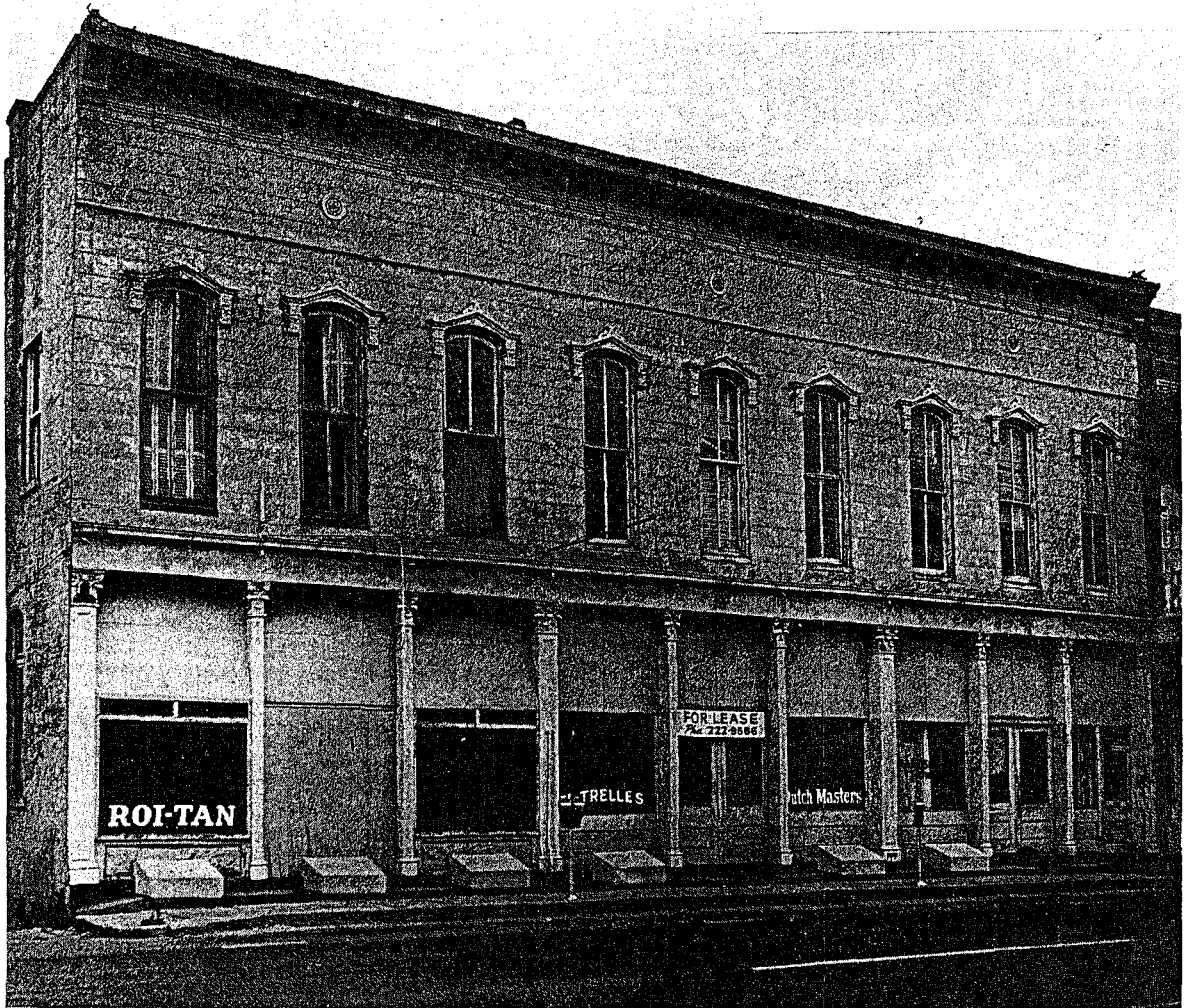
Shreve Square

This block of late 19th century buildings facing the Texas Street bridge was rescued from years of neglect and possible demolition. Creative preservation has turned the Square into a colorful collection of shops, restaurants and drinking establishments. More buildings on nearby Commerce Street await renovation.

Stamped metal and cast iron adorn many of the buildings' facades, forming an eclectic assortment of columns, pilasters, cornices and windows. The variety of details owes less to any design than to the practice of using what stock pieces of decoration were available to builders. An interesting array of brick patterns adds further distinction to the Square's buildings.



“**®**reprinted from *Historic Shreveport* with permission”



The Harrison Building 515 Spring. c. 1880.

If Shreveport has a distinctive architecture, it is found in the 19th century warehouses and commercial buildings on or near the old steamboat landing. Of those remaining, the Harrison Building is an attractive and typical example. Until the 1890s, it was occupied by J. F. Utz, a dealer in hardware, farm implements and supplies.

The cornice is of stamped metal, and may be a later addition. As with the buildings in Shreve Square, it is difficult to describe any set style here because stock pieces of decoration were used as they became available.

“®reprinted from *Historic Shreveport* with permission”

The True Story: Hatfields and McCoys

Presented by *Jerry Hatfield of Texarkana*

During the Ark-La-Tex Genealogical Association monthly meeting on the second Saturday of November at the Randle T. Moore Center, 3101 Fairfield Avenue, the guest speaker was *Jerry Hatfield*. Members had the opportunity to listen to the true story of the Hatfield-McCoy Feud and ask questions to a real Hatfield.

Jerry Hatfield was born in rural Marion County, TX, May 10, 1934. After graduating from high school in Jefferson, TX, he went to work at the Red River Arsenal near Texarkana, TX, as a Mechanic Apprentice. In May 1952, he joined the U.S. Air Force. Using his GI Bill, Jerry got his college degree in business.

At one-time-in-life, when you mention the name "Hatfield" or "McCoy," it reminded many people of the famous Hatfield-McCoy Feud that began during the Civil War in the hills of Kentucky and West Virginia and lasted until 1891.

For many years, Jerry says he denied having any connection to the feuding Hatfields. Then he discovered on the Internet his ties to the Hatfields of West Virginia. He was, in fact, related to the Hatfield clan, and today he claims it proudly. In 2000, he learned that a McCoy Family reunion was planned for Pikeville, KY, the hometown of Randolph "Ol Ran'l" McCoy. The McCoys invited Hatfield descendents to attend. Jerry contacted the McCoys by e-mail, and when they learned he was a professional photographer, they invited him to be the official picture taker.

During his presentation he portrayed the *older brother* of William Anderson "Devil Anse" Hatfield who was known throughout the feud as "Uncle Wall" Hatfield. Born in 1834, he died in prison after serving only six months of a life sentence for the alleged killing of two of Ran'l McCoy's children. "Cotton Top", his nephew, was hanged for the crime in 1890.

Jerry says that since that first reunion, the Hatfields and McCoys have meet peacefully-every year for fellowship and genealogical research. Jerry represents the Hatfield side, dressed as Uncle Wall (Squire Valentine Hatfield).

During his presentation, Jerry said that some of the 1864-1890 feud between the Hatfields and McCoys was caused by: Confederate versus Union allegiance; Alleged theft of a pig; Love affair of Johnse Hatfield and Roseanna McCoy; Murder of Ellison Hatfield on election day, 1882; Execution of three McCoy youths; and Timber rights.

The membership enjoyed this presentation very much, as the presenter portrayed "Uncle Wall" Hatfield.

The Son of John McBride and His Descendants:

"James Louis McBride"

Submitted Herman Weiland

John McBride was born 1800, Lincoln County, Tennessee. He died of Pneumonia in 1855 and is buried in Holmes County, Mississippi. The McBride family moved from Tennessee to Alabama, then settled at Lexington, MS Holmes County in about 1823.

John married in 1819, **Louisa Street**, born in 1803. She too died of pneumonia in 1857 and is buried in Holmes County, Mississippi.

One of the children of John and Louisa McBride was **James Louis McBride**. James Louis was born in Alabama, June 1, 1820, died October 9, 1905 of paralysis, buried in the Zion's Rest Church Cemetery, near Jonesboro, LA.

He was married December 24, 1839 to Frances Edward, born in Leak County, Mississippi. She died three hours after her third child Jesse Edward was born; she was buried in Holmes County, Mississippi.

James and Frances McBride had four children:

A. First born in 1840 and died the same day.

B. John Turner McBride born September 26, 1841 and died May 1931.

He married first, Elizabeth (Lizzie) Brown, May 19, 1861. Their children were:

- 1) Francis McBride married Eli Hu Tullos Child: Elmer
- 2) Willie McBride, fell on a pocket knife out of a tree and died.
- 3) Ida McBride married John A. Watts: Ida and John Children:
 - a. Mattie Watts married O. C. Taylor
Children: Vadie Lee, Grover and Rogena
 - b. Julia Watts married Alva E. Shows
Children: Hullon, Murl, Burness and Everett
 - c. Willie Watts married Albert Tolar (1st)
Children: Bill, Jim and Opal
 - d. Homer Watts married Nora Coleman
Children: Beatrice and Theo
 - e. Orian S. Watts married Ethyl Odom
Children: Valton, Grace, Bonnie, Malcom, Lehman and O. &.
 - f. Charles Watts married Ruth Potter
 - g. Fred Watts married Vivian Cummings
Children: Freddy and Tommy
 - h. John Watts married Connie Lee Wyatt
Child: Wayne
 - i. Ida mae Watts, married Harby Womack
Children: Kennieth and Jimmy Dale
 - j. Zama Watts married A. G. Hurst
Children: Larry and Francis
 - k. Mary Watts married Wyatt Culpepper

Children: Gloria Amelia and Robert Garry

- 4) Julia Emma McBride, born March 3, 1871, died August 8, 1911. Married Dr. Charles Lewis Culpepper, born January 13, 1869, died August 4, 1902.

Their children: a. Child born dead, May 21, 1892.

b. Zamma Amelia, married James Arnold Reed

Children: Joseph Benton, Jack Morton, Elizabeth (Betty) and Nancy Jo.

c. Mittie Ola Culpepper, married Emmett Lee Thompson

Children: Julia Marie (Judy) and Charles Emmett

John Turner McBride second marriage, Nancy Shows.

Their children are:

- 1) George Louis McBride, married 1st, Laura Haufpaur.

Children: Charges and Kurth

- 2) Jessie Turner/McBride, married 1st, Canarie Hargrove

Children: Daisy Dorothy, Warren John (Bud) and Napoleon (Poley) [Jessie's second wife was Mammie Jones Longford.]

John Turner's third wife-widow, Jane Prestridge Hathaway.

John Turner's fourth wife-widow, Sarah Brown

- C. Martha Ann McBride born July 29, 1843 and died Sept. 26, 1924.

Married January 1860 to Robert Wright, 1st.

Child: Robert Wright, Jr., married Mary A. Wyrick

Children of Robert and Mary: Annie, Josie and Carlisle

Married November 10, 1868 to Isaac P. Bush, 2nd.

- 1) Warren Edward (Ed), married Josephine Pierce

a. George Bush married Ineze Maddin

b. Bryant E. Bush married Sally Mat Clinghan

Children: Martha Jo and Doris Elanine

c. Elbert H. Bush

d. Doris Bush, married Otis Simmons

e. Mary Bush, married Bailes

f. Annie V. Bush

g. Joseph Pels Bush

- 2) Hampton F. Bush, married Louisa Barber

a. Earl Bush

b. Elsie Bush

c. John Bush, married May Parker

Children: Johnny Mae and Boy

- 3) Hattie Bush, married Dan Cornett

a. Steve Bush

b. Bill Bush

c. Louisa (not married)

d. Elmer Bush, married Dovie Holesomeback

e. Maggie Bush, married Gordie Black

f. Lois Bush, married Matthew Watkins (3 children)

g. Lillie Bush

D. Jesse Edward McBride born January 29, 1845 and died August 6, 1940, married May 19, 1864 in Laurel County Kentucky to Lucinda Hatcher. Lucinda was born July 18, 1836, and died December 27, 1923.

Child: William Jonathan McBride, born August 15, 1865, died June 20, 1947.

Married Sarah Louie (Salley) Watts in 1885. She died in 1913.

Child: Martha Lucinda (Lula) McBride, married William Waylon McDonald, Jr. Children: Mary Louise, William Roy (Billy) and Ruth Elaine.

James Louis McBride, married second wife Oct. 19, 1845, Nancy Ann Sorrells. Nancy was born July 2, 1829 and died July 18, 1897. Their children were:

A. David born August 2, 1846, died January 17, 1847.

B. William born February 15, 1848, died July 6, 1849

C. Benjamine Franklin (Frank) born August 4, 1850, died Sept. 23, 1920.

D. Francis (Fanny) born July 25, 1853, died February 3, 1930.

E. George L. born October 4, 1855, died December 16, 1875.

F. James Louis, Jr. (Jim) born October 18, 1858, died September 15, 1913.

G. Jefferson Davis (Jeffie) born Jan. 17, 1862, died Jan. 26, 1926.

H. Sarah Luvicy (Sallie) born April 5, 1866, died January 28, 1903.

I. Lucinda (Lou) born 1870, married 1883, died March 1940

Additional Information might be found in McBride Family History (Manuscript, 1950) by Mildred McBride (Mrs. Paul) Stinson, Jonesboro, Louisiana.



The Abney Family
(Letters from a Collection)
Submitted by Willie R. Griffin

Note: The following letters are part of the "John Ardis Manry Collection", [Box 215, and File 680]. The Biographical Sketch is also a part of this collection. This excellent collection is housed at the LSU Archives and Special Collections – Noel Memorial Library, Shreveport, LA.

Letter 1:

Plain Dealing, La.
June 24, 1958

Mrs. Dan H. Griswold
16325 South West 108th Avenue
Tigard, Oregon

Dear Mrs. Griswold:

My copy of the 1958 Family Name Register came today and I was so glad to see where someone had interested themselves in the Abney line. While not related I am interested in area history and quite frequently come across this fine old family that evidently came into Louisiana from South Carolina in the person of **Asbury A. Abney**, who in the census of 1850 of Bossier Parish Louisiana was 33; his wife Catherine McDade, 22, born in Alabama; and children: William A., 2, Francis W., 7 mos., being born in Louisiana. Asbury was clerk of court for this parish before the War Between the States. I recently came across his grave in an old cemetery off the beaten path. Inscription read: Born June 28, 1817; age 49 years, 4 mos., and 7 days. "*The memory of the just is blessed, and he shall be held in everlasting remembrance.*" From tombstone inscription, Mount Zion Cemetery, Ward 6, Bossier Parish, Louisiana. His wife was born March 23, 1827, and died May 22, 1857.

A court record in Bossier District Court dated August 26, 1857, shows Asbury Arnold Abney married Mrs. Louise McDade, widow of James S. Patterson deceased. Contract of marriage is in Miscellaneous Records, page 10. She was to maintain her slaves as her own property and \$1,000 in cash.

I suppose you have searched Magazine of American Genealogy, Vol. 1-7, page 7.

From Bossier Banner, Bellevue, La., December 7, 1872: "On the 4th inst in this parish by the Rev. H. O. White, Mr. W. M. Abney to Miss Sue T. Marks." (Marriage Announcement).

An account of the death of their 4-year-old daughter, Kate Abney Marks, is given in the Banner of January 3, 1878. She was drowned when crossing Red River in a skiff by a submerged snag. She was their only child.

W. M. Abney was born March 2, 1846. He had a brother named Asbury Alexander Abney born December 27, 1861, died November 7, 1866. There were perhaps other children. See History of Northwest Louisiana (1880), p. 123; Bossier Banner, Bellevue, La., November 10 and 17, 1866, and February 16, 1867.

There is a Dr. Francis Abney in Chicago, Ill., who is a descendant of this family. If you are interested further, I will get his address for you.

Let me know if there is any further information you want.

John A. Manry
Box 774
Plain Dealing, La.

Letter 2:

New address!
6656 SW Miles Court
Portland 23, Oregon
June 30, 1958

Mr. John A. Manry
Plain Dealing, La.

Dear Mr. Manry:

How very nice of you to write and send so much information. Thank you so much. I shall add it to my card file. You are right about the ABNEYS. It is a fine old family and the lineage is very impressive. My father was born in South Carolina and quite a few South Carolinians migrated to Louisiana, namely: (these are our kin) *Butlers, Mays, Harrison, Earle, and Lewis*. I'm sure there were others.

I list ABNEY for I have so much on it and thought perhaps I might find someone who would trade me information for helping me down there. First I will tell you what I have to offer in exchange. I have a very fine library, many genealogies, and so many histories and other reference books. Though I specialize on the South, I do have books on Pennsylvania and New England and a gold mine of material on lines to the earliest times in Eng. Scot, Ireland and France. I have dozens of charts and hundred of families list; also books from England, a few from the castles. On ABNEY I have the coat of Arms, a picture of William Albini (Abney) my Magna Charta ancestor, 111 Earle of Arundel and Sussex, d. 1220; Surety for Magna Charta 1215 as Earl of Sussex. This sketch from his seal. He d. near Rome while returning from the 5th Crusade. Have the line back to the very first one and a lovely copy of *The History of The House of Arundel-Pym Yeatman* which is a history of Montgomeries-Albinis-Howards, etc. (Albini, D'Abney and Abney are one and the same).

Dorcas Abney who m. Mattox Mays, S. C. was my ancestor.

I'm crazy about history and could help you a lot with local history of a number of places. My mother's people are Virginians. Do you do any work in Assumption Parish? I know where to go but can't get anyone to do it for me. Do you have anything on a **J. Etienne Ellis, La.**? I don't know where. **Vela** is the name I want in Assumption. I have all the information but I don't want to bother you with it, if you aren't interested.

Thank you very much and I hope to hear from you again soon.

Sincerely,
(Mrs. Dan H. Griswold)

(My oldest sister is a genealogist and got me started. I give her the credit for the charts and helping. I have been able to find a lot myself thou to add to the collection.)

Letter 3:

Plane Dealing, La.
July 2, 1938

Mrs. Dan H. Griswold
6656 SW Miles Court
Portland 23, Oregon

Dear Mrs. Griswold:

You asked where is Plain Dealing. It is in Bossier Parish, in the Northwest corner of Louisiana; 30 miles north of Shreveport, and six miles south of the Arkansas-Louisiana line. I am a printer on the two Shreveport newspapers; also a justice of the peace here, and interested in history, being a past secretary of the North Louisiana Historical Association, now a member of the executive board.

I have been gathering bits of information about my area for a history. I do a lot of research in old newspaper files, court records, and University Libraries in Baton Rouge, La., Austin, Texas, and Washington D. C., Library of Congress. I spend my three-week vacations each year visiting such places.

Assumption Parish is in the opposite end of the state from me, being down near New Orleans. The clerk of court is Francis L. Rodrigue, Napoleonville, La., George L. Rodrigue is the registrar of voters and either of them should have the information you want.

I've just found this in my notes: "Katherine Amanda McDade, dau. Of Annabelle Turner and William McDade, born March 23, 1827, in Alabama, married Asbury Arnold Abney at Mount Meigs, near Montgomery, Ala., on December 18, 1844. They moved to Louisiana in 1845 and located at "Bossier Point." They were the parents of Adelaide Amelia Abney, who married William Henry Scanland. This Scanland was the editor of our weekly newspaper for years. It is not in its 99th year. I knew Mrs. Scanland

personally. Her father, Asbury Arnold Abney, was the clerk of our court before the War Between the States, whom I referred to in my previous letter.

Will you furnish me with the county from which the Abneys came – South Carolina? I want to do some work on the Banks line in Fairfield and Chester counties. My mother was a Banks.

This Butler family from South Carolina is interesting. One was a governor. I think he was in the American Army about 1836 or 40, and was stationed at Fort Smith on the western frontier. Early accounts state he visited in my area here. He bought land on Red River near here, records show.

I shall refer your letter to a lady who is related directly with the Abney Family. Thanks so much for the information it contained.

If I can ever be of any help to you, please let me know.

John A. Manry
Plain Dealing, La.

John Ardis Manry
Biographical Sketch

John Ardis Manry was born November 5, 1903, in Plain Dealing, La. He is the son of Eliza Ann (Banks) Manry and James Turner Manry, an associate of Joel Chandler Harris of "Uncle Remus" fame. After receiving a LL.B. from the Woodrow Wilson College of Law, Manry was admitted to the Georgia bar in 1936. He worked as a printer with the Hurley Printing Company in Camden, Arkansas, from 1921-1923 and with the Democrat Printing and Lithographing Company in Little Rock from 1923-1925. He served as editor and publisher of the Bossier Banner in Benton, Louisiana, from 1925-1928. He then worked as a printer for the Atlanta Journal, from 1928-1944, and then with the Shreveport Journal, from 1944-1968 (?). After his retirement from the Newspaper Production Co. in 1968, he worked part-time for the Lafayette County Democrat in Arkansas.

Throughout his career Manry was active in cultural and historical affairs and contributed numerous historical articles to various newspapers and magazines. Manry was chairman of the Bossier Parish Civil War Centennial Committee from 1960-1965. He was an officer and lifetime member of the board of directors of the North Louisiana Historical Association. He was a member of the International Typographers Union, served as Justice of the Peace in Ward 3 of Bossier Parish, LA, and was a member of the Bossier Parish Democratic Executive Committee. He also served as president of the Graphic Arts Credit Union of Shreveport, LA from 1952-1964.

Manry married Maybelle Francis on October 17, 1927, and they have three children: Mary Francis (Mrs. Aubrey Whitfield Hazel); John Ardis II; and Charles Edward. Mr. and Mrs. Manry made Plain Dealing, LA, their home.

MURPHY FAMILY

The original Murphy family seat in Ireland was in the barony of Ballaghkeen (meaning in Irish "The pleasant roadway") in the easterly part of County Wexford, at Castle Ellis and Ouleartleagh (in Irish "Grey orchard"). The country of the O'Murphy family is still called "Murroes". The family belonged to the tribe of Hy-Felimy, and Murphy and Murrrough and Morrin are Anglicized forms of the name of the original ancestor from which the name is derived. MacMuircoatha, written also O'Mirchada, also O'Muirchu (Muircoatha in Irish means a sea battle and Muirchu a sea warrior);

The last head of the family resided at Oulartleagh, and, according to the Book of Rights, p. 208, the family retained their property until very recently.

See Dr. O'Donovan's "Antiquities," preserved in the Royal Irish Academy, Dublin.

Dermot McMurrrough was an early King of Leinster. The family is now one of the most numerous in Ireland and are scattered all over Ireland. In Cork and Wexford they are the oldest settlers.

Murphy is the Anglicized form of McMorrough, the old regal family of Leinster. On the death of Dermot McMorrough the last acknowledged king of Leinster, his rights, by English law, passed to his only legitimate child, Eva, wife of Richard de Clare, Earl of Pembroke, known as Strongbow. The legitimate male line was continued in the descendants of Dermot's brother, Murrrough, who continue to hold lands in North Wexford."

A prominent member of the family, in the fourteenth century, was Art. McMurrrough, 2d, who reached the age of manhood at a time favorable to his genius and enterprise. Born in 1357, he was at the age sixteen noted for his chivalry, hospitality and general good qualities. In 1365, when about eighteen years, he was elected to succeed his father.

Arthur married a noble lady of the Pale, whose estates had been confiscated by the "Statute of Kilkenny" according to English ideas. The estate consisted of the Barony of Norraugh in Kildare, which included Naas and its neighborhood. This McMorrough demanded restored fully.

From book "The Murphy Family" by Michael Walter Downes, Hartford, Conn., The Case, Dockwood & Brainard Company, 1909. (I have the book, Isabel M. McDaniel) (1962)

MURPHY

CAPT. JAMES MURPHY WITH PICTURE OF WIFE
ISABELLA R. (OWEN) MURPHY AND CHILDREN



Top row: Florence Charles James
Next: Kate Isabella James, Sr. Blanche
Bottom: Lorene Ada Belle

Original picture lent by Mrs. Florence Horner Morris
This picture did belong to Aunt Lorene Murphy Burk

FATHER: James Alfred MURPHY-956

Born: 26 DEC 1812 Place: Philadelphia, Pa.
Nam.: Place: Marriage, Isabella, Owen
Marr: 1835 Place: Texas
Died: 31 JUL 1893 Place: Fort Worth, Tx.
Bur.: Place:

Father: James Alfred MURPHY-954 [307]

Mother: Lorena L. MANNERY-955

Other Spouses:

MOTHER: Isabella OWEN-962

Born: 1815/17 Place: Tx. ?
Nam.: Place: Marriage, James Alfred, Murphy
Died: Place:
Bur.: Place:

Father:

Mother:

Other Spouses:

SEX**M/F CHILDREN**

1 Kate MURPHY-966 Sp: Unknown OLCOTT-979 (1845) [311]
— Born: About 1850 Place: Texas ?
F Marr: About 1870 Place: Texas ?
Died: Place:

2 Charles Bacon MURPHY-967 Sp: Elizabeth June MCMURRAY-968 (1860) [312]
— Born: 12 AUG 1852 Place: Houston, Harris, Tx.
M Marr: 1879 Place: Houston, Tx.
Died: 13 JAN 1928 Place: Houston ?

3 Blanch MURPHY-969 Sp: Unknown PHILLIPS-970 (1850) [313]
— Born: About 1854 Place: Houston, Harris, Tx.
F Marr: About 1875 Place: Kentucky
Died: 1919 Place:

4 James Jr. Alfred MURPHY-971 Sp: Katherine Celestine MULLER-972 (1862) [314]
— Born: 22 MAR 1858 Place: Louisville, Ky.
M Marr: 22 JAN 1895 Place: Texas ?
Died: 1 JAN 1942 Place: Fort Worth, Texas

5 Florence MURPHY-973 Sp: Elben SMITH-974 (1856) [315]
— Born: 1861 Place: Texas ?
F Marr: 1878 Place: Marshall, Harrison, Tx.
Died: 1937 Place: Marshall ?

Name and Address of Genealogist:

VICTOR CHAMBLISS ROSE
2933 JONATHAN LANE
SHREVEPORT LA.
71108

Phone: 318-687-3673

FAMILY GROUP SHEET

HUSBAND John Salmon Murphy

	Day Mo. Yr.	Town	County	State	Notes
Birth	1829	Canton	Ohio		Brother of Catherine
Mar.	1872	Wife #2			Records of Isabella
Death	11Aug1916	Houston	Tx.		McDaniel Houston Tx.
Burial					
Occupation		Military		Church	
Residences					
Other wives					
Father's name	James Murphy of 1786				
Mother's name (maiden)	Lorena Ca. 1789				

WIFE #2 Mary Elizabeth Steadman #1 Loretia Crouch

	Day Mo. Yr.	Town	County	State	Source of information:
Birth					#1 Wife mother of child
Death	26Dec1926	San Antonio	Tx.		lone BkD Pg561Lot 29
Burial		Mission Cem.	San Antonio		in Winnsboro La. from
Occupation			Church		John W. Willis
Residences					
Other husbands					
Father's name					
Mother's name (maiden)					

Sex	CHILDREN	Day Mo. Yr.	Town	County	State	Notes
1	Charles Crouch	b 5Dec1864	Kauffman	Tx.		
	spouse	m 20Apr1887	Marshall	Tx.		
	Ida Bell Sanderson	d 29Mar1945	San Antonio	Tx		
		bur Wife B. 6Aug1870	Covington	Ga.		
2	Edgar Mannery	b Feb1872				
	spouse	m 25Oct1899				
	Margaret Sullivan	d 22Aug1919				
		bur Wife B. 5 Jul 1878				
3	Stella	b				
	spouse	m				
	W. Wilkins	d				
		bur				
4	John Salmon Jr.	b 10Jul1891	Winnsboro La.	Franklin Pr.	Fairyland	
	spouse	m 19Jan1919	Chicago	Il.		Plant.
	Berda Virginia Miller	d 1962				
		bur Wife from	Chicago	Il		
5	James Karl	b 3Sep1893	Winnsboro	La.		
	spouse	m 15Mar1918				
	Kathleen Johnson	d 29Nov1961	Portland	Tx.		
		bur				
6	Arthur Stedman	b 7Jan1900	Winnsboro La.	Fairyland	Plantation	
	spouse	m				
	#1 Lottie Lowe	d				
		bur				
7	#2 Maurene Smith	b 7Jan1902	Winnsboro	La.		
	spouse	m				
	Albert Sidney	d 1902	"			
	Infant death	bur				
8		b				
	spouse	m				
		d				
		bur				
9		b				

No butts about it!



It's Time to
Renew
Renew
Your Membership!

(Use the application provided)

SURNAME INDEX

(A surname may appear more than once on a page.)

Abney 192,193,195	Clingham 190	Fuglar 154
Achee 155	Coates 169	Fuller 175
Adams 173	Cole 174	Gant 175
Adger 153,165	Coleman 189	Garner 175
Adkins 173	Colquette 155	Gaston 175
Ainsworth 155	Colvin 154	Gilmer 153,167
Alibini 193	Conway 154	Glazier 164
Anderson 188	Cornett 190	Glenn 152,165
Andrus 154	Craig 174	Godfrey 175
Antionette 152	Crider 154	Goyne 155
Arundel 193	Crosby 174	Graham 175
Atkins 173	Crouch 199	Green 175,182
Babb 184	Crumley 174	Griffey 175
Bailes 190	Crutcher 154	Griffin 157,192
Banks 195	Culpepper 189,190	Griswold 192,194
Barber 190	Cummings 189	Grovaner 165
Barham 186,187	D'Abney 193	Guice 175
Barlow 155	David 174	Guisinger 154
Barnes 173	Davis 154,191	Hairell 175
Barnett 155	Debose 174	Hall 153,182
Beasley 152	De Clare 196	Hampton 176
Belcher 153	Dewitt 174	Hancock 166,170
Bell 182,183	Dickson 153,154	Hannon 176
Belton 173	Diddle 174	Hardy 176
Benjamin 165	Dillard 174	Hargrove 190
Birril 173	Doles 169	Harries 176
Black 190	Douglas 152,174	Harris 165,176,182,195
Bloome 173	Downes 196	Harrison 193
Bluestein 165	Dubose 174	Hatcher 191
Bolen 168	Earle 193	Hatfield 188
Boyd 173	Edward 189	Hathaway 190
Brown 173,189,190	Edwards 169	Haufpaur 190
Bryan 185	Elder 174	Hazel 195
Bush 190	Elise 174	Henderson 176,178,182
Butler 169,193,195	Ellis 175	Henson 176
Campbell 153,165	Erambert 154	Herald 154
Cardin 166	Etienne 194	Herron 169
Carrier 165,168,169	Evans 182	Hightower 176
Carter 154,169,173	Faulkner 175	Holmes 155,176
Cavett 154	Flaxman 165	Horner 197
Chambers 165	Fleming 165,167,168	Horton 176,182
Chambliss 198	Ford 175	Howard 176,177
Chandler 195	Francis 195	Humphery 177
Clark 173,174	Franklin 191	Hurst 189
Clay 174	Franks 175	Irwin 169

SURNAME INDEX

(A surname may appear more than once on a page.)

Jacobs 177	Martin 185	Miller 157,158,199
James 177	Maskburn 157	Mims 158
Jefferson 185	Mason 157	Mingo 158
Jennings 152,165,170	Mathews 155,157	Mins 158
Johnson 177,199	Mathis 178	Minshew 158
Jones 171,177	Mays 157,193	Misell 158
Kidd 154	McBride 189,190,191	Mitchell 158,178
King 177	McCall 178	Mixon 158
Kingsley 165	McCanothy 157	Mizell 158
Kyle 177	McClain 178	Mobley 158
Kyles 165	McClure 178	Moffett 154
Land 165	McCoy 157,188	Monroe 158
Lane 154,177	McCullen 157	Moody 158
Larkin 165	McCullough 157	Moore 155,158,188
Latin 177	McDade 192,193	Moreland 158
Lee 177,182	McDaniel 157,196	Morgan 178,182
Lewis 157,173,193	McDonald 191	Morgon 178
Lias 177	McDowell 157	Morrin 196
Lindsey 177	McElroy 157	Morris 158,178,197
Littleton 177,182	McEntee 172	Morrison 158,178
Lockett 157	McGlawn 157	Morrough 196
Loe 157	McGraw 157	Mosley 158
Loftin 155	McGuire 157	Mosely 158,178,182
Long 157	McInis 157	Moss 158
Longford 190	McKeen 157	Moton 158
Louries 157	McKeithen 157	Muller 198
Love 157	McKethan 157	Munson 158
Low 157	McKinsey 157	Murphey 158
Lowe 177,199	McKnight 178	Murphy 196,197,198,199
Lucas 157	McLaughlin 157	Murray 158
Luries 157	McLead 157	Murroes 196
Lyles 157	McLeland 157	Murrough 196
Lynn 154	McMorrough 196	Myers 158
MacMuircatha 196	McMurray 198	Myrick 158
Madden 157,190	McMurrough 196	Myzell 158
Malong 157	McNeal 157	Nance 155
Mangham 157	McRey 157	Narred 158
Mannery 198,199	McWright 157	Nattin 152,153
Manning 157	Mellon 157	Neal 158
Manry 166,192,193,195	Melton 157	Nelms 158
Marbury 157	Melvin 157	Nelson 158,165
Margan 157	Menter 157	Nepolean 158
Marks 152,153,192	Mercer 157	Netles 158
Markstain 157	Merchant 157	Nettles 158
Martin 157,165,177,178,	Methvin 184	Newman 158

SURNAME INDEX

(A surname may appear more than once on a page.)

Newson 158	Perdew 159	Raodd 179
Newton 169,184	Perill 159	Rasco 159
Nichols 158	Perrett 159	Ratcliff 159
Nix 158	Perry 159	Rawlins 159
Nobles 158	Person 159	Rawson 159
Nolan 158	Peters 159	Ray 159
Nolen 158	Phelps 179	Reader 159
Noling 158	Phels 179	Reagan 159
Norman 158	Phillips 179,198	Reaves 154
Norris 158	Pierce 190	Redick 185
Oden 158	Pierson 159	Redhimer 159
Odom 189	Piles 159	Reed 159,190
O'Donovan's 196	Pipkin 179	Reeves 159
O'Kee 178	Pipkins 179	Reggio 184
Okee 178	Pisses 159	Rencher 182
Olcott 198	Pitman 159	Rentz 159
Olivant 158	Pittman 185	Reynolds 159
Oliver 158	Poland 159	Rhodes 159,179
O'Mirchada 196	Pool 159	Richardson 159,179
O'Muirchu 196	Porter 159	Ricks 159
O'Murphy 196	Portess 159	Riddle 159
O'Neal 158	Potter 189	Rigdon 159
Ooutz 158	Potts 159	Riley 159
Outen 158	Pouncy 179	Rise 159
Overton 158	Pratt 155,159	Roadd 179
Owen 197,198	Preslar 159	Roane 159
Owens 155,158	Prestridge 190	Roberson 159
Ozley 158	Price 159	Roberts 159,179
Page 158	Prince 159,179	Robinson 159,179
Palmer 158	Prothro 159	Rochell 159
Parham 158	Pruson 159	Rodding 159
Parish 158	Puckett 159	Roden 159
Park 158	Pullig 159	Rodrigue 194
Parker 158,190	Pullin 159	Rogers 159
Parnell 158	Pulpress 159	Roller 154
Pate 158	Pushing 159	Rolley 159
Patterson 158,192	Pym 193	Rose 155,198
Paul 158	Raborn 159	Ross 159
Payne 158	Raburn 159	Roundtree 159
Pearce 158	Radhimer 159	Row 159
Pease 159	Rainey 159	Rowell 159
Pennigton 159	Rambean 159	Ruff 159
Pennington 159,179	Randol 159	Rushing 159
Pentcast 159	Ransburg 179	Sale 160
Peoples 159	Ransom 159	Salmon 199

SURNAME INDEX

(A surname may appear more than once on a page.)

Samuels 179,180
Sanders 180
Sanderson 199
Sannders 160
Sapio 160
Scanland 194
Scheen 160
Scoggin 160
Scoggins 180
Scott 160,165
Scroggin 160
Scroggins 180,182
Sentell 153,154,169
Serpell 160
Sewell 169
Shaw 160
Sheffield 154
Shehee 160
Shepard 180
Sheppard 160
Sherwood 160
Sheshee 160
Shively 160
Shows 189,190
Sibley 169
Sidney 199
Simeon 160
Simmons 159,190
Simon 166,180
Simpson 159,168,169,180
Sims 180
Skinner 154
Sledge 160
Sloan 180,182
Smart 160
Smelley 160
Smith 160,170,180,198,199
Sneed 160
Sorrells 191
Southern 160
Spinks 160
Sprawls 160
Stafford 160
Stall 160
Stamps 160
Stanley 160
Staples 160
Starks 160
Steadman 199
Stedman 196
Stephens 160
Sterns 180
Stevenson 160
Steward 160
Stewart 160
Stinson 191
Stover 160
Strause 160
Street 189
Streetman 160
Stroman 160
Strouther 160
Struman 160
Stuck 152
Stweart 160
Sullavan 160
Sullivan 160,199
Survine 180
Sutton 160
Swank 160
Sweitzer 163
Talbot 160
Taylor 160,161,180,189
Teacle 161
Tenison 161
Terry 165
Theus 161
Thomas 161,180
Thompson 161,190
Thornton 161
Thurmond 161
Tibbs 161
Tilley 161
Tillman 161
Tilly 161
Timberlake 169
Timmons 161
Tinker 182
Tipton 155
Tobin 161
Todd 161
Tolar 189
Tooke 161
Trip 161
Tucker 161
Tullis 161
Tullos 189
Turner 154,161,180,189,190,
194,195
Tyler 70,161
Underwood 161
Utz 187
Vale 161
Valentine 188
Vales 161
Van 161
Vance 161,166,167,180,182
Vansant 161
Vaughan 169
Vela 194
Vernon 161
Versant 161
Vick 161
Vickers 161
Vosely 181
Wadkins 161
Waites 181
Waldon 161
Walen 161
Walker 161,181
Wall 154,161
Walton 161
Wardlow 161
Warren 161
Washburn 155
Washington 154,161,181
Waters 161
Wates 181
Watkins 161,190
Watson 161
Watts 161,189,191
Webb 161
Weeks 161
Weiland 184,189
Weir 161

SURNAME INDEX

(A surname may appear on more than once on a page)

Welch 161
Wesley 153
Wharton 181
Whatley 163,185
Whisner 161
White
155,161,181,192
Whitfield 166,195
Whitley 161
Whitlow 161
Whorton 181,182
Wiggins 161,162
Wilder 162
Wilkerson 162
Wilkins 199
Willer 168
William 153
Williams 162,165,182
Williamson 162
Willis 199
Wilson 162,182,195
Wimberly 162
Winfield 162
Wingard 162
Wise 165
Womack 189
Wood 162
Woodard 162
Woodruff
165,166,169
Woods 162,184
Wooley 162
Wooly 162
Worsham 162
Wright 155,162,190
Wyatt 189
Wyche 169
Wyrick 190
Yancy 182
Yarbrough 182
Yearwood 162
Yeatman 193
Young 162,182
Youngblood 162
Zeigler
166,167,169,170