

---

VOLUME 41

FIRST QUARTER 2007

NUMBER 1

---

PUBLISHED QUARTERLY BY

ARK-LA-TEX GENEALOGICAL ASSOCIATION, INC.

P.O. BOX 4463  
SHREVEPORT, LOUISIANA 71134-0463

# THE GENIE

VOLUME 41

FIRST QUARTER 2007

NUMBER 1

## TABLE OF CONTENTS

### FEATURES

- 2 Gilmer-Jones Letter  
By Dale Jennings
- 6 Gleanings from a Past Genealogical  
Seminar on Arkansas Research  
Submitted by Herman L. Weiland
- 21 Genealogist's Disease
- 22 Obituaries & Death Notices
- 25 Ancestor Chart of Daniel Ward  
Owens  
By R. L. Owens, Sr.
- 31 The 40-Year Search for Nathaniel  
Ezra Milton Kidd (1858-1933)  
By Raymond C. Kidd
- 33 Homestead Entry Notices: Bossier  
Parish ( From the Bossier Banner,  
Benton, LA)  
Submitted by Willie R. Griffin
- 36 Epps Cemetery (African American  
Section)
- 40 Have You Paid 2007 Dues?
- 40 Does ALTGA Have Your Correct  
Address?
- 41 2007 NGS Conference and Family  
History Fair, Richmond, Virginia

- 42 Seek New Editor for *The Genie*
- 43 Louisiana Baptist Church Records on  
Microfilm at the Southern Baptist  
Historical Library and Archives
- 46 Query Guidelines
- 47 List of 20 Grand Jurors Selected  
for January, 1900, Term (State of  
Louisiana, Parish of Bossier)
- 48 Materials Submitted for Publication in  
*The Genie*

### DEPARTMENTS

- 1 The President's Message  
By Willie R. Griffin
- 20 Exchange Periodical Review  
Compiled by Constance Whatley
- 29 Queries  
By Isabelle Woods

ARK-LA-TEX GENEALOGICAL ASSOCIATION, INC.

Post Office Box 4463  
Shreveport, Louisiana 71134-0463

The *Ark-La-Tex Genealogical Association, Inc.* is a non-profit, non-sectarian, non-political, educational organization dedicated solely to the cause of genealogy. This organization is governed by these purposes:

To collect, preserve, and make available genealogical materials, documents, and records; to encourage an interest in genealogy and to sponsor educational programs for its development; to promote and publicize the City of Shreveport, Louisiana, as a major genealogical research center for genealogists and historians; to cooperate with and assist all other genealogical, historical, and patriotic societies in the furtherance of these purposes; to compile and publish a quarterly composed of records and data related to the science of genealogy.

The *Ark-La-Tex Genealogical Association, Inc.* meets on the second Saturday of each month from 1:00 p.m. to 3:00 p.m. at the Randle T. Moore Senior Citizen Center, 3101 Fairfield Avenue, Shreveport, LA.

Dues for membership from January 1 through December 31 of each year in the *Ark-La-Tex Genealogical Association, Inc.* are \$20.00 for an Individual Membership and \$25.00 for an additional family member, same household, and one quarterly per household.

All members receive four issues of The GENIE, which is published quarterly.

The *Ark-La-Tex Genealogical Association, Inc.* will publicize a book of genealogical interest in The GENIE when submitted by the publisher or an author. These books are then donated to the Shreve Memorial Library, Broadmoor Branch Genealogy Department, 1212 Captain Shreve Drive, Shreveport, Louisiana 71105, where they are made available to the public. The Ark-La-Tex Genealogical Association, Inc. periodically donates other genealogical material to this library.

The *Ark-La-Tex Genealogical Association, Inc.* welcomes queries, which are published free in The GENIE. A query must be no more than seventy (70) words, either typewritten or legibly handwritten.

## BOARD OF DIRECTORS FOR 2007

President	Willie R. Griffin	wraygriffin3@bellsouth.net
First Vice President	Reed Mathews	reedmathews@yahoo.com
Second Vice President	Phil Adderley	phil@311research.com
Recording Secretary	Cynthia D. Millen	millencndyl@wmconnect.com
Corresponding Secretary	Victor C. Rose	vcrnels@aol.com
Treasurer	Herman L. Weiland	(318) 746-5811
Trustee (2006-07)	Elizabeth Lewis	elewis@softdisk.com
Trustee (2006-07)	Anne Wise	annewise@suddenlink.net
Trustee (2007-08)	Cynthia D. Millen	millencndyl@wmconnect.com
Trustee (2007-08)	Ray Kidd	historian@kiddfamily.org
Past President	Raymon Owens	blickblaque@shreve.net

## PUBLICATION (THE GENIE)

Editor	Willie R. Griffin	wraygriffin3@bellsouth.net
Book Reviews	Herman L. Weiland	(318) 746-5811
Queries, Typing & Indexing	Isabelle Woods	fdoll41@cs.com
Printing	Victor C. Rose	vcrnels@aol.com
Labels	Michael Broussard	
Bulk Mailing	Herman Weiland	
Bulk Mailing	Reed Mathews	reedmathews@yahoo.com

## ALTGA COMMITTEES

Hospitality	Thelma Sabbath	(318) 635-3637
Hospitality	Cynthia D. Millen	(318) 929-2983
Telephone	Vernell Rose	(318) 687-3673
Finance	Isabelle Woods	(318) 746-8873
Programs	Anne Wise	(318) 747-9878
Publicity and Greeter	Chris Stoll	(318) 746-0383
Exchange	Constance Whatley	(318) 861-4336
Education	Phil Adderley	(318) 286-7762
Web Page	Jim Johnson	(318) 746-1851
Seminar	Willie Griffin	(318) 631-6031
Membership	Reed Mathews	(318) 797-6550

**Visit our website:** <http://www.rootsweb.com/~laaltga/>

# Statement of Publication

*The Genie* is published quarterly with issues in March, June, September and December. Each member receives four issues for each year of membership. All material published in *The Genie* is compiled and contributed by the members. Members and nonmembers of the Ark-La-Tex Genealogy Association may contribute material for publication in *The Genie* (bible records, cemetery listings, diaries, wills, etc.). Such contributions are appreciated and encouraged. Send material for publication to *The Genie* at the Association's mailing address. Material will be used at the discretion of the Editorial Review Board as space permits. We reserve the right to edit and/or condense material as needed. Submission deadlines are the last week before the first day of the month of quarterly publication.

The Association exchanges periodicals with other genealogical and historical organizations publishing data of general interest. These periodicals are then donated to the Broadmoor Branch Genealogy Section of the Shreve Memorial Library. We regret that we cannot exchange with limited family organizations. However, send samples of your publications for review. Since many publications possess information of value concerning families contain therein.

When Cemetery Records are submitted, include the name of the contributor, the copier, date copied and cemetery locations (such as road name or number, community, etc.) and also the Section, Township, and Range, if known. When Bible Records are submitted, give date and publisher of the Bible (if known), date copied, name of the contributor, name of present owner and the original owner.

Queries are free and encouraged. Please submit them typed or very plainly written. Space is limited. Please be brief and concise, using no more than 70 words per query. The editor reserves the right to edit or reject queries not suitable for publication.

*The Genie* cannot be responsible for errors or inaccuracies, but will hasten to publish corrections. Please read the material carefully and advise the Association in writing of corrections.

This publication is indexed in the Periodical Source Index published by the Allen County Public Library Foundation, Ft. Wayne, IN.

## Copyright Laws

All who submit material from any source should be aware of copyright restrictions. When applicable, permission to use published material must be in writing and should be included when manuscript is submitted. Source and date of information used should be indicated.

## *The President's Message*

Where do we go from here? The new Board of Directors took office in January 2007 and began reviewing the goals and activities of the Ark-La-Tex Genealogical Association. The board discussed recruiting and retaining member, publications, training programs, social programs and fundraising (the seminar). The board is trying to recruit volunteers to become part of the standing committees. Yes, we need your help. This will be a grand opportunity to become involved with the many activities of the Association.

We will be looking for more input from you (the membership) during this year. We need suggestions for the monthly speakers. If you know someone who has some expertise and might volunteer to be a speaker, let the Association know. You may contact Anne Wise (our program chairman) at: [annewise@myway.com](mailto:annewise@myway.com).

Another area of concern the Association has is that we learn more about your genealogical needs and interest, so that we can adjust our membership services to meet your needs better. Let us hear from you.

Be reminded that the Beginners Class will take place in May and the annual Seminar will take place in August, visit our website for information at: [www.rootsweb.com/~laaltga/](http://www.rootsweb.com/~laaltga/).

Future publications of the GENIE should not be expected to be compiled and published by one or even just a few members; they need to be produced through the efforts of all members whether they live in Caddo Parish or elsewhere (the Ark-La-Tex). We desire that some members will take the time and the willingness to research the census, a courthouse or a cemetery as has been done in the past years for printing in past volumes. Every member can make some kind of contribution. It may be an old bible record that has been in the family for many generations; it may be an old family photograph; or it may be a family legend about a well known ancestor. Old photographs of long gone buildings or locations can be used as fillers on pages that are not full. Other ways of helping may be to copy certain information from the Courthouse or the Archives. You could write a profile of a prominent ALTGA citizen, however current and recent political personalities should be excluded. At the discretion of the editorial staff, some submissions may not be used.

The future of our Association will depend upon efforts by the members to assure its survival.

Sincerely,  
Willie R. Griffin

## GILMER-JONES LETTER

By Dale Jennings

This nearly 150-year-old personal correspondence from "Mattie G. Gilmer" to "Mrs. Jones" was found in the Roland Jones Family Papers of the LSU Shreveport Archives. It reveals more about the Gilmer and Vance families than the Roland Jones family, but holds little interest without an understanding of the events and personalities therein. Appearing below is the verbatim letter followed by an analysis of its content.

Woodlawn Feb 19<sup>th</sup> 1860

My dear dear Mrs Jones

I have always loved you, but upon the receipt of your kind affectionate letter, I loved you ten thousand times better than ever. It was a sweet comfort to be reassured of your love and to feel that I have the sympathy of one I am honored in having as a friend. Since we last met I have drunk the cup of bitterness to the dregs. I have suffered God only knows how much. As year by year glides on, those that are nearest & dearest to me pass away. Oh! How little did I imagine when I last pressed that darling precious sister to my heart that it would be the last time I should behold her on this earth. Yes deeply & truly do I mourn her loss & as long as life lasts will her memory live fresh in my heart. She was as purely good & noble as human nature ever gets to be. I long to see her sweet face once more. She was a mother to me in every sense of the word; in all of my little trials & troubles, she was ever ready to sooth comfort & advise me & was always so patient & forbearing with my failings. A child would not have been more dependent on a mother than I was on her. When I heard of her death I thought my heart would breake. I murmured against God & prayed to die; but oh! when I thought of her poor little orphan children new life inspired me. I felt that I could have arisen from my bed of sorrow that moment & fly to them, & press them forever to my heart. I remembered how often Sis Mary had said, that in the event of her death I must have the rearing of her children. I feel my incompetency for as sacred a trust. But I will pray to a good & merciful Father to give me knowledge & wisdom, & to guide me aright. God knows that I will act toward these sweet babes, as if they were my own. They are dearer to my heart than anything on earth. Oh! How can I be ever sufficiently thankful to dear good brother Whitt. He respects & reverences every wish of my sister & is willing & anxious for me to carry out the dearest wish of my Sis's heart in having her children brought up in our faith. If that privilege had been denied me, I don't think I could have lived through my trouble. Now I have much to live for, & oh! may I perform well my part. I feel that I have been very rebellious against the will of God & have sined exceedingly. It was long long before I could say "Thy will oh! God not mine be done." I have



prayed much of late, & have derived great comfort. God is good & merciful & when he sends us deep afflictions, he sends us strength & solace from above. I can realize now that this is not our home, & that we have only a few fleeting years to sojourn here, & most earnestly do I wish to give the trust & best affections of my heart to God, & to prepare myself dayly for that bright & beautiful home that our good God has prepared for those that love & serve him. Oh! How my heart is buoyed up with hope when I think of being reunited to those I loved so well on earth. Oh could we properly understand the shortness & uncertainty of life, we would not grieve so much over temporal misfortunes. What matter is it if our path here is strewn with thorns provided it unites us more to the Savior. God is our merciful father & knows what is best for his children. When we think of it in this light it is not hard to bow in submission to his holy will.

You cannot be more anxious to see me my dear Mrs. Jones than I am to see you. At first I did shrink from coming in contact with those I had known in more joyous days but since the receipt of your kind letter my feelings have undergone quite a change. I shall accept of my first opportunity to visit you. Babe leaves in about two weeks for Mont. I will get Aunt Betsy to stay with me at Buckhall, or at Uncle Washes. I am very much in hopes that you will favor me with a visit. The lady that you could not designate was a Mrs. Gayle, a first cousin of mine. Oh! I wanted you to see her so much. I know you would have fallen completely in love with her. She is so fascinating, sweet & good & at times I think her very pretty. She left us for Mont. last week. I thought I would have cryed my eyes out. She added so much to my happiness & was so lively & pleasant. I wish you could see little Mattie's wardrobe. I never saw such a quantity of pretty things. Her relatives in Mont. have never seen her & her mammer is determined that her debut shall be a favorable one. Babe has forgotten herself in her child. I do want to see your Babe so much, & to know what name you have given it. Give my love to Kate & tell her that I am coming down as soon as I can. I want to see all of your sweet children. Give my very best respects to Judge Jones. I was so glad when I heard that he was elected. Give my best also to Mrs. Hodge & Mrs. McRody. My brothers send their respects to you. Babe joins me in much love. I remain your true friend. P. S. Aunt Betsy Talliafero has just been on a visit to us. It gave us so much pleasure. Please destroy this scrawl. I am ashamed to send it. I don't write this bad all the time. That is little comfort. Mattie G. Gilmer

Anne Neville Stokes Jones is the daughter of North Carolina governor Montford Stokes and wife of pioneer Shreveport attorney, legislator and judge, Roland Jones. Martha George Gilmer is a wealthy young Bossier Parish planter. Mattie's mother had died in Montgomery, Alabama, in 1839 when she was two. She and her four-year-old sister Mary and their little sister Eliza (Babe) were left in the care of an aunt and uncle. Their father, James Blair Gilmer, and grandparents, George O. and Martha Gilmer,



shortly afterward removed to Claiborne, soon to be Bossier Parish, in northwest Louisiana. Here the Gilmers established a large number of cotton plantations on the Red River. It is not known if the children were brought over from Alabama before or after James Gilmer remarried to the wealthy widow Paulina Pickett in 1843.

Mattie Gilmer, twenty-three and unmarried, is evidently living with her sister Eliza Gilmer Graves on the Graves' Woodlawn Plantation in north Bossier Parish. The girls' father had died in Cuba of yellow fever in 1856. Their beloved grandmother Gilmer passed away the following year. Mattie's dear sister Mary, the wife of Doctor Samuel Whitfield Vance, has now died. We know from the 1860 mortality census that Mary Vance died at age 25 in October 1859 of "Disease of Heart" after an illness of 8 days.

The 1860 population census shows Mattie as head of household between the residences of S. W. Vance and J. W. Vance on the river below Woodlawn. She may be living on her deceased sister and brother-in-law's Buckhall Plantation or her own adjacent Kingston Plantation. Doctor "Whitfield" Vance's bachelor uncle, Doctor James Washington Vance, is living on his own plantation also adjacent to Buckhall. He is Mattie's "Uncle Wash," who was much like a brother to the Gilmer girls' father. (See ALTGA Newsletter Fourth Quarter, 1994, "Letter from a Concerned 'Uncle'"). True to her sister's wishes, Mattie is raising Mary's two "little orphan children," Sallie and James. She has had her two-year-old niece enumerated as "Mary." Her nephew James is eight months old. The census report indicates that Mattie has real property valued at \$105,000 and personal property worth \$88,286. The 1860 slave census shows that she has 83 slaves. The sisters had received property from their father that included a fully stocked river plantation for each. Mary had gotten Buckhall, Mattie Kingston, and Eliza the Egypt Plantation near Woodlawn.

In her letter to Mrs. Jones, Mattie expressed her gratitude that "brother Whitt" had consented to let the Vance children be brought up in "our faith." This is the only aspect of the letter that is unclear. She was almost certainly not referring to the Episcopalian denomination of which Mrs. Jones was a devout follower. There is evidence that the two older Gilmer sisters, Mary and Mattie, had come under the influence of the Catholic religion. Very little is known about the girls' childhood, but their education was thought to have been comprehensive. Mary Gilmer Vance's granddaughter Mary Lee Scovell, in her personal reminiscences (John Manry Collection, Box 27, LSUS Archives), told that James B. Gilmer had spared no trouble or expense to procure the best education possible for his daughters. Mrs. Scovell had in her possession an 1853 letter written in Bossier Parish by James Gilmer to his daughter Mary while at school in Baltimore. It would not be out of the ordinary if they had attended a convent school at some point. The first Catholic church in the area, Holy Trinity, was not established in Shreveport until 1858 (Holy Trinity church history tells that in 1857 a Mrs. Vance (Mary) offered \$500 toward the church, her sister (Mattie?), \$100, and her grandmother (Martha Gilmer), \$50). Its convent school was begun shortly after the letter was written. Mattie's Aunt Sally Gilmer, her father's sister, had attended such a school in south Louisiana for a time. School records show that she had not converted.

Mary was married to Doctor Vance by the Reverend Fyers(?) in 1854, and Eliza to Rufus Graves by Reverend Chapman in 1858. Mattie was married twice, having been widowed from her first husband. She was married to Patrick V. O'Neill by Holy Trinity's Father Pierre in September 1863, and to Patrick J. Kennedy by Father Gentile in April 1875. Mattie received a mass when she died in July 1883.

Mattie's cousin, Sallie James ("Mrs. Gayle") was widowed from her first husband, John Gayle. Sallie's mother and Mattie's mother were Gilmer sisters. The former married a James and the latter married a Gilmer cousin, James B. Gilmer – Mattie's father. Sallie Gayle and Dr. Samuel Whitfield Vance were married on April 4, 1861. She and Doctor Vance apparently raised his children in the Protestant faith.

This analysis of Mattie Gilmer's 1860 letter to Mrs. Jones is concluded with these sidelights. Mattie mentioned her brothers, and "Kate," who was Mrs. Jones' 12-year-old daughter. The Gilmer sisters were raised in part by their father and step-mother, the widow of wealthy planter and co-founder of Shreveport, James Belton Pickett. Also, in that household were Mattie's step-brothers and sister, John, James, Jr., and Sarah. Later James B. Pickett, Jr., would marry Kate Jones. Still later, Kate's niece, also Kate Jones, married James B. Pickett, III – her cousin. Anne Jones had lost a baby daughter, Anne, and named her new baby Annice, called "Annie."



Mattie G. Gilmer  
Photo Courtesy of Suzy Meyer, Descendant

# Gleanings from a past Genealogical Seminar On Arkansas Research

Submitted by Herman L. Weiland

The Ark-La-Tex Genealogical Association holds seminars on various genealogical topics. The information provided is very helpful to the attendees at that seminar; however, many members are unable to attend and fail to get that information.

The following pages of information were given to attendees at a seminar on "*Arkansas Research*" and may be of some help to those of you who are researching your "Arkansas Roots"

This seminar was held in August 1997 and was led by Desmond Walls Allen, one of the premier genealogical authors of our time. She is the owner of **Arkansas Research** and through that company, she has aided genealogists everywhere by writing and compiling over 160 books and articles about Arkansas genealogical and historical materials. She appeared as the guest expert on Part I of the PBS television series, **Ancestors**.

Included in this information is:

- Ancestor Problem Resolution Worksheet
- Ancestor Problem Resolution Bibliography and Source List
- Short, Short Guide to Source Citation
- Map Resources for Genealogists
- Research in "Arkansaw"



# Ark-La-Tex Genealogical Association, Inc.

9 August 1997, Shreveport, Louisiana

Desmond Walls Allen, PO Box 303, Conway, AR 72033 desmond@intellinet.com

## Ancestor Problem Resolution Worksheet

Problem Ancestor's Name: \_\_\_\_\_

Childhood names / Nicknames: \_\_\_\_\_

Name changes: \_\_\_\_\_

Attach a fully-documented family group sheet to this form - the National Genealogical Society form is preferred.

Summary of Problem: \_\_\_\_\_  
\_\_\_\_\_  
\_\_\_\_\_  
\_\_\_\_\_  
\_\_\_\_\_

Writing the facts of the situation will often help focus or clarify the problem.

These facts are known: \_\_\_\_\_  
\_\_\_\_\_  
\_\_\_\_\_  
\_\_\_\_\_

Cite sources! Recheck all the information to see if there could be any misunderstanding of the facts.

List all the sources from which key information was taken:

_____	Original or Secondary?
_____	Original or Secondary?
_____	Original or Secondary?
_____	Original or Secondary?
_____	Original or Secondary?
_____	Original or Secondary?

For each secondary source listed above, check the original.

Source: _____	Original verified _____
Source: _____	Original verified _____
Source: _____	Original verified _____
Source: _____	Original verified _____

List ALL possible *spelling variations* of the name: \_\_\_\_\_  
\_\_\_\_\_

Check **SOUNDEX** codes for each of these spellings.

List ALL possible *misspellings* of the name:

Consider first-letter substitutions: L for S, F for T, I for J; consider pronunciation problems.

Time period of the problem:

Place of the problem:

Remember, the place to concentrate on is the one where the ancestor was last known for certain to live.

Can the place name have changed? ☐ yes ☐ no ☐ maybe

Is there more than one place with that name? ☐ yes ☐ no ☐ maybe

Has the county changed? ☐ yes ☐ no ☐ maybe

Are copies available of *maps* of the area?

What *laws and customs* were in effect for the time and place?

What *local jurisdiction* records exist for the earliest known residence of the problem ancestor?

What local jurisdiction records exist for *surrounding counties*?

What *state-level* jurisdiction records exist?

What *national-level* jurisdiction records exist?

Are there *church records* for the time and place?

Are *newspapers* for local and/or surrounding areas available?

Are *manuscript collections* available that might help?

Look for funeral home records, store ledgers, correspondence, diaries, journals, county records out of their natural habitat, photograph collections, etc. (Investigate the National Union Catalog of Manuscript Collections)

What *other records* might help?

Search every known extant record for the time and place, including deed records long afterward, where the ancestor lived.

Have *queries* been placed in local, state, and national publications?

Do *other researchers* have theories/solutions/suggestions about the problem? List those and describe why or why not their findings may or may not be valid.



Are there local, county, regional, and/or state *periodicals* with possible information about the family, place, and/or problem?

Have any articles or books been published about *methodology* related to the problem?

Have any *family histories* about this or related families been published? Are they accurate? How do their findings impact the problem?

How *common* is the surname of the problem ancestor? \_\_\_common \_\_\_uncommon \_\_\_so-so

Are there identifiable *naming patterns* or unusual given names of family members?

Who were among *groups* of people associated with the problem ancestor?

Collateral family lines

Create a group sheet for each *child* of the problem ancestor

Create a group sheet for each *sibling* of the problem ancestor

Extended family with same surname

Who else with the same (or similar) last name lived in the area of the problem ancestors?

In-laws

Include the people with whom there is any relationship created by a marriage.

Neighbors (from census & land records)

Fellow travelers (migration patterns the same)

Business associates

Who was the neighborhood blacksmith, the local justice of the peace, the tavern-keeper, merchant, and physician?

Who witnessed the ancestor's deeds? Who served as his administrator/executor? For whom did he serve as administrator?

What slaves were bought, sold, and inherited in the family?

Who were fellow church members?

Who is buried in the same cemetery with the ancestor? \_\_\_\_\_

Who were the ancestor's military comrades-in-arms? \_\_\_\_\_

What records created by these people might be helpful in solving the problem?

\_\_\_\_\_

\_\_\_\_\_

Create a list of names from allied and associated families in the problem area who might have migrated with the ancestor:

\_\_\_\_\_

\_\_\_\_\_

How might a *professional researcher* in the problem's area be helpful? \_\_\_\_\_

\_\_\_\_\_

TO-DO List (research objectives):

\_\_\_\_\_

\_\_\_\_\_

\_\_\_\_\_

\_\_\_\_\_

\_\_\_\_\_

\_\_\_\_\_

\_\_\_\_\_

FOLLOW-UP List:

\_\_\_\_\_

\_\_\_\_\_

\_\_\_\_\_

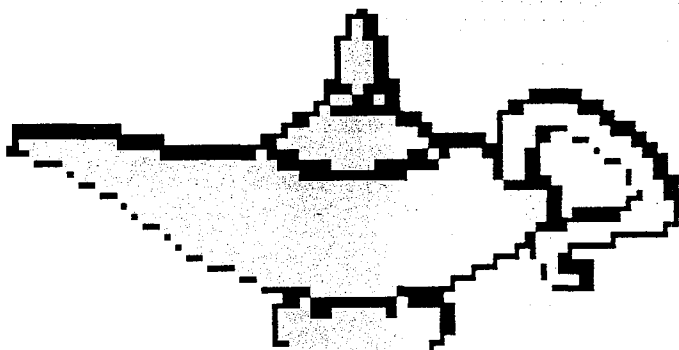
\_\_\_\_\_

\_\_\_\_\_

\_\_\_\_\_

\_\_\_\_\_

NOTES:





**Ark-La-Tex Genealogical Association, Inc.**  
**9 August 1997, Shreveport, Louisiana**

Desmond Walls Allen, PO Box 303, Conway, AR 72033, e-mail: desmond@intellinet.com

## Research in Arkansas

This lecture will suggest a strategy for attacking an Arkansas problem which includes identifying the time period, surveying state-wide sources, attempting to pinpoint the county or counties of residence, and keeping the family with a known group of associates.

The factors which have a large impact on the research are the length of time the family was in Arkansas, the commonness of the surname, and the available resources of the particular counties of interest.

## Bibliography

- Allen, Desmond Walls and Bobbie Jones McLane. *Arkansas Land Patents: County Series*. 57 volumes. Conway, Ark.: Arkansas Research, 1991. [covers land patents (first acquisition of land from the federal government) from earliest settlement through 30 June 1908; divided by current county boundaries]
- Allen, Desmond Walls. *Arkansas' Damned Yankees: An Index to Union Soldiers in Arkansas Regiments*. Conway, Ark.: Arkansas Research, 1987.
- , *Arkansas Death Record Indexes*. Conway, Ark.: Arkansas Research, 1997. (Two volumes are available as of June 1997: 1914-1923 and 1934-1940. The volume covering 1924-1933 will be available in the fall of 1997, and the volume for 1941-1948 will be available in 1998.
- , "Arkansas Donation Lands," *Professional Genealogists of Arkansas, Inc. Newsletter*, Vol. 3, No. 5 (September 1990).
- , *Arkansas' Mexican War Soldiers*. Conway, Ark.: Arkansas Research, 1988.
- , *Arkansas' Spanish American War Soldiers*. Conway, Ark.: Arkansas Research, 1988.
- , *Arkansas Township Digest: Minor Civil Divisions, 1820-1990*. Conway, Ark.: Arkansas Research, 1994.
- , *Arkansas Union Soldiers Pension Application Index*. Conway, Ark.: Arkansas Research, 1987.
- , "Cemeteries in Arkansas," *Professional Genealogists of Arkansas, Inc. Newsletter*, Vol. 5, No. 5 (September 1992). [companion article is "Where to Look First for Arkansas Cemetery Records" in the same issue]
- , *Index to Arkansas Confederate Pension Applications*. Conway, Ark.: Arkansas Research, 1991.
- , *Index to Arkansas Confederate Soldiers*. 3 volumes. Conway, Ark.: Arkansas Research, 1990.
- , "The Land Office Process," *Professional Genealogists of Arkansas Newsletter*, Vol. 5, No. 4 (July 1992). [entire issue is a series of articles about the topic: patents, tract books, land offices]
- , "Sanborn Fire Insurance Maps," *Professional Genealogists of Arkansas Newsletter*, Vol. 5, No. 6 (November 1992). [includes list of Ark. cities and map dates]
- , "Southern Claims Commission Records," *Professional Genealogists of Arkansas Newsletter*, Vol. 4, No. 4 (July 1991). [includes list, by county, of Arkansas claimants]
- , "Which Henry Cook? A Methodology for Searching Confederate Ancestors," *Prologue: Journal of the National Archives*, Fall 1995.
- , "WPA Historical Records Survey: Early Settler Questionnaires," *Professional Genealogists of Arkansas Newsletter*, Vol. 5, No. 6, (November 1992). [includes sample and complete list for Arkansas]
- American State Papers: Documents Legislative and Executive of the Congress of the United States. Public Lands and Claims*. Washington, DC: Gales and Seaton, 1832-1861. [see index by McMullen]
- Anderson, James A. *Centennial History of Arkansas Methodism*. Benton, Ark.: L. W. White Printing Co., 1935.
- Arkansas Geological Commission Land Survey Division. *Handbook for Arkansas Land Surveyors*. 2nd edition. Little Rock: Land Survey Division, 1981. [gives details about early surveys]
- Arkansas Union List of Newspapers*. Fayetteville, Ark.: Univ. of Arkansas Libraries, 1993. [very

difficult to use, but essential for finding newspaper sources]

Arnold, Morris S. and Dorothy Jones Core. *Arkansas Colonials*. Gillett, Ark.: Grand Prairie Historical Society, 1986. [pre-1804 folks]

Arnold, Morris S. *Colonial Arkansas, 1686-1804: A Social and Cultural History*. Fayetteville, Ark.: Univ. of Arkansas Press, 1991. [essential reading for the time period]

Bolton, S. Charles. *Territorial Ambition: Land and Society in Arkansas, 1800-1840*. Fayetteville, Ark.: Univ. of Arkansas Press, 1993.

Bonner, Kathryn Rose. *Arkansas 1860 US Census Index*. Marianna, Ark.: the author, 1987. [use the AIS index, too, for best coverage]

Campbell, Thomas H. *Arkansas Cumberland Presbyterians, 1812-1984: A People of Faith*. Memphis, Tenn.: Arkansas Synod of Cumberland Presbyterian Church, 1985.

Carter, Clarence Edwin. *The Territorial Papers of the United States series, 1934-1962*. Washington, DC: US Government Printing Office, 1953. [See volumes 19, 20, and 21 of Arkansas 1819-1836; for information prior to 1819, see volumes on Missouri and Louisiana]

Chism, Stephen J. *The Arkansas Gazette Obituaries Index, 1819-1879*. Greenville, So.Car.: Southern Historical Press, 1990.

Christ, Mark K. ed. *Rugged and Sublime: The Civil War in Arkansas*. Fayetteville, Ark.: Univ. of Arkansas Press, 1994.

Christensen, Katheren. *Arkansas Military Bounty Grants of 1812*. Hot Springs, Ark.: Arkansas Ancestors, 1971. [not a complete list]

Craig, Marion Stark. *Early Arkansas Residents, 1814-1816*. Conway, Ark.: Arkansas Research, 1992. [originally published 1984]

Dougan, Michael B. *Arkansas Odyssey: The Saga of Arkansas from Prehistoric Times to Present*. Little Rock: Rose Publishing Co., 1994. [massive work; most current available]

-----, *Confederate Arkansas: The People and Politics of a Frontier State in Wartime*. Tuscaloosa, Ala.: The Univ. of Alabama Press, 1976. [makes extensive use of primary sources]

Dugan, Michael B., Tom W. Dillard, and Timothy G. Nutt. *Arkansas History: An Annotated*

*Bibliography*. Westport, Conn.: Greenwood Publishing Company, 1995. [doesn't include genealogical materials, but is very helpful]

Ferguson, John L. *Arkansas and the Civil War*. Little Rock: Pioneer Press, 1965. [an assortment of materials about the war]

Ferguson, John L. and J. H. Atkinson. *Historic Arkansas*. Little Rock: Arkansas History Commission, 1966. [high school text, but very informative for basics]

Goodspeed, Weston Arthur. *The Province and the States: A History of the Province of Louisiana Under France and Spain, and of the Territories and States of the United States Formed Therefrom*. 7 volumes. Madison, Wisc.: The Western Historical Association, 1904. [volume 7 is about Arkansas]

Goodspeed Publishing Company. *Biographical and Historical Memoirs of Central Arkansas*. 1889. Reprint. Easley, So.Car.: Southern Historical Press, 1977. [Jefferson, Saline, Hot Spring, Pulaski, Garland, Lonoke, Perry, Faulkner, and Grant Counties]

-----, *Biographical and Historical Memoirs of Eastern Arkansas*. 1890. Reprint. Easley, So.Car.: Southern Historical Press, 1978. [White, Woodruff, Cross, Crittenden, St. Francis, Monroe, Lee, Arkansas, Prairie, and Phillips Counties]

-----, *Biographical and Historical Memoirs of Northeastern Arkansas*. 1884. Reprint. Easley, So.Car.: Southern Historical Press, 1978. [Greene, Clay, Fulton, Craighead, Randolph, Mississippi, Poinsett, Independence, Sharp, Lawrence, Jackson and Izard Counties]

-----, *Biographical and Historical Memoirs of Northwestern Arkansas*. 1889. Reprint. Easley, So.Car.: Southern Historical Press, 1978. [Benton, Washington, Carroll, Madison, Crawford, Franklin, and Sebastian Counties]

-----, *Biographical and Historical Memoirs of Southern Arkansas*. 1890. Reprint. Easley, So.Car.: Southern Historical Press, 1978. [Clark, Miller, Sevier, Howard, Pike, Lafayette, Hempstead, Columbia, Little River, Nevada, Cleveland, Ouachita, Dallas, Bradley, Calhoun, Union, Ashley, Drew, Lincoln, Desha and Chicot Counties]

-----, *Biographical and Historical Memoirs of Western Arkansas*. 1891. Reprint. Easley, So.Car.: Southern Historical Press, 1978. [Yell, Pope, Johnson, Logan, Scott, Polk, and Montgomery

Counties; Conway County is appended with a separate index at the back of this volume]

-----, *A Reminiscent History of the Ozark Region*. 1894. Reprint. Easley, So. Car.: Southern Historical Press, 1978. [Baxter, Benton, Boone, Carroll, Cleburne, Crawford, Franklin, Fulton, Garland, Hot Spring, Howard, Izard, Johnson, Logan, Madison, Marion, Montgomery, Newton, Pike, Polk, Pope, Scott, Searcy, Sebastian, Sevier, Stone, Van Buren, Washington, and Yell Counties in Arkansas plus 26 southern Missouri counties]

Hallum, John. *Biographical and Pictorial History of Arkansas*. 1887. Reprint. Easley, So. Car.: Southern Historical Press, 1978.

Hempstead, Fay. *A Pictorial History of Arkansas from Earliest Times to 1890*. 1890. Reprint. Easley, So. Car.: Southern Historical Press, 1978.

-----, *Historical Review of Arkansas: Its Commerce, Industry, and Modern Affairs*. 3 volumes. 1911. Reprint. Easley, So. Car.: Southern Historical Press, 1977.

Henderson, Shannon. *Arkansas Gazette Index*, multi-volume series. Russellville, Ark.: Arkansas Tech University, 1976+. [1819-1894; topical—not a name index]

Herndon, Dallas Tabor. *Centennial History of Arkansas*. 3 volumes. 1922. Reprint. Easley, So. Car.: Southern Historical Press, 1977. [volume 1 is one of the best general histories of Arkansas available; see "Roberts" below for the index]

Hinson, E. Glenn. *A History of the Baptists in Arkansas, 1818-1978*. Little Rock, Ark.: Arkansas State Convention, 1979.

Jackson, Ronald Vern. Census indexes for 1840, 1850, 1860, and 1870, under various titles; and pre-1840 tax lists. North Salt Lake City: Accelerated Indexing Systems, 1970+.

Knight, Rena. *Civil War Soldiers Buried in Arkansas' National Cemeteries*. Conway, Ark.: Arkansas Research, 1997. [lists mostly Union soldiers whose burials were consolidated in Little Rock, Fort Smith, and Fayetteville]

LeMaster, Carolyn. *A Corner of the Tapestry: A History of the Jewish Experience in Arkansas, 1820s-1990s*. Fayetteville, Ark.: Univ. of Arkansas Press, 1994.

McDonald, Margaret Simms. *White Already to Harvest: The Episcopal Church in Arkansas, 1838-1971*. Sewanee, Tenn.: University Press, 1975.

McLane, Bobbie Jones and Capitola Glazner. *1850 Mortality Schedules of Arkansas*. Hot Springs, Ark.: Arkansas Ancestors, 1968.

-----, *1860 Mortality Schedules of Arkansas*. Hot Springs, Ark.: Arkansas Ancestors, 1974.

-----, *1870 Mortality Schedules of Arkansas*. Hot Springs, Ark.: Arkansas Ancestors, 1971.

-----, *1880 Mortality Schedules of Arkansas*. Hot Springs, Ark.: Arkansas Ancestors, 1975.

McLane Bobbie and Desmond Walls Allen. *Arkansas 1850 Census Every-name Index*. Conway, Ark.: Arkansas Research, 1995.

-----, *1850 Census of Central Arkansas: Hot Spring, Jefferson, Montgomery, Perry, Prairie, Pulaski, Saline, Scott, and Yell Counties*. Conway, Ark.: Arkansas Research, 1995.

-----, *1850 Census of Eastern Arkansas: Arkansas, Chicot, Crittenden, Desha, Greene, Mississippi, Monroe, Phillips, Poinsett, and St. Francis Counties*. Conway, Ark.: Arkansas Research, 1995.

-----, *1850 Census of North Central Arkansas: Conway, Fulton, Independence, Izard, Jackson, Lawrence, Marion, Randolph, Searcy, Van Buren, and White Counties*. Conway, Ark.: Arkansas Research, 1995.

-----, *1850 Census of Northwest Arkansas: Benton, Carroll, Crawford, Franklin, Johnson, Madison, Newton, Pope, and Washington Counties*. Conway, Ark.: Arkansas Research, 1995.

-----, *1850 Census of Southern Arkansas: Ashley, Bradley, Clark, Dallas, Drew, Hempstead, Lafayette, Ouachita, Pike, Polk, Sevier, and Union Counties*. Conway, Ark.: Arkansas Research, 1995.

McLane, Bobbie Jones and Inez E. Cline. *Arkansas, An Index to the 1840 Census*. Hot Springs, Ark.: Arkansas Ancestors, 1967.

McLane, Bobbie Jones. *Arkansas CSA Soldiers (1911) Census of Confederate Veterans*. 3 volumes. Hot Springs, Ark.: Arkansas Ancestors, 1977-1981. [an every-name index to these three volumes was published in 1988]

-----, *Index to the 1830 Census of Arkansas*. Hot Springs: Arkansas Ancestors, 1965.

McMullen, Phillip. *Grassroots of America: Index to American State Papers, Land Grants and Claims, 1789-1837*. 1972. Reprint. Conway, Ark.: Arkansas Research, 1991.

Moneyhon, Carl H. *The Impact of the Civil War and Reconstruction on Arkansas: Persistence in the Midst of Ruin*. Baton Rouge, La.: Louisiana State University Press, 1994. [excellent coverage of the 1850s, too; important for black researchers]

Morgan, James Logan. *1820 Census of the Territory of Arkansas (Reconstructed)*. 1984. Reprint. Conway, Ark.: Arkansas Research, 1992.

-----, *Arkansas Marriage Notices, 1819-1845*. 1984. Reprint. Conway, Ark.: Arkansas Research, 1992. [from extant issues of 20 early newspapers]

-----, *Arkansas Marriage Records, 1808-1835*. 1984. Reprint. Conway, Ark.: Arkansas Research, 1994. [from extant records]

-----, *Arkansas Newspaper Abstracts, 1819-1845*. 4 volumes. 1981. Reprinted as 1 volume. Conway, Ark.: Arkansas Research, 1992.

-----, *Arkansas Volunteers of 1836-1837*. 1984. Reprint. Conway, Ark.: Arkansas Research, 1992.

Payne, Dorothy. *Arkansas Pensioners, 1818-1900: Records of Some Arkansas Residents Who Applied to the Federal Government for Benefits Arising from Services in Federal Military Organizations (Revolutionary War, War of 1812, Indian and Mexican Wars*. Easley, So. Car.: Southern Historical Press, 1985.

Reaves, Lucy Marion. *Arkansas Families: Glimpses of Yesterday Columns from The Arkansas Gazette*. Conway, Ark.: Arkansas Research, 1995.

Roberts, Lewis E. *The By-name Index to the Centennial History of Arkansas*. Conway, Ark.: Arkansas Research, 1994. [thorough index to all three vols of the Herndon set (see Herndon above)]

Rogers, J. S. *History of Arkansas Baptists*. Little Rock: Arkansas Baptist State Convention, 1948.

Shinn, Josiah H. *Pioneers and Makers of Arkansas*. 1908. Baltimore, Md.: Genealogical Publishing Co., 1967. [social history along with biographical info]

Stevenson, Corinne Cox and Gilberta Wood Westbrooke eds. *Index to Wills and Administrations of Arkansas from the Earliest to 1900*. Jonesboro, Ark.: Vowels Printing Co., 1986. [a bit confusing at times as to sources]

Taunton, Joan Thurman. *Abstracts of Arkansas Reports, January 1837 through January 1861*. Hot Springs, Ark.: Arkansas Genealogical Society, 1988.

Taylor, Orville W. *Negro Slavery in Arkansas*. Durham, No. Car.: Duke University Press, 1958.

Thomas, David Yancey. *Arkansas and Its People: A History, 1541-1930*. 4 volumes. New York: American Historical Society, 1930.

Vernon, Walter N. *Methodism In Arkansas, 1816-1976*. Little Rock, Ark.: Joint Committee for the History of Arkansas Methodism, 1976.

Woods, James M. *Mission and Memory: A History of the Catholic Church in Arkansas*. Little Rock, Ark.: August House, 1993.

### Resource Addresses

Arkansas Ancestors, 222 McMahan Drive, Hot Springs, AR 71913, [request book catalog, SASE please]

Arkansas Department of Health, Division of Vital Records, 4815 West Markham Street, Little Rock, AR 72205

Arkansas Genealogical Society, PO Box 908, Hot Springs, AR 71902, [publishes Arkansas Family Historian quarterly; dues \$15 per calendar year]

Arkansas Highway and Transportation Department Map Sales, Room 203, PO Box 2261, Little Rock, AR 72203, 501/569-2444 [state and county maps, request catalog]

Arkansas Historical Association, Old Main 416 University of Arkansas, Fayetteville, AR 71701 [publishes Arkansas Historical Quarterly; dues \$16 per calendar year]

Arkansas History Commission, One Capitol Mall, Little Rock, AR 72201 [state archives]

Arkansas Research, PO Box 303, Conway, AR 72033, [request free book catalog]  
<http://biz.ipa.net/arkresearch>

Professional Genealogists of Arkansas, Inc. PO Box 1807, Conway, AR 72033, [bi-monthly *Arkansas Historical and Genealogical Magazine* with scholarly articles on Arkansas genealogy; not just for professionals; dues \$12 / 6 issues]

Southern Historical Press, PO Box 1267, Greenville, SC 29602

## Ark-La-Tex Genealogical Association, Inc.

9 August 1997, Shreveport, Louisiana

Desmond Walls Allen, PO Box 303, Conway, AR 72033 desmond@intellinet.com

---

### Map Resources for Genealogists

This lecture offers an introduction to several kinds of maps of potential use by genealogists.

Note: Check your local library for the books listed below. If a book is not available locally, use interlibrary loan. To see if the works are available for purchase, ask your local bookseller to check *Books in Print*. For genealogy-specific or obscure books, a mail order source has been listed. Check library subject card catalogs under "Maps," and browse shelves for related titles.

Allen, Desmond Walls. *Where to Write for County Maps*. Bryant, AR: Research Associates, 1991. [Research Assoc., PO Box 303, Conway, AR 72033; price: \$5.95 postpaid.]

American Geographical Society Map Department. *Index to maps in Books and Periodicals*. Boston: G. K. Hall & Co., 1968. [Photocopy of card file; multi-volume set.]

Andriot, Laurie. *Guide to USGS Geologic and Hydrologic Maps, 1992 edition*. McLean, VA: Documents Index, Inc., 1992. [Documents Index, Inc., PO Box 195, McLean, VA 22101. Covers a variety of USGS maps.]

Clark, David Sanders. *Index to Maps of the American Revolution in Books and Periodicals*. Westport, CT: Greenwood Press, 1974.

Cobb, David A. *Guide to US Map Resources, Second Edition*. Chicago: American Library Association, 1990. [State-by-state listing of archives and libraries with map collections.]

Cumming, William P. *The Southeast in Early Maps with an Annotated Check List of Printed and Manuscript Regional and Local Maps of Southeastern North America During the Colonial Period*. Chapel Hill: University of North Carolina Press, 1958, 1962.

*The Handy Book for Genealogists*, Eighth Edition. Logan, UT: Everton Publishers, 1991. [Everton Publishers, PO Box 368, Logan, UT 84321; price \$31.95 plus \$1.50 postage.]

Hutcheson, Eleanor S., compiler. *United States Atlas 1890 and Complete Post Office Directory*. Fort Worth: n.p., 1989. [Eleanor S. Hutcheson, 3616 Dryden Road, Fort Worth, TX 76109; price \$35.00.]

Jackson, Kenneth T., editor. *Atlas of American History*. New York: Charles Scribners' Sons, 1943, 1978.

Makower, Joel, editor. *The Map Catalog, Third Edition*. New York: Vintage Books, 1992.

Modelski, Andrew M. *Railroad Maps of North America: the First 100 Years*. Washington, DC: Library of Congress, 1984.

Phillips, P. Lee. *A List of Maps of America in the Library of Congress*. New York: Burt Franklin, 1901. [Covers maps in the collection as of 1897.]



Prucha, Francis Paul. *Atlas of American Indian Affairs*. Lincoln: University of Nebraska Press, 1990. [Contains wonderful maps of locations of US military posts.]

Ristow, Walter W. *American Maps and Mapmakers: Commercial Cartography in the Nineteenth Century*. Detroit: Wayne State University Press, 1985.

Rooney, John F., Jr., and others, editors. *This Remarkable Continent: An Atlas of United States and Canadian Society and Cultures*. College Station: Texas A&M University Press, 1982. [Covers a variety of topics of special interest to genealogists.]

Sale, Randall D. and Edwin D. Karn. *American Expansion: A Book of Maps*. Lincoln: University of Nebraska Press, 1962. [Shows settlement patterns for each census year, 1790-1900, and lists US land offices; commentary describes migration patterns.]

Stephenson, Richard W. *Civil War Maps: An Annotated List of Maps and Atlases in the Map Collection of the Library of Congress*. Washington, DC: Government Printing Office, 1961. [Companion volume is *The Hotchkiss Map Collection: A List of Manuscript Maps, Many of the Civil War Period, Prepared by Major Jed. Hotchkiss, and Other Manuscript and Annotated Maps in His Possession*. Washington, DC: Government Printing Office, 1951.]

-----, *Land Ownership Maps: A Checklist of Nineteenth Century United States County Maps in the Library of Congress*. Washington, DC: Government Printing Office, 1967. [Source: libraries.]

*Subject Bibliography: Maps and Atlases*. Washington, DC: Government Printing Office, 1993. [Request from Superintendent of Documents, US Government Printing Office, Washington, DC 20402; price: free. This is a price list for map products available from various government agencies.]

Thompson, Morris M. *Maps for America, Third Edition: Cartographic Products of the US Geological Survey and others*. Washington, DC: Government Printing Office, ca 1987. [US Government Printing Office, Washington, DC 20402; price: \$25.00. Excellent explanations and descriptions of USGS maps.]

Thorndale, William and William Dollarhide. *Map Guide to the US Federal Censuses, 1790-1920*. Baltimore: Genealogical Publishing Co., 1987.

### Resource List

#### USGS

United States Geological Survey, 169 Federal Bldg., 1961 Stout St., Denver, CO 80294

United States Geological Survey, 503 National Center, 12201 Sunrise Valley Drive, Reston, VA 22092

USGS customer phone number is 1-800/872-6277 [1-800/USA-MAPS] (8 am-4 pm, Monday-Friday, Eastern Standard Time). Use this electronic answering system to order topo catalogs and indexes, to find a local map dealer, to order topo maps with a credit card, or ask a question of a human employee. Fax-back service also available.

Request a topographic map index and topographic map catalog (two booklets) for each state of interest by calling the customer phone number or writing the addresses above.

To request a place-name search: write USGS in Reston, VA, attention Branch of Geographic Names, 523 National Center, and ask about a specific place-name.

USGS has a project in progress called "The National Gazetteer of the United States of America." Phase II of the project will add obsolete place names to the list but it isn't complete for all states. Write GNIS Listing, USGS-ESIC, 507 National Center, Reston, VA 22092, to request a list of books, fiche, or printouts available for purchase.

A *commercial* vendor for USGS products and services is Map Express, PO Box 280445, Lakewood, CO 80228; 1/800-627-0039. Write or call and request a catalog.

### **Aerial Photos**

Federal source: US Department of Agriculture, ASCS, PO Box 30010, Salt Lake City, UT 84130.

State sources: write the state's mapping agency and ask for the address of that state's aerial photo division.

### **Soil Maps**

Write US Natural Resources Conservation Service, PO Box 2890, Washington, DC 20013 and ask for a list of state natural resources scientists. From that list, write the State Natural Resources Scientist in the state of interest and request a state soil map and list of county soil surveys currently in print. These are free maps.

Look in the government documents section of depository libraries for copies of soil surveys. Check archives and libraries for old soil maps and soil surveys. For a list of depository libraries, write US Government Printing Office, Washington, DC 20402, and ask for a free copy of *A Directory of US Government Depository Libraries*.

### **National Archives**

To look at just the tip of the iceberg of the holdings in the Cartographic Branch, write National Archives, Cartographic and Architectural Branch, Washington, DC 20408, and ask for a list of maps of the state of your interest from Special List No. 29. (If you see something of interest on the list, photocopy the page, circle the item, and send it back to Cartographics and ask for a price quote.)

*Special List 29: List of Selected Maps of States and Territories* is a free publication available from the National Archives but it is often out-of-print. For assistance in obtaining copies of National Archives finding aids such as Special List 29, contact Scott Genealogical, Route 1, Box 15A, Lovettsville, VA 22080; write with a specific request and enclose a SASE.

### **Commercial Sources**

Jonathan Sheppard Books, PO Box 2020, ESP Station, Albany, NY 12220, sells reprints of a large variety of historical maps. Write for a catalog.

Check ads in *Everton's Genealogical Helper Magazine*.



# Ancestor Problem Resolution Bibliography and Source List

Presented by Desmond Walls Allen, PO Box 303, Conway, AR 72033; e-mail = desmond@intellinet.com

The following items are arranged in the order they are presented in the lecture.

Sources for group sheets that allow source citation:

National Genealogical Society  
4527 17th Street North  
Arlington, VA 22207

Dallas Genealogical Society  
PO Box 12648  
Dallas, TX 75225

Rose, Christine. *Nicknames Past and Present*, the author, 1995. Order from Rose Family Assn., 1474 Montelegre Dr., San Jose, CA 95120, \$6.50 postpaid.

Richard Lackey. *Cite Your Sources: A Manual for Documenting Family Histories and Genealogical Records*. Jackson, MS: University Press of Mississippi, 1980. [This will be replaced by Elizabeth Mills' new book (1997) *Evidence!*.]

Noel C. Stevenson. *Genealogical Evidence: A Guide to the Standard of Proof Relating to Pedigrees, Ancestry, Heirship and Family History*. (revised ed.) Laguna Hills, CA: Aegean Park Press, 1989.

The following references to social and legal history are for example purposes—they represent only a small sample of the titles available.

Daniel J. Boorstin. *The Americans: The Colonial Experience*. New York: Vintage Books, 1958.

-----, *The Americans: The Democratic Experience*. New York: Vintage Books, 1974.

-----, *The Americans: The National Experience*. New York: Vintage Books, 1977.

David Hackett Fischer. *Albion's Seed: Four British Folkways in America*. New York: Oxford University Press, 1989.

Leyburn, James G. *The Scotch-Irish: A Social History*. Chapel Hill: University of North Carolina Press, 1962.

Ramsey, Robert W. *Carolina Cradle: Settlement of the Northwest Carolina Frontier, 1747-1762*. Chapel Hill: University of North Carolina Press, 1964.

Adele Logan Alexander. *Ambiguous Lives: Free Women of Color in Rural Georgia, 1789-1879*. Fayetteville, AR: UA Press, 1991.

William Thorndale and William Dollarhide. *Map Guide to the US Federal Censuses, 1790-1920*. Baltimore, MD: GPC, 1989.

Maps from United States Geographic Survey; 1/800-USA-MAPS

Friedman, Lawrence M. *A History of American Law, Second Ed.* New York: Simon & Schuster, 1985.

Shammas, Carole, et al. *Inheritance in America: From Colonial Times to the Present*. New Brunswick: Rutgers Univ. Press, 1987.

Oberly, James W. *Sixty Million Acres: American Veterans and the Public Lands Before the Civil War*. Kent, OH: Kent State University Press, 1990.

Hibbard, Benjamin Horace. *A History of the Public Land Policies*. Madison: University of Wisconsin Press, 1965 (reprint; originally 1924).

Lainhart, Ann S. *State Census Records*. Baltimore, MD: Genealogical Publishing Co., 1992.

Askew, Thomas A. and Peter W. Spellman. *The Churches and the American Experience: Ideals and Institutions*. Grand Rapids: Baker Book House, 1984.

Levy, Barry. *Quakers and the American Family: British Settlement in the Delaware Valley*. New York: Oxford University Press, 1988.

William Wade Hinshaw. *Encyclopedia of American Quaker Genealogy, Vol. 1, North Carolina*. Baltimore, MD: GPC, 1991.

## Professional Researchers

APG Directory  
Association of Professional Genealogists  
3421 M Street Northwest, Ste. 236  
Washington, DC 20007

Family History Library list of Accredited Genealogists

*Genealogical Helper* ads (use caution)  
Everton Publishers  
PO Box 368, Logan, UT 84321

List from state or local society

## Short, Short Guide to Source Citation

Presented by Desmond Walls Allen, PO Box 303, Conway, AR 72033; e-mail = desmond@intellinet.com

### Books

1. Author(s)
2. Complete Title (including subtitle)
3. Publication Facts
  - Editor
  - Edition
  - Place of Publication
  - Publisher
  - Date of Publication  
(note if reprint)
4. Page number(s)
5. Repository or Collection

### Serials

1. Author(s)
2. Title of Article
3. Name of Periodical
4. Volume Number
5. Month/Season and Year Issued
6. Page Numbers
7. Repository or Collection  
(and form used)

### Newspaper

1. Name of Newspaper
2. Place of Publication
3. Section / Page / Column Numbers
4. Repository or Collection  
(and form used)

### Unpublished Documents

#### Types of Unpublished Sources:

Census Records  
Tax Lists  
Family Bible Records  
Letters  
Civil Vital Records  
Courthouse Records  
Church and Cemetery Records  
State & Federal Land Records  
Military Records  
Oral Interviews

#### Citing Unpublished Documents

1. Descriptive Title of the Document
2. Significant Dates or Numbers
3. Specific Location of the Document
4. Form used / Repository

### Source Citation Examples

#### Census

1850 Federal Census, Population Schedule, Izard County, Arkansas, Blue Mountain Township, page 203, family 68, dwelling 72, National Archives Microfilm M408, Roll 72, Arkansas History Commission.

#### Deed Record

Warranty Deed from John Smith to Adam Davis, 25 July 1890 (recorded 5 August 1890), Faulkner County, Arkansas, Deed Book C, pages 214-218, Faulkner County Courthouse, Circuit Clerk's Office. Certified copy in possession of Sam Smith

#### Oral Interview

Oral Interview with Mamie Adams Smith, 2 May 1975, Pascagoula, Mississippi, by Oscar Davis. Original tape recording and transcript property of Oscar Davis, 123 Main, Little Rock, Arkansas. Transcript used with permission.

### Cite Your Sources SUMMARY

#### Published

Say who wrote it...

Say what it was published in...

Say when it was published and by whom...

Say where you found it...

#### Unpublished

Say what it is...

Say who created the record...

Say when it was created...

Say where you found it...

#### For More Information...

Lackey, Richard S. *Cite Your Sources: A Manual for Documenting Family Histories and Genealogical Records*. Jackson, MS: University Press of MS, 1980.

*Chicago Manual of Style*, Fourteenth Edition. Chicago: University of Chicago Press, 1993.

Mills, Elizabeth Shown. *Evidence! Citation and Analysis for the Family Historian*. Publication information not set, 1997.

# Exchange Periodical Review

*Compiled by Constance Whatley*

Many of the periodicals we receive, in exchange for "*The Genie*" provide up-to-date ideas on how to solve your research challenges. Always search the periodical published in your geographical area of interest, but don't overlook other periodicals that may include articles of general interest to the researcher or about families that have migrated. These periodicals are located at the Shreve Memorial Library - Broadmoor Branch, Genealogy Department, Shreveport, Louisiana.

*The Hoosier Genealogist-Connections*, Volume 46, Issue 3, 2006, published by The Indiana Historical Society, pages 140-142 has an article entitled: "**The African American Legacy in Gibson County, Indiana.**"

*Oregon Genealogical Society Quarterly*, Volume 45, Number 1, Winter 2007, lists on page 8, websites of note. They are:

1. [www.google.com](http://www.google.com)--Google genealogy videos.
2. [www.castlegarden.org](http://www.castlegarden.org)--Castle Garden.
3. [www.familyoldphotos.com](http://www.familyoldphotos.com)--family--Family old photos
4. [bpldb.bplonline.org/db/obituaries](http://bpldb.bplonline.org/db/obituaries)—Obituary index: Birmingham Area Newspapers.

*The Ark Valley Crossroads*, Volume 18, Number 1, January 2007, published by The Wichita Kansas Genealogical Society, page 22, tells how to read old tombstones that are very difficult to read using foil.

*Tracks and Traces*, Volume 28, Number 2, Fall, 2006, published by Union County Genealogical Society, El Dorado, Arkansas, pages 26-38 is the 1850 Slave Schedule for Union County, Arkansas.

*Blue Grass Roots*, Volume 33, Number 3, Fall 2006, page 169 gives readers who use a computer in their research a suggestion on reading documents that are not easily read. It is: *To enlarge print for easier reading on a website or on a document, hold down the control key and turn the small wheel on your mouse. Turn the wheel forward to enlarge print and backward to decrease size.*

*Tennessee Ancestors*, Volume 22, Number 2, August 2006, published by East Tennessee Historical Society, pages 93-115 contains an article and 1860 Slave Schedule, Claiborne County, Tennessee, William G. Payne, Enumerator, June 1, 1860.

*Family Findings*, Volume XXXVIII, Number 4, 2006, pages 172-173, published by West Tennessee Genealogical Society, P. O. Box 3343, Murray Station; Jackson, TN lists "Genealogy Webliography." A total of ten sites are listed including one for Native American Research, one for African American Research and one useful for anyone just starting their research. Others are:

- <http://hometown.aol.com/bbbenge/front.html>
- <http://ccharity.com/>
- <http://www.ipl.org/div/pf/entry/48476>

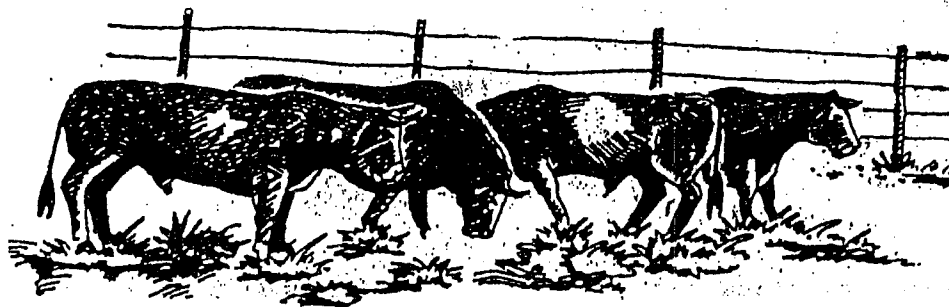
## Genealogist's Disease

*(Texarkana USA Journal, Volume III, Number 2, Fall & Winter 2006, page 59.)*

**WARNING:** Continual complaint as to need for names, dates, and places. Patient has a blank expression, sometimes deaf to spouse and children. Has no taste for work of any kind, except feverishly looking through records and libraries and courthouses. Has compulsion to write letters. Swears at mailman when he doesn't leave mail. Frequents strange places such as cemeteries, ruins, and remote, desolate country area. Makes secret night calls, hides phone bills from spouse and mumbles to self. Has strange, faraway look in eyes.

**TREATMENT:** No known cure. Medication is useless. Disease is not fatal, but gets progressively worse. Patient should attend genealogy workshops, subscribe to genealogical magazines and given quiet corner in house where he or she can be alone.

**REMARKS:** The usual nature of this disease is the sicker the patient gets, the more he or she enjoys it.





## Obituaries & Death Notices

### Obituary of Mrs. Julia Aline McDade

By H. J. Boltz

[*The Bossier Banner; Benton, LA, April 20, 1899*]

Mrs. Julia Aline McDade (nee Platt) was born in Bossier parish, near Fillmore, at the place known as the old home of the Platt family, May 17, 1861, and departed this life at her home, in the town of Haughton, March 1, 1899, aged 37 years, 9 months and 11 days. She began early in life to make all preparation necessary to meet the various duties and obligations of life. She attended school at the following places: Fillmore, Shreveport and Mansfield. She made good use of her opportunities. She spent two terms at Mansfield College, from which place she graduated June 26, 1878. She joined the Methodist church at Haughton under the ministry of the Rev. Lewis A. Reed, who preceded her to the better world. While we are not prepared to give the exact date of her conversion, we can truthfully say that she lived the life of a Christian and proved by her daily walk and consistent life that she was a child of God. It has been the writer's privilege to have the opportunity of being personally acquainted with sister McDade for more than two years, and can say that without exaggeration that she was one among the best of Christians. On Sunday before she was taken sick the following Friday she attended the services of the sanctuary at her church, which was her usual custom when not providentially hindered. Just before the 11 o'clock service began the writer gave an opportunity to any one who wished to speak a word in regard to their Christian experience, that they might consider themselves free to do so. Without any hesitancy sister McDade rose up and testified that she was a child of God and enjoyed the religion of Jesus Christ. While she stood before the audience looking so well and hearty, little did we think that she would never again be permitted to attend the sanctuary of God and testify to the saving power of her Lord.

She was a self-sacrificing Christian. She was always ready to look to the interest and comfort of others. Her dying was like suddenly snatching a sweet-scented flower from our midst – the flower gone but the perfume lingers. Her body is in the grave – her spirit in heaven; but her Christian influence still lingers with us.

She was confined to her bed for nearly three weeks. During that time she suffered a great deal. The writer visited her often and always found her patient and resigned. Never for a moment did she express herself as though the hand of the Lord was too heavy. During her illness she expressed her wishes in regard to her husband's future course, who is not yet a Christian. May the Lord sanctify this sore bereavement to the good of the husband and to the glory of his name.

She was married to Mr. W. T. McDade April 26, 1881. This union was blessed with seven children – six of whom survive to mourn their loss [Edna, Alford, Dick, Jim, Lawrence and Loge?]. A faithful mother, she trained her children well. A confiding, faithful wife, she made home happy. May the God of all goodness sustain the bereaved ones, and help them to meet her in heaven, where there will be no more sad partings; no sickness; sorrow nor death.

**The Sad Death of Mr. Richard Taylor  
At Wild Lucia Yesterday.**  
*Shreveport Times, Friday, June 20 [1898]*

About 3 o'clock yesterday morning death, like an unwelcome visitor, entered the little town of Wild Lucia and forever stilled the voice of Mr. Richard Taylor, one of its most enterprising and beloved young business men. He had been sick for some time with swamp fever, which neither love, care nor medical skills could successfully combat. He had been very low for some time and two or three days ago all hope was abandoned that he would recover.

Mr. Taylor formerly lived in this city, having been employed by Mr. Sam Benjamin as collector. He made many friends here and by his integrity and honest dealing won the admiration and confidence of the business public. He went from this place to Wild Lucia, and with Mr. W. A. Abney as his partner set as business, general merchandising, for himself. He rapidly made friends there and was securing for himself and little family a nice competence when stricken by the remorseless hand of disease.

Mr. Taylor was born and raised in Homer and is connected with the best families in that region. He leaves a wife and two children, which have the heartfelt sympathy of all in their great bereavement.

The remains were brought here yesterday and embalmed by Undertaker Waring, and will be sent to Homer for interment this morning. Deceased was about 32 years of age and his sad death is the cause of much regret and sorrow.

**Obituary of Mrs. Ann Scott Beard**  
*Shreveport Times, Tuesday, April 24 1900, page 8*

Mrs. Ann Scott Beard was born in Selma, Ala., April 15<sup>th</sup>, 1845 and died Tuesday, April 19<sup>th</sup>, 1900. It has been the writer's happy privilege to have known this sweet Christian character for many years, and to know her was to love her. Hers was a noble and truly unselfish nature. Friends and neighbors found in her an ever ready sympathizer, an ever wise councilor. She will be sadly missed by a large circle of friends and relatives, but to none can the blow come so heavily as to her three children, who are indeed sorely bereaved. Yes dear ones, we realize that no one can ever take "mamma's" place, but your loss is her gain, and you must find comfort in the thought that you have made her life so happy. A fonder mother, or more devoted children we have never known. You have never caused a shadow to darken her peaceful life, and now you must take up the burden again, press steadily and patiently onward, with that strong magnet drawing you upward. Surely your faith can never waver. She is safe in the arms of a loving Savior. All pain is gone, and you must be ready to meet her on the other shore, where she awaits you with beckoning hands.

## Obituary of Pascal C. Husbrook

*The Bossier Banner, Thursday, May 11, 1899*

Pascal C. Husbrook died at his home in Houghton, May 2, 1899 of softening of the brain. He was born in Tennessee in 1843, hence was 56 years old.

About three years ago he became obedient to the Lord, and was baptized into the Church of Christ by Elder Morrow, of Timpson, Texas.

He was buried at the Fillmore burying grounds, Elder Weaver, of Texas, conducting the funeral services in an impressive manner in the presence of a large crowd, who attested their high regard for the deceased.

He leaves a lonely wife to battle with the stern realities of life.

May the Lord sanctify this sad bereavement to the good of the lone widow, and may she press on in humble submission to the will of Him who doeth all things well, that she may be permitted to meet with her loved companion in that world where sorrow never comes.

## Obituary of John C. Pilkinton

*The Bossier Banner, Thursday, May 11, 1899*

John C. Pilkinton, son of Mr. and Mrs. R. E. Pilkington, died of swamp fever at their home, near Linton, April 27, aged 12 years, 5 months and 15 days. He was yet a young and loving child, loved by all who knew him. He was taken while young, but the Father knew best. Grieve not, mother, for thy child is at rest in the glories of Heaven, and is watching and waiting for thee. We hope to meet him in Heaven, where death will part us no more. He is gone from our circle of friends, and has left a vacant place, which no other can fill. [His School Mate]

## Death of Samuel G. Thompson

*The Bossier Banner, Thursday, May 4, 1899*

Mr. Samuel G. Thompson, son of James B. and Mary E. Thompson, died at his home at Roswell, Caddo parish, on April 26, 1899, age 29 years, 1 month and 16 days.

Mr. Thompson was born in Drew County, Ark., March 9, 1870, but had been a citizen of Bossier from childhood. January 15, 1896, he was married to Miss Mamie E. Doles, and few years ago moved to Roswell, where he was engaged in the mercantile business when he died. He was a man highly esteemed by his many warm friends and admirers; of upright character, with a gentle and lovable nature, always kind, cheerful, and considerate towards everyone.

Despite the unremitting efforts of medical skill, the most faithful and tender nursing and sleepless vigilance of loving hearts and ministering hands, that invisible link that binds mortality with immortality was snapped asunder, and the devoted husband, son and brother, yielded to the last fateful summons of the Master "who doeth all things well." Thus upon the very threshold of life so full of promise, in the bright dawn of maturing and hopeful manhood, he was called home to meet his God.

His remains were buried at Cottage Grove last Thursday afternoon, Rev. Mr. Zeigle conducting the burial service. A large concourse of friends followed his remains to their last resting place.



# Ancestor Chart

Name of Compiler R.L.Owens, SR.  
 Address 846 East River Road  
 City, State Shreveport, LA 71105  
 Date 1 September 1994

Person No. 1 on this chart is the same  
 person as No. \_\_\_\_\_ on chart No. \_\_\_\_\_.

Chart No. 1

b. Date of Birth  
 p.b. Place of Birth  
 m. Date of Marriage  
 d. Date of Death  
 p.d. Place of Death

4 Raymon LaFayette Owens, Sr.

(Father of No. 2)

b. 14 Jan. 1924  
 p.b. Castor (Bienville) LA  
 m. 21 Aug. 1943 (Shreveport)  
 d.  
 p.d.

2 Raymon LaFayette Owens, Jr.

(Father of No. 1)

b. 9 Aug. 1949  
 p.b. Shreveport (Caddo) LA  
 m. 26 Nov. 1975 (Shreveport, LA)  
 d.  
 p.d.

5 Ree Louise (Peggy) Wilkes

(Mother of No. 2)

b. 1 Feb. 1925  
 p.b. Shreveport, LA  
 d.  
 p.d.

1 DANIEL WARD OWENS

b. 27 Oct. 1976  
 p.b. Baton Rouge, LA  
 m.  
 d.  
 p.d.

6 Richard Elmer Ward, Jr.

(Father of No. 3)

b. 9 Oct. 1911  
 p.b.  
 m.  
 d. 7 Jan. 1980  
 p.d. Louisville, KY  
 int. Soperton, GA

3 Sandra Eve Ward Baker

(Mother of No. 1)

b.  
 p.b.  
 d.  
 p.d.

7 June Emily Tidwell

(Mother of No. 3)

b. 6 Nov. 1920  
 p.b.  
 d.  
 p.d.

(Spouse of No. 1)

b. d.  
 p.b. p.d.

8 Mariyn Lee Owens, Sr.

(Father of No. 4)

b. 13 Oct. 1898  
 p.b. Winston County, ALA  
 m. 11 Nov. 1920 Sibley, LA  
 d. 16 Nov. 1984  
 p.d. Shreveport (Caddo) LA

9 Susie Estelle Chandler

(Mother of No. 4)

b. 27 July 1902  
 p.b. Victoria (Saline) LA  
 d. 10 Aug. 1980  
 p.d. Shreveport (Caddo) LA

10 Don Carl Wilkes

(Father of No. 5)

b. 19 Mar. 1902  
 p.b.  
 m.  
 d. 3 July 1979  
 p.d. Shreveport (Caddo) LA

11 Anna Louise Kemp

(Mother of No. 5)

b. 12 Oct. 1901  
 p.b.  
 d. 27 Nov. 1987  
 p.d. Shreveport, LA

12 Richard Elmer Ward, Sr.

(Father of No. 6)

b. 15 May 1881  
 p.b. Elbert County, GA  
 m.  
 d. 2 July 1958  
 p.d. Soperton, GA

13 Ina Lee Smith

(Mother of No. 6)

b. 25 Oct. 1887  
 p.b.  
 d. 3 Nov. 1967  
 p.d. Soperton, GA

14 Robert Ellis Tidwell

(Father of No. 7)

b. 9 Mar. 1901  
 p.b.  
 m.  
 d. 22 Dec. 1981  
 p.d. Sanderson, GA (Hillcrest Cem.)  
 Hattie Holland Prosser

15

(Mother of No. 7)

b. 15 Sept. 1897  
 p.b.  
 d. 6 Mar. 1979  
 p.d. Sanderson, GA  
 int. Hillcrest Cem.

16 William Thomas Owens

(Father of No. 8, 4)

b. 4 Nov. 1867

m.

d. 6 July 1934

17 Mamie Edith Fields

(Mother of No. 8, 5)

b. 26 Dec. 1871

d. 8 Sept. 1951

18 Isaac Collins Chandler

(Father of No. 9, 6)

b. 5 Aug. 1872

m. 1894

d. 6 Sept. 1957 Shreveport, LA

19 Mary Elizabeth Morgan

(Mother of No. 9, 7)

b. 26 Feb. 1876

d. 17 Jan. 1940

20 John Alexander Wilkes

(Father of No. 10, 2)

b.

m.

d.

21 Vashti Fetzer

(Mother of No. 10, 3)

b.

d.

22 John LaVelle Kemp

(Father of No. 11, 1)

b. 30 Oct. 1859

m.

d. 20 Nov. 1948 Shreveport, LA

23 Margaret Melissa Faris

(Mother of No. 11, 2)

b. 187

d. 1933 Shreveport, LA

24 George Marion Ward

(Father of No. 12, 2)

b. 1 Oct. 1824

m.

d. 17 Mar. 1907

25 Elizabeth McMullen

(Mother of No. 12, 3)

b. 15 Sept. 1844

d. 4 Aug. 1910

26 David Jordan Smith

(Father of No. 13, 1)

b. 9 June 1853

m.

d. 6 Nov. 1928

27 Mary Durden

(Mother of No. 13, 2)

b. 6 Jun 1858

d. 2 Feb. 1951

28 Alonza A. Tidwell

(Father of No. 14, 1)

b.

m.

d.

29 Elizabeth

(Mother of No. 14, 2)

b.

d.

30 Elisha Prosser

(Father of No. 15, 1)

b.

m.

d.

31 Melissa Veal

(Mother of No. 15, 2)

b.

d. Sanderson, GA

# Ancestor Chart

Name of Compiler \_\_\_\_\_  
 Address \_\_\_\_\_  
 City, State \_\_\_\_\_  
 Date \_\_\_\_\_

Person No. 1 on this chart is the same  
 person as No. 24 on chart No. 1.

Chart No. 2

b. Date of Birth  
 p.b. Place of Birth  
 m. Date of Marriage  
 d. Date of Death  
 p.d. Place of Death

4 Jacob Ward

(Father of No. 2)

b. 1730  
 p.b. Spatsylvania County VA

m. 1750 Culpepper Cnty VA

d. 1781

p.d. Culpepper County, VA

2 William Ward

(Father of No. 1)

b. 8 Dec. 1759

p.b. Culpepper County

m. 19 Dec. 1792

p.d.

5 Anna Hill

(Mother of No. 2)

b. 25 July 1730

p.b. Middlesex County VA

d.

p.d.

1 George Marion Ward

b. 1 Oct. 1824

p.b.

m.

d. 17 Mar. 1907

p.d.

6

(Father of No. 3)

b.

p.b.

m.

d.

p.d.

3 (2nd.) Elizabeth McMullen

(Mother of No. 1)

b. 15 Sept. 1844

p.b.

d. 4 Aug. 1910

p.d.

int. Elbert County, GA

7

(Mother of No. 3)

b.

p.b.

d.

p.d.

(Spouse of No. 1)

b.

p.b.

d.

p.d.

8

(Father of No. 4)

b.

p.b.

m.

d.

p.d.

9

(Mother of No. 4)

b.

p.b.

d.

p.d.

10 William Hill

(Father of No. 5)

b.

p.b.

m.

d.

p.d.

11 Frances Needles

(Mother of No. 5)

b.

p.b.

d.

p.d.

12

(Father of No. 6)

b.

p.b.

m.

d.

p.d.

13

(Mother of No. 6)

b.

p.b.

d.

p.d.

14

(Father of No. 7)

b.

p.b.

m.

d.

p.d.

15

(Mother of No. 7)

b.

p.b.

d.

p.d.

16

b.

m.

d.

17

b.

d.

18

b.

m.

d.

19

b.

d.

20

b.

m.

d.

21

b.

d.

22

b.

m.

d.

23

b.

d.

24

b.

m.

d.

25

b.

d.

26

b.

m.

d.

27

b.

d.

28

b.

m.

d.

29

b.

d.

30

b.

m.

d.

31

b.

d.

(Father of No. 8,  
 Cont. on chart No. \_\_\_\_\_)

(Mother of No. 8,  
 Cont. on chart No. \_\_\_\_\_)

(Father of No. 9,  
 Cont. on chart No. \_\_\_\_\_)

(Mother of No. 9,  
 Cont. on chart No. \_\_\_\_\_)

(Father of No. 10,  
 Cont. on chart No. \_\_\_\_\_)

(Mother of No. 10,  
 Cont. on chart No. \_\_\_\_\_)

(Father of No. 11,  
 Cont. on chart No. \_\_\_\_\_)

(Mother of No. 11,  
 Cont. on chart No. \_\_\_\_\_)

(Father of No. 12,  
 Cont. on chart No. \_\_\_\_\_)

(Mother of No. 12,  
 Cont. on chart No. \_\_\_\_\_)

(Father of No. 13,  
 Cont. on chart No. \_\_\_\_\_)

(Mother of No. 13,  
 Cont. on chart No. \_\_\_\_\_)

(Father of No. 14,  
 Cont. on chart No. \_\_\_\_\_)

(Mother of No. 14,  
 Cont. on chart No. \_\_\_\_\_)

(Father of No. 15,  
 Cont. on chart No. \_\_\_\_\_)

(Mother of No. 15,  
 Cont. on chart No. \_\_\_\_\_)

# Ancestor Chart

Name of Compiler \_\_\_\_\_  
 Address \_\_\_\_\_  
 City, State \_\_\_\_\_  
 Date \_\_\_\_\_

Person No. 1 on this chart is the same person as No. 27 on chart No. 1.

Chart No. 3

b. Date of Birth  
 p.b. Place of Birth  
 m. Date of Marriage  
 d. Date of Death  
 p.d. Place of Death

4 William Durden  
 (Father of No. 2)  
 b. \_\_\_\_\_  
 p.b. \_\_\_\_\_  
 m. \_\_\_\_\_  
 d. \_\_\_\_\_  
 p.d. \_\_\_\_\_

2 Norris Nathan Durden  
 (Father of No. 1)

b. 11 May 1838  
 p.b. \_\_\_\_\_  
 m. \_\_\_\_\_  
 d. 4 Mar. 1933  
 p.d. \_\_\_\_\_

5 Elizabeth Barwick  
 (Mother of No. 2)  
 b. 1817  
 p.b. \_\_\_\_\_  
 d. 1889  
 p.d. Emanuel County, GA

1 Mary Durden

b. 7 June 1858  
 p.b. \_\_\_\_\_  
 m. \_\_\_\_\_  
 d. 2 Feb. 1951  
 p.d. \_\_\_\_\_

6 Burrell Key  
 (Father of No. 3)  
 b. 12 Feb. 1810  
 p.b. \_\_\_\_\_  
 m. \_\_\_\_\_  
 d. 22 Oct. 1884  
 p.d. Adrian, GA

3 Melinda Kea  
 (Mother of No. 1)

b. 10 Mar. 1858  
 p.b. \_\_\_\_\_  
 d. 25 Feb. 1920  
 p.d. \_\_\_\_\_

7 Elizabeth Tapley  
 (Mother of No. 3)  
 b. 25 May 1813  
 p.b. \_\_\_\_\_  
 d. 14 Jan. 1891  
 p.d. \_\_\_\_\_

(Spouse of No. 1)

b. \_\_\_\_\_ d. \_\_\_\_\_  
 p.b. \_\_\_\_\_ p.d. \_\_\_\_\_

8 \_\_\_\_\_  
 (Father of No. 4)  
 b. \_\_\_\_\_  
 p.b. \_\_\_\_\_  
 m. \_\_\_\_\_  
 d. \_\_\_\_\_  
 p.d. \_\_\_\_\_

9 \_\_\_\_\_  
 (Mother of No. 4)  
 b. \_\_\_\_\_  
 p.b. \_\_\_\_\_  
 d. \_\_\_\_\_  
 p.d. \_\_\_\_\_

10 Nathan Barwick

(Father of No. 5)  
 b. \_\_\_\_\_  
 p.b. \_\_\_\_\_  
 m. \_\_\_\_\_  
 d. \_\_\_\_\_  
 p.d. \_\_\_\_\_

11 Elizabeth Whitten

(Mother of No. 5)  
 b. \_\_\_\_\_  
 p.b. \_\_\_\_\_  
 d. \_\_\_\_\_  
 p.d. \_\_\_\_\_

12 Warren Kea

(Father of No. 6)  
 b. 1784  
 p.b. \_\_\_\_\_  
 m. \_\_\_\_\_  
 d. 1836  
 p.d. \_\_\_\_\_

13 Polly Bensley

(Mother of No. 6)  
 b. \_\_\_\_\_  
 p.b. \_\_\_\_\_  
 d. \_\_\_\_\_  
 p.d. \_\_\_\_\_

14 \_\_\_\_\_

(Father of No. 7)  
 b. \_\_\_\_\_  
 p.b. \_\_\_\_\_  
 m. \_\_\_\_\_  
 d. \_\_\_\_\_  
 p.d. \_\_\_\_\_

15 \_\_\_\_\_

(Mother of No. 7)  
 b. \_\_\_\_\_  
 p.b. \_\_\_\_\_  
 d. \_\_\_\_\_  
 p.d. \_\_\_\_\_

16 \_\_\_\_\_  
 (Father of No. 8,  
 Cont. on chart No. \_\_\_\_\_)

17 \_\_\_\_\_  
 (Mother of No. 8,  
 Cont. on chart No. \_\_\_\_\_)

18 \_\_\_\_\_  
 (Father of No. 9,  
 Cont. on chart No. \_\_\_\_\_)

19 \_\_\_\_\_  
 (Mother of No. 9,  
 Cont. on chart No. \_\_\_\_\_)

20 \_\_\_\_\_  
 (Father of No. 10,  
 Cont. on chart No. \_\_\_\_\_)

21 \_\_\_\_\_  
 (Mother of No. 10,  
 Cont. on chart No. \_\_\_\_\_)

22 \_\_\_\_\_  
 (Father of No. 11,  
 Cont. on chart No. \_\_\_\_\_)

23 \_\_\_\_\_  
 (Mother of No. 11,  
 Cont. on chart No. \_\_\_\_\_)

24 \_\_\_\_\_  
 (Father of No. 12,  
 Cont. on chart No. \_\_\_\_\_)

25 \_\_\_\_\_  
 (Mother of No. 12,  
 Cont. on chart No. \_\_\_\_\_)

26 \_\_\_\_\_  
 (Father of No. 13,  
 Cont. on chart No. \_\_\_\_\_)

27 \_\_\_\_\_  
 (Mother of No. 13,  
 Cont. on chart No. \_\_\_\_\_)

28 \_\_\_\_\_  
 (Father of No. 14,  
 Cont. on chart No. \_\_\_\_\_)

29 \_\_\_\_\_  
 (Mother of No. 14,  
 Cont. on chart No. \_\_\_\_\_)

30 \_\_\_\_\_  
 (Father of No. 15,  
 Cont. on chart No. \_\_\_\_\_)

31 \_\_\_\_\_  
 (Mother of No. 15,  
 Cont. on chart No. \_\_\_\_\_)

Form A2 Copyright 1983 by The Everton Publishers, Inc., P.O. Box 368, Logan, Utah, publishers of THE GENEOLOGICAL HELPER. Send for a free catalogue with lists and full descriptions of many genealogical aids.

# Ancestor Chart

Chart No. 4

Name of Compiler \_\_\_\_\_

Person No. 1 on this chart is the same person as No. 16 on chart No. 1.

Address \_\_\_\_\_

City, State \_\_\_\_\_

Date \_\_\_\_\_

b. Date of Birth  
p.b. Place of Birth  
m. Date of Marriage  
d. Date of Death  
p.d. Place of Death

4 James Madison Owens

(Father of No. 2)

b. 1813  
p.b. N.C.  
m.  
d.  
p.d.

2 Albert LaFayette Owens

(Father of No. 1)

b. 17 June 1846  
p.b.  
m.  
d. 12 Sep. 1924  
p.d. Lexington (Lauderdale) ALA

5 Eliza B.

(Mother of No. 2)

b. 1813  
p.b. GA  
d.  
p.d.

1 William Thomas Owens

b. 4 Nov. 1867 OR 68

p.b.

m.

d. 6 July 1934

p.d. Minden (Webster) LA

int. Brushwood Meth. Cem. Dubberly, LA

6

(Father of No. 3)

b.  
p.b.  
m.  
d.  
p.d.

3 Frances Nunnally

(Mother of No. 1)

b. 1848  
p.b.  
d. 1904  
p.d.  
int. Dbl. Springs (Winston Cnty) ALA

7

(Mother of No. 3)

b.  
p.b.  
d.  
p.d.

(Spouse of No. 1)

b. d.  
p.b. p.d.

8

(Father of No. 4)

b.  
p.b.  
m.  
d.  
p.d.

1970's  
VA.

9

(Mother of No. 4)

b.  
p.b.  
d.  
p.d.

10

(Father of No. 5)

b.  
p.b.  
m.  
d.  
p.d.

11

(Mother of No. 5)

b.  
p.b.  
d.  
p.d.

12

(Father of No. 6)

b.  
p.b.  
m.  
d.  
p.d.

13

(Mother of No. 6)

b.  
p.b.  
d.  
p.d.

14

(Father of No. 7)

b.  
p.b.  
m.  
d.  
p.d.

15

(Mother of No. 7)

b.  
p.b.  
d.  
p.d.

16

b.

(Father of No. 8,  
Cont. on chart No. \_\_\_\_\_)

m.

d.

17

b.

(Mother of No. 8,  
Cont. on chart No. \_\_\_\_\_)

d.

18

b.

(Father of No. 9,  
Cont. on chart No. \_\_\_\_\_)

m.

d.

19

b.

(Mother of No. 9,  
Cont. on chart No. \_\_\_\_\_)

d.

20

b.

(Father of No. 10,  
Cont. on chart No. \_\_\_\_\_)

m.

d.

21

b.

(Mother of No. 10,  
Cont. on chart No. \_\_\_\_\_)

d.

22

b.

(Father of No. 11,  
Cont. on chart No. \_\_\_\_\_)

m.

d.

23

b.

(Mother of No. 11,  
Cont. on chart No. \_\_\_\_\_)

d.

24

b.

(Father of No. 12,  
Cont. on chart No. \_\_\_\_\_)

m.

d.

25

b.

(Mother of No. 12,  
Cont. on chart No. \_\_\_\_\_)

d.

26

b.

(Father of No. 13,  
Cont. on chart No. \_\_\_\_\_)

m.

d.

27

b.

(Mother of No. 13,  
Cont. on chart No. \_\_\_\_\_)

d.

28

b.

(Father of No. 14,  
Cont. on chart No. \_\_\_\_\_)

m.

d.

29

b.

(Mother of No. 14,  
Cont. on chart No. \_\_\_\_\_)

d.

30

b.

(Father of No. 15,  
Cont. on chart No. \_\_\_\_\_)

m.

d.

31

b.

(Mother of No. 15,  
Cont. on chart No. \_\_\_\_\_)

d.

Form A2 Copyright 1983 by The Everton Publishers, Inc., P.O. Box 368, Logan, Utah, Publishers of THE GENEALOGICAL HELPER. Send for a free catalogue with lists and full descriptions of many genealogical aids.

# QUERIES

By Isabelle Woods

BROWN  
DOUGLAS  
REED

Seek data (birth, marriage, divorce, death, etc.,) relating to the African American descendants of Robert REED and his wife, Ida DOUGLAS, residents of Madison Parish, LA, all of their lives. James DOUGLAS (b. ca 1852, LA) married Jane \_\_ (b. ca 1885, LA; d 28 May 1931, Madison Parish, LA) and three children--George (b. ca 1878, LA), Ida (b. 1885, LA; d. 28 May 1931, Madison Parish, LA), and Lavinia DOUGLAS (b. ca 1888, LA)--were born to this union. About 1902, Ida DOUGLAS married Robert REED. Robert's parents, Vacey \_\_ (b. ca 1855, LA) and Jerry REED (b. ca 1835 in VA or LA) had four sons--Robert (b. ca 1875, LA; d 17 Aug 1947, Madison Parish, LA), Isaac (b. 1877, LA), Anthony (b. 1879, LA), and David REED (b. ca Jan 1889). Ida and Robert REED had 14 children, all born in Louisiana: Willie REED (b. 1 Jan 1903, d. 22 Nov 1973), Grace (b. 4 Oct 1907, d. 7 Jan 2000), Robert, Jr., (b. 27 Apr 1909, d. 28 Feb 1991), Louise (b. 1911, d. 1948), David Curtis (b. 10 Mar 1913, d. 6 Apr 1982), Pearline (ca. 1916); Cornelius (b. ca 1918), Mary D. (b. ca 1920), Estella (b. 9 Mar 1923, d. 14 Feb 1996), Andrew, James, Rosa, D. C., and Robert "Jungie" REED. Robert and Ida had probably divorced. By 1930 both reside in Madison Parish, LA, where Robert's wife is "Mary" and Ida is in the household of Melendy and Willie Jones. Thus, information on the descendants of this second family of Mary\_\_ and Robert REED will also be appreciated. On 16 Nov 1942, Robert REED received a permit to build a house on McCall Street in Tallulah, Madison Parish, LA. Contact Stacey and Vickey BROWN by telephone: (901) 212-6567 or E-mail: [stbrown68@yahoo.com](mailto:stbrown68@yahoo.com) or [vybrown17@hotmail.com](mailto:vybrown17@hotmail.com).

COTTRELL  
CRAIN  
CURRY  
HART  
MADDUX

Desire verification that John HART and Angelina CURRY are the parents of Letha A. HART whose death certificate shows "Father: HART," and "Mother: CURRY." Letha (b. 19 Aug 1843, MS; d. 22 May 1927, El Paso, TX) married 1<sup>st</sup> William CRAIN at Shreveport, Caddo Parish, LA, on 29 Feb 1872; and to 2<sup>nd</sup> Thomas MADDUX. Letha is listed in 1860 Bossier Parish, LA, with J. G. HART "living with brother;" in 1870 Claiborne Parish, LA, with Peter CURRY and family; in 1880 Caddo Parish, LA, with husband, Thomas MADDUX, and children; in 1900 and 1910 Caddo Parish, LA, with her children. Contact: Gale COTTRELL, 5A Margaret Drive, Stafford Springs, NY 06076-1659; Telephone: (860) 684-1472; or E-mail: [TCOTTR9698@aol.com](mailto:TCOTTR9698@aol.com).

# QUERIES

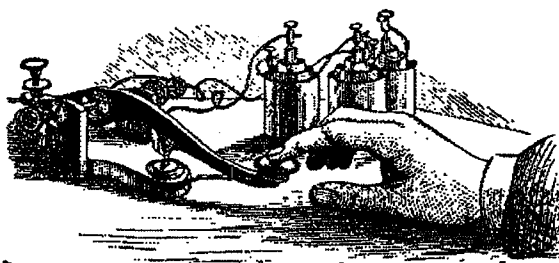
By Isabelle Woods

COTTRELL  
CRAIN  
HART  
MADDOX  
MADDUX

Need place and date of death for Thomas M. MADDOX or MADDOX (b. ca 1842, Stewart Co., TN; d. ca. 1882-1890), who married Letha A. HART CRAIN on 5 Jan 1875 in Shreveport, LA. Thomas MADDOX is listed on an 1880 Census in Shreveport, Caddo Parish, Louisiana with wife, Letha (b. 19 Aug 1843, MS; d. 22 May 1927, El Paso, TX), and children—Rhoda Annie (b. 1878), John Thomas (b. 1880), and Joseph Marmaduke MADDOX (b. 27 Oct 1882). Letha is listed as a “widow of Soldier, US” on an 1890 Bossier City, Bossier Parish, LA, *Special Census of Surviving Soldiers, Sailors, and Marines, Widows, etc.* Contact: Gale COTTRELL, 5A Margaret Drive, Stafford Springs, NY 06076-1659; Telephone: (860) 684-1472; or E-mail: [TCOTTR9698@aol.com](mailto:TCOTTR9698@aol.com).

ATTAWAY  
BICKHAM  
BROWN  
CLAY  
ERWIN  
GARSEE  
HENDERSON  
SANSOM

Seek any information on the surnames of SANSOM and ERWIN. Researching Sarah Frances SANSOM, probably the daughter of Nathan SANSOM (b. 1815, Dallas Co., AL; d. ca 1850, Clarke Co. or Jasper Co., MS) and Jane \_\_\_\_, (b. 1825, SC; said to have been Indian, probably Choctaw). Nathan was the son of Delphia CLAY and William SANSOM. Nathan and Jane had six daughters: A. B. (b. 1842, AL); Elizabeth (b. 17 Apr 1845; d. 26 Nov 1927, LA; buried at the Blanchard Cemetery, Blanchard, Caddo Parish, LA; married J. W. ATTAWAY, b. 1843); Sarah Frances (b. 1 Mar 1847, AL; d. 7 Mar 1896, Blanchard, LA); P. A. (b. 1848); Harriet (b. 1850, married Joseph BROWN, b. 1853, VA); and Henrietta (b. 1859, LA). On 23 Aug 1869, Sarah married James Vernon ERWIN (b. 4 Apr 1846; d. 2 Aug 1915, Blanchard, LA). James was the son of Elizabeth T. BICKHAM (b. 1817, St. Tammany Parish, LA; d. Mar 1880, Red Chute, Bossier Parish, LA) and William HENDERSON ERWIN (b. 1815, St. Tammany Parish, LA; d. 1866, Blanchard, LA). Please e-mail. Will gladly share my data. Write Billie GARSEE, 9073 Billie Ridge Drive, Shreveport, LA 71118-2611; or E-mail: [bbgarsee@cs.com](mailto:bbgarsee@cs.com).



# **The 40-Year Search for Nathaniel Ezra Milton Kidd (1858-1933)**

**By Raymond C. Kidd**

I first learned of my great grandfather, Nathaniel Ezra Milton Kidd, in 1966 during a visit to my grandmother's home in Hendersonville, North Carolina. Although she and I had been trading letters and telephone calls on occasion over the years, we had never had a truly detailed discussion until then. Her husband (and my grandfather) had died a couple of years prior. Now she had no family near and my visit from Maryland was a special event. In answer to my questions, she provided me with copies of family history pages from an old family bible, which she said her son (and my uncle) possessed. My uncle had already passed away, though, and now she didn't know where it was. My father knew nothing about either his grandfather – who had died shortly after he was born – any family bible. There was no one else to ask. That visit to my grandmother began a 40-year odyssey to find my great grandfather.

Often, the most reliable way to learn the truth about most things is to physically touch them. This was not possible with my great grandfather, though, because no one could find his grave or even provide its precise location. The notes from the family bible – probably written by my uncle – narrowed the probabilities down to the “Rockport Cemetery,” which, I later learned through a USGenWeb Project web site, was near Lima, Ohio. It seemed to make sense because there were several other family members listed on the USGenWeb Project web site as buried in this cemetery, but not Nathaniel Ezra Milton Kidd. I discovered a fellow on the Internet who lived in that area and knew where the cemetery was. He agreed to drive to the cemetery and photograph the family headstones for far less than the cost of an airplane ticket. This he did, photographing several family markers, but not Milton Kidd's. He could not find it. Equally disconcerting, I had no idea at all where his wife – and my great grandmother – Lydia Mariah Jennings was buried. Even the family bible notes were unhelpful.

Inquiries to funeral homes in two separate towns and to the cemetery trustees had, ultimately, proved equally barren. Vowing to find this grave site and solve this mystery or bust, I recently made the trip myself. With some effort, I located the cemetery. Yet, in two thorough walks through the entire cemetery, I, too, failed to locate the grave. I called on the little church nearby and identified the county trustee for the cemetery. He had no plot map, nor did he know much else. He did provide the names of two funeral homes that might have information. They didn't.

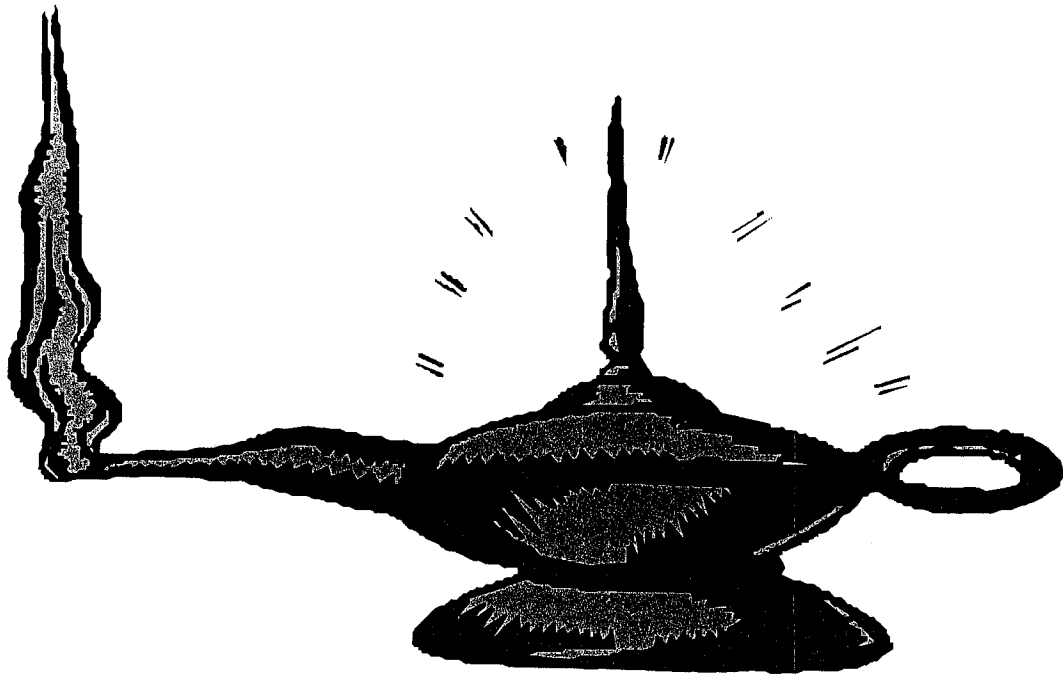
Now Allen County, Ohio, takes great pride in its long history. They even sponsor their own museum, The Allen County Historical Society and Museum, and provide a “curator of archives and manuscripts” – not a common occurrence in my experience. Indeed, the curator, Anna B. Selfridge, was kind enough to tolerate my visit for four hours! Near the end of this marathon visit, with aplomb and unassuming resourcefulness, she quietly produced a plot map of the cemetery without my even asking, dated 1902 – a date which was neither close to his burial date nor that of any parent nor (seemingly) relative. Yet, there was his name and the plot he had apparently chosen at the age of about 44 years. Now, since he died at the age of 75 in Rochester, Indiana, the plot map she so kindly produced was still far from conclusive evidence, but I was elated.

Copyright 2006, Raymond C. Kidd. All rights reserved. Used here with permission.



Once again, on the day following my visit, I again drove out to the Rockport Cemetery, and eagerly paced off the distances, examining each headstone as I went. I discovered that the plot map was for family-sized plots, not individual, as I naively had assumed at first, so there were additional headstones with names differing from the plot map. Yet, when I arrived at the paced distance, all I found was empty grass. The closest headstone to the empty site was a soft, white sandstone monument adjacent to other, unrelated, headstones. The markings on the white monument had long ago eroded to indecipherability. Still, I tried and, with my finger tip, carefully scraped away years of dirt and moss. "N," then "E," (my mind raced), then "M"! He had used **initials**! It went on. Another character: "&," then an "L," followed by an "M"! I had found them both! The name "Kidd" appeared below the initials with only a little more work.

The answer to the puzzle is now much more apparent, of course, upon my revisiting my home research notes. According to our family bible, Lydia Mariah died in 1899. I feel safe in making the leap of logic that the plot map was simply recording an already existing grave, probably purchased two to three years prior to the 1902 date, and marked with a monument of a dedicated and bereaving husband who knew where he wanted to be buried – 34 years later as it turned out. Apparently, his second wife was gracious enough to return him to his birthplace community to be buried – next to his first wife and across the pathway from several other relatives, including his parents, whose plots were acquired much later, but, even then, twenty-two years before my great grandfather died. Welcome back to the family, Grandpa.



## Homestead Entry Notices: Bossier Parish

[From the Bossier Banner, Benton, LA]

*Submitted by Willie R. Griffin*

The Homestead Act of 1862 had an immediate and enduring effect on America and the world that is still felt today. Agriculture, industrialization, immigration, American Indian tribes, prairie ecosystems—all were somehow impacted and forever changed by the implementation of this revolutionary land law. Over the course of the Act's 123-year history, over two million individual homestead claims were made.

The paperwork required of homesteaders before they could obtain a patent, or title, to part of the public domain resulted in exceptionally detailed land records. Called land-entry case files, these records describe improvements made to the property, including houses constructed, wells dug, crops planted, trees cleared, and fences built. Some case files mention family members who lived on the land. If the claimant died and a widow or heirs completed the homesteading process, a date of death is given and relationships are explained. Because military service could reduce the residence period, information regarding such service is sometimes included. Resident aliens who had declared their intention to become citizens provided information about their naturalization process and occasionally even mentioned place of origin. In other words, the land-entry case files of homesteaders are as important source of genealogical information.

Each and every one of these claims generated a written record known as a case file that was kept by the U.S. General Land Office. Today, these case files exist only as paper originals and are stored in the National Archives in Washington, D.C. The complete collection of case files created under the Homestead Act contains over 30 million individual pieces of paper.

There is no general name index to these files, they have not been reformatted in microform or digital form, and they are not available in any other repository. (A name index to the pre-July 1908 case files does exist at the Archives on file cards for Alabama, Alaska, Arizona, Florida, Louisiana, Nevada, and Utah.)

[Source: Homestead National Monument of America, National Archives, Washington, D.C.: [www.archives.gov](http://www.archives.gov).]

### Homestead Entry No. 6037

Department of the Interior,

Land office at Natchitoches, La.: December 18, 1899.

[*The Bossier Banner*, Thursday, February 1, 1900.]

Notice is hereby given that the following named settler has filed notice of her intention to make final proof in support of her claim; and that said proof will be made before the Clerk of the District Court, at Benton, La., on February 3, 1900, viz: **Homestead Entry No. 6037** – Sallie Harris, widow of Wesley Harris – for the south half of northeast quarter of section 14, township 21 North range 12 West Louisiana Meridian.

She names the following witnesses to prove her continuous residence upon and cultivation of said land, viz: Scott Carter, Lewis Chaffe, of Rocky Mount P.O., La; Albert Carter and Sam Johnson, of Ivan P.O., La.

*J. Ernest Breda, Register. December 21, 1899.*

### Homestead Entry No. 5834

Department of the Interior,

Land office at Natchitoches, La.: March 16, 1900.

*[The Bossier Banner, Thursday, May 10, 1900.]*

Notice is here by given that the following named settler has filed notice of his intention to make final proof in support of his claim; and that said proof will be made before the Clerk of the District Court, at Benton, La, on May 10, 1900, viz: **Homestead Entry No. 5834** – Matthew Mims – for the southeast quarter of section 20, township 17 North, range 11 West, Louisiana Meridian.

He names the following witnesses to prove his continuous residence upon and cultivation of said land, viz: George Thomas, Tom Wilson, Bob Brooks and Ton Rascose, of Haughton, La.

*J. Ernest Breda, Register. March 22, 1900.*

### Homestead Entry No. 5610

Department of the Interior,

Land office at Natchitoches, La.: December 8, 1899.

*[The Bossier Banner, Thursday, December 14, 1899.]*

Notice is here by given that the following named settler has filed notice of his intention to make final proof in support of his claim; and that said proof will be made before the Clerk of the District Court, at Benton, La, on January 25, 1900, viz: **Homestead Entry No. 5610** – John Richard Honeycutt – for the northeast quarter of southwest quarter of section 22, township 23 North, range 13 West, Louisiana Meridian.

He names the following witnesses to prove his continuous residence upon and cultivation of said land, viz: A. R. Thompson, of Benton P.O., La.; R. H. Davis, A. P. Davis, H. C. Wyche, of Roberta P.O., La.

*J. Ernest Breda, Register. December 14, 1899.*

### Consolidated Homestead Entries

Department of the Interior,

Land office at Natchitoches, La.: May 27, 1899.

*[The Bossier Banner, Thursday, June 8, 1899.]*

Notice is hereby given that the following named settlers have filed notice of their intention to make final proof in support of their claims, and that said proof will be made before B. A. Kelly, Clerk of the District Court, at Benton, La., on July 15<sup>th</sup>, 1899, viz: **Homestead Entry No. 6115** – William Samuel Tate – for the northeast quarter of northwest quarter, and northwest quarter of northeast quarter of section 9, and east half of southwest quarter of section 4, township 20 North, range 11 West, Louisiana Meridian. He names the following witnesses to prove his continuous residence upon and cultivation of said land, viz: Wm. Roach and Thomas Toyer, of Bellevue, La., Wm. Wilson, of Ivan, La., and Dick Jennings, of Midway, La.

Viz: **Additional Homestead Entry No. 6590** – Thomas Toyer – for the southeast quarter of northwest quarter of section 9, township 20 North, range 11 West, Louisiana Meridian. He names the following witnesses to prove his continuous residence upon and cultivation of said land, viz: William Roach, of Bellevue, La., Wm. S. Tate and Wm. Wilson, of Ivan, La., Dick Jennings, of Midway, La.

*J. Ernest Breda, Register. June 1, 1899.*

### Homestead Entry No. 5424

Department of the Interior,

Land office at Natchitoches, La.: December 10, 1899.

*[The Bossier Banner, Thursday, December 14, 1899.]*

Notice is here by given that the following named settler has filed notice of his intention to make final proof in support of his claim, and that said proof will be made before the Clerk of District Court at Benton, La., on January 28, 1900, viz: **Homestead Entry No. 5424** – Dave Marshall – for the east half of southeast quarter of section 36, township 17 North, range 12 West, Louisiana Meridian.

He names the following witnesses to prove his continuous residence upon and cultivation of said land, viz: Jack Pennywell, Geo. Thomas, Joe Randall, J. T. McDade, Sligo P.O., La.

*J. Ernest Breda, Register. December 14, 1899.*

### Homestead Entries

Department of Interior,

Land Office at Natchitoches, La.: March 16, 1900

*[The Bossier Banner, Thursday, May 10, 1900.]*

Notice is hereby given that the following named settler has filed notice of his intention to make final proof in support of his claim, and that said proof will be made before Clerk of the District Court, at Benton, La., on May 10, 1900, viz: **Homestead Entry No. 6000** – Chapel C. Cezby – for the southwest quarter of southeast quarter, section 29, north half of northeast quarter, section 32, and the northwest quarter of northwest quarter, section 33, township 22, range 11 West, Louisiana Meridian.

He names the following witnesses to prove his continuous residence upon and cultivation of said land, viz: W. J. Johnston, W. F. McClelland and E. D. Foster, of Emma, La., and H. D. Bounds, of Rocky Mount, La.

**Homestead Entry No. 5975** – Martin H. Coile – for the southwest quarter of northwest quarter, section 28, east half of southeast quarter and southeast quarter of northeast quarter, section 29, township 22, range 11 West, Louisiana Meridian.

He names the following witnesses to prove his continuous residence upon and cultivation of said land, viz: W. J. Johnston and W. F. McClelland, of Emma, La., and M. W. Cason and E. E. Cason, of Ansel, La.

**Homestead Entry No. 6096** – Mary Ellen Williams – for the south half of northwest quarter, northwest quarter of southwest quarter, section 33, southeast quarter of northeast quarter, section 32, township 22 North, range 11 West, Louisiana Meridian.

She names the following witnesses to prove her continuous residence upon and cultivation of said land, viz: W. F. McClelland, E. D. Foster, and C. C. Cozby, of Emma, La., and H. D. Bonds, of Rocky Mount, La.

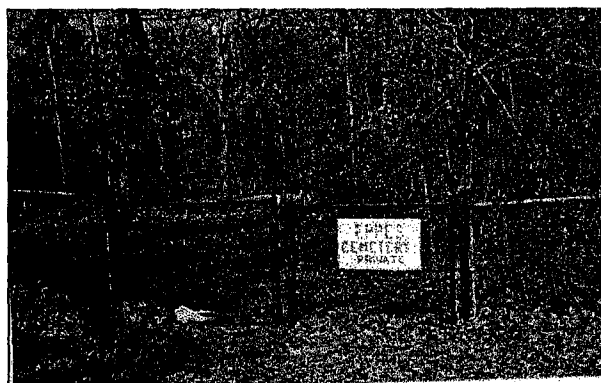
*J. Ernest Breda, Register. March 22, 1900.*

## **EPPE'S CEMETERY (AFRICAN-AMERICAN SECTION)**

**Eppes Cemetery** is located on Greenwood Rd., west of Pines Rd., and adjacent to the Police and Fire Academy. It is possibly the oldest cemetery in Caddo Parish, established before 1840. The front part of the cemetery contains white burials. A transcription of these markers has been published in book form. There is a fence and gate separating the white section from the African-American section. The African-American section may be as old as the white section, although the earliest burial shown on a tombstone in this section is 1898. There are at least 91 burials in the African-American section --- 66 markers with names and 25 without names. This survey was done in February 2007 by Reed Mathews, Carol Hill de Santos, and Joe Slattery. Format of the data was done by Carol. Please contact Joe Slattery at e-mail address [joeslatt@yahoo.com](mailto:joeslatt@yahoo.com) for questions and comments.



**The Main Entrance to the Cemetery**



**The African-American Section of the Cemetery**

**Eppes Cemetery (African-American Section)**  
*Caddo Parish, LA*

THE GENIE FIRST QUARTER 2007

37

*Markers Located to the Right of the Gate*

Name	Birth Date	Death Date	Additional Inscriptions	Notes
Hooks, Addie Lee	Aug 20			Broken stone; Dates might be 1906 - 22 May 1944
Traveller, Little	1855	19 June 1915		Top of marker missing
Taylor, Dan	1835 /36	1898		Broken stone
Johnson, Rachel Reeves	18 June 1887	23 Dec 1970		
Burdon, Ada	10 June 1872	10 June 1910	Wife of Ed	
Coleman, Landres	1890	3 May 1953		Good Shepherd Funeral Home marker
Robinson, Johnson	25 Mar 1895	1 Jan 1950	World War I, Private, LA 164 Depot Brigade	
Smith, Lucy	1871	30 Jun 1943		Broken stone
Holland, Thurmond	18 Mar 1935	24 Jun 1962		
Smith, Elex	1895	1931		Broken stone; Death date :April 24, 1931
Moore, Perleaner	1908	19 Nov 1925		
15 Blank Markers				

*Markers Located in the Back, Across the Gully*

Gardner, Lizzie	14 Mar 1916	26 Mar 1925		
Wright of Gate, Sam	1851	5 Mar 1922		
Wolace, Easter				Broken stone
Washington, Lily Mae	9 Sep 1917	18 Feb 1938		
Washington, Will	26 Jul 1871	29 Jan 1939		



**Eppes Cemetery (African-American Section)**  
**Caddo Parish, LA**

*Markers Located to the Left of the Gate:*

Wilson, Mattie	25 Dec 1867	28 Aug 1931		
Greene, Julia	26 Oct 1885	9 Apr, 1954		
Mayshack, Preston	18 Aug 1898	26 Apr 1958		
Smith, Rev. James Napeolm	24 Dec 1881	23 May 1956		
Shelton, Celia	1882	1949		Death date: May 15
Mayshack, Laura	22 Feb 1876	23 Aug 1933		
Johnson, Milton	1845	17 June 1908		
Reeves, Jane	1850	24 June 1916		
Page, Louis	1857	4 Aug 1923	Wife of Alex	
Booker, Mary	1 May 1864	19 Dec 1926		
Holden, Doc	1844	26 Feb 1913		
Holden, Sisly Peterson	1845	14 Jul 1917	Wife of Dock	
Kneeves, Moses	1829	6 Oct 1908		
Neaves, Anderson	1829	1902	Talbotton, Georgia	Marker has fallen
Neaves, Ellen	1826	9 Nov 1912	Amite, Mississippi; Wife of Anderson	Marker has fallen
Reeves, Mary H.	30 Jul 1892	28 Jun 1931		
Anthony, Essie	1909	15 Jul 1941		
Holden, Sisly	30 Aug 1884	10 Dec 1954	Daughter of Dock and Sisly	
Allen, Clotile	1900	1953		
Patterson, James	1880	29 Jan 1922		
Shelton, Leanna Randolph	30 Sep 1900	16 May 1975		
Mims, Fred	25 Dec 1874	23 Aug 1923		
Mims, Willie Ann	19 Apr 1876	24 Feb 1946		
Mims, Hattie	3 Nov 1907	17 Mar 1926		
Shelton, Jr., John Henry	15 Dec 1902	11 Jan 1961	Grandson of Dock Holden	
Modelist, Johnetta Shelton	1 Dec 1923	7 Feb 1973	Great-granddaughter of Dock Holden	

**Eppes Cemetery (African-American Section)**  
*Caddo Parish, LA*

THE GENIE FIRST QUARTER 2007

39

Holden, Gertrude B.	29 May 1884	5 Sept 1972		
Hall, Arneader Holden	30 Apr 1894	27 Nov 1961		
Hall, Earnestine	1926	1945		Death date: August 12
Hall, Nettie Holden	5 Aug 1902	31 Jan 1969		
Hall, Samantha	20 May 1900	2 Mar 1922		
Holden, Miles	1871	1941		Death date: February 7
Jackson, Samuel	1888	17 Apr 1910		
Jackson,			Age 35	Broken stone
Jackson, Edward	23 Sep 1855	29 Dec 1934		Broken stone with missing name
Carter, Alberta	23 Jun 1905	12 Feb 1962		
Johnson, Amanda	1884	30 Mar 1944		
Minter, Sylvester	8 May 1892	16 Nov 1962		
Minter, Lela H.	7 Feb 1883	8 Apr 1957		
Young, E.M.	1884			
Williams, Alberta	1903	23 Jan 1955		
Johnson, Johnnie	1880	11 Feb 1920		
Young, Jorden	1824	12 May 1909		
Whitney, Pearlie				Dates may be 1886 - 14 May 1919
Johnson, Bella	1856	1898		
Jackson, Robert	Jan 1900	Jul 1901		
Anderson, Mary	1861	17 Jan 1901		
Jackson, Elmo	1890	25 Sep 1907		
Jackson, Samie	1884	31 Feb 1905		Death date could be Feb 28 or 29
Jackson, Adwyer	1893	31 Dec 1909		
10 blank markers				

### **Have You Paid 2007 Dues?**

*Dues for the calendar year 2007 are now due. If you have not yet remitted your payment, we urge you to do so.*

*An application for new and renewing members was enclosed in the last Genie. It is very important that you complete this form and mail it with your remittance.*

*If you have sent your check without the completed application, please fill it out and send it or bring it to the next monthly meeting.*

### **Does ALTGA Have Your Correct Address?**

To comply with Post Office requirements, we must periodically check and certify our mailing list.

Please look at the label on this Genie. Is your address correct? Does it include the nine-digit zip code? If your address is not correct, please notify Herman Weiland at ALTGA, P.O. Box 4463, Shreveport, LA 71134-0463

If your mailing address changes during the year, please notify the ALTGA immediately, as we are required to pay full postage for all returned quarterlies.

*2007 NGS Conference and Family History Fair*  
Rediscover Virginia  
400 Years of Family History  
16 – 19<sup>th</sup> May, 2007  
Richmond, Virginia

Welcome to the show site for the 2007 NGS Conference in the States and Family History Fair scheduled for 16-19 May 2007. The National Genealogical Society together with the Virginia Genealogical Society, the Fairfax Genealogical Society, and the Genealogical Research Institute of Virginia (GRIVA) will be hosting this year's conference which will bring together genealogists and family historians from around the country and beyond. NGS's website: [www.ngsgenealogy.org](http://www.ngsgenealogy.org).

The 2007 conference which marks the 400th anniversary of the founding of America in 1607 and the first settlement in Jamestown, Virginia, will be held at the Greater Richmond Convention Center and Richmond Marriott Hotel in Richmond, Virginia.

William Byrd II named the city Richmond because the bend in the James River is similar to that of the Thames in Richmond, England. Richmond has more than 400 years of history; it was the second successful English settlement, the site of Patrick Henry's famous "Give me liberty or give me death" speech, and the former capital of the Confederacy.

Richmond, which lies at the falls of the James River is central to the many regions of the state-to the east brackish waters feed into the Chesapeake Bay, to the west is the vast Piedmont plain bordered by the Blue Ridge Mountains, which with the Appalachian Mountains shelter the Valley of Virginia--the funnel for migration south and west. The Richmond Region has it all - upscale shopping, fabulous restaurants, heart-pounding sporting events, world-renowned museums, vibrant culture, elegant homes and gardens and family fun for everyone. Of course central to the interest of family historians will be the many research collections at Library of Virginia and the Virginia Historical Society.

The conference program details are coming soon - but highlights include: Day-long tracks on DNA, the Library of Congress, National Archives records, Virginia records and repositories

A special, "*Beginning Your Family History*" track on Saturday

Workshops on Handwriting, Finding and dating postcards for your family history, Court records, Advanced Chancery Record Research, Land Platting, and Mapping Workshop for Genealogists

Computer workshops on DeedMapper, GenSmarts, Legacy, Master Genealogist, Photo Image Digital Manipulation Using Software, Excel for the Genealogist, Microsoft Word for the Genealogist, Optimizing Your Computer at No Cost, Backup Strategies and Tools.

Lectures on English, Irish, Scots-Irish, German, African-American, and Indian Research; Kentucky, West Virginia, Maryland, Pennsylvania, North and South Carolina, Tennessee, and Washington, DC; military records, migration paths, railroads, indentured servants, searching the Internet; conference-long Methodology track, researching women.

Then, before the summer is over, there's the **Federation of Genealogical Societies'** annual conference in Fort Wayne, Indiana. FGS is partnering with the Allen County Public Library to host this conference August 15-18. Of course, the Allen County Public Library is one of the top ten genealogical research centers in our country. And, it will be showing off its new home! FGS's website: [www.fgs.org](http://www.fgs.org).

Searching for a new editor of **The GENIE!**  
Contact Willie Griffin at: (318) 631-6031 or  
E-mail: [wraygriffin3@bellsouth.net](mailto:wraygriffin3@bellsouth.net)



## **Louisiana Baptist Church Records on Microfilm** **At the** **Southern Baptist Historical Library and Archives**

The Southern Baptist Historical Library and Archives is a worldwide center for the study of Baptist history. Operated by the Council of Seminary Presidents, the SBHLA is one of the major denominational collections in the nation and serves by assignment of the Southern Baptist Convention as the central depository and archives of SBC records. The Library and Archives is located on the fourth floor of the Southern Baptist Convention Building at 901 Commerce Street, # 400 in Nashville, Tennessee 37203-3630. The library is open Monday through Friday from 9:00 a.m. to 4:00 p.m. and other hours by special appointment.

### **FACILITIES AND SERVICES**

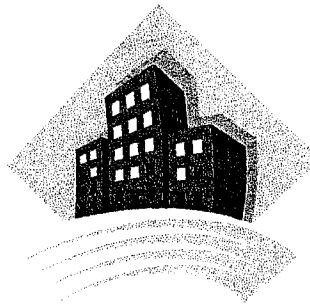
The Southern Baptist Historical Library and Archives is available to all researchers. Some collections have access restrictions; therefore, it is good to contact our staff before your visit so your research needs can be met. Some findings aids are available for viewing or downloading from the [Guide page](#) on their website at [www.sbhla.org](http://www.sbhla.org).

The research center contains photocopy machines, microfilm readers and reader/printers, a separate research room, an audio-visual listening and viewing room and three public access computers. Photocopies are 10 cents each (25 cents if done by the library staff). Copies made from microfilm are 25 cents each (50 cents each if made by library staff). Library check-out privileges and research assistance are available.

OCLC and Southern Baptist Periodical Index databases provide bibliographic services. A card catalogue lists the library and archives holdings. Inventories are available for most archival and manuscript collections. Some inventories are available for viewing or downloading on the [Guide page](#) on their website.

Researchers may bring their own computers or silent typewriters for use in the research room. A break room is available to researchers and provides free coffee and tea; vending machines supply soft drinks and snacks. Free parking on the ground level of the SBC building is available to researchers in the SBHLA.

Researchers are requested to register upon arrival. Advance notice of arrival will allow the staff to have materials ready for researchers. For more information about this service or to inquire about purchasing copies of Baptist documents from other microfilm collections call 1-615-244-0344.





*Louisiana Baptist Church Records: Microfilms Listing*

Location	Church Name	MF#	Cost
Alexandria	Riverview B.C., Church Minutes, 1888-1918.	6844	\$10.00
Baton Rouge	Sherwood BC. Church Minutes and Church History, 1968-1993.	6774	\$40.19
Bernice	Shiloh BC. August 1865-August 1919. 676pp.	1060	\$30.42
Bernice	First BC, 1900-1917. 168pp.	4454	\$10.00
Bernice	Pine Grove BC. Church Minutes, 1890-1974	6772	\$31.68
Bernice	Pisgah B.C. Church Record Book, 1926-1938 and Miscellaneous Papers.	6842	\$10.00
Bienville	First BC, 1894-April 1969. Formerly Bienville BC. 956pp.	3539	\$43.02
Bunkie	First BC. Church minutes 1892-1994. 2921pp.	6983	\$131.45
Castor	Old Saline BC. 1844-1998. (Missing November 1889-September 1942). 1487pp. Guest Book from 150th anniversary, Articles of Incorporation, List of Pastors, Church History.	2132	\$66.92
Cheneyville	Oak Grove BC of Clearwater. 1921, 1944-1996. Minutes, histories, financial records.	6918	\$75.78
Claibourn Parish	Mt. Paron Primitive BC, 1853-1881. 198pp.	1589	\$10.00
Corlyss	Vincent BC. Church Minutes 1886-1905, 1912-1920.	6956	\$11.07
Coushatta	Martin BC. Church enrollment 1940-1946, church minutes 1975-1992.	6884	\$58.05
Coushatta	Martin B.C., Church Minutes, Oct. 1946-Sept. 1975.	6843	\$27.68
Coushatta	Liberty BC. Church Minutes, 1883-1966	6773	\$24.57
Covington	First BC, 1904-1972. 1,338pp.	4879	\$60.21
Denham Springs	Hebron B.C., Church Minutes and Financial Records, May 1837-Feb. 1994.	6812	\$107.33
Deridder	Temple Baptist Church. Minutes. May 27, 1951 - June 14, 1995	6849	\$54.00
Deville	Philadelphia BC, May 1918-September 1981. Lacking: July 1927-July 1929, October 1938-March 1941, August 1943- June 1948. 1,106pp.	5440	\$49.77
Deville	Uniform Letters, Incomplete 1931-1951, 1964 Church Enrollment Book, 1953-1974 Training Union Records, March 1950-Oct. 1950	6770	\$57.60
Dubberly	Fellowship BC, 1848-1864. 132pp.	4215	\$10.00

Effie	Macedonia BC. Church minutes 1901-1931.	6883	\$10.00
Elton	First BC. 1910-1955; 1955-1959; 1959-1967; 1966-1991; 1991-1994; 1994-1996;	2108	\$107.87
Evergreen	Bayou Rouge BC. Church minutes July 25, 1841-January 10, 1999. 1918pp.	7028	\$86.31
Florien	Mount Carmel BC. Church minutes 1888-1972. 1386pp.	6982	\$62.37
Forest Hill	Forest Hill BC. 1899-1997. 1,629pp.	6032	\$73.31
Franklinton	Bethel Baptist Church. Church Membership. 1907-1945.	6850	\$13.14
Gaar's Mill	Harmony Grove BC. Church Minutes and membership rolls. 1877-1966. 634pp.	6966	\$28.53
Gibbsland	Mt. Lebanon BC, 1835-1939. 647pp.	310	\$29.12
Glenmora	Amiable BC, 1829-1977. 1,420pp.	5372	\$63.90
Grayson	Grayson BC. 1936-1995. Minutes, financial records, membership.	6917	\$60.75
Homer	First Baptist Church. Minutes 1851-1903.	6848	\$30.06
Jackson	First BC, 1835-1958. 1,328pp.	263	\$59.76
Jena	First BC, February 1850-September 1872. Formerly Salem BC. 88pp.	5328	\$10.00
Jonesboro	Ebenezer BC. Church minutes. 1849-1997. 1,456pp.	6965	\$65.52
Lake Charles	First BC. Minutes, March 1880-September 1888. Statistics, 1888-1910. 338pp.	5572	\$15.21
Lecompte	Trinity BC. Church Minutes, 1888-1916	6771	\$10.00
Leesville	Laurel Hill BC. 1869-1945. 576pp.	6306	\$25.92
Many	First BC, 1908-1976. 988pp.	4991	\$44.46
Merryville	First BC, 1926-1969. 2,176pp.	3260	\$97.92
Metairie	Highland BC, 1953-1975. 616pp.	4382	\$27.72
Minden	First BC, 1844-1980. 4,700pp.	3275	\$211.50
Minden	Parkway BC. Church Minutes, bulletins, newspapers. 1949-1996. 1576pp.	7030	\$70.92
New Iberia	First BC. July 1926-December 1980. Lacking October 1961-June 1965, February 1968-September 1969. 2,038pp.	5288	\$91.71
New Orleans	St. Charles Avenue BC. Church histories 1898-1973, 1974-1988; Directories, bulletins, newsletters, membership records, minutes, financial records, church letters.	6891	\$726.84
Oakland	Spring Hill Baptist Church. Church Minutes. 1872-1966.	6851	\$10.89

Opelousas	Calvary BC. Church Minutes. June 1961-September 1996. POSITIVE ONLY - NEGATIVE NOT AVAILABLE (see Pub. sheets)	6944	\$33.03
Plaquemine	Bayou Plaquemine BC. Church minutes 1946-1998. 1289pp.	7027	\$58.01
Pollock	Friendship BC. Fishville (Pollock), Louisiana. Church Minutes 1870-1947. 766pp.	6981	\$34.47
Rapides Parish	Amiable BC, 1829-1904. 302pp.	3840	\$13.59
Seiper	Dixie BC. Church minutes 1919-1984.	6882	\$76.86
Shreveport	Broadmoor BC. 1930-1989. 3,216pp.	6680	\$144.72
Shreveport	Emmanuel Baptist Church. Church Records, Apr. 20, 1941-Dec. 31, 1993.	6811	\$100.44
Slaughter	Slaughter BC, 1874-1922. 224pp.	2115	\$10.08
Sterlington	First BC, 1927-1944. 286pp.	1590	\$12.87
Tangipahoa Parish	Mount Nebo BC, 1813-1903. 382pp.	3924	\$17.19
Taylor	Taylor BC, October 1909-1983. 528pp.	5594	\$23.76
Union Hill	Union Hill BC. Church Minutes 1884-1904.	6889	\$10.00
Ville Platte	Calvary BC, 1846-1947. 760pp.	1131	\$34.20
West Monroe	First BC. History, 1848-1953. 464pp.	378	\$20.88

### Query Guidelines:

Queries are to be sent to ALTGA, PO Box 4463, Shreveport, LA 71134-0463 or through <http://www.rootsweb.com/~laaltga/> link to the editor. The most effective query is short and concise in length containing Who, What (an event), When (the year), and Where about one person or surname. Please include your US postal address! The editors reserve the right to edit queries and print them as space permits.

# List of 20 Grand Jurors Selected for January, 1900, Term. [State of Louisiana, Parish of Bossier]

Submitted by Willie R. Griffin

(The Bossier Banner, Benton, LA, Tuesday, 1 Feb 1900.  
*Microfilm at the Bossier Parish Historical Center.*)

Be it remembered, that on this, the 14<sup>th</sup> day of December, A.D. 1899, we, the Jury Commissioners whose names appear hereunto, met at the Clerk's office, in the town of Benton, La., and proceeded to select from the General Venire List, (being previously prepared by us) in accordance with the provisions of Act 135, of General Assembly of Louisiana approved July 13, 1898, twenty (20) citizens possessing all the qualifications under said act (taken from different portions of the parish) to serve as Grand Jurors for the term of six months from date of the empanelling of the Grand Jury, and until a succeeding Grand Jury shall have been empanelled, to-wit:

No.	Name	Ward
1	Willis Allen,	4
2	R. H. Allen,	4
3	T. Z. Barnett,	3
4	J. C. Belcher,	3
5	W. H. Bledsoe,	6
6	J. C. Childers,	3
7	C. C. Cozby,	4
8	J. F. Edwards,	6
9	C. O. Gayle,	2
10	W. A. Huey,	1
11	J. M. McCall,	5
12	W. T. McDade,	6
13	W. B. McCormick,	2
14	J. A. Martin,	4
15	W. D. Mercer, Sr.,	1
16	Wm. Metz,	5
17	S. S. Rounsevall,	6
18	S. W. Vance,	2
19	R. M. J. Wise,	3
20	R. E. Young,	5

Done and signed, officially, on this, the 14<sup>th</sup> day of December A.D., 1899. All the Commissioners being present except H. P. Moore who was duly notified, but failed to appear. W. D. Wadley, J. B. Bumgardner, R. S. Doles, L. T. Sanders, Commissioners. B. A. Kelley, Clerk and ex-officio Commissioner.

Attest: A. R. Thompson and T. T. Land, Jr.

## ***Materials Submitted for Publication in The GENIE***

Contributors should submit material to be published in the Quarterly typed in clean black on white bond paper and single-spaced. Submissions can be submitted on disk or by email attachment. Carbon copies or Onion Skin paper is not acceptable. Pictures submitted for publication will be reproduced and returned if a **Self-Addressed Stamped Envelope (SASE) and postage** accompanies the pictures.

### **Deadline for submitting articles are as follows:**

First Quarterly	Submission due by February 15.
Second Quarterly	Submission due by May 15.
Third Quarterly	Submission due by August 15.
Fourth Quarterly	Submission due by November 15.

Send Articles for publication to: Ark-La-Tex Genealogical Association  
Attn: Editor  
Post Office Box 4463  
Shreveport, LA 71134-0463

### **Items suitable for printing.**

Each article submitted will be proofed for clarity, grammar, punctuation, and documentation.

1. Family and historical articles. Both family and historical articles should be documented and/or sourced Footnotes or endnotes may be used.
2. Footnotes and endnotes are used to show where the information comes from or to explain the information. If the footnotes/endnotes are more interesting than the article, then the focus of the article needs to be redone.
3. Photos – should be at least 50 years old.
4. Bible Records – the youngest date should be at least 75 years old for privacy reasons.
5. Courthouse Records – the records should be at least 50 years old.
6. Cemetery Records – can be a transcription of the tombstones or may contain extra information on persons and/or the cemetery itself.
7. Newspaper Records – should be at least 50 years old. Very old obits, as well as bios over 75 years old.
8. Compiled genealogies (descendants) and compiled lineages (ancestors) may be published, but must be documented. Footnotes or endnotes must be used.
9. Ahnentalfel may be printed, but must start with the member and must show at least one person that lived in the Ark-La-Tex area. Data must show: name, birth, marriage, and death dates, as well as places, even if they have to be calculated.
10. Pedigree charts – only four generations please. Data must show: name, birth, marriage, and death dates, as well as places, even if they have to be calculated.

### **Items not suitable for printing.**

1. Jokes, poems, cartoon strips, etc.
2. Non-genealogy/historical related articles.

# *Parish Map of Louisiana in 1860*





I'd like to seek your advice and suggestions for an oddball book I'm writing about strange and peculiar things, people, places, and events in Louisiana. As a former resident of Shreveport, I'm excited to have an opportunity to write about my old home state, so I'm casting my net far and wide to see what I can possibly haul up. I hope to visit your parish soon during one of my upcoming fieldtrips, but meanwhile I'm also hoping you'll take a moment to send me a few leads so I'll know where to go when I get there.

If you would, please glance at the list of proposed chapters (below) and let me know if anything comes to mind. I'll be working on the book for the rest of the year, so even if you remember something weeks from now, go ahead and send it to me (Rmanley@aol.com). Anything you send that makes it into the final book will be credited and acknowledged as your contribution, too. Not everything needs to still be in existence—I'm interested to know where something bizarre happened two hundred years ago, or where something weird *used to be*—though since I'm going to follow up on as many suggestions as I can with actual visits, it would sure help me plan better if I knew beforehand whether something's still there or not! Also, if you know of something weird in another part of the state or outside your usual bailiwick, it's okay to mention that too. I'm trying to leave no stones unturned!

Here are random examples of the kinds of things I'm hunting, just to jog your thoughts, but by no means is this list all I hope to find:

- **Regional Legends:** buried treasure, weird Civil War stories, Indian maidens, lover's leaps
- **Mysteries of the Past:** lost towns, unsolved murders, disappearances, Indian mounds, springs
- **People & Places of Folklore:** Whooping Boy, voodoo cults, Mardi Gras societies, nudists
- **Unexplained Phenomena:** mystery lights, UFOs, sand geysers, rains of objects or critters
- **Odd Beasts:** Bigfoot, swamp monsters, sea serpents, werewolves, Siamese-twin nutria or gators
- **Local Villians & Heroes:** serial killers, Civil War renegades, snake-oil salesmen, town heroes
- **Self-Made Environments:** whirligig farms, shell gardens, hubcap houses, strange museums
- **Roadside Attractions:** giant accordions, giant sno-balls, snake farms, odd mailboxes, yard art
- **Roads to Avoid:** haunted highways, infamous crime scenes, cursed RR crossings or bridges
- **Ghosts & the Paranormal:** haunted houses or boats, ghost trains, apparitions, odd sounds
- **Creepy Cemeteries & Peculiar Monuments:** either to the dead or the still-living
- **Forgotten Sites:** abandoned mills, hospitals, military sites, prison ruins, convents, plantations
- **Odd Names:** for towns, or businesses like the Squat'n'Gobble Café, or Hairy Kerri's Hair Salon
- **Miscellaneous Oddities:** bottomless ponds, bomb craters, art cars, taxidermy masterpieces, UFO-shaped buildings; cars, airplanes, or pianos mounted on signs; weird murals or billboards ...

By now I'm sure you get the idea—but what are *your* ideas? As you can probably tell, this book will be part travel guide, part "Believe It Or Not!" and part reading-just-for-fun—but I do want the entries to be as accurate (and unusual) as possible. Anything like Xeroxed clippings, photos, street addresses, references to books or websites you can provide is great, but *any* clues to help me get started on the right track toward finding something will be useful. I'm always delighted to see photos if you have any—and if they are good, I may even ask you if we can get permission publish them. One way or another, I just hope you'll feel like participating with me in this strange history scavenger hunt.

Nothing is too insignificant to mention. I'm interested in hearing about ping-pong balls that seem to roll uphill, birthmarks that look like Jean Lafitte, three-legged chickens, families who named their kids in alphabetical order, singing guinea pigs—in short, if there's anything that you find strange, funny, or out of the ordinary, please tell me about it! I'd really like to put your parish or community on a very out of the ordinary kind of map. Please ask other members of your group to contact me, too.

Email (sent to Rmanley@aol.com) is the quickest and easiest way to send me anything, but regular mail, clippings or photos sent to me at either of the following addresses will work, too.

Roger Manley  
1110 Burch Avenue  
Durham, North Carolina  
27701

Roger Manley  
4 passage des Abbesses - Boite 24  
F-75018 FRANCE

Thanks!

## SURNAME INDEX

A surname may appear more than once on a page.

Abney 23	Christ 12	Glazner 13	LaFayette 25, 28
Adams 19	Christensen 12	Goodspeed 12	Lainhart 18
Alexander 18	Clark 15	Graves 4, 5	Land 47
Allen 6, 7, 11, 13, 15, 18, 19, 38, 47	Clay 30	Greene 38	Lee 25, 37
Anderson 11, 39	Cline 13	Griffin 1, 33, 42, 47	LeMaster 13
Andriot 15	Cobb 15	Hackett 18	Levy 18
Anthony 38	Coile 35	Hall 15, 39	Leyburn 18
Arnold 12	Coleman 37	Hallum 13	Logan 14, 18
Atkinson 12	Collins 25	Harris 33	Madison 28
Askew 18	Core 12	Hart 29, 30	Maddox 30
Attaway 30	Cottrell 29, 30	Hempstead 13	Maddux 29, 30
Baker 25	Cox 14	Henderson 13, 30	Makower 15
Barnett 47	Cozby 35, 47	Henry 41	Manley 50
Barwick 27	Craig 12	Herndon 13	Manry 4
Beard 23	Crain 29, 30	Hibbard 18	Marion 26
Beasley 27	Cumming 15	Hill 26, 36	Marshall 35
Belcher 47	Curry 29	Hinshaw 18	Martin 47
Belton 5	Davis 19, 34	Hinson 13	Matthews 36
Benjamin 23	De Santos 36	Hodge 3	Mayshack 38
Bickham 30	Dillard 12	Holden 38, 39	McCall 47
Blair 3	Doles 24, 47	Holland 25, 37	McClelland 35, 47
Bledsoe 47	Dollarhide 16, 18	Honeycutt 34	McCormick 47
Bolton 12	Dougan 12	Hooks 37	McDade 22, 35, 47
Boltz 22	Douglas 29	Huey 47	McDonald 13
Bonds 35	Dugan 12	Husbrook 24	McLane 11, 13
Bonner 12	Durden 25, 27	Hutcheson 15	McMullen 11, 14, 25, 26
Booker 38	Edwards 47	Jackson 13, 15, 39	McRody 3
Boorstin 18	Ellis 25	James 5	Mercer 47
Bounds 35	Erwin 30	Jennings 2, 31, 34	Metz 47
Breda 33, 34, 35,	Faris 25	Johnson 33, 37, 38, 39	Meyer 5
Brooks 34	Ferguson 12	Johnston 35	Mills 18, 19
Brown 29, 30	Fetzer 25	Jones 2, 3, 4, 5, 11, 12, 13	Mims 34, 38
Bumgardner 47	Fields 25	Jordan 25	Minter 39
Burdon 37	Fischer 18	Karn 16	Modelist 38
Byrd 41	Foster 35	Kea 27	Modelski 15
Campbell 12	Franklin 15	Kelley 47	Moneyhon 14
Carter 12, 33, 39	Friedman 18	Kelly 34	Moore 37, 47
Cason 35	Fryers 5	Kemp 25	Morgan 14, 25
Cezby 35	Gales 11	Kennedy 5	Morrow 24
Chaffe 33	Gardner 37	Key 27	Napeolm 38
Chandler 25	Garsee 30	Kidd 31, 32	Neaves 38
Chapman 5	Gayle 3, 5, 47	Kneives 38	Needles 26
Childers 47	Gentile 5	Knight 13	Neville 3
Chism 12	George 3	Lackey 18, 19	Nunnally 28
	Gilmer 2, 3, 4, 5		

## SURNAME INDEX

A surname may appear more than once on a page.

Nutt 12	Stephenson 16	Zeigle 24
Oberly 18	Stevenson 14, 18	
O'Neill 5	Stokes 3	
Owens 25, 28	Tabor 13	
Page 38	Talliafero 3	
Patterson 38	Tapley 27	
Payne 14, 20	Tate 34	
Pennywell 35	Taunton 14	
Peterson 38	Taylor 14, 23, 37	
Phillips 15	Thomas 14, 34, 35	
Pickett 4, 5	Thompson 16, 24, 34,	
Platt 22	47	
Pilkinton 24	Thorndale 16, 18	
Prosser 25	Thurman 14	
Prucha 16	Tidwell 25	
Ramsey 18	Toyer 34	
Randall 35	Traveller 37	
Randolph 38	Vance 2, 4, 5, 47	
Rascose 34	Veal 25	
Reaves 14	Vernon 14	
Reed 22, 29	Wade 18	
Reeves 37, 38	Wadley 47	
Ristow 16	Walls 6, 7, 11, 13, 15,	
Roach 34	18,19	
Roberts 14	Ward 25, 26	
Robinson 37	Waring 23	
Rogers 14	Washington 4, 37	
Rooney 16	Weaver 24	
Rose 18	Weiland 6, 40	
Rounsevall 47	Westbrooke 14	
Sale 16	Whatley 20	
Sanders 15, 47	Whitfield 4, 5	
Sansom 30	Whitney 39	
Scott 23	Whitten 27	
Scovell 4	Wilkes 25	
Seaton 11	Williams 35, 39	
Selfridge 31	Wilson 34, 38, 39	
Shammas 18	Wise 1, 47	
Shelton 38	Wolace 37	
Sheppard 17	Wood 14	
Shinn 14	Woods 14, 29, 30	
Simms 13	Wright 37	
Slattery 36	Wyche 34	
Smith 19, 25, 37, 38	Yancey 14	
Stark 12	Young 39, 47	