

VOLUME 42

FIRST QUARTER 2008

NUMBER 1

PUBLISHED QUARTERLY BY

ARK-LA-TEX GENEALOGICAL ASSOCIATION, INC.

P.O. BOX 4463
SHREVEPORT, LOUISIANA 71134-0463

THE GENIE

VOLUME 42

FIRST QUARTER 2008

NUMBER 1

TABLE OF CONTENTS

FEATURES

- | | | | |
|----|--|----|--|
| 2 | Unidentified Bossier Parish Burial Site
By Dale Jennings | 33 | Bossier Parish Library Historical
Center
Submitted by Ann Middleton, Director |
| 5 | ALTGA's Horn-Book: "Who Were
the Parents of Ida Van Norris?"
By Philip Adderley, Glenda Bernard,
Marilyn Christian and Ann Wise | 34 | Venire of Jury for January: 1890
State of Louisiana – Parish of Bossier |
| 18 | 2008 Membership Renewal | 36 | Bossier District Court [1891]
Submitted by Patricia W. Griffin |
| 19 | Ark-La-Tex — Committees | 38 | Bossier School Bus Drivers: 1947
Submitted by Ann Middleton |
| 21 | In Memory of A Deceased Member,
Mrs. Lena Ford Cowan | 40 | Bossier Parish School Board
Proceedings, Benton, LA,
January 3, 1891
Submitted by Willie R. Griffin |
| 21 | Does ALTGA Have Your Correct
Address? | 45 | ALTGA's Horn Book: Medical
Records for Genealogical Purposes
Prepared by Glenda Bernard |
| 22 | Historic Shreveport | 47 | Morningstar Baptist Church, Gloster,
De Soto Parish, Louisiana
Submitted by Willie R. Griffin |
| 24 | Beginners' Genealogy Class
Sponsored by the Ark-La-Tex
Genealogical Association | | |
| 25 | Pedigree Charts and Family Group
Sheets | | |
| 27 | Genealogical Standards & Guidelines | | |
| 28 | Queries Solicited | | |
| 30 | Alexander No. 1 Missionary Baptist
Church, Oak Ridge, Louisiana,
By Isabelle Woods | | |

DEPARTMENTS

- | | |
|----|---|
| 1 | The President's Message
By Willie R. Griffin |
| 17 | Exchange Periodical Review
Compiled by Constance Whatley |
| 29 | Queries |

ARK-LA-TEX GENEALOGICAL ASSOCIATION, INC.

Post Office Box 4463
Shreveport, Louisiana 71134-0463

The *Ark-La-Tex Genealogical Association, Inc.* is a non-profit, non-sectarian, non-political, educational organization dedicated solely to the cause of genealogy. This organization is governed by these purposes:

To collect, preserve, and make available genealogical materials, documents, and records; to encourage an interest in genealogy and to sponsor educational programs for its development; to promote and publicize the City of Shreveport, Louisiana, as a major genealogical research center for genealogists and historians; to cooperate with and assist all other genealogical, historical, and patriotic societies in the furtherance of these purposes; to compile and publish a quarterly composed of records and data related to the science of genealogy.

The *Ark-La-Tex Genealogical Association, Inc.* meets on the second Saturday of each month from 1:00 p.m. to 3:00 p.m. at the Randle T. Moore Senior Citizen Center, 3101 Fairfield Avenue, Shreveport, LA.

Dues for membership from January 1 through December 31 of each year in the *Ark-La-Tex Genealogical Association, Inc.* are \$20.00 for an Individual Membership and \$25.00 for an additional family member, same household, and one quarterly per household.

All members receive four issues of The GENIE, which is published quarterly.

The *Ark-La-Tex Genealogical Association, Inc.* will publicize a book of genealogical interest in The GENIE when submitted by the publisher or an author. These books are then donated to the Shreve Memorial Library, Broadmoor Branch Genealogy Department, 1212 Captain Shreve Drive, Shreveport, Louisiana 71105, where they are made available to the public. The Ark-La-Tex Genealogical Association, Inc. periodically donates other genealogical material to this library.

The *Ark-La-Tex Genealogical Association, Inc.* welcomes queries, which are published free in The GENIE. A query must be no more than seventy (70) words, either typewritten or legibly handwritten.

BOARD OF DIRECTORS FOR 2008

President	Willie R. Griffin	wraygriffin3@bellsouth.net
First Vice President	Reed Mathews	reedmathews@yahoo.com
Second Vice President	Jim Johnson	jjohnson747@suddenlink.net
Recording Secretary	Cynthia D. Millen	millencndyl@wmconnect.com
Corresponding Secretary	Victor C. Rose	vcrnels@aol.com
Treasurer	Herman L. Weiland	(318) 746-5811
Trustee (2008-09)	Anne Wise	annewise@suddenlink.net
Trustee (2008-09)	Glenda E. Benard	gebernard@bellsouth.net
Trustee (2007-08)	Cynthia D. Millen	millencndyl@wmconnect.com
Trustee (2007-08)	June L. Scholes	jscholez@aol.com
Past President	Raymon Owens	blickblaque@shreve.net

PUBLICATION (THE GENIE)

Editor	Willie R. Griffin	wraygriffin3@bellsouth.net
Book Reviews	Herman L. Weiland	(318) 746-5811
Queries, Typing & Indexing	Isabelle Woods	fdoll41@cs.com
Printing	Victor C. Rose	vcrnels@aol.com
Labels	Michael Broussard	
Exchange	Constance Whatley	cwhatley2@comcast.net
Bulk Mailing	Herman Weiland	(318) 746-5811
Bulk Mailing	Reed Mathews	reedmathews@yahoo.com

ALTGA COMMITTEES

Hospitality	Thelma Sabbath	(318) 635-3637
Hospitality	Cynthia D. Millen	(318) 929-2983
Telephone	Vernell Rose	(318) 687-3673
Finance	Isabelle Woods	(318) 746-8873
Programs	Anne Wise	(318) 747-9878
Publicity and Greeter	Chris Stoll	(318) 746-0383
Education	Phil Adderley	(318) 286-7762
Web Page	Jim Johnson	(318) 746-1851
Seminar	Willie Griffin	(318) 631-6031
Membership	Reed Mathews	(318) 797-6550
Historian	Betty M. McCabe	(318) 861-7469

Visit our website : <http://www.rootsweb.com/~laaltga/>

Statement of Publication

[Ark-La-Tex Genealogical Association, Inc.]

The Genie is published quarterly with issues in March, June, September and December. Each member receives four issues for each year of membership. All material published in **The Genie** is compiled and contributed by the members. Members and nonmembers of the Ark-La-Tex Genealogy Association may contribute material for publication in **The Genie** (*bible records, cemetery listings, diaries, wills, etc.*). Such contributions are appreciated and encouraged. Send material for publication to **The Genie** at the Association's mailing address. Material will be used at the discretion of the Editorial Review Board as space permits. We reserve the right to edit and/or condense material as needed. Submission deadlines are the last week before the first day of the month of quarterly publication.

The Association *exchanges periodicals* with other genealogical and historical organizations publishing data of general interest. These periodicals are then donated to the Broadmoor Branch *Genealogy* Section of the Shreve Memorial Library. We regret that we cannot exchange with limited family organizations. However, send samples of your publications for review. Since many publications possess information of value concerning families contain therein.

When *Cemetery Records* are submitted, include the name of the contributor, the copier, date copied and cemetery locations (such as road name or number, community, etc.) and also the Section, Township, and Range, if known. When *Bible Records* are submitted, give date and publisher of the Bible (if known), date copied, name of the contributor, name of present owner and the original owner.

Queries are free and encouraged. Please submit them typed or very plainly written. Space is limited. Please be brief and concise, using no more than 70 words per query. The editor reserves the right to edit or reject queries not suitable for publication.

The Genie cannot be responsible for errors or inaccuracies, but will hasten to publish corrections. Please read the material carefully and advise the Association in writing of corrections.

This publication is *indexed* in the Periodical Source Index published by the Allen County Public Library Foundation, Ft. Wayne, IN.

Copyright Laws

All who submit material from any source should be aware of copyright restrictions. When applicable, permission to use published material must be in writing and should be included when manuscript is submitted. Source and date of information used should be indicated.

The President's Message

These are exciting times for the Ark-La-Tex Genealogical Association. We must be doing something right, because we continue to move forward, which is a good thing because we are really working hard to do something of interest for each member.

Most recently, we were delighted to accept the ALTGA's Horn-Book Period introduced by the Educational Committee and presented each month during the regular meetings.

I can remember my first time I came to the Ark-La-Tex Genealogical Association meeting. It was new and exciting. I didn't know quite what to expect. I felt a little shy and uneasy, not quite knowing what to do. Yet, that didn't stop me. I was eager and knew that I had to do it. And, yes, I remember it all so well. How was it when you first came to an ALTGA's meeting?

Did you learn something new and got all charged up; ready to tackle new challenges in solving your family history perplexities. And for the first time, you were surrounded by a group of like-minded people who knew what you were experiencing. No longer feeling like an outsider, having to apologize or explain what you were doing and why you felt compelled to look for your roots. I found this association to be a group of friendly folks who were ready and willing to help me begin my quest to discover my family heritage. I know you did to! So we come back for another meeting, and then yet another. Now we realize we are hooked. So invite your friends to join the Association to have them experience these feelings that are alive and strong.

The Association wants to welcome our new members who have joined this year. Thank you for becoming a member. Look forward to seeing you at our meetings.

We know that doing genealogical research is an ongoing quest for new information and new sources to help us flesh out the lives of our ancestors. And, no one would disagree that the computer and the internet have dynamically changed the way we do research. But with it, we also need to change the way we approach our research. The paradigm has changed and we need to change with it. If you are not using the features of a *computer genealogy program*, it would be well worth the effort to learn how to do so AND to use it! Let me know your attitude about the computer and your research.

In an effort to keep the interest level up at our General Meetings, we are asking you, the members to suggest ideals, speakers and/or topics for our meetings. Let us know what states you are most interested in? Please feel free to contact Anne Wise (annewise@suddenlink.net). Your suggestions will be greatly appreciated.

The association recently announced new volunteers to work with the Board and Committees. They are: **Jim Johnson, Glenda E. Benard, June L. Scholes, and Betty M. McCabe**, thanks. We are looking for more members to eagerly respond to the on going growth of the Association.

Willie R. Griffin, President

UNIDENTIFIED BOSSIER PARISH BURIAL SITE

By Dale Jennings

It is hoped that this article might aid in confirming the identification of two burials that I unexpectedly learned of two years ago. In the early winter of 2005 I was doing research at the Cottage Grove Memorial Presbyterian Church Cemetery in north Bossier Parish. While checking tombstone inscriptions, an African American lady walked up the road across the fence from me and introduced herself. She was Geraldine White who lived within sight on the hillside across the road. A pleasant person, she said that she was just curious as to what I was doing. In our conversation, Geraldine asked if I knew anything about the little wrought iron fence containing two graves on the top of the hill above her house. She directed my attention to a cedar and small oak on top of the now bare hill, recently cut over for pulp wood. The little cemetery fence was located under the oak tree. Surprised that such a site existed, I went to the car for my copy of Cliff Cardin's book, "Bossier Parish Headstones." Cliff had painstakingly researched and recorded all the known parish burials of both races. No record of these burials could be found, even in his section entitled, "Unknown, Unfound, Destroyed and Unmarked Burials."

Geraldine White told me that she had not been up there in many years, and could not recall the names on the stones. However, her young son had gone up to the site recently and told her that the grave stones were now gone. She said that if I wanted to drop her off at her house and then walk up the hill to the site, I could do so. I climbed the hill and found a well preserved old wrought iron fence measuring about nine feet square. Inside the fenced enclosure was a heavy tombstone base with the customary two dowel holes made for the attachment of a substantial sized tombstone. Indeed, the grave markers were not to be found.

I soon returned to the hill top with a friend, Rodney Bellar. We probed the ground forward of the tombstone base. Under a few inches of dirt and leaves we found a massive marble slab that would have completely covered the area of a casket. Next to that slab – also just under the surface – we unearthed another considerably smaller one. Neither slab had an inscription. The small area of the fenced enclosure led to the belief that the fence was put up after a determination was made that no more burials would occur there.

The fence gate contained two clues that might reveal something about these burials. The raised lettering on the gate plaque was worn down and rusted, but the name appeared to read, "J.B. Bierns." Also on the gate was a metal tag with the wording, "Patented Jan 13, 1852 Reissued Sep 6, 1859. Hutchison Wickersham 312 Broadway, NY." Rodney, who is an excellent photographer, took some pictures of the site.

I have talked to a sister, brother and uncle of Geraldine White. All remember the gravestones, but none recall the inscribed names. The sister, Ann White, a very nice

lady of middle age, had just come back home after retiring from a career in Chicago. She told me that when she was a little girl their mother had died, leaving her widowed husband and nine young children. She related to me that upon the passing of her mother, she and a brother would go to the hill top to pray. She recalled identifying with the little girl whose first name on the smaller stone she could only remember as starting with an "M." T. A. "Bubba" Beauregard said that he had hunted in that area and remembered the cemetery fence and grave stones, but he too could not recall the names on the stones.

The identities of those resting on the hill near Cottage Grove might best be determined by tracing the ownership of the property. The first owner was Thomas Hunter of Natchitoches, a government surveyor and land speculator. He sold 640 acres, which included the burial site, to Edwin C. Andrews on December 20, 1858. As unlikely as it seems today, this area was then planted in cotton and corn. Good virgin top soil covered the hard-pan clay. On June 8, 1861, B. C. Rosborough wrote to another area resident, Doctor James Milling, then away from home. In commenting on the poor condition of the cotton crop, he told Milling that, "Shackelford says the Palmer field is not quite as bad as the Andrews field." (James S. Milling Papers, Bossier Parish Library Historical Center). Andrews and his in-laws, the Palmers and the Dicksons, had more lucrative planting operations on the Red River in Bossier and Caddo Parishes, but this hill tract was a much healthier place to live.

The 1890 "Biographical and Historical Memoirs of Northwest Louisiana" tells that a group of north Bossier Parish patriots organized the "mounted rifles of Bossier Parish" on December 10, 1860, the month before Louisiana seceded from the Union. E. C. Andrews was one of the company's lieutenants. The company was dissolved and Edwin C. Andrews later joined the "Vance Guards" and was elected first lieutenant. The company was accepted into State and then Confederate States service as Company A, 18th Louisiana Regiment. Andrews died of fever at Camp Moore near New Orleans on December 22, 1861, before his regiment left the state.

Mrs. Louise Dickson Cravens has done extensive research on her Dickson, Palmer, Sentell and related families. The Dicksons, Palmers and related Andrews were prominent planter families who came here from the old cultural center of Clinton in East Feliciana Parish, east of the Mississippi River above Baton Rouge. Mary Catherine Palmer Andrews petitioned the court in January 1862, saying that her husband, Edwin C. Andrews, had lately died leaving a child, "Palmer Elijah" Andrews. She requested that she be appointed natural tutrix to her minor son. The request was granted.

Mrs. Cravens says that the widow Andrews soon remarried to Doctor John D. Worthy, a Bossier Parish resident also from East Feliciana Parish, and that they returned to East Feliciana in about 1866. In 1878, Mrs. Worthy and her now adult son, "Palmer" ("E.P." Andrews in this subsequent deed) sold their Bossier Parish tract to James R. Cavett. Mrs. Cravens says that Palmer had a brother, "Clarence," who was born in about 1857 and probably died during the war. "Clarence" would not have been the youngster's complete name. It is possible that he may have had a first name such

as "Marion," which Ann White mistook for that of a girl. The Andrews family is not found in the 1860 census and no record can be found of where Edwin or little Clarence Andrews were buried.

Subsequent owners of the Andrews property were the Cavetts, Strayhans and Durbins. They are buried in the Cottage Grove Cemetery at the bottom of the hill. No useful information could be obtained from Cavett or Strayhan descendants. I was able to locate 97-year-old Harold J. Durbin in Tyler, Texas. He spent much of his youth on the family property there on that same hill. Mr. Durbin of course remembered the tombstones, but not the inscriptions. However, without any prompting he did recall that it was thought that a family named Andrews had once lived there.

Interestingly, about twenty years ago developers obtained a 46-acre tract of the Durbin land and registered a subdivision with the parish, which they called "Swindleville Estates." The name was taken from the little crossroads store location of "Swindleville" just east of there where Bossier Parish Road 160 crosses the Benton-Plain Dealing Road (Louisiana Highway 3). Lot 10 of Swindleville Estates plat contains the little cemetery where the Andrews family members are believed to be buried. The subdivision venture failed and the tract was sold at sheriff's sale. It was bought by Joey Allen, who still owns the property and is dedicated to protecting the burial site.

Any reader with information pertaining to the burials on the hill top overlooking the Cottage Grove Cemetery, or pertaining to the Edwin Andrews family, is asked to contact the "Genie" editor or the writer at 194 Vance Road, Benton, LA 71006, (318) 965-9342, or ligeni@bellsouth.net.



The writer standing at fenced burial site near Cottage Grove (Photo by Rodney Bellar)

ALTGA's Horn-Book: "Who were the Parents of Ida Van Norris?"

A brick wall problem submitted by member Anne Wise. Problem summary, analysis, and recommendations prepared by Glenda Bernard, Marilyn Christian, and Philip Adderley for presentation and discussion at the ALTGA General Session of 12 January 2008.

Ida Van [née Norris] Stuart, an ancestor of our member Anne Wise, died in Shreveport, Caddo Parish, Louisiana in 1948.¹ Her parents are presently unknown. Anne submitted for our consideration two vital records, one marriage record, one obituary, and two timelines—one that incorporates her census findings for a person she suspects to be Ida, and one for the Nanny Lee Hyden she suspects to be the unknown aunt that raised Ida. Our Education Committee presents to the membership our analysis of the submitted information and our recommendations.

Analysis of Submitted Information

Ida's death certificate and obituary² were recorded/reported no more than 1 day after her death. The informants were her husband and attending physician for the former, and possibly her husband or one of her children for the latter. Because one or more of these people were first hand witnesses, there is no reason to doubt the *death*-related information. On the other hand, there is little likelihood that any of the informants, or any of the relations mentioned in the obituary, had firsthand knowledge of her *birth*.³ The death certificate indicated that she was born 4 October 1887 at Summersat [sic], Kentucky with no county specified, and "Unknown" for her parents' names and their birthplaces. The writers thought it odd that a couple could be married for forty years and the surviving husband not know the names of either of his wife's parents. For completeness consider reasons less obvious than memory affected by time—that husband John may have withheld the information, for instance, or that Ida herself simply did not know who her parents were, for causes that further research might uncover.

In contradiction to the Kentucky birthplace, Ida's obituary noted that she was a "native of Oklahoma," but added nothing further with respect to her origins.

¹ Anne Wise, Caddo Parish, Louisiana, to Philip Adderley, email, 22 October 2007, digital image of Ida Van Stuart death certificate 2431484 (1948), Louisiana Vital Records Registry; privately held by Wise, Caddo Parish.

² Wise to Adderley, email, 22 October 2007, digital image of Ida Van Stuart obituary "Mrs. J. H. Stuart."

³ Firsthand knowledge is that gained as a witness to the event or object in question. Primary information is firsthand knowledge that is recorded *at or near the time of the event*. Secondary information is everything else. Ida's date of birth and birthplace thus far are considered secondary information.

Her marriage as “Miss Ida Van Norris” to John H. Stuart was conducted by a Justice of the Peace in Pulaski Co., Arkansas on 15 December 1908, and recorded the following month by the Clerk of Court.⁴ According to the marriage license, John was [a resident] of Fordyce, Dallas Co., Arkansas, and Ida was [a resident] of Okenishi, Oakfuska [*sic*] Co., Oklahoma [probably Okfuskee County]. She was listed as 21 years old on the 14th of December, which projects to a birth range of 15 December 1886 to 14 December 1887. This was consistent with the October 1887 birth in her death certificate; however, as a word of caution, no apparent older relatives of the bride were listed, so the information about her age was not likely based upon firsthand knowledge of her birth. Also, given (a) the wide separation of their recorded residences, (b) the absence of a family wedding in a religious setting for a first marriage, and (c) the bride’s presumed residence in central Oklahoma being far removed from the wedding site, a family tradition suggesting elopement merited consideration. Thus, we are open to the added possibility that her age on the marriage license was overstated.

The birth certificate of Ida’s 3rd child Ruth Lee Stuart noted her mother’s maiden name as Ida Van Norris, aged 25, with birthplace of Summer Set[,] Ky[.] with no county identified.⁵ Ida’s age and Ruth’s birth on 21 January 1913 infers that Ida was born 22 January 1887-21 January 1888. Neither John nor Ida, both listed on the birth certificate, had firsthand knowledge of Ida’s birth,⁶ and a specific informant was not identified, so the birth range for Ida was considered secondary information. Nevertheless, this range was also consistent with an October 1887 birth.

Ultimately we would like to find sources that recorded or reported her birth based upon *firsthand* knowledge. Although there are three sets of secondary information regarding Ida’s date of birth that are in rough agreement, her husband John may well have been the informant for all three records, which reduces the weight of the evidence. Therefore, we delay a making a firm conclusion until all other record sources are reasonably exhausted—and treat the composite range of 22 January-14 December 1887 as her possible date of birth. For her place of birth, candidates are Kentucky [*possibly* Pulaski County whose seat is Somerset] and Oklahoma.

Ida’s daughter Ruth recalled traveling with her mother to Shawnee, Pottawatomie Co., Oklahoma in 1940 to visit the unnamed aunt who raised Ida. Ida went into the house alone, and never spoke of the details, including the aunt’s

⁴ Wise to Adderley, email, 22 October 2007, digital image of John Stuart-Ida Van Norris marriage bond, license, and certificate (1908) from unspecified Pulaski County, Arkansas marriage book, page 481.

⁵ Wise to Adderley, email, 22 October 2007, digital image of Ruth Lee Stuart birth certificate 13 (1913), Caddo-Shreveport Health Unit, Division of Vital Statistics, Shreveport, Louisiana.

⁶ Note that no one has *firsthand* knowledge of his/her own birth.

name, again.⁷ Ruth and Ida were accompanied by Ida's husband John Stuart, and two of Ida's grandsons.

There could be many overlapping causes for the outcome of that visit. Although the results were apparently sad for Ida and/or her aunt, ironically they might help the research process. To do so, we ask, "If the causes for the sadness went beyond the spoken word (of Ida and her aunt), what types of related information might have been captured orally (by others), on paper, or in photographs that bracketed the fateful 1940 visit in time?" Some may have preceded and/or caused the situation beforehand, while others may have captured repercussions after the visit. On paper we would be searching for things such as (perhaps acrimonious) letters, newspaper articles (e.g., missing person accounts), police reports or arrests, civil or criminal suits, probate actions, guardianship proceedings, etc. We assume the cause(s) may have originated not just from actions initiated by Ida or her aunt, but also by any one related to them, married to them, living with them, etc.

Anne searched for candidates who might have been Ida's parents via United States censuses by looking for candidates (1) who might have been Ida and (2) who might have been her aunt.⁸ She submitted a timeline for each candidate merging information from censuses, the four documents above, and family traditions. We filtered and merged the key names and places into a separate document for her use and as a handout for the general session. Its length precludes publishing here.

Anne presently suspects that the unnamed aunt was Nanny Lee Hyden and that Nanny's sister Mary L. Hyden married Richard C. Norris, eventually becoming Ida's parents. Her research suggested first that Richard and Mary lived unmarried as minors in Norris and Hyden households of 1870 Cumberland Co., Kentucky, then as a married couple in 1880 Sebastian Co., Arkansas. If the census information was accurate, Nanny remained unmarried in the 1870-1880 Hyden households. At this point Richard and Mary's trail went cold.

Anne then picked up what she thought might be Ida's trail as a 13 year old servant (born in Texas), serving in immigrant Charles Hoffman's 1900 census household in Pottawatomie Co., Oklahoma, and living there with her possible aunt Nanny L. Morse, the housekeeper. Apparently this Nanny had previously married a Morse but was a widow by 1900. At some undetermined points in the first decade their paths diverged: in a 1910 Daniel Waddell census household of the same county, a wife Nanny—of similar background to 1900 Nanny Morse—appeared. If the census information was accurate, she had married Waddell in 1901-1902. Sometime

⁷ Wise to Adderley, email, 22 October 2007, attached timeline composed by Ms. Wise referenced an interview of Ruth Lee [née Stuart] Simmons.

⁸ Wise to Adderley, email, 22 October 2007, attached timeline composed by Ms. Wise referenced numerous U. S. population schedules. Due to the length of this article, census citations will be provided only upon request.

in or before 1908, however, an Ida Van Norris of Okfuskee County left Oklahoma—perhaps eloping to do so—when she married John H. Stuart in Pulaski Co., Arkansas.

Nanny Waddell's census trail through the 1910, 1920 and 1930 U. S. population schedules led to her brother James M. Hyden's 1930 household, her husband Daniel having died presumably in the 1920s. From that point on she apparently stayed with James and later James' daughter Lottie Jewel Hyden, who had subsequently married a Henderson. Their move from Pottawatomie Co. to Osage Co., Oklahoma probably occurred between 1930 and Nanny's reported death there in 1945. However, if Nanny Waddell was in fact the aunt visited by Ida in 1940 in Pottawatomie Co., Oklahoma, Nanny's move to Osage County probably occurred in a much smaller window: 1940-1945.

Ida's trail was simpler. After her first child Mary Oneita Stuart was born in Arkansas, John and she moved their family to Shreveport, sometime between 1911-1912, where they remained. Some of their eight surviving children remained locally, while some migrated with subsequent spouses to other states.

Our analysis of the information from Anne's census population schedule research indicates that the Nanny Lee Hyden of the 1870 and 1880 Hiram Hyden households is at least *one* candidate for a match with the 1900 Nanny L. Morse. We believe that 1900 Nanny Morse is at least *one* good candidate for a match with the 1910-20-30 Nanny Waddell (and variant spellings). We have higher expectations that the 1930 Nanny Waddill is the same person who died in Osage Co., Oklahoma while living with her niece Lottie J. Henderson. Whether any of the Nannys uncovered by Anne is the actual person visited by Ida in 1940 remains an open question.

For Ida we suspect that only part of the census research trail, that which extends backward in time to the 1900 Hoffman household, has a chance of being verified. A possible link between the 1900 Ida and the Richard Norris household of 1880 Sebastian Co., Arkansas is far less likely and requires the alignment of many presumptions, of which two stand out:

- One presumption is that Nanny Lee Hyden, and only Nanny, is the aunt who raised Ida. Rather, we suggest she be considered *one* of possibly several candidates. Others include remaining maternal aunt Amanda Hyden, paternal aunts presently unknown, great aunts from any of her four grandparent's households, and even unrelated women close enough to Ida to be thought of as "aunts" by her in her lifetime.
- Second, for Ida's possible place of birth in Pulaski Co., Kentucky to be accurate, Richard Norris—or at least his surviving spouse—would have had to relocate from 1880 Sebastian Co., Arkansas, located on the western state line, back to south central Kentucky sometime before Ida's birth. Reverse migration to their origins certainly could have happened between 1880 and 1887 via the Arkansas,

Mississippi, Ohio, and Cumberland Rivers, but in this case their 1870 location was Cumberland vs. Pulaski County, Kentucky, two counties further upriver.

We also have great interest in the origin of Ida's middle name Van. Was it truly a middle name or considered part of the surname? If the former, was Van was the maiden name of Ida's mother or either of her grandmothers? If the latter, did it evolve from an earlier surname such as Van Hyden or Van Der Hyden?

Our recommendations are grounded on the Genealogical Proof Standard. In this remainder of this article, we propose the groundwork for its first step—a reasonably exhaustive search for reliable information sources. To adequately distinguish and prove the identity and kinship of the right Ida Van Norris and her actual parents may require non-traditional approaches. For example, if more than one Ida Van Norris surface in the search, the researcher may be able to *rule out all but one* candidate through analysis, should the information not directly, reliably, and positively identify her. Likewise for each parent. Doing so may require unusual search methodology, with a focus on people and places that may seem to have nothing to do with Ida Van Norris or her prospective parents. The recommendations given here go to that length. They are by no means complete, but we feel they offer a good start. We include *what, where, when*, and to a limited extent *why*. For *how*, consider (a) a bevy of excellent reference tools, foremost of which would be *The Source*,⁹ and (b) the members of our association.

Recommendations for Further Research

For each record group that follows, we recommend preparing a research log that uses the master table placed at the end of this report. Repeat the table for each record category. Add columns for new places to be searched, and add rows for newly identified search candidates. A spreadsheet might be a useful tool for this.

Interviews: The writers presume that interviews of all living people having any connection or possible blood relationship with Ida been interviewed before now.

Vital Records: The following *assume* that civil records for births, marriages, and deaths exist for the times and places noted. In some instances they will not. For specific county by county breakdowns, consult *The Redbook*¹⁰ or *The Handybook for Genealogists*¹¹ to determine the full extent of surviving civil records. After locating

⁹ Sandra Hargreaves Luebking and Loretto Dennis Szucs, editors, *The Source: A Guidebook to American Genealogy*, 3rd ed. (Provo, Utah: Ancestry, 2006).

¹⁰ Alice Eichholz, editor, *The Redbook: American State, County, and Town Sources*, 3rd ed. (Provo, Utah: Ancestry Publishing, 2004).

¹¹ *The Handybook for Genealogists: United States of America*, 10th ed. (Draper, Utah: Everton Publishers, 2002).

any surviving records, carefully note the names of all informants, witnesses, attending physicians, ministers, court officials, etc. for possible use/research in other record categories.

- **Birth Records:** Information is generally reliable if given by someone with firsthand knowledge who had no motive to deceive or distort or withhold portions of it.
 1. Search for a birth record for Ida in Kentucky. Although the 1900 census record for one candidate who might be Ida showed a birthplace of Texas, we determined that there was also a Texas precinct in Pulaski County, Kentucky in 1890. If she were an orphan and the informant for her census information, she may have made up time and place of birth, or imperfectly recalled her origins.
 2. Need birth certificates for all of Ida's children.
 3. Search for birth records for members of the 1870-1880 Hiram Hyden households, in Cumberland Co., Kentucky.
 4. Search for birth records for names including Van, Vann, Vaughn in Pulaski County, Kentucky, 1860-1890.
 5. Search for birth records for Norris families in Pulaski County and Cumberland County, Kentucky, 1860-1890.
 6. Look for births in Okfuskee County, Oklahoma (Ida's residence on marriage license), for names including Norris, Van and Hyden, 1880-1890.

- **Death Records:** Considered a primary source of death-related information because of the short time between the event and the recording of the facts, and informants who probably witnessed the death and/or funeral. However, treat place and date of birth of the deceased as well as the names of the deceased's parents and their places of birth as secondary information unless the informant actually witnessed their births.
 1. Search for death record for Nannie Waddill in Osage County, Oklahoma, ca. 1945.
 2. Search for death record for Charles Hoffman in Oklahoma in or after 1900; Morse in Oklahoma or Arkansas prior to 1900, Daniel Waddell in Pottawatomie Co., Oklahoma 1920-1930, and James M. Hyden in Oklahoma after 1930. The information may be useful for subsequent research recommendations involving any of these men.
 3. Search death records for names of Van, Vann, Vaughn in Pulaski County, Kentucky, 1870-1890.
 4. Search for death records for Norris and Hyden families in Pulaski and Cumberland Counties, Kentucky, 1860-1890; Sebastian County, Arkansas, 1880-1890; and Okfuskee County, Oklahoma, 1885-1910.

- **Marriage Records:** This civil record is generally considered primary information because the preliminary requirements were usually recorded shortly before the event, and, if the marriage actually went forward, it was certified and/or recorded shortly after the event. All listed names were witnesses to one or perhaps all parts of the complete event/entry.

Information showing the couple's full names, especially the bride's maiden name, residence and age is valuable for tracing the bride's family. Witnesses and sureties were likely to be closely related to either the groom or bride's family—note the surety W. T. Gattis on John Stuart's Bond within Ida's 1908 marriage record.

1. Need marriage record for Nanny Hyden to [--?--] Morse before 1900, possibly in Pottawatomie Co., Oklahoma or Sebastian Co., Arkansas.
2. Need marriage record for Nanny Hyden to Daniel Waddell 1901-1902, possibly in Pottawatomie Co., Oklahoma. A candidate record for that marriage might be Daniel Beaver Waddell and Nancy Morse on 6 August 1902.
3. Search marriage records for Hiram Hyden, before 1870, possibly in Cumberland Co., Kentucky. A candidate for that marriage might be Hiram Hyden and Rebecca Emeline Wade on 22 December 1853 in Clinton County, Kentucky.

Newspapers: Of prime interest are obituaries and funeral notices, both of which may have been published for a given person. These records can give information on date and place of death, cause of death and burial information. The names of surviving and deceased relatives, such as parents and siblings, are usually listed. A biography may be included which might support (or cast doubt upon) previous research.

Also of interest are any articles or legal notices that might shed light on the causes of the apparent rift between Ida and her aunt, and of the Okfuskee Co., Oklahoma residence in Ida's marriage license.

1. Search for obituaries and funeral notices for Richard C., Mary L., and Sanford B. Norris in Pulaski County, Kentucky, and Sebastian Co., Arkansas, 1880-1890.
2. Search for obituaries and funeral notices for surnames Norris, Hyden, and Van (also Vaughn or Van) in Sebastian County, Arkansas, 1880-1890; and Pottawatomie and Okfuskee counties in Oklahoma, 1885-1910.
3. Locate obituary and funeral notice for Nannie Waddill/Waddell in Osage County, Oklahoma, ca. 1945, and her prospective husbands Daniel Waddell, 1920-1930, Pottawatomie Co., Oklahoma; and Morse in or before 1900, in Pottawatomie Co., Oklahoma and Sebastian Co., Arkansas.
4. Locate obituaries and funeral notices for deceased children of John and Ida Stuart for any references to Ida's parents, siblings, or ancestors.
5. Search surviving 1900-1910 newspapers in at least Okfuskee Co., Oklahoma and Pottawatomie Co., Oklahoma, and any major city near these counties for any articles, ads, and legal notices mentioning Ida or any of her prospective relatives, step-parents, and guardians. Extend the search forward into 1910-1940 Pottawatomie Co., Oklahoma region if the earlier search is unfruitful.

Tax Rolls: Information in various tax lists provides name and residence of the tax payer, value of real estate owned, and the number of men over 21 living in the same household. Tax rolls can show the types and values of an ancestor's farm products

and livestock. They can often give clues to the movement of an ancestor from one part of the country to another, the death of a taxpayer, and the reaching of age of majority. Rolls to check include; Real Estate Tax, Poll Tax, Personal Property Tax and Inheritance Tax. A careful year to year use of tax records can be especially useful as a census substitute, not just for the United States 1890 Census in this case, but also for censuses in which the surviving schedules are now difficult to read, and for all years in which a census was not taken!

1. Examine all surviving tax rolls and extract/analyze all Norris, Hyden, and Van entries in Cumberland and Pulaski Counties, Kentucky, 1860-1890; Sebastian County, Arkansas, 1870-1890; and Okfuskee and Pottawatomie Counties, Oklahoma, 1900-1910.

Census Records: Census records are often initial genealogical records to research. Migrations across the country can sometimes be traced for the entire lifetime of an individual. Since various families traveled together at times, also look for nearby family connections on the census schedules. Various relatives may also have returned to live with their descendants in later years.

1. All census records should be exhausted for the following names: Van, Norris, Hyden, and derivations, misspellings, etc.
2. Check all applicable census schedules such as agricultural, mortality, state census (there are none for KY) and school census for all three names.
3. Locate Sanford B. Norris if Nannie L. Morse is the aunt of Ida.
4. Research Mary L., Amanda and James M. Hyden more thoroughly if Nannie L. is the aunt.
5. Search the census in 1910-1930 for John Stuart household.
6. Request 1940 census from National Archives for John Stuart household.
7. Search the 1930 census schedules for any of John & Ida's children that were living in households separate from their parents.

Church Records: Church records can be vital to genealogical research, especially if civil records are lacking. If the church or synagogue is still active, historical records may well be housed there. If the facility no longer exists, state affiliations may have filmed older records or can direct one to the closest colleges or universities that may house records.

1. Check the records of Ingleside Baptist Church, Shreveport, LA.
2. Research Baptist church records in Pulaski Co., KY, Okfuskee Co., OK, Sebastian Co., AR.

Guardianships: Considering past limitations for women's rights, guardianships were filed upon the death of a father with a surviving spouse. These might be found in separate filings, in probate records or with other court records. Since the parents of Ida Van Norris are in question, guardianship data could be very revealing in this

case. Guardianships were often court-monitored processes and not just one-time appointments, so the case files may extend over several years.

1. Search for guardianship records of Ida Van Norris, possible guardians being James M. Hyden, Nannie Lee Hyden Morse Waddil/Waddell, (and/or her husbands) and Charles Hoffman.
2. Guardianship for Ida may have changed over time. It may have started with a grandfather or other blood relation earlier, then changed to perhaps one of the candidates in the previous paragraph. Therefore closely examine any guardianship case files associated with the surnames Van, Hyden, or Norris in the prospective counties where Ida may have resided, (including Caddo Parish).
3. In some instances, the court may have appointed a "guardian" in addition to her surviving mother, if there was one, for a specific purpose while Ida was a minor, somewhat equivalent to what today we would call a Specific Power of Attorney. An example might be a male appointed to handle legal proceedings in another state on behalf of Ida.

Probate Records: Fundamentally, we can learn of relationships and personal bonds of friendship or affection that extended beyond a person's lifetime through probate records. Records of the Probate Court extended *beyond* estates and heirs. Therefore it would be of great interest to see probate records for any of the following groups of people. To prevent missing someone, assume they fit one of these characteristics unless ruled out via other evidence.

1. Any person who might be Ida's ancestors (say, up to grandparents, i.e. within the next two generations, their siblings, and all spouses. In-laws are included because, for example, they might have been given life interest in a property with the provision that upon their deaths the property passes to Ida. For instance, James M. Hyden is a possible uncle and his probate record should be searched. James' wife, though unrelated and presently unknown, may also have been one of Ida's benefactors.
2. Any person who is presumably connected with Ida's past who may have been her guardian, step-parent, or adoptive parent (whether legally adopted or not). Therefore, consider placing Charles Hoffman, and the husbands of any prospective aunt in this group, such as Daniel Waddell, [-?--] Morse, etc.
3. Any person of surname Van, Norris, and Hyden who lived in the same time and place as did the various candidates for Ida Van Norris.
4. Husband John and any child of John and Ida. Here, we do not want to miss the possibility that some benefactor may have made a bequest that skipped Ida and went directly to one or more children. They in turn may have mentioned unusual benevolences or special family relationships in their own wills.
5. Child Labor Affidavits for Ida prior to 1910 in Okfuskee and Pottawatomie Co., Oklahoma; and Pulaski Co., Kentucky. [May be in Probate, Circuit, County, or Chancery Court records.]

Land Records: Land records are arguably considered the most important research tool in genealogy today, for reasons too lengthy to discuss here. Not all people left

estates or wills, but many people appeared in land records land over time. Importantly, one did not have to own land to be captured in a land record. Witnessing land transactions, sharecropping, renting a farm, attempting to homestead, loaning money as a creditor, etc. are all instances where a single acre need not be owned.

We are not only interested in all transactions captured in conveyance/deed books but also all mortgage book activity, volumes containing livestock brands and marks, acquisitions of land from the United States (especially Homestead attempts) and state governments, etc. If an original deed or land entry file is available it should be used. *Initially*, the groups of people to research are

1. Land acquired from the State of Kentucky, and all land transactions involving any Van, Norris, and Hyden in Cumberland Co., Kentucky and Pulaski Co., Kentucky, 1860-1890.
2. Any of Ida's prospective male ancestors, and any prospective female ancestors having separate property interests, wherever they resided or conducted business.
3. Estate administrators and prospective guardians, wherever they resided, and wherever lands existed that were owned or controlled by them.
4. U. S. land entry files (especially Homestead) and state land acquisitions for any Van, Norris, or Hyden in townships covering the six counties noted in Arkansas, Oklahoma, Louisiana, as they were variously defined in 1870-1910.
5. Any of Ida's prospective aunts' husbands, wherever they resided or conducted business.
6. Neighbors of Ida and prospective ancestors.

Court Records: (Guardianship actions treated separately). All civil and criminal suits in which Ida and her prospective aunts were a party are of first focus, but in reality anyone who interacted directly or indirectly with Ida or her prospective aunts may have referred to Ida or her ancestors during the course of a suit. When examining the cases, it is very important to go beyond court minute or order books and look directly at the court case files if they survived. The most efficient approach is to work backward in time.

1. Trial court level cases in Caddo Parish, Louisiana; the counties of Osage, Pottawatomie, & Okfuskee, Oklahoma; Sebastian & Dallas, Arkansas; and Pulaski & Cumberland, Kentucky. Trial court level cases include district and parish courts for Caddo Parish, and both circuit and chancery courts for counties in the other states. Criminal court proceedings for both state and federal trial courts may be separately indexed and housed. Federal trial courts for regions covering the counties of interest may be seated in a different county. Initially focus upon:
 - a. Surnames Van, Hyden and Norris.
 - b. Administrators of estates, business partners, creditors, and neighbors associated with Ida, her prospective aunts, and their husbands.
 - c. Ida's known or prospective guardians.
2. All appellate cases involving Ida, and her known and prospective relatives using a library or legal subscription service such as Westlaw®.

Government/Legislative Records: State legislatures and the United States Congress passed not just the public acts that we are most familiar with, but also private acts that uniquely affected individuals. This was particularly true for unusual cases that existing laws did not adequately cover, or did not cover at all. Divorces, for example, may have been granted by legislatures.

1. Examine the session law created year by year by the following state legislatures looking for acts for private relief affecting Ida and any prospective aunts and relatives:
 - a. Louisiana, 1910-1945.
 - b. Oklahoma from statehood through 1920.
 - c. Arkansas, 1870-1910.
 - d. Kentucky, 1860-1890.
2. Examine the United States Statutes at Large for similar acts of private relief.
3. Examine any claims filed against the United States following the Civil War. The Southern Claims Commission would be a starting point. Surnames Van, Norris and Hyden are of interest, particularly for the states of Kentucky and Arkansas.

Directories: If Ida and her prospective aunts and ancestors lived in or near cities large enough to be captured in [surviving] city directories, these should all be examined in time frames that bracket their suspected presences. The earliest uses of telephones were often captured within city directories before being published in separate directories as the 20th Century progressed. Counties at various time also published their own directories. The surnames of interest are Norris, Hyden, and Van, but neighbors' names are important for subsequent research in other categories. The first step is to determine what types of directories survived for cities and counties in the states of Louisiana, Oklahoma, Arkansas, and Kentucky. Then use the time brackets listed under the government/legislative records category to search for the surnames. Of particular interest are telephone, city, and county directories for Shawnee, Pottawatomie Co., Oklahoma, in the 10 years centered upon Ida's 1940 visit to her unnamed aunt.

Other Record Categories: There are a host of other record sources that should be considered at some point. We list them here in an effort to be as complete as possible.

1. Military
 - a. Prospective brothers, fathers, uncles, grandfathers
 - b. Males guardians & step-fathers
2. Immigration
3. Business, Institution, & Organization Records
4. Published or Privately Printed Sources, in print or via the Internet
5. Archival Collections

Table 1. Master Research Log (repeat for each record category)

Name\Location	Record Category:							
	Caddo Parish, Louisiana	Dallas Co., Arkansas	Osage Co., Oklahoma	Okfuskee Co, Oklahoma	Pottawatomie Co., Oklahoma	Sebastian Co., Arkansas	Pulaski Co., Kentucky	Cumberland Co., Kentucky
Surname Norris								
Surname Van								
Surname Hyden								
Additional Surnames of interest, 1 row each.								
Ida Van Norris of 1908-1948								
Ida Van Norris of 1900 Pottawatomie Co., Oklahoma								
Ida Van Norris of 1887 Pulaski Co., Kentucky.								
John H. Stuart								
9 rows, 1 for each of Ida's children								
Prospective fathers of Ida Van Norris (<u>add a row as each different prospect becomes identified</u>)								
Prospective mothers of Ida Van Norris . . .								
Prospective aunts of Ida Van Norris (Nanny, Amanda)								
Lottie Jewel Hyden								
Prospective uncles of Ida Van Norris (James M. Hyden)								
Hiram Hyden								
Hiram Hyden's wives (1 row each)								
Daniel Waddell								
[----] Morse								
Charles Hoffman								
W. T. Gattis								

Exchange Periodical Review

Compiled by Constance Whatley

Many of the periodicals we receive, in exchange for "The Genie", provide up-to-date ideas on how to solve your research challenges. Always search the periodical published in your geographical interest area, but don't overlook other periodicals that may include articles of general interest to the researcher or about families that have migrated. These periodicals are located at the Shreve Memorial Library, Broadmoor Branch, Genealogy Section, 1212 Captain Shreve Drive, Shreveport, LA 71105.

Topeka Genealogical Society Quarterly, Topeka, Kansas, Volume 37, Number 2, April 2007, pages 60-61, has an article on DOWSING FOR UNMARKED GRAVES. This article lists two internet sites for additional articles on this topic. Who knows, this may be an undiscovered resource for some person(s).

Secondly, page 73, is a chart compiled by Charles Bumstead, LDS Church, Kearney, MO showing the type of record to select when searching for unknown data, e.g. maiden name, divorce, etc.

Seattle Genealogical Society Bulletin, Volume 56, Number 2, Spring 2007, pages 52-53, is an article entitled: Full Text Genealogy Books available on Google. This may be of help to someone needing access to out of print or rare books. Microsoft has recently launched a test version of "Live Search Books" which is reported simple; but the search results are not nearly as accurate as that of Google Book.

Virginia Appalachian Notes, Volume 32, Number 4, Fall 2007, published by Southwest Virginia Genealogical Society, pages 197-203 lists death records for Botetourt County dating from 1793 to 1913.

The Louisiana Genealogical Register, Volume LIV, Number 4, December 2007, published by the Louisiana Genealogical and Historical Society provides some interesting information:

1. An article by Trevor K. Plante entitled "An Overview of Records at the National Archives Relating to Military Service." Mr. Plante is an archivist in the Old Military and Civil Records Unit of the National Archives and Records Administration. He specializes in military records prior to World War II.
2. On pages 317-330 are the 1912 Calcasieu Parish Masonic Membership which covers 15 towns.
3. Two World Wide Web Sites of interest are: www.barbadosancestors.com and www.irish-roots.net found on page 380.
4. A listing of old occupations found in public records and the census will be found on pages 387-398.

Our Heritage, Volume 29, Number 1, February 2008, published by the Van Zandt County Genealogical Association, Texas, page 7, is an article that may be helpful for German researchers. The title is, "Different Calendar Systems."

The Ark Valley Crossroads, Volume 19, Number 1, January 2008, published by the Wichita Genealogical Society, Kansas, pages 17-22 list Scandinavian Immigrants to the counties of Jackson, Shawnee and Wabaunsee from 1869 to 1903.

Searchers & Researchers, Volume XXX, Issue 4, winter 2007, published by Ellis County Genealogical Society, Waxahachie, Texas, pages 25-30 lists slaves of Ellis County on the 1850 census. Also included is an interesting article about Dr. C. A. Harris, an outstanding pastor and physician.

The Northeast Mississippi Historical & Genealogical Society Quarterly, Volume XXVIII, Number 2, December 2007, pages 77 & 78 lists 34 websites of interest to persons researching in Northeast Mississippi.

Austin Genealogical Society Quarterly, Volume 48, Number 3/4, Fall/Winter 2007 Of Austin, Texas, pages 116-121 gives an article entitled "Researching African American Ancestry by Karen J. Matheson, web address is kjmatheson@austin.rr.com.

2008 Membership Renewal

Membership dues for the calendar year 2008 are now due. If you have not yet remitted your dues, we urge you to do so. The grace period began January 1, 2008 for dues renewal payment.

An application for renewal was enclosed in the last Genie. It is very important that you complete this form and mail it with your remittance.

Make you check or money order payable to the Ark-La-Tex Genealogical Association and mail to: Post Office Box 4463, Shreveport, LA 71134-0463.

If you have sent your check without the completed application, please fill it out and send it or bring it to the next monthly meeting. Thanks.

Ark-La-Tex – Committees

The programs of the **Ark-La-Tex Genealogical Association** are administered by committees operating under the Board of Directors and at the pleasure of the president.

A committee is a group of volunteers [someone who does something voluntarily or someone who has freely offered to serve], or someone appointed or chosen to perform a function on behalf of a large group. Committees often serve several different functions.

The public often does not see members at work in committee meetings therefore do not really know what each does. Few members know about the committees which are at the core of the functioning structures of the Association.

What most people do not know is that by the time members of a committee speak in the regular meetings, most of the discussions and decisions would have already been made in committees.

According to the By-Laws of the **Ark-La-Tex Genealogical Association** the following committees are Standing Committees:

ARTICLE XII COMMITTEES p. 8

Section 1. The President shall appoint, with approval of the Board of Directors, the following standing committees.

a. Education Committee: This committee shall consist of a chairman and not less than two other members. Its function is to develop course outlines and other materials to be used in training classes.

b. Finance Committee: This committee shall consist of a chairman and not less than four other members. Included in this membership shall be the Treasurer and the immediate past president (if available). It shall have general supervision of the finances of the Association. It shall prepare the annual budget. The budget shall be presented to the board of directors at their regular January meeting, and to the membership at the regular meeting in February.

c. Library Committee: This committee shall consist of a chairman and not less than two other members. It shall have general supervision of all books, magazines and other printed material belonging to the Association, including resale items. It shall serve as the conduit for books received, reviewed and passed-on to Shreve Memorial Library.

d. Program Committee: This committee shall consist of a chairman and no less than two other members. It shall be responsible for developing programs for regular meetings, and such other events as may be approved by the board of directors.

e. Publications Committee: This committee shall consist of a chairman, normally the Editor and no less than two other members. It shall be responsible for the functions relative to the production of association publications. It shall supervise the publications exchange program with other organizations.

f. Publicity Committee: This committee shall consist of a chairman and no less than two other members. The committee shall see that the association receives adequate publicity in the local media, and elsewhere.

[Committee Chairs are responsible for developing a plan which will detail how the committee will carry out its responsibilities. Plans should be submitted to the Board of Directors.]

Committees are a necessary aspect of organizations of any significant size (say, more than 15 or 20 people). They give members that participant an opportunity to speak without feeling left out with larger groups; since discussions are quite lengthy many participants find the meetings duplicative and often boring.

Committees are a way to formally draw together people of relevant expertise from different parts of an association that otherwise would not have a good way to share information and coordinate actions. They may have the advantage of widening viewpoints and sharing out responsibilities.

Are you that someone who does something voluntarily or someone who will freely offered to serve on a COMMITTEE of the Ark-La-Tex Genealogical Association? If so, let the President know.

New Members

The Association wants to welcome our new members who have joined this year. Thank you for becoming a member. Look forward to seeing you at our next meeting.

In Memory of A Deceased Member

Mrs. Lena Ford Cowan

Private Family Graveside Services for Mrs. Lena Ford Cowan, 90, of West Monroe, LA were held at the Twin Cities Memorial Gardens in West Monroe, LA with Rev. Mike Haney officiating under the direction of Mulhearn Funeral Home West Monroe, LA. Mrs. Cowan is preceded in death by her husband, Paul E. Cowan Jr. and by her parents, William D. and Pearl Ford. She was retired from the Arizona Trust Co. in Tucson, AZ. Survivors include her niece, Billye F. Griffin; great niece, Janet Gross; great nephew, Jim Griffin Jr. and great great niece, Jennifer Doucet. *Mulhearn Funeral Home: www.mulhearnfuneralhome.com*

April 20, 2007 - Obituaries from the News-Star, Monroe, Louisiana 71201

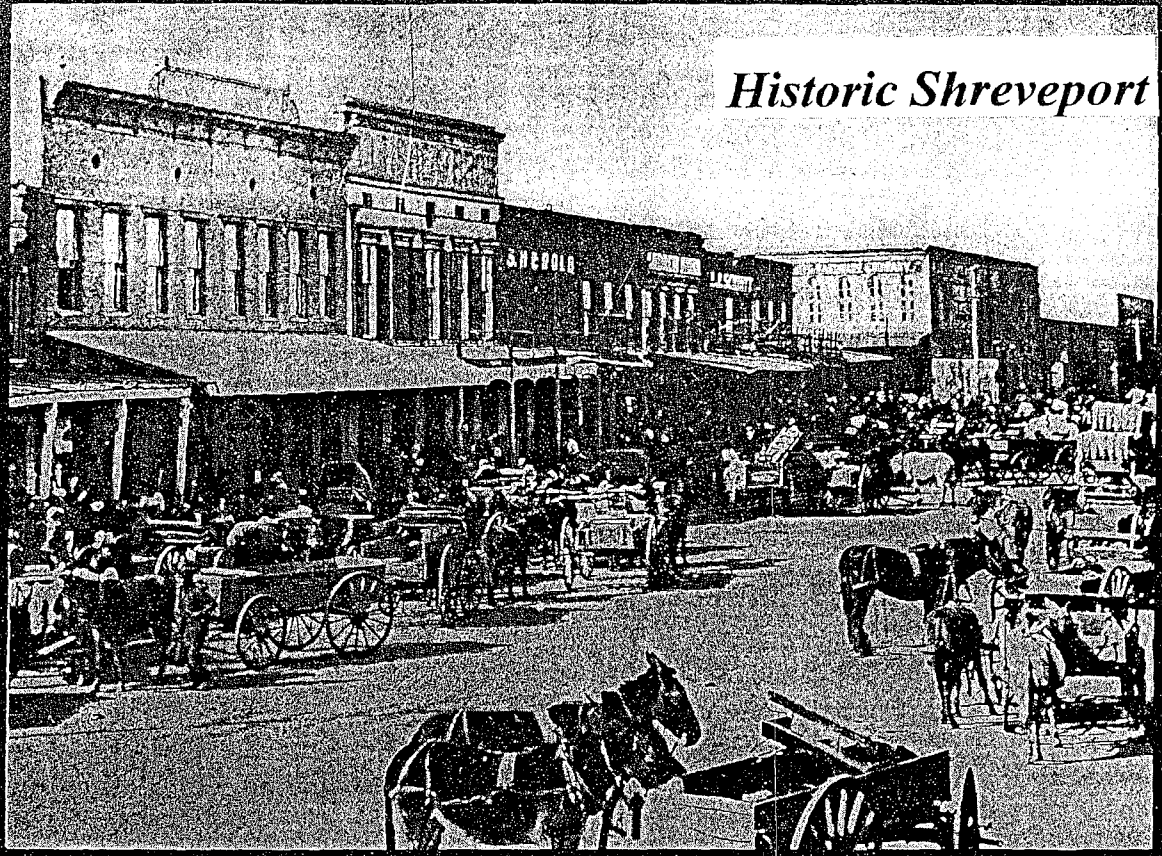
Does ALTGA Have Your Correct Address?

To comply with Post Office requirements, we must periodically check and certify our mailing list.

Please look at the label on this Genie. Is your address correct? Does it include the nine-digit zip code? If your address is not correct, please notify Herman Weiland at ALTGA, P.O. Box 4463, Shreveport, LA 71134-0463

If your mailing address changes during the year, please notify the ALTGA immediately, as we are required to pay full postage for all returned quarterlies.

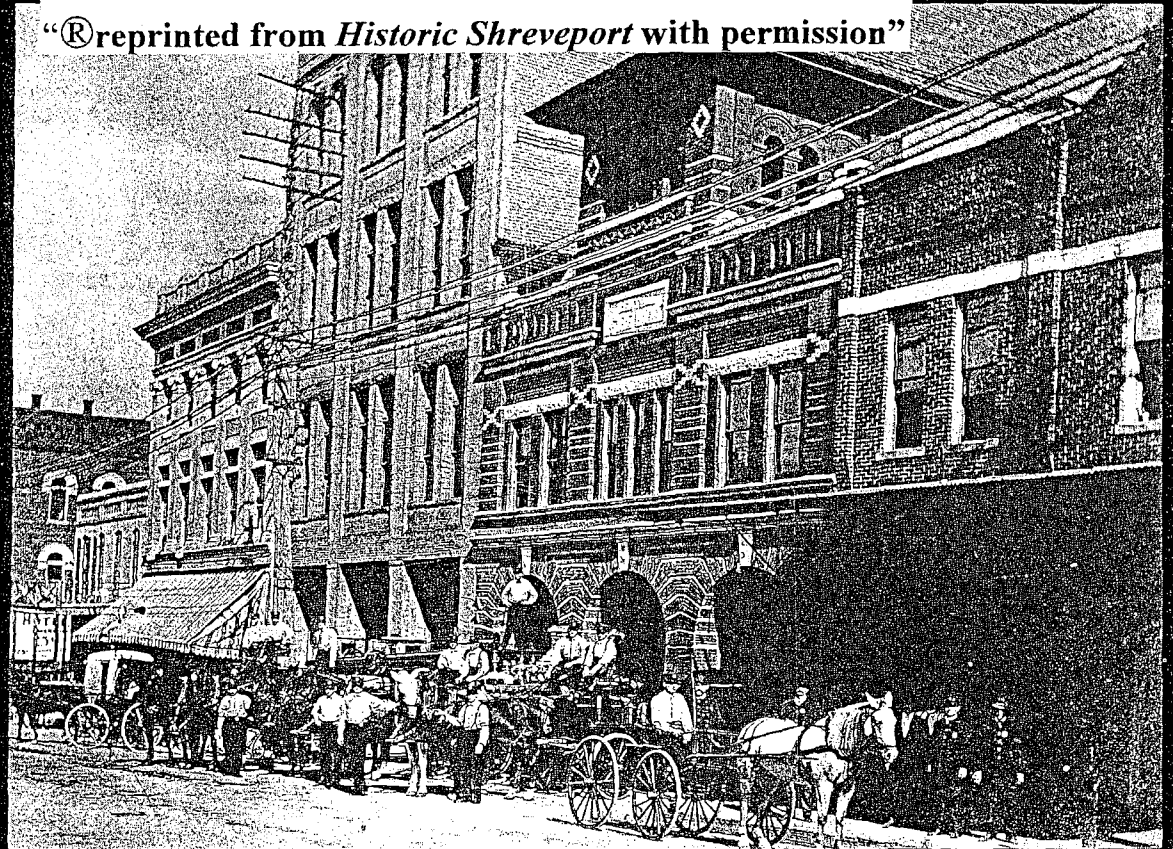
Traffic jam on Commerce Street, 1903.



Historic Shreveport

GRABILL STUDIO

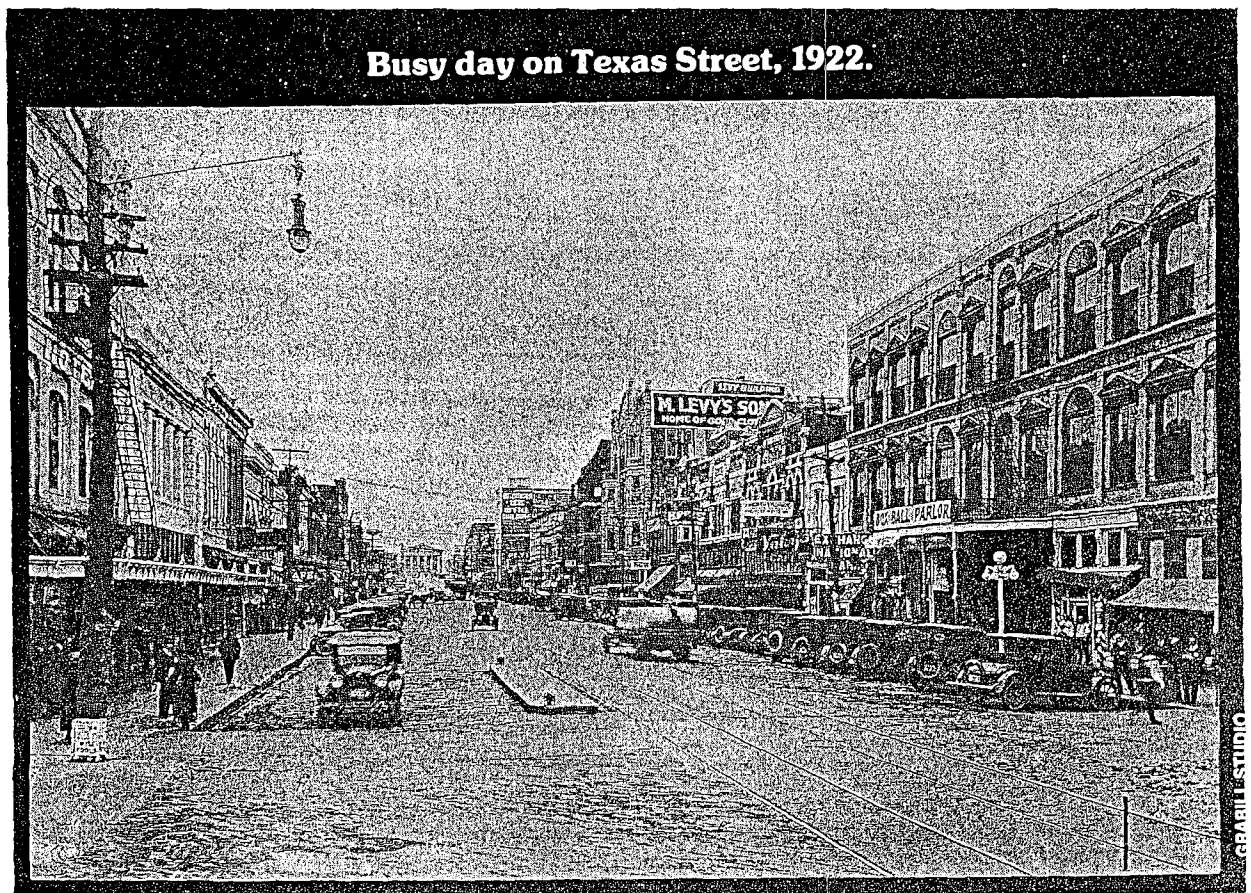
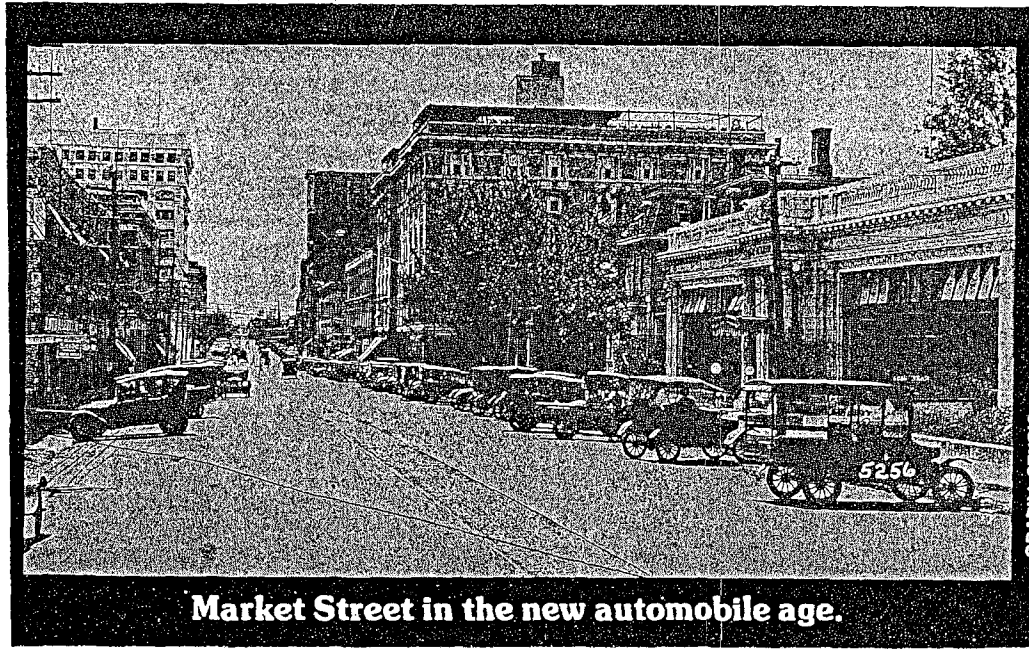
“©reprinted from *Historic Shreveport* with permission”



GRABILL STUDIO

Old Central Fire Hall on Milam Street.

Historic Shreveport



“®reprinted from *Historic Shreveport* with permission”

Beginners' Genealogy Class

**Sponsored By the
Ark-La-Tex Genealogical Association**

Saturday, the 17th of May 2008

9:30 AM to 4:30 PM

At

**Shreve Memorial Library
Broadmoor Branch
1212 Captain Shreve Drive
Shreveport, LA 71105**



Topics will include:

- *Basic and Critical Genealogical Forms*
- *The Federal Census of the United States*
- *An Intro to Evidence Analysis & Source Citations*
 - *How to Conduct an Oral Interview*
- *Searching the Internet for Genealogical Information*

Make plans to attend this year's Beginners' Class!!

Pedigree Charts and Family Group Sheets

Both the Pedigree Charts and the Family Group Sheets are your personal road maps to your family history, worksheets to show you how much information you have on your ancestors and how much more there is to discover. The reason for having both in standardize form is so that later you can exchange them with other members of your expanded family – and they'll be able to understand what you've done.

How to Fill Out the Pedigree Charts

1. The Pedigree Chart will give you at a glance the names, births, marriages, and deaths of four generations of direct ancestors. If you have a five-generation pedigree chart, then the fifth generation is shown by name only, but each fifth-generation name is repeated as the first generation on the next consecutively number Pedigree Chart of the line. In that way, you can extend any family surname back as far as you are able to and the numbering system will be simply to follow.
2. Record each person's full name, capitalizing the entire surname. For example, KELLY, David.
3. Record the day, then month, then year, like this: 23 Nov., 1910.
4. Always record the smallest geographical area first: Magnolia City, Columbia County, Arkansas, becomes Magnolia City, Columbia, AR. Use standard Postal Service abbreviations for states, but do not abbreviate cities or counties (parishes).
5. Any information such as a birthdate which is in doubt should be followed by a question mark in parentheses.

How to Fill Out the Family Group Sheets

A Family Group Sheet should be started for the marriage or marriages of every person shown on your Pedigree Chart. If your great-grandfather went to the alter five (5) times, then he should have five separate sheets. (As you go back farther into your past, you'll find a number of men and women who were married more than once. In those days wives frequently faded after eleven children and husbands collapsed under back-breaking work.)

Here are a few guidelines to help you complete neat, consistent Family Group Sheets:

1. Record names, dates, and places in the same way you did on your Pedigree Chart.
2. Initials (if you do not know the full name) should be placed in quotation marks. For example, HARTWELL, Frank "J."
3. All uncommon first names - such as Evelyn for a boy or Georgia for a girl - should be underlined to show you know they are unusual and that they are not mistakes on your part.
4. If there were other marriages for either husband or wife, reference them by name so that they will be easy to find in your Family History.
5. In the upper right-hand corner mark the name and address of the Family Group Sheet preparer, also indicate what relationship you are to this family, such as great-granddaughter.
6. Place an X next to the number of the child who is your direct ancestor.
7. If any children are twins, adopted, stepchildren, or stillborn, place the information in parentheses after the child's name.

All information listed should be cited, that is identifying the source and its location, so that it can be easily located by other researchers.

That's all there is to it. After you get the Pedigree Charts and Family History Sheets and make several copies, you can start getting the information you'll need to begin filling them in.

[Source: Westin, Jeane Eddy, *Finding Your Roots*, Ballantine Books, New York.]



Genealogical Standards & Guidelines

Guidelines for Genealogical Self-Improvement and Growth

Recommended by the National Genealogical Society

Faced with ever-growing expectations for genealogical accuracy and reliability, family historians concerned with improving their abilities will on a regular basis—

- study comprehensive texts and narrower-focus articles and recordings covering genealogical methods in general and the historical background and sources available for areas of particular research interest, or to which their research findings have led them.
- interact with other genealogists and historians in person or electronically, mentoring or learning as appropriate to their relative experience levels, and through the shared experience contributing to the genealogical growth of all concerned.
- subscribe to and read regularly at least two genealogical journals that list a number of contributing or consulting editors, or editorial board or committee members, and that require their authors to respond to a critical review of each article before it is published.
- participate in workshops, discussion groups, institutes, conferences and other structured learning opportunities whenever possible.
- recognize their limitations, undertaking research in new areas or using new technology only after they master any additional knowledge and skill needed and understand how to apply it to the new subject matter or technology.
- analyze critically at least quarterly the reported research findings of another family historian, for whatever lessons may be gleaned through the process.
- join and participate actively in genealogical societies covering countries, localities and topics where they have research interests, as well as the localities where they reside, increasing the resources available both to themselves and to future researchers.
- review recently published basic texts to renew their understanding of genealogical fundamentals as currently expressed and applied.
- examine and revise their own earlier research in the light of what they have learned through self-improvement activities, as a means for applying their new-found knowledge and for improving the quality of their work-product.

©2002 by National Genealogical Society. Permission is granted to copy or publish this material provided it is reproduced in its entirety, including this notice.

QUERIES SOLICITED!

While the Ark-La-Tex Association has neither the facilities nor personnel to answer queries, however we encourage members and non members alike to send queries to be published in their quarterly publication, The Genie at no cost. Send your queries to ALTGA-Query, P.O. Box 4463, Shreveport, LA 71134-0463, or to Isabelle Woods at fdoll41@cs.com.

The queries are subject to editing, and will be printed as room is available. Only those mentioning Arkansas, Louisiana and Texas or a location within the parish/county can be used. Please make sure that your correct email address is in the query and that you state that the query is to be printed in The Genie. The Genie reaches an audience which is largely not on the internet, and so provides another group to help you with your research.

To join the Ark-La-Tex Genealogical Association and receive The Genie, a 25 page publication dedicated to the Ark-La-Tex genealogy, contact the address above. Dues are \$20 per year for a basic membership, \$25 per couple. Each issue contains news of the Association, and articles of interest to family historians.

MAKE SURE TO INCLUDE YOUR MAILING ADDRESS!

Queries

By Isabelle Woods

CHAPEK
CLARK
LOW
WILLIAMS

Desire to locate grave of and other information about Mary Ann (LOW) WILLIAMS, who died on 5 Jan 1904 and is said to be buried in the Jonesboro Cemetery, Jonesboro, Jackson Parish, Louisiana. If her grave has a marker, are there any other graves for the WILLIAMS family? Any information will be appreciated. Contact: June CLARK CHAPEK, 1187 Barkston Ct., Aurora, IL 60502, Telephone: (630) 851-5979; or E-mail: Jchapek@aol.com

GREEN
METHVIN
PARSONS
PERSON
ROWELL

Where was Mrs. Sara/Sarah Rowell in 1850 and 1860? In 1837 Sarah A. Pearson married John ROWELL in Wilcox County, AL. Is she the same Sara RO'WELL, 53, born North Carolina in the 1850 Natchitoches Parish, LA, Census with Will PARSONS (PEARSON?) 22, born South Carolina and Alex ROWELL, 11, born Louisiana? Sarah A. ROWELL sold land in Natchitoches Parish in 1859 with W.A. PEARSON as a witness. Where were Will and Alex in 1860? Write: Lynda GREEN METHVIN, 3237 Schuler Drive, Bossier City, Louisiana 71112

CARNINE
HOGAN
RUSH
WOODS

When did African-American Levy S. CARNINE (b KY, ca 1813), his wife, Frances _? (b KY or LA, ca 1840) and his daughter, Sophia CARNINE (b ca 1868, LA), died in Mansfield, Desoto Parish, LA? What was "Frances" maiden name? When and where were Levy and Frances married? Levy was once enslaved by Dr. Benjamin RUSH HOGAN, Sr., of Mansfield, LA. He was honored for his service to the Confederates during the Civil War in an article in the October 1924 issue of the Confederate Veteran. Contact: Mrs. Isabelle WOODS, 2016 Surrey Lane, Bossier City, LA 71111; e-mail: fdoll41 @es.com.

BROWN
CARNINE
WOODS

Seek descendents of Mathew BROWN and Sarah F. CARNINE (b ca 1864, LA), daughter of Frances and Levy CARNINE. Sarah and Mathew were married in 1889 in Desoto Parish, LA. By 1910 U. S. Census, Desoto Parish, Sarah is a widow with two sons: Ercell (aka Erccer, b Mar 1890, LA) and Leonard C., aka "Connolly," (b Feb 1898, LA). Who were Mathew's parents? When and where was Mathew born, died, buried? Where are sons Ercell and Leonard BROWN and their descendents after 1910? Contact: Mrs. Isabelle WOODS, 2016 Surrey Lane, Bossier City, LA 71111; e-mail: fdoll41 @cs.com.

CANINE
CARNINE
TUCKER
WOODS

Where is Lee TUCKER (b July 1882, LA) after 1900? When and where did he die? Where buried? Who are his descendents? In the 1900 U. S. Census, Desoto Parish, LA, Lee is shown as the son of Susan Tucker, a widow, and the grandson of Martha CANINE (aka Frances CARNINE?), also a widow. Lee's parents, Susan CANINE (aka CARNINE), daughter of Frances and Levy CARNINE, and Sammie TUCKER were married in Desoto Parish, LA, on 1 October 1881. His mother, Susan, was born ca 1861, LA; died 13 Feb 1929, Desoto Parish, LA. Who are Sammie TUCKER's parents? When and where was Sammie, born, died, and buried? Contact: Mrs. Isabelle WOODS, 2016 Surrey Lane, Bossier City, LA 71111; e-mail fdoll41 @cs.com.

ALEXANDER B. C.
 ORGANIZED MAR. 28, 1901
 BUILT JUNE 1902
 DESIGNED BY REV. EVANS
 DEACONS

J. C. COVINGTON	C. TUNLINE
T. H. HUNTER	A. RANDEL
S. H. HUNTER, SR.	G. G. LINEAR, SEC
TRUSTEE	
S. H. HUNTER, SR., PRES.	K. LINEAR, TREAS.
T. P. MONTGOMERY, SEC.	WM. JACKSON
A. PUCE	R. COVINGTON, SEXTON
REV. T. H. EVANS, PASTOR	
STONE LAID BY ATLANTA LODGE	
OCT, 10, 1909	

ALEXANDER NO. 1 MISSIONARY BAPTIST CHURCH
 100 EAST COTTON STREET
 OAK RIDGE, MOREHOUSE PARISH, LOUISIANA



LEFT: CORNERSTONES

ALEXANDER NO. 1 MISSIONARY BAPTIST CHURCH, INC.
 ORGANIZED 1901, BUILT 1902, REV. T. H. EVANS
 REBUILT 1944, REV. J. H. ALLEN
 REBUILT 1963, REV. J. E. LAWSON, PASTOR

CORP MEMBERS	DEACONS
P. THAXTON, CH	F. KNOX
R. SCATES	L. HUNTER
S. HUNTER	S. HUNTER
R. GIBSON	C. HERRON
C. HERRON	R. SCATES
F. KNOX	R. GIBSON
	D. FORSEY

F. KNOX, CLK., MRS. J. JEFFERSON, ASST.
 LAID BY
 M. W. PRINCE HALL GRAND LODGE
 F & A. M. OF LOUISIANA



JOHN G. LEWIS, JR., G. M.
 PRIDE OF OAK RIDGE LODGE 177
 C. H. BROWN, W. M. F. B. KNOX, SEC.
 A. L. 5968 A. D. 1968

ALEXANDER NO 1 B C CEMETERY, OAK RIDGE, LOUISIANA

THE GENIE First Quarter 2008

31

ID	DECEDENT	TITLE	BIRTH	DEATH	INSCRIPTION/COMMENTS
14	BARBER, DOROTHY		31 JUL 1941	10 JUL 1989	MOTHER
59	BECK, EUNICE MARIE	SIS.	28 FEB 1948	16 APR 2006	
26	BERKS, SALLIE		05 JAN 1907	15 APR 1978	
37	BROWN, MATILDA HUNTER		23 APR 1906	16 FEB 1986	
52	BROWN, VIOLA D.		02 FEB 1902	02 JAN 1973	
27	BURKS, HENRY		01 JUL 1914	29 DEC 1985	
44	DAVIS, JANE HUNTER		1883	1974	OUR MOTHER AND AUNT
12	DAVIS, SARAH M.		04 DEC 1935	13 AUG 1994	
13	DAVIS, WILLIE			31 DEC 2000	FUNERAL HOME MARKER
2	DORSEY, ALBERT SIDNEY "DOCK"		08 AUG 1900	06 FEB 1990	
6	DORSEY, DALTON		1894	1991	VAULT
48	DUNN, ANNIE SWINSON		1913	1986	
53	DUNN, JIMMIE	JR.	17 JUN 1915	15 JAN 1972	
47	DUNN, JOE RUSSELL		01 MAY 1911	08 MAR 1997	
36	EVANS, T. H.	REV.	15 SEP 1870	30 JUN 1960	FATHER. DUO W/ HATTIE LEE EVANS.
17	FLUECAS, CARRIE		24 SEP 1905	12 APR 1986	
51	GAY, BILLY RAY		25 SEP 1961	16 MAR 1979	
60	GAY, CURTIS D.	JR.	10 JUL 1968	21 FEB 1998	
63	GAY, EDDIE WAYNE		22 DEC 1955	27 SEP 2004	A LOVING BROTHER
62	GAY, JERRY W.		10 JUL 1957	01 AUG 2001	
58	GAY, M. C.		01 NOV 1914	17 DEC 1972	IS THIS HS CORRECTING DOB AND REPLACING OLD? (SEE ID 57)
57	GAY, M. C.		13 JUN 1914	17 DEC 1972	EXCEPT FOR DIFFERENT DATES OF BIRTH (DUPLICATES ID 58).
50	GAY, W. C.		09 DEC 1934	15 MAR 1984	
18	HERRON, EMMITT		04 APR 1947	07 MAY 1979	U S ARMY. VAULT.
21	HERRON, ETHEL MAE		27 SEP 1927	14 JAN 2003	A LOVING WIFE AND MOTHER
19	HERRON, MAE H.		17 DEC 1917	27 MAR 2000	MOTHER
20	HERRON, VIOLA		04 JUL 1895	19 AUG 1988	FOOTSTONE: MOTHER
32	HUBBARD, CHARLIE C.		21 JAN 1921	24 MAR 1989	TECH 5 U S ARMY WORLD WAR II
64	HUBBARD, JESSIE LEE			2007	
30	HUNTER, A. J.		04 MAR 1901	21 APR 1980	
33	HUNTER, ALONZO	SR.	1912	1992	VAULT
24	HUNTER, ARTHUR		30 JAN 1900	04 FEB 1986	
4	HUNTER, BASIL	SR.	18 OCT 1903	30 JUN 1987	

ALEXANDER NO 1 B C CEMETERY, OAK RIDGE, LOUISIANA

THE GENIE First Quarter 2008

32

ID	DECEDENT	TITLE	BIRTH	DEATH	INSCRIPTION/COMMENTS
3	HUNTER, BASIL	JR.	25 FEB 1939	19 FEB 2002	
40	HUNTER, EARLEAN FITCH		15 APR 1912	09 NOV 2006	DUO HEADSTONE WITH SELMA HUNTER, SR.
5	HUNTER, JENNIFER ANN		25 JAN 1962	20 APR 1995	
1	HUNTER, JOSEPH		25 JUL 1920	05 OCT 1997	
29	HUNTER, MYRIA		1903	1973	
38	HUNTER, SELMA		1910	1985	VAULT (DUPLICATES ID 39 BELOW)
39	HUNTER, SELMA	SR.	29 JUN 1910	08 FEB 1985	DUO HEADSTONE WITH EARLEAN FITCH HUNTER
23	HUNTER, VIRGINIA McT.		08 MAY 1904	11 FEB 1987	
28	JONES, ESTELLE DORSEY		15 MAY 1894	12 OCT 1982	
41	KNOX, CELIA JONES		06 JUN 1909	BLANK	TRIO W/ FLOYD LEONARD KNOX AND FOSTER BARON KNOX
43	KNOX, FOSTER BARON		11 JUL 1901	06 MAR 1982	TRIO W/ CELIA JONES KNOX AND FLOYD LEONARD KNOX
42	KNOX, LEONARD FLOYD		13 JUN 1928	BLANK	TRIO W/ CELIA JONES KNOX AND FOSTER BARON KNOX
49	MALLOY, SADIE DUNN		16 JAN 1946	02 SEP 1971	
54	MAYS, DAIMYION SHANDREAL		18 MAY 1978	09 FEB 2007	
55	MAYS, WILLIE LEE		03 AUG 1946	16 DEC 1993	
45	MIILLER, OLLIE		09 APR 1904	17 OCT 1996 ?	FHM. DAY DEATH OCCURRED MAY BE 13TH OR 17TH OCTOBER.
25	PRESLEY, AZZIE		12 MAY 1904	09 JAN 1984	
56	ROBINSON, OLA MAE		26 JUL 1936	04 JAN 1985	
16	SCATES, LUCILLE		1922	1987	VAULT
15	SCATES, ROBERT H.		1920	1997	VAULT
11	SHARP, LOLA		18 SEP 1911	19 DEC 1991?	YEAR OF DEATH ON FUNERAL HOME MARKER (FHM) ILLEGIBLE.
31	SMITH, CHARLIE		14 JUN 1948	11 SEP 1995	
34	SMITH, —EW		?? OCT ????	12 JUL 1969	HUSBAND OF LABELLE SMITH. HEADSTONE IS IN PIECES.
8	TAYLOR, SAMUEL	JR.	1921	2004	
7	THAXTON, CHRISTEN JONES		06 JAN 1908	14 NOV 1991	
22	THAXTON, EUGENE		07 DEC 1907	27 JUN 1990	PFC U S ARMY WORLD WAR II
9	TURNER, SUSIE KING		26 JAN 1907	07 DEC 1994	
35	WILLIAMS, HATTIE LEE EVANS		BLANK	BLANK	DAUGHTER. DUO W/ REV. T. H. EVANS
46	WILLIAMS, SUSIE		04 MAY 1939	11 FEB 2005	
10	YOUNG, DARVIN		27 AUG 1927	05 APR 1999	
61	YOUNG, ROBERT W.		05 FEB 1926	04 JUL 2000	TA U S NAVY WORLD WAR II

Bossier Parish Library Historical Center

Submitted by Ann Middleton, Director

In 1999 the Bossier Parish Library Historical Center opened in its current form with the mission of preserving "the History of Bossier Parish for the people of Bossier Parish." Today the collection has grown to more than 11,500 items with which we are able to provide answers to research questions from researchers everywhere. The collection includes genealogical and historical information, thousands of photographs and images and historical objects, all with ties to Bossier Parish. AND NOW, the Bossier Parish Library Historical Center has its collection database, along with its name and place index, online. You can browse historical photographs, look up your family name, and find some interesting artifacts - all from home! Many of the records have corresponding images attached. Go to: <http://bossier.pastperfect-online.com>.

The Historical Center participates with other area cultural organizations to present interesting programs and exhibits to the community. We also conduct oral history interviews with Bossier Parish residents. Each interview is transcribed and both the tape of the interview and the transcription are kept on file in the archives, available to researchers. Tours of the Historical Center are given upon request. We are always happy to share our resources.

Research questions can be submitted via email, telephone, fax, or regular mail. Copies are 15 cent per page.

Please add the Bossier Parish Library Historical Center to your list of places to visit. Enjoy the exhibits, peruse the archives and take pride in what is uniquely Bossier.

Bossier Parish Library Historical Center
2206 Beckett Street
Bossier City, LA 71111
Phone: (318) 746-7717
Fax: (318) 746-7766

Venire of Jury for January: 1890

State of Louisiana – Parish of Bossier.

Be it remembered, that, on this, the 14th day of October, 1890, we, the Jury Commissioners, whose names appear hereto, met at the Clerk's Office, in the town of Bellevue, La., and proceeded to draw from the General Venire Box, previously prepared by us, the following fifty names of persons qualified by law to serve as Grand and Petit Jurors for the first week of the January Term of the 2nd Judicial District Court of Louisiana, to be begun and Holden in and for the Parish of Bossier, on the 4th Monday in January, 1891, in pursuant of Act No. 54, of Louisiana Legislature, approved April 1, 1880, to-wit:

G.A. Wasson; Ward 6
A.J. Mose; Ward 1
Thomas Holmes; Ward 1
J.N. Sutton; Ward 4
F.J. Burks; Ward 5
S.N. Arnold; Ward 2
E.P. Giddens; Ward 6
J.F. Alford; Ward 6
Henry Bass; Ward 5
J.F. Love; Ward 6
G.W. Barrington; Ward 5
Augustus Morgan; Ward 4
A. Ludeke; Ward 6
J.T. Tally; Ward 3
J.M. Sellington; Ward 3
W.E. Pickett; Ward 5
H.L. Wheeler; Ward 4
W.H. Rogers; Ward 4
H.H. Montgomery; Ward 5
J.M. Yates; Ward 6
W.H. Colquitt; Ward 2
B.F. Beaver; Ward 5
B.M. Doyle; Ward 6
Tom Weeks; Ward 3
R.Y. Graves; Ward 3

R.A. Garner; Ward 5
F.B. Hayes; Ward 5
Ed. Bruton; Ward 6
J.S. Herring; Ward 6
A.J. Doty; Ward 4
J.C. Johnson; Ward 4
H. Bundy; Ward 5
D.W. Milling; Ward 2
W.B. Hickman; Ward 6
J.W. Farrington; Ward 4
S.T. Boggs; Ward 2
Wiley P. Harris; Ward 6
Wash Gleason; Ward 4
John Gleason; Ward 4
W.H. Clark; Ward 3
W.C. Hughes; Ward 3
A.S. Hall; Ward 6
T.J. Tidwell; Ward 2
John Hall; Ward 2
H.C. Spruill; Ward 3
Charles Smith; Ward 2
Wm. Hogan; Ward 6
M.R. Merritt; Ward 5
N.W. Sentell; Ward 3
J.L. Oliver; Ward 5

We also drew the following 30 names to serve as jurors the 2nd week of the January Term commencing Monday, January 26, 1891; to-wit:

D.E. Bass; Ward 5
N.F. McDade; Ward 6
C.W. McKinney; Ward 6
W.H. McClenaghan; Ward 3
J.M. Demoss; Ward 4
James Walker; Ward 4
L.P. Peyroux; Ward 3
B.D. Stinson; Ward 2
S.H. Wallace; Ward 4
J.L. Keith; Ward 5
F.F. Bates; Ward 1
J.A. Campbell; Ward 3
Tom Walker; Ward 3
W.L. Burks; Ward 5
H.M. Underwood; Ward 3

W.J. McMath; Ward 6
J.P. Keath; Ward 3
G.G. Allen; Ward 4
J.T. Ford; Ward 3
W.J. Fullilove; Ward 1
Bob Palmer; Ward 3
I.P. Lay; Ward 5
D.G. Milling; Ward 3
W.J. Johnson; Ward 4
H.C. Wyatt; Ward 3
A.J. Moss; Ward 1
W.R. Thomas; Ward 2
T.M. Arnold; Ward 2
C.W. Edwards; Ward 6
A.J. Hall; Ward 2

Source: "The Bossier Banner," Bellevue, Bossier Parish, LA, Thursday, January 22, 1891, Volume 29, Number 47, Page 3, Column 3.
Microfilm: 2006.022.009; # 9, Bossier Parish Library Historical Center, Bossier City, Louisiana.



Bossier District Court [1891]

Submitted by Patricia W. Griffin

[The following information was taken from "The Bossier Banner" paper, Bossier Parish, LA. Dated: Thursday, February 5, 1891; Volume 29, Number 49, Page 2. Microfilm: 2006.022.009, #9. Special thanks to the Bossier Parish Library History Center staff, Bossier City, LA.]

District Court, Judge J. T. BOONE presiding, convened at Benton on Monday, Jan. 26 [1891]. Following are the proceedings of the first week:

Defaults were taken in the following cases: J.H. NATTIN vs. Henry HARRIS, HUGHES & WILLIAMSON vs. E.J. BRYANT, J.H. NATTIN vs. N.W. GRIGSBY, S.W. VANCE vs. Wm. A. WYCHE, E.J. LEMAN vs. W.A. WYCHE, S.J. ZEIGLER vs. W.A. WYCHE, Answer filed by curator ad hoc; MARQUEZ & Co. vs. GRIBSBY, Simon HEROLD vs. Frank BOYD, Wm. ESTES, Jeff BUTLER, Jeff DAVIS, John COOPER, A.G. THOMPSON; PARKER, McKELLAR & Co. vs. L.B. PLAT; MERCHANTS and FARMER' BANK vs. A.H. HAMITER.

MARK, STADLER & Co. vs. G.B. ABERCROMBIE; judgment for plaintiffs.

Succession of N.W. SENTELL; 3rd annual account homologated.

Tutotship of Ellison M. ADGER; Fifth annual account homologated.

State vs. Wm. DORSEY; Trespass; Plead guilty; fined \$5.00 and cost.

State vs. Steve STEPHENS and Bob TAYLOR. Charge, burglary. Nolle Prosequi.

State vs. Walter WHITE; Assault to kill; Plead guilty; fined \$10.00 and cost, or 30 days in jail.

State vs. Newt JOHNSON; Assault to kill; Plead guilty; fined \$10.00 and cost, or 30 days in jail.

State vs. Geo. SMITH et al. Nolle Prosequi entered.

State vs. Andrew EDWARDS and Richard SMITH. Charge, larceny; Nolle Prosequi.

State vs. Lewis OLIFF and Joe BUSBY. Charged, trespass. Upon payment of cost, nolle prosequi.

State vs. Lucien MINER; running horse on public road. Plead guilty. Fined five dollars.

State vs. Wm. WAYNE. Charge, retailing liquor without license. Plead not guilty; waived trial by jury and elected to be tried by the Court. Acquitted and bond cancelled.

State vs. R.M. SIBLEY, et als.
Charge; burglary. Tried by jury
and acquitted.

J.H. NATTIN vs. Henry HARRIS.
Prayer for hearing filed.

Sam BENJAMIN vs. R.L.
STENSON. Judgment for
plaintiff.

Simon HEROLD vs. Wm. ESTES,
Jeff DAVIS and Frank BOYD.
Judgment for plaintiff in each
case.

PARKER, McKELLAR & Co. vs.
L.B. PLATT. Judgment for
plaintiff.

Merchants' and Farmers' Bank
vs. A.H.HAMITER; judgment for
plaintiff.

E. JACOBS vs. F.M. HANKS;
judgment for plaintiff.

Mattie SCOTT vs. Henderson
SCOTT; judgment for plaintiff.

Sam BENJAMIN vs. John REED
and Ed EEED; judgment for
plaintiff in each case.

Henry WIGGINS, Noah
CAMPBELL, Jack SMITH, Silas
CAMPBELL, Bud MARKS,
concealed weapons, pleaded
guilty. Each were fined \$10.00
and costs, or thirty days in jail.

Lizzie DICKSON et al., acquitted
and prisoners discharged.



BOSSIER SCHOOL BUS DRIVERS: 1947

Submitted by Ann Middleton

[The following is a list of 1947 school bus drivers in Bossier Parish [LA] and the schools for which they drove. This information was taken from a ledger titled "School Bus Expenditures-Gasoline-1947." This ledger is on loan to the Bossier Parish Library Historical Center; the loan number is L004.102.]

J. W. Cunningham, Bossier City High School.

Mr. Cunningham drove a 1947 Dodge purchased in September of 1947 from Central Motors at a cost of \$3,405.87. From 03 October 1947 to 10 June 1948 gasoline purchases for the bus totaled \$188.02.

Van Patrick, Bossier City High School. Mr. Patrick drove a 1947 Chevrolet purchased in September of 1947 from Howard Crumley Chevrolet Dealer at a cost of \$4,305.35. From 03 October 1947 to 10 June 1948 gasoline purchases for the bus totaled \$168.88.

Robert Newell, Bossier City High School. Mr. Newell drove a 1946 Chevrolet purchased on 26 December 1946 from Howard Crumley Chevrolet Dealer at a cost of \$3,437.09. From 03 October 1947 to 21 June 1948 gasoline purchases for the bus totaled \$161.63.

Roy Lee, Benton High School. Mr. Lee drove a 1947 Chevrolet purchased in September of 1947 from Howard Crumley Chevrolet Dealer at a cost of \$3,583.30. From 03 October 1947 to 21 May 1948 gasoline purchases for the bus totaled \$192.39.

John Wynn, Haughton High School. Mr. Wynn drove a 1946 Chevrolet purchased on 03 December 1946 from Caldwell Motor Company at a cost of \$3,182.35. From 03 October 1947 to 10 June 1948 gasoline purchases for the bus totaled \$316.60.

J. B. Kirklin, Rocky Mount School. Mr. Kirklin drove a 1946 Ford purchased 24 September 1947 from Hudson Body Company in Dallas, Texas at a cost of \$3,142.00. From 03 November 1947 to 22 June 1948 gasoline purchases for the bus totaled \$219.56.

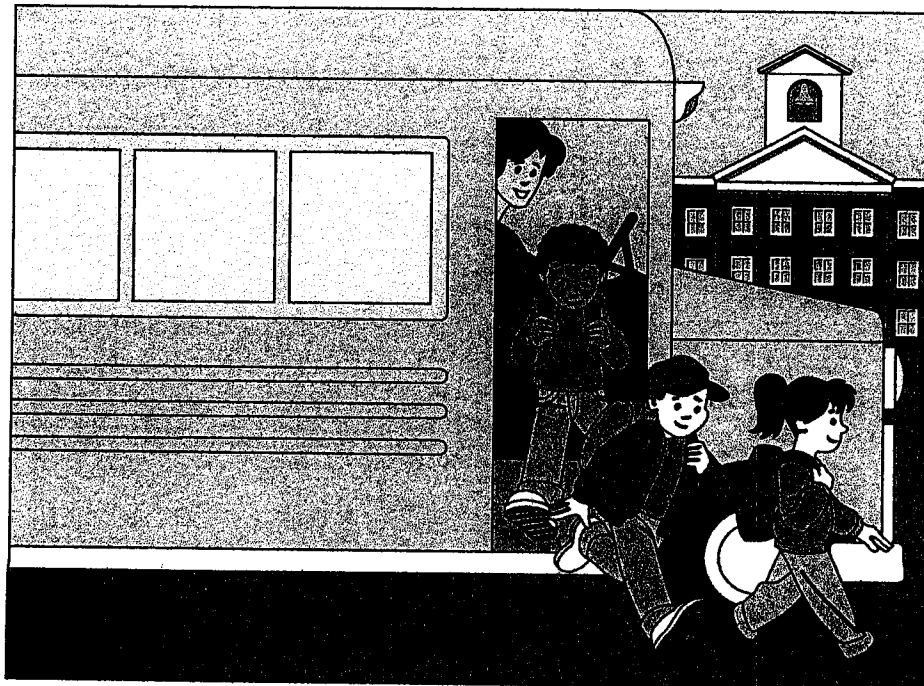
Roland Smith, Elm Grove School. Mr. Smith drove a 1944 Ford. From 03 October 1947 to 21 June 1948 gasoline purchases for the bus totaled \$259.43.

Mrs. Walter Connell, Elm Grove School. Mrs. Connell drove a 1946 Chevrolet purchased 05 September 1946 from Howard Crumley Chevrolet Dealer at a cost of \$1,263.69. From 03 October to 23 June 1948 gasoline purchases for the bus totaled \$146.95.

C. E. Hortman, Rocky Mount School. Mr. Hortman drove a bus that was purchased 21 September 1947 from Portwood Motor Company at a cost of \$3,800.00. From 03 October 1947 to 10 June 1948 gasoline purchases for the bus totaled \$449.34.

Richard Goss, Bossier Parish Training School. Mr. Goss drove a 1939 Chevrolet. From 07 October 1947 to 14 July 1948 gasoline purchases for the bus totaled \$427.51.

James Robinson, Bossier City Colored School. From 20 November 1947 to 21 June 1948 gasoline purchases for the bus totaled \$426.77.



Bossier Parish School Board Proceedings Benton, LA, January 3, 1891

Submitted by Willie R. Griffin

[The following article is taken from "The Bossier Banner" Bossier Parish, LA. Reporting The Bossier Parish School Board Proceedings; Thursday, January 8, 1891; Volume 29, Number 45, Page 2. Microfilm: 2006.022.009, # 9. Special thanks to the Bossier Parish Library History Center staff, Bossier City, LA.]

School Board of Bossier Parish met in regular session. Present: **J. B. Thompson, President; J. N. Bryan, W. J. Johnston, J. N. Platt, J. B. Adger, J. H. Keyser.**

When **Mr. J. D. Rogers**, a newly appointed member, appeared, took the oath of office, received his commission and participated in the proceedings.

The minutes of last meeting were read and approved.

A committee was appointed to wait on the Treasurer to ascertain the amount of money on hand and to be received for school purposes for the year 1891, who reported:

Cash on hand, \$5,091.65; Amount to be received on Township Fund, \$2,700.00; Amount apportionment from State, \$1,800.00; Total of \$9,591.63.

Following schools were located:

[Some schools were recorded with trustees and teachers.]

Ward 1:

One white school at Moss school house.

Trustees: **T. B. Moss, W. H. Bishop and G. A. F. Poole.**

One white school at Ash Point.

Trustees: **Thos. G. Pickett, W. D. Mercer, E. S. Dortch.**

One white school at A. Curtis school house.

One colored school at Knox Point.

Ward 2:

One white school at Benton.

Trustees: **Dr. B. Wise, Chas. Kingsley, A. G. Teague.**

Teacher: **Miss Kingsley.**

One colored school at Benton.

Trustees: **A. G. Teague, Richmond Jones, Wm. Smith.**

Teacher: **B. S. Paul.**

One colored school at Macedonia.

Trustees: **C. E. Byrd, Allen Ralph, Byram Rawls.**

Teacher: **S. H. Ralph.**

One Colored school at Hurricane Bluff.

Trustees: **Sam'l Boggs, John Marshall, Henry Mitchell.**

Teacher: **A. J. Smith.**

Ward 3:

One white school at Strayhan's.

Trustee: **J. F. Strayhan, J. L. C. Graham, Hill Hendricks.**

Teacher: **Miss Esther Thompson.**

One white school at Alden.

Trustees: **I. F. Elder, John Campbell, Jr., D. Sprott.**

One white school at Oak Hill.

Trustees: **J. N. Bryan, A. M. Hightower, R. B. Wise.**

Teacher: **Miss Sanders.**

One white school at Collinsburg.

Trustees: **J. R. Cavett, Jas. Riley, John H. Nattin.**

Teacher: **Miss Jim Thompson.**

One white school at Plain Dealing.

Trustees: **W. B. Goggs, J. J. Swindle, R. S. Doles.**

Teacher: **J. E. Johnston.**

One white school at Cottage Grove.

Trustees: **Dr. J. S. Millings, John Pickett, E. H. Durbin.**

One colored school at Paysinger's.

Trustees: **George Paysinger, Sam Law, Cornelius Howard.**

One colored school at Mr. Zion.

Trustees: **S. T. James, Albert Watson, Wm. Smith.**

Teacher: **N. L. Paul.**

One colored school at Lewisville.

Trustees: **Matt Stewart, Tobe Lyles.**

One colored school at Cottage Grove.

Trustee: **George Chambers, Henry Chambers, Tom Phillips.**

Ward 4:

One white school at Ansel.

Trustees: **W. A. Stroud, Israel Rogers, W. F. McClelland.**

One white school at Walker's Chapel.

Trustees: **Roxie Matlock, J. V. Kilgore, O. C. Cason.**

Teacher: **Mrs. L. E. Delaune.**

One white school at Center.

Trustees: **J. E. Holloway, G. R. Garrett, S. J. Boggs.**

Teacher: **J. B. Mading.**

One white school at Franks'.

Trustees: **J. D. Rogers, J. W. Dodson, H. M. Matlock.**

Teacher: **J. J. Stubbs.**

One white school at Red Land.

Trustees: **A. K. Edens, G. P. Winget, F. M. Johnson.**

One white school at Heifner's.

Trustees: **J. E. Rogers, J. L. Gore, W. E. Holloway.**

White school at Union Hill.

Trustees: **R. H. Curry, A. J. Demoss, John Gleason.**

Teacher: **Miss Lena Gleason.**

One colored school at Elizabeth church.

Trustees: **Alex Long, Wm. Jackson, Sam Neil.**

One colored school at Ansel.

Trustees: **Josiah Phillips, Bossier Bankhead, Sam Bryant.**

Colored school at Enon church.

Trustees: **Henry Thomas, Milton Ford, Frank Johnson.**

Teacher: **Adam Godwin.**

Ward 5:

White school at Rocky Mount.

Trustees: **Rev. Euos B. Foust, Dr. C. H. Irion, J. P. Gleason.**

Teacher: **Lee S. Swor.**

White school at Keith's.

Trustees: **Dr. G. W. Lockey, Charles Jones, A. Carr.**

White school at Whittington's.

Trustees: **J. B. Whittington, John M. McCall, D. M. Morrison.**

Teacher: **Miss Emma Hall.**

White school at Pine Grove.

Trustees: **A. L. Byram, Geo. Dalrymple, H. H. Montgomery.**
Teacher: **Mrs. C. B. Norman.**

White school at Concord.

Trustees: **F. J. Burks, Green B. Wilson, Joseph J. McKinney.**
Teacher: **L. E. Wallace.**

White school at Adger and Hanks'.

Trustees: **Capt. F. M. Hanks, W. L. Adger, Capt. B. R. Nash.**
Teacher: **Miss Carrie Rabb.**

Colored school at Longview.

Colored school at Gallilee.

Trustees: **R. B. Martin, Alf Thomas, A. B. Martin.**
Teacher: **Allen Brown.**

Colored school at New Light church.

Trustees: **Moses Jennings, Richard McCullough, Mose Dalrymple.**

Colored school at Midway.

Trustees: **Capt. Thos. Lyles, Tobe Coleman, Jack Powell.**
Teacher: **Henry Coleman.**

Ward 6:

White school at Bellevue.

Teacher: **W. A. LeRosen.**

White school at Fillmore.

Trustees: **J. W. Rains, J. W. Prince, W. H. Bledsoe.**
Teacher: **Miss Dollie Fort.**

White school at Haughton.

Trustees: **Dr. Paul Lawrence, J. G. Grounds, Dr. Pennington.**

White school at Pease's school house.

Trustees: **E. L. Houston, J. H. Bosley, J. H. Sibley.**
Teacher: **Miss Nona Griffin.**

Colored school at Bellevue.

Colored school at Asbury church.

Colored school at Filmore.

Trustees: **Geo. Fullwood, Tom Copeland, Arthur Hawkins.**

Colored school at Haughton.

Trustees: **Phil Williams, Holland Lawson, Enoch Sykes.**

Colored school at Mims' school house.

Trustees: **Hal Sweeny, Tom Rascoe, Frank Burks.**

Colored school at Edwards' School house.

Trustees: **Arthur G. Edwards, Tom Wilson, Isaac Patterson.**

It was moved and seconded, That all teachers and patrons of public schools come forward and pay their poll tax.

On motion, No teacher can draw pay when report is not signed by at least two trustees.

Moved and seconded, That J. H. Keyser is allowed \$6.00 for express charges on public documents.

It was resolved, That the times of opening the schools be left to the trustees and patrons of the schools.

All children between the ages of 6 and 18 are to be admitted to the schools without extra charge.

One motion, The schools were authorized to be run for five months during the year 1891.

A resolution was submitted by the Bossier Parish Farmers' Union and not acted upon, for the reason that what it asked for was already the law of the Board.

The President appointed on said committee **J. J. Stubbs, J. R. Reynolds and M. H. Brock.**

The Treasurer, **W. H. Scanland**, submitted his report.

On motion, adjourned sine die. **J. B. Thompson**, President. **J. H. Keyser**, Sec'y and Supt.

ALTGA's Horn-Book: Medical Records for Genealogical Purposes

For the General Session of 10 November 2007. Prepared by Glenda Bernard.

Dr. George Colmer (1807-1879) was the primary physician for Livingston Parish, Louisiana, from the mid 1850s until his death in 1879. He kept meticulous medical records for each member of each family he served in a set of diaries and journals. Not only did he record the name of the person, the ailment, and his procedures and prescriptions to treat the illness, he instinctively included their age and their relationship to the family. Often he noted their relationship to other members of the community! What a genealogical resource for anyone researching surnames in Livingston Parish and the surrounding area.

Dr. Colmer never married and had no family to survive him in this country. Upon his death his medical records and diaries were kept by close friends. A great, great granddaughter of one of his friends donated the books to Tulane University, New Orleans, Louisiana. These genealogical gems were located in the Special Collections Department in 1976 by this writer as a person who had developed an interest in family history only one year before. They had been in the library for many years without anyone making them available for research. Since these records were in their original pen and ink form, they were difficult to read and even more difficult to use effectively for research. The librarian in the Rare Book Room at Tulane offered to make copies at a nominal cost since the originals were in such a delicate condition. With the help of a magnifying glass, a local family physician's donation of an old medical book, and a little extra time to transcribe over 400 pages of the diaries, much of this exciting work was copied. Other than tremendous family records available, Dr. Colmer recorded events during the Civil War in Louisiana and its

effects on his thriving town of Springfield in Livingston Parish with hundreds of clippings from New Orleans and area newspapers.

The writer transcribed about two-thirds of Dr. Colmer's journals before a death in her family forced to her halt the work in 1979. The Edward Livingston Historical Association from Livingston Parish offered to pay for its publication, which was completed by another Livingston researcher Mr. Warren Wall in the 1980s.¹

These amazing finds are not the only treasures lying quietly in the stacks of rare book rooms. Perhaps other volumes of similar significance are just waiting to be found, transcribed and printed. Some guidelines might be order for others to "throw out a net and see what might be caught:"

- ❖ Check out Rare Book Rooms or Special Collections at university libraries.
- ❖ Purchase copies of the document if it is still in print or reprints are available; otherwise consider having the document photocopied if the repository is able and willing.
- ❖ Plan to spend a great deal of time learning to accurately decipher the handwriting style.²
- ❖ Use medical dictionaries, the internet, or other research tools to understand medical terms used in a given timeframe and study epidemics which may have occurred at the time.

If one is fortunate to discover unpublished treasures like Dr. Colmer's, plan a way to publish a transcription for other genealogists to use in their research.

¹ This was published in two parts for The Edward Livingston Historical Association, Inc.: Warren B. Wall, *Dr. Colmer's Journals, Diary C: Part 1, 1850-1862* (Livingston, Louisiana: Ellzey Publications, 1986), and Warren B. Wall, *Dr. Colmer's Journals, Volume Two, Diary C: Part 2, 1863-1878* (Livingston, Louisiana: Ellzey Publications, 1987). Mr. Wall credited Mrs. Bernard for her contributions to both volumes. Diary C makes references to other diaries labeled A, B, and F; however, the location of these items, if they survived, is unknown to the writer.

² One resource to help with this, recommended by Phil Adderley, is Kip Sperry, *Reading Early American Handwriting* (Baltimore: Genealogical Publishing Company, 1998).

Morningstar Baptist Church

Submitted by Willie R. Griffin

Recorded: July 2006



THE GENIE
First Quarter 2008

Morningstar Baptist Church Cemetery

346 Jessie Latin Road; Gloster, LA 71030

Office Phone: 925-8859

Location: From Hwy 171 South, turn on the Red Bluff Road for 3.5 miles, then left on to the Jessie Latin Road for .5 mile.

The Church Cemetery is located next to and in back of the Church.

47

Surname	Given Name	Born	Died	Age	Comments
Adams	Lovetta H.	May 10, 1907	Jul. 24, 1974		Gone But Not Forgotten
Cash	Robert	Oct. 20, 1925	Oct. 30, 1965		In memory of our loving brother
Cash	Dea. Jack	Oct. 20, 1886	Jan. 16, 1963		In memory of our loving Daddy
Cash	Cuffie	Jul. 5, 1892	Aug. 22, 1960		
Cash	Earnest	Feb. 11, 1914	Apr. 20, 1993		
Cash	Ivery	Jul. 9, 1920	Mar. 25, 2001		
Cash	Lizzie John	Jan. 1, 1929	Feb. 7, 1998		We love you, but God loved you best
Cash	Bob Willie	Sep. 9, 1934	May 5, 1989		
Cash	Jack	Oct. 6, 1909	Feb. 25, 1986		TEC 5, US Army
Cash	Charity P.	Sep. 11, 1911	Jan. 24, 1981		
Cash	Patsy	Oct. 20, 1891	Feb. 11, 1983		Mother-The Lord is my Shepherd, I shall not want
Cash, Jr.	Jack	Feb. 22, 1919	Jul. 23, 1988		Father
Courtney	Carrie		June 30, 1931		

Morningstar Baptist Church Cemetery

Surname	Given Name	Born	Died	Age	Comments
Courtney	Mary	1890	Oct. 4, 1972		Gone but not forgotten
Green	Emily Pouncy	Apr. 15, 1892	Dec. 15, 1978		
Henry	Patsey H.	1903	1974		Sleeping in Peace
Hines	Arthur	Feb. 15, 1901	Aug. 31, 1979		Gone but not forgotten
Hines	Mary	1909	1983		
Hines	Western	Oct. 2, 1927	Oct. 15, 1988		At Rest
Hines	Arthur	Nov. 18, 1888	Feb. 17, 1955		Louisiana, CPL, Sanitary Corps, 39th Div., WWI
Hines	William "Taft"	Jul. 30, 1908	Oct. 10, 1987		Gone But Not Forgotten
Hines	Waskom	Aug. 24, 1903	Feb. 10, 1971		At Rest
Hines	Charlie D.	Oct. 5, 1907	Apr. 22, 1969		Louisiana, MSGT, US Army, WWII
Hines	Emma	July 4, 1880	Nov. 15, 1960		Mother - At Rest
Hines	Dea. S.	Jun. 1875	Oct. 8, 1948		Father - At Rest
Hines	Stephen	Oct. 5, 1913	Nov. 28, 1945		At Rest
Hines	Edgar	May 20, 1928	Aug. 14, 1967		At Rest
Hines	Lighton	Feb. 18, 1901	Aug. 28, 1968		
Hines	Ruthie	Mar. 26, 1927	Sep. 4, 1986		We Love you Dearly but God Love You Best
Hines	Jack	1882	1960		Asleep in Jesus
Hines	Henry	Sep. 18, 1905	Jul. 24, 1977		Gone But Not Forgotten
Jones	Elessie Cash	Mar. 11, 1922	Mar. 13, 1999		you Best
Latin	Hamp		Apr. 8, 1942	65	At Rest
Latson	Phoebe Cash	Aug. 22, 1917	Oct. 22, 2000		Wife of Floyd Latson-She was the sunshine of our life
Latson	Betty	Jul. 27, 1952	Jun. 5, 1980		

Morningstar Baptist Church Cemetery

Surname	Given Name	Born	Died	Age	Comments
Latson	A. B. (Boo)	Apr. 14, 1918	Oct. 18, 1993		
Latson	Bertha Cash	Dec. 4, 1911	Apr. 11, 1991		Gone But Not Forgotten
Latson	Arthur C.	Aug. 11, 1940	Nov. 16, 1992		Our Beloved Son and Brother
Lattin, Jr.	Hamp	Aug. 1935	Mar. 22, 1963		Gone but not forgotten
Lewis	Margaret Pouncy	Sept. 17, 1925	Jan. 7, 1986		
Pouncy	Helen H.	Oct. 15, 1934	Feb. 1970		Rest in Peace
Pouncy	Johnny Lee	Nov. 14, 1962	Jul. 18, 1975		
Pouncy	John S.	Dec. 15, 188?	Jan. 2, 1961		In Peace
Pouncy	Mariah	1932	1991		
Pouncy	Mack	Jul. 19, 1961	Aug. 9, 1985		At Rest
Pouncy	Louis		Feb. 10, 1928	69	Gone but not forgotten
Pouncy	Dea. Earnest	May 31, 1900	Mar. 8, 1965		Gone but not forgotten
Pouncy	Nannie		June 15, 1945	65	Gone but not forgotten
Pouncy	John Ida	Mar. 10, 1920	Dec. 1, 1984		Ours For a Little while, with Jesus Forever
Pouncy	Louada V. "Coot"	Jan. 3, 1957	Aug. 4, 1988		Her Greatest Joy was in making all Happy
Pouncy	Lula Bell	May 22, 1921	Nov. 11, 2004		
Pouncy	Nancy C.	Jun. 19, 1919	Nov. 26, 1988		Mother
Pouncy	John	1922	1976		PFC, US Army, WWII
Pouncy	Henry "JR"	May 20, 1940	Jun. 6, 1975		
Pouncy	Peter	Mar. 20, 1917	May 12, 1991		
Pouncy	Henry	Jan. 2, 1919	Sep. 19, 1993		
Pouncy	Wade	Jun. 19, 1933	Sep. 12, 1989		

Morningstar Baptist Church Cemetery

Surname	Given Name	Born	Died	Age	Comments
Pouncy	Sharon Venester	Aug. 15, 1960	Nov. 6, 2004		
Pouncy	Franklin	Feb. 28, 1924	Mar. 7, 2001		Brother and Uncle
Pouncy, Sr.	Luther	May 13, 1913	Apr. 30, 1980		Father
Presely	Lark	July 5, 1890	Feb. 17, 1961		Texas, PVT Co. B, 402 REG, Labor in OMC, WW I
Presley	Stephen	1905	1981		
Presley	John Peter "JP"	May 28, 1927	Sep. 22, 2000		In Loving Memory-Beloved Husband and Daddy
Presley	Issac Thomas	Oct. 7, 1902	Aug. 26, 1982		Gone but not forgotten
Presley	Huey P.	May 26, 1934	Dec. 17, 1982		Your memory will ever be with us
Presley	Adeline P.	Jul. 5, 1905	Dec. 13, 1945		A Loving Mother
Presley	Stephen "Poppa"	Aug. 10, 1877	Jun. 30, 1961		Beloved Grandfather
Presley	Parker T.				TM2, USNR
Samuel	Leroy	1930	1980		
Strout	Annie Cash	Feb. 17, 1926?	Apr. 14, 1991		
Weathers	Virginia Presley	Feb. 28, 1929	Feb. 1, 2002		She was an inspiration to all who knew her

Good Articles are needed!

SURNAME INDEX

(A surname may appear more than once on a page.)

Abercrombie 36	Canine 29	Eichholz 9
Adams 47	Cardin 2	Elder 41
Adderley 5, 6, 7, 46	Carnine 29	Estes 36, 37
Adger 36, 40, 43	Carr 42	Evans 30, 31, 32
Alford 34	Cash 47, 48, 49, 50	Farrington 34
Allen 4, 30, 35	Cason 42	Fitch 32
Andrews 3, 4	Cavett 3, 4, 41	Fluecas 31
Ansel 42	Chambers 41	Ford 21, 35, 42
Arnold 34, 35	Chapek 29	Forsey 30
Bankhead 42	Christian 5	Fort 43
Barber 31	Clark 29, 34	Foust 42
Baron 32	Colman 43	Frank 42
Barrington 34	Colmer 45, 46	Fullilove 35
Bass 34, 35	Colquitt 34	Fullwood 43
Bates 35	Connell 39	Garner 34
Beauregard 3	Cooper 36	Garrett 42
Beaver 11, 34	Copeland 43	Gattis 11, 16
Beck 31	Courtney 47, 48	Gay 31
Bellar 2, 4	Covington 30	Gibson 30
Benjamin 37	Cowan 21	Giddens 34
Berks 31	Cravens 3	Gleason 34, 42
Bernard 1, 5, 45, 46	Crumley 38, 39	Godwin 42
Bierns 2	Cunningham 38	Goggs 41
Bishop 40	Curry 42	Gore 42
Bledsoe 43	Curtis 40	Goss 39
Boggs 34, 41, 42	Dalrymple 43	Graham 41
Boone 36	Davis 31, 36, 37	Graves 34
Bosley 43	Delaune 42	Green 29, 48
Boyd 36, 37	Demoss 35, 42	Gribsby 36
Brock 44	Dennis 9	Griffin 1, 21, 36, 40, 43, 47
Brown 29, 30, 31, 43	Dickson 3, 37	Grounds 43
Bruton 34	Dodson 42	Gross 21
Bryan 40, 41	Doles 41	Hall 34, 35, 42
Bryant 36, 42	Dorsey 31, 32, 36	Hamiter 36, 37
Bumstead 17	Dortch 40	Haney 21
Bundy 34	Doty 34	Hanks 37, 43
Burks 31, 34, 35, 43, 44	Doucet 21	Hargreaves 9
Busby 36	Doyle 34	Harris 18, 34, 36, 37
Butler 36	Dunn 31, 32	Hartwell 26
Byram 43	Durbin 4, 41	Hawkins 43
Byrd 41	Edens 42	Hayes 34
Caldwell 38	Eddy 26	Heifner 42
Campbell 35, 37, 41	Edwards 35, 36, 44	

SURNAME INDEX

(A surname may appear more than once on a page.)

Henderson 8
Hendricks 41
Henry 48
Herold 36, 37
Herring 34
Herron 30, 31
Hickman 34
Hightower 41
Hines 48
Hoffman 7, 8, 10, 13, 16
Hogan 29, 34
Holloway 42
Holmes 34
Hortman 39
Houston 43
Howard 41
Hubbard 31
Hudson 38
Hughes 34, 36
Hunter 3, 30, 31, 32
Hutchison 2
Hyden 5, 7, 8, 10, 11, 12, 13,
14, 15, 16
Irion 42
Jackson 30, 42
Jacobs 37
James 41
Jefferson 30
Jennings 2, 43
Johnson 1, 34, 35, 36, 42
Johnston 40, 41
Jones 32, 41, 42, 48
Keath 35
Keith 35, 42
Kelly 25
Keyser 40, 44
Kilgore 42
King 32
Kingsley 40
Kirklin 38
Knox 30, 32
Latin 47, 48
Latson 48, 49
Lattin 49
Law 41
Lawrence 43
Lawson 30, 44
Lay 35
Lee 5, 6, 7, 8, 13, 31, 32, 38,
49
Leman 36
LeRosen 43
Lewis 30, 49
Linear 30
Livingston 46
Lockey 42
Long 42
Love 34
Low 29
Ludeke 34
Luebking 9
Lyles 41, 43
Mading 42
Malloy 32
Marks 37
Marshall 41
Marquez 36
Martin 43
Matheson 18
Matlock 42
Mays 32
McCabe 1
McCall 42
McClelland 42
McClenaghan 35
McCullough 43
McDade 35
McKellar 36, 37
McKinney 35, 43
McMath 35
Mercer 40
Merchants 36
Merritt 34
Methvin 29
Middleton 33, 38
Miller 32
Milling 3, 34, 35
Millings 41
Mims 44
Miner 36
Mitchell 41
Montgomery 30, 34, 43
Morgan 34
Morrison 42
Morse 7, 8, 10, 11, 12, 13,
16
Mose 34
Moss 35, 40
Nash 43
Nattin 36, 37, 41
Neil 42
Newell 38
Norman 43
Norris 5, 6, 7, 8, 9, 10, 11,
12, 13, 14, 15, 16
Oliff 36
Oliver 34
Palmer 3, 35
Parker 36, 37
Parsons 29
Patrick 38
Patterson 44
Paul 41
Paysinger 41
Pearson 29
Pease 43
Pennington 43
Person 29
Peyroux 35
Phillips 41, 42
Pickett 34, 40, 41
Plante 17
Plat 36
Platt 37, 40
Poole 40
Portwood 39
Pouncy 48, 49, 50
Powell 43
Presely 50

SURNAME INDEX

(A surname may appear more than once on a page.)

Presley 32, 50
Prince 43
Puce 30
Rabb 43
Rains 43
Ralph 41
Randel 30
Rascoe 44
Rawls 41
Reed 37
Reynolds 44
Riley 41
Robinson 32, 39
Rogers 34, 40, 42
Rosborough 3
Rowell 29
Rush 29
Russell 31
Samuel 50
Sanders 41
Scanland 44
Scates 30, 32
Scholes 1
Scott 37
Sellington 34
Sentell 3, 34, 36
Shackelford 3
Shandreal 32
Sharp 32
Sibley 37, 43
Simmons 7
Smith 32, 34, 36, 37, 38, 41
Sperry 46
Sprott 41
Spruill 34
Stadler 36
Stenson 37
Stephens 36
Stewart 41
Stinson 35
Strayhan 4, 41
Stroud 42
Strout 50
Stuart 5, 6, 7, 8, 11, 12, 16
Stubbs 42, 44
Sutton 34
Sweeny 44
Swindle 41
Swinson 31
Swor 42
Szucs 9
Sykes 44
Taft 48
Tally 34
Taylor 32, 36
Teague 40, 41
Thaxton 30, 32
Thomas 35, 42, 43, 50
Thompson 36, 40, 41, 44
Tidwell 34
Tucker 29
Tunline 30
Turner 32
Underwood 35
Van 5, 6, 8, 9, 10, 11, 12,
13, 14, 15, 16
Vance 36
Vann 10
Van Der Hyden 9
Van Hyden 9
Vance 3
Vaughn 10, 11
Venester 50
Wade 11
Waddell 7, 8, 10, 11, 13,
16
Waddil 13
Waddill 8, 10, 11
Walker 35, 42
Wall 46
Wallace 35, 43
Wasson 34
Watson 41
Wayne 36
Weathers 50
Weeks 34
Weiland 21
Westin 26
Westlaw 14
Whatley 17
Wheeler 34
White 2, 4, 36
Whittington 42
Wickersham 2
Wiggins 37
Williams 29, 32, 44
Williamson 36
Wilson 43, 44
Winget 42
Wise 5, 6, 7, 40, 41
Woods 28, 29
Worthy 3
Wyatt 35
Wyche 36
Wynn 38
Yates 34
Young 32
Zeigler 36