



---

VOLUME 43

FIRST QUARTER 2009

NUMBER 1

---

PUBLISHED QUARTERLY BY

ARK-LA-TEX GENEALOGICAL ASSOCIATION, INC.

P.O. BOX 4463  
SHREVEPORT, LOUISIANA 71134-0463

# THE GENIE

VOLUME 43

FIRST QUARTER 2009

NUMBER 1

## TABLE OF CONTENTS

### FEATURES

- |    |  |    |  |
|----|--|----|--|
| 2  | Board of Directors 2009, Photo   | 26 | Whispering Pines Cemetery<br>Bastrop, LA<br>By Isabelle Woods        |
| 6  | In Memory of<br>Mrs. Betty Ann Green Kintzing  | 35 | Charles Leonhardt Family Bible<br>By Herman L. Weiland               |
| 7  | Mary Jane (St. Clair) Simeon<br>By Glenda Efferson Bernard                           | 37 | Queries; Query Note  |
| 12 | Red Land, Louisiana<br>By Dale Jennings  | 38 | Historic Shreveport  |
| 16 | ALTGA's Horn-Book:<br>Putting Together Those Darn<br>Footnotes<br>By Philip Adderley | 40 | Beginner's Genealogy Class   |
| 18 | Guardianship of<br>Helen Mallory, Minor<br>By Willie and Patricia Griffin            | 41 | Intermediate Genealogy Class   |
| 19 | Welcome Lise' Taylor   | 43 | Do You Have French Canadian<br>Ancestors? Part I<br>By Harry Lazarus |
| 21 | History & Hauntings of Illinois<br>Curse of Kaskaskia<br>By Harry Lazarus            | 50 | Accessing Heritage Quest From<br>Your Home Computer                  |
| 24 | Article Submissions  |    |  |

### DEPARTMENTS

- |    |  |
|----|--|
| 1  | The President's Message<br>By Jim Johnson          |
| 25 | Exchange Periodical Review<br>By Constance Whatley |

## **ARK-LA-TEX GENEALOGICAL ASSOCIATION, INC.**

Post Office Box 4463  
Shreveport, Louisiana 71134-0463

The *Ark-La-Tex Genealogical Association, Inc.* is a non-profit, non-sectarian, non-political, educational organization dedicated solely to the cause of genealogy. This organization is governed by these purposes:

To collect, preserve, and make available genealogical materials, documents, and records; to encourage an interest in genealogy and to sponsor educational programs for its development; to promote and publicize the City of Shreveport, Louisiana, as a major genealogical research center for genealogists and historians; to cooperate with and assist all other genealogical, historical, and patriotic societies in the furtherance of these purposes; to compile and publish a quarterly composed of records and data related to the science of genealogy.

The *Ark-La-Tex Genealogical Association, Inc.* meets on the second Saturday of each month from 1:00 p.m. to 3:00 p.m. at the Randle T. Moore Senior Citizen Center, 3101 Fairfield Avenue, Shreveport, LA.

Dues for membership from January 1 through December 31 of each year in the *Ark-La-Tex Genealogical Association, Inc.* are \$20.00 for an Individual Membership and \$25.00 for an additional family member, same household, and one quarterly per household.

All members receive four issues of The GENIE, which is published quarterly.

The *Ark-La-Tex Genealogical Association, Inc.* will publicize a book of genealogical interest in The GENIE when submitted by the publisher or an author. These books are then donated to the Shreve Memorial Library, Broadmoor Branch Genealogy Department, 1212 Captain Shreve Drive, Shreveport, Louisiana 71105, where they are made available to the public. The Ark-La-Tex Genealogical Association, Inc. periodically donates other genealogical material to this library.

The *Ark-La-Tex Genealogical Association, Inc.* welcomes queries, which are published free in The GENIE. A query must be no more than seventy (70) words, either typewritten or legibly handwritten.

## **Ark-La-Tex Genealogical Association**

### **BOARD OF DIRECTORS FOR 2009**

President	Jim Johnson	jjohnson747@suddenlink.net
First Vice President	Reed Mathews	reedmathews@yahoo.com
Second Vice President	Glenda E. Bernard	gebernard@bellsouth.net
Recording Secretary	Cynthia D. Millen	millencndyl@wmconnect.com
Corresponding Secretary	Raymon Owens	blickblaque@shreve.net
Treasurer	June L. Scholes	jscholez@aol.com
Trustee	Cynthia D. Millen	millencndyl@wmconnect.com
Trustee	Marilyn B. Christian	mbcspirit@aol.com
Trustee	Edwina Wise	(318) 865-7975
Trustee	Doris B. Hung	dbhunt7@bellsouth.net
Past President	Willie R. Griffin	wraygriffin3@bellsouth.net

### **PUBLICATION (THE GENIE)**

Editor	Willie R. Griffin	wraygriffin3@bellsouth.net
Book Reviews	Herman L. Weiland	(318) 746-5811
Queries, Typing & Indexing		
Printing	Victor C. Rose	vcrnels@aol.com
Labels	Michael E. Broussard	(318) 222-1046
Exchange	Constance Whatley	cwhatley2@comcast.net
Bulk Mailing	Reed Mathews	reedmathews@yahoo.com

### **ALTGA COMMITTEES**

Hospitality	Cynthia D. Millen	(318) 929-2983
Hospitality	Chris Stoll	(318) 746-0383
Telephone	Vernell Rose	(318) 687-3673
Programs	Jim Johnson	(318) 746-1851
Programs	Edwina Wise	(318) 865-7975
Publicity and Greeter	Chris Stoll	(318) 746-0383
Education	Phil Adderley	(318) 286-7762
Web Page	Jim Johnson	(318) 746-1851
Seminar	Jim Johnson	jjohnson747@suddenlink.net
Membership	Reed Mathews	(318) 797-6550

**Visit our website:** <http://www.rootsweb.com/~laaltga/>

## Statement of Publication

[Ark-La-Tex Genealogical Association, Inc.]

**The Genie** is published quarterly with issues in March, June, September and December. Each member receives four issues for each year of membership. All material published in **The Genie** is compiled and contributed by the members. Members and nonmembers of the Ark-La-Tex Genealogy Association may contribute material for publication in *The Genie* (*bible records, cemetery listings, diaries, wills, etc.*). Such contributions are appreciated and encouraged. Send material for publication to *The Genie* at the Association's mailing address. Material will be used at the discretion of the Editorial Review Board as space permits. We reserve the right to edit and/or condense material as needed. Submission deadlines are the last week before the first day of the month of quarterly publication.

The Association *exchanges periodicals* with other genealogical and historical organizations publishing data of general interest. These periodicals are then donated to the Broadmoor Branch *Genealogy* Section of the Shreve Memorial Library. We regret that we cannot exchange with limited family organizations. However, send samples of your publications for review. Since many publications possess information of value concerning families contain therein.

When *Cemetery Records* are submitted, include the name of the contributor, the copier, date copied and cemetery locations (such as road name or number, community, etc.) and also the Section, Township, and Range, if known. When *Bible Records* are submitted, give date and publisher of the Bible (if known), date copied, name of the contributor, name of present owner and the original owner.

**Queries** are free and encouraged. Please submit them typed or very plainly written. Space is limited. Please be brief and concise, using no more than 70 words per query. The editor reserves the right to edit or reject queries not suitable for publication.

The Genie cannot be responsible for errors or inaccuracies, but will hasten to publish corrections. Please read the material carefully and advise the Association in writing of corrections.

This publication is *indexed* in the Periodical Source Index published by the Allen County Public Library Foundation, Ft. Wayne, IN.

### Copyright Laws

All who submit material from any source should be aware of copyright restrictions. When applicable, permission to use published material must be in writing and should be included when manuscript is submitted. Source and date of information used should be indicated.

# President's Message

This year brings with it a new slate of officers. While some of us were reelected to the Board of Directors, we welcome the following newly elected trustees: Marilyn Christian, Doris Hunt, and Edwina Wise. Two notable changes within our board is June Scholes as our new treasurer and Glenda Bernard assuming the role of 2<sup>nd</sup> Vice President. This gives our executive board an excellent balance of experience and a source for new ideas that will continue to move the association forward.

We owe a debt of gratitude to Willie Griffin who has served the past two years as President, while simultaneously serving as editor. A job well done! Also, a special thanks goes to Herman Weiland, who has diligently served as our treasurer for the past several years. And finally, a salute goes to outgoing Victor Rose for his prior service on the board.

We began the year with an ambitious schedule. In January our program featured Melinda West, a member of the Red River Valley Railroad Historical Society, who spoke about the early steam powered trains that served and helped to settle this area. In February, we observed Black History Month and had as our special guest Terry Peterson, a senior student at LSUS, who spoke of his research and the challenges he overcame in his quest to find his ancestors. Our program this month will feature Glenda Bernard and Marilyn Christian, whose presentation will include an analysis of prior research conducted by one of our members and make recommendations to resolve existing brick walls. This month, we are also co-sponsoring a half-day Irish Research Program, with the help of two other local genealogy groups, GENCOM and Friends of Genealogy. This program will be presented by the Ulster Historical Foundation, headquartered in Belfast, Ireland.

Planning is also well underway for a beginner's genealogy class and an intermediate level class this spring. The success of our educational programs is attributed to the outstanding work of our education committee, comprised of Phil Adderley, Glenda Bernard, and Marilyn Christian.

Another area we are focusing on is the Genie. We are soliciting articles to be published, whether they are family history sketches or narratives, cemetery and church records, or articles regarding local history. This is one way that any member or reader of the Genie can contribute. Please keep in mind that issues of the Genie will remain in library collections for many years to come and that the information contained therein will benefit readers in the future. Publishing an article in the Genie is an excellent way that you can document the research that you have done.

While our 'official' purpose may be to provide educational programs to promote genealogy, we are finding other ways to help our fellow genealogist. We are doing limited lookups and offering assistance to those that need a bit of guidance in their research.

I am looking forward to working with all of you to provide informative programs and assistance that will further your research.

***Jim Johnson, President***



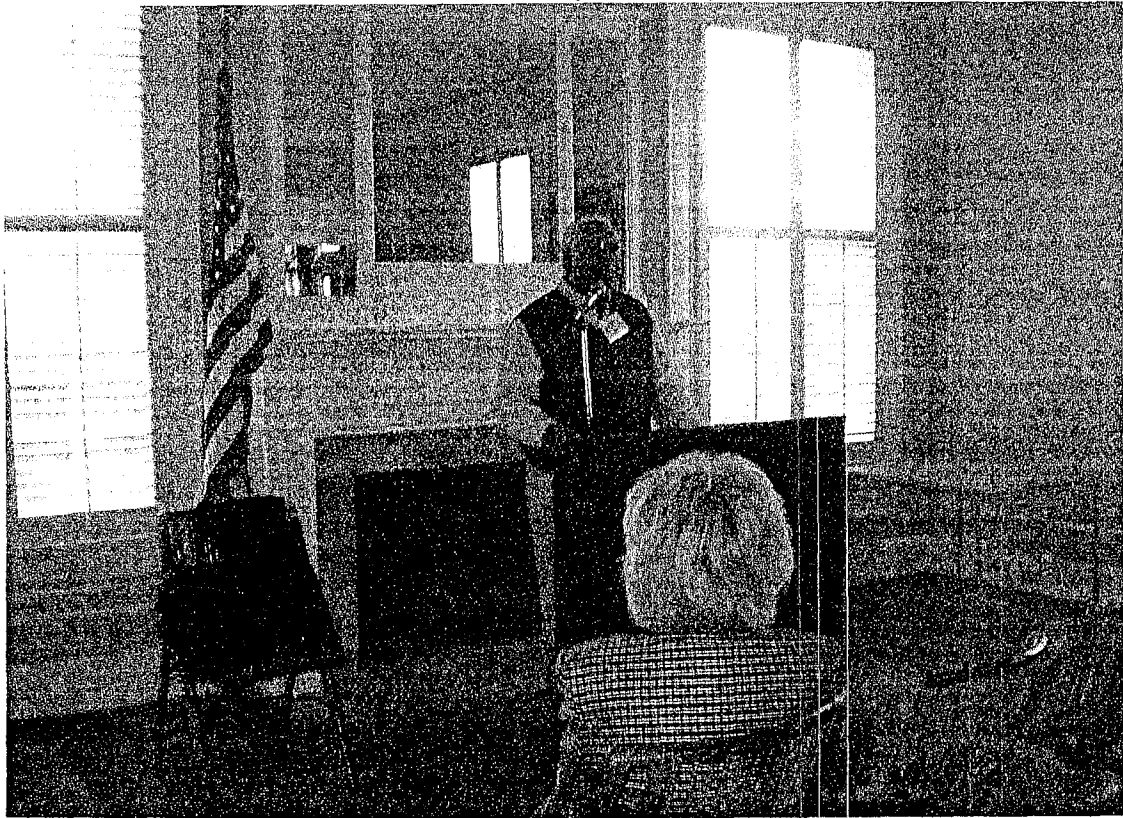
**Ark-La-Tex Genealogical Association**  
***BOARD OF DIRECTORS FOR 2009***



Recent installment of officers elected to the Board of Directors: L-R Raymon Owens, Doris Hunt, Edwina Wise, June Scholes, Cindy Millen, Glenda Bernard, and Jim Johnson



Reed Mathews and Herman Weiland preparing "The Genie" for bulk mailing.



Willie Griffin presides over December 2008 annual meeting.



2008 Christmas Party





2008 Christmas Party



2008 Christmas Party



2008 Christmas Party



2008 Christmas Party

## In Memory of Mrs. Betty Ann Green Kintzing



SHREVEPORT, LA - Mrs. Betty Ann Green Kintzing, 82, died peacefully January 23, 2009 after a brief illness. Visitation was at the Osborn Funeral Home on Sunday, January 25th from 2:00 to 4:00 pm. A funeral service was held at 10:30 am on January 26th at the First Lutheran Church on Line Avenue. Officiating was The Rev. Dr. Geoffrey Schmitt. Interment followed at the Forest Park Cemetery.

Mrs. Kintzing was a native of Shreveport and a lifetime resident. She was a lifelong active member of First Lutheran Church and had served many years as a Sunday School Teacher. She was active in the Vacation Bible School, Board Membership and serving anywhere else that she was needed. She was a retired elementary school teacher, having taught many years in various schools within Caddo Parish. In retirement, she worked in the Reading and Literacy Program at Centenary College, her Alma Mater. [A long time member of the Ark-La-Tex Genealogical Association, Shreveport.]

She was preceded in death by her husband, Robert H. Kintzing, her sisters, Edwina Green and Rutheen Tisdale and by her parents, Edgar and Anna Green.

Mrs. Kintzing is survived by her sons Dr. William Edgar Kintzing and his wife Patti of West Monroe, Louisiana and James Michael Kintzing and his wife Lisa of Keithville Louisiana; daughters Cassandra and her husband Leroy Barnidge of Indialantic, Florida and Robin and her husband Richard Spence of Wildwood, Missouri; and grandchildren Kathy McDonald, Jason and Jennifer Barnidge, Rose-Anne and Chris Frano, Greg Kintzing, Sidney Kintzing, Paul Kintzing, Crissa Spence, Casey Spence, Bridget Spence and Richard Spence; and great-grandchildren Brittany Moran, Olivia McDonald, Rose-Eve McDonald, J. P. McDonald, Madelyn McDonald, Elisa McDonald, Theo Frano and George Frano.

Source: The Shreveport Times, Obituaries, Monday, January 26, 2009, page 9A

## MARY JANE (ST. CLAIR) SIMEON

Submitted by Glenda Efferson Bernard<sup>1</sup>

*The life of the great grandmother of Glenda Efferson Bernard as related through interviews with her granddaughters, Ms. Grace Simeon Campbell and Mrs. Gertie Simeon Nachod; and grandnieces, Ms. Opal Efferson Duplessie and Ms. Sally Smiley Efferson.*<sup>2</sup>

Mary Jane (St. Clair) Simeon was born February 22, 1854, in New Orleans, Louisiana, it is believed. She told her family that her mother and father, John William St. Clair and Jane (or Margaret Jane) Moore, met and married on board the ship from Ireland to the United States. Ms. Mirth Simeon, daughter-in-law of Mary Jane Simeon, believed Mary's father was from Scotland and her mother was from Ireland. The family living with Mary Jane recalled her often reminding others of her Irish heritage. Mary had one older brother, John St. Clair, born about 1851. Mary's father, and later her brother, were both boilermakers, a trade in which craftsmen put together iron to make boilers.

When she was about eight years old, it is believed that Mary's parents died in a small pox epidemic in New Orleans. It was then that she went to live with William and Jeanette Smith, a family of bakers. Jane Moore St. Clair had previously cooked pigeons for the bakery's owner to eat.

It is not known if this Smith family was related in any way to the St. Clairs. The 1870 U. S. Census for Orleans Parish, Second Ward, shows Mary, age 16, still living with the Smiths and working as a domestic servant.<sup>3</sup> It was here that Mary must have learned the baking skills which she demonstrated later in life because she was well known for baking soda crackers and other breads and cakes for her family.

John "Johnny" St. Clair probably married Ellen Horan in 1880 in New Orleans.<sup>4</sup> The 1900 Federal Census for Orleans Parish, Louisiana, states that John and wife, Ellen

---

<sup>1</sup> Please submit any corrections or additions to the author at [gebernard@bellsouth.net](mailto:gebernard@bellsouth.net) or 2922 Chardonay Circle, Shreveport, Louisiana, 71106.

<sup>2</sup> Grace (Simeon) Campbell, Denham Springs, Louisiana, 06 July 2006, Mrs. Gertie (Simeon) Nachod, Baton Rouge, Louisiana, 19 August 2006, Ms. Opal (Efferson) Duplessie, Denham Springs, Louisiana, 08 August 2006, and Sally (Smiley) Efferson, Shreveport, Louisiana, 10 August 2006, interviews by Glenda Efferson Bernard; transcripts privately held by interviewer, 2922 Chardonay Circle, Shreveport, Louisiana, 2009.

<sup>3</sup> 1870 U.S. census, Orleans Parish, Louisiana, p. 105 (penned), line 11, Mary St. Clair; digital image, Ancestry.com (<http://www.ancestry.com>; accessed 01 January 2009); citing National Archives and Records Administration microfilm publication M593, roll 519.

<sup>4</sup> Orleans Parish, Louisiana, Marriage Licenses, John St. Clair and Ellen Horan, 1880; *Microfilm of New Orleans Records, 1870-1915* (N2000-14), Louisiana State Archives, Baton Rouge.

Horan, had seven children: Mary, Bertha, William, James, Joseph, Ellen, Clara and Margaret.<sup>5</sup> The enumerator stated in this census that John was born in Missouri. That mystery is yet to be understood.

Before marrying Mary, James Polk Simeon was living in New Orleans. The 1870 Poll Tax Records in Orleans Parish state that he lived between Julia and Thalia Streets, a few blocks off of Canal Street near the Mississippi River.<sup>6</sup> Mary and James were married at St. Theresa of Avila Catholic Church, 1410 Erato Street, in New Orleans, July 2, 1872. Witnesses were John William St. Clair, W. Allen and Bridget A. Mitchell.<sup>7</sup> Edward Spink, husband of James' sister, Caroline A. Simeon, was a witness to the issuance of the license, and the mother and father of James K. Polk Simeon were listed as Joseph Simeon and Caroline Very.<sup>8</sup> Family tradition, however, did not mention the name Very, but considered James' mother as Carolina Margarette Hill.

Their children, Jeanette, Mary Margaret, Rosa, Grace, and Katey were born in Orleans Parish, LA, while James Joseph, the youngest child was born in Livingston Parish, LA., in 1890. It is not known exactly when Mary and James Polk Simeon moved to Livingston Parish, but perhaps they desired to live near his relatives. His mother, Caroline Simeon, died November 22, 1880, while living with her daughter, Caroline A. (Simeon) Spiller. (Edward Spink had died and Caroline had married Blasingame Spiller.) In addition to Caroline, James Simeon's other siblings were Rose, who married Lionel Settoon and later, William Drucker; Margaret, who married William Dirks; and Azenor Bartholomew, who married Sarah Glasscock. All of the children settled in Livingston Parish, LA, with the exception of Margaret Dirks, who moved to Galveston, Texas<sup>9</sup> and later St. Louis, Missouri.

James P. and Mary Simeon lived on the old Gallup Place on Blood River in Livingston Parish, Louisiana. This was near the Patterson settlement and closer to their daughter, Rose (Simeon) Patterson (Mrs. Calvin). While living among the Pattersons, James and Mary's daughter, Mary Margaret, lost her first husband,

---

<sup>5</sup> 1900 U.S. census, Orleans Parish, Louisiana, population schedule, New Orleans, p.2 (penned), dwelling 34, family 44, John W. St. Clair, digital image, Ancestry.com (<http://www.ancestry.com> : accessed 14 January 2009); citing NARA microfilm publication, T623 roll 570.

<sup>6</sup> Judy Riffle, *Orleans Parish Poll Tax Rolls, 1869-1870*, (Baton Rouge: Le Comite des Archives de la Louisiane, Inc. 1996).

<sup>7</sup> Simeon-St. Clair marriage certificate (1872 marriage); issued 1872, by St. Theresa Catholic Church, 1410 Erato Street, New Orleans, Louisiana; original in possession of granddaughter, Mrs. Gertie Nachod, Baton Rouge, Louisiana.

<sup>8</sup> Orleans Parish, Louisiana, Marriage Licenses, J.P. Simmons and Mary St. Clair, 1872; *Microfilm of New Orleans Marriage Records 1870-1915*(N2000-14), Louisiana State Archives, Baton Rouge.

<sup>9</sup> 1880 U.S. census, Galveston County, Texas, population schedule, Galveston, p.25 (penned), dwelling 234, family 241, William Dirks; digital image, Ancestry.com (<http://www.ancestry.com> : accessed 14 January 2009); citing NARA microfilm publication, T9 roll 1305.



Henry Hamilton Smith, and later married Samuel A. Efferson.<sup>10</sup> Mary Margaret and Samuel Efferson were parents to six children, the last child being Lawrence Joseph Efferson. Arriving in the seventh month of his mother's pregnancy, Lawrence was born on a stormy night, September 28, 1909, weighing only three pounds. His mother, Mary, died the following day. Ms. Grace (Simeon) Campbell related the rest of the story as her mother, Ms. Mirth Simeon, remembered it:

*There was some discussion as to who would take the baby. Grandma (Mary Simeon) said that she would take him even though the doctor did not think it mattered since the baby was not expected to live. Grandma's Scotch-Irish determination assured the doctor that she knew how to take care of a baby; and, since he was not God, he did not have the right to say the baby would not live. Once home, Grandma took a feather pillow to lay the baby on and carried him on the pillow day and night close to her body for warmth. Grandma liked to tell the story that she fed him 365 cans of Dime Brand Condensed Milk with a teaspoon of whiskey in each can. She later was elated to show the doctor a strong and healthy baby after nine months of her care.*

Mary called Lawrence her "sugar baby" and affectionate Irish names such as "Dorsh" and "Dor'rah." James Polk and Mary Simeon cared for Lawrence until James' death January 12, 1917. At that time Mary and grandson, Lawrence, moved into the home of her son, James Joseph Simeon, and his wife, Mirth, (nee Smiley) near Springfield, Louisiana. Two of James' and Mirth's children, James Mateel and Grace Effie, were born in a house in Springfield on Simeon property that had been purchased from Elmo Riggs. This house was near the home of James and Grace (Simeon) McKigney. Grace McKigney was a sister to Mary Jane Simeon and their families visited frequently.

By 1920 the James Joseph Simeon family bought 40 acres in Frost, Louisiana, and moved there in order to be nearer Mirth's family, the Smileys. Besides Mateel and Grace, soon four more Simeon children were added to the family: Carlisle Carter, Edna Garnett, Elvie Gertie and Irma Gerline. Thus ten people (six children; parents, James and Mirth; grandmother, Mary, and nephew, Lawrence) occupied a rather small dwelling. According to granddaughter, Mrs. Gertie (Simeon) Nachod,

*In the beginning there were two bedrooms to our home and "Grandma" Simeon occupied one of them. Everyone else found a spot. After about 6 months, Uncle John Turnage helped Daddy build an additional room to the back of the house. Grandma shared her bedroom with Grace, but the room was "Grandma's room."*

---

<sup>10</sup> Livingston Parish, Louisiana, marriage certificate no. 181 (1901), Samuel Efferson and Mary Smith; Clerk of Court's Office, Livingston.

*Sometimes we would knock and go into her room. 'What do you children want?' she would ask. Oh nothing, Grandma, we're just looking. Then Grandma would say, 'You need to get your little bummies out of here.'*

Mrs. Nachod was not sure who "gave in" when the family decisions needed to be made, but the mother-in-law and daughter-in-law seemed to get along just fine in that small, single-family home with so many people living inside. "My mother was a great mother!" Mrs. Nachod said.

Ms. Opal Duplessie, a Smiley cousin, believes "Grandma" Simeon to be the matriarch of the Simeon family by this time. She recalls,

*Grandma Simeon was the first family member to use garlic. She would help Aunt Mirth with the cooking. I remember seeing her in her dresses to the floor; her white hair neatly pinned to her head. She would sit for hours in her rocking chair on the front porch. She loved to tat and would even use two shuttles at the same time to do the most beautiful tatting.*

Mrs. Nachod said "Grandma" Simeon would sometimes go to Springfield for knitting and tatting thread:

*She would bring all the kids something back. Once she brought rocking chairs for Gerline and me. There was a teddy bear for Lawrence from Mrs. Cullom in Springfield. Sometimes she may have peppermints in her pocket for us, but for herself, she frequently kept a piece of orange peel that had hardened in her mouth to chew.*

Ms. Duplessie was reminded of "Grandma's" love for Lawrence as well. She said, "She always saved a dollar from her pension check for him to buy cigars when he was a young man."

Mrs. Nachod and Ms. Campbell remember,

*Grandma Simeon always said she was Irish and she looked Irish, so some family members thought. Her Irish temperament was sometimes displayed. Once, she locked herself out of the screened porch. Mama and Daddy had gone somewhere and Grandma stayed with us kids. It was dark outside when Mr. Sellers, a community friend, came down to see Daddy. Grandma told him that someone was in the house because the latch was closed from the inside. 'Ms. Simeon,' he said, 'there's nobody in the house; you just locked yourself out. The latch just fell right into the hole when you shut the door.' 'Well,' she retorted, 'I didn't want anybody in THERE with me here with the children!'*

Ms. Sally (Smiley) Efferson says she can hear Grandma Simeon emphatically putting her foot down to outlandish childhood requests:

*She also didn't seem to bite her tongue. She would tell you how the cow chewed the cabbage...in no uncertain terms. And then in the next breath, she would say to Lawrence, (later Sally's husband), 'that's all right, son, Grandma will pick it up' when he left his clothes on the floor. With all of her doting on Lawrence throughout his life, I don't know why he wasn't spoiled, but he wasn't.*

Mary Jane (St. Clair) Simeon lived until March 18, 1932, when she died at the age of 78. The Simeon homestead is no longer standing, but the legacy of this stalwart, woman of substance, will forever remain and will be lived out by her descendants.

## ***Have You Paid 2009 Dues?***

Dues for the calendar year 2009 are now due. If you have not yet remitted your payment, we urge you to do so.

An application for new and renewing members was enclosed in the last Genie. It is very important that you complete this form and mail it with your remittance.

If you have sent your check without the completed application, please fill it out and send it or bring it to the next monthly meeting.

## RED LAND, LOUISIANA

By Dale Jennings

Red Land was never impressive in size, but provided the basic needs of its isolated farming community. The little northeast Bossier Parish town became more recognizable upon receiving its post office in 1879. However, not being on a railway, waterway or major roadway, Red Land never acquired a hotel or other such commercial enterprises as livery stable, drug store or bank. With the construction of the railroads through Bossier Parish in the 1880's, the overwhelming advantage went to towns that would become shipping and receiving points on the railway. A branch line of the St Louis & Southwestern, the "Cotton Belt," was routed parallel to the Red River from Arkansas to Shreveport in 1888. The new north Bossier "railroad towns" of Benton, Alden Bridge, Hughes Spur, Arkana and Plain Dealing sprang up along the track. The old towns of "old Benton," Collinsburg, Rocky Mount, Bellevue and Red Land saw their businesses, populations and even churches (and parish seat in the case of Bellevue) relocate to these new rail points. Red Land declined fast, hastened by the Red Land fire of 1890, which destroyed what was said to have been its last store. Swindle's store, then run by Henry Boggs, burned on the night of March 31, 1890, destroying with it the post office and Masonic lodge, with all their records. The Knights of Pythias, also housed in the Swindle hall, had already relocated to Plain Dealing, as had the proprietors Swindle and Boggs.

The *Biographical and Historical Memoirs of Northwest Louisiana*, published in 1890 just after the Red Land fire, implied that the fire marked the end of the town's commercial life: "Churches and store-houses have been moved away. The only remaining monument to Red Land's mercantile glory was consumed by fire on the last night of March 1890." The Southern Publishing Company of Nashville and Chicago did a remarkable job of compiling regional historical and biographical sketches - this volume covering the "thirteen counties" of Northwest Louisiana. The *Memoirs* provides valuable information on Bossier Parish (especially with the absence of an 1890 census), but was not accurate in every instance as will be seen. Red Land was devastated by the bypass of the town by the railroad, but the community's farm population should still have been able to support a local store.

John Swindle and his son-in-law William Benton Boggs had moved to Plain Dealing as stated, leaving Henry Boggs, probably a distant relative, in charge of the ill-fated store. There Swindle, in association with Boggs, opened the town's first drug store. Boggs pursued commercial interests in addition to becoming the town's first mayor, organizing and becoming president of its bank, and attaining the office of state senator. The Plain Dealing First Methodist Church, established during the town's first year (1888), inherited the Red Land Methodist's church edifice and its benches, organ, etc. Boggs purchased its building and lot from the Methodist Bossier Circuit in 1889 for \$135.00. In December 1891, Swindle sold the old store site and adjoining blacksmith shop lot, as well as his seminary lot 1 and 2 parcels, to Doctor T. N. Keoun for \$50.00. The conveyance made clear that this did not include that part of Lot 1 sold to G. W. Phelps, "where old Phelps Store stands," or that part



of Lot 2, "where the Power Grocery Store stood." Two years later, W. B. Boggs sold the old Power lot to Keoun for \$5.00. A later conveyance indicates that the Crawford (old Crawford & Covington) store building on Lot 2 was still standing.

Red Land, although reduced to a tiny community center, retained its post office for two more decades after the fire. Postal records show that Lucy Baird was succeeded as postmaster in March 1891 by William C. Rogers. He served until October 1892 when James L. Crawford took office. Crawford, son of Joshua B. Crawford and a career merchant himself, was followed by George W. Phelps in July 1894. Phelps was succeeded by his widow, Sophronia, in July 1899 following his death in February. She served until the office was closed on April 15, 1909, the casualty of Rural Free Delivery out of Plain Dealing. Small community center post offices were usually located in the local store where the proprietor was also the postmaster and could serve both the store and postal patrons. The Crawfords may have continued to operate their store during this period. The Phelps family, who were primarily farmers, probably never went back into the store business. Sophronia was identified as a farmer in the 1900 census, which showed no merchants at Red Land. Mrs. Elizabeth Matlock Wise was born in January 1899 and lived in the Red Land- Walkers Chapel area. In the mid-1970's, she wrote a column for the *Bossier Banner-Progress* entitled, "I Remember." She recalled that when she was a young girl, there was a post office at Red Land, "in a little building in the corner of the front yard of Aunt Pony Phelps place."

In October 1911, the J. B. Crawford heirs sold the Phelps grocery store lot to Thomas W. Butler for \$5.00. Butler had already acquired the Wyche place and most of the other old commercial properties on both the seminary and Martin tracts. He sold all, including the Swindle, Phelps and Power store lots, to Doctor Rupert Butler the following month. In 1912, the Crawford heirs sold their old store lot, "including the store house thereon," to Wilson Covington's brother, Madison "Mat" Covington, for \$10.00. Although never to regain its "mercantile glory," Red Land is known to have had three other little stores, the first of which was built in 1925.

Mrs. Lillian Farrington, a great granddaughter of Moses S. McDonald, has supplied some information from her knowledge of the two more recent stores at Red Land. In their day, the "Rodgers Store" and the Ivor Barnett store were each located just east of the present community center building at the junction of Highway 157 and Redland Road. The former was on the southeast corner and the latter on the southwest corner. However, there was an earlier store there. Elizabeth Wise told in her column how she and her husband, Shelley Wise, had bought land at Red Land and in 1925 built a little country store on it. It was next door to the school between there and the corner. They had moved off their farm near Walkers Chapel to live here and to run the store. After three years, in 1928, Mrs. Wise's health was declining and they sold the property to the D. J. Barnett family, and moved back to the farm. The next store was said to have been built at about this time by John and Mamie Hudson on their property on the opposite corner. The Hudsons ran the little store until 1945 when they sold the property and store to Henry Rodgers. The Rodgers lived in the store from which they sold gas and a few groceries until the building burned in the early 1960's. The Barnett store was built on the opposite side



of Redland Road from the Rodgers store site by Mr. Ivor Barnett, son of D. J. and Florence Barnett, in about 1968. It was a nice little grocery operated by Ivor and his wife, Juanita, for maybe eight or ten years. At this time she got tired of running the store and they decided to close it down. The store building was moved and a brick home built there. It is now the residence of their son, Doc Ivor Barnett, who has retired and returned to Red Land. This was the last store at Red Land.

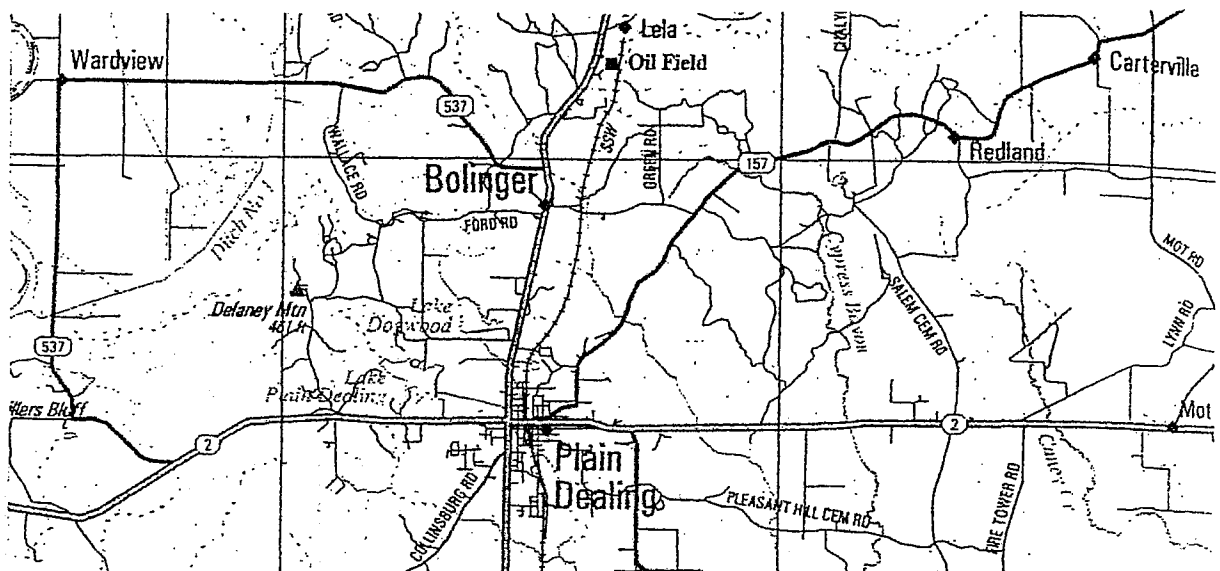
The *Biographical and Historical Memoirs* misleads its readers in saying that the Red Land Seminary building then "stood alone among the older trees, keeping company with the cemetery where sleeps many of the pioneers of this section." There were still buildings nearby to include the Salem Baptist Church, and the cemetery was at the old church site quite a distance away. Improvements in the public schools in the 1880's had seen the decline, then the closure of the seminary by 1890, and the ultimate utilization of its building by the parish school system. According to a July 30, 1959, article in the *Bossier Banner-Progress*, Mr. Andrew Johnson's mother had attended Red Land Seminary, and he the public school. (Margaret Covington Johnson, daughter of Wilson's brother, Robert Mial Covington, was born in 1861, married Francis Marion Johnson in 1880, and their son William Andrew Johnson was born in 1884) In about 1911, the Red Land Consolidated School was created by combining the neighboring schools of Red Land, Carterville, Line, Heifner, Pleasant Hill and Mot (Mott). Over the years, the seminary trustees had sold off most of its thirty-six lots, mostly in blocks of lots to various individuals. In 1911, the Red Land Seminary trustees donated its last five acres, including the lot containing the school building to the Bossier Parish School Board. The old seminary building, which was being used for the Red Land school, was combined into the new and larger consolidated school facility. Mrs. Wise and her children all attended school there. She recalled that it was a graded school with about nine rooms and as many teachers. Most of the teachers boarded with the Wise's neighbors, "Uncle Marion" and "Aunt Mag" Johnson, who lived on the seminary tract on the other side of the school. After the seventh grade, students had to go to Plain Dealing to attend high school. The school was closed in 1934 and all the area's students were bused to Plain Dealing. The building fell into disuse and was later destroyed.

A revitalization of the northeast Bossier oil boom in the 1950's placed the old Red Land Seminary tract in the Red Land oil field. Wells were being drilled on the Goodwin, Johnson, Covington, Roberson and Keoun properties in the vicinity of the seminary tract. The Fair Oil Drilling Company was desirous of leasing from the tract's mineral rights holders. By agreement, the five acres donated to the Bossier Parish School Board by the Red Land Seminary was to revert back to the donor when no longer needed for school purposes. Another twelve acres was sold that year by the seminary trustees to Mr. J. J. Roberson, who later sold it to the school board. That property was also returned to the Red Land Seminary, giving it a total of seventeen acres. By the mid-1950's, there were still two surviving members of the old seminary board of trustees, Mr. J. D. McKellar of Plain Dealing and Robert E. Matlock of Mot. Fair Oil and the trustees agreed to a lease with a \$1,000 bonus, the money to become a fund for the upkeep of the Salem Cemetery. However, it was decided that because legalities were vague and the royalties to follow would be substantial, the Red Land Seminary should be formally and legally reconstituted with a full board of

trustees. After much effort, the seminary was rechartered by the courts on April 22, 1958. Seven additional trustees were appointed by the surviving board members. They were Clines Matlock, W. H. Rogers, W. A. Johnson, F. W. McKellar, J. M. Covington, G. T. Mays and S. J. Weeks. The charter for the Red Land Seminary, Inc., specified that the oil revenues would be used for the general welfare of the membership. This was limited to families living within a five-mile radius of the seminary site and paying a membership fee of \$1.00. A community center building was constructed on the Red Land Seminary Lot #13 where the old school had stood. Its dedication service on May 30, 1959, was attended by about eighty people.

In recent years, the Red Land Seminary, Inc., became inactive. A letter dated August 18, 1998, from the Louisiana Secretary of State to the Bossier Parish Clerk of Court revoked the charter of the Red Land Seminary, Inc., for failure to file annual reports for three or more consecutive years. The community center, once the scene of many civic and social events, is presently under the custodianship of the church and is little used. The Red Land community had been strengthened by its church and seminary association membership, but was sustained even more by the neighborhood cohesion common to most rural communities – and through marriage. Over the years, new arrivals to the area have married into the families preceding them so that the blood of the earlier families still flows through the veins of the present generation. Now, with the ease of transportation and the dispersal of families, communities have grown more regional. A representation of the greater north Bossier Parish community is likely to be found interacting over coffee or lunch at Annie Lou's Giles Snack Shop in Plain Dealing.

Red Land lives on in the memory of many of its former residents and through the generational retelling of life as it once was in that little town and community.



Map showing Red Land (Redland Road running south from Red Land not marked)

## ALTGA's Horn-Book: "Putting Together Those Darn Footnotes"

---

*For presentation and discussion at the  
ALTGA General Session of 10 January 2009.*

*© Philip Adderley, 2009<sup>1</sup>*

**M**Y 12<sup>th</sup> grade English teacher was Miss Mary Sue. Fellow 11<sup>th</sup> graders and I dreaded the results of senior year registration. There were fortunate lucky souls who did not get scheduled for one of her classes, so we thought then. My luck failed—so I thought then.

For most of the year we struggled through a maze of Chaucer and Shakespeare and other wholesomely worded things. She then discussed with twinkling eyes and a slightly crooked half smile the dreaded term paper assignment complete with footnotes, to be properly formatted and applied. The room hushed. Edgar Allen Poe's raven smirked. As figuratively terrifying as the ordeal was, Miss Mary Sue did us a major service, though it took college studies for me to appreciate what she did for me. I cannot thank her enough.

We have in our field a tour de force in terms of scholarly historical and genealogical work. She is Elizabeth Shown Mills. There is no equal, in my opinion, to her discussion of evidence analysis and the fundamentals of citation in her latest work, *Evidence Explained! Citing History Sources from Artifacts to Cyberspace*.<sup>2</sup> If I knew that all who read this article had already read her book, I would stop here, for what I say below is a weak rendition of a few of her key points in my own words. Read her book or else hear my own testament to the value and art of putting together those darn footnotes. As for Miss Mary Sue, well, she is retired now, but I still try to visit her each time I return to Alabama.

I keep highly detailed day-to-day footnotes for at least four reasons.

First, for myself, I want a clear roadmap that takes me back to whatever source I used. I want to know where the information can be located again, say ten years from now, whether I incorporate it into my family's history or into a research report for a client. For my readers: they deserve to know upon what information my conclusions were based. My reasoning may have been flawed. My interpretations may need to be changed if new sources, or new interpretations of existing information, come to light. My readers and I deserve to know where the raw information can be found—not just any form of it, but the *exact* form that I used.

Second, I must credit others for any work and conclusions they reached that influenced my own work or conclusions. It is not simply a matter of citing their works when I quote them, which are certainly necessary to avoid complications such as copyright infringement. There are higher ethical needs to acknowledge others' contributions even if legal obligations do not call for them.

---

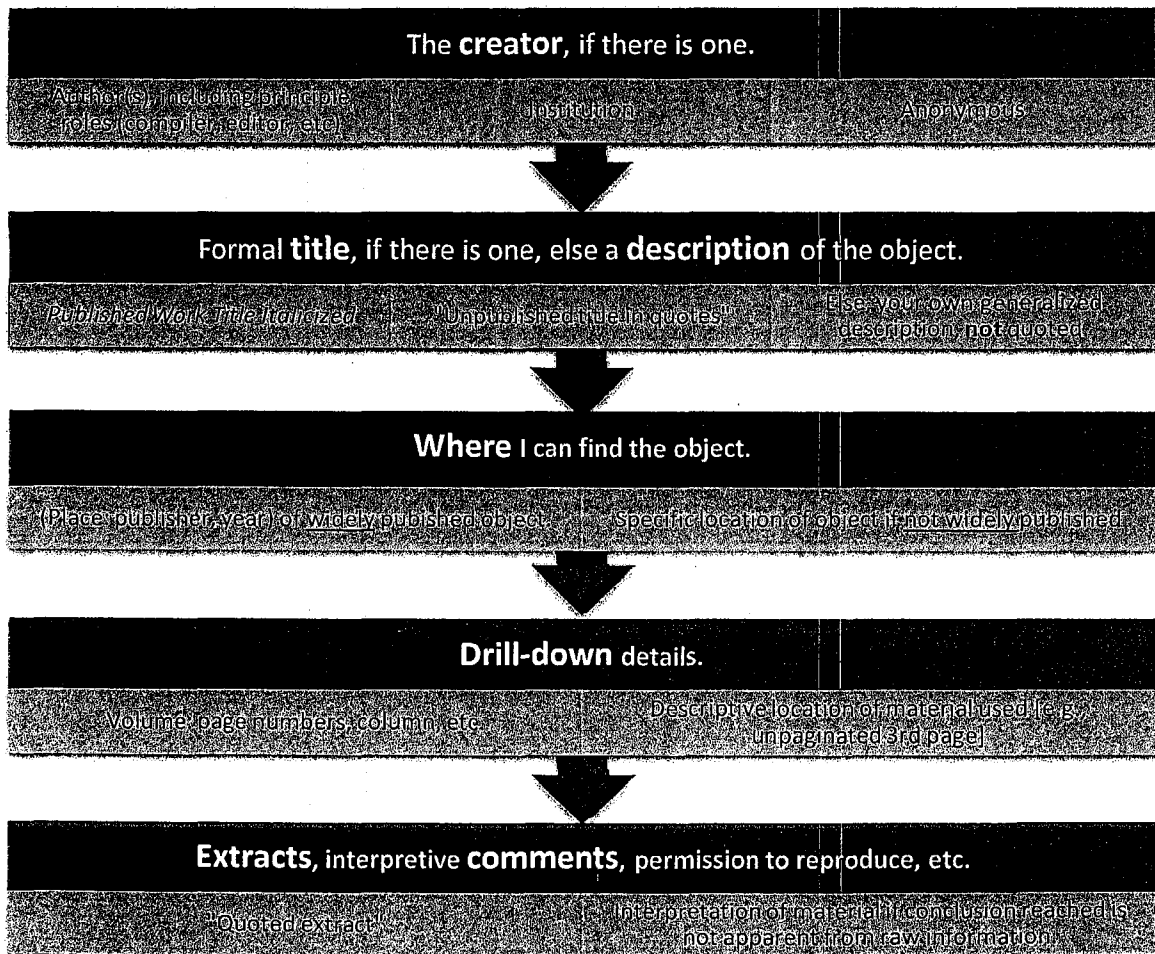
<sup>1</sup> Permission is granted to reproduce this article for educational purposes. Email contact: phil@311research.com.

<sup>2</sup> Elizabeth Shown Mills, *Evidence Explained! Citing History Sources from Artifacts to Cyberspace* (Baltimore: Genealogical Publishing Company, 2007), especially pages 1-90.

Third, we need permissions of the creators of their works when we quote verbatim large amounts of material. Sometimes we must overtly include a permission statement as part of a footnote, or else within the body of our work.

Fourth, the footnoting process is not a mere robotic exercise in formatting source descriptions. Rather, it is more of an art form that captures not only the specifics of what we used, but also our thoughts about the reliability or credibility of the information whenever it is appropriate.

If one understands *why* s/he needs footnotes, then, in my opinion, at least 90% of the time s/he will be able to construct—without aids—good footnotes that include all the main elements by using the following basic sequence. It will work for a range of items: loose documents in a courthouse legal case file, many authored works in print or on the Internet; inanimate objects like the engraving on the bottom of a great aunt's silver platter, etc. This should get you started, but Elizabeth's work rocks—use it on a regular basis and you will be glad you did.





## **Guardianship of Helen Mallory, Minor**

*[Note: This information was recorded from Book I; Page 2 and 3; A-117, 118 and 119; Columbia County Courthouse - Probate Court Record in Magnolia, AR; February 13, 1922]*

### **A-117**

#### **In the Matter of the Guardianship of Helen Mallory, Minor.**

Petition of Emere Sanders for letters of Guardianship, with bond, approved and ordered issued.

This cause coming on to be heard on this 13<sup>th</sup> day of February, 1922, the same being a day of the regular February term of this Court, the same is presented to the Court upon the petition of Emere Sanders and the oral evidence of the petitioner and Arthur Sanders, for its consideration and judgement.

The court finds that the petition of Emere Sanders, hein, was filed in vacation that the same is duly verified: that the petitioner is the mother of Helen Mallory, a minor of the age of 13 years; that said minor is the owner of certain real property in Columbia County, Arkansas, and that it is necessary for the proper preservation of said minor's estate, that a guardian be appointed.

It is therefore considered, ordered and adjudged by the court that petitioner herein, Emere Sanders, be and she is hereby appointed guardian for the person and estate of Helen Mallory, minor, and upon her filing a good and sufficient bond in the sum of One Hundred Sixth Dollars (\$160.00), the clerk of this court is hereby directed to issue to her letters of guardianship.

Whereupon the bond of Emere Sanders, the petitioner herein, in the sum of One Hundred Sixty Dollars (\$160.00), with C. L. Smith, as surety thereon, is presented to the court and the same is hereby approved by the court and ordered placed on record. It is further ordered by the court that letters of guardianship herein issue.

### **A-118**

#### **In the Matter of the Guardianship of Helen Mallory, Minor. Emere Sanders Guardian.**

Petition for authority to lease land. Order to lease.

On this 13<sup>th</sup> day of February, 1922, this cause coming on to be heard upon the petition of Emere Sanders, Guardian for Helen Mallory, a minor, the same is submitted to the court upon the petition of petitioner



and affidavits of the petitioner herein, and Arthur Sanders, for its consideration and judgement, and the court finds that the petitioner, Emere Sanders, has been duly appointed guardian for the person and estate of Helen Mallory, a minor, and that she has duly qualified as such guardian, and that her bond, as such, has been approved by the court.

The court further finds that said minor, Helen Mallory, is the owner, in fee simple, of an undivided one-fifth interest in and to the SW  $\frac{1}{4}$  of the SW  $\frac{1}{4}$  of Section 11, Township 18 South, Range 21 West of the 5<sup>th</sup> Principle Meridian; that it will be for the best interest of said minor and her estate to lease said interest in said land for oil, gas and minerals.

It is therefore considered, ordered and adjudged by the court that upon the filing of a bond in the sum of \$160.00, with good and sufficient security, conditioned upon the faithful discharge of her duty as guardian in leasing said land, with fidelity to the interest of said minor and faithful accounting for the proceeds from said lease and any other funds coming into her hands under and by virtue of this order, and upon the approval of same by the court, the guardian herein, Emere Sanders, is hereby authorized, empowered and directed to lease, for oil, gas and minerals, the undivided one-fifth interest in and to the SW  $\frac{1}{4}$  of Section 11, Township 18 South, Range 21 West, of Helen Mallory, minor, and report her doings in this matter to this Court for confirmation and approval.

#### **A-119**

#### **In the Matter of the Guardianship of Helen Mallory, Minor. Emere Sanders Guardian.**

Order Approving Bond and Confirming Lease.

Comes Emere Sanders, as guardian of the person and estate of Helen Mallory, a minor and presents to the court her bond in the sum of \$160.00 with C. L. Smith, as surety thereon, which is by the court approved and ordered recorded.

And on the same day said guardian presents to the court an oil, gas and mineral lease for the undivided one-fifth interest in and to the SW  $\frac{1}{4}$  of Section 11, Twp. 18 South, Range 21 West of Helen Mallory, minor, executed by said guardian, Emere Sanders, in favor of C. L. Smith, which is by the court examined, approved and confirmed in all things.

**Recorded: 27 Feb 2008 by Willie and Patricia Griffin,**  
**from Courthouse Records**

## Welcome to the Broadmoor Branch Genealogy Department

If you haven't visited the Shreve Memorial Library Broadmoor Branch Genealogy Department recently, now would be a good time to plan a visit to the Genealogy Department and meet the New Genealogy Department Librarian, **Ms. Lise' Taylor** (Lise' is pronounced Lisa). Lise' comes to the Broadmoor Genealogy Department from the Cedar Grove Branch Library; there she served as Branch Manager for the past three years.

Prior to serving as Branch Manager, she was the Circulation Manager at the Main Branch of Calcasieu Parish in Lake Charles. Lise' received her Master of Library and Information Science from LSU in Baton Rouge, LA.

The **Ark-La-Tex Genealogical Association** welcomes Lise' to the Broadmoor Branch Genealogy Department.

The Genealogy Staff members [Brenda Williams, Joe Slattery, Ellie Sockrider, Leslie Dennis, Alynnetta Beck and Reed Mathews] are thrilled to have her with them and hope you'll stop by and say hello!

*Welcome*

*Lise' Taylor*

**Genealogy Librarian**

# **History & Hauntings of Illinois**

## **CURSE OF KASKASKIA**

### **Illinois' Lost Capital**

**Submitted by Harry Lazarus**  
***(Reprinted with permission)***

[Note: Two of my ancestors were born in Kaskaskia, IL. Entienne Goveereau (born 1736) my 8<sup>th</sup> great-grand father on my mother's, mother's father's side and another of my 8<sup>th</sup> great-fathers, Jean Thomure LeSource (born about 1740) on my mother's, mother's, mother's side. In 1995, I visited the Kaskaskia Bell Memorial site mentioned in the second paragraph of the "Curse of Kaskaskia". As I was surfing the net in late December 2008 I ran across this story, emailed the author, Troy Taylor, and got permission to publish this article in the GENIE. Website: [www.prairieghosts.com/Kaskaskia.html](http://www.prairieghosts.com/Kaskaskia.html)]

A new settlement was started along the western edge of the Illinois region in 1703 and it was called Kaskaskia. For more than a century, it was the commercial and cultural capital of Illinois. Little of the city remains today, although it was once a prosperous and thriving settlement. Strangely, many believe that the city was destroyed because of an old curse, leaving nothing but a scattering of houses, and ghosts, behind.

Many years ago, Kaskaskia was a part of the mainland of Illinois, a small peninsula that jutted out just north of the present-day location of Chester. There still remains a portion of what was once Kaskaskia, which is accessible from Illinois today, but the peninsula is now an island, cut off from the state by a channel change in the Mississippi River that took place decades ago. Much of the area was flooded at that time and it is now largely a ghost town, consisting of a few scattered homes and a handful of residents.

The remains of the town, while still considered part of Illinois, can now only be reached from Missouri. There is an ancient bridge between Ste. Genevieve and St. Mary's which crosses the Mississippi to the island. It is the only physical link this desolate spot has to either state. There are only a few scattered buildings left here, including the Kaskaskia Bell Memorial site, which indicate that the city ever existed.

The vanished town was founded by the French settlers and it was once considered the "metropolis" of the Mississippi Valley and the main rendezvous point for the whole territory. It also served as a springboard for explorations to the west and in time, became the state and territorial capital of Illinois.

The area grew and in 1804, Kaskaskia became a land-office town and the territorial capital in 1809. The town was made up of stone mansions and homes of typical French architecture, which according to contemporary sources, were inclined to be "shabby".

Half of the inhabitants were French or French-Indian mixtures who raised cattle, horses and hogs and worked small farms. The city also boasted a post office and a number of general stores, a hat shop and three tailor shops. There was only one tavern in town and it was said to be constantly overcrowded by state officials, soldiers, adventurers and land speculators.

In 1818, the state capital was moved to the new city of Vandalia, in the central part of the state. Illinois had just gained its statehood and legislators began searching for a place that was more centrally located than Kaskaskia. The move was made with some regret... but of course no one knew that the river city would be destroyed in just a few more years.

About 25 years later, the waters of the Mississippi began to shift in their channel and flooding attacked the edges of Kaskaskia, destroying homes and farms. By 1881, the peninsula was completely cut off by the river and the city nearly ceased to exist.

But what happened to change the fates of this once marvelous city? Was it simply nature taking its course.... or were more dire circumstances behind the demise of Kaskaskia?

According to some, there was a terrible curse placed on the town many years before which predicted the city and the land around it would be destroyed and that the dead would rise from the graveyard in eternal torment. Believe it or not, these events actually came to pass!

The legend of the curse dates back to 1735, when Kaskaskia was a thriving community of French settlers. There was a wealthy fur trader who lived there and who is remembered only by the name of Bernard. He lived in a luxurious stone home in the company of his daughter, Maria, a beautiful young girl who was the pride of his life.

Bernard owned a trading post on the edge of the city and he frequently hired local men, both French and Indian, to work for him. Most of the Indians were hired to do the menial work, as Bernard cared little for them and considered them a "necessary evil" at best. At some point, he hired a young Indian to work for him who had been educated by French missionaries. As the two spent time together, Bernard actually began to become fond of the young man, at least until he realized that his daughter had also become fond of him. In fact, Maria and the Indian had fallen in love.

When Bernard learned this, he became enraged. He immediately fired the young man and spoke to friends and other merchants, who then refused to put him to work. Eventually, the young man left town. Before he left, he promised Maria that he would return for her.

Needless to say, Maria was heartbroken by her father's actions. She pretended that nothing was wrong, so as to not arouse her father's curiosity, but deep down, she secretly hoped, waited and watched for the return of her lover. Several local men attempted to court her, but while she feigned interest in their attentions, she secretly pined away for the young Indian.

A year passed and one day, a group of unknown Indians visited Kaskaskia from the west. Among them was Maria's lover, wearing a disguise so that he would not be recognized by Bernard. Maria and the Indian arranged to meet in secret and then quickly fled Kaskaskia to the north.

When Bernard learned what had happened, he vowed to seek vengeance on the young man. He gathered several of his friends and began hunting his daughter and her lover. They found them and captured them near Cahokia. Maria begged her father to understand but he refused to hear her cries. He decided to kill the young man by drowning him. The Indian was silent as the rough trappers tied him to a log and then set him adrift on the Mississippi. Just as they placed him in the water, he swore a terrible curse...

He swore that Bernard would be dead within the year and soon he and Maria would be reunited forever. Kaskaskia was damned and would be destroyed, along with all of the land around it. The altars of the churches would be destroyed and the homes along with them. Even the dead of Kaskaskia would be disturbed from their graves!

The river then swallowed the Indian beneath the muddy water. He was silenced, but the curse eventually came to pass. Within the year, the prophecy began to come true. Maria became distraught over her lover's fate and refused to leave the house or eat. She soon died and rejoined her lover on the other side. Bernard became involved in a bad business deal and challenged the man whom he believed to have cheated him to a duel. Bernard was killed by the other man.

And the river began to seek the Indian's revenge on Kaskaskia. The river channels shifted and flooded the peninsula over and over again until, by 1881, Kaskaskia was completely cut off from the mainland. The homes and farms were abandoned and people began to slowly leave the island. The church was moved over and over again, but it did no good. The altar was eventually destroyed in the 1973 flood. By this time, Kaskaskia had become a desolate ghost town..... but not before the Kaskaskia cemetery was washed away and the bodies of those buried there erupted to the surface and then vanished beneath the river.

Cursed? Perhaps... but Kaskaskia is not forgotten. It remains today not only as a scattering of buildings, but also as one of the greatest legends of early Illinois!

***COPYRIGHT 2000 BY TROY TAYLOR. ALL RIGHTS RESERVED.***



# ***Article Submissions***

Articles for publication in ALTGA Publication [The Genie] are welcomed from ALTGA members and others interested in the Ark-La-Tex area family history research. The Association publishes articles concerning genealogical record groups, collections, research techniques, databases and websites related to this area's genealogy and history, as well as articles about other genealogical news.

Proposed articles may be sent to ALTGA in care of the Editor at Post Office Box 4463, Shreveport, Louisiana 71134-0463 or electronically to wraygriffin3@bellsouth.net. Acceptable formats include Microsoft Word and Publisher. The Editorial committee reserves the right to accept or reject any submitted article and to make changes in punctuation and grammar in articles accepted for publication.

Articles submitted electronically should not contain any formats, such as tabs or indents, or any embedded objects or images. Images, such as clip art or photographs, should be sent as separate files or attachments. Photos pertaining to this area may be submitted for consideration. Acceptable formats for images include JPEG, GIF, and TIFF.

## ***Deadlines***

First Quarter Issue	15 February
Second Quarter Issue	15 May
Third Quarter Issue	15 August
Fourth Quarter Issue	15 November

If you have an item of historical or genealogical interest for the Arkansas, Louisiana or Texas researchers, about upcoming events, new resources, research tips and/or other information, please contact me. Please make sure to include a subject line with the words "For the Genie."

## **EXCHANGE PERIODICAL REVIEW**

Combined by Constance Whatley

Many of the periodical we receive, in exchange for "The Genie" provides up-to-date ideas on how to solve your research challenges. Always search the periodical published in your geographical interested area, but don't overlook other periodicals that may include articles of great interest to your research or about families that have migrated. These periodicals are located at the Broadmoor Branch Library, Genealogy Section, Shreveport, LA.

Le Raconteur, Volume XXVII, Number 4, December, 2008, published by Le Comite des Archives, Baton Rouge, LA, pages 228-230, lists slave owners in Pointe Coupee as of May 1872. This list was translated by Judy Riffel.

On pages 244-254 is a listing of 1880-1896 St. Martin Parish Voter Registration book. This list includes the ward, precinct, date of birth, years residing in the state and parish and ethnicity of persons.

Our Heritage, Volume 29, Number 4, November 2008, published by Van Zandt County Genealogical Society. Canton, Texas, pages 125-126 in and article that might be of interest to some of our members. The title is, "How Did You Get Your Name."

Rabbit Tracks, Volume 26, Number 3, Fall 2008, pages 22-23, published by the Conejo Valley Genealogical Society, Thousand Oaks, CA is a short article with the title "Be Kind to Library Books-A: Tip To Take With You To The Library." This short article illustrates the use of an opaque, white drinking straw placed in the centerfold (technically Called the gutter) of a book.

Our Heritage, Volume 30, Number 1, February 2009, pages 7 and 8, published by Van Zandt County Genealogical Society, is an interesting article by Marion T. Lane, entitled, "Little Known African American History Facts." On page 32 of this publication are some great quotes from Will Rogers. I don't make jokes. I just watch the government and report the facts. Never slap a man who's chewing tobacco.

## WHISPERING PINES CEMETERY, BASTROP, LA

©Isabelle Woods

DIRECTIONS: From Morehouse Parish Court House, Bastrop, LA, go south for .7 of a mile on Highway 165 to Martin Luther King Drive and turn left. Drive for .9 of a mile on Martin Luther King Drive. The Whispering Pines Cemetery appears on your left.

ID	NAME (Last, First, Middle)	PRE/SUFFIX	BIRTHDATE	DEATHDATE	INSCRIPTION/NOTES
199	ATKINS, CAROLYN S.	MRS.		18 MAY 1990	OBITUARY, BASTROP (LA) ENTERPRISE DTD 21 MAY 1990
132	ATKINS, HERIE	MR.	10 MAR 1892	— JAN 1973	FP: PARENTS-MR. & MRS. PINKY AND WILLIAM ATKINS
	75 ATKINS, ISAAC		16 SEP 1900	27 SEP 1975	
133	ATKINS, MARTHA CROWDER		02 AUG 1896	21 FEB 1995	FP: PARENTS-MR. & MRS. DINAH AND ROBERT CROWDE
134	ATKINS, RICHARD W.	(SR.)	31 AUG 1909	06 DEC 1994	FP: PARENTS-MR. & MRS. EMMA AND ANDREW ATKINS
	31 ATKINS, RICHARD W.	JR.	27 SEP 1937	06 SEP 2001	REAR OF HEADSTONE, "JUNIOR."
185	ATKINS, SAMUEL			?? JAN 1988	OBITUARY, BASTROP (LA) ENTERPRISE DTD 28 JAN 1988
149	BAKER, JUDY			?? JAN 1984	OBITUARY, BASTROP (LA) ENTERPRISE DTD 25 JAN 1984
66	BAKER, SPENCER		08 APR 1912	30 DEC 1986	CPL U S ARMY WORLD WAR II
72	BLACKMON, ARSTENA		16 FEB 1921	BLANK	WIFE. DUO WITH MARSHALL BLACKMON
71	BLACKMON, JAMES EDWARD		12 SEP 1955	31 ??? 1991	AGE 36. MONTH OF DEATH ILLEGIBLE ON FHM
73	BLACKMON, MARSHALL		24 OCT 1910	12 JUN 1964	HUSBAND. DUO WITH ARSTENA BLACKMON.
	7 BLACKMON, RICHIE?		06 APR 1926	BLANK	FIRST NAME ILLEGIBLE
178	BLUEFORD, ANNIE H.			?? MAR 1977	OBITUARY, BASTROP (LA) ENTERPRISE DTD 03 MAR 1977
	36 BONNETT, IDA L. MCINTOSH		07 OCT 1901	05 JUN 1990	
146	BOSWORTH, LONNIE			31 MAR 1983	OBITUARY, BASTROP (LA) ENTERPRISE DTD 07 APR 1983
109	BRANDLEY, CHARLES LAVELL		07 NOV 1976	13 OCT 2003	AGE 33. FUNERAL HOME METAL MARKER
110	BRANDLEY, CHARLIE		11 APR 1902	20 MAR 2004	
162	BRANDLEY, DAVID			16 JUL 1980	OBITUARY, BASTROP (LA) ENTERPRISE DTD 18 JUL 1980
	88 BRANTLEY, OSCAR		05 NOV 1914	04 MAY 1984	
	70 BRIDGES, (D)ORA ?		1917	1994	FIRST LETTER OF FIRST NAME ILLEGIBLE.
159	BRIGHT, FLORENCE	MRS.		17 FEB 1978	OBITUARY, BASTROP (LA) ENTERPRISE DTD 23 FEB 1978
147	BROOKS, HORACE LEE			31 JAN 1983	OBITUARY, BASTROP (LA) ENTERPRISE DTD 03 FEB 1983
200	BROWN, DORIS J.			21 JAN 1990	OBITUARY, BASTROP (LA) ENTERPRISE DTD 23 JAN 1990
113	BROWN, HENRY		04 JUL 1906	21 AUG 1988	
210	BROWN, LEOLA	MRS.		02 NOV 1986	OBITUARY, BASTROP (LA) ENTERPRISE DTD 05 NOV 1986
172	BROWN, LOUIS			13 NOV 1979	OBIT, BASTROP (LA) ENTERPRISE DTD 16 & 17 NOV 1979
	28 BROWN, MATTIE		1908	1984	
191	BROWN, NADINE			05 APR 1991	OBITUARY, BASTROP (LA) ENTERPRISE DTD 09 APR 1991
186	BROWN, ROBERT	SR.		07 NOV 1994	OBITUARY, BASTROP (LA) ENTERPRISE DTD 11 NOV 1994

MOSES CAIN



## OBITUARY

"...MR. MOSE CAIN, prominent businessman, native and well known citizen of Bastrop, Louisiana, was born in Ward One, Bastrop, Louisiana.

"He was the second son of seven children born to Moses and Mattie Bell Cain. At an early age he joined the Alexander C.M.E. Church under the pastorate of Rev. A. J. Brown. Later his membership was transferred to St. Mary C.M.E. Temple then under the pastorate of Rev. P. G. Griffin.

"His education was received in the public schools of Morehouse Parish where he excelled in mathematics.

"His marriage to the former Lucinda Archie was blessed with two children: a daughter, Vera Geraldine, and a son, Carl Reginald (deceased).

"Brother Cain served many years as a dedicated member of the St. Mary C.M.E. Temple, rendering distinguished and valuable service as a steward, trustee, class leader, a member of the Board of Christian Education and the Finance Committee. He worked unselfishly with all the Auxiliaries of the church. He also served as treasurer of the Masonic Brooklyn Lodge No. 67.

"Mr. Cain possessed unusually strong character. When he thought the issue was right, his moral beliefs always emerged.

"He was called to rest on August 30, 1970.

"Survivors are: a wife, Mrs. Lucinda A. Cain, Bastrop, Louisiana; a daughter, her spouse, and a granddaughter: Mrs. Vera C. Mitchell, Attorney Nathan H. Mitchell, Linda Suzanne Mitchell, New York; three sisters: Mrs. Minder Wilson, Mrs. Everline Starks of Oakland, California, Mrs. Minnie Adams, San Antonio, Texas; three brothers: Mr. Lee Cain, Gilmer, Texas; Mr. Howard Cain, Bastrop, Louisiana; Mr. Morris Cain, Oakland, California; two aunts, Mrs. Maggie Young, Bastrop, Louisiana; Mrs. Bettie Bryson, Chicago, Illinois; two uncles: Rev. I. Cain, New Iberia, Louisiana; Mr. David Cain, Chicago, Illinois; and a number of other relatives and friends."

WP 19

Source: "Obsequies Brother Mose Cain," (photo) dated September 3, 1970, in possession of Mrs. Isabelle Woods, 2016 Surrey Lane, Bossier City, Louisiana.

WHISPERING PINES CEMETERY, BASTROP, LA

THE GENIE First Quarter 2009

28

ID	NAME (Last, First, Middle)	PRE/SUFFIX	BIRTHDATE	DEATHDATE	INSCRIPTION/NOTES
8	BUNS, CORA		01 JAN 1896	03 AUG 1970	
116	BURKS, GEORGIA		24 DEC 1890	04 DEC 1970	
2	BURKS, JOE		15 OCT 1900	21 FEB 1984	HUSBAND
208	BURKS, PEARLINE	PASTOR.		11 APR 1986	OBITUARY, BASTROP (LA) ENTERPRISE DTD 15 APR 1986
117	BURKS, WILLIE		22 JULY 1888	05 MAR 1966	
126	BURLEY, CLIFTON	DEACON			FP: PARENTS-MR. & MRS. CLARA AND LEE BURLEY
86	BURRIS, HARRISON		1898	1975	PVT U S ARMY WORLD WAR II
20	CAIN, CARL REGINALD			03 FEB 1938	TRIO VAULT W/ MOSE & LUCINDA ARCHIE CAIN
21	CAIN, LUCINDA ARCHIE			10 JAN 1976	TRIO VAULT W/ CARL REGINALD & MOSE CAIN
19	CAIN, MOSE			30 AUG 1970	TRIO VAULT W/ CARL REGINALD & LUCINDA ARCHIE CAIN
97	CAMPBELL, ISSAC		20 APR 1903	14 NOV 1980	
207	CAMPBELL, ROBERT			11 JUL 1991	OBITUARY, BASTROP (LA) ENTERPRISE DTD 16 JUL 1991
121	CARGILE, EMMA RAY		26 JUN 1907	22 APR 1984	MOTHER
195	CARGILE, JIMMY			04 AUG 1987	OBITUARY, BASTROP (LA) ENTERPRISE DTD 07 AUG 1987
158	CARMICKER, GOLDER	MRS.		10 AUG 1981	OBITUARY, BASTROP (LA) ENTERPRISE DTD 14 AUG 1981
69	CARROLL, QUENON O'SHEA		27 JUL 1964	10 SEP 1980	
76	CARTER, LEONA JONES		30 APR 1904	23 SEP 1967	
106	CARTER, NICK	JR.	17 SEP 1935	23 JAN 1992	
154	CARTER, SAMMIE			27 FEB 1983	OBITUARY, BASTROP (LA) ENTERPRISE DTD 07 MAR 1983
148	COLEMAN, ALVY W.			?? JUL 1981	OBITUARY, BASTROP (LA) ENTERPRISE DTD 16 JUL 1981
151	COLEMAN, DALTON			?? OCT 1977	OBITUARY, BASTROP (LA) ENTERPRISE DTD 07 OCT 1977
55	COLEMAN, EARNEST CARLTON		11 JUL 1931	11 MAR 1972	
68	COLEMAN, MATTIE		25 JAN 1905	20 APR 1984	REAR OF HEADSTONE: "BELOVED MOTHER OF CLYDIA."
122	COOPER, ISAAC C.		15 JAN 1940	18 AUG 1974	HE LOVED AND WAS LOVED, SON.
35	COOPER, ROSIE LEE		1916	1965	BELOVED WIFE AND MOTHER
127	CROWDER, SHELBY	MR.		29 SEP 1972	FP: PARENTS-M/M DIANAH AND ROBERT CROWDER
111	DANIEL, COLONEL LEE		14 SEP 1921	09 APR 1982	DEVOTED HUSBAND AND FATHER
112	DANIEL, MARY JANE		01 MAY 1924	24 DEC 1993	FHM SHOW "JANUARY" NOT "MAY" AS MONTH OF BIRTH.
27	DAVENPORT, ESTELLA		1894	1973	
204	DAVENPORT, GEORGE			08 OCT 1989	OBITUARY, BASTROP (LA) ENTERPRISE DTD 13 OCT 1989



WHISPERING PINES CEMETERY, BASTROP, LA

THE GENIE First Quarter 2009

29

ID	NAME (Last, First, Middle)	PRE/SUFFIX	BIRTHDATE	DEATHDATE	INSCRIPTION/NOTES
62	DAVIS, ARAMINTA J.		18 MAY 1935	24 JUN 1982	
65	DAVIS, FRANKIE		1905	198?	VAULT'S NAMEPLATE ILLEGIBLE.
176	DAVIS, ROBERT			?? APR 1976	OBITUARY, BASTROP (LA) ENTERPRISE DTD 23 APR 1976
9	DAVIS, WILLIE ANN		31 JAN 1900	04 MAY 1968	DUO WITH ANNIE MAE HOLMES
42	DEJOHNETTE, JOSHUA J.			02 MAR 1997	AGE: STILLBIRTH
183	DEJOURNETTE, GABRIEL GENIUS	INFANT		20 SEP 1995	OBITUARY, BASTROP (LA) ENTERPRISE DTD 25 SEP 1995
123	DORSEY, JOHN		25 MAY 1892	09 FEB 1979	PVT U S ARMY WORLD WAR I
125	DORSEY, KISSIE		06 JUL 1898	25 DEC 1978	OUR BELOVED MOTHER
12	DORSEY, LURA		1900	1986	DUO WITH REV. S. D. DORSEY
205	DORSEY, NED			27 APR 1993	OBITUARY, BASTROP (LA) ENTERPRISE DTD 30 APR 1993
11	DORSEY, S. D.	REV.	BLANK	BLANK	DUO WITH LURA DORSEY
107	DORSEY, SAM		17 OCT 1887	22 JUL 1976	CPL U S ARMY WORLD WAR I
136	DORSEY, VIOLA	MRS.		18 DEC 1982	OBITUARY, BASTROP (LA) ENTERPRISE DTD 24 DEC 1982
198	DUNMORE, HENRIETTA WILLIAMS			21 NOV 1986	OBITUARY, BASTROP (LA) ENTERPRISE DTD 28 NOV 1986
84	EDMONDS, T. L.		12 SEP 1900	24 NOV 1976	FOOTSTONE:"DADDY." REAR OF HEADSTONE: "EDMONDS
120	EVANS, CAROLYN		01 DEC 1915	24 FEB 1966	MOTHER
124	EVANS, LOUISE DORSEY		11 MAY 1916	30 OCT 1983	MOTHER
181	FARMER, SIDNEY			?? FEB 1978	OBITUARY, BASTROP (LA) ENTERPRISE DTD 15 FEB 1978
1	FAULKNER, ?		09 JAN 1894	18 JAN 1969	
93	GARDNER, HATTIE		1907	1985	
51	GERMAN, IZEA	REV.	15 FEB 1930	01 MAY 1987	
29	GOLDSBY, GEORGE HENRY		09 MAR 1903	BLANK	DUO WITH MARY JANE GOLDSBY
30	GOLDSBY, MARY JANE		15 APR 1901	01 DEC 1969	DUO WITH GEORGE HENRY GOLDSBY
101	GRAY, WILLIE SUTTON		05 APR 1922	18 MAR 1981	
104	GREEN, CLARENCE		21 OCT 1925	18 JAN 1982	DUO WITH WEALTHA GREEN
188	GREEN, JASPER			29 SEP 1986	OBITUARY, BASTROP (LA) ENTERPRISE DTD 01 OCT 1986
105	GREEN, WEALTHA		BLANK	BLANK	DUO WITH CLARENCE GREEN
24	GRIFFIN, LUCILLE C.			08 JUL 1969	
80	HALL, ALICE B.		09 JAN 1872	06 OCT 1966	MOTHER
202	HAMILTON, EVELYN G.	MRS.		28 MAR 1989	OBITUARY, BASTROP (LA) ENTERPRISE DTD 03 APR 1989

## OBITUARY

"BROTHER FRANK JONES, JR., the son of the late Frank Jones, Sr., and Jullie B. Jones, was born May 3, 1888. He was called to rest on April 18, 1974.

"Brother Jones was converted in 1949 under the pastorage of Rev. I. C. McCormick and united with the Mount Sinai C.M.E. Church and remained there until his death. He served as a steward and class leader, loved his church, and was always willing to do whatever he could toward supporting it.

"He served in World War I.

"He retired from the Missouri Pacific Railroad after 49 years of service. He was a Mason, member of Composite Lodge No. 126, and the Christian Union.

"Brother Jones was married to Miss Percie McLone, June 26, 1942. They lived happily united until his demise.

"Left to cherish his memory are: a loving wife, Mrs. Johnson, Bastrop, La.; Mildred and Vickie Andrews of Oakland, Calif.; Nancy, Yvonne and Yvette Charles, Oakland, Calif.; five great, great grandchildren; three brothers: Mr. Peter Jones and Mr. Percy Jones of Collinston, La.; and Mr. Cornelius Jones of Oakland, Calif.; one sister, Mrs. Laura Collins, Bastrop, La., and a host of nieces, nephews, and other relatives and friends."

WP 128

Source: "Obsequies for Brother Frank Jones, Jr.," dated April 24, 1974, in possession of Mrs. Isabelle Woods, 2016 Surrey Lane, Bossier City, Louisiana.



FRANK JONES, JR.

WHISPERING PINES CEMETERY, BASTROP, LA

THE GENIE First Quarter 2009

31

ID	NAME (Last, First, Middle)	PRE/SUFFIX	BIRTHDATE	DEATHDATE	INSCRIPTION/NOTES
209	HAMLIN, HENRIETTA			?? NOV 1991	OBITUARY, BASTROP (LA) ENTERPRISE DTD 08 NOV 1991
143	HAMLIN, JOEAL		13 JUL 1933	?? APR 1980	OBITUARY, BASTROP (LA) ENTERPRISE DTD 28 APR 1980
128	HAMLIN, JOHN W.			01 NOV 1975	FP: PARENTS-M/M CHARLETTA AND MITCHELL HAMLIN
4	HARRIS, GEORGIA A.		1894	1976	
166	HENDERSON, HUDIE			28 APR 1982	OBITUARY, BASTROP (LA) ENTERPRISE DTD 04 MAY 1982
102	HEWITT, HARRELL L. "PAL"		29 AUG 1902	23 AUG 1972	
189	HIGGINS, C. W.			?? APR 1988	OBITUARY, BASTROP (LA) ENTERPRISE DTD 26 APR 1988
160	HILL, LETHA	MRS.		04 SEP 1982	OBITUARY, BASTROP (LA) ENTERPRISE DTD 09 SEP 1982
161	HOLLINS, ULYSSES			04 DEC 1977	OBITUARY, BASTROP (LA) ENTERPRISE DTD 08 DEC 1977
10	HOLMES, ANNIE MAE		28 FEB 1901	04 JUN 1977	DUO WITH WILLIE ANN DAVIS
144	HOLMES, ETHEL LEE	MRS.		29 SEP 1983	OBITUARY, BASTROP (LA) ENTERPRISE DTD 06 OCT 1983
165	HOLMES, GUY			20 SEP 1982	OBITUARY, BASTROP (LA) ENTERPRISE DTD 23 SEP 1982
83	HOLMES, PEARL		1892	1975	
177	HORTON, LILLA B.			22 NOV 1979	OBIT, BASTROP (LA) ENTERPRISE DTD 01 & 03 DEC 1979
3	HUNTER, BOBBIE JEAN		22 FEB 1942	12 SEP 1962	
137	HUNTER, ELLA			24 JAN 1979	OBITUARY, BASTROP (LA) ENTERPRISE DTD 30 JAN 1979
119	HUNTER, WILLIAM		04 JUL 1868	17 MAR 1963	
206	JACKSON, WILMER "BUDDY"			12 NOV 1987	OBITUARY, BASTROP (LA) ENTERPRISE DTD 17 NOV 1987
168	JAMES, PERRY LOUIS			?? JUN 1985	OBITUARY, BASTROP (LA) ENTERPRISE DTD 29 JUN 1985
118	JIMERSON, OPHALIA		03 MAY 1931	28 MAY 1991	FUNERAL HOME METAL MARKER
193	JOHNSON, CLOTIAL	MRS.		25 AUG 1992	OBITUARY, BASTROP (LA) ENTERPRISE DTD 02 SEP 1992
152	JOHNSON, EDD			24 SEP 1983	OBITUARY, BASTROP (LA) ENTERPRISE DTD 30 SEP 1983
163	JOHNSON, HERMAN	REV.		31 AUG 1981	OBITUARY, BASTROP (LA) ENTERPRISE DTD 03 SEP 1981
173	JOHNSON, KATIE	MRS.		14 SEP 1979	OBITUARY, BASTROP (LA) ENTERPRISE DTD 20 SEP 1979
26	JOHNSON, LEO WALTER		04 JAN 1907	BLANK	DUO WITH OLLIE LYONS JOHNSON
140	JOHNSON, LUCILLE	MRS.		20 JAN 1982	OBITUARY, BASTROP (LA) ENTERPRISE DTD 22 JAN 1982
145	JOHNSON, LULA MAE	MRS.		15 MAY 1985	OBIT, BASTROP (LA) ENTERPRISE DTD 18 & 22 MAY 1985
25	JOHNSON, OLLIE LYONS		17 NOV 1912	02 NOV 1984	DUO WITH LEE WALTER JOHNSON
56	JONES, BARBARA ANN		16 APR 1911	04 MAY 1962	
44	JONES, FRANK	JR.	03 MAY 1888	18 APR 1974	DADDY. DUO WITH PEARCIE JONES

### OBITUARY

"Services for LINZY MITCHELL, 88, of Bastrop will be held at 2 p.m. Friday at the St. Mary C.M.E. Temple with the Rev. G. J. Jackson officiating.

"Burial will follow in Whispering Pines Cemetery under the direction of Loche's Mortuary.

"Mr. Mitchell died December 14 at Morehouse General Hospital following a long illness.

"He is survived by one brother, J. C. Mitchell of Mer Rouge; two sisters: Elizabeth Mitchell of Oakland, Calif.; and Mrs. Lubertha Pilot of Mer Rouge; five stepsons: A. T. Sylvester and Spencer Sylvester, both of Bonita; and Charlie Mays, Lonnie Mays, and Leo Mays, all of Bastrop; two stepdaughters: Mrs. Minnie Mayo Reese and Mrs. Mary Lenoir, both of Bastrop; and 65 step-grandchildren."

WP 170

Source: Obituary of Linzy Mitchell in *Bastrop Enterprise*, Bastrop, Louisiana, dated December 16, 1982, Family History Club Library, Snyder Museum, Bastrop, Louisiana.



MRS. EDNA ROBINSON  
NORSWORTHY

### OBITUARY

"MRS. EDNA ROBINSON NORSWORTHY, the daughter of the late Willis and Corene Robinson, was born in Morehouse Parish, Bastrop, Louisiana, on January 3, 1912.

"She departed this life Thursday night, February 7, 1974, at 10:30 P.M. at Morehouse General Hospital.

"At an early age, she confessed Christ and joined Alexander Chapel in 1929 under the pastorate of Rev. A. J. Edward.

"She was united in marriage in 1946 to Mr. James Norsworthy. To this union, no children were born.

"Survivors include: two sisters, Mrs. Cayra Bennett; Mrs. Piccola Jones, both of Oakland, California; one brother, Mr. Luther Lee Robinson of San Francisco, California; four nieces, five nephews, and a host of relatives and friends."

WP 130

Source: "Funeral Services In Memory of Sister Edna Robinson Norsworthy," (photo) dated February 17, 1974. in possession of Mrs. Isabelle Woods, 2016 Surrey Lane, Bossier City, Louisiana.

WHISPERING PINES CEMETERY, BASTROP, LA

THE GENIE First Quarter 2009

33

ID	NAME (Last, First, Middle)	PRE/SUFFIX	BIRTHDATE	DEATHDATE	INSCRIPTION/NOTES
91	NEVELS, NORA LEE		19 APR 1936	01 JUL 1996	
59	NICHOLS, MARIE		1921	1984	OUR BELOVED WIFE AND MOTHER
130	NORSWORTHY, EDNA ROBINSON	MRS.	02 JAN 1912	07 FEB 1974	FP: PARENTS-M/M CORENE AND WILLIS ROBINSON
94	OWENS, OTIS		1922	1973	PFC U S ARMY WORLD WAR II
142	PHILLIPS, AVA NELL	MRS.		05 OCT 1984	OBITUARY, BASTROP (LA) ENTERPRISE DTD 12 OCT 1984
46	PHILLIPS, CLARA M.		27 MAR 1902	28 DEC 1985	DUO WITH CORDIE PHILLIPS
47	PHILLIPS, CORDIE		05 APR 1898	7 JUN 1986	DUO WITH CLARA M. PHILLIPS
131	POUNDS, NORMA			29 SEP 1974	FP: FATHER-BENNIE WALKER; SPOUSE-WILLIE POUNDS
90	QUALLS, CATHERINE ANN		02 SEP 1951	19 APR 1982	
167	RABUN, ADELL			17 OCT 1984	OBITUARY, BASTROP (LA) ENTERPRISE DTD 19 OCT 1984
171	RABUN, ELMER			19 FEB 1980	OBITUARY, BASTROP (LA) ENTERPRISE DTD 22 FEB 1980
98	RAYFORD, LYWOOD W.	SR.	08 JUL 1919	08 AUG 1980	SSGT WORLD WAR II
60	RIVERS, GEORGIA A.		26 DEC 1894	01 JUN 1968	DUO WITH JIM RIVERS
61	RIVERS, JIM		29 JUL 1893	09 FEB 1970	DUO WITH GEORGIA A. RIVERS
77	ROBINSON ELEANOR MOORE		01 MAY 1893	04 SEP 1978	
14	ROBINSON, ALMA		13 MAR 1887	07 MAY 1966	
45	ROBINSON, CLINTON	SR.	28 JUN 1924	08 AUG 1967	
54	ROBINSON, CORINNE		24 FEB 1877	08 JAN 1973	MOTHER.
138	ROBINSON, JOHN R.			10 DEC 1983	OBIT, BASTROP (LA) ENTERPRISE DTD 15 DEC 1983
99	ROBINSON, PLINA		14 MAY 1898	11 DEC 1981	OBIT, BASTROP (LA) ENTERPRISE DTD 15 DEC 1981
175	ROBINSON, VESTA			18 DEC 1985	OBIT, BASTROP (LA) ENTERPRISE DTD 26 DEC 1985
13	ROBINSON, VIRGIL		01 JUN 1881	03 FEB 1969	
52	ROGERS, ROBERTA		16 JUN 1896	26 SEP 1980	FUNERAL HOME METAL MARKER
114	SCOTT, MEMBRY L.		12 JUL 1911	05 SEP 1969	
16	SMITH, BESSIE		23 JAN 1900	27 DEC 1973	MAMA
32	SMITH, CAROLYN		15 JAN 1911	18 MAY 1990	MOMMY. DUO WITH RICHARD W. SMITH.
78	SMITH, CLARA MOORE		MISSING	MISSING	VAULT NAME PLATE MISSING
23	SMITH, JAMES		23 DEC 1899	07 MAY 1975	DUO VAULT W/ WILLIE ROBINSON SMITH
15	SMITH, MORGAN		15 FEB 1896	05 DEC 1963	DADDY
33	SMITH, RICHARD W.		31 AUG 1909	06 DEC 1994	DADDY. DUO WITH CAROLYN SMITH.



WHISPERING PINES CEMETERY, BASTROP, LA

THE GENIE First Quarter 2009

34

ID	NAME (Last, First, Middle)	PRE/SUFFIX	BIRTHDATE	DEATHDATE	INSCRIPTION/NOTES
103	SMITH, ROSETTA TAYLOR		09 JAN 1933	20 APR 1975	
22	SMITH, WILLIE ROBINSON		15 JAN 1902	19 APR 1962	DUO VAULT W/ JAMES SMITH
187	STEPHENS, MABEL	MRS.		22 MAR 1988	OBIT, BASTROP (LA) ENTERPRISE DTD 25 MAR 1988
194	STEPPS, ELI			01 OCT 1987	OBIT, BASTROP (LA) ENTERPRISE DTD 06 OCT 1987
48	STEVENS, GEORGE		13 AUG 1910	28 FEB 1968	LOUISIANA SSGT INFANTRY WORLD WAR II
58	SUTTON, GORDIE RIVERS		1919	1975	BELOVED MOTHER
6	SWINSON, ALFRED		25 AUG 1911	BLANK	
157	SWINSON, GEORGIA PEGGY			?? JUL 1984	OBIT, BASTROP (LA) ENTERPRISE DTD 02 & 03 AUG 1984
5	SWINSON, LILLER		24 OCT 1913	29 OCT 1989	OBIT, BASTROP (LA) ENTERPRISE DTD 02 NOV 1989
17	THOMAS, HELEN A.		12 DEC 1919	16 APR 1978	BELOVED DAUGHTER. SISTER.
174	THOMAS, HENRY			?? JUL 1977	OBIT, BASTROP (LA) ENTERPRISE DTD 16 JUL 1977
197	THOMAS, LARRY DONNELL			22 AUG 1987	OBIT, BASTROP (LA) ENTERPRISE DTD 25 & 27 AUG 1987
196	THORNTON, VICTORIA			27 DEC 1989	OBIT, BASTROP (LA) ENTERPRISE DTD 29 DEC 1989
89	TROTTER, MARY LEE		17 DEC 1947	17 NOV 1974	
115	TYLER, SHERMAN L.		11 APR 1924	04 NOV 1973	LOUISIANA TEC 5 U S ARMY WORLD WAR II
169	VANHOOK, ROBERT WALTER			09 SEP 1980	OBIT, BASTROP (LA) ENTERPRISE DTD 12 SEP 1980
190	WALKER, DOROTHY LEE	MRS.		?? AUG 1999	OBIT, BASTROP (LA) ENTERPRISE DTD 24 AUG 1999
201	WALKER, ESSIE MAE	MRS.		01 MAR 1989	OBIT, BASTROP (LA) ENTERPRISE DTD 07 MAR 1989
108	WARREN, MAZARA		1896	1977	PVT U S ARMY WORLD WAR I
63	WHITE, (G)RIFFIN ?			01 JAN 1987	AGE 84 YEARS
164	WHITE, ROSENA	MRS.		21 SEP 1980	OBIT, BASTROP (LA) ENTERPRISE DTD 25 SEP 1980
179	WILLIAMS, CHRISTELLA	MRS.		14 FEB 1978	OBIT, BASTROP (LA) ENTERPRISE DTD 23 FEB 1978
92	WILLIAMS, DOVIE		02 JUL 1891	20 SEP 1992	
82	WILLIAMS, ROGER		22 SEP 1928	09 APR 1983	CPL U S ARMY KOREA
100	WILLIAMS, SADIE LEE WILSON		01 JAN 1922	27 DEC 1983	
153	WILLS, HALLITE	MRS.		28 MAR 1985	OBIT, BASTROP (LA) ENTERPRISE DTD 02 APR 1985
67	WILSON, WILLIE B.		1898	1962	
74	WILSON, WILLIE T.		24 SEP 1923	25 JUN 1966	LOUISIANA TEC 5 CO ENGR GS REGT WORLD WAR II
53	WORLEY, ESTELL		17 JUN 1898	07 AUG 1976	IN MEMORY OF OUR LOVELY MOTHER
203	WRIGHT, MYRTLE MONTGOMERY			09 NOV 2007	OBIT, BASTROP (LA) ENTERPRISE DTD 15 NOV 2007

## Charles Leonhardt Family Bible

Contributed by Herman L. Weiland

The Leonhardt Family Bible was originally purchased by the Charles Frederick William and Esther (Lewis) Leonhardt family. It was passed to their eldest son Henry Lewis Leonhardt upon their deaths and then to his daughter, Anna Dora Leonhardt Trindle upon Henry's death. It is now in the possession of Gladys Elaine Trindle of Clearwater, Kansas. The Charles F. W. Leonhardt Family lived in the Manhattan, Kansas area, the Henry Leonhardt family migrated from Manhattan, Kansas to Kingfisher, Oklahoma in 1892. Copies of the family pages were provided to me in December 1976. Flyleaf page is inscribed " The Holy Bible containing the Old and New Testaments, Translated out of the Original Tongues and with the former translations diligently compared and revised, New York: American Bible Society, 1859.

### Page 1 left side

Charles Frederick William Leonhardt second son of John Frederick & Thecla Leonhardt was born in Grottkau in Prussia on the 18th of May 1827  
Esther L. Leonhardt eldest daughter of Griffith & Anna Lewis was born March 25, 1840  
Anna Thecla Leonhardt was born 22 of Jan 1862  
Henry Lewis Leonhardt was born on the 25 Dec 1863  
Bellamy Storrer Leonhardt was born 26 of February 1866  
Florence Stella Leonhardt was born 15 September 1868

### Page 1 right side

Mary Goodnow Leonhardt was born on the 24 of Dec. 1870  
Frances Denison Leonhardt was born on the 22 of February 1874  
Lillie Leonhardt was born on the 22 Jan 1877  
John Frederic Leonhardt was born 24 Feb 1882

### Page 2 left side

Joy Ruth Leonhardt was born on the 15 of August 1892  
Henry Paul Fredrich Leonhardt was born on the 31 of August 1894  
Jeannette Gladness Leonhardt was born on the 6th of Sept 1896  
Anna Dora Leonhardt born on the 22nd of Jan 1898  
Mary Lorena Leonhardt born April 8th 1901

### Page 2 right side

Anna Wood Lewis was born on Lake Champlain about 1808 or 9  
Griffith Lewis was born in Pa. in 1808.  
Our Grandparents

### Page 3 left side

Charles Frederic William Leonhardt & Esther L. Lewis  
were married on the 18th of April 1861  
Anna Thecla Leonhardt & Edward Lester Sharpe  
were married on the 18 of August 1883

Henry Lewis Leonhardt and Olive Martindale  
were married on the 27th of September 1884  
Henry Lewis Leonhardt and Olive Eudora Rudy were married June 4th 1891  
John Fletcher Swingle & Florence Stella Leonhardt were married Dec 6 1891

Page 3 right side

J. H. Persinger and Fannie D. Leonhardt were married  
June 11th 1894 at Manhatten, Ks.  
B. F. Rehfield and Mary G. Leonhardt were married at Emporia, Ks Dec 8, 1898  
J. F. Leonhardt and Mildred Hurlburt were married Mar 31, 1902, at Sharon Springs, Ks  
H. L. Leonhardt and Jennie Johnston were married Jan 1, 1909 at Tyler, Texas  
H. L. Leonhardt and Emma Hobson married Sept 20, 1921 Kingfisher, Okla  
Anna T. Leonhardt Sharpe and Frank Carpenter married Jan 22, 1912 Stafford, Okla

Page 4 left side

Lillie Leonhardt died on the 1st of February 1877  
Charles Frederic William Leonhardt departed this life September 7, 1884  
Esther Leonhardt daughter of Henry Leonhardt died on the 14 of April 1886  
Olive Leonhardt wife of Henry Leonhardt died on the 24 of May 1886  
Frank Leonhardt died 29th June 1924  
Our Mother Esther Leonhardt died on the 22 of April 1892  
Stella L. Swingle died Feb. 14 - 1907  
John Frederic Leonhardt died May 8, 1964  
Frances Leonhardt Persinger died November 30, 1968  
Burial in Memorial Park, Oklahoma City

Page 4 right side

Olive Eudora loving wife of Henry L. Leonhardt departed this life Dec 22nd 1906  
Jennie, wife of Henry Leonhardt, died March 16, 1918  
Joy Ruth Baker, loving daughter of Mr. and Mrs. Henry Leonhardt  
departed this life April 8th 1938  
B. F. Rehfeld died July 10 - 1931  
J. H. Persinger died June 6 - 1938  
Frank Carpenter died March 17 - 1939  
Anna T. Carpenter died Sept 16 - 1941  
Emma Leonhardt wife of Henry Leonhardt died July 11 - 1944  
Henry Lewis Leonhardt died on Aug 17, 1952 at the home of his daughter  
Mrs. Anna Trindle  
Mary Leonhardt Rehfeld died April 5, 1961

\*\*\*\*\*

# QUERIES

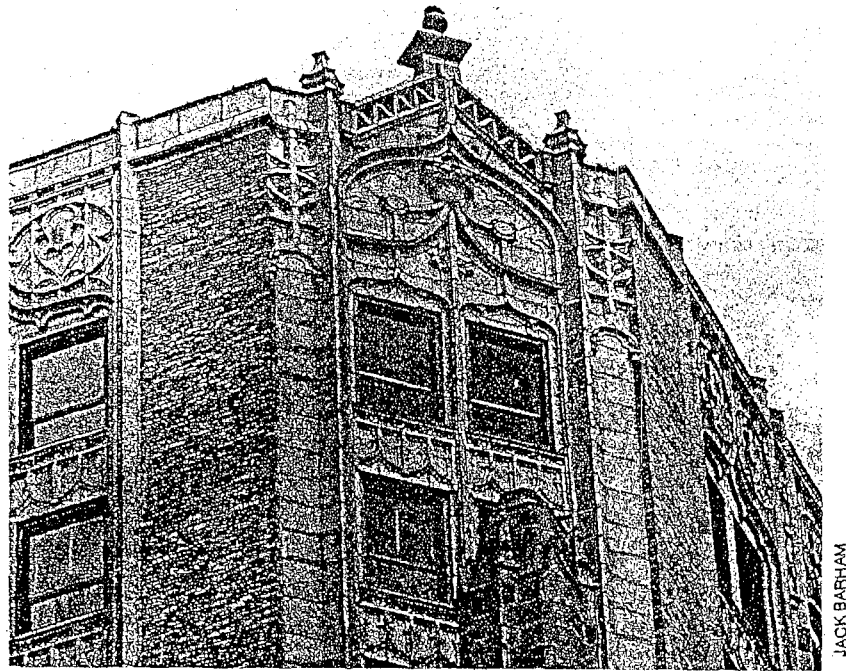
*Notice to members.* Queries may request explicit information on individuals who should be identified by place name (county/parish or town/state) and by date (year only). We will attempt to print the queries as received without editing, if possible, so please keep them as concise as possible. Lengthy queries will be edited due to space requirements. If you wish to exchange information on a specific surname or group of people with similar names, simply begin your query with "Exchange" and follow with the family names of interest.

Queries are only accepted for active members at the time the query is received, some exceptions. Queries are printed in the order in which they are received and on a space available basis. Multiple queries from the same individual may appear in separate issues. Please PRINT or TYPE your queries to make sure that the information published is precise and names and addresses are correct so that you can receive the answers you wish without delay.

## QUERY NOTE

It has come to our attention that many people requesting direct responses from individuals, publications, and associations frequently do not supply return envelopes or postage. It has been a custom for as long as we can remember to supply a self-addressed stamped envelope (SASE) along with ANY request for information. After all, we are requesting that someone go out of their way to provide us with a piece of information, of which we may be in great need. Many individuals and organizations will not even respond unless there is a SASE enclosed. Their usual action is to put your request on the "back burner" until some later time. We hope none of our readers are guilty of this oversight. We are all too aware of the increases in postage rates, but we feel that the inclusion of the proper return material is a small price to pay for what may be the piece of information you have been in search of for years.

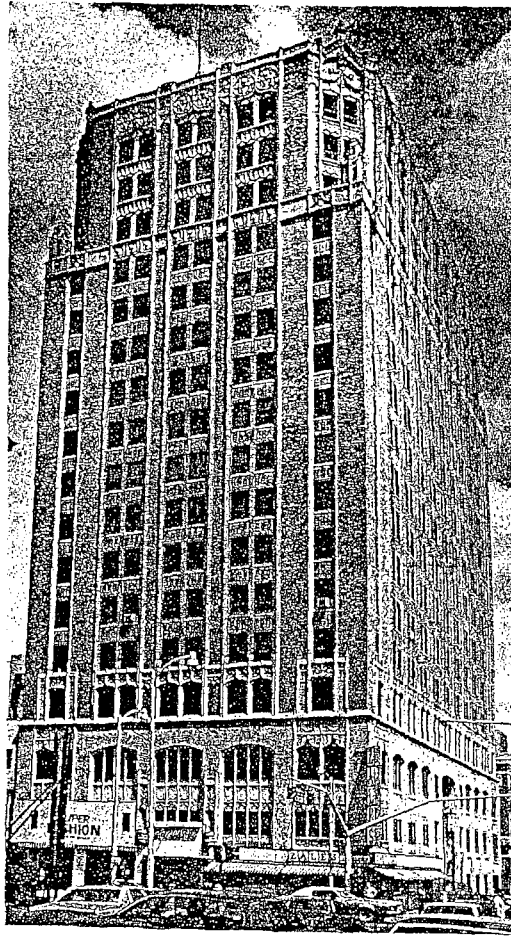
“®reprinted from *Historic Shreveport* with permission”



**Slattery Building**  
509 Marshall. 1924.

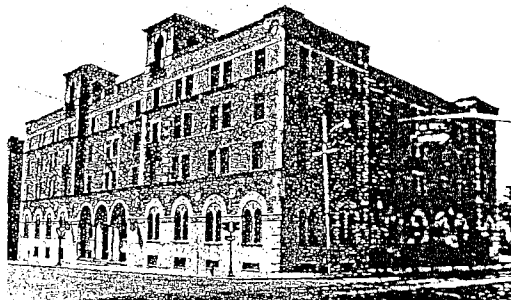
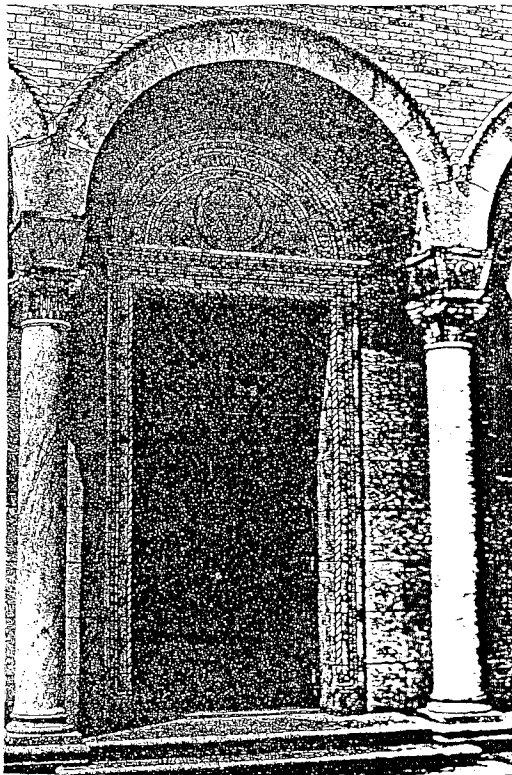
Shreveport embraced the optimism of the 1920s and inaugurated a building boom that changed its skyline. The Slattery Building was the marvel of the age. It cost \$1.5 million and stood taller than any other privately owned structure in the state. The Mann and Stern firm designed the building in the Gothic Revival style. Gothic details were added to the first four floors and then repeated on the top four floors.

John Bernard Slattery was more than 70 years old when construction began on the building that bears his name. An 1872 graduate of the University of Wisconsin, he moved south and founded a prominent Shreveport family. The family home was at 2401 Fairfield Avenue.



*Historic Shreveport*



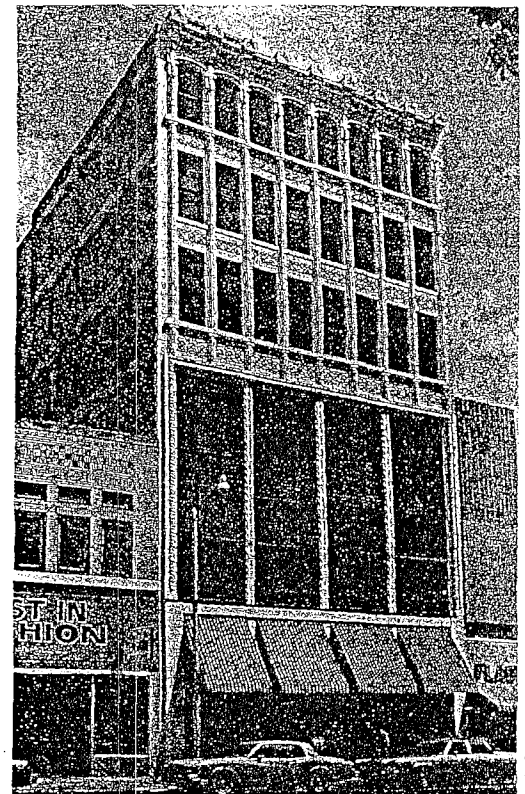


16

**YMCA Building**  
400 McNeil. 1925.

A subscription drive raised money in 1923 to construct a new downtown YMCA. Supporters fondly referred to the proposed structure as a “character factory” — an appropriate metaphor for that business minded-decade.

The firm of Peyton and King designed the building. In keeping with the Mediterranean Revival style of architecture, there is an interior courtyard.



17

**Hutchinson Building**  
504 Texas Street. 1910.

A creamy white, terra cotta facade gives distinction to the six-story office building, which is modern in several respects. Its steel and masonry frame relieves the walls from bearing the structure’s weight and allows placement of the large windows.

The Hutchinson brothers ordered the building constructed under a rigid time rule. When the contractor failed to meet the deadline, he was required to add two more floors — at his cost. Where before a livery stable had been, Shreveport had a new tall building and further evidence of the downtown’s prosperity.

The building has been extensively remodeled, and its owners have taken care to preserve the exterior’s integrity.

## ***Historic Shreveport***



# BEGINNER'S GENEALOGY CLASS

Sponsored by Ark-La-Tex Genealogical Association

Saturday April 4, 2009

9:30am - 4:30pm

At

**Shreve Memorial Library - Broadmoor Branch**

**1212 Captain Shreve Drive**

**Shreveport, La 71105**

Email: [smlgenealogy@yahoo.com](mailto:smlgenealogy@yahoo.com)

(one block off East Kings Hwy/East Preston St)

## Topics include:

- Critical Forms and Getting Organized
- Introduction to U. S. Censuses
- Introduction to Genealogy Software Programs
- Conducting Skilled Interviews
- Introduction to Internet Resources for Genealogical Research

Note: Pre-registration is recommended, because of limited seating. There is no charge. Optional handout/workbook will be available for small donation to cover cost of printing. Bring your lunch or plan to eat at a nearby restaurant.

-----Cut here-----

Please give or send the information below to the Genealogy Department, Broadmoor Branch Library (address and email address as above) or call (318) 219-3468 for more information.

Name: \_\_\_\_\_ Phone: \_\_\_\_\_

Address: \_\_\_\_\_ Apt.: \_\_\_\_\_

City: \_\_\_\_\_ State: \_\_\_\_\_ Zip Code \_\_\_\_\_

Email: \_\_\_\_\_

# INTERMEDIATE GENEALOGY CLASS



Sponsored by Ark-La-Tex Genealogical Association

Saturday May 2, 2009

9:30am – 5:00pm

**Shreve Memorial Library - Broadmoor Branch**

**1212 Captain Shreve Drive**

**Shreveport, La 71105**

Email: [smlgenealogy@yahoo.com](mailto:smlgenealogy@yahoo.com)

(one block off East Kings Hwy/East Preston St)

Instructor: Phil Adderley,  
311 Research

Topics:

- Interpreting Subtleties in Land and Court Records
- Integrating Real Estate, Personal Property, and Poll Tax Records with Deeds/Conveyances
- Developing Research Theories – Multiple Identity Resolution Problem using Marriage, Land, Tax, Census, Civil Suit, Forensic Handwriting Identification
- 19<sup>th</sup> Century Louisiana Civil Code – Understanding Successions, Tutorships, and Associated Records

Note: This class is for intermediate level researchers. Pre-registration is required. There is no charge other than the nominal cost of optional handout/workbook. Bring your lunch or plan to eat at a nearby restaurant.

-----Cut here-----

Please give or send the information below to the Genealogy Department, Broadmoor Branch Library (address and email address as above) or call (318) 219-3468 for more information.

Name: \_\_\_\_\_ Phone: \_\_\_\_\_

Address: \_\_\_\_\_ Apt. \_\_\_\_\_

City: \_\_\_\_\_ State: \_\_\_\_\_ Zip Code \_\_\_\_\_

Email: \_\_\_\_\_

Please circle below the number corresponding to the prerequisite status that applies to you:

1. Staff member of Genealogy Department of Shreve Memorial Library;
2. Active member of (name) \_\_\_\_\_ Genealogy Society/Assn; or
3. Meets 'Intermediate Level' guidelines prepared specifically for this class, listed on reverse side.

For library use: Date/Time Received \_\_\_\_\_

(Over)

## Who is an "Intermediate" Level Researcher for the purposes of this class?

Use the following guidelines to determine whether you are in a position to take this class. The instructor will presume that you are familiar with the most common record sources and methodology used in late 19<sup>th</sup> and 20<sup>th</sup> Century genealogical research:<sup>1</sup>

- a. The registrant has used at least one basic how-to guide, such as Carmack's *The Genealogy Sourcebook*, Morgan's *How to Do Everything with Your Genealogy*, Porter and Crow's *Online Roots*, or Renick's *Genealogy 101*.
- b. The registrant can properly complete a pedigree, family group sheet, & research log; knows how to maintain and organize their accumulated genealogical information; knows a numbering system; and knows how to link source citations (reference notes) to their entries.
- c. The registrant has researched in at least one line, four generations, including themselves, or back to 1880, using all of the following record groups: federal censuses, vitals, newspapers, cemeteries, probate, and land records.
- d. The registrant has conducted 20 or more hours research in a genealogical or historical library, or historical archives.
- e. The registrant has conducted 20 or more hours research either in The Family History Library (FHL) or a Family History Center (FHC); or via the use of FHL/FHC film, fiche, and/or Inter-library-loaned materials.
- f. The registrant has conducted 20 or more hours research either in a courthouse or via the use of filmed courthouse records.
- g. The registrant has properly abstracted and cited an original will or deed, extracted a census entry accurately, and understands the difference between an original and derivative source.

In lieu of the above, staff members of the Broadmoor Branch Library Genealogy Department and active members of any genealogical society/association may register. Registration is on a first come basis.

### **Before-Class Preparation:**

The instructor will repeatedly draw from Elizabeth Shown Mills, *Evidence Explained, Citing History Sources from Artifacts to Cyberspace* (Baltimore: Genealogical Publishing Company, Inc., 2007). Registrants are encouraged to study Chapter 1, Fundamental of Evidence Analysis, pages 15-38. Those who cannot gain access to this work are encouraged to consult the evidence analysis material in Mills' earlier work *Evidence! Citation and Analysis for the Family Historian* (Baltimore: Genealogical Publishing Company, 1997).

Several of the materials used will include handwritten 19<sup>th</sup> century documents. While not required, those having or needing magnifying lenses are encouraged to bring their own. [The instructor does not guarantee that typed transcriptions will be available when the handouts are finalized].

---

<sup>1</sup> The guidelines used by the Ark-La-Tex Genealogical Association for this Intermediate Class were adapted specifically for this class, derived from Sandra Luebking, "What's an "Intermediate"? Or should I take Course 1 or Course 2?" Institute for Genealogy and Historical Research, Samford University Library ([http://www.samford.edu/schools/ighr/IGHR\\_Course02.html](http://www.samford.edu/schools/ighr/IGHR_Course02.html) : January, 2009). IGHR Courses 1 and 2 are essentially beginner and intermediate levels respectively.

# **Do You Have French Canadian Ancestors?**

## **Part I**

**Submitted by Harry Lazarus**

I have. My earliest ancestors came to Quebec, Canada from France in the middle 1600's. I found then in "Dictionnaire Genealogique, Familles Canadiennes" by L'Abbe Cyprien Tanguay, "Dictionnaire Genealogique des familles du Quebec" by Rene Jette, and "Dictionnaire National des Canadiens-Francais" by Institut Genealogique Drouoin and "Our French-Canadian Ancestors" by Thomas J. La Forest.

All except the last one gives only the genealogy. La Forest gives biographies. There are thirty (30) volumes' donated to Shreve Memorial Library with funding from Magna Charta Shreveport Chapter on 7 February 2002. They are located in the Genealogy section of the Broadmoor Branch of Shreve Memorial Library. I have found eight (8) of my French-Canadian ancestors.

### ***These are my 11<sup>th</sup> great-grandfathers:***

- Julian Fortin was born in 1621 near the Old Province of Perche in France and arrived in Quebec in 1650; Volume I.
- Florent LeClerc was born 1619 near Richelieu in Anjou, France. He settled in Trois-Rivieres, Quebec Canada before 1675; Volume IV.
- Gaspar Boucher was born 1635 in Perche, France and arrived with his family in Quebec in that year; Volume VI.
- Pierre Hudon dit Beaulieu was born at Trois Rivieres, Quebec in 1649 (*I have a picture of one of his direct descents by the same name who lives in GA.*); Volume VIII.

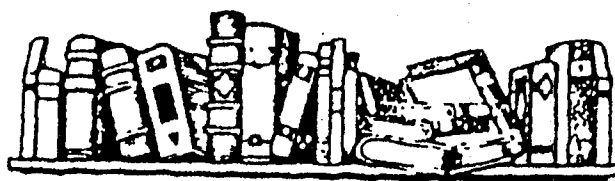


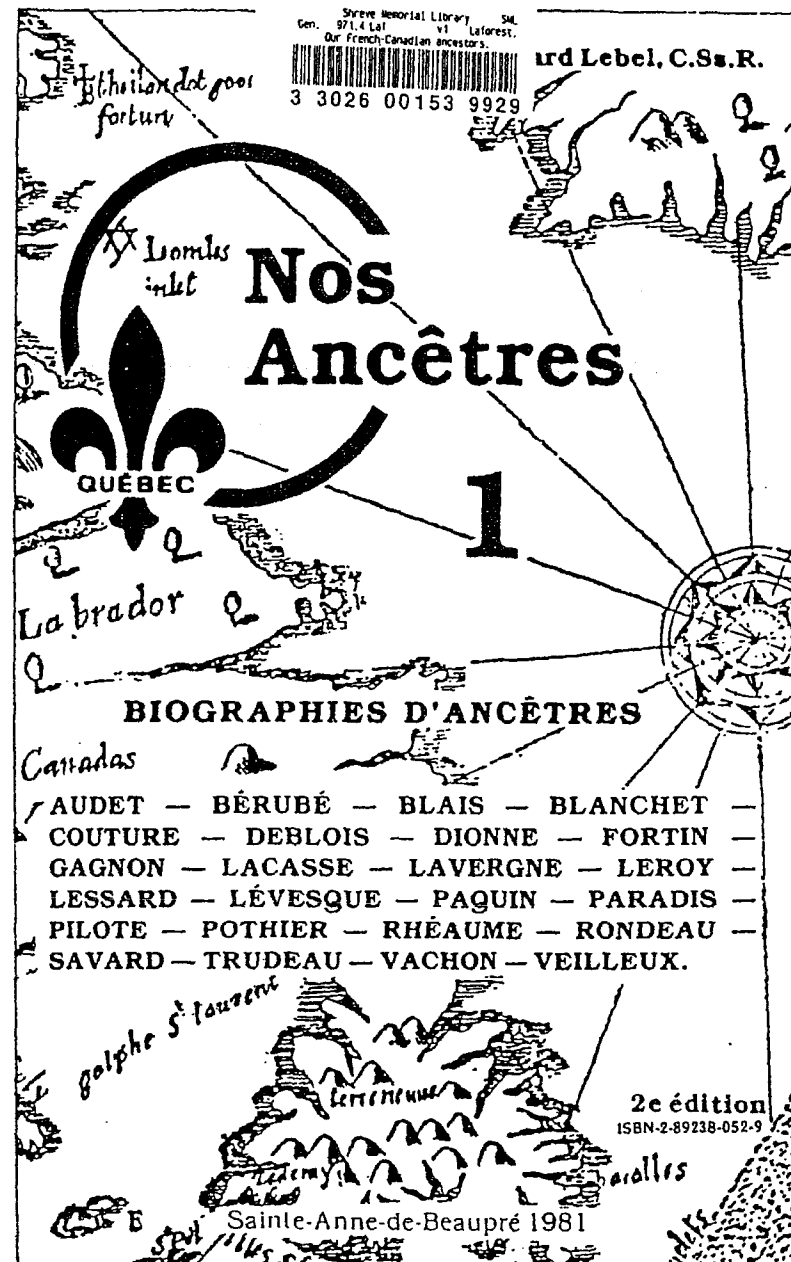
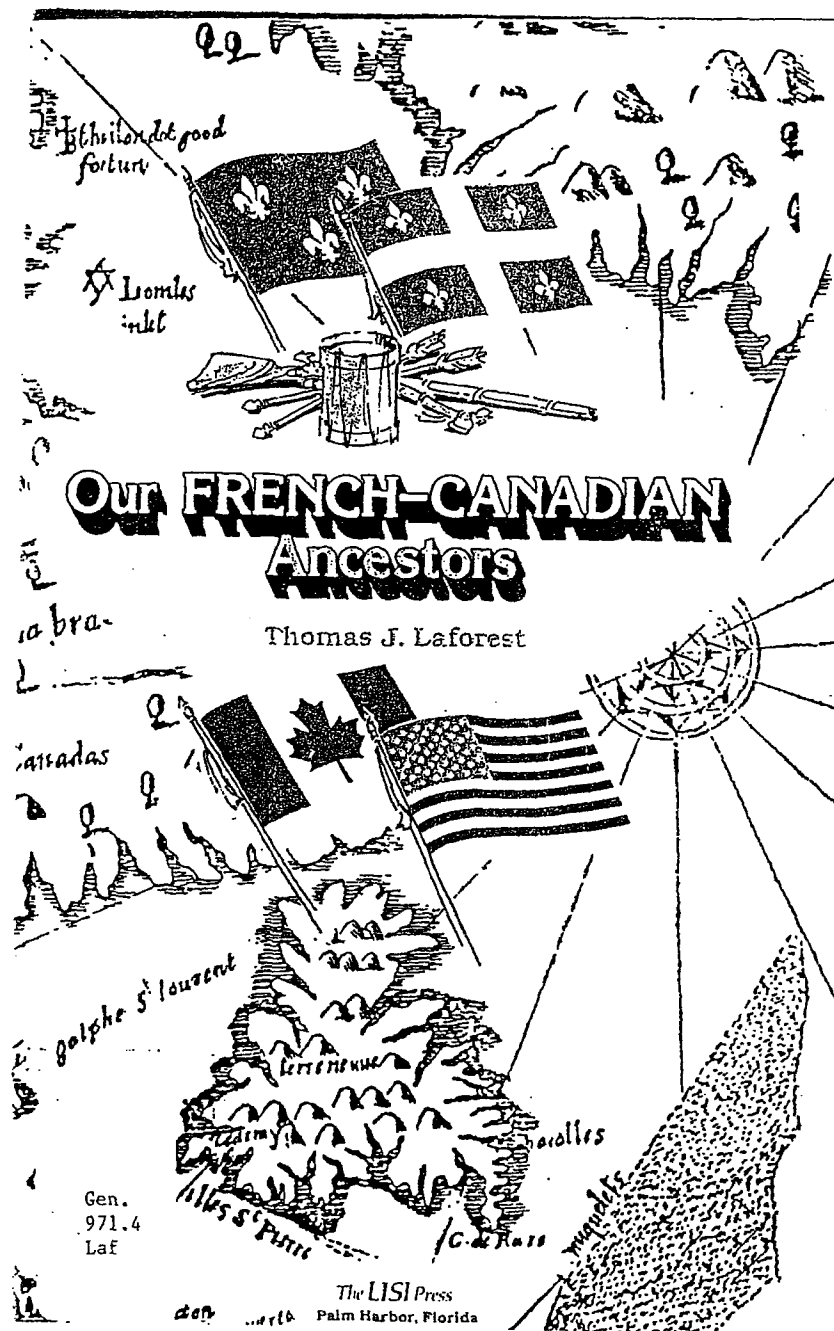
- Urbain Baudry dit Lamarche was born in 1615 at Luche, France and immigrated to Canada about 1645; Volume XIII.
- Francois Brunet dit Bourbonnais was born in 1644 in Barlieyuin the canton Vailly-sur-Sauldre, France. We don't know if he came as a soldier or an immigrant; Volume XV.
- Jacques Archambault was born about 1604 in Compiere-sur-Mer, LaRoche, France. Arrived in Quebec with his wife and six (6) of his seven children in 1646; Volume XVIV. (Note: *David Hardin, a young man who was the head of the Genealogy Department at Shreve Memorial Library for a short time, shared this ancestor with me.*)
- Sebastien Langelier baptized about 1617 Fresquiene, canton of Pavilly. Came to Quebec before 1654; Volume XXIX.

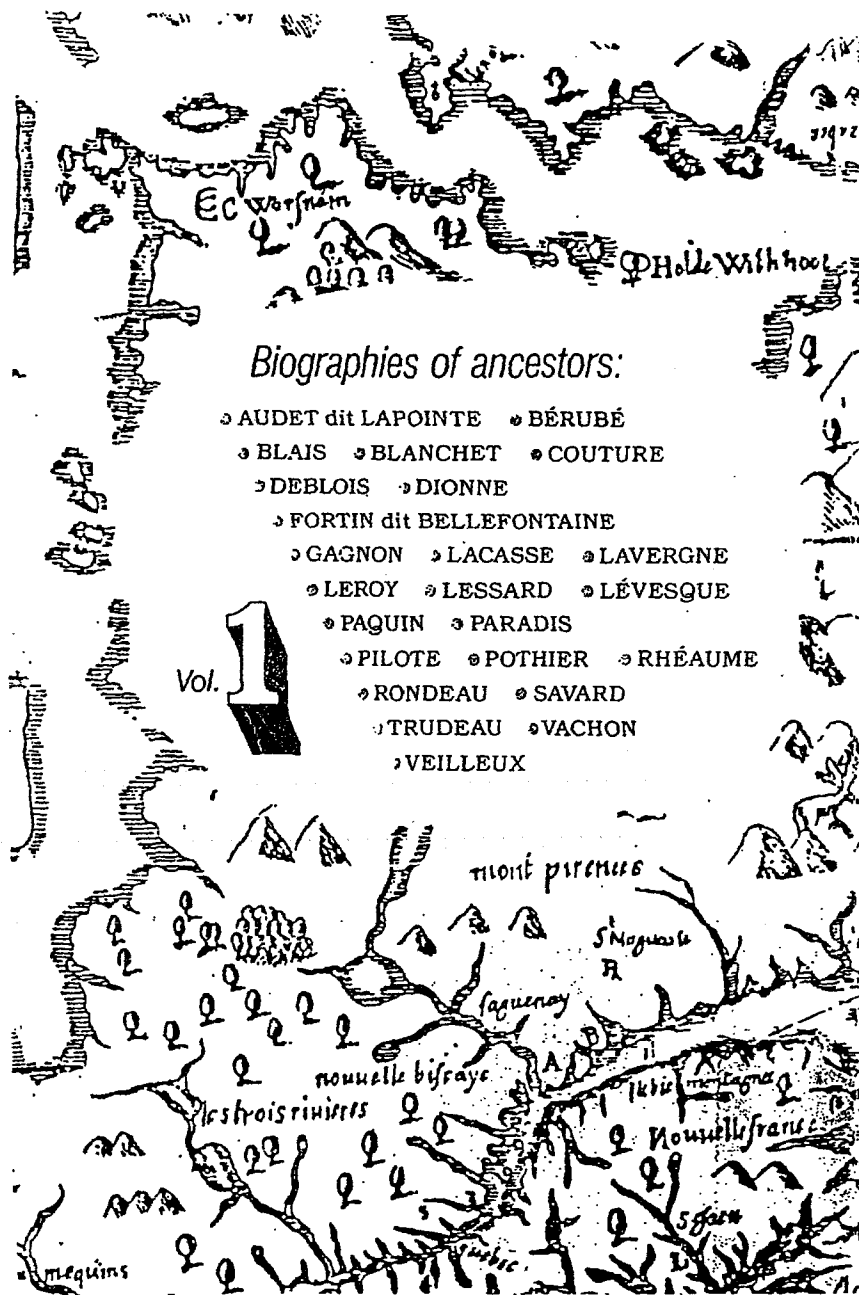
*Editor's Note: The following pages are inserted with permission from **Quintin Publications'** president, Phil Quintin. Quintin Publications is recognized as the vendor and distributor of the complete series of "**Our French-Canadian Ancestors**." Part I is from Volume I of Nos Ancetres; Chapter 10; Julien Fortin.*

*Quintin Publications was founded in 1978 by Robert J. Quintin as an outgrowth of his interest in French-Canadian genealogy. They are currently the world's largest producer of digital versions of the most important and rare genealogical and historical books.*

*Start your research with Quintin Publications:  
<http://www.quintinpublications.com/>*







## A Review

From the "MEMOIRES de la Societe Genealogique Canadienne-Francaise," No. 143, Volume XXXI No. 1 Jan.-Fev.-Mars 1980. Page 69.

By Father Gerard Lebel C.Ss.R., *Nos Ancetres*. Ancestral biographies of the oldest of the French-Canadian families. Edition: Saint-Anne-de-Beaupre, 1980. Twenty-four biographies, 145 pages in all.

"The author is an expert on original documentation. He has searched the archives and knows the best sources. Many of the ancestral biographies that he presents are little known, others more so. However, in this sort of research, facts often suffer in the telling and become swallowed up by legend and folklore. Not so with Father Lebel. He sticks to the historical truth when combing his sources. Even the professional genealogists will have a great deal to learn from this welcome little book."

R.P. Julien Deziel, President  
Societe Genealogique Canadienne-Francaise



## Chapter 10

### Julien Fortin dit Bellefontaine

*It was at Saint Cosme-de-Vair on 9 February 1621, on the border of the old Province of Perche in France, where Our Ancestor Julien Fortin was baptized. He had a sister, Helene, and three brothers; he was the half brother of eight other children by Julienne Guillemain. His father, also a Julien and the son of Simon, was a butcher by trade. Young Julien lost his mother on 24 November 1628, when he was but seven years old. She was the daughter of Gervais Lavye and had married Julien senior on 26 November 1618 in the Parish of Notre Dame.*

### ARRIVAL IN CANADA

Doctor Robert Giffard, proprietor of the Seigneury of Beauport in New France, returned to France for a visit in 1634 and stayed at the celebrated Inn of the Cheval Blanc. It so happened that this hostelry was owned by Gervais Lavye, the maternal grandfather of Julien. Our future colonist was about 13 years old and fascinated with the stories told by Seigneur Giffard about life in Canada. Robert went back to Canada, but returned to France in 1650 on a recruiting mission. As a result, many of the local citizens of Perche decided to emigrate in company with Giffard, Julien included.

The 29-year-old Julien took himself to the port of Dieppe in Normandy, embarked for New France and spent three long months at sea because of head winds. The ship finally arrived at Quebec by the end of the summer of 1650. Disembarking with Julien Fortin were passengers Simon Rocheron and his sister Marie, a carpenter named Rouillard, the tailor Claude Bouchard, Simon Lereau, the ancestor of all the L'Hereux, and many other emigrants. (1)

## AN ACTIVE AND PROSPEROUS COLONIST

Arriving in the country after two months of suffering at sea, Julien Fortin dit Bellefontaine, lost no time getting started. Perhaps he had some money set aside, or some economic resources on which he could draw, because he bought a prime piece of waterfront property just in front of Sainte Anne-de-Beaupre on 26 December 1650; a fortuitous Christmas present to himself. He sold it to Robert Caron on 27 March 1654 for the sum of 500 livres.

On 23 August 1657 Julien became part owner of both the Seigneurie of Beaupre and of the Ile d'Orleans. The seller was Sieur Charles de Lauzon-Charny, Commandant-General of New France, the son of Jean and Louise Giffard. Our ancestor was obviously well connected. Julien paid 700 livres in beaver pelts for this fiefdom. On 11 February 1662, he sold it all to Mgr de Laval for 750 livres, but not without reward. (2)

On 4 June 1659 our prosperous Julien was given a concession at Cape Tourmente of 6 arpents of river frontage by a league and a half in depth. (3) Today this territory goes by the name of "The Fortin Coast". The census of 1666, 1667 and 1681 tell us that he lived there. In 1667 he had two domestics in his employ, Leonard and Francois Jarivet; he had 8 arpents of cleared land and 7 beasts in the stable and he would live in Saint Joachim until his death.

Julien also owned lot number 149, 12 arpents on the Saint Lawrence River by 42 arpents in depth. He purchased this land, located in the territory known as LaPetite Riviere de Saint Francois in Charlevoix county, for the sum of 280 livres from Pierre Laforest dit Labranche and his wife Charlotte Anne Godin, daughter of Elie and of Esther Ramage. (4)

## AN INVOLVED CITIZEN

On 2 February 1660, the Feastday of the Purification of Mary, Julien was confirmed at Chateau-Richer by Mgr Francois de Laval, Bishop of Quebec.

On 6 October of the same year, before Father Franco Le Mercier and Churchwarden Joseph Mace-Gravel, Julien made a gift to the Church of Notre-Dame de la Visitation. Chateau Richer, of 50 livres and a little wooden house.

The following year, 6 October 1661, he testified in deposition before the court on the subject of the Iroquo ravages: the sacking of the farms of Jean Picard, the widow Caron and Claude Bouchard, as well as the massacre of people, among whom was Louis Guimond. (5)

Two gifts were recorded in the register of receipts and expenditures of the church of Saint Anne: 27 January 1666 "given by bellefontaine 20 S," that is to say one livre; and "received from bellefontaine two minots of wheat," early in 1676. (6)

As recorded by Notary Romain Becquet on 18 August 1680, Julien "gave to Pierre Voyer, Guillaume Bouche and Felix Auber, Wardens of Chateau-Richer, for the Churches of Chateau-Richer and Sainte-Anne, a house situated at Chateau-Richer nearby the church, with a bakehouse at one end, bordered on one side by Thomas (name illegible), for the use of the two churches equally . . . the said donation made to the said churches because of their great devotion that he has for them." (7)

Thus we see Our Ancestor Fortin as a man of generous faith and also of sincere attachment to Mary and Saint Anne.

## THE FATHER OF A LARGE FAMILY

On 11 November 1652 Julien married the 17 year old Genevieve Gamache, daughter of Nicholas Gamache dit Lamarre and of Jacqueline Cadot. They were from Sainte Illiers, Diocese of Chartres in the Beauce region of France. Present at the ceremony were the father of Genevieve, Nicholas Gamache, the Sieur Le Tardif, Louis Gagne and Claude Auber. Father Raqueneau, S.J. blessed the marriage.

which took place in the home of Louis Gagne, at Cape Tourmente, which was at that time within the limits of Sainte Anne parish. The contract of marriage had been made previously at the house of Toussaint on the Cape, on 22 August 1652, by Notary Claude Auber. (8)

On 21 October 1654 there was great joy around the Fortin hearth for a daughter, Barbe, was born. On the 10th of the following month Father Paul Ragueneau went to the home of the said Bellefontaine on the Beaupre coast, to carry out the baptismal ceremony. The Grand Senechal of the country, Jean de Lauzon, acted as godfather. Barbe Aymont, wife of Sieur Le Tardif, as godmother, gave the gift of her first name to the baby. Then, another baby came along just about every 23 months, until 15 June 1677, when the last was born. They were Charles, Eustache (later to be a major of militia at Cape Saint Ignace), Jacques, Genevieve, Joseph, Marie-Ann, Julien, Pierre, Louis, Jean and Marguerite the youngest. A total of 8 boys and 4 girls, all baptized at Sainte Anne-de-Beaupre.

If great joy accompanies a large family so must there be a few crosses to bear. In 1687 Julien and Louise, ages 20 and 16 respectively, died in the flower of their youth. Some months later, on 10 August the same year, Pierre Gagnon, the husband of Barbe the eldest, was buried at Sainte Anne. All three were victims of epidemics of scarlet fever and the measles, which swept the region that year; then the small pox epidemic of 1702-03 took Marie-Anne, Genevieve and Joseph. (9)

### A MIRACLE OF SAINTE ANNE

In the year 1667, Father Thomas Morel set himself to the task of recording the miracles accomplished through the intercession of Sainte Anne of the Little Cape. The following paragraph tells of a prodigious event that happened to the Fortin family in 1666.

"Barbe fortin, daughter of Julien fortin belle fontaine habitant of Beaupre age of twelve years or about attack by

a pleurisy and in danger of death, having been recommended to Sainte Anne by her father and mother who made a vow and novena to her straight away received a perfect cure at the end of the novena." (10)

### FAREWELL CHRISTIAN FRIENDS

We do not know the exact date of death of Our Ancestor Fortin. We do know that on 18 June 1689, Julien was godfather to his granddaughter Marie, the daughter of Genvieve and of Noel Gagnon. Then nothing more! At the second marriage of Barbe to Pierre Lessard on 16 April 1690, Julien did not sign as a witness, so it is reasonable to assume that he died between those two dates, some say in September 1687. The colony had lost a great man. (11)

Genevieve Gamache continued to live from the inheritance of her late husband, but she would end her days in the home of her son Charles at l'Islet, not far from the fief of her brother Nicholas Gamache dit Lamarre. She was buried at Notre Dame de BonSecours, at l'Islet, 5 November 1709. (12)

On 17 August 1777, a third generation Fortin was ordained a priest. Jean-Marie was the Cure of Sault-au-Riccollet, of Lotbiniere, of Sainte Foy and of Saint Jean, Ile d'Orleans. He died at the Hospital General of Quebec on 9 December 1829 and was buried at Saint Jean. (13)

In addition to the surname Bellefontaine, some descendants of Julien Fortin also took the names of Hermel and Paris. (14)



## Accessing Heritage Quest From your Home Computer.

You can access Heritage Quest Online from your home by using the following steps below. You will need to use your Shreve Memorial Library card's barcode to access the service from your home computer.

If you wish, you may use Heritage Quest Online from the library. You will find an icon for Heritage Quest Online on the desktop of all the library's public Internet computers. A barcode is not necessary when access is through a library computer.

1. Type [www.shreve-lib.org](http://www.shreve-lib.org) in the address line of your *Internet connection* and press "Enter" or click "Go".
2. Select "**SHREVE MEMORIAL LIBRARY**" from the Search Results, click on it.
3. When the "SHREVE MEMORIAL LIBRARY" page appears, scroll down to and click on "**Patron Services**".
4. From the "Patron Services" page, scroll down to the "Library Departments" section and click on "**Genealogy**".
5. When the "Genealogy Library" page appears, scroll down to "Useful Genealogy links".
6. Select and click on the "**Heritage Quest Online**" (outside library) link.
7. When the Heritage Quest Online page appears; a menu will ask you for your 14-digit Shreve Memorial Library CARD number (**Barcode #** on back of library card).
8. Enter the **ENTIRE** number (which will start with 2306-----), then click **CONNECT**.
9. The Heritage Quest home page will appear with five (5) **options**, select and click on Search Census option.
10. The Search Census Page will appear...Enter: the person's Surname; the person's Given name; the Census Year you want to search; and the State you want to search. Click **Search**.



## SURNAME INDEX

[A surname may appear more than once on a page.]

Adams 27	Carroll 28	Goodwin 14
Adderley 1, 16, 41	Carter 9, 28	Goveereau 21
Allen 8	Charles 30	Gravel 48
Andrews 30	Charny 48	Gray 29
Archambault 44	Christian 1	Green 29
Archie 27, 30	Coleman 28	Green 6, 28
Atkins 26	Collins 30	Griffin 1, 3, 19, 27, 29
Auber 48, 49	Cooper 28	Guillemin 47
Aymont 49	Covington 13, 14, 15	Guimond 48
Baird 13	Crawford 13	Hall 29
Baker 26, 36	Crowder 28	Hamilton 29
Barnett 13, 14	Daniel 28	Hamlin 31
Barnidge 6	Davenport 28	Hardin 44
Bartholomew 8	Davis, 29	Harris 31
Beaulieu 43	DeJournette 29	Henderson 31
Beck 20	Dennis 20	Hermel 49
Bellefontaine 47, 48, 49	Deziel 46	Hewitt 31
Bennett 32	Dirks 8	Higgins 31
Bernard 1, 2, 7, 22, 23	Dorsey 29	Hill 8, 31
Blackmon 26	Drucker 8	Hobson 36
Blueford 26	Dunmore 29	Hollins 31
Boggs 12, 13	Duplessie 7, 10	Holmes 31
Bonnett 26	Edmonds 29	Horan 7, 8
Bosworth 26	Edward 32	Horton 31
Bouchard 47	Efferson 7, 9, 11	Hudson 13
Boucher 43, 48	Effie 9	Hunt 1, 2
Bourbonnais 44	Evans 29	Hunter 31
Brandley 26	Farmer 29	Hurlburt 36
Brantley 26	Farrinton 13	Jackson 31, 32
Bridges 26	Faulkner 29	James 31
Bright 26	Fortin 43, 47, 49	Jane 7
Brooks 26	Frano 6	Jarivet 48
Brown 26, 27	Gagne 48, 49	Jennings 12
Bryson 27	Gagnon 49	Jette 43
Burks 28	Gamache 48, 49	Jimerson 31
Burley 28	Gardner 29	Johnson 1, 2, 14, 15, 30, 31
Burns 28	Garnett 9	Johnston 36
Burris 28	Gerline 9	Jones 30, 31, 32
Butler 13	German 29	Joseph 8
Cain 27, 28	Gertie 9	Keoun 12, 13, 14
Campbell 7, 10, 28	Giffard 47, 48	Kintzing 6
Cargile 28	Giles 15	Labranche 48
Carmicker 28	Glasscock 8	LaForest 43, 45
Caron 48	Godin 48	Lamarche 44
Carpenter 36	Goldsby 29	Lane 25

## SURNAME INDEX

[A surname may appear more than once on a page.]

Langelier 44	Poe 16	Swindle 12
Lauzon 48, 49	Polk 9	Swingle 36
Lavye 47	Pounds 33	Swinson 34
Lazarus 21, 43	Qualls 33	Sylvester 32
LeClerc 43	Quarles 30	Tanguay 43
LeMercier 48	Quintin 44	Taylor 20, 21, 23
Lenoir 32	Rabun 33	Thomas 34
Leonhardt 35, 36	Ragueneau 49	Thornton 34
Lereau 47	Ramage 48	Tisdale 6
LeSource 21	Rayford 33	Trindle 35, 36
Lessard 49	Reese 32	Trotter 34
LeTardif 48, 49	Rehfield 36	Tyler 34
Lewis 35	Riggs 9	Vanhook 34
Mace 48	Rivers 33	Voyer 48
Mallory 18, 19	Roberson 14	Walker 34
Margaret 8, 9	Robinson 32, 33	Warren 34
Martindale 36	Rocheron 47	Weeks 15
Mateel 9	Rodgers 13, 14, 25	Weiland 1, 2, 35
Mathews 2, 20	Rogers 13, 15, 33	West 1
Matlock 14, 15	Rose 1	Whatley 25
Mays 15, 32	Rouillard 47	White 34
McCormick 30	Rudy 36	Williams 20, 34
McDonald 6, 13	Sanders 18, 19	Wills 34
McKellar 14, 15	Schmitt 6	Wilson 27, 34
McKigney 9	Scholes 1, 2	Wise 1, 2, 13, 14
McLone 30	Scott 33	Woods 26
Millen 2	Settoon 8	Worley 34
Mills 16, 42	Sharpe 35, 36	Wright 34
Mitchell 8, 27, 32	Simeon 7, 8, 9, 11	Young 27
Moore 7	Simmons 8	
Moran 6	Slattery 20, 38	
Morel 49	Smiley 9	
Nachod 7, 9, 10	Smith 7, 9, 18, 19, 33, 34	
Nevels 33	Sockrider 20	
Nichols 33	Spence 6	
Norsworthy 32, 33	Spiller 8	
Owens 2, 33	Spink 8	
Paris 49	St. Clair 7, 8	
Patterson 8	Starks 27	
Persinger 36	Stephens 34	
Peterson 1	Stepps 34	
Phelps 12, 13	Stevens 34	
Phillips 33	Streets 8	
Picard 48	Sue 16	
Pilot 32	Sutton 34	