



---

VOLUME 44

SECOND QUARTER 2010

NUMBER 2

---

PUBLISHED QUARTERLY BY

ARK-LA-TEX GENEALOGICAL ASSOCIATION, INC.

P.O. BOX 4463  
SHREVEPORT, LOUISIANA 71134-0463

# THE GENIE

VOLUME 44

SECOND QUARTER 2010

NUMBER 2

## TABLE OF CONTENTS

### FEATURES

**52** How to Organize a Hobby  
Family Reunion  
From the Staff: The Hobby Family  
News and Family Bulletin Board

**54** One Descendant of Jacob  
Bodenheimer, a Jewis Immigrant  
in Northwest Louisiana  
Submitted by Philip Adderley, CG  
[Continued from 1st Qtr 2010]

**65** Bossier Parish Slave  
Marriage Records  
Submitted by Dale Jennings

**71** How Do You Get A Copy Of A  
Marriage Record?

**73** Jerusalem Missionary Baptist  
Church Cemetery [Mer Rouge, LA]  
Submitted by Isabelle Woods

**85** Strand Theatre; Crockett and  
Louisiana; 1925 [Historical Shreveport]

**86** First Methodist Church; Head of  
Texas Street; 1913 [Historical  
Shreveport]

**88** ALTGA's Horn-Book: "Lessons  
from Helen and Her North Carolina  
Pearls of Wisdom"  
By Philip Burnett Adderley, CG

**98** Searching For Your Ancestor?  
By Susett Cook

### DEPARTMENTS

**51** The President's Message  
By Jim Johnson

**63** Annual Genealogical Seminar  
John Sellers - Speaker  
Saturday, August 14, 2010

**87** Exchange Periodical Review  
By Constance Whatley

**90** Ark-La-Tex Genealogical Association:  
Alphabetical Membership List for  
2010, with Names Researching.

**ARK-LA-TEX GENEALOGICAL ASSOCIATION, INC.**

Post Office Box 4463  
Shreveport, Louisiana 71134-0463

The *Ark-La-Tex Genealogical Association, Inc.* is a non-profit, non-sectarian, non-political, educational organization dedicated solely to the cause of genealogy. This organization is governed by these purposes:

To collect, preserve, and make available genealogical materials, documents, and records; to encourage an interest in genealogy and to sponsor educational programs for its development; to promote and publicize the City of Shreveport, Louisiana, as a major genealogical research center for genealogists and historians; to cooperate with and assist all other genealogical, historical, and patriotic societies in the furtherance of these purposes; to compile and publish a quarterly composed of records and data related to the science of genealogy.

The *Ark-La-Tex Genealogical Association, Inc.* meets on the second Saturday of each month from 1:00 p.m. to 3:00 p.m. at the Randle T. Moore Senior Citizen Center, 3101 Fairfield Avenue, Shreveport, LA.

Dues for membership from January 1 through December 31 of each year in the *Ark-La-Tex Genealogical Association, Inc.* are \$20.00 for an Individual Membership and \$25.00 for an additional family member, same household, and one quarterly per household.

All members receive four issues of The GENIE, which is published quarterly.

The *Ark-La-Tex Genealogical Association, Inc.* will publicize a book of genealogical interest in The GENIE when submitted by the publisher or an author. These books are then donated to the Shreve Memorial Library, Broadmoor Branch Genealogy Department, 1212 Captain Shreve Drive, Shreveport, Louisiana 71105, where they are made available to the public. The Ark-La-Tex Genealogical Association, Inc. periodically donates other genealogical material to this library.

The *Ark-La-Tex Genealogical Association, Inc.* welcomes queries, which are published free in The GENIE. A query must be no more than seventy (70) words, either typewritten or legibly handwritten.

## Statement of Publication

[Ark-La-Tex Genealogical Association, Inc.]

**The Genie** is published quarterly with issues in March, June, September and December. Each member receives four issues for each year of membership. All material published in **The Genie** is compiled and contributed by the members. Members and nonmembers of the Ark-La-Tex Genealogy Association may contribute material for publication in *The Genie* (*bible records, cemetery listings, diaries, wills, etc.*). Such contributions are appreciated and encouraged. Send material for publication to *The Genie* at the Association's mailing address. Material will be used at the discretion of the Editorial Review Board as space permits. We reserve the right to edit and/or condense material as needed. Submission deadlines are the last week before the first day of the month of quarterly publication.

The Association *exchanges periodicals* with other genealogical and historical organizations publishing data of general interest. These periodicals are then donated to the Broadmoor Branch *Genealogy* Section of the Shreve Memorial Library. We regret that we cannot exchange with limited family organizations. However, send samples of your publications for review. Since many publications possess information of value concerning families contain therein.

When *Cemetery Records* are submitted, include the name of the contributor, the copier, date copied and cemetery locations (such as road name or number, community, etc.) and also the Section, Township, and Range, if known. When *Bible Records* are submitted, give date and publisher of the Bible (if known), date copied, name of the contributor, name of present owner and the original owner.

**Queries** are free and encouraged. Please submit them typed or very plainly written. Space is limited. Please be brief and concise, using no more than 70 words per query. The editor reserves the right to edit or reject queries not suitable for publication.

The *Genie* cannot be responsible for errors or inaccuracies, but will hasten to publish corrections. Please read the material carefully and advise the Association in writing of corrections.

This publication is *indexed* in the Periodical Source Index published by the Allen County Public Library Foundation, Ft. Wayne, IN.

### Copyright Laws

All who submit material from any source should be aware of copyright restrictions. When applicable, permission to use published material must be in writing and should be included when manuscript is submitted. Source and date of information used should be indicated.

**Ark-La-Tex Genealogical Association  
BOARD OF DIRECTORS FOR 2010**

|                         |                      |                            |
|-------------------------|----------------------|----------------------------|
| President               | Jim Johnson          | jjohnson747@suddenlink.net |
| First Vice President    | Reed Mathews         | reedmathews@yahoo.com      |
| Second Vice President   | Glenda E. Bernard    | gebernard@bellsouth.net    |
| Recording Secretary     |                      |                            |
| Corresponding Secretary | Raymon Owens         | blickblaque@shreve.net     |
| Treasurer               | June L. Scholes      | jscholez@aol.com           |
| Trustee                 | Cynthia D. Millen    | cmillen@netzero.net        |
| Trustee                 | Marilyn B. Christian | mbcspirit@aol.com          |
| Trustee                 | Edwina Wise          | burrowswise@aol.com        |
| Trustee                 | Doris B. Hunt        | dbhunt7@bellsouth.net      |
| Past President          | Willie R. Griffin    | wraygriffin3@bellsouth.net |

**PUBLICATION (THE GENIE)**

|              |                      |                            |
|--------------|----------------------|----------------------------|
| Editor       | Willie R. Griffin    | wraygriffin3@bellsouth.net |
| Book Reviews | Herman L. Weiland    | (318) 746-5811             |
| Printing     | Willie R. Griffin    | (318) 631-6031             |
| Labels       | Michael E. Broussard | (318) 222-1046             |
| Exchange     | Constance Whatley    | cwhatley2@comcast.net      |
| Bulk Mailing | Reed Mathews         | reedmathews@yahoo.com      |

**ALTGA COMMITTEES**

|                       |                      |                            |
|-----------------------|----------------------|----------------------------|
| Hospitality           | Chris Stoll          | (318) 746-0383             |
| Telephone             | Constance Whatley    | cwhatley2@comcast.net      |
| Programs              | Jim Johnson          | (318) 746-1851             |
| Programs              | Edwina Wise          | (318) 865-7957             |
| Publicity and Greeter | Chris Stoll          | (318) 746-0383             |
| Education Committee   | Phil Adderley        | phil@311research.com       |
| Education Committee   | Glenda E. Bernard    | gebernard@bellsouth.net    |
| Education Committee   | Marilyn B. Christian | mbcspirit@aol.com          |
| Education Committee   | Doris B. Hunt        | dbhunt7@bellsouth.net      |
| Web Page              | Jim Johnson          | (318) 746-1851             |
| Seminar               | Jim Johnson          | jjohnson747@suddenlink.net |
| Membership            | Reed Mathews         | (318) 797-6550             |

**Visit our website: <http://www.rootsweb.com/~laaltga/>**

## President's Message

In recent months, we have seen a welcome surge of interest in researching family history. This is perhaps due to the recent NBC television series "Who Do You Think You Are" and the PBS production "Faces of America". Both programs focused on the ancestral research of prominent Americans or celebrities by professional genealogists, and offered a great presentation of the types of information that can be found on one's ancestors. Also contributing to this increased interest is a growing list of genealogy web sites and online data bases. A large amount of research can now be done online and without leaving home. This added interest in family history research has contributed to a significant increase in our membership this year.

Our association continued to provide a number of educational programs this quarter. In April, our featured speaker was Jeff Girard, Regional Archaeologist at Northwestern State University. His topic was "The Caddo Indians of Northwest Louisiana", and covered previous archeological studies done in the area that gave a good indication of when, where and how the early Native American population lived. At our monthly meeting in May, Reed Mathews, our 1<sup>st</sup> vice president and genealogy librarian, gave an enlightening presentation on what we can expect from the 1940 United States Census when it is released in April 2012. Our June speaker was Pamela Carlisle, a historian and public outreach specialist at the Bossier History Center, and her topic was: "Homegrown and Home-Raised in Bossier Parish". She gave a very interesting presentation that included numerous photographs of yesterday's farmers and hunters growing, harvesting, and preserving a variety of foods during the early 20<sup>th</sup> century.

During May, we offered beginning genealogy classes to a record turnout. The first session taught the basic essentials of beginning genealogy research. The second session, designed to appeal to both beginners as well as more experience researchers, included other learning opportunities, a moderated question and answer panel, and concluded with a tour of the Broadmoor Branch Genealogy Department. Total attendance for both classes was 115, and we welcomed 25 of those as new members of our association. Special thanks to Philip Adderley, CG; Glenda Bernard; Reed Mathews; and Isabelle Woods for their outstanding efforts in making these classes a huge success. Also, adding to the success of this endeavor was Lise' Taylor and her Broadmoor Branch Library Genealogy Department staff, who provided excellent support.

In this letter, I want to recognize a long time member and leader of our association who continually contributes in a number of ways. In his twenty years as a member, Reed Mathews has served as President, 2<sup>nd</sup> Vice President, Trustee, and is currently serving as 1<sup>st</sup> Vice President. As an active member of the board of directors, he has involved himself in every facet of operations, and is frequently called on for advice in conducting our business affairs. Reed is also our computer consultant, and in the early stages of internet, he designed and set up our first web site. He is a key instructor of our genealogy classes and in addition, is actively involved in the preparation and distribution of The Genie. As a librarian, he routinely provides expert guidance and assistance to our members, as well as other library patrons with their genealogy research. We are very fortunate to have Reed as a member and officer of our association.

Jim Johnson  
President

# How to Organize a Hobdy Family Reunion

*From the staff: The Hobdy Family News and Family Bulletin Board,  
Denver, CO, Maxwell MacMaster, Editor.*

**It** is never too early to start planning your Hobdy family reunion. Your reunion can be as small as a family picnic in a local park or as large as a special weekend with relatives attending from all over the country and even other countries.

The type of Hobdy reunion will be determined by how much contact or networking you have within the family. For your first reunion you may wish to invite those of the local families. With each successful reunion, plans can be made to encourage attendance from those who live farther away.

It does not always have to be inter-related families. You could have a Clan Gathering with others sharing the Hobdy surname. You may even find a long lost relative where you least expect him.

Small or large, there are a number of ways to make your Hobdy reunion memorable. Special events at a family reunion will help to make it unique to those who attend.

You could have different colored name tags for each branch of the family tree represented at the gathering. Sturdy name tags are needed if people have to wear them for more than a couple of hours.

You could have a video buff interview those attending. Have them tell about family memories, special events through the past year or thoughts about just being all together.

A memory booklet is one way of sharing the older generations with the younger ones. Have someone interview the older family members or tape record the interview. Be sure to have them include personal comments about their happiest times or their saddest ones. Events that happened to them or the family would be of interest to the younger generations. These interviews could be made into a small booklet and shared with all attending.

A family cookbook can be a memorable souvenir. *Everyone, including* small children, could bring or send in their favorite recipe. You could suggest that they be typed on index cards. These cards could be copied without having to be retyped and can easily be arranged into a booklet. This booklet could be available for sale before the gathering breaks up. Be sure to save some pages for your old Hobdy family recipes.

When having your reunion at a hotel, try to have a hospitality room or a genealogy room where people can easily meet each other and yet learn more about the Hobdy family. Computer printouts of all the family could be hung on the walls or have someone from each branch be responsible for listing their line of family members. Have family photos, heirlooms or other items of interest displayed in this room. A supply of ancestor charts or family group sheets could be for sale to those who wish to pursue their family history from the material available in the room.

Do consider having a "how to get organized" session for those new at family histories. Set aside time to help those who are interested in researching the family further. If possible, have someone show slides of your ancestor's town, village or country. Be sure to show cemeteries and churches as well as important places of interest.

In large groups there is a tendency to stay around and talk with those we know. Try to mix up the group at tables or plan games to find out who, what or where about different family members.

For all family gatherings, organization, mailing, stationary, phone calls all take money and costs can mount up fast. Be realistic in computing the costs of the gathering. Keep accurate records so that those involved next year can have a good idea of the costs involved even if some of the costs were donated. For reunions to be successful and grow there has to be one person with good organizational skills along with a support committee willing to give time to the family. If your family is spread throughout the country, you may wish to consider dividing up into area units with a contact person in each of the areas.

Family reunions are fun and can foster interest in the Hobdy family history and genealogy. With each family gathering every generation will have a wonderful time and lasting memories getting to know all of their family.

**Finally, ADVERTISE YOUR REUNION IN THE TOWN'S DAILY NEWS!**



## One Descendant of Jacob Bodenheimer, a Jewish Immigrant in Northwest Louisiana

Philip Burnett Adderley, CG<sup>SM</sup>

[continued from the previous issue of *The Genie*]

2. **Emanuel Mahne Bodenheimer**, son of Jacob Bodenheimer and Eliza Weil, was born possibly 13 April 1860, in Bossier Parish, and died 5 November 1939, in Shreveport, Caddo Parish, Louisiana.<sup>156</sup> Emanuel married **Ella Bertha Levy** on 22 February 1882 in Shreveport.<sup>157</sup> She was born possibly 7 March 1865 in New Orleans, Orleans Parish, and died 23 October 1907, in New Orleans.<sup>158</sup> Emanuel and Bertha were buried together in Hebrew Rest Cemetery II, Shreveport.<sup>159</sup>

In 1870 there was a good likelihood that Emanuel was enumerated twice: once as the only white student boarding with H. Bradford, a black farmer in Bellevue listed with no real estate;<sup>160</sup> and once in his mother's Shreveport household, age 10, previously discussed. Lazarus Bodenheimer had not yet sold the 38 acre Bodenheimer homestead in Bellevue,<sup>161</sup> and Bradford's location was five census households from John H. Lofton, in whose household H. Bodenheimer (probably brother Henry), age 17, appeared as a grocer clerk.<sup>162</sup> It was hypothesized that Bradford was renting or sharecropping on the homestead, and that Emanuel lived there while attending school.<sup>163</sup>

The 1880 census enumerator found an E. Bodenheimer working as a clerk within a mixed group of 14 business people supporting what may have been M. J. Goldsmith's mercantile establishment in Shreveport.<sup>164</sup> He was not enumerated with his mother and sister in his brother-in-law Simon Levy, Jr.'s household,<sup>165</sup> in his brother Henry's household,<sup>166</sup> or separately in another Caddo or Bossier Parish household. Mahne's return to

---

© 2010, Philip Burnett Adderley, CG, 9828 Deepwoods Drive, Shreveport, Louisiana, 71118; email: phil@311research.com. CG and Certified Genealogist are Service Marks of the Board for Certification of Genealogists, used under license after periodic evaluations by the Board, and the board name is registered in the US Patent & Trademark Office.

<sup>156</sup> Louisiana State Department of Health, death certificate 13855 (1939), Emanuel M. Bodenheimer; Louisiana State Archives, Baton Rouge. Hebrew Rest Cemetery II (Shreveport, Caddo Parish, Louisiana), Emanuel M. Bodenheimer marker, plot 77; read and transcribed 13 August 2004 by Philip Adderley (Shreveport, Louisiana).

<sup>157</sup> Caddo Parish, Louisiana, Marriage Book 14: 169, Emanuel Bodenheimer and Miss Bertha Levy, 1882, marriage bond, license, and return; Clerk of Court's Office, Shreveport. Emanuel Bodenheimer-Bertha Levy marriage notice, *Shreveport (Louisiana) Times*, 23 February 1882, page 4, column 3; Bodenheimer and "Miss Ella Levy" were married on 22 February at the residence of Ella's mother, by "Rabbi Hess." Emanuel was also referred to as "Manie."

<sup>158</sup> Hebrew Rest Cemetery II (Shreveport, Caddo Parish, Louisiana), Bertha Levy Bodenheimer marker, plot 77; read and transcribed 13 August 2004 by Philip Adderley (Shreveport, Louisiana); the dates inscribed for birth and death were 7 March 1865 and 23 October 1907. Louisiana State Department of Health, death certificate 0205 (1947), Gabe M. Bodenheimer; Louisiana State Archives, Baton Rouge; stating his mother Bertha Levy's birthplace as New Orleans, Louisiana. Caddo Parish, Louisiana, "Register of Death 1874 - July, 1912," Book C, folio 98, Bertha Bodenheimer entry, 24 October 1907; Bertha was listed a married, white, non-resident of Caddo Parish, no age at death given, and her parents' names and nativities were not stated. Her certification of death in the Caddo Parish death register, even though she died in New Orleans, was a requirement imposed by an 1869 Shreveport city ordinance before burial could take place—see Judy Riffel, *A Guide to Genealogical Research at the Louisiana State Archives* (Baton Rouge, Le Comité des Archives decedent estate la Louisiane, Inc., 200), 22. The date of death entered in Book C was one day after that carved in the marker. The register date is possibly in error, perhaps being the date when entered into the register, given the movement of her body to Shreveport and the lack of age and parental details.

<sup>159</sup> Hebrew Rest Cemetery II (Shreveport), Emanuel M. Bodenheimer and Bertha Levy markers, plot 77.

<sup>160</sup> 1870 U.S. Census, Bossier Parish, Louisiana, population schedule, Bellevue post office, page 74, dwelling 328, family 303, H. Bradford; digital image, *Ancestry.com* (<http://www.ancestry.com> : accessed 30 May 2005); citing NARA microfilm publication M593, roll 507.

<sup>161</sup> Bossier Parish, Louisiana, Conveyance Book 11: 470-1, Lazarus Bodenheimer to John Keyser, 21 April 1880; Clerk of Court's Office, Benton.

<sup>162</sup> 1870 U.S. Census, Bossier Parish, Louisiana, population schedule, Bellevue post office, page 74, dwelling 317, family 298, J. H. Lofton; digital image, *Ancestry.com* (<http://www.ancestry.com> : accessed 30 May 2005); citing NARA microfilm publication M593, roll 507.

<sup>163</sup> Cole, "Jewish Pioneers of Northwest Louisiana: the Bodenheimer Family, 1820-1900," 81, the author noted that the school Bellevue Academy was organized in 1859, no source cited.

<sup>164</sup> 1880 U.S. Census, Caddo Ph., La., pop. sch., Shreveport, ED 20, p. 75, p. 398C (stamped); dwell. 663, fam. 739, W. A. McCutcheon.

<sup>165</sup> 1880 U.S. Census, Caddo Ph., La., pop. sch., Shreveport, ED 21, p. 4, dwell. 43, fam. 54, Simon Levy.

<sup>166</sup> 1880 U.S. Census, Bossier Parish, Louisiana, population schedule, enumeration district [ED] 12, page 13, dwelling 119, family 119, William Mercer; digital image, *Ancestry.com* (<http://www.ancestry.com> : accessed 1 August 2005); citing NARA microfilm publication T9, roll 449; enumerated with Mercer and his wife were Henry Bodenheimer and his wife Cora.

Shreveport working as a clerk was in accordance with his son's narrative about the family—the following year 1881 also found him in the city, this time clerking for Ben Holzman.<sup>167</sup> Emanuel may have been the informant for the 1880 entry. If so, perhaps he intentionally overstated his age, as none of the other five clerks were minors under 21. It was more likely, however, that another business person was the informant for Emanuel's information, making the age entry suspect.

The day before Emanuel married Bertha in early 1882, he bought for \$1150 cash what was probably the couple's first homestead in Shreveport, Lot 6 of Block 56 with buildings and improvements.<sup>168</sup> The property was on the east side of Spring Street, about two blocks west of the Red River, and three blocks north of Texas Street.<sup>169</sup> Although the sale of the property to (possibly) Ben Holzman has not been located,<sup>170</sup> it most likely happened between 1881 and 1882, based upon a comparison of successive city directories. In 1881 Emanuel resided on Spring Street, clerking for Ben Holzman,<sup>171</sup> but by 1882-1883 he resided with his mother Mrs. Elizabeth Bodenheimer in Simon Levy, Jr.'s home.<sup>172</sup>

Dr. Jacob Bodenheimer wrote that his uncle Henry worked for while for Abram Brill's father-in-law in Greenwood, Mississippi, before subsequently settling in Bossier Point, Koran, and then Haughton, all in Bossier Parish. From there Henry returned to Shreveport and started a business with Emanuel.<sup>173</sup> That probably happened on or after 29 March 1887 when Henry sold to his brother-in-law Simon Levy, Jr., the "Bodenheimer and Mercer Store" and the "Griffin Saloon, both in Haughton for \$1500 cash.<sup>174</sup> Henry appeared as a resident Bossier Parish taxpayer from 1885 through 1889. In 1890 he began paying taxes in Bossier Parish tax as a non-resident.<sup>175</sup>

In 1887, meanwhile, Emanuel acquired Lot 15 in Block 12 of Shreveport, with all buildings and improvements from his brother-in-law Simon Levy, Jr., for \$2000 in cash and notes.<sup>176</sup> This property fronted Crockett Street, between Louisiana and McNeil Avenues.<sup>177</sup> There was indirect evidence that the location eventually became the family's new homestead: when the property and its contents were sold at a Sheriff's auction on 26 May 1894, the inventory included forty-five substantial pieces of household furniture, including three bedsteads and mattresses.<sup>178</sup>

---

<sup>167</sup> Dr. J. M. Bodenheimer, "The Bodenheimer Family," 6, "Mahne ... worked for Ben Holzman for a number of years [in Shreveport]. *Waldo's Shreveport Directory* (1881), p. 16, col. 2, E. Bodenheimer entry as a clerk for Ben Holzman. This was the first of several city directories listing Emanuel working with Holzman.

<sup>168</sup> Caddo Parish, Louisiana, Conveyance Book Y: 721, Albert Rebstock to Emanuel Bodenheimer, deed of sale, 21 February 1881; Clerk of Court's Office, Shreveport.

<sup>169</sup> E. D. Hobbs, *Map of Shreveport, Louisiana*, (Louisville, Kentucky: C.R. Milne & Co., 1848); copy of black and white lithograph, about 18in x 24in, collection 152, map drawer "Shreveport 1836-1872," LSU Shreveport Archives, Noel Memorial Library, Shreveport, Louisiana.

<sup>170</sup> Caddo Parish, Louisiana, Direct Index to Conveyances, entry for Emanuel Bodenheimer to Benjamin Holzman, Lot 6, Block 56. Referencing Conveyance Book 7:369 (1882); this was examined and found not to be what was indexed. The actual sale has not been located.

<sup>171</sup> *Waldo's Shreveport Directory* (1881), 16, column 2, showed E. Bodenheimer, clerk for Ben Holzman, residing on "Sprig [sic] st." The next entry showed L. Bodenheimer [probably Lazarus] also residing on "Spring st."

<sup>172</sup> 1882-1883 City Directory of Shreveport, Louisiana (no place: no publisher, no date), 75; microfilm labeled Misc Film, State Records Louisiana, Shreveport City Directories - 1875-1903 (part), roll number 1, Broadmoor Department of Shreve Memorial Library, Shreveport, Louisiana; the years 1882-1883 appear handwritten without additional description on a frame before directory contents begin.

<sup>173</sup> Dr. J. M. Bodenheimer, "The Bodenheimer Family," 6.

<sup>174</sup> Deed of sale, Henry Bodenheimer to Simon Levy, Jr., 29 March 1887; original instrument no. 04666, Bossier Parish Clerk of Court's Office, Benton, Louisiana.

<sup>175</sup> Bossier Parish, Louisiana, Tax Books 1885: folio 93, 1887: folio 127, 1888: folios 91, 108, 1889: folio 95, and 1890: folio 149; Tax Assessor's Office, Benton. These books itemized and summed assessments for real estate, personal property, and poll taxes.

<sup>176</sup> Caddo Parish, Louisiana, Conveyance Book 4: 558-9, Simon Levy, Jr., to Emanuel Bodenheimer, deed of sale, 14 July 1887; Clerk of Court's Office, Shreveport, for \$2000 in form of \$250 cash and 3 equal notes due 1 Sept 1888, 1889, and 1890.

<sup>177</sup> E. D. Hobbs, *Map of Shreveport, Louisiana* (1848).

<sup>178</sup> Caddo Parish, Louisiana, District Court Records, no. 4321, Ben Holzman v. E. Bodenheimer, 1894; Clerk of Court's Office, Shreveport; the court found for the plaintiff and ordered the sale of Emanuel's property. This was done and documented in Caddo Parish, Louisiana, Conveyance Book 14: 520-1, E. Bodenheimer [Caddo Parish Sheriff Sale] to Ben Holzman, 26 May 1894; Clerk of Court's Office, Shreveport.

By 1890 the two brothers had reportedly started business together above the Phoenix Hotel on Texas Street.<sup>179</sup> Family tradition maintained that they ran a credit business with Red River planters that failed “due to overflows two years in succession,” and that Henry switched to the insurance business while Emanuel went into the dry goods business.<sup>180</sup> There are gaps in surviving Shreveport city directories for the 1890s, but the 1897 issue confirmed Henry working as an insurance agent with H. J. Lancaster on 516 Spring Street, and Emanuel working as a traveling salesman, with no business address or firm identified.<sup>181</sup>

Between 1884 and 1894 the Red River reached five of its ten historical crests as measured at Shreveport. To grasp the severity of these floods, the present-day normal stage of the Red River is about 14.5 feet, flood stage is 30 feet, and a major flood is declared at 33 feet. The river crested at about 42 and 45 feet in successive years, in February of 1889 and 1890 respectively.<sup>182</sup>

The successive floods of 1889 and 1890 were the most likely trigger that led to Emanuel’s financial failure. The evidentiary trail supporting that began with Mahne’s sale of his Crockett Street holding to Jules Dreyfuss (President of the Shreveport Mutual Building Association), on 17 February 1891 for \$2000 cash. On the same day, Emanuel bought it back from the association for \$2000 in the form of a 6-year promissory note, mortgaging both his property and the principal that was accruing via installment payments he was making for 10 shares of capital stock in the association.<sup>183</sup> This was strong indirect evidence that he was trying creatively to raise cash.

Another disastrous flood occurred during the growing season of 1892.<sup>184</sup> It is reasonable to presume that this flood, the second worst in Shreveport’s history, compounded the enormous economic pressure Emanuel might have faced in his attempts to recover his credit business with the local planters. By early 1894, his financial difficulties came to a head in two successive actions.

First, wife Bertha sued her husband for recovery of her paraphernal estate and for separation of bed and board on 28 February 1894. She petitioned for recovery of \$2000 of her paraphernal funds which she claimed her husband used for his own account and that he was now insolvent. She feared “losing her claims against him on account of embarrassed condition of his affairs.” She also petitioned for dissolution of the community of acquets and gains. Judgment was given 28 March 1894 to dissolve the community of acquets and gains, but the \$2000 claim was dismissed. Bertha was granted the right to conduct business in her own right.<sup>185</sup>

Five days later, on 2 April 1894, the Red River crested again at 44.4 feet.<sup>186</sup>

The following month, Emanuel’s creditors, the Shreveport Mutual Building Association, brought suit for non-payment of his debts in Caddo Parish District Court. The court ordered his real and personal property sold at auction, which occurred on 26 May 1894.<sup>187</sup> Even though the Association now owned the property, it

<sup>179</sup> Bodenheimer surname manuscript file, John Ardis Manry Genealogical Papers; Microfilm Publication # 71, Roll No. 1 of 3, Accession # 1999.105.1.A., Bossier Parish Library Historical Center, Bossier City, Louisiana, frames 266-272; citing *The Bossier (Louisiana) Banner*, 13 March 1890 and 4 September 1890, no page numbers specified.

<sup>180</sup> Dr. J. M. Bodenheimer, “The Bodenheimer Family,” 6. The years were not specified.

<sup>181</sup> *Vol. IV Chittenden’s 1897 Shreveport City Directory* (no place: Chittenden’s Directory Company, 1897), 47 and 62.

<sup>182</sup> HAMweather, LLC., “Red River at Shreveport, Louisiana (Gauge SVPL1),” citing NOAA data 41.90 ft (2/3/1889) and 44.70 ft (2/8/1890).

<sup>183</sup> Caddo Parish, Louisiana, Conveyance Book 10: 209-210, Emanuel Bodenheimer to Jules Dreyfuss (President, Shreveport Mutual Building Association), 17 Feb 1891; Clerk of Court’s Office, Shreveport. Caddo Parish, Louisiana, Conveyance Book 10: 210-215, Jules Dreyfuss (President, Shreveport Mutual Building Association) to Emanuel Bodenheimer, 17 Feb 1891; Clerk of Court’s Office, Shreveport.

<sup>184</sup> HAMweather, LLC., “Red River at Shreveport, Louisiana (Gauge SVPL1),” citing NOAA data 45.70 ft (5/28/1892), ranked second in historical crests.

<sup>185</sup> Caddo Parish, Louisiana, District Court Records, no. 4543, Mrs. Bertha Bodenheimer vs. E. Bodenheimer (1894); Clerk of Court’s Office, Shreveport, Louisiana.

<sup>186</sup> HAMweather, LLC., “Red River at Shreveport, Louisiana (Gauge SVPL1),” citing NOAA data 44.40 ft (4/2/1894).

<sup>187</sup> Caddo Parish, Louisiana, Conveyance Book 14: 520-1, E. Bodenheimer [Caddo Parish Sherrif Sale] to Ben Holzman, 26 May 1894; Clerk of Court’s Office, Shreveport. E. Bodenheimer’s property was sold at court-ordered sheriff’s auction to Ben Holzman for \$2001. Property consisted of 10 shares of stock in the Shreveport Mutual Building Association, Lot 15 of Block 12 in Shreveport with all buildings and improvements, and personal property of about 45 substantial pieces of furniture, which included 3 bedsteads, mattresses, etc. The sale was driven by court order issued as part of Caddo Parish District Court case no. 4321, Ben Holzman v. E. Bodenheimer, 1894.

is possible that the owners benevolently allowed the family to continue living at the same location, as *Chittenden's 1897 Shreveport City Directory* listed them both on Crockett Street.<sup>188</sup>

Emanuel began his climb to solvency by working initially as a traveling salesman. Evidence that he did so appeared in Shreveport city directories for 1899, 1900, and 1903.<sup>189</sup> In the 1900 federal census the family rented the house at 611 Cotton Street, and Emanuel worked as a "Drummer," a person who 'drums up' commercial business by taking sales orders.<sup>190</sup>

Positive and negative evidence indicated that the Emanuel and Bertha lived in New Orleans for some of the years leading up to Bertha's death there in 1907. They were absent from Shreveport city directories of 1905, 1906, and 1907.<sup>191</sup> A Shreveport newspaper death notice stated that she and her husband Mahne had formerly resided in Shreveport but "went to New Orleans a few years ago."<sup>192</sup> Her remains were sent to Shreveport for burial, at which time she was recorded in the Caddo Parish Death Register as a non-resident.<sup>193</sup>

By 1910, Emanuel again appeared in Shreveport as a traveling dry goods salesman, and as a widowed head of household renting a home at 1029 Louisiana Avenue, Shreveport. With him lived his son Dr. Jacob Mahne Bodenheimer and his widowed daughter Harriet Goldsmith.<sup>194</sup> In 1913 and 1914, Emanuel continued as a traveling salesman, and he resided with his son at 525 Wall Street.<sup>195</sup>

Mahne switched occupations for the last time in 1915, working an agent in the insurance industry.<sup>196</sup> In 1917 the Shreveport city directory also listed Emanuel M. Bodenheimer as the Mayor of South Highlands, an office he kept until July of 1927, when he played a role in Shreveport's annexation of South Highlands. He was its only mayor.<sup>197</sup>

By 1920 Many lived with his son Jacob and daughter Harriet at 815 Delaware Street, and he would remain there for the rest of his life.<sup>198</sup> Sometime in or before 1922 he became a district manager for the Union Central Life Insurance Company of Cincinnati, Ohio, doing business at 204 Milam Street, Shreveport.<sup>199</sup> This continued until 1934-5,<sup>200</sup> at which time his health failed. His son Dr. Jacob Mahne Bodenheimer attended him from then until he passed on 5 November 1939.<sup>201</sup>

<sup>188</sup> Vol. IV *Chittenden's 1897 Shreveport City Directory* (no place: Chittenden's Directory Company, 1897), 62.

<sup>189</sup> Vol. V. *Chittenden's 1899 Shreveport City Directory* (no place: Chittenden's Directory Company, 1899), 80. Vol. I. *Brueggerhoff and Baird's 1900 Shreveport Directory* (publication pages missing), 49. *Shreveport Directory & Advertising Company's 1903 Shreveport Directory* (no place: Shreveport Directory & Advertising Company, no date), 61.

<sup>190</sup> 1900 U.S. Census, Caddo Parish, Louisiana, population schedule, Shreveport, enumeration district [ED] 42, sheet 1B, 611 Cotton Street, dwelling 15, family 20, E. Bodenheimer; digital image, *Ancestry.com* (<http://www.ancestry.com> : accessed 9 March 2004); citing NARA microfilm publication T623, roll 560. For the term drummer, see Barbara Jean Evans, *A to Zax, A Comprehensive Dictionary for Genealogists and Historians*, 3<sup>rd</sup> ed. (Midlothian, Virginia: Hearthsides Press, 1995), 99-100.

<sup>191</sup> *Southern Directory Company's Shreveport City Directory* (1905) ([Texarkana, Texas]: Southern Directory Company, 1905). *Shreveport City Directory* 1906 (Shreveport, Louisiana: Louis N. Brueggerhoff, 1906); and similar title and publication (1907).

<sup>192</sup> Bertha Bodenheimer death notice, *The Shreveport (Louisiana) Journal*, 24 October 1907, page 3, column 3.

<sup>193</sup> Caddo Ph., La., "Register of Death 1874 - July, 1912," Book C, folio 98, Bertha Bodenheimer entry, 24 October 1907.

<sup>194</sup> 1910 U. S. Census, Caddo Parish, Louisiana, population schedule, Shreveport City, enumeration district [ED] 40, sheet 10A, page 158 (stamped), street address unreadable, dwelling 218, family 235, Emanuel M. Bodenheimer; digital image, *MyFamily.com* (<http://www.ancestry.com> : accessed 24 April 2004); citing NARA microfilm publication T624, roll 510.

<sup>195</sup> *Shreveport City Directory* 1913 (Shreveport, Louisiana: Louis N. Brueggerhoff, 1913), 230. *Shreveport City Directory* 1914 (Shreveport, Louisiana: Louis N. Brueggerhoff, 1914), 143.

<sup>196</sup> *Shreveport City Directory* 1915 (Shreveport, Louisiana: Louis N. Brueggerhoff, 1915), 141.

<sup>197</sup> Hebrew Rest Cemetery II (Shreveport, La.), Emanuel M. Bodenheimer marker, plot 77, below Emanuel's dates of birth and death, the inscription reads "ONLY MAYOR SOUTH HIGHLANDS / 1915-1927." *Brueggerhoff's Shreveport City Directory* 1917 (Dallas: R. L. Polk & Co., 1917), 144, Emanuel M. Bodenheimer listed as the Mayor of South Highlands. Louise Matthews Hewitt, *Days of Building* (Shreveport, Louisiana: The Jewish History Committee of Shreveport, Louisiana, 1965), 59.

<sup>198</sup> 1920 U.S. Census, Caddo Parish, Louisiana, population schedule, South Highlands Village, enumeration district [ED] 40, sheet 25A, page 25 (stamped), 815 Delaware [sic] Street, dwelling 66, family 79, Jake M. Bodenheimer; digital image, *Ancestry.com* (<http://www.ancestry.com> : accessed 24 April 2004); citing NARA microfilm publication T625, roll 608. Louisiana State Department of Health, death certificate 13855 (1939), Emanuel M. Bodenheimer, his address at death being 815 Delaware Street in Shreveport.

<sup>199</sup> *Brueggerhoff's Shreveport City Directory* 1922 (Dallas: R. L. Polk & Co., 1922), 84, 260.

<sup>200</sup> *Brueggerhoff's Shreveport City Directory* 1923 (Dallas: R. L. Polk & Co., 1923), 107, 298; also following years by same title: (1923-4) 298, (1925) 204, (1926-7) 204, (1927-8) 190, (1928-9) 178, (1930) 172, (1933) 119, (1935) 121. 1930 U.S. Census, Caddo Parish, Louisiana, population schedule, Shreveport City, enumeration district [ED] 9-59, sheet 4B, 815 Delaware Street, dwelling 83, family 83, J. M. Bodenheimer; digital image, *Ancestry.com* (<http://www.ancestry.com> : accessed 30 May 2005); citing NARA microfilm publication T626, roll 787.

<sup>201</sup> Louisiana State Department of Health, death certificate 13855 (1939), Emanuel M. Bodenheimer; his son began attending him beginning in 1934. Emanuel M. Bodenheimer obituary, p. 10, col. 6; he had been confined to bed for the previous four years.

Emanuel Mahne Bodenheimer and Ella Bertha Levy were the parents of:

- i. JACOB MAHNE BODENHEIMER, born 28 January 1883, in Shreveport, Caddo Parish, Louisiana, died 16 June 1965, probably in Shreveport.<sup>202</sup> He married Lucille W. Levy,<sup>203</sup> born 23 July 1896, in Evergreen, Avoyelles Parish, Louisiana, died 10 January 1969, probably in Shreveport.<sup>204</sup> Dr. Bodenheimer was a physician of long and distinguished standing in the Shreveport community throughout his life. His first listing as a physician and surgeon in a Shreveport city directory occurred in 1907. By 1909 he additionally worked as a bacteriologist and chemist for the Shreveport Board of Health. Jacob moved his practice into the Hutchinson Building on Texas Street in downtown Shreveport by 1921 and then to the Medical Arts Building by 1930. He continued practicing there for at least the next 30 years.<sup>205</sup> Dr. Bodenheimer served as president of the Shreveport Medical Society in 1920.<sup>206</sup> Dr. Bodenheimer and his wife Lucille have many living descendants, whose information is withheld to respect their privacy.
- ii. HARRIET BODENHEIMER, born 27 September 1884, in Shreveport, died 22 January 1964, in Shreveport.<sup>207</sup> She married on 21 December 1908 in Shreveport, Albert Goldsmith,<sup>208</sup> born 16 March 1878, died 16 December 1909, in Shreveport.<sup>209</sup> Information about Albert and Harriet's living descendants is withheld to respect their privacy.
- + 3 iii. GABRIEL MOISE BODENHEIMER, born probably 1 February 1887, in Shreveport,<sup>210</sup> died 20 January 1947, in Shreveport.<sup>211</sup> Gabriel married (1) Lena Goldberg, 5 Nov 1910, in Houston, Harris County, Texas,<sup>212</sup> and (2) Pearl Rosalie Kaffie, 17 June 1934, in Shreveport.<sup>213</sup>

3. **Gabriel Moise Bodenheimer**, son of Emanuel Mahne Bodenheimer and Ella Bertha Levy, was born probably 1 February 1887, in Shreveport, Caddo Parish, Louisiana,<sup>214</sup> and died 20 January 1947, in Shreveport.<sup>215</sup> Gabriel married first, **Lena Goldberg**, daughter of A. Jacob/Julius Goldberg<sup>216</sup> and probably

<sup>202</sup> Eric Brock, transcriber, Greenwood Cemetery Jewish Section, in Sharon Spaulding, compiler, "Greenwood Cemetery, Caddo Parish, Shreveport, Louisiana," database, ([http://freepages.genealogy.rootsweb.ancestry.com/~crossloch/greenwood\\_cemetery\\_page.html](http://freepages.genealogy.rootsweb.ancestry.com/~crossloch/greenwood_cemetery_page.html) : accessed 7 February 2009), alphabetical entry for Jacob Mahne Bodenheimer, MD., citing location 183 W 1/2.

<sup>203</sup> Caddo Parish, Louisiana, Conveyance Book 1075:565, Jacob M. Bodenheimer, deceased, to his heirs, property transfer by judgment, 1 July 1965; Clerk of Court's Office, Shreveport; Lucille L. Bodenheimer is Jacob's surviving wife.

<sup>204</sup> Brock, transcr., Greenwood Cemetery Jewish Section, in Spaulding, comp., "Greenwood Cemetery ... Shreveport" online database, alphabetical entry for Lucile Levy Bodenheimer, citing location 183 W 1/2.

<sup>205</sup> Louis N. Brueggerhoff, compiler, *Shreveport City Directory 1907* (Shreveport, Louisiana: Louis N. Brueggerhoff, 1907), 180, for "Bodenheimer, J. M. Dr." See additional entries for the doctor under "Bodenheimer" in Brueggerhoff's directories for selected, subsequent years with varying subtitles, specifically: (1908-9) 203, (1921) 261, (1930) 172, (1961) 69. Issues beginning in 1917 were published in Dallas by R. L. Polk & Company.

<sup>206</sup> Brock, *Images of America, The Jewish Community of Shreveport*, 71.

<sup>207</sup> Hebrew Rest Cemetery II (Shreveport, Caddo Parish, Louisiana), Harriet Bodenheimer Goldsmith marker, plot 77; read and transcribed 13 August 2004 by Philip Adderley (Shreveport, Louisiana).

<sup>208</sup> Caddo Parish, Louisiana, Marriage Book 34: 388, Albert Goldsmith and Harriett Bodenheimer, 1908, recorded bond, license, and return; Clerk of Court's Office, Shreveport.

<sup>209</sup> Hebrew Rest Cemetery II (Shreveport, Caddo Parish, Louisiana), Albert Goldsmith marker, plot 77; read and transcribed 13 August 2004 by Philip Adderley (Shreveport, Louisiana).

<sup>210</sup> Louisiana death certificate no. 0205 (1947), Gabe M. Bodenheimer; this was the only record naming a specific day in February, but the year 1888 is believed to be incorrect. The year 1887 is more likely to be correct as it was taken from records in which father Emanuel or Gabe himself were probable informants: 1900 U.S. Census, Caddo Ph., La., pop. sch., Shreveport, ED 42, sh. 1B, dwell. 15, fam. 20, E. Bodenheimer; birth for son Gabe given as February 1887. Also, 1910 U. S. Census, Harris Co., Texas, pop. sch., Houston, ED 92, sh. 17A, p. 107 (stamped), dwell. 198 [marked over with "X"], fam. 237 [marked over with "X"], Louis Blumenthal; Gabe Bodenheimer age 23, inferred birth 16 April 1886- 15 April 1887.

<sup>211</sup> Louisiana death certificate no. 0205 (1947), Gabe M. Bodenheimer.

<sup>212</sup> Cafit Cohen, transcr., wedding announcement for G. M. Bodenheimer and Lena Goldberg, citing *Jewish Herald-Voice*, Houston, Texas, 10 November 1910, page 6, column 3.

<sup>213</sup> Caddo Parish, Louisiana, Marriage Book 85: 470, G. M. Bodenheimer and Pearl Rosalie Kaffie, 1934, recorded bond and license (with original signatures) 16 June 1934, marriage return 17 June 1934; Clerk of Court's Office, Shreveport.

<sup>214</sup> 1900 U.S. Census, Caddo Ph., La., pop. sch., Shreveport, ED 42, sh. 1B, dwell. 15, fam. 20, E. Bodenheimer; birth for son Gabe given as February 1887. 1910 U. S. Census, Harris Co., Tex., pop. sch., Houston, ED 92, sh. 17A, p. 107 (stamped), dwell. 198, fam. 237, Louis Blumenthal; Gabe Bodenheimer, age 23, enumerated as a "Roomer," working as a wholesale dry goods salesman, inferred birth range being 16 April 1886- 15 April 1887. Louisiana State Department of Health, death certificate no. 0205 (1947), Gabe M. Bodenheimer; Louisiana State Archives, Baton Rouge; this was the only record naming a specific day in February, but the year 1888 is believed to be incorrect. The year 1887 is more likely to be correct as it was taken from records in which father Emanuel or Gabe himself were probable informants.

<sup>215</sup> Louisiana State Department of Health, death certificate no. 0205 (1947), Gabe M. Bodenheimer; Louisiana State Archives, Baton Rouge. "G. M. Bodenheimer Funeral Service to be Held Today," *The Shreveport (Louisiana) Times*, 21 January 1947, page 10.

<sup>216</sup> Cafit Fischer Cohen, compiler, "Cafit's Family," database, *Ancestry.com* (<http://awt.ancestry.com/cgi-bin/igm.cgi?op=GET&db=cafi> : last accessed 15 February 2009), citing and transcribing "J. Goldberg, Old Resident of Waco, Dies at His Home," *Waco (Texas) News Tribune*, November 26, 1922; two surviving daughters were "Mrs. B. Rosenberg of Corsicana and Mrs. G. Bodenheimer of McAlester."

Ida/Ada Efron,<sup>217</sup> on 5 Nov 1910, in Houston, Harris County, Texas;<sup>218</sup> and, second Pearl Rosalie Kaffie, daughter of Harris Kaffie and Julia Levy,<sup>219</sup> on 17 June 1934, in Shreveport.<sup>220</sup> Lena Goldberg was born probably in September, between 1886 and 1890,<sup>221</sup> possibly in Waco, McLennan County, Texas,<sup>222</sup> and died 31 December 1924, in Shreveport.<sup>223</sup>

Lena had at least two sisters.<sup>224</sup> She probably came to live with her older sister Ray (Goldberg) Rosenberg in Corsicana, Navarro County, Texas, sometime after her mother's death in 1895.<sup>225</sup> She appeared in the 1900 and 1910 censuses with Ray and her husband Benjamin.

Lena's and Ray's oldest sister Celia Goldberg and her husband Moses David Cohen lived in Houston, Texas, in those years, where Moses worked for a wholesale dry goods business, according to their son Dr. Melvin David Cohen. Melvin related through written reminiscences the early history of his family. He remembered with great fondness the care given to his brother and him by his favorite aunt Lena as the tragedy of his mother's life played out. Sometime after his birth in 1906, when he was too young to recall, it was eventually made known to him that his mother had suffered a mental breakdown and was hospitalized at the State Insane Asylum at San Antonio, Texas. Lena came to the family in Houston and helped Moses raise Chester and himself. Celia was eventually released and returned to the family, and Lena stayed with them "until my mother was able to manage alone."<sup>226</sup>

Lena was conceivably still helping the family in the 1910 timeframe when she met Gabriel Moise Bodenheimer, a bachelor working as a wholesale dry goods salesman in Houston.<sup>227</sup> Perhaps his similar business pursuits crossed those of Lena's brother-in-law. By November of 1910, Gabe had married Lena in Houston, and Celia and Moses Cohen opened their home to visitors following the wedding. Lena's close ties

---

Okl. [emphasis added]. Lena also received a "legacy from J. Goldberg, a resident of Waco Texas," which was listed as part of her succession's inventory in Caddo Parish, Louisiana, District Court Records, no 41795, Succession of Mrs. Lena Bodenheimer; Clerk of Court's Office, Shreveport. Jacob was also known as Julius in this compilation.

<sup>217</sup> Lena's probable mother Ida Efron is inferred from death certificates of older sister Ray (Goldberg) Rosenberg and younger brother Barner Goldberg, each listing Ida Efron as the mother. For these see Cafi Cohen, comp., "Cafi's Family," *Ancestry.com*, citing Texas Department of Health, death certificates no. 32403 (1965), Ray Rosenberg, and no 51233 (1970), Barner Roy Goldberg; Bureau of Vital Statistics, Austin. Ida was also known as "Ada Goldberg," and she lived until 1895: for this see Cafi Cohen, comp., "Cafi's Family," *Ancestry.com*, citing and transcribing Ada Goldberg obituary, *Waco (Texas) Morning News*, April 10, 1895, Mrs. Ada Goldberg was the wife of Julius Goldberg.

<sup>218</sup> Cafi Cohen, transcr., wedding announcement for G. M. Bodenheimer and Lena Goldberg, *Ancestry.com*, Ancestry World Tree Project for Fischer-Knox-Campione-Pryor Family (<http://awt.ancestry.com> : accessed 31 July 2005), citing *Jewish Herald-Voice*, Houston, Texas, 10 November 1910, page 6, column 3, "Mr. and Mrs. M. D. Cohen announce the marriage of their sister Lena Goldberg, to Mr. G. M. Bodenheimer on Saturday evening November 5 ... Mrs. Bodenheimer is at home to her friends at the residence of her sister, ... Blanche street." Hebrew Rest Cemetery II (Shreveport, Caddo Parish, Louisiana), Lena Goldberg marker, plot 122; read and transcribed 13 August 2004 by Philip Adderley (Shreveport, Louisiana); "LENA GOLDBERG / WIFE OF / G. M. BODENHEIMER."

<sup>219</sup> 1900 U.S. Census, Natchitoches Parish, Louisiana, population schedule, Natchitoches, enumeration district [ED] 70, sheet 10B, Second Street, dwelling 193, family 207, Harris Kaffie; digital image, *Ancestry.com* (<http://www.ancestry.com> : accessed 15 February 2009); citing NARA microfilm publication T623, roll 569.

<sup>220</sup> Caddo Parish, Louisiana, Marriage Book 85: 470, G. M. Bodenheimer and Pearl Rosalie Kaffie, 1934, recorded bond and license (with original signatures) 16 June 1934, marriage return 17 June 1934; Clerk of Court's Office, Shreveport.

<sup>221</sup> The month of September appears in three records. The record recorded earliest in time and likely to be closer to the truth was: 1900 U.S. Census, Navarro County, Texas, population schedule, Corsicana, enumeration district 98, sheet 16A, page 124A (stamped), dwelling 329, family 350, Benjamin Rosenberg; digital image, *Ancestry.com* (<http://www.ancestry.com> : accessed 30 June 2004); citing NARA microfilm publication T623, roll 1661; sister-in-law Lena Goldberg was single, 12, born September 1887 in Texas. Her inferred sister Ray was 11 years older. The earliest date of birth: Hebrew Rest Cemetery II (Shreveport, Caddo Parish, Louisiana), Lena Goldberg marker, plot 122; read and transcribed 13 August 2004 by Philip Adderley (Shreveport, Louisiana); birth 12 September 1886. The latest date of birth: Louisiana State Department of Health, death certificate no. 15310 (1925), Lena Goldberg Bodenheimer; Louisiana State Archives, Baton Rouge, birth 28 September 1890.

<sup>222</sup> Cafi Cohen, comp., "Cafi's Family," *Ancestry.com*, citing Texas Department of Health, death certificates no. 32403 (1965), Ray Rosenberg, and no 51233 (1970), Barner Roy Goldberg; Bureau of Vital Statistics, Austin. Place of birth for both Ray and Barner was Waco, McLennan County, Texas. Lena was believed to be born after Ray and before Barner, suggesting Waco as her birthplace.

<sup>223</sup> Hebrew Rest Cemetery II (Shreveport, La.), Lena Goldberg marker, plot 122.

<sup>224</sup> Caddo Parish, Louisiana, District Court Records, no. 39106, Mrs. Lena Goldberg Bodenheimer v. Interdiction, 20 December 1924; Clerk of Court's Office, Shreveport; certified copy of the original instrument held by P. B. Adderley (Shreveport, Louisiana). The court unsealed this record on 26 July 2004.

<sup>225</sup> Cafi Cohen, comp., "Cafi's Family," *Ancestry.com*, citing and transcribing Ada Goldberg obituary, *Waco (Texas) Morning News*, April 10, 1895, Mrs. Ada Goldberg was the wife of Julius Goldberg.

<sup>226</sup> Cafi Cohen, comp., "Cafi's Family," *Ancestry.com*, citing and transcribing Dr. Melvin David Cohen's reminiscences, written 1979-1980, San Antonio, Texas.

<sup>227</sup> 1910 U. S. Census, Harris Co., Tex., pop. sch., Houston, ED 92, sh.17A, p. 107 (stamped), 1513 Rusk [Street/Avenue], dwell. 198, fam. 237, Louis Blumenthal; Gabe Bodenheimer, age 23, enumerated as a "Roomer."

with her sister's Cohen family may explain why her maiden name on the death certificate of her son G. M. Bodenheimer, Jr. was Cohen and not Goldberg.<sup>228</sup>

Gabe and Lena eventually resided in the Katy, Texas area by September 1911. Katy straddled the county line between Fort Bend County and Harris County, southwest of Houston. From there, on the 2nd of September 1911, Mrs. G. M. Bodenheimer visited relatives in Corsicana, Navarro County, Texas, probably her sister Ray Goldberg and family.<sup>229</sup>

They stayed in Katy until at least April 1913.<sup>230</sup> First son Berthold Benjamin Bodenheimer was born in Harris County, Texas on 24 March 1913.<sup>231</sup>

In 1915 Celia (Goldberg) Cohen took her life, according to her son Melvin, while the family was at a summer cottage on the Texas coast. If his personal account was any measure, the immediate family and all those close to them were probably devastated, including Celia's youngest sister Lena. His father remarried about 1917.<sup>232</sup>

Lena and her husband Gabe relocated to Waco, McLennan County, Texas, and they lived for a time at 1805 Columbus Avenue. Gabe registered for the draft on the 29<sup>th</sup> of May 1917, noting that he had been born in Shreveport, Louisiana, and had a wife and a "baby 4 years old." He worked as a traveling salesman for Rothenberg & Schloss, of Kansas City, Missouri.<sup>233</sup> Lena's brother Barner Roy "Barney" Goldberg also lived in McLennan County,<sup>234</sup> and her father Julius lived nine blocks from Gabe and Lena, at 914 Columbus Avenue in Waco.<sup>235</sup>

Gabe and Lena's second son Gabriel Moise Bodenheimer, Jr., was born less than three months later on 15 August 1917. His delayed birth certificate indicated that he was born in Corsicana, Navarro County, Texas.<sup>236</sup> Lena had a "sister Mrs. Ben Rosenberg of Corsicana, Texas."<sup>237</sup> This was the family with whom Lena had lived in 1900 and 1910. It is unproven whether Gabe and Lena actually resided in Navarro County in August of 1917, but it is not unrealistic to suspect that Lena was there with her remaining sister Ray at the time Gabe, Jr., was born.

Lena's nephew Melvin Cohen described her husband Gabriel as having attempted several business endeavors, but that, "none of his ventures succeeded." He remembered visiting one of them with his brother Chester, a dry goods business in Coolidge, Limestone County, Texas.<sup>238</sup> Whether Gabriel's business fortunes waned or more lucrative opportunities in the Oklahoma oil fields presented themselves is uncertain, but by 1920, he worked as commercial trucker in the oil industry. Gabe M. Bodenheimer, his wife Lena, and their

---

<sup>228</sup> Louisiana Department of Health and Hospitals, death certificate 458038 (1994), G. M. Bodenheimer, Jr.; Vital Records Registry, New Orleans; original held by the living widow of the deceased, name withheld to respect privacy. The mother's maiden name was "Lena Cohen."

<sup>229</sup> *The Dallas Morning News*, 2 September 1911, page 6, column 6; digital image, *GenealogyBank.com* (<http://www.genealogybank.com> : accessed 1 January 2009); for Social Affairs subtitled Corsicana, "Mrs. G. M. Bodenheimer of Katy visited relatives here."

<sup>230</sup> Caddo Parish, Louisiana, Conveyance Book 83: 490, G. M. Bodenheimer to J. M. Bodenheimer, power of attorney issued and notarized in Katy, Ft. Bend County, Texas, 14 April 1913; Clerk of Court's Office, Shreveport. Gabe named himself as co-owner of 24 acres in Caddo Parish, Louisiana, purchased 17 May 1912 with his brother Jacob, his sister Mrs. H. Goldsmith, and five cousins.

<sup>231</sup> Texas Department of State Health Services, birth certificate no. 8393 (1913), male infant of M. Bodenheimer and "Miss Goldberg;" Vital Statistics Office, Austin; certified reproduction, serial no. K352761 issued 17 September 2004, held by Philip Adderley (Shreveport, Louisiana).

<sup>232</sup> Café Cohen, comp., "Café's Family," *Ancestry.com*, citing and transcribing Dr. Melvin David Cohen's reminiscences, 1979-1980.

<sup>233</sup> World War I draft card for Gabe M. Bodenheimer, registration no. 1022, 29 May 1917, Waco, McLennan County, Texas.

<sup>234</sup> "Mrs. Bodenheimer, of McAlester, Dies Here," p. 20.

<sup>235</sup> 1920 U.S. Census, McLennan County, Texas, population schedule, Waco City, enumeration district [ED] 110, page 124 (stamped), sheet 2A, 914 Columbus Avenue, dwelling 96, family 137, J. Goldberg; digital image, *Ancestry.com* (<http://www.ancestry.com> : accessed 29 July 2005); citing NARA microfilm publication T625, roll 1830. Texas Department of State Health Services, birth certificate no. 32342 (1922), Julian Goldberg; digital image, *Footnote.com* (<http://www.footnote.com/image/77726131> : accessed 31 December 2008).

<sup>236</sup> Texas Department of State Health Services, delayed birth certificate no. 175 (filed 1982), birth certificate no. 407568, Gabriel Moise Bodenheimer, Jr.; Vital Statistics Office, Austin; certified reproduction, serial no. K429011 issued 9 June 2005, held by Philip Adderley (Shreveport, Louisiana).

<sup>237</sup> "Mrs. Bodenheimer, of McAlester, Dies Here," p. 20.

<sup>238</sup> Café Cohen, comp., "Café's Family," *Ancestry.com*, citing and transcribing Dr. Melvin David Cohen's reminiscences, 1979-1980.

two sons Bert and Gabe, Jr., then resided at 190 Grand Avenue in the city of McAlester, Pittsburg County, Oklahoma.<sup>239</sup> While there, Gabriel joined the Masonic Lodge.<sup>240</sup>

Lena lost her father Julius Goldberg on 25 November 1922. He died at his home on Columbus Avenue in Waco, McLennan County, Texas, at the age of 73. His son Barney Goldberg of Waco informed that "Julian" had been born in Poland on 15 May 1849, and that his parents were Harry and Sophia Goldberg, both born in Poland.<sup>241</sup> Lena received a \$2000 legacy from her father.<sup>242</sup>

Gabe and Lena resided in McAlester through at least 1924. In the latter half of that year Lena visited her brother-in-law Dr. Jacob M. Bodenheimer, staying with him at his Delaware Avenue home in Shreveport, Louisiana. She had been previously treated for about two months for mental illness before being separately evaluated in December 1924. On the 20<sup>th</sup> the Caddo Parish District Court judged her insane and ordered her confined to the Central State Hospital at Pineville, Louisiana.<sup>243</sup>

Lena took her life eleven days later on New Year's Eve.<sup>244</sup> She had lost her mother before she was ten years old, had been raised by her older sister Ray, and had been acknowledged a great caregiver to her older sister Celia's children in her late teens amidst the tragedy of Celia's illness and suicide. Perhaps this early trauma in her life had taken too great a toll. Funeral services for her were held from her father-in-law Emanuel Bodenheimer's home at 815 Delaware Street, and she was laid to rest in Hebrew Rest Cemetery II in Shreveport on 2 January 1925.<sup>245</sup>

Gabe and his two sons relocated to Caddo Parish, possibly as early as October 1925, when G. M. Bodenheimer petitioned and received the order of the Caddo Parish District Court to be named natural tutor to Lena's and his two sons Berthold Benjamin Bodenheimer and G. M. Bodenheimer, Jr.<sup>246</sup>

Whether Gabe himself continued to live in Shreveport from 1925 through 1934 is unclear. Attempts to locate him directly, including a nationwide search in the 1930 federal census failed. He listed himself as a resident of the city when he married Pearl Kaffie before Rabbi Israel Gerstein in Shreveport in 1934.<sup>247</sup> Then he appeared for the first time in a Shreveport city directory as a salesman residing with Pearl at 1734 Line Avenue in 1935.<sup>248</sup>

It was clear, however, that his two sons were raised for part of the time in Shreveport. Bert received a Union Prayer Book as a gift from the B'Nai Zion Temple Sisterhood on 5 June 1927.<sup>249</sup> In 1930 Bert appeared as a student at the Norton Business School, residing with his uncle and grandfather at 815 Delaware Street.<sup>250</sup> G. M. "Jimmy" Bodenheimer, Jr., graduated from C. E. Byrd High School in Shreveport in 1933.<sup>251</sup> Based upon these events, it is suspected that Gabriel with the help of his relatives raised his sons in Shreveport while his job as a traveling salesman and commercial truck driver may have taken him to various parts of the country. For some of the nine-year gap he may have been unemployed, particularly in the years 1929-1934 as the Great Depression set in.

<sup>239</sup> 1920 U.S. Census, Pittsburg County, Oklahoma, population schedule, McAlester City, enumeration district [ED] 206, sheet 4A, page 165 (stamped), 190 Grand Avenue, dwelling 47, family 76, Gabe M. Bodenheimer; digital image, *Ancestry.com* (<http://www.ancestry.com> : accessed 31 July 2005); citing NARA microfilm publication T625, roll 1483.

<sup>240</sup> "G. M. Bodenheimer Funeral Service to be Held Today," *The Shreveport (Louisiana) Times*, 21 January 1947, page 10.

<sup>241</sup> Texas birth certificate no. 32342 (1922), Julian Goldberg.

<sup>242</sup> Caddo Ph., La., District Court Records, no. 41795, Succession of Mrs. Lena Bodenheimer, 1925.

<sup>243</sup> Caddo Ph., La., District Court Records, no. 39106, Mrs. Lena Goldberg Bodenheimer v. Interdiction, 20 December 1924. "Mrs. Bodenheimer, of McAlester, Dies Here," p. 20.

<sup>244</sup> Louisiana State Department of Health, death certificate no. 15310 (1925), Lena Goldberg Bodenheimer.

<sup>245</sup> Mrs. Leona G. Bodenheimer obituary, *The Shreveport (Louisiana) Times*, Shreveport, Louisiana, 2 January 1925, page 7.

<sup>246</sup> Caddo Parish, Louisiana, District Court Records, no. 41445, Tutorship of the Minors of Mrs. Lena Bodenheimer, Deceased, 1925-1926; Clerk of Court's Office, Shreveport.

<sup>247</sup> Caddo Ph., La. Marriage Book 85: 470.

<sup>248</sup> *Brueggerhoff's Shreveport City Directory 1935* (Dallas: R. L. Polk & Co., 1935), 121, Pearl's name appeared in parentheses.

<sup>249</sup> *The Union Prayer Book for Jewish Worship* with front cover engraved "Bert Bodenheimer," privately held by a living Bodenheimer descendant [name and address withheld to respect privacy]; flyleaf holds handwritten inscription signed by the president of the B'Nai Zion Temple Sisterhood, 5 June 1927.

<sup>250</sup> *Brueggerhoff's Shreveport City Directory 1935* (Dallas: R. L. Polk & Co., 1930), 172, entries for Bert, E. Mahne, & Jacob.

<sup>251</sup> "Roster of Byrd High School Graduating Class of 1933," *Byrd High Life*, C. E. Byrd High School, Shreveport, Louisiana, 16 April 1983, entry for G. M. (Jimmy) Bodenheimer.



For the remainder of his life, Gabe and Pearl lived at 1734 Line Avenue in Shreveport. He continued to be listed as a salesman or traveling salesman in various Shreveport city directories from 1935 through 1946.<sup>252</sup> His brother Jacob entered "cigar salesman" on his 1947 death certificate.<sup>253</sup> He had been a member of B'Nai Zion Congregation and El Karubah Temple, the Scottish Rite Masons, and the Elk's Club.<sup>254</sup>

Pearl died in Shreveport sometime before January 1961. She and Gabriel had no issue.<sup>255</sup>

Gabriel Moise Bodenheimer and his first wife Lena Goldberg were the parents of:

- i. BERTHOLD BENJAMIN BODENHEIMER born 24 March 1913, in Harris County, Texas,<sup>256</sup> died in 1989, probably in Shreveport.<sup>257</sup> Bert worked as an attorney in Shreveport for most of his life. At various times he also worked in other capacities: manager for Model Cleaners and Dyers in 1940-1, credit manager for Security Jewelers in 1948-50, insurance adjuster in 1952, manager for Sherwood Homes in 1958, and as salesman for Caddo Office Supply 1961.<sup>258</sup> He was hospitalized for mental illness twice for brief periods in 1938-9 and 1944-5 and recovered each time.<sup>259</sup> He married Mrs. Ouida Hopkins Platt on 20 January 1946 in Caddo Parish.<sup>260</sup> Bert is buried beside his father and mother in plot 122 of Hebrew Rest Cemetery II in Shreveport.<sup>261</sup>
- ii. GABRIEL MOISE BODENHEIMER, JR. born 15 August 1917, in Corsicana, Navarro County, Texas,<sup>262</sup> died 18 April 1994, in Shreveport, Caddo Parish, Louisiana. He was laid to rest on 20 April 1994 in Forest Park Cemetery in Shreveport.<sup>263</sup> G. M. Bodenheimer, Jr., was known as Jimmy or Jim through most of life.<sup>264</sup> He served in the U. S. Army War Department, Adjutant General's Office during World War II.<sup>265</sup> He distinguished himself as an attorney in Shreveport, eventually becoming a senior partner in the law firm of Bodenheimer, Looney, Ritchie, and Jones.<sup>266</sup> Jim married. He and his living wife have several generations of descendants; their identities are withheld in respect of their privacy.

<sup>252</sup> *Brueggerhoff's Shreveport City Directory 1935* (Dallas: R. L. Polk & Co., 1935), 121, entry for Gabe M. Bodenheimer. See additional entries for Gabriel under "Bodenheimer" in Shreveport directories for subsequent years of similar subtitles, specifically: (1936) 68, (1937) 72, (1938) 63, (1939) 66, (1940) 73, (1941) 75, (1946) 76.

<sup>253</sup> Louisiana death certificate no. 0205 (1947), Gabe M. Bodenheimer. Informant Dr. Jacob M. Bodenheimer.

<sup>254</sup> "G. M. Bodenheimer Funeral Service to be Held Today," *The Shreveport (Louisiana) Times*, 21 January 1947, page 10.

<sup>255</sup> Caddo Parish, Louisiana, Conveyance Book 919:217, Pearl K. Bodenheimer to her heirs, property transfer by judgment, 23 January 1961. Per petition of Pearl's surviving brothers and sisters and descendants of a pre-deceased brother, she "was survived by no descendants, nor ascendants, nor husband, that she never adopted anyone, nor was ever adopted by anyone."

<sup>256</sup> Texas Department of Health birth certificate no. 8393 (1913), male infant of M. Bodenheimer (mother maiden name "Miss Goldberg"), 24 March 1913; Texas Bureau of Vital Statistics, Austin.

<sup>257</sup> Hebrew Rest Cemetery II (Shreveport, Caddo Parish, Louisiana), Bert Bodenheimer marker, plot 122; read and transcribed 13 August 2004 by Philip Adderley (Shreveport, Louisiana). The marker simply reads "BERT / 1913 - 1989;" it is the third stone in plot 122, located beside his parents Gabriel M. Bodenheimer and Lena Goldberg.

<sup>258</sup> *Brueggerhoff's Shreveport City Directory 1935* (Dallas: R. L. Polk & Co., 1935), 121, entry for Bert B. Bodenheimer, Attorney-at-Law. See additional entries for Bert under "Bodenheimer" in selected Shreveport directories for subsequent years with varying subtitles, specifically: (1935) 11, (1940) 73, (1941) 75, (1948-9) 76, (1950) 68, (1952) 67, (1958) 65, (1961) 69.

<sup>259</sup> Caddo Parish, Louisiana, Conveyance Book 401:101, Berthold Benjamin Bodenheimer to the Public, Interdiction; 26 September 1938; Clerk of Court's Office, Shreveport. Caddo Ph., La., Conveyance Book 409:145, Bert B. Bodenheimer to the Public, Removal of Interdiction, 9 February 1939. Caddo Ph., La., Conveyance Book 490:601, Berthold B. Bodenheimer to the Public, Interdiction, 5 September 1944. A record indicating his release from the second interdiction has not been found, but it probably occurred before he married Ouida Hopkins Platt in January 1946.

<sup>260</sup> Caddo Parish, Louisiana, Marriage Book 114:240, Bert B. Bodenheimer and Mrs. Ouida Hopkins Platt, 20 January 1946, Clerk of Court's Office, Shreveport.

<sup>261</sup> Hebrew Rest Cemetery II (Shreveport, Caddo Parish, Louisiana), Bert Bodenheimer marker, plot 122; read and transcribed 13 August 2004 by Philip Adderley (Shreveport, Louisiana).

<sup>262</sup> Texas delayed birth certificate no. 175 (filed 1982), Gabriel Moise Bodenheimer, Jr.

<sup>263</sup> Louisiana Department of Health and Hospitals, death certificate 458038 (1994), G. M. Bodenheimer, Jr.; Vital Records Registry, New Orleans; original held by the living widow of the deceased, name withheld in respect of privacy.

<sup>264</sup> Widow and son of G. M. Bodenheimer, Jr., deceased, interview by Philip Adderley (Shreveport, Louisiana), 17 July 2004; interview location and names withheld in respect of privacy.

<sup>265</sup> G. M. Bodenheimer, Jr., World War II Officer Identification Card and dogtags; original artifacts held by the widow of G. M. Bodenheimer, Jr. deceased, name withheld in respect of privacy. The ID card showed G.M Bodenheimer Jr., as a lieutenant in the Army Air Corp, serial number 0-434780. The dogtags showed the same serial number and next of kin B. B. Bodenheimer.

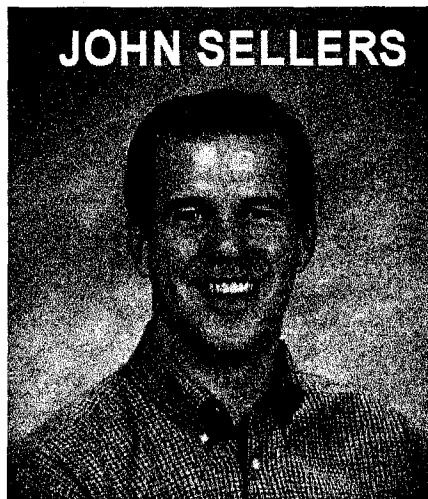
<sup>266</sup> R. L. Polk, compiler, *Shreveport City Directory 1961* (Dallas: R. L. Polk & Co., 1961), 69, entry for G. M. Bodenheimer, Jr. This was the first city directory in which G. M. Bodenheimer, Jr., appeared as a senior partner in a law firm.

The Ark-La-Tex Genealogical Association  
Presents it's Annual  
**Genealogical Seminar**

Saturday, August 14, 2010

Speaker

**ANNOUNCING...**



*A Day of Learning*

**From 8 A.M. Until 4 P.M.**

**At the**

**Broadmoor United Methodist Church [*Pearce Activity Hall*]  
3715 Youree Drive, Shreveport, LA [*Parking on Albany Avenue*]**

John A. Sellers, a fifth generation native of Hopkins County, Texas, graduated from Texas Tech University, with a degree in advertising/public relations and received his teaching certificate in history from Texas A & M Commerce.

Beginning genealogical research in 1985, his favorite area of research is the courthouse, working in Texas, Louisiana, and other places of the South. He was speaker for the Federation of Genealogical

Societies National Conferences in 1997 and 2004 and for the National Genealogical Society National Conference in 1994. He has been the featured speaker at over 40 all day seminars. He is a graduate of Samford University, Advanced Methodology Course.

He compiled an addendum to the 1850 Census of Hopkins Country. He writes for the Quarterly of the Hopkins Country Genealogical Society. He is the author of a historical newspaper article called "Hopkins County Remembered."

He is the administrator for Family Healthcare Association, Sulphur Springs, Texas. He is married and has one child.

### **Schedule and Topics**

- 8:00 AM Registration
- 8:45 AM Opening Remarks
- 9:00 AM "What's Hidden in Courthouse Records?"
- 10:30 AM "What Do You Mean It Burned?"
- 11:30 AM Lunch
- 1:00 PM "History' Role in Your Genealogical Pursuits"
- 2:30 PM "Learning Where Your Ancestors Played, Prayed, Lived and Died"
- 3:40 PM Closing Remarks

The Cost for the Seminar is \$35.00, including lunch if registration is received by August 8, 2010. For information call Jim Johnson at (318) 746-1851 or E-mail him at [jjohnson747@suddenlink.net](mailto:jjohnson747@suddenlink.net).

To register, make your check payable to: Ark-La-Tex Genealogical Association and mail with the registration form found at the Association's Website: [www.rootsweb.ancestry.com/~laaltga/](http://www.rootsweb.ancestry.com/~laaltga/) to: PO Box 4463, Shreveport, LA 71134-0463.



# **Bossier Parish Slave Marriage Records**

By Dale Jennings

Accounts of slave marriages can be gleaned from such sources as old former slave narratives. More than a dozen validated slave marriages are found in Bossier Parish marriage records (1869-1871) – having occurred between the year 1838 and the end of slavery in 1865.

On November 5, 1868, the General Assembly of the Louisiana State Legislature passed into law Act No. 210, "An Act Relative to Marriages," concerning the legalization of previous "private or religious marriages." This Reconstruction-era legislation was not restrictive by race or color. However, it was no doubt primarily intended to legitimize the marital union of ex-slaves, who in most instances had not been accorded any kind of formal, recorded marriage. (The old Louisiana law governing slave marriages, Article 182 of the 1825 Civil Code, simply stipulated that, "Slaves cannot marry without the consent of their masters. Their marriages do not produce any of the effects which result from such contracts.")

The 1868 act provided a two-year window of opportunity to validate such marriages occurring in Louisiana previous to the law's passage. The parties had only to appear before a notary public, make a declaration of their marriage, the date contracted, and the names, sex and ages of all children produced. The union would be legitimized retroactive to its occurrence and have the force of law, with the same benefits and obligations as granted and imposed by existing law. Their children would likewise enjoy all the rights and privileges inherent to legitimate children under existing laws.

Act 210 had no instruction to register the notary certified proclamations of marriage with the parish clerks of court. It cannot be assumed that all of them were. There were seventeen such documents filed in the marriage records of the Bossier Parish Clerk of Court.

Three of the seventeen couples aspiring to legitimize their previous marriage came forward in 1871, after the closing date for eligibility. The notaries nevertheless processed their requests (without any reference to Act 210) and their documents were entered into the parish marriage records like all the others. Only two couples claimed marriages after the year 1865, but both listed children born during the period of slavery.

The notarized proclamations show that all of the applicants were illiterate. Only five couples indicated that they had been slaves. Eleven others were determined to

be black or mulatto through census records. Only one set of marriage partners was identified as white.

There were five instances in which couples gave different last names. This was probably by reason of previous unions as implied either by their declarations or census records. In one instance, both parties declared a prior marriage and named their spouses. Another couple incorrectly using the same surname also named the spouses from their previous marriages. The names of children from previous unions were listed in addition to the children from the current marriage. All but two families had children to be legitimized. The Bossier marriages were notarized by five different notary publics.

Most of those – to be named – who took advantage of legislative Act 210 simply had their marriage proclamation document placed in the parish marriage records. There were variations. Four couples first obtained marriage licenses with the customary marriage bond. Two of these couples took the additional step of being married by a justice of the peace - all on the same day. It is interesting to note that another ninety-two couples between the dates January 16, 1869, and March 21, 1872, (virtually all illiterate and probably predominately African-American) obtained Bossier Parish marriage licenses, but did not make the marriage license return within the required 30-day limit signifying completion of the marriage act. A good assumption might be that they went instead to a notary public for validation of their previous private or religious marriage, but did not then register the proclamation document with the Bossier Parish Clerk of Court.

The following are some particulars of the seventeen marriages, all but two of which were private. Among the most interesting was that of the Stones, the first to take advantage of the new law.

Henry and Eliza Stone had their declaration of marriage notarized by Holland Williamson Clarke in Bellevue on July 4, 1869. They declared that they had been united in marriage on December 24, 1855, by Frederick Haughton, "a colored minister of the Gospel," with the expressed consent of their owners. Their children, with birth dates, are: Ellen, November 17, 1856; Solomon, September 24, 1861; Rachael, October 17, 1863, and Mattie Fort, November 11, 1866. A clue from the naming of their last born led to Bossier Parish Conveyance Book 4, Page 255: Thornton A. Snyder of the partnership T. A. and J. A. Snider, a farming and blacksmith business, sold a single slave to Thomas M. Fort on February 14, 1857. Henry, copper colored, about 25 years of age, and a "blacksmith by trade," was sold to Fort for \$2,200. The 1870 census shows Henry Stone to be age 37 and his wife Eliza to be age 27. Ellen is 13, Tom and Sol are 8, Rachael is 7 and Mattie is 4. They live in the parish seat, Bellevue, and Henry is a blacksmith. He purchased considerable property, to include a 2 ½-acre lot in Bellevue on September 25, 1865, from which he evidently operated his blacksmith shop.

James Alfred Thomas and Elizabeth Thomas declared that they were married on July 4, 1848, by the Rev Mr. Hargis, a minister of the Gospel. They also had the expressed consent of their owners (names unknown). Rev Hargis was probably H. R. Hargis, who according to the history of Redland's Salem Baptist Church, was one of its 1844 organizers and preached its first sermon. The Thomases had their declaration notarized by notary Clarke on January 31, 1871. They listed no children. They cannot be found in either the 1870 or 1880 census.

The Tutt, Johns and Mims families were interrelated and can be traced back to the Skannal slaves. This is best exemplified by the correlation between members of the Johns and Tutt families and two slaves belonging to the Skannal family – Big Mary and her daughter, Little Harriet. This and other connections involved “Queen,” Phillis, Primus and Lucy Bird.

Lloyd and Hulda Skannal brought their slaves to Bossier Parish from their home state of Florida in the mid to late 1840's. On August 7, 1852, they parceled their considerable central and south Bossier Parish land and the slaves, with their increase, to the five Skannal children. The fifty-six slaves were to be kept together under Lloyd's control until a \$9,000 obligation was satisfied. This was a debt resulting from the Skannal's ongoing administration and management of the George Washington Johnson estate back in Jefferson County, Florida. The donations were tied to the debt owed the Johnson heirs. The younger Skannals were to compensate the Johnson children from the profits made by farming the land with the slaves. (Bossier Parish Conveyance Book 2, Page 372)

Jack and Mary Johns were married in 1849. They had their slave marriage validated by notary Runic Burrows Taylor on March 21, 1870. Then they took the added step of being married by a justice of the peace the same day. The Johns listed five daughters and four sons: Phillis 18, Tom 17, Jeff 11, Caroline 10, Judy 9, Jackey 8, Rose 5, Johnny Freeman 4 and Ginny 9 months. Eighteen years earlier, in 1852, Lloyd Skannal had given Big Mary, age 35, and her children Little Harriet 13, June 3 and Phillis 1 to his daughter, Matilda. Included in the group was Jack, age about 31. The Johns show a kinship to the Tutts through “Queen.” Seventeen-year-old Queen Spears is identified as granddaughter in Jack and Mary's household in 1880. The family is not found in the 1870 census, but in 1880 Jack Johns is shown as a 50 year-old black farmer. He indicated that he had been born in Florida, and his father in Africa. Mary is age 55. Still at home are Rose 15, John 14 and Jennie 9, and their granddaughter, Queen Spears.

Reuben Tutt and Harriet Mims had married in January 1869 and had their marriage validated on March 21, 1870, the same day as the Johns. They had a son named Tom, age 5 weeks. Harriet declared that she had married William “Bill” Speer in 1860 and that they had lived together until he deserted her and their seven-year-old daughter “Queen” in December 1868. It's not clear why Harriet wasn't a “Speer,” but she somehow identified with the Mims, a family name taken by several of the Skannal slaves. Reuben declared that he had married Lucy Bird in 1849 and that they had

four children: Primus now 19, William 17, Camelia 15 and Reuben 8. He stated that Lucy had died in December 1868. The Skannal slave Lucy Bird (or Byrd) was probably given a last name to distinguish her from another slave about the same age, Lucy Long. In the 1852 slave conveyance, family groups were identified only by mother and children. Lucy Bird, age 27, had four children, the youngest of whom was Primas, age 1 (also, Dolly, Nancy and George). Another "Primas," a 65-year-old man, was one of the slaves given to Able Skannal. Lucy and her children were given to the Skannal daughter, Charlotte, as was Reuben, age 23. The Tutts cannot be found in the 1870 census. In the 1880 census, Reuben is a 52-year-old black single male with four children still at home: Reuben, Thomas, Henry and Lisa. Primus is now married and in his own household. Reuben Tutt bought considerable property in the parish, to include land from Elias Skannal.

Robert and Rutha An Mims were married in September 1864 and had their union confirmed on October 12, 1870, by Liberty Word Brasher. Their witness was Jorden Mims. Children from the marriage are Josephine and Abraham, both 6, Robert and Jorden, both born January 19, 1867, Spencer 1 year 8 months, and Caroline 5 months. In the 1870 census, Robert Mims, age 45, was living with 25-year-old Loucinda Mims and 17-year-old Sarah Mims. Other children in the household match those in his 1870 marriage proclamation. In 1880, Loucinda and Sarah did not appear. Robert's wife, now called Ruth, is 35. (It would seem that in 1870, Rutha or Ruth may have somehow been misidentified as "Loucinda.") Additional children since 1870 are Mathew 7, Anna 3, and Matilda 5 months. Robert Mims is believed to be the Skannal slave, Bob.

Robert (also called Bob), Jorden and Spencer Mims appear to be brothers. If not true brothers, they were certainly "brothers under the skin" going back to their time as Skannal slaves. The slaves given to Elias Skannal in 1852 included Bob 29 and Jordan 25; as well as Kate 21 and her children Josephine 2 and Caroline 6 months; and Delia 30 and her daughter Charity 13.

Spence, age 35, was given to the Skannal son, Able. Spencer Mims and his family appear in the 1880 census. Spencer is 57 years old, and his wife Harriet is 22. Their three children are ages 5, 3 and 1. In Spencer Mims' 1898 succession, the court ordered that his estate be divided equally between Delia Mims and Charity Davis. The (slave) marriage between Spencer and Delia was declared valid and Charity was declared their legal offspring. It was further ordered that the August 13, 1874 (justice of the peace) marriage between Spencer Mims and Harriet Bradley be declared null and void. (An 1878 Louisiana Court ruling had stated that, "For a valid marriage between slaves, their publicly expressed consent and the consent of their master were alone sufficient, and on their emancipation all the rights and privileges of lawful marriage continue to them and their posterity – Succession of Pearce, 30 La. Ann. 1168." (Louisiana Digest Vol 13 Life Estates – Marshaling Assets and Securities, 1955 (LSUS Library). Included are many other subsequent rulings favoring the legality of slave marriages.

The 1870 census shows Jordan Mims to be a prosperous 50-year-old farmer. His apparent wife Catherine is 45 and their oldest daughter, Josephine 20, is still living at home. Caroline Mims, 18, is living in the nearby household of Peter Harris. Jordan is shown to have been born in South Carolina, as were Robert and Spencer. There was testimony in a 1929 Bossier Parish affidavit that the late Jordan Mims had been married but once to Katie Skannal (a slave girl) sometime prior to 1865. This was one of many such affidavits obtained in 1929 and 1930 incident to proving clear title to some 22,000 acres in south-central Bossier Parish that was being acquired by the City of Shreveport. (Bossier Parish Conveyance Book 97, Page 213, August 16, 1929) The land was then donated by that municipality to the U.S. Government for what would become Barksdale Field and its vast range area (now Barksdale Air Force Base).

Henry and Lydia Stringer had their October 1862 marriage legitimized on March 28, 1870. Their declaration shows that they have a daughter, Virginia Ann, born April 26, 1869. Henry's previous marriage in 1854 was to Lucy Haughton. It produced a daughter, Janette, now about age 14. Lydia had married Frederick Haughton in 1857 and they had a son, Adam, now about 12. They declared that Lucy and Frederick had both died previous to April 26, 1869. The Stringers are not found in the 1870 census, but in 1880 Henry, 47, is now single, and has three daughters in his household: Virginia, Mary and Cela.

The other couples using different surnames are Peter Harris and Agnes Fletcher; Henry Smith and Sallie Johnson; Solomon Franklin and Maria Slaughter; and Miller Scruggs and Eliza Ann Cook. The different names, dates of marriages and ages of children would suggest that there may have been previous, undeclared marriages to which some of the children should have been attributed.

Peter and Agnes claimed two children to be legitimized from their declared 1843 marriage: Pete 3 and Charly 1 year and 3 months. The 1870 census shows Agnes to be age 40 and Peter to be 30. Peter's age and the ages of the children shown (up to age 18) leads one to think that they may have been from Agnes' previous 1843 marriage. Henry and Sallie's 1838 marriage, as proclaimed in August 1869, poses some questions. They claim Nancy 30, Daniel 28, Henry 23, Anderson 21 and Catherine 7. The 1870 census shows Henry Smith, 54 (or 34) and "Sarah," only 35, and the three youngest children. Solomon and Maria declared an 1849 marriage and five children: Abe 18, Christopher 11, Jennie 10, Solomon 5, Eliza 2 ½ and Maria Ann Ellen 6 months. They are not found in the 1870 census, but are found living in Shreveport in 1880. The family jibes with that in their 1869 declaration (notarized by Aiken Adam Mims), but inexplicably "Sol" is shown as age 35 and Maria is 30. Miller and Eliza Ann claimed an 1851 marriage and five children: Henry 18, "Lannie" (?) 14, Saline 12, Hannah 7 and "Abhram" (sp) 6. The Millers cannot be found in any census, but divulged in their declaration that they had been slaves.

William and Rebecca Ross; Reuben and Lucy Dickson; and Nathan and Louise Walker are all found in the 1870 or 1880 censuses. The Rosses were married just



before the end of the Civil War, in January 1865, and acknowledged two children: Milly 4 and David 2. Ruben and Lucy Dickson were married in December 1857 and had their proclamation of marriage notarized on December 3, 1871, by Edward Kendall Russ. Their children are Ailsie 15, Reuben 14, Judge 10, Mary Jane 7, Zella Ann 3 and Simon 9 months. The Walkers were married in December 1859 and had Moses 8, Mathew 7, Stephen 4, Priscilla 3 and Nathan 1. They were the second couple that obtained a marriage license and were married by a justice of the peace. Louise gave her name as Louise "Samson" on the marriage application. The Walkers, like the Rosses and the Dicksons, are African-American as evidenced by the census reports.

The Whites and the Henrys are not found in any census report. Albert and Jane White gave a marriage date of October 15, 1848. They declared that they had been slaves and had no living children. Robert and Mary Henry said in their January 10, 1870 declaration that their marriage had occurred fourteen years previously and that the children from that marriage were Margaret 13, Herbert 11, Hetty 9 and Drew Littleton 3. They too volunteered that they had been slaves.

Williba and Nancy Baken gave their marriage date as December 16, 1866. Their oldest child, Lizzie Jane 3, would have been born during the Civil War and slavery. They also had a son, Williba, 3 months. The "Bakon" family is found in the 1870 census report. Wiloby is 33 and Nancy is 20. They are African-American.

Jim and Kitty Boyd were married in July 1853 and had their declaration of marriage notarized by Edward Russ on December 30, 1871. Their seven children are Augusta 18, Margaret 16, Eliza 14, Jim 12, Jackson 10 ("Stonewall" in the 1870 census) Harriet 3 and Cornelia 1. James Boyd age 35 and his wife Kitty 30 are ascertained by the 1870 census to be white.

It was both surprising and disappointing that careful research did not trace more marriage subjects back to their emergence from slavery. Information from the marriage proclamations, census records, the book series, "No Land-Only Slaves," and other sources seemingly would have produced a better success rate. Edith Smith and Vivian Lehman's book was helpful in revealing the slave to slave owner connections of the Skannal slaves. However, a roadblock to more help from the book is exemplified by the case of Doctor Abel Skannal, most probably the brother of Lloyd Skannal. The Bossier Parish 1860 slave schedule shows that Doctor Skannal had 144 slaves. Yet, not one is found in a Bossier conveyance record – the implication being that Doctor Skannal initiated no slave transactions from the time he brought the slaves here until their emancipation. (Dr. Abel Skannal died in 1876 and is buried in Oakland Cemetery at his Oakland Plantation in south Bossier Parish.) *Some of the individuals who could not be traced back may have been among the Oakland slaves – or a great number of others subject to the same circumstances.*

\*\*\*\*\*

## How do you get a copy of a marriage record? My Slave Ancestors

**Suggestions from:**

<http://www.myslaveancestors.com/vitalrecords.htm>

1. You can order a marriage record for a fee from the county where your ancestors married. *Keep in mind that marriages of slaves were not recorded by county clerks!* You can obtain marriage records for former slaves who married after 1866. Again, response time varies by place. Fax orders can be expedited, but expect to pay an average fee of \$36.00 per certificate, including the cost of overnight delivery. *Beware! Some counties will only search the records for the year you list. If the year you give is slightly off, a year or two in either direction, and they do not find the record based on the information you provide, you will not receive a refund.*
2. You can order copies of microfilmed records from the Family History Center of the Church of Jesus Christ of Latter-day Saints nearest you. Generally, it takes six weeks for a film to arrive and there is a rental fee for the service.
3. You can choose to have a professional record searcher search the indexes and records at the Family History Library. Copies of certificates can be sent by mail or for faster delivery certificates can be scanned and emailed to you.

\*\*\*\*\*

# Cause of Death?

By Susette Cook

The cause of death is listed on the death certificate and can be helpful in finding more records. If it was an accident or shooting or something else interesting then there may also be an article written in the local newspaper.

If the cause was a shooting then there may be criminal case records in the court house that you might find interesting.

Ask around among your family and friends, perhaps someone is a nurse or doctor and they may be able to read the handwriting better than you and tell you exactly what that medical word is and what it means.

It is doubtful that the hospital will give you information medical information for a person. Often the records were destroyed after a few years.

There are medical dictionaries on line that can also be of assistance. Here are a few to try. The first one is very cool.

<http://www.genealogyencyclopedia.com/>

<http://www.online-medical-dictionary.org/>

[http://www.medterms.com/script/main/alphaidx.asp?p=g\\_dict](http://www.medterms.com/script/main/alphaidx.asp?p=g_dict)

<http://academic-genealogy.com/medicalhealthgenealogygenetics.htm>

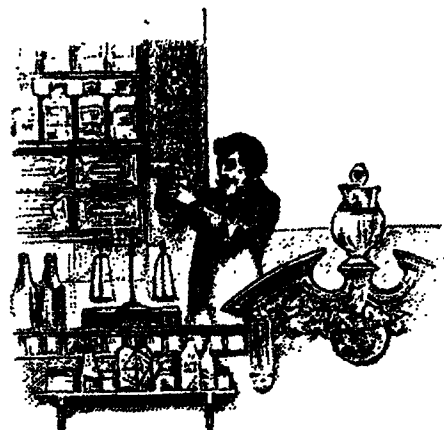
**Susette Cook**

330 Stuart Drive

Odenville, Alabama 35120

Susette\_cook@hotmail.com

<http://www.alabamadeath.com>



# Jerusalem Missionary Baptist Church Cemetery

© 2009 By Isabelle Woods

THIS CEMETERY IS AT THE LEFT AND REAR OF THE JERSUSALEM MISSIONARY BAPTIST CHURCH, 7121 OAK RIDGE ROAD, MER ROUGE, LOUISIANA.

| ID  | NAME (Last, First, Name)    | PRE/SUFFIX | BIRTHDATE   | DEATHDATE   | INSCRIPTION/NOTES  |
|-----|-----------------------------|------------|-------------|-------------|--|
| 229 | ALEXANDER, PRENTICE         |            | 20 MAR 1929 | 26 JAN 1981 | U S ARMY KOREA   |
| 16  | ALLEN, CURTIS MACK          | JR.        | 25 JUL 1970 | 10 NOV 2005 | OBITUARY, BASTROP (LA) ENTERPRISE DTD 17 NOV 2005                    |
| 59  | ALLEN, JAMES HENRY          | JR.        | 1944        | 1966        | MY BELOVED SON. AGE 41.  |
| 60  | ALLEN, QUEENIE              |            | 25 JUN 1923 | 13 FEB 2007 | BORN IN MER ROUGE, LA. FP: PARS-M/M MOLLIE & ESSUL PAY TON           |
| 89  | ALLEY, FRANCES              |            | DEC 1884    | JUN 1962    | VAULT  |
| 216 | ANDERSON, MARY              |            | 01 MAR 1890 | 18 FEB 1971 |  |
| 295 | ARCHIE, S. A.               | SR.        | 28 NOV 1926 | 25 NOV 1992 | FATHER. OBIT., BASTROP (LA) ENTERP. DTD 27 NOV 1992                  |
| 303 | ARMSTRONG, COREAN MORGAN    |            | 05 APR 1918 | 03 DEC 1999 | MOTHER. OBIT., BASTROP (LA) ENTERP. DTD 07 DEC 1999                  |
| 464 | ARMSTRONG, JEWEL (SEAY)     | MRS.       | 20 NOV 1926 | 24 FEB 1996 | OBITUARY, BASTROP (LA) ENTERPRISE DTD 27 FEB 1996                    |
| 61  | ARMSTRONG, JOHN             |            |             | 1946        | BELOVED HUSBAND OF SUSIE ARMSTRONG. VAULT.                           |
| 62  | ARMSTRONG, SUSIE            |            | 1872        | 1977        | VAULT  |
| 148 | ARMSTRONG, WELL             |            | 1926 ?      | 1996        | DOB ILLEGIBLE ON VAULT'S NAME PLATE                                  |
| 37  | ARNOLD, ADLINE              |            | 1884        | 1980        | OBITUARY, BASTROP (LA) ENTERPRISE DTD 21 JUL 1980                    |
| 237 | ARTHUR, GEORGE              |            | 16 OCT 1917 | 20 NOV 1998 | PFC U S ARMY WORLD WAR II  |
| 368 | AUSTIN, OLLIE MAE WINSTON   | MRS.       |             | 05 NOV 1985 | OBITUARY, BASTROP (LA) ENTERPRISE DTD 08 NOV 1985                    |
| 316 | BAILEY, GOODWILL            |            | 16 AUG 1916 | 19 JUN 1995 | PVT U S ARMY WORLD WAR II  |
| 236 | BAILEY, JOHNNIE             |            | 23 DEC 1912 | 31 AUG 1988 | OBITUARY, BASTROP (LA) ENTERPRISE DTD 03 SEP 1988                    |
| 239 | BAILEY, MINNIE B.           |            | 08 NOV 1914 | 17 MAR 2003 | FUNERAL NOTICE, BASTROP (LA) ENTERPRISE DTD 21 MAR 2003              |
| 319 | BAILEY, WILLIE MAE          | MRS.       | 10 JUN 1916 | 27 MAR 1990 | OBITUARY, BASTROP (LA) ENTERPRISE DTD 05 APR 1990                    |
| 378 | BAKER, ELLA                 |            |             | SEP 1977    | OBITUARY, BASTROP (LA) ENTERPRISE DTD 24 SEP 1977                    |
| 281 | BANKS, SUSANNA              |            | 20 MAY 1889 | 28 FEB 1971 |  |
| 127 | BANNER, DAISY DAVENPORT     |            | 14 AUG 1890 | 13 AUG 1976 |  |
| 129 | BANNER, HUGO                |            | 24 JAN 1894 | 7 FEB 1979  | PVT U S ARMY WORLD WAR I   |
| 482 | BANNER, I. V.               |            |             | 21 SEP 1986 | OBITUARY, BASTROP (LA) ENTERPRISE DTD 25 SEP 1986                    |
| 402 | BANNER, ROSIE CARR          |            |             | 09 DEC 1992 | OBITUARY, BASTROP (LA) ENTERPRISE DTD 15 DEC 1992                    |
| 232 | BARBER, ALEX                |            |             | 19 JUN 1937 | LOUISIANA PVT 415 RES LABOR BN QMC                                   |
| 113 | BARBER, JESSIE              |            | 07 JAN 1911 | 23 FEB 1968 |  |
| 322 | BATES, JAMES                | SR.        | 04 JAN 1906 | 14 MAR 1989 | OBITUARY, BASTROP (LA) ENTERPRISE DTD 17 MAR 1989                    |
| 500 | BATES, ROOSEVELT            |            |             | 14 APR 2009 | FUNERAL NOTICE, NEWS-STAR (MONROE, LA) DTD 16 APR 2009               |
| 109 | BIAS, PEARLIE (ALFORD)      |            | 10 AUG 1874 | 02 AUG 1954 | OLD HS: B 24 JULY 1874 DIED 11:30 A.M. AGE 80 YRS 22 DAYS. SEE FN #3 |
| 412 | BLAKELY, BESSIE             | MRS.       |             | 25 OCT 1992 | OBITUARY, BASTROP (LA) ENTERPRISE DTD 30 OCT 1992                    |
| 314 | BLAKELY, LAVELL             |            | 09 DEC 1920 | 15 APR 2004 | AGE 83. FUNERAL NOTICE, BASTROP (LA) ENTERPRISE DTD 20 APR 2004      |
| 287 | BOLDEN, LINDA (FAYE WORTHY) | MRS.       | 05 NOV 1957 | 24 DEC 1995 | AGE 38. FHM. OBIT, BASTROP (LA) ENTERPRISE DTD 29 DEC 1995           |
| 501 | BOUIE, MARY                 |            |             | MAY 2009    | FUNERAL NOTICE, BASTROP (LA) ENTERPRISE DTD 07 MAY 2009              |

JERUSALEM MISSIONARY BAPTIST CHURCH CEMETERY

| ID  | NAME (Last, First, Name) | PRE/SUFFIX | BIRTHDATE   | DEATHDATE   | INSCRIPTION/NOTES  |
|-----|--------------------------|------------|-------------|-------------|--|
| 486 | BOYD, MINNIE             | MRS.       |             | 13 DEC 1992 | OBITUARY, BASTROP (LA) ENTERPRISE DTD 17 DEC 1992        |
| 102 | BRAND?, JAMES LOUIS      |            | 16 JAN 1951 | 26 FEB 1994 | BEST GUESS AT SURNAME                                    |
| 307 | BRANDON, E. L.           |            |             | 24 APR 1948 | ONLY DATE ON HS PRESUMED TO BE DOD                       |
| 446 | BRANDON, ELBERT          |            |             | 21 DEC 1988 | OBITUARY, BASTROP (LA) ENTERPRISE DTD 23 DEC 1988        |
| 462 | BRANDON, ELIZABETH F.    | MRS.       |             | JUN 1988    | OBITUARY, BASTROP (LA) ENTERPRISE DTD 14 JUN 1988        |
| 273 | BRANDON, EZORA MORRISON  |            | 02 SEP 1917 | 14 MAY 1998 | MOMMA. OBIT., BASTROP (LA) ENTERP. DTD 15 MAY 1998       |
| 489 | BRANDON, FRED L.         |            |             | 05 FEB 2008 | F N, BASTROP (LA) ENTERPRISE DTD 07 & 13 JUL 2008        |
| 279 | BRANDON, GILBERT "SKEET" |            | 1923        | 2005        | FUNERAL NOTICE , BASTROP (LA) ENTERPRISE DTD 08 DEC 2005 |
| 272 | BRANDON, IVEY (BILL)     | MR.        | 25 MAR 1908 | 09 APR 1997 | OBITUARY, BASTROP (LA) ENTERPRISE DTD 17 APR 1997        |
| 285 | BRANDON, JAMES           |            | 15 MAY 1962 | 05 MAY 1991 | AGE 29   |
| 362 | BRANDON, JERRY           |            |             | JUN 1979    | OBITUARY, BASTROP (LA) ENTERPRISE DTD 15 JUN 1979        |
| 280 | BRANDON, JESSIE MAE      |            | 06 JUN 1929 | 16 SEP 2002 | OBITUARY, BASTROP (LA) ENTERPRISE DTD 20 SEP 2002        |
| 496 | BRANDON, JIMMIE LEE      |            |             | 25 FEB 2000 | OBITUARY, NEWS-STAR (MONROE, LA) DTD 29 FEB 2000         |
| 283 | BRANDON, LEE DANIEL      |            | 01 AUG 1926 | 15 SEP 1994 | FATHER. OBIT., BASTROP (LA) ENTERPRISE DTD 20 SEP 1994   |
| 274 | BRANDON, O'NEAL "HECK"   | SR.        | 22 NOV 1913 | 14 AUG 1998 | DADDY. OBITUARY, BASTROP (LA) ENTERPRISE DTD 17 AUG 1998 |
| 282 | BRANDON, PEARL           |            | 17 JAN 1891 | 25 FEB 1978 | MOTHER.  |
| 224 | BRANDON, TENNA (TEENA)   |            | 22 NOV 1881 | 27 MAY 1978 | OBITUARY, BASTROP (LA) ENTERPRISE DTD 02 JUN 1978        |
| 450 | BRIGGS, MICHAEL WAYNE    |            |             | 04 JUL 1988 | OBITUARY, BASTROP (LA) ENTERPRISE DTD 08 JUL 1988        |
| 346 | BROOKS, LARRY DONNELL    |            | 20 MAR 1955 | 21 JAN 1990 | OBITUARY, BASTROP (LA) ENTERPRISE DTD 25 JAN 1990        |
| 92  | BROWN, CLEDELL           |            | 28 MAR 1926 | 17 NOV 1998 | FATHER   |
| 329 | BROWN, EDWARD            | BRO.       | 27 MAR 1922 | 17 MAY 1992 | OBITUARY, BASTROP (LA) ENTERPRISE DTD 20 MAY 1992        |
| 171 | BROWN, ELLA DAVIS        |            | 10 MAR 1905 | 26 NOV 1984 | REAR OF HS: "BROWN"                                      |
| 172 | BROWN, ELLIS             |            | 04 JUL 1895 | 18 JUN 1961 | LOUISIANA PVT HQ CO 805 PIONEER INF WORLD WAR I          |
| 330 | BROWN, ELOISE D.         | (MRS.)     | 10 MAR 1905 | 26 NOV 1984 | OBITUARY, BASTROP (LA) ENTERPRISE DTD 30 NOV 1984        |
| 444 | BROWN, FRED              |            |             | MAR 2002    | OBITUARY, BASTROP (LA) ENTERPRISE DTD 22 MAR 2002        |
| 180 | BROWN, GEORGE            |            | 25 NOV 1901 | 09 JUN 1981 | OBITUARY, BASTROP (LA) ENTERPRISE DTD 12 JUN 1981        |
| 181 | BROWN, JAMES C. (CURTIS) |            | 1946        | 2002        | F N, BASTROP (LA) ENTERPRISE DTD 24 SEP 2002             |
| 170 | BROWN, JOHN LAVELLE      |            | 26 JUL 1956 | 12 APR 1989 | SP4 U S ARMY. HS AND VAULT'S NAME PLATE.                 |
| 179 | BROWN, MABLE             |            | 30 MAR 1917 | 01 APR 1978 | OBITUARY, BASTROP (LA) ENTERPRISE DTD 05 APR 1978        |
| 359 | BROWN, MATTIE            | MRS.       |             | MAR 1981    | FUNERAL NOTICE, BASTROP (LA) ENTERPRISE DTD 18 MAR 1981  |
| 420 | BROWN, ROSIE S.          | MRS.       |             | 30 JUN 1995 | OBITUARY, BASTROP (LA) ENTERPRISE DTD 07 JUL 1995        |
| 262 | BROWN, THOMAS            |            | 12 SEP 1981 | 12 SEP 1981 | SON  |
| 458 | BROWN, WILLIE LEE        |            |             | APR 1988    | OBITUARY, BASTROP (LA) ENTERPRISE DTD 30 APR 1988        |
| 331 | BROWN, WINNIE ANN        | (MRS.)     | 15 JUL 1899 | 10 SEP 1980 | OBITUARY, BASTROP (LA) ENTERPRISE DTD 12 SEP 1980        |

JERUSALEM MISSIONARY BAPTIST CHURCH CEMETERY

THE GENIE  
Second Quarter 2010

75

| ID  | NAME (Last, First, Name)         | PRE/SUFFIX | BIRTHDATE   | DEATHDATE   | INSCRIPTION/NOTES  |
|-----|----------------------------------|------------|-------------|-------------|--|
| 243 | BROWNFIELD, RUBY LEE             |            | 07 MAY 1924 | 24 OCT 1968 | LOUISIANA PVT 437 PORT CO T C WORLD WAR II                 |
| 108 | BURKS, EDNA H. (HARPS)           |            | 1915        | 01 OCT 1993 | OBITUARY, BASTROP (LA) ENTERPRISE DTD 07 & 08 OCT 1993     |
| 107 | BURKS, J. C.                     |            | 30 AUG 1897 | 14 FEB 1989 | OBITUARY, BASTROP (LA) ENTERPRISE DTD 17 FEB 1989          |
| 374 | BURKS, WALTER                    |            |             | 25 JUL 1983 | OBITUARY, BASTROP (LA) ENTERPRISE DTD 29 JUL 1983          |
| 505 | BURNETTE, JERRODERICK            |            |             | 22 AUG 2009 | FUNERAL NOTICE, NEWS-STAR (MONROE, LA) DTD 27 AUG 2009     |
| 80  | BURRELL, ANDERSON                |            | 1892        | 1961        | AGE 69. OUR BELOVED HUSBAND AND FATHER                     |
| 305 | BURRELL, DAMONICA MONAY          |            |             |             | STILLBORN. FHM   |
| 306 | BURRELL, LILLIE PHILLIPS         |            | 14 FEB 1984 | 02 ??? 1996 | AGE 12. FHM BEST GUESS MADE ON SURNAME.                    |
| 471 | BURRELL, PHILLIP LYNDELL         |            |             | 03 FEB 1996 | OBITUARY, BASTROP (LA) ENTERPRISE DTD 12 FEB 1996          |
| 488 | BURRELL, ROBERT                  |            |             | 14 JUL 2008 | FUNERAL NOTICE, NEWS-STAR (MONROE, LA) DTD 18 JUL 2008     |
| 320 | BUTLER, ESTELL                   |            | 20 MAR 1887 | 29 APR 1969 | A FAITHFUL MOTHER  |
| 6   | CAGE, BESSIE                     |            | 15 JUL 1916 | 25 JUN 2004 |  |
| 7   | CAGE, FRANK                      |            | 27 SEP 1913 | 10 AUG 1996 |  |
| 395 | CAGE, ROBERTA                    |            |             | OCT 1996    | OBITUARY, BASTROP (LA) ENTERPRISE DTD 25 OCT 1996          |
| 345 | CAIN, CARY ANN                   | (MS.)      |             | JAN 1971    | FP: PARENTS-MINNIE ALEXANDER AND LEE CAIN                  |
| 133 | CAPERS, MELVIN RAY               |            | 09 DEC 1929 | 13 FEB 2002 | F N, BASTROP (LA) ENTERPRISE DTD 15 FEB 2002               |
| 332 | CARTER, BENNIE                   |            | 13 FEB 1903 | 21 AUG 1987 | OBITUARY, BASTROP (LA) ENTERPRISE DTD 25 AUG 1987          |
| 442 | CARTER, BERTHA                   |            |             | 14 AUG 1988 | FUNERAL NOTICE, BASTROP (LA) ENTERPRISE DTD 19 AUG 1988    |
| 288 | CARTER, ISIAH                    |            | 04 MAR 1896 | 18 MAR 1954 | LOUISIANA PVT 350 LABOR BN QMC WORLD WAR I                 |
| 438 | CARTER, L. C.                    |            |             | 24 FEB 1986 | OBITUARY, BASTROP (LA) ENTERPRISE DTD 27 FEB 1986          |
| 27  | CARTER, TWILLIE                  |            | 25 DEC 1910 | 29 AUG 1979 | BROTHER  |
| 19  | CAUSEY, AZENA                    |            | 09 MAY 1931 | 03 MAY 1970 |  |
| 201 | CHAFFOLD, JOHN WESLEY "JUNE BUG" |            | 04 JUN 1946 | 11 MAR 1993 | BROTHER. OBITUARY, BASTROP (LA) ENTERPRISE DTD 12 MAR 1993 |
| 198 | CHAFFOLD, LAURA WINSTON          |            | 05 JAN 1904 | 30 APR 1986 | GRANDMOTHER. OBIT., BASTROP (LA) ENTERP. DTD 03 MAY 1986   |
| 196 | CHAFFOLD, LEO "CHAP"             |            | 16 MAY 1931 | 19 JUL 1998 | OBITUARY, BASTROP (LA) ENTERPRISE DTD 23 JUL 1998          |
| 197 | CHAFFOLD, MAMIE ANNIE MAY ROWDEN |            | 20 JUN 1896 | 31 JAN 1999 | OBITUARY, BASTROP (LA) ENTERPRISE DTD 05 FEB 1999          |
| 177 | CHAFFOLD, MARY ALICE             |            | 03 NOV 1925 | DEC 1973    | DAY OF DEATH ILLEGIBLE ON FHM.                             |
| 491 | CHAFFOLD, MARY ALICE             | MRS.       |             | 04 NOV 1994 | OBITUARY BASTROP (LA) ENTERPRISE DTD 09 NOV 1994           |
| 200 | CHAFFOLD, MARY LEE               |            | 15 FEB 1924 | 28 FEB 1995 |  |
| 372 | CHAFFOLD, ROY LEE                |            |             | 07 SEP 1984 | OBITUARY, BASTROP (LA) ENTERPRISE DTD 13 SEP 1984          |
| 199 | CHAFFOLD, SAM                    |            | 18 NOV 1888 | 13 FEB 1972 | LOUISIANA PVT U S ARMY WORLD WAR I                         |
| 358 | CHAFFORD, LEONARD                |            |             | 13 APR 1984 | OBITUARY, BASTROP (LA) ENTERPRISE DTD 18 APR 1984          |
| 468 | CHATMAN, MARQUEZ ANTONIO         |            |             | APR 1996    | OBITUARY, BASTROP (LA) ENTERPRISE DTD 09 APR 1996          |
| 418 | CHISOM, DAVID                    |            |             | 12 FEB 1993 | OBITUARY, BASTROP (LA) ENTERPRISE DTD 17 FEB 1993          |

JERUSALEM MISSIONARY BAPTIST CHURCH CEMETERY

| ID  | NAME (Last, First, Name)     | PRE/SUFFIX | BIRTHDATE   | DEATHDATE   | INSCRIPTION/NOTES   |
|-----|------------------------------|------------|-------------|-------------|---|
| 128 | CLEVELAND, JAMES             |            | 17 SEP 1910 | 28 JUL 1995 | OBITUARY, BASTROP (LA) ENTERPRISE DTD 31 JUL 1995                   |
| 389 | COMBS, JESSIE LEE            |            |             | 24 OCT 1979 | OBITUARY, BASTROP (LA) ENTERPRISE DTD 26 OCT 1979                   |
| 504 | CONWAY, GILBERT              |            |             | 28 APR 2008 | FUNERAL NOTICE, NEWS-STAR (MONROE, LA) DTD 30 APR 2008              |
| 244 | CONWAY, WARREN               | II         | 12 JAN 1927 | 20 AUG 2000 | BELOVED FATHER  |
| 476 | COOKE, JANICE GREEN          | MRS.       |             | 13 JUL 2000 | OBITUARY, BASTROP (LA) ENTERPRISE DTD 19 JUL 2000                   |
| 38  | COVINGTON, HERMAN LEE        |            | 15 OCT 1947 | 19 OCT 1982 | OBITUARY, BASTROP (LA) ENTERPRISE DTD 26 OCT 1982                   |
| 101 | CURRY, MARTHA (WALTON)       | MRS.       | 10 FEB 1906 | 05 DEC 1995 | OBITUARY, BASTROP (LA) ENTERPRISE DTD 08 DEC 1995                   |
| 347 | DANIELS, LILLIE JONES        |            | 03 AUG 1909 | 21 APR 2000 | FUNERAL NOTICE, BASTROP (LA) ENTERPRISE DTD 27 APR 2000             |
| 23  | DANIELS, MOZELL              |            | 10 AUG 1900 | 04 JUN 1993 | MAMA. OBITUARY, BASTROP (LA) ENTERPRISE DTD 08 JUN 1993             |
| 53  | DAVENPORT, EARNEST           |            | 28 APR 1916 | 13 MAY 1988 | OBITUARY, BASTROP (LA) ENTERPRISE DTD 14 MAY 1988                   |
| 399 | DAVENPORT, LEE VALLEY        | MRS.       |             | 21 AUG 1990 | OBITUARY, BASTROP (LA) ENTERPRISE DTD 24 AUG 1990                   |
| 509 | DAVIS, EULUSE "SON"          |            |             | 24 FEB 1975 | OBITUARY, BASTROP (LA) ENTERPRISE DTD 27 FEB 1975                   |
| 65  | DAVIS, EVELL                 |            | 15 FEB 1894 | 13 OCT 1969 | DUO WITH ROSIE LEE DAVIS. VAULT.                                    |
| 247 | DAVIS, GOVIE                 | SR.        | 13 SEP 1903 | 27 OCT 1983 | OBITUARY, BASTROP (LA) ENTERPRISE DTD 31 OCT 1983                   |
| 333 | DAVIS, JESSIE IVORY          |            | 20 JAN 1888 | 12 JAN 1972 | FP: FATHER-FRANK DAVIS  |
| 334 | DAVIS, LAURA B.              | (MRS.)     |             | 01 MAY 1970 | FP: PARENTS-MR & MRS. MATTIE (MOORE) AND JIMMIE BROWN.              |
| 248 | DAVIS, LUCINDA J.            |            | 30 JAN 1907 | 16 MAR 2001 |   |
| 73  | DAVIS, NELLIE SEAY           |            | 16 SEP 1934 | 10 OCT 1983 | MOTHER. OBIT., BASTROP (LA) ENTERPRISE DTD 14 OCT 1983              |
| 66  | DAVIS, ROSIE LEE             |            | 06 NOV 1912 | 26 MAR 1970 | DUO WITH EVELL DAVIS  |
| 187 | DAVIS, VIRGINIA CAROL        |            | 19 DEC 1937 | 17 MAY 2003 | OBITUARY, BASTROP (LA) ENTERPRISE DTD 23 MAY 2003. FOOTNOTE # 5     |
| 11  | DAYS, LOTTIE (LEE)           |            | 23 DEC 1927 | 05 JUN 1994 | OBITUARY, BASTROP (LA) ENTERPRISE DTD 10 JUN 1994                   |
| 414 | DEVALL, MELVIN LEE           | SR.        |             | 14 JUN 1994 | OBITUARY, BASTROP (LA) ENTERPRISE DTD 23 JUN 1994                   |
| 132 | DEVOIL, JOSEPH LEE           |            | 03 MAR 1949 | 07 MAY 2001 | FUNERAL NOTICE, BASTROP (LA) ENTERPRISE DTD 11 MAY 2001             |
| 384 | DILLARD, MABLE               | MRS.       |             | 16 MAR 1981 | OBITUARY, BASTROP (LA) ENTERPRISE DTD 18 & 20 MAR 1981              |
| 249 | DOWLES, J. D.                |            | 11 AUG 1935 | 02 SEP 1990 | OBITUARY, BASTROP (LA) ENTERPRISE DTD 07 SEP 1990                   |
| 156 | DOWNNS, ELI "BUBER"          |            | 31 MAR 1914 | 13 FEB 1998 | DUO W/ MARY PAYTON DOWNNS; OBIT, BASTROP (LA) ENTERP., 20 FEB 1998  |
| 115 | DOWNNS, ARTHUR               |            | OCT 1841    | APR 1933    | PVT CO I 51 U S CLD INF   |
| 375 | DOWNNS, ELIZABETH (MORRISON) | MRS.       | 27 JAN 1927 | 09 FEB 1982 | OBITUARY, BASTROP (LA) ENTERPRISE DTD 12 FEB 1982                   |
| 121 | DOWNNS, FANNIE BELL          |            | 05 MAR 1939 | 16 OCT 2002 | FP: PARENTS-MR. & MRS. MAGNOLIA AND JIMMY WILLIAMS                  |
| 174 | DOWNNS, J. S.                |            | 29 JUL 1939 | 18 APR 1968 |   |
| 175 | DOWNNS, JOHN EDWARDS         |            | 23 NOV 1945 | 18 APR 1968 |   |
| 373 | DOWNNS, JOHNNY               |            |             | 13 MAY 1979 | OBITUARY, BASTROP (LA) ENTERPRISE DTD 19 MAY 1979                   |
| 157 | DOWNNS, MARY PAYTON          |            | 16 JUN 1913 | 28 JAN 1994 | DUO W/ ELI "BUBER" DOWNNS. OBIT., BASTROP (LA) ENTERP., 31 JAN 1994 |
| 461 | DOWNNS, TILLMAN              | JR.        | 01 NOV 1950 | 07 AUG 1988 | OBITUARY, BASTROP (LA) ENTERPRISE DTD 13 AUG 1988                   |

JERUSALEM MISSIONARY BAPTIST CHURCH CEMETERY

THE GENIE Second Quarter 2010

77

| ID  | NAME (Last, First, Name)       | PRE/SUFFIX | BIRTHDATE   | DEATHDATE   | INSCRIPTION/NOTES  |
|-----|--------------------------------|------------|-------------|-------------|--|
| 257 | DUDLEY, ELIZABETH ROBINSON     |            | 10 JAN 1903 | 20 FEB 1986 | OBITUARY, BASTROP (LA) ENTERPRISE DTD 22 FEB 1986            |
| 396 | DUFFIE, LOUIS                  |            |             | 12 MAY 1995 | OBITUARY, BASTROP (LA) ENTERPRISE DTD 17 MAY 1995            |
| 40  | DUNCAN, ELBERT                 |            | 15 MAY 1910 | 27 JUN 1986 | PVT U S ARMY WORLD WAR II                                    |
| 36  | DUNCAN, ZOLA J.                |            | 01 MAR 1887 | 24 NOV 1979 | OBITUARY, BASTROP (LA) ENTERPRISE DTD 30 NOV 1979            |
| 321 | ESTES, JAMES                   |            | 12 SEP 1912 | 10 MAR 1972 |  |
| 238 | EVANS, ARIZONA K.              |            | 18 AUG 1908 | 03 DEC 1998 | OBITUARY, BASTROP (LA) ENTERPRISE DTD 07 DEC 1998            |
| 423 | EVANS, ROBERT                  |            |             | MAR 2004    | FUNERAL NOTICE, BASTROP (LA) ENTERPRISE DTD 19 MAR 2004      |
| 335 | EWINGS, ISIDEE                 | (MRS.)     |             | 25 MAR 1975 | FP: PARENTS-MR.& MRS. MATTIE (MOORE) AND JIMMIE BROWN        |
| 111 | FLEMMINGS, FLORA JEAN          |            | 25 AUG 1928 | 16 MAR 2002 | FUNERAL NOTICE, BASTROP (LA) ENTERPRISE DTD 20 MAR 2002      |
| 46  | FLOWERS, LEROY                 |            | 10 MAY 1914 | 02 FEB 1989 |  |
| 47  | FLOWERS, MABLE (LEE)           |            | 23 APR 1919 | 29 JAN 1991 | OBITUARY, BASTROP (LA) ENTERPRISE DTD 01 FEB 1991            |
| 252 | FRAZIES, EDWARD                |            | 05 APR 1917 | 18 NOV 1978 |  |
| 255 | FREEMAN, HATTIE                |            | 02 NOV 1898 | 08 MAR 1973 |  |
| 178 | GASTOR, PATRICIA A. SAWYER     |            | 15 SEP 1950 | 20 AUG 1980 |  |
| 58  | GAUTHIER, EDWARD               |            | 12 MAY 1971 | 12 MAY 1971 |  |
| 234 | GEE, EUGENE                    |            | 1885        | 1957        |  |
| 9   | GERMAN, AMES                   |            | 1917        | 2000        | VAULT  |
| 8   | GERMAN, ETHEL P.               |            | 25 DEC 1914 | 16 APR 1992 | OBITUARY, BASTROP (LA) ENTERPRISE DTD 23 APR 1992            |
| 463 | GERMAN, JAMES FOX              |            |             | MAR 2000    | FUNERAL NOTICE, BASTROP (LA) ENTERPRISE DTD 23 & 24 MAR 2000 |
| 393 | GERMAN, MAGGIE                 | MRS.       |             | 27 APR 1990 | OBITUARY, BASTROP (LA) ENTERPRISE DTD 02 MAY 1990            |
| 387 | GERMAN, NORA                   |            |             | OCT 1981    | OBITUARY, BASTROP (LA) ENTERPRISE DTD 29 OCT 1981            |
| 473 | GILBERT, WILLIE LEE            |            |             | APR 1986    | OBITUARY, BASTROP (LA) ENTERPRISE DTD 15 APR 1986            |
| 166 | GIRTMON, PEARLIE B.            |            | 10 AUG 1913 | 21 FEB 1969 | OUR BELOVED MOTHER   |
| 390 | GOODSEN, BEN                   |            |             | 16 APR 1983 | OBITUARY, BASTROP (LA) ENTERPRISE DTD 22 APR 1983            |
| 502 | GORDON, SYLVIA                 |            |             | 12 APR 2009 | FUNERAL NOTICE, NEWS-STAR (MONROE, LA) DTD 16 APR 2009       |
| 88  | GRANT, ANNIE MAE               | MRS.       | 1902        | 01 JUN 1984 | VAULT. OBITUARY, BASTROP (LA) ENTERPRISE DTD 06 JUN 1984     |
| 429 | GRANT, JAMES LOUIS             |            |             | 25 FEB 1991 | OBITUARY, BASTROP (LA) ENTERPRISE DTD 04 MAR 1991            |
| 478 | GRANT, MARTHA LEE "BIG MOMMA"  |            | 13 JUN 1933 | 03 APR 2008 | OBIT. & MC, BASTROP (LA) ENTERP. DTD 10 APR, 13 JUN 2008     |
| 103 | GRANT, RONALD C. (CHRISTOPHER) |            | 1973        | 1996        | FUNERAL NOTICE, BASTROP (LA) ENTERPRISE DTD 22 APR 1996      |
| 94  | GREEN, ALFRED                  |            | 22 AUG 1905 | 31 JUL 1972 | FP: PARENTS-MR. & MRS. LEAH AND WILLIE GREEN                 |
| 96  | GREEN, ALFRED                  | JR.        | 12 FEB 1945 | 01 OCT 1999 | OBITUARY, BASTROP (LA) ENTERPRISE DTD 07 OCT 1999            |
| 84  | GREEN, CHARLOTTE CHANTEL       |            | 28 JUN 1974 | 17 JUL 2001 | DAUGHTER. OBITUARY, BASTROP (LA) ENTERPRISE DTD 19 JUL 2001. |
| 497 | GREEN, CURT                    |            | 02 FEB 1988 | 22 MAY 2008 | FP: PARENTS-FELISHA LIMUEL AND ERIC TAYLOR                   |
| 81  | GREEN, DAVID                   |            | 23 AUG 1902 | 28 AUG 1960 |  |



JERUSALEM MISSIONARY BAPTIST CHURCH CEMETERY

| ID  | NAME (Last, First, Name)         | PRE/SUFFIX | BIRTHDATE   | DEATHDATE   | INSCRIPTION/NOTES  |
|-----|----------------------------------|------------|-------------|-------------|--|
| 100 | GREEN, DAVID D. (DWAYNE) "DAVE"  |            | 05 SEP 1956 | 17 APR 1992 | OBITUARY, BASTROP (LA) ENTERPRISE DTD 23 APR 1992                |
| 98  | GREEN, DOMINIQUE TREYMAINE       |            | 24 AUG 1979 | 22 APR 2000 | BELOVED SON AND BROTHER  |
| 95  | GREEN, EVA MAE                   |            | 03 SEP 1914 | 03 NOV 1995 | MOTHER. OBITUARY, BASTROP (LA) ENTERPRISE DTD 09 NOV 1995        |
| 484 | GREEN, FELISHA LIMUEL            | SISTER     |             | 2002        | OBITUARY, BASTROP (LA) ENTERPRISE DTD 10 OCT 2002                |
| 78  | GREEN, FREDDIE L.                |            | 09 SEP 1949 | 17 SEP 1992 | VAULT  |
| 82  | GREEN, JOHNNY                    |            | 23 APR 1915 | 18 DEC 1959 |  |
| 79  | GREEN, LESTER                    |            | 28 MAR 1947 | 02 JAN 1989 | BROTHER. OBITUARY, BASTROP (LA) ENTERPRISE DTD 06 JAN 1989       |
| 93  | GREEN, WESLEY                    |            | 01 AUG 1904 | 29 MAR 1989 | FUNERAL NOTICE, BASTROP (LA) ENTERPRISE DTD 03 APR 1989          |
| 195 | HARGROVE, GRACIE CHAFFOLD        |            | 13 SEP 1926 | 12 JAN 2002 | FP: PARS-MINNIE VICTORIA WASHINGTON & EUGENE CHAFFOLD            |
| 291 | HARRIS, ANTHONY PEREZ            |            | 27 APR 1971 | 26 MAY 1973 |  |
| 292 | HARRIS, BERNICE                  | MRS.       | 14 SEP 1911 | 07 FEB 1989 | OBITUARY, BASTROP (LA) ENTERPRISE DTD 10 FEB 1989                |
| 498 | HARRIS, BEVERLY CLARENCE         | BROTHER.   | 09 DEC 1947 | 04 JUN 2008 | FP: PARENTS-M/M KATIE MAE (BRYANT) AND ISOM HARRIS               |
| 312 | HARRIS, BOBBY                    |            | 10 NOV 1961 | 15 MAY 1989 | OBITUARY, BASTROP (LA) ENTERPRISE DTD 19 MAY 1989                |
| 20  | HARRIS, CORDELIA DUNKLIN         |            | 03 APR 1901 | 22 APR 1978 | WIFE. OBITUARY, BASTROP (LA) ENTERPRISE DTD 26 APR 1978          |
| 289 | HARRIS, CURTIS H.                |            | 24 APR 1948 | 15 NOV 1948 |  |
| 21  | HARRIS, IVEY JAMES               | SR.        | 23 AUG 1896 | 29 OCT 1971 | FP: PARENTS-MR. & MRS. CALLIE (REED) AND RICHARD HARRIS          |
| 290 | HARRIS, LOVE                     |            | 07 NOV 1902 | 21 JAN 1951 |  |
| 487 | HARRIS, MANDY                    |            | 10 MAR 1905 | 04 JUN 2008 | OBITUARY, BASTROP (LA) ENTERPRISE DTD 9 JUN 2008                 |
| 26  | HAYNES, CALDONIA TAYLOR          |            | 23 FEB 1940 | 08 MAR 1983 | MOTHER. OBITUARY, BASTROP (LA) ENTERPRISE DTD 11 MAR 1983        |
| 419 | HENDERSON, JESSIE LEE            |            |             | 20 FEB 2007 | FUNERAL NOTICE, BASTROP (LA) ENTERPRISE DTD 24 FEB 2007          |
| 15  | HIGGINBOTHAM, CLEZE              |            | 27 AUG 1923 | 12 JAN 1965 | PFC U S ARMY W W II. OBIT., BASTROP (LA) ENTERP. DTD 18 JAN 1995 |
| 452 | HIGGINBOTTOM, SHIRLEY A.         | MRS.       |             | 09 APR 1987 | OBITUARY, BASTROP (LA) ENTERPRISE DTD 16 APR 1987                |
| 481 | HILL, JACQUELINE D.              | MISS       |             | 25 AUG 1989 | OBITUARY, BASTROP (LA) ENTERPRISE DTD 30 AUG 1989                |
| 379 | HILTON, GEORGE                   |            |             | 20 DEC 1981 | OBITUARY, BASTROP (LA) ENTERPRISE DTD 24 DEC 1981                |
| 39  | HOLLINS, IRMA                    |            | 09 AUG 1895 | 05 DEC 1983 |  |
| 483 | HOLLINS, WILLIAM                 | SR.        |             | 22 APR 1989 | OBITUARY, BASTROP (LA) ENTERPRISE DTD 27 APR 1989                |
| 425 | HOLLIS, CARL                     |            |             | APR 2008    | FUNERAL NOTICE, NEWS-STAR (MONROE, LA) DTD 01 MAY 2008           |
| 161 | HOWARD, SUSIE ROBINSON           |            | 15 AUG 1876 | 02 APR 1950 |  |
| 138 | HUBBARD, BOBBIE (JEAN) WHITE     |            | 28 JUN 1943 | 18 AUG 1993 | MOTHER. OBIT., BASTROP (LA) ENTERPRISE DTD 20 AUG 1993           |
| 348 | HUBBARD, GABE                    |            | 05 MAY 1905 | 07 DEC 2007 | FUNERAL NOTICE, BASTROP (LA) ENTERPRISE DTD 12 DEC 2007          |
| 137 | HUBBARD, LITTLE JONEKA SHUNTA    |            | 13 JUL 1985 | 12 FEB 1995 | DAUGHTER. OBIT., BASTROP (LA) ENTERPRISE DTD 16 FEB 1995         |
| 125 | HUBBARD, MARY L.                 |            | 05 SEP 1952 | 10 MAY 2004 | FUNERAL NOTICE, BASTROP (LA) ENTERPRISE DTD 21 MAY 2004          |
| 126 | HUBBARD, MATTIE LEE (DEJOHNETTE) |            | 17 DEC 1909 | 17 MAY 1998 | OBITUARY, BASTROP (LA) ENTERPRISE DTD 22 MAY 1998                |
| 400 | HUBBARD, WILLIE LEE              |            |             | 15 JUN 1990 | OBITUARY, BASTROP (LA) ENTERPRISE DTD 19 JUN 1990                |

JERUSALEM MISSIONARY BAPTIST CHURCH CEMETERY

THE GENIE Second Quarter 2010

79

| ID  | NAME (Last, First, Name)        | PRE/SUFFIX | BIRTHDATE   | DEATHDATE   | INSCRIPTION/NOTES   |
|-----|---------------------------------|------------|-------------|-------------|---|
| 50  | HUDSON, URAL ?                  |            | 04 AUG 1909 | 27 MAY 1961 | BEST GUESS AT FIRST NAME                                  |
| 29  | HUNDLEY, PENELLIE (PERNELLA)    |            | 06 OCT 1901 | 08 DEC 1978 | OBITUARY, BASTROP (LA) ENTERPRISE DTD 13 DEC 1978         |
| 233 | IRVIN, LEBERTHA                 |            | 22 JAN 1908 | 14 DEC 2003 | OBITUARY, BASTROP (LA) ENTERPRISE DTD 19 DEC 2003         |
| 99  | JACKSON, CHARLIE                |            | 27 AUG 1928 | 16 JAN 2000 | FOOTSTONE: DADDY  |
| 336 | JACKSON, L. C. GRIFFIN          | MRS.       | 02 NOV 1910 | 11 MAR 1997 | FP: PARENTS-REV. & MRS. MARTHA GRIFFIN                    |
| 189 | JACKSON, LOUELLA                |            | 21 JAN 1920 | 12 FEB 2005 | LITTLE MAMA. OBIT., BASTROP (LA) ENTERP. DTD 17 FEB 2005  |
| 97  | JACKSON, MAGGIE DELORIS (GREEN) |            | 04 JUL 1952 | 02 NOV 2004 | FUNERAL NOTICE, BASTROP (LA) ENTERPRISE DTD 05 NOV 2004   |
| 154 | JACKSON, PHYLLIS RENEA          |            | 05 MAY 1959 | 16 DEC 2003 | FP: PARENTS-M/M GEORGIA (SEAY) AND LEON JACKSON           |
| 32  | JACKSON, REE                    |            | 25 DEC 1894 | 07 APR 1979 |   |
| 34  | JACKSON, SOLOMON                |            | 08 AUG 1922 | 23 JAN 1993 | OBITUARY, BASTROP (LA) ENTERPRISE DTD 29 JAN 1993         |
| 33  | JACKSON, SUSIE E.               |            | 25 APR 1894 | 08 MAY 1986 | OBITUARY, BASTROP (LA) ENTERPRISE DTD 10 MAY 1986         |
| 42  | JAMES, MYRTLE                   |            | 03 SEP 1921 | 10 NOV 2003 |   |
| 214 | JAMESY, FLO                     |            | NONE        | NONE        |   |
| 228 | JEFFERSON, CHAMP                | JR.        | 14 MAR 1929 | 09 JAN 1969 |   |
| 235 | JEFFERSON, ODDIE LEE            |            | 11 MAY 1908 | 24 FEB 1991 | OBITUARY, BASTROP (LA) ENTERPRISE DTD 01 MAR 1991         |
| 135 | JENKINS, DON EARL               |            | 08 JUN 1954 | 18 AUG 1990 | OBITUARY, BASTROP (LA) ENTERPRISE DTD 24 AUG 1980         |
| 256 | JENKINS, FELICIA MARIE          |            | 1973        | 07 FEB 1996 | FP: PARS-M/M CATHY ROBINSON COLEMAN & LARRY D. NICKS      |
| 231 | JENKINS, MAGNOLIA               |            | 20 SEP 1904 | 12 SEP 1987 | MOTHER OBIT., BASTROP (LA) ENTERPRISE DTD 18 SEP 1987     |
| 485 | JOHNSON, ANNIE LUCILLE          |            |             | 06 FEB 1987 | OBITUARY, BASTROP (LA) ENTERPRISE DTD 10 FEB 1987         |
| 51  | JOHNSON, CHARLIE                |            | 1901        | 1967        | AGE 66. FATHER  |
| 318 | JOHNSON, CHARLIE                | SR.        | 12 MAY 1932 | 17 FEB 1997 | FATHER. OBIT., BASTROP (LA) ENTERPRISE DTD 18 FEB 1997    |
| 415 | JOHNSON, CURTIS RAY             |            |             | 15 NOV 1994 | OBITUARY, BASTROP (LA) ENTERPRISE DTD 18 NOV 1994         |
| 405 | JOHNSON, DELORIS                |            |             | 28 MAY 1994 | OBITUARY, BASTROP (LA) ENTERPRISE DTD 03 JUN 1994         |
| 381 | JOHNSON, DENNIS                 |            |             | JAN 1983    | OBITUARY, BASTROP (LA) ENTERPRISE DTD 21 JAN 1983         |
| 503 | JOHNSON, FLOYD                  |            |             | 05 NOV 1974 | OBITUARY, BASTROP (LA) ENTERPRISE DTD 07 NOV 1974         |
| 2   | JOHNSON, GENEVA W. (WILLIAMS)   |            | 11 MAY 1926 | 24 OCT 1987 | OBITUARY, BASTROP (LA) ENTERPRISE DTD 30 OCT 1987         |
| 136 | JOHNSON, GLADYS (JENKINS)       |            | 1953        | 2003        | VAULT. OBITUARY, BASTROP (LA) ENTERPRISE DTD 25 JUL 2003. |
| 30  | JOHNSON, LEE                    |            | 23 DEC 1904 | 28 OCT 1978 | OBITUARY, BASTROP (LA) ENTERPRISE DTD 01 NOV 1978         |
| 465 | JOHNSON, LUCINDA DAVIS          |            |             | MAR 2001    | FUNERAL NOTICE, BASTROP (LA) ENTERPRISE DTD 21 MAR 2001   |
| 432 | JOHNSON, M. C.                  |            |             | AUG 1991    | OBITUARY, BASTROP (LA) ENTERPRISE DTD 06 AUG 1991         |
| 31  | JOHNSON, MATTIE SEAY            |            | 01 JAN 1911 | 11 APR 1999 | OBITUARY, BASTROP (LA) ENTERPRISE DTD 15 APR 1999         |
| 403 | JOHNSON, MINION                 |            |             | OCT 2005    | FUNERAL NOTICE, BASTROP (LA) ENTERPRISE DTD 28 OCT 2005   |
| 349 | JOHNSON, MYRTLE                 |            | 1952        | 2008        | OBITUARY, BASTROP (LA) ENTERPRISE DTD 21 FEB 2008         |
| 1   | JOHNSON, NEMI                   |            | 14 JAN 1914 | 25 MAY 1985 | OBITUARY, BASTROP (LA) ENTERPRISE DTD 31 MAY 1995         |

JERUSALEM MISSIONARY BAPTIST CHURCH CEMETERY

THE GENIE Second Quarter 2010

80

| ID  | NAME (Last, First, Name)  | PRE/SUFFIX | BIRTHDATE   | DEATHDATE   | INSCRIPTION/NOTES  |
|-----|---------------------------|------------|-------------|-------------|--|
| 407 | JOHNSON, RAYMOND          |            | 01 JUN 1915 | 23 MAY 1991 | OBITUARY, BASTROP (LA) ENTERPRISE DTD 30 MAY 1991                |
| 391 | JOHNSON, SUSIE            |            | 06 MAY 917  | 24 NOV 1993 | OBITUARY, BASTROP (LA) ENTERPRISE DTD 02 DEC 1993                |
| 510 | JOHNSON, WILLIE           | MRS.       |             | 07 APR 1975 | OBITUARY, BASTROP (LA) ENTERPRISE DTD 11 APR 1975                |
| 469 | JONES, C. B.              |            |             | 30 JAN 1988 | OBITUARY, BASTROP (LA) ENTERPRISE DTD 04 FEB 1988                |
| 367 | JONES, CAREY              |            |             | 30 NOV 1983 | OBITUARY, BASTROP (LA) ENTERPRISE DTD 02 DEC 1983                |
| 277 | JONES, CHARLES EDWARD     |            | 02 SEP 1958 | 02 NOV 1990 | BROTHER. OBIT., BASTROP (LA) ENTERP. DTD 08 NOV 1990             |
| 394 | JONES, DALTON             |            |             | MAY 1993    | OBITUARY, BASTROP (LA) ENTERPRISE DTD 07 MAY 1993                |
| 276 | JONES, DAVID EARL         |            | 21 MAY 1961 | 30 DEC 1998 | BROTHER. OBIT., BASTROP (LA) ENTERP. DTD 07 JAN 1999             |
| 48  | JONES, DESSIE E. MITCHELL |            | 22 MAR 1932 | 04 MAY 2002 | FUNERAL NOTICE, BASTROP (LA) ENTERPRISE DTD 09 MAY 2002          |
| 49  | JONES, EMMA               |            | 02 DEC 1960 | 26 OCT 2002 | AGE 43. FHM  |
| 44  | JONES, FRANK JAMES        |            | 01 JUN 1959 | 18 AUG 1989 | OBITUARY, BASTROP (LA) ENTERPRISE DTD 25 AUG 1989                |
| 278 | JONES, IDELL WILLIAMS     |            | 08 OCT 1936 | 12 APR 1988 | MOTHER. OBIT., BASTROP (LA) ENTERP. DTD 14 APR 1988              |
| 215 | JONES, JAMES              |            | 1898        | 06 JUL 1970 |  |
| 41  | JONES, JEFF               | JR.        | 08 OCT 1916 | 16 JAN 1988 | TEC 5 U S ARMY WORLD WAR II. OBIT., BASTROP ENTERP., 21 JAN 1988 |
| 437 | JONES, LEE GUSSIE         | MRS.       |             | JUL 1997    | OBITUARY, BASTROP (LA) ENTERPRISE DTD 24 JUL 1997                |
| 449 | JONES, LULA MORGAN        |            |             | 08 JAN 2009 | FUNERAL NOTICE, NEWS-STAR (MONROE, LA) DTD 17 JAN 2009           |
| 417 | JONES, MARY B.            | MRS.       |             | 09 MAR 1992 | OBITUARY, BASTROP (LA) ENTERPRISE DTD 13 MAR 1992                |
| 190 | JONES, MARY LOUISE        |            | 06 JUN 1955 | 15 OCT 1992 |  |
| 495 | JONES, MERRY              |            |             | 26 FEB 2000 | OBITUARY, NEWS-STAR (MONROE, LA) DTD 29 FEB 2000                 |
| 360 | JONES, ROOSEVELT "DUDE"   |            |             | JUN 1981    | OBITUARY, BASTROP (LA) ENTERPRISE DTD 12 JUN 1981                |
| 22  | JONES, SHELLIE MAE        |            | 10 OCT 1914 | 27 MAR 1997 | OBITUARY, BASTROP (LA) ENTERPRISE DTD 31 MAR 1997                |
| 24  | JONES, SHERRIE A.         |            | 30 JAN 1956 | 24 APR 1990 |  |
| 227 | KING, ALPHA               |            | 23 JUN 1905 | 24 APR 1957 |  |
| 77  | KING, DONNIE LUSTER       |            | 14 MAY 1945 | 03 JUL 1969 | LOUISIANA PFC CO D 5 MAR 1 MAR DIV VIETNAM                       |
| 440 | KING, EMMA                |            |             | 07 FEB 1989 | OBITUARY, BASTROP (LA) ENTERPRISE DTD 15 FEB 1989                |
| 455 | KING, GEORGE A.           |            |             | 20 NOV 1998 | OBITUARY, BASTROP (LA) ENTERPRISE DTD 25 NOV 1998                |
| 411 | KING, GUSSIE KEYS         | MRS.       |             | 23 APR 1992 | OBITUARY, BASTROP (LA) ENTERPRISE DTD 24 APR 1992                |
| 342 | KING, JOHNNIE             |            | 25 FEB 1925 | 04 JAN 2007 | FP: PARENTS-PENELLIA HUNDLY AND FILESS KING                      |
| 76  | KING, N. L.               |            | 07 SEP 1906 | 23 OCT 1961 |  |
| 409 | KING, PHYLLUS "BUDDY"     |            |             | 12 MAY 1992 | OBITUARY, BASTROP (LA) ENTERPRISE DTD 14 MAY 1992                |
| 457 | KING, QUINCY              | MS.        |             | 04 APR 1998 | OBITUARY, BASTROP (LA) ENTERPRISE DTD 08 APR 1998                |
| 431 | KING, TAZZ                |            |             | 12 SEP 1991 | OBITUARY, BASTROP (LA) ENTERPRISE DTD 17 SEP 1991                |
| 480 | KING, THOMAS              |            |             | 09 JAN 1998 | OBITUARY, BASTROP (LA) ENTERPRISE DTD 15 JAN 1998                |
| 467 | LANIER, FLORENCE JOHNSON  |            |             | 11 JUN 1986 | OBITUARY, BASTROP (LA) ENTERPRISE DTD 14 JUN 1986                |

JERUSALEM MISSIONARY BAPTIST CHURCH CEMETERY

| ID  | NAME (Last, First, Name)         | PRE/SUFFIX | BIRTHDATE   | DEATHDATE   | INSCRIPTION/NOTES   |
|-----|----------------------------------|------------|-------------|-------------|---|
| 55  | LANIER, HAYWOOD                  |            | 15 FEB 1890 | 26 SEP 1965 | LOUISIANA CPL CO C 328 LABOR BN QMC WORLD WAR I             |
| 433 | LANIER, RUBY                     | MRS.       |             | 17 FEB 1989 | OBITUARY, BASTROP (LA) ENTERPRISE DTD 20 FEB 1989           |
| 14  | LAVALL, WILLIE MAE               |            | 23 DEC 1940 | 15 AUG 1996 | MOTHER. OBIT., BASTROP (LA) ENTERPRISE DTD 20 AUG 1996      |
| 434 | LEE, CLARA BELL                  | MRS.       |             | 03 AUG 1988 | OBITUARY, BASTROP (LA) ENTERPRISE DTD 05 AUG 1988           |
| 363 | LEE, LULA B.                     | MRS.       |             | 27 SEP 1976 | OBITUARY, BASTROP (LA) ENTERPRISE DTD 30 SEP 1976           |
| 254 | LEWIS, EULES                     | BRO.       | 1900        | 1973        | ASSISTANT AND HUSBAND OF REV. VIOLET LEWIS                  |
| 253 | LEWIS, VIOLET                    | REV.       | 02 MAY 1896 | 26 SEP 1973 | FDR & BLDR OF CHURCHES IN LA & ARK. SEE FOOTNOTE NO. 6.     |
| 85  | LIMUEL, FELISHA GREEN            |            | 05 AUG 1969 | 07 OCT 2002 | IN LOVING MEMORY OF OUR MOTHER                              |
| 269 | LINEAR, ALEX "DICK"              | SR.        | 11 NOV 1913 | 11 JAN 2002 | DUO WITH MINNIE IRMA LINEAR. SEE FOOTNOTE NO. 7             |
| 270 | LINEAR, MINNIE IRMA              |            | 19 AUG 1918 | BLANK       | DUO WITH ALEX "DICK" LINEAR, SR. CHILDREN IN FOOTNOTE NO. 7 |
| 54  | LINNEAR, MANDY                   |            | 1886        | 1948        |   |
| 426 | LOVE, DAISY                      | MRS.       |             | 27 JUL 1995 | OBITUARY, BASTROP (LA) ENTERPRISE DTD 31 JUL 1995           |
| 380 | MACK, BERTHA                     | MRS.       |             | 05 OCT 1985 | OBITUARY, BASTROP (LA) ENTERPRISE DTD 10 OCT 1985           |
| 124 | MATTHEWS, MATTIE                 |            | 1896        | 1987        | VAULT   |
| 309 | MAYS, EMILY DUNCAN               |            | 08 DEC 1888 | 08 JUN 1977 |   |
| 313 | MCDONALD, WILLIE                 |            | 01 JAN 1910 | 09 JUL 1984 | PFC U S ARMY WORLD WAR II                                   |
| 401 | MCGEE, FRANKIE                   |            |             | 16 MAY 1995 | OBITUARY, BASTROP (LA) ENTERPRISE DTD 18 MAY 1995           |
| 212 | MCWOODSON, CLAIBORNE B.          |            | 1894        | 19 FEB 1988 | OBITUARY, BASTROP (LA) ENTERPRISE DTD 24 FEB 1988           |
| 213 | MCWOODSON, HESTER BROWN          |            | 03 JUN 1894 | 11 FEB 1986 | OBITUARY, BASTROP (LA) ENTERPRISE DTD 14 FEB 1986           |
| 350 | MELTON, MARY LEE CHAPMAN         |            | 15 FEB 1924 | 28 FEB 1995 | OBITUARY, BASTROP (LA) ENTERPRISE DTD 03 MAR 1995           |
| 325 | MINNIEWEATHER, BESSIE            |            | 02 APR 1914 | 06 APR 1997 | OBITUARY, BASTROP (LA) ENTERPRISE DTD 09 APR 1997           |
| 326 | MINNIEWEATHER, MIKE (ARTHUR)     |            | 13 JUL 1946 | 22 MAR 1981 | FP: PARENTS-MR. & MRS. RUFUS MINNIEWEATHER                  |
| 422 | MINNIEWEATHER, RUFUS             | SR.        |             | MAR 2005    | FUNERAL NOTICE, BASTROP (LA) ENTERPRISE DTD 08 MAR 2005     |
| 225 | MITCHELL, DAVID                  |            | 10 APR 1891 | 10 AUG 1951 |   |
| 226 | MITCHELL, JOSHUA C. (CALEB) "JC" |            | 03 MAR 1909 | 28 DEC 1989 | OBITUARY, BASTROP (LA) ENTERPRISE DTD 29 DEC 1989           |
| 477 | MITCHELL, MABLE                  | MRS.       |             | 26 MAY 1989 | OBITUARY, BASTROP (LA) ENTERPRISE DTD 31 MAR 1989           |
| 436 | MITCHELL, MARY ANN               | MRS.       |             | 04 AUG 1988 | OBITUARY, BASTROP (LA) ENTERPRISE DTD 09 & 10 AUG 1988      |
| 221 | MOORE, AARON                     |            | 18 MAY 1911 | 29 NOV 1992 | OBITUARY, BASTROP (LA) ENTERPRISE DTD 04 DEC 1992           |
| 296 | MOORE, BOWMAN                    |            | 29 AUG 1907 | 14 JUL 1982 |   |
| 315 | MOORE, CATHERINE                 |            | MAY 1931    | MAY 2003    | FUNERAL NOTICE, BASTROP (LA) ENTERPRISE DTD 09 MAY 2003     |
| 251 | MOORE, ETTA JOHNSON              |            | 14 MAY 1900 | 09 JUL 1984 | MOTHER. OBIT., BASTROP (LA) ENTERPRISE DTD 13 JUL 1984      |
| 308 | MOORE, FRANKIE JEAN              |            | 11 JUN 1970 | 30 APR 2006 | FP: PARENTS-MR. & MRS. LIZZIE (BRANDON) & FRANK WILLIAMS    |
| 299 | MOORE, ISAIAH                    |            | 18 MAR 1920 | 27 MAR 1978 | OBITUARY, BASTROP (LA) ENTERPRISE DTD 29 MAY 1978           |
| 18  | MOORE, MABLE LEE                 |            | 22 MAR 1928 | 26 MAY 2007 | OBITUARY, BASTROP (LA) ENTERPRISE DTD 31 MAR 2007           |

JERUSALEM MISSIONARY BAPTIST CHURCH CEMETERY

| ID  | NAME (Last, First, Name)    | PRE/SUFFIX | BIRTHDATE   | DEATHDATE   | INSCRIPTION/NOTES   |
|-----|-----------------------------|------------|-------------|-------------|---|
| 70  | MOORE, MAGNOLIA "MAG"       |            | 19 MAY 1935 | 12 JAN 2000 | OBITUARY, BASTROP (LA) ENTERPRISE DTD 17 JAN 2000                 |
| 297 | MOORE, MATTIE               |            | 17 FEB 1909 | 06 SEP 1986 |   |
| 298 | MOORE, MYRTLE LEE           |            | 25 APR 1926 | 20 JUL 2002 | FUNERAL NOTICE, BASTROP (LA) ENTERPRISE DTD 24 JUL 2002           |
| 392 | MOORE, WILLIE EARL          |            |             | 1993        | OBITUARY, BASTROP (LA) ENTERPRISE DTD 17 DEC 1993                 |
| 304 | MORGAN, BENNIE E.           | DEACON     | 05 MAR 1929 | 27 MAR 2001 | FUNERAL NOTICE, BASTROP (LA) ENTERPRISE DTD 29 MAR 2001           |
| 300 | MORGAN, ELDR A              | JR.        | 27 JUN 1950 | 17 OCT 1987 | OBITUARY, BASTROP (LA) ENTERPRISE DTD 27 OCT 1987                 |
| 512 | MORGAN, JEFF                |            |             | 22 APR 1974 | OBITUARY, BASTROP (LA) ENTERPRISE DTD 24 APR 1974                 |
| 301 | MORGAN, JERLEAN J.          |            | 16 AUG 1928 | 22 OCT 1952 |   |
| 310 | MORGAN, JOSANNER            |            | 12 FEB 1938 | 11 JUN 1974 | "BABY JOE"  |
| 311 | MORGAN, QUINON E.           |            | 30 OCT 1951 | 24 FEB 1989 | OBITUARY, BASTROP (LA) ENTERPRISE DTD 01 MAR 1989                 |
| 28  | MORRISON, EMMA C.           |            | 07 NOV 1900 | 28 JUL 1978 | FUNERAL NOTICE, BASTROP (LA) ENTERPRISE DTD 31 JUL 1978           |
| 134 | MORRISON, EVELYN            | MRS.       | 12 DEC 1923 | 28 MAR 2001 | FHM. FP: PARENTS-MR. & MRS. ELLA AND WILLIAM RANDLE               |
| 445 | MORRISON, GERTRUDE          | MRS.       |             | 08 JAN 1997 | OBITUARY, BASTROP (LA) ENTERPRISE DTD 09 JAN 1997                 |
| 447 | MORRISON, GLADYS            | MRS.       |             | 07 JUL 1997 | OBITUARY, BASTROP (LA) ENTERPRISE DTD 10 JUL 1997                 |
| 71  | MORRISON, KATHERINE DENISE  | MS.        | 01 JUN 1965 | 10 JUL 1998 | OBITUARY, BASTROP (LA) ENTERPRISE DTD 16 JUL 1998                 |
| 460 | MORRISON, MONROE            |            |             | 20 JUN 1985 | OBITUARY, BASTROP (LA) ENTERPRISE DTD 25 JUN 1985                 |
| 131 | MORRISON, O. D.             |            | 03 AUG 1924 | 10 JUN 2006 |   |
| 173 | MORRISON, PHILLIP           |            | 23 FEB 1924 | 02 MAY 2003 | PVT U S ARMY W W II. ITEM, BASTROP (LA) ENTERP., 01 & 02 MAY 2003 |
| 511 | MORRISON, REBECCA           | MRS.       |             | 10 APR 1974 | OBITUARY, BASTROP (LA) ENTERPRISE DTD 15 APR 1974                 |
| 424 | MORRISON, SHATERRA RASHAE   | INFANT     |             | 17 MAR 1991 | OBITUARY, BASTROP (LA) ENTERPRISE DTD 19 MAR 1991                 |
| 421 | MORRISON, THOMAS "TOM"      |            |             | JAN 1993    | FUNERAL NOTICE, BASTROP (LA) ENTERPRISE DTD 22 JAN 1993           |
| 456 | MORRISON, W. C.             |            |             | 19 DEC 1988 | OBITUARY, BASTROP (LA) ENTERPRISE DTD 23 DEC 1988                 |
| 271 | MOSES, HENRIETTA            |            | 28 JAN 1904 | 18 FEB 1999 | OBITUARY, BASTROP (LA) ENTERPRISE DTD 19 FEB 1999                 |
| 376 | MULLEN, AVEL                |            |             | 23 MAR 1982 | OBITUARY, BASTROP (LA) ENTERPRISE DTD 26 MAR 1982                 |
| 4   | MULLENS, OCCIE              |            | NONE        | 02 OCT 2005 | FUNERAL NOTICE, BASTROP (LA) ENTERPRISE DTD 06 OCT 2005           |
| 264 | NEAL, FRED L. (LEE)         | REV.       | 01 MAY 1910 | 24 JAN 1992 | OBITUARY, BASTROP (LA) ENTERPRISE DTD 28 JAN 1992                 |
| 261 | NEAL, MARY E. (ELIZIAH)     | MRS.       | 01 MAY 1908 | 12 SEP 2001 | FP: PARENTS-M/M MIRIAH AND CHARLIE NEAL                           |
| 263 | NEAL, ROSE                  | SISTER     | 01 SEP 1902 | 07 NOV 1984 | OBITUARY, BASTROP (LA) ENTERPRISE DTD 12 NOV 1984                 |
| 188 | NELSON, DALLENT MALONE      |            | 06 JUN 1908 | 17 SEP 2002 | FUNERAL NOTICE, BASTROP (LA) ENTERPRISE DTD 20 SEP 2002           |
| 371 | NELSON, FANNIE              |            |             | 25 JUL 1983 | OBITUARY, BASTROP (LA) ENTERPRISE DTD 29 JUL 1983                 |
| 275 | OAKS, LEE BERTHA            | MRS.       | 28 FEB 1911 | 05 DEC 1999 | OBITUARY, BASTROP (LA) ENTERPRISE DTD 09 DEC 1999                 |
| 499 | ODOM, MINA (MINNIE) MCGUIRE | MRS.       | MAR 1887    | 29 APR 1947 | PARS-ALICE VESTER AND HENRY MCGUIRE                               |
| 377 | ODOM, MYKA TRINITY          | INFANT     |             | 07 MAR 1983 | OBITUARY, BASTROP (LA) ENTERPRISE DTD 10 MAR 1983                 |
| 493 | PALMORE, IVEN DEAN          |            |             | 06 MAY 2006 | OBITUARY, NEWS-STAR (MONROE, LA) DTD 11 MAY 2006                  |

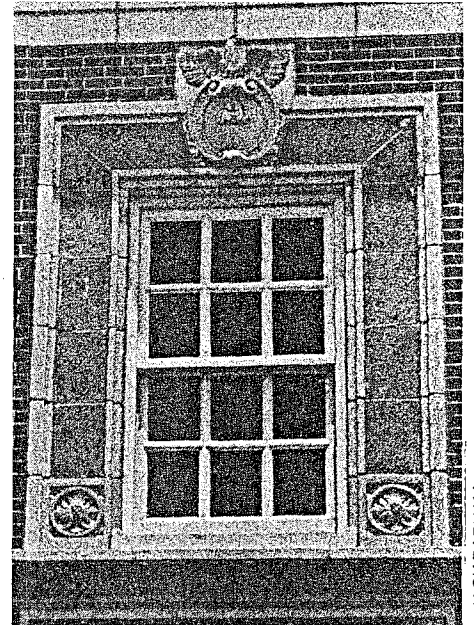
JERUSALEM MISSIONARY BAPTIST CHURCH CEMETERY

| ID  | NAME (Last, First, Name)       | PRE/SUFFIX | BIRTHDATE   | DEATHDATE   | INSCRIPTION/NOTES  |
|-----|--------------------------------|------------|-------------|-------------|--|
| 152 | PAYTON, ANDRA TAVIO            |            | 1988        | 2001        | FUNERAL NOTICE, BASTROP (LA) ENTERPRISE DTD 01 NOV 2001            |
| 397 | PAYTON, BRIDGES LEE            |            |             | 16 APR 1993 | OBITUARY, BASTROP (LA) ENTERPRISE DTD 20 APR 1993                  |
| 56  | PAYTON, CARRIE L.              |            | 24 DEC 1906 | 26 FEB 1997 | OBITUARY, BASTROP (LA) ENTERPRISE DTD 28 FEB 1997                  |
| 159 | PAYTON, CHARLIE T.             |            | 01 OCT 1917 | 26 AUG 1940 | BEST GUESS AT YEAR OF BIRTH FROM VAULT NAME PLATE                  |
| 158 | PAYTON, EARLEAN                |            | 13 MAR 1907 | 30 MAY 1968 |  |
| 490 | PAYTON, ESSUL                  | JR.        |             | 27 JUN 2008 | OBITUARY, BASTROP (LA) ENTERPRISE DTD 05 JUL 2008                  |
| 64  | PAYTON, ESSUL                  |            | 10 FEB 1885 | 11 FEB 1986 | DUO. OBIT., BASTROP (LA) ENTERP. DTD 14 FEB 1986, FTNOTE #1        |
| 153 | PAYTON, LULA M. (MAE)          |            | 16 NOV 1938 | 06 FEB 1995 | MOTHER. OBITUARY, BASTROP (LA) ENTERPRISE DTD 09 FEB 1995          |
| 160 | PAYTON, MAG                    |            | 10 APR 1894 | 29 NOV 1948 |  |
| 57  | PAYTON, MALVINE BARNES         |            | 26 DEC 1909 | 10 AUG 1979 | VAULT  |
| 63  | PAYTON, MOLLIE YOUNG           |            | 10 APR 1892 | 04 FEB 1986 | DUO W/ ESSUL PAYTON. OBIT., BASTROP (LA) ENTERP. DTD 07 FEB 1986   |
| 385 | PEGROSS, WALTER                | JR.        |             | 26 AUG 1984 | OBITUARY, BASTROP (LA) ENTERPRISE DTD 27 & 29 AUG 1984             |
| 328 | PENNY, LAWSON                  |            | 12 JUL 1844 | 22 NOV 1912 | FALLEN OBELISK RESTS BETWEEN ID # 294 AND ID # 295                 |
| 250 | POINTER, GRACIE P.             |            | 1878        | 1966        | BELOVED MOTHER OF ETTA MOORE                                       |
| 427 | POLK, SALLIE                   | MRS.       |             | FEB 2007    | FUNERAL NOTICE, BASTROP (LA) ENTERPRISE DTD 22 FEB 2007            |
| 343 | POWELL, SHARRON VANESSA        |            | 21 NOV 1959 | 26 JAN 2001 | FP: PARENTS-MR. & MRS. DOROTHY AND LEONARD CHAFFORD                |
| 265 | PRATHER, FRANCIS W. (WINSTON)  |            | 20 JAN 1912 | 02 JAN 1999 | OBITUARY, BASTROP (LA) ENTERPRISE DTD 08 JAN 1999                  |
| 130 | RANDLE, JOHN L.(LEWIS)         |            | 07 DEC 1946 | 23 JUN 2001 | SP 4 U S ARMY VIETNAM. OBIT., BASTROP (LA) ENTERP. DTD 29 JUN 2001 |
| 294 | REDDICK, LEVI                  |            | 1926        | 2001        | FUNERAL NOTICE, BASTROP (LA) ENTERPRISE DTD 02 AUG 2001            |
| 210 | REESE, RUBY L. (LEE MCWOODSON) |            | 18 MAY 1932 | 10 OCT 2001 | OBITUARY, BASTROP (LA) ENTERPRISE DTD 12 OCT 2001                  |
| 105 | REEVES, ALEX                   | SR.        | 26 DEC 1899 | 01 AUG 1979 | HUSBAND OF ETHEL BAIS REEVES                                       |
| 223 | REEVES, ALICE                  |            | 06 AUG 1889 | 11 AUG 1968 |  |
| 369 | REEVES, ANNIE L.               |            |             | 07 AUG 1985 | OBITUARY, BASTROP (LA) ENTERPRISE DTD 09 AUG 1985                  |
| 110 | REEVES, ETHEL BAIS             |            | 28 JUN 1907 | 12 FEB 1972 | WIFE OF ALEX REEVES  |
| 104 | REEVES, JOHNNIE E.             |            | 1930        | 31 JUL 1992 | VAULT. OBITUARY, BASTROP (LA) ENTERPRISE DTD 05 AUG 1992           |
| 185 | REEVES, LUIVOID                |            | 29 APR 1918 | UNDER SOIL  | LOUISIANA PVT 4078 QM SERVICE CO WORLD WAR II                      |
| 184 | REEVES, LYDIA WRIGHT           |            | 19 MAR 1900 | 07 AUG 1985 |  |
| 106 | RHODES, FANNIE HARRIS          |            | 24 APR 1934 | 18 NOV 1999 | CHILDREN LISTED IN FOOTNOTE NO. 2                                  |
| 5   | RICHARDS, TINесе               |            | 12 AUG 1929 | UNDER SOIL  |  |
| 35  | RIGGINS, AVRIS                 |            | 30 APR 1916 | 23 JAN 1993 | OBITUARY, BASTROP (LA) ENTERPRISE DTD 01 FEB 1993                  |
| 293 | ROBINSON, ANTHONY              |            | 13 FEB 1923 | 04 SEP 1992 | SM 2 U S NAVY W W II. OBIT., BASTROP (LA) ENTERP., 11 SEP 1992     |
| 351 | ROBINSON, BERRY                |            | 02 MAR 1906 | 22 DEC 1952 |  |
| 410 | ROBINSON, DEXTER LAVELL        |            |             | 06 MAY 1992 | OBITUARY, BASTROP (LA) ENTERPRISE DTD 08 MAY 1992                  |
| 341 | ROBINSON, EARLEAN              |            |             | 15 OCT 1970 | FP: PARENTS-MR. & MRS. IVORY DUNCAN; SP-LEE EDWARD ROBINSON        |

JERUSALEM MISSIONARY BAPTIST CHURCH CEMETERY

| ID  | NAME (Last, First, Name)      | PRE/SUFFIX | BIRTHDATE   | DEATHDATE   | INSCRIPTION/NOTES  |
|-----|-------------------------------|------------|-------------|-------------|--|
| 259 | ROBINSON, EARLEAN R.          |            | 18 MAR 1895 | 07 APR 1982 | W/O JOE ROBINSON. OBIT., BASTROP (LA) ENTERP. DTD 13 APR 1982  |
| 260 | ROBINSON, ELI                 |            |             | 28 JAN 1976 | VAULT  |
| 52  | ROBINSON, FALLINE D.          |            | 25 OCT 1916 | BLANK       |  |
| 337 | ROBINSON, GREEN               | JR.        | 02 DEC 1894 | 08 MAR 1987 | OBITUARY, BASTROP (LA) ENTERPRISE DTD 14 MAR 1987              |
| 242 | ROBINSON, JAMES O. (OTIS)     |            | 27 JAN 1920 | 19 FEB 1999 | OBITUARY, BASTROP (LA) ENTERPRISE DTD 25 FEB 1999              |
| 258 | ROBINSON, LIMMIE              |            | 06 MAR 1900 | 25 JUL 1985 | OBITUARY, BASTROP (LA) ENTERPRISE DTD 27 JUL 1985              |
| 317 | ROBINSON, LUCILLE             |            | 15 FEB 1927 | 10 MAR 1998 |  |
| 151 | ROBINSON, MARY                |            | 08 JUN 1912 | 20 JUL 1969 | MOTHER   |
| 240 | ROBINSON, REBECCA             |            | 30 APR 1912 | 28 JAN 1982 |  |
| 267 | ROBINSON, REVELL              |            | 15 AUG 1916 | 05 JAN 1953 | LOUISIANA PVT CO B 371 INFANTRY WORLD WAR II                   |
| 468 | ROBINSON, ROBERT              |            |             | 17 DEC 2008 | FUNERAL NOTICE, NEWS-STAR (LA) DTD 21 DEC 2008                 |
| 241 | ROBINSON, ROY                 |            | 16 APR 1924 | 25 MAY 1993 | OBITUARY, BASTROP (LA) ENTERPRISE DTD 21 MAY 1993              |
| 428 | ROBINSON, SIRMARY             | MRS.       |             | 19 MAR 1991 | OBITUARY, BASTROP (LA) ENTERPRISE DTD 22 MR 1991               |
| 266 | ROBINSON, THOMAS ZENIE        |            |             |             | LOUISIANA PVT I CL ....(REST IS UNDER SOIL) HS TOP IN 2 PIECES |
| 338 | ROBINSON, WILLIAM             |            | 01 MAY 1889 | 26 OCT 1982 | FP: PARENTS-REV. AND MRS. LAURA (WRIGHT) & G. R. ROBBINSON.    |
| 25  | ROGERS, FEPHOPRIS             |            | 1934        | 1951        |  |
| 418 | ROSE, ADA WILL                | MRS.       |             | 30 AUG 1992 | OBITUARY, BASTROP (LA) ENTERPRISE DTD 02 SEP 1992              |
| 382 | ROSE, GILBERT                 |            |             | 04 OCT 1980 | OBITUARY, BASTROP (LA) ENTERPRISE DTD 10 OCT 1980              |
| 114 | ROSEBY?, LOANN                |            | UNDER       | SOIL        | BEST GUESS AT SURNAME  |
| 67  | ROSS, VIRGINIA CAROL TUCKER   |            | 1937        | 1999        | VAULT. OBITUARY, BASTROP (LA) ENTERPRISE DTD 30 SEP 1999.      |
| 388 | ROWDEN, ISAAC                 |            |             | 28 DEC 1979 | OBITUARY, BASTROP (LA) ENTERPRISE DTD 03 JAN 1979              |
| 192 | SAWYER, ARTHUR                |            | 16 DEC 1902 | 16 DEC 1975 | VAULT  |
| 356 | SAWYER, PATRICIA A.           | MRS.       |             | 20 AUG 1980 | OBITUARY, BASTROP (LA) ENTERPRISE DTD 22 AUG 1980              |
| 12  | SAWYER, SOPHIA O.             |            | 04 DEC 1954 | 02 SEP 1998 | OBITUARY, BASTROP (LA) ENTERPRISE DTD 11 SEP 1998              |
| 191 | SAWYER, WILLIE                |            | 04 JUL 1905 | 25 OCT 1970 | VAULT  |
| 302 | SCOTT, DOROTHY (WATKINS)      |            | 1944        | 1 FEB 1997  | OBITUARY, BASTROP (LA) ENTERPRISE DTD 05 FEB 1997              |
| 443 | SCOTT, JAMES HUNTER           |            |             | 06 JUL 1997 | OBITUARY, BASTROP (LA) ENTERPRISE DTD 09 JUL 1997              |
| 492 | SCOTT, MATTIE                 |            |             | 08 AUG 2006 | FUNERAL NOTICE, NEWS-STAR (MONROE, LA) DTD 12 AUG 2006         |
| 150 | SEAY, ALEX                    |            | 15 OCT 1909 | 25 APR 1973 |  |
| 74  | SEAY, ELIZABETH               | SIS.       | 17 NOV 1907 | 16 OCT 1998 | MAMA. OBITUARY, BASTROP (LA) ENTERPRISE DTD 22 OCT 1998        |
| 507 | SEAY, ISAAC                   |            |             | 08 APR 2009 | FUNERAL NOTICE, NEWS-STAR (MONROE, LA) DTD 16 APR 2009         |
| 149 | SEAY, PERLINE (PEARLEAN)      |            | 12 DEC 1907 | 10 AUG 1999 | OBITUARY, BASTROP (LA) ENTERPRISE DTD 16 AUG 1999              |
| 75  | SEAY, ROBERT                  |            | 1905        | 1948        | AGE 43. BELOVED HUSBAND OF ELIZABETH SEAY.                     |
| 454 | SECREASE, CLARA A. BROWNFIELD | MRS.       |             | 18 OCT 1998 | OBITUARY, BASTROP (LA) ENTERPRISE DTD 22 OCT 1998              |

[To be continued in the next issue of The Genie]



JACK BAPHAM

“Reprinted from *Historic Shreveport* with permission”

## Strand Theatre

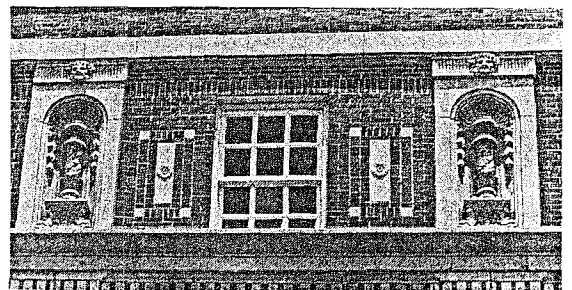
*Crockett and Louisiana. 1925.*

What better building to symbolize the ambitions and pretensions of Shreveport in the 1920s than the magnificent Strand Theatre. Architect Emile Weil and interior designer Paul Heerwagen joined to create a neo-baroque expression of movie-palace grandeur that quickly earned the nickname “Million Dollar Theatre.” There were many ornate movie theaters built in America. Only a few such as the Strand survive.

The strand was the flagship of the Saenger Amusement Company, which began down the street above Saenger Brothers’ drugstore. The company’s 300 theaters were located in the South and the Caribbean. Curiously, only the Strand bore the names of the Saengers’ business partners, the Ehrlich brothers. Hence the title, “Saenger-Ehrlich Enterprises.”

Inside the Strand, gold-leafed columns flank the 81-foot-wide stage, and a 939-pipe Robert Morton organ presides over the orchestra pit. Interior

paintings and other handcrafted artistry add to the opulence. Elsewhere there are dressing rooms and a four-story office building.



The Strand opened on July 3, 1925, with a performance of “The Chocolate Soldier” by the Fortune Gallo Comic Opera Company. Live performances gradually yielded to movies, but by 1977 even the latter no longer could sustain the theater. The Board of Directors of the American Broadcasting Companies donated the property to a non-profit Shreveport group.

The Strand is being restored to become a center of the performing arts. The building is listed in the National Register of Historic Places.



## *Historic Shreveport*

“®reprinted from *Historic Shreveport* with permission”



BAILEY THOMSON

21

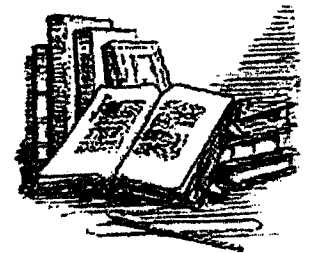
### *First Methodist Church Head of Texas Street. 1913.*

First Methodist Church appears to loom over the downtown as travelers crossing the Texas Street Bridge first catch sight of the imposing structure. Texas Street ends abruptly at Common Street directly in front of the church's entrance — hence the address.

The present building's predecessor was a Gothic Revival church of red brick, built in 1889. Methodists dedicated the new church in 1913. The education building was added to the rear of the church in 1943-44. Flanking buildings were completed in 1964. In 1972, the large neon cross that long topped the church was replaced by the present steeple.

## EXCHANGE PERIODICAL REVIEW

Compiled by Constance Whatley



Many of the periodicals we receive, in exchange for "The Genie" provide up-to-date ideas on how to solve your research challenges. Always search the periodical published in your geographical interest area, but don't overlook other periodicals that may include articles of general interest to the researcher or about families that have migrated. These periodicals are located at the Shreve Memorial Library Broadmoor [Genealogy Department] Branch, Shreveport, Louisiana.

**Our Heritage**, Volume 31, Number 1, February 2010, published by Van Zandt County Genealogical Society, Canton, Texas, page 4, under the heading FYI is a notice that the LDS has finished digitizing the Virginia Freedmen's Bureau records that were started after the Civil War in an attempt to ease four million slaves into society. You can access these records through [Familysearch.org](http://Familysearch.org).

**Le Raconteur**, Volume XXX, Number 1, March 2010, published by Le Comite des Archives de la Louisiane, Baton Rouge, La, on page one is an editorial entitled "Louisiana Celebrates the Bicentennial of the West Florida Revolt". This issue of *Le Raconteur* joins that commemoration by presenting genealogical and historical material from several of the Florida Parishes.

**Kinfolks**, Volume 34, Number 1, March 2010, published by Southwest Louisiana Genealogical Society, Lake Charles, Louisiana pages 7-19, is a presentation entitled Louisiana Manuvers-1940 that was given during the November program by Rickey D. Robinson. The information he gathered, photographs, equipment and uniforms are on display in the Pearson Ridge Military Museum. Pearson Ridge is in Southeast Sabine Parish.

**Rabbit Tracks**, Volume 27, Number 3 & 4, Fall-Winter 2009, published by Conejo Valley Genealogical Society, Thousand Oaks, California on pages 1&2, is a list of research tips called "Trawling for Ancestors."

**Oregon Genealogical Society Quarterly**, Volume 48, Number 2, Spring, 2010, page 3, is an item entitled, "2010 Census to be Shredded." It states that presently the Census Bureau and The National Archives plan to throw out the 2010 forms after computing the statistical data. Read about it and then write the National Archivist. <http://blog.capecodgensoc.org/2010/02/save-2010-census-no-images-to-be.html>.

**Central Louisiana Genealogical Society**, Volume 24, Numbers 1 & 2, Winter-Spring 2010, published by Central Louisiana Genealogical Society, Alexandria, La on pages 21-23 of Volume 1, is a listing of African American buried in Canada Memorial Gardens, Allen Parish, Louisiana. On pages 24-50 of Volume 1 are obituaries listed in the Alexandria newspaper, "The Town Talk. On pages 3-44 of Volume 2 are obituaries listed in the Alexandria, Louisiana newspaper, "The Town Talk."

## ALTGA's Horn-Book: "Lessons from Helen and Her North Carolina Pearls of Wisdom"

---

*For presentation and discussion at the  
ALTGA General Session of 12 June 2010.  
© 2010, Philip Burnett Adderley, CG<sup>SM</sup>*

Helen F. M. Leary, CG(emeritus), FASG, FNGS<sup>1</sup> is a fabulous genealogist. To me she is an even greater teacher. In 2010, the National Genealogical Society created and placed on its website several video clips featuring her. For beginning genealogists they are all wonderful to hear—she is a spellbinding speaker—but researchers at all levels should especially listen to “On Genealogy” and “Stories from My Research.”<sup>2</sup>

Unwary beginners focus on their target ancestor or family and move on, often leaving in their wake a cornucopia of unresearched [*and probably unknown*] kin, friends, associates, and neighbors. In “On Genealogy” Helen takes us even further, stressing the need to research slowly and to study all that you can about the culture, society, law, geography, morality, religion, agriculture, and, yes, horticulture [☺<sup>3</sup>] of each ancestor’s time and place.<sup>4</sup> If you listen to some other videos of her on the same website, you will realize that she integrated *years* of diverse and serious study into her work.<sup>5</sup>

In “Stories from My Research” you will hear two separate accounts that each has the power to teach.<sup>6</sup>

Her first story takes us on a research roller-coaster searching for a North Carolina Civil War veteran. After a few twists and turns she brings us face-to-face with a real life situation that indirectly reminds us to beware assuming parent-child relationships in census schedules and other records that do not directly state them. As the story closes, learn how her thorough research

---

Permission is granted to reproduce this article for educational purposes. Email: phil@311research.com. CG and Certified Genealogist are Service Marks of the Board for Certification of Genealogists, used under license after periodic evaluations by the Board, and the board name is registered in the US Patent & Trademark Office.

<sup>1</sup> FASG is Fellow, American Society of Genealogists. FNGS is Fellow of the National Genealogical Society.

<sup>2</sup> Helen F. M. Leary, “On Genealogy” and “Stories from My Research,” National Genealogical Society, 2010, Adobe Flash Player format, *Publications and Videos* ([http://www.ngsgenealogy.org/cs/videos\\_online](http://www.ngsgenealogy.org/cs/videos_online) : accessed 25 May 2010).

<sup>3</sup> One of our Education Committee members is a horticulturist.

<sup>4</sup> Helen F. M. Leary, “On Genealogy.”

<sup>5</sup> The National Genealogical Society holds five videos featuring Helen F. M. Leary on its website ([http://www.ngsgenealogy.org/cs/videos\\_online](http://www.ngsgenealogy.org/cs/videos_online) : accessed 25 May 2010). Of these, “How I Became a Genealogist” and “Jefferson Hemings Research” attest to her extensive personal training and development, and her exhaustive research approach respectively.

<sup>6</sup> Helen F. M. Leary, “Stories from My Research.”

helped both the client and her to rationalize *why* the Civil War veteran acquired the personality that he did.

Helen's second story explores the value of researching an entire neighborhood. To get the most benefit, listeners should carefully try to 'hear between the lines' and estimate Helen's research methodology. How did she go about finding an elusive wife's maiden name? The answers are not completely obvious. You may have to listen to the video more than once. Even after she turned over her findings to her client, the final answer to the research question was still in doubt until the client himself added a final special clue.

There is a lot of meaning packed into the words that follow. Listen to all she has to say, no matter what experience you believe you have. She ranks us.

*"I think good ones [genealogists] respect the ancestors and let the ancestors speak to them through the records.... The more background you know ... the more you bring to a record, the better the record will be able to speak to you."*

*--- Helen F. M. Leary, "On Genealogy" <sup>7</sup>*

Author's note: some works are timeless and their reach extends beyond their stated scope. Ms. Leary wrote the ground-breaking work *North Carolina Research: Genealogy and Local History*, published by the North Carolina Genealogical Society in 1996 at Raleigh.

---

<sup>7</sup> Helen F. M. Leary, "On Genealogy," minutes 1:15 through 2:06.

# ARK-LA-TEX GENEALOGICAL ASSOCIATION, INC.

An Alphabetical Membership list for '2010, with Names Researching.

This list is for members to make contact with each other where there is a common surname being researched.

Any other use is prohibited.

| #  | Surname              | Given Name         | Address                       | City           | St | Zip Code   | Names Researched                        |
|----|----------------------|--------------------|-------------------------------|----------------|----|------------|---|
| 1  | <b>Adderley</b>      | Philip Burnett     | 9828 Deepwoods Drive          | Shreveport     | LA | 71118-5037 | Adderley, Hollis, Booman & Burrett      |
| 2  | <b>Alcorn</b>        | Elizabeth D.       | 5562 Bordley Drive            | Houston        | TX | 77056-2328 | Burford, Jackson, Hall & Cowley         |
| 3  | <b>Alcorn</b>        | George Avery       | 5562 Bordley Drive            | Houston        | TX | 77056-2328 | Dady, Nicholson & Jackson               |
| 4  | <b>Allen</b>         | George Alvin       | 3323 Candleway Drive          | Spring         | TX | 77388-5223 | Allen, Bradford, Washington & Parker    |
| 5  | <b>Allison</b>       | Eloise T.          | P.O. Box 564                  | Ringgold       | LA | 71068-0564 | Oliver, Morris, Thomas & Tyler          |
| 6  | <b>Allison</b>       | Bill               | 8327 E Wilderness Way         | Shreveport     | LA | 71106-5918 | Dean, White, Johnston & Rorex           |
| 7  | <b>Allison</b>       | Nancye             | 8327 E Wilderness Way         | Shreveport     | LA | 71106-5918 | Stringer, Herpin, Reeves & Goodman      |
| 8  | <b>Anderson</b>      | Jack               | P. O. Box 596                 | Webers Falls   | OK | 74470-0596 | Farrington, Badnes, Teague & Powell     |
| 9  | <b>Anderson, Jr.</b> | John D.            | 4402 Oldfield Drive           | Arlington      | TX | 76016-6227 | Anderson, Allen, Wallace & Shackelford  |
| 10 | <b>Atkins</b>        | Brenda Custer      | 11211 Greenbrier Lane         | Kansas City    | MO | 64137-2421 | Watson, Mosley, Douglas & Womble        |
| 11 | <b>Banks</b>         | Ruby               | 1401 Oden St # 3              | Shreveport     | LA | 71104-3838 | Orahood, Brummett, Ross & Banks         |
| 12 | <b>Bardsley (LM)</b> | Dr. Daneta Daniel  | 1471 E. Penrose Drive         | Salt Lake City | UT | 84103-4466 | Sullivan, Litton, Daniel & Worthington  |
| 13 | <b>Barritt</b>       | Sheila K. Webb     | 426 Homalot Drive             | Shreveport     | LA | 71106-7547 | Tillery, Page, Locke & Wells            |
| 14 | <b>Barritt</b>       | Charles O.         | 427 Homalot Drive             | Shreveport     | LA | 71106-7547 | Gillespie, Webb, Stump & Barritt        |
| 15 | <b>Barron</b>        | Patricia Williams  | 939 Idlewilde Lane            | Lake Charles   | LA | 70605-2639 | Motes, McCain & Campbell                |
| 16 | <b>Bedford</b>       | Delores Carter     | 2421 Kemp Lane                | Shreveport     | LA | 71107-6018 | Hicks, Carter, Toliver & Robinson       |
| 17 | <b>Bell</b>          | Martha K. (Maggie) | 114 Albert Avenue             | Shreveport     | LA | 71105-3004 | Keene, Webb, Bell & Robb                |
| 18 | <b>Bernard</b>       | Glenda             | 2922 Chardonnay Circle        | Shreveport     | LA | 71106-8418 | Efferson, Smiley, St. Clair & Patterson |
| 19 | <b>Blunt</b>         | Mary Ann           | 2705 NW 60th Street           | Oklahoma City  | OK | 73112-7072 | Blunt, McCrorey, Robinson & Alien       |
| 20 | <b>Bowers</b>        | Kathryn Everett    | 5117 Sealands Lane            | Fort Worth     | TX | 76116-8415 | Everett, Pleasant, Dubose & Tate        |
| 21 | <b>Bradley</b>       | Roberta            | 9912 Pilot Point Street       | Ft Worth       | TX | 76108-4025 | Copeland, McDaniel, Rushing & Watts     |
| 22 | <b>Brasell</b>       | Lon "L"            | 3550 Cedar Creek Dr. Apt 1007 | Shreveport     | LA | 71118-2320 | Brasell, Ratcliff, Sledge & Denton      |
| 23 | <b>Broussard</b>     | Micheal            | 645 Wilkinson Street          | Shreveport     | LA | 71104-3131 | Prijean, Delhornme & Bossier            |
| 24 | <b>Brown</b>         | Dorothy C.         | 4525 Naff Street              | Bastrop        | LA | 71220-5301 | Crouch, Newsom, King & Howell           |
| 25 | <b>Byone</b>         | Allen              | 4708 Fir Avenue               | Seal Beach     | CA | 90740-3011 | Beaudoin, Coutie, Rachal & Breal        |

ARK-LA-TEX GENEALOGICAL ASSOCIATION, INC.

THE GENIE Second Quarter 2010 91

| #  | Surname         | Given Name      | Address                      | City          | St | Zip Code   | Names Researched                          |
|----|-----------------|-----------------|------------------------------|---------------|----|------------|---|
| 26 | Causey          | Madge           | 208 W. K-Jon Road            | Grand Cane    | LA | 71032-5212 | Landry, Brunet, Medine & McElroy          |
| 27 | Chapek          | June            | 1187 Barkston Court          | Aurora        | IL | 60502-6821 | Low, Williams & Honeycutt                 |
| 28 | Chesson         | Denise Illian   | 615 Oneonta Street           | Shreveport    | LA | 71106-1621 | Illian, Compton, Todd & Haley             |
| 29 | Christian       | Marilyn B.      | 924 Lincoln Drive            | Shreveport    | LA | 71107-3118 | Crump, Casey, Freeman & Polk              |
| 30 | Click           | Nelda           | 641 Haynes Avenue            | Shreveport    | LA | 71105-3827 | Click, Patton, Rogers/Rodgers & Furlow    |
| 31 | Cole            | John            | 4511 Lee Avenue              | Shreveport    | LA | 71107-2933 | Cole, Sutton, Holt & Risinger             |
| 32 | Cole            | Monnie Holt     | 4511 Lee Avenue              | Shreveport    | LA | 71107-2933 | Raley, Carrol, Phillips & Hightower       |
| 33 | Craft           | Sammie          | 2503 Cypress Villiage Drive  | Benton        | LA | 71006-9118 | Craft, Cotton, Turner & Basinger          |
| 34 | Cummings        | Maryanne        | 104 Marrero Drive            | Shreveport    | LA | 71115-2728 | Cummings, Byrane, Harty & Roche           |
| 35 | Davis           | Jean            | SR 275 Box 1157              | Broadview     | NM | 88112-9535 | Benjamin, Carr, Blackshire & Bacon        |
| 36 | Davis           | Wanda Bowlin    | 32 East Sunset Drive         | Kerville      | TX | 78028-4817 | Goff, Carter, Sherried & Gober            |
| 37 | Dillard         | Walter L.       | 330 Comstock Road            | Dayton        | NV | 89403-9516 | Caldwell, Ford, Watson & Salone/Sloan     |
| 38 | Dorsey          | Aaron           | 3107 Naylor Road SE Unit 203 | Washington    | DC | 20020-1680 | Whitaker, Means, Sampson & Stanley        |
| 39 | Duncan          | Dianne M.       | 11 Fulton Way                | Port Townsend | WA | 98368-8727 | Gibson, Yarbrough, Legg & Deason          |
| 40 | Edwards         | Mary Juanita R. | 3875 Line Avenue, Apt. 142   | Shreveport    | LA | 71106-1183 | Peacock, Ott, Robbins & Robinette         |
| 41 | Estes           | James A.        | 2504 Sundsvall Court         | Shreveport    | LA | 71118-4520 | Estes, Gray, & Marler                     |
| 42 | Farrington (LM) | William         | 119 Donelon Drive            | Hanrahan      | LA | 70123-4703 | Kimball, McMMain, McLaughlin & Farrington |
| 43 | Farthing        | Garry L.        | 532 Jenkins Road             | Shreveport    | LA | 71107-2222 | Farthing                                  |
| 44 | Gaines          | Dr. Cheryl      | 903 E. 53rd Street           | Chicago       | IL | 60615-4305 | McCoy, Johnson, Smith & Norris            |
| 45 | Garsee          | Billie Bickham  | 9073 Billiu Ridge Drive      | Shreveport    | LA | 71118-2611 | Garsee, Largars, Sansom & Blackmon        |
| 46 | Gatlin          | Tommy           | 1501 Guadalupe Street        | San Angelo    | TX | 76901-3136 | Hollis, Martin & Gatlin                   |
| 47 | Gorman          | Betty Jon       | P.O. Box 113                 | Diana         | Tx | 75640-0113 | Gorman, Fenlaw, Ward & Kennedy            |
| 48 | Goynes, Jr.     | Col. Carroll    | 10019 Canterbury Drive       | Shreveport    | LA | 71106-8401 | Shackelford, Glass, Goynes & Nutt         |
| 49 | Gregory         | Kay Kerbow      | # 3 Hillside Ct.             | Austin        | TX | 78746-6436 | Dooley, Cain, Kerbow & Barnes             |
| 50 | Griffin         | Patricia W.     | 3884 Winterpark Drive        | Shreveport    | LA | 71119-7011 | Williams, Forte, Wagner & Cobb            |
| 51 | Griffin         | Willie R.       | 3884 Winterpark Drive        | Shreveport    | LA | 71119-7011 | Hartwell, Kelley, Neal & Grissom          |

ARK-LA-TEX GENEALOGICAL ASSOCIATION, INC.

THE GENIE Second Quarter 2010

92

| #  | Surname      | Given Name         | Address                    | City         | St | Zip Code   | Names Researched                      |
|----|--------------|--------------------|----------------------------|--------------|----|------------|---------------------------------------|
| 52 | Hamilton     | Margie [Robert A.] | 503 Sophia Lane            | Shreveport   | LA | 71115-2505 | Hart, Sebastian, McCarty & Young      |
| 53 | Harp         | Wesley             | 126 Scott Drive            | Ball         | LA | 71405-3378 | Harp, Ferrant, Gentry & Nugent        |
| 54 | Hatcher      | Buddy              | 560 Webb Rogers Rosd       | Waskom       | TX | 75692-3854 | Baker, Shelemi, Patterson & Sample    |
| 55 | Hatcher      | Sarah              | 560 Webb Rogers Rosd       | Waskom       | TX | 75692-3854 | Harris, Szelemi, Scott & Hatcher      |
| 56 | Henderson    | Roy L.             | 334 Yolanda Lane           | Shreveport   | LA | 71105-4338 | Henderson                             |
| 57 | Hitchcock    | Geraldine S.       | PO Box 93                  | Hosston      | LA | 71043-0093 | Hale, Hawkins & Stanberry             |
| 58 | Hope         | Lillian Barnes     | 106 Larkin Street          | Benton       | LA | 71006-9413 | Barnes, Hope, Edwards & Perove        |
| 59 | Hunt         | Doris B.           | 5649 South Lakeshore Drive | Shreveport   | LA | 71119-4016 | Parker, Hunt, Barr & Williams         |
| 60 | Hyatt        | Janis              | 3306 Flamborough Drive     | Pasadena     | TX | 77503-2019 | Hyatt & Hooper                        |
| 61 | Jackson      | Sheila & Alfred    | 6314 West Canal Blvd       | Shreveport   | LA | 71108-3719 | McCoy, White, Johnson & Hargraze      |
| 62 | Jennings     | Dale O.            | 194 Vance Road             | Benton       | LA | 71006-9585 | Ace, Brownlee, Vance & Arnold         |
| 63 | Johnson      | Elaine             | 1812 Crater Circle         | Bossier City | LA | 71112-4404 | Arts, Adrain, Moreland & Fretter      |
| 64 | Johnson      | Jim A.             | 1812 Crater Circle         | Bossier City | LA | 71112-4404 | Broom, Sanders, Bussey & Kea          |
| 65 | Johnston     | Barbara Ann        | 1313 Shamrock Street       | Bossier City | LA | 71112-3013 | Johnston, West, Johnson & Burks       |
| 66 | Joiner       | Dr. Gary D.        | 1039 Blanchard Place       | Shreveport   | LA | 71104-2913 | Joiner, Dillard & Henderson           |
| 67 | Jones        | Esther             | 2901 Hoyte Drive           | Shreveport   | LA | 71118-2405 | Eley, Coon, Lee & Ramsy               |
| 68 | Jones        | Jim                | 2901 Hoyte Drive           | Shreveport   | LA | 71118-2405 | Jones, Colvin, Mitchell & Attaway     |
| 69 | Jones        | Janice Barker      | 6922 Hwy 3                 | Benton       | LA | 71006-3902 | Jones                                 |
| 70 | Katalenich   | Linda              | 5856 Bluebonnett Drive     | Bossier City | LA | 71112-4970 | Liston, Simonton, Monroe & Shingleton |
| 71 | Kiarsis      | Debbie             | 11159 Via Ereantada Way    | South Jordan | UT | 84095      | Parker & Butler                       |
| 72 | Lazarus      | Harry A.           | 7709 Tampa Way             | Shreveport   | LA | 71105-5701 | Malteau, Gaabert, Barbier & Tessier   |
| 73 | Lynn         | Jimmy              | 8242 Waterwood             | Greenweeo    | LA | 71033-3367 | Lynn, Warren, Fields & Battle         |
| 74 | Lynn         | Linda              | 8242 Waterwood             | Greenweeo    | LA | 71033-3367 | Lynn, Warren, Fields & Battle         |
| 75 | Maca         | Phyllis            | 173 Promenade Avenue       | Shreveport   | LA | 71115-3241 | Barnett, Cameron, Oberg & Brown       |
| 76 | Marler       | Janice Marie       | 1607 Sun Street            | Mission      | TX | 78752-6538 | Marler, Pate, Corley & McGraw         |
| 77 | Mathews (LM) | Reed               | 24 Colonn Park Drive       | Shreveport   | LA | 71115-3165 | Mathis, Rogers, Kirtley & Carlton     |

# ARK-LA-TEX GENEALOGICAL ASSOCIATION, INC.

THE GENIE Second Quarter 2010

93

| #   | Surname           | Given Name      | Address                         | City           | St | Zip Code   | Names Researched                                   |
|-----|-------------------|-----------------|---------------------------------|----------------|----|------------|--|
| 78  | <b>Mattocks</b>   | Denny F.        | 10148 Plum Point                | Oil City       | LA | 71061-9771 | <b>Mattocks</b>                                    |
| 79  | <b>Mayeaux</b>    | Kathryn Wolfe   | 217 Suzanne Drive               | Shreveport     | LA | 71115-2619 | <b>Bryant, Grigsby, Wolfe &amp; Cundiff</b>        |
| 80  | <b>McCabe</b>     | Betty Murphy    | 163 Adger Street                | Shreveport     | LA | 71105-3001 | <b>Wingo, McGraw &amp; McCabe</b>                  |
| 81  | <b>McGathey</b>   | Suzanne Dampier | 7640 S. Delaware Street         | Indianapolis   | IN | 46227-2419 | <b>Dampier, McGathey, Weiland &amp; Nied</b>       |
| 82  | <b>McLaughlin</b> | Jerry           | P.O. Box 236                    | Oil City       | LA | 71061-0236 | <b>McLaughlin, Page, Price &amp; Stokes</b>        |
| 83  | <b>Miles</b>      | Deotha B.       | 3313 Westheimer Street          | Shreveport     | LA | 71103-2060 | <b>Miles, Lewis, Steinlein &amp; Moss</b>          |
| 84  | <b>Millen</b>     | Cynthia D.      | 8582 Dixie Blanchard Road       | Shreveport     | LA | 71107-8175 | <b>Miears, Hester, Dalton &amp; Carter</b>         |
| 85  | <b>Mitchell</b>   | Vicky Davis     | 6601 South 21st Place           | Phoenix        | AR | 85042-4654 | <b>Taylor, Dickerson, Ware &amp; Tolliver</b>      |
| 86  | <b>Moncure</b>    | James D.        | 170 Bruce Street                | Shreveport     | LA | 71105-3711 | <b>Moncure</b>                                     |
| 87  | <b>Morris</b>     | Bobby R.        | 1506 Glen Avenue                | Shreveport     | LA | 71109-1507 | <b>Summerfield, Morris, Gary &amp; Owens</b>       |
| 88  | <b>Neal</b>       | Carola          | P.O. Box 20921                  | Castro Valley  | CA | 94546-8921 | <b>Neal, Seals, Ward &amp; Jamison</b>             |
| 89  | <b>Nelson</b>     | B. Delight      | 1813 Bayou Circle               | Bossier City   | LA | 71112-4036 | <b>Goodwin, VanCamp, Toner &amp; Quinn</b>         |
| 90  | <b>Owens</b>      | Raymon L.       | 846 East River Road             | Shreveport     | LA | 71105-2811 | <b>Owens, Chandler, Fields &amp; Wilkes</b>        |
| 91  | <b>Penn</b>       | Ora A.          | P.O. Box 236                    | Frisco         | TX | 75034-0004 | <b>Penn</b>  |
| 92  | <b>Perdue</b>     | Linda           | 710 Aberdeen Circle             | Temple Terrace | FL | 33617-7812 | <b>Lafitte, Brummett &amp; Davenport</b>           |
| 93  | <b>Petrey</b>     | Curtis N.       | 130 Chelsea Drive               | Shreveport     | LA | 71105-4206 | <b>Poindexter, LaGrande, LeGrande &amp; Ratley</b> |
| 94  | <b>Procell</b>    | Ellen C.        | 2820 Crestview Avenue           | Tyler          | TX | 75701-7011 | <b>Cook, Cato, Myrick &amp; Duke</b>               |
| 95  | <b>Rainbolt</b>   | Brenda J.       | 307 Greenwood Street            | Morningsport   | LA | 71060-9788 | <b>Rainbolt</b>                                    |
| 96  | <b>Randall</b>    | Brenda Custer   | 2950 Le Oaks                    | Bossier City   | LA | 71111-7801 | <b>Foster, Custer, Brooks &amp; McDaniel</b>       |
| 97  | <b>Reed</b>       | Katie M.        | PO Box 94                       | Shongaloo      | LA | 71072-0094 | <b>VanScliever, Maines, Barkman &amp; McDuffie</b> |
| 98  | <b>Reed</b>       | Robert E.       | PO Box 94                       | Shongaloo      | LA | 71072-0094 | <b>Slack, Edwards &amp; Lewis</b>                  |
| 99  | <b>Robert</b>     | Irma Jean       | 3128 Anna Street                | Shreveport     | LA | 71103-2009 | <b>Robert</b>                                      |
| 100 | <b>Rose</b>       | Vernell S.      | 7110 University Drive, Apt. 206 | Shreveport     | LA | 71105-5044 | <b>Taylor, Patterson, Deweese &amp; Seefeldt</b>   |
| 101 | <b>Rose</b>       | Victor C.       | 7110 University Drive, Apt. 206 | Shreveport     | LA | 71105-5044 | <b>Rose, Willis, Chambliss &amp; Berry</b>         |
| 102 | <b>Sanders</b>    | Doris L.        | 1035 W 109th Street             | Chicago        | IL | 60643-3733 | <b>Clark, Kendrick, Blake &amp; Darden</b>         |
| 103 | <b>Sanders</b>    | Edgar G.        | 217 India Drive                 | Shreveport     | LA | 71115-3005 | <b>McDaniel, Kernop, Vance &amp; Adkins</b>        |



# ARK-LA-TEX GENEALOGICAL ASSOCIATION, INC.

THE GENIE Second Quarter 2010 94

| #   | Surname          | Given Name         | Address                    | City          | St | Zip Code   | Names Researched                        |
|-----|------------------|--------------------|----------------------------|---------------|----|------------|---|
| 104 | <b>Scholes</b>   | June L.            | 9404 Castlebrook Drive     | Shreveport    | LA | 71129-4808 | Landry, Brunet, Scholes & McNamara      |
| 105 | <b>Scott</b>     | Linda Darnell      | 446 Woodrow Street         | Shreveport    | LA | 71108-4032 | Sanders, Gilliard & Scott               |
| 106 | <b>Shockey</b>   | Carol              | 7800 Youree Drive #208     | Shreveport    | LA | 71105-5577 | Shockey, Hunter, Petrie & Riggs         |
| 107 | <b>Smiley</b>    | Calvin R.          | 1705 Shady Lane            | Shreveport    | LA | 71118-2226 | Smiley                                  |
| 108 | <b>Smiley</b>    | Joann Calloway     | 8923 Bernay Drive          | Shreveport    | LA | 71118-2006 | Smiley, Calloway, Futch & Reeves        |
| 109 | <b>Smiley</b>    | Carmen Renae       | 8923 Bernay Drive          | Shreveport    | LA | 71118-2006 | Smiley, Calloway, Bishop & Ressel       |
| 110 | <b>Spilker</b>   | Bonnie L.          | 8805 W 80th Street         | Overland Park | KS | 66204-3307 | Molhusen, Lindsey, Floyd & Brewer       |
| 111 | <b>Spilker</b>   | William G.         | 8805 W. 80th Street        | Overland Park | KS | 66204-3307 | Spilker, Scott, Sample & Bradley        |
| 112 | <b>Standard</b>  | James              | 1415 Beverly Street        | Bossier City  | LA | 71112-3310 | Rixinger, Bufe & Stavenbager            |
| 113 | <b>Standard</b>  | Manuela Asta       | 1415 Beverly Street        | Bossier City  | LA | 71112-3310 | Standerfer, Cox & Webb                  |
| 114 | <b>Stewart</b>   | Jessie B.          | 1525 Sycamore Avenue, #221 | Shreveport    | LA | 71103-2977 | Barnes, Phillip, Pipkins & Hampton      |
| 115 | <b>Stoll</b>     | Nellygrace (Chris) | 5007 Richland Place        | Bossier City  | LA | 71112-5032 | Stove, Fowler, Garland & Mays           |
| 116 | <b>Stover</b>    | Martha Louis       | 4431 N. Fairway Drive      | Shreveport    | LA | 71109-4907 | Miller, Albritton, Green & Pinkerton    |
| 117 | <b>Tatum</b>     | Richard M.         | P.O. Box 603               | Minden        | LA | 71058-0603 | Tatum, Barrow, Kinnebrew & Taylor       |
| 118 | <b>Taylor</b>    | Lise A.            | 138 Boulevard Street       | Shreveport    | LA | 71104-2504 | Brannaman, Chatelain, Coulon & Gauthier |
| 119 | <b>Thompson</b>  | Teresa             | 6510 W. 70th Street        | Shreveport    | LA | 71129-2302 | Thompson                                |
| 120 | <b>Townsend</b>  | Sara H.            | 3501 Champion Lake Blvd.   | Shreveport    | LA | 71105-3778 | Hightower, McKinney, Gerge & Habeeb     |
| 121 | <b>Trull</b>     | Ester              | 2276 Strong Hwy            | El Dorado     | AK | 71730-8459 | Trull, Vines, Rugg(s) & Dutton          |
| 122 | <b>Turner</b>    | Dorothy Y.         | 189 Ockley Drive           | Shreveport    | LA | 71105-3022 | Smith, Cannon, Rushing & Prestridge     |
| 123 | <b>Turner</b>    | Melvin             | 6011 N. Lakeshore Drive    | Shreveport    | LA | 71107-9836 | Turner & Norton                         |
| 124 | <b>Ward</b>      | Walter Howard      | 103 Crestwood Drive        | Tullahoma     | TN | 37388-5602 | Murphy, Gary, Willis & Wilson           |
| 125 | <b>Weddle</b>    | Jack Talley        | 803 Herrington Drive       | Springhill    | LA | 71075-2115 | Painwater, Stever, Talley & Sharp       |
| 126 | <b>Weiland</b>   | Herman L.          | 2511 N Waverly Drive       | Bossier City  | LA | 71111-5933 | Rudy, Fairbanks, Lewis & Leonhardt      |
| 127 | <b>West</b>      | Carolyn Allen      |                            |               |    |            | Jones, Adams, Allen & Kain              |
| 128 | <b>Westbrook</b> | Annette            | 3503 Blue Willow Circle    | Haughton,     | LA | 71037-9323 | Westbrook, Handy, Turner & Mosley       |
| 129 | <b>Whatley</b>   | Constance C.       | 2046 Capt. Shreve Drive    | Shreveport    | LA | 71105-3820 | Thomas, Wimberly, Carter & Regan        |

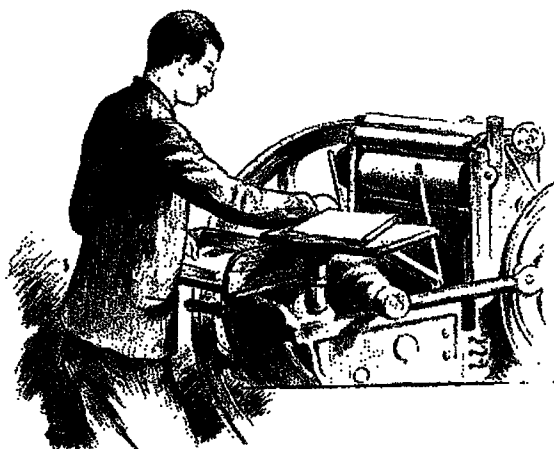
# ARK-LA-TEX GENEALOGICAL ASSOCIATION, INC.

THE GENIE Second Quarter 2010

| #   | Surname           | Given Name     | Address                    | City         | St | Zip Code   | Names Researched                     |
|-----|-------------------|----------------|----------------------------|--------------|----|------------|--------------------------------------|
| 130 | <b>Williams</b>   | Tom R.         | 6400 Middle Ridge Lane     | Hixson       | TN | 37343-3526 | Russel, Tennille, Williams & Atkins  |
| 131 | <b>Williamson</b> | Cathy          | 314 Rutherford Street      | Shreveport   | LA | 71104-3310 | Grosjean, Pryor, Fory & Ward         |
| 132 | <b>Wilson</b>     | Bernard J.     | 9000 North Lattimore Lane  | Tucson       | AZ | 85742-8859 | Wilson, Tanner & Given               |
| 133 | <b>Wise</b>       | Anne Simmons   | 6011 Ellington Way         | Bossier City | LA | 71111-5717 | Simmons, Bridges, Lytle & Stuart     |
| 134 | <b>Wise</b>       | Edwina         | 190 Ardmore Street         | Shreveport   | LA | 71105-2108 | McFordland & Meridi                  |
| 135 | <b>Wolfe</b>      | Kathryn Cooper | 3875 Line Avenue, Apt. 135 | Shreveport   | LA | 71106-1179 | Littlefield, Bryant, Cooper & Bailey |
| 136 | <b>Woodham</b>    | Michell J.     | 10145 Thornwood Drive      | Shreveport   | LA | 71106-7687 | Woodham, Valade, Tunstall & Branan   |
| 137 | <b>Woods</b>      | Clara Currey   | 6219 E. Texas Street #33   | Bossier City | LA | 71111-6950 | Beard, Scott & Neeley                |
| 138 | <b>Woods (LM)</b> | Isabelle M.    | 2016 Surrey Lane           | Bossier City | LA | 71111-5535 | Taitt, Huggins, Muniz & Quinones     |
| 139 | <b>Wright</b>     | Olden Micheal  | 510 East Dalzell Street    | Shreveport   | LA | 71104-2778 | Wright, Walker, Radin & Brackens     |
|     |                   |                |                            |              |    |            |                                      |
|     |                   |                |                            |              |    |            |                                      |
|     |                   |                |                            |              |    |            |                                      |
|     |                   |                |                            |              |    |            |                                      |
|     |                   |                |                            |              |    |            |                                      |

95

**LM (Life Member)**



**ARK-LA-TEX GENEALOGICAL ASSOCIATION  
INSTITUTIONAL MEMBERSHIPS '2010**

| #  | Name  | Address                   | City            | State | Zip Code   |
|----|---|---------------------------|-----------------|-------|------------|
| 1  | Allen County Public Library                             | P. O. Box 2270            | Fort Wayne      | IN    | 46801-2270 |
| 2  | Bossier Parish Library History Center                   | 2206 Beckett Street       | Bossier City    | LA    | 71111-3730 |
| 3  | Claiborne Parish Library                                | 909 Edgewood Drive        | Homer           | LA    | 71040-3009 |
| 4  | Clayton Library<br>[Clayton Library Friends]            | 5300 Caroline Street      | Houston         | TX    | 77004-6896 |
| 5  | Dallas Public Library                                   | 1515 Young Street         | Dallas          | TX    | 75201-5499 |
| 6  | East Bank Regional Library                              | 4747 W Napoleon Avenue    | Metairie        | LA    | 70001-2310 |
| 7  | The DAR Library<br>Memorial Continental Hall            | 1776 D Street NW          | Washington D.C. |       | 20006-5303 |
| 8  | Genealogical Society of Utah                            | 50 E. North Temple Street | Salt Lake City  | UT    | 84150-3400 |
| 9  | State Historical Society of Wisconsin                   | 816 State Street          | Madison         | WI    | 53706-1482 |
| 10 | Los Angeles Public Library                              | 630 West 5th Street       | Los Angeles     | CA    | 90071-2002 |
| 11 | LSUS Library & Archives<br>[Complementary]              | 8515 Youree Drive         | Shreveport      | LA    | 71115-2399 |
| 12 | Mid-Continent Public Library<br>(Midwest Genealogy CTR) | 3440 S Lees Summit Road   | Independence    | MO    | 64055-1923 |
| 13 | Natchitoches Parish Library<br>[Complementary]          | 450 2nd Street            | Natchitoches    | LA    | 71457-4649 |
| 14 | New Orleans Public Library                              | 219 Loyola Avenue         | New Orleans     | LA    | 70112-2044 |

**ARK-LA-TEX GENEALOGICAL ASSOCIATION  
INSTITUTIONAL MEMBERSHIPS '2010**

| #  | Name  | Address                   | City            | State | Zip Code   |
|----|---|---------------------------|-----------------|-------|------------|
| 15 | Ouachita Parish Public Library                                | 1800 Stubs Avenue         | Monroe          | LA    | 71201-5787 |
| 16 | Cincinnati Public Library                                     | 800 Vine Street           | Cincinnati      | OH    | 45202-2009 |
| 17 | Red River Parish Library-Coushatta<br>[Complementary]         | P.O. Box 1367             | Coushatta       | LA    | 71019-2008 |
| 18 | Santa Clara County<br>Historical and Genealogical Society     | 2635 Homestead Road       | Santa Clara     | CA    | 95051-5387 |
| 19 | Shreve Memorial Library Broadmoor<br>[Complementary]          | 1212 Captain Shreve Drive | Shreveport      | LA    | 71105-2819 |
| 20 | St. John The Baptist Parish Library                           | 2920 Highway 51           | LaPlace         | LA    | 70068-6422 |
| 21 | State Library of Louisiana<br>[Complementary]                 | P. O. Box 131             | Baton Rouge     | LA    | 70821-0131 |
| 22 | The Historic New Orleans Collection                           | 410 Chartres Street       | New Orleans     | LA    | 70130-2120 |
| 23 | The Library of Congress<br>[Complementary]                    | 101 Independence Ave., SE | Washington D.C. |       | 20540-0002 |
| 24 | The New York Public Library<br>[History & Genealogy Division] | P.O. Box 2237             | New York        | NY    | 10163-2237 |
| 25 | University of LA at Lafayette - Dupre Library                 | 400 E. Saint Mary Blvd.   | Lafayette       | LA    | 70503-2040 |
| 26 | University of New Orleans - Long Library                      | 2000 Lakeshore Drive      | New Orleans     | LA    | 70148-0001 |
| 27 | Weatherford Public Library                                    | 1014 Charles Street       | Weatherford     | TX    | 76086-5007 |
| 28 | Wichita Genealogical Society                                  | P.O. Box 3705             | Wichita         | KS    | 67201-3705 |

## Searching For Your Ancestor?

Here is a list of ideas for searching for your ancestor. Maybe something on this list will spark an idea of where to look next.

a. Track the family through the "Census". Census are taken every ten years so you can track the family backwards. Census list age and place of birth and whether or not they owned property.

b. Look for a "Will". They will be recorded some time after the death. If they owned property; there maybe a Will.

c. Look for "Probate Records". If they had land and no Will then there should be probate records also if there were young children, even if the mother was still living, often there were Guardianship Records.

d. Look for "Church Records". If he was a member of a local church they may be listed in the church records

e. Look for "Tax Records". The tax records will show when he started paying taxes and when he stopped. That could mean when he move into an area and when he moved out.

f. Locate the "Cemetery". If there was a stone for him, it may list his date of birth and date of death. Also see who is buried near him or in the same cemetery. If there were written records kept for that cemetery (called sexton records) then they may list where in the cemetery he was buried and the date of death and birth.

g. If you happen to stumble across a "Family Bible", it might have his death and birth date listed.

h. And it is possible you might stumble across some old family "Letters" listing who knows what great information.

i. If he was well known in his community then it is possible that if a county history was written, (for the county he lived in), that his family may have been listed in it.

j. Look in old "Newspapers". In years closer to us you might find an "Obituary". Most of the time these listed spouse, children, brothers and sisters and parents and place of birth and date of birth

k. Look in "Pension Records" for military service. If the wife received benefits there may be a wealth of information listed somewhere in his records.

l. Look in the vital records for the marriage. "Marriage Records" sometimes listed the name of the parents.

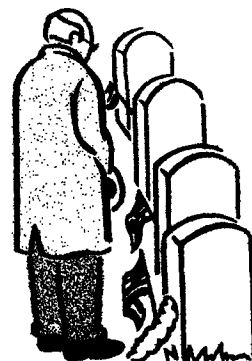
So, now how do you find the above records? Well most of them can be seen at your local Family History Center.

*This is my favorite saying.*

I fully realize that I have not succeeded in answering all of your questions. Indeed, I feel I have not answered any of them completely.

The answers I have found only serve to raise a whole new set of questions-- which only lead to more problems-- some of which we weren't even aware were problems. To sum it up ... in some ways I feel we are confused as ever, but I believe we are as confused on a higher level and about more important things!

Happy Hunting!  
Susette Cook  
330 Stuart Drive  
Odenville, Alabama 35120  
Susette\_cook@hotmail.com



ARK-LA-TEX GENEALOGICAL ASSOCIATION  
P. O. Box 4463, Shreveport, La 71134-0463

2010 Membership Application and Dues Remittance

Date \_\_\_\_\_

Type of Membership (Check 2)

- a. Individual \_\_\_\_\_ or Family \_\_\_\_\_  
b. New Member \_\_\_\_\_ or Renewal (Due Jan 31) \_\_\_\_\_

PLEASE PRINT

Full Name \_\_\_\_\_

Name of Additional Family Member (For Family Membership) \_\_\_\_\_

Address \_\_\_\_\_

City \_\_\_\_\_ State \_\_\_\_\_ Zip +4 (If known) \_\_\_\_\_

Home Phone (\_\_\_\_\_) \_\_\_\_\_

E-Mail Address \_\_\_\_\_

Family Surnames: (Four per member)

1. \_\_\_\_\_ 2. \_\_\_\_\_ 3. \_\_\_\_\_ 4. \_\_\_\_\_

1. \_\_\_\_\_ 2. \_\_\_\_\_ 3. \_\_\_\_\_ 4. \_\_\_\_\_

Dues Information: Annual Membership in ALTGA is from January 1 through December 31.

- Annual dues (Jan – Dec) are \$20.00 for an individual membership and \$25.00 for a family membership.
- Dues for persons joining in last half of year (Jul 1 - Dec 31) are: \$10.00 for an individual membership and \$12.50 for a family membership.
- Renewal membership dues are due by January 31 at the 'whole year' annual rate. Early renewal appreciated!

Each member will receive the current quarterly issue of the Genie. *Complete and send your check with this application.*

Print my name, address and family surnames in the membership roster that will appear in the 2<sup>nd</sup> Quarter Genie.

Do not print my address or surnames in the membership roster that appears in the 2<sup>nd</sup> Quarter issue of the Genie

THIS BOX IS FOR OFFICE USE ONLY.

Date Received \_\_\_\_\_ Amount of Money Received \_\_\_\_\_

Check No. \_\_\_\_\_ Cash \_\_\_\_\_ Added to Mailing List \_\_\_\_\_

Mailed Quarterlies for: March \_\_\_\_\_ June \_\_\_\_\_ September \_\_\_\_\_ December \_\_\_\_\_

## SURNAME INDEX

[A surname may appear more than once on a page.]

### A

Adderley 51, 54, 58,  
60, 62, 88

Alexander 73

Allen 73

Alley 73

Anderson 73

Archie 73

Armstrong 73

Arnold 73

Arthur 73

Austin 73

### B

Bailey 73

Baken 70

Baker 73

Banks 73

Banner 73

Barber 73

Bates 73

Bernard 51

Bias 73

Bird 67, 68

Blakely 73

Blakley 73

Blumenthal 58

Bodenheimer 54, 55, 56,  
57, 58, 59, 60, 61, 62

Bolden 73

Bouie 73

Boyd 70, 74

Bradford 54

Bradley 68

Brand 74

Brandon 74

Brasher 68

Briggs 74

Brill 55

Brock 58

Brooks 74

Brown 74

Brownfield 75

Brueggerhoff 57, 58

Burks 75

Burnette 75

Burrell 75

Butler 75

Byrd 68

### C

Cage 75

Cain 75

Capers 75

Carlisle 51

Carter 75

Causey 75

Chaffold 75

Chatman 75

Chisom 75

Clarke 66

Cleveland 76

Cohen 58, 59, 60

Combs 76

Conway 76

Cook 69, 72, 99

Cooke 76

Covington 76

Curry 76

### D

Daniels 76

Davenport 76

Davis 68, 76

Days 76

Devall 76

Devoil 76

Dickson 69, 70

Dillard 76

Dowles 76

Downs 76

Dreyfuss 56

Dudley 77

Duffie 77

Duncan 77

### E

Efron 59

Estes 77

Evans 77

Ewings 77

### F

Flemmings 77

Fletcher 69

Flowers 77

Fort 66

Franklin 69

Frazies 77

Freeman 77

### G

Gabe 61

Gastor 77

Gauthier 77

Gee 77

German 77

Gerstein 61

Gilbert 77

Girard 51

Girtmon 77

Goldberg 59, 60, 61, 62

Goldsmith 54, 57, 58

Goodsen 77

Gordon 77

Grant 77

Green 77

### H

Hargis 67

Hargrove 78

Harris 69

Harris 78

Haughton 66, 69

Haynes 78

Henderson 78

Henry 70

Hess 54

Higginbotham 78

Hill 78



## SURNAME INDEX

[A surname may appear more than once on a page.]

Hilton 78  
Hobbs 55  
Hobdy 52, 53  
Hollins 78  
Holzman 55, 56  
Howard 78  
Hubbard 78  
Hudson 79  
Hundley 79

### I

Irvin 79

### J

Jackson 79  
James 79  
Jefferson 79  
Jenkins 79  
Jennings 65  
Johns 67  
Johnson 51, 64, 67, 69, 79  
Jones 80

### K

Kaffie 59  
King 80

### L

Lancaster 56  
Lanier 80, 81  
Lavall 81  
Leary 88, 89  
Lee 81  
Lehman 70  
Levy 54, 55, 58, 59  
Lewis 81  
Limuel 81  
Linear 81  
Linnear 81  
Lofton 54  
Love 81

### M

Mack 81  
MacMaster 52

Manry 56  
Mathews 51  
Matthews 81  
Mays 81  
McDonald 81  
McGee 81  
McWoodson 81  
Melton 81  
Mims 67, 68, 69  
Minnieweather 81

Mitchell 81  
Moore 81, 82  
Morgan 82  
Morrison 82  
Moses 82  
Mullen 82  
Mullens 82

### N

Neal 82  
Nelson 82

### O

Oaks 82  
Odom 82

### P

Palmore 82  
Payton 83  
Pegross 83  
Penny 83  
Pointer 83  
Polk 83  
Powell 83  
Prather 83

### R

Randle 83  
Rebstock 55  
Reddick 83  
Reese 83  
Reeves 83  
Rhodes 83  
Richards 83

Riggins 83  
Robindon 83, 84  
Robinson 87  
Rogers 84  
Rose 84  
Rosenberg 59  
Ross 69, 84  
Rowden 84  
Russ 70

### S

Sawyer 84  
Scott 84  
Scruggs 69  
Seay 84  
Secrease 84  
Sellers 63  
Skannal 67, 68, 69, 70  
Slaughter 69  
Smith 69, 70  
Snider 66  
Snyder 66  
Spears 67  
Speer 67  
Stone 66  
Stringer 69

### T

Taylor 51, 67  
Thomas 67  
Tutt 67, 68

### W

Walker 70  
Weil 54  
Whatley 87  
White 70  
Woods 51