



VOLUME 47

SECOND QUARTER 2013

NUMBER 2

PUBLISHED QUARTERLY BY

ARK-LA-TEX GENEALOGICAL ASSOCIATION, INC.

P.O. BOX 4463
SHREVEPORT, LOUISIANA 71134-0463

THE GENIE

VOLUME 47

SECOND QUARTER 2013

NUMBER 2

TABLE OF CONTENTS

FEATURES

- 52** In Memory of...
Ray Owens (1924-2013)
- 61** Hughes Spur and Alden Bridge
Bossier Parish Louisiana
[Continued from 1st Qtr 2013]
By Dale Jennings
- 68** Genealogy
"The African-American Genealogical
Research Institute"
By Donna Sutton
Submitted by Sonja Webb
- 69** Periodical Exchange Review
By Blenda Efferson Bernard
- 72** New Books at Shreve Memorial
Library's Genealogy Department
Submitted by Sonja D. Webb
- 75** Cherry Hill No.2 Missionary
Baptist Church Cemetery
Mer Rouge, Louisiana
Submitted by Isabelle M. Woods
- 85** Constable and Sheriff's Sale
in Bienville Parish, Louisiana
- 87** Estate Sales in Titus and Grayson
Counties, Texas

- 89** Ark-La-Tex Genealogical Association
Alphabetical Membership list for 2013
- 93** Ark-La-Tex Genealogical Association
Institutional Memberships 2013
- 98** How to Organize Your Genealogy Files
By Tammy E. [genealogysf.blogspot.com]

DEPARTMENTS

- 51** The President's Message
By Philip Burnett Adderley, CG
- 53** The 2nd Vice-President's Letter
By Reed Mathews
- 56** ALTGA's Horn-Book:
Wildcard Search Strategies:
Ancestry.com's U.S. Census Collection"
By Philip Adderly, CG
- 60** ALTGA's Annual Genealogical Seminar
Speaker: John Sellers
- 67** Tuition Grant Recipient
- 67** New Members

ARK-LA-TEX GENEALOGICAL ASSOCIATION, INC.

Post Office Box 4463
Shreveport, Louisiana 71134-0463

The *Ark-La-Tex Genealogical Association, Inc.* is a non-profit, non-sectarian, non-political, educational organization dedicated solely to the cause of genealogy. This organization is governed by these purposes:

To collect, preserve, and make available genealogical materials, documents, and records; to encourage an interest in genealogy and to sponsor educational programs for its development; to promote and publicize the City of Shreveport, Louisiana, as a major genealogical research center for genealogists and historians; to cooperate with and assist all other genealogical, historical, and patriotic societies in the furtherance of these purposes; to compile and publish a quarterly composed of records and data related to the science of genealogy.

The *Ark-La-Tex Genealogical Association, Inc.* meets on the second Saturday of each month from 1:00 p.m. to 3:00 p.m. at the Randle T. Moore Senior Citizen Center, 3101 Fairfield Avenue, Shreveport, LA.

Dues for membership from January 1 through December 31 of each year in the *Ark-La-Tex Genealogical Association, Inc.* are \$20.00 for an Individual Membership and \$25.00 for an additional family member, same household, and one quarterly per household.

All members receive four issues of The GENIE, which is published quarterly.

The *Ark-La-Tex Genealogical Association, Inc.* will publicize a book of genealogical interest in The GENIE when submitted by the publisher or an author. These books are then donated to the Shreve Memorial Library, Broadmoor Branch Genealogy Department, 1212 Captain Shreve Drive, Shreveport, Louisiana 71105, where they are made available to the public. The Ark-La-Tex Genealogical Association, Inc. periodically donates other genealogical material to this library.

The *Ark-La-Tex Genealogical Association, Inc.* welcomes queries, which are published free in The GENIE. A query must be no more than seventy (70) words, either typewritten or legibly handwritten.

Statement of Publication

[Ark-La-Tex Genealogical Association, Inc.]

The Genie is published quarterly with issues in March, June, September and December. Each member receives four issues for each year of membership. All material published in *The Genie* is compiled and contributed by the members. Members and nonmembers of the Ark-La-Tex Genealogy Association may contribute material for publication in *The Genie* (*bible records, cemetery listings, diaries, wills, etc.*). Such contributions are appreciated and encouraged. Send material for publication to *The Genie* at the Association's mailing address. Material will be used at the discretion of the Editorial Review Board as space permits. We reserve the right to edit and/or condense material as needed. Submission deadlines are the last week before the first day of the month of quarterly publication.

The Association *exchanges periodicals* with other genealogical and historical organizations publishing data of general interest. These periodicals are then donated to the Broadmoor Branch *Genealogy* Section of the Shreve Memorial Library. We regret that we cannot exchange with limited family organizations. However, send samples of your publications for review. Since many publications possess information of value concerning families contain therein.

When *Cemetery Records* are submitted, include the name of the contributor, the copier, date copied and cemetery locations (such as road name or number, community, etc.) and also the Section, Township, and Range, if known. When *Bible Records* are submitted, give date and publisher of the Bible (if known), date copied, name of the contributor, name of present owner and the original owner.

Queries are free and encouraged. Please submit them typed or very plainly written. Space is limited. Please be brief and concise, using no more than 70 words per query. The editor reserves the right to edit or reject queries not suitable for publication.

The *Genie* cannot be responsible for errors or inaccuracies, but will hasten to publish corrections. Please read the material carefully and advise the Association in writing of corrections.

This publication is *indexed* in the Periodical Source Index published by the Allen County Public Library Foundation, Ft. Wayne, IN.

Copyright Laws

All who submit material from any source should be aware of copyright restrictions. When applicable, permission to use published material must be in writing and should be included when manuscript is submitted. Source and date of information used should be indicated.

**Ark-La-Tex Genealogical Association
Board of Directors For 2013**

President	Philip B. Adderley, CG	phil@311research.com
First Vice President	Glenda E. Bernard	glenda646@gmail.com
Second Vice President	Reed Mathews	reedmathews@yahoo.com
Recording Secretary	Brenda Randall	custerbren@aol.com
Corresponding Secretary	Raymon Owens	blickblaque@shreve.net
Treasurer	June L. Scholes	jscholez@aol.com
Trustee	Phyllis Maca	phyllismaca@bellsouth.net
Trustee	Barbara Johnston	barbara.johnston@bossierschools.org
Trustee	Linda Lynn	jlynn48@att.net
Trustee	Sonja Webb	sdwebb@bellsouth.net
Past President	Jim Johnson	jjohnson747@suddenlink.net

PUBLICATION (THE GENIE)

Editor	Willie R. Griffin	wraygriffin3@bellsouth.net
Printing	Willie R. Griffin	(318) 631-6031
Printing	Jim Johnson	jjohnson747@suddenlink.net
Labels	June L. Scholes	686-1745
Exchange Reviewer	Glenda E. Bernard	glenda646@gmail.com
Exchange	June L. Scholes	(318) 686-1745
Bulk Mailing	Reed Mathews	reedmathews@yahoo.com

ALTGA COMMITTEES

Refreshment Coordinator	Brenda Randall	custerbren@aol.com
Reception/Name Tags	Chris Stoll	(318) 746-0383
Programs	Jim Johnson	(318) 746-1851
 Education Committee:		
Chairperson	Phil Adderley	phil@311research.com
Vice-Chairperson	Glenda E. Bernard	glenda646@gmail.com
Member	Marilyn B. Christian	mbcspirit@aol.com
Member	Doris B. Hunt	dbhunt7@bellsouth.net
Member	Sonja Webb	sdwebb@bellsouth.net
Member	Peggy LaCour	suzanne.delacour@gmail.com
Web Page	Jim Johnson	(318) 746-1851
Seminar	Jim Johnson	jjohnson747@suddenlink.net
Membership	June Scholes	jscholez@aol.com

Visit our website: <http://www.rootsweb.com/~laaltga/>

THOUGHTS FROM JAIL

PRESIDENT'S MESSAGE, ARK-LA-TEX GENEALOGICAL ASSOCIATION

I recently spent some time in jail, twice in the same week actually. Strange to say, but I could not avoid it: Faulkner County Jail, Conway, Arkansas.

It started innocently. A client's paternal lineage project suggested possible relations in Faulkner County. The Broadmoor Branch Library's Genealogy Department's microfilm and published works were reviewed relative to that county and state. Concurrently, Internet searches proceeded via *WorldCat*, *Ancestry.com*, *Fold3.com*, *GenealogyBank.com*, *Find-a-Grave.com*, *FamilySearch.org*, and the General Land Office for a wide variety of records held on these marvelous websites.

Unfortunately my targets were living the remaining days of their lives in the black hole of genealogical recordkeeping—the early 1900s in this location. Why the black hole label? It seems the historical community focused the larger portion of its available dollars and effort archiving older and at-risk sources, coming forward in time; while clerks of court and similar repositories who routinely access present-day records digitized them first, then added additional records working backwards in time. In my experience the size and timeframe of each gap varies with locale.

The research plan evolved, but still included “gapped” land, probate, tax, military, and newspaper records, first in Faulkner County, Arkansas, itself, held onsite by the clerks of the local courts [the County Court and the Circuit Court], and second at the Arkansas History Commission in Little Rock.

The staffs at both clerks of court offices were wonderful. After researching holdings in their current locations and additional records in the courthouse basement, the Clerk of the County Court assigned someone to escort me to the top floor of the courthouse. She had to get a special key, but said nothing about where she was taking me, only that the key would be needed in the elevator to gain access to the top floor. She asked me if I had a cell phone because she intended to leave me there, and I might need it to get out later. Destination: the old county jail cells.

The clerks of both courts had run out of room. They had ‘archived’ the oldest records of the two courts in the two main jail cells, with additional cabinets full of records wrapped around the outside of the cells, and additional records stored in what had to be the old guard stations in remaining rooms on the top floor. During my “confinement,” searches for dusty probate, chancery, civil and criminal case files continued under creepy circumstances, as the only light filtering through had to wind its way around stacks of registers, boxes, and cabinets. I failed to bring a flashlight.

The dim light, eerie surroundings and the nature of the records gave the whole process a paranormal, Twilight Zone feel. The first tenet of the Genealogical Proof Standard—conduct a “reasonably exhaustive search”—took on an added dimension. I had to go to jail to do it this time. Strange to say, but I hope you do, too! Just keep your wits about you and tread the past carefully.

Philip Burnett Adderley, CGSM, *President*.

SM CG or Certified Genealogist are service marks of the Board for Certification of Genealogists, used under license by Board-certified associates after periodic competency evaluations, and the board name is registered in the US Patent & Trademark Office.

**In Memory of
Raymon "Ray" Owens
(1924-2013)**

In memory of our friend, fellow member, mentor, and past President Raymon Owens who passed away Sunday, March 31, 2013. Ray was special to us, and we will miss him tremendously.

Obituary



Memorial services celebrating the life of Raymon L. Owens, 89, of Shreveport, LA was held at 11:00AM Thursday, April 4, 2013 at Broadmoor United Methodist Church in Shreveport, LA with the Rev. Ken Irby officiating.

Mr. Owens died March 31, 2013 at home after attending Easter Worship Services.

Mr. Owens was a charter member of Broadmoor United Methodist Church. He was a member of the Shreveport Rotary Club, the Shreveport Orchid Society, and the Shreveport Genealogy Society. He was an AARP Driver Safety Program instructor and served as State Coordinator for several years. Ray was the Scout Executive for the Norwela Council, Boy Scouts of America before retiring and opening Petland Pet Shop.

Mr. Owens received a Bachelor of Science degree from Centenary College. He served in World War II in the U.S. Army and was awarded the Purple Heart and the Bronze Star.

Mr. Owens was preceded in death by his wife of 65 years, Peggy Wilkes Owens.

Blick Blaque is survived by his sister, Shirley James and her husband Curtis James of Phoenix, AZ, two sons and their wives, three grandchildren, four great-grandchildren and numerous nieces and nephews.

Visitation was immediately following the service at the church. Memorials may be made to Broadmoor United Methodist Church of Shreveport or Norwela Council of the Boy Scouts of America.

Published in Shreveport Times on April 3, 2013

2nd Vice President's Letter

By Reed Mathews

The spring of 2013 has been an exciting, productive time for the Ark-La-Tex Genealogical Association. As president and chairman of the education committee Phil Adderley has brought a whole new emphasis on education. He has proposed that the Association offer scholarships to members who seek genealogical training, one requirement being that the beneficiaries contribute to instructing the membership or to writing for *The Genie*. To fund a pilot for such a scholarship program this spring, Phil offered his own money. The Board of Directors gratefully accepted this very generous donation. Phil has also proposed that the Association attract better speakers for our monthly programs by paying them. The Board has agreed to budget funds for this purpose.

Our monthly meetings have been wonderful educational experiences. Hornbook sessions presented by members of the education committee at our regular meetings have provided members and guests a wealth of practical research methodology. Phil Adderley discussed "Wildcard Search Strategies: Ancestry.com's U. S. Census Collection" for our March Hornbook session, as one example. The speakers for our monthly meetings have been especially good, lately, as well.

In March, Joe Slattery spoke on "Veterans of the War of 1812 who Lived and Died in Caddo Parish." Joe Slattery is well known to the local genealogical community as the resident guru at the Shreve Memorial Library's Genealogy Department. Joe discussed War of 1812 research and its importance to American genealogy. He has identified 48 veterans of the war who lived in Caddo Parish. He has researched these men and their families and located many of their graves. Many of the descendants of these men continue to live in the area, even now.

Among Joe's more interesting subjects were Joshua Walpole, Archibald Blue McMillan, and Alfred Flournoy. Joshua Walpole owned property in what is now the South Highlands neighborhood of Shreveport. Archibald McMillan lived near the site of South Park Mall. He is reported to have written poetry in English and in Gaelic. Alfred Flournoy lost a leg fighting the Creeks. He became a medical doctor and a confidant of Andrew Jackson. Joe has promised to write a complete report of his findings to be published in *The Genie*.

In May, Sally Sinor, Director/Archivist of the Grand Lodge of Louisiana, discussed the difficulty of researching Masonic ancestors in her presentation, "Masonic Records of the Grand Lodge of Louisiana." She explained that although Masons are pledged to secrecy, their practices are not truly unknown. She discussed the information available, which included records of degrees earned and possibly full obituaries. She offered to help any researcher find information on their family members who were Masons in Louisiana.

The Family History Assistance Days were great successes. On three successive Saturdays in the month of April, the Association's most knowledgeable members in cooperation with those of our sister organizations the Friends of Genealogy and Gencom rallied to help family historians of every level of expertise address their problems. On the morning of April 6 at the Broadmoor Branch of the Shreve Memorial Library, Phil Adderley and the education committee provided a "Lecture and a Panel Discussion for Beginners." More than 30 people attended.

The afternoon was devoted to the specific needs of the attendees. The list of assistants included Brenda Randall, Don Davis, Doris Hunt, Esther Jones, Glenda Bernard, Isabelle Woods, Jim Johnson, Joe Slattery, Linda Lynn, Marilyn Christian, Peggy LaCour, Phil Adderley, Reed Mathews, Sonja Webb, Toni Turk and Jim Jones. (My list is incomplete, I am sure. I am sorry. I do not mean to leave out any of the very good workers who contributed.) Assistants listed dozens of fields of expertise, which included Family Tree Maker, Obit Collection & Sharing Your Own Obits, Find-A-Grave website, Family Tree DNA, Courthouse Records, Censuses, African American Research, Louisiana, Getting Started, Charts, Military Records, and Brick Walls, among many others. They identified themselves as expert, intermediate and advanced level assistants. I know that several of the participants gained good insights and some got real answers. I do not know of anyone who left unhappy. It was truly a great day for family history and for life-long learning, in general.

Family History Assistance Days continued with the Association's regular meeting at the Randle T. Moore Center on April 13. A Show and Tell program was presented in which members discussed photographs, documents and artifacts which they had brought, and told of personal experiences in family research. Resident experts made themselves available once again for anyone who had problems or questions concerning his or her research.

On April 20, Family History Days crossed the Red River to take up residence at the Bossier Parish History Center. Phil Adderley discussed the generation of genealogical knowledge in "Possibly ... Probably ... Really, What Basic Steps Turn 'Findings' into 'Evidence'?" Pam Carlisle, Local History and Public Outreach Specialist, BPHC, spoke of the many resources available at the History Center in "Discover Genealogical Treasures at the Bossier Parish Historical Center." Ms. Carlisle and Ms. Ann Middleton, Director BPHC, expressed their gratitude that the genealogical clubs had chosen to meet at the History Center and encouraged us to come back for future events.

Family History Assistance Days succeeded as an educational outreach to the general public, and as a development of our several groups' individual members' interests. In addition, these events showed the power of cooperation between the Ark-La-Tex Genealogical Association, the Friends of Genealogy and Gencom. None of us could have done so well without the help of the others. A third victory was the gain in exposure of the genealogical community that was made by expanding our educational efforts to the new hosting site in Bossier City.

Phil Adderley proposed this joint effort and the choice of the Bossier Parish History Center as an additional venue. He is to be commended for his foresight, his leadership, his diligence and his energy. He brought us all together and really made the Family History Assistance Days happen. All of the education committee and the several volunteers from all three organizations also deserve the sincere gratitude of the genealogical community. These gifts they give really have no end.

The spring has been good for family history in the Ark-La-Tex. The programs for this summer look promising, as well. In June, Don Weathersby will present "Memories and Tales of Shreveport and Bossier City's Past." In July, Phil Adderley will discuss "Mary was Bessie's Grandmother and also her Mother! How Do You Handle Conflicting Evidence?"

On August 10, John Sellers will speak at the Ark-La-Tex Genealogical Association's annual seminar. Jim Johnson is spearheading the planning of this our largest project of the year as he has for many years. Look for information concerning the August seminar in this issue of the Genie. Seating is limited, so I recommend early registration. I will see you, there.

Sincerely,

Reed Mathews
2nd Vice President



ALTGA's Horn-Book: "Wildcard Search Strategies: Ancestry.com's U. S. Census Collection"

ALTGA General Session of 9 March 2013

© 2013, Philip Burnett Adderley, CGsm

I have lost count the number of times someone told me they could not find a particular person in a federal census in a particular locality, and yet the enumerator had no difficulty listing her or him in the expected place. More often than not, these sought-for persons will surface with patience.

*It helps to understand *why* you will not always find your person before you *try.**

The more sophisticated websites that filter and display census images use advanced search engine techniques.¹ They do so because of the reasons *why* one has difficulty finding their ancestor.

- First the name you search may not be the name the person was known by in that timeframe. A few reasons:
 - The person giving the information was not always the head of household nor did it have to be.
 - The informant may have had imperfect knowledge of the household's makeup, including the actual names by which they were known: surname or given name or both.
 - The person giving the information may have had a reason to distort the truth.
 - The sought-for person changed his or her surname, legally or not.
- Second, what an informant said may not be what the enumerator thought s/he heard.
 - Cultural, ethnic, and social differences distorted the transfer of verbal information.
 - Even people who spoke the same language could be led astray by a different dialect.
- Third, after the enumerator recorded the information but before the indexer saw it for the first time, *at least one instance of re-processing* may have occurred.² Each cycle of reprocessing can add errors.
 - The census information may have been recopied before it was sent to Washington City. For 1790 through 1870 censuses, at least one and sometimes two handwritten copies were made. In most instances, and in particular 1850-1870, a handwritten copy went to Washington.³

sm CG or Certified Genealogist are service marks of the Board for Certification of Genealogists, used under license by Board-certified associates after periodic competency evaluations, and the board name is registered in the US Patent & Trademark Office.

¹ Ancestry.com's census collection is used as the base for this discussion, but the author could easily have used a number of other full featured web services offering advanced search strategies for federal census images.

² Kathleen Hinckley, *Your Guide to the Federal Census* (Cincinnati, Ohio: Betterway Books, 2002), especially Chapter 5, "Census Media: Handwritten to Electronic," pages 108-119. This chapter is must reading for all researchers using federal censuses.

³ *Ibid.*, 108-110.

- About 1/3 of the schedules from 1790 through 1910 reportedly were targeted for recopying due to water damage from a 1921 fire. For example, all forty eight states and the Indian Territory schedules of 1900 were water-damaged. Whether it happened or not has not been proven, but the author has personally seen a sheet from Caddo Parish's 1900 population schedule in which the entire three columns of birthplaces were all recorded beautifully at about the same time with "Louisiana," but compelling evidence to the contrary existed.
- The 1910 census was poorly microfilmed, making accurate indexes a wishful proposition.⁴ Any person indexing the entries before late 20th century advances in image processing occurred was fortunate if s/he held a legible film copy.
- Censuses for 1850-1870 were re-filmed, but not before time faded some of the original schedules.⁵
- Fourth, what an enumerator or copyist wrote was not always what the indexer thought s/he saw, so the person indexing the entries created errors in the names that finally made their way into the index database. Some examples:
 - The indexer misread the script using his or her own knowledge of present-day penmanship and was not familiar with the handwriting of the period.
 - The indexer was using a poorly legible medium or a medium that was a second or third generation reprocessed version.
- Fifth, the indexer may have interpreted the visible letters correctly but at the point of entry tapped the wrong key or keys.

Fortunately for us, there are tools available to help us find our persons of interest in Ancestry.com's U. S. Census Collection. Notice a preference for the term "collection," since Ancestry.com has made it possible to choose alternate types of image processing for the original images it holds.

The first and most important tool is the wildcard feature that can be used in place of one or more letters when entering information into the census search fields. *Ancestry.com* succinctly identifies on the "Census Search Secrets" webpage how to use them with respect to name variants:

An asterisk () matches zero or more characters and a question mark matches exactly one character. Last year wildcard functionality was improved so that now the first letter can now be a wildcard. The only restrictions are that a) either the first or last character must be a non-wildcard character and b) names must contain at least three non-wildcard characters.*

⁴ Ibid., 117.

⁵ Ibid., 118.

This is a great tool. Just how to start putting them to good use, though, is another matter. Here are a few thoughts to help:

1. Prefer * to represent syllables in multi-syllabic names or places.
 - a. Use one * in place of all vowels strung together within a syllable.
 - b. Of the "expected" consonants in a name,
 - i. Use only one letter of any double consonant
 - ii. Use the most prominent lower case letter in a consonant string, giving preference to a consonant having an upper stem or loop, or one that loops or projects below the writing baseline. Why? Of the twenty-six lower case cursive letters in an English alphabet, half have no upper stems or lower projections, and they can easily be misread. Of the remainder, six have upper stems (*bdhhllz*); six have downward projections below the writing baseline (*gjffqgy*), with "z" more dependent upon the penmanship system in use; and one (*f*) has both. The numbers of letters in each category vary with the language in use. Lower case stems, loops, or projections have one thing in common—the pressure pattern used to create them typically extends well into those portions of the stems or loops that the writer makes when *pulling* the pen toward his wrist. For right-handed writers, this typically occurs on the down stroke of the loop or stem; for left handed writers, the upward stroke of the loop or stem may be more pronounced. In either case the compressed pressure pattern occurs on at least one part of the stroke, making the character stand out somewhat. Taking the sought-after expected surname *Schaeffer* as an example, the *h* and the *f* are my lower case keys. My first wild card attempt will hold onto the S, h, and f, looking like this: "S*h*f* . If I get too many hits I might add a trailing r: S*h*f*r or better, S*h*f*r* . Examine these variations yourself using the 1850 federal census in Orleans Parish. Then experiment with *h*f*r* .
 - iii. For words having lower case letters with no stems or projections exceeding the nominal height of a vowel, examine the cursive examples in the actual records for the locality in question, then choose those consonants that can be easily distinguished from the others. They are likely to be captured by the 20th century indexer with fewer misreads than some of the other letters.
 - c. Consider varying the number of syllables if prior variations above *fail to help*.
 - i. For consonant strings of two or more consecutive consonants, consider adding a syllable by inserting an asterisk between each two consecutive consonants.. Since * can represent zero characters, the instances in which they appear as consecutive consonants will still pass through the filter.

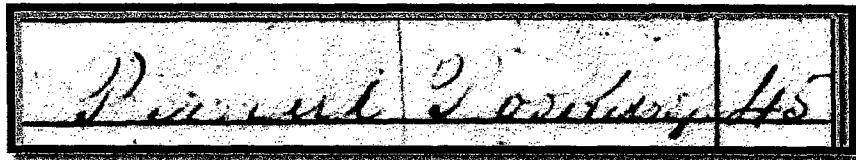
- ii. For long "expected" names, consider dropping a syllable that might have been poorly pronounced or weakly heard, perhaps attributable to slurred speech or imperfectly heard dialects. For all practical purposes these syllables may have been virtually "silent" when spoken, so an enumerator may have recorded the phonetic result with one less syllable.
2. The wildcard "?" has less utility, but it may come in handy with short one- or two-syllable names or places that have four or more expected letters.⁶ The "?" may also be helpful in reducing the number of hits previously filtered using an "*" wildcard search.

After you spend some time with the "Census Search Secrets" webpage (get there via the Learning Center), you are ready to take a deeper step. Access Ancestry's online version of this reference: Loretto Dennis Szucs, FUGA, and Matthew Wright, "Census Records," in Loretto Dennis Szucs and Sandra Luebking, editors, *The Source, A Guidebook to American Genealogy*, 3rd ed. (Provo, Utah: MyFamily.com, Inc., 2006). Of vital interest to me over years of using Ancestry are two tables:⁷

- Phonetic Substitutes,⁸ and
- Frequently Misread Letters⁹

Copy these tables for your own use. Begin systematically substituting candidates from either table when you are not successful using wildcards within the "expected" surname. Even if you start using substitutes, however, do not abandon your wildcard strategies. It is remarkable how effective this can be in capturing unusual index entries that turn out to be the folks you seek. If I had done this for one of my targets, Bernard Brochtrup, I would have found the household, indexed as "Poenard Pookdrop," much quicker years ago.

The Pookdrop (aka moral) of this story, however, is that there is always a tried and true last resort: finding candidate households the old fashioned way by a line-by-line reading of the census district.



⁶ For three letter names, the researcher cannot use a wildcard in *Ancestry.com's* U. S. Census Collection, because of the search engine's minimum 3-letter requirement.

⁷ The path to get to these tables via Internet is a torturous exercise. It appears here in case other links appearing in the endnotes break after the date of this writing. First from the Learning Center on the Home page click on "Family History Wiki" in the Learning Center's drop down menu. The upper right quadrant of that webpage reads, "Explore the Wiki," under which click on "The Source: ..." In the Contents frame click on "The Source Online," then "Census Records." On the far right side of the webpage is a tall box labeled, "The United States Federal Census ... This Article is part of a series." Find and click on "Census Indexes and Finding Aids." In the subsequent Contents frame, click "History and Quality of Census Indexes." In the fourth paragraph you will see two links called "Phonetic Substitutes" and "List of Frequently Misread Letters." Those holding the 3rd edition in book form can find the tables on pages 187-8.

⁸ The hyperlink to this table today is: http://www.ancestry.com/wiki/index.php?title=List_of_Phonetic_Substitutes .

⁹ The hyperlink is today: http://www.ancestry.com/wiki/index.php?title=List_of_Frequently_Misread_Letters .



Genealogical Seminar

Presented by
Ark-La-Tex Genealogical Association

Saturday August 10, 2013

(Registration begins at 8:00am)

Speaker

John Sellers

John A. Sellers is a fifth generation native to Hopkins County, Texas and resides in Sulphur Springs. He is a graduate of Texas Tech University and has a teaching certificate in history from Texas A & M University. He has been doing genealogical research for over 25 years. He has served fifteen years on the executive board of the Hopkins County Genealogical Society including serving as vice president and president. He has lectured at national genealogical conferences as well as over 50 state and local seminars across the South. He has also been the featured speaker at the Daughters of the Republic of Texas Genealogical conferences held at the Alamo and has lectured at the Institute of Genealogical and Historical Research at Samford University. Mr. Sellers is a faculty member at Angelina College Genealogy Conference in Lufkin.

Seminar Location

Broadmoor United Methodist Church – Pearce Activity Hall
3715 Youree Drive, Shreveport, La (Parking lot is on Albany Ave)

Opening Remarks: 8:50am / Lectures: 9:00am - 3:30pm

- **Women, That Gender You Can't Do Without in Your Research**
- **Researching Your Ancestor's Plot of Dirt: The Adventures of Courthouse Land Research**
- **Researching Newspapers in Cyberspace**
- **Your Ancestors Own Cousins and Their Value to Your Research**

Cost of Seminar --- \$40.00 --- Includes lunch if registration received by August 5, 2013
Seating limit: 75 For information call Jim Johnson (318) 746-1851 or Email jjohnson747@suddenlink.net
Website: www.rootsweb.ancestry.com/~laaltga/ or Google 'Ark La Tex Genealogy'

----- (cut here) -----

To Register: Make your check payable to Ark-La-Tex Genealogical Association. Mail with this form to:
Ark-La-Tex Genealogical Assn Seminar P.O. Box 4463, Shreveport, La 71134-0463

Please PRINT the names of registrants (including surnames being researched) separately for each person attending.

Name _____ Email _____

Address: _____ Phone _____

City: _____ State: _____ Zip _____

List 4 surnames you are researching. If received prior to Aug 5, 2013, your surnames will be included in the seminar handout.

1. _____ 2. _____ 3. _____ 4. _____

HUGHES SPUR AND ALDEN BRIDGE Bossier Parish Louisiana

By Dale Jennings

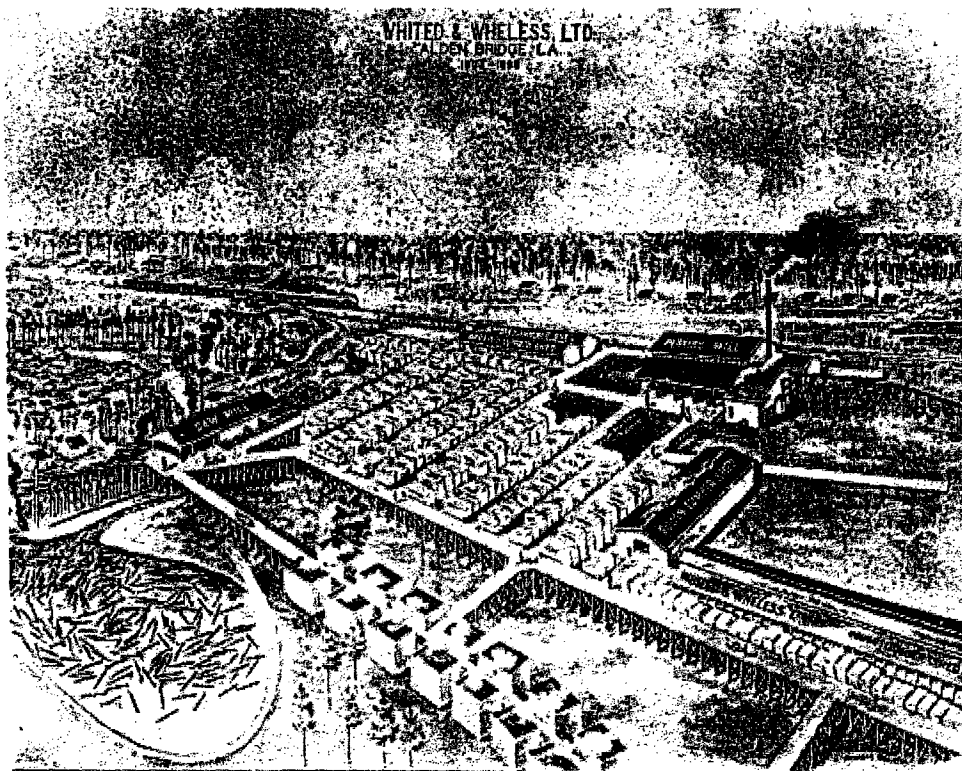
An undated "birds-eye-view" picture of Alden Bridge shows the large Whited & Wheless sawmill and its mill pond (see illustration). The town extends south from the mill site, on both sides of the Cotton Belt track. Of the numerous buildings shown, only the company store and hotel are identified. A church and the Sprott store building with its store front are also discernible. The large building just south of the Sprott store is almost certainly the school. The large two-story structure south of the hotel is probably the lodge hall, said to have doubled as a dance hall. All the structures named except the company store and church are on the west side of the track. The Bodcau Valley railroad track is seen running from the Cotton Belt past the primary "saw mill" building out to the timber. The Bodcau Valley Railway Company was chartered by F. T. Whited, H. H. Wheless and four associates on May 9, 1904.

Messrs Whited and Wheless both resided with their large families at the Alden Bridge mill site for a part of its existence. One of the Wheless daughters, Elizabeth Wheless Owens, would later describe Alden Bridge as a communal village of peace and contentment. She fondly remembered its July 4th barbeque picnics, company baseball competitions and dances. She wrote, "You'll never meet anyone who had ever lived there at Alden Bridge who didn't have a special place in their heart for it."

In December 1908, Whited & Wheless merged with the Frost-Johnson Lumber Company. Mr. F. T. Whited became vice president and director of Frost-Johnson while remaining president of Whited & Wheless. All of the plant's personal property (as opposed to real property) was sold by Whited & Wheless to Frost-Johnson for \$50,000 of that company's stock. The stock was distributed to the Whited & Wheless stockholders. Whited & Wheless retained its real estate consisting of the Alden Bridge mill and town site and its timber tracts – excluding the timber. All of the land was leased back to the mill operations. Personal property included the mill's machinery, electric light plant, machine & black smith shop, residences, tenement houses, hotel building, water works, dry kilns, two steam boilers, logging equipment, cattle, mules, wagons, mill pond, ice house, the store building with its stock of goods, and a large inventory of lumber.

The little sawmill town of Alden Bridge continued to thrive until about 1912. The company's great stands of first growth yellow pine timber had in effect become depleted. The much used adage, "cut out and get out," applied to

the Alden mill, and it was closed down. In April 1913, Mr. Whited's company sold its more than 30,000 acres in Bossier Parish to E. K. Smith, Trustee, for \$138,680, or \$4.58 per acre (Mr. Wheless had died the previous year). This included the mill and town site. It was stipulated in the conveyance document (Book 32, Page 227) that the Frost-Johnson Lumber Company would have two years to remove "all houses, machinery, railroad material and other effects pertaining to the operation of the Alden Bridge Mill plant." In September the Whited & Wheless officers met at Alden Bridge and passed a resolution to dissolve the company, sell off all remaining property and distribute the proceeds to the stockholders (Book 32, Page 362).



The caption on a reproduction of the Alden Bridge mill over-view picture states that it had hung in the mill office of Mr. H. H. Wheless until 1913, when the company moved away and the building was demolished. Also, that Mr. Lonnie S. Neblett showed so much interest in the painting that it was given to him at that time. Enough remnant of the rural Alden Bridge community remained to support its post office and no doubt initially its store.

In January 1917, Mr. E. K. Smith, Trustee for Whited & Wheless, sold the mill's great cut over timber tracts to Caddo Central Oil & Refining Company "for \$100 and other good and valuable considerations." The region's premier industries of banking, mercantile, planting and timber had been joined by another – oil and

gas. These enterprises were largely Shreveport based and often interconnected through stock ownership or other legal alliances. While petroleum was being extracted from under the ground, the relatively fast growing southern pine was replenishing itself on the surface.

The 1920 census enumerator in his January visit would have seen a great change in the Alden Bridge community since the last survey. While previously populated by the town's mill personnel, railroad employees and supporting occupations, the area was now sparsely occupied by farmers and farm workers. Irvin Elder gave his occupation as farmer.

On May 20, 1920, the editor of the *Bossier Banner* reported that H. J. (Jeff) Rivers had stopped by the *Banner* office with the news that "...the Weaver & Rivers sawmill now being put in at Alden Bridge (Whited & Wheless old site) will perhaps not be under way of operation before July 1st." He said that its equipment would include twin boilers, engine and planer, all sufficient for production of 35,000 feet of lumber daily (only a little more than half that of Whited & Wheless). A standard gauge railway line was being constructed eastward that would pierce a number of Weaver & Rivers Lumber Company tracts. The railroad would have two good locomotives and upward of thirty log cars. Mr. Rivers said that he and his associates were to open a store at Alden Bridge and carry a stock valued at \$12,000 to \$15,000. The company had just been formed by Samuel P. Weaver and Henry J. Rivers. The Alden Bridge sawmill and its mill town were rebuilt, only on a smaller scale than under Whited & Wheless.

The region between Cypress Bayou and Bodcau Bayou and beyond was experiencing a resurgence in timber production. A shifting of lumber company partnership combinations occurred between 1914 and the late 1920's. They included Weaver-Hearne, Weaver Brothers, Weaver Brothers and Looney and in 1920, Weaver & Rivers. The Weaver & Rivers Lumber Company operated the Alden Bridge mill in alliance with the Caddo Central Oil & Refining Company until 1926. That year Caddo Central sold the old Whited-Wheless 31,000 timber tract acreage to the Crystal Oil Refining Corporation. Crystal continued a leasing arrangement with Weaver & Rivers.

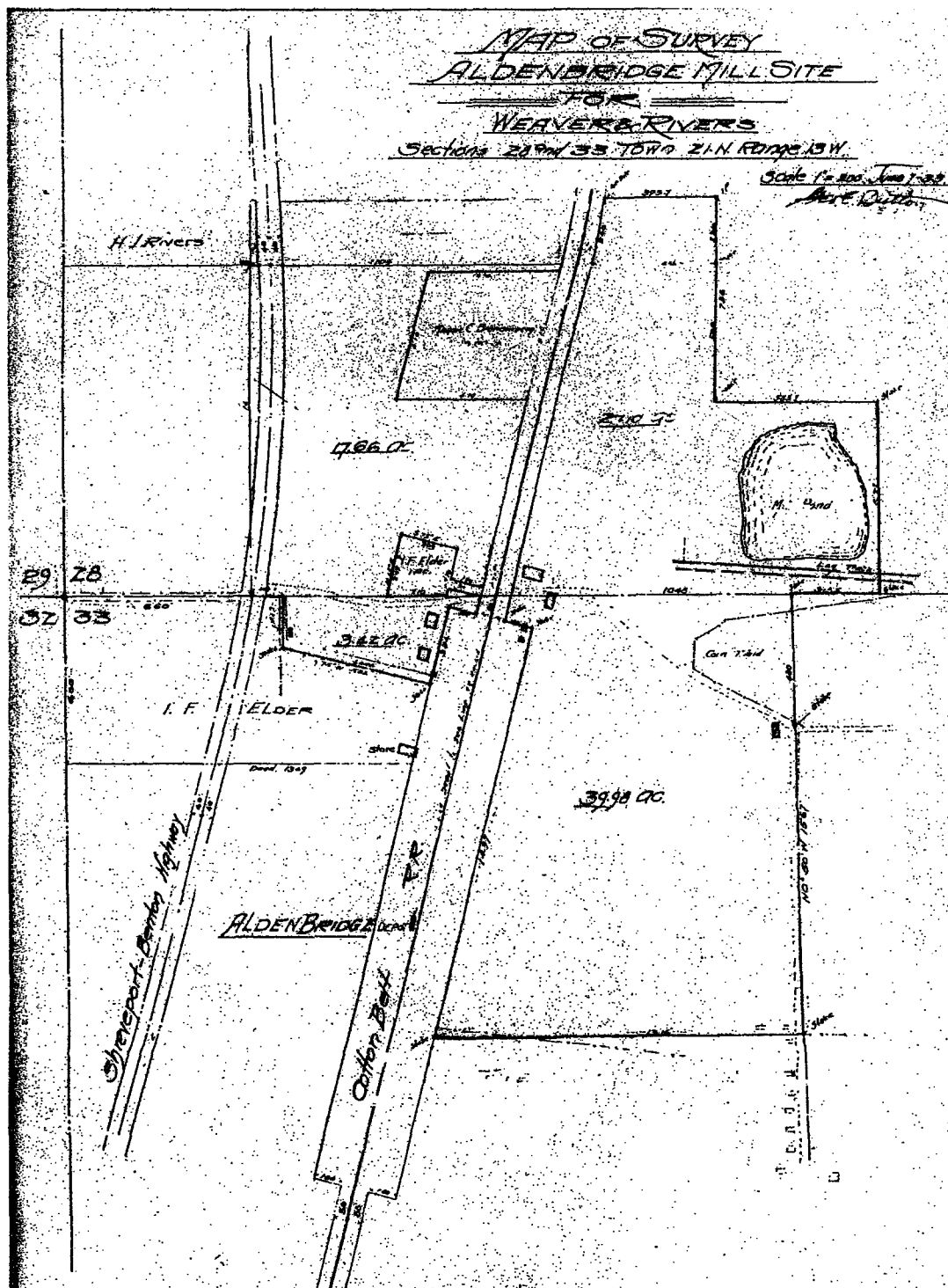
In late 1927, brothers S. P. and T. L. Weaver, Frank W. Looney and Jeff Rivers incorporated to form the WELORI Lumber Company (an acronym of the first two letters of each name). They consolidated their Weaver Brothers & Looney and Weaver & Rivers holdings (less the Crystal oil lease) and issued stock to themselves and other stockholders. WELORI Lumber continued to acquire many more tens of thousands of acres of timber, mainly through timber leases. They acquired many dozens of tracts in the year 1928.

Mr. Clark Strayhan described the Alden Bridge of the mid-to-late 1920's during his boyhood, "prior to Highway 3." He recalled that Mr. Weaver and Mr. Looney came to Alden sometimes, but that Mr. Jeff Rivers was the mill operator and lived there in a fine home with his wife Grace and their three children. The number two man was Mr. J. A. Dunnam. The Dunnams lived right at the commissary (company store), in which he had his office. He oversaw the payroll, billing and all facets of the company's bookkeeping. This "amazing" commissary and the ice house were right next to the railroad siding. Clark said that his father's meat market and Uncle Isaac Hoffpauir's barbershop were next to Doctor J. B. Hall's office. Dr. John B. Hall, the "Company Doctor," also attended patients in the wider area and was driven by his black chauffeur, Jesse Myles. (The company doctors under Whited & Wheless Company were consecutively Drs Callaway, Scales and Henderson.) Clark said that his Uncle George Nattin supplied wagons and mules to the company, and after his death his widow Eva opened a boarding house that was heavily patronized by the workers.

Strayhan remembered that the town had a one room schoolhouse and separate churches for the black and white residents – all built by the company. He stated that there were several hundred hands employed at the mill and most (white and black) lived in town. (This would have included the timber crew laborers, most of whom may have lived in barrack style "tenement houses.") He wrote that some families, especially the supervisory personnel, worked at the mill for all the years it was at Alden. Some of the "regulars" were as follows: The Moses, Foleys, Seabaughs, Scarboroughs, Joiners, Nebletts, Martins, Sellars, Nattins, Dyers, Stanfords, Nettles and Ryans.

Alden Bridge's decline would begin with the 1929 stock market crash and ensuing Great Depression of the 1930's, but the WELORI Lumber Company would survive. According to Strayhan, the mill continued its operations (on a smaller scale and perhaps with temporary closures) until the early 1940's. The 1930 census still showed eighty households for the "Village of Alden Bridge." Many were black farmers and others who owned their own homes on its periphery. The census listed many of the same families named earlier. Several members were foremen of the various phases of mill operations. Lonnie Neblett was the "planer foreman." Also included were engineers and others with railroad occupations. Herbert L. Galligly was the railroad station agent. J. Graham Swindle (grandson of John J. Swindle, Sr.) operated a service station and his mother Mattie was a store clerk. Roy Seabaugh was a plant foreman and Watty (?) Seabaugh was a teacher. Irvin F. Elder was once again a "merchant general store." Gone were the Dunnams, Hoffpauirs and Strayhans.

In 1933, WELORI Lumber Company purchased ninety-four acres in Sections 28 and 33 from Crystal Oil that included the mill and mill town site (Book 112, Page 98). The conveyance survey map shows by the dwindling of structures that Alden Bridge's second heyday was fast drawing to a close.

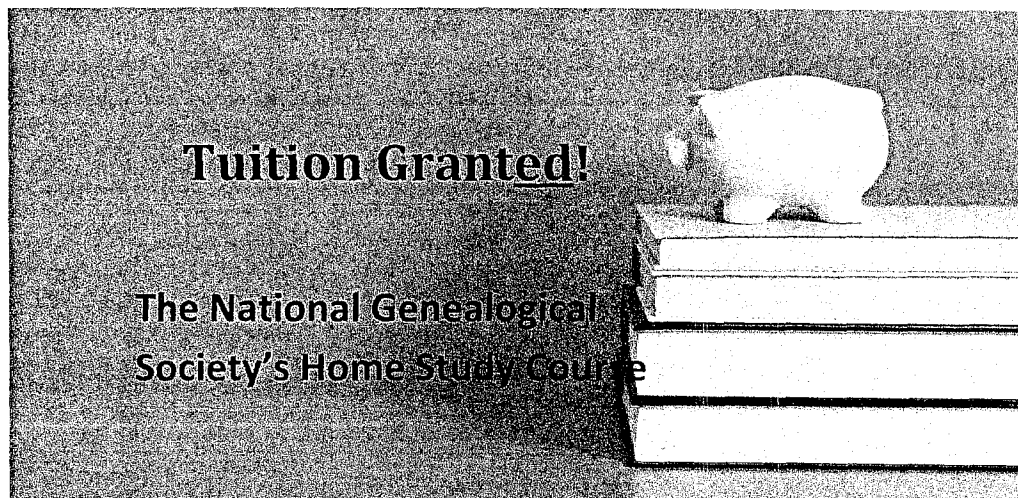


Clark said that during the last decade or so of the mill's existence the post office was located in the commissary. Mr. Elder had evidently moved the postal operation from his store to the WELORI commissary where he worked for the company. Vagie H. Rivers, son of Jeff Rivers, superseded Elder as postmaster on June 8, 1937. The Alden Bridge post office was closed on December 31, 1942, quite possibly the closing date of the mill. Clark said that his father, Hugh Strayhan, kept the commissary store open for the company for several years after the mill "cut out." Quite a few of the workers at the mill had bought land and built permanent homes in the vicinity. As transportation improved, the little country stores couldn't compete with those in the city. Like many others, this one too would close due to lack of trade. The depot was soon discontinued as well. Over time people moved away from the community, and the Alden Bridge site went back to timber. An "Alden Bridge" sign at the Cotton Belt track crossing, the concrete foundation of the commissary, the mill pond and some rubble and scrap from the sawmill are about all that remains of old Alden Bridge.

Alden Bridge's namesake, Philo Alden, was the Bossier Parish sheriff during the Civil War and early post-Civil War days. He died on November 6, 1866, as a result of an accident caused by his mule taking fright while he was mounting and throwing him against a post. Samuel Zeigler, the inspiration for Alden Bridge, returned to his native South Carolina, broken financially, in spirit and in health. He died there on February 20, 1928, spared the experience of the financial crash of 1929, brought on by reckless practices of the under regulated Wall Street and big banks. Irvin Elder died at age seventy-nine on November 20, 1939. Grandson Sam Elder, Jr. of Orlando, Florida, and other family members, still own the old Irvin Elder store tract at the Alden Bridge town site.



Irvin Fletcher Elder



Your Board is pleased to announce Linda Lynn as the recipient of a tuition grant for the **Home Study Course** administered by the **National Genealogical Society (NGS)**. The course is aimed principally at intermediate and advanced researchers.

Linda was selected by the Education Committee by lottery. Her grant pays for her registration and course materials, which includes graded feedback from a variety of experts as she progresses through the course. Most candidates spend one to three years completing the course.

Access the National Genealogical Society's website for more information:

www.ngsgenealogy.org/cs/homestudy_course_cd

The following persons have been added
To the Ark-La-Tex Genealogical Association Membership List

Beran, Bonnie

1804 Andy Circle, Bossier City, LA 71112-9709

Names Researching: Blakeley, Blackburn, Arrington and Hall

Gresens, Leonard

317 College Lane, Shreveport, LA 71106-1203

Names Researching: Gresens and Messina

Kyle, Ellen T.

2456 Churchill Drive, Bossier City, LA 71111-5558

Names Researching: Teer, Kyle, Mims and Strickland

Genealogy

By Donna Sutton

[From Bienville Democrat, Arcadia, LA, Thursday, 12 Aug 1999]

[Note: "Genealogy" by Donna Sutton was a weekly column of genealogy with emphasis on Bienville Parish and surrounding area. Appeared in the Bienville Democrat, Ringgold Progress and Arcadia Progress. Donna B. Sutton, born on June 2, 1922, died on January 7, 2010, family history photos and genealogy at AncientFaces.]

The **African-American Genealogical Research Institute** (AAGRI), PO Box 637, Matteson, IL 60443-6370 (Phone: 1-708-758-5747), is the only organization in the world that is a not-for-profit library/archives/ repository dedicated to African-American genealogy. Founded by Lori Husband [aagri@twne.com], the AAGRI collects and preserves materials for genealogical research, and publishes a quarterly newsletter that contains abstracts of data from old records.

AAGRI projects include:

- National surname index
- Vital records collection
- Master name database
- Funeral program collection
- High school and college yearbook collection
- 5-generation chart rally
- Photo drive
- Directories project
- Collection of publications for on-site researchers
- Genealogy workshops

Contact **AAGRI** for more information, for a free flyer, or to be placed on their mailing list.

Southern Roots, 11620 Audelia, Suite 122, Dallas, TX 75243-5675 (Phone 1-214-221-0180 or fax 1-214-221-0185) has recently published **Sumter County, Alabama, Wills: 1828-1872, Morality Schedules: 1850-1880** (hardcover, 429 pages, \$34.95 + \$4.00 shipping) by Gwendolyn Lynette Hester, Ed.D., a college professor in Dallas. This reference book begins with a history of Sumter County, an explanation of the value of the use of Sumter County wills and mortality schedules and a list of sources consulted. The author presents detailed abstracts of the contents of Will Book I - 1828-1851, then gives a facsimile of federal mortality data for the years 1850, 1860, 1870, and 1880.

Article Submitted by Sonja Webb

PERIODICAL EXCHANGE REVIEW

Compiled by Glenda Efferson Bernard

The Ark-La-Tex Genealogical Association is part of an exchange program with other genealogical societies across the nation. The idea is to obtain newsletters and bulletins from these various societies in exchange for a copy of "The Genie." This very successful endeavor benefits genealogists who visit the Broadmoor Branch of the Shreve Memorial Library in Shreveport, Louisiana. The items discussed in this article, along with many others, are found on magazine racks to one's right upon entering the Genealogy Department.

The purpose of this article is to acquaint the reader with several publications which may be of interest in research. Generally speaking, one can find more data about the person of interest if research is covered in his locale before searching nationwide. For example, regional articles may provide an early church roster with just the name needed while a magazine showcased to reach statewide readers may not include such detail.

Numerous exchange copies have been deposited recently into the library's collection. Some interesting ones include:

Stalkin' Kin in Old West Texas, May 2013, Vol. 40, Nos. 3 &4, 246 pages, is a huge publication by the San Angelo Genealogical and Historical Society, San Angelo, Texas. This particular volume celebrates 40 years of genealogy in the Concho Valley. History of the organization is highlighted with various family biographies of ancestors of members of the society. Some of these surnames include Schlegel, Kerbs, Squyres, Keith, and Peltzer. A lengthy letter from E. Eugene Peltzer to a friend in the German homeland, 1852, describes his day to day life in rich detail. Abstracts from the San Angelo *Standard* include advertisements and business news as well as births, visits to the community and county court records. Transcriptions of Reagan County Marriage Records; Tom Green County, Texas, District Court, Civil Court Docket and Criminal Court Docket; Runnels County Marriage Records, Book 4 and Menard County Marriage Records round out the volume. If you have an ancestor in this south Texas area, this may be a great resource for you.

Kinfolks, May 2013, Volume 37 No. 2, is published by the Southwest Louisiana Genealogical Society, Inc. What a gem! This smaller presentation highlights the Acadian area of Louisiana in the Lake Charles area and

includes a terrific article by William Dollarhide, "Getting Started in Deed Research."

The Lepretre Papers is an interesting article about the life of Issac Lepretre, an American World War I soldier. A one page look into Calcasieu Parish in 1880 is a good description of the area at that time. "Genealogical Gleanings from Abstract #88300, Cypress Ridge Subdivision" lists and discusses sales of lots in this plot of land. Three very sharp and detailed plats illustrate this property which is basically within the late 1800 time frame. A continuing transcription of the Lake Charles, Louisiana City Directory, 1911-1912, and a listing of tombstone readings in St. Eugene Cemetery, Grand Chenier, LA, is a part of this 40 page bulletin.

Valley Leaves, Volume 47, Issues 3-4, Spring 2013, 75 pages, is a quarterly prepared by the Tennessee Valley Genealogical Society which is in North Alabama. This volume is divided into articles arranged by counties. Jackson County shows about 25 pages of select abstracted 1915 Probate Records. Madison County, specifically Maple Hill area, includes "Death Certificates of White People Buried in Maple Hill Cemetery 1908-1916, (Last Names beginning with "S".)" Several pages involving Madison County include abstracts from several probate packets. Deed and Record Books from Marshall County are about 10 pages of abstracted probate records. Of special interest to this writer is a listing near the back of the volume which makes the reader aware of major articles in past volumes of the publication -"A Synopsis of the Original Records Published in Valley Leaves." Persons may purchase older volumes if the list inspires more research.

Hopkins County Heritage, Volume 30, Number 1, March 2013, 27 pages, concentrating on the Sulphur Springs, Texas, area, is presented by the Hopkins County Genealogical Society. A "List of WWI Soldiers" begins this smaller publication. Also "Newspaper News Items From The Sulphur Springs Gazette, January 5, 1906" shares many local bits and pieces along with numerous pictures of school classes and teachers. "Montgomerys, Hookers and Wickers in Hopkins County, Texas," highlights these three families which also include very clear pictures. Snippets such as pet parades, doll shows and the opening of College State Park close this publication.

Yell County Historical and Genealogical Association Bulletin, Volume 38, No. 1, 2013, 48 pages, is a substantial publication. Mildred Maning Watson's "Before Plainview was a Town," is a great article about the farming

area in the late 1870s. Ms. Watson discusses the establishment of the town and life there in its earliest days. Two wonderful pictures depicting some of these "pioneers" are attached to the article. "Descendants of Thomas Brannon" is a chart of the family from the birth of Thomas in 1862 in Ireland as well as several family pictures. Numerous family group sheets from local families are included along with the descendant chart of Joel Walker, Sr.

St. Louis Genealogical Society Quarterly published by the St. Louis Genealogical Society, Winter, 2012-2013, 30 pages, includes a highlighted article, "Meat on the Bones, Using Digitized Newspapers to Add Persons to Born, Married, Died." This article adds a list of possible newspapers to search. Also, many examples of how one can find genealogical data from newspapers is explained. This wonderfully rich article is written by a St. Louis researcher for 30+years. Another in-depth article by the same author as above, Viki Fagyal is "Not all Your Relatives Were Angels! Using Coroners' Records, Criminal Court Records, and Penitentiary Records to Validate a newspaper Drama." This is a great follow-up to her newspaper submission above. She goes to great lengths to demonstrate her prints with copies of court records to illustrate her main points. Ms. Fagyal's thirteen page article concludes with 71 endnotes!

Our Heritage by the San Antonio Genealogical and Historical Society, Vol. 54, #1 & 2, Fall and Winter, 2012-13, 96 pages, is a very large publication. Two long family research stories: the Kuentz and Cowles families along with an elaborate bibliography can be read along with a shorter description of the Gregg family. An additional description of the Flickinger family of Ohio is included. Primarily the newsletter showcases the 200th Anniversary of the War of 1812 and details "Researching your War of 1812 Volunteer Soldier." Information is given as to how to order the War of 1812 records from the National Archives. An interesting article with extensive endnotes is "A Family Divided by the Civil War." It describes an unusual family situation regarding the Maltsberger clan. "James Alexander Reynolds (1836-1927), Confederate Veteran, Carpenter/Home Builder" is a short biography of a true Texas war hero, which also provides rich endnotes. This large volume ends with the "Lunatic Index, Commissioners Court Dec. 12, 1861- Dec. 11, 1890, Book 2-A, 3-A; A, B, C, D, E, F. These records of Bexar County were scanned showing various occupations and the names of individuals who may have been part of lunatic proceedings---sheriff, state asylum authorities, attorneys, etc.

New Genealogy Books at Broadmoor Library

[Note: These new additions to the library feature the states of Georgia, Maryland, Texas, South Carolina, Virginia and New Jersey.]

Submitted by Sonja D. Webb

Abbe, Mary Hoit (transcriber) & Clark-Oconee Genealogical Society. Clarke County Georgia Tax Digests 1811-1820. Athens, Georgia: McNaughton-Gunn, Inc., 2005.

Abbe, Mary Hoit (transcriber) & Clark-Oconee Genealogical Society. Clarke County Georgia Tax Digests 1821-1830. Athens, Georgia: McNaughton-Gunn, Inc., 2006.

Abbe, Mary Hoit (transcriber) & Clark-Oconee Genealogical Society. Clarke County Georgia Tax Digests 1847-1850. Athens, Georgia: McNaughton-Gunn, Inc., 2004.

Baltimore County Genealogical Society. Tombstone Inscriptions of Govans Presbyterian Church Cemetery. Westminster, Md: Willow Bend Books, 2001.

Bunch, Betty Sue Dunaway & Larry Raymond Butler. Lincoln County Cemeteries. Lincolnton, Georgia: 1999.

Campbell, Davine V. & William R. Henry. Land Records of Houston County, Georgia 1836-1840, Deed Book G, Special District & Land Lot Maps, Special Listing Lottery Grantees. Warner Robins, Georgia: Central Georgia Genealogical Society, Inc., 1994.

Campbell, Davine V. & William R. Henry. Land Records of Macon County, Georgia 1857-1863 Deed Book A, Volume 1. Warner Robins, Georgia: Central Georgia Genealogical Society, Inc., 1994.

Campbell, Davine V. 1838 Tax Digest For Macon County, Georgia. Warner Robins, Georgia: Central Georgia Genealogical Society, Inc., 1993.

Campbell, Davine V. 1850 Federal Census of Macon County, Georgia (Population Schedule). Warner Robins, Georgia: Central Georgia Genealogical Society, Inc., 1993.

Campbell, Davine V. 1852 Tax Digest For Macon County, Georgia. Warner Robins, Georgia: Central Georgia Genealogical Society, Inc., 1989.

Cavey, Kathleen Tull-Burton. Tombstones and Beyond Prospect U.M. Church Cemetery and Marvin Chapel Church Cemetery (includes Jacob M. Holdcraft's Field Records and Caretakers Records). Westminster, Maryland: Willow Bend Books, 2000.

Clark-Oconee Genealogical Society. Oconee County Georgia Marriage Records 1875-1920, book A, B, C, D, O (partial). Athens, Georgia: McNaughton & Gunn, Inc., 2002.

Crook, Betty Ross, Abstractor. Falls County, Texas Divorce Records, 1906 to 1945. Waco, Texas: Central Texas Genealogical Society, Inc., 2010.

Crook, Betty Ross, Abstractor. Houston County, Texas, Newspaper Abstracts 1890-1901, Volume 1 from *The Crockett Courier*, January 31, 1890 through December 25, 1895. Waco, Texas: Central Texas Genealogical Society, Inc., 2002.

Crook, Betty Ross, Abstractor. Houston County, Texas, Newspaper Abstracts 1890-1901, Volume 2 from *The Crockett Courier* January 3, 1896 through January 25, 1901. Waco, Texas: Central Texas Genealogical Society, Inc., 2006.

Crook, Betty Ross, Abstractor. McLennan County, Texas, Tax Roll for 1890. Waco, Texas: Central Texas Genealogical Society, Inc., 2006.

Frain, Elizabeth R. Monocacy Cemetery Beallsville, Montgomery County, Maryland. Lovettsville, Va.: Willow Bend Books, 2001

Hay, Guelda L. & Millie C. Stewart & Davine V. Campbell. Cemeteries of Macon County, Georgia 1836-1994. Warner Robins, Georgia: Central Georgia Genealogical Society, Inc., 1995.

Hughes, Kathy, Project Chair. Boykins Funeral Home Records Abstract. Waco, Texas: Central Texas Genealogical Society, Inc., 2005

Lucas, Gloria Ramsey. Slave Records of Edgefield County, South Carolina. Edgefield, S.C.: Edgefield County Historical Society, 2010.

Mangum, Robert R., The Katy Cards Personal Cards of the Warden Shop Missouri-Kansas-Texas Railroad Bellmead, Texas 1920s, 1930s, and 1940s. Waco, Texas: Central Texas Genealogical Society, Inc., 2006.

McNeill, Constance Timmerman, ed. Edgefield County, SC Family Cemeteries & Death Notices From the SC Baptist Newspaper. Edgefield, S.C.: Old Edgefield District Genealogical Society, 2009.

McRee, Fred W. Oconee County Georgia Abstracts of Wills. Dahlonega, Georgia: Fred W. McRee, Jr., 2002.

McRee, Fred W., Oconee County Georgia Deaths 1880-1944. Dahlonega, Georgia: Fred W. McRee, Jr., 2007.

Peden, Jr., Henry C. Colonial Tavern Keepers of Maryland and Delaware. Bel Air, Maryland: Colonial Roots, 2012. Flagon and Trencher Society descendants of colonial Tavern Keepers

Royston, Donald R. & Mary L, Compilers. Green Hill Cemetery Tombstones and Burials Berryville, Clarke County, Virginia. Athens, Georgia: New Papyrus Publishing, 2009.

Toothman, Rick. Monongalia County, West Virginia, Deedbook Records, 1784-1810(Old Series Volumes 1-4). Westminster, Maryland: Heritage Books, Inc., 2008.

Toothman, Rick. Pendelton County West Virginia, Deed Book Records, 1788-1813. Westminster, Maryland: Heritage Books, Inc., 2007.

Toothman, Rick. Pendelton County West Virginia Probate Records: Wills, 1788-1846; Inventories, Sale Bills, Settlements, 1788-1846. Westminster, Maryland: Heritage Books, Inc., 2007.

Whatley, Dick. Big Stephen's Creek Baptist Church Minutes June and July 1803 & May 1805 thru December 1817. Old Edgefield District, S.C.: Old Edgefield District Genealogical society, 2002.

Wheeler, William Ogden & Edmund D. Halsey. Inscriptions on the Tomb Stones and Monuments in the Grave Yards at Whippany and Hanover, Morris County, NJ. 1894. Lambertville, N.J: Hunterdon House, 1984.

Wheeler, William Ogden & Edmund D. Halsey. Inscriptions on Tombstones and Monuments in the Burying Grounds of the First Presbyterian Church and St. John's Church at Elizabeth, New Jersey, 1664---1892. Westminster, Maryland: Heritage Books, Inc., 2010.

*Shreve Memorial Library
Broadmoor (Resource Center) Branch
Genealogy Department
1212 Captain Shreve Drive, Shreveport, LA 71105
Phone: 318.869.0120*

CHERRY HILL NO. 2 MISSIONARY BAPTIST CHURCH CEMETERY

©2013 by Isabelle M. Woods

THIS CEMETERY IS AT FRONT AND SIDE OF THE CHERRY HILL NO. 2 MISSIONARY
BAPTIST CHURCH, 11471 GREEN LANE, MER ROUGE, LOUISIANA.

THE GENIE

Second Quarter 2013

75

ID	NAME (Last, First, Middle)	PRE/SUFFIX	BIRTHDATE	DEATHDATE	INSCRIPTION/NOTES
21	ADAMS, MINNIE DUMAS		04 JUL 1897	09 JAN 1986	FP: PARENTS-MR. & MRS. ALICE AND CHARLES DUMAS
29	ADAMS, ROOSEVELT		07 JAN 1921	02 MAR 1993	FP: PARENTS-MR. & MRS. MINNIE (DUMAS) AND CHARLIE ADAMS
270	BAILEY, ALFRED "NOOK"		04 OCT 1931	02 NOV 2008	F N, BASTROP (LA) ENTERPRISE DTD 06 NOV 2008
134	BAILEY, CHRISTINE		22 JAN 1960	26 MAR 1997	FP: PARENTS-MR. & MRS. ROSE AND A. F. "NOOK" BAILEY
162	BAILEY, CLEMENTINE "SNOOTY"		30 MAR 1903	22 MAR 2005	GRANDMOTHER OF CHRISTINE BAILEY
40	BAILEY, ROSIE M.		02 MAR 1933	10 OCT 2005	OBITUARY, BASTROP (LA) ENTERPRISE DTD 13 OCT 2005
135	BAILEY, SAMUEL		28 APR 1886	14 MAY 1969	
75	BAKÉR, ARISH		1914	18 APR 1992	OBITUARY, BASTROP (LA) ENTERPRISE DTD 21 APR 1992
47	BARNETT, FRANK		07 SEP 1910	18 FEB 1965	
238	BELGON, NELLIE	MRS.		08 AUG 1980	OBITUARY, BASTROP (LA) ENTERPRISE DTD 11 AUG 1980
222	BELL, QUEENIE "LITTLE MAMA" E.		10 JAN 1912	26 MAY 2007	FP: PARENTS-MR. & MRS. CLASSIE AND JIM BELL
169	BETHEA, ERNEST JAMES		29 DEC 1910	04 JAN 1986	FP: PARENTS-ROSIE LEE SANDERS AND PETTY WAY BETHEA
279	BONNER, ALESHIA LESHAY	INFANT		21 JAN 1998	FUNERAL NOTICE, NEWS-STAR (MONROE, LA) DTD 24 JAN 1998
261	BONNER, ALEX			24 AUG 1992	OBITUARY, BASTROP (LA) ENTERPRISE DTD 28 AUG 1992
160	BONNER, BIRTHA		1916	06 JAN 2006	F N, BASTROP (LA) ENTERPRISE DTD 13 JAN 2006
219	BONNER, BULAH				UNDATED FUNERAL PROGRAM
68	BONNER, EUGENE "SON"		20 MAR 1907	11 NOV 1990	FP: PARENTS-MR. & MRS. BEULAH (SMITH) AND ALBERT BONNER
170	BONNER, MARY AGNES		01 JUL 1904	20 JAN 1992	FP: PARENTS-MR. & MRS. EMMA AND JIM McCLINTON
267	BRADLEY, LEORA WILSON	MRS.		11 MAY 1988	OBITUARY, BASTROP (LA) ENTERPRISE DTD 20 MAY 1988
247	BRANDON, EDDIE LEE	(MRS.)		1997	OBITUARY, BASTROP (LA) ENTERPRISE DTD 14 APR 1997
36	BRANDON, LILLIE MAE	MRS.	27 SEP 1924	10 FEB 1996	OBITUARY, BASTROP (LA) ENTERPRISE DTD 15 FEB 1996
136	BRANDY, LE EPSIE HAYS	MRS.	10 AUG 1955	29 SEP 1984	WIFE & MOTHER. OBITUARY, BASTROP (LA) ENTERPRISE DTD 03 OCT 1984
44	BRILEY, ELLA J.	SISTER	15 OCT 1879	08 AUG 1949	MOTHER
45	BRILEY, RICHARD		1868	1958	HUSBAND OF OLLIE MAE BRILEY
77	BROOKS, ESLEAN WILLIAMS	MRS.	12 MAR 1916	06 MAR 1994	FS: MAMA. FP: PARENTS-M/M JANE (JOHNSON) & ANDREW WILLIAMS
217	BROOKS, FRANK		10 OCT 1924	29 NOV 2006	
76	BROOKS, WALKER		25 DEC 1912	12 SEP 1963	FS: DADDY
273	BROOKS, WALTER LEE	JR.		1997	FUNERAL NOTICE, NEWS-STAR (MONROE, LA) DTD 10 NOV 1997

CHERRY HILL NO. 2 MISSIONARY BAPTIST CHURCH CEMETERY

©2013 by Isabelle M. Woods

THIS CEMETERY IS AT FRONT AND SIDE OF THE CHERRY HILL NO. 2 MISSIONARY
BAPTIST CHURCH, 11471 GREEN LANE, MER ROUGE, LOUISIANA.

THE GENIE

Second Quarter 2013

76

ID	NAME (Last, First, Middle)	PRE/SUFFIX	BIRTH DATE	DEATH DATE	INSCRIPTION/NOTES
19	DUMAS, MITTIE ANN		12 FEB 1906	15 AUG 1983	
175	DUNCAN, PINKY	MRS.	25 JUN 1883	27 MAY 1972	EXACT DATES FROM FUNERAL PROGRAM
62	ELLIS, VERDEIS		28 JUL 1925	03 JUN 1955	MISSOURI PFC CO B 868 ENGR AVN BN WORLD WAR II
176	ERVIN, PARALEE		11 OCT 1893	08 FEB 1980	FP: NEPHEWS-MCGHEE SYLVESTER AND JOHN HENRY SYLVESTER.
254	ERVIN, VERNER LEE "CHARLIE"			27 MAY 1988	OBITUARY, BASTROP (LA) ENTERPRISE DTD 1 JUN 1988
78	FALLS, LITLO DANIEL	(MRS.)	27 APR 1918	26 JAN 1974	FP: PARENTS-SELOME & MOSE DANIELS; SP- DARNELL FALLS
72	FIELD, JOHNNIE		19 NOV 1920	22 SEP 1988	PFC US ARMY WORLD WAR II
248	FLEMING, PEARLINE	MRS.		25 JAN 1994	OBITUARY, BASTROP (LA) ENTERPRISE DTD 28 JAN 1994
15	FLEMING, SMITTY		12 MAY 1904	20 JUL 1976	FP: SP-PEARLINE; DTRS-LORENE (FLEMING) BROWN & ANNE LUE FLEMING
16	FLEMMING, SHEDONNIA LATRICE		11 AUG 1966	29 JUL 1978	FP: PARENTS-MS. LORENE FLEMING AND STERLING RAY HALL
60	FOSTER, DEALIE		MAY 1880	15 NOV 1941	MOTHER
179	GEORGE, EVA		28 SEP 1924	APR 1987	FP DTD 28 APR 1987: PARENTS-MR. & MRS. NARASSIE R. AND PERCY DOKES
132	GEORGE, ROOSEVELT		22 AUG 1922	17 OCT 1977	FP: WIFE-EVA DOKES GEORGE; CH-BRENDA & MR.WILLIE JEAN GEORGE
272	GIBSON, EZELL			14 JAN 2008	FUNERAL NOTICE, BASTROP (LA) ENTERPRISE DTD 21 & 22 JAN 2008
260	GIBSON, FRANK "GIP"		15 FEB 1950	20 JUL 2003	F N, BASTROP (LA) ENTERPRISE DTD 23, 24 & 25 JUL 2003
288	GIBSON, JAMES	JR.		30 SEP 2010	F N, BASTROP (LA) ENTERPRISE DTD 08 OCT 2010
255	GIBSON, JAMES		15 JUN 1905	20 JUL 1997	OBITUARY, BASTROP (LA) ENTERPRISE DTD 24 JUL 1997
274	GIBSON, JESSIE			09 MAY 2006	F N, BASTROP (LA) ENTERPRISE DTD 12 MAY 2006
125	GILBERT, HELEN L.		11 JUL 1940	24 APR 1966 ?	
74	GOSBY, RANSOM		24 JUN 1881	01 MAR 1977	FP: 4 CHILDREN; FATHER-FEGGINS GOSBY, BROTHER-SWEET GOSBY
271	GREEN, BOBBIE JEAN			11 JUL 2008	FUNERAL NOTICE, BASTROP (LA) ENTERPRISE DTD 16 & 17 JUL 2008
269	GREEN, OLLIE		22 FEB 1920	12 APR 2004	FUNERAL NOTICE, BASTROP (LA) ENTERPRISE DTD 15 APR 2004
117	GREEN, VERA LEE		31 DEC 1924	22 JAN 1990	FP: DATES; PARENTS-MR. & MRS. ADA (PITT) AND HILLARD GREEN
246	GRIMES, MILTON		12 AUG 1932	03 FEB 1977	OBITUARY, BASTROP (LA) ENTERPRISE DTD 10 FEB 1977
294	HALL, AUNDRAE		16 MAR 1998	28 JUL 2011	F N, BASTROP (LA) ENTERPRISE DTD 03 AUG 2011
257	HARLSTON, SHELLIE LEE	MRS.		24 JUL 1989	OBITUARY, BASTROP (LA) ENTERPRISE DTD 31 JUL 1989
106	HARRIS, ALBERT	BRO.	05 SEP 1929	21 DEC 1988	FP: PARENTS-MR. & MRS. MARY AND LEE HARRIS; SP-MATTIE LEE; 8 CH
98	HAY, IONA BROUGHTON	(MRS.)	08 MAR 1901	07 FEB 1993	FP: PA-WILLIAM HENRY BROUGHTON/SP-TOBBIE TERRELL HAYES (HAY)

CHERRY HILL NO. 2 MISSIONARY BAPTIST CHURCH CEMETERY

©2013 by Isabelle M. Woods

THIS CEMETERY IS AT FRONT AND SIDE OF THE CHERRY HILL NO. 2 MISSIONARY
BAPTIST CHURCH, 11471 GREEN LANE, MER ROUGE, LOUISIANA.

ID	NAME (Last, First, Middle)	PRE/SUFFIX	BIRTHDATE	DEATHDATE	INSCRIPTION/NOTES
96	HAY, JIMMY SMITH		28 JUL 1874	29 AUG 1948	
144	HAY, LUCY WATT		1911	1963	MOTHER
237	HAY, SADIE MEADORS	MRS.		26 FEB 1981	OBITUARY, BASTROP (LA) ENTERPRISE DTD 27 FEB 1981
71	HAY, THELMA J. P.		29 JUN 1948	04 SEP 1974	
97	HAY, TOBBIE TERRELL (DOC)		10 JUL 1904	15 APR 1987	FP: HUSBAND OF IONA BROUGHTON HAYES (HAY)
218	HAYES, EARLIE		25 JULY 1934	01 FEB 2006	OBITUARY, BASTROP (LA) ENTERPRISE DTD 3 FEB 2006
95	HAYES, HORACE		27 AUG 1930	28 SEP 1952	LOUISIANA PFC US MARINE CORPS KOREA PH
276	HAYNES, LOLA			02 MAY 2009	F N, NEWS-STAR (MONROE, LA) DTD 7 MAY 2009
181	HAYS, JEANNA		17 NOV 1902	25 FEB 1987	FP: FATHER-FARMER LEOPOLD/ TWO BROTHERS--A. P. & HENRY LEOPOLD
142	HAYS, LEROY		29 OCT 1930	07 JUL 1957	
141	HAYS, RHOD R.		05 MAY 1907	09 MAY 1977	US ARMY. FP: FATHER-CLUB HAYS; WIFE-LEE EPSIE BROUGHTON HAYS
256	HAYS, WINNIE B.	MRS.	25 MAR 1932	16 FEB 2007	FP: PARENTS-MR. & MRS. VELMA AND MINION JOHNSON
268	HERNANDEZ, MARY JONES			1996	OBITUARY, BASTROP (LA) ENTERPRISE DTD 2 APR 1996
73	HERRON, ERMA (ERMIA) WHITE		4 JUL 1903	31 DEC 1989	MOTHER. FP: PARENTS-NEALIE BANKS AND EDDIE WHITE, SR.
124	HOLMES, AIMLLIAR		01 JAN 1926	09 MAR 1973	
56	HOLMES, HATTIE		1865	1924	
182	HOLMES, HERMAN		06 JUL 1913	22 APR 1979	FP: PARENTS-MR. & MRS. ARNELLA AND WILLIAM HOLMES
57	HOLMES, S. H.		1839	1924	FOOTSTONE (FS): S. H. H.
229	HOLMES, SARAH		12 DEC 1918	27 OCT 1985	OBITUARY, BASTROP (LA) ENTERPRISE DTD 2 NOV 1985
292	HUBBARD, MARTHA LEE COLEMAN			11 SEP 2010	F N, NEWS-STAR (MONROE, LA) DTD 17 SEP 2010, P6A, C4
231	HUNTER, EMMA	MRS.		04 JUN 1984	OBITUARY, BASTROP (LA) ENTERPRISE DTD 11 JUN 1984
126	HUNTER, LEE		31 DEC 1892	06 SEP 1966	ARKANSAS PVT 162 DEPOT BRIG WORLD WAR I
183	HUNTER, PLAS		14 JAN 1929	04 NOV 1975	FP: PARENTS-MR. & MRS. BESSIE AND SQUARE HUNTER
164	JACKSON, AIMETT W.	MRS.	01 JUL 1924	20 FEB 2006	FUNERAL NOTICE, BASTROP (LA) ENTERPRISE DTD 23 FEB 2006
2	JACKSON, ALBERTA (SIMMONS)	MRS.	03 FEB 1937	16 MAR 1996	FP: PARS-VERNICE KEITHLEY & WESLEY SIMMONS
26	JACKSON, ANNA		24 AUG 1887	21 JUL 1979	MOTHER AND GRANDMOTHER
27	JACKSON, BURRELL		1907	1985	OBITUARY, BASTROP (LA) ENTERPRISE DTD 27 NOV 1985
236	JACKSON, CARRIE	MRS.	07 NOV 1882	1980	OBITUARY, BASTROP (LA) ENTERPRISE DTD 10 JUN 1980

CHERRY HILL NO. 2 MISSIONARY BAPTIST CHURCH CEMETERY

©2013 by Isabelle M. Woods

THIS CEMETERY IS AT FRONT AND SIDE OF THE CHERRY HILL NO. 2 MISSIONARY
BAPTIST CHURCH, 11471 GREEN LANE, MER ROUGE, LOUISIANA.

THE GENIE

Second Quarter 2013

78

ID	NAME (Last, First, Middle)	PRE/SUFFIX	BIRTHDATE	DEATHDATE	INSCRIPTION/NOTES
264	JACKSON, DAVID LEE			31 MAR 1990	OBITUARY, BASTROP (LA) ENTERPRISE DTD 5 APR 1990
1	JACKSON, EUGENE	JR. II		PRE-1996	HUSBAND OF MRS. ALBERTA (SIMMONS) JACKSON
277	JACKSON, EUGENE		03 SEP 1964	11 FEB 2009	FUNERAL NOTICE, NEWS-STAR (MONROE, LA) DTD 18 FEB 2009
245	JACKSON, IVORY			07 MAR 1985	OBITUARY, BASTROP (LA) ENTERPRISE DTD 13 MAR 1985
275	JACKSON, LEOTRA			08 MAY 2006	FUNERAL NOTICE, NEWS-STAR (MONROE, LA) DTD 11 MAY 2006
28	JACKSON, MARY MAGALINE		1903	30 JUN 2002	FUNERAL NOTICE BASTROP (LA) ENTERPRISE DTD 5 JUL 2002
180	JACKSON, SAMUEL			19 DEC 2004	FUNERAL NOTICE, NEWS-STAR (MONROE, LA) DTD 28 DEC 2004
166	JAMES, JOHN E.	SR.	28 AUG 1933	28 MAR 2002	PVT US MARINE CORPS KOREA
239	JENKINS, BEAULAH	MRS.		11 JUL 1982	OBITUARY, BASTROP (LA) ENTERPRISE DTD 12 JUL 1982
251	JENKINS, CHARLEY		06 JUN 1909	14 DEC 1952	F N, BASTROP (LA) ENTERPRISE DTD 4 JAN 1953
107	JENKINS, DOROTHY (JEAN) LEE	MRS.	11 AUG 1928	15 JUN 1985	OBITUARY, BASTROP (LA) ENTERPRISE DTD 21 JUN 1985
146	JENKINS, HENDERSON		1831	25 AUG 1942	NEWS ITEM, BASTROP (LA) ENTERPRISE DTD ?? AUG 1942
184	JENKINS, ICY		1887	1972	FP DTD 19 NOV 1972: FATHER-ENOCH MINNIEWEATHER/SP-ERNEST JENKINS
145	JENKINS, MARY LIZA		1886	1928	
93	JENKINS, VALERIE L. (LENOIR)		20 AUG 1930	11 FEB 1989	FP: PARENTS-M/M LUCILLE (JACKSON) & HAMP LENOIR; EXACT DOD & DOB
185	JOHNSON, ABTENE S.		30 OCT 1891	29 MAR 1977	FP: TWO SONS-McGEHEE SYLVESTER AND JOHN HENRY SYLVESTER
8	JOHNSON, ARTHUR		29 SEP 1912	13 OCT 2000	FP: DATES; PARENTS-MR./MRS. LULA (LOVETT) & NORMAN A. JOHNSON, SR
41	JOHNSON, BERNARD		15 JUL 1891	16 FEB 1955	
283	JOHNSON, EARLEAN	MRS.		07 MAR 1973	OBITUARY, BASTROP (LA) ENTERPRISE DTD 09 MAR 1973,P7,C8
13	JOHNSON, IVORY LEE		17 APR 1917	24 MAR 1999	OBITUARY, BASTROP (LA) ENTERPRISE DTD 30 MAR 1999
243	JOHNSON, JOE			26 SEP 1978	OBITUARY, BASTROP (LA) ENTERPRISE DTD 29 SEP 1978
253	JOHNSON, LANDIS			26 JUN 1991	OBITUARY, BASTROP (LA) ENTERPRISE DTD 2 JUL 1991
12	JOHNSON, LEE (ANDREW)	(JR.)	1963	01 APR 1991	OBITUARY, BASTROP (LA) ENTERPRISE DTD 02 & 04 APR 1991.
9	JOHNSON, LEE A.		26 JUL 1914	21 FEB 1976	
14	JOHNSON, LONNIE L.		14 JAN 1915	17 JAN 1986	HUSBAND AND FATHER. FP: EXACT DATES; FATHER-FRANK JOHNSON
159	JOHNSON, LOTTIE		16 NOV 1918	20 MAR 2003	
11	JOHNSON, LULA (LOUISE)		09 DEC 1893	25 NOV 1984	FP: DATES;MIDDLE NAME; PARS-MR. & MRS. LULA J. AND ROBERT LOVETT
10	JOHNSON, NORMAN (ALTON)	(JR.)	13 SEP 1918	10 FEB 1984	FP: DATES; PARENTS-MR./MRS. LULA (LOVETT) & NORMAN A. JOHNSON, SR.

CHERRY HILL NO. 2 MISSIONARY BAPTIST CHURCH CEMETERY

©2013 by Isabelle M. Woods

THIS CEMETERY IS AT FRONT AND SIDE OF THE CHERRY HILL NO. 2 MISSIONARY BAPTIST CHURCH, 11471 GREEN LANE, MER ROUGE, LOUISIANA.

THE GENIE

Second Quarter 2013

79

ID	NAME (Last, First, Middle)	PRE/SUFFIX	BIRTHDATE	DEATHDATE	INSCRIPTION/NOTES
108	JOHNSON, ORLANDIS		15 FEB 1918	26 JUN 1991	
53	JOHNSON, SUCKIE		01 JUL 1861	22 AUG 1929	FROM FP OF JANE J. WILLIAMS: MOTHER OF JANE J. WILLIAMS
143	JONES, ARTYE (MAE) HAYS		22 FEB 1932	18 JAN 1995	OBITUARY, BASTROP (LA) ENTERPRISE DTD 20 JAN 1995
186	JOSEPH, LOUELLA HAMILTON		26 AUG 1914	01 SEP 1994	FP: PARENTS-LEORA FINLEY WILSON AND RICHARD HAMMOND
130	KING, ALFRED		19 JUL 1903	22 JAN 1975	
128	KING, ALFRED S.	JR.	16 MAY 1927	26 AUG 1977	PFC US ARMY WORLD WAR II
167	KING, ARTIE (ARDIE) LEE		25 NOV 1912	17 MAY 1988	FP: PARENTS-EVA SMITH AND RICHARD BRILEY/SPOUSE-LANDERS KING
221	KING, BETTYE J. (JELLE)	(MRS.)	25 AUG 1959	02 JUN 2005	FP: PARENTS-FANNIE AND HANCE COLEMAN
278	KING, CATHERINE			19 OCT 2008	FUNERAL NOTICE, NEWS-STAR (MONROE, LA) DTD 24 OCT 2008
280	KING, EUGENE "BUDDY"			13 APR 1975	OBITUARY, BASTROP (LA) ENTERPRISE DTD 16 APR 1975
187	KING, MILL		09 FEB 1912	29 JAN 1993	FP: PARENTS-MR. & MRS. ELLA AND JAMES KING
58	KING, J. R.		10 MAR 1866	12 AUG 1905	FS: J. R. K.
163	KING, JAMES EDWARD		08 NOV 1927	24 AUG 1992	FP: PARENTS-MR. & MRS. BIRTHA (PAYNE) AND TRAVIS KING
265	KING, KAPRI C. L.	INFANT		21 JAN 1990	OBITUARY, BASTROP (LA) ENTERPRISE DTD 23 JAN 1990
165	KING, LANDERS		10 AUG 1907	16 NOV 1992	FP: PARENTS-MR. & MRS. ETTA SANDERS AND JAMES KING
289	KING, LARRY			09 OCT 2010	F-N, NEWS-STAR (MONROE, LA) DTD 14, 15 OCT 2010
129	KING, MALISSA		30 MAY 1891	07 JUN 1981	OBITUARY, BASTROP (LA) ENTERPRISE DTD 9 JUN 1981
157	KING, MARY ANN		1919	2003	FUNERAL NOTICE, BASTROP (LA) ENTERPRISE DTD 12 DEC 2003
82	KING, NATHANIEL		06 OCT 1912	11 SEP 1992	FP: DATES; SISTERS-OZETTA PERKINS AND MARY ANN KING
86	KING, NETTIE B.		29 DEC 1947	08 MAR 1997	FP: MOTHER-MARY ANN KING; SON-JONATHAN SAVALLE KING
85	KING, RICHARD ALLEN		22 MAY 1956	07 SEP 1981	FP: WIFE-DELORES, CH-ANTHONY, KIMBERLY ROCHELLE, AND RICHARD, JR.
37	LEDENT, ALISA Y. MOORE		26 APR 1967	13 DEC 1995	MOTHER. DUO W/ TIFFANY N. LEDENT. FP: PARS-BETTY & NELSON MOORE
38	LEDENT, TIFFANY N.		08 JUL 1988	13 DEC 1995	DAUGHTER. DUO W/ ALISA Y. LEDENT. FP: PARS-ALISA & JOSEPH LEDENT
290	LENOIR, ALBERTHA			23 DEC 2010	F N, BASTROP (LA) ENTERPRISE DTD 29 DEC 2010
91	LENOIR, EMANUEL		12 OCT 1933	10 MAY 1989	
92	LENOIR, EUGENE		29 MAR 1945	13 NOV 1969	LOUISIANA CPL INFANTRY VIETNAM BSM & OLC-PH. MOM-LUCILLE J. LENOIR
94	LENOIR, HAMP	SR.	02 SEP 1911	28 APR 1959	
90	LENOIR, JOHNNY		1951	1979	

CHERRY HILL NO. 2 MISSIONARY BAPTIST CHURCH CEMETERY

©2013 by Isabelle M. Woods

THIS CEMETERY IS AT FRONT AND SIDE OF THE CHERRY HILL NO. 2 MISSIONARY BAPTIST CHURCH, 11471 GREEN LANE, MER ROUGE, LOUISIANA.

THE GENIE

Second Quarter 2013

80

ID	NAME (Last-First-Middle)	PRE/SUFFIX	BIRTHDATE	DEATHDATE	INSCRIPTION/NOTES
89	LENORE, JOHN J.		25 AUG 1938	20 JUN 1985	SGT US ARMY VIETNAM
147	LEOPOLD, ANNIE J.		01 JAN 1900	05 AUG 1958	
148	LEOPOLD, IAM		01 MAY 1921	01 JAN 1987	FP: PARENTS-ANNIE (JENKINS) AND GOLDEN LEOPOLD
149	LEOPOLD, MATTIE BLUFORD	MRS.	12 FEB 1925	06 JUN 1999	OBITUARY, BASTROP (LA) ENTERPRISE DTD 10 JUN 1999
262	LEOPOLD, PECOLA "KITTY"			21 OCT 2008	FUNERAL NOTICE, NEWS-STAR (MONROE, LA) DTD 24 OCT 2008
101	LEOPOLD, PRECIOUS JEWEL		12 APR 1912	05 SEP 1916	
102	LEOPOLD, WILLIE		14 OCT 1887	07 JUN 1911	
263	LITTLE, JAY		18 JUL 1891	16 JUL 1987	OBITUARY, BASTROP (LA) ENTERPRISE DTD 18 JUL 1987
111	LYNCH, LOUISA WILSON		01 AUG 1909	11 SEP 1994	DUO W/ PRESTON LYNCH. FP: PARENTS-M/M ANNA AND FRANK WILSON
110	LYNCH, PRESTON		15 JAN 1903	16 JUN 1997	OBITUARY, BASTROP (LA) ENTERPRISE DTD 17 JUN 1997
188	MARTIN, LEE "BO JACK"		02 MAY 1902	29 SEP 1986	FP: PARENTS-CLARA BRITTON AND LEE MARTIN, SR.
189	MARTIN, LILLIE B.		28 MAR 1905	11 DEC 1984	FP: PARENTS-MR. & MRS. ELLA AND RICHARD BRILEY
131	MAYS, SADIE		12 FEB 1890	29 OCT 1976	HS DOB IS DEC 18, 1890. FP: FATHER-EDDIE SANDERS.
123	MCCLENDON, ELIZA B.		22 DEC 1891	06 MAR 1971	FP: SISTER-MRS. CAROLINE WHALEY/FP READS: "ELIZA McCLINTON"
228	MCCLINTON, GEORGE			18 DEC 1982	OBITUARY, BASTROP (LA) ENTERPRISE DTD 23 DEC 1982
191	MCCLINTON, LEE DANIEL		10 FEB 1952	21 DEC 1987	FP: PARENTS-MR. & MRS. OLLIE AND HENRY MCCLINTON
192	MCCLINTON, OLLIE BEE		25 OCT 1918	09 DEC 1995	FP: PARENTS-MR. & MRS. ELNORA AND VICTOR MITCHELL.
282	MCCLINTON, OTTO			06 OCT 2009	F N, NEWS-STAR (MONROE, LA) DTD 07 OCT 2009
99	MCCORMICK, HAL		02 JUL 1948	18 MAY 1988	SON
137	MCRIDDY, JANIE PAYNE		26 JUL 1915	25 OCT 1995	FP: PARENTS-MR. & MRS. KIZZIE (HOLEMAN) AND GEORGE PAYNE
59	MENWEATHERS, ENOCK		1859	1922	
241	MILO, CLARA			11 FEB 1984	OBITUARY, BASTROP (LA) ENTERPRISE DTD 17 FEB 1984
242	MINNIEWEATHER, ENOCH			22 MAR 1979	OBITUARY, BASTROP (LA) ENTERPRISE DTD 24 & 26 MAR 1979
233	MINNIEWEATHER, MATTIE	MRS.		27 OCT 1982	OBITUARY, BASTROP (LA) ENTERPRISE DTD 29 OCT 1982
51	MINNIEWEATHER, MINON		30 APR 1921	06 OCT 1972	
50	MINNIWEATHER, EMMER		27 MAR 1897	18 DEC 1963	
232	MONTGOMERY, ERNIE			13 DEC 1983	OBITUARY, BASTROP (LA) ENTERPRISE DTD 16 DEC 1983
177	MONTGOMERY, SYLVESTER			17 DEC 1972	OBITUARY, BASTROP (LA) ENTERPRISE DTD 20 DEC 1972

CHERRY HILL NO. 2 MISSIONARY BAPTIST CHURCH CEMETERY

©2013 by Isabelle M. Woods

THIS CEMETERY IS AT FRONT AND SIDE OF THE CHERRY HILL NO. 2 MISSIONARY
BAPTIST CHURCH, 11471 GREEN LANE, MER ROUGE, LOUISIANA.

THE GENIE

Second Quarter 2013

81

ID	NAME (Last, First, Middle)	PRE/SUFFIX	BIRTHDATE	DEATHDATE	INSCRIPTION/NOTES
193	MOORE, WILLIE EARL			01 APR 1973	FP: MOTHER-FAY MOORE; SONS-JERRY AND WILLIE MOORE
4	MORRIS, CAROLINE MARIE		18 DEC 1953	08 AUG 1997	
23	MOSS, GABE NED		11 MAR 1920	25 DEC 1990	S1 US NAVY WORLD WAR II
249	NICKERSON, HERBERT			12 JUN 1990	FUNERAL NOTICE, BASTROP (LA) ENTERPRISE DTD 14 JUN 1990
140	NICKERSON, LEROY		03 MAR 1908	08 DEC 1978	
49	NICKSON, LOVIE M. S.		12 JUL 1914	01 MAY 1981	OBITUARY, BASTROP (LA) ENTERPRISE DTD 8 MAY 1981
154	NOBLE, CHAS.		1903	1942	
210	NOBLE, IVY	(MRS.)	1903	1942	WIFE OF CHARLES NOBLE
69	ODOM, LOVIE W.		1886	18 OCT 1956	CHER. HILL NO. 2 B. CHURCH
114	PAYNE, CLARA		12 JUN 1884	22 JAN 1934	MOTHER. FS: C. P.
119	PAYNE, CLEM		20 OCT 1914	14 SEP 1993	DUO W/ REGINA PAYNE. FP: PARS-PARALEA JACKSON & WILLIE PAYNE
138	PAYNE, GEORGE		21 SEP 1888	15 JUN 1982	FP: FATHER-GEORGE PAYNE (SR.); WIFE-KIZZIE HOLMAN
285	PAYNE, GEORGE	JR.		30 NOV 2009	F N, NEWS-STAR (MONROE, LA) DTD 4 DEC 2009
286	PAYNE, MAGGIE	(MRS.)		13 MAR 2010	F N, NEWS-STAR (MONROE, LA) DTD 19 MAR 2010
118	PAYNE, REGINA		08 NOV 1910	29 APR 1998	DOUBLE WITH CLEM PAYNE (HUSBAND)
115	PAYNE, ROOSEVELT "SKINNER"		13 MAR 1911	10 NOV 2004	FUNERAL NOTICE, BASTROP (LA) ENTERPRISE DTD 17 NOV 2004
139	PAYNE, —SER		15 APR 1887	14 MAY 1972	
120	PAYNE, WILLIE LEE		18 AUG 1888	14 AUG 1978	FP: PARENTS-SYLVANIA WARD AND GEORGE PAYNE
105	PAYNE, ZERO		02 FEB 1893	18 MAR 1956	LOUISIANA-PVT 318 SERVICE BN QMC WORLD WAR I
104	PITTMAN, JUANITA DANIEL	MRS.	02 MAR 1925	15 JUN 2000	MOTHER. CHILDREN(?)—CLINTON, BURLAN & CAROLYN
133	RHONE, ISAAC		01 MAY 1915	11 DEC 1978	
250	RHONE, RUTHER	MRS.		21 SEP 1997	OBITUARY, BASTROP (LA) ENTERPRISE DTD 24 SEP 1997
194	ROBINSON, MAGGIE PAYNE		15 FEB 1912	10 JUN 1992	FP: PARENTS-KIZA HOLEMAN AND GEORGE PAYNE
224	RUCKER, GEORGE	SR.	02 SEP 1923	28 AUG 2006	FP: PARENTS-MR. & MRS. MARY AND HENRY RUCKER
281	RUCKER, LEATHA ANN		NOV 1881	14 JUL 1952	PARS-JACK HOLMAN AND ANNIE HAYNES
266	RUCKER, QUEENIE	MS.		24 AUG 1998	OBITUARY, BASTROP (LA) ENTERPRISE DTD 28 AUG 1998
84	SAVALL, ANNIE		06 JUL 1893	08 DEC 1968	FP: NIECES-MS. MARY ANN KING AND MRS. OZETTA PERKINS
42	SCOTT, C. L.	REV.	28 JUL 1899	23 DEC 1963	

CHERRY HILL NO. 2 MISSIONARY BAPTIST CHURCH CEMETERY

©2013 by Isabelle M. Woods

THIS CEMETERY IS AT FRONT AND SIDE OF THE CHERRY HILL NO. 2 MISSIONARY BAPTIST CHURCH, 11471 GREEN LANE, MER ROUGE, LOUISIANA.

THE GENIE

Second Quarter 2013

82

ID	NAME (Last, First, Middle)	PRE/SUFFIX	BIRTHDATE	DEATHDATE	INSCRIPTION/NOTES
43	SCOTT, ETHEL (LEE BROWN)	MRS.	13 JAN 1913	12 SEP 2002	FP: PARENTS-MATTIE MOORE AND JAMES BROWN
3	SIMMONS, LEE ROY		23 AUG 1952	12 MAR 1994	FP: MOTHER-MRS. ALBERTA SIMMONS JACKSON
225	SMITH, ETHEL BROOKS	SIS.	24 SEP 1943	20 APR 2007	FP: PARENTS-MR. & MRS. ESLEAN AND WALTER BROOKS, SR.
198	SMITH, GENNIE	MR.	7 APR 1890	21 JUN 1975	FP: SP-MRS. CATHERINE SMITH/SON-ROY SMITH.
197	SMITH, GERTIE		27 JUN 1895	28 SEP 1969	FP: ONE BROTHER-JASPER SMITH
5	SMITH, LEROY "POPS"		24 DEC 1920	26 APR 1999	PFC US MARINE CORPS WORLD WAR II
150	SMITH, MARCHILER DURANCE		10 MAR 1981	08 NOV 2003	"CHILL" MOM & ERIC
32	SPEARMAN, ROY (LEE)		06 MAY 1939	09 JAN 2001	FUNERAL NOTICE, BASTROP (LA) ENTERPRISE DTD 12 JAN 2001
30	SPEARMAN, VEATRICE A. LENARD		22 MAR 1918	01 OCT 1980	FP: PARENTS-MRS. ANNA (KILPATRICK) MORGAN AND ANDREW LENARD
31	SPEARMAN, WILLIE EUGENE		23 JUL 1916	27 NOV 1992	PFC US ARMY WORLD WAR II. FP: M/M CLARA B. AND JIM SPEARMAN
24	STEWART, JIMMY LAVON	SR.	19 FEB 1959	03 MAR 2003	OBITUARY, BASTROP (LA) ENTERPRISE DTD 6 MAR 2003
20	STEWART, NIKKI CHARLETTE		07 FEB 1983	13 OCT 1984	OBITUARY, BASTROP (LA) ENTERPRISE DTD 19 OCT 1984
230	STOKES, ROOSEVELT		01 JUL 1914	05 DEC 1984	OBITUARY, BASTROP (LA) ENTERPRISE DTD 06 DEC 1984
61	TAYLOR, ELIJAH (FP: "ELIGAH")		07 MAY 1893	06 NOV 1968	FP: 12 CH; SP-#1-FRANCES WILLIAMS (1922); #2-RUBY LEE ROBINSON (1964)
195	TAYLOR, FRANCIS WILLIAMS	MRS.	21 MAR 1902	22 FEB 1979	FP: PARENTS-MR. & MRS. JANE AND ANDREW WILLIAMS
63	TENNANT, THELMA (PAYNE)		1931	2004	FUNERAL NOTICE, BASTROP (LA) ENTERPRISE DTD 10 SEP 2004
33	THOMPSON, MARY ANNE	MRS.		10 SEP 1995	AGE 84. FUNERAL NOTICE, BASTROP (LA) ENTERPRISE DTD 15 SEP 1995
196	TIPPETT, IVY		20 MAR 1905	17 JAN 1989	FP: PARENTS-MR. & MRS. MERNVIA AND SOLMON TIPPETT
18	TIPPETT, OCTAVIA (DUMAS)		8 OCT 1904	20 MAR 1978	FP: PARENTS-MR. & MRS. ALICE AND CHARLIE DUMAS, SR.
226	VINEGAR, CLEOPHA T.	MRS.	06 OCT 1938	13 APR 2007	FP: PARENTS-VELMA MITCHELL AND BAILEY GREEN, SR.
7	VINEGAR, LENORAH	MR.	30 JAN 1923	29 OCT 2005	FUNERAL NOTICE BASTROP (LA) ENTERPRISE DTD 3 NOV 2005
55	WAFFORD, RAYMOND		10 FEB 1885	07 OCT 1961	
199	WALKER, MARY McGHIRE		1895	25 FEB 1987	FP: PARENTS-MR. & MRS. ELLEN AND CAPP McGHIRE
201	WALKER, WILLIAM	JR.	06 SEP 1905	08 SEP 1988	FP: PARENTS-MR. & MRS. LIZZIE AND WILLIAM WALKER, SR.
284	WARD, FLOOD			1971	F N, BASTROP (LA) ENTERPRISE DTD 23 AUG 1971, P9, C7
291	WASHINGTON, CATHERINE B.			2010	F N, BASTROP (LA) ENTERPRISE DTD 09 DEC 2010
227	WASHINGTON, MARY ANN DANIEL		05 JUL 1920	16 APR 2010	FP: PARENTS-MR. & MRS. SELONE AND MOSE DANIEL
235	WATSON, HATTIE	MRS.		01 AUG 1981	OBITUARY, BASTROP (LA) ENTERPRISE DTD 4 AUG 1981

CHERRY HILL NO. 2 MISSIONARY BAPTIST CHURCH CEMETERY

©2013 by Isabelle M. Woods

THIS CEMETERY IS AT FRONT AND SIDE OF THE CHERRY HILL NO. 2 MISSIONARY BAPTIST CHURCH, 11471 GREEN LANE, MER ROUGE, LOUISIANA.

THE GENIE

Second Quarter 2013

83

ID	NAME (Last, First, Middle)	PRE/SUFFIX	BIRTHDATE	DEATHDATE	INSCRIPTION/NOTES
168	WEBB, ALMEATER PAYNE	MRS.	07 SEP 1909	20 NOV 2003	MOTHER.MURLEAN/FRANKLIN/ WILLIE B./CLEOPHUS/ JOHN/ EDGAR/GEORGE
244	WHITE, AMOS			10 JUL 1984	OBITUARY, BASTROP (LA) ENTERPRISE DTD 13 JUL 1984
66	WHITE, CLARA	MRS.	17 APR 1911	14 APR 1997	FP: SPOUSE-AMOS WHITE; 9 CHILDREN
202	WHITE, EDDIE	JR.	20 MAR 1908	13 JULY 1985	FP: PARENTS-MR. & MRS. NEALIE AND EDDIE WHITE, SR.
64	WHITE, EDDIE	(SR.)	08 JAN 1870	05 APR 1971	FP: PA-NATHAN WHITE;CH-EDDIE, JR./MRS. ERMIA HERRON/ANNIE JOHNSON
203	WHITE, ERNEST		13 MAR 1947	17 OCT 1975	FP: PARENTS-MR. & MRS. NORA (LEWIS) AND GENIE WHITE
161	WHITE, MATTIE C. HOLMES		02 APR 1954	03 FEB 2000	FP: PARENTS-MATTIE HARRIS AND WILSON OWENS
65	WHITE, PERCY D.	JR.	15 MAR 1979	04 FEB 1984	
17	WHITE, ROOSEVELT		1960	1995	OBITUARY, BASTROP (LA) ENTERPRISE DTD 12 MAY 1995
208	WHITE, ROSA LEE (ROSALIE)		28 MAR 1949	26 FEB 2007	FP: PARENTS-M/M CLARA (CALVIN) AND AMOS WHITE
190	WHITE, ROSIE LENOIR		17 AUG 1941	05 NOV 1978	FP: PARENTS-MR. & MRS LUCILLE AND HAMP LENOIR, SR.
67	WHITE, WILLIE LEE		04 JAN 1945	22 JUN 1992	PFC US ARMY VIETNAM
155	WILLIAMS, BETTIE WALKER		08 MAR 1909	24 OCT 2003	DOUBLE WITH LEON "BUBBA" WILLIAMS
34	WILLIAMS, CHARLES		JUL 1912	01 JUL 1995	OBITUARY, BASTROP (LA) ENTERPRISE DTD 07 JUL 1995
54	WILLIAMS, DORA		28 FEB 1911	10 DEC 1987	FP: DATES; PARENTS: MR. & MRS. CHRISTINE AND FRANK SKATES
211	WILLIAMS, ELIZABETH	(MRS.)	15 MAR 1927	28 DEC 2002	FHM. FUNERAL NOTICE, BASTROP (LA) ENTERPRISE DTD 3 JAN 2003
48	WILLIAMS, FRANK		07 FEB 1912	07 NOV 1977	SGT US ARMY WORLD WAR II
83	WILLIAMS, GENNIE LEE		03 AUG 1918	30 APR 1994	FP READS: "QUEENIE LEE WILLIAMS"; PARS-M/M JANE & ANDREW JOHNSON
287	WILLIAMS, HERMAN			06 JUL 2010	F N, NEWS-STAR (MONROE, LA) DTD 09 JUL 2010
46	WILLIAMS, JANE J.	(MRS.)	20 MAY 1881	15 JUN 1971	FP: PARENTS-MRS. & MRS. SUCKIE (KING) AND FRANK JOHNSON
156	WILLIAMS, LEON "BUBBA"		04 AUG 1905	01 MAY 1988	DUO HS. OBITUARY, BASTROP (LA) ENTERPRISE DTD 5 MAY 1988
158	WILLIAMS, MARY EVELYN			16 FEB 2008?	75 YEARS
22	WILLIAMS, MINNIE BELL		16 FEB 1968	09 JUN 1986	OBITUARY, BASTROP (LA) ENTERPRISE DTD 12 JUN 1986
258	WILLIAMS, QUEENIE	MRS.		30 APR 1994	OBITUARY, BASTROP (LA) ENTERPRISE DTD 5 MAY 1994
204	WILLIAMS, WILLIE W.		05 NOV 1908	01 AUG 1995	OBITUARY, BASTROP (LA) ENTERPRISE DTD 4 AUG 1995
35	WILLS, ANNIE BELL		28 OCT 1928	05 FEB 1987	FP: PARENTS-MRS. NAZARETH LEOPOLD AND MR. TOM WALKER
259	WILSON, HENRY			2000	F N, BASTROP (LA) ENTERPRISE DTD 13 JUL 2000
153	WILSON, HUGH B.		01 SEP 1921	07 JUL 2000	PFC US ARMY WORLD WAR II

CHERRY HILL NO. 2 MISSIONARY BAPTIST CHURCH CEMETERY

©2013 by Isabelle M. Woods

THIS CEMETERY IS AT FRONT AND SIDE OF THE CHERRY HILL NO. 2 MISSIONARY BAPTIST CHURCH, 11471 GREEN LANE, MER ROUGE, LOUISIANA.

ID	NAME (Last, First, Middle)	PRE/SUFFIX	BIRTHDATE	DEATHDATE	INSCRIPTION/NOTES
293	WILSON, IDA JEAN		15 SEP 1942	05 JUL 2011	F N, BASTROP (LA) DAILY ENTERPRISE DTD 07 JUL 2011
116	WILSON, LEORA		01 JAN 1899	11 MAY 1988	FP: PARS-MR. & MRS. ELLA & DAVE FINLEY; SPOUSE-WILLIE WILSON
240	WOODS, CLARA B.	MRS.		13 SEP 1985	OBITUARY, BASTROP (LA) ENTERPRISE DTD 17 SEP 1985
	6 WORLEY, A. J.		28 DEC 1945	13 JUL 2005	SGT US ARMY VIETNAM
	81 WRIGHT, ELBERT		17 MAR 1914	07 JAN 1971	FP: WIFE-ROSA; DTR-MRS. ELBERTEENA CLARK OF SEATTLE, WA
	200 WRIGHT, ROSE ELLA DANIELS		04 DEC 1915	FEB 1999	FP: PARENTS-MR. & MRS. ELLA (LITTLE) AND EMERY DANIELS, SR.



CHERRY HILL NO. 2 MISSIONARY BAPTIST CHURCH
11471 GREEN LANE
MER ROUGE, MOREHOUSE PARISH, LOUISIANA

CHERRY HILL M. B. NO. 2
FOUNDED 1880 REBUILT 1986

REV. E. L. ODOM, SR., PASTOR

DEACONS

C. PAYNE, C. D. B.

J. BROUGHTON W. WILLIAMS

E. SPEARMAN R. LEOPOLD

R. COLEMAN M. BONNER

E. LENOIR R. PANE

J. BLAKELY, SEC.

M. W. PRINCE HALL GRAND LODGE
F & A. M. OF LOUISIANA

EARLE L. BRADFORD

M. W. GRAND MATER

JAN 17 A. D. 1993 A. L. 5993

Constable and Sheriff's Sale in Bienville Parish

[Note: Articles taken from: The Bienville Democrat, Arcadia, Bienville, Parish, LA. Thursday, April 10, 1919, Vol. 8, No. 3. Microfilm NO. 75. Bienville Democrat, Arcadia, LA, Apr. 3, 1999 – Dec. 30, 1920. Microforms and Media Services in Noel Memorial Library at LSU.]

Constable Sale

State of Louisiana. Parish of Bienville.
G.B. and W.J. **Smelley** vs. T.T. **Loe**
No. 25, Sixth Ward Justice Court.

Under and by virtue of a writ of execution issued out of the above named court and to me directed, I have seized and will **offer for sale** to the last and highest bidder for cash, with benefit of appraisal at the Dipping Vat, at Liberty Hill, LA, in Bienville Parish within legal sale house on **Saturday, April 19th, 1919** the following described property, to wit: One cow and calf, both red; one white heifer, three years old, and one black and white, one year old, marked crop and split in left, and split and underbit in right.

Seized as the property of **T.T. Low** and will be sold to satisfy said writ of execution and all cost.

This the 25th day of March, 1919. **I.R. Hays**, Constable.

Sheriff's Sale

State of Louisiana. Parish of Bienville

By virtue of, and pursuant to an order from Hon. **Fred J. Grace**, Register of the State Land Office, dated the 4th day of March, 1919, and in conformity with Act No. 55, of the Act of the General Assembly of 1912. **I WILL OFFER FOR SALE AND SELL AT PUBLIC AUCTION** at the principal door of the Court House of the Parish of Bienville at Arcadia, Louisiana on **Saturday, April 19th, 1919** between the hours of 11 o'clock a.m. and 4 o'clock p.m., to the last and highest bidder, the following described property to-wit: NW $\frac{1}{4}$ of NW $\frac{1}{4}$, Sec. 34, Tp. 16, R. 8.

Terms of Sale – Cash. For not less than one hundred and fifty dollars. **J.E. Currie**, Sheriff.

Baton Rouge, LA, March 4th, 1919.

Approved: **Fred J. Grace**, Register State Land Office.

Sheriff's Sale

State of Louisiana. Parish of Bienville

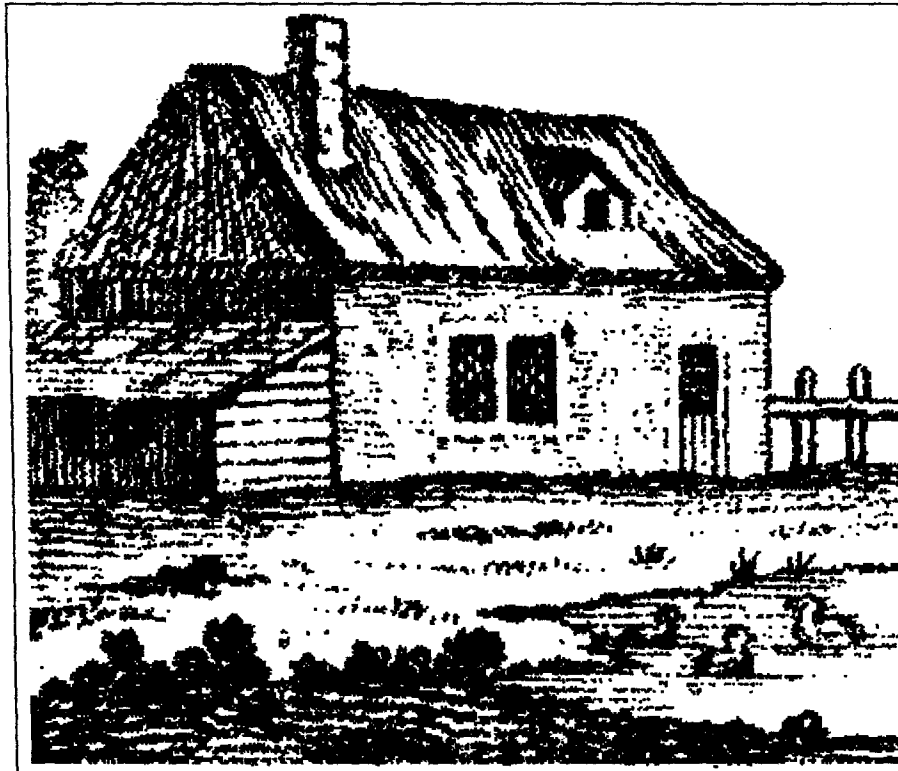
D.E. Brown, Jr., vs. John Alsworth

No. (?), Third Judicial District Court.

Under and by virtue of a writ of execution issued out of the above named Honorable Court and to me directed, I have seized and will offer for sale to the last and highest bidder for cash, with the benefit of appraisement at the principal front door of the Court House in the town of Arcadia, Bienville Parish, Louisiana with in legal sale hours of Saturday, April 12, 1919 the following described property, to-wit: NE $\frac{1}{4}$ of NE $\frac{1}{4}$ Sec. 25, Tp. 18, R. 6.

Seized as the property of the defendant John Alsworth and will be sold to satisfy said writ of execution and all cost.

This the 6th day of February, 1919. **J.E. Currie**, Sheriff.



Estate Sales in Titus & Grayson Counties, TX

[Note: Articles taken from: The Standard Clarksville Newspaper, Saturday, April 23, 1853, Vol. 10, No. 3, page 2. Microfilm NO. 125, Standard Clarksville, Red River County, TX, Apr. 2, 1853 – Dec. 8, 1858. Microforms and Media Services in Noel Memorial Library at LSUS.]

Estate of James P. Morrison

Whereas the undersigned were appointed at the February term 1853, of the County Court of Grayson County, sitting in Probate, Administrators of the estate of James P **Morrison** deceased, late of said county, notice is here hereby given to all persons indebted to said estate to make immediate payment, and to all those having claims upon it, to present them to either of the undersigned duly authenticated, within the time prescribed by law, or they will be barred.

Grayson County, TX
March 1853

Wm. H. Bourland, A.B. Manion, Administrators: No 21-6ts

Estate of Timothy M. King

Whereas letters of Administration were granted to the undersigned, by the County Court of Titus County, sitting in Probate, at the September term 1852, upon the estate of **Timothy M. King** deceased, late of said County, notice is hereby given to all persons indebted to said estate to make immediate settlement, and to all persons having claims upon it, to present them to the undersigned, duly authenticated, within the time prescribed by law, or they will be barred.

Titus Co, TX
March 17th, 1853

Administratrix, **Martha H. King**, No 21-6ts.

Estate of William Avery deceased.

Notice is hereby given that the undersigned was duly appointed, by the Honorable County Court for the County of Titus, at the January term 1852. Administrator of the Estate of **William Avery** deceased, late of said County. All persons indebted to said Estate are requested to make immediate payment, and all those having claims upon it, will present them to the undersigned within the time prescribed by law, or they will be barred.

Mt Pleasant, [Titus Co.], TX
March 19th. AD 1853

Elam Riddle, Administrator, No 21,6ts

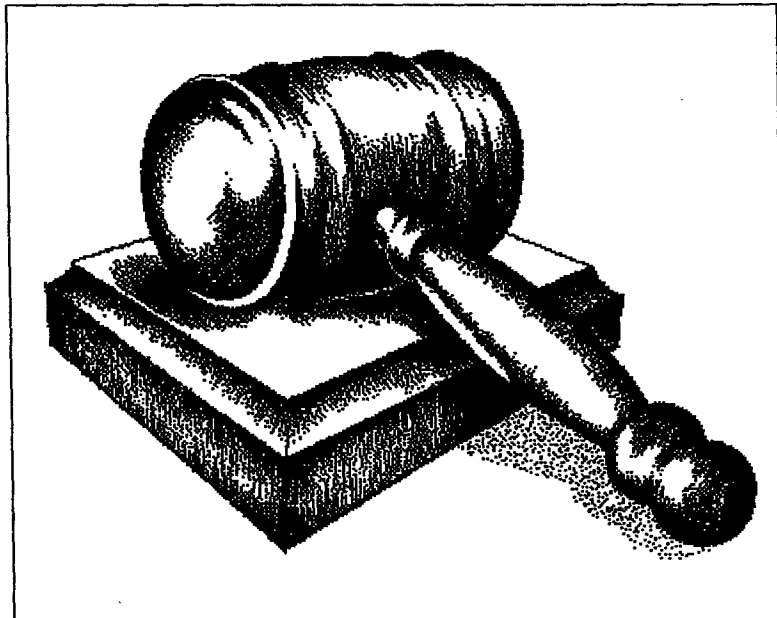
Estate of Thomas R. Wilson.

Notice is hereby given that the undersigned was duly appointed, at the January term 1853 of the County Court of Titus County, Administratrix upon the estate of **Thomas R. Wilson** deceased, late of said County. All persons indebted to said estate, are requested to make immediate payment, and all those having claims against the estate will present them to me duly authenticated, within the time prescribed by law, or they will be barred.

Titus County, TX

March 10th 1853

Mary J. Wilson, Administratrix, (No 19-6ts)



ARK-LA-TEX GENEALOGICAL ASSOCIATION, INC.

An Alphabetical Membership list for 2013, with Names Researching.

This list is for members to make contact with each other where there is a common surname being researched.

Any other use is prohibited.

THE GENIE Second Quarter 2013 89

	Surname	Given Name	Address	City	St	Zip Code	Names Researched
1	Adderley	Philip Burnett	9828 Deepwoods Drive	Shreveport	LA	71118-5037	Adderley, Hollis, Boorman & Burrett
2	Alcorn	Elizabeth "Libby"	5562 Bordley Drive	Houston	TX	77056-2328	Burfore, Jackson, Dady & Nicholson
3	Alcorn	George Avery	5562 Bordley Drive	Houston	TX	77056-2328	Hall & Cowley
4	Anderson	Jack	P. O. Box 596	Webbers Falls	OK	74470-0596	Wallace, Allen, Holloway & Farrington
5	Anderson, Jr.	John D.	4402 Oldfield Drive	Arlington	TX	76016-6227	Youngblood, Wallace, Allen & Shackelford
6	Atkins	Brenda J.	11211 Greenbrier Lane	Kansas City	MO	64137-2421	Womble, Douglas, Mosley & Watson
7	Bardsley (LM)	Dr. Daneta Daniel	1471 E. Penrose Drive	Salt Lake City	UT	84103-4466	Sullivan, Litton, Daniel & Worthington
8	Barr	April D.	2830 Wisteria Street	Shreveport	LA	71108-5034	Barr, Davis, Hudson & Burt
9	Barritt	Sheila K. Webb	426 Homalot Drive	Shreveport	LA	71106-7547	Webb, Page, Gillaspie & Tillery
10	Bell	Martha K.	114 Albert Avenue	Shreveport	LA	71105-3004	Bell, Calhoun, Robb & Seaman
11	Benjamin	Karen	1775 Fort Union Drive	Santa Fe	NM	87505-7529	Benjamin, Raphael, Welch & Kenngolt
12	Berel	Patricia	420 Stratmore Drive	Shreveport	LA	71115-3108	Berel, Lewing, Oxley & Lewis
13	Bernard	Glenda	2922 Chardonnay Circle	Shreveport	LA	71106-8418	Efferson, Hutchinson, Brister & Smiley
14	Blunt	Mary Ann Cargill	2705 NW 60th Street	Oklahoma City	OK	73112-7072	Blunt, Allen, Chance & Simmons
15	Bohannon	Shawn M.	4215 Evelyn Street	Bossier City	LA	71112-4315	Matter, Hahn & Bohannon
16	Bowers	Kathryn Everett	5117 Sealands Lane	Fort Worth	TX	76116-8415	Everett, Vandever, Dubose & Tate
17	Bradley	Roberta	9912 Pilot Point Street	Ft Worth	TX	76108-4025	Copeland, Rushin, Rushing & Watts
18	Brown	Dorothy Crouch	4525 Naff Street	Bastrop	LA	71220-5301	Crouch, Newsom, Flanerty & Wade
19	Chance	Bonnie Hand	423 Private Road 1227	Waskom	LA	75692-6039	Hand, Ellen, Modisett & Crawford
20	Chesson	Denise Illian	615 Oneonta Street	Shreveport	LA	71106-1621	Illian, Tod, Chesson & Kennison
21	Christian	Marilyn Bradley	924 Lincoln Drive	Shreveport	LA	71107-3118	Crump, Bradley, Polk & Garrison
22	Collins	Jimmie L.	5424 Coach Road	Bossier City	LA	71111-5502	Collins, Milby & Leach
23	Davis	Elysia Wright	1425 Naranjo Drive	Georgetown	TX	78628-4006	Rodden & Ballard
24	Davis	Judy	1513 Collins Road	Nashville	AR	71852-2202	Davis, Burkhart, Powell & Daniels
25	Davis	Nick	1513 Collins Road	Nashville	AR	71852-2202	Thedbalt, Faulster, Schulz & Charles

ARK-LA-TEX GENEALOGICAL ASSOCIATION, INC.

An Alphabetical Membership list for 2013, with Names Researching.

This list is for members to make contact with each other where there is a common surname being researched.

THE GENIE
Second Quarter 2013
90

26	Davis	Wanda Bowlin	32 East Sunset Drive	Kerrville	TX	78028-4817	Goff, Carter, Bowlin & Hutchins
27	Dietrich	Nelwyn Jane Clements	13904 Oakley Lane	St Francisville	LA	70775-9516	Clements, Endsley, Chamblee & Perkins
28	Farrington (LM)	William	119 Donelon Drive	Hanrahan	LA	70123-4703	Kimball, McMain, McLaughlin & Farrington
29	Fillippino	Ellen Whitaker	2302 Bobbie Street	Bossier City	LA	71112-2263	Whitaker, Ingle, Morgan & Morphew
30	Finazzo	Mary Audrey	623 Ashley River Road	Shreveport	LA	71115-3832	Sheppard, Murff, White & Ball
31	Ford	Margrett	P.O. Box 1175	Shreveport	LA	71163-1175	Ford, Farrell, Peters & Webb
32	Gaines	Dr. Cheryl	903 E. 53rd Street	Chicago	IL	60615-4305	Smith, Johnson, Norris & Taylor
33	Garsee	Billie Bickham	9073 Billiu Ridge Drive	Shreveport	LA	71118-2611	Bickham, Erwin, Sanson & Blackman
34	Griffin	Patricia W.	3884 Winterpark Drive	Shreveport	LA	71119-7011	Williams, Forte, Wagner & Cobb
35	Griffin	Willie R.	3884 Winterpark Drive	Shreveport	LA	71119-7011	Hartwell, Kelley, Neal & Grissom
36	Hatcher	Buddy	560 Webb Rogers Road	Waskom	TX	75692-3854	Harris, Schelemi, Baker & Shelem
37	Hatcher	Sarah	560 Webb Rogers Road	Waskom	TX	75692-3854	Cramer, Scott & Harris
38	Heacock	Donald D.	3820 Fairfield Ave # 113	Shreveport	LA	71104-4745	Heacock, Newberry, Hilton & Ball
39	Hendrick, Jr.	Robert Smith	3366 Deborah Drive	Monroe	LA	71201-2151	Hendrick, Stephens, Youngblood & Nicholson
40	Horne	Bob	7321 Montclair Drive	Shreveport	LA	71105-5017	Horn, Pentecost, Wedgeworth & Comelander
41	Horne	Judy	7321 Montclair Drive	Shreveport	LA	71105-5017	Rhodes, Renfro, Pettigrew & Duncan
42	Howard	Jacqueline	1503 Tina Court	Bossier City	LA	71112-3639	Maylor, Deadman & Jones
43	Hunt	Doris B.	5649 South Lakeshore Drive	Shreveport	LA	71119-4016	Wyandon, Hunt, Barr & Williams
44	Jennings	Dale O.	194 Vance Road	Benton	LA	71006-9585	Ace, Brownlee, Vance & Arnold
45	Johnson	Elaine	1812 Crater Circle	Bossier City	LA	71112-4404	Arts, Adrain, Moreland & Fretter
46	Johnson	Jim A.	1812 Crater Circle	Bossier City	LA	71112-4404	Broom, Sanders, Kea & Merritt
47	Johnston	Barbara	1313 Shamrock Street	Bossier City	LA	71112-3013	Johnston, West, Johnson & Burks
48	Jones	Barbara	2521 Tilman Drive	Bossier City	LA	71111-5944	Bright, King, Bennett & Partle
49	Jones	Esther E.	2066 Lovers Lane	Shreveport	LA	71105-3814	Edwards, Coon, Lee & Ramsey
50	Jones	James G. (Jim)	2066 Lovers Lane	Shreveport	LA	71105-3814	Jones, Colvin, Mitchell & Attaway

ARK-LA-TEX GENEALOGICAL ASSOCIATION, INC.

An Alphabetical Membership list for 2013, with Names Researching.

This list is for members to make contact with each other where there is a common surname being researched.

THE GENIE
Second Quarter 2013

91

51	Kronenberg	Barbara S.	8610 Timberwood Lane	Haughton	LA	71037-9320	Dawson, Toombs, Sparks & Bailey
52	LaCour	Peggy Suzanne	P.O. Box 4645	Shreveport	LA	71134-0645	LaCour, Barron, Appleton & Cable
53	Lazarus	Brenda H.	7709 Tampa Way	Shreveport	LA	71105-5701	Schoonover, Hall, Newcomber & Johnson
54	Lazarus, Jr.	Harry A.	7709 Tampa Way	Shreveport	LA	71105-5701	Winchalous, Votlucka, Hillreth & Ellis
55	Linnebach	Judy	6736 W Acoma Drive	Peoria	AZ	85381-4404	Bamburg, Mason, Murphy & Longino
56	Lynn	Jimmy R.	8242 Waterwood	Greenwood	LA	71033-3367	Lynn, Battle, Warren & Fields
57	Lynn	Linda Webb	8242 Waterwood	Greenwood	LA	71033-3367	May, Kirkland, Webb & Morgan
58	Lyons	William Wade	506 Yolanda	Shreveport	LA	71105-4340	McCloud, Kelly, Flowers & Lyons
59	Maca	Phyllis	173 Promenade Avenue	Shreveport	LA	71115-3241	Brown, Burnett, Cameron & Oberg
60	Mathews (LM)	Reed	24 Colony Park Drive	Shreveport	LA	71115-3165	Mathis, Rogers, Kirtley & Carlton
61	Matkins	Barbara C.	222 E. Southfield Road	Shreveport	LA	71105-4326	Chapman, Matkins, Duncan & Buie
62	Miles	Deotha Braggs	3313 Westheimer Street	Shreveport	LA	71103-2060	Miles, Lewis, Steinlein & Humphry
63	Montgomery	David Roger	3316 Jefferson Place	Bossier City	LA	71111-3176	Edwards, Miles, Montgomery & Hageman
64	Neal	Carole	P.O. Box 20921	Castro Valley	CA	94546-8921	Neal, Seals, Ward & Jamison
65	Nelson	B. Delight	1813 Bayou Circle	Bossier City	LA	71112-4036	Goodwin & Van Camp
66	O'Brock	Brenda Burns	248 Lake Point Drive	Shreveport	LA	71109-1532	Morris & Burns
67	Parker	Lonnie	4750 Kent Road	Shreveport	LA	71107-2406	Parker, Shelly & Wilson
68	Penn	Ora	P.O. Box 236	Frisco	TX	75034-0004	Surnames not Listed
69	Polk	Arlene B.	8802 Mamie Lee Circle	Houston	TX	77095-3749	Tucker, Smith, Cash & Blanks
70	Pratt	Dorothy Law	3202 Nadene Street	Shreveport	LA	71107-7626	Bryant, Law, Jack & Harvey
71	Randall	Brenda Custer	1802 Rodney Street	Bossier City	LA	71112-2038	Foster, Custer, Brooks & McDaniel
72	Reed	Katie Slack	9007 Rowan Lane	Houston	TX	77036-5349	Slack, Baker & Lewis
73	Reed	Robert Edwin	9007 Rowan Lane	Houston	TX	77036-5349	Van Selrer, Barkman & Maides
74	Richmond	Brenda Caughlin	3968 El Canto Drive	Spring Valley	CA	91977-1714	Caughlin, Simmons, Woodle & Wiseman
75	Roberts	Irma Jean	3128 Anna Street	Shreveport	LA	71103-2009	Armstrong, Turner, Richmond & Player

ARK-LA-TEX GENEALOGICAL ASSOCIATION, INC.

An Alphabetical Membership list for 2013, with Names Researching.

This list is for members to make contact with each other where there is a common surname being researched.

THE GENIE
Second Quarter 2013
92

76	Sanders	Doris L.	1035 W 109th Street	Chicago	IL	60643-3733	Clark, Kendrick, Sarden & Young
77	Scholes	June L.	9404 Castlebrook Drive	Shreveport	LA	71129-4808	Landry, Scholes, McElroy & Medline
78	Scott	Linda Darnell	446 Woodrow Street	Shreveport	LA	71108-4032	Scott, Sanders, Gillyard & Gilliard
79	Sen	Paul	178 Carroll Street	Shreveport	LA	71105-4233	Moody, O'Neal, Hoyt & Dill
80	Shipp	Joseph Stephen	110 Nedra Circle	Frierson	LA	71027-2238	Love & Shipp
81	Shrontz	Marlene	82 Grace Lane	Bossier City	LA	71112-2257	Surnames not Listed
82	Smiley	Joann C.	8923 Bernay Drive	Shreveport	LA	71118-2006	Smiley, Lane, Fritch & Hearn
83	Smiley	Carmen R.	8923 Bernay Drive	Shreveport	LA	71118-2006	Surnames not Listed
84	Stoll	Chris	5007 Richland Place	Bossier City	LA	71112-5032	Stover, Mays, Fowler & Garland
85	Stover	Martha	4431 N. Fairway Drive	Shreveport	LA	71109-4907	Shoemaker, Miller, Green & Hines
86	Tatum	Richard (Dick)	P.O. Box 603	Minden	LA	71058-0603	Tatum, Barrow, Kinnebrew & Collier
87	Thomas	Rev. Pike	3800 Viking Drive	Bossier City	LA	71111-7043	Scott, Rentz, Provosty & LeDou?
88	Travis	Greta	1500 Sargent Street	Jonesboro	LA	71251-2243	Battle, Norton, Pace & Harper
89	Trull	Ester	2276 Strong Hwy	El Dorado	AK	71730-8459	Trull, Vines, Pipes & Barner
90	Ward	Walter Howard	103 Crestwood Drive	Tullahoma	TN	37388-5602	Murphy, Gray, Ward & Nicklas
91	Webb	Sonja	8241 Bea Lane	Greenwood	LA	71033-3305	Dowling, Wald, Wood & Robbins
92	Weddle	Jack Talley	803 Herrington Drive	Springhill	LA	71075-2115	Weddell, Weddle, Stief & Steves
93	Weddle	Mary	803 Herrington Drive	Springhill	LA	71075-2115	Rainwater, Richardsons, Sharp & Talley
94	Williams	Jan	12103 Greenwood Springridge	Keithville	LA	71047-8868	Williams, McConnell, Savel & Towery
95	Williams	Tom	6400 Middle Ridge Lane	Hixson	TN	37343-3526	Russel, Tennille, Williams & Atkins
96	Wilson	Bernard	9000 North Lattimore Lane	Tucson	AZ	85742-8859	Wilson, Tanner & Given
97	Wise	Edwina Burrows	190 Ardmore Street	Shreveport	LA	71105-2108	Mericle, Richardson, Burrows & McFakland
98	Woods (LM)	Isabelle M.	2016 Surrey Lane	Bossier City	LA	71111-5535	Talitt, Huggins, Muniz & Quinones
99	Wright	Olden M.	510 East Dalzell Street	Shreveport	LA	71104-2778	Wright, Walker, Radin & Brackens

LM (Life Member)

ARK-LA-TEX GENEALOGICAL ASSOCIATION
INSTITUTIONAL MEMBERSHIPS - 2013

THE GENIE Second Quarter 2013

93

	Name	Address	City	State	Zip Code
1	Allen County Public Library	P. O. Box 2270	Fort Wayne	IN	46801-2270
2	Bossier Parish Library History Center	2206 Beckett Street	Bossier City	LA	71111-3732
3	Carroll County Genealogical Society	P.O. Box 576	Carrollton	GA	30112-0576
4	Cass County Genealogical Society	P.O. Box 880	Atlanta	TX	75551-0880
5	Central Louisiana Genealogical Society	P.O. Box 12206	Alexandria	LA	71315-2206
6	Central Texas Genealogical Society West Waco Library	5301 Bosque Blvd #275	Waco	TX	76710-4444
7	Cherokee City Genealogical Society	P.O. Box 1332	Jacksonville	TX	75766-1332
8	Cincinatti Public Library	800 Vine Street	Cincinatti	OH	45202-2009
9	Claiborne Parish Library	909 Edgewood Drive	Homer	LA	71040-3009
10	Clark County Historical Society	P.O. Box 516	Arkadelphia	AR	71923-0516
11	Clayton Library [Clayton Library Friends]	5300 Caroline Street	Houston	TX	77004-6896
12	Colorado Genealogical Society	P.O. Box 9218	Denver	CO	80209-0218
13	Cowetta County Genealogical Society	P.O. Box 1014	Newnan	GA	30264-1014
14	Dallas Public Library	1515 Young Street	Dallas	TX	75201-5499
15	Dupre Library, University of LA at Lafayette	400 East Street Mary Blvd.	Lafayette	LA	70503-2040
16	East Bank Regional Library	4747 W Napoleon Avenue	Metairie	LA	70001-2310

ARK-LA-TEX GENEALOGICAL ASSOCIATION
INSTITUTIONAL MEMBERSHIPS - 2013

17	The DAR Library Memorial Continental Hall	1776 D Street NW	Washington D.C.		20006-5303
18	East Tennessee Historical Society	P.O. Box 1629	Knoxville	TN	37901-1629
19	East Texas Genealogical Society	P.O. Box 6967	Tyler	TX	75711-6967
20	Ellis County Genealogical Society	P.O. Box 479	Waxahachie	TX	75168-0479
21	Evangeline Genealogical & Historical Society	P.O. Box 664	Ville Platte	LA	70586-0664
22	Family Search Library Rights	50 E. N. Temple St., Rm 545	Salt Lake City	UT	84150-0005
23	Fresno Genealogical Society	P.O. Box 1429	Fresno	CA	93716-1429
24	Fort Worth Genealogical Society	P.O. Box 471789	Fort Worth	TX	76147-1408
25	Genealogical Society of Caldwell County	215 South Pecan Avenue	Luling	TX	78348-2607
26	Genealogical Forum of Oregon	P.O. Box 42567	Portland	OR	97242-0567
27	Genealogical Friends of the Library	P.O. 314	Neosho	MO	64850-0314
28	Greene City Historical & Genealogical Soc.	P.O. Box 121	Paraguld	AR	72451-0121
29	Hopkins County Genealogical Society	P.O. Box 624	Sulphur Springs	TX	75483-0624
30	Jackson County Genealogical Society	P.O. Box 984	Pascagoula	MS	39567-0984
31	Johnson County Genealogical Society	P.O. Box 12666	Shawnee Mission	KS	66282-2666
32	Kansas Genealogical Society	P.O. Box 103	Dodge City	KS	67801-0103

ARK-LA-TEX GENEALOGICAL ASSOCIATION
INSTITUTIONAL MEMBERSHIPS - 2013

THE GENIE Second Quarter 2013 95

33	Lecomite Des Archieves De La Louisiana	P.O. Box 1547	Baton Rouge	LA	70821-1547
34	Library of Congress	10 First Street	Washington DC		20540-0000
35	Limestone City Historical Society	P.O. Box 82	Athens	AL	35612-0082
36	Lincoln Parish Library	910 N Trenton Street	Ruston	LA	71270-3328
37	University of New Orleans Long Library	2000 Lakeshore Drive	New Orleans	LA	70148-0001
38	Louisiana Genealogical & Historical Society	P.O. Box 82060	Baton Rouge	LA	70884-2060
39	LSUS Library & Archives	8515 Youree Drive	Shreveport	LA	71115-2399
40	Melting Pot Genealogical Society	P.O. Box 936	Hot Springs	AR	71902-0936
41	MesQuite Historical & Genealogical Society	P.O. Box 850165	MesQuite	TX	75185-0165
42	Mid Continent Public Library	3440 S Lees Summit Road	Independence	MO	64055-1923
43	Midwest Historical & Genealogical Society	P.O. Box 1121	Wichita	KA	67201-1121
44	Midwest Tennessee Genealogical Society	P.O. Box 3343 Murray Stat	Jackson	TN	38303-3343
45	Natchez Trace Genealogical Society	P.O. Box 420	Florence	AL	35631-0420
46	Natchitoches Parish Library	450 2nd Street	Natchitoches	LA	71457-4649
47	New Orleans Public Library-Serials Division	219 Loyola Avenue	New Orleans	LA	70112-2044
48	The New York Public Library [US Local Hist Gen]	11 W 40th St. Rm 119	New York	NY	10018-2668

ARK-LA-TEX GENEALOGICAL ASSOCIATION
INSTITUTIONAL MEMBERSHIPS - 2013

THE GENIE Second Quarter 2013

96

49	Oregon Genealogical Society	955 Oak Alley	Eugene	OR	97401-3148
50	Palm Beach City Genealogical Society	P.O. Box 17617	W Palm Beach	FL	33416-7617
51	San Angelo Genealogical Society	P.O. Box 3453	San Angelo	TX	76902-3453
52	San Antonio Central Library	600 Soledad	San Antonio	TX	78205-1208
53	San Antonio Genealogical Historical Society	P.O. Box 790087	San Antonio	TX	78279-0087
54	San Diego Genealogical Society	7343 Ronson Rd. Ste. 0	San Diego	CA	92111-1430
55	Santa Clara County Historical and Genealogical Society	2635 Home Stead Road	Santa Clara	CA	95051-5387
56	Seattle Genealogical Society	P.O. Box 15329	Seattle	WA	98115-0329
57	Shreve Memorial Library Broadmoor	1212 Captain Shreve Drive	Shreveport	LA	71105-2819
58	St. John The Baptist Parish Library	2920 Highway 51	LaPlace	LA	70068-6422
59	St. Louis Genealogical Society	P.O. Box 432010	St Louis	MO	63143-2010
60	State Historical Society of Wisconsin	816 State Street	Madison	WI	53706-1482
61	State Library of Louisiana	P.O. Box 131	Baton Rouge	LA	70821-0131
62	SW Louisiana Genealogical Society	P.O. Box 5652	Lake Charles	LA	70606-5652
63	SW Oklahoma Genealogical Society	P.O. Box 148	Lawton	OK	73502-0148
64	Tennessee Valley Genealogical Society	P.O. Box 1568	Huntsville	AL	35807-0568

ARK-LA-TEX GENEALOGICAL ASSOCIATION
INSTITUTIONAL MEMBERSHIPS - 2013

THE GENIE Second Quarter 2013 97

65	Terrebonne Genealogical Society	P.O. Box 20295	Houma	LA	70360-0295
66	Texarkana USA Genealogical Society	P.O. Box 5825	Texarkana	TX	75505-5825
67	The Genealogical Society of Old Tryon County	P.O. Box 938	Forest City	NC	28043-0938
68	The Hossier Genealogist	450 W Ohio Street	Indianapolis	IN	46202-3269
69	The NE Mississippi Historical & Genealogical Society	P.O. Box 434	Tupelo	MS	38802-0434
70	The Tennessee Genealogical Magazine	P.O. Box 381824	Germantown	TN	38183-1824
71	The Wichita Genealogical Society	P.O. Box 3705	Wichita	KS	67201-3705
72	Topeka Genealogical Society	P.O. Box 4048	Topeka	KS	66604-0048
73	Union County Genealogical Society Barton Library	200 E 5th Street	El Dorado	AR	71730-3897
74	Vernon Historical & Genealogical Society	P.O. Box 275	Leesville	LA	71496-0275
75	Weatherford Public Library	1014 Charles Street	Weatherford	TX	76086-5007
76	Willamette Valley Genealogical Society	P.O. Box 2083	Salem	OR	97308-2083
77	The Historic New Orleans Collection Williams Research Center	410 Chartres Street	New Orleans	LA	70130-2120
78	Winn Parish Genealogical & Historical Soc.	P.O. Box 652	Winnfield	LA	71483-1357
79	Yell County Historical Association	P.O. Box 622	Dardenelle	AR	72834-0622

How to Organize Your Genealogy Files

*By Tammy E. on May 29, 2008
From genealogysf.blogspot.com*

As a hobbyist or professional genealogist, organization is the number one problem for all. Stacks of papers seem to grow over night. Before you know it your entire room is filled to the brim. Believe it or not, the solution is as simple as finding an organizational system that suits your needs and research habits, and then making it work. It is not exactly as simple as it sounds, but it is doable and will ultimately help to keep you from spinning your wheels and duplicating research.

Which filing system is best? Ask a group of genealogists how they organize their files and you are likely to get a different answer from every one of them. There are a number of popular organization systems; including files, binders, notebooks, etc., but there is truly no individual system which is “best” or “correct: for everyone. We all think and behave differently, so the most important consideration in setting up your filing system is that it must fit your personal style. The best organization system is always that one that you will use.

As your genealogy research progresses you will find that you have numerous paper documents to file for each individual that you research – birth records, census records, newspaper articles, wills, correspondence with fellow researchers, website printouts, and the list goes on and on. The trick is to develop a filing system that will enable you to easily lay your fingers on any of these documents when you want them and at any time.

Commonly used genealogical filing systems include: **1.** By surname – all papers for an individual surname are filed together. **2.** By couple or family – all papers related to a husband and wife or family unit is filed together. **3.** By family line – all papers related to a specific family line are filed together. Many genealogists begin by starting with four such ancestral lines – one for each of their grandparents. **4.** By event – all papers related to a specific event type (birth, marriage, census, etc.) are filed together.

You can begin with any of the four systems mentioned above; you can use these methods to further organize your papers into the following categories: **1.** By location – papers are first grouped by one of the four genealogy filling systems listed above, then further broken down by country, state, county, or town to reflect your ancestor’s migration. **2.** By record type – papers are first grouped by one or the four genealogy filing systems, and then further broken down by record type (birth records, census records, will, etc.).

The **first step** for a successful organizational system is to decide on the basic physical form for your filing – file folders, notebooks, binders, or computer disks.

The advantages and disadvantages in a genealogical filing system.

1. Filing cabinet and file folders – file folders and probably the most popular tools for genealogists. They are inexpensive, very portable, and will easily hold papers of different shapes and sizes. When dropped, however, they can become quite a mess, with papers thrown out of order, and possible misplaced. File folders make it easy to consult documents, but you have to be diligent about putting them back where they came from. Once you have generated a lot of paper, however, the file folder system is the most flexible and expandable.
2. Binders – If you really like to keep things organized in one place, then organizing your data into binders may be best for you. This method of organizing your records into a standardized format of regular sized papers is your best bet. Documents that you wish to not put three-hole punch in can be inserted in polypropylene sleeves. Binders are portable; however, if you do a lot of genealogical research you may find that binders eventually become too cumbersome on their own.
3. Computer disks, CDs and DVDs – transcribing or scanning genealogical documents into the computer can save quite a bit of space, and computerized organizational systems can greatly speed up tedious tasks such as sorting and cross-referencing. CD-ROMs supposedly last indefinitely if stored under the proper storage conditions. But will your descendant's one hundred or more years from now have a computer that can read them? If you choose to use your computer as your primary organizational system, consider also making and preserving copies of printouts of important documents.

After you have started to organize your genealogical clutter, you will probably find that a combination of storage methods works best. Some people find themselves using binders for documents and file folders for miscellaneous research.

To set up file folders to organization your genealogy records you will need the following basic supplies. **1.** A filing cabinet or file boxes with lids. The boxes need to be strong, preferably plastic with horizontal inner ridges or grooves for letter-size hanging files. **2.** Letter-size hanging file folders. The inexpensive standard green hanging file folders will work just fine. **3.** Manila folders. These should have slightly smaller tabs than the hanging file folders and should have reinforced tops to last through heavy use. **4.** Pens. For best results use a pen with an ultra fine point with acid free ink. **5.** Highlighters. You can buy highlighters in light blue, light green, yellow, and pink. Colored

pencils also work. **6.** Labels for file folders. These labels should have blue, green, red, and yellow strips along the top or you can use your highlighters to mark the strips on the top of the file folders.

Now that you have assembled your supplies, it is time to get started with the file folders. Use different colored file folders for the lineages of each of your four grandparents – in other words, all folders created for the ancestors of one grandparent will be marked with the same color. The colors are up to you, but the most common color choices are: **1.** Blue – Paternal grandfather (father's father) **2.** Green – Paternal grandmother (father's mother) **3.** Red – Maternal grandfather (mother's father) **4.** Yellow – Maternal grandmother (mother's mother).

This creates a separate folder for each surname. Write the names on the hanging file tabs, and then hang the files in alphabetical order in your file box or cabinet by color.

If you have just started your genealogical research, this may be all you need to do. But if you have accumulated a lot of notes, documents and photocopies, it is now time to subdivide. This is where you have to choose how you want to organize your files. This can be time consuming, but it is well worth it in the long run.

About... **Tammy E.**

Personal Info

Tammy E. (Female)

Lives in Birmingham, USA

Homepage

<http://genealogysf.blogspot.com/>

Source Website:

www.zimbio.com/Genealogy/articles/158/How+Organize+Genealogy+Files

SURNAME INDEX

[A surname may appear more than once on a page.]

A

Abbe 72
Adams 75
Adderley 51, 53, 54, 55, 56
Alden 66
Alsworth 86
Avery 87

B

Bailey 75
Baker 75
Barnett 75
Belgon 75
Bell 75
Beran 67
Bernard 54, 69
Bethea 75
Blakely 84
Bonner 75
Bradford 84
Bradley 75
Brandon 75
Brandy 75
Bridge 66
Briley 75
Brooks 75
Broughton 84
Brown 86
Bunch 72
Butler 72

C

Callaway 64
Campbell 72
Carlisle 54
Cavey 73
Christian 54
Clark 66
Coleman 84
Crook 73
Currie 85, 86

D

Davis 54
Dumas 76
Duncan 76
Dunnam 64
Dyer 64

E

Elder 64, 66
Ellis 76
Ervin 76

F

Fagyal 71
Falls 76
Field 76
Fleming 76
Flournoy 53
Foley 64
Foster 76
Frain 73

G

Galligly 64
George 76
Gibson 76
Gilbert 76
Gosby 76
Grace 85
Green 76
Gresens 67
Grimes 76

H

Hall 64, 76
Harlston 76
Harris 76
Hay 73, 76, 77
Hayes 77
Haynes 77
Hays 77, 85

Henry 72
Hernandez 77
Herron 77
Hester 68
Hinckley 56
Hoffpaur 64
Holmes 77
Hubbard 77
Hughkes 73
Hunt 54
Hunter 77

J

Jackson 77, 78
James 78
Jenkins 78
Jennings 61
Johnson 54, 55, 60, 78
Joiner 64
Jones 54, 79
Joseph 79

K

Keith 69
Kerbs 69
King 79, 87
Kyle 67

L

LaCour 54
Ledent 79
Lenoir 79
Lenore 80, 84
Leopold 80, 84
Little 80
Loe 85
Looney 63, 64
Lucas 73
Luebking 59

SURNAME INDEX

[A surname may appear more than once on a page.]

Lynch 80
Lynn 54, 67

M

Mangum 73
Manion 87
Martin 64, 80
Mathews 53, 54, 55
Mays 80
McClendon 80
McClinton 80
McCormick 80
McMillan 53
McNeill 73
McRee 74
McRiddy 80
Menweathers 80
Middleton 54
Minnieweather 80
Montgomery 80
Moore 81
Morris 81
Morrison 87
Moses 64
Moss 81
Myles 64

N

Nattin 64
Nattin 64
Neblett 64
Nettle 64
Nickerson 81
Noble 81

O

Odom 81
Owens 52, 61

P

Pane 84
Payne 81, 84
Peden 74
Peltzer 69
Pittman 81

R

Randall 54
Reynolds 71
Rhode 81
Riddle 87
Rivers 63, 64, 66
Robinson 81
Royston 74
Rucker 81
Ryans 64

S

Savall 81
Scarbouough 64
Schlegel 69
Scott 81, 82
Seabaugh 64
Sellers 55, 60, 64
Simmons 82
Sinor 53
Slattery 53, 54
Smelley 85
Smith 62, 82
Spearman 82, 84
Squyres 69
Stanford 64
Stewart 82
Stokes 82
Strayhan 64
Sutton 68
Swindle 64
Szucs 59

T

Tammy E 98, 100
Taylor 82
Tennant 82
Thompson 82
Tippett 82
Toothman 74
Turk 54

V

Vinegar 82

W

Wafford 82
Walker 82
Walpole 53
Ward 82
Washington 82
Watson 70, 82
Weathersby 55
Weaver 63, 64
Webb 54, 68, 72, 83
Whatley 74
Wheeler 74
Wheless 61
White 83
Whited 61
Williams 83, 84
Wills 83
Wilson 83, 84, 88
Woods 54, 75, 76, 77, 78, 84
Worley 84
Wright 59, 84

Z

Zeigler 66